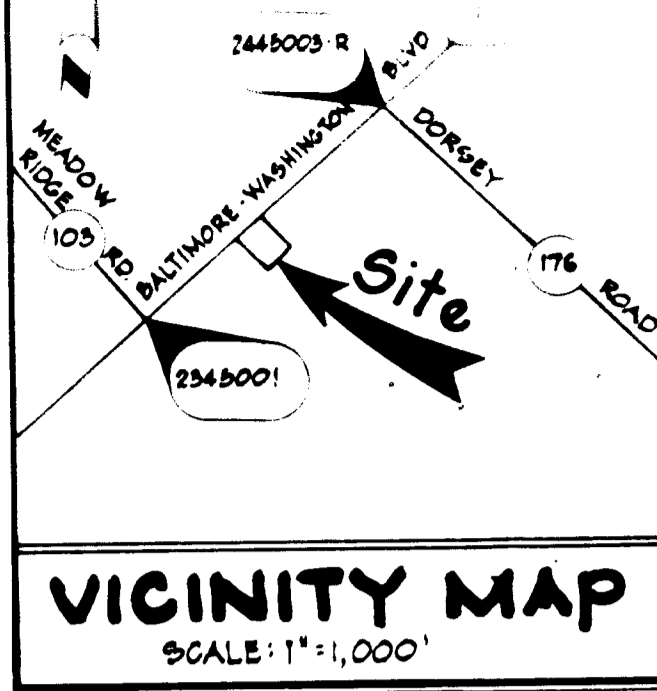


**BALTIMORE - WASHINGTON BOULEVARD**  
 EXISTING 60' R/W  
 PROPOSED 100' R/W  
 U.S. ROUTE #1



- PROPOSED SITE CHANGES
- 3 PUMP ISLANDS W/CANOPY
  - KIOSK
  - CUSTOMER SERVICE BUILDING WITH RESTROOM (S-2)
  - STORM DRAINAGE SYSTEM
  - DRIVEWAY AREA
  - 4,000 GAL. TANK ADDITION TO PRESENT GASO. STORAGE TANK FIELD
  - LIGHTING
  - LANDSCAPING
  - GRADING

APPROVED: For Public Water, Public Sewerage and Storm Drainage Systems and Roads  
 HOWARD COUNTY DEPARTMENT OF PUBLIC WORKS  
 DIRECTOR: [Signature] DATE: 7-20-82

APPROVED: For Public Water and Public Sewerage Systems  
 HOWARD COUNTY HEALTH DEPARTMENT  
 CHIEF: [Signature] DATE: 7-27-82

APPROVED: Howard County Office of Planning  
 PLANNING DIRECTOR: [Signature] DATE: 7-27-82  
 CHIEF, DIVISION OF LAND DEVELOPMENT AND ZONING ADMINISTRATION

PARKING REQUIREMENTS TO BE IN ACCORDANCE WITH SECTION 123 B 2 OF HOWARD CO. 1977 ZONING REGULATION

SITE IS SUBJECT TO SECTIONS 116 & 122 (F)(16) OF THE HOWARD COUNTY ZONING REGULATIONS

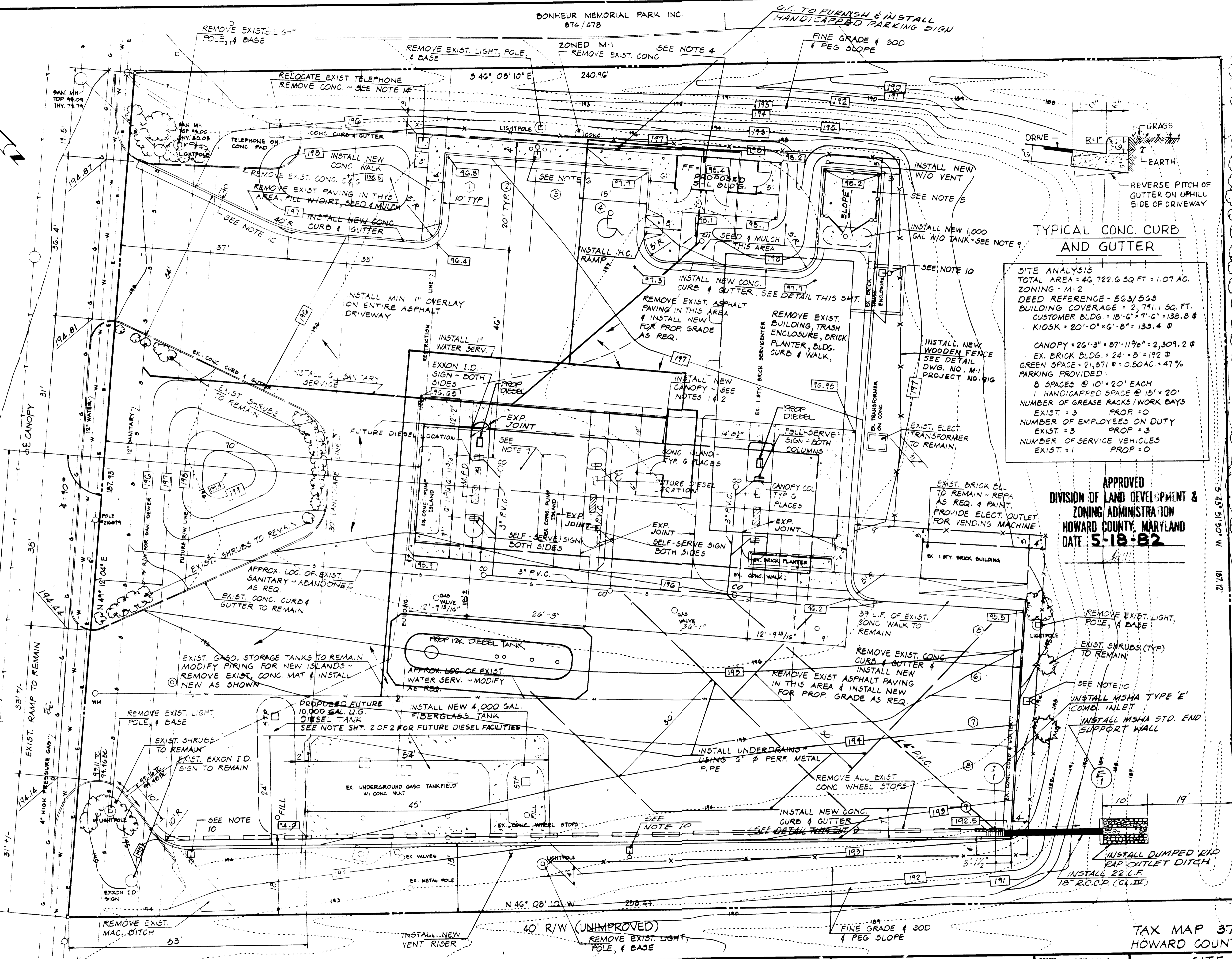
CONTRACTOR SHALL VERIFY THE LOCATION OF EXISTING WATER AND SANITARY SERVICE LINES AND GASOLINE PRODUCT LINES

SEE DRAWING 1-B (MOD) SHEET 2 OF 6 FOR GENERAL NOTES

FOR SEDIMENT CONTROL PLAN SEE DWG. NO. SC-1-SC-2 SHEET 2 & 4 OF 6

FOR LANDSCAPE PLAN SEE DWG. NO. LS-1-SHEET 6 OF 6

FOR STORM DRAIN PROFILES AND COMPUTATIONS SEE DWG. NO. SD-1-SHEET 5 OF 6



**TYPICAL CONC. CURB AND GUTTER**

SITE ANALYSIS  
 TOTAL AREA = 46,722.6 SQ. FT. = 1.07 AC.  
 ZONING - M-2  
 DEED REFERENCE - 563/563  
 BUILDING COVERAGE = 2,711.1 SQ. FT.  
 CUSTOMER BLDG. = 18'-0" x 7'-6" = 138.8 #  
 KIOSK = 20'-0" x 6'-8" = 133.4 #

CANOPY = 26'-3" x 87'-11 1/2" = 2,309.2 #  
 EX. BRICK BLDG. = 24'-0" x 8'-0" = 192 #  
 GREEN SPACE = 21,871 # = 0.50 AC. = 47 %  
 PARKING PROVIDED:  
 8 SPACES @ 10' x 20' EACH  
 1 HANDICAPPED SPACE @ 15' x 20'  
 NUMBER OF GREASE RACKS / WORK BAYS  
 EXIST. = 3 PROP. = 0  
 NUMBER OF EMPLOYEES ON DUTY  
 EXIST. = 3 PROP. = 0  
 NUMBER OF SERVICE VEHICLES  
 EXIST. = 1 PROP. = 0

APPROVED  
 DIVISION OF LAND DEVELOPMENT &  
 ZONING ADMINISTRATION  
 HOWARD COUNTY, MARYLAND  
 DATE 5-19-82

TAX MAP 37 PARCEL 270  
 HOWARD COUNTY FILE NO. SDP-82-59

THIS BLUEPRINT IS LOANED TO YOU AND MUST BE RETURNED WHEN IT HAS SERVED THE PURPOSE FOR WHICH INTENDED

REVISIONS:  
 1. ADDED FENCE & FUTURE DIESEL TANK L.M.C. 3-27-82  
 2. RE-GRADED, ALTERED DRAINAGE SYSTEM  
 3. CANOPY SIGNAGE & UNDERGROUND GAS  
 4. HANDICAPPED PARKING SIGN L.M.C. 4-1-82  
 5. L.M.C. 5-3-82 L.M.C. 5-27-82 L.M.C. 6-1-82  
 6. 20' ELEVATION DETAIL 5-27-82 L.M.C. 5-27-82  
 7. RELOCATED KIOSK AND CENTER ISLAND 5-27-82 JBM

EXXON COMPANY, U.S.A.  
 (A DIVISION OF EXXON CORPORATION)  
 POST OFFICE BOX 1288  
 BALTIMORE, MARYLAND 21203

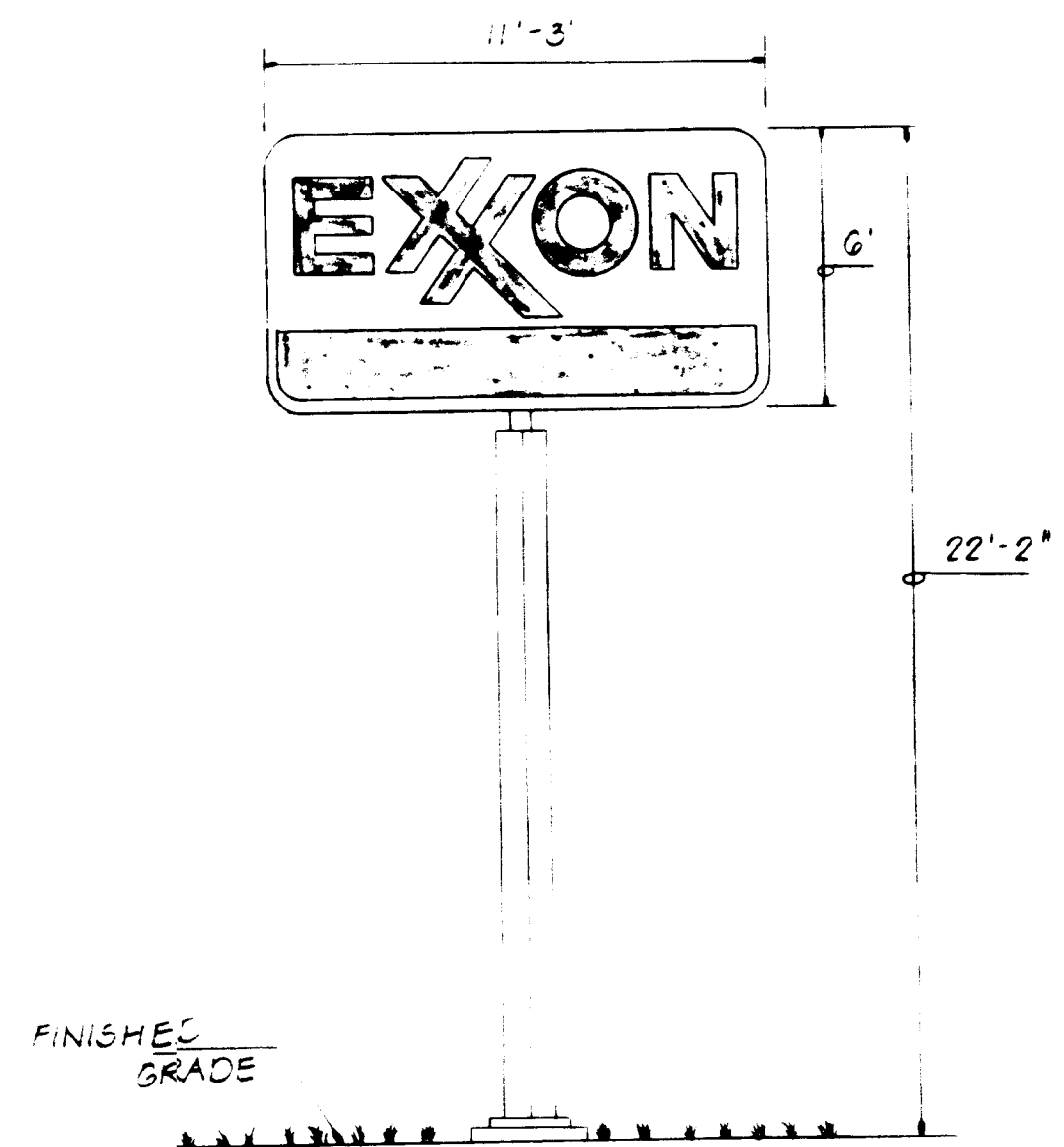
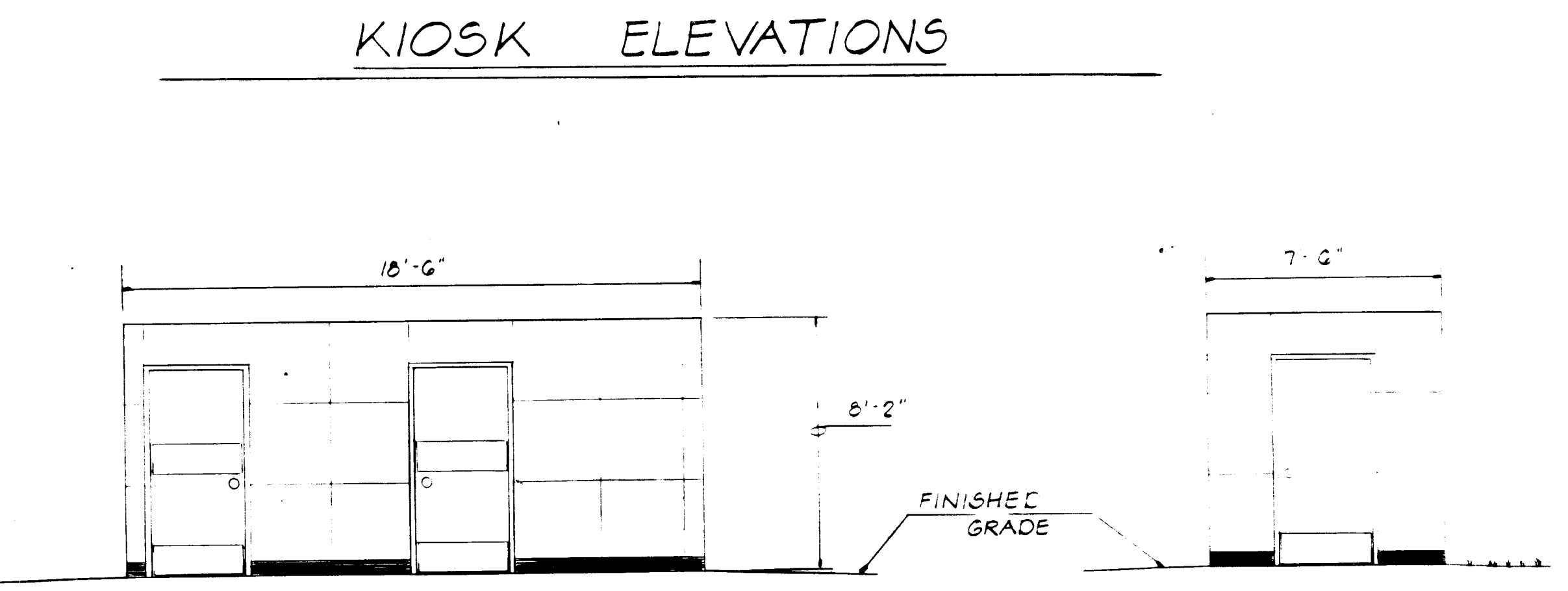
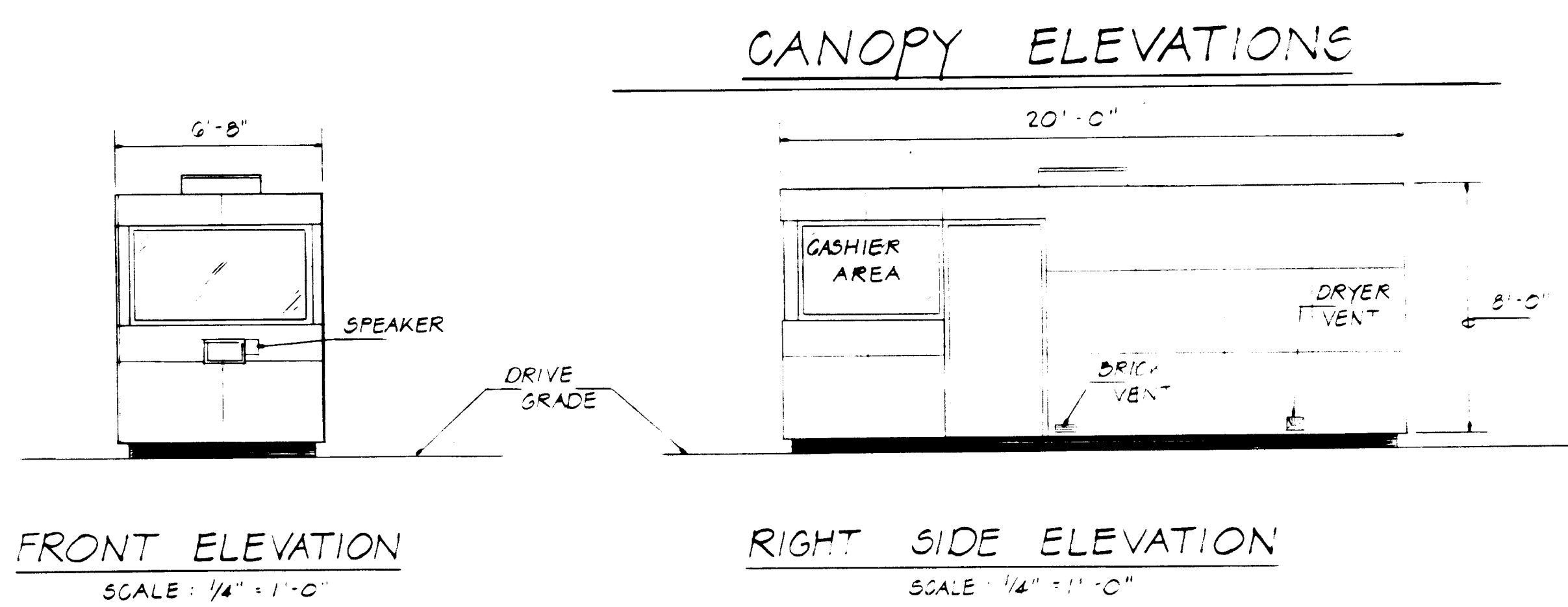
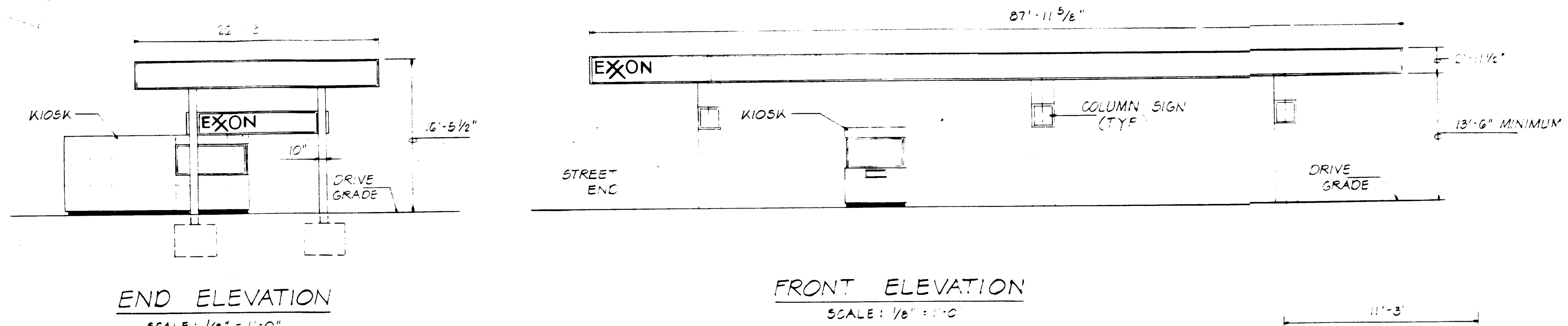
BUILDING ADDITIONS TO SDP 71-56 (ZONED M-2)

DATE 6/11/82

DRAWN BY: G. STEVENS  
 CHECKED BY: [Signature] 4/22/82  
 APPROVED BY: [Signature] 4/22/82  
 SCALE: 1" = 10'

SITE AND GRADING PLAN  
 7253 WASHINGTON BLVD  
 ELKRIDGE, MARYLAND  
 FIRST ELECT. DISTRICT SDP-82-59

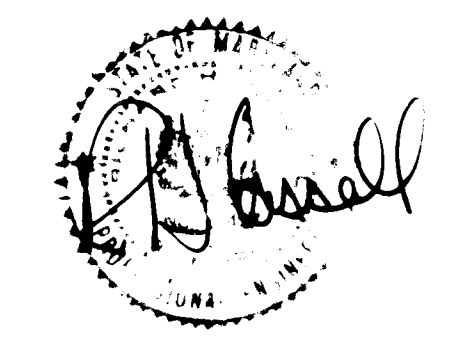
DATE 2-7-82  
 FILE NO. 7045  
 SHEET NO. 1 OF 6  
 DWG. NO. 1-B (MOD)



- GENERAL NOTES**
- PROPOSED 27M x 8M BASS-YAGER CANOPY AS SHOWN. SEE DRAWING NO. PROJECT BOI FOR DETAILS. INSTALL P.V.G. CANOPY UNDERGROUND DRAINS AS SHOWN.
  - GENERAL CONTRACTOR IS TO FURNISH THE ANCHOR BOLTS AND INSTALL THE CONCRETE FOOTINGS AS SHOWN ON THE DETAILS. TOP OF ALL FOOTINGS TO TERMINATE AT THE SAME ELEV. VERIFY BY EXXON'S FIELD ENGINEER. CANOPY FABRICATOR IS TO FURNISH ALL OF THE COLUMNS THE SAME LENGTH SO THAT A 13'-6\"/>
  - PROPOSED PRE-FAB INTEGRATED SECURITY TYPE K-12 KIOSK. INSTALL NEW TRANSAC 12-A FOR M.P.D.'S, EXECUTIVE INTERCOM SYSTEM WITH SPEAKER AT EACH ISLAND. INSTALL NEW CONDUIT AND WIRING FROM KIOSK TO NEW ISLANDS. INSTALL 4 BOLLARDS, ONE EACH CORNER, AS SHOWN AND PAINT. SEE DWG. M-1, PROJECT DIG FOR DETAILS. TIE IN NEW WATER AND SANITARY LINES.
  - PROPOSED 5-2 CUSTOMER SERVICE BUILDING, HANDICAPPED DESIGNED (FURNISHED AND INSTALLED BY OTHERS). TIE IN WATER AND SANITARY LINES. G.C. TO FURNISH PLUMBING FIXTURES. SEE DWG. NO. 52-1, 52-2, & 51/2-3, PROJECT BOB FOR DETAILS.
  - FURNISH AND INSTALL 10' x 12' x 6\"/>
  - AIR & WATER SERVICE: (SEE DWG. M-1, PROJECT DIG) AIR HOSE & HANGER / FROST FREE WATER POST HUB - FURNISHED & INSTALLED BY G.C.  
THE FOLLOWING ITEMS ARE FURNISHED BY EXXON, INSTALLED BY G.C.
    - LIGHT - 240V LAMP TO BE 250W METAL HALIDE LAMP & BALLAST (4\"/>
    - AIR/WATER SIGN - MOUNTED ON LIGHT POLE
    - OIL CAN OPENER - MOUNTED ON LIGHT POLE
    - 16 GALLON TRASH DRUM
    - TOWEL DISPENSER
  - EXISTING PUMPS, ISLAND LIGHTS, CABINETS & ETC. TO BE REMOVED AND DELIVERED TO NEAREST EXXON WAREHOUSE. REMOVE EXISTING CONCRETE PUMP ISLAND & CONCRETE MAT FILL VOIDS AS NECESSARY.
  - INSTALL NEW CONCRETE MAT & PUMP ISLANDS AS SHOWN. INSTALL NEW MULTI-PRODUCT DISPENSERS AS SHOWN.
  - INSTALL NEW FIBERGLASS TANKS AS FOLLOWS WITH FIBERGLASS PIPING
    - 1) 4,000 GAL. S.T. 34K PUMP
    - 2) 1,000 GAL. WASTE OIL VAPOR RECOVERY SYSTEM - PHASE ONE
  - INSTALL NEW LIGHTS - 240V LAMP TO BE 400W SUPER HALIDE UNIT (2' x 2' FIXTURE TYPE) WITH 5\"/>
  - LANDSCAPING TO BE DONE BY OTHERS. SEE LANDSCAPE PLAN FOR DETAILS.
  - ALL CURBING SHOWN TO BE CONCRETE CURB & GUTTER WITH EXPANSION JOINTS EVERY 20'. SEE DWG. M-1, PROJECT DIG.
  - SEALCOAT ENTIRE ASPHALT DRIVEWAY 90 DAYS AFTER INSTALLATION OF NEW ASPHALT PAVING (BY OTHERS)
  - GENERAL CONTRACTOR TO INSTALL 2\"/>

APPROVED: For Public Water, Public Sewerage and Storm Drainage Systems and Roads HOWARD COUNTY DEPARTMENT OF PUBLIC WORKS	
<i>Henry F. Nemy</i> DIRECTOR	7-20-82 DATE
<i>William J. Reilly</i> CHIEF, BUREAU OF ENGINEERING	7-20-82 DATE
APPROVED: For Public Water and Public Sewerage Systems HOWARD COUNTY HEALTH DEPARTMENT	
<i>John J. Payne</i> COUNTY HEALTH OFFICER	7-21-82 DATE
APPROVED: Howard County Office of Planning and Zoning	
<i>Donald J. Armig</i> PLANNING DIRECTOR	7-27-82 DATE
<i>William J. Reilly</i> CHIEF, DIVISION OF LAND DEVELOPMENT AND ZONING ADMINISTRATION	7-27-82 DATE

APPROVED  
DIVISION OF LAND DEVELOPMENT &  
ZONING ADMINISTRATION  
HOWARD COUNTY, MARYLAND  
DATE 5-18-82



- FUTURE DIESEL FACILITIES**
- INSTALL PRODUCT LINES FROM FUTURE DIESEL DISPENSER POSITION TO FUTURE DIESEL TANK POSITION (CAP BOTH ENDS). PLACE A RAILROAD SPIKE OR SIMILAR MARKER IN ASPHALT WHERE LINE TERMINATES. REFERENCE THIS POINT FROM THREE PERMANENT OBJECTS. SCORE CONCRETE IN AREA OF FUTURE DIESEL DISPENSER.
  - INSTALL BLANK CONDUIT FROM CASHIER AREA TO ALL FUTURE DIESEL DISPENSER POSITIONS AND FUTURE S.T.P. POSITIONS (CAP BOTH ENDS).

HOWARD COUNTY FILE NO: SDP-82-59

**CERTIFICATION BY DEVELOPER:**  
I/we hereby certify that all development and construction will be done according to this Plan, and that any responsible personnel involved in the construction project will have a Certificate of Attendance at a Department of Natural Resources Approved Training Program for the Control of Sediment and Erosion Water Management Practices.

*William J. Reilly*  
6/11/82  
Engineering Mgr.  
Exxon Company, U.S.A.

**REVISIONS:** ADDED FUTURE DIESEL FACILITIES NOTE  
M.O. 5-17-82  
NOTED EXISTING I.D. SIGN - M.O. 4-16-82  
DEVELOPER CERTIFICATION - AKR. 6/11/82  
REMOVED: B-2, B-3-B2, L.M.O.  
LOCAL FIRE ELECTION DISTRICT 5-27-82 L.M.O.

**EXXON COMPANY, U.S.A.**  
A DIVISION OF EXXON CORPORATION  
POST OFFICE BOX 1288  
BALTIMORE, MARYLAND 21203

BUILDING ADDITIONS  
TO SDP 71-56  
(ZONED M-2)

DRAWN BY: G. STEVENS  
CHECKED BY: *William J. Reilly* 4/12/82  
APPROVED BY: *William J. Reilly*  
SCALE: AS SHOWN

GENERAL NOTES AND ELEVATIONS  
7253 WASHINGTON BLVD  
ELK RIDGE, MARYLAND

DATE: 2-1-82  
FILE NO: 7042  
SHEET NO: 2  
DWG. NO: 8-2-82

FIRST EDITION SDP-82-59

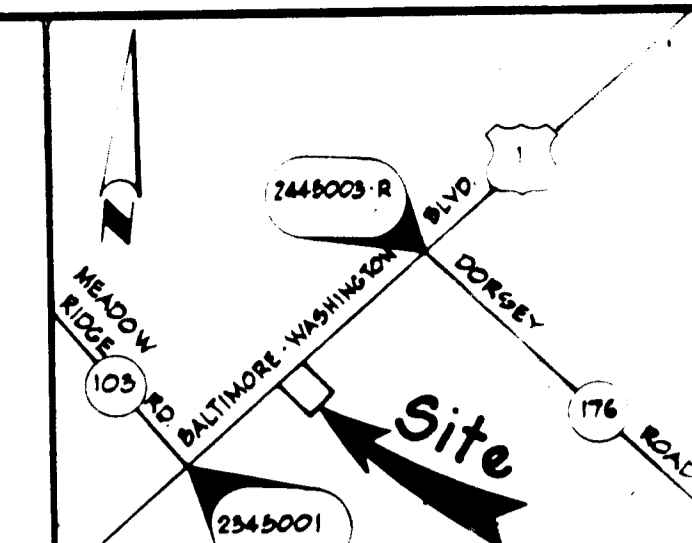
BALTIMORE - WASHINGTON BOULEVARD  
(60' R/W)  
U.S. ROUTE 1  
E.R.W.7

DONHEUR MEMORIAL PARK INC.  
874 / 478

ZONED M-1

SILT FENCE

STRAW BALE DIKE



VICINITY MAP  
SCALE: 1" = 1,000'

APPROVED  
DIVISION OF LAND DEVELOPMENT &  
ZONING ADMINISTRATION  
HOWARD COUNTY, MARYLAND  
DATE 5-18-82

APPROVED: For Public Water, Public Sewerage and Storm Drainage Systems and Roads

HOWARD COUNTY DEPARTMENT OF PUBLIC WORKS  
DATE 1-10-82  
DIRECTOR: *[Signature]*  
CHIEF, BUREAU OF ENGINEERING: *[Signature]*

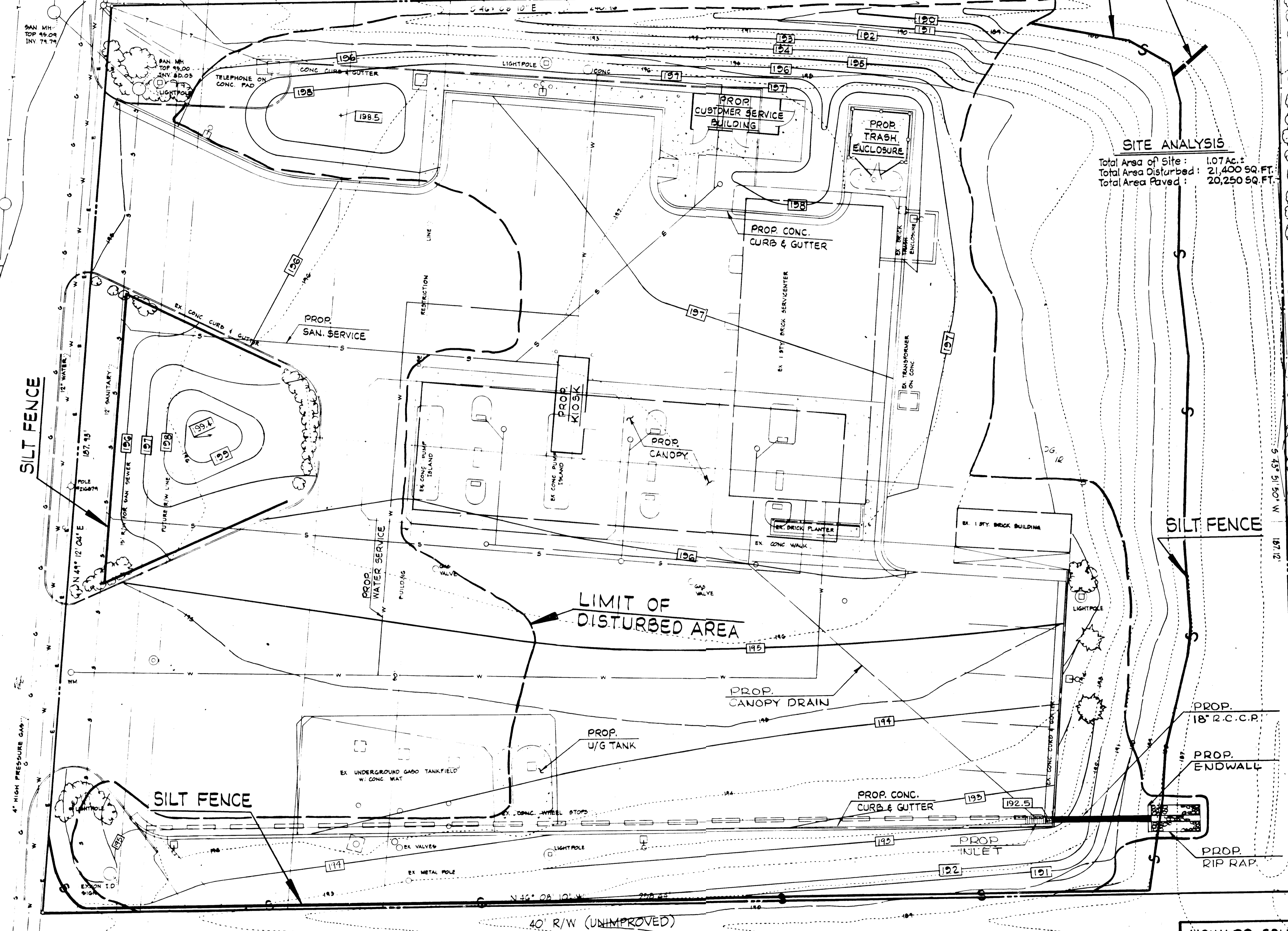
APPROVED: For Public Water and Public Sewerage Systems  
HOWARD COUNTY HEALTH DEPARTMENT  
DATE 7-27-82  
COUNTY HEALTH OFFICER: *[Signature]*

APPROVED: Howard County Office of Planning and Zoning  
DATE 7-27-82  
PLANNING DIRECTOR: *[Signature]*  
CHIEF, DIVISION OF LAND DEVELOPMENT AND ZONING ADMINISTRATION

APPROVED: For Sediment Control and Soil Erosion  
HOWARD SOIL CONSERVATION DISTRICT  
DATE 7-27-82  
U.S. DEPARTMENT OF AGRICULTURE  
DATE 7-27-82

CERTIFICATION BY DEVELOPER:  
"I/We certify that all development and construction will be done according to this plan, and that any responsible personnel involved in the construction project will have a Certificate of Attendance at a Department of Natural Resources Approved Training Program for the Control of Sediment and Erosion before beginning the project."  
Exxon Company U.S.A. Date 6/11/82

PROFESSIONAL ENGINEER:  
"I Certify that this plan for erosion and sediment control represents a practical and workable plan based on my personal knowledge of the site conditions and that it was prepared in accordance with the requirements of the Howard Soil Conservation District."  
Date 6/11/82



SITE ANALYSIS  
Total Area of Site: 1.07 Ac.  
Total Area Disturbed: 21,400 SQ. FT.  
Total Area Paved: 20,250 SQ. FT.

SILT FENCE

SILT FENCE

SILT FENCE

LIMIT OF DISTURBED AREA

PROP. 18" R.C.C.P.

PROP. ENDWALL

PROP. RIP RAP

40' R/W (UNIMPROVED)

THIS BLUEPRINT IS LOANED TO YOU  
AND MUST BE RETURNED WHEN IT HAS  
SERVED THE PURPOSE FOR WHICH INTENDED

REVISIONS  
REVISED: *[Handwritten notes]*  
ALTERED: *[Handwritten notes]*  
REMOVED: *[Handwritten notes]*  
ADDED: *[Handwritten notes]*  
RELOCATED: *[Handwritten notes]*

REVISIONS

EXXON COMPANY, U.S.A.  
(A DIVISION OF EXXON CORPORATION)  
POST OFFICE BOX 1288  
BALTIMORE, MARYLAND 21203

BUILDING ADDITIONS  
TO SDP 71-56  
(ZONED M-2)

DRAWN BY: *[Signature]*  
CHECKED BY: *[Signature]*  
APPROVED BY: *[Signature]*  
SCALE: 1" = 10'

HOWARD COUNTY FILE NO: SDP-82-59

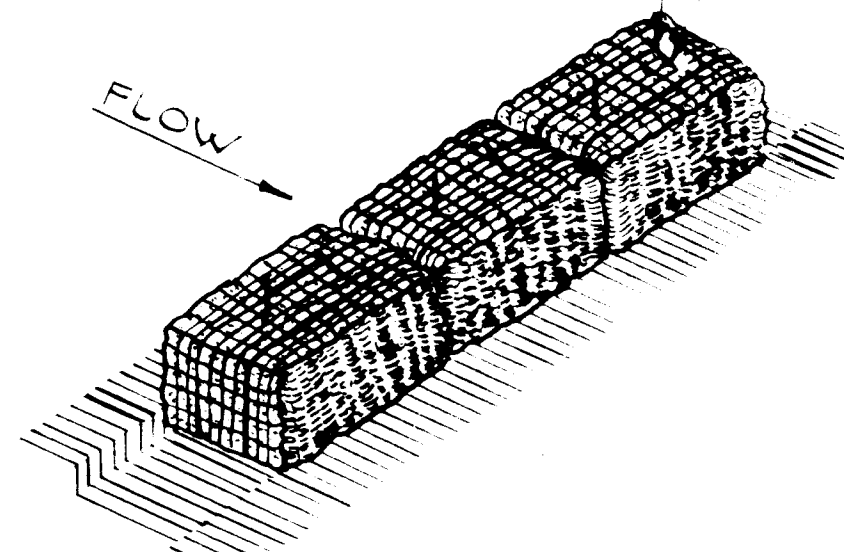
SEDIMENT CONTROL PLAN  
7253 WASHINGTON BLVD.  
ELKBRIDGE, MARYLAND

DATE: \_\_\_\_\_  
FILE NO: 7049  
SHEET NO: 3 OF 4  
DWG. NO: SC-1

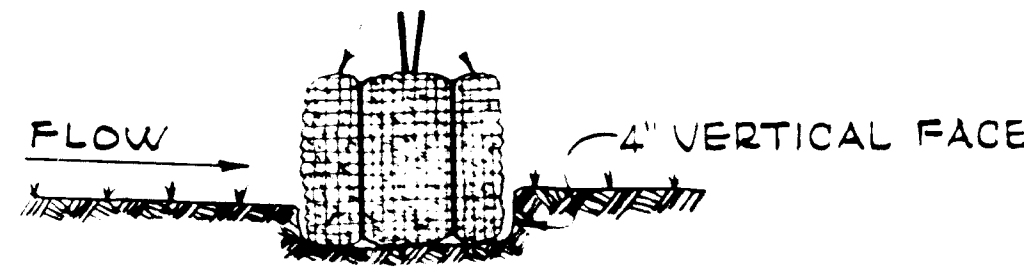
FIRST ELECTION DISTRICT SDP-82-59

ANGLE FIRST TOWARD PREVIOUSLY LAID BALE

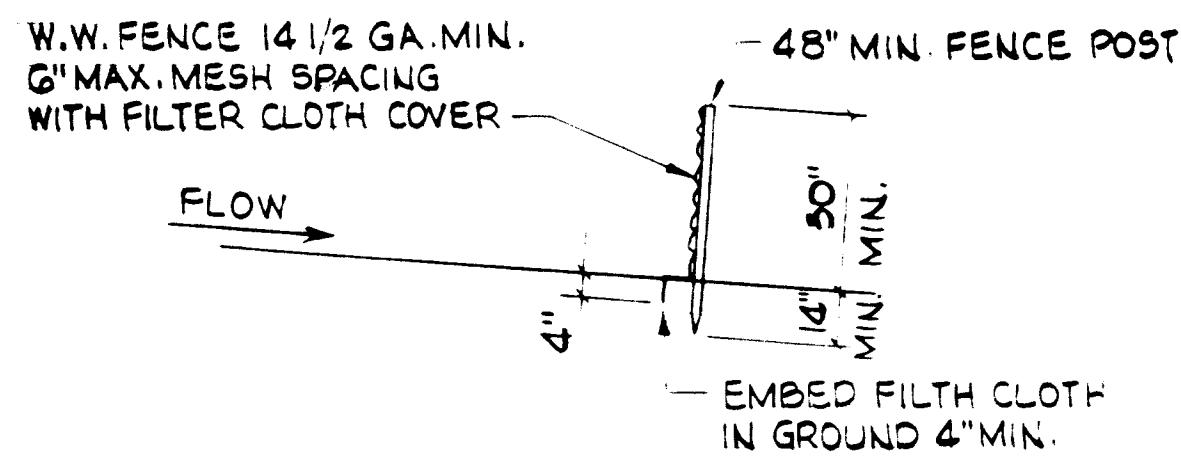
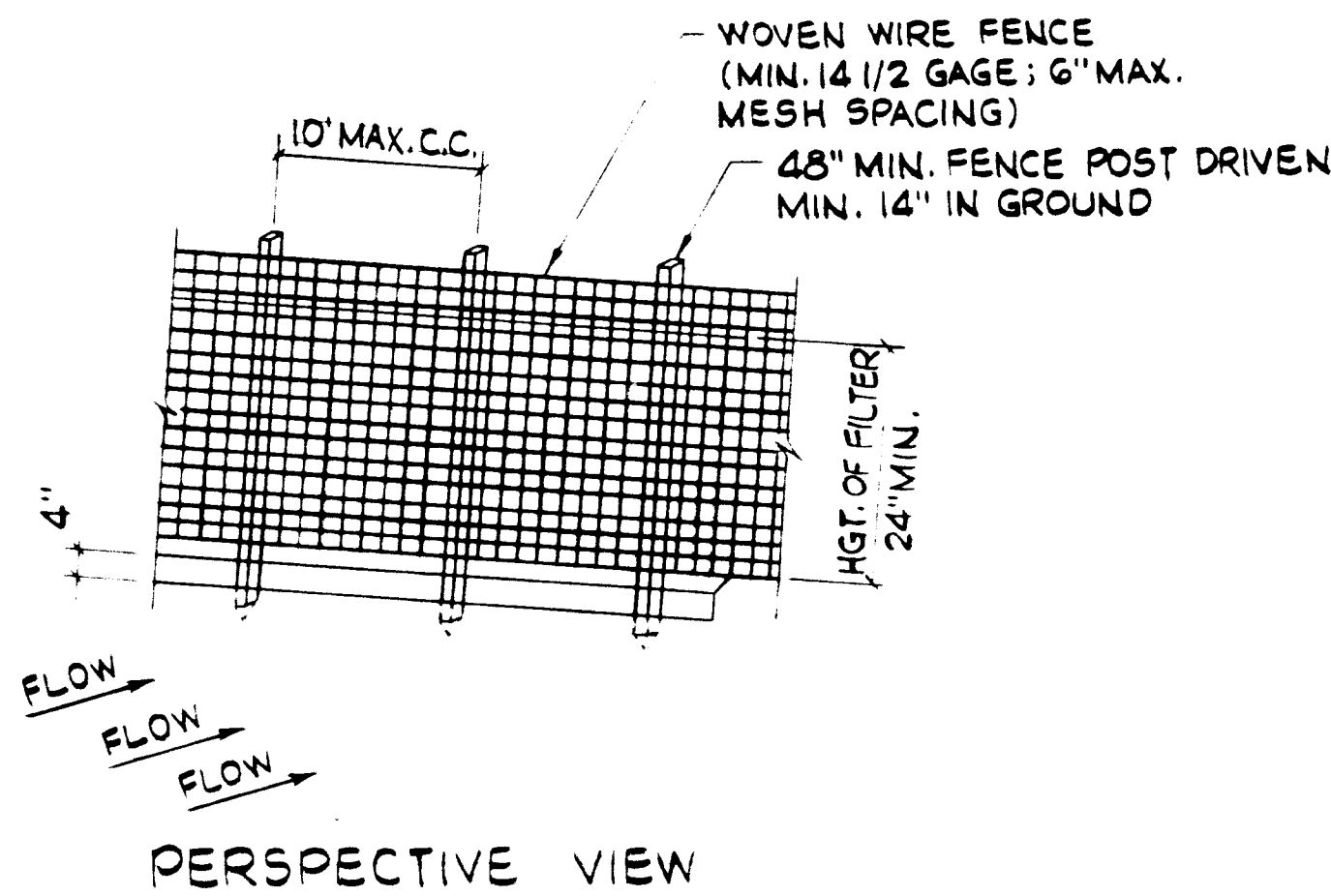
2 REBAR, STEEL PICKETS OR 2 X 2 STAKES 1/2 TO 2 IN GROUND



2 REBAR OR NYLON BOUND BALES



ANCHORING DETAIL EMBEDDING DETAIL  
**STRAW BALE DIKE**



**SECTION SILT FENCE DETAIL**  
NO SCALE

**CONSTRUCTION NOTES:**

- WOVEN WIRE FENCE TO BE FASTENED SECURELY TO FENCE POST WITH WIRE TIES OR STAPLES.
- FILTER CLOTH TO BE FASTENED SECURELY TO WOVEN WIRE TIES SPACED EVERY 24" AT TOP AND MID SECTION.

POST: STEEL EITHER T OR U TYPE OR 2" HARDWOOD.

FENCE: WOVEN WIRE, 1 1/2 GA. MAX. 6" MESH OPENING.

FILTER CLOTH: FILTER X  
MIRIFIL 100X,  
LAUREL EROSION CONTROL CLOTH  
BIDUM  
POLYFILTER X  
OR EQUAL

APPROVED: FOR PUBLIC WATER, PUBLIC SEWERAGE AND STORM DRAINAGE SYSTEMS AND ROADS.  
HOWARD COUNTY DEPARTMENT OF PUBLIC WORKS  
*Mark F. Neumy* 7-20-82  
DIRECTOR DATE

APPROVED: FOR PUBLIC WATER AND PUBLIC SEWERAGE SYSTEMS.  
HOWARD COUNTY HEALTH DEPARTMENT  
*William B. Rely* 7-20-82  
CHIEF, BUREAU OF ENGINEERING DATE

APPROVED: HOWARD COUNTY OFFICE OF PLANNING AND ZONING.  
*John J. Harlow* 7-27-82  
PLANNING DIRECTOR DATE

APPROVED: FOR SEDIMENT CONTROL AND SOIL EROSION  
HOWARD SOIL CONSERVATION DISTRICT  
*William J. Kane* 7-14-82  
U.S. DEPARTMENT OF AGRICULTURE DATE

CERTIFICATION BY DEVELOPER:  
"I CERTIFY THAT ALL DEVELOPMENT AND CONSTRUCTION WILL BE DONE ACCORDING TO THIS PLAN, AND THAT ANY RESPONSIBLE PERSONNEL INVOLVED IN THE CONSTRUCTION PROJECT WILL HAVE A CERTIFICATE OF ATTENDANCE AT A DEPARTMENT OF NATURAL RESOURCES APPROVED TRAINING PROGRAM FOR THE CONTROL OF SEDIMENT AND EROSION BEFORE BEGINNING THE PROJECT."  
*S. J. Brown* 6/11/82  
DATE  
EXXON COMPANY U.S.A.

PROFESSIONAL ENGINEER:  
"I CERTIFY THAT THIS PLAN FOR EROSION AND SEDIMENT CONTROL REPRESENTS A PRACTICAL AND WORKABLE PLAN BASED ON MY PERSONAL KNOWLEDGE OF THE SITE CONDITIONS AND THAT IT WAS PREPARED IN ACCORDANCE WITH THE REQUIREMENTS OF THE HOWARD SOIL CONSERVATION DISTRICT."  
*R. J. Howell* 6/18/82  
DATE

**SEDIMENT CONTROL SEQUENCE OF OPERATION**

- NOTIFY HOWARD SOIL CONSERVATION DISTRICT AT LEAST 3 DAYS PRIOR TO THE START OF ANY WORK.
- INSTALL SEDIMENT CONTROL DEVICES.
- REMOVE EXISTING SERVICE BUILDING AND OTHER STRUCTURES AS SHOWN ON PLOT PLAN.
- ROUGH GRADE SITE AS REQUIRED.
- INSTALL DRAINAGE SYSTEM COMPLETELY.
- FINE GRADE ALL SLOPES AND STABILIZE AS REQUIRED.
- INSTALL ALL UTILITIES, UNDERGROUND TANKS, CONDUITS, PRODUCT PIPING, ETC.
- INSTALL ALL NEW CONCRETE CURB AND GUTTER AND CANOPY AND BUILDING FOUNDATIONS.
- INSTALL BASE COURSE ON DRIVEWAY WHERE REQUIRED AND NEW CONCRETE PAVING ON DRIVEWAY AREA.
- COMPLETE CONSTRUCTION OF CANOPY, CUSTOMER SERVICE BUILDING, ETC.
- FINE GRADE AND SEED ALL AREAS NOT PREVIOUSLY COMPLETED.
- COMPLETE ALL CONSTRUCTION.
- REMOVE SEDIMENT CONTROL DEVICES.

**SEDIMENT CONTROL NOTES**

ALL DISTURBED AREAS NOT PAVED OR SOODED SHALL BE STABILIZED IN ACCORDANCE WITH THE FOLLOWING:

- SITE PREPARATION:
  - HARROW OR DISC IN AREAS PROPOSED TO BE SEEDED WITH THE FOLLOWING MATERIALS AT THE SPECIFIED RATE TO A DEPTH OF 3".
    - PULVERIZED LIMESTONE AT 1 1/2 TONS/ACRE.
    - COMMERCIAL FERTILIZER 10-10-10 AT 3/4 TONS/ACRE.
    - SUPER PHOSPHATE OF 600 LBS/ACRE.
- SEEDING:
  - SOW THE FOLLOWING SEED MIXTURE AT THE RATE OF 200 LBS./ACRE WITH A MECHANICAL SPREADER.
    - TEMPORARY: ITALIAN OR PERENNIAL RYE GRASS.
    - PERMANENT: 40% MARION BLUE GRASS 40% SOUTH DAKOTA BLUE GRASS 40% SOUTH DAKOTA BLUE GRASS AND 20% PENN LAWN CREEPING RED FESCUE.
  - THE SEEDED AREA SHALL THEN BE RACKED WITH A YORK RAKE (MINIMUM OF 2 PASSES) COVERED AND COMPACTED WITH CULTIPACKER OR OTHER APPROVED METHOD.
- MULCHING:
  - SEEDED AREAS SHALL BE UNIFORMLY MULCHED IMMEDIATELY AFTER SEEDING WITH UNWEATHERED SMALL GRAIN STRAW AT THE RATE OF 1 1/2 TO 2 TONS/ACRE.
  - TIE MULCH DOWN WITH LIQUID ASPHALT AT 0.1 GAL./SQ. YD. OR EMULSIFIED ASPHALT AT 0.04 GAL./SQ. YD. ON MULCH NETTING.

**SITE ANALYSIS**

TOTAL AREA OF SITE: 1.07 AC.  
TOTAL AREA DISTURBED: 21,400 SQ. FT.  
TOTAL AREA PAVED: 20,250 SQ. FT.

APPROVED  
DIVISION OF LAND DEVELOPMENT & ZONING ADMINISTRATION  
HOWARD COUNTY, MARYLAND  
DATE 5-18-82

HOWARD COUNTY FILE NO: SDP-82-59

THIS BLUEPRINT IS LOANED TO YOU AND MUST BE RETURNED WHEN IT HAS SERVED THE PURPOSE FOR WHICH INTENDED

REVISIONS:  
REVISED 5/24/82 REVISION BACK TO 1/14/82  
ADDED STRAW BALE DIKE DETAIL 5-27-82 LMD

REVISIONS

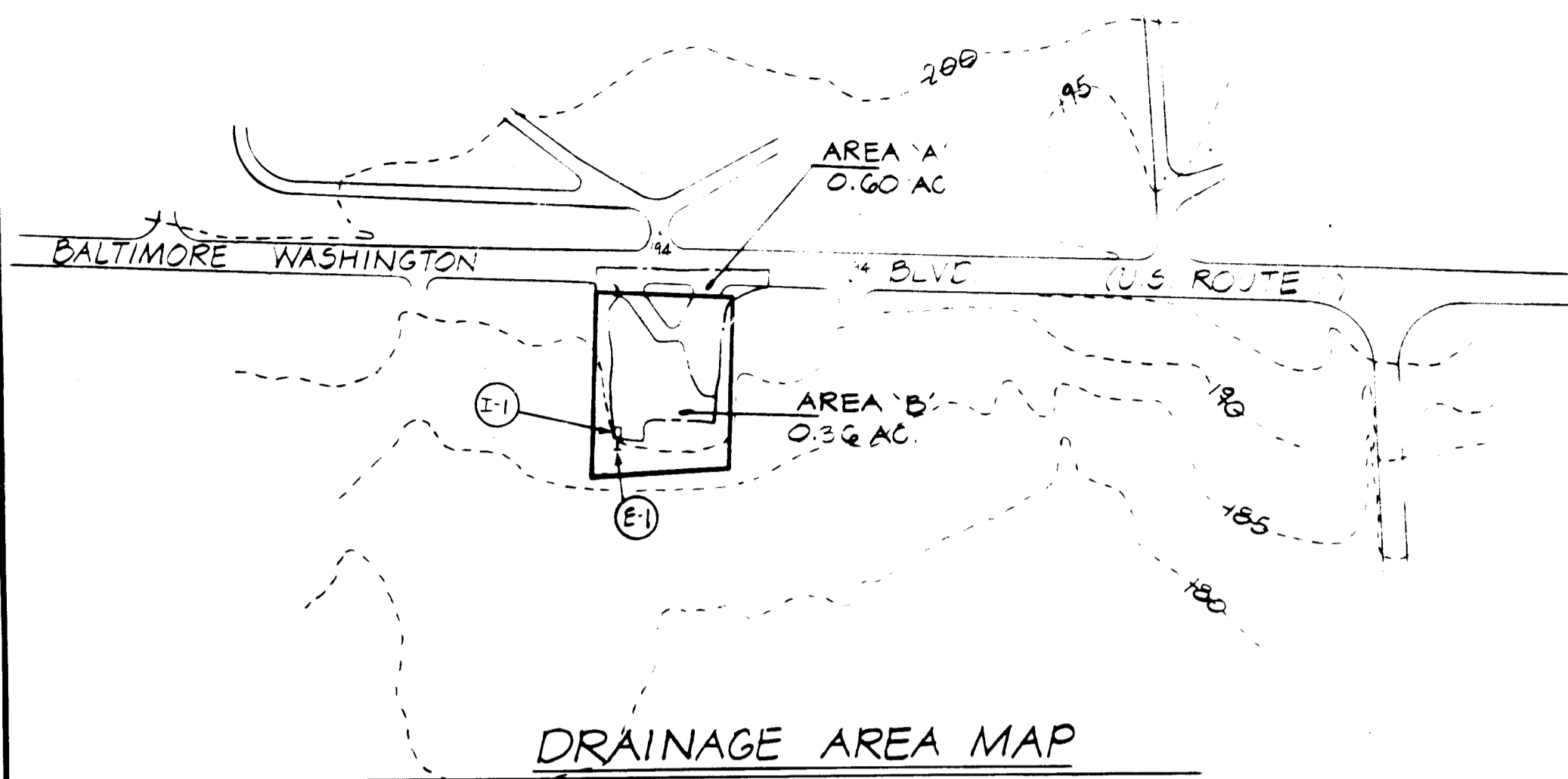
**EXXON COMPANY, U.S.A.**  
(A DIVISION OF EXXON CORPORATION)  
POST OFFICE BOX 1288  
BALTIMORE, MARYLAND 21203

BUILDING ADDITIONS TO SDP 7-56 (ZONED M-2)

DRAWN BY: G. STEVENS  
CHECKED BY: 4/12/82  
APPROVED BY: R. J. Howell  
SCALE:

SEDIMENT CONTROL PLAN  
7253 WASHINGTON BLVD.  
ELKRIDGE, MARYLAND

DATE: 7042  
SHEET NO.: 4 OF 6  
DWG. NO.: SC-2



DRAINAGE AREA MAP

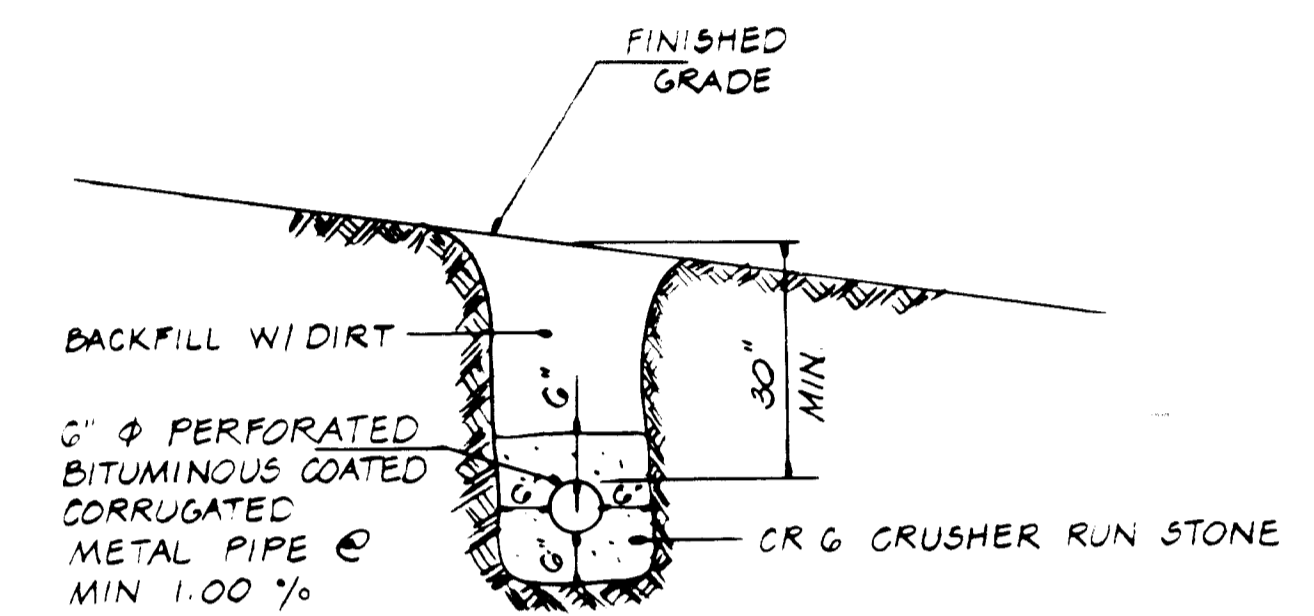
SCALE: 1" = 200'

STRUCTURE SCHEDULE					
NO	TYPE	"Q" <sub>20</sub>	INV. OUT	INV. IN	TOP ELEV
I	MSHA TYPE 'E' COMB. INLET	2.67	189.00		192.50
E	MSHA STANDARD END SUPPORT WALL	2.67	187.24		188.49

DRAINAGE COMPUTATIONS											
LOCATION	AREA	ACRES	"C"	"CA"	"CA"	TIME	CONC.	"MIN"	"I"	"Q" <sub>20</sub>	REMARKS
FROM	TO	SUB	TOTAL								
I-1	B	0.36	0.95	0.34							20 Yr STORM
I-1	E-1	0.36	0.95	0.34							20 Yr STORM

INLET COMPUTATIONS											
INLET NO	REMARKS	T/C	A	C	I	Q <sub>20</sub>	Q	STR	INLET TYPE	CAP	SURCH
		MIN	ACRES		IN/HR	CFS	SURCH	SLOPE		CFS	CFS
I-1	SUMP	5.0	0.36	0.95	7.8	2.67		8.6	'E' COMB.		

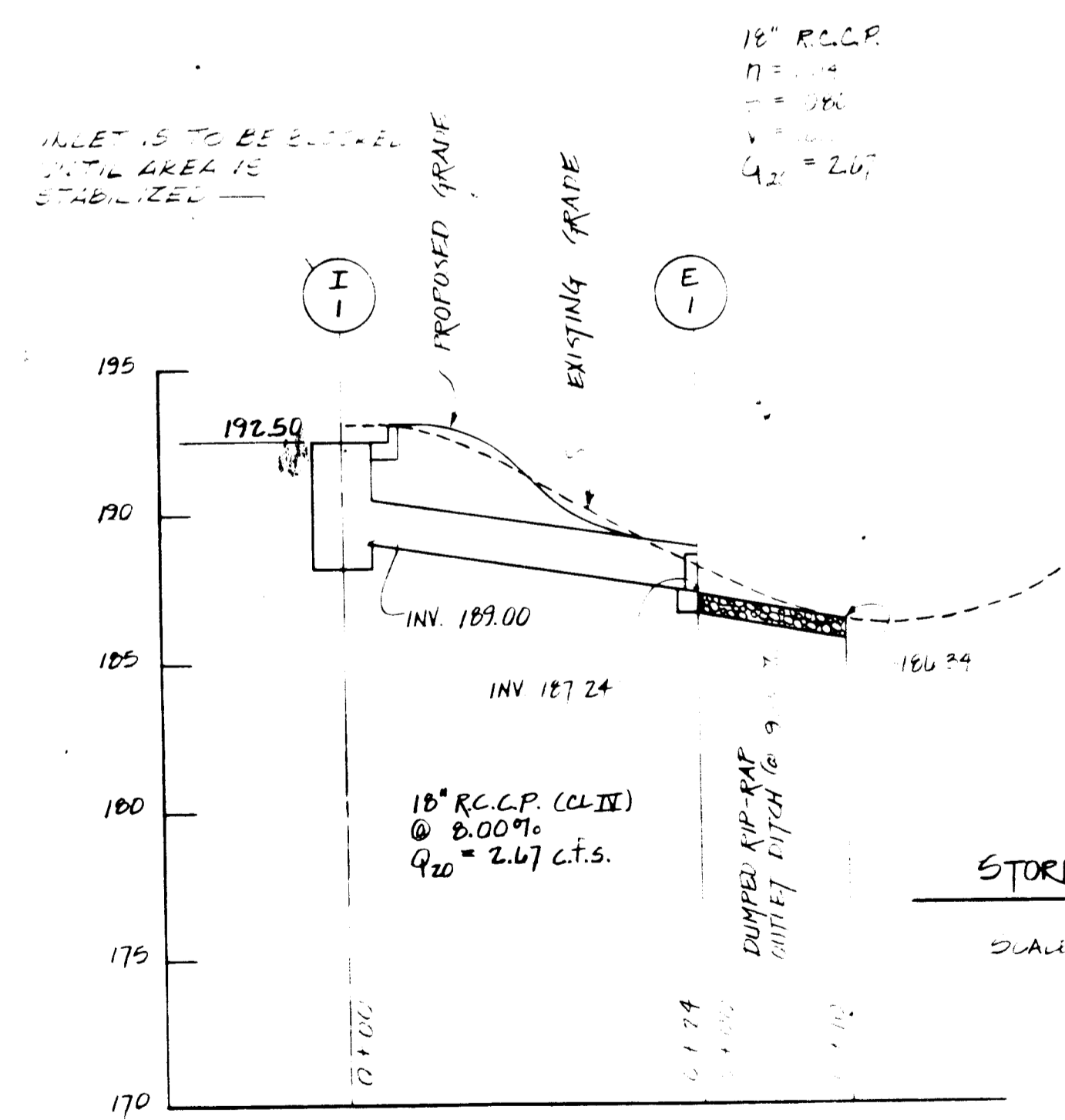
CERTIFICATION BY DEVELOPER:  
 "I/WE CERTIFY THAT ALL DEVELOPMENT AND CONSTRUCTION WILL BE DONE ACCORDING TO THIS PLAN, AND THAT ANY RESPONSIBLE PERSONNEL INVOLVED IN THE CONSTRUCTION PROJECT WILL HAVE A CERTIFICATE OF ATTENDANCE AT A DEPARTMENT OF NATURAL RESOURCES APPROVED TRAINING PROGRAM FOR THE CONTROL OF SEDIMENT AND EROSION BEFORE BEGINNING THE PROJECT."  
 R.B. Reed 6/4/82  
 DATE  
 EXXON COMPANY U.S.A.



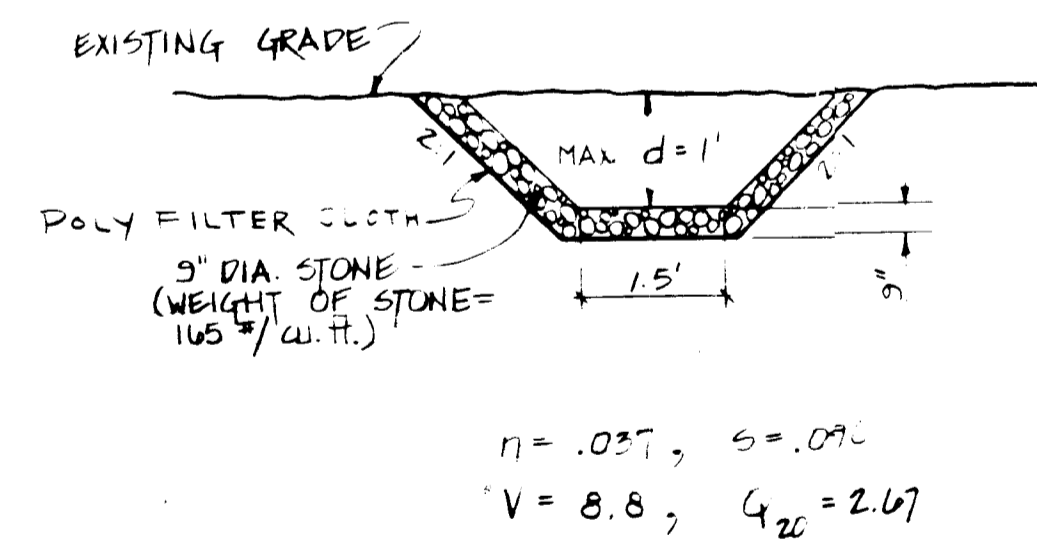
UNDERDRAIN BEDDING DETAIL

NO SCALE

NOTE: TO BE SET IN THE FIELD BY THE ENGINEER



STORM DRAIN PROFILE



OUTLET DITCH

NO SCALE

APPROVED: For Public Water, Public Sewerage and Storm Drainage Systems and Roads  
 HOWARD COUNTY DEPARTMENT OF PUBLIC WORKS  
 Director: [Signature] DATE: 7-20-82  
 Chief, Bureau of Engineering: [Signature] DATE: 7-20-82

APPROVED: For Public Water and Public Sewerage Systems  
 HOWARD COUNTY HEALTH DEPARTMENT  
 County Health Officer: [Signature] DATE: 7-27-82

APPROVED: Howard County Office of Planning and Zoning  
 Planning Director: [Signature] DATE: 7-27-82  
 Chief, Division of Land Development and Zoning Administration: [Signature] DATE: 7-27-82

APPROVED  
 DIVISION OF LAND DEVELOPMENT & ZONING ADMINISTRATION  
 HOWARD COUNTY, MARYLAND  
 DATE 5-18-82



HOWARD COUNTY FILE NO: SDP-82-59

THIS BLUEPRINT IS LOANED TO YOU AND MUST BE RETURNED WHEN IT HAS SERVED THE PURPOSE FOR WHICH INTENDED

REVISIONS:  
 REVISION 1: REVISED STORM DRAIN PROFILE AND OUTLET DITCH X-SECT  
 7/14/82 SDP  
 ADDED FIRST ELECTION DISTRICT, 5-28-82 LIND.

REVISIONS:

EXXON COMPANY, U.S.A.  
 (A DIVISION OF EXXON CORPORATION)  
 POST OFFICE BOX 1288  
 BALTIMORE, MARYLAND 21203

BUILDING ADDITIONS TO SDP-71-56 (ZONED M-2)

DRAWN G. STEVENS  
 CHECKED BY: [Signature] 4/12/82  
 APPROVED BY: R.B. Reed 4/12/82  
 SCALE: AS SHOWN

STORM DRAIN PROFILES & COMPUTATIONS  
 7253 WASHINGTON BLVD  
 ELK RIDGE, MARYLAND  
 FIRST ELECTION DISTRICT

DATE: 5-18-82  
 FILE NO: 7549  
 SHEET NO: 5 OF 5  
 DWG NO: 50  
 SDP-82-59

**BALTIMORE - WASHINGTON BOULEVARD**  
 (50' R/W)  
 U.S. ROUTE 1

DONHEUR MEMORIAL PARK INC  
 874 1478

ZONED M-2

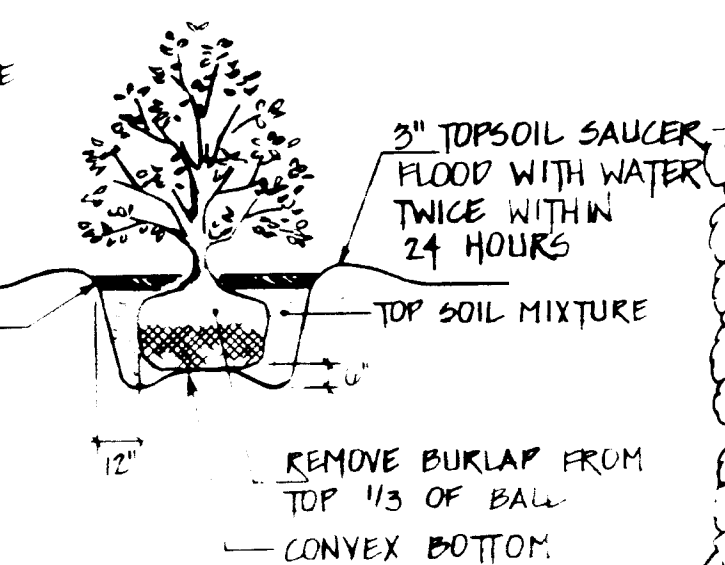
**PLANT LIST**

KEY	QUANT.	BOTANICAL NAME COMMON NAME	SIZE	ROOT
T1	20	AGER SACCHARUM GREEN MOUNTAIN SUGAR MAPLE	2-2 1/2" CAL	B & B
T2	5	QUERCUS ACUTISSIMA SAWTOOTH OAK	2-2 1/2" CAL	B & B
T3	2	PIRUS GALLERYANA BRADFORD PEAR	2-2 1/2" CAL	E & E
S	10	ILEX GRENATA HETZ. HETZ HOLLY	24" - 30" HT.	B & E
S2	15	VIBURNUM RHYTIDOPHYLLUM LEATHERLEAF VIBURNUM	3'-4' HT.	CONT. OR B & B
GC1	45	COTONEASTER SALICIFOLIA REPANS PARK CARPET COTONEASTER	15-18" SPD.	CONT.

**VICINITY MAP**  
 SCALE: 1" = 1,000'

**NOTES**

- SEE SPECIFICATIONS FOR ADDITIONAL INFORMATION
- ALL SHRUB AND GROUNDCOVER BEDS ARE TO RECEIVE 3" OF ORGANIC MATTER AND THE APPROPRIATE TYPE AND QUANTITY OF FERTILIZER TILLED INTO THE TOP 6"-8" OF SOIL.
- ALL BEDS, TREES, AND SHRUBS ARE TO RECEIVE 3" OF MULCH
- CALL "MISS. UTILITY" (659-0100) BEFORE DOING ANY DIGGING
- ALL EXISTING SHRUBS TO REMAIN

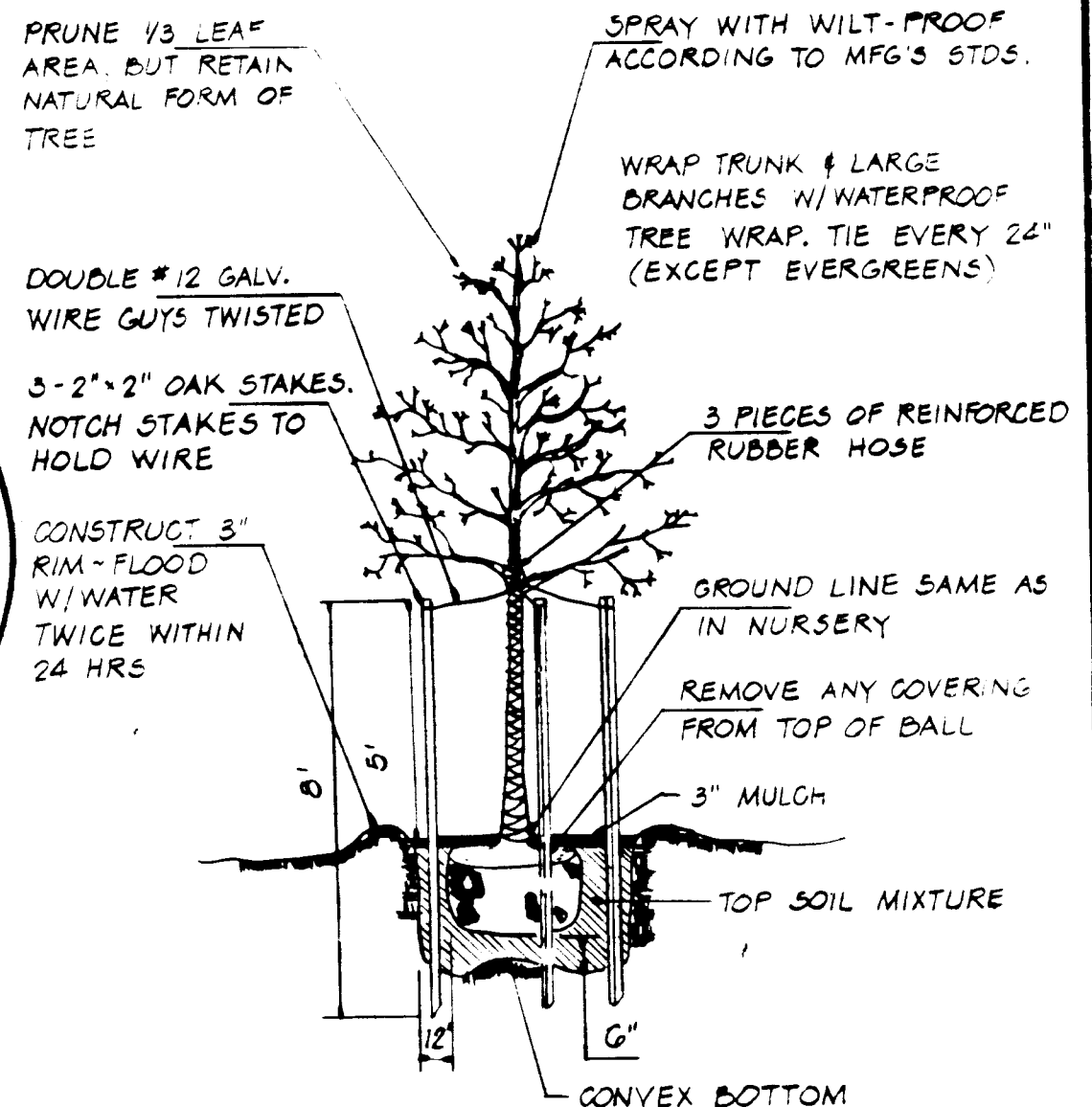


**PLANTING DETAIL**

APPROVED For Public Water, Public Sewerage and Storm Drainage Systems and Roads  
 HOWARD COUNTY DEPARTMENT OF PUBLIC WORKS  
 DIRECTOR *John E. Nunn* DATE 7-26-82  
 CHIEF, BUREAU OF ENGINEERING DATE 7-26-82

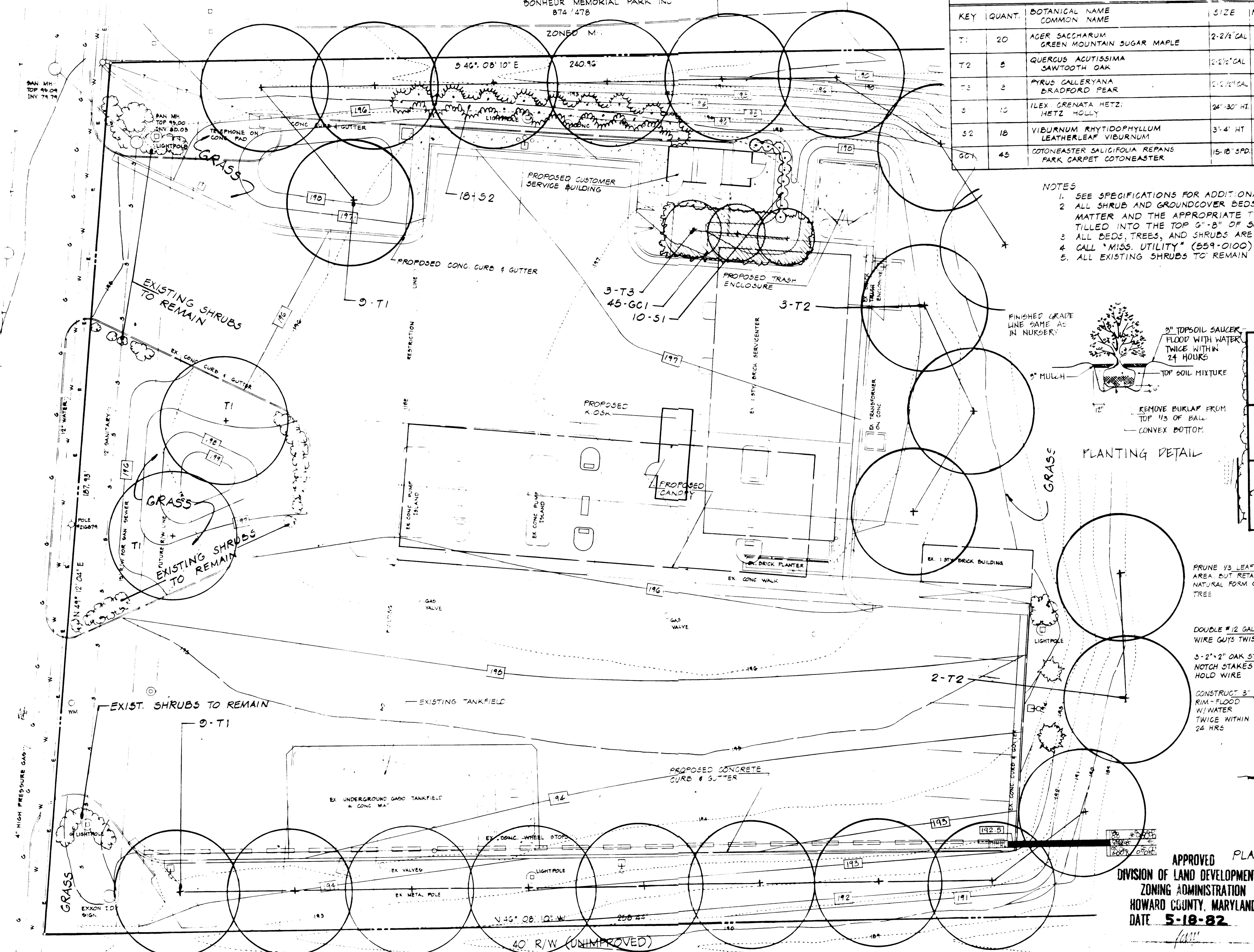
APPROVED For Public Water and Public Sewerage Systems  
 HOWARD COUNTY HEALTH DEPARTMENT  
 COUNTY HEALTH OFFICER *John E. Nunn* DATE 7-27-82

APPROVED Howard County Office of Planning and Zoning  
 PLANNING DIRECTOR *John E. Nunn* DATE 7-27-82  
 CHIEF, DIVISION OF LAND DEVELOPMENT AND ZONING ADMINISTRATION DATE 7-27-82



APPROVED PLANTING DETAIL  
 DIVISION OF LAND DEVELOPMENT & ZONING ADMINISTRATION  
 HOWARD COUNTY, MARYLAND  
 DATE 5-18-82

HOWARD COUNTY FILE NO: SDP-82-59



THIS BLUEPRINT IS LOANED TO YOU AND MUST BE RETURNED WHEN IT HAS SERVED THE PURPOSE FOR WHICH INTENDED

REVISIONS  
 RELOCATED (T1) TREE, ADDED SHRUB PLANTING DETAIL  
 4/1/82 S.H.P.  
 REMOVED I.S.B. 3-3-82 L.M.O.  
 ADDED FIRST ELECTION DISTRICT. 5-28-82 L.M.O.  
 RELOCATED KIOSK AND CENTER ISLAND 5/11/82

CERTIFICATION BY DEVELOPER: I/we certify that all development and construction will be done according to this plan, and that any responsible personnel involved in the construction project will have a Certificate of Attendance at a Department of Natural Resources Approved Training Program for the Control of Sediment and Erosion before beginning the project.  
*S. G. Lam* 4/11/82  
 EXXON COMPANY, U.S.A. D.R.C.

**EXXON COMPANY, U.S.A.**  
 A DIVISION OF EXXON CORPORATION  
 POST OFFICE BOX 1288  
 BALTIMORE, MARYLAND 21203

**BUILDING ADDITIONS TO SDP-71-56 (ZONED M-2)**

DRAWN BY: G. STEVENS  
 CHECKED BY: 4/22/82  
 APPROVED BY: *R. R. Reed*  
 SCALE: 1" = 10'

**LANDSCAPE PLAN**  
 7253 WASHINGTON BLVD.  
 ELKRIDGE, MARYLAND

DATE: 2-1-82  
 FILE NO: 704  
 SHEET NO: 6  
 DWG NO: 6  
 SDP-82-59