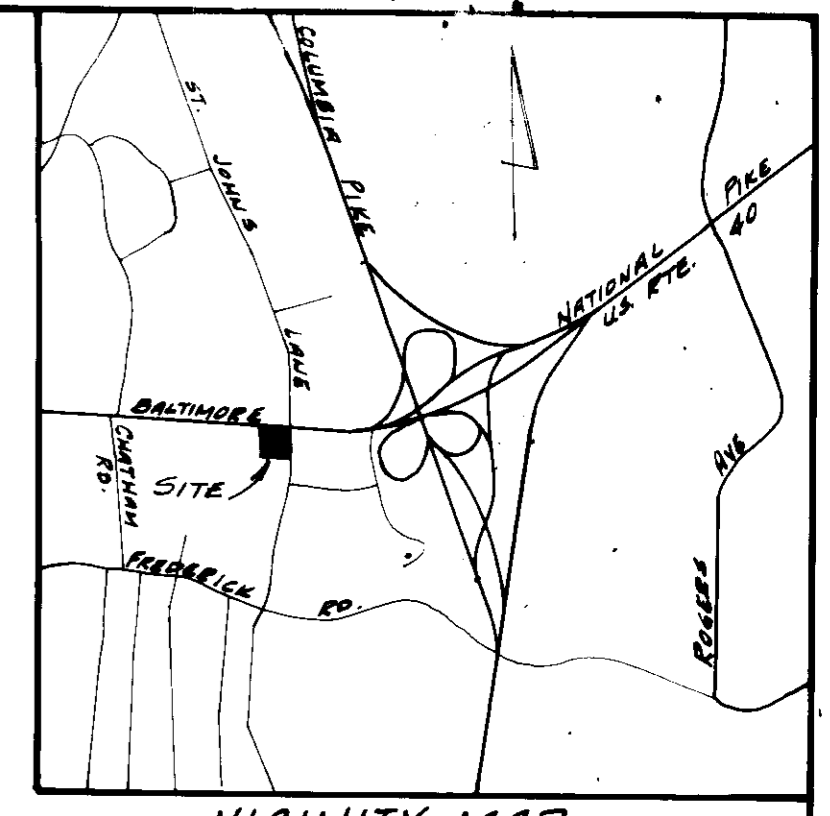
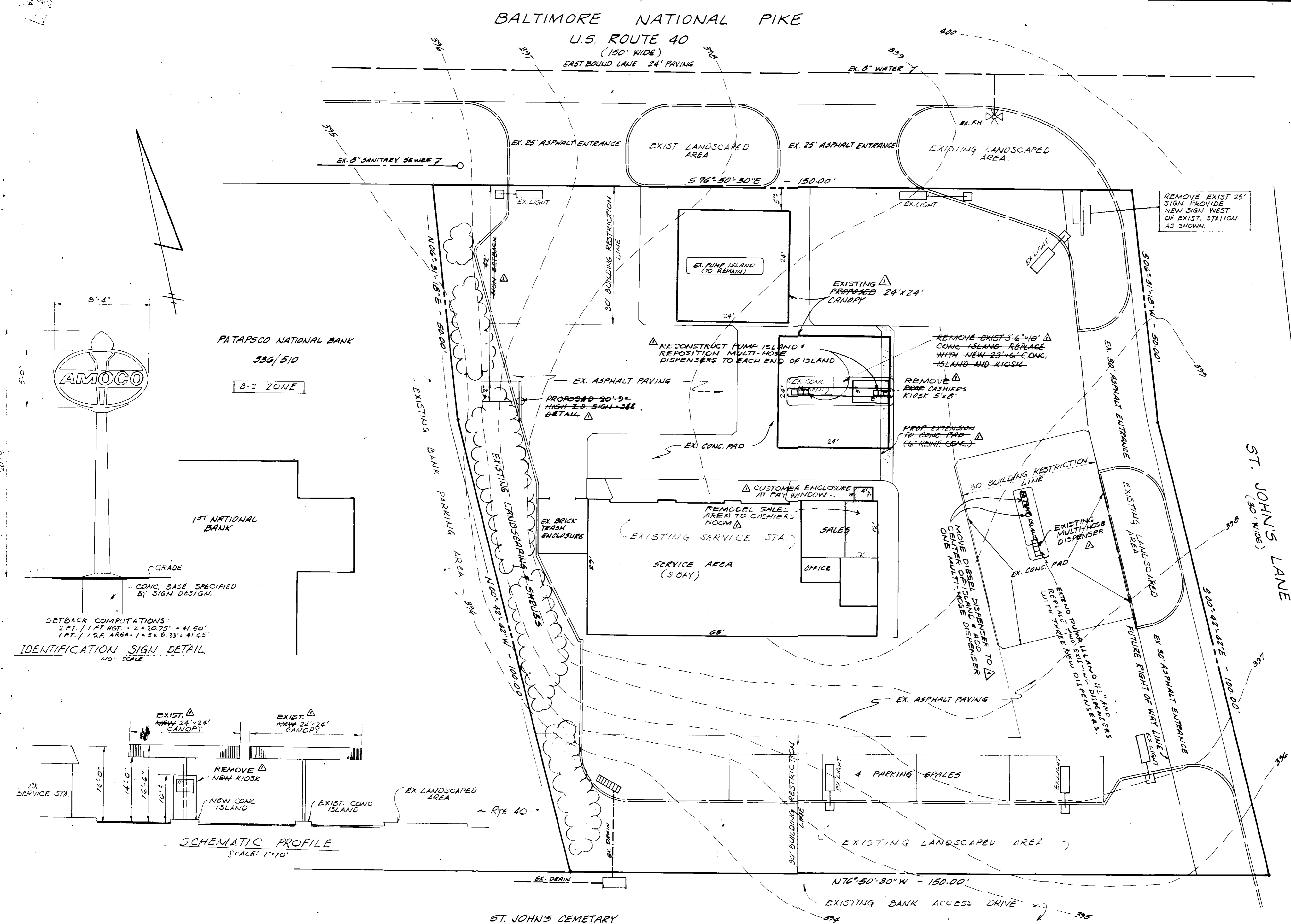


BALTIMORE NATIONAL PIKE

U.S. ROUTE 40

(150' WIDE)

EAST BOUND LANE 24' PAVING



SITE ANALYSIS

- TOTAL SITE AREA 22,013 Sq. Ft.
- PRESENT ZONING B-2
- EXISTING FLOOR SPACE
EXISTING SERVICE GARAGE 1,827 Sq. Ft.
PROPOSED CHASHIEF KIOSK 40 Sq. Ft.
- PARKING SPACES REQUIRED:
PARKING SPACES PROVIDED ON PREVIOUS APPROVED S.D.P. = 4
NO ADDITIONAL SERVICE AREAS, SERVICE VEHICLES OR EMPLOYEES ARE INCLUDED IN THIS SUBMITTAL - NO ADDITIONAL PARKING IS REQUIRED.
- LANDSCAPED AREA (4900 SF) 22%
- SITE SUBJECT TO BA CASE NO. 81-01
- NEW SIGN SETBACK REQ'D - 4165' PROVIDED - 42'

APPROVED
DIVISION OF LAND DEVELOPMENT &
ZONING ADMINISTRATION
HOWARD COUNTY, MARYLAND
DATE 8-20-81

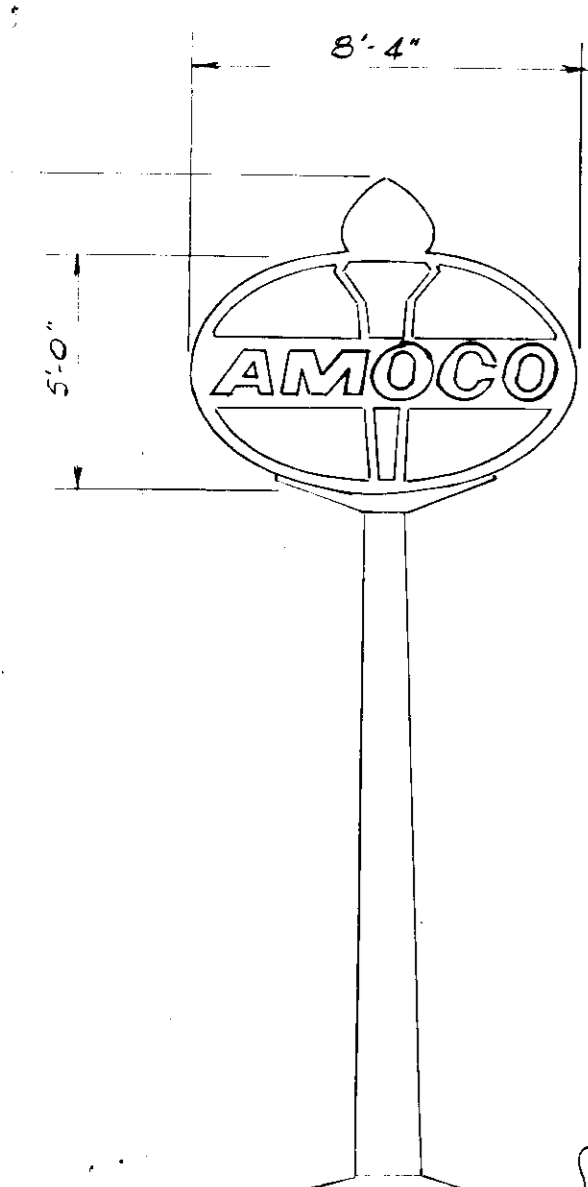
TITLE REFERENCE: LEASE FROM ST. JOHN'S CEMETARY TO THE AMERICAN OIL COMPANY AS RECORDED IN LIBER RHM PAGE 227.

SITE DEVELOPMENT PLAN
AMOCO OIL COMPANY
U.S. ROUTE 40 AND ST. JOHN'S LANE
2ND ELECTION DISTRICT HOWARD CO, MARYLAND
TAX MAP 24 PARCEL 759

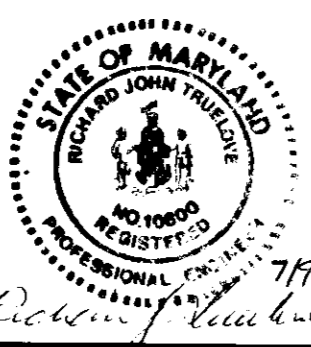
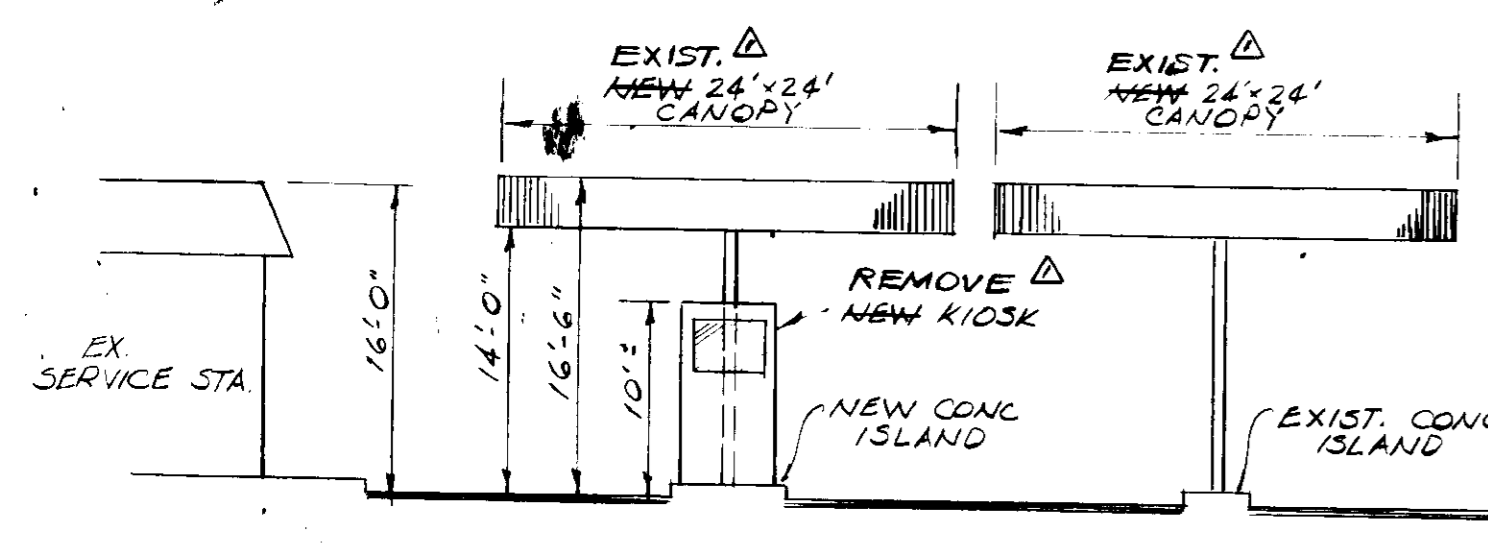
OWNER AND DEVELOPER
AMOCO OIL COMPANY
1 NORTH CHARLES STREET
BALTIMORE, MARYLAND 21201

APR ASSOCIATES, INC.
LAND SURVEYORS AND ENGINEERS
7427 HAFORD ROAD
BALTIMORE, MARYLAND 21234
TELEPHONE 444-4312

S.D.P. B2-11
DESIGN BY: AMOCO
DRAWN BY: B.H.H.
PROJECT NO.
DATE: 7/11/81
SCALE: 1" = 10'
SHEET NO. 1 OF 1



SETBACK COMPUTATIONS:
2 FT. / 1 FT. HGT. = 2' x 20.75' = 41.50'
1 FT. / 1/2 FT. AREA = 1' x 25' x 8.33' = 41.65'



Δ DENOTES 7-9-91 REV.

NO.	DATE	REVISIONS DESCRIPTION	BY
1	7-9-91	REVISIONS PER REL LINED "AS BUILT"	R.H.H.

APPROVED: FOR PUBLIC WATER AND PUBLIC SEWERAGE SYSTEM.
HOWARD COUNTY HEALTH DEPARTMENT

Joyce B. ... 9-8-81
COUNTY HEALTH OFFICER DATE

APPROVED: HOWARD COUNTY OFFICE OF PLANNING AND ZONING.

Thomas H. ... 9-9-81
PLANNING DIRECTOR DATE

John W. ... 9-9-81
CHIEF DIVISION OF LAND DEVELOPMENT & ZONING ADMIN. DATE

APPROVED: FOR PUBLIC WATER, PUBLIC SEWERAGE, STORM DRAINAGE SYSTEMS AND PUBLIC ROADS.
HOWARD COUNTY DEPARTMENT OF PUBLIC WORKS

George F. ... 9-2-81
DIRECTOR DATE

William B. ... 9/2/81
CHIEF BUREAU OF ENGINEERING DATE