



APPROVED: HOWARD COUNTY OFFICE OF PLANNING AND ZONING  
 PLANNING DIRECTOR: *[Signature]* DATE: 8-13-81  
 CHIEF, DIVISION OF LAND DEVELOPMENT AND ZONING ADMINISTRATION

APPROVED: HOWARD COUNTY HEALTH DEPARTMENT  
 COUNTY HEALTH OFFICER: *[Signature]* DATE: 8-8-81

APPROVED: HOWARD COUNTY DEPARTMENT OF PUBLIC WORKS  
 DIRECTOR: *[Signature]* DATE: 8-12-81  
 CHIEF, BUREAU OF ENGINEERING: *[Signature]* DATE: 8-11-81

BY THE DEVELOPER:  
 Signature of Developer: *[Signature]* DATE: 7-31-81

BY THE ENGINEER:  
 Signature of Engineer: *[Signature]* DATE: 7/20/81  
 DAVID L. GREGORY

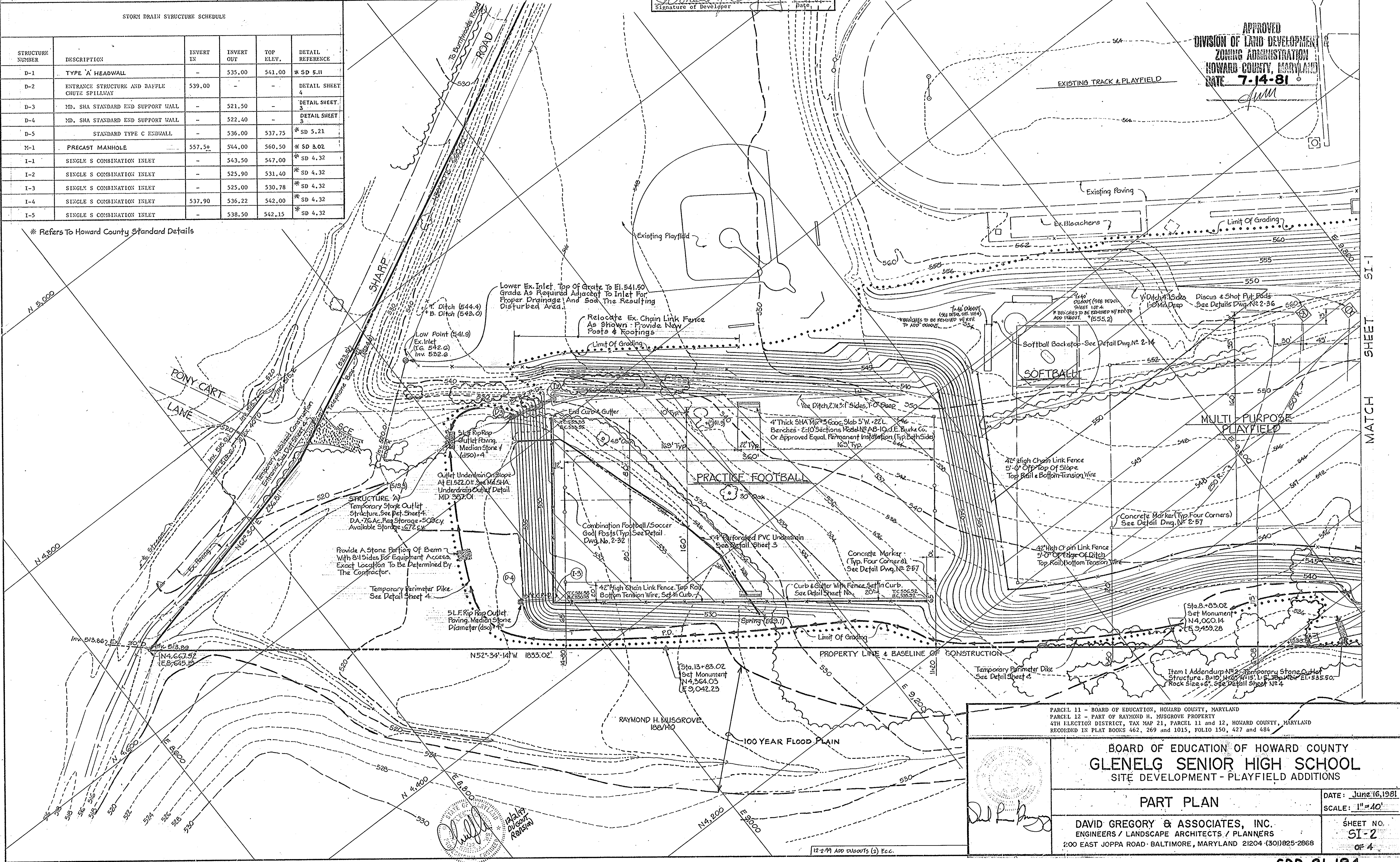
Reviewed for: HOWARD S.C.D.  
 Name: *[Signature]* DATE: 8/4/81  
 U.S. Soil Conservation Service

THIS DEVELOPMENT PLAN IS APPROVED FOR SOIL EROSION AND SEDIMENT CONTROL BY THE HOWARD SOIL CONSERVATION DISTRICT  
 Signature: *[Signature]* DATE: 8-2-81  
 HOWARD S.C.D.

STORM DRAIN STRUCTURE SCHEDULE

STRUCTURE NUMBER	DESCRIPTION	INVERT IN	INVERT OUT	TOP ELEV.	DETAIL REFERENCE
D-1	TYPE 'A' HEADWALL	-	535.00	541.00	* SD 5.11
D-2	ENTRANCE STRUCTURE AND BAFFLE CHUTE SPILLWAY	539.00	-	-	DETAIL SHEET 4
D-3	MD. SHA STANDARD END SUPPORT WALL	-	521.50	-	DETAIL SHEET 3
D-4	MD. SHA STANDARD END SUPPORT WALL	-	522.40	-	DETAIL SHEET 3
D-5	STANDARD TYPE C ENDWALL	-	536.00	537.75	* SD 5.21
M-1	PRECAST MANHOLE	557.5+	544.00	560.50	* SD 3.02
I-1	SINGLE S COMBINATION INLET	-	543.50	547.00	* SD 4.32
I-2	SINGLE S COMBINATION INLET	-	525.90	531.40	* SD 4.32
I-3	SINGLE S COMBINATION INLET	-	525.00	530.78	* SD 4.32
I-4	SINGLE S COMBINATION INLET	537.90	536.22	542.00	* SD 4.32
I-5	SINGLE S COMBINATION INLET	-	538.50	542.15	* SD 4.32

\* Refers To Howard County Standard Details



APPROVED  
 DIVISION OF LAND DEVELOPMENT & ZONING ADMINISTRATION  
 HOWARD COUNTY, MARYLAND  
 DATE: 7-14-81  
*[Signature]*

PARCEL 11 - BOARD OF EDUCATION, HOWARD COUNTY, MARYLAND  
 PART OF RAYMOND H. MUSGROVE PROPERTY  
 4TH ELECTORAL DISTRICT, TAX MAP 21, PARCEL 11 and 12, HOWARD COUNTY, MARYLAND  
 RECORDED IN PLAT BOOKS 462, 269 and 1015, FOLIO 150, 427 and 484

BOARD OF EDUCATION OF HOWARD COUNTY  
**GLENELG SENIOR HIGH SCHOOL**  
 SITE DEVELOPMENT - PLAYFIELD ADDITIONS

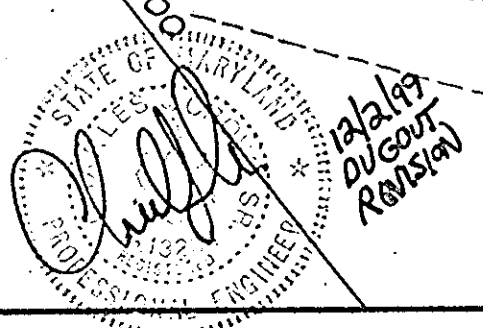
PART PLAN

DATE: June 16, 1981  
 SCALE: 1" = 40'

DAVID GREGORY & ASSOCIATES, INC.  
 ENGINEERS / LANDSCAPE ARCHITECTS / PLANNERS  
 200 EAST JOPPA ROAD - BALTIMORE, MARYLAND 21204 (301) 925-2868

SHEET NO. SI-2 OF 4

MATCH SHEET SI-1



12-294 APP EXCERPTS (2) E.C.

SDP-81-184

APPROVED: HOWARD COUNTY OFFICE OF PLANNING AND ZONING

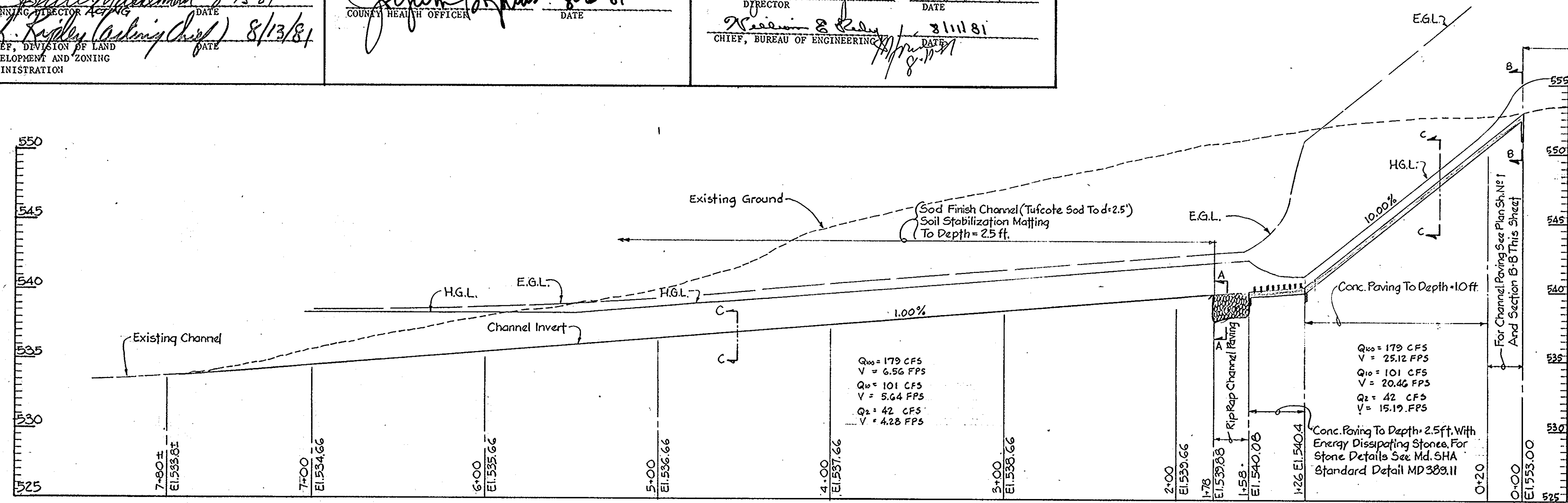
APPROVED: HOWARD COUNTY HEALTH DEPARTMENT

APPROVED: HOWARD COUNTY DEPARTMENT OF PUBLIC WORKS

PLANNING DIRECTOR: *John W. ...* DATE: 8/13/81  
CHIEF, DIVISION OF LAND DEVELOPMENT AND ZONING ADMINISTRATION

COUNTY HEALTH OFFICER: *...* DATE: 8/13/81

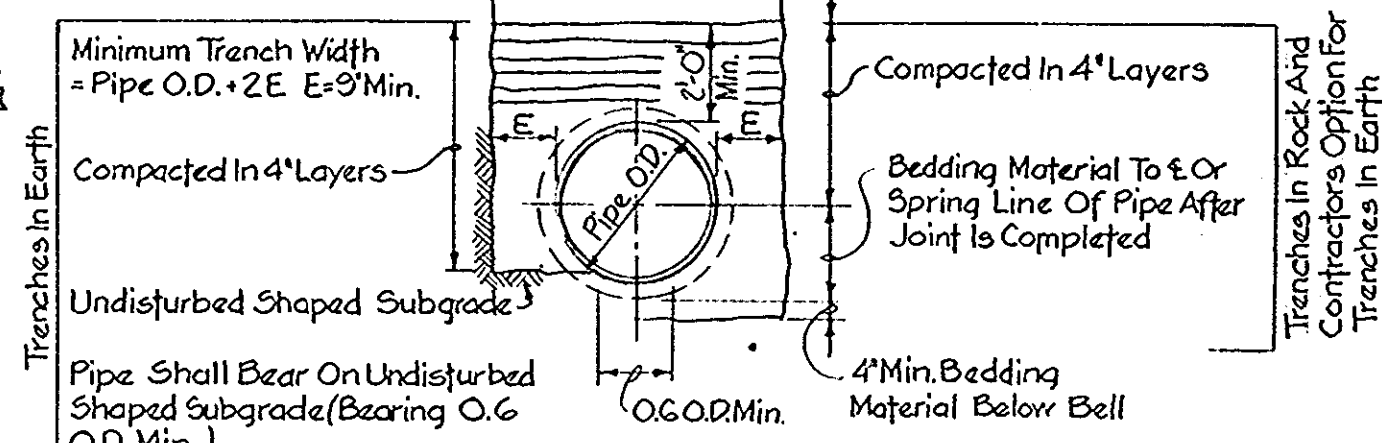
DIRECTOR: *...* DATE: 8-12-81  
CHIEF, BUREAU OF ENGINEERING: *...* DATE: 8/11/81



PROFILE - NEW SOUTH CHANNEL

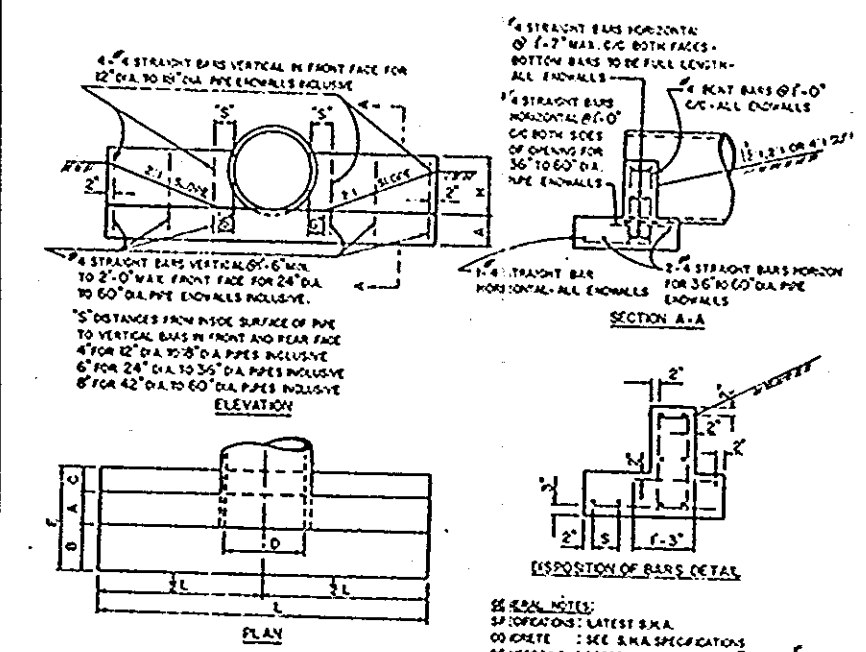
Scales: Horiz. 1"=40' Vert. 1"=5'

APPROVED ZONING ADMINISTRATION HOWARD COUNTY, MARYLAND DATE 7-14-81



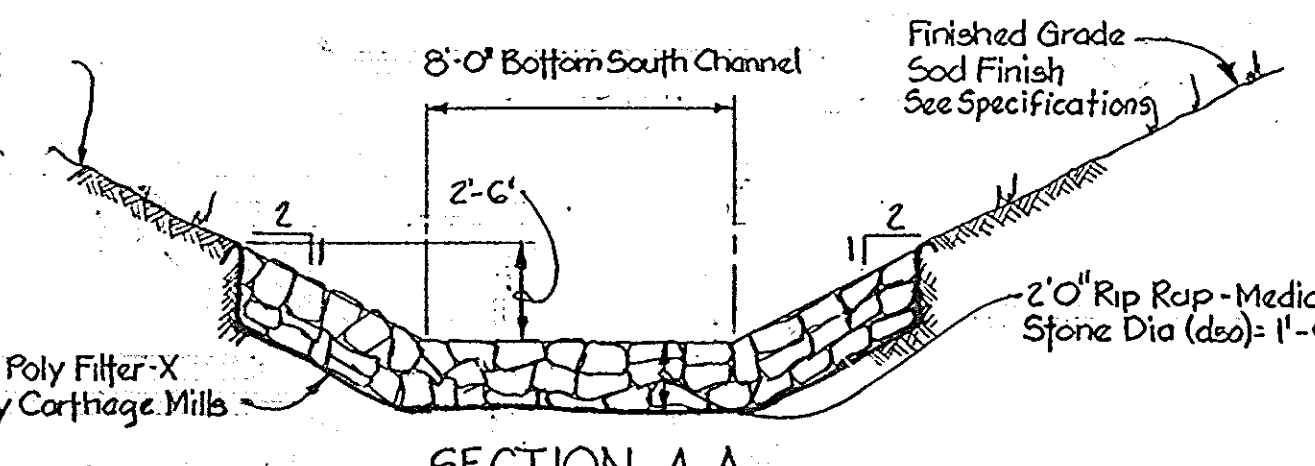
UTILITY TRENCH DETAIL

Note: For Compaction Requirements See Specifications



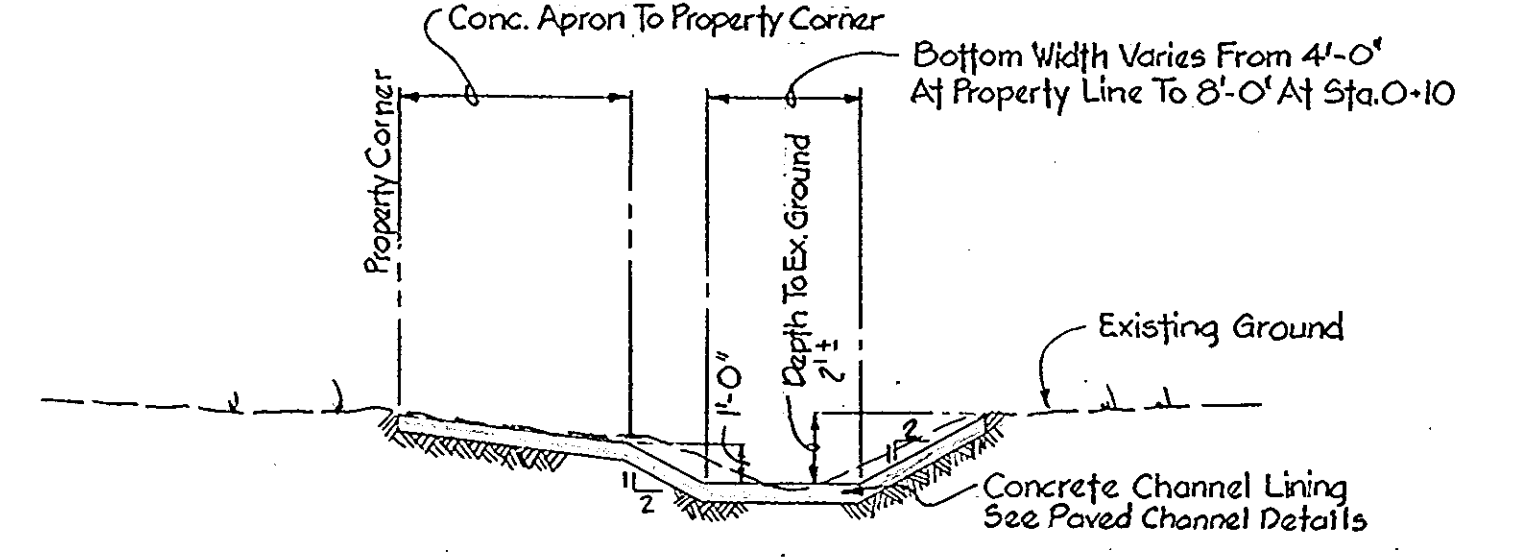
END SUPPORT WALL

No Scale



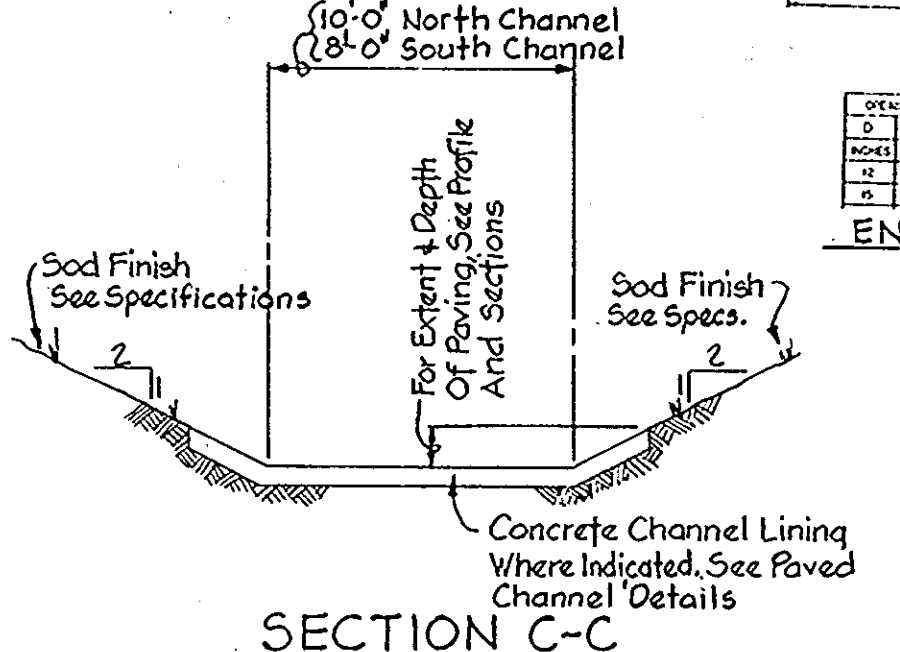
SECTION A-A

No Scale



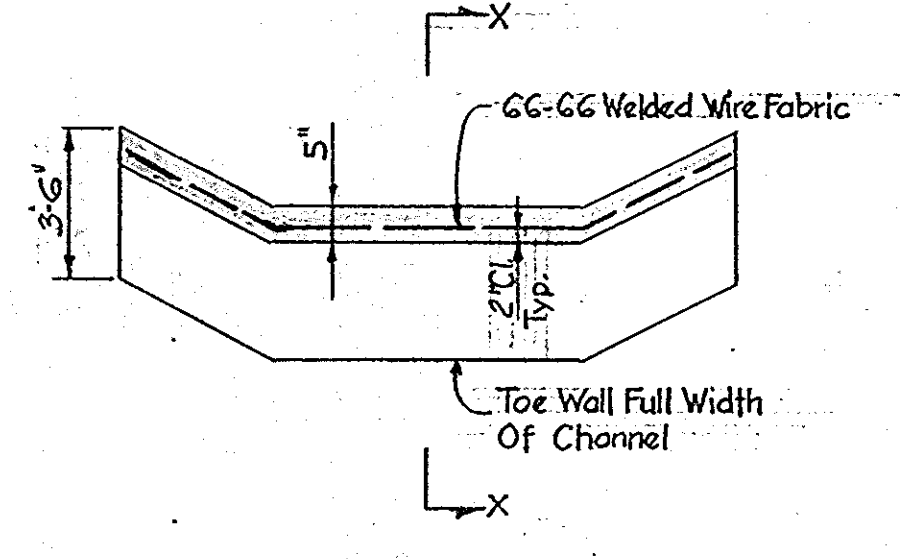
SECTION B-B ALONG R. LOOKING DOWNSTREAM

No Scale



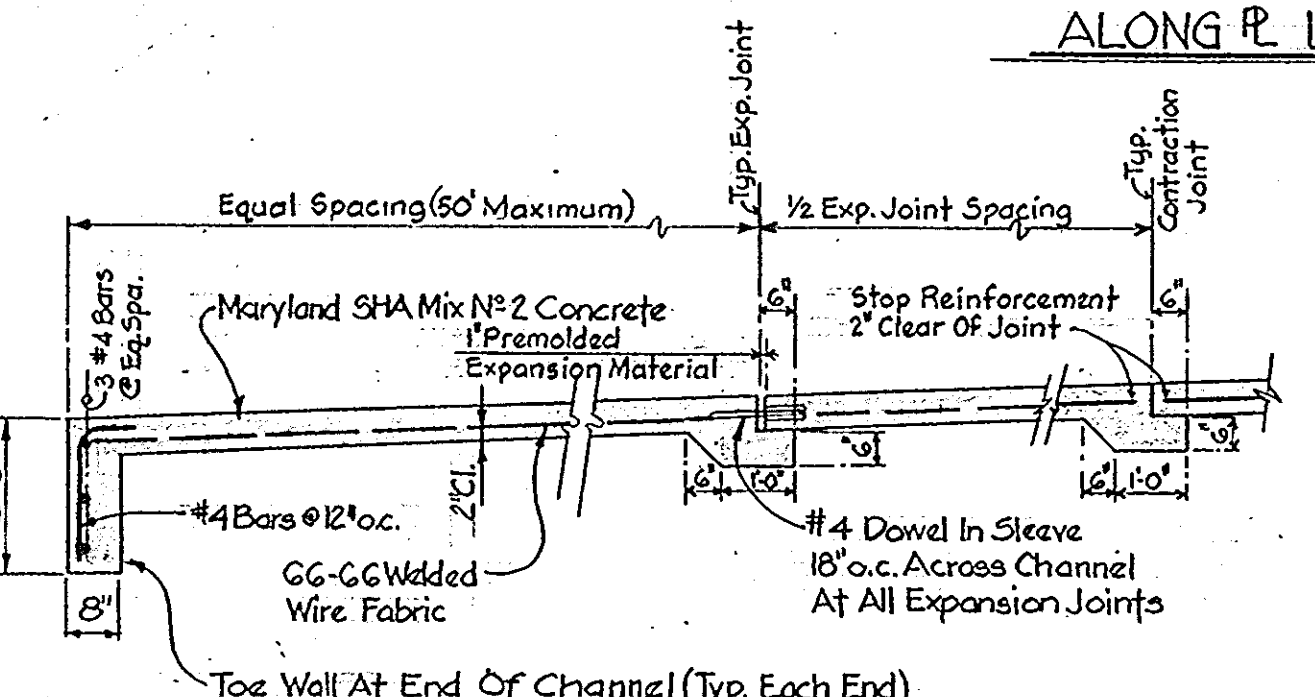
SECTION C-C

No Scale



END ELEVATION

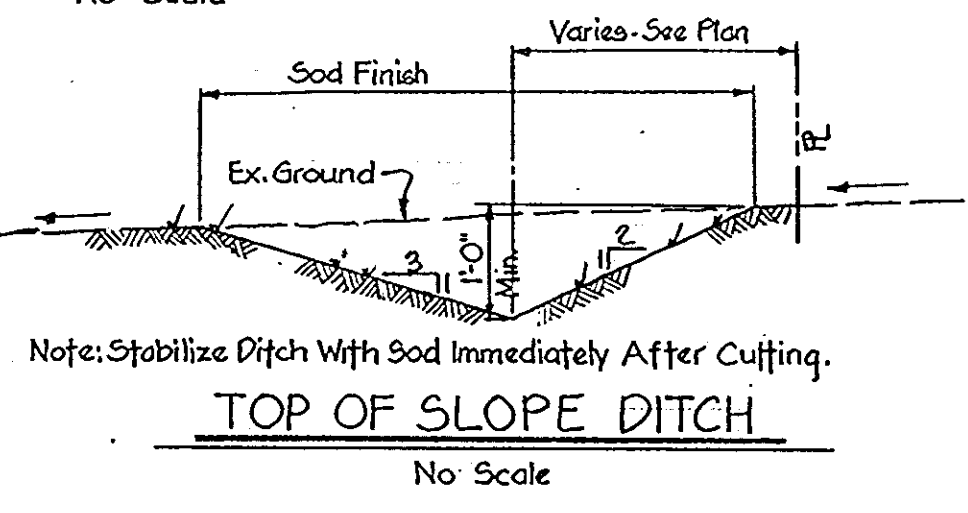
Note: For Typ. Construction Joint Details See Howard Co. Std. Def. SDG.21



SECTION X-X

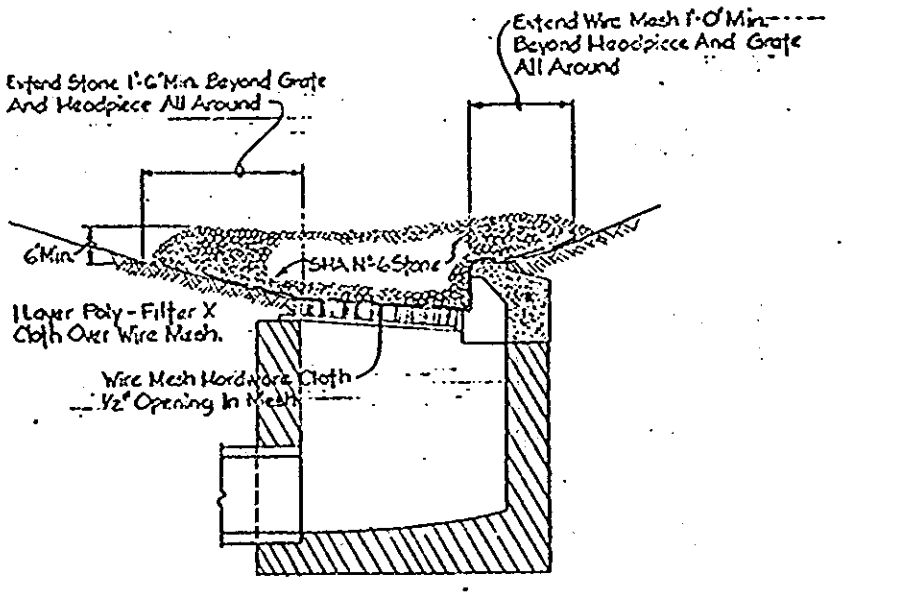
PAVED CHANNEL DETAILS

No Scale



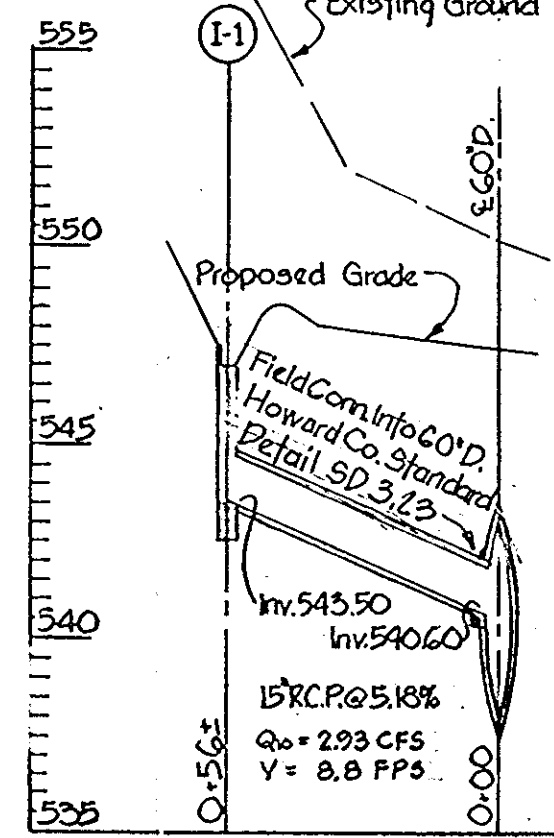
TOP OF SLOPE DITCH

No Scale



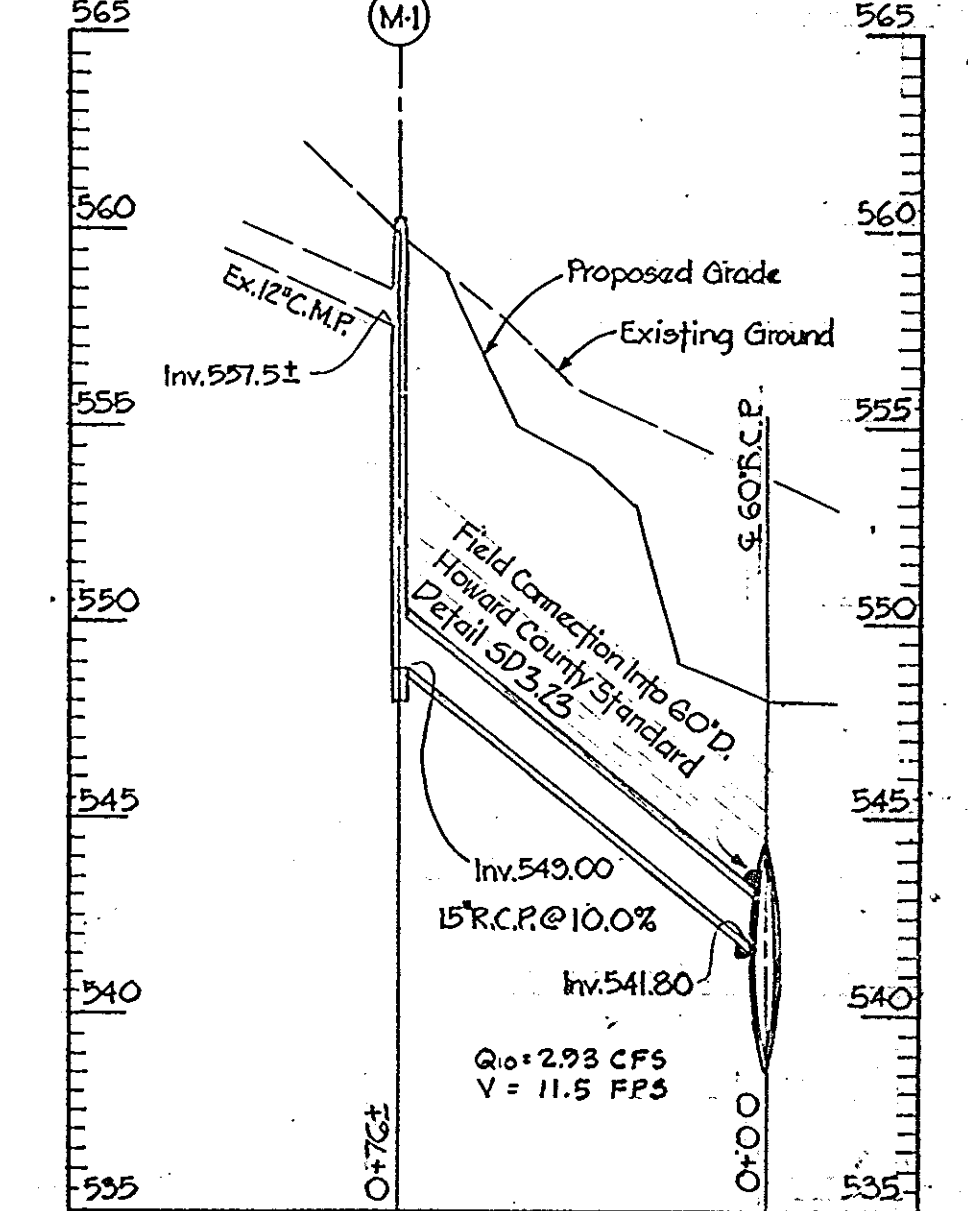
DETAIL - METHOD OF SEALING INLET

No Scale



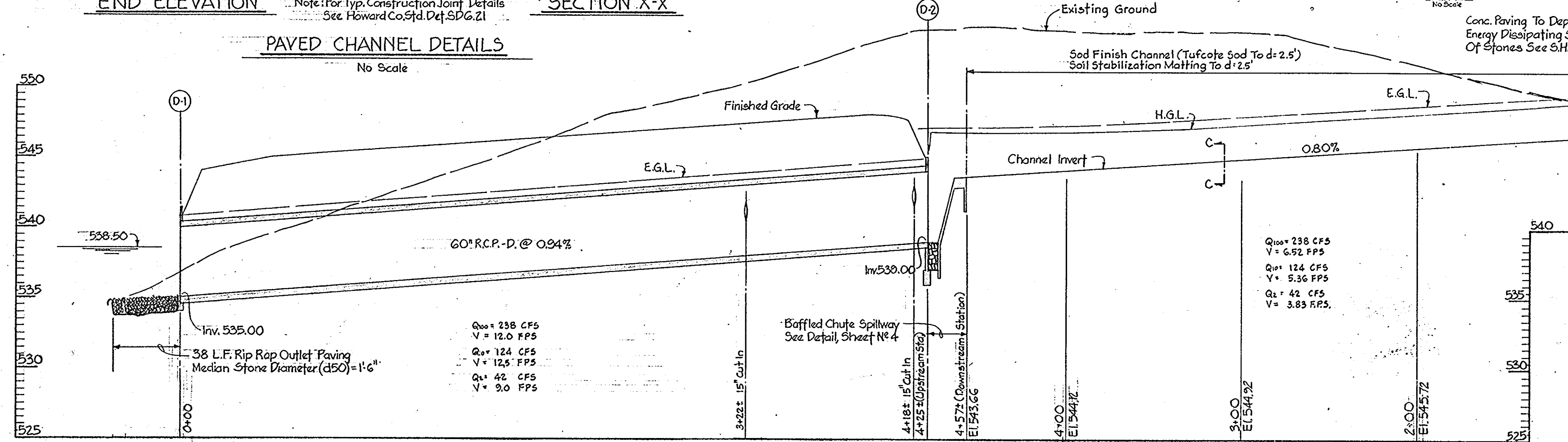
STORM DRAIN PROFILES

Scale: Horiz. 1"=40' Vert. 1"=5'



STORM DRAIN PROFILES

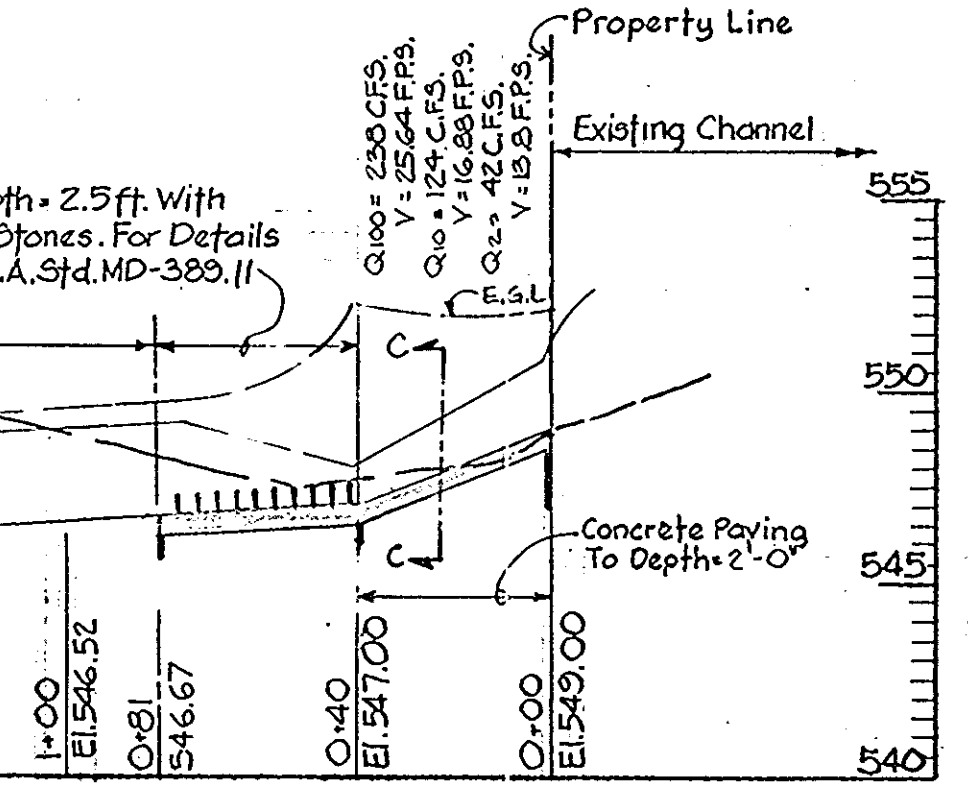
Scale: Horiz. 1"=40' Vert. 1"=5'



PROFILE - NEW NORTH CHANNEL & CONDUIT

Scale: Horiz. 1"=40' Vert. 1"=5'

NOTE: ALL STORM DRAIN PIPE TO BE REINFORCED CONCRETE CULVERT PIPE CLASS III



UNDERDRAIN

No Scale

PARCEL 11 - BOARD OF EDUCATION, HOWARD COUNTY, MARYLAND  
PARCEL 12 - PART OF RAYMOND H. MUSGROVE PROPERTY  
4TH ELECTION DISTRICT, TAX MAP 21, PARCEL 11 and 12, HOWARD COUNTY, MARYLAND  
RECORDED IN PLAT BOOKS 462, 269 and 1015, FOLIO 150, 427 and 484

BOARD OF EDUCATION OF HOWARD COUNTY  
GLENELG SENIOR HIGH SCHOOL  
SITE DEVELOPMENT - PLAYFIELD ADDITIONS

PROFILES AND DETAILS

DAVID GREGORY & ASSOCIATES, INC.  
ENGINEERS / LANDSCAPE ARCHITECTS / PLANNERS  
200 EAST JOPPA ROAD - BALTIMORE, MARYLAND 21204 (301)825-2868

DATE: June 16, 1981  
SCALE: As Shown

SHEET NO. SI-3 OF 4

