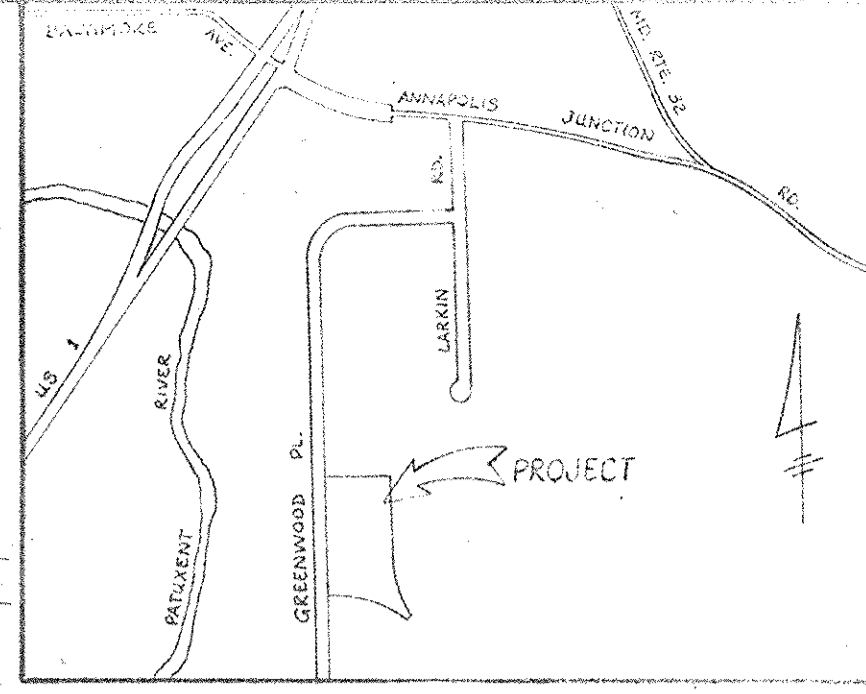


GENERAL NOTES

- Total area of tract 7.428 Ac.±
- Present zoning M-2, Manufacturing heavy
- Parking data
 - Use-Warehouse and Office
 - Number of parking spaces provided 112
 - Total number of employees 108
 - Number of parking spaces required
 - Office space 7 spaces/10 employees = 36 employees @ 0.7 space/employee = 26 spaces
 - Warehouse space 1 space/2 employees = 72 employees @ 0.5 space/employee = 36 spaces
 - TOTAL 62 spaces req.
 - Total number of handicapped spaces required . . . 5
 - Total number of handicapped spaces provided . . . 5
 - Parking spaces to be delineated by solid white 6" painted lines
- All paving and storm drain construction shall be in accordance with the Howard County Road Construction Code and Standard Specifications.
- Existing utilities shown herein have been located from field and office information, the contractor shall determine the exact location of existing utilities to his own satisfaction before making any connection thereto or excavating in the area thereof.
- The contractor shall notify Miss Utility at 559-0100 a minimum of three days prior to beginning any construction shown herein.
- The property is located on Tax Map 47 Parcel 899 and recorded in the Land Records of Howard County in Plat Book 31, Folio 16.
- Coverage
 - Total area of property 7.428 Ac.±
 - Total building coverage 3.20 Ac.± or 43% of site
 - Required open space including landscaped areas @ 20% 1.49 Ac.±
 - Total open space provided 2.35 Ac.± - 31.6%
- The Contractor shall notify the Howard County Construction Inspection/Survey Division 24 hours prior to commencement of work at 992-2418.
- Handicapped facilities to be constructed in accordance with the "Design Of Barrier Free Facilities" and the "Maryland Building Code for the Handicapped and Aged."
- All railroad construction shall be in accordance with the requirements of the Chesapeake System.
- Lighting - No parking lot lighting proposed. Security lighting attached to building, direction and shielded, shown thus -
- The sanitary sewer line and connections shall be of a material as specified under Article 37.06 Section 37.06-2 in Volume 4 Standard Specifications and Details for Construction.
- See drawings S2.11 and S3.21 in Volume 4 for details of the proposed 6" sewer connection and main line clean outs.

BENCH MARK
 F.C.C. #1 ELEV. 100.00
 P.K. NAIL SET IN BITUMINOUS JOINT FILLER ON CONCRETE CURB, EAST SIDE OF GREENWOOD PLACE.



CORRIDOR INDUSTRIAL PARK
 SECTION ONE
 PARCEL "L-1"
 PLAT CMP NO. 1484

OWNER AND DEVELOPER
 C5 INSTITUTIONAL FUND IV
 CAPITAL MANAGEMENT SERVICE
 323 FREMONT AVENUE
 LOS ANGELES, CALIFORNIA 90071

FISHER, COLLINS AND CARTER, INC.
 CONSULTING ENGINEERS
 AND LAND SURVEYORS
 8388 COURT AVENUE
 ELLICOTT CITY, MARYLAND 21043

APPROVED
 HOWARD COUNTY DEPARTMENT OF PLANNING AND ZONING
 Thomas H. Harris, 7-9-81
 Planning Director

APPROVED
 FOR PUBLIC WATER, PUBLIC SEWERAGE AND STORM DRAINAGE SYSTEMS AND ROADS
 HOWARD COUNTY DEPARTMENT OF PUBLIC WORKS
 Jeff F. Nemeyer, 6-30-81
 Director

APPROVED
 FOR PUBLIC WATER AND PUBLIC SEWERAGE SYSTEMS
 HOWARD COUNTY HEALTH DEPARTMENT
 Joe M. Jones, 7-8-81
 Health Officer

APPROVED
 DIVISION OF LAND DEVELOPMENT & ZONING ADMINISTRATION
 HOWARD COUNTY, MARYLAND
 DATE 4-16-81
 SFD

APPROVED
 DIVISION OF LAND DEVELOPMENT & ZONING ADMINISTRATION
 HOWARD COUNTY, MARYLAND
 DATE 4-16-81
 SFD

APPROVED
 DIVISION OF LAND DEVELOPMENT & ZONING ADMINISTRATION
 HOWARD COUNTY, MARYLAND
 DATE 4-16-81
 SFD

APPROVED
 DIVISION OF LAND DEVELOPMENT & ZONING ADMINISTRATION
 HOWARD COUNTY, MARYLAND
 DATE 4-16-81
 SFD

APPROVED
 DIVISION OF LAND DEVELOPMENT & ZONING ADMINISTRATION
 HOWARD COUNTY, MARYLAND
 DATE 4-16-81
 SFD

APPROVED
 DIVISION OF LAND DEVELOPMENT & ZONING ADMINISTRATION
 HOWARD COUNTY, MARYLAND
 DATE 4-16-81
 SFD

APPROVED
 DIVISION OF LAND DEVELOPMENT & ZONING ADMINISTRATION
 HOWARD COUNTY, MARYLAND
 DATE 4-16-81
 SFD

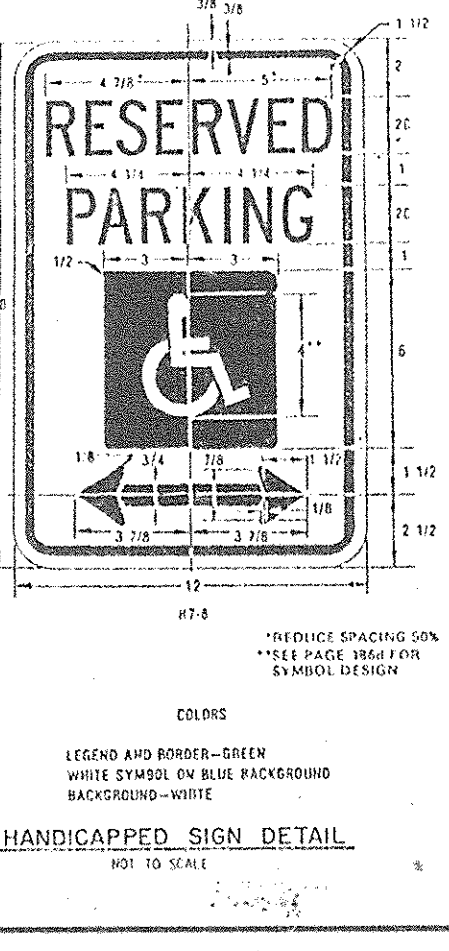
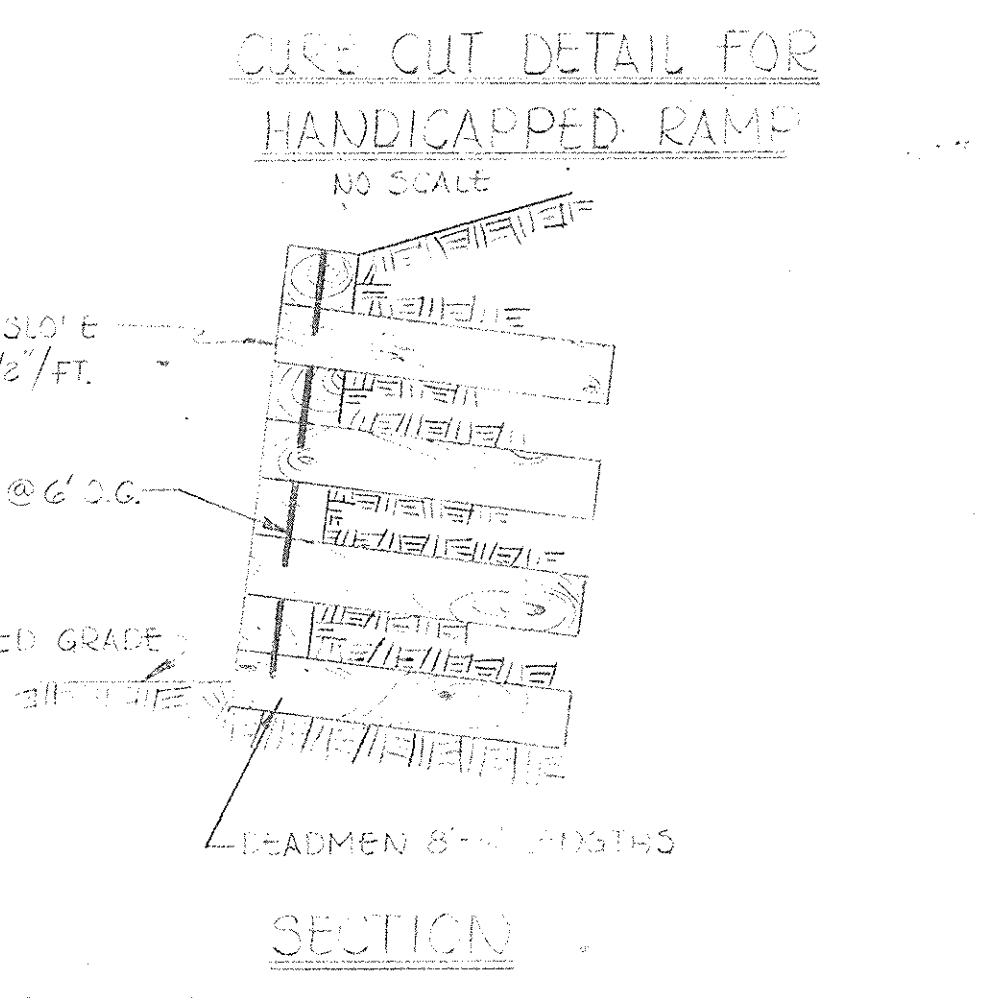
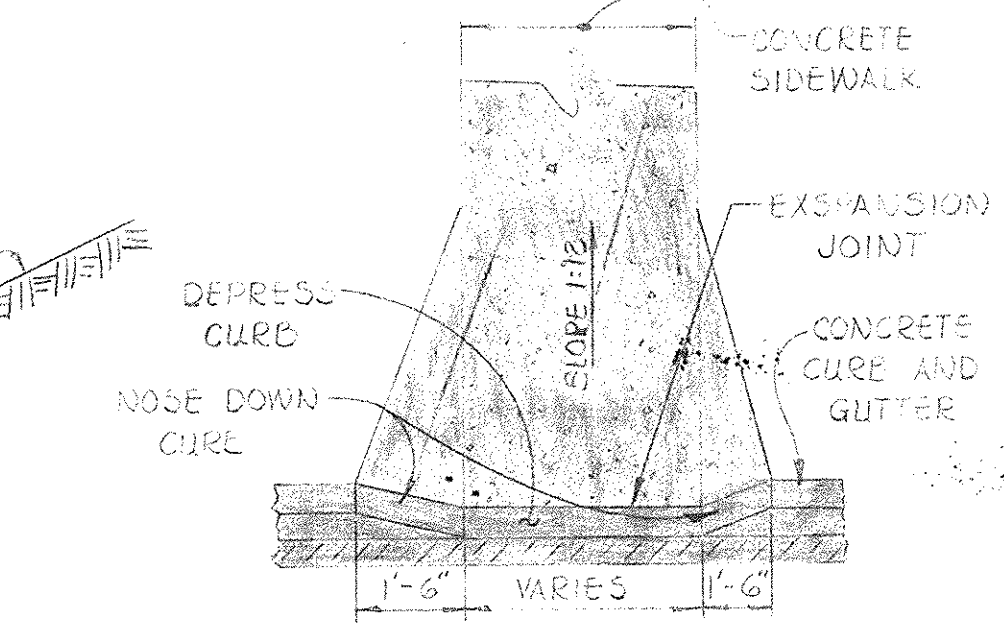
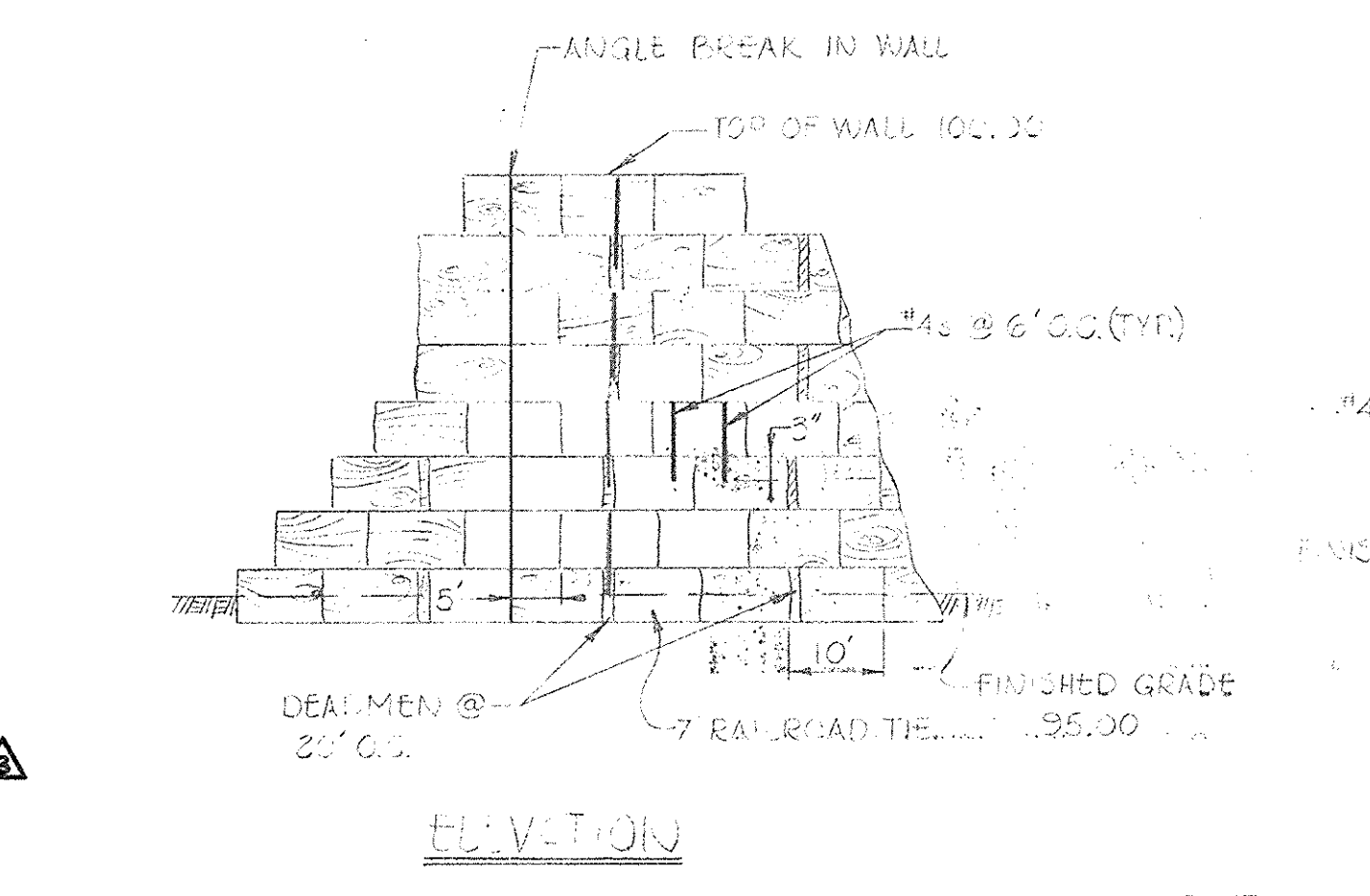
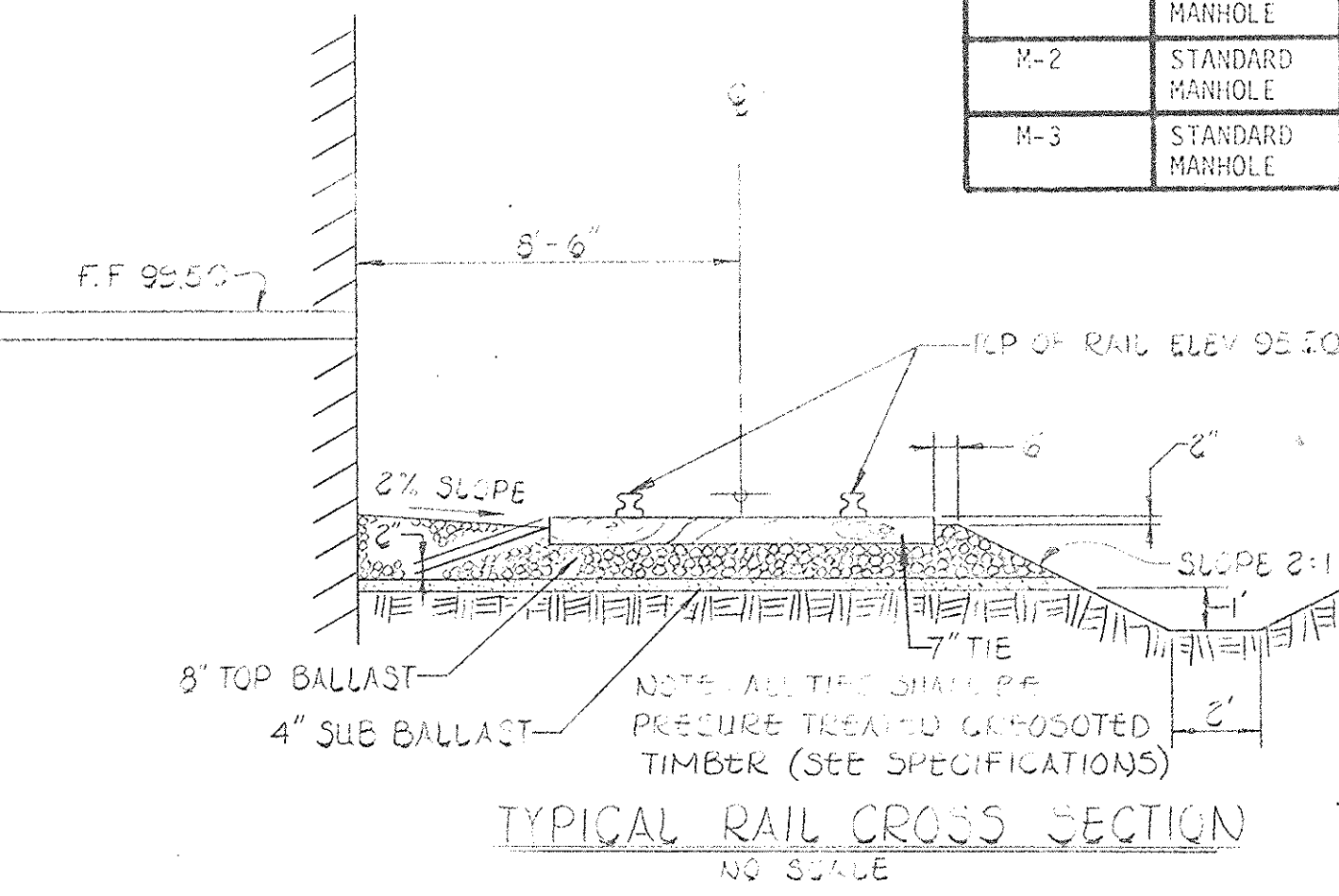
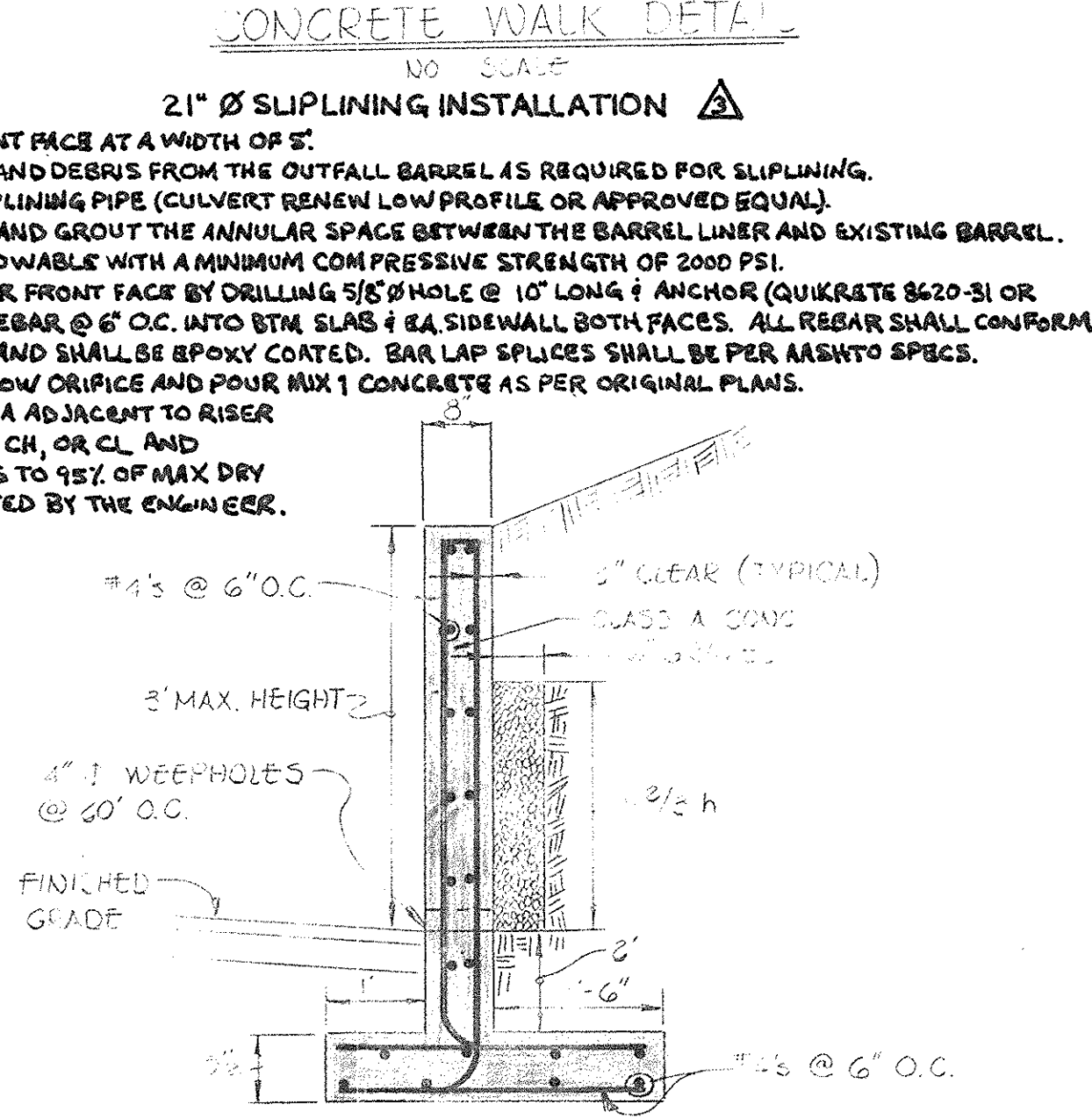
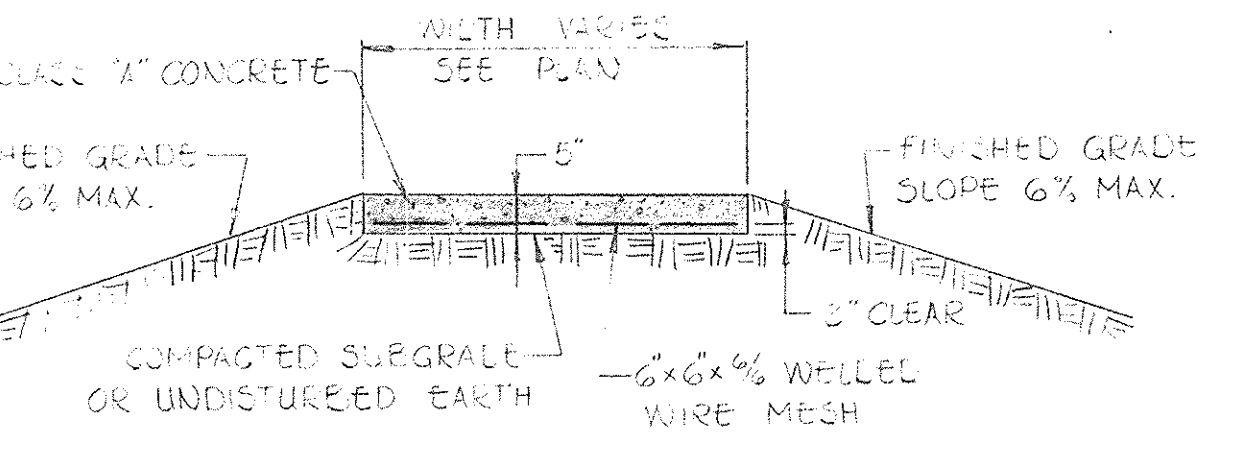
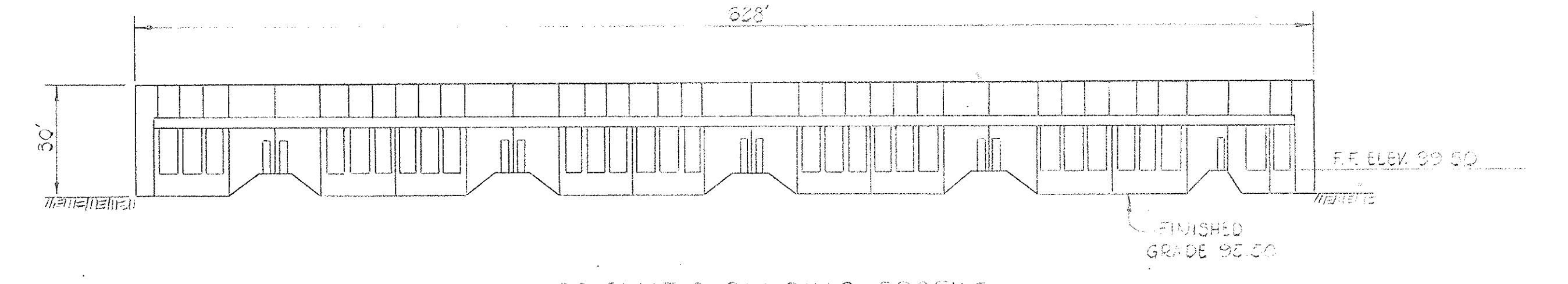
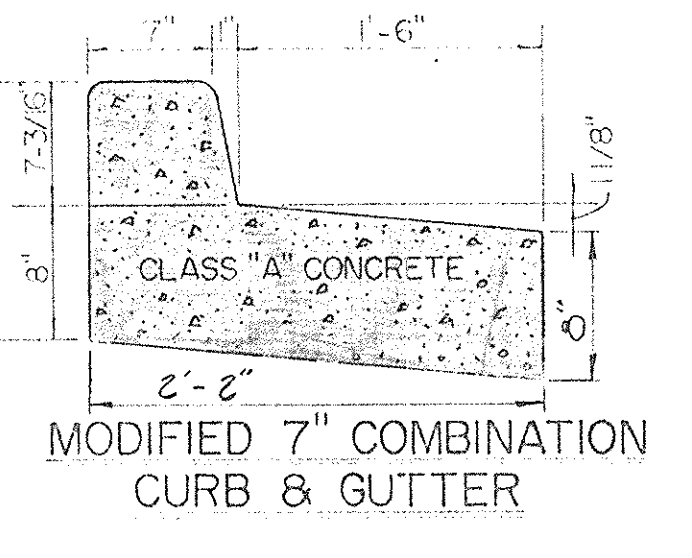
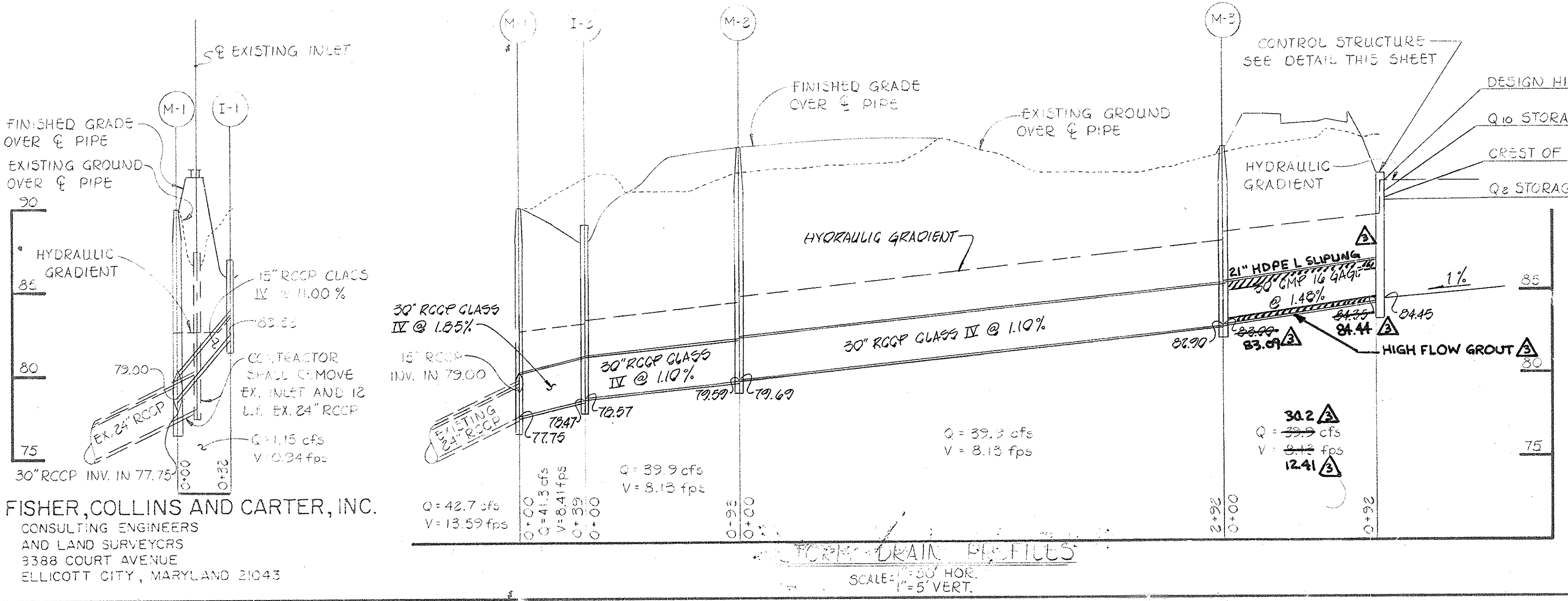
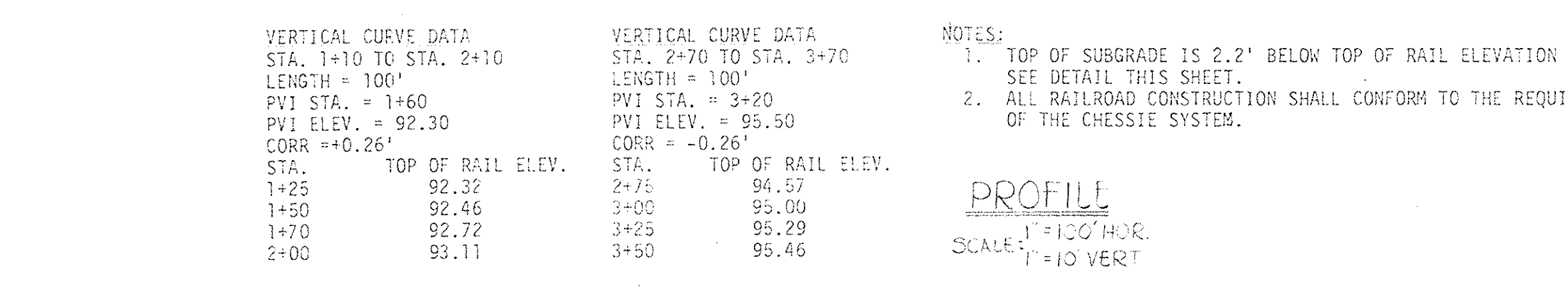
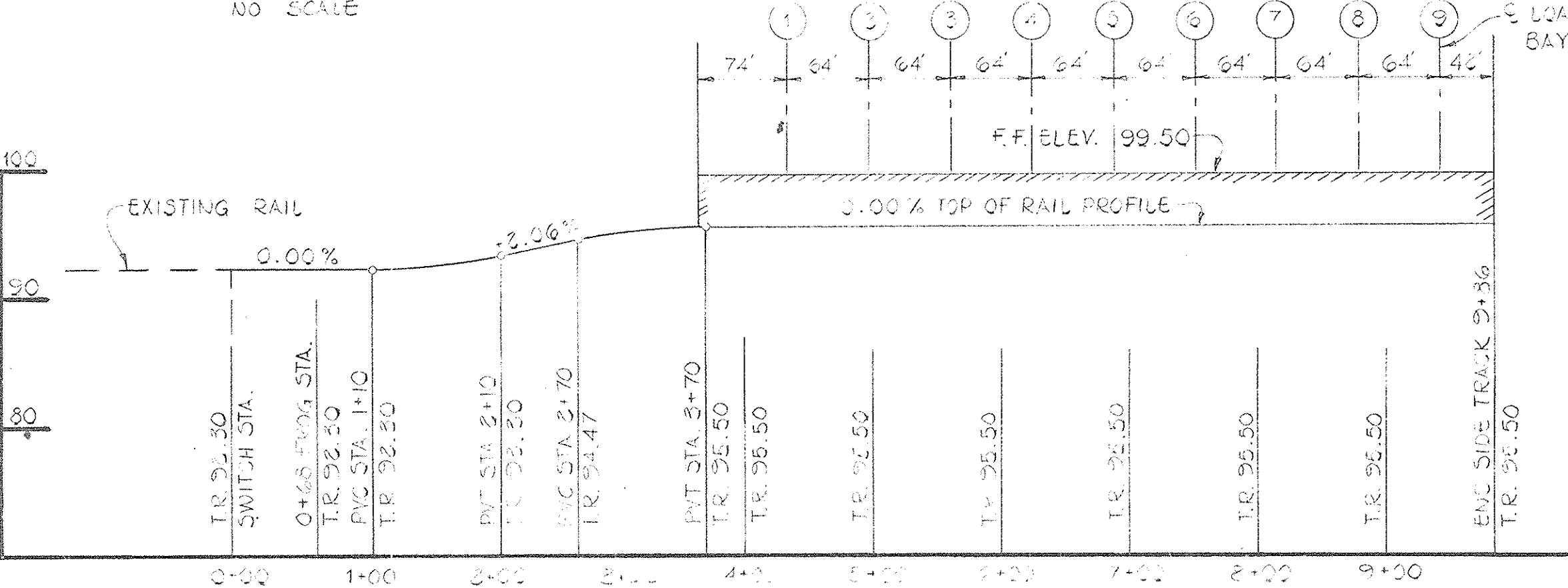
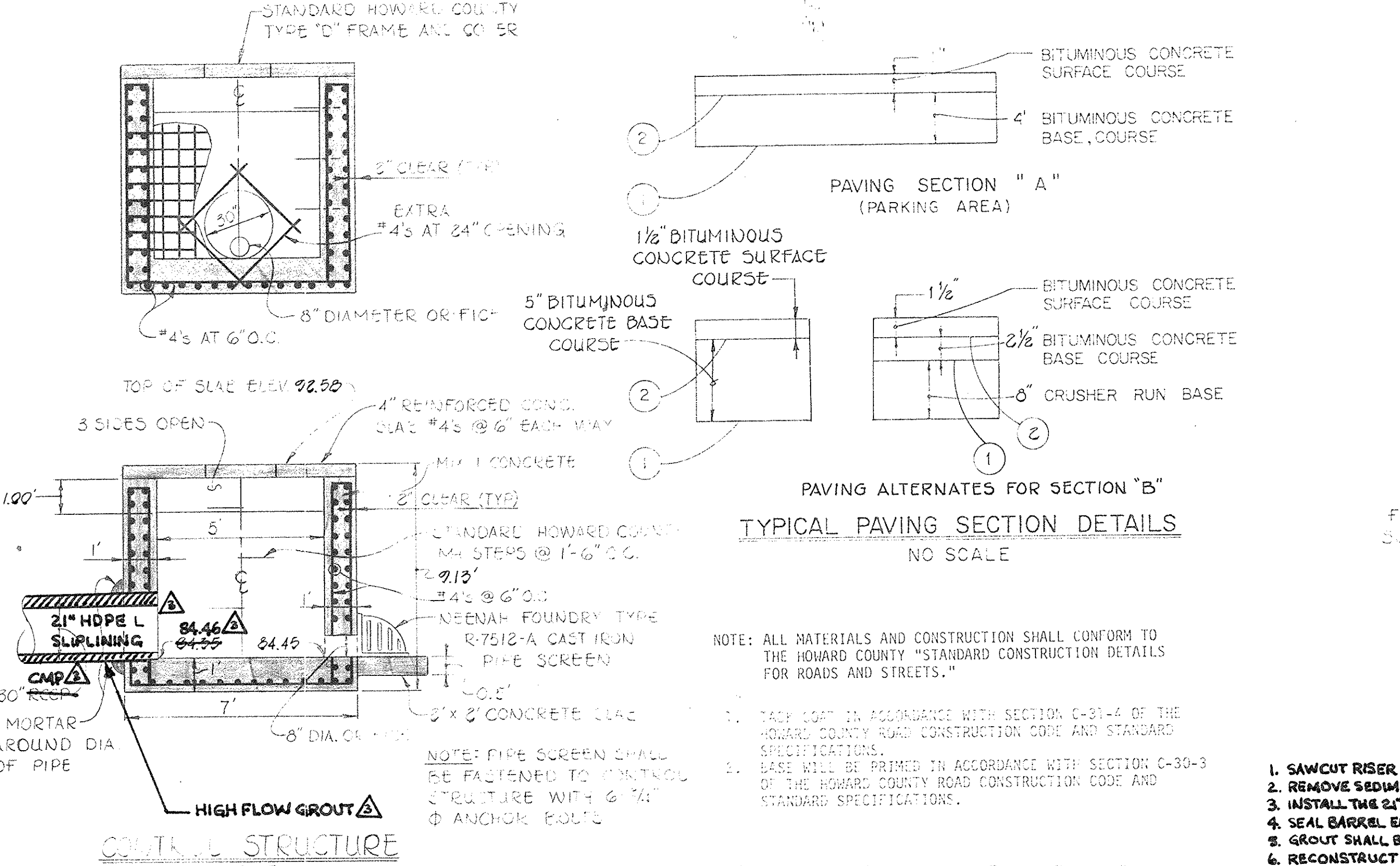
APPROVED
 DIVISION OF LAND DEVELOPMENT & ZONING ADMINISTRATION
 HOWARD COUNTY, MARYLAND
 DATE 4-16-81
 SFD

APPROVED
 DIVISION OF LAND DEVELOPMENT & ZONING ADMINISTRATION
 HOWARD COUNTY, MARYLAND
 DATE 4-16-81
 SFD

APPROVED
HOWARD COUNTY OFFICE OF PLANNING AND ZONING
7-9-81
DATE
DIRECTOR

APPROVED
FOR PUBLIC WATER, PUBLIC SEWERAGE AND STORM DRAINAGE SYSTEMS AND ROADS
HOWARD COUNTY DEPARTMENT OF PUBLIC WORKS
6-30-81
DATE
DIRECTOR

APPROVED
FOR PUBLIC WATER AND PUBLIC SEWERAGE SYSTEMS
HOWARD COUNTY HEALTH DEPARTMENT
7-8-81
DATE



STATE OF MARYLAND
PROFESSIONAL ENGINEER
FOR REV. ONLY
02/01/15

STATE OF MARYLAND
PROFESSIONAL ENGINEER
E. CARL L. COLLINS

APPROVED
DIVISION OF LAND DEVELOPMENT &
ZONING ADMINISTRATION
HOWARD COUNTY, MARYLAND
DATE 4-16-81
LFD.

*STORM DRAIN PROFILE REVISION 12-21-81
A01-06-15 OUTFALL BARREL SLIPLINING

REVISED
PROFILES AND DETAILS
CORRIDOR INDUSTRIAL PARK
SECTION ONE
PARCEL "K"
TAX MAP 47 PARCEL 899
6TH ELECTION DISTRICT HOWARD COUNTY, MARYLAND
MARCH 6, 1981 SHEET 20F3 SCALE AS SHOWN

FISHER, COLLINS AND CARTER, INC.
CONSULTING ENGINEERS
AND LAND SURVEYORS
9388 COURT AVENUE
ELLICOTT CITY, MARYLAND 21043

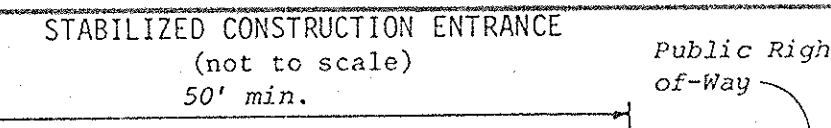
CONSTRUCTION SEQUENCE

- OBTAIN GRADING AND BUILDING PERMIT.
- CONSTRUCT STONE CONSTRUCTION ENTRANCES.
- INSTALL STRAW BALE DIKE ON WEST END OF PROPERTY AS SHOWN ON PLAN.
- CONSTRUCT STORM DRAIN SYSTEM AND STORM INLET SEDIMENT TRAPS.
- CONSTRUCT SEDIMENT BASIN/STORM WATER MANAGEMENT POND AND STABILIZE USING TEMPORARY SEEDING. THE 8" ORIFICE SHALL BE BLOCKED IN ACCORDANCE WITH THE DETAIL OF THIS SHEET. THE 8" ORIFICE SHALL REMAIN BLOCKED UNTIL SUCH TIME WHEN THE SEDIMENT BASIN TRANSITIONS TO FUNCTION AS A STORM WATER MANAGEMENT POND.
- GRADE SITE TO SUBGRADE.
- CONSTRUCT BUILDING.
- LAY CRUSHER RUN, BASE COURSE, AND RAIL SYSTEM.
- DURING CONSTRUCTION, SEDIMENT SHALL BE REMOVED FROM THE TRAPS AND BASIN WHEN THE SEDIMENT REACHES THE CLEANOUT ELEVATION. AFTER EACH RAINFALL THE CONTRACTOR SHALL INSPECT AND PROVIDE NECESSARY MAINTENANCE ON THE SEDIMENT AND EROSION CONTROL STRUCTURES SHOWN HEREON.
- THE BASIN SHALL BE DEMATERED IN ACCORDANCE WITH THE DETAIL ON THIS SHEET. ANY STANDING WATER BELOW THE DEMATERING HOLE SHALL BE PUMPED OUT BEFORE THE TRANSITION TO A PERMANENT POND.
- THE SEDIMENT FROM THE TRAPS AND BASIN SHALL BE PLACED ALONG THE 1/2" FILL SLOPE AT THE WESTERN END OF THE PROPERTY.
- CLEAN BASE COURSE, APPLY TACK COAT TO BASE COURSE, INSTALL CURB AND LAY SURFACE COURSE.
- THE STORM WATER MANAGEMENT POND AND SEDIMENT TRAPS SHALL BE GRADED IN ACCORDANCE WITH SHEET ONE AND STABILIZED IN ACCORDANCE WITH THE PERMANENT SEEDING SPECIFICATIONS IN THE SEDIMENT CONTROL NOTES.
- REMOVE STRAW BALE DIKE.
- ALL DISTURBED AREAS DUE TO REMOVAL OF SEDIMENT CONTROL MEASURES SHALL BE GRADED AND STABILIZED BY PERMANENT SEEDING.

SEDIMENT CONTROL NOTES

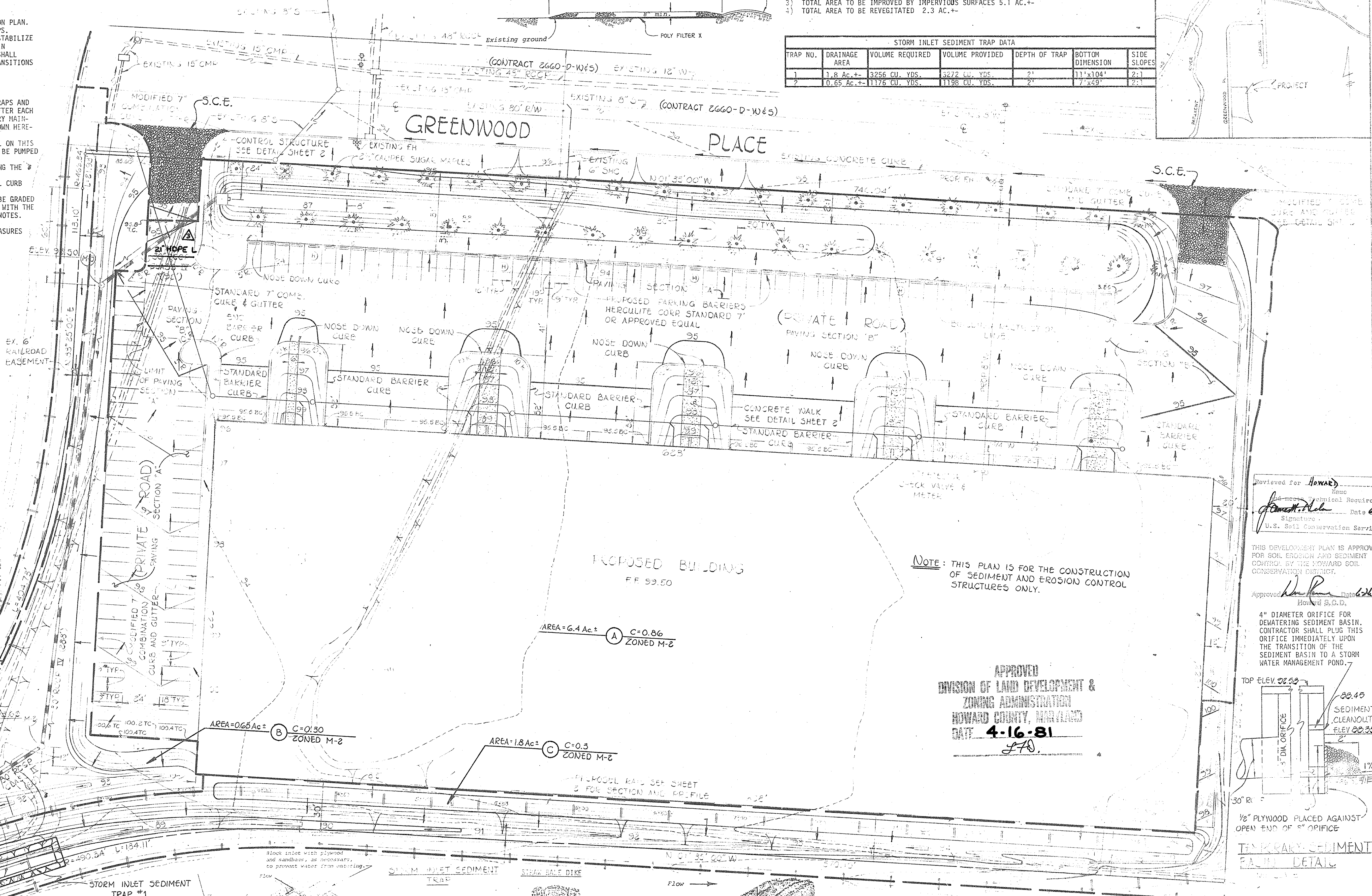
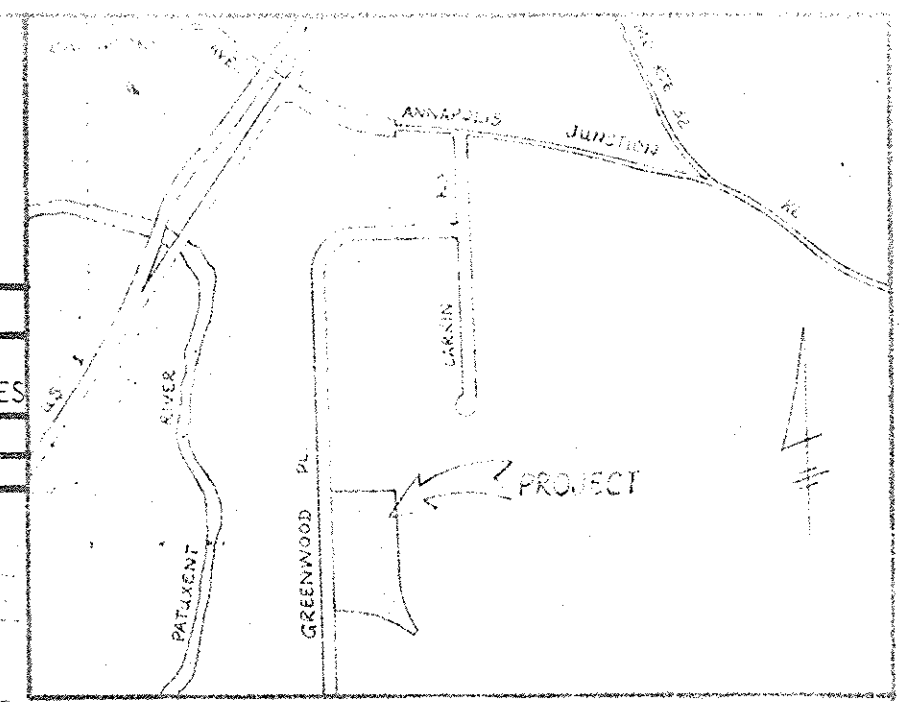
- Specifications for the Sediment Control Details shown hereon are included in the U.S.D.A. Soil Conservation Service "Standards and Specifications for Soil Erosion and Sediment Control in Developing Areas."
- The developer shall notify the Howard County Office of Inspection and Permits at least 24 hours prior to beginning any construction shown hereon (992-2433).
- Sediment control structures to be constructed prior to any on-site grading or disturbance to any existing surface material, and are to be stabilized as soon as constructed.
- All sediment control structures to remain in place until permission for their removal has been obtained from the Howard County Office of Inspection and Permits. (992-2433).
- All graded areas not to be sodded shall be stabilized by seeding and mulching in accordance with the following:
 - Site Preparation
 - Harrow or disc in areas proposed to be seeded the following materials:
 - Pulverized limestone at 2 tons/acre.
 - Commercial fertilizer 10-10-10 at 3/4 tons/acre.
 - Super phosphate at 600 lbs./acre.
 - Seeding
 - Sow the following seed mixture at the rate of 200 lbs./acre with a mechanical spreader:
 - Temporary: Italian or Perennial Rye Grass
 - Permanent: 40% Marion Blue Grass, 40% South Dakota Blue Grass and 20% Penn Lawn Creeping Fescue.
 - The seeded area shall then be raked with a York Rake (a minimum of 2 passes) covered and compacted with Cultipacker or other approved method.
 - Mulching
 - Seeded areas shall be uniformly mulched immediately after seeding with unweathered small grain straw at the rate of 1 1/2-2 tons/acre.
 - The mulch down with liquid asphalt at 0.1 gal./s.y. or emulsified asphalt at 0.04 gal./s.y. or mulch netting.

STRAW BALE DIKE TO BE INSTALLED ALONG TOE OF SLOPE SEE DETAIL THIS SHEET



- SITE ANALYSIS**
- TOTAL AREA OF SITE 7.4 AC.±
 - TOTAL AREA TO BE DISTURBED 7.4 AC.±
 - TOTAL AREA TO BE IMPROVED BY IMPERVIOUS SURFACES 5.1 AC.±
 - TOTAL AREA TO BE REVEGETATED 2.3 AC.±

STORM INLET SEDIMENT TRAP DATA					
TRAP NO.	DRAINAGE AREA	VOLUME REQUIRED	VOLUME PROVIDED	DEPTH OF TRAP	BOTTOM DIMENSION
1	1.8 AC.±	3256 CU. YDS.	3272 CU. YDS.	2'	11'x10'
2	0.65 AC.±	1176 CU. YDS.	1198 CU. YDS.	2'	7'x9'



NOTE: THIS PLAN IS FOR THE CONSTRUCTION OF SEDIMENT AND EROSION CONTROL STRUCTURES ONLY.

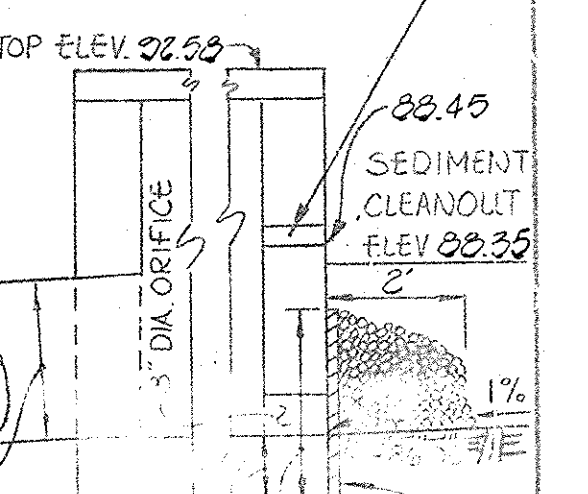
APPROVED
DIVISION OF LAND DEVELOPMENT & ZONING ADMINISTRATION
HOWARD COUNTY, MARYLAND
DATE 4-16-81
LFD.

Reviewed for Howard County
Signature: [Signature]
Date: 4/16/81
U.S. Soil Conservation Service

THIS DEVELOPMENT PLAN IS APPROVED FOR SOIL EROSION AND SEDIMENT CONTROL BY THE HOWARD SOIL CONSERVATION DISTRICT.

Approved: [Signature]
Date: 4/16/81
Howard S.D.

4" DIAMETER ORIFICE FOR DEMATERING SEDIMENT BASIN. CONTRACTOR SHALL PLUG THIS ORIFICE IMMEDIATELY UPON THE TRANSITION OF THE SEDIMENT BASIN TO A STORM WATER MANAGEMENT POND.



1/2" PLYWOOD PLACED AGAINST OPEN END OF 4" ORIFICE

TEMPORARY SEDIMENT FACILITY DETAIL

ELEVATION REVISIONS ON SEDIMENT CONTROL DETAIL. 12-01-81
01-06-15 OUTFALL BARREL SUPPLING

REVISED
DRAINAGE AREA MAP AND
SEDIMENT CONTROL PLAN
CORRIDOR INDUSTRIAL PARK
SECTION ONE
PARCEL "K"
TAX MAP 47 PARCEL 899
6TH ELECTION DISTRICT HOWARD COUNTY, MARYLAND
MARCH 6, 1981 SHEET 3 OF 3 SCALE: 1" = 30'

FISHER, COLLINS AND CARTER, INC.
CONSULTING ENGINEERS
AND LAND SURVEYORS
8388 COURT AVENUE
ELLICOTT CITY, MARYLAND 21043

FOR REVIEW ONLY
[Seal]

APPROVED: HOWARD COUNTY OFFICE OF PLANNING AND ZONING
[Signature] 7-9-81
[Signature] 7-9-81

APPROVED: FOR PUBLIC WATER, PUBLIC SEWERAGE AND STORM DRAINAGE SYSTEMS AND ROADS.
HOWARD COUNTY DEPARTMENT OF PUBLIC WORKS
[Signature] 6-30-81
[Signature] 6-30-81

APPROVED: FOR PUBLIC WATER AND PUBLIC SEWERAGE SYSTEMS.
HOWARD COUNTY HEALTH DEPARTMENT.
[Signature] 7-8-81

ENGINEER'S CERTIFICATE
I CERTIFY THAT ALL DEVELOPMENT AND CONSTRUCTION WILL BE DONE ACCORDING TO THIS PLAN OF DEVELOPMENT AND PLAN FOR EROSION AND SEDIMENT CONTROL AND THAT ALL RESPONSIBLE PERSONNEL INVOLVED IN THE CONSTRUCTION PROJECT WILL HAVE A CERTIFICATE OF ATTENDANCE AT A DEPARTMENT OF NATURAL RESOURCES APPROVED TRAINING PROGRAM FOR THE CONTROL OF SEDIMENT AND EROSION BEFORE BEGINNING THE PROJECT. I ALSO AUTHORIZE PERIODIC ON-SITE INSPECTION BY THE HOWARD SOIL CONSERVATION DISTRICT OR THEIR AUTHORIZED AGENTS, AS ARE DEEMED NECESSARY.
[Signature] 3/16/81

DEVELOPER'S CERTIFICATE
[Signature] 3/16/81