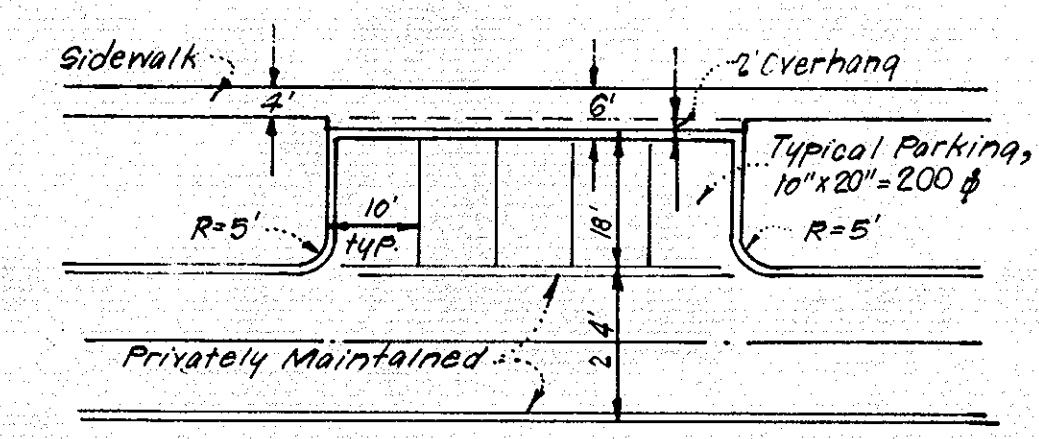
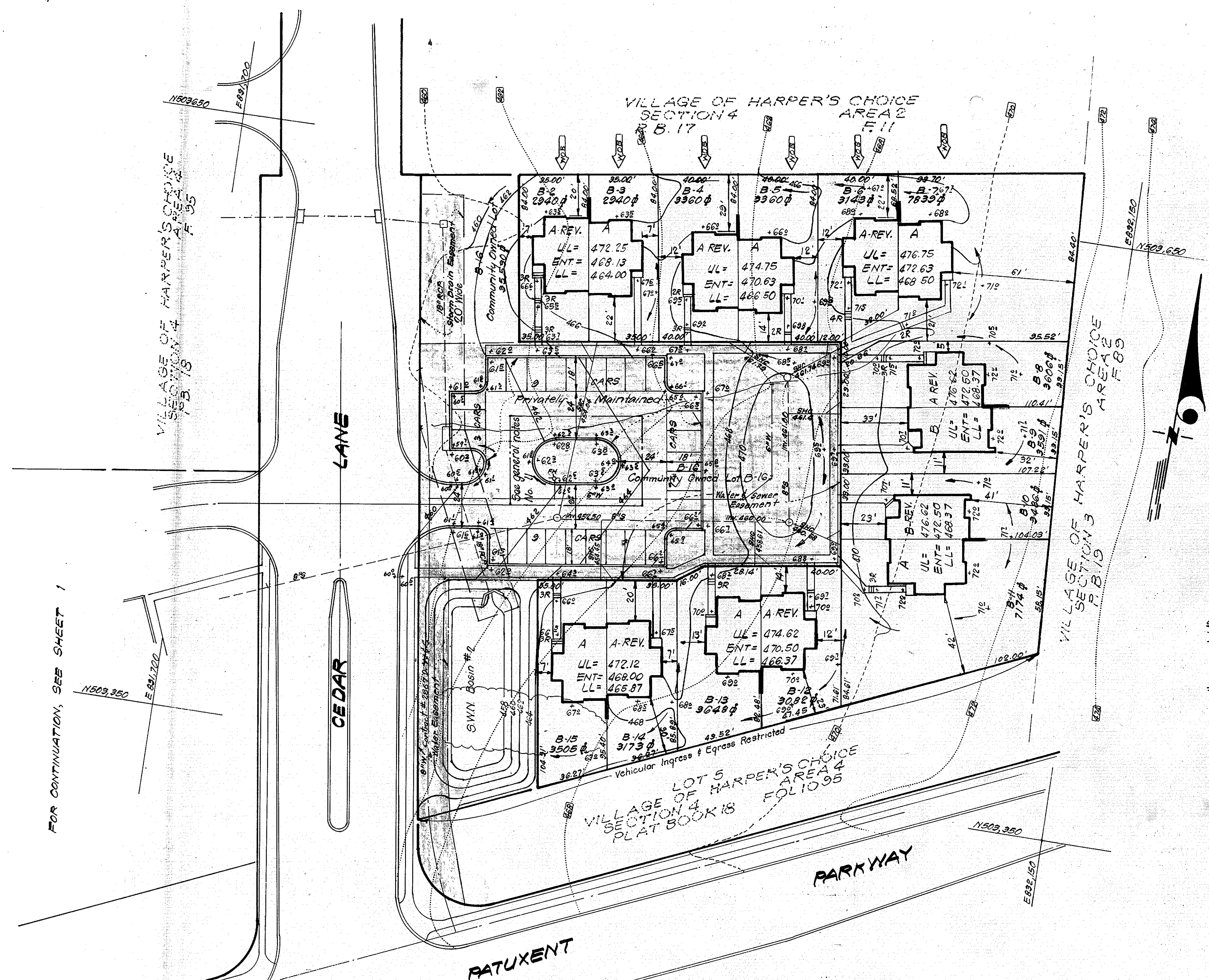
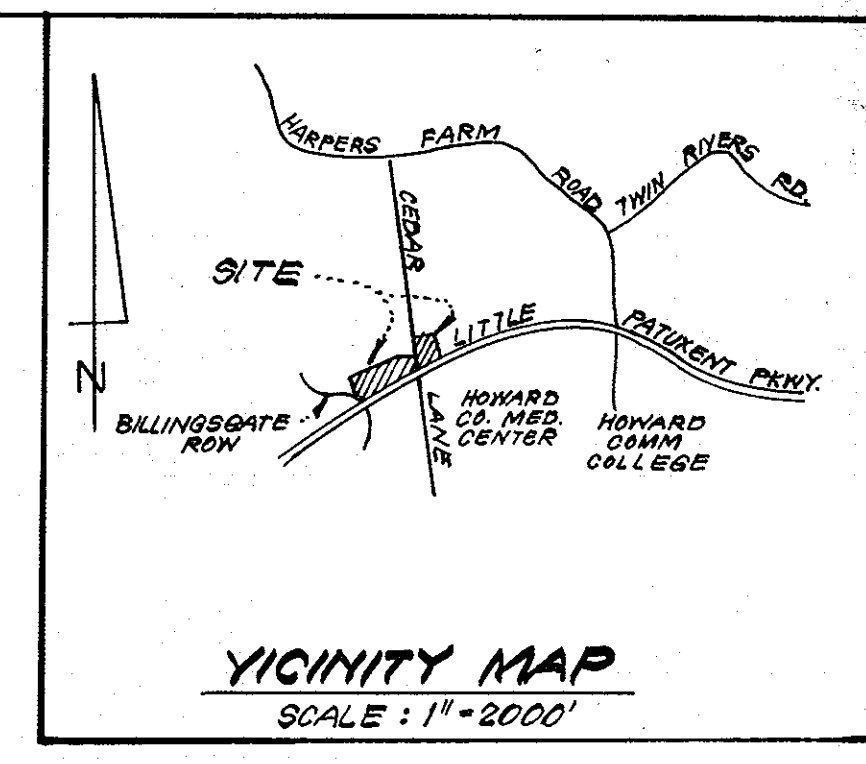


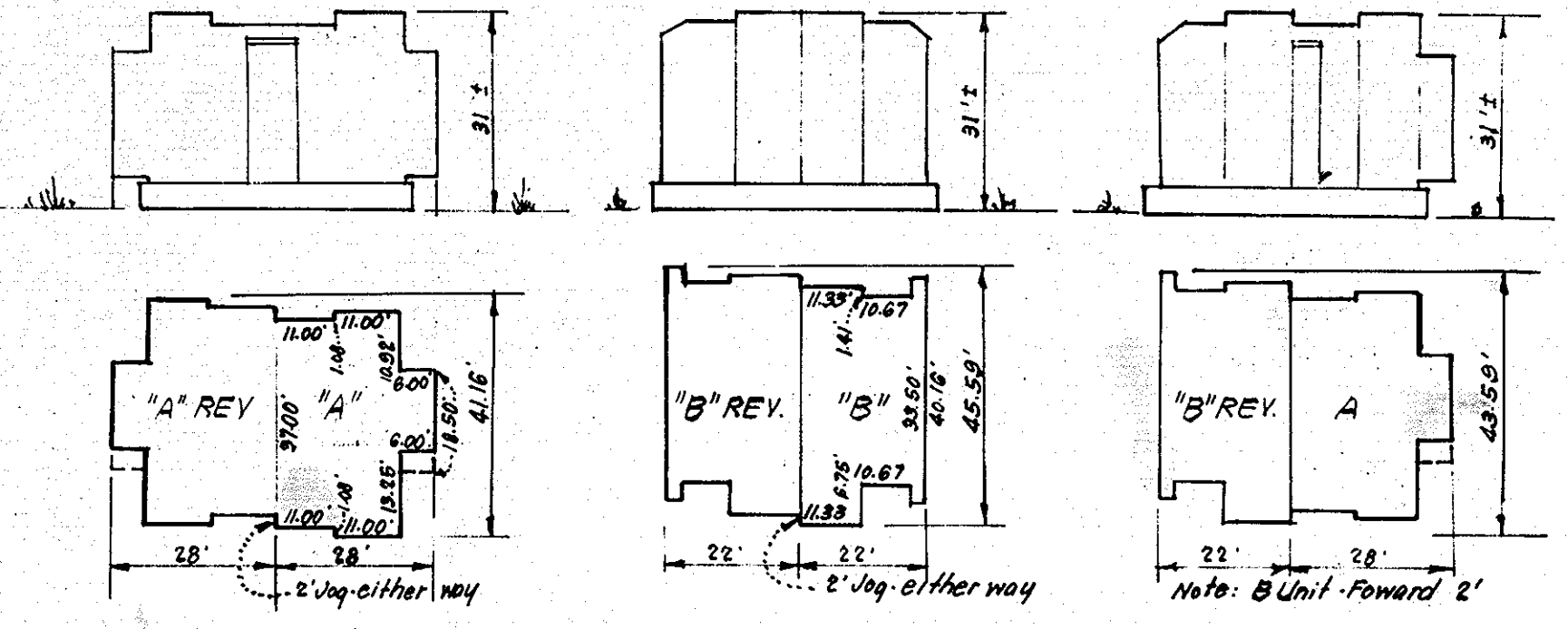
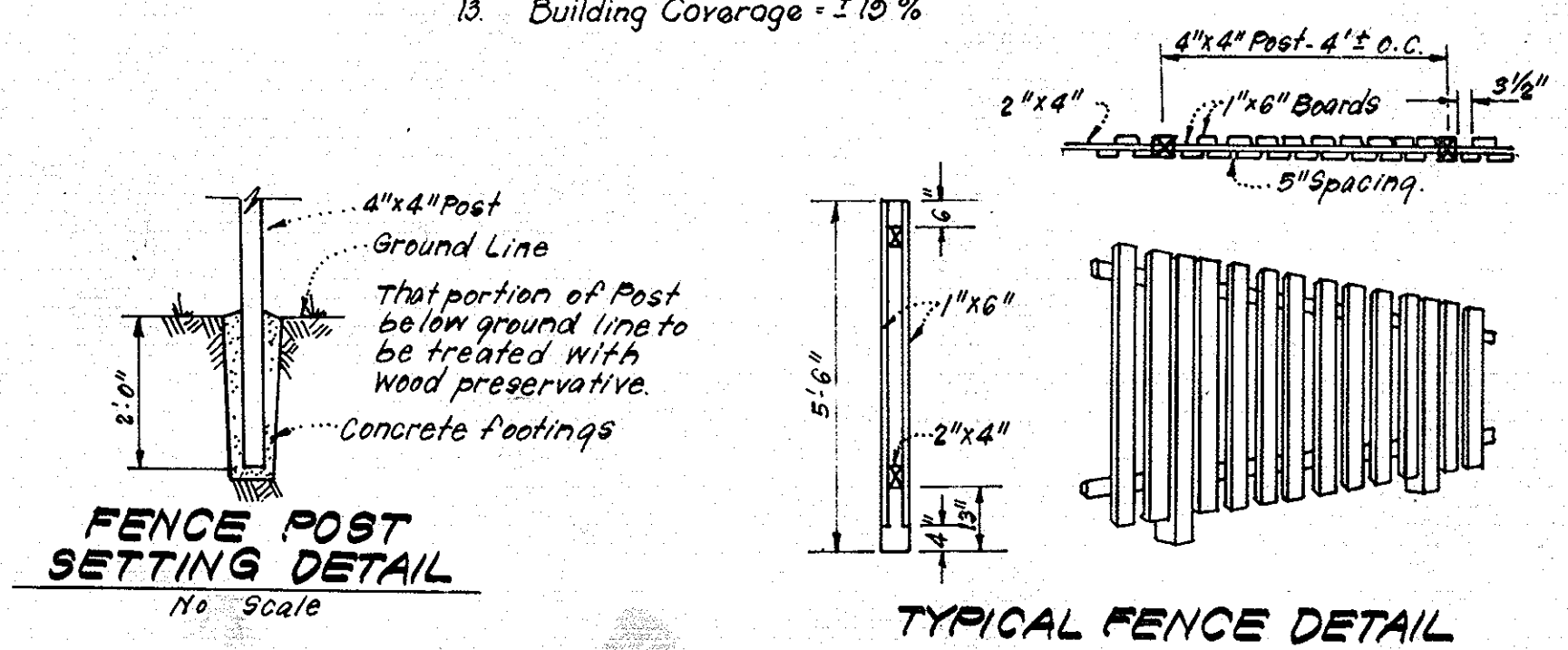
No.	REVISION	Date
1	Rev. House Configuration & Grading - All Lots	9-23-80

**LEGEND**

1. Contour Interval	2 Ft.
2. Existing Contour	---
3. Proposed Contour	---
4. Spot Elevation	+605
5. Direction of Drainage	→
6. Walk-Out Basement	▭
7. Fence	—



- GENERAL NOTES**
- The Land included in this plan is zoned: New Town (Attached).
  - The Lots shown on this plan are covered by Final Development Plan Phase 119-A recorded in P.B. 28 Folios 26-28.
  - All coordinates are based on traverse controls for Columbia established by Maps, Inc., in 1965 by Purdum & Veselka in 1968 which controls were tied to Maryland Bureau of Control Survey monuments and to U.S. Coast and Geodetic Survey monuments in the Columbia area.
  - The area covered in this submission is located on Tax Map # 35.
  - The total area included in this plan is 5.880 Acres.
  - All road ways are public & existing, unless otherwise noted.
  - Any damage to county owned rights of way or paving shall be corrected at the developer's expense.
  - Number of Units shown: 44
  - Number of Parking Spaces: 88
  - Sediment and Erosion Control for this site is approved under Final Road Construction Drawings (F-80-29-C).
  - Curb, Gutter, Paving and Storm Drainage are being Constructed by Others, See Final Road Construction Drawings (F-80-29-C).
  - Vehicular Ingress & Egress to Cedar Lane and Billingsgate Row shall be at points by O.P. & Z. only.
  - Building Coverage = 3.0 %



APPROVED  
PLANNING BOARD  
OF HOWARD COUNTY  
DATE 3-12-80

APPROVED FOR PUBLIC WATER AND PUBLIC SEWERAGE SYSTEMS, HOWARD COUNTY HEALTH DEPARTMENT  
COUNTY HEALTH OFFICER [Signature] DATE 4-28-80

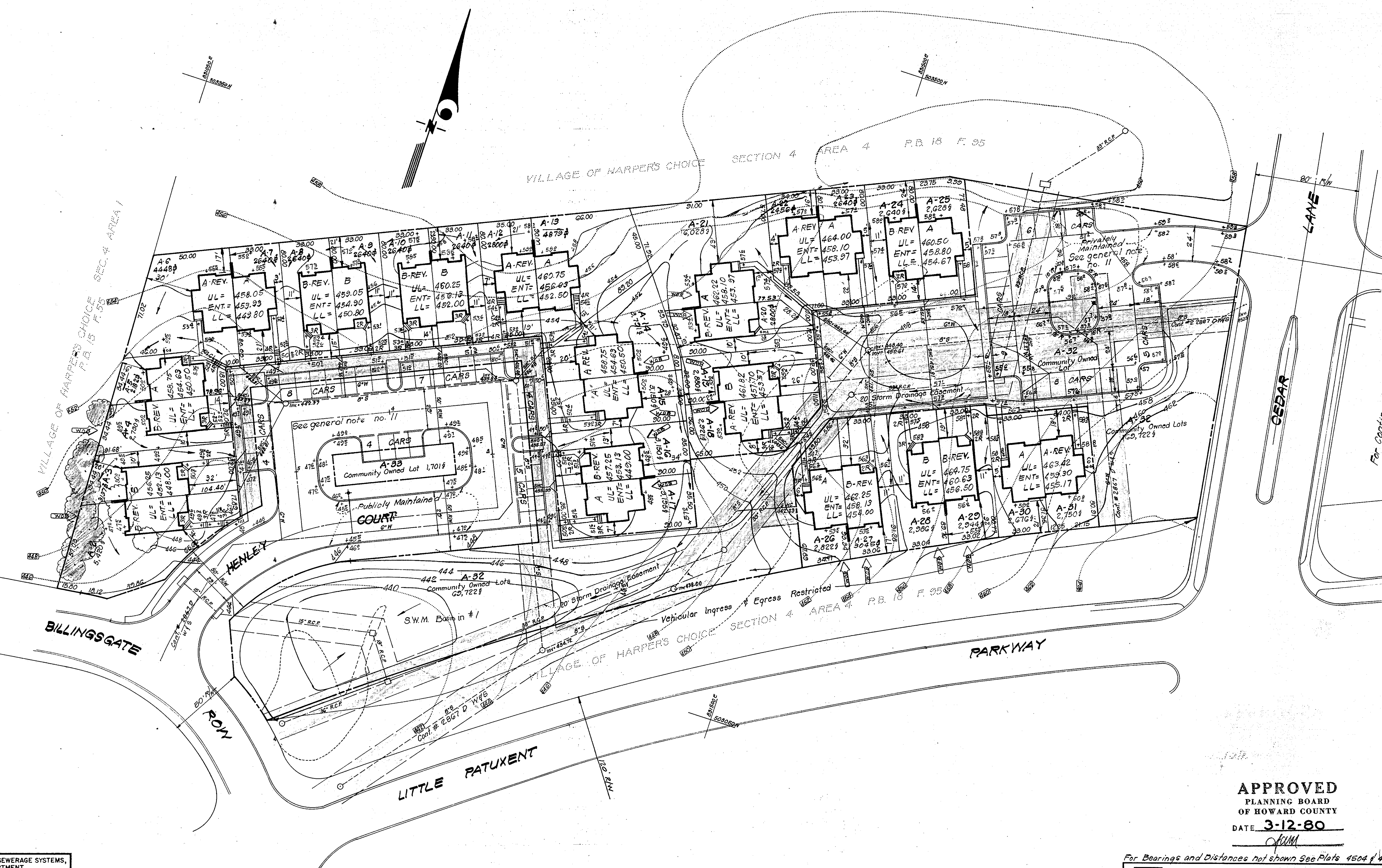
APPROVED HOWARD COUNTY OFFICE OF PLANNING & ZONING  
PLANNING DIRECTOR [Signature] DATE 4-29-80

APPROVED FOR PUBLIC WATER AND PUBLIC SEWERAGE, STORM DRAINAGE SYSTEMS AND PUBLIC ROADS, HOWARD COUNTY DEPARTMENT OF PUBLIC WORKS  
DIRECTOR [Signature] DATE 4-22-80

CHIEF BUREAU OF ENGINEERING [Signature] DATE

For Bearings & Distances not shown See Plats 4504 & 4505.

<b>CLARK • FINEFROCK &amp; SACKETT</b> ENGINEERS • PLANNERS • SURVEYORS		11315 LOCKWOOD DRIVE SILVER SPRING, MARYLAND 20904 (301) 593-3400
DESIGNED	J.M.E.	SITE DEVELOPMENT PLAN
DRAWN	J.M.E.	LOTS A-2 THRU A-33 & LOTS B-2 THRU B-10
CHECKED	J.M.E.	<b>COLUMBIA</b>
DATE	Jan, 1980	VILLAGE OF HARPER'S CHOICE SECTION 4 AREA 2 5th ELECTION DISTRICT HOWARD COUNTY, MARYLAND
FOR:	FOR: CHEW CONSTRUCTION 504 Baltimore Ave. TOWSON, Md 21204	SCALE 1" = 30'
		DRAWING 10A-4
		JOB NO. 79-087
		FILE NO. 79-087-X



**APPROVED**  
 PLANNING BOARD  
 OF HOWARD COUNTY  
 DATE **3-12-80**  
*JKM*

For Bearings and Distances not shown See Plats 4504 & 4505

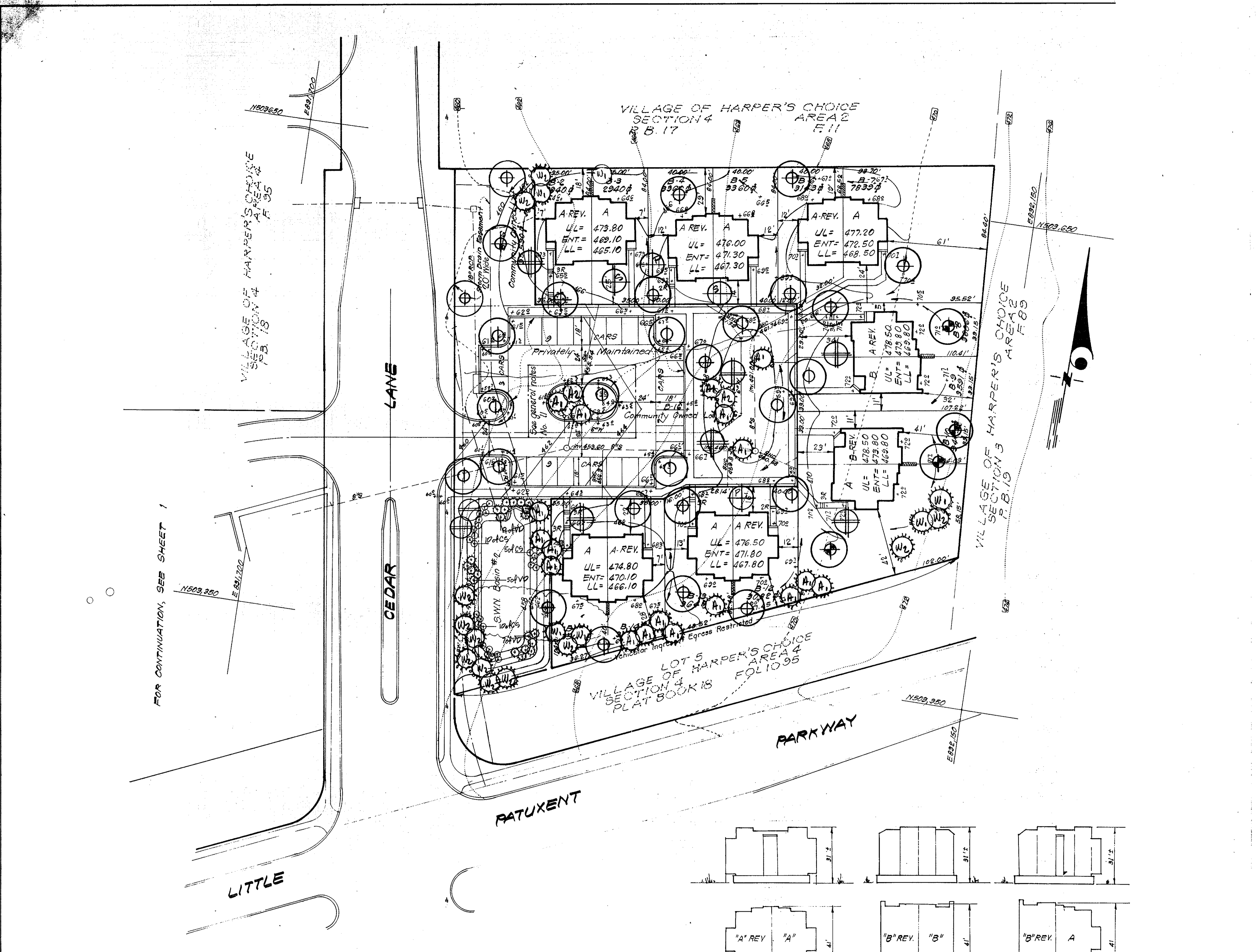
APPROVED FOR PUBLIC WATER AND PUBLIC SEWERAGE SYSTEMS,  
 HOWARD COUNTY HEALTH DEPARTMENT  
*John W. ...* 4-28-80  
 COUNTY HEALTH OFFICER DATE

APPROVED HOWARD COUNTY OFFICE OF PLANNING & ZONING  
*Thomas W. ...* 4-29-80  
 PLANNING DIRECTOR DATE

APPROVED FOR PUBLIC WATER AND PUBLIC SEWERAGE,  
 STORM DRAINAGE SYSTEMS AND PUBLIC ROADS  
 HOWARD COUNTY DEPARTMENT OF PUBLIC WORKS  
*John F. ...* 4-22-80  
 DIRECTOR DATE



<b>CFE</b> CLARK • FINEPROCK & SACKETT ENGINEERS • PLANNERS • SURVEYORS 11315 LOCKWOOD DRIVE SILVER SPRING, MARYLAND 20904 (301) 593-3400		
DESIGNED J.M.E.	<b>SITE DEVELOPMENT PLAN</b> LOTS A-2 THRU A-33 & LOTS B-2 THRU B-16 <b>COLUMBIA</b> VILLAGE OF HARPER'S CHOICE SECTION 4 AREA 4 5TH ELECTION DISTRICT HOWARD COUNTY, MARYLAND	SCALE 1" = 30'
DRAWN J.M.E.		DRAWING 2 of 4
CHECKED K.I.W.		JOB NO. 79-087
DATE J.M.E.		FILE NO. 79-087-X
FOR: CHEW CONSTRUCTION 504 Baltimore Ave Towson, Md. 21284		DATE Jan, 1980

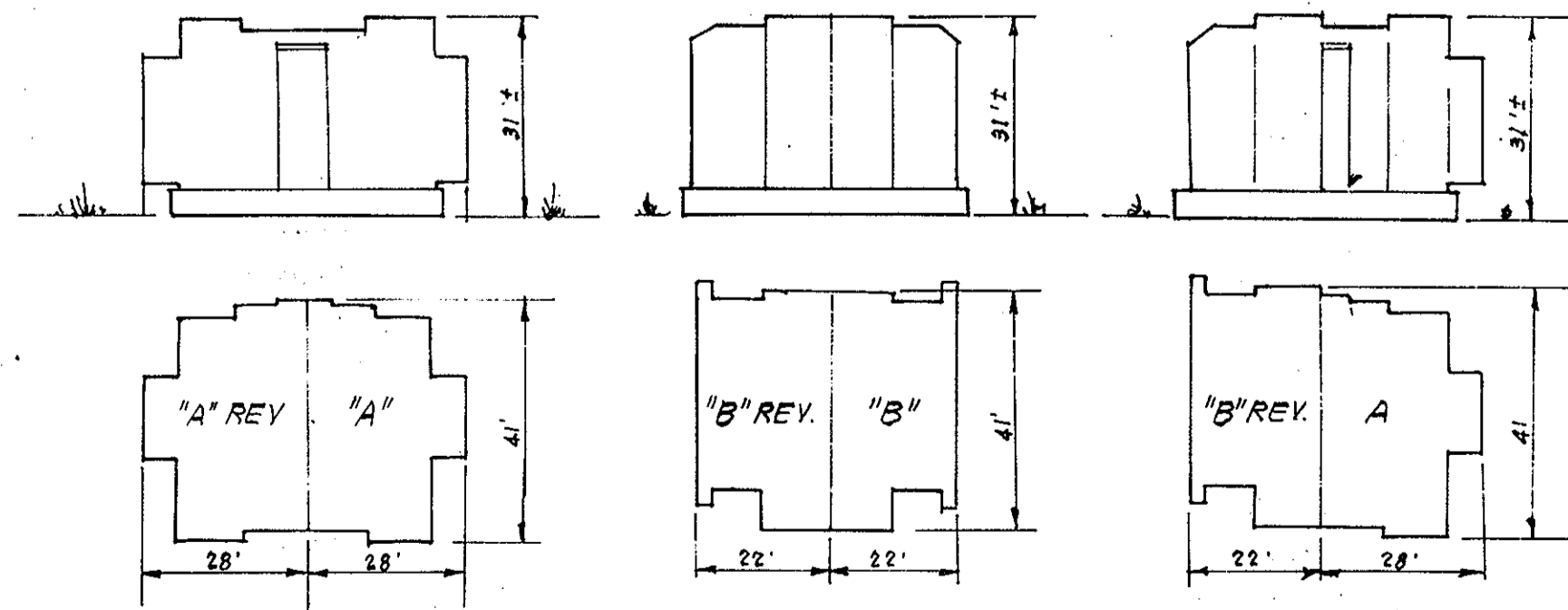


### PLANT SCHEDULE

KEY	PLANT NAME	SIZE	QUANT	REMARKS
⊕	ACER RUBRUM 'OCTOBER GLORY'	2 1/2-3" CAL.	44	B&B HEAVY HEADS
⊕	OCTOBER GLORY MAPLE	12-14' HT.		
⊕	ACER PLATANOIDES	2 1/2-3" CAL.	4	" " "
⊕	NORWAY MAPLE	12-14' HT.		
⊕	TILIA CORDATA	2 1/2-3" CAL.	14	" " "
⊕	LITTLE LEAF LINDEN	12-14' HT.		
⊕	PLATANUS ACERIFOLIA (ORIENTALIS)	2 1/2-3" CAL.	11	" " "
⊕	LONDON PLANE TREE	12-14' HT.		
⊕	FRAXINUS LANCEOLATA MARSHALL'S	2 1/2-3" CAL.	3	" " "
⊕	MARSHALL'S SEEDLESS GREEN ASH	12-14' HT.		
⊕	LIQUIDAMBAR SYRACIFLUA	2 1/2-3" CAL.	10	" " "
⊕	SWEET GUM	12-14' HT.		
⊕	QUERCUS PALUSTRIS	2 1/2-3" CAL.	21	TREES BY DEVELOPER AND/OR BUILDER
⊕	PIN OAK	12-14' HT.		
⊕	PRUNUS SERRULATA KWANZHAW	2-2 1/2" CAL.	15	B&B HEAVY HEADS
⊕	KWANZHAW FLOWERING CHERRY	8-10' HT.		
⊕	AMELANCHIER CANADENSIS	2-2 1/2" CAL.	5	" " "
⊕	SHADBLOW SERVICEBERRY CLUMP	8-10' HT.		
⊕	MALUS PINK PERFECTION	3-5 SYSTEM CLUMP	6	" " "
⊕	PINK P. CRABAPPLE	8-10' HT.		
⊕	MALUS SNOWCLOUD	2-2 1/2" CAL.	8	" " "
⊕	SNOWCLOUD CRABAPPLE	8-10' HT.		
⊕	ACER GINNALA	2-2 1/2" CAL.	10	" " "
⊕	AMUR MAPLE	8-10' HT.		
⊕	PINUS STROBUS	6-8' HT.	20	B&B HEAVY HEADS
⊕	WHITE PINE	8-10' HT.	30	" " "
⊕	PINUS STROBUS	8-10' HT.	30	" " "
⊕	WHITE PINE	6-7' HT.	30	" " "
⊕	PINUS HIGRA	7-8' HT.	13	" " "
⊕	AUSTRIAN PINE	2-3' HT.	21	B&B
⊕	VIBURNUM DEUTATUM	2-3' HT.	25	B&B
⊕	ARROWOOD VIBURNUM			
⊕	CORNUS STOLONIFERA			
⊕	RED OSIER DOGWOOD			

**APPROVED**  
 PLANNING BOARD  
 OF HOWARD COUNTY  
 DATE 3-12-80  
*JUM*

NOTE: ALL PLANT MATERIAL AND PLANTING PROCEDURES SHALL BE IN COMPLIANCE WITH THE STANDARD H.R.D. COLUMBIA PLANTING SPECIFICATIONS. SUBSTITUTIONS MAY BE PERMITTED BUT MUST BE APPROVED BY THE LANDSCAPE ARCHITECT (593-3400)



TYPICAL HOUSES  
 No Scale

APPROVED FOR PUBLIC WATER AND PUBLIC SEWERAGE SYSTEMS,  
 HOWARD COUNTY HEALTH DEPARTMENT  
*James J. Jones* 4-28-80  
 COUNTY HEALTH OFFICER DATE

APPROVED: HOWARD COUNTY OFFICE OF PLANNING & ZONING  
*James J. Jones* 4-29-80  
 PLANNING DIRECTOR DATE

APPROVED FOR PUBLIC WATER AND PUBLIC SEWERAGE,  
 STORM DRAINAGE SYSTEMS AND PUBLIC ROADS  
 HOWARD COUNTY DEPARTMENT OF PUBLIC WORKS  
*Henry F. Neuman* 4-22-80  
 DIRECTOR DATE

*William S. Ray* 4-22-80  
 CHIEF BUREAU OF ENGINEERING DATE

**CLARK • FINEFROCK & SACKETT**  
 ENGINEERS • PLANNERS • SURVEYORS  
 11315 LOCKWOOD DRIVE SILVER SPRING, MARYLAND 20904 (301) 593-3400

**LANDSCAPE PLANTING PLAN**  
 LOTS A-2 THRU A-33 & LOTS B-2 THRU B-16

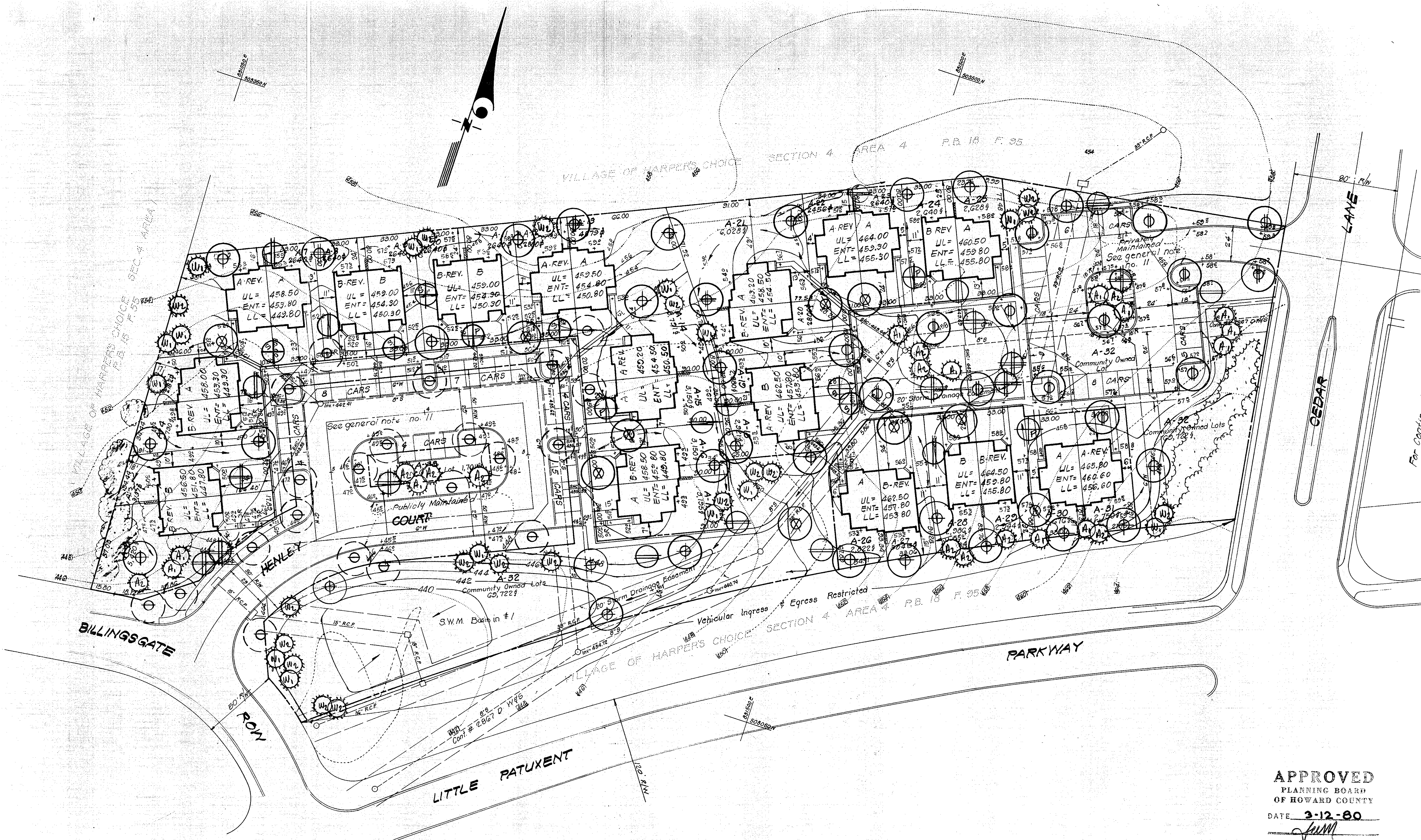
**COLUMBIA**  
 VILLAGE OF HARPER'S CHOICE SECTION 4 AREA 5  
 5TH ELECTION DISTRICT, HOWARD COUNTY, MD.

FOR CHEVY CONSTRUCTION  
 504 BALTIMORE AVE.  
 TOWSON, MD. 21204

DESIGNED THEIMER  
 DRAWN  
 CHECKED  
 DATE 3-18-80

SCALE 1"=30'  
 DRAWING 3044  
 JOB NO.  
 FILE NO. 79-087L5

*James J. Jones*  
 LAND SURVEYOR



**APPROVED**  
 PLANNING BOARD  
 OF HOWARD COUNTY  
 DATE 3-12-80  
*JMM*

APPROVED FOR PUBLIC WATER AND PUBLIC SEWERAGE SYSTEMS,  
 HOWARD COUNTY HEALTH DEPARTMENT  
*John R. ...* 4-25-80  
 COUNTY HEALTH OFFICER DATE

APPROVED HOWARD COUNTY OFFICE OF PLANNING & ZONING  
*...* 4-27-80  
 PLANNING DIRECTOR DATE

CHIEF DIVISION OF LAND DEVELOPMENT  
*...* 4-29-80  
 DATE

APPROVED FOR PUBLIC WATER AND PUBLIC SEWERAGE,  
 STORM DRAINAGE SYSTEMS AND PUBLIC ROADS  
 HOWARD COUNTY DEPARTMENT OF PUBLIC WORKS  
*Henry F. Newman* 4-11-80  
 DIRECTOR DATE

*...* 4-22-80  
 CHIEF BUREAU OF ENGINEERING DATE

For Bearings and Distances not shown See Plats 4504 & 4505

<b>CLARK • FINEROCK &amp; SACKETT</b> ENGINEERS • PLANNERS • SURVEYORS 11315 LOCKWOOD DRIVE SILVER SPRING, MARYLAND 20904 (301) 593 3400		
DESIGNED WHT	LANDSCAPE PLANTING PLAN LOTS A-2 THRU A-33 & LOTS B-2 THRU B-16	SCALE 1"=30'
DRAWN	<b>COLUMBIA</b> VILLAGE OF HARPER'S CHOICE SECTION 4 AREA 4 5TH ELECTION DISTRICT HOWARD COUNTY, MARYLAND	DRAWING 4 of 4
CHECKED		JOB NO. 73-087
DATE 3-18-80	FOR: CHEW CONSTRUCTION 504 BALTIMORE AVE TOWSON, MD 21284	FILE NO. 79-087-LS

