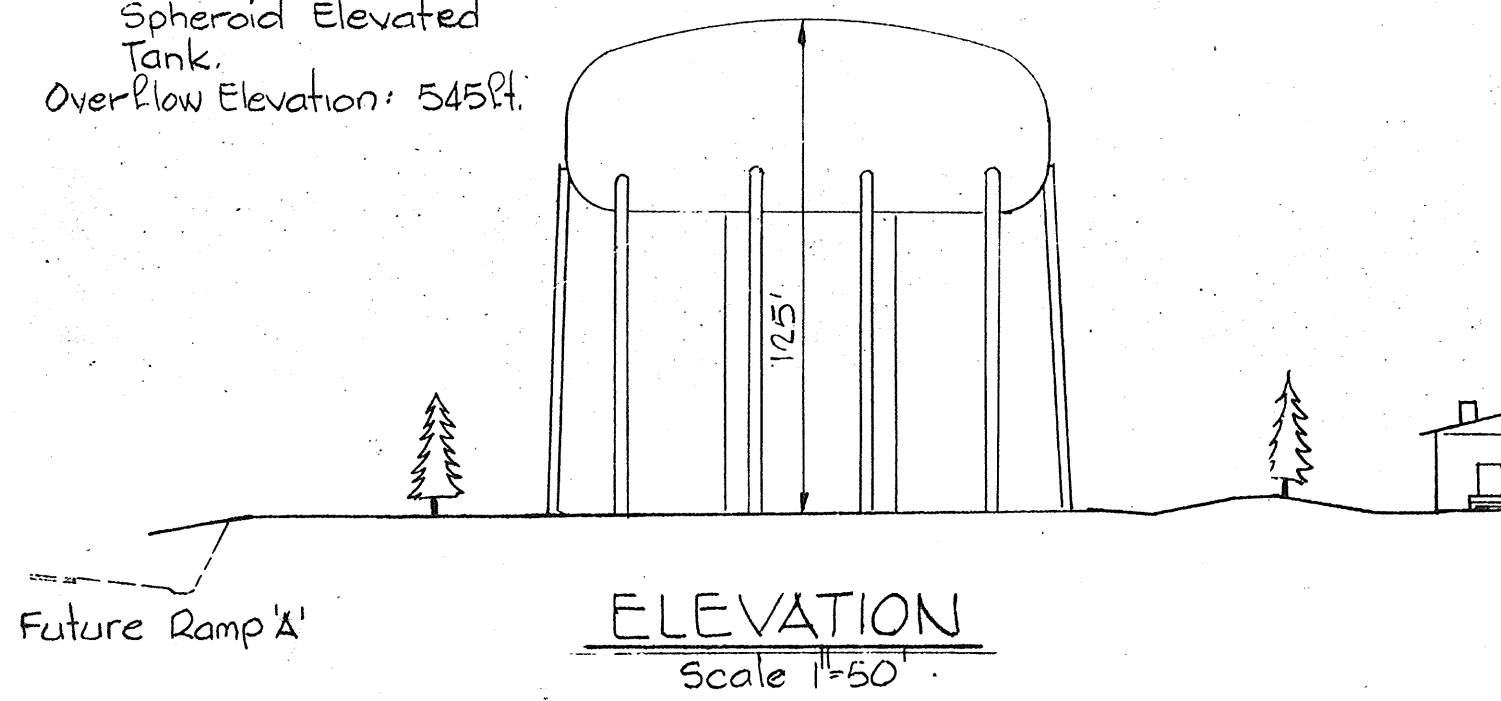
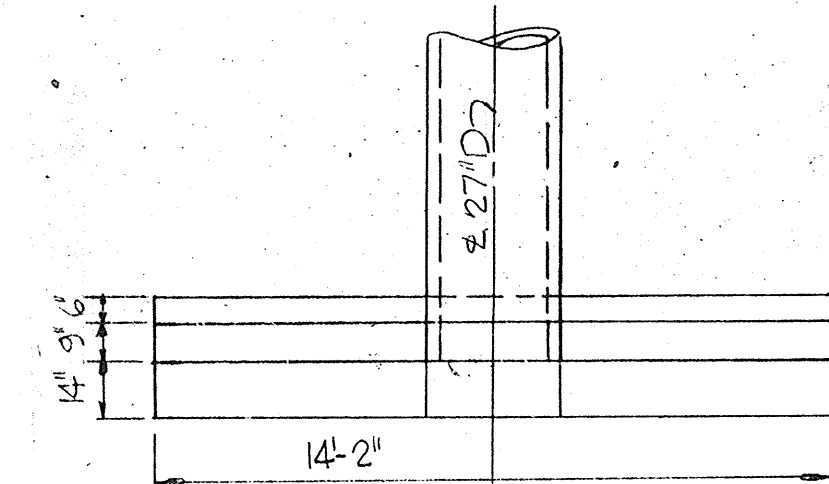
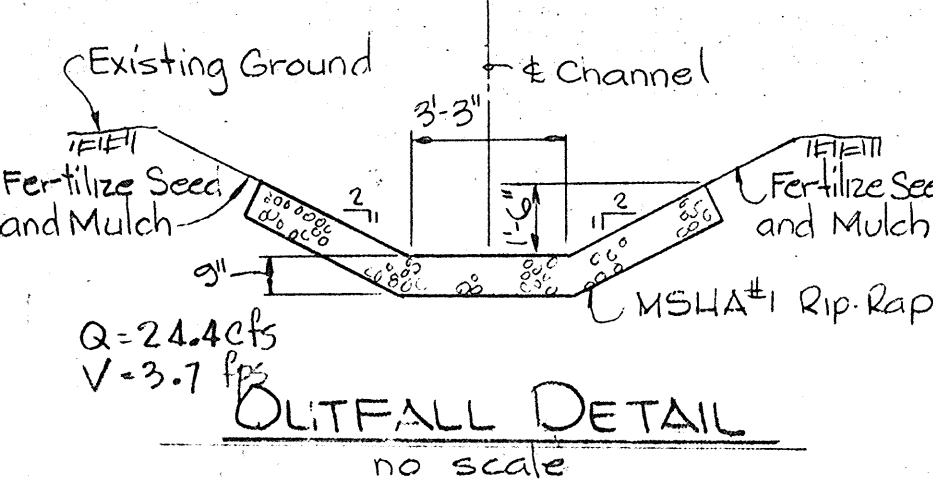


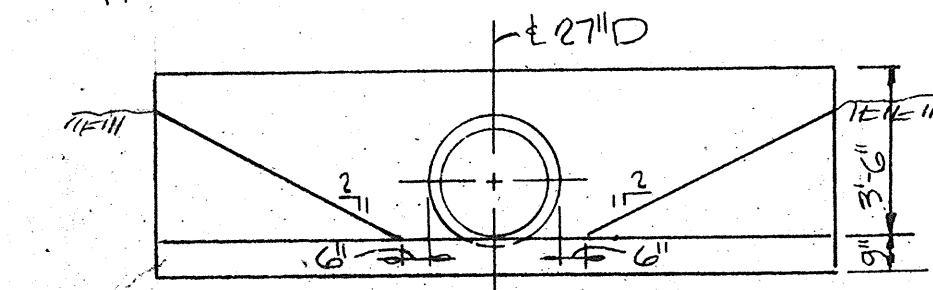
DATA:
Capacity: 3 MG.
Structure: Multi-Column
Spheroid Elevated
Tank.
Overflow Elevation: 545ft.



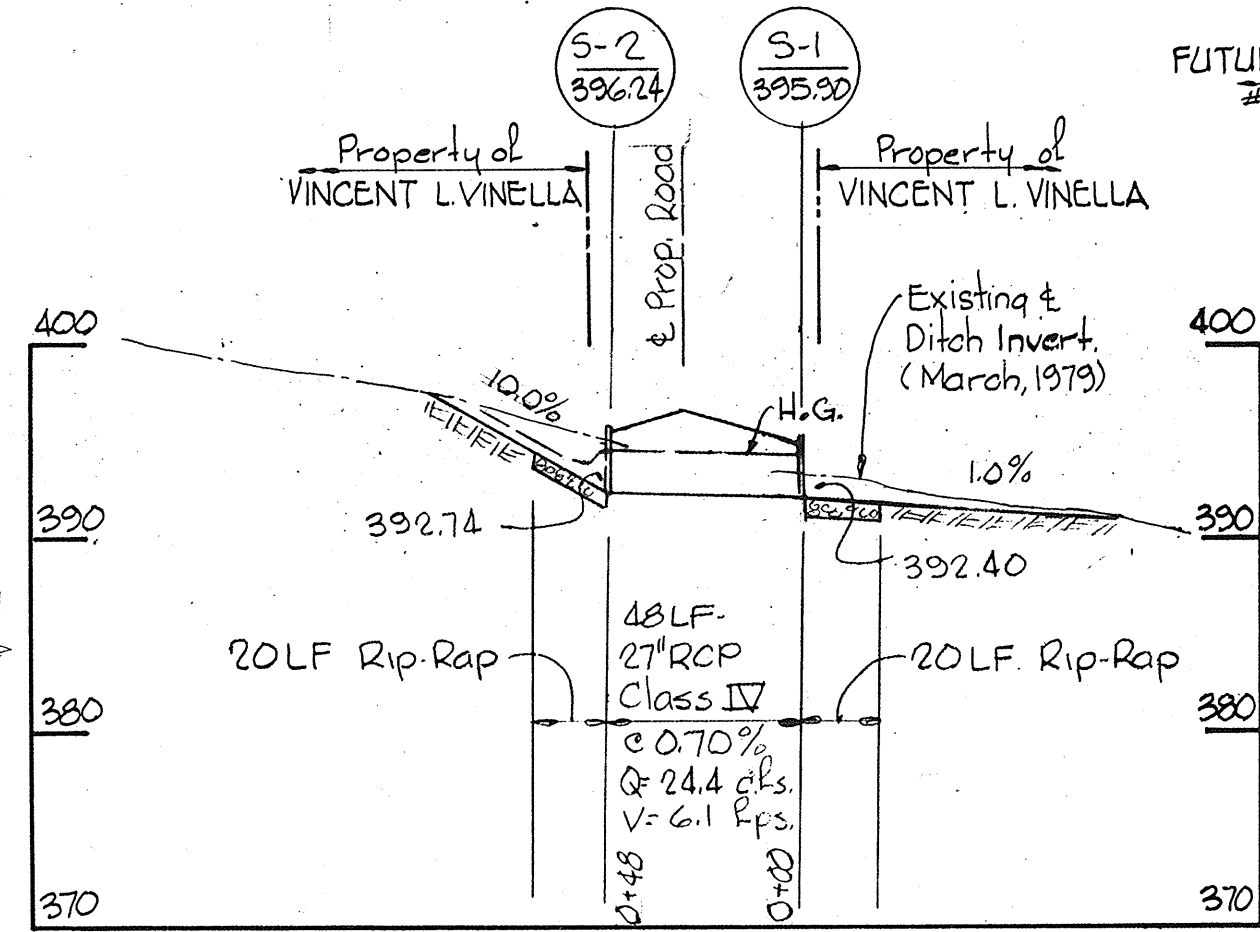
W.R. & B.M. # D-2-79 Elev. 429.34
R.R. Spike in G.E. Pole # 488168
Northwest corner of Property
(Howard County).



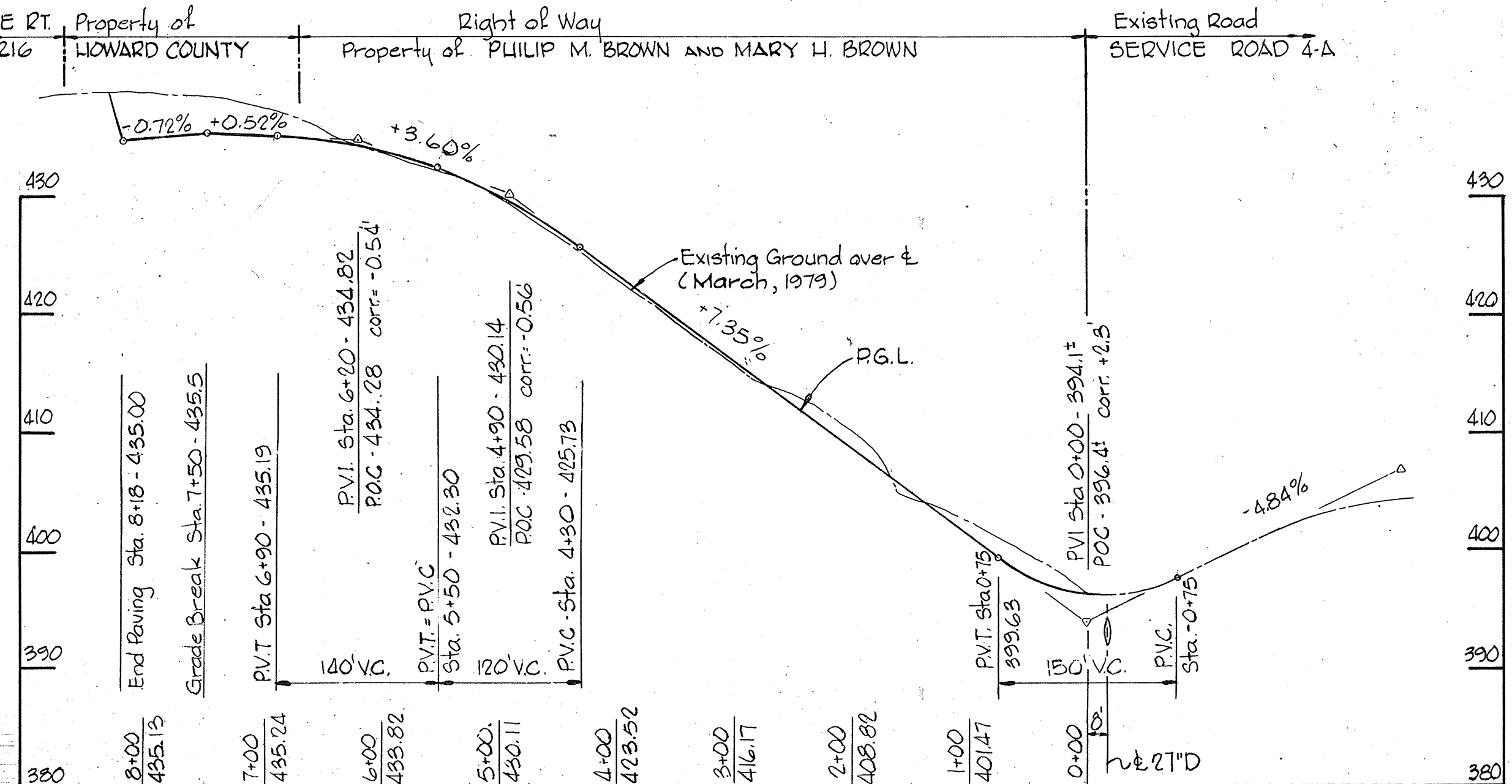
Note: See Howard County standard Support Wall (D-52)



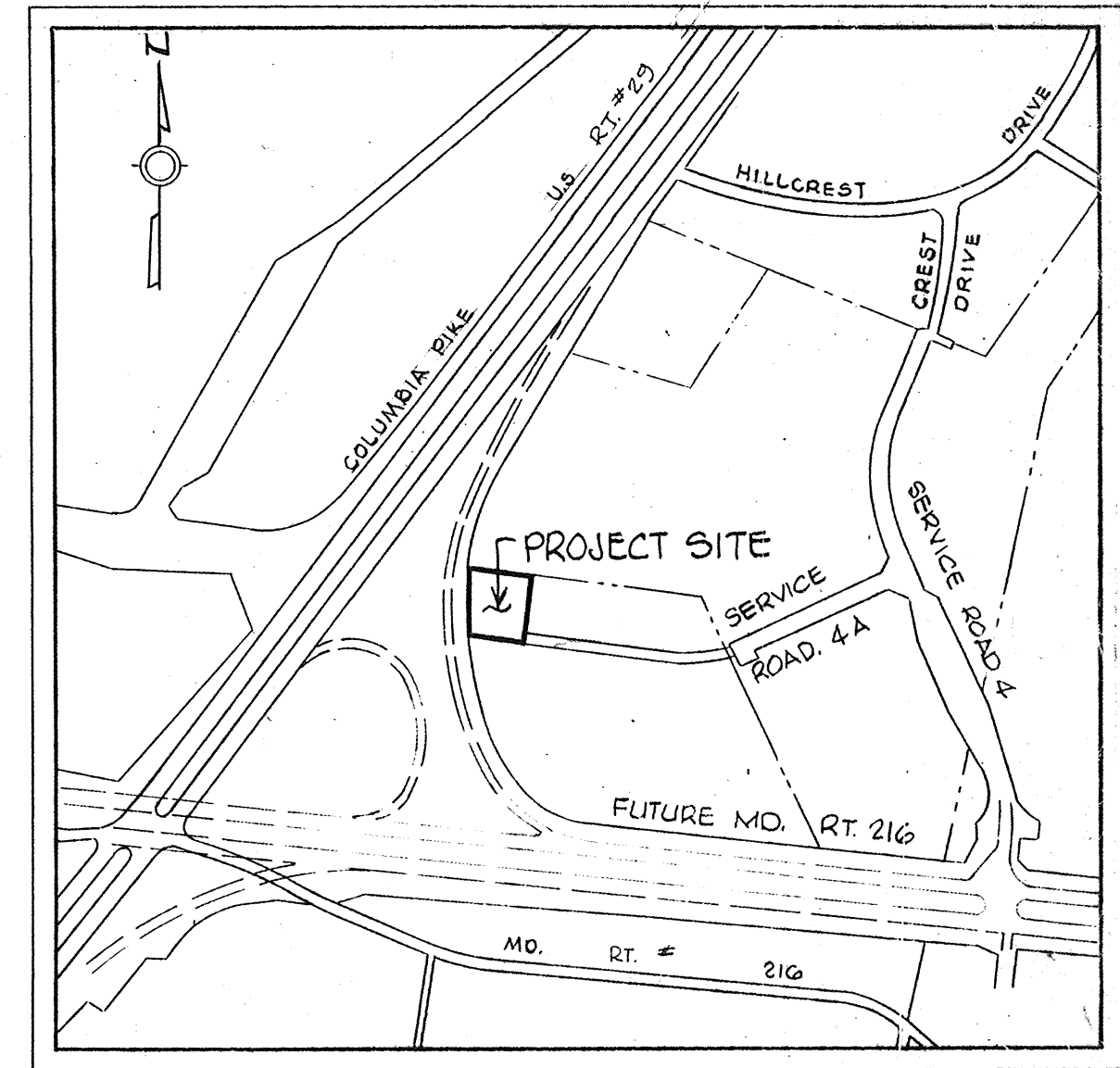
ENDWALL DETAIL
no scale



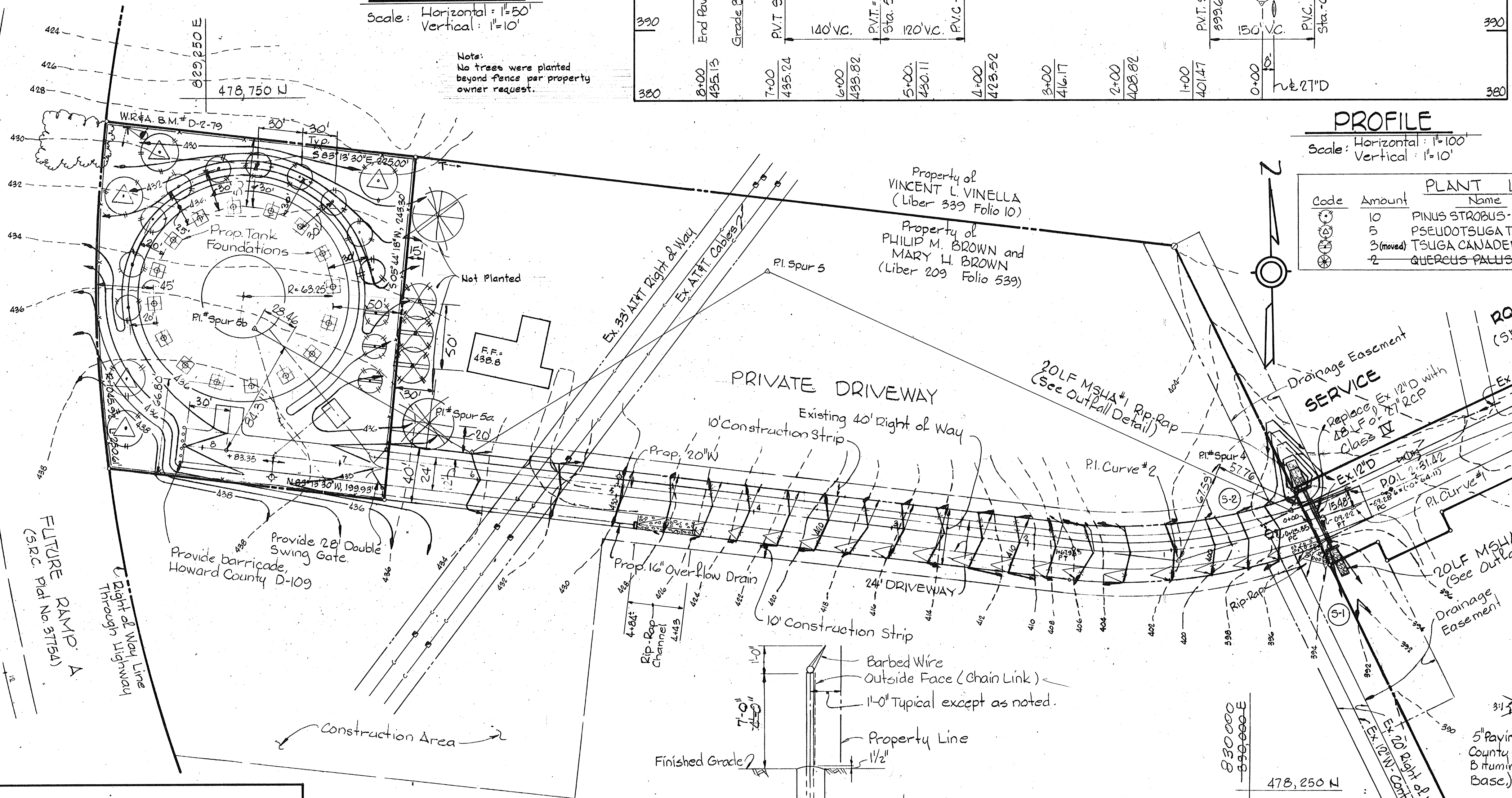
PROFILE
Scale: Horizontal: 1"=50'
Vertical: 1"=10'



PROFILE
Scale: Horizontal: 1"=100'
Vertical: 1"=10'



LOCATION PLAN
Scale: 1"=600'

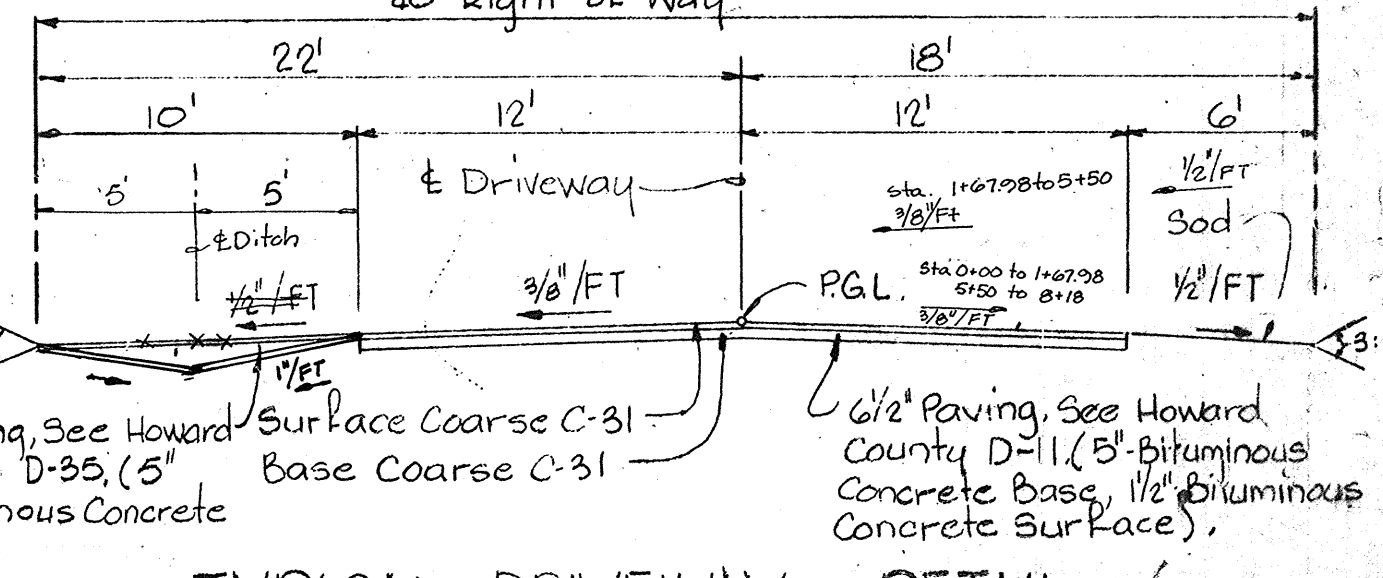


SITE PLAN
Scale: 1"=50'

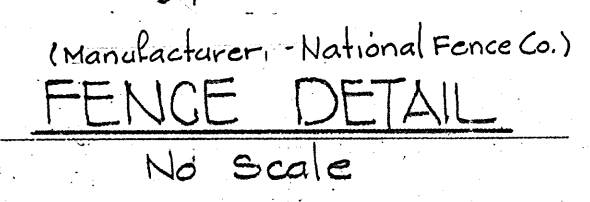
PLANT LIST			
Code	Amount	Name	Size
①	10	Pinus strobus - White Pine	6/8" Ht.
②	5	Pseudotsuga taxifolia - Douglas Fir	8/10" Ht.
③	3 (moved)	Tsuga canadensis - Canadian Hemlock	6/8" Ht.
④	2	Quercus palustris - Pin Oak	2 1/2" Cal.

SITE ANALYSIS	
Area of site	1.22 Ac.
Number of Employees	0
Parking Required	0
Parking Provided	2
Area to be graded	0.79 Ac.
Area to be paved	0.35 Ac.
Area to be seeded	0.09 Ac.
Area to be undisturbed	0.70 Ac.
Zoned	R-10
Tax Map Number	46
See Council Resolution	154:8/79

APPROVED
DIVISION OF LAND DEVELOPMENT
HOWARD COUNTY, MARYLAND
DATE: 11-19-79
TYPICAL PARKING



TYPICAL DRIVEWAY DETAIL
No Scale



FENCE DETAIL
No Scale

CURVE DATA			
PC: (0+09.22) to PT: (0+59.28)	PC: 0+25.35 to PT: 1+67.93		
Δ: 08° 21' 47"	T: 25.08'	Δ: 23° 49' 03"	T: 72.34'
R: 343.00'	L: 50.07'	R: 343.00'	L: 142.58'
Chd: 50.02'		Chd: 141.56'	
Chd. Brg.: N 68° 46' 33" E.		Chd. Brg.: S 84° 51' 58" W	

WHITMAN, REQUARDT AND ASSOCIATES
ENGINEERS
1304 ST. PAUL STREET
BALTIMORE, MARYLAND
Kenneth A. Mc Cord
R.E. & L.S. NO. 1974

HOWARD COUNTY, MARYLAND
OWNER AND DEVELOPER
Liber - 647, Folio - 24
Tax Map 46, Parcel 292
Zoned R-20

Reviewed for Howard S.C.D. Name
and meets technical requirements
J. Hehn 12/28/78 Signature Date
U.S. Soil Conservation Service
APPROVED FOR PUBLIC WATER SYSTEM
HOWARD COUNTY HEALTH DEPARTMENT
James W. Dool 12/31/79 COUNTY HEALTH OFFICER DATE

THIS DEVELOPMENT PLAN IS APPROVED FOR SOIL EROSION AND SEDIMENT CONTROL BY THE HOWARD SOIL CONSERVATION DISTRICT.
Robert W. Ziem 12/28/79 APPROVED (HOWARD S.C.D.) DATE

APPROVED FOR STORM DRAINAGE SYSTEMS AND ROADS. HOWARD COUNTY DEPARTMENT OF PUBLIC WORKS.
Francis W. Weiland 12/31/79 DIRECTOR (acting) DATE
W. P. Libere 12-31-79 CHIEF, BUREAU OF ENGINEERING DATE

APPROVED: HOWARD COUNTY OFFICE OF PLANNING AND ZONING
John M. ... 12-31-79 PLANNING DIRECTOR, Acting DATE
John M. ... 12-31-79 CHIEF, DIVISION OF LAND DEVELOPMENT DATE

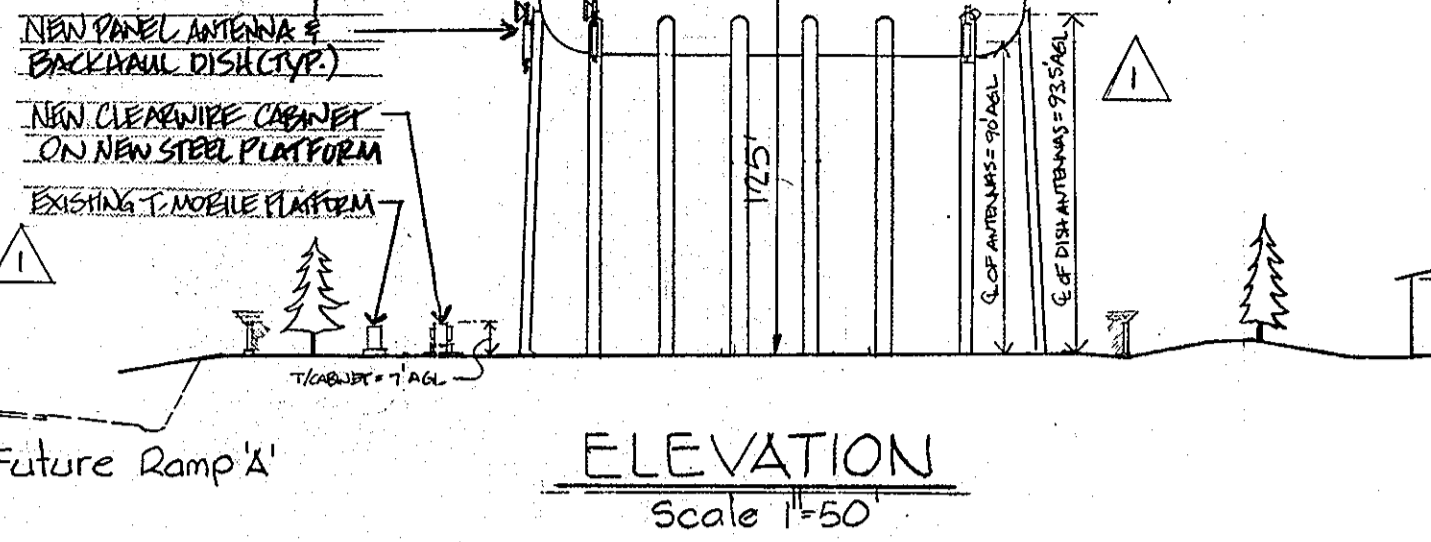
CERTIFICATION BY THE ENGINEER
"I certify that this plan for Erosion and Sediment control represents a practical and workable plan based on my personal knowledge of the site condition and it was prepared in accordance with the requirements of the Howard Soil Conservation District."
Kenneth A. Mc Cord 5-25-79 Signature of Engineer Date

CERTIFICATION BY THE DEVELOPER
"I certify that all development and/or construction will be done according to these Plans of Development and Plans for Erosion and Sediment Control and I also authorize periodic on site inspection by the Howard Soil Conservation District or their authorized agents as are deemed necessary. Deviation from this plan will not be made unless authorized by the Howard Soil Conservation District."
John F. Newman 12-21-79 Signature of Developer Date

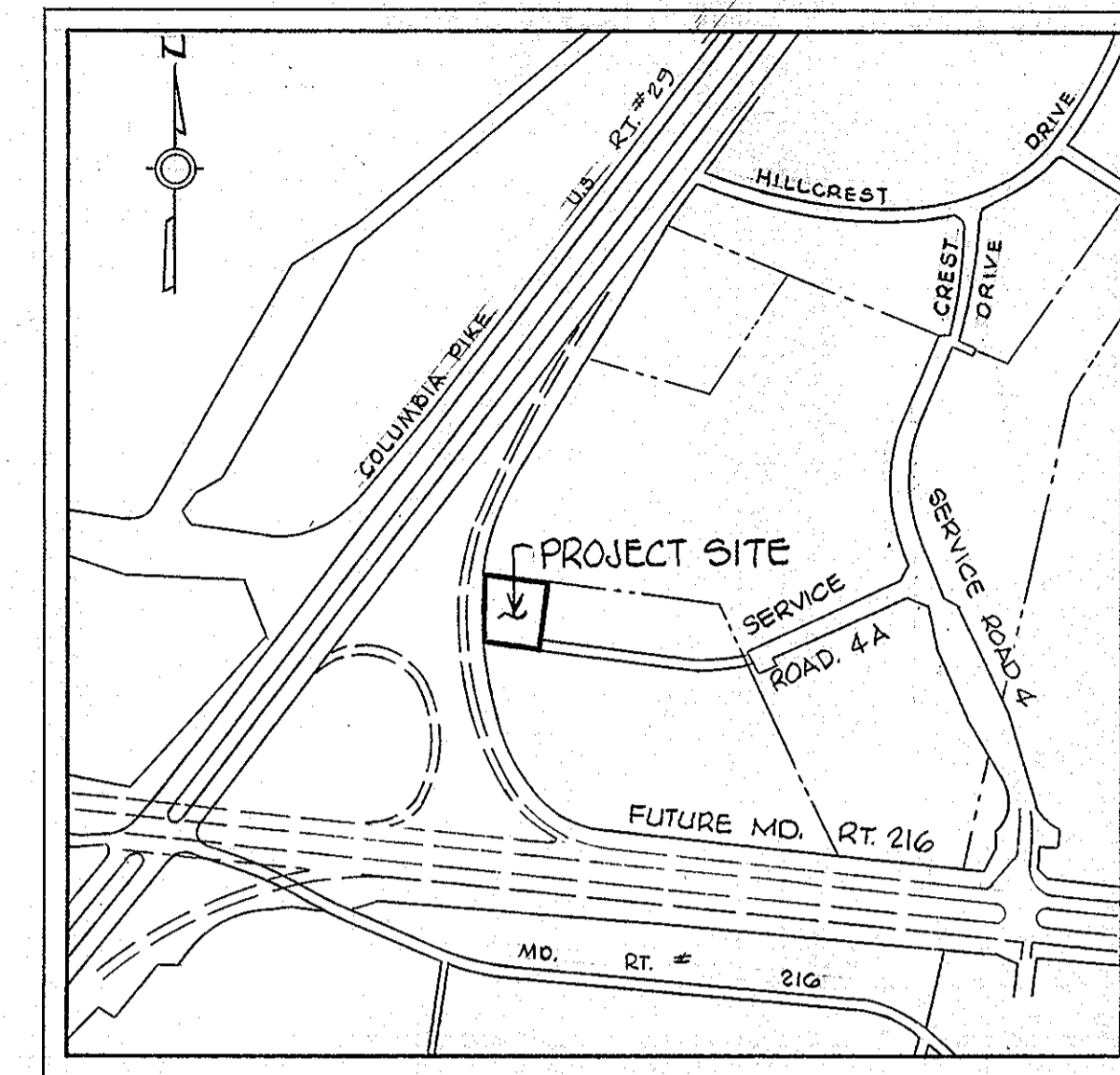
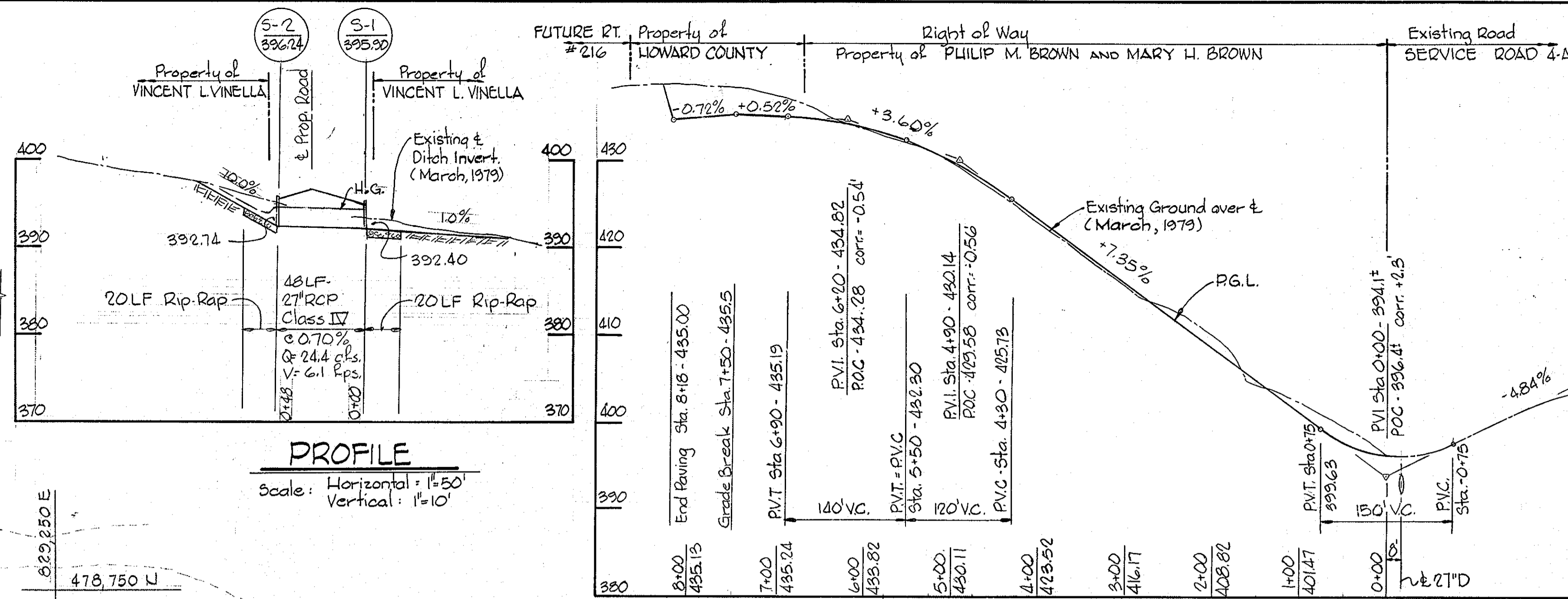
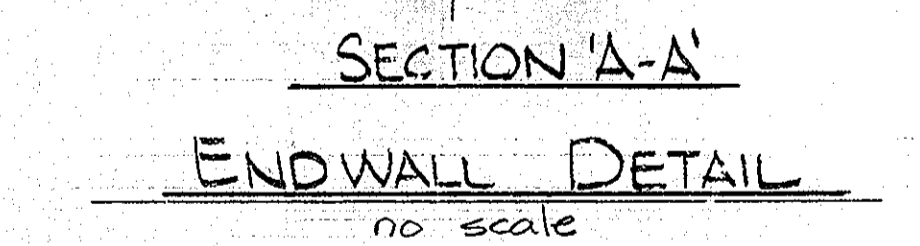
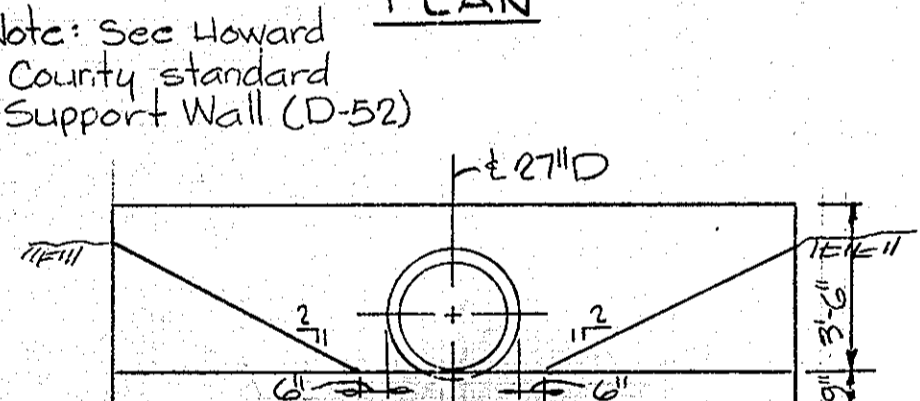
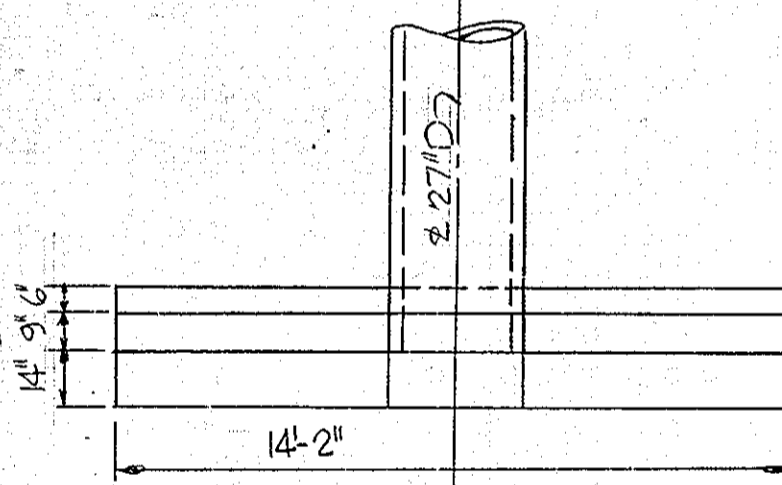
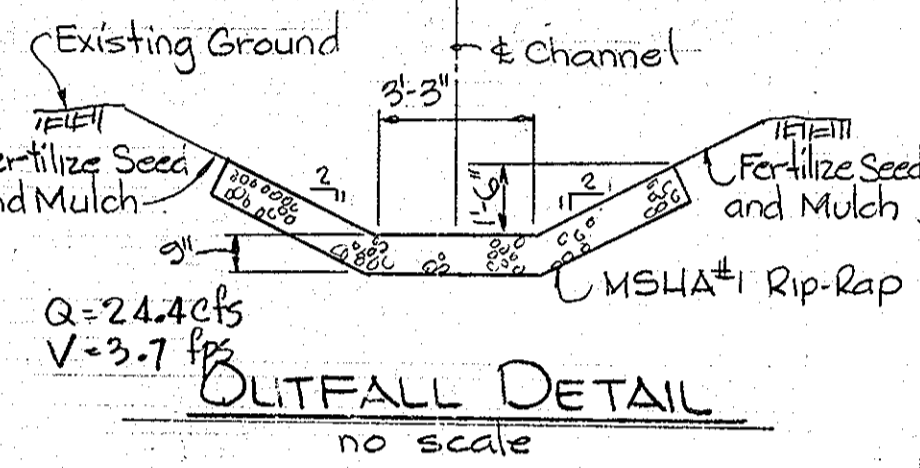
NO.	DATE	DESCRIPTION OF REVISION

SITE DEVELOPMENT PLAN
FOR
SCAGGSVILLE WATER STORAGE FACILITY
AS-BUILT PROJECT NO. W-4-8021
CONTRACT NO. 887-W
ELECTION DISTRICT GUILFORD NO. 6
HOWARD COUNTY, MARYLAND
Date: August 4, 1982
December 20, 1979 Scale: As Shown

DATA:
Capacity: 3 MG.
Structure: Multi-Column
Spheroid Elevated
Tank.
Overflow Elevation: 545ft.

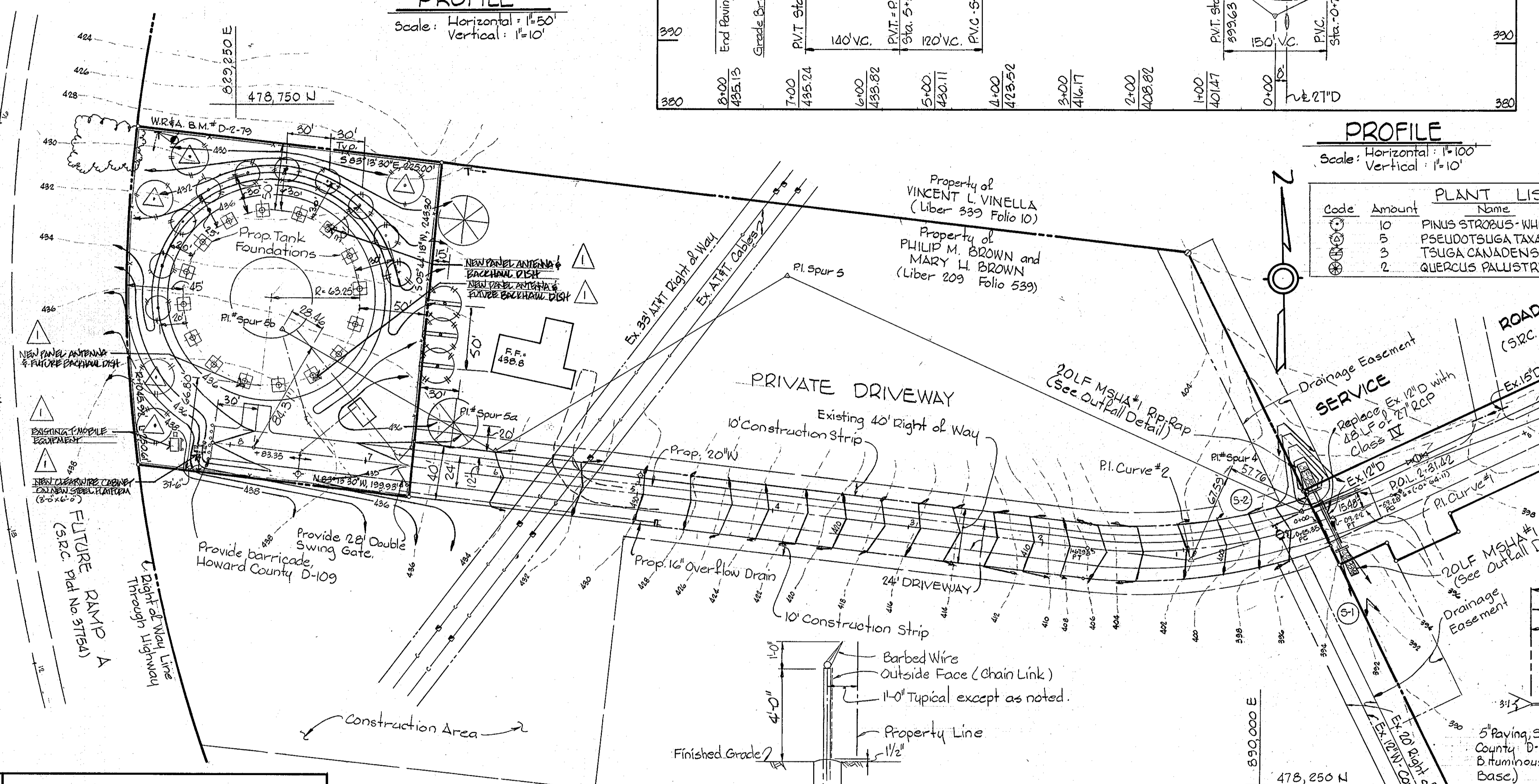


W.R. & B.M. # D-2-79 Elev. 429.34
R.R. Spike in G.E. Pole # 48816B
Northwest corner of Property
(Howard County).

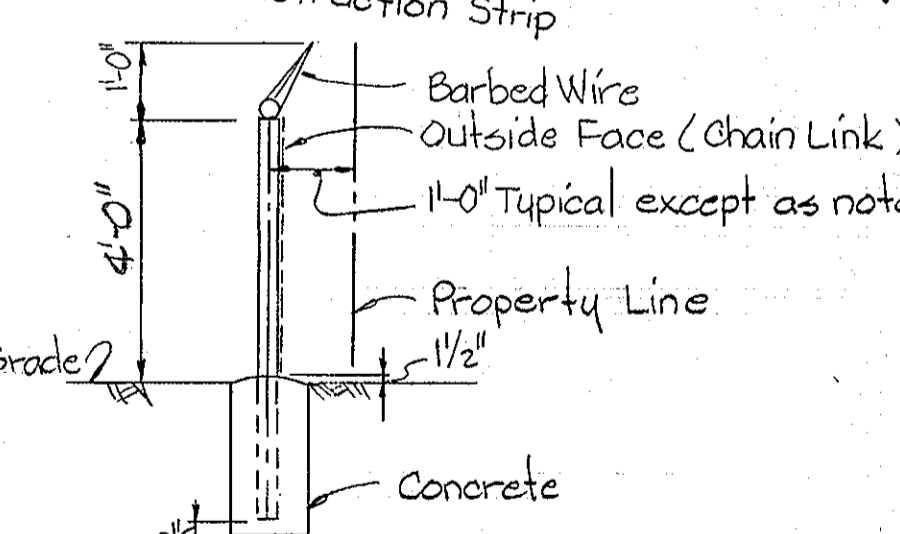
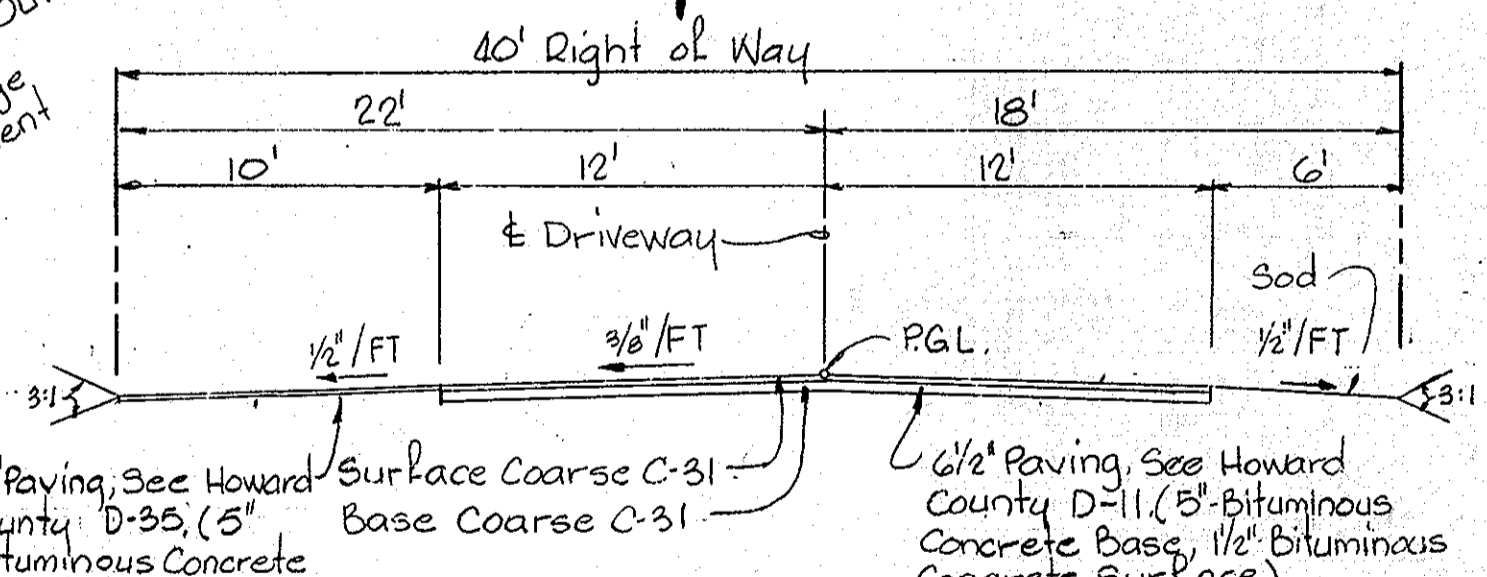


Code	Amount	PLANT LIST Name	Size
10	10	PINUS STROBUS - WHITE PINE	6/8" Ht.
3	3	PSEUDOTSUGA TAXIFOLIA - DOUGLAS FIR	8/10" Ht.
5	5	TSUGA CANADENSIS - CANADIAN HEMLOCK	6/8" Ht.
2	2	QUERCUS PALUSTRIS - PIN OAK	2 1/2" SCAL

SITE ANALYSIS	
Area of site	1.24 Ac.
Number of Employees	0
Parking Required	0
Parking Provided	2
Area to be graded	0.79 Ac.
Area to be roofed	0.35 Ac.
Area to be paved	0.09 Ac.
Area to be seeded	0.70 Ac.
Area to be undisturbed	0.10 Ac.
Zoned	R-20
Tax Map Number	46
See Council Resolution 154:8179	



APPROVED
DIVISION OF LAND DEVELOPMENT
HOWARD COUNTY, MARYLAND
DATE 11-19-79
JUM



CURVE DATA	
PC: (0+09.22) to PT: (0+59.28)	PC: 0+25.35 to PT: 1+67.93
Δ = 08° 21' 47" T = 25.00'	Δ = 23° 49' 03" T = 72.34'
R = 343.00' L = 50.07'	R = 343.00' L = 142.58'
Chd = 50.02'	Chd = 141.56'
Chd. Brg. = N 68° 46' 33" E	Chd. Brg. = S 84° 51' 58" W

WHITMAN, REQUARDT AND ASSOCIATES
ENGINEERS
1304 ST. PAUL STREET
BALTIMORE, MARYLAND
Kenneth A. Mc Cord
RE. & L.S. NO. 1974

HOWARD COUNTY, MARYLAND
OWNER AND DEVELOPER
Liber - 647, Folio - 24
Tax Map 46, Parcel 292
Zoned R-20

Reviewed for Howard S.C.D. Name and meets technical requirements
Signature: J. Hehner 12/28/79
U.S. Soil Conservation Service
APPROVED FOR PUBLIC WATER SYSTEM HOWARD COUNTY HEALTH DEPARTMENT
Signature: Joyce M. Ouellet 12-31-79
COUNTY HEALTH OFFICER DATE

THIS DEVELOPMENT PLAN IS APPROVED FOR SOIL EROSION AND SEDIMENT CONTROL BY THE HOWARD SOIL CONSERVATION DISTRICT.
Signature: Robert W. Ziehm 12/29/79
APPROVED (HOWARD S.C.D.) DATE

APPROVED FOR STORM DRAINAGE SYSTEMS AND ROADS. HOWARD COUNTY DEPARTMENT OF PUBLIC WORKS.
Signature: Francis W. McLeod 12/31/79
DIRECTOR (acting) DATE

APPROVED: HOWARD COUNTY OFFICE OF PLANNING AND ZONING
Signature: [Signature] 12-31-79
PLANNING DIRECTOR, Acting DATE

CERTIFICATION BY THE ENGINEER
"I certify that this plan for Erosion and Sediment control represents a practical and workable plan based on my personal knowledge of the site condition and it was prepared in accordance with the requirements of the Howard Soil Conservation District"
Signature: Kenneth A. Mc Cord 5-25-79
Date

CERTIFICATION BY THE DEVELOPER
"I certify that all development and/or construction will be done according to these Plans of Development and Plans for Erosion and Sediment Control and I also authorize periodic on site inspection by the Howard Soil Conservation District or their authorized agents as are deemed necessary." Deviation from this plan will not be made unless authorized by the Howard Soil Conservation District.
Signature: [Signature] 12-31-79
Date

NO.	DATE	DESCRIPTION OF REVISION
1	11/12/09	UPDATED SITE LAYOUT

SITE DEVELOPMENT PLAN
FOR
SCAGGSVILLE WATER STORAGE FACILITY
PROJECT NO. W-4-8021
CONTRACT NO. 887-W
ELECTION DISTRICT GUILFORD NO. 6
HOWARD COUNTY, MARYLAND
Date: December 20, 1979 Scale: As Shown