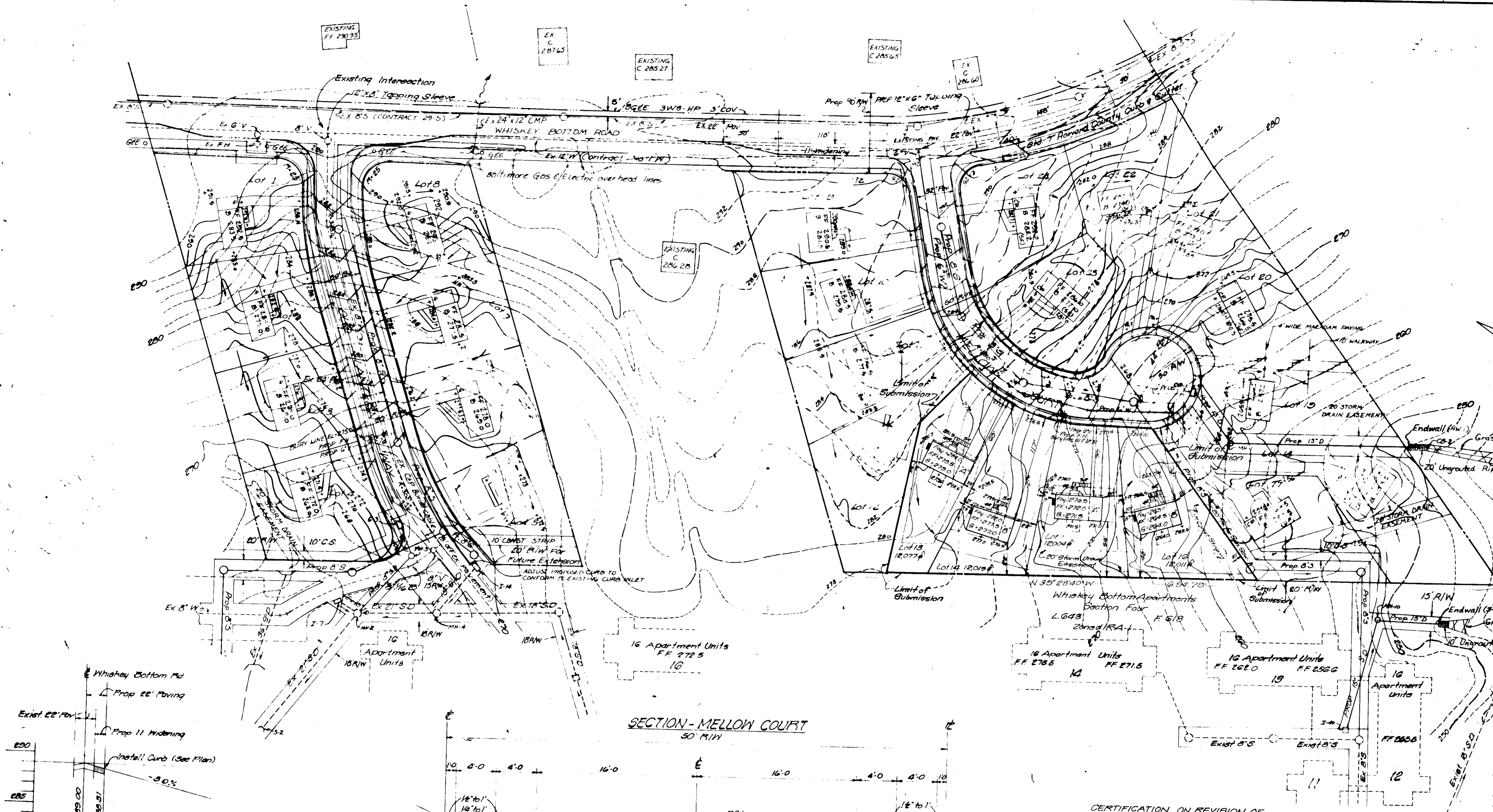
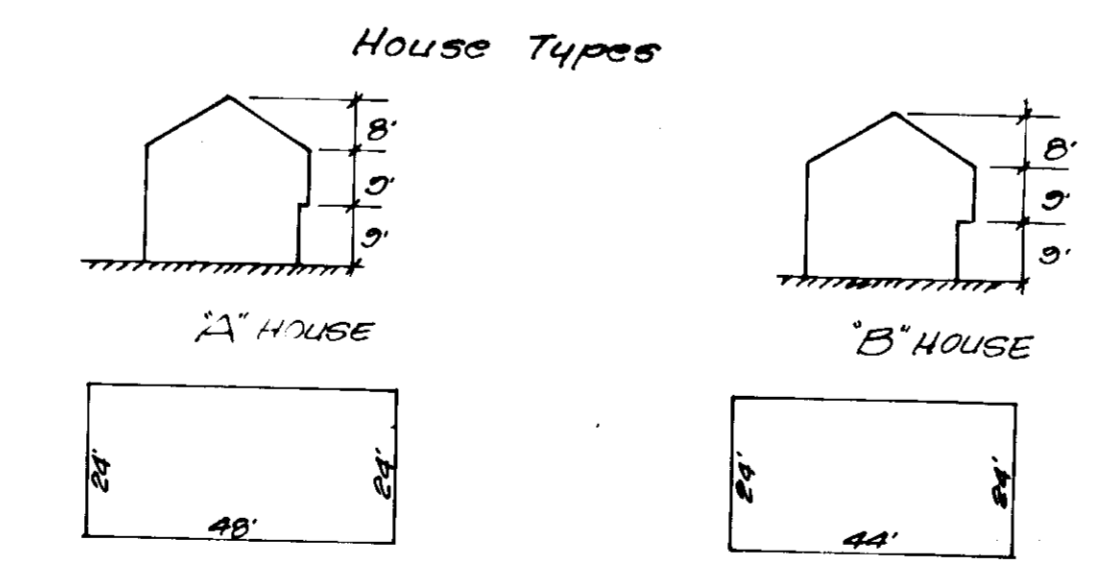
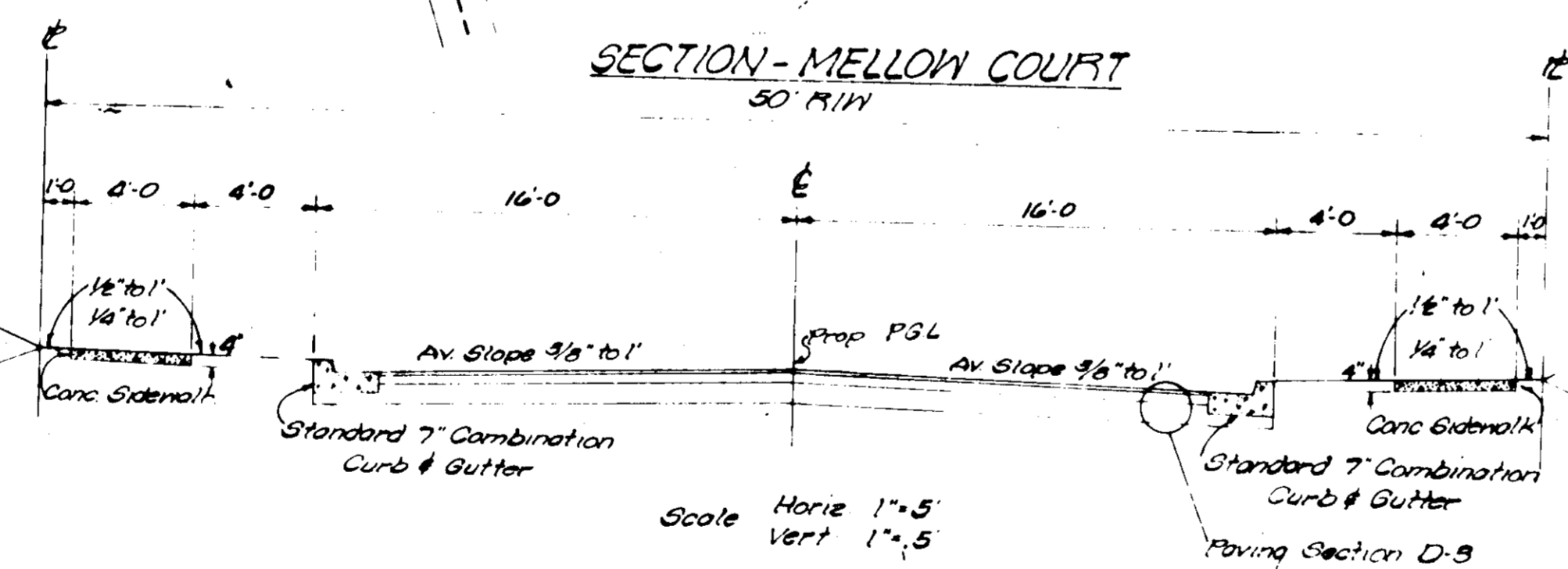


VICINITY MAP
Scale 1"=2000'

Site Analysis for Lots 13 thru 16
Total Area of Lots = 48,107 sq. ft. = 1.1043 Ac.
Existing Zoning = R-12
Total # of Lots = 4 Lots



INTERSECTION DETAIL WHISKEY BOTTOM ROAD AND MELLOW COURT
Scale 1"=50' Horiz. 1"=5' Vert.



CERTIFICATION ON REVISION OF LOTS 13, 14, 15 & 16, MELLOW COURT

Reference is made to Approved Plans SDP-78-122

This is to certify that House Types on Lots 13-16 were changed, and that no grading change affects approved plans, 10' Sediment Control Plans or Utility & Street Plans.

House Dimensions are:
Model 'A' = 48' x 26'
Model 'B' = 44' x 26'
House Type = Split Foyer w/ Basement Garage

GENERAL NOTES

- Total Area of Lots = 48,107 sq. ft. = 1.1043 Ac.
- Existing Zoning is R-12
- Total No. of Lots = 4
- Public Water and Sewer to be utilized.
- All Material and Construction shall be in accordance with the Howard County Road Construction Code and Specifications.
- Any damage to the County owned Right of Way or paving will be corrected at Developer's expense.

ALL STREETS WILL BE PUBLIC AND ALL DRIVEWAYS OUTSIDE OF PUBLIC R/W'S WILL BE PRIVATE

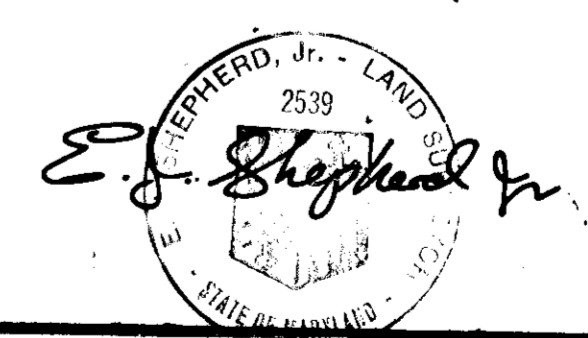
PRESENT OWNER:
I-95 ENTERPRISES, INC.
1720 WISCONSIN AVE NW
WASHINGTON, DC 20007

DEVELOPER:
THE HOLLADAY CORPORATION
1720 WISCONSIN AVE NW
WASHINGTON, DC 20007

PROJECT ENGINEER:
I.P.D.S. LTD.
802 SLIGO AVENUE
SILVER SPRING, MD. 20910

APPROVED
DIVISION OF LAND DEVELOPMENT

HOWARD COUNTY, MARYLAND
DATE 10-18-79
JWM



APPROVED For Public Water, Public Sewerage and Storm Drainage Systems and Roads
HOWARD COUNTY DEPARTMENT OF PUBLIC WORKS
Director
11-18-79
11/14/79

APPROVED For Public Water and Public Sewerage Systems
HOWARD COUNTY HEALTH DEPARTMENT
County Health Officer
11-21-79

APPROVED Howard County Office of Planning and Zoning
11-23-79
11-21-79

WHISKEY BOTTOM NORTH Lots 13-16
I-95 ENTERPRISES, a Maryland Limited Partnership
L 562 F 673 Tax Map # 47 Parcel #
ELECTION DISTRICT NO. 6
HOWARD COUNTY, MARYLAND

SITE DEVELOPMENT
PLAN For Lots 13, 14, 15, 16
REVISION TO APP. SDP-78-122
P.S. No. 4201-95

SCALE
1"=50'
DATE

The Interprofessional (301) 585-5676
PLANNING & DESIGN STUDIO, LTD.
Engineers - Architects - Surveyors
Planners & Landscape Architects
802 SLIGO AVENUE, SILVER SPRING, MD. 20910

Sheet
1 of 1