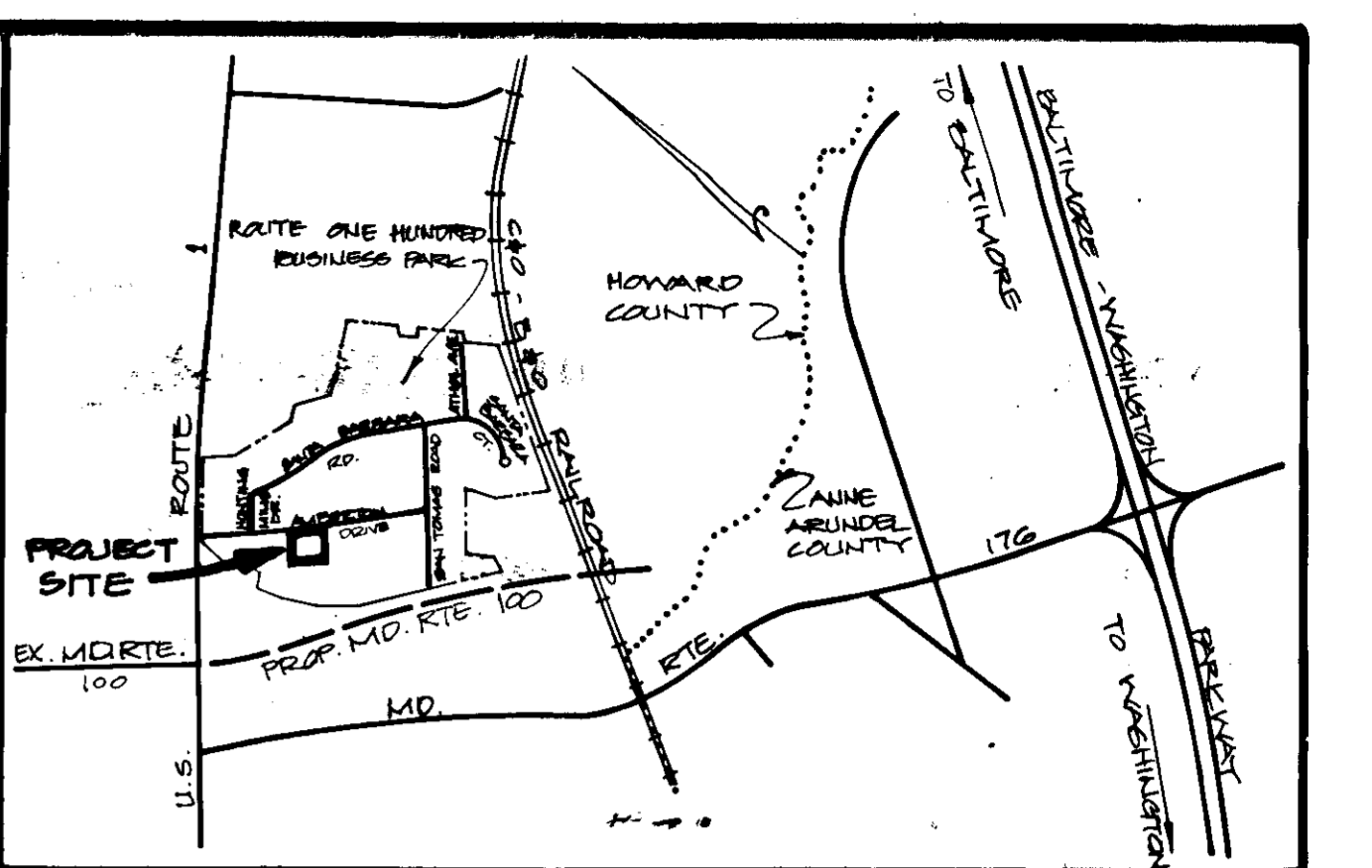
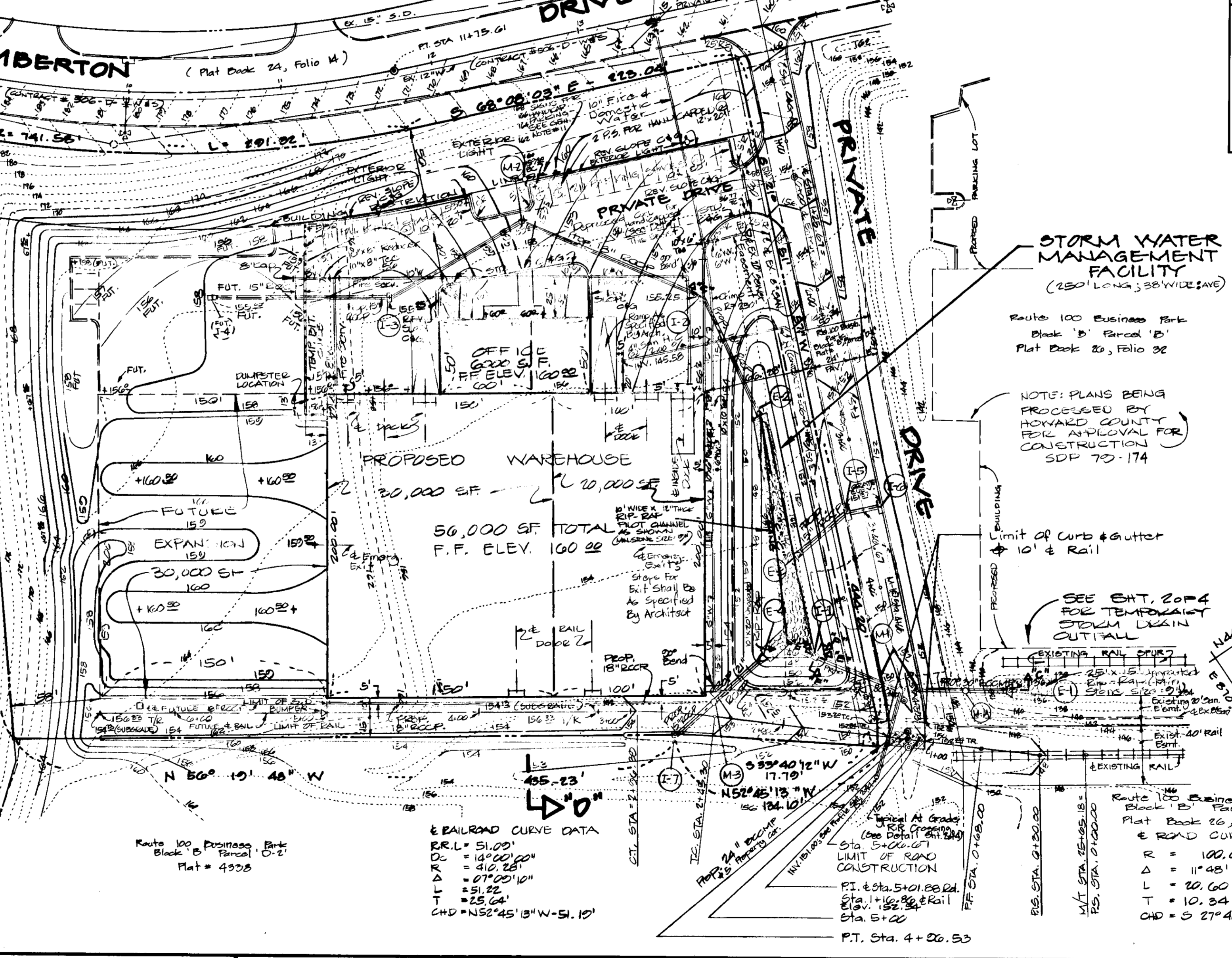
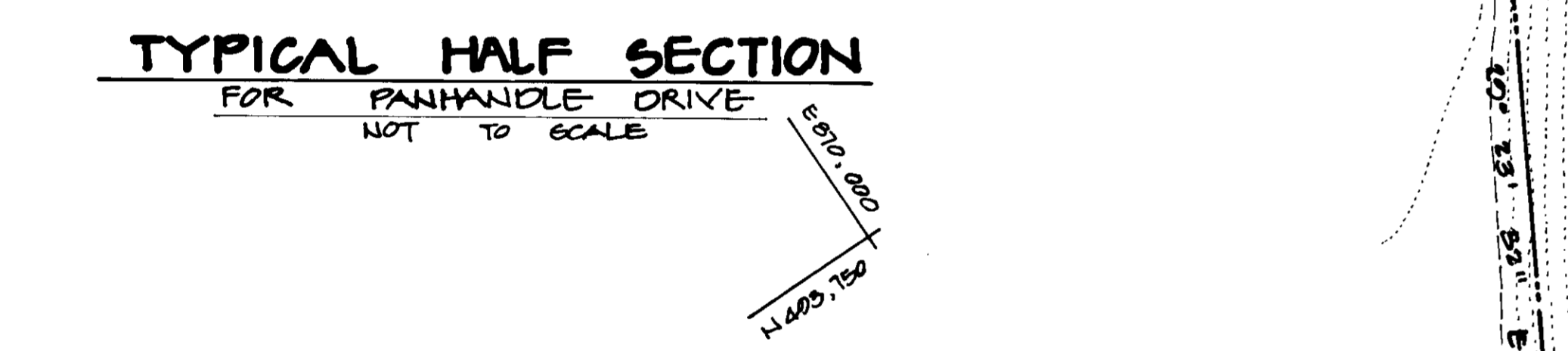
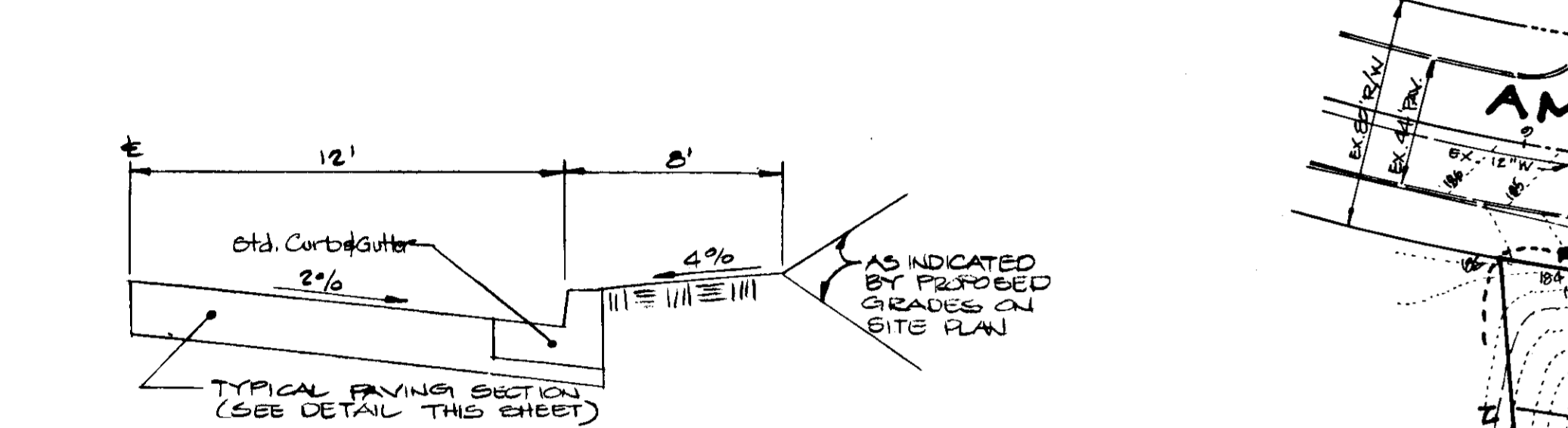
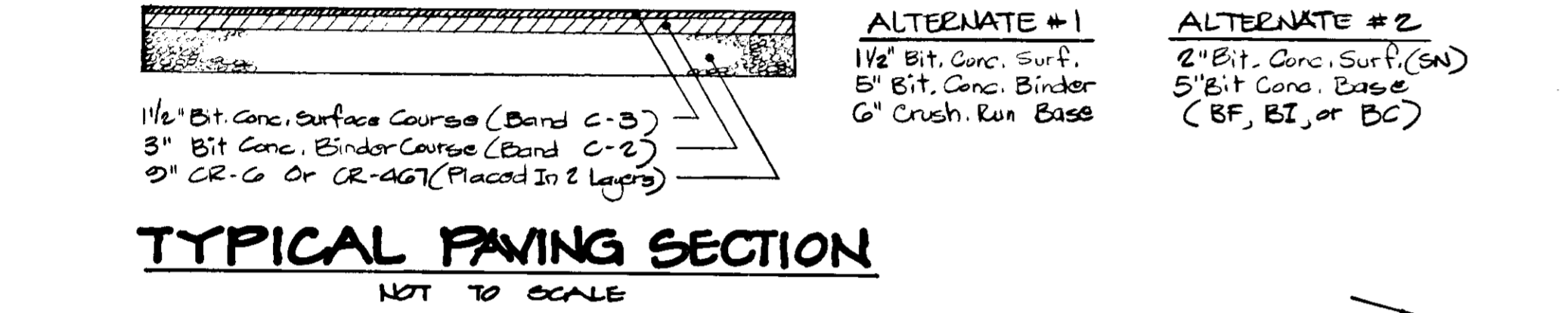
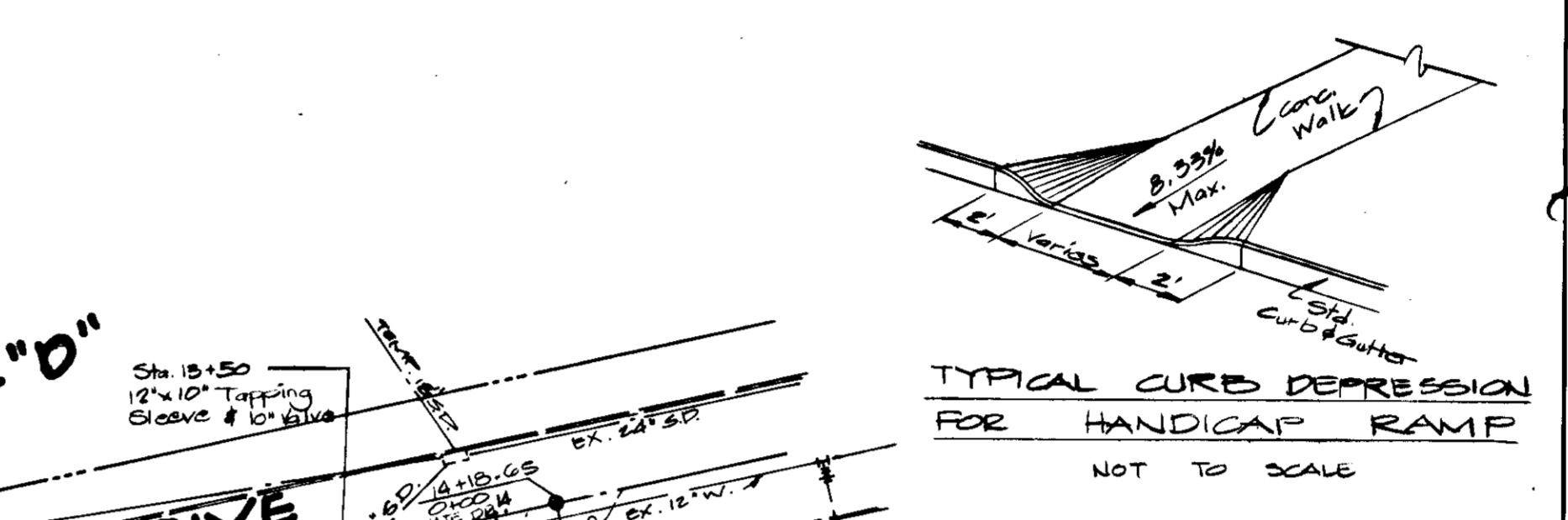
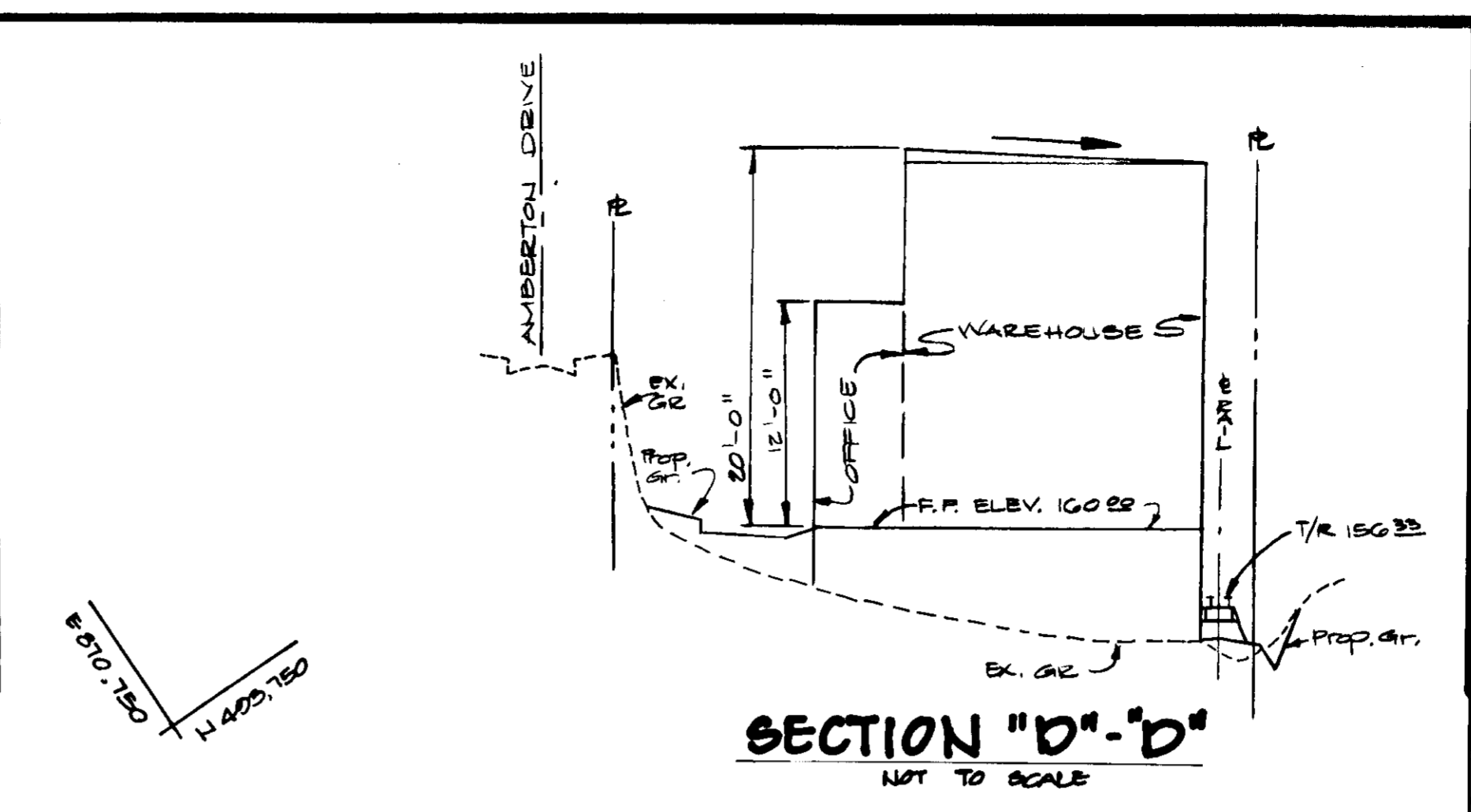
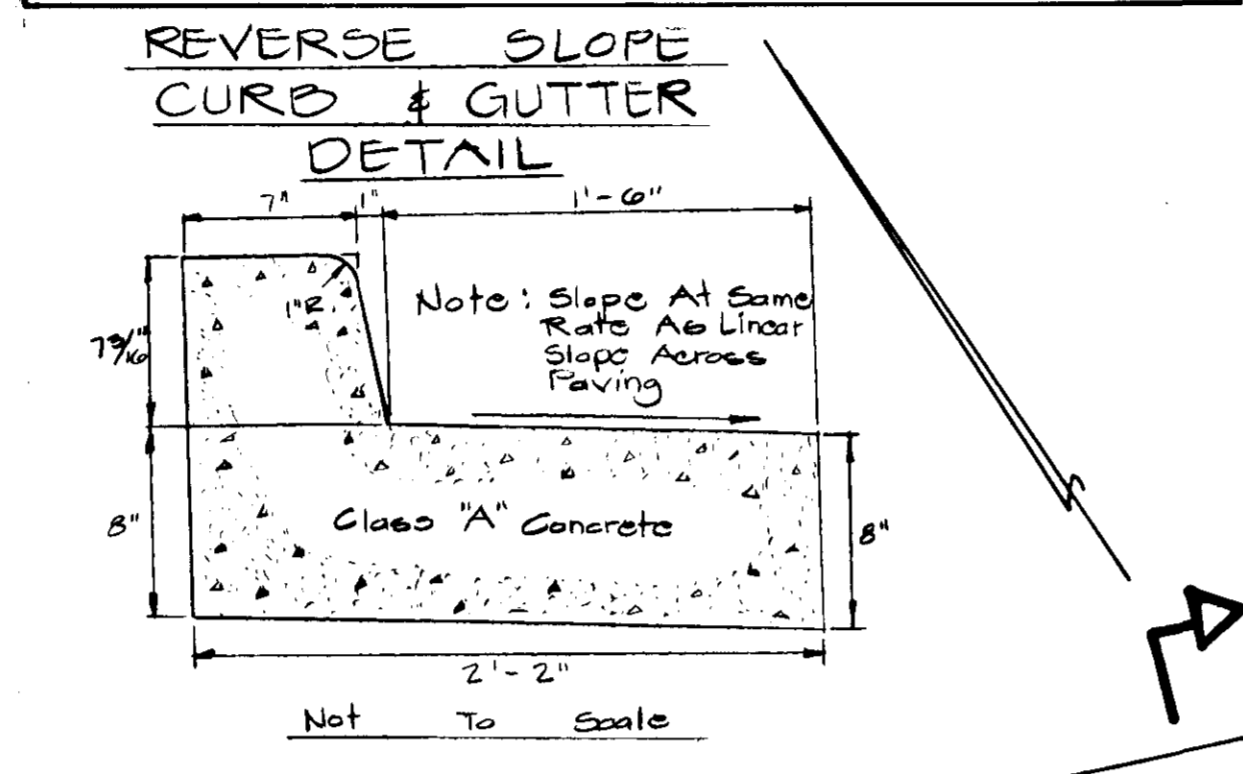
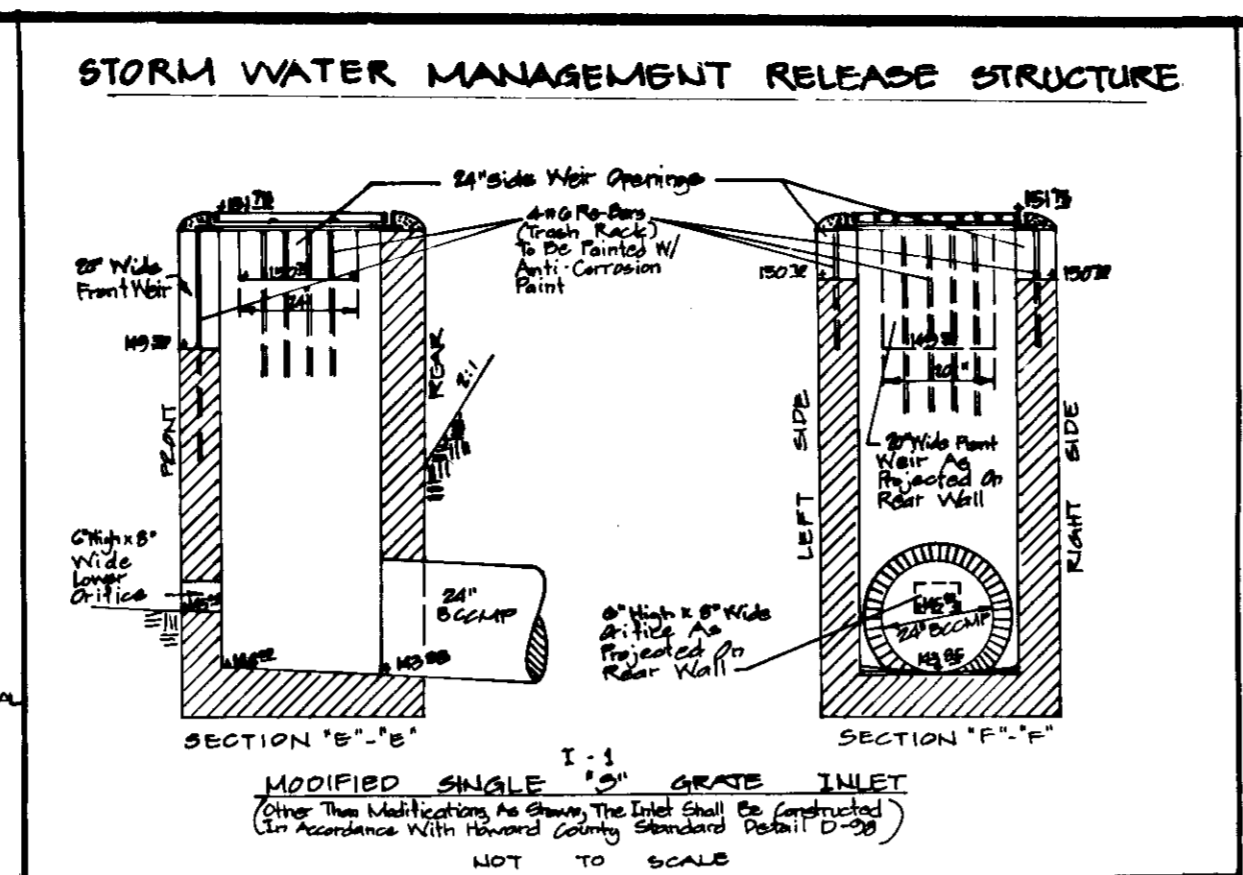


### SITE DATA

	PROPOSED	FUTURE	TOTAL
AREA OF TRACT	5.04 Acs	No Additional	5.04 Acs
AREA OF SUBMITTAL	5.04 Acs ± Rights 0.86 Acs Off Site		
AREA OF DISTURBANCE	5.00 Acs		
AREA TO BE VEGETATIVELY STABILIZED	0.00 Acs		
TOTAL FLOOR AREA	91,000 SF ± 1.20 Acs 28% of Entire Site	30,000 SF ± 0.40 Acs 14% of Entire Site	91,000 SF ± 1.07 Acs ± 42% of Entire Site
TOTAL NUMBER OF EMPLOYEES	12 - Office 16 - Warehouse = 28	0 - Office 8 - Warehouse = 8	30
BUILDING USE	5,000 SF Office 50,000 SF Warehouse 20,000 SF Warehouse 1/2 Employee Warehouse (1 Handicap Rm / 0-25 Pk.)	0 SF Office 30,000 SF Warehouse 4 @ 1/2 Employee Warehouse (1 Handicap Rm / 0-25 Pk.)	5,000 SF Office 80,000 SF Warehouse No Outside Storage
PARKING SPACES REQUIRED	24 @ 10' x 20' = 24 2 @ 12' x 20' = 2	0 @ 10' x 20' 0 @ 12' x 20'	24 @ 10' x 20' 2 @ 12' x 20'
PARKING SPACES PROVIDED	22 @ 10' x 20' = 22 2 @ 12' x 20' = 2	0 @ 10' x 20' 0 @ 12' x 20'	20 @ 10' x 20' 2 @ 12' x 20'
% BLDG COVERAGE INCLUDING PAVING	40%	21%	61%
% OPEN SPACE	60%	-	39%
EXISTING ZONING	M-2	M-2	M-2
TAX MAP NUMBER	57	57	57
TITLE REFERENCE	--- RECORD PLAT # 4338 ; F-79-201 ---		



APPROVED FOR PUBLIC WATER AND PUBLIC SEWERAGE SYSTEM  
HOWARD COUNTY HEALTH DEPARTMENT

*John G. Adams* 12-7-79  
COUNTY HEALTH OFFICER

*Thomas J. Davis* 12-7-79  
PLANNING DIRECTOR

*John W. Muschman* 12-7-79  
CHIEF OF LAND DEVELOPMENT

APPROVED FOR PUBLIC WATER, PUBLIC SEWERAGE, AND STORM DRAINAGE SYSTEMS AND ROADS  
HOWARD COUNTY DEPARTMENT OF PUBLIC WORKS

*John F. Newmyer* 12-3-79  
DIRECTOR

*W. O. Feltner* 12-3-79  
CHIEF OF BUREAU OF ENGINEERING

HOWARD SOIL CONSERVATION DISTRICT  
THIS DEVELOPMENT PLAN IS APPROVED FOR SOIL EROSION AND SEDIMENT CONTROL BY THE HOWARD SOIL CONSERVATION DISTRICT

*Robert Zichow* 11/24/79  
APPROVED FOR HOWARD SOIL CONSERVATION DISTRICT

*J. Helms* 11/24/79  
SIGNATURE THE UNITED STATES SOIL CONSERVATION DISTRICT

### LEGEND

- INDICATES PROPOSED BITUMINOUS PAVING (SEE TYPICAL PAVING SECTION THIS SHEET)
- INDICATES CONCRETE SIDE WALKS (AS SPECIFIED BY THE ARCHITECT)
- INDICATES PARKING SPACES RESERVED FOR THE HANDICAPPED AND THE AGED
- INDICATES STANDARD CURB & GUTTER (HOWARD COUNTY STD. D-40 ; PAGE 25)
- INDICATES REVERSE SLOPE CURB & GUTTER (SEE DETAIL THIS SHEET)
- INDICATES TEMPORARY BITUMINOUS MOUNTABLE CURBS (HOWARD COUNTY STD. D-30 ; PAGE 24)
- INDICATES PROPOSED CONTOURS
- INDICATES EXISTING CONTOURS
- INDICATES FUTURE CONTOURS

### APPROXIMATE GRADING QUANTITIES

TOTAL CUT	=	21,680 CY
FILL	=	9,800 CY
0% SHORTLAGE	=	280 CY
TOTAL FILL	=	10,780 CY
EXCESS	=	10,000 CY

APPROVED  
DIVISION OF LAND DEVELOPMENT

HOWARD COUNTY, MARYLAND  
DATE 11-7-79

*AM*

**GEORGE WILLIAM STEPHENS, JR.**  
+ ASSOCIATES INC.  
ENGINEERS & SURVEYORS  
303 ALLEGHENY AVENUE  
TOWSON, MARYLAND, 21204

ENGINEER:  
*Tadepata Chakrabarti* 8930 9/12/79  
TADOPATA CHAKRABARTI REG. NO. DATE

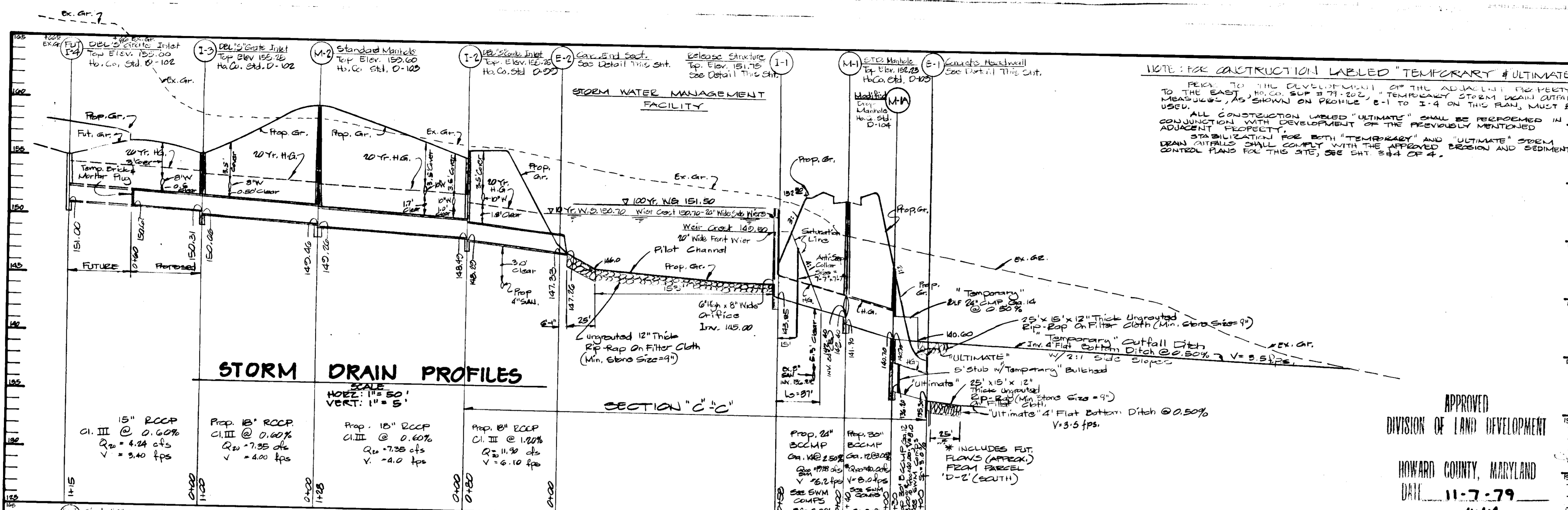
OWNER/DEVELOPER  
**SEVENTH-DAY ADVENTISTS**  
GENERAL CONFERENCE  
6840 EASTERN AVENUE  
NORTHWEST  
WASHINGTON, D.C., 20012

DEVELOPER:  
*Rev. Frank Jones* 9-13-79  
REV. FRANK JONES DATE

DESIGN BY: T.C.  
DRAWN BY: R.W.K.  
CHECKED BY: T.C.  
PROJECT NO. 4175

**SITE FOR PLAN**  
**SEVENTH-DAY ADVENTISTS**  
**WAREHOUSE**  
ROUTE ONE HUNDRED BUSINESS PARK  
HOWARD COUNTY, MARYLAND  
SCALE: 1" = 50'  
FIRST PUBLICATION DISTRICT AUGUST 10, 1970  
SHEET 1 OF 5





APPROVED FOR PUBLIC WATER AND PUBLIC SEWERAGE SYSTEM  
 HOWARD COUNTY HEALTH DEPARTMENT

DATE 12-5-77

APPROVED FOR HOWARD COUNTY OFFICE OF PLANNING AND ZONING  
 DATE 12-7-79

APPROVED FOR PUBLIC WATER, PUBLIC SEWERAGE, AND STORM DRAINAGE SYSTEMS AND ROADS  
 HOWARD COUNTY DEPARTMENT OF PUBLIC WORKS

DATE 12-3-79

APPROVED FOR HOWARD COUNTY OFFICE OF ENGINEERING  
 DATE 12-3-79

HOWARD SOIL CONSERVATION DISTRICT

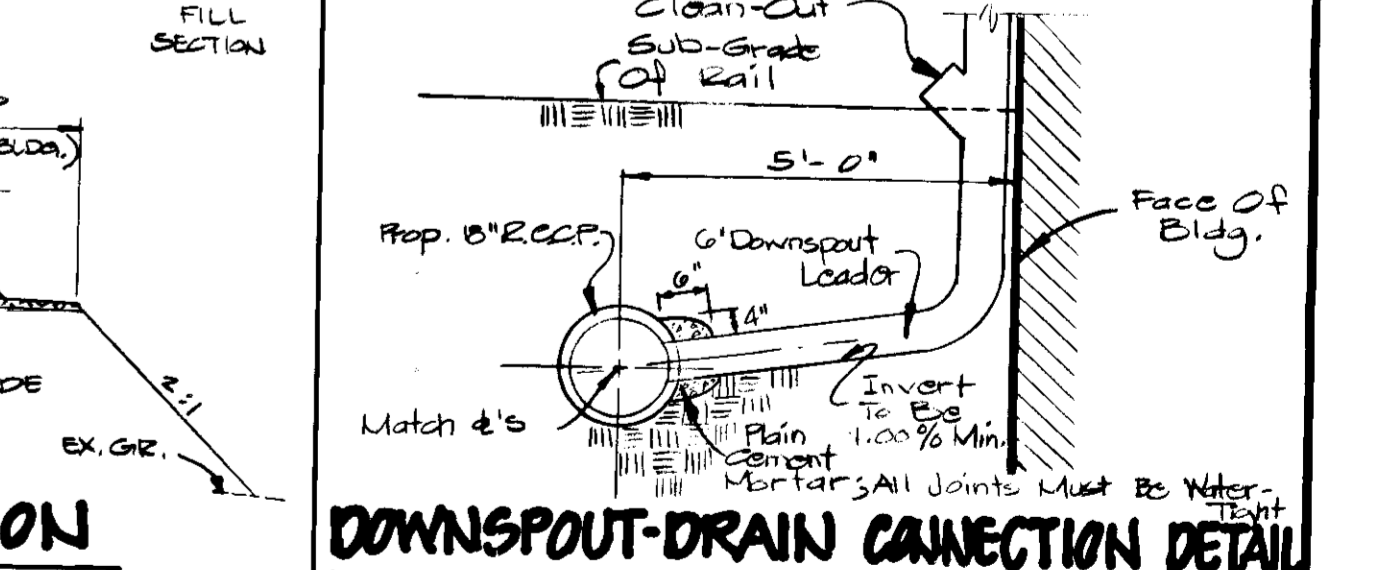
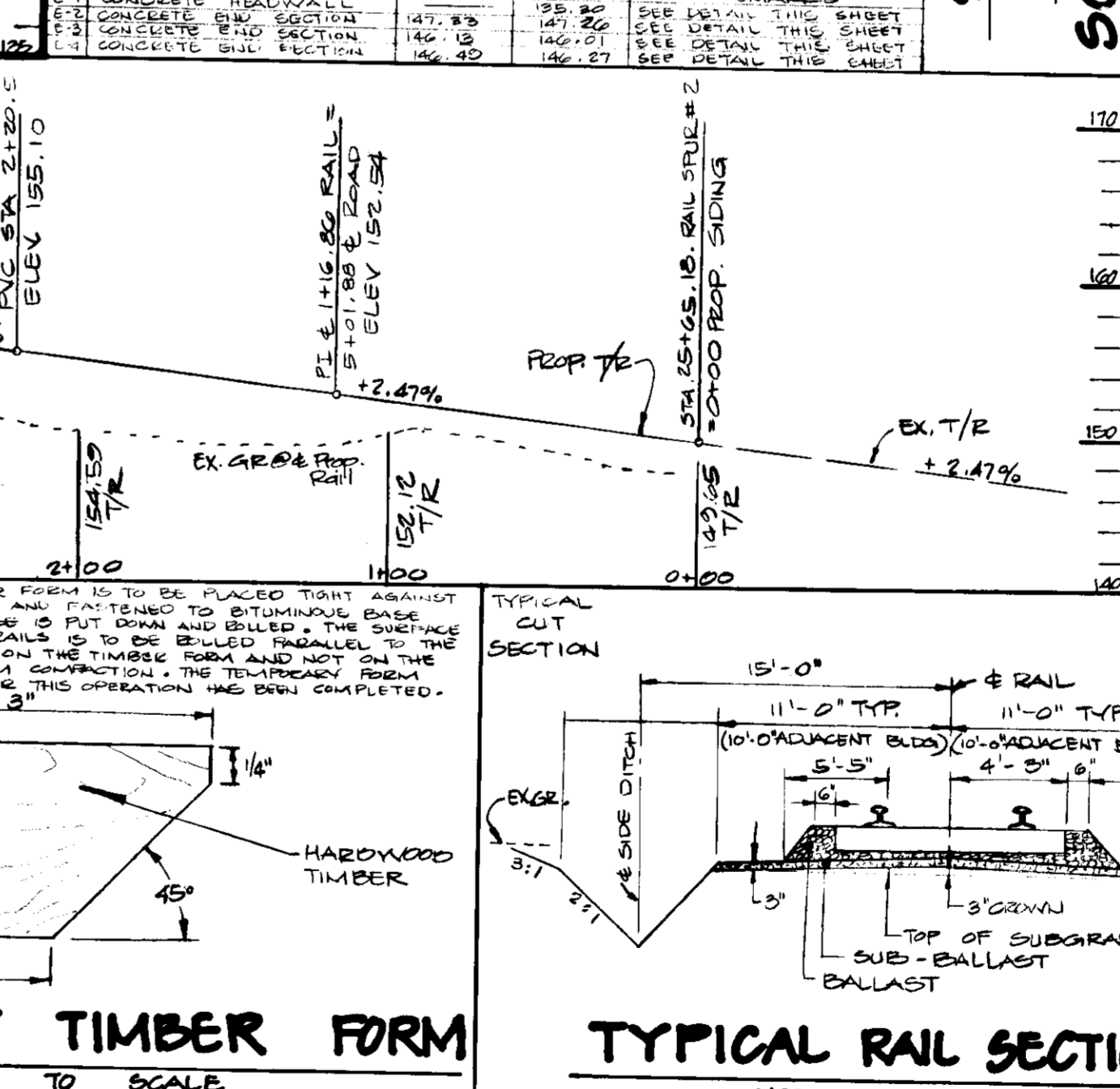
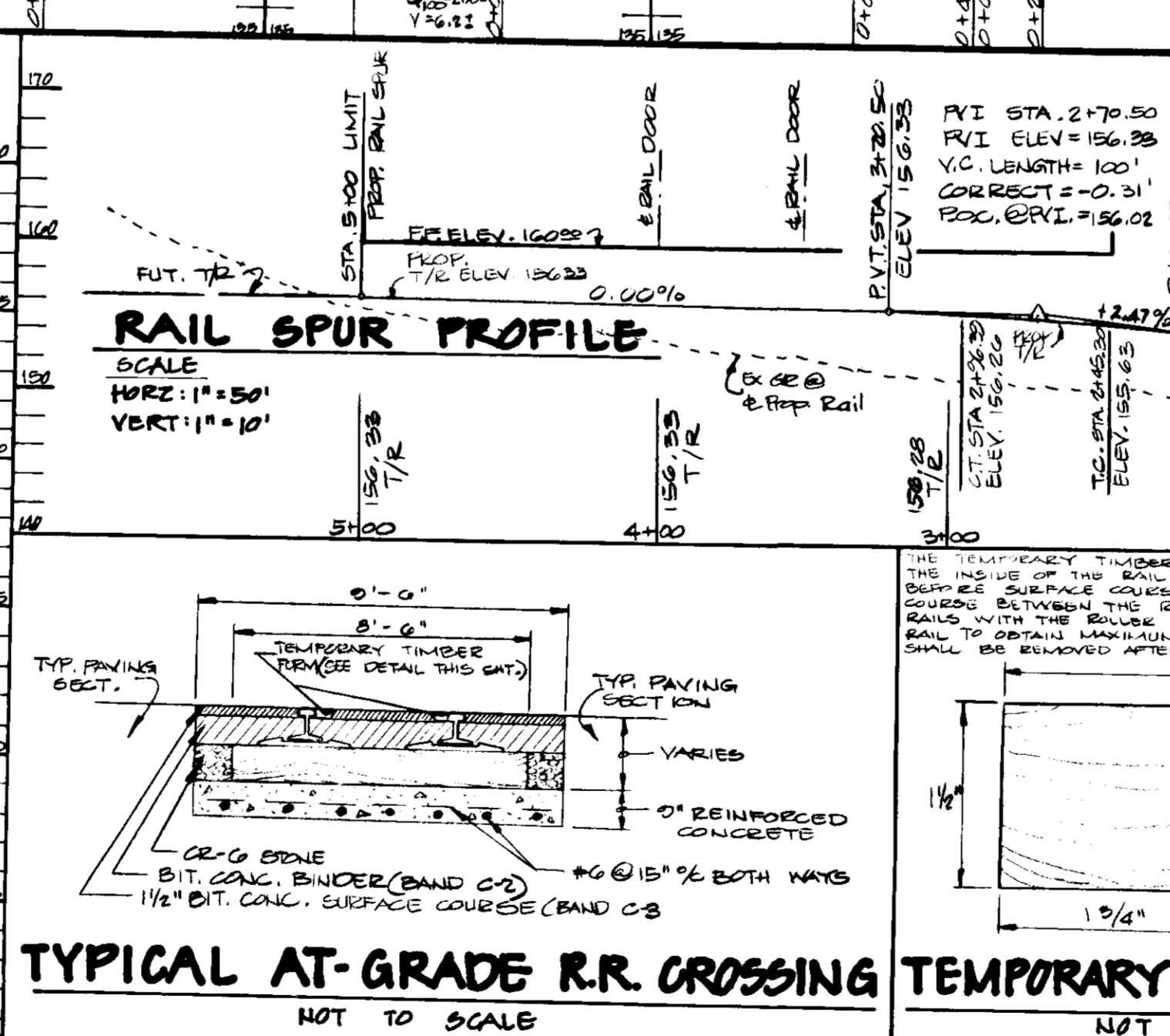
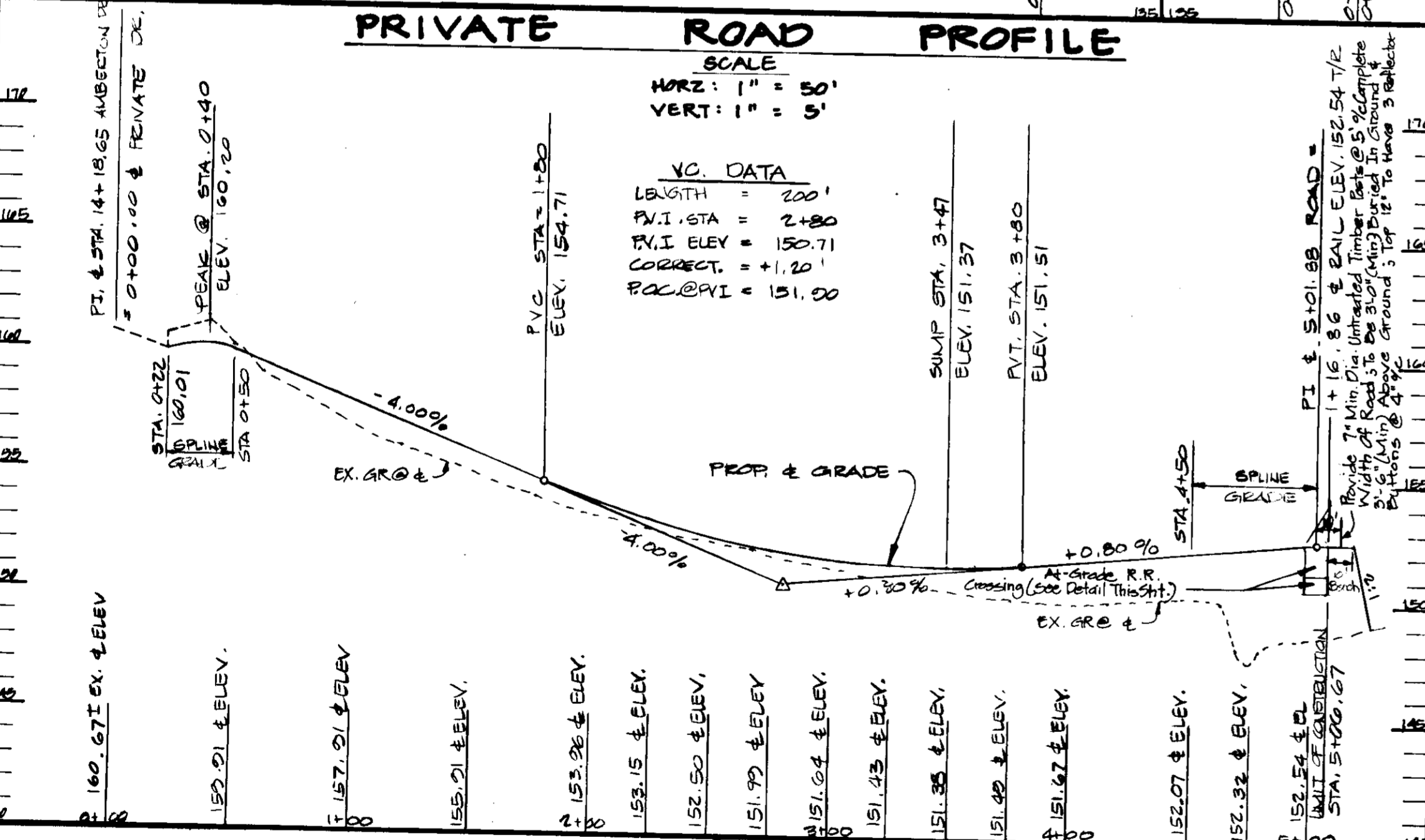
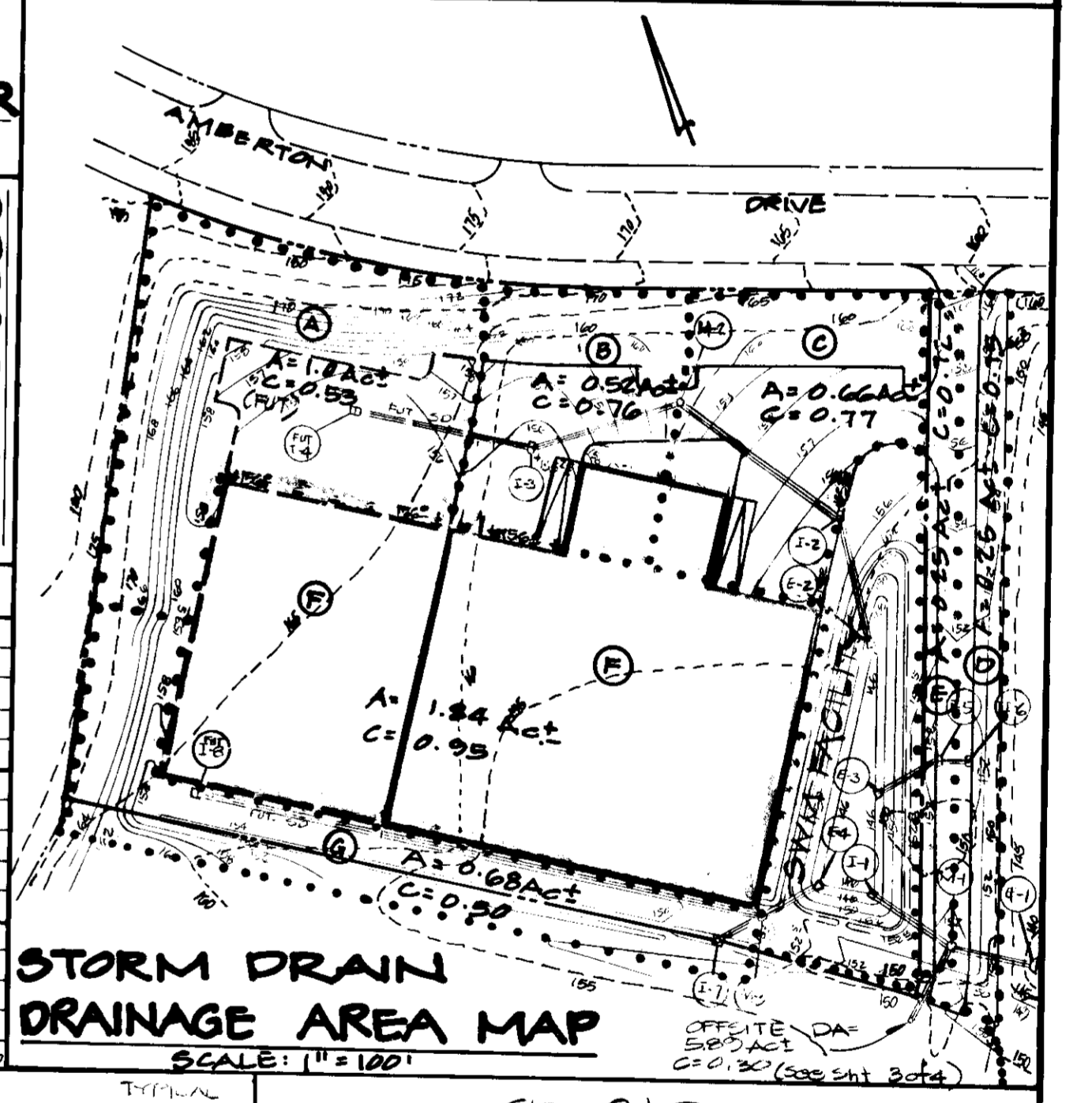
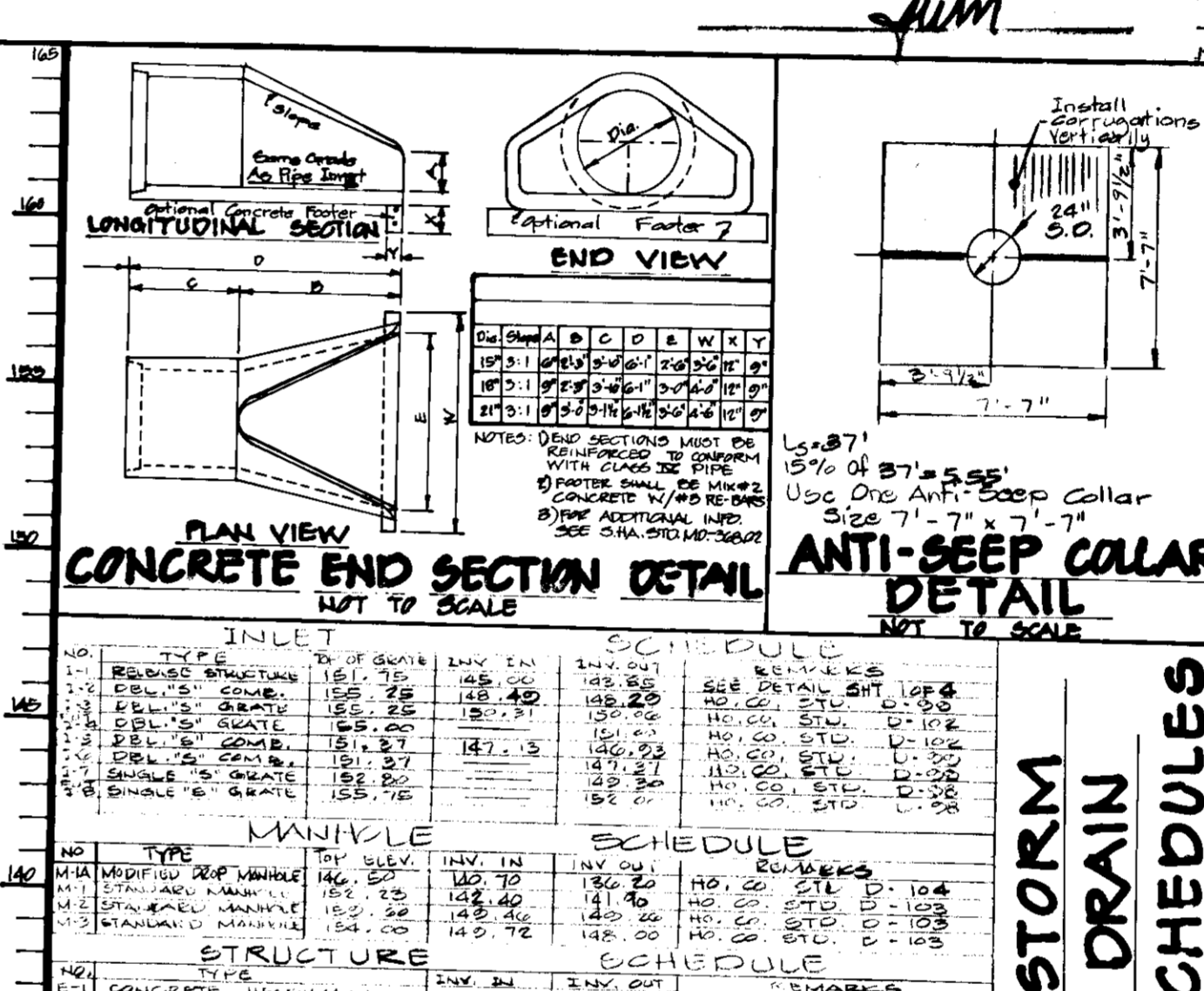
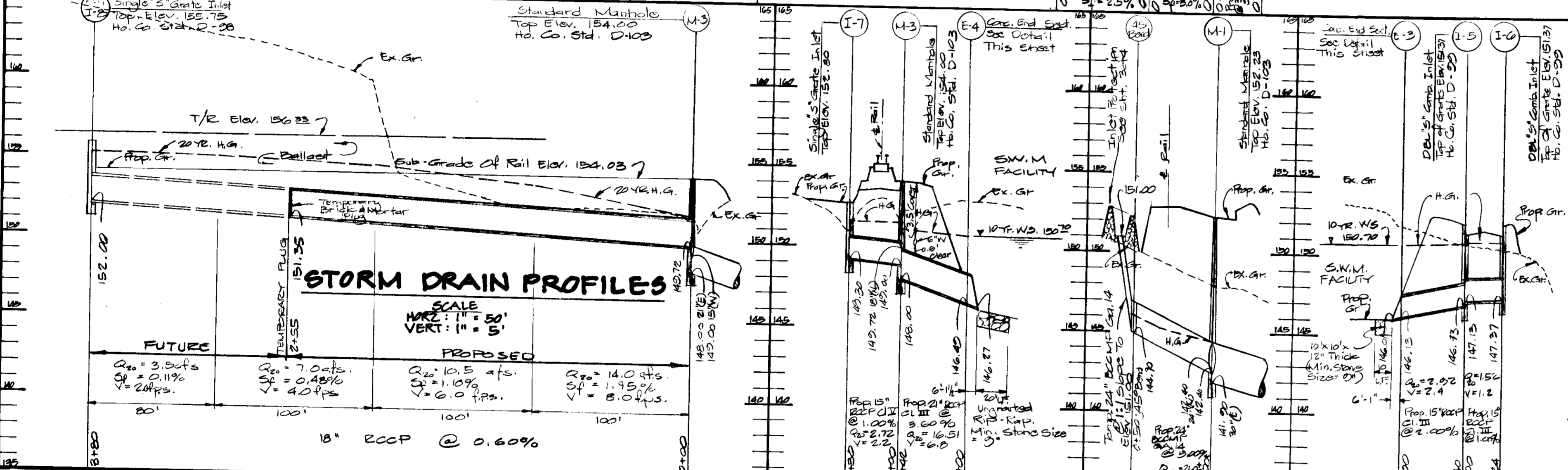
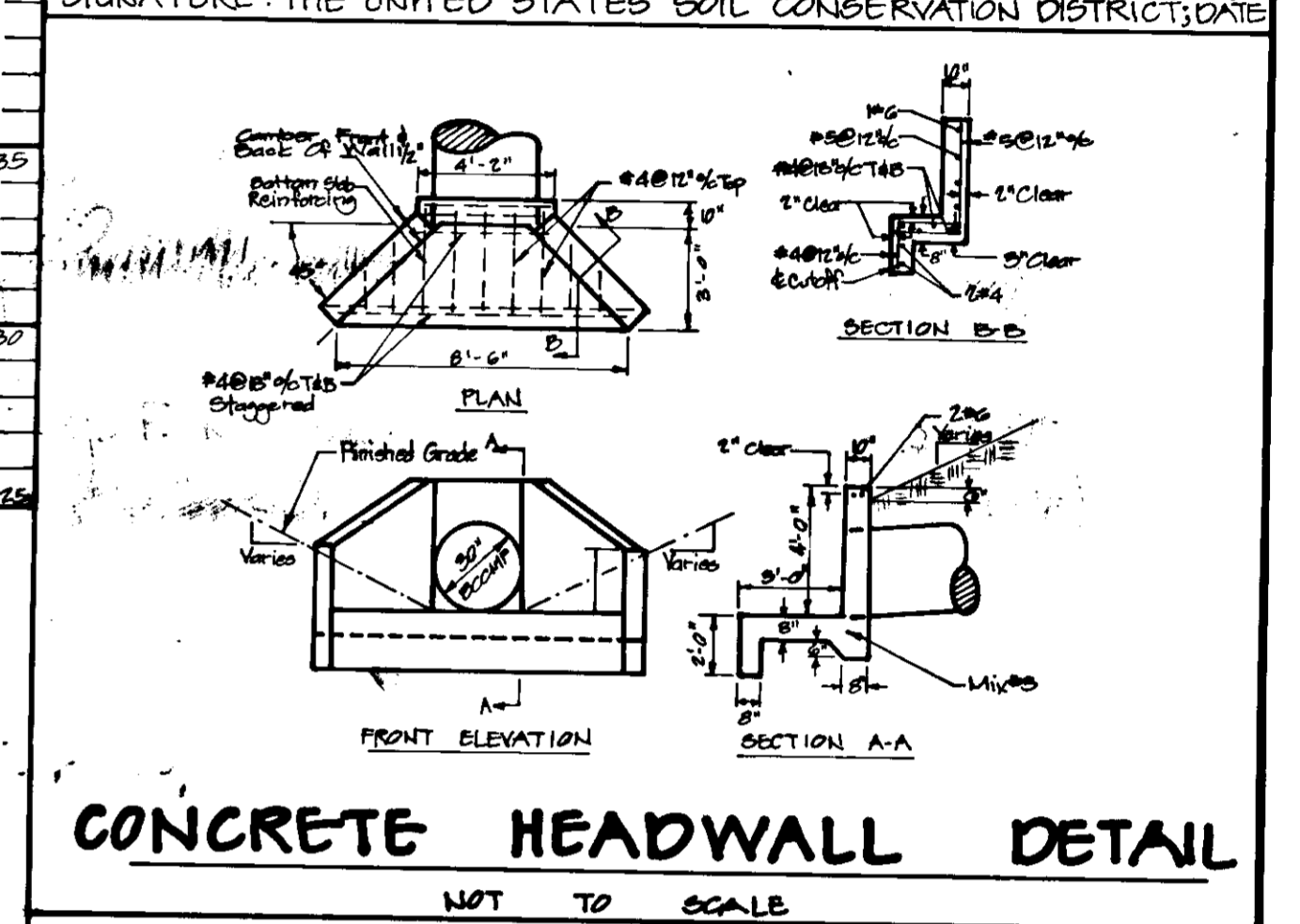
THIS DEVELOPMENT PLAN IS APPROVED FOR SOIL EROSION AND SEDIMENT CONTROL BY THE HOWARD SOIL CONSERVATION DISTRICT

DATE 11-24-79

APPROVED FOR HOWARD SOIL CONSERVATION DISTRICT AND MEETS TECHNICAL REQUIREMENTS

DATE 11-24-79

SIGNATURE: THE UNITED STATES SOIL CONSERVATION DISTRICT



**GEORGE WILLIAM STEPHENS, JR.**  
 & ASSOCIATES INC.  
 ENGINEERS & SURVEYORS  
 303 ALLEGHENY AVENUE  
 TOWSON, MARYLAND, 21204

ENGINEER:  
 Tapobrata Chakrabarti  
 8930  
 REG. NO. DATE 9/12/79

OWNER/DEVELOPER  
**SEVENTH-DAY ADVENTISTS**  
 GENERAL CONFERENCE  
 6840 EASTERN AVENUE  
 NORTHWEST  
 WASHINGTON, D.C., 20012

DESIGN BY: T. C.  
 DRAWN BY: R.W.R.  
 CHECKED BY: T.C.  
 PROJECT NO. 4175

DEVELOPER:  
 Rev. Frank Jones 9-13-79  
 DATE

DESIGN BY: T. C.  
 DRAWN BY: R.W.R.  
 CHECKED BY: T.C.  
 PROJECT NO. 4175

REVISIONS

**PROFILES & DETAILS**  
**SEVENTH-DAY ADVENTISTS**  
**WAREHOUSE**  
 ROUTE ONE HUNDRED BUSINESS PARK  
 HOWARD COUNTY, MARYLAND  
 SCALE: 1" = AS SHOWN  
 FIRST ELECTION DISTRICT  
 AUGUST 10, 1979

SHEET 2 OF 5

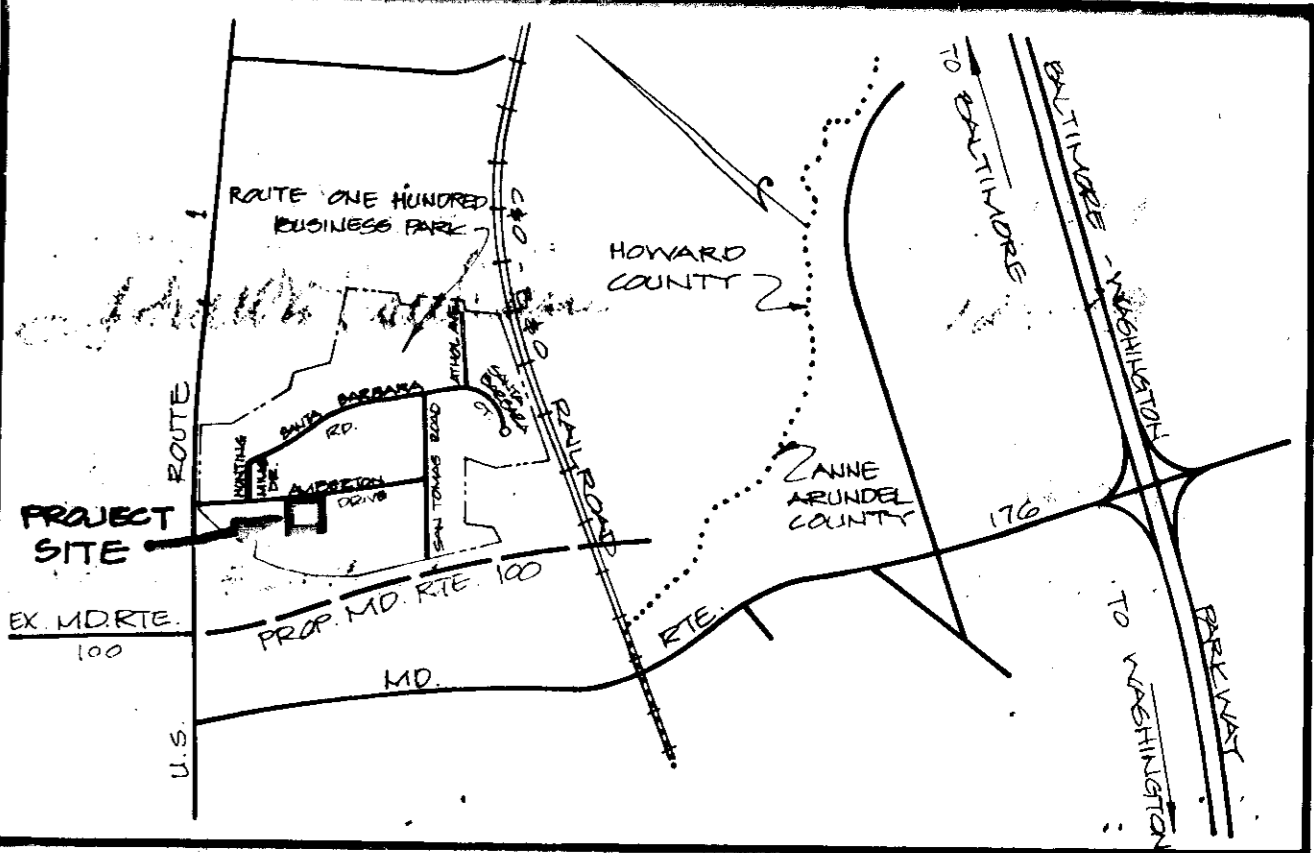


**SITE DATA**

	PROPOSED	FUTURE	TOTAL
AREA OF TRACT	5.04 AC	No Additional	5.04 AC
AREA OF SUBMITTAL	5.04 AC ± Onsite 0.26 AC ± Offsite		
AREA OF DISTURBANCE	5.60 AC		
AREA TO BE VEGETATIVELY STABILIZED	3.00 AC		
TOTAL FLOOR AREA	61,000 SF ± 1.80 AC 25% of Entire Site	20,000 SF ± 0.60 AC 14% of Entire Site	81,000 SF ± 2.40 AC 42% of Entire Site
TOTAL NUMBER OF EMPLOYEES	12 - Office 16 - Warehouse = 28	0 - Office 8 - Warehouse = 8	36
BUILDING USE	5,000 SF Office 50,000 SF Warehouse	0 - Office 20,000 SF Warehouse	5,000 SF Office 80,000 SF Warehouse
PARKING SPACES REQUIRED	12 @ 10' x 20' Office 16 @ 10' x 20' Warehouse (1 Handicap Pk/0-25 Ps.)	4 @ 1/2 Employees Warehouse (1 Handicap Pk/0-25 Ps.)	24 @ 10' x 20' Office 2 @ 12' x 20' Office 20 @ 10' x 20' Warehouse
PARKING SPACES PROVIDED	22 @ 10' x 20' = 24 2 @ 12' x 20'	6 @ 10' x 20' 0 @ 12' x 20'	30 @ 10' x 20' 2 @ 12' x 20'
% BLDG COVERAGE INCLUDING PAVING	40%	21%	61%
% OPEN SPACE	60%	-	39%
EXISTING ZONING	M-2	M-2	M-2
TAX MAP NUMBER	81	37	37
TITLE REFERENCE	RECORD PLAT # 4338 S.F. 79-201		

**CONSTRUCTION SEQUENCE**

1. NOTIFY HOWARD COUNTY DEPARTMENT OF INSPECTIONS AND PERMITS INSPECTOR PRIOR TO STARTING ANY WORK.
2. INSTALL STABILIZED CONSTRUCTION ENTRANCE.
3. INSTALL DIVERSION DITCH DD-1 & STORM DRAIN SBD-1.
4. INSTALL DRAIN SYSTEM I-5 TO E-3, & I-1 TO M-1A, & TEMPORARILY 2" OUTFALL PIPE.
5. CONSTRUCT SEDIMENT BASIN & TEMPORARY OUTFALL DITCH & STABILIZE ACCORDING TO GEN. NOTE #8.
6. STABILIZE ALL DISTURBED AREAS OUTSIDE OF BLDG. & PAVING AREAS WITH 4" TOPSOIL, SEED, & MULCH.
7. INSTALL REMAINING DRAIN SYSTEMS, UTILITIES, THEN PAVE SUB-BASE MATERIALS ON PARKING, DRIVE, & BLDG. AREAS AS SOON AS FEASIBLE.
8. COMPLETE ALL BLDG. CONSTRUCTION AND FINISH, THEN STABILIZE ALL DISTURBED AREAS OUTSIDE OF BLDG. & PAVING AREAS WITH 4" TOPSOIL, SEED, & MULCH.
9. REMOVE TEMPORARY SEDIMENT CONTROL MEASURES AND STABILIZE THOSE AREAS AFTER OBTAINING PERMISSION FROM THE SEDIMENT CONTROL INSPECTOR.
10. CLEAN OUT SEDIMENT BASIN, INSTALL PILOT CHANNEL, & STABILIZE ALL HEALTH COLLECTORS BEFORE CONVERTING IT TO STORM WATER MANAGEMENT; STABILIZE ACCORDING TO GEN. NOTE #8.
11. REMOVE TEMPORARILY PLUS FROM LOWER OFFICE OF I-1.



**VICINITY MAP**

SCALE: 1" = 2000'

APPROVED FOR PUBLIC WATER AND PUBLIC SEWERAGE SYSTEM  
HOWARD COUNTY HEALTH DEPARTMENT

*John Palmer* 12-5-79 DATE  
CHIEF OF HEALTH OFFICE

APPROVED FOR HOWARD COUNTY OFFICE OF PLANNING AND ZONING  
*James J. ...* 12-7-79 DATE  
PLANNING DIRECTOR

*John ...* 12-7-79 DATE  
CHIEF OF LAND DEVELOPMENT

APPROVED FOR PUBLIC WATER, PUBLIC SEWERAGE, AND STORM DRAINAGE SYSTEMS AND ROADS  
HOWARD COUNTY DEPARTMENT OF PUBLIC WORKS

*John ...* 12-3-79 DATE  
DIRECTOR

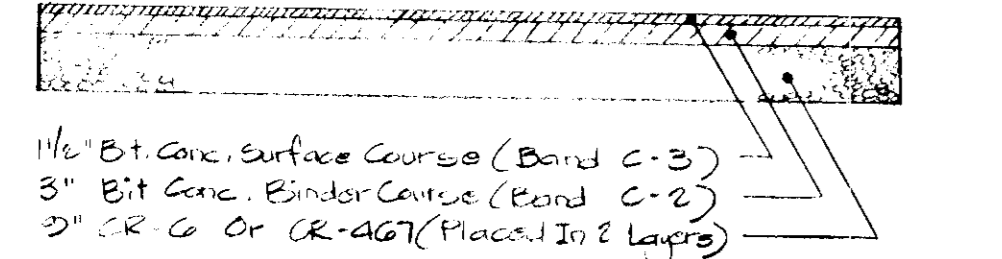
*W.O. ...* 12-3-79 DATE  
CHIEF OF BUREAU OF ENGINEERING

**HOWARD SOIL CONSERVATION DISTRICT**  
THIS DEVELOPMENT PLAN IS APPROVED FOR SOIL EROSION AND SEDIMENT CONTROL BY THE HOWARD SOIL CONSERVATION DISTRICT.

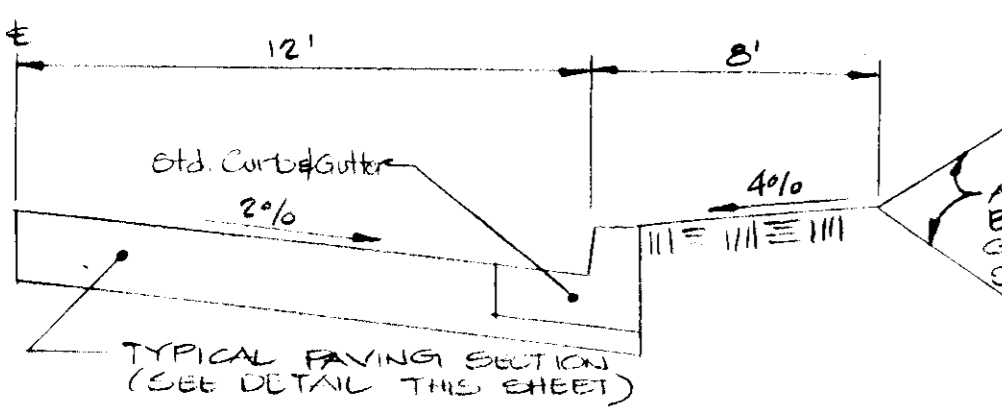
*Charles ...* 11-24-79 DATE  
APPROVED FOR HOWARD SOIL CONSERVATION DISTRICT

REVIEWED FOR THE HOWARD SOIL CONSERVATION DISTRICT AND MEETS TECHNICAL REQUIREMENTS

*J. Helm* 11-24-79 DATE  
SIGNATURE THE UNITED STATES SOIL CONSERVATION DISTRICT



**TYPICAL PAVING SECTION**  
NOT TO SCALE

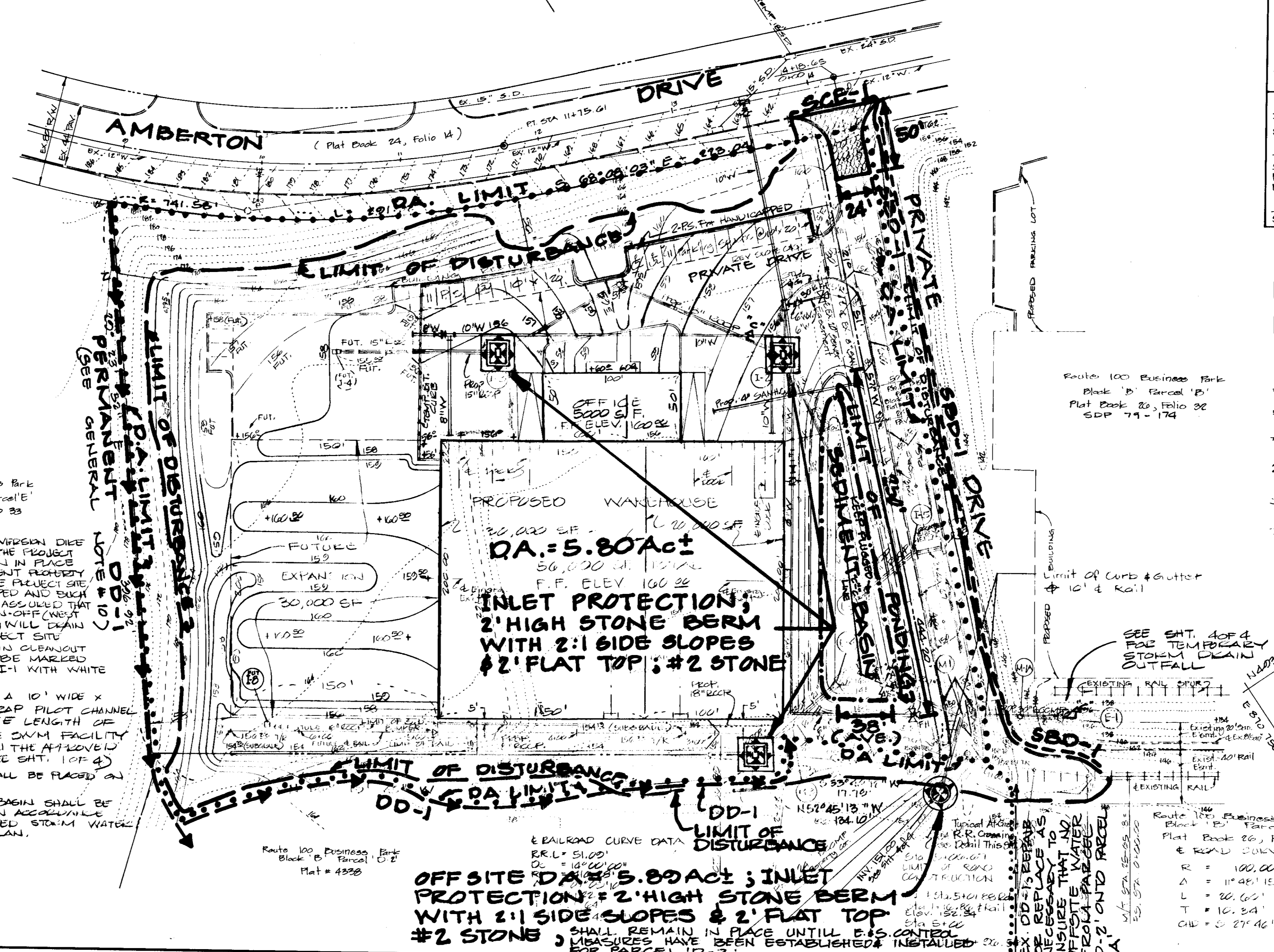


**TYPICAL HALF SECTION**  
FOR PANHANDLE DRIVE  
NOT TO SCALE

**GENERAL NOTES**

- EROSION & SEDIMENT CONTROL**
1. SUITABLE MATERIAL SHALL BE USED FOR FILL AND ROLLED TO A MINIMUM DEGREE OF COMPACTION OF 95% OF THE DRY UNIT WEIGHT AS DETERMINED BY ASTM # 6008. ALL SUBBASES SHALL BE COMPACTED TO THE SAME DEGREE.
  2. CONTRACTOR TO PLACE 2" TOPSOIL THEN SEED AND MULCH ALL DISTURBED AREAS WITHIN 14 DAYS AS FINAL GRADING HAS BEEN COMPLETED.
  3. ALL WORK TO BE DONE IN ACCORDANCE WITH THE "STANDARDS AND SPECIFICATIONS FOR THE SOIL AND SEDIMENT CONTROL" IN DEVELOPING AREAS, JULY 1978.
  4. THE CONTRACTOR IS TO TAKE CARE AT ALL TIMES DURING CONSTRUCTION TO PREVENT SEDIMENT DAMAGE TO ADJACENT PROPERTIES AND/OIL EATING OF ROADWAYS.
  5. DURING THE LIMIT OF SEDIMENT CONTROL PRACTICES REQUIRED BY THIS PLAN, MINOR FIELD ADJUSTMENTS CAN AND WILL BE MADE TO ACCURE THE ADJECENT AND CONTROL OF ANY SEDIMENT BEFORE IT LEAVED THE CONSTRUCTION SITE. CHANGES TO SEDIMENT CONTROL PRACTICES AS ESTABLISHED BY THIS PLAN REQUIRE PRIOR APPROVAL OF THE SEDIMENT CONTROL INSPECTOR AND THE HOWARD COUNTY SOIL CONSERVATION DISTRICT.
  6. AT THE END OF EACH WORKING DAY ALL SEDIMENT CONTROL PRACTICES WILL BE INSPECTED AND LEFT IN AN OPERATIONAL CONDITION.
  7. TEMPORARY DRAINAGE SHALL BE PROVIDED TO AVOID FLOODING OF WATER.
  8. PERMANENT SEEDING SPECIFICATION: SEED SHALL BE KENTUCKY 31 TALL FESCUE APPLIED AT A RATE OF 50/1000 SF. LIME SHALL BE APPLIED AT A RATE OF 2.75/1000 SF. COMMERCIAL FERTILIZER (10-10-20) AT A RATE OF 30/1000 SF. UNIFORMLY MULCH AREAS WITH UNWEATHERED SMALL STRAW (PREFERABLY WHEAT) AT A RATE OF 1 1/2 T./AC. AND AREAS WITH ASPHALT THE DRAIN UNDER LIQUID ASPHALT SAND CURING (6-75) SHALL BE APPLIED AT A RATE OF 2.0 GAL/SY. UPPER END OF STORM DRAIN PIPE WILL BE FLUSHED AT THE END OF EACH WORKING DAY DURING CONSTRUCTION. (SEE DETAIL SHEET 404A)

10. THE PERMANENT DIVERSION DITCH TO THE WEST OF THE PROJECT SITE SHALL REMAIN IN PLACE UNTIL THE ADJACENT PROPERTY TO THE WEST OF THE PROJECT SITE HAS BEEN DEVELOPED AND SUCH DEVELOPER HAS ASSURED THAT NO OFF-SITE RUN-OFF (WEST OF PROJECT SITE) WILL DRAIN ON TO THE PROJECT SITE.
11. THE SEDIMENT BASIN CLEANOUT ELEVATION SHALL BE MARKED ON THE FACE OF I-1 WITH WHITE PAINT.
12. THERE SHALL BE A 10' WIDE X 12" THICK EIP-24 PILOT CHANNEL THE COMPLETE LENGTH OF THE LENGTH OF THE SWIM FACILITY AS SHOWN ON THE APPROVED SITE PLAN (SEE SHT. 10F-4).
13. ALL RIP-RAP SHALL BE PLACED ON FILTER CLOTH.
14. THE SEDIMENT BASIN SHALL BE CONSTRUCTED IN ACCORDANCE WITH THE APPROVED STORM WATER MANAGEMENT PLAN.



- LEGEND**
- INDICATES PROPOSED ENTRANCES (SEE TYPICAL PAVING SECTION THIS SHEET)
  - INDICATES CONCRETE SIDE WALKS (AS SPECIFIED BY THE ARCHITECT)
  - INDICATES PARKING SPACES LEVELLED FOR THE HANDICAPPED AND THE AGED
  - INDICATES STANDARD CURB & GUTTER (HOWARD COUNTY STD. D-40; PAGE 25)
  - INDICATES REVERSE SLOPE CURB & GUTTER (SEE DETAIL THIS SHEET)
  - INDICATES TEMPORARILY BITUMINOUS MOUNTABLE CURB (HOWARD COUNTY STD. D-30; PAGE 24)
  - INDICATES PROPOSED CONTOURS
  - INDICATES EXISTING CONTOURS
  - INDICATES FUTURE CONTOURS

**APPROXIMATE GRADING QUANTITIES**

TOTAL CUT	=	21,600 CY
FILL	=	2,820 CY
0% SHRINKAGE	=	580 CY
TOTAL FILL	=	10,780 CY
EXCESS	=	10,200 CY

**GEORGE WILLIAM STEPHENS, JR.**  
& ASSOCIATES INC.  
ENGINEERS & SURVEYORS  
303 ALLEGHENY AVENUE  
TOWSON, MARYLAND, 21204

**ENGINEER'S CERTIFICATE**

I HEREBY CERTIFY THAT THIS PLAN FOR EROSION & SEDIMENT CONTROL REPRESENTS A PRACTICAL AND WORKABLE PLAN, BASED ON MY PERSONAL KNOWLEDGE OF THE SITE CONDITIONS AND THAT IT WAS PREPARED IN ACCORDANCE WITH THE REQUIREMENTS OF THE HOWARD SOIL CONSERVATION DISTRICT.

*Subrata Chakrabarti* 8930 9/12/79  
TAPORATA CHAKRABARTI REG. NO. DATE

**OWNER/DEVELOPER**  
**SEVENTH-DAY ADVENTISTS**  
GENERAL CONFERENCE  
6840 EASTERN AVENUE  
NORTHWEST  
WASHINGTON, D.C., 20012

**DEVELOPER'S CERTIFICATE**

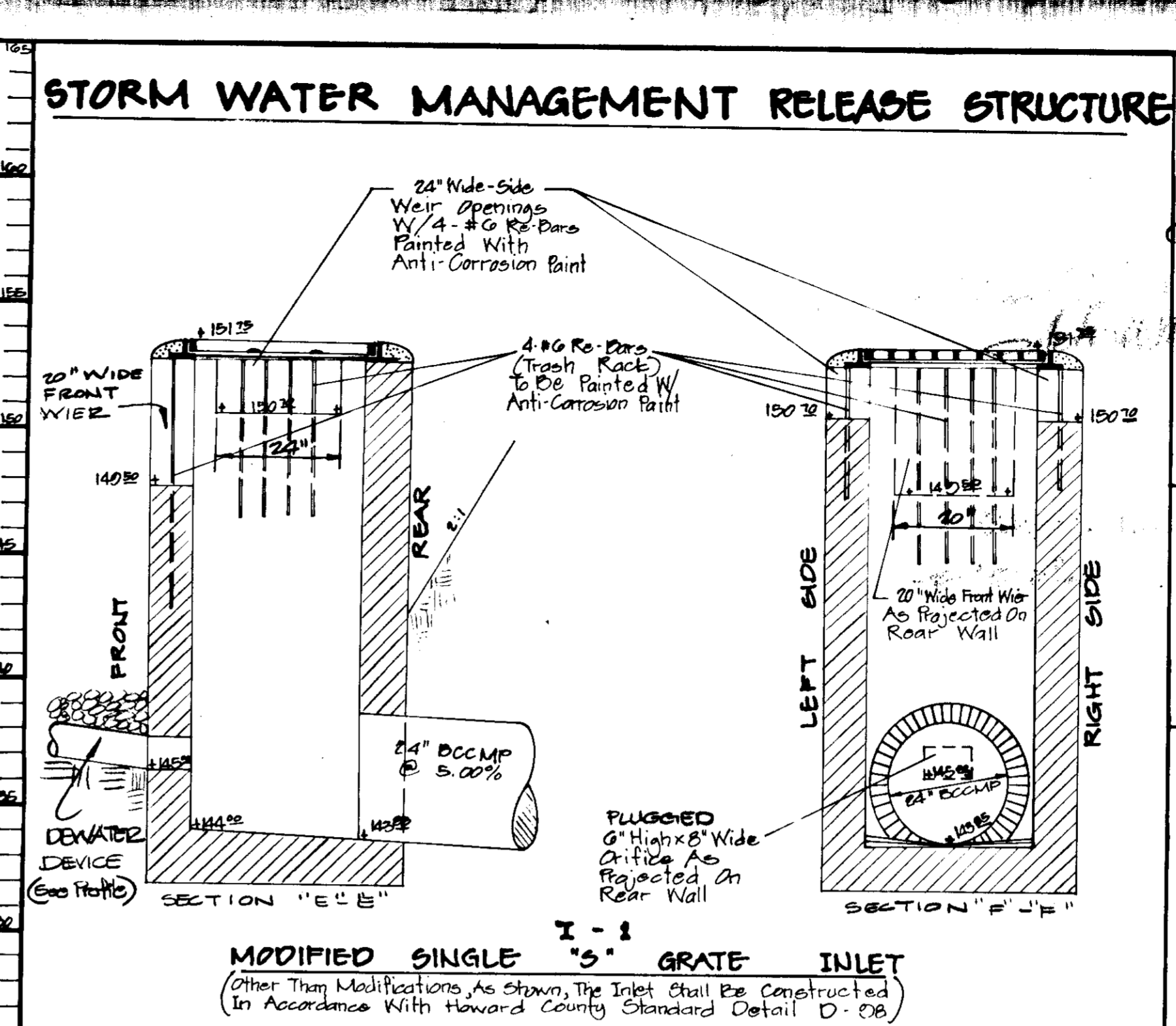
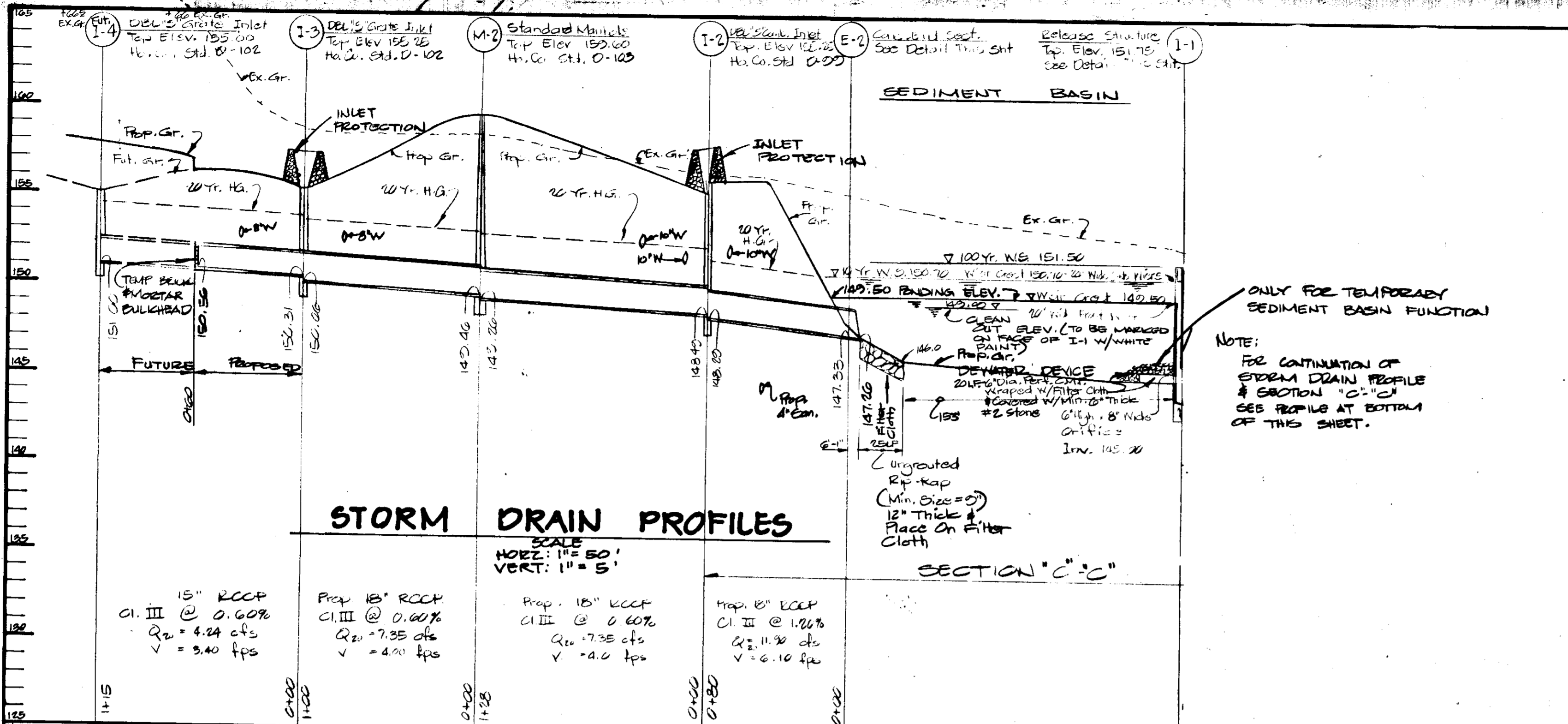
I HEREBY CERTIFY THAT ALL DEVELOPMENT AND CONSTRUCTION WILL BE DONE ACCORDING TO THIS PLAN OF DEVELOPMENT AND PLAN FOR EROSION AND SEDIMENT CONTROL AND I ALSO AUTHORIZE PERIODIC ON-SITE INSPECTION BY THE HOWARD SOIL CONSERVATION DISTRICT OR THEIR AUTHORIZED AGENTS AS ARE DEEMED NECESSARY.

*Rev. Frank Jones* 9-13-79  
REV. FRANK JONES DATE

DESIGN BY: T.C.  
DRAWN BY: RYK  
CHECKED BY: T.C.  
PROJECT NO. 4175  
REVISIONS  
DATE: 9-13-79  
NOTE # 8 & 9  
NOTE # 10 & 11  
DATE: 11-26-79

**EROSION & SEDIMENT CONTROL PLAN**  
**SEVENTH-DAY ADVENTISTS**  
**WAREHOUSE**  
ROUTE ONE HUNDRED BUSINESS PARK  
HOWARD COUNTY, MARYLAND  
SCALE: 1" = 50'  
FIRST ELECTION DISTRICT  
AUGUST 10, 1970  
SHEET 3 OF 5





APPROVED FOR PUBLIC WATER AND PUBLIC SEWERAGE SYSTEM HOWARD COUNTY HEALTH DEPARTMENT

DATE 12-5-79

COUNTY HEALTH OFFICER

APPROVED: HOWARD COUNTY OFFICE OF PLANNING AND ZONING

DATE 12-7-79

PLANNING DIRECTOR

APPROVED FOR PUBLIC WATER, PUBLIC SEWERAGE, AND STORM DRAINAGE SYSTEMS AND ROADS: HOWARD COUNTY DEPARTMENT OF PUBLIC WORKS

DATE 12-9-79

DIRECTOR

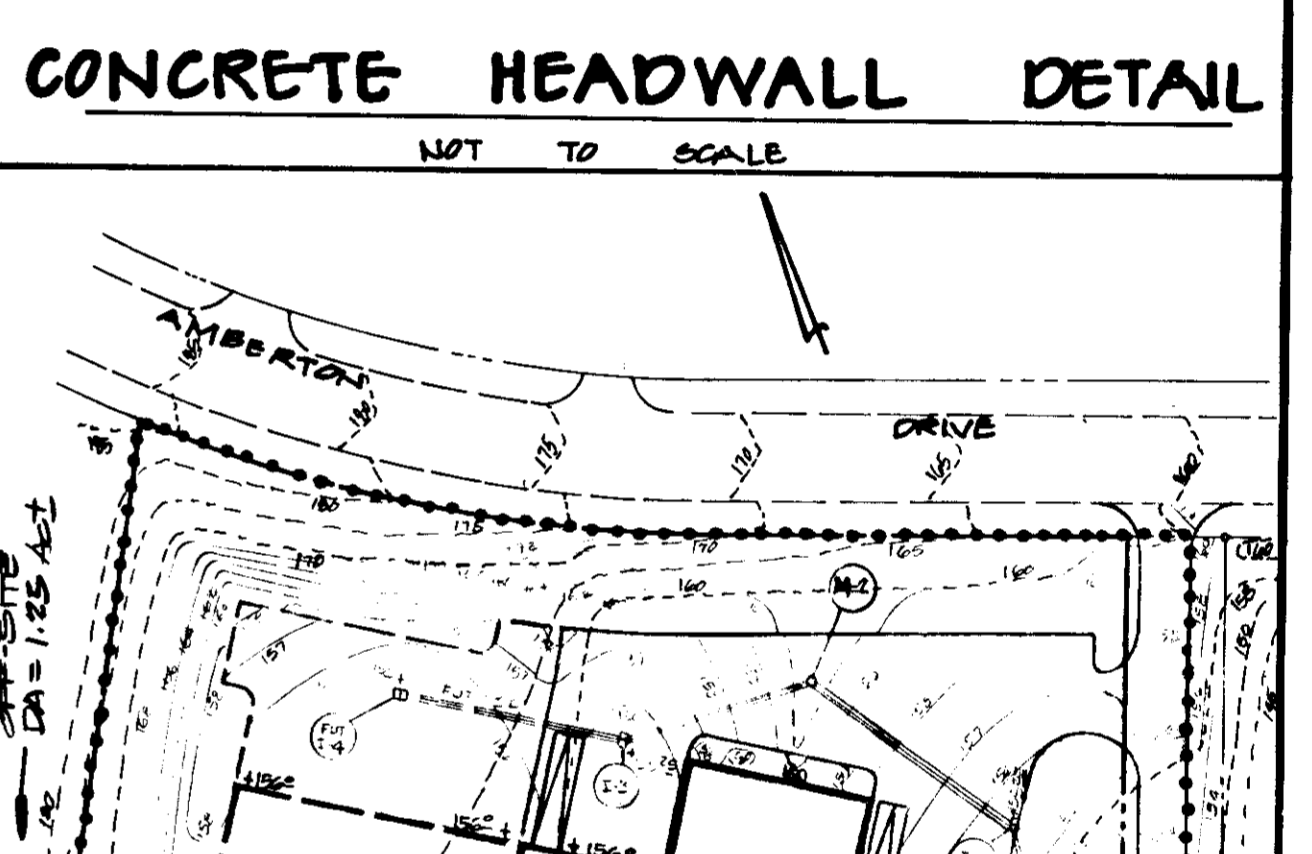
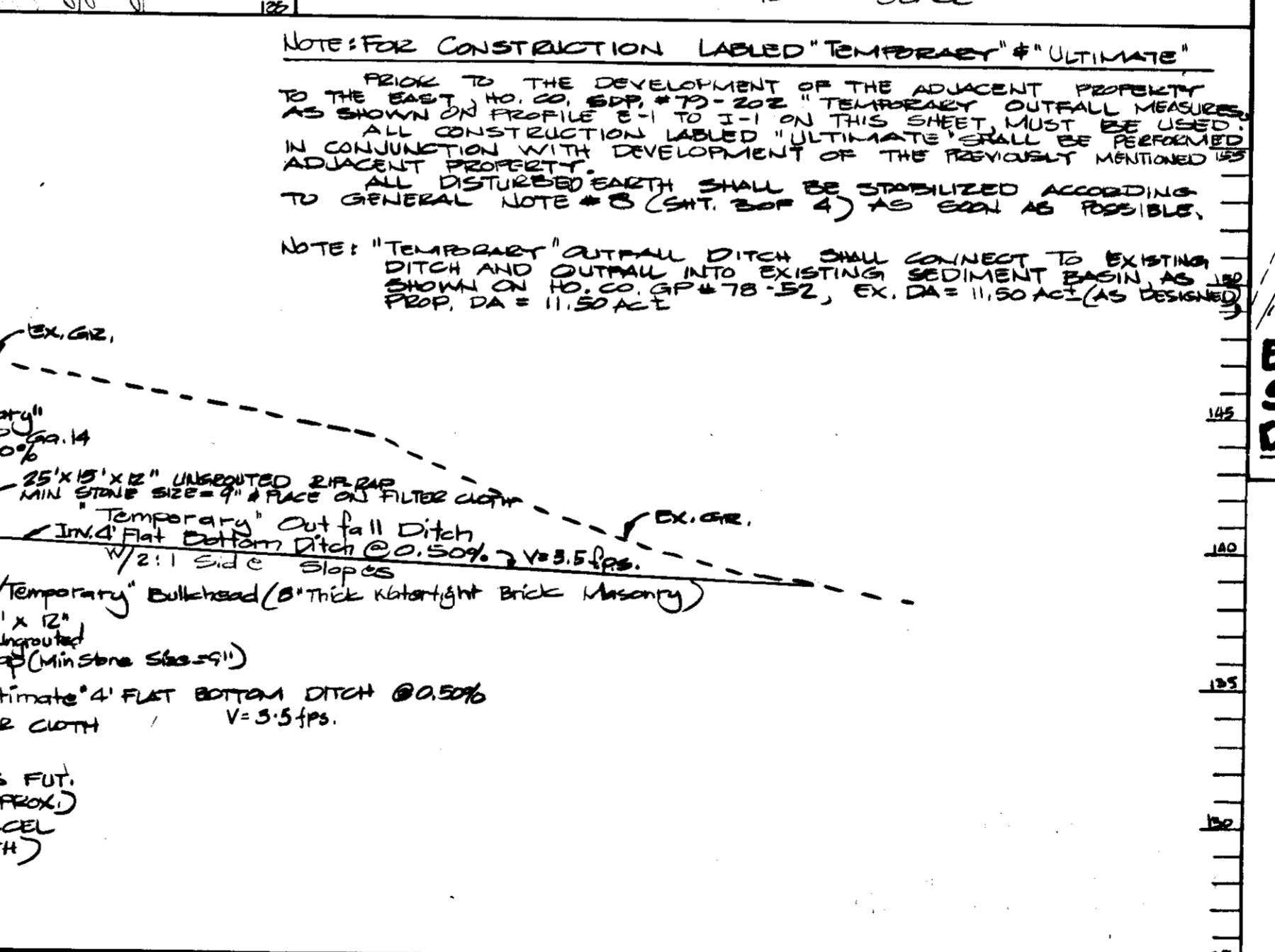
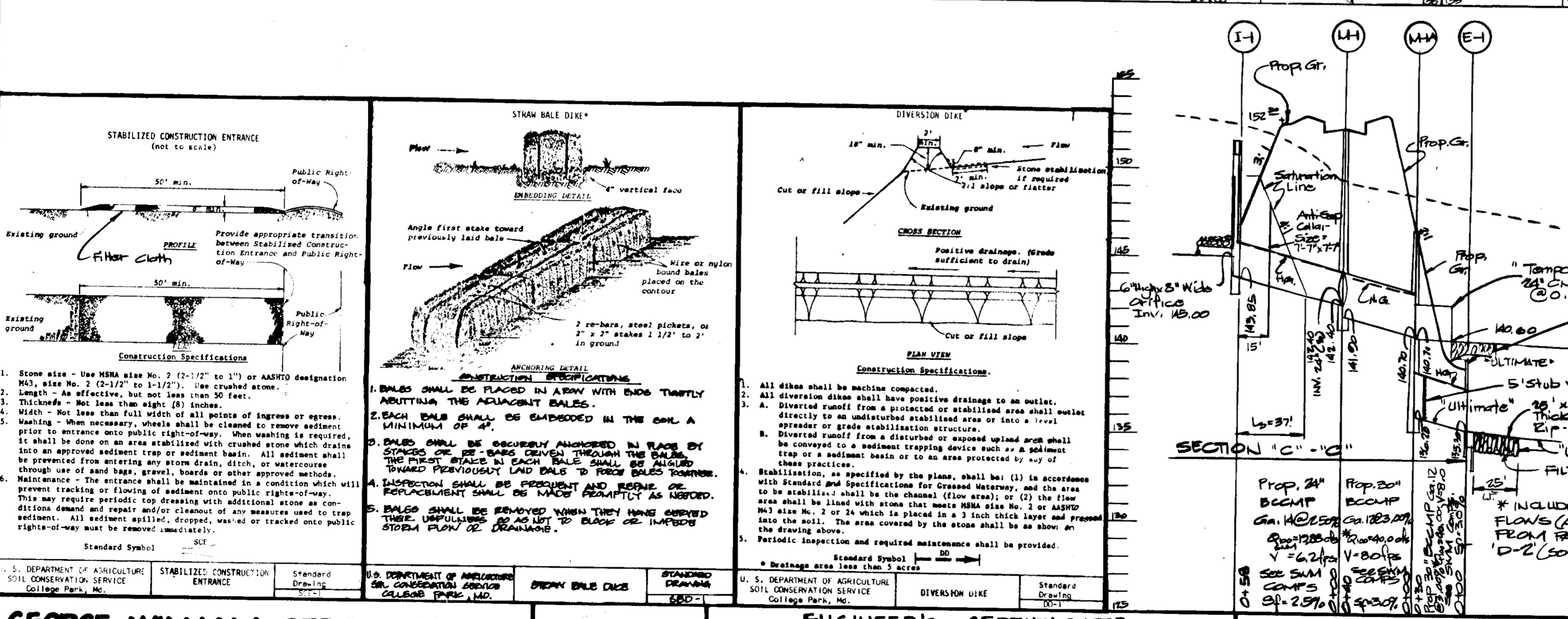
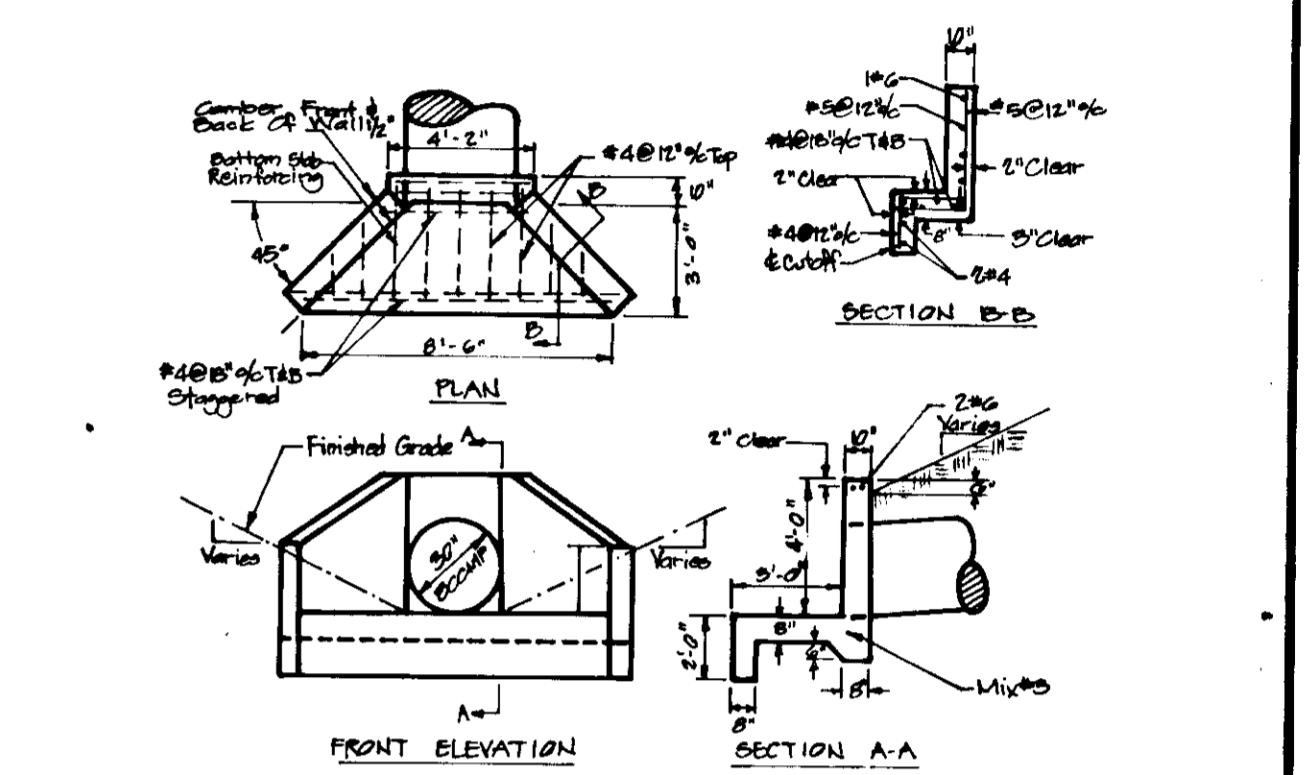
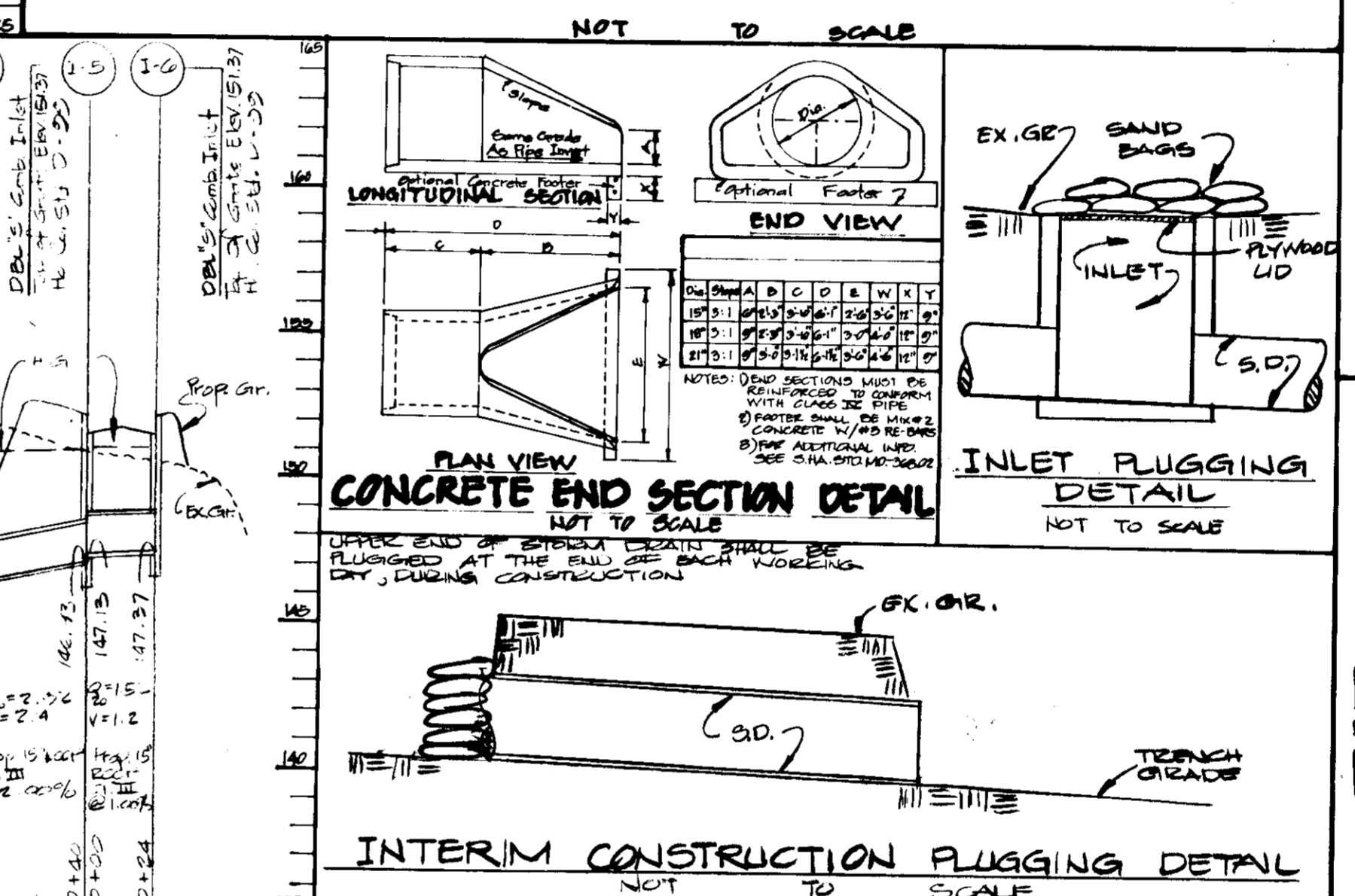
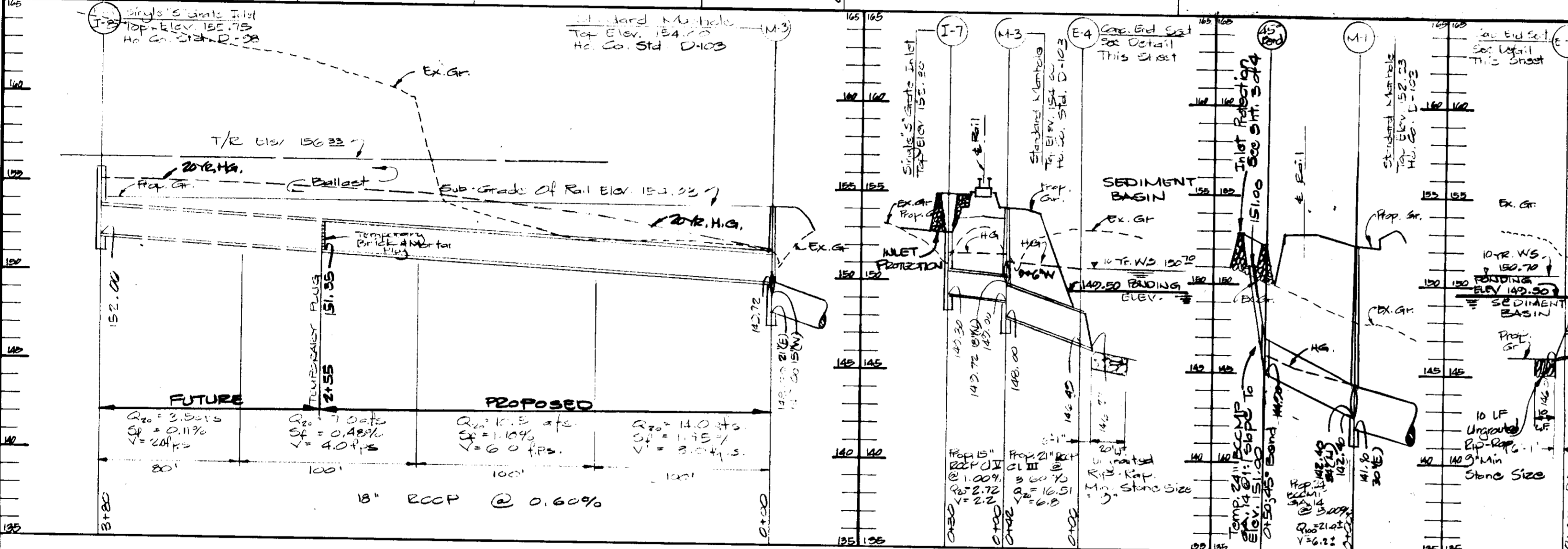
APPROVED FOR HOWARD SOIL CONSERVATION DISTRICT

DATE 11-24-79

REVIEWED FOR HOWARD SOIL CONSERVATION DISTRICT AND MEETS TECHNICAL REQUIREMENTS

DATE 11-24-79

SIGNATURE: THE UNITED STATES SOIL CONSERVATION DISTRICT; DATE



**GEORGE WILLIAM STEPHENS, JR. & ASSOCIATES INC.**  
 ENGINEERS & SURVEYORS  
 303 ALLEGHENY AVENUE  
 TOWSON, MARYLAND, 21204

**ENGINEER'S CERTIFICATE**

I HEREBY CERTIFY THAT THIS PLAN FOR EROSION & SEDIMENT CONTROL REPLACEMENT A PRACTICAL AND USABLE PLAN BASED ON MY PERSONAL KNOWLEDGE OF THE SITE CONDITIONS AND THAT IT WAS PREPARED IN ACCORDANCE WITH THE REQUIREMENTS OF THE HOWARD SOIL CONSERVATION DISTRICT.

*George William Stephens, Jr.*  
 REGISTERED PROFESSIONAL ENGINEER  
 REG. NO. 8930  
 DATE 9/12/79

**OWNER/DEVELOPER**  
**SEVENTH-DAY ADVENTISTS**  
 GENERAL CONFERENCE  
 6840 EASTERN AVENUE  
 NORTHWEST  
 WASHINGTON, D.C., 20012

**DEVELOPER'S CERTIFICATE**

I HEREBY CERTIFY THAT ALL DEVELOPMENT AND/OR CONSTRUCTION WILL BE DONE ACCORDING TO THIS PLAN OF DEVELOPMENT AND PLAN FOR EROSION AND SEDIMENT CONTROL AND I ALSO AUTHORIZE PERIODIC ON-SITE INSPECTION BY THE HOWARD SOIL CONSERVATION DISTRICT OR THEIR AUTHORIZED AGENTS AS ARE DEEMED NECESSARY.

*Rev. Frank Jones*  
 REV. FRANK JONES  
 DATE 9-13-79

**EROSION & SEDIMENT CONTROL PLAN**  
 FOR  
**SEVENTH-DAY ADVENTISTS WAREHOUSE**  
 ROUTE ONE HUNDRED BUSINESS PARK  
 HOWARD COUNTY, MARYLAND  
 SCALE: 1" = 50'  
 SHEET 4 OF 5  
 FIRST ELECTION DISTRICT AUGUST 10, 1970

DESIGN BY: T.C.  
 DRAWN BY: R.W.R.  
 CHECKED BY: T.C.  
 PROJECT NO. 4175

REVISIONS  
 10-19-79 R.W.R.  
 9-13-79

APPROVED  
 DIVISION OF LAND DEVELOPMENT  
 HOWARD COUNTY, MARYLAND  
 DATE 11-7-79  
 JAM



