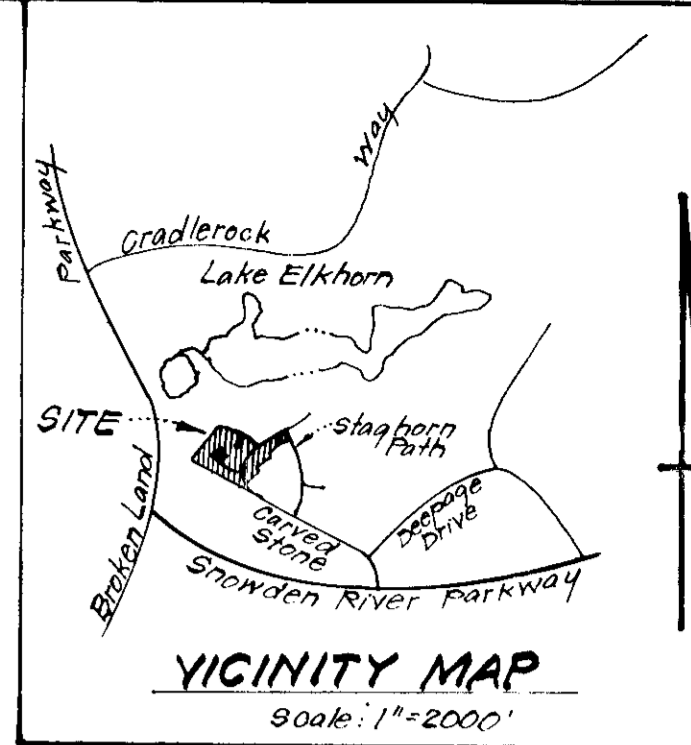
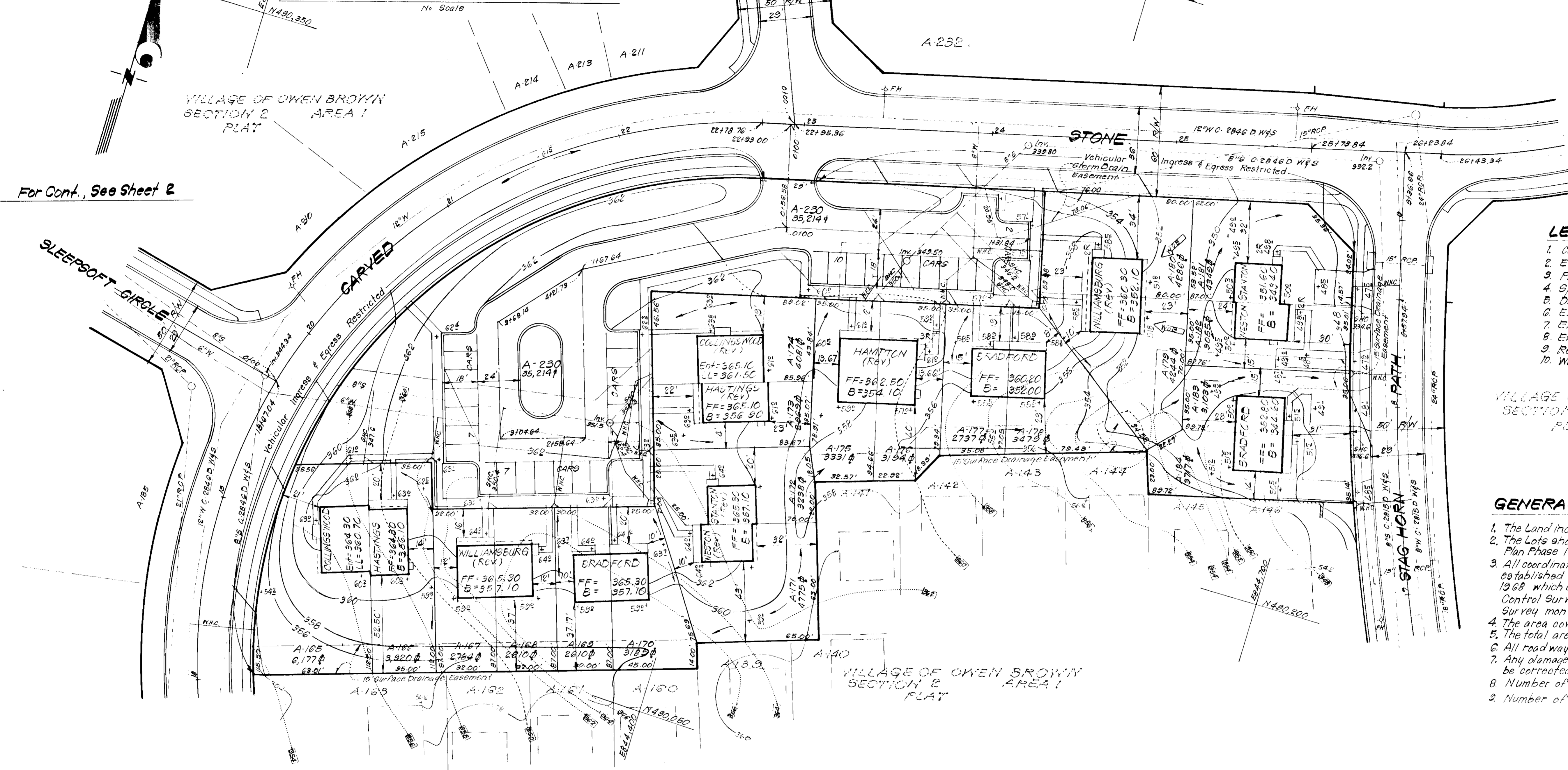


TYPICAL HOUSE TYPES AND ELEVATIONS
No Scale



VICINITY MAP
Scale: 1"=2000'



For Cont., See Sheet 2

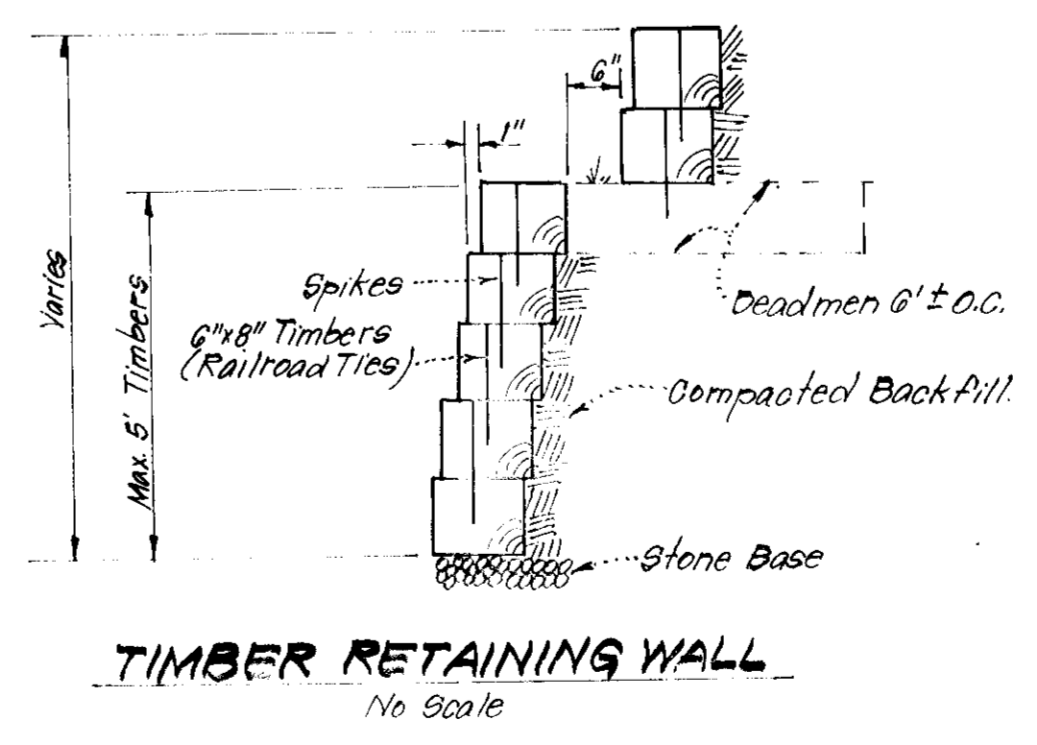
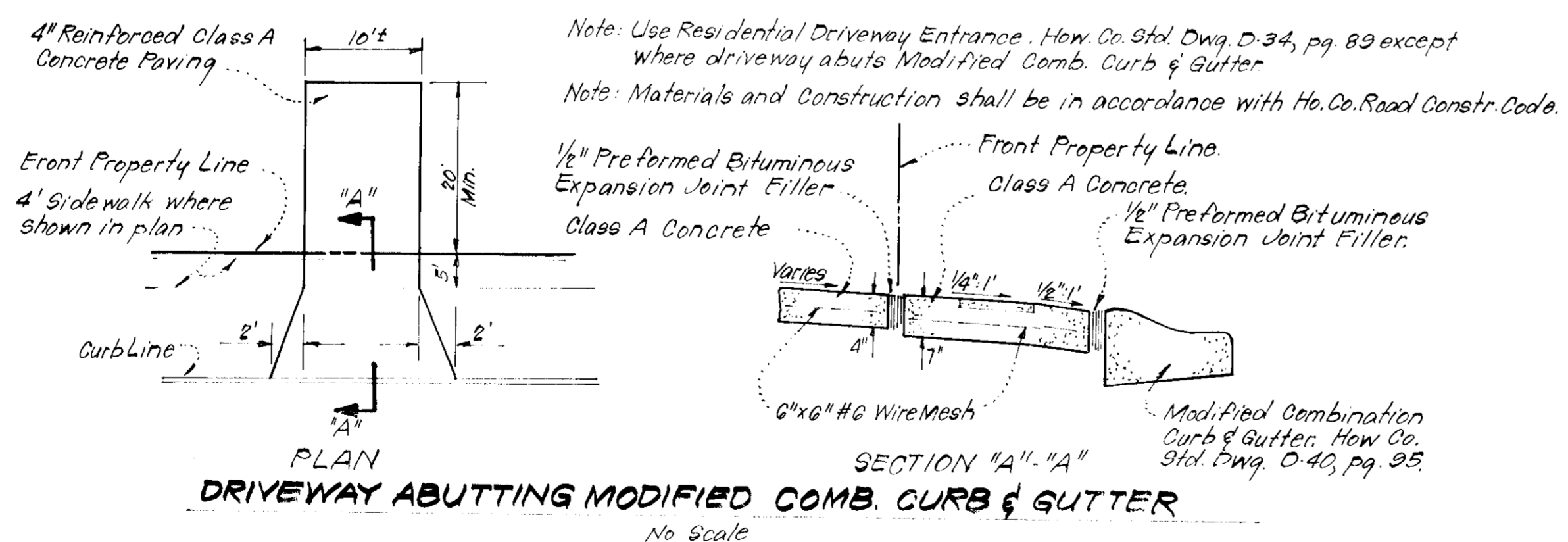
LEGEND:

1. Contour Interval	2'±
2. Existing Contour	---
3. Proposed Contour	---
4. Spot Elevation	+50'
5. Direction of Drainage	→
6. Exist. Storm Drain Line	---
7. Exist. Sewer Line	---
8. Exist. Water Line	---
9. Retaining Wall	---
10. Walk-Out Basement	---

VILLAGE OF OWEN BROWN
SECTION 2 AREA 1
PLAT #127

GENERAL NOTES:

- The Land included in this plan is zoned: New Town (Attached)
- The Lots shown on this plan are covered by Final Development Plan Phase 118 Part I-A.
- All coordinates are based on traverse controls per Columbia established by Maps, Inc., in 1965 by Purdum & Jeschke in 1968 which controls were tied to Maryland Bureau of Control Survey monuments and to U.S. Coast and Geodetic Survey monuments in the Columbia area.
- The area covered in this submission is located on Tax Map No. 42.
- The total area included in this plan is 5.343 Acres.
- All road ways are public & existing.
- Any damage to county owned rights of way or paving shall be corrected at developer's expense.
- Number of Units shown: 62
- Number of Parking Spaces: 124



APPROVED FOR PUBLIC WATER AND PUBLIC SEWERAGE SYSTEMS,
HOWARD COUNTY HEALTH DEPARTMENT
DATE: 11-27-79

APPROVED FOR PLANNING & ZONING
DATE: 12-1-79

APPROVED FOR STORM DRAINAGE SYSTEMS AND PUBLIC ROADS
DATE: 11/21/79

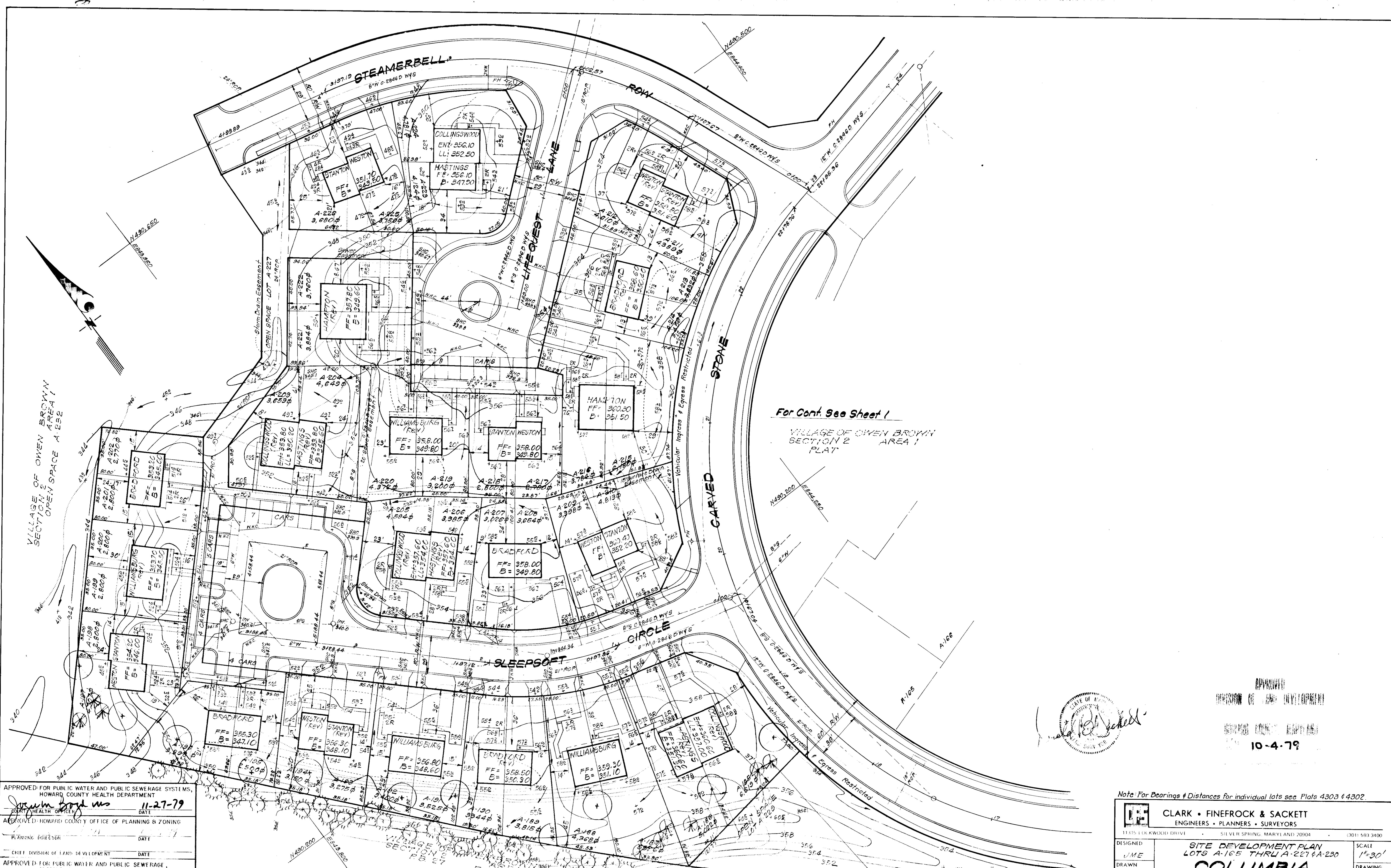
APPROVED
10-4-79

CLARK • FINEROCK & SACKETT
ENGINEERS • PLANNERS • SURVEYORS
13335 LOCKWOOD DRIVE SILVER SPRING, MARYLAND 20904 (301) 593-3400

DESIGNED: J.M.E.
CHECKED: J.M.E.
DATE: Aug, 1979

SCALE: 1"=30'
DRAWING: 1 of 3
JOB NO.: 78-1177
FILE NO.: 78-1177-X

FOR: The Ryland Group, Inc.
Suite 200 V.O.M. Office Bldg.
Columbia, Md. 21043



For Cont. See Sheet 1
 VILLAGE OF OWEN BROWN
 SECTION 2 AREA 1
 PLAY

APPROVED FOR PUBLIC WATER AND PUBLIC SEWERAGE SYSTEMS,
 HOWARD COUNTY HEALTH DEPARTMENT
 11-27-79
 DATE

APPROVED HOWARD COUNTY OFFICE OF PLANNING & ZONING
 DATE

CHIEF DIVISION OF PLANNING & ZONING
 DATE

APPROVED FOR PUBLIC WATER AND PUBLIC SEWERAGE,
 STORM DRAINAGE SYSTEMS AND PUBLIC ROADS
 HOWARD COUNTY DEPARTMENT OF PUBLIC WORKS
 11-27-79
 DATE



APPROVED
 DIVISION OF PLANNING & ZONING
 10-4-79

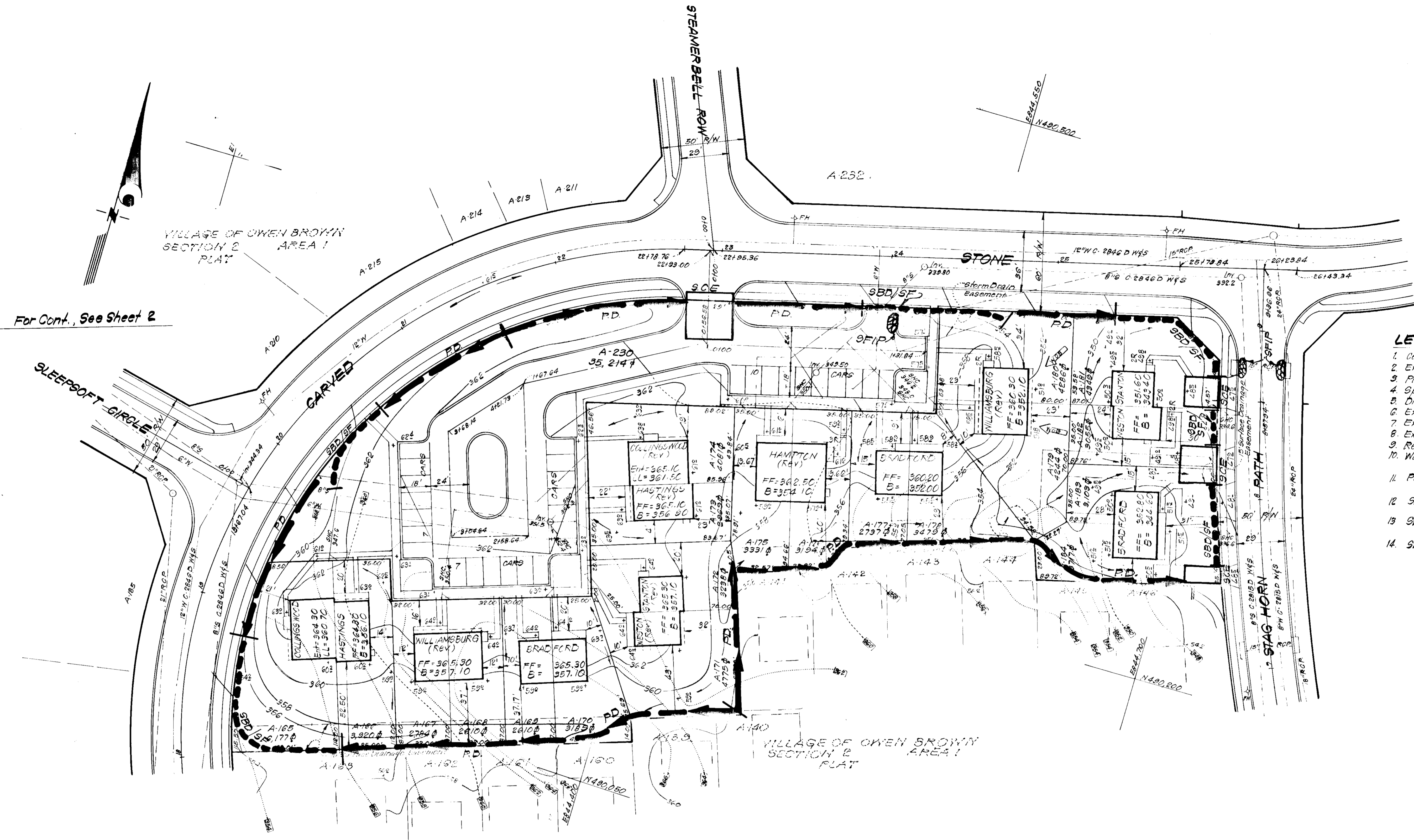
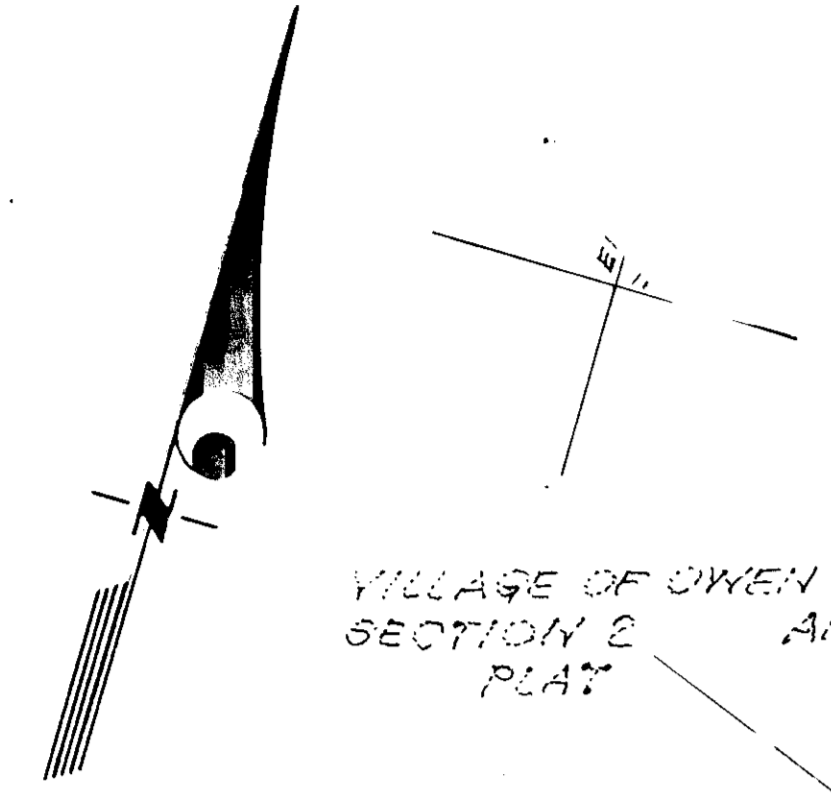
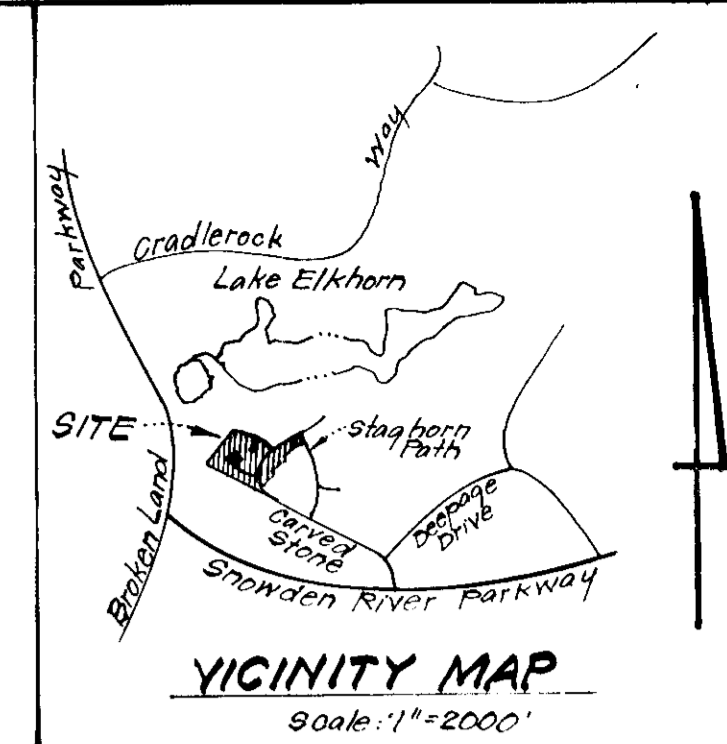
Note: For Bearings & Distances for individual lots see Plats 4303 & 4302.

CLARK • FINEFROCK & SACKETT ENGINEERS • PLANNERS • SURVEYORS 11115 LOCKWOOD DRIVE SILVER SPRING, MARYLAND 20904 (301) 593-3400		
DESIGNED J.M.E.	SITE DEVELOPMENT PLAN LOTS A-165 THRU A-227 & A-230 COLUMBIA VILLAGE OF OWEN BROWN SECTION 2 AREA 1 6th ELECTION DISTRICT HOWARD COUNTY, MARYLAND FOR: The Ryland Group, Inc. Suite 200 V.O.M. Office Bldg Columbia, Md. 21043	SCALE 1"=30'
DRAWN N.I.W.		DRAWING 2 of 5
CHECKED J.M.E.		JOB NO. 78-1177
DATE Aug. 1979		FILE NO. 78-1177-X

(30) EVERGREEN TREES 8" @ 10' INT. BY BLDGR
 BY HED AT FUTURE DATE

(1) PINE 4" @ 10' INT. BY BLDGR
 BY BLDGR

(1) ASPEN 4" @ 10' INT. BY BLDGR
 BY BLDGR



- LEGEND:**
- 1. Contour Interval 2 FT.
 - 2. Existing Contour - - - - -
 - 3. Proposed Contour - - - - -
 - 4. Spot Elevation +50'
 - 5. Direction of Drainage - - - - -
 - 6. Exist. Storm Drain Line - - - - -
 - 7. Exist. Sewer Line - - - - -
 - 8. Exist. Water Line - - - - -
 - 9. Retaining Wall - - - - -
 - 10. Walk-Out Basement - - - - -
 - 11. Perimeter Dike PD
 - 12. Straw Bale Dike or Silt Fence SBD/SF
 - 13. Stone Filter Inlet Protection SFIP
 - 14. Stone Construction Entrance S.C.E.

VILLAGE OF OWEN BROWN SECTION 2 AREA 1 PLAT

VILLAGE OF OWEN BROWN SECTION 2 AREA 1 PLAT

For Cont., See Sheet 2

Note: Clean Out existing sediment Traps No 1 & 2 as shown on previously approved Sediment and Erosion Control Plan # F-79-20.

APPROVED FOR PUBLIC WATER AND PUBLIC SEWERAGE SYSTEMS,
HOWARD COUNTY HEALTH DEPARTMENT
Joseph J. Jones 11-27-79
COUNTY HEALTH OFFICER DATE

APPROVED: HOWARD COUNTY OFFICE OF PLANNING & ZONING
William T. Rowe DATE
PLANNING DIRECTOR DATE

CHIEF DIVISION OF LAND DEVELOPMENT DATE

APPROVED FOR PUBLIC WATER AND PUBLIC SEWERAGE,
STORM DRAINAGE SYSTEMS AND PUBLIC ROADS
HOWARD COUNTY DEPARTMENT OF PUBLIC WORKS
William T. Rowe 11-27-79
DIRECTOR DATE

Allen J. Brown 11-21-79
CHIEF BUREAU OF ENGINEERING DATE

Reviewed for *Howard* S.C.D.
Name
and meets Technical Requirements
James M. Nelson 11-15-79
Signature Date
U.S. Soil Conservation Service

THIS DEVELOPMENT PLAN IS APPROVED
FOR SOIL EROSION AND SEDIMENT
CONTROL BY THE HOWARD SOIL
CONSERVATION DISTRICT.

William T. Rowe 11-14-79
Approved Date

DEVELOPER'S CERTIFICATE

I certify that all development and/or construction will be done according to this plan of development and plan for Erosion and Sediment Control, and I authorize periodic on-site inspection by the Howard Soil Conservation District or their authorized agents as are deemed necessary. Deviation from this plan will not be made unless authorized by the Howard Soil Conservation District.

Lawrie B. Sargent Date

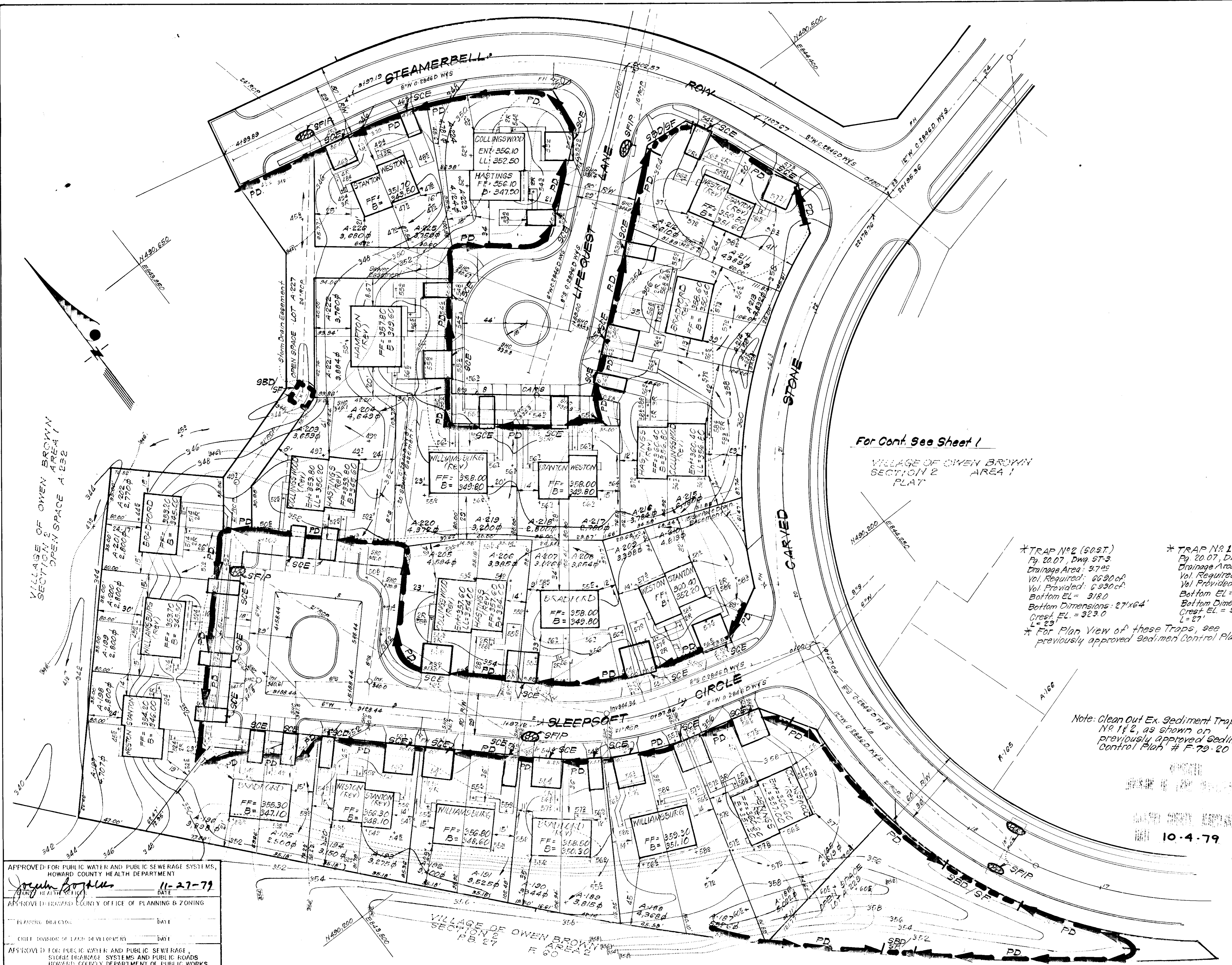
ENGINEER'S CERTIFICATE

I hereby certify that this plan for Erosion and Sediment Control represents a practical and workable plan based on my personal knowledge of the site conditions and that it was prepared in accordance with the requirements of the Howard Soil Conservation District.

William T. Rowe 8-30-79
G. Nelson Clark Date



CLARK • FINEFROCK & SACKETT ENGINEERS • PLANNERS • SURVEYORS 11315 LOKWOOD DRIVE SILVER SPRING, MARYLAND 20904 (301) 593-3400		
DESIGNED <i>J.L.S.</i>	SEDIMENT & EROSION CONTROL PLAN LOTS A-165 THRU A-227 & A-230 COLUMBIA VILLAGE OF OWEN BROWN SECTION 2 AREA 1 6TH ELECTION DISTRICT HOWARD COUNTY, MARYLAND FOR: The Ryland Group, Inc. Suite 200 N.O.M. Office Bldg. Columbia, Md. 21043	SCALE 1"=30'
DRAWN <i>N.L.W.</i>		DRAWING 3 of 5
CHECKED <i>J.L.S.</i>		JOB NO. 78-1177
DATE Aug. 1, 1979		FILE NO. 78-1177SE



For Cont. See Sheet 1
 VILLAGE OF OWEN BROWN
 SECTION 2
 AREA 1
 PLAN

* TRAP NO 2 (60ST)
 Pg. 20.07, Dwg. ST-3
 Drainage Area: 3722
 Vol. Required: 6690cf
 Vol. Provided: 6930cf
 Bottom EL = 318.0
 Bottom Dimensions: 27'x6'
 Crest EL = 323.0
 L = 23'

* TRAP NO 1 (60ST)
 Pg. 20.07, Dwg. ST-3
 Drainage Area: 4322
 Vol. Required: 7780cf
 Vol. Provided: 8190cf
 Bottom EL = 319.0
 Bottom Dimensions: see Plan (F-79-20)
 Crest EL = 324.0 (Approx 24'x85')
 L = 27'

* For Plan View of these Traps, see
 previously approved Sediment Control Plan # F-79-20.

Note: Clean Out Ex. Sediment Traps
 No. 1 & 2, as shown on
 previously approved Sediment
 Control Plan # F-79-20

Reviewed for Howard S.C.D.
 Name
 and meets Technical Requirements
 Signature William J. Rose Date 11-15-79
 U.S. Soil Conservation Service

THIS DEVELOPMENT PLAN IS APPROVED
 FOR EROSION AND SEDIMENT
 CONTROL BY THE HOWARD SOIL
 CONSERVATION DISTRICT

William J. Rose 11-14-79
 Approved Date

DEVELOPER'S CERTIFICATE
 I certify that all development and/or construction will be done according to this plan of development and plan for Erosion and Sediment Control, and authorize periodic on-site inspection by the Soil Conservation District or their authorized agents as deemed necessary. Deviation from this plan will not be made unless authorized by the Howard Soil Conservation District.

LBS
 Lowrie B. Sargent Date

ENGINEER'S CERTIFICATE
 I hereby certify that this plan for Erosion and Sediment Control represents a practical and workable plan based on my personal knowledge of the site conditions and that it was prepared in accordance with the requirements of the Howard Soil Conservation District.

G. Nelson Clark 8-30-79
 G. Nelson, Clark



APPROVED FOR PUBLIC WATER AND PUBLIC SEWERAGE SYSTEMS,
 HOWARD COUNTY HEALTH DEPARTMENT
Joseph Boyles 11-27-79
 DATE

APPROVED FOR HOWARD COUNTY OFFICE OF PLANNING & ZONING
 DATE

CHECKED DIVISION OF LAND DEVELOPMENT DATE

APPROVED FOR PUBLIC WATER AND PUBLIC SEWERAGE,
 STORM DRAINAGE SYSTEMS AND PUBLIC ROADS,
 HOWARD COUNTY DEPARTMENT OF PUBLIC WORKS
Allen S. Brown 11/21/79
 DATE

CLARK • FINEFROCK & SACKETT ENGINEERS • PLANNERS • SURVEYORS 11105 LEE WOOD DRIVE SILVER SPRING, MARYLAND 20904 (301) 593-3400		
DESIGNED JLS	SEDIMENT AND EROSION CONTROL PLAN LOTS A-165 THRU A-227 & A-210	SCALE 1"=30'
DRAWN JLS	COLUMBIA	DRAWING 4045
CHECKED JLS	VILLAGE OF OWEN BROWN SECTION 2 AREA 1 ELECTION DISTRICT HOWARD COUNTY, MARYLAND	JOB NO. 78-1177
DATE Aug 2, 1979	FOR: The Ryland Group, Inc. Suite 200 Y.O.M. Office Bldg Columbia, MD 21043	FILE NO. 78-1177SE

