

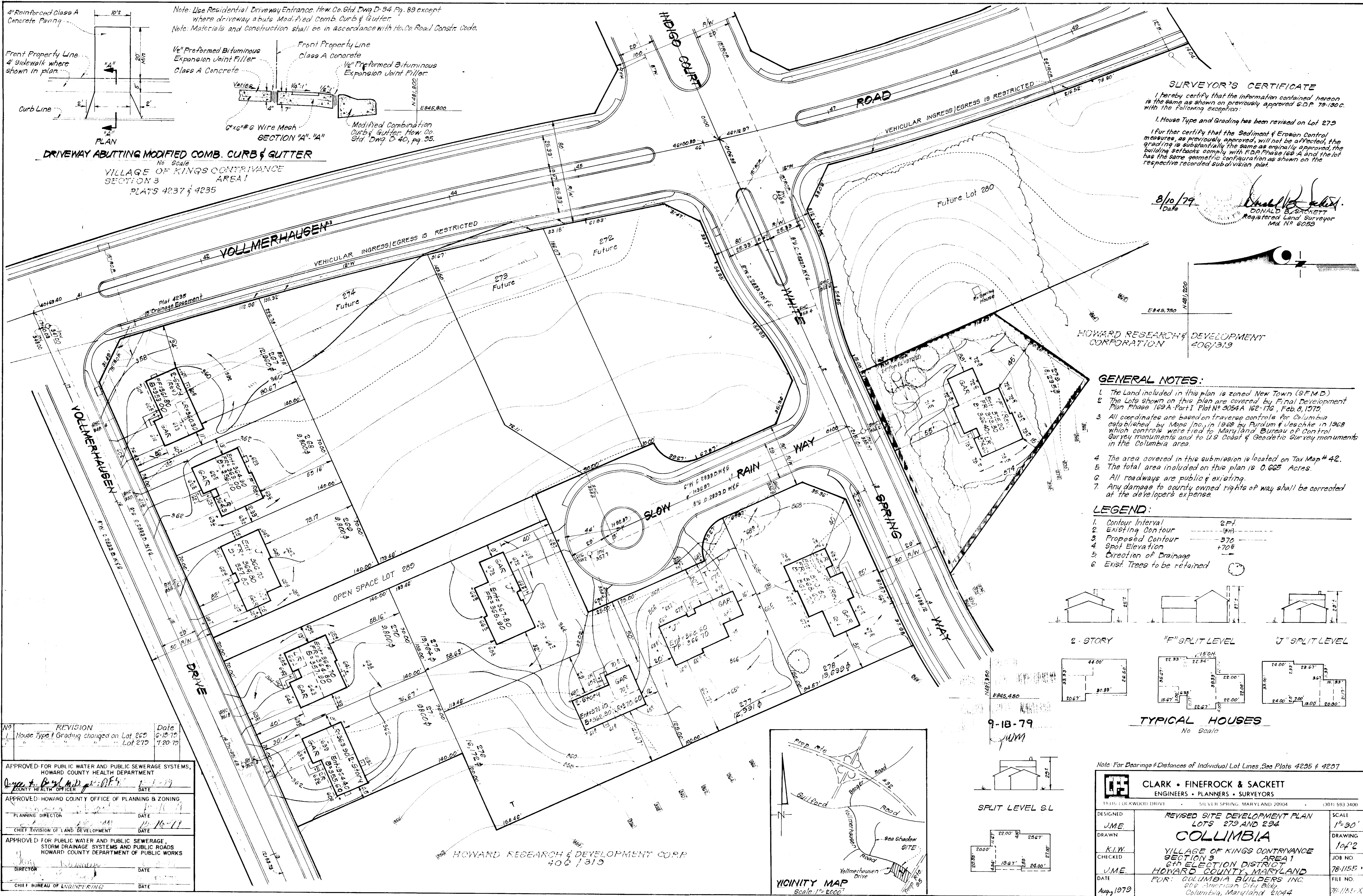
Note: Use Residential Driveway Entrance, H.W. Co. Std. Dwg. D-94, Pg. 89 except where driveway abuts Modified Comb. Curb & Gutter.
Note: Materials and construction shall be in accordance with H.W. Co. Road Constr. Code.

1/2" Preformed Bituminous Expansion Joint Filler
Class A Concrete
Front Property Line
Class A Concrete
1/2" Preformed Bituminous Expansion Joint Filler
Modified Combination Curb & Gutter, H.W. Co. Std. Dwg. D-40, pg. 95.
6"x6" #6 Wire Mesh
SECTION "A" - "A"

DRIVEWAY ABUTTING MODIFIED COMB. CURB & GUTTER
No Scale
VILLAGE OF KINGS CONTRIVANCE
SECTION 3
AREA 1
PLATS 4237 & 4235

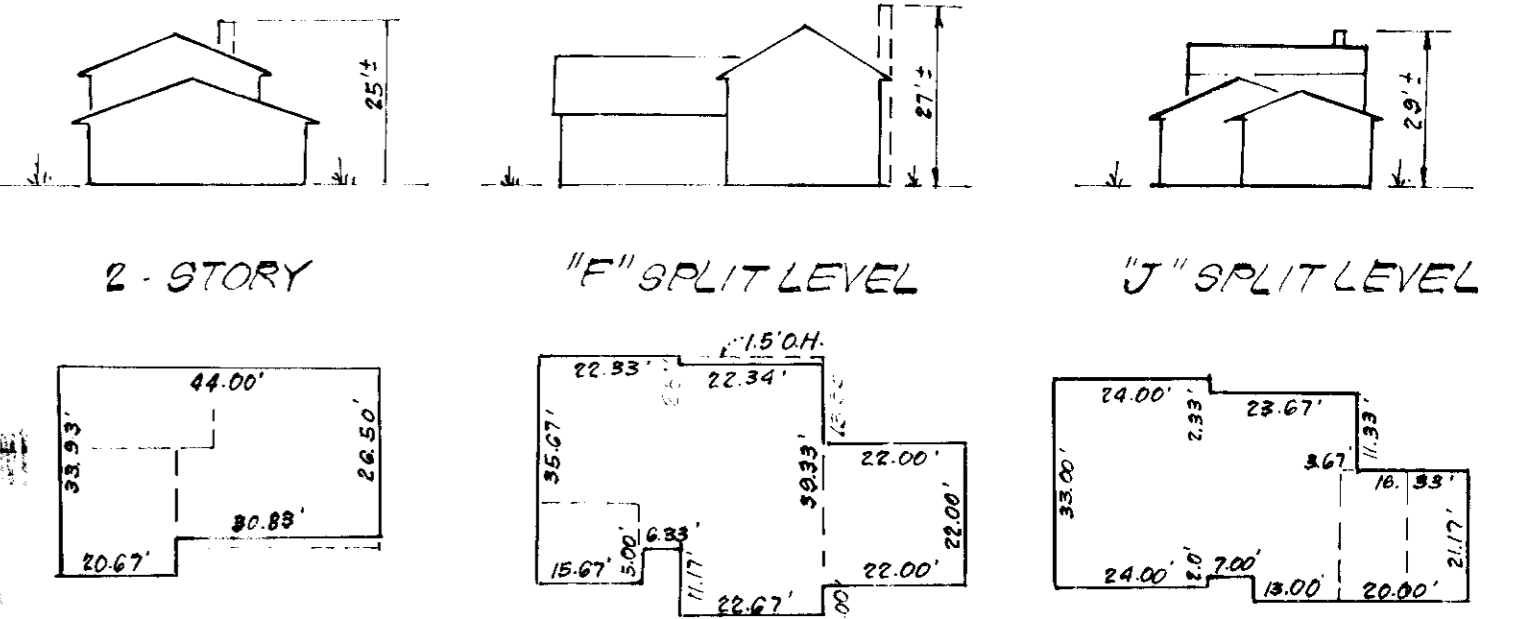
SURVEYOR'S CERTIFICATE
I hereby certify that the information contained herein is the same as shown on previously approved S.D.P. 79-130-C with the following exception:
1. House Type and Grading has been revised on Lot 279
I further certify that the Sediment & Erosion Control measures as previously approved, will not be affected, the grading is substantially the same as originally approved, the building setbacks comply with F.D.P. Phase 168-A and the lot has the same geometric configuration as shown on the respective recorded subdivision plat.

8/10/79
Date
DONALD B. SACKETT
Registered Land Surveyor
Md. No. 6059

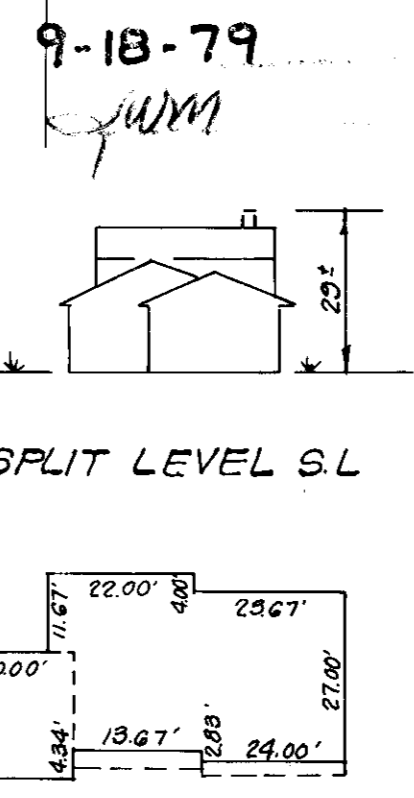


- GENERAL NOTES:**
- The Land included in this plan is zoned New Town (S.F.M.D.)
 - The Lots shown on this Plan are covered by Final Development Plan Phase 169A-Part I Plat No. 9054A 162-176, Feb. 8, 1979.
 - All coordinates are based on traverse controls for Columbia established by Maps Inc. in 1968 by Purdom & Jeschke in 1968 which controls were tied to Maryland Bureau of Control Survey monuments and to U.S. Coast & Geodetic Survey monuments in the Columbia area.
 - The area covered in this submission is located on Tax Map # 42.
 - The total area included on this plan is 0.665 Acres.
 - All roadways are public & existing.
 - Any damage to county owned rights of way shall be corrected at the developer's expense.

- LEGEND:**
- Contour Interval 2 FT.
 - Existing Contour (solid line)
 - Proposed Contour (dashed line)
 - Spot Elevation (+70)
 - Direction of Drainage (arrow)
 - Exist. Trees to be retained (circle)

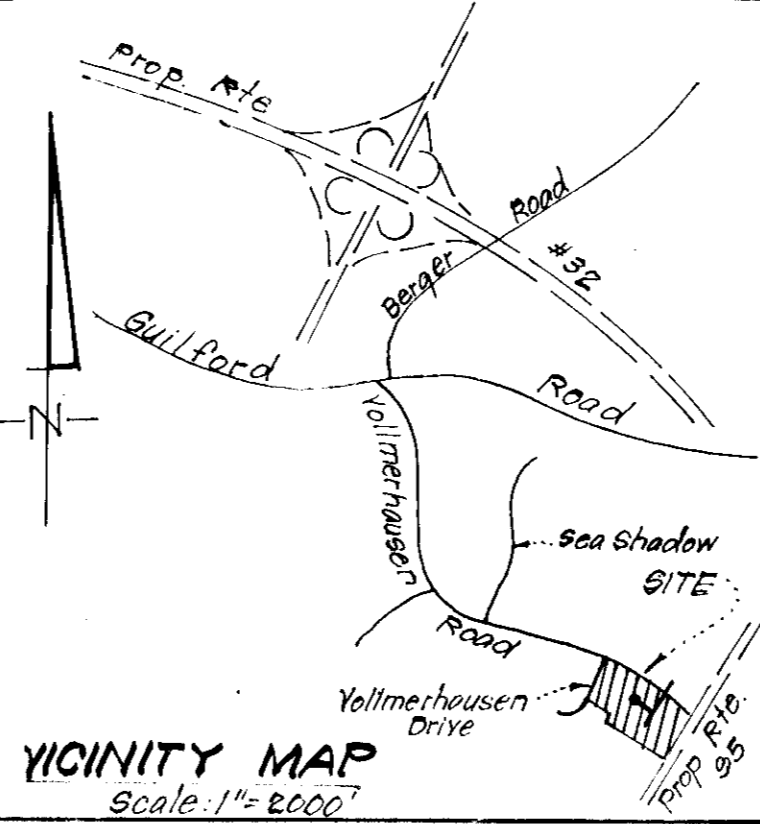


TYPICAL HOUSES
No Scale



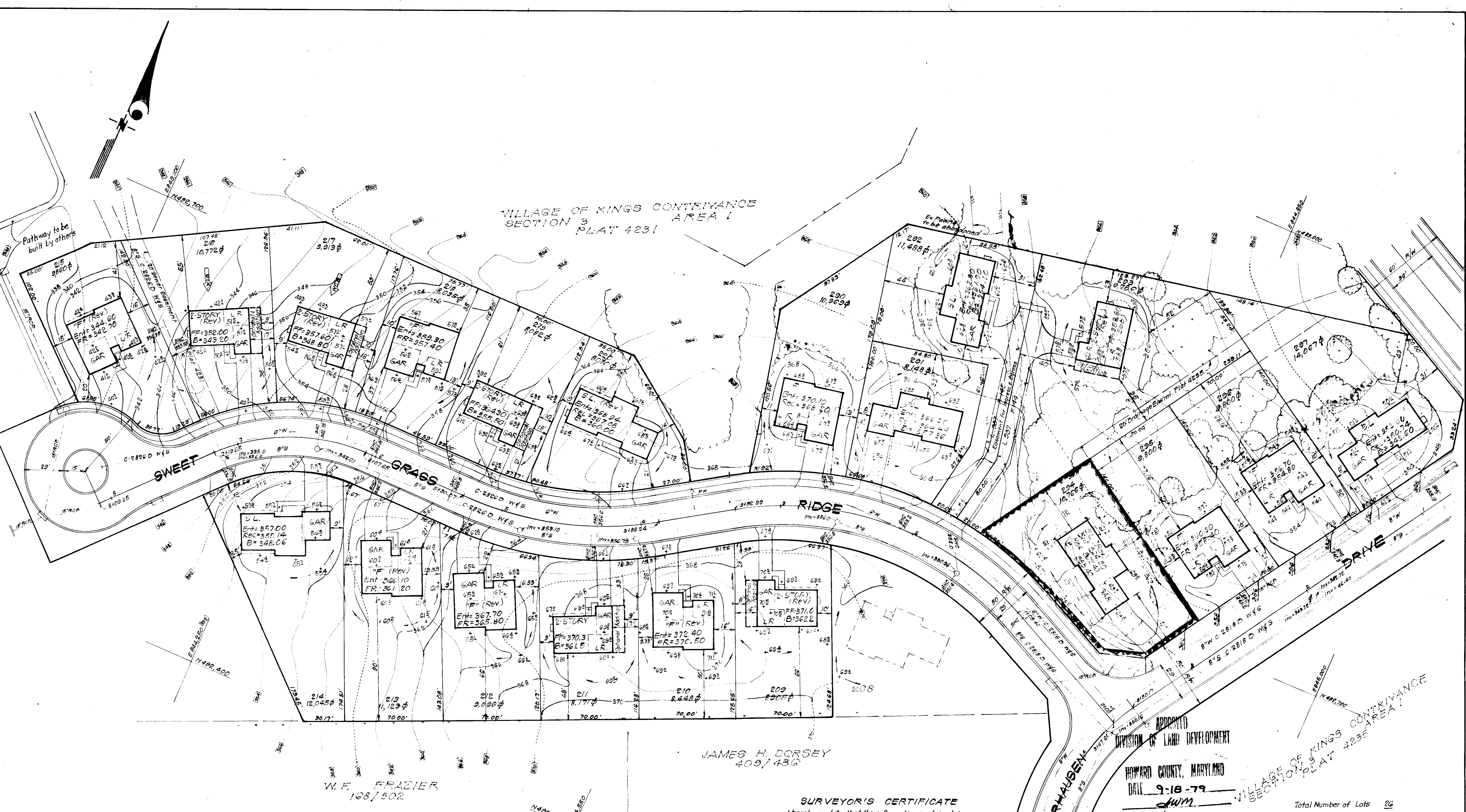
Note: For Bearings & Distances of Individual Lot Lines, See Plats 4235 & 4237

CLARK • FINEROCK & SACKETT ENGINEERS • PLANNERS • SURVEYORS 11415-1 OAKWOOD DRIVE SILVER SPRING, MARYLAND 20904 (301) 593-3400		
DESIGNED J.M.E.	REVISED SITE DEVELOPMENT PLAN LOTS 279 AND 294	SCALE 1"=30'
DRAWN K.L.W.	COLUMBIA	DRAWING 1042
CHECKED J.M.E.	VILLAGE OF KINGS CONTRIVANCE SECTION 3 AREA 1 6TH ELECTION DISTRICT HOWARD COUNTY, MARYLAND	JOB NO. 78-1155-1
DATE Aug, 1979	FOR: COLUMBIA BUILDERS INC. 606 American City Bldg. Columbia, Maryland 21044	FILE NO. 78-1155-X



NO. 1	REVISION House Type & Grading changed on Lot 269 & Lot 279	Date 6-13-79 7-20-79
APPROVED FOR PUBLIC WATER AND PUBLIC SEWERAGE SYSTEMS, HOWARD COUNTY HEALTH DEPARTMENT <i>[Signature]</i> COUNTY HEALTH OFFICER DATE		
APPROVED: HOWARD COUNTY OFFICE OF PLANNING & ZONING <i>[Signature]</i> PLANNING DIRECTOR DATE		
APPROVED FOR PUBLIC WATER AND PUBLIC SEWERAGE, STORM DRAINAGE SYSTEMS AND PUBLIC ROADS HOWARD COUNTY DEPARTMENT OF PUBLIC WORKS <i>[Signature]</i> DIRECTOR DATE		
CHIEF BUREAU OF ENGINEERING DATE		

VILLAGE OF KINGS CONTRIVANCE
SECTION 3 PLAT 4231 AREA I



JAMES H. DORSEY
409/436

V. F. FRAZIER
108/502

SURVEYOR'S CERTIFICATE
I hereby certify that the information contained herein is the same as shown on previously approved S.D.P. 79-117.C. with the following exception:
1. House Type and Grading has been revised on Lot 294
I further certify that the Sediment & Erosion Control measures, as previously approved, will not be affected, the grading is substantially the same as originally approved, the building setbacks comply with F.D.P. Phase 129.A and the lot has the same geometric configuration as shown on the respective recorded subdivision plat.

0/10/79
DONALD B. SACKETT
Registered Land Surveyor
Md. No. 8059

APPROVED
DIVISION OF LAND DEVELOPMENT
HOWARD COUNTY, MARYLAND
DATE 9-18-79
AWM

VILLAGE OF KINGS CONTRIVANCE
SECTION 3 PLAT 4231 AREA I
Total Number of Lots 26

For Individual Bearings & Distances of Lot Line See Plats 4235 & 4237

CLARK • FINEROCK & SACKETT
ENGINEERS • PLANNERS • SURVEYORS
11315 LOCKWOOD DRIVE SILVER SPRING MARYLAND 20904 (301) 593 3400

DESIGNED J.M.E.	REVISED SITE DEVELOPMENT PLAN LOTS 279 AND 294	SCALE 1"=30'
DRAWN K.I.W.	COLUMBIA	DRAWING 2 of 2
CHECKED J.M.E.	VILLAGE OF KINGS CONTRIVANCE SECTION 3 AREA I 6TH ELECTION DISTRICT HOWARD COUNTY, MARYLAND	JOB NO. 78-1155
DATE Aug, 1979	FOR: COLUMBIA BUILDERS 606 American City Bldg. Columbia, Maryland 21044	FILE NO. 78-1155-X

APPROVED FOR PUBLIC WATER AND PUBLIC SEWERAGE SYSTEMS,
HOWARD COUNTY HEALTH DEPARTMENT
COUNTY HEALTH OFFICER J. J. [Signature] DATE 10-10-79

APPROVED HOWARD COUNTY OFFICE OF PLANNING & ZONING
PLANNING DIRECTOR [Signature] DATE 10-16-79

APPROVED FOR PUBLIC WATER AND PUBLIC SEWERAGE,
STORM DRAINAGE SYSTEMS AND PUBLIC ROADS
HOWARD COUNTY DEPARTMENT OF PUBLIC WORKS
DIRECTOR [Signature] DATE 10-8-79

CHIEF BUREAU OF ENGINEERING [Signature] DATE 10-16-79

NO.	REVISION	DATE
1.	House Type & Grading Changes on Lot 294	7-20-79
2.	Rev Grading Lots 294 & 293	7-23-79