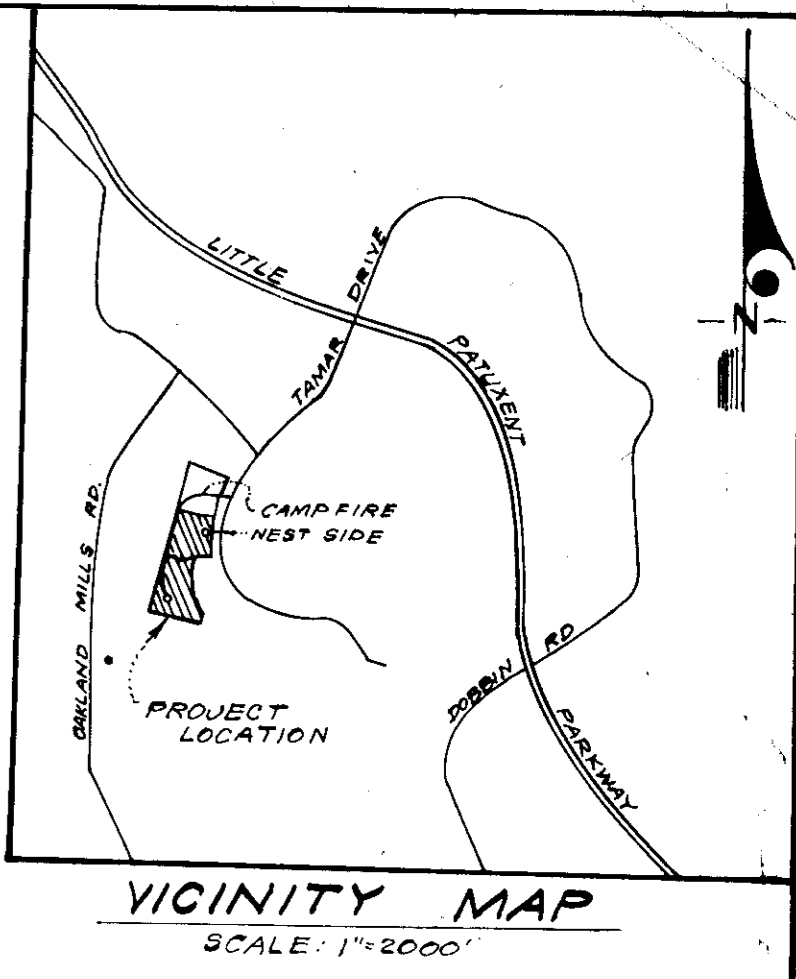


NO.	REVISION	Date
1	Changed House Type & Grading Lot F-26	5-22-79
2	" " " " " Lots F-15 & F-19	7-10-79

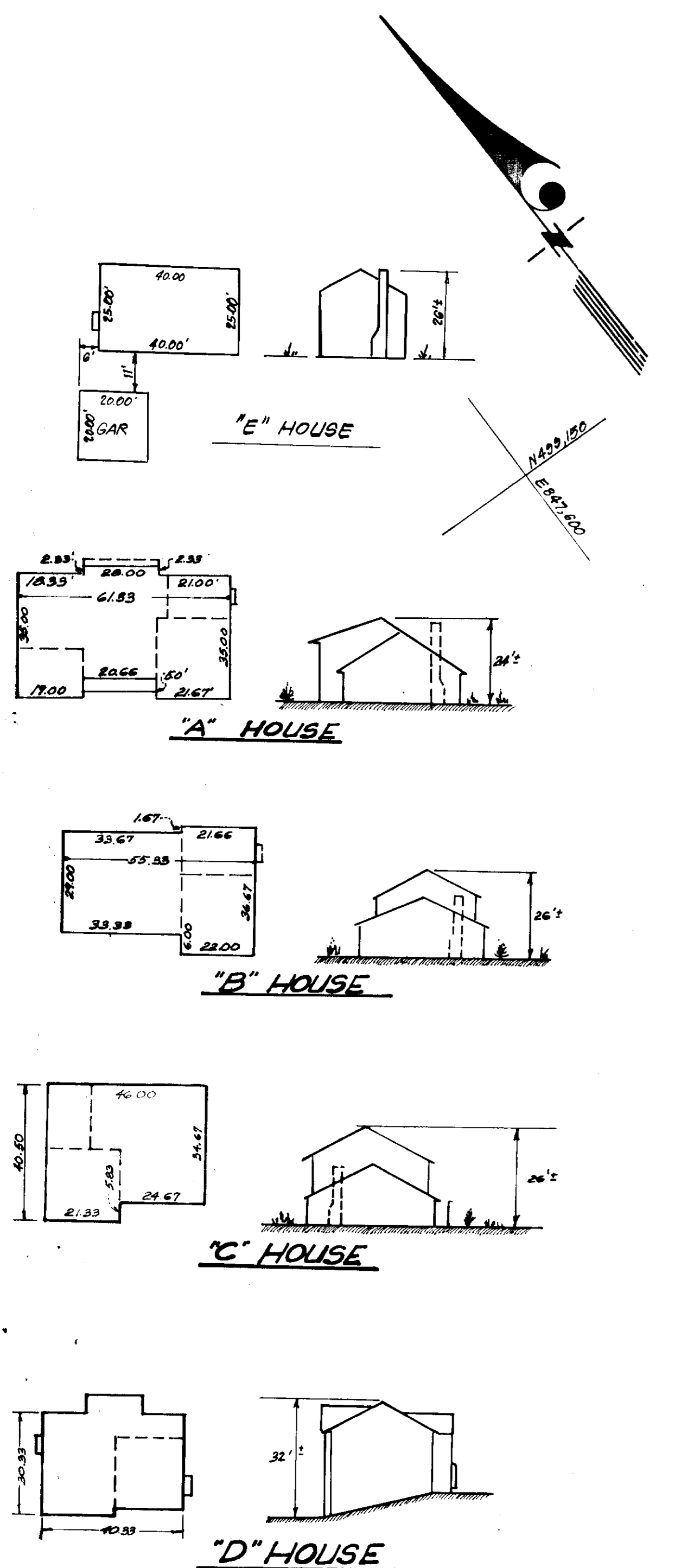
**LEGEND**

1. Contour Interval 2 Ft.
2. Existing Contour 380
3. Proposed Contour 380
4. Spot Elevation +80E
5. Direction of Drainage
6. Ex. Trees to be Retained
7. Yard Requirements: Front: 20 Ft. on 50' Wide Street  
30 Ft. on 60' Wide Street  
Side: 7.5' (Min.)
8. Walk-Out Basement
9. 100-Year Flood Plain Elevation #3736
10. Timber Retaining Wall



**GENERAL NOTES**

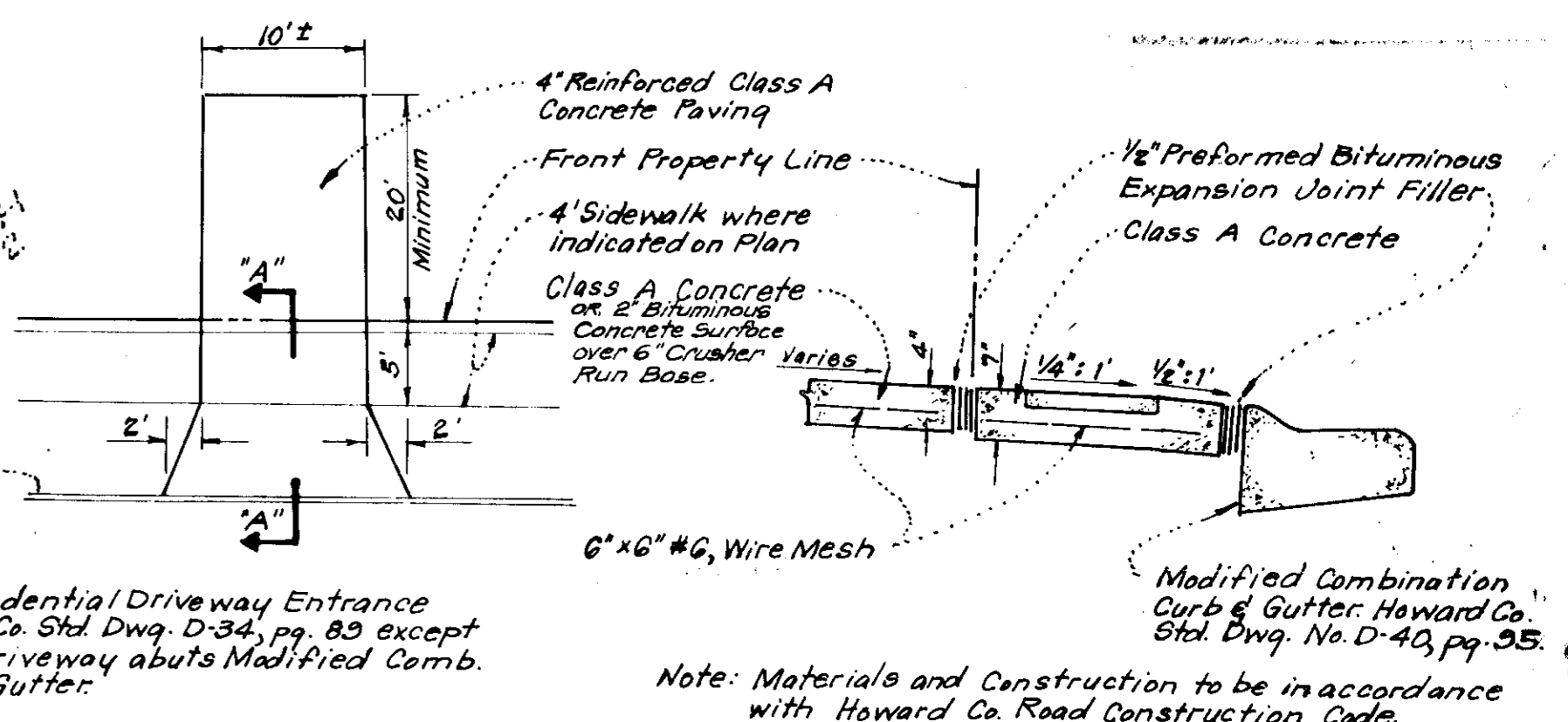
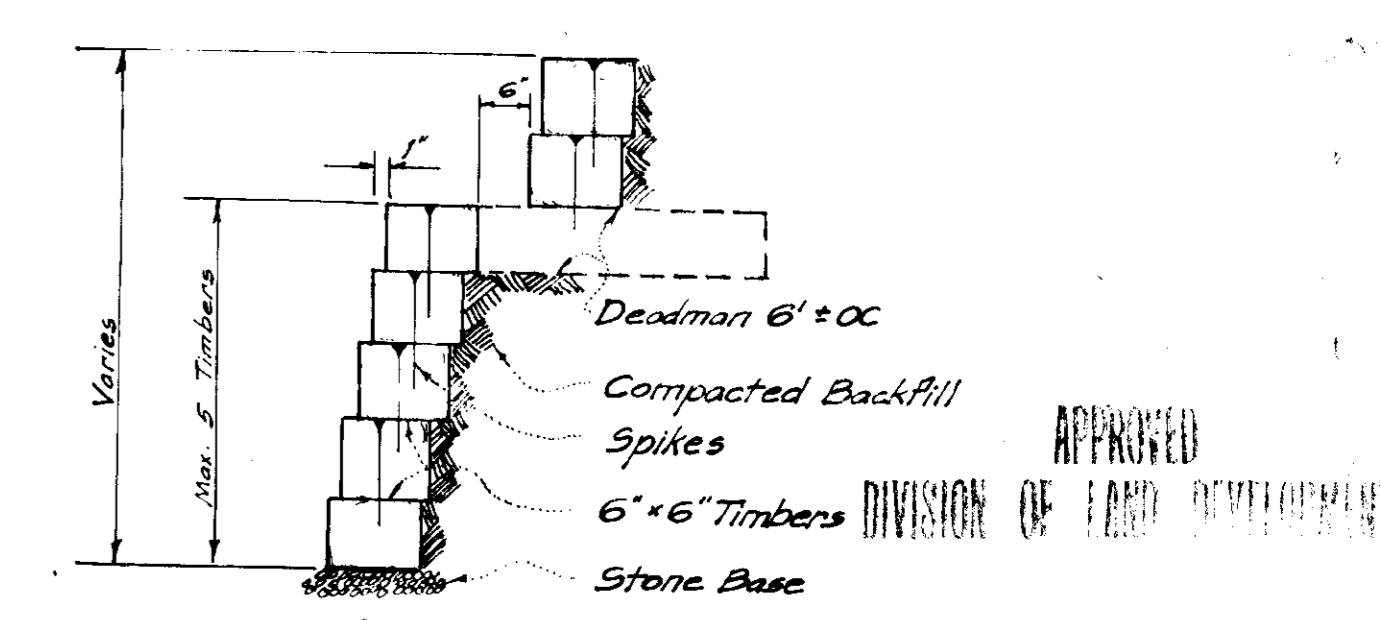
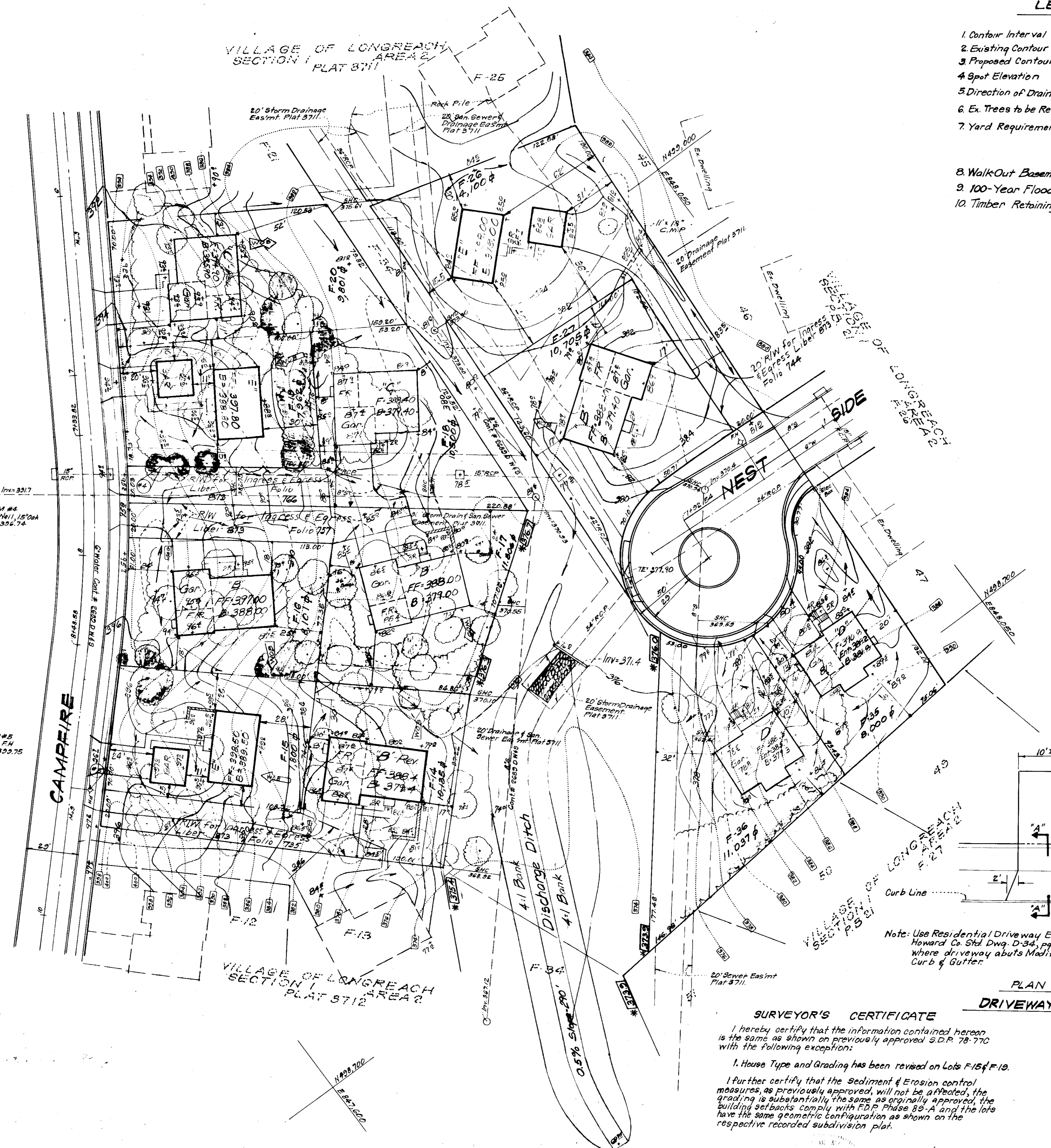
1. The Land included in this Plan is zoned New Town (S.F.M.D.)
2. The Lots shown on this Plan are covered by Final Development Plan Phase 83-A recorded in Plat Book 20 at Folios 140 & 147.
3. All coordinates are based on Maryland State Grid System. Elevations are based on U.S. Coast and Geodetic Survey Mean Sea Level Datum of 1929.
4. The Area covered in this submission is located on Tax Map No. 36.
5. The Total Area included in this submission is 0.362 Acres.
6. Campfire & Nest Side are public and existing.
7. Any damage to county owned Rights of Way or Paving shall be corrected at the developer's expense.
8. All roadways are public and existing.



S.E. ECKER 4576

BM#5  
Top FH  
Elev. 399.75

BM#5  
Top FH  
Elev. 399.75



**SURVEYOR'S CERTIFICATE**

I hereby certify that the information contained herein is the same as shown on previously approved S.D.P. 78-770 with the following exception:  
1. House Type and Grading has been revised on Lots F-15 & F-19.  
I further certify that the Sediment & Erosion control measures as previously approved, will not be affected, the grading is substantially the same as originally approved, the building setbacks comply with R.D.P. Phase 83-A and the lots have the same geometric configuration as shown on the respective recorded subdivision plat.

7/11/79 Date  
DONALD B. SACKETT  
Registered Land Surveyor  
Md. No. 6059

APPROVED FOR PUBLIC WATER AND PUBLIC SEWERAGE SYSTEMS, HOWARD COUNTY HEALTH DEPARTMENT	8-30-79
APPROVED: HOWARD COUNTY OFFICE OF PLANNING & ZONING	8-31-79
PLANNING DIRECTOR	8/31/79
CHIEF DIVISION OF LAND DEVELOPMENT	8/31/79
APPROVED FOR PUBLIC WATER AND PUBLIC SEWERAGE, STORM DRAINAGE SYSTEMS AND PUBLIC ROADS HOWARD COUNTY DEPARTMENT OF PUBLIC WORKS	8-28-79
DIRECTOR	8-28-79
CHIEF BUREAU OF ENGINEERING	8-28-79

<b>CLARK &amp; FINEFROCK &amp; SACKETT</b> ENGINEERS • PLANNERS • SURVEYORS 13135 LOCKWOOD DRIVE SILVER SPRING, MARYLAND 20904 (301) 593 3400		
DESIGNED J.M.E.	REVISED SITE DEVELOPMENT PLAN LOTS F-15 & F-19	SCALE 1"=30'
DRAWN K.I.W.	<b>COLUMBIA</b>	DRAWING 1 of 1
CHECKED J.M.E.	VILLAGE OF LONGREACH SECTION 1 AREA 2 6th ELECTION DISTRICT HOWARD COUNTY, MARYLAND	JOB NO.
DATE July, 1979	FOR: CAMPBELL MARDALL CONSTRUCTION, INC. 5115 Hesperus Drive Columbia, Md. 21044	FILE NO. 1306-X