

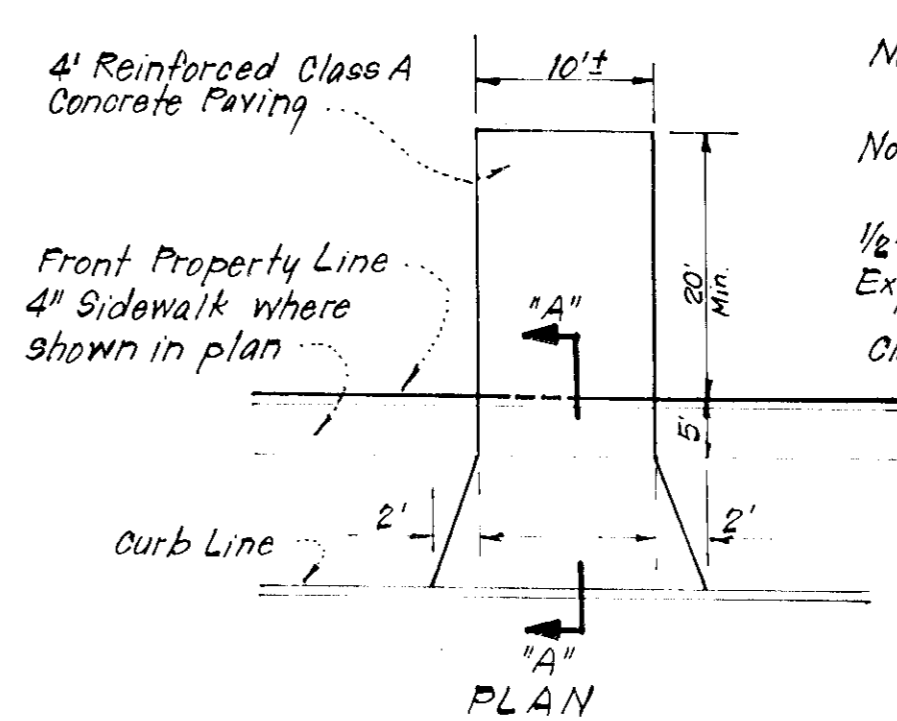
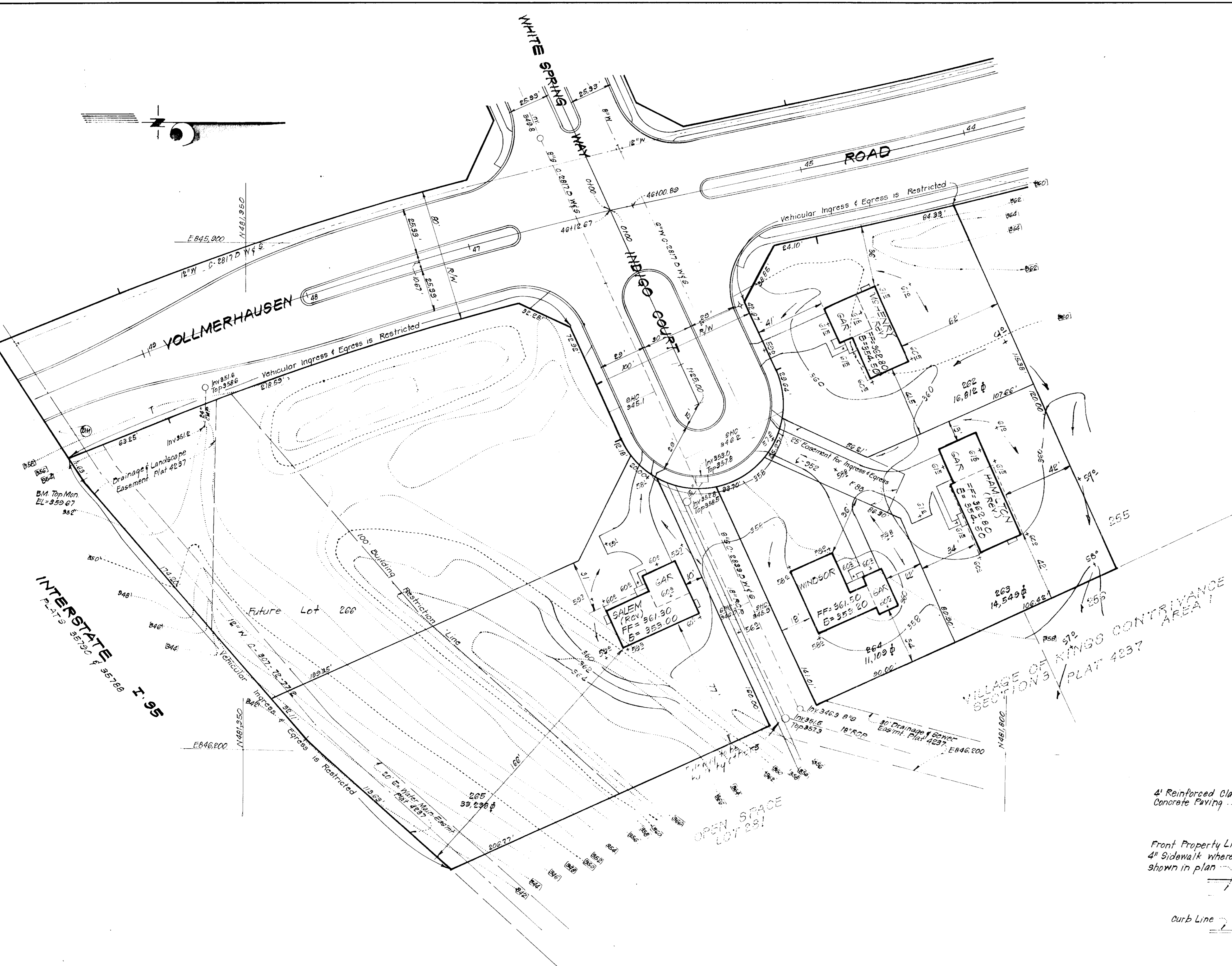
VICINITY MAP
Scale: 1"=2000'

GENERAL NOTES:

1. The Land included in this plan is zoned New Town (S.F.M.D.)
2. The Lots shown on this plan are covered by Final Development Plan Phase 160A Part I, Plat No 3054A, 162-176, Feb. 8, 1979
3. All coordinates are based on traverse controls for Columbia established by Maps Inc., in 1968 by Purdum & Jeschke in 1968, which controls were tied to Maryland Bureau of Control Survey monuments and to U.S. Coast & Geodetic Survey monuments in the Columbia area.
4. The area covered in this submission is located on Tax Map #42.
5. The total area included on this plan is 12.507 Acres.
6. All road ways are public & existing.
7. Any damage to county owned rights of way shall be corrected at the developer's expense.

LEGEND:

1. Contour Interval 2 Ft.
2. Existing Contour 360
3. Proposed Contour 360
4. Spot Elevation +605
5. Direction of Drainage



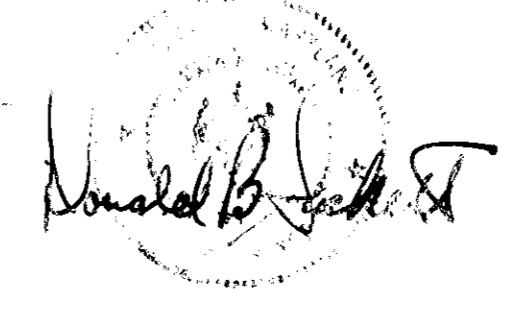
Note: Use Residential Driveway Entrance How. Co. Std. Dwg. D-34, pg. 89 except where driveway abuts Modified Comb. Curb & Gutter.
 Note: Materials and Construction shall be in accordance with How. Co. Road Constr. Code.
 1/2" Pre-Formed Bituminous Expansion Joint Filler
 Class A Concrete
 1/2" Pre-Formed Bituminous Expansion Joint Filler.
 6"x6" #6 Wire Mesh
 Modified Combination Curb & Gutter How. Co. Std. Dwg. D-40, pg. 95.

DRIVEWAY ABUTTING MODIFIED COMB CURB & GUTTER

APPROVED
 BOARD OF PUBLIC WORKS
 DATE 6-20-79

4 Lots

Sheet 1 4 Lots
 Sheet 2 21 Lots
 Sheet 3 19 Lots
 Total of 44 Lots



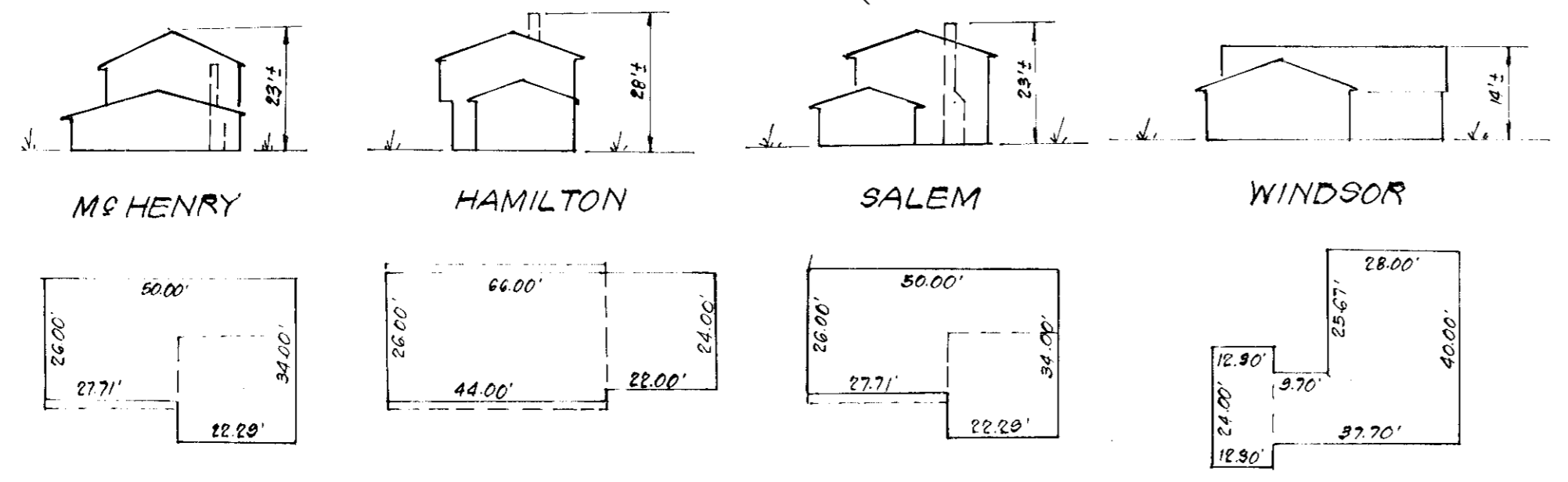
APPROVED FOR PUBLIC WATER AND PUBLIC SEWERAGE SYSTEMS,
 HOWARD COUNTY HEALTH DEPARTMENT
 COUNTY HEALTH OFFICER *John Ford* DATE 8-9-79

APPROVED HOWARD COUNTY OFFICE OF PLANNING & ZONING
 PLANNING DIRECTOR *John Ford* DATE 8-9-79

CHIEF DIVISION OF LAND DEVELOPMENT
 DATE 8-9-79

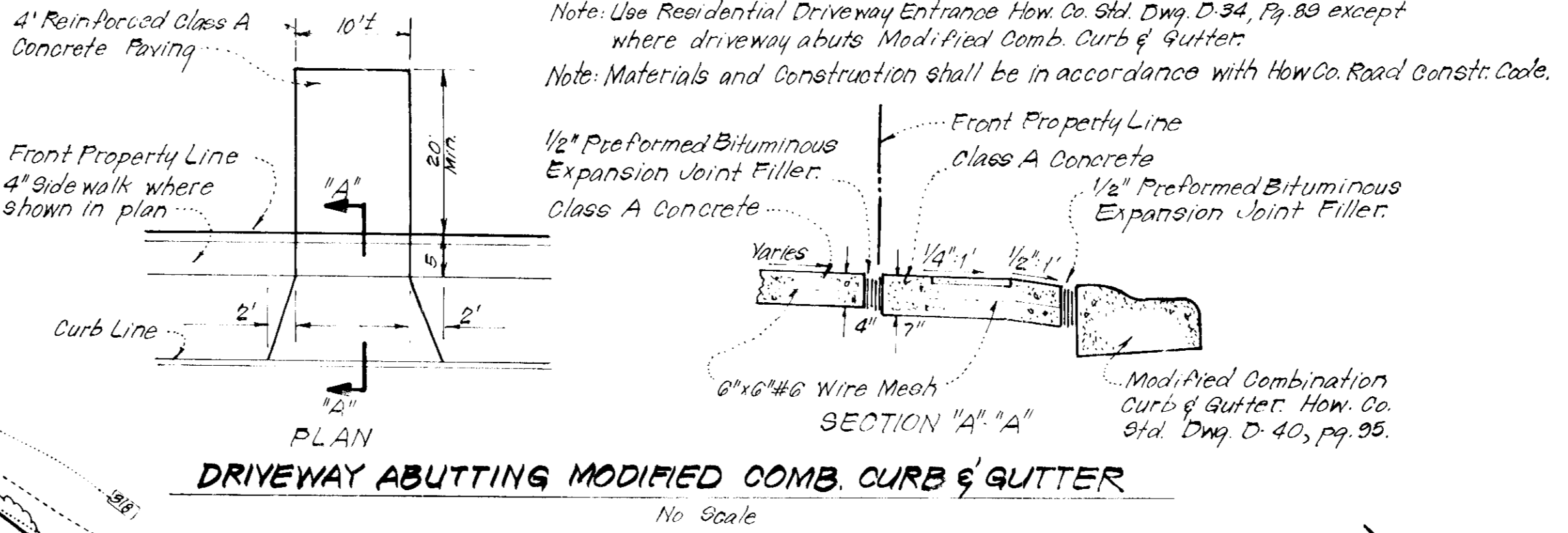
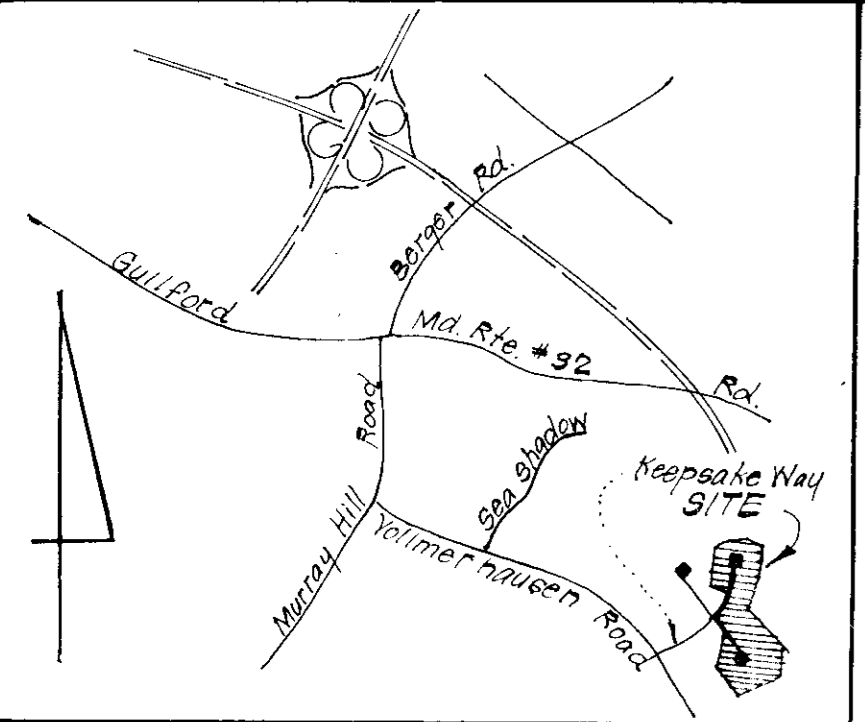
APPROVED FOR PUBLIC WATER AND PUBLIC SEWERAGE,
 STORM DRAINAGE SYSTEMS AND PUBLIC ROADS
 HOWARD COUNTY DEPARTMENT OF PUBLIC WORKS
 DIRECTOR *John Ford* DATE 8-9-79

CHIEF BUREAU OF ENGINEERING
 DATE 8-9-79

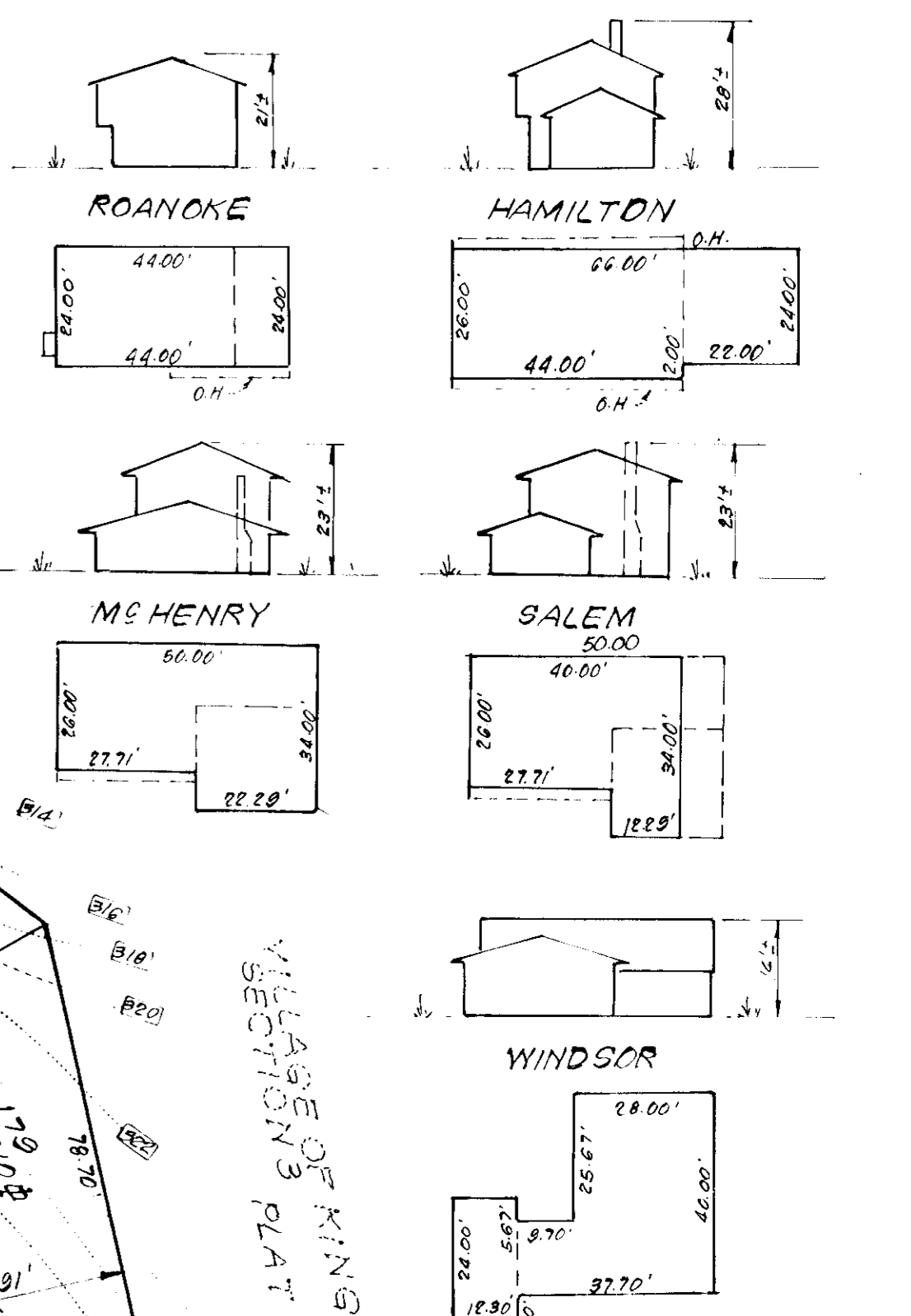


TYPICAL HOUSES
 No Scale

CLARK • FINEROCK & SACKETT ENGINEERS • PLANNERS • SURVEYORS 11315 LOCKWOOD DRIVE SILVER SPRING, MARYLAND 20904 (301) 593-3400		
DESIGNED J.M.E.	SITE DEVELOPMENT PLAN LOTS 135 THRU 141, 135 THRU 144 & LOTS 166 THRU 265, 163 THRU 183 COLUMBIA	SCALE 1"=30'
DRAWN K.I.W.	VILLAGE OF KINGS CONTRIVANCE SECTION 3 6th ELECTION DISTRICT HOWARD COUNTY, MARYLAND	DRAWING 1 of 7
CHECKED J.M.E.	FOR: THE RYLAND GROUP, INC. Suite 200 V.O.M. Office Bldg. Columbia, Maryland 21043	JOB NO. 78-1167
DATE May, 1979		FILE NO. 78-1167-X



- LEGEND:**
- 1. Contour Interval 2 Ft.
 - 2. Existing Contour
 - 3. Proposed Contour
 - 4. Spot Elevation
 - 5. Direction of Drainage
 - 6. Exist. Trees to be retained
 - 7. Retaining Wall
 - 8. Walk-out Basement



APPROVED
 PLANNING BOARD
 6-20-79
 [Signature]



APPROVED FOR PUBLIC WATER AND PUBLIC SEWERAGE SYSTEMS,
 HOWARD COUNTY HEALTH DEPARTMENT

APPROVED FOR PUBLIC WATER AND PUBLIC SEWERAGE,
 STORM DRAINAGE SYSTEMS AND PUBLIC ROADS,
 HOWARD COUNTY DEPARTMENT OF PUBLIC WORKS

PLANNING DIRECTOR [Signature] DATE 8-7-79

CHIEF DIVISION OF LAND DEVELOPMENT DATE

DIRECTOR [Signature] DATE

CHIEF BUREAU OF ENGINEERING DATE

CLARK • FINEROCK & SACKETT
 ENGINEERS • PLANNERS • SURVEYORS

13335 LICKWOOD DRIVE SILVER SPRING, MARYLAND 20904 (301) 593-3400

DESIGNED BY J.M.E. SITE DEVELOPMENT PLAN
 LOTS 179 THRU 181, 135 THRU 184 &
 LOTS 186 THRU 188, 163 THRU 183
COLUMBIA

DRAWN BY K.W. VILLAGE OF KINGS CONTRIVANCE
 SECTION 3 AREA 1
 8th ELECTION DISTRICT
 HOWARD COUNTY, MARYLAND

CHECKED BY J.M.E. FOR: The Ryland Group, Inc. (Col. Div.)
 Suite 200 V.O.M. Office Bldg.
 Columbia, Maryland 21043

DATE May, 1979

SCALE 1"=30'

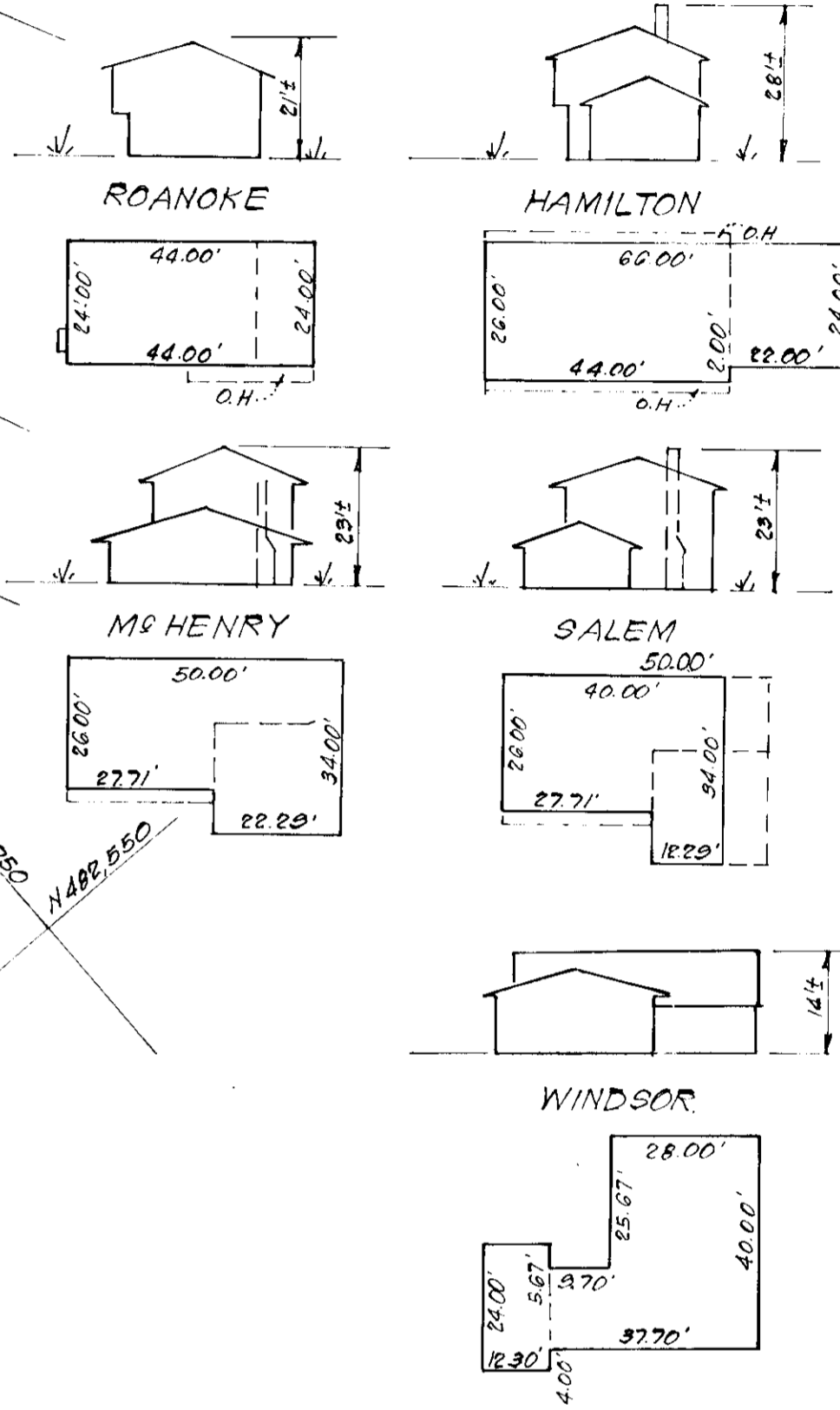
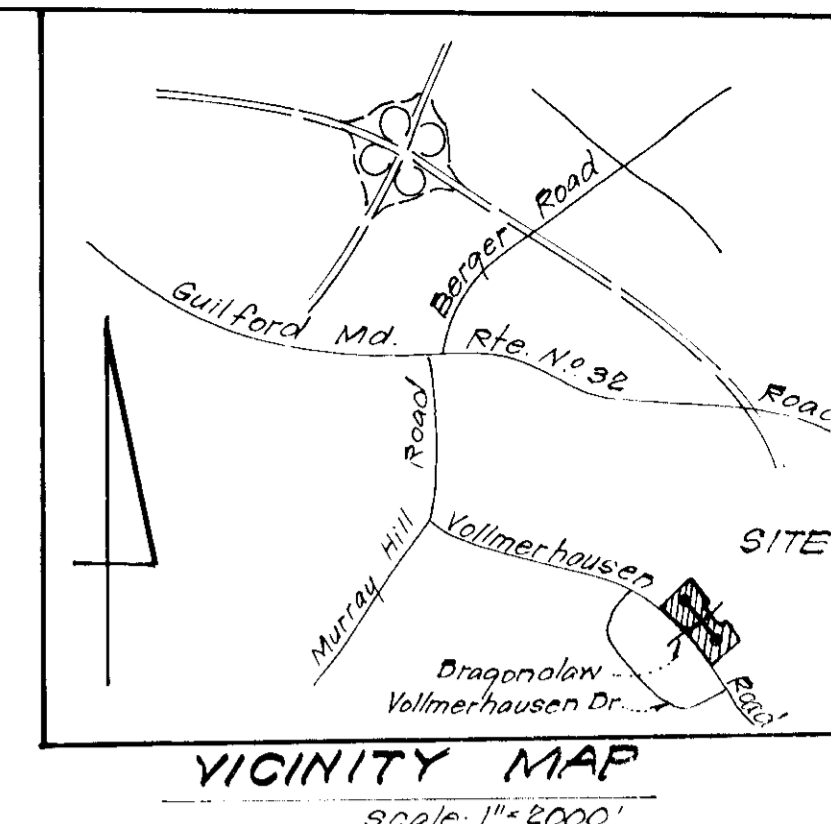
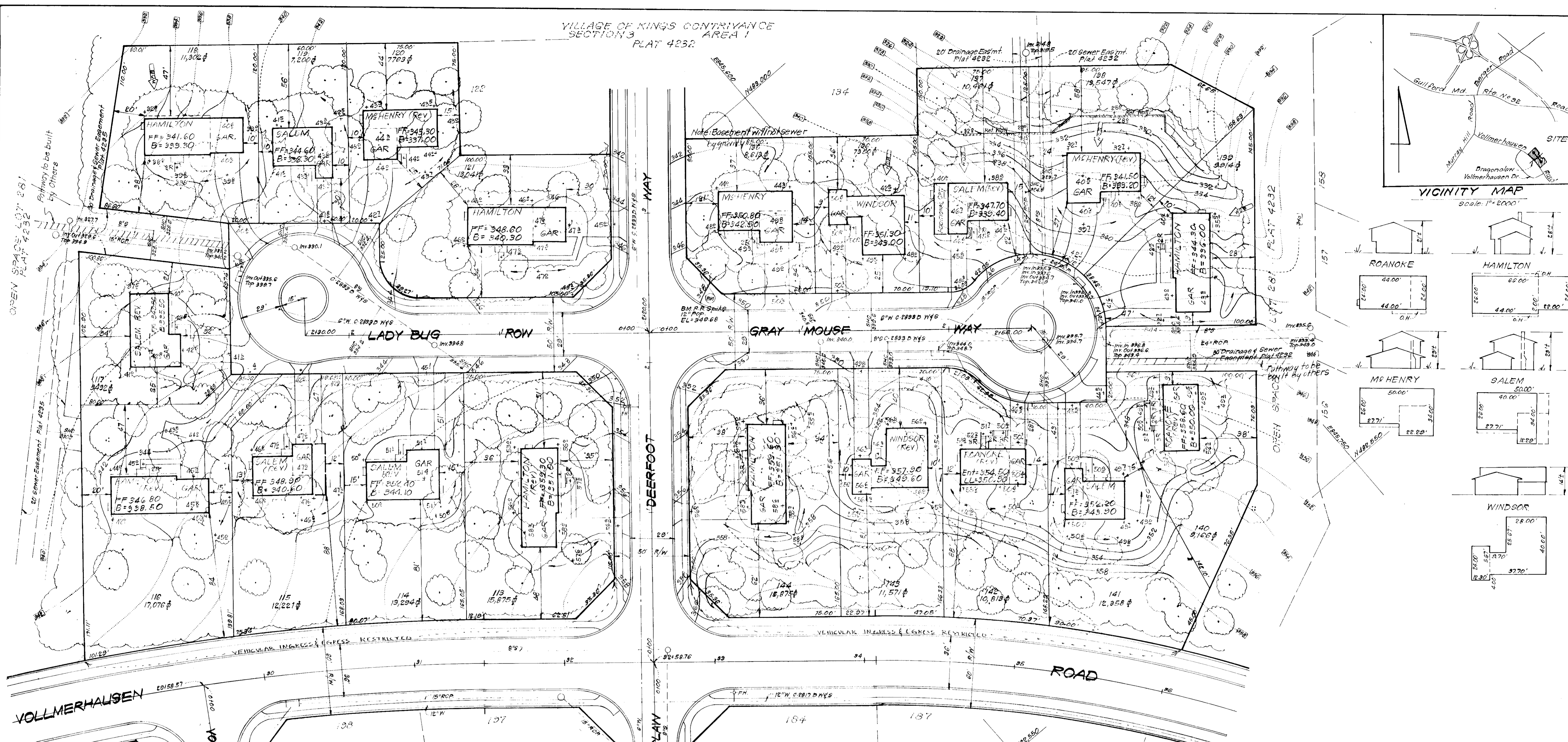
DRAWING 2077

JOB NO. 78-1107

FILE NO. 78-1107-X

SDP-19-147C

VILLAGE OF KINGS CONTRIVANCE SECTION 3 AREA 1 PLAT 4232



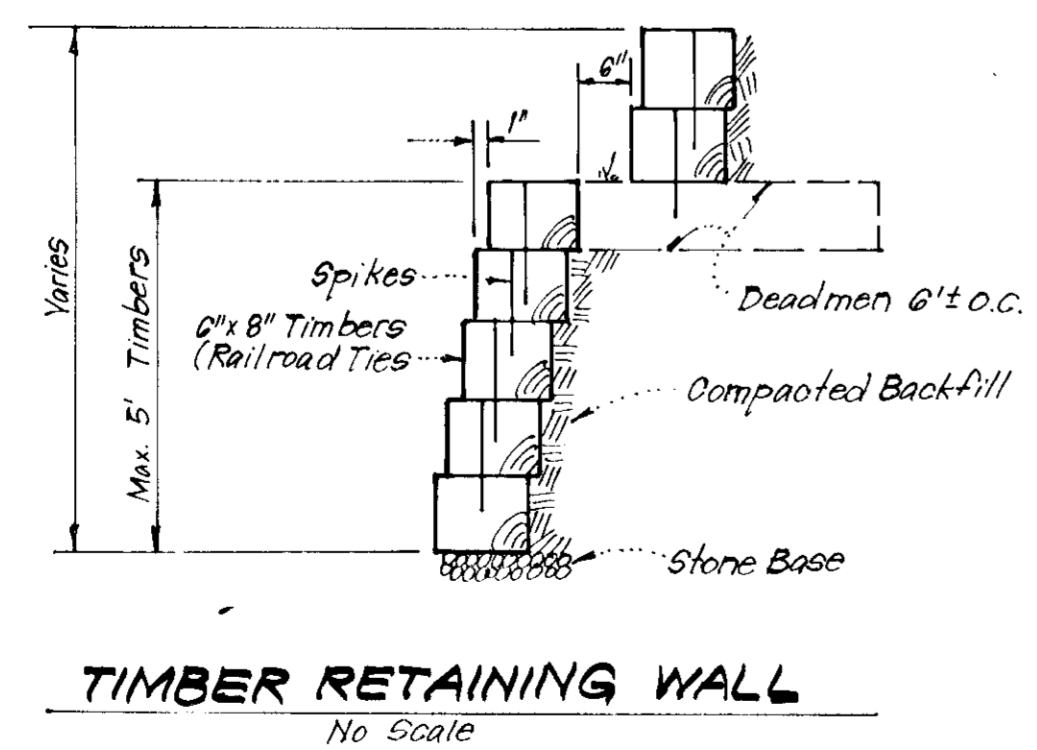
- LEGEND:**
- 1. Contour Interval 2 FT.
 - 2. Existing Contour
 - 3. Proposed Contour
 - 4. Spot Elevation
 - 5. Direction of Drainage
 - 6. Exist Trees to be retained
 - 7. Retaining Wall
 - 8. Walkout Basement

APPROVED
PLANNING BOARD
OF HOWARD COUNTY
DATE 6-20-79

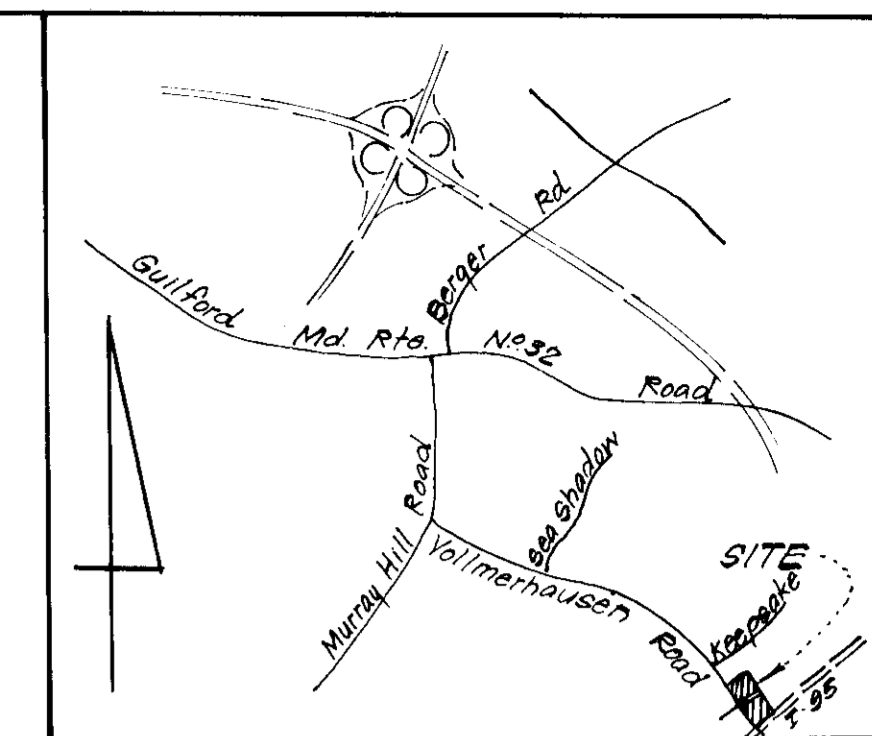
Note: For Bearings and distances not shown see Plat 4232.

CLARK • FINEFROCK & SACKETT ENGINEERS • PLANNERS • SURVEYORS 11315 LOCKWOOD DRIVE SILVER SPRING, MARYLAND 20904 (301) 593-3400		
DESIGNED	SITE DEVELOPMENT PLAN LOTS 113 THRU 121, 135 THRU 144 & LOTS 262 THRU 265, 169 THRU 183	SCALE
DRAWN		1"=30'
CHECKED		DRAWING
		3 of 7
		JOB NO.
		78-1167
		FILE NO.
		78-1167-X
DATE	MAY 1979	

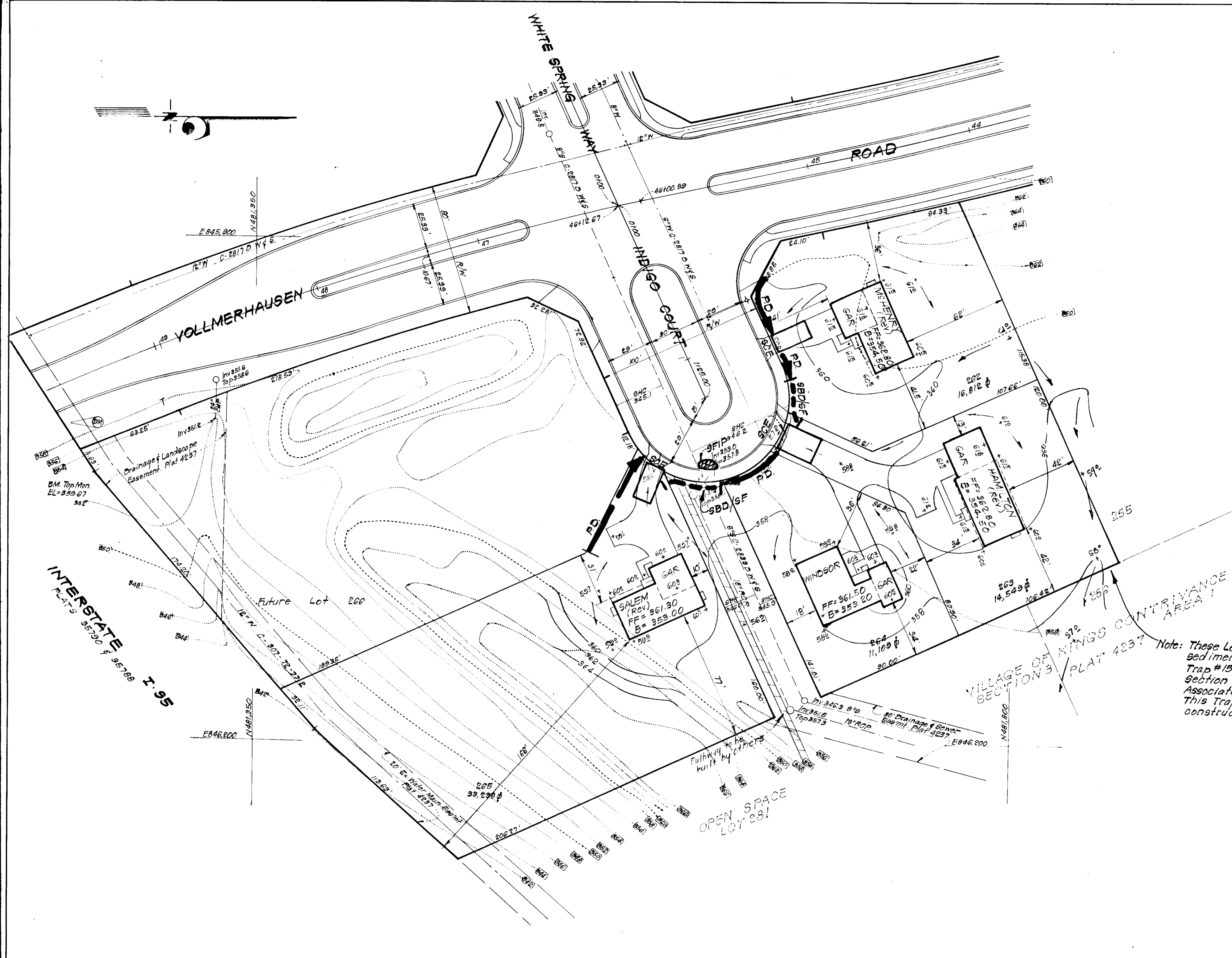
APPROVED FOR PUBLIC WATER AND PUBLIC SEWERAGE SYSTEMS, HOWARD COUNTY HEALTH DEPARTMENT	
DATE	8-9-79
APPROVED HOWARD COUNTY OFFICE OF PLANNING & ZONING	
PLANNING DIRECTOR	DATE
CHIEF DIVISION OF URBAN DEVELOPMENT	DATE
APPROVED FOR PUBLIC WATER AND PUBLIC SEWERAGE STORM DRAINAGE SYSTEMS AND PUBLIC ROADS HOWARD COUNTY DEPARTMENT OF PUBLIC WORKS	
DIRECTOR	DATE
CHIEF BUREAU OF ENGINEERING	DATE



19 Lots



VICINITY MAP
Scale: 1"=2000'



- LEGEND:**
- 1. Contour Interval 2 FT.
 - 2. Existing Contour
 - 3. Proposed Contour
 - 4. Spot Elevation
 - 5. Direction of Drainage
 - 6. Perimeter Dike
 - 7. Diversion Dike
 - 8. Straw Bale Dike or Silt Fence
 - 9. Stone Filter Inlet Protection
 - 10. Stone Construction Entrance
 - 11. Interceptor Dike

Note: These Lots drain into an existing sediment trap, shown on sht 34 of 37 Trap #15, Road Construction Plans, Y.O.C. Section 3, Area 1, prepared by Whitman, Regardt & Associates, Plan # F-79-44C. This trap shall be cleaned out and constructed in accordance with plan # F-79-44C.

APPROVED
PLANNING BOARD
OF HOWARD COUNTY
DATE: 6-20-79
JMM

APPROVED FOR PUBLIC WATER AND PUBLIC SEWERAGE SYSTEMS,
HOWARD COUNTY HEALTH DEPARTMENT
COUNTY HEALTH OFFICER: [Signature] DATE: 8-9-79
APPROVED: HOWARD COUNTY OFFICE OF PLANNING & ZONING
PLANNING DIRECTOR: [Signature] DATE: [Blank]
CHIEF DIVISION OF LAND DEVELOPMENT: [Signature] DATE: [Blank]
APPROVED FOR PUBLIC WATER AND PUBLIC SEWERAGE,
STORM DRAINAGE SYSTEMS AND PUBLIC ROADS
HOWARD COUNTY DEPARTMENT OF PUBLIC WORKS
DIRECTOR: [Signature] DATE: 8-8-79
CHIEF BUREAU OF ENGINEERING: [Signature] DATE: [Blank]

Reviewed for.....Howard.....S.C.D.
Name
and meets Technical Requirements
Winston Bonetta 7-31-79
Date
U.S. Soil Conservation Service
THIS DEVELOPMENT PLAN IS APPROVED
FOR SOIL EROSION AND SEDIMENT
CONTROL BY THE HOWARD SOIL
CONSERVATION DISTRICT.

Wm. Rowe Approved 7-31-79 Date

DEVELOPER'S CERTIFICATE
I certify that all development and/or construction will be done according to this plan of development and plan for Erosion and Sediment Control, and I also authorize periodic on-site inspection by the Howard Soil Conservation District or their authorized agents as are deemed necessary. Deviation from this plan will not be made unless authorized by the Howard Soil Conservation District.

Lowrie B. Sargent 5-18-79 Date

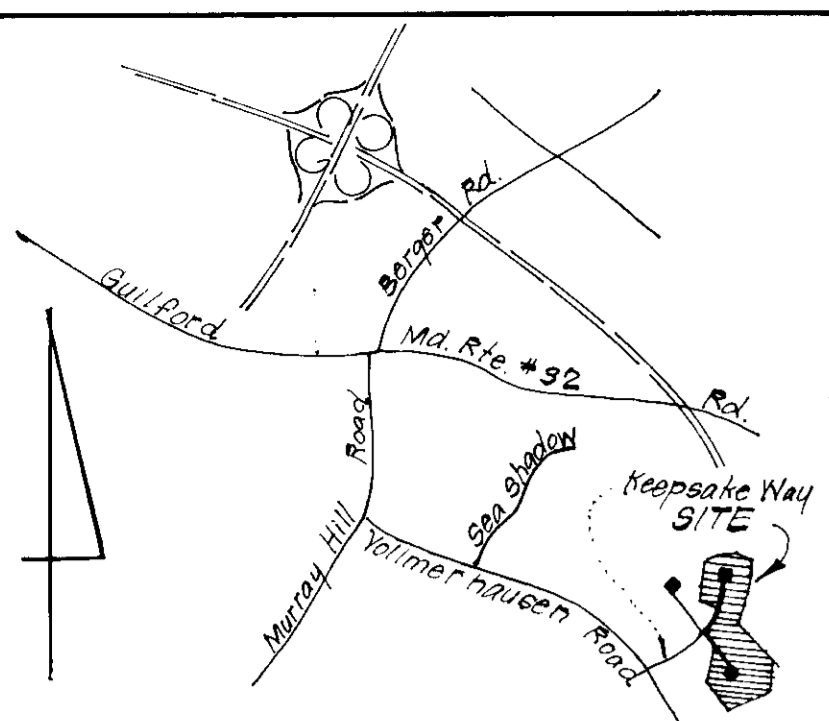
ENGINEER'S CERTIFICATE
I hereby certify that this plan for Erosion and Sediment Control represents a practical and workable plan based on my personal knowledge of the site conditions and that it was prepared in accordance with the requirements of the Howard Soil Conservation District.

Nelson Clark 5-18-79 Date



Note: For Bearings & Distances not shown see Plat 4237.

CLARK • FINEPROCK & SACKETT ENGINEERS • PLANNERS • SURVEYORS 11315 LOKWOOD DRIVE SILVER SPRING, MARYLAND 20904 (301) 593 3400	
DESIGNED JLG	SCALE 1"=30'
DRAWN KJW	DRAWING 4 of 7
CHECKED JLG	JOB NO. 78-1167
DATE May, 1979	FILE NO. 78-1167SE
SEDIMENT & EROSION CONTROL PLAN LOTS 183 THRU 187, 185 THRU 144 & LOTS 202 THRU 205, 163 THRU 183 COLUMBIA VILLAGE OF KINGS CONTRIVANCE SECTION 3 8th ELECTION DISTRICT HOWARD COUNTY, MARYLAND FOR: THE RYLAND GROUP, INC. Buite 200 YOUNG OFFICE BLDG. Columbia, Maryland 21043 SDP-79-147c	



Reviewed for Howard S.C.D.
Name
and meets Technical Requirements
Signature _____ Date _____
U.S. Soil Conservation Service
THIS DEVELOPMENT PLAN IS APPROVED
FOR SOIL EROSION AND SEDIMENT
CONTROL BY THE HOWARD SOIL
CONSERVATION DISTRICT.

DEVELOPER'S CERTIFICATE
I certify that all development and/or construction
will be done according to this plan of development
and plan for Erosion and Sediment Control, and I also
authorize periodic on-site inspection by the Howard
Soil Conservation District or their authorized agents
as are deemed necessary. Deviation from this plan
will not be made unless authorized by the Howard
Soil Conservation District.

Wm. Rouse
Approved _____ 7-31-79
Date

ZB Sargent 5-18-79
Lowrie B. Sargent Date

- LEGEND:**
- 1 Contour Interval 2 FT
 - 2 Existing Contour ---
 - 3 Proposed Contour - - - -
 - 4 Spot Elevation +105
 - 5 Direction of Drainage
 - 6 Exist. Trees to be retained
 - 7 Retaining Wall
 - 8 Walk-out Basement

ENGINEER'S CERTIFICATE
I hereby certify that this plan for Erosion and
Sediment Control represents a practical and workable
plan based on my personal knowledge of the site
conditions and that it was prepared in accordance
with the requirements of the Howard Soil Conserva-
tion District.

G. Nelson Clark 5-18-79
G. Nelson Clark Date



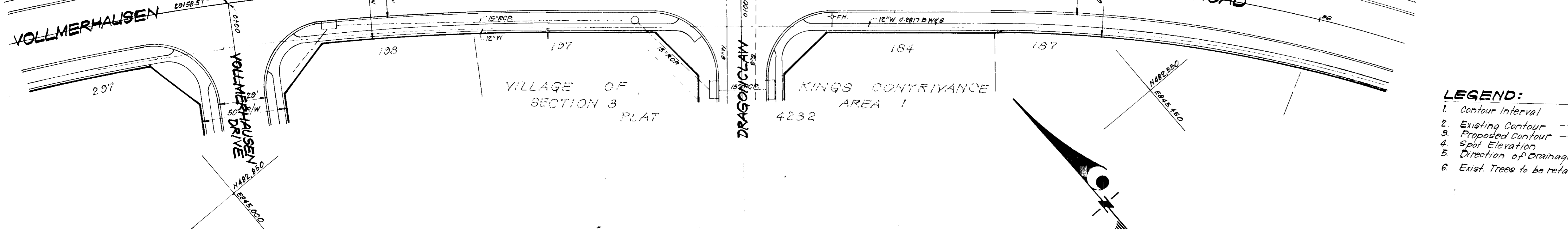
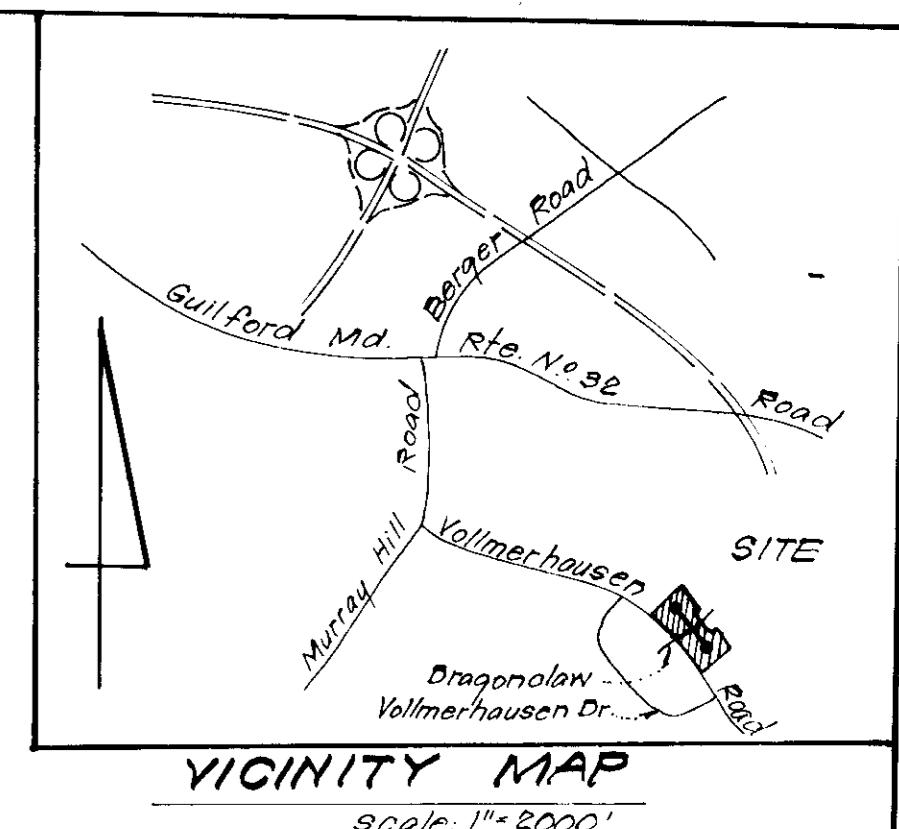
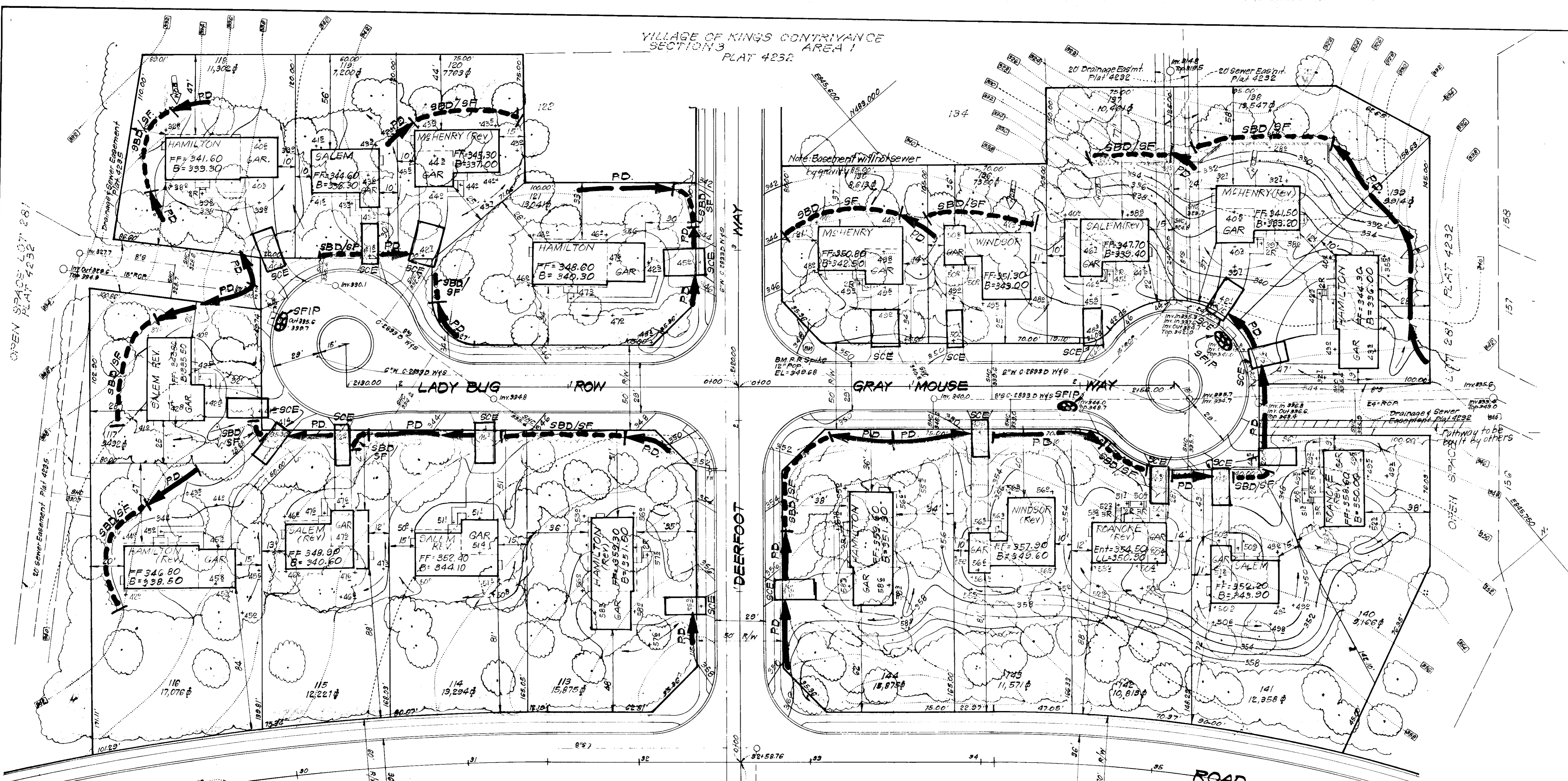
APPROVED FOR PUBLIC WATER AND PUBLIC SEWERAGE SYSTEMS,
HOWARD COUNTY HEALTH DEPARTMENT
J. L. S. 8-9-79
COUNTY HEALTH OFFICER DATE
APPROVED HOWARD COUNTY OFFICE OF PLANNING & ZONING
PLANNING DIRECTOR DATE
CHIEF DIVISION OF LAND DEVELOPMENT DATE
APPROVED FOR PUBLIC WATER AND PUBLIC SEWERAGE,
STORM DRAINAGE SYSTEMS AND PUBLIC ROADS
HOWARD COUNTY DEPARTMENT OF PUBLIC WORKS
J. L. S. 8-9-79
DIRECTOR DATE
CHIEF BUREAU OF ENGINEERING DATE

APPROVED
PLANNING BOARD
OF HOWARD COUNTY
DATE 6-20-79

Note: For Bearings & Distances of Individual
Lot Lines See Plans 4232 & 4237.

CLARK • FINEFROCK & SACKETT ENGINEERS • PLANNERS • SURVEYORS 11315 LOCKWOOD DRIVE SILVER SPRING, MARYLAND 20904 (301) 593-3400		
DESIGNED	J.L.S.	SCALE 1" = 30'
DRAWN	K.I.W.	DRAWING 50P7
CHECKED	J.L.S.	JOB NO. 78-1107
DATE	May, 1979	FILE NO. 78-1107SE
SEDIMENT & EROSION CONTROL PLAN LOTS 179 THRU 183 (IMVU 144 & 4) COLUMBIA VILLAGE OF KINGS CONTRIVANCE SECTION 3 AREA 1 6th ELECTION DISTRICT HOWARD COUNTY, MARYLAND FOR: The Ryland Group, Inc. (Col. Div.) Suite 200 V.O.M. Office Bldg. Columbia, Maryland 21043 SDP-79-147c		

VILLAGE OF KINGS CONTRIVANCE SECTION 3 AREA 1 PLAT 4232



- LEGEND:**
- 1. Contour Interval 2 Ft.
 - 2. Existing Contour
 - 3. Proposed Contour
 - 4. Spot Elevation
 - 5. Direction of Drainage
 - 6. Exist. Trees to be retained

APPROVED
PLANNING BOARD
OF HOWARD COUNTY
DATE 6-20-79

APPROVED FOR PUBLIC WATER AND PUBLIC SEWERAGE SYSTEMS,
HOWARD COUNTY HEALTH DEPARTMENT
[Signature] 8-9-79
COUNTY HEALTH OFFICER DATE

APPROVED HOWARD COUNTY OFFICE OF PLANNING & ZONING
PLANNING DIRECTOR DATE

CHIEF DIVISION OF LAND DEVELOPMENT DATE

APPROVED FOR PUBLIC WATER AND PUBLIC SEWERAGE,
STORM DRAINAGE SYSTEMS AND PUBLIC ROADS
HOWARD COUNTY DEPARTMENT OF PUBLIC WORKS
[Signature] 5-18-79
DIRECTOR DATE

CHIEF BUREAU OF ENGINEERING DATE

Reviewed for Howard S.C.D.
Name
and meets Technical Requirements
[Signature] 7-31-79
Signature Date
U.S. Soil Conservation Service

THIS DEVELOPMENT PLAN IS APPROVED
FOR SOIL EROSION AND SEDIMENT
CONTROL BY THE HOWARD SOIL
CONSERVATION DISTRICT.

[Signature] 7-31-79
Approved Date

DEVELOPER'S CERTIFICATE
I certify that all development and/or construction
will be done according to this plan of development
and plan for Erosion and Sediment Control, and I also
authorize periodic on-site inspection by the Howard
Soil Conservation District or their authorized agents
as are deemed necessary. Deviation from this plan
will not be made unless authorized by the Howard
Soil Conservation District.

[Signature] 5-18-79
Lowrie B. Sargent Date

ENGINEER'S CERTIFICATE
I hereby certify that this plan for Erosion and
Sediment Control represents a practical and workable
plan based on my personal knowledge of the site
conditions and that it was prepared in accordance
with the requirements of the Howard Soil Conserva-
tion District.

[Signature] 5-18-79
G. Nelson Clark Date



Note: For Bearings and distances not shown see Plat 4232.

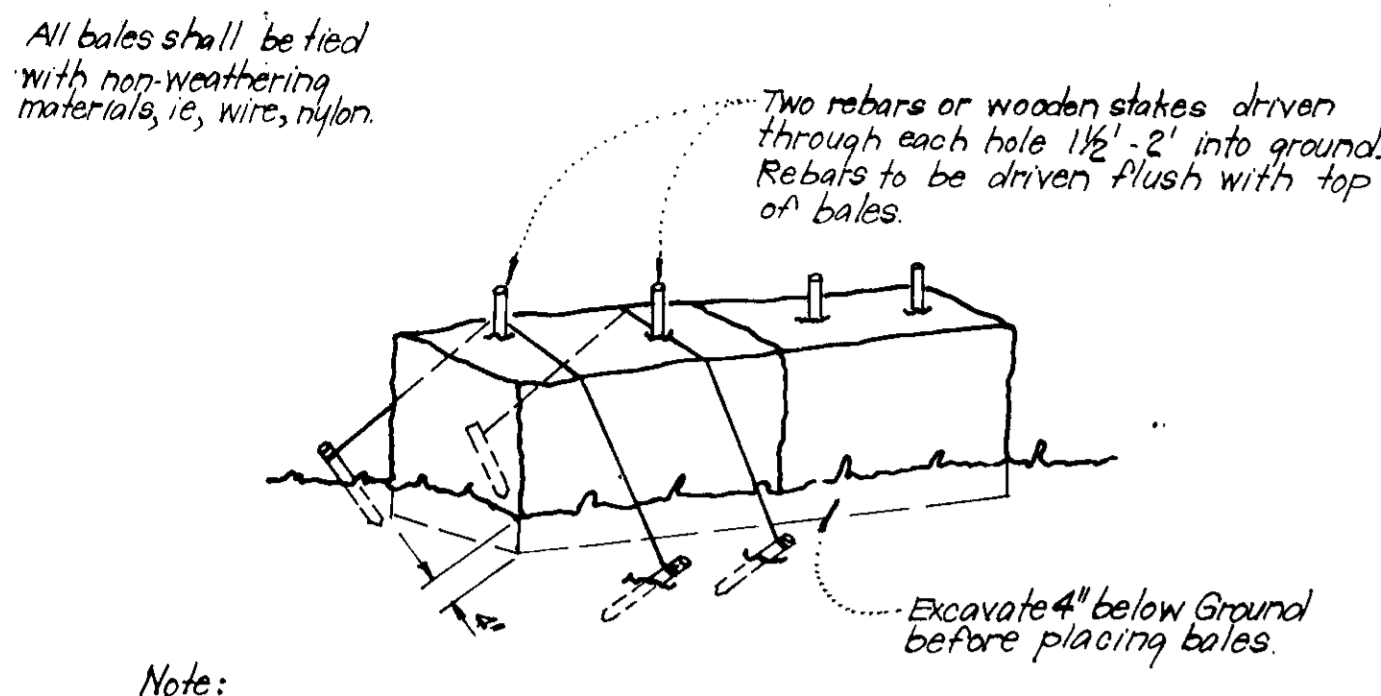
CLARK • FINEFROCK & SACKETT ENGINEERS • PLANNERS • SURVEYORS 13315 LOCKWOOD DRIVE SILVER SPRING, MARYLAND 20904 (301) 593-3400			
DESIGNED	JLS	SCALE	1"=30'
DRAWN	K.I.W.	DRAWING	6047
CHECKED	JLS	JOB NO.	78-1167
DATE	May, 1979	FILE NO.	78-11679E

SEDIMENT EROSION CONTROL PLAN
 LOTS 113 THRU 121, 135 THRU 144 &
 LOTS 262 THRU 265, 169 THRU 183
COLUMBIA
 VILLAGE OF KINGS CONTRIVANCE
 SECTION 3
 8TH ELECTION DISTRICT
 HOWARD COUNTY, MARYLAND
 FOR: THE RYLAND GROUP INC.
 Suite 200 V.O.M. Office Bldg.
 Columbia, Maryland 21044

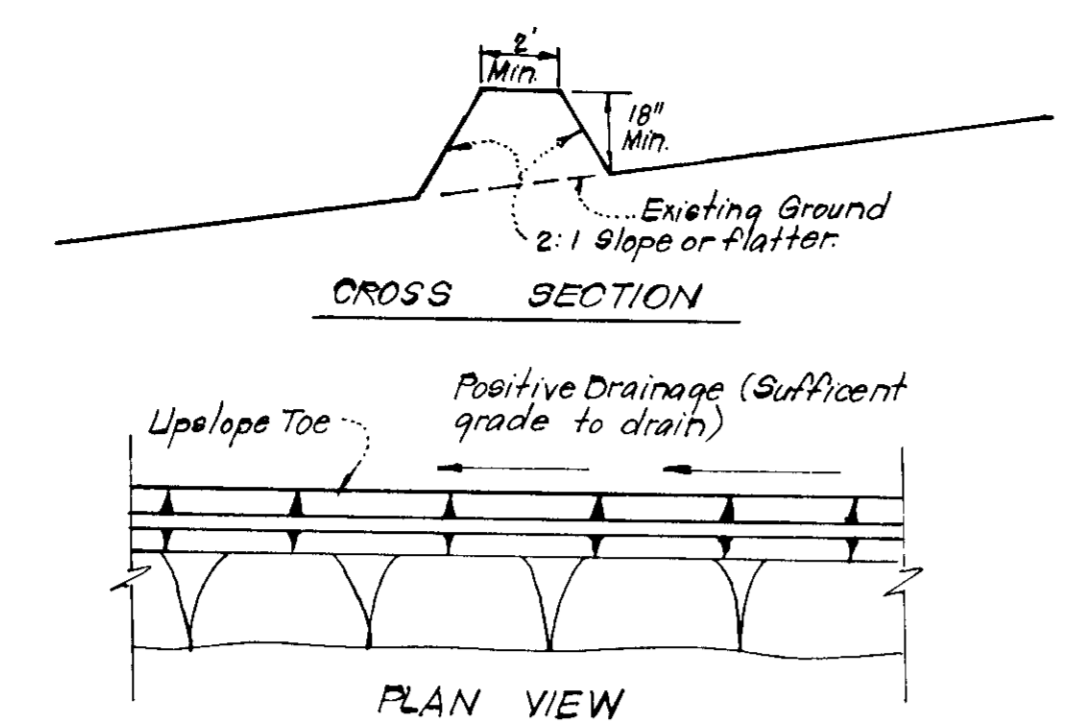
GENERAL NOTES

- Grading Permits shall be obtained prior to installation of Sediment Control & Grading.
- All Sediment and Erosion Control Measures will be installed and stabilized according to this plan prior to any other grading, clearing or disturbance of the existing surface of the site. See note #6 for stabilization except that the seed mixture will be annual rye applied at a rate of 1.4 lbs/1000 sq. ft.
- Notify the Bureau of Inspections and Permits at least 24 hrs before starting any work.
- All Sediment Control Practices to conform to the "Standards and Specifications for Soil Erosion and Sediment Control in Developing Areas" and shall be adjusted to meet actual field conditions.
- Stabilization of Disturbed ground to be done as soon after construction as possible.
- All grading shall be treated in accordance with the following Specifications:
 - Seed - certified 85% germination applied at the rate of 3 lbs/1000 sq. ft. Mixture - 40% Kentucky Blue, 20% Chewings Fescue, 20% Kentucky 31 and 20% annual rye.
 - Fertilizer - 10-10-10 applied at a rate of 23 lbs/1000 sq. ft. Ground Agricultural Lime or Dolomitic Lime applied at a rate of 46 lbs/1000 sq. ft.
 - Mulch - Weed free grain straw applied at a rate of 46 lbs/1000 sq. ft. Mulch shall be secured to the ground by any approved method i.e.; asphalt tacks, chemical binder, etc.
 - All Sod used shall be Maryland State Certified.
- All Structural Sediment Control Measures are to remain in place until permission for their removal has been obtained from the Bureau of Inspections and Permits.
- On Site Inspection and Maintenance of all Sediment Control Measures including clean out of Sediment Traps and dikes, and proper establishment of all planned vegetative measures will be the responsibility of the developer or his representative on the site, on a continuing day to day basis.
- It will be the developers responsibility to provide additional Sediment & Erosion Control Devices to protect stabilized areas during construction.
- The Contractor shall keep all public roads free of sediment deposits left from traffic leaving construction site.
- Stabilized Construction Entrances shall be placed at all construction entrances.
- If houses are to be constructed on an "As-Sold" basis at random, Single Lot Sediment Control, as shown on this sheet, shall be implemented.
- Total Amount of Straw Bales or Silt Fence shown = 1540 LF
- SITE ANALYSIS:

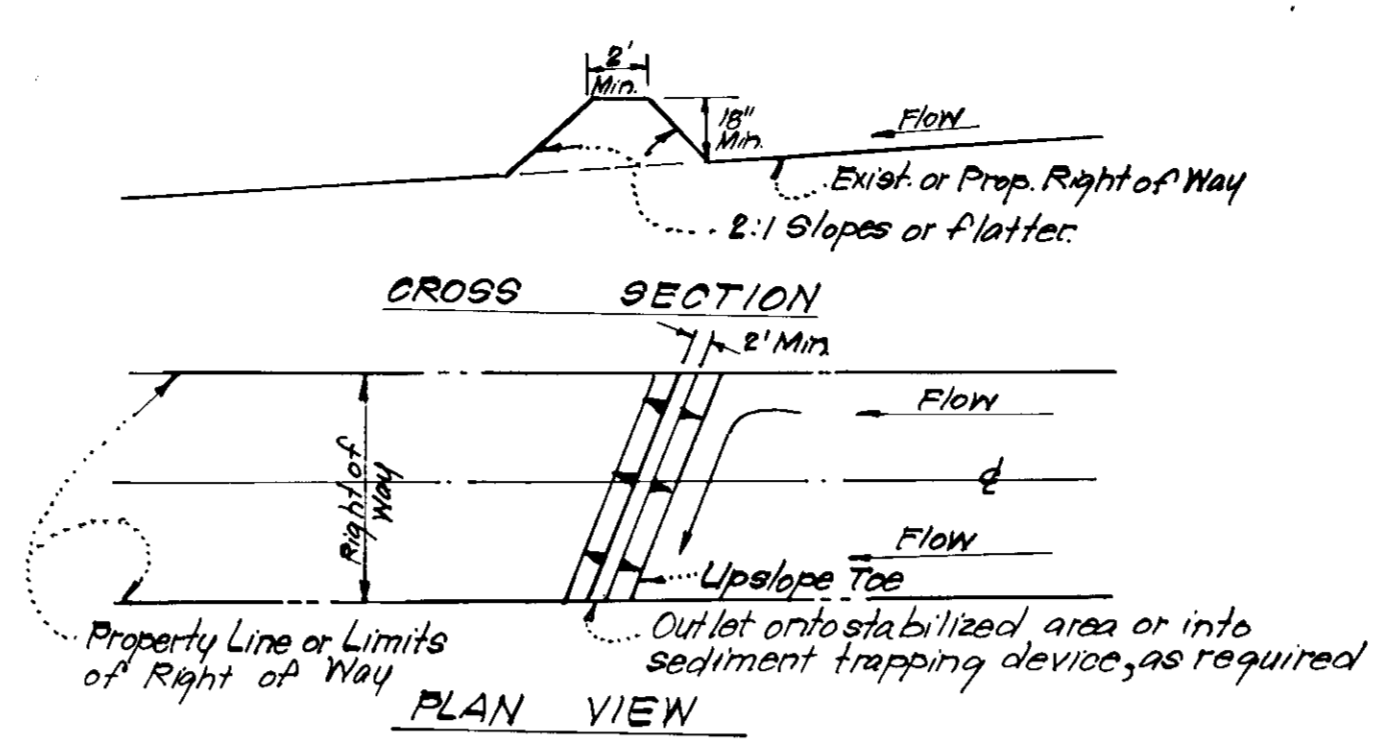
A. Total Area:	12.507	Acres
B. Area to be Roofed:	1.374	Acres
C. Area to be Paved:	0.696	Acres
D. Area to be Seeded:	5.485	Acres
E. Area Undisturbed:	4.952	Acres
- CONSTRUCTION SEQUENCE:
 - Install Sediment & Erosion Control Devices and Stabilize Diversion Dikes
 - Excavate for Foundations and Rough Grade
 - Erect Structures, Driveways and Sidewalks
 - Final Grade and Stabilize in accordance with note #6.
- Approval of this plan is conditional upon the approval of Sediment Control Plan for the off-site waste or borrow area prior to the import of any borrow or export of waste to or from this site.



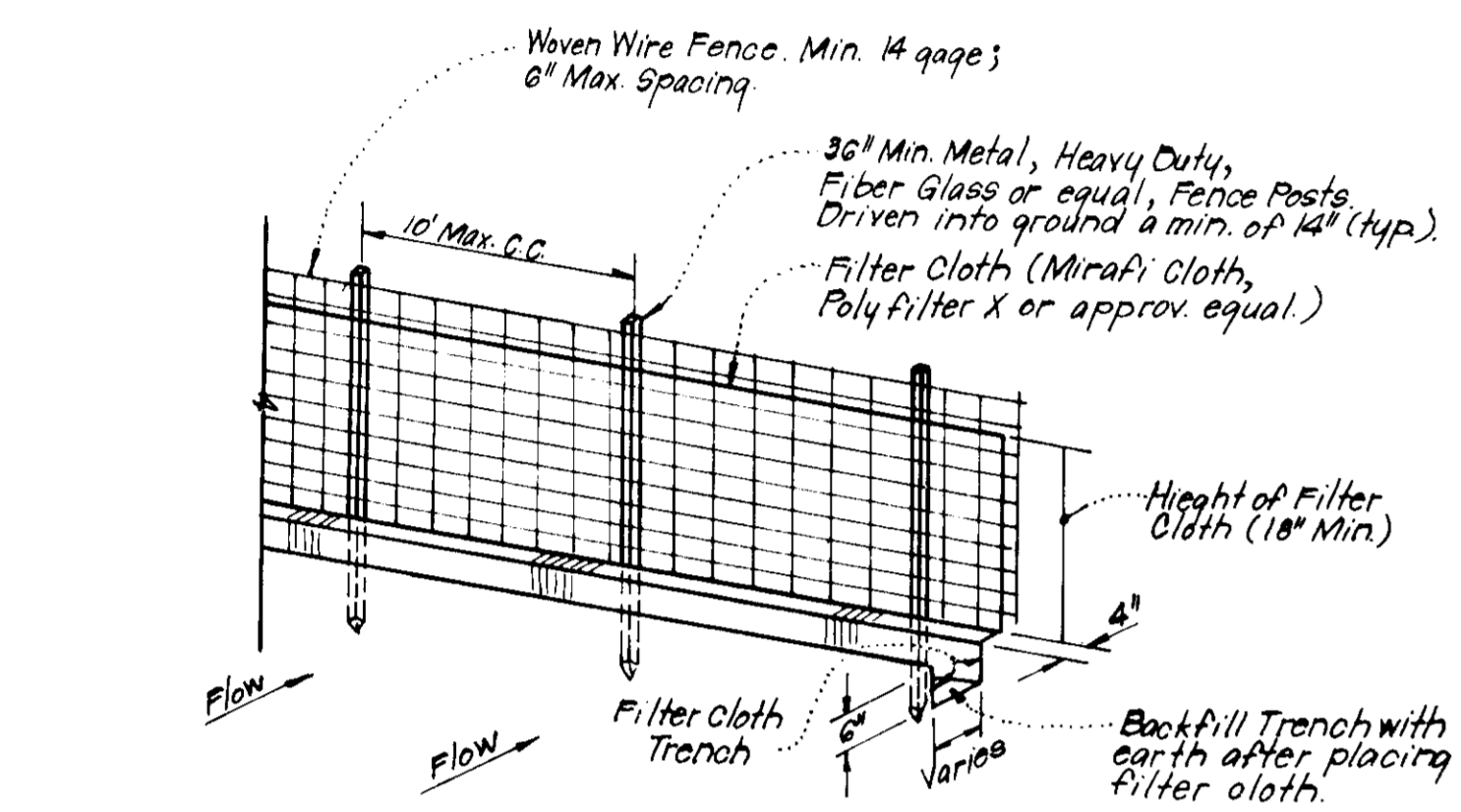
TYPICAL STRAW BALE DIKE DETAIL (S.B.D.)
No Scale



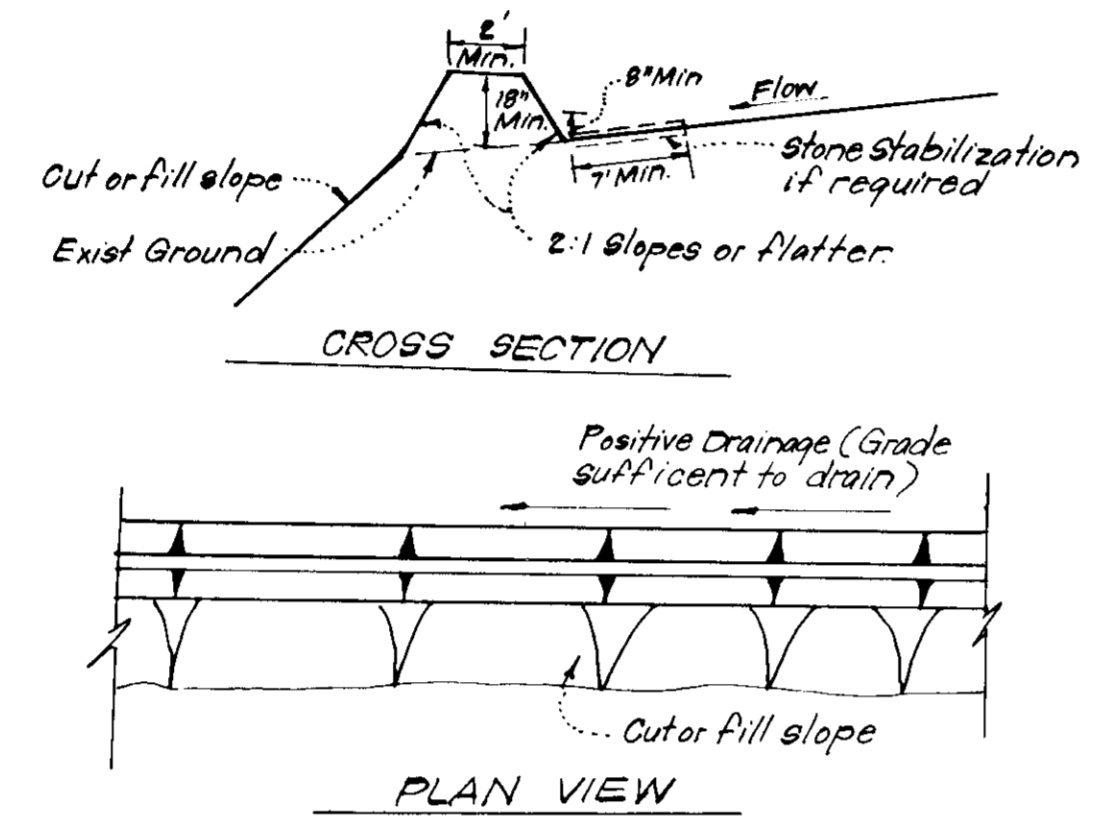
TYPICAL PERIMETER DIKE DETAIL (P.D.)
No Scale



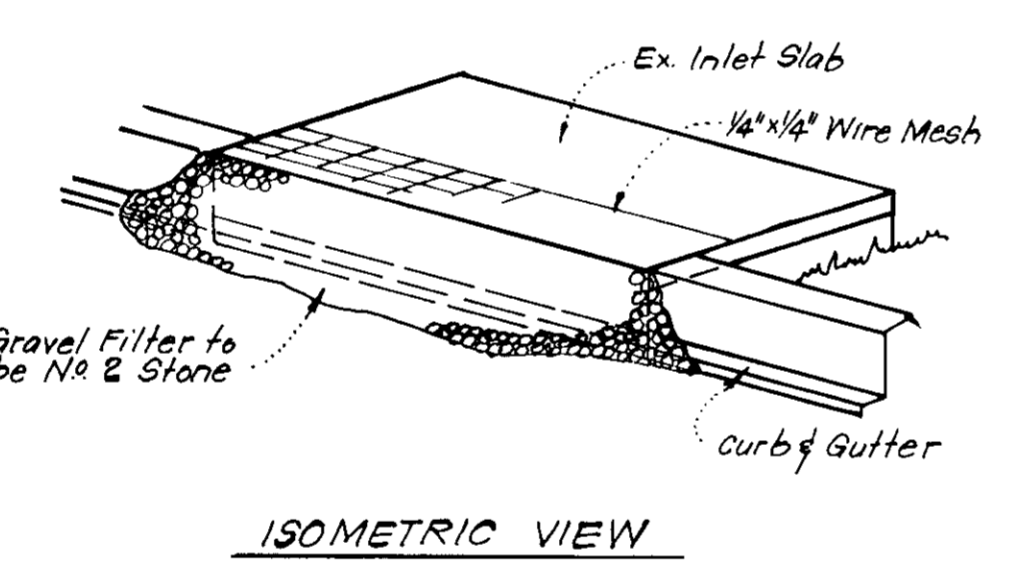
INTERCEPTOR DIKE DETAIL (I.D.)
No Scale



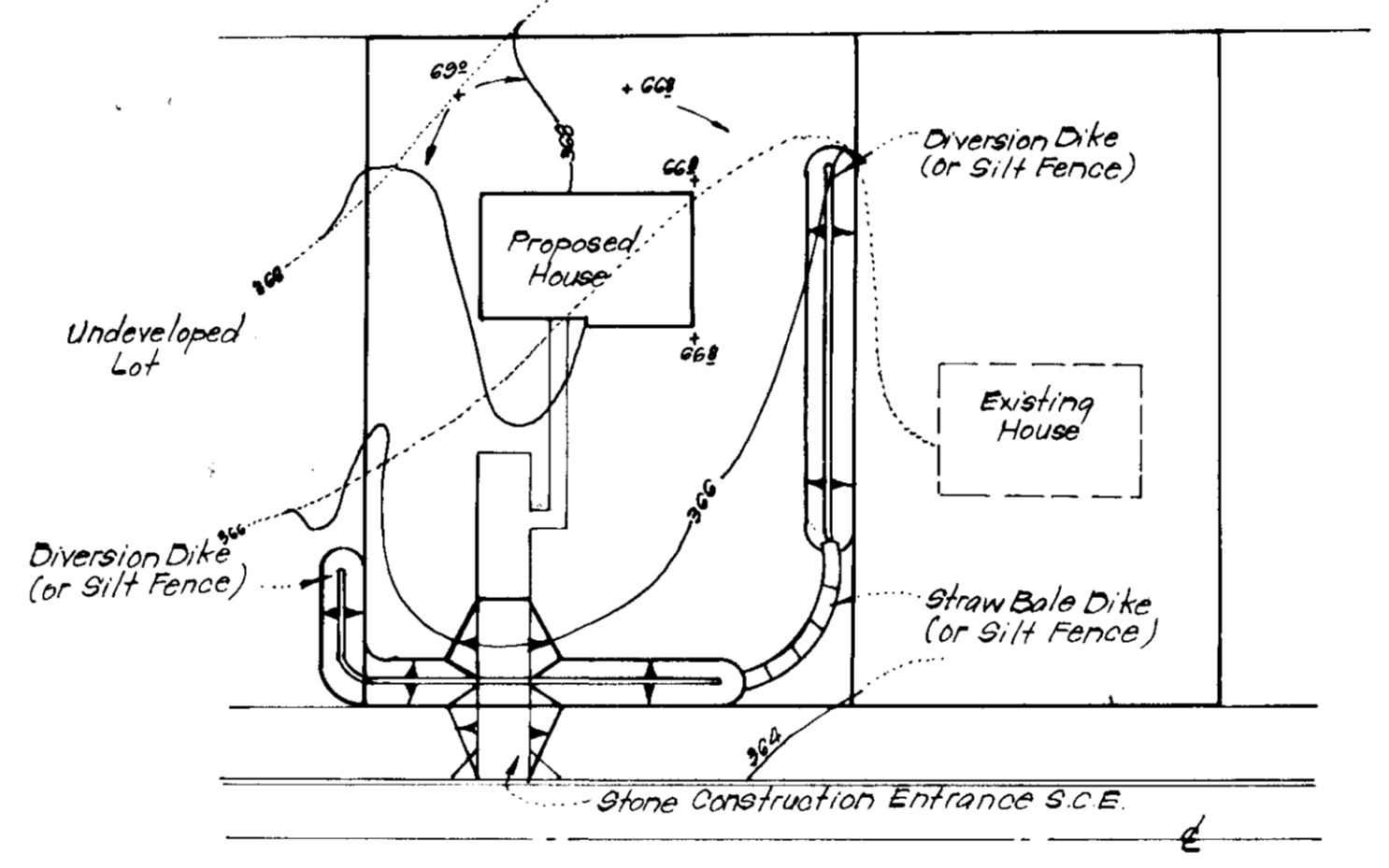
TYPICAL SILT FENCE DETAIL (S.F.)
No Scale



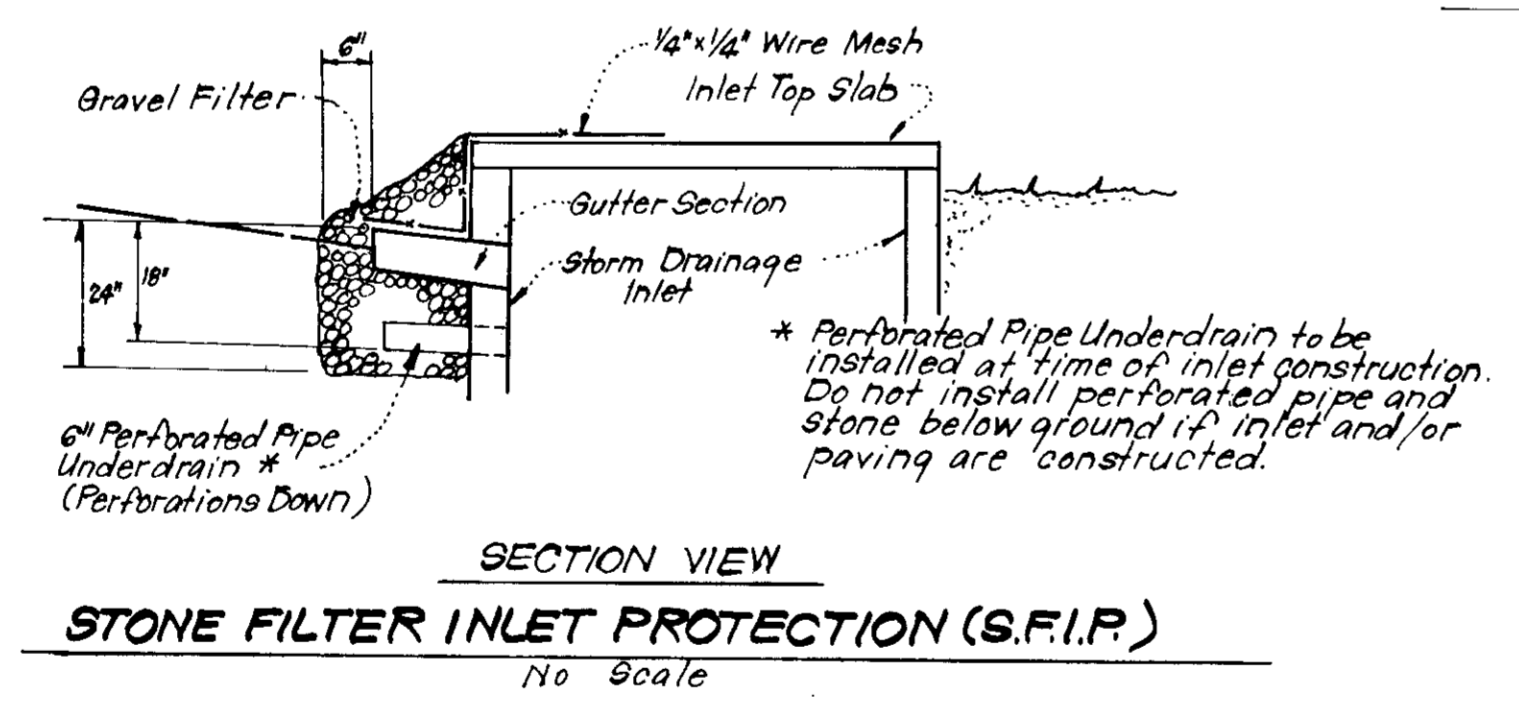
TYPICAL DIVERSION DIKE DETAIL (D.D.)
No Scale



STONE CONSTRUCTION ENTRANCE DETAIL (S.C.E.)
No Scale



TYPICAL SINGLE LOT SEDIMENT CONTROL PLAN
No Scale



STONE FILTER INLET PROTECTION (S.F.I.P.)
No Scale

APPROVED FOR PUBLIC WATER AND PUBLIC SEWERAGE SYSTEMS, HOWARD COUNTY HEALTH DEPARTMENT
DATE: 8-1-77

APPROVED HOWARD COUNTY OFFICE OF PLANNING & ZONING
DATE: 8-1-77

APPROVED FOR PUBLIC WATER AND PUBLIC SEWERAGE STORM DRAINAGE SYSTEMS AND PUBLIC ROADS HOWARD COUNTY DEPARTMENT OF PUBLIC WORKS
DATE: 8-1-77

CHIEF BUREAU OF ENGINEERING

Reviewed for: Howard S.C.D.
Name
and meets Technical Requirements
Winters
Signature
Date: 7-31-77
U.S. Soil Conservation Service

THIS DEVELOPMENT PLAN IS APPROVED FOR SOIL EROSION AND SEDIMENT CONTROL BY THE HOWARD SOIL CONSERVATION DISTRICT.

DEVELOPER'S CERTIFICATE

I certify that all development and/or construction will be done according to this plan of development and plan for Erosion and Sediment Control, and I also authorize periodic on-site inspection by the Howard Soil Conservation District or their authorized agents as are deemed necessary. Deviation from this plan will not be made unless authorized by the Howard Soil Conservation District.

W. B. Sargent
Signature
Date: 5-18-79
Lowrie & Sargent

ENGINEER'S CERTIFICATE

I hereby certify that this plan for Erosion and Sediment Control represents a practical and workable plan based on my personal knowledge of the site conditions and that it was prepared in accordance with the requirements of the Howard Soil Conservation District.

W. Nelson Clark
Signature
Date: 5-18-79
W. Nelson Clark

APPROVED
PLANNING BOARD
OF HOWARD COUNTY
DATE: 6-20-79
Sum

CLARK • FINEPROCK & SACKETT ENGINEERS • PLANNERS • SURVEYORS 11315 LOCKWOOD DRIVE SILVER SPRING, MARYLAND 20904 (301) 593-3400		
DESIGNED	J.L.S.	SCALE
DRAWN	K.I.W.	As Shown
CHECKED	J.L.S.	7 of 7
DATE	May 1979	JOB NO.
COLUMBIA VILLAGE OF KINGS CONTRIVANCE SECTION 3 AREA 1 ELECTION DISTRICT HOWARD COUNTY, MARYLAND FOR: The Ryland Group, Inc. (Col. Div.) Suite 200 V.O.M. Office Bldg. Columbia, Maryland 21043		
		FILE NO.
		78-11678E