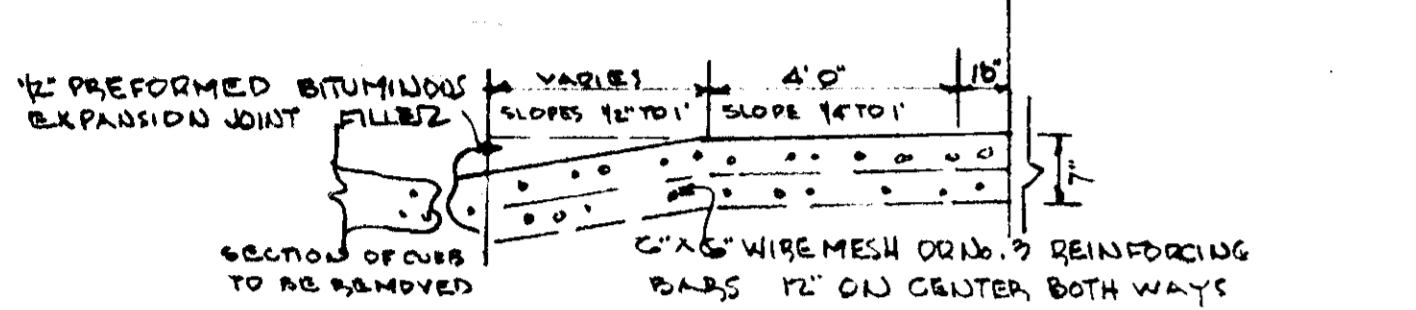


TYPICAL SECTION - PRIVATE PAVING



TYPICAL SECTION - DRIVEWAY PAVING

VEGETATIVE COVER OPTIONS

February 1 to May 1	1. Sod
May 1 to August 1	2. Seed and mulch
August 15 to November 1	1. od 2. Mulch, anchor, top, then seed during next seed period.
November 1 to February 1	1. Sod 2. Seed and mulch

1. Sod-delay until next period if ground is frozen.
2. Mulch, anchor, top, then seed during next seed period.

SEDIMENT CONTROL NOTES

- OBTAIN A GRADING PERMIT
- Notify the Howard County Soil Conservation District at least 24 hours before starting any work. Phone 465-5000 ext. 328-465-3100.
- All sediment control devices are to remain in place until permission for removal has been obtained from the Howard Soil Conservation District.
- Sediment control measures will be installed according to the plan prior to any other grading, clearing or disturbance of the existing surface of the site.
- On site inspection and maintenance of all sediment control measures and proper establishment of all planned vegetative measures will be the responsibility of the developer or his representative on the site on a continuing day to day basis.

PROCEDURE - PERMANENT SEEDING

- Apply 50 lbs/1000 square foot of limestone.
- Apply fertilizer rate 25 lbs of 18-10-10 per 1000 square foot depending on the soil test.
- Plow or disc fertilizer and limestone into soil depth of 3 inches.
- Seed with RT 11 tall fescue at rate of 50 lbs/1000 square foot or other S.C.S. approved seeding plan.
- Mulch with small grain straw 1.5 to 2 tons per acre (75 square feet-90/1000).
- Anchor mulch with sprayed asphalt at 0.1 gal/square yard.

SEQUENCE OF CONSTRUCTION

- Install sediment control devices.
- Rough grade.
- Start construction.
- Final grade.
- Stabilize all areas.
- Final construction.
- Remove all sediment control devices.

HINKINS ASSOCIATES
ENGINEERS/SURVEYORS
231 JOSEPH SQUARE
COLUMBIA, MARYLAND 21045
730-9060

REVIEWER

"I certify that this plan for erosion and sediment control represents a practical and workable plan based on my personal knowledge of the site conditions and that it was prepared in accordance with the requirements of the Howard Soil Conservation District."

Signature of Engineer: *Walter Park* DATE: 6/20/79
116 SOIL CONSERVATION SERVICES CENTER PARK #5529

DEVELOPER

"I certify that all development and/or construction will be done according to this plan of development and plan for erosion and sediment control, and I also authorize periodic on-site inspection by the Howard Soil Conservation District or their authorized agents, as are deemed necessary. Deviation from this plan will not be made unless authorized by the Howard Soil Conservation District."

Signature of Developer: *Thomas A. Hinkins* DATE: 6/22/79

HOWARD COUNTY SOIL CONSERVATION DISTRICT

This development plan is approved for soil erosion and sediment control by the Howard Soil Conservation District.

Signature: *Les Estep* DATE: 5-22-79

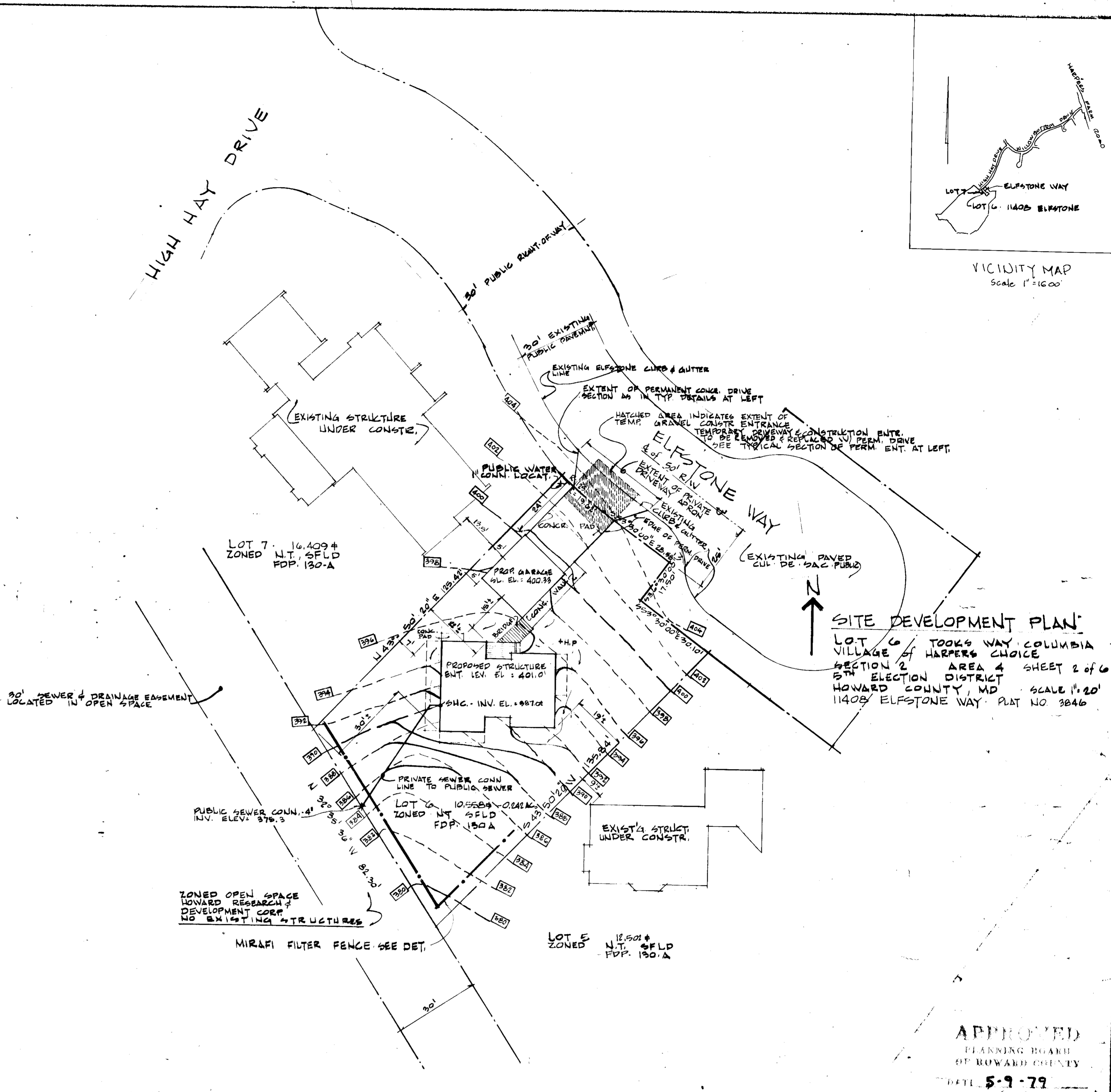
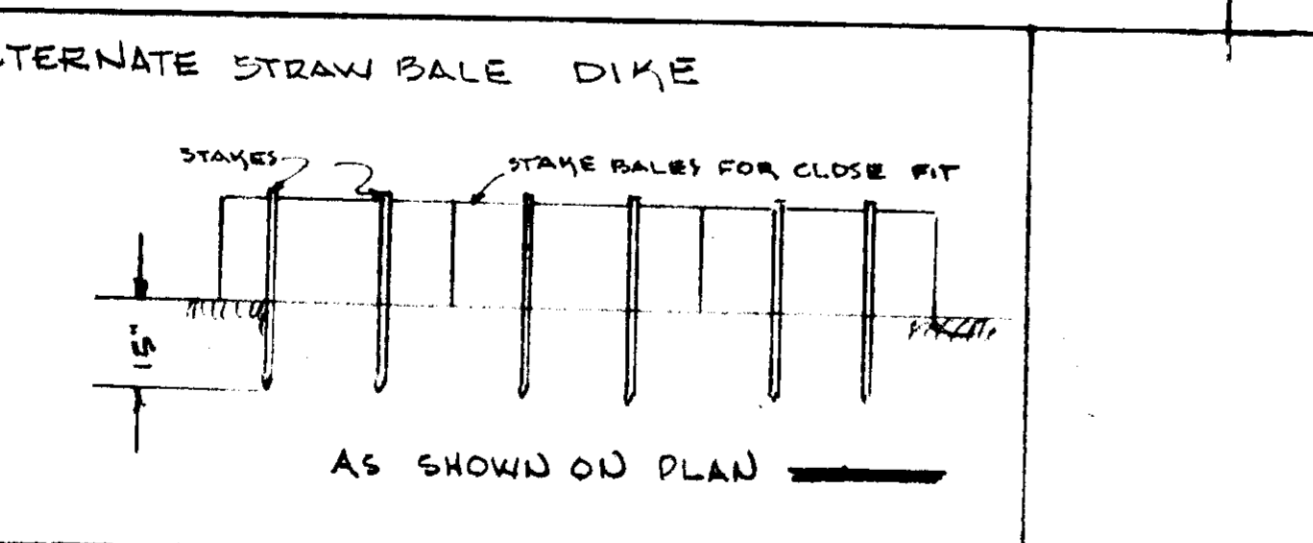
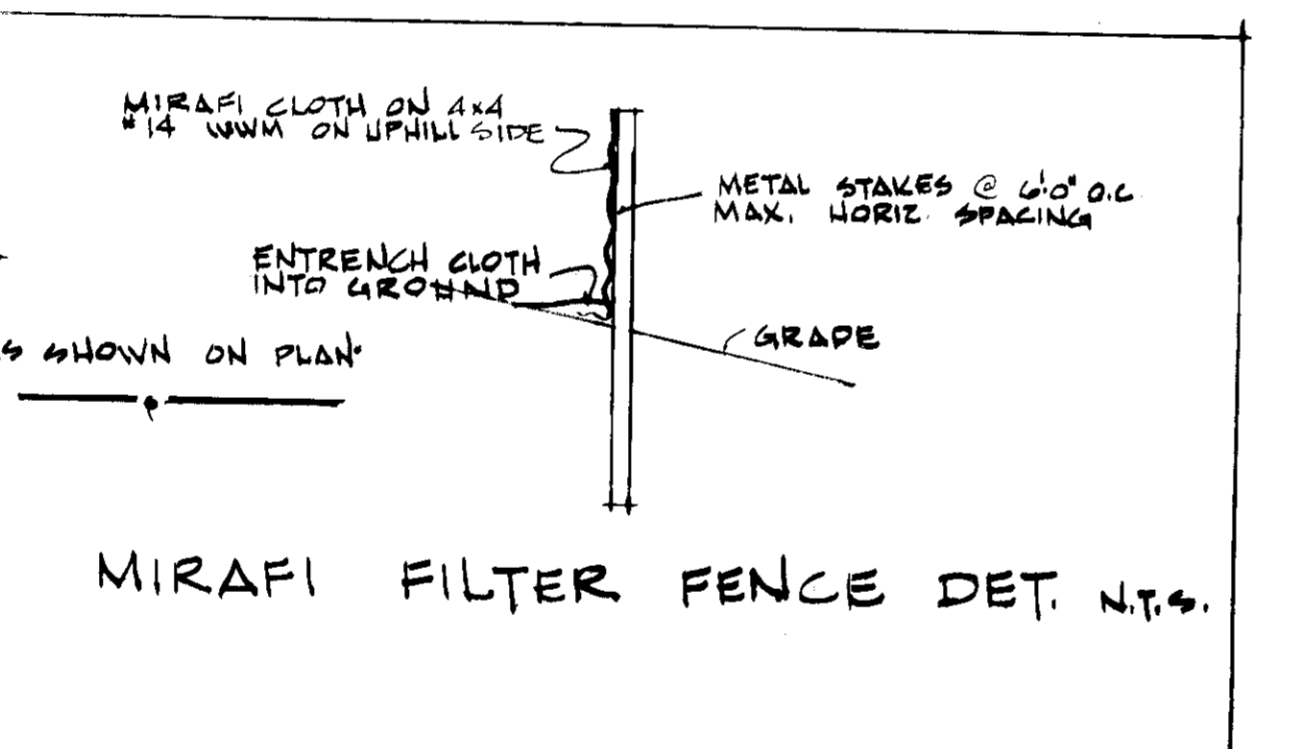
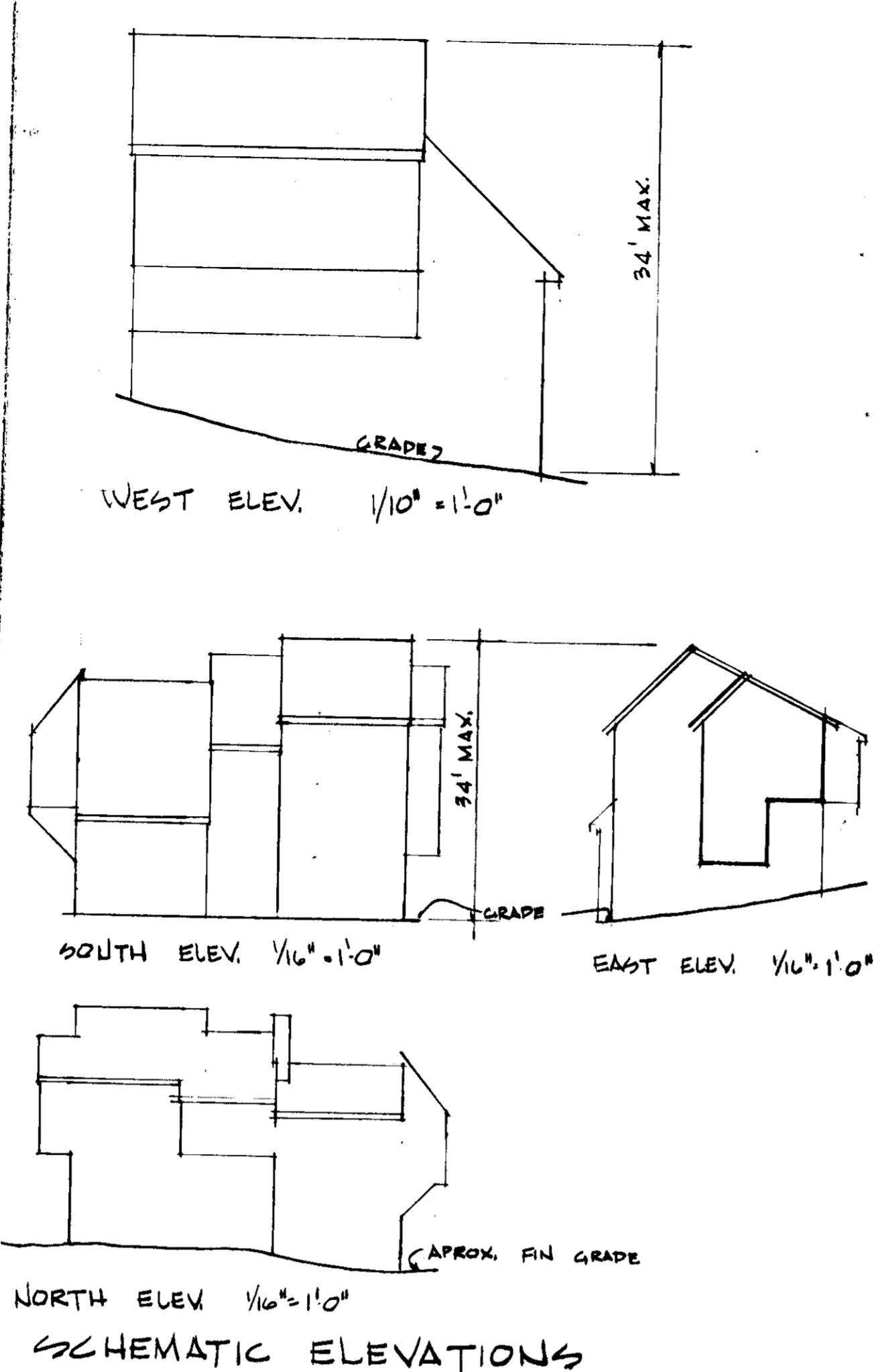
APPROVED: For public water and public sewage systems.
HOWARD COUNTY HEALTH DEPARTMENT
Signature: *John J. Adams* DATE: 6-5-79
COUNTY HEALTH OFFICER

APPROVED: HOWARD COUNTY OFFICE OF PLANNING AND ZONING
Signature: *[Signature]* DATE: 6-1-79
PLANNING DIRECTOR
CHIEF, DIVISION OF LAND DEVELOPMENT

APPROVED: For public water, public sewerage and storm drainage systems and roads.
HOWARD COUNTY DEPARTMENTS OF PUBLIC WORKS
Signature: *[Signature]* DATE: 6-1-79
DIRECTOR CHIEF, BUREAU OF ENGINEERING

T&A CONSTRUCTION SERVICES, INC. OWNER
9050 H. RED BRANCH ROAD
COLUMBIA, MD. 21045 PH 301-992-9088

SHEET 1 of 1
SDP-79-127c



APPROVED
PLANNING BOARD
OF HOWARD COUNTY
MAY 5-9-79
[Signature]