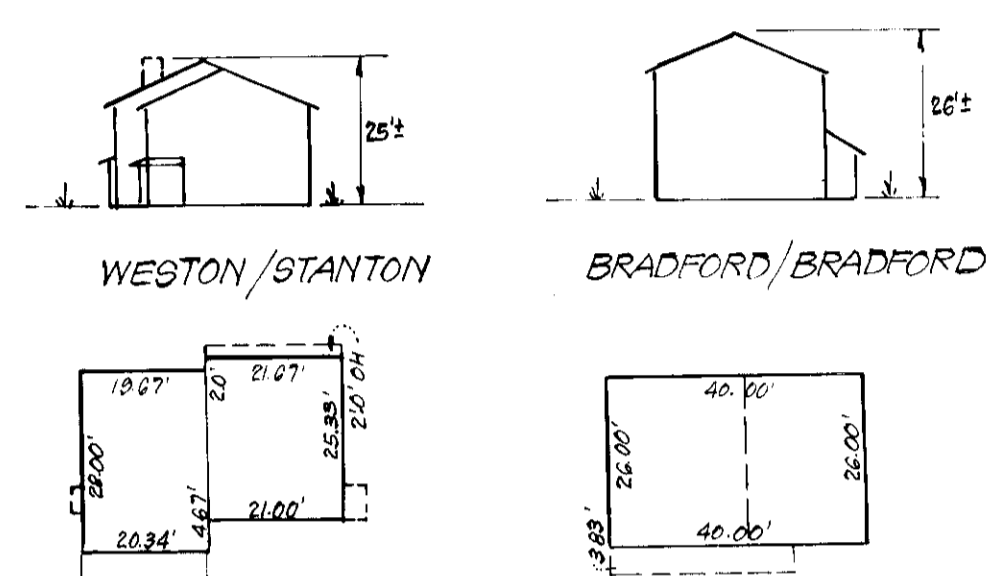


GENERAL NOTES

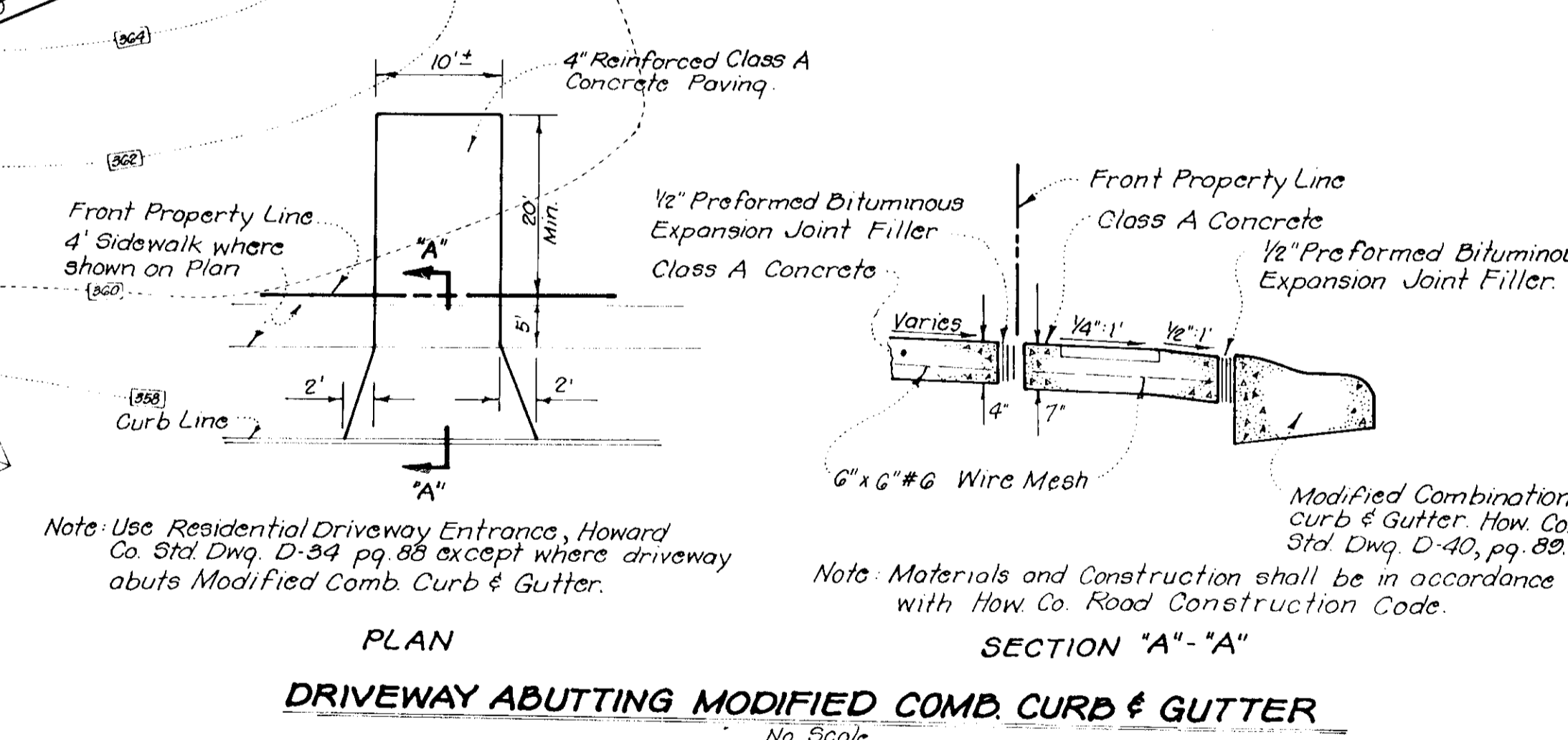
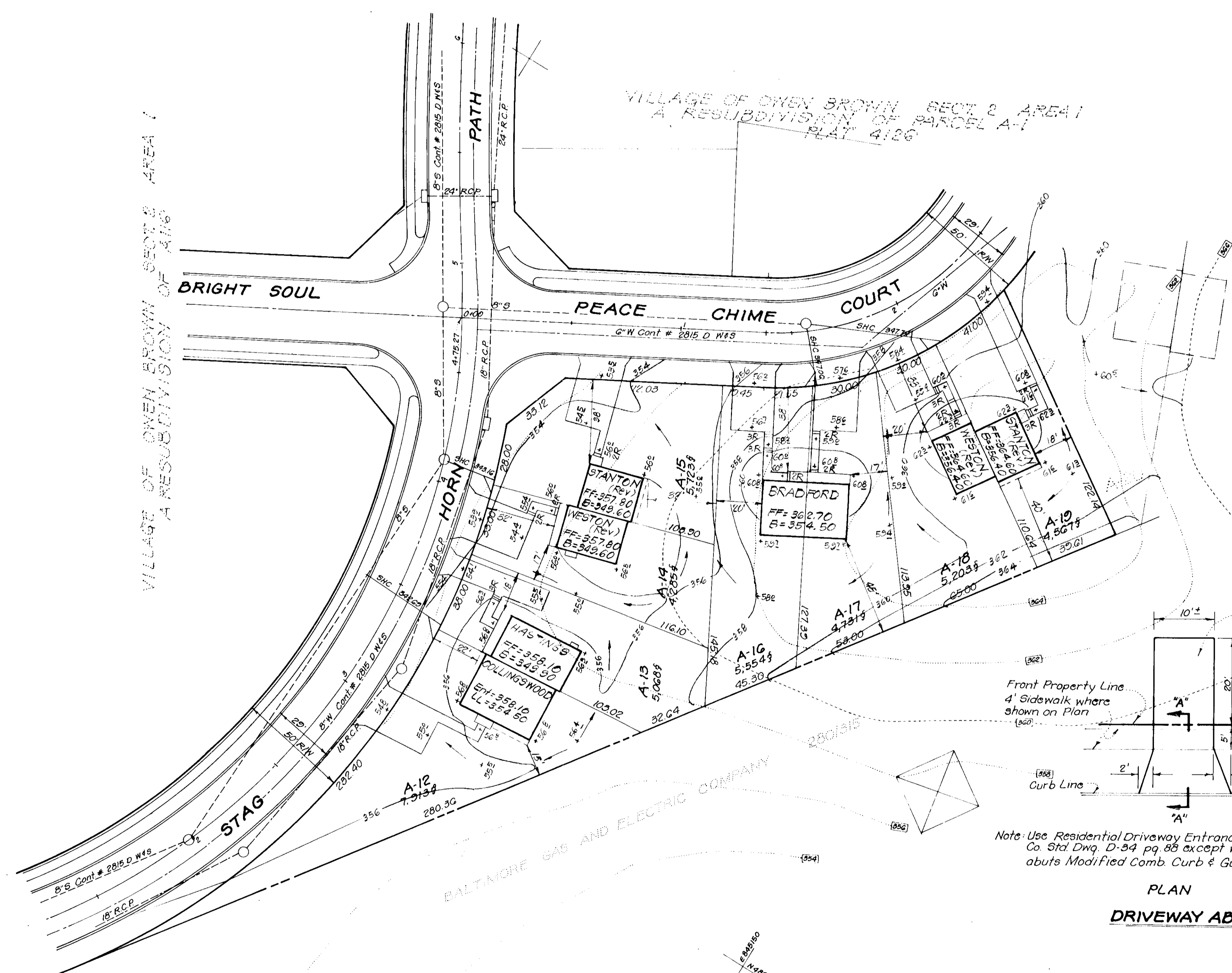
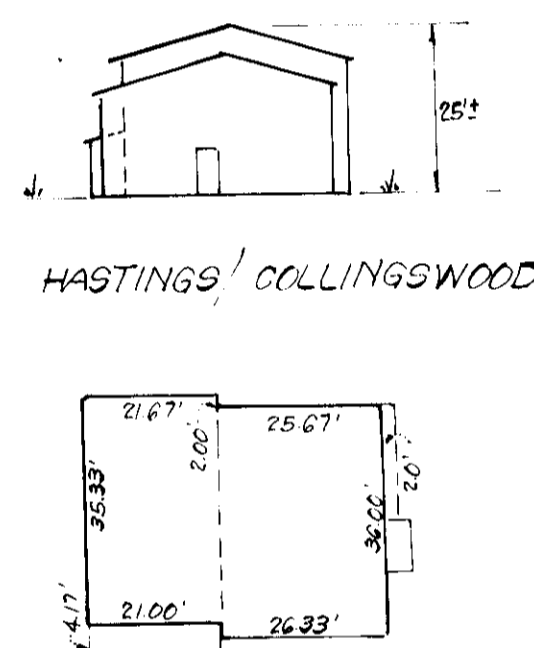
1. The Land included in this plan is zoned New Town (S.F.A.)
2. The Lots shown on this plan are covered by Final Development Plan Phase 118 Part 1-A
3. All coordinates are base on traverse controls for Columbia established by Maps, Inc., in 1965 by Purdum & Jeschke in 1968 which controls were tied to Maryland Bureau of Control Survey monuments and to U.S. Coast and Geodetic Survey monuments in the Columbia area.
4. The area covered in this submission is located on Tax Map No 42
5. The total area included in this plan is 0.988 Acres.
6. All roadways are public & existing.
7. Any damage to county owned rights-of-way or paving shall be corrected at developer's expense.

LEGEND

1. Contour Interval 2 Ft.
2. Existing Contours
3. Proposed Contours
4. Spot Elevation +60'
5. Direction of Drainage
6. Existing Trees to be Retained



TYPICAL HOUSE TYPES AND ELEVATIONS
No Scale



Note: Use Residential Driveway Entrance, Howard Co. Std. Dwg. D-34 pg. 88 except where driveway abuts Modified Comb. Curb & Gutter.

Note: Materials and Construction shall be in accordance with How Co. Road Construction Code.

PLAN
SECTION "A" - "A"
DRIVEWAY ABUTTING MODIFIED COMB. CURB & GUTTER
No Scale

Note: For Bearings & Distances of individual Lots see Plat 412G

APPROVED FOR PUBLIC WATER AND PUBLIC SEWERAGE SYSTEMS,
HOWARD COUNTY HEALTH DEPARTMENT
John W. Musakhan 4-24-79
COUNTY HEALTH OFFICER DATE

APPROVED HOWARD COUNTY OFFICE OF PLANNING & ZONING
John W. Musakhan 4-24-79
PLANNING DIRECTOR DATE

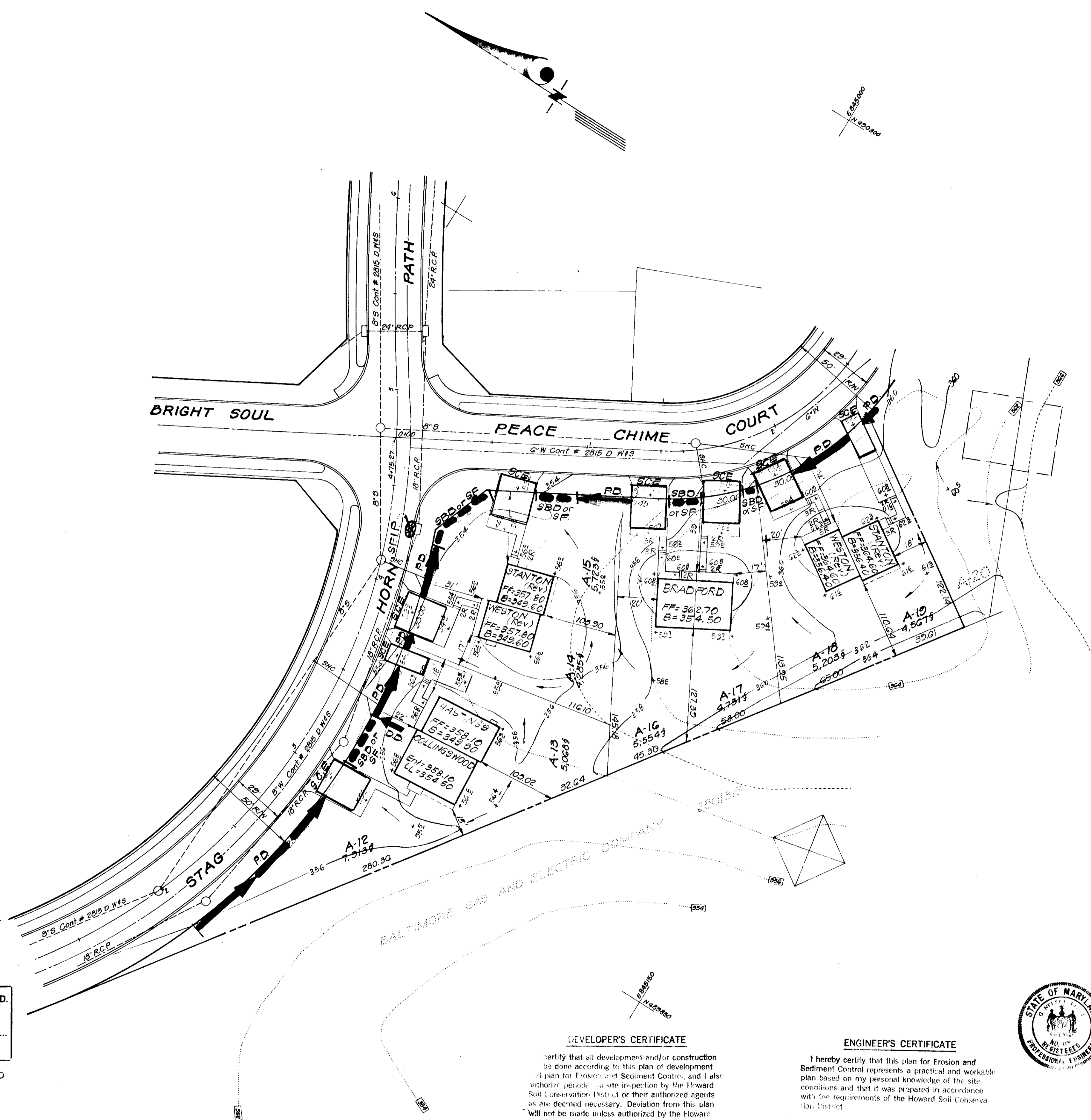
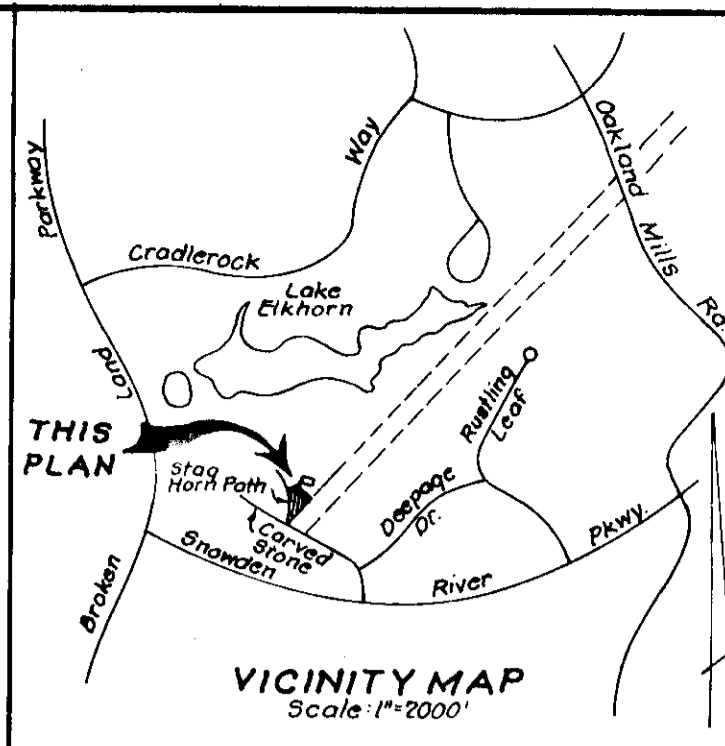
APPROVED FOR PUBLIC WATER AND PUBLIC SEWERAGE,
STORM DRAINAGE SYSTEMS AND PUBLIC ROADS
HOWARD COUNTY DEPARTMENT OF PUBLIC WORKS
John F. New 4-23-79
DIRECTOR DATE

W.D. Sackett 4-20-79
CHIEF BUREAU OF ENGINEERING DATE

APPROVED
DIVISION OF LAND DEVELOPMENT
4-10-79

Donald B. Sackett

CLARK • FINEROCK & SACKETT ENGINEERS • PLANNERS • SURVEYORS		11115 LEE WOOD DRIVE SILVER SPRING, MARYLAND 20904 (301) 593 3400
DESIGNED <i>J.M.E.</i>	SITE DEVELOPMENT PLAN LOTS A-12 THRU A-19 COLUMBIA VILLAGE OF OWEN BROWN SECTION 2 AREA 1 6TH ELECTION DISTRICT HOWARD COUNTY, MARYLAND FOR: THE RYLAND GROUP, INC. Suite 200 V.O.M. Office Bldg. Columbia, Maryland 21043	SCALE 1"=30'
DRAWN <i>J.M.E.</i>		DRAWING 10-13
CHECKED <i>J.M.E.</i>		JOB NO. 78-1177
DATE Feb. 1979		FILE NO. 78-1177-X



- LEGEND**
- 1 Contour Interval 2 ft
 - 2 Existing Contours
 - 3 Proposed Contours
 - 4 Spot Elevation +60.7
 - 5 Direction of Drainage
 - 6 Existing Trees to be Retained
 - 7 Perimeter Dike P.D.
 - 8 Straw Bale Dike or Silt Fence S.B.D. or S.F.
 - 9 Stone Filter Inlet Protection S.F.I.P.
 - 10 Stone Construction Entrance S.C.E.
 - 11 Diversion Dike D.D.

APPROVED
DIVISION OF LAND DEVELOPMENT
HOWARD COUNTY, MARYLAND
DATE 4-10-79

Note: For Bearings & Distances of individual Lots see Plot 412G

APPROVED FOR PUBLIC WATER AND PUBLIC SEWERAGE SYSTEMS,
HOWARD COUNTY HEALTH DEPARTMENT
John P. Ryan 4-24-79
COUNTY HEALTH OFFICER DATE

APPROVED HOWARD COUNTY OFFICE OF PLANNING & ZONING

PLANNING DIRECTOR DATE

CHIEF DIVISION OF LAND DEVELOPMENT DATE

APPROVED FOR PUBLIC WATER AND PUBLIC SEWERAGE,
STORM DRAINAGE SYSTEMS AND PUBLIC ROADS
HOWARD COUNTY DEPARTMENT OF PUBLIC WORKS
Henry F. Nemy 4-23-79
DIRECTOR DATE

CHIEF BUREAU OF ENGINEERING DATE

Reviewed for.....*Howard*.....S.C.D.
Name
and meets Technical Requirements
C. Wayne Gray 4-11-79
Signature Date
U.S. Soil Conservation Service

THIS DEVELOPMENT PLAN IS APPROVED
FOR SOIL EROSION AND SEDIMENT
CONTROL BY THE HOWARD SOIL
CONSERVATION DISTRICT.

Robert J. Zehm 4-11-79
Approved Date

DEVELOPER'S CERTIFICATE
I hereby certify that all development and/or construction
is done according to this plan of development
and plan for Erosion and Sediment Control, and I also
authorize periodic site inspection by the Howard
Soil Conservation District or their authorized agents
as are deemed necessary. Deviation from this plan
will not be made unless authorized by the Howard
Soil Conservation District.

Lowrie B. Sargent 2-29-79
Signature Date

ENGINEER'S CERTIFICATE
I hereby certify that this plan for Erosion and
Sediment Control represents a practical and workable
plan based on my personal knowledge of the site
conditions and that it was prepared in accordance
with the requirements of the Howard Soil Conserva-
tion District.

G. Nelson Clark 2-23-79
Signature Date



CLARK • FINEROCK & SACKETT
ENGINEERS • PLANNERS • SURVEYORS
11315 GILKWOOD DRIVE SILVER SPRING, MARYLAND 20904 (301) 593 3400

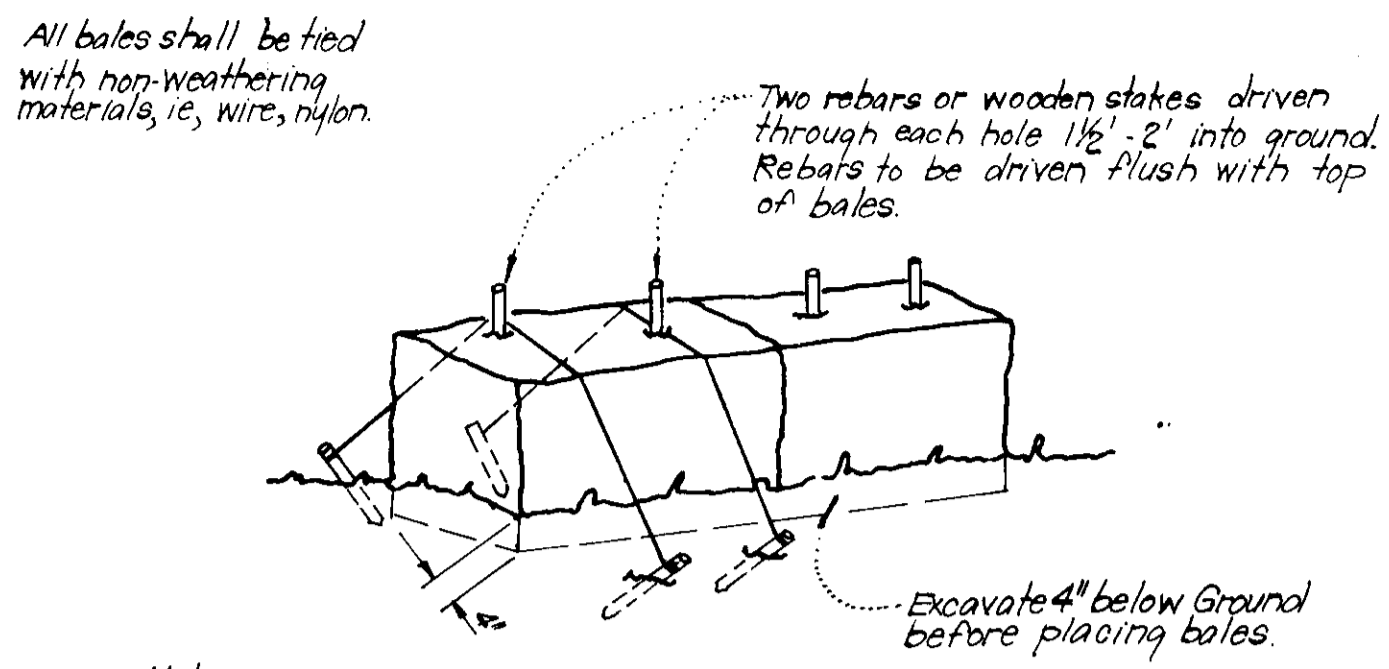
DESIGNED JLS	SEDIMENT & EROSION CONTROL PLAN LOTS A-12 THRU A-19 COLUMBIA VILLAGE OF OWEN BROWN SECTION 2 6TH ELECTION DISTRICT HOWARD COUNTY, MARYLAND FOR: THE RYLAND GROUP, INC. Suite 200 V.O.M. Office Bldg. Columbia, Maryland 21043	SCALE 1"=30'
DRAWN JME K.L.W.		DRAWING 22/13
CHECKED JLS		JOB NO. 78-1177
DATE Feb, 1979		FILE NO. 78-1177SE

SDP-79-110c

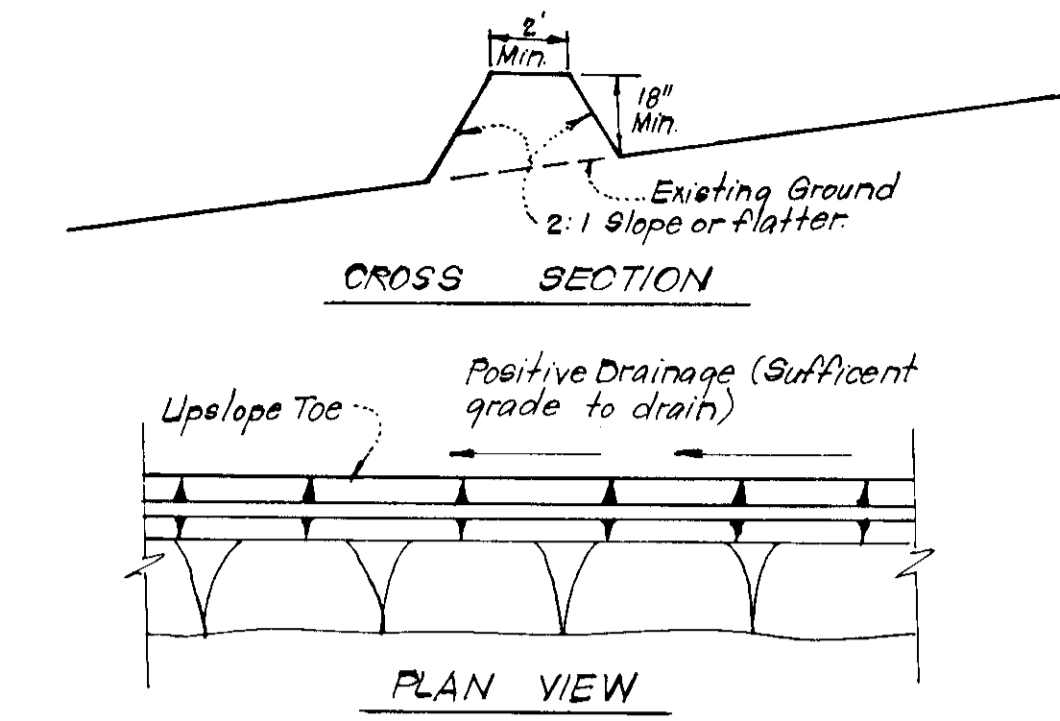
GENERAL NOTES

- Grading Permits shall be obtained prior to installation of Sediment Control & Grading.
- All Sediment and Erosion Control Measures will be installed and stabilized according to this plan prior to any other grading, clearing or disturbance of the existing surface of the site. See note #6 for stabilization except that the seed mixture will be annual rye applied at a rate of 1.4 lbs/1000 sq ft.
- Notify the Bureau of Inspections and Permits at least 24 hrs before starting any work.
- All Sediment Control Practices to conform to the "Standards and Specifications for Soil Erosion and Sediment Control in Developing Areas" and shall be adjusted to meet actual field conditions.
- Stabilization of Disturbed ground to be done as soon after construction as possible.
- All grading shall be treated in accordance with the following Specifications:
 - Seed - certified 85% germination applied at the rate of 3 lbs/1000 sq ft. Mixture - 40% Kentucky Blue, 20% Chewing Fescue, 20% Kentucky 31 and 20% annual rye.
 - Fertilizer - 10-10-10 applied at a rate of 23 lbs/1000 sq ft. Ground Agricultural Lime or Dolomitic Lime applied at a rate of 46 lbs/1000 sq ft.
 - Mulch - Weed free grain straw applied at a rate of 46 lbs/1000 sq ft. Mulch shall be secured to the ground by any approved method i.e. asphalt tacks, chemical binder, etc.
 - All Seed used shall be Maryland State Certified.
- All Structural Sediment Control Measures are to remain in place until permission for their removal has been obtained from the Bureau of Inspections and Permits.
- On-Site Inspection and Maintenance of all Sediment Control Measures including clean out of Sediment Traps and dikes, and proper establishment of all planned vegetative measures will be the responsibility of the developer or his representative on the site, on a continuing day to day basis.
- It will be the developer's responsibility to provide additional Sediment & Erosion Control Devices to protect stabilized areas during construction.
- The Contractor shall keep all public roads free of sediment deposits left from traffic leaving construction site.
- Stabilized Construction Entrances shall be placed at all construction entrances.
- If houses are to be constructed on an "As-Sold" basis at random, Single Lot Sediment Control, as shown on this sheet, shall be implemented.
- Total Amount of Straw Bales or Silt Fence shown = 110 LF
- SITE ANALYSIS:

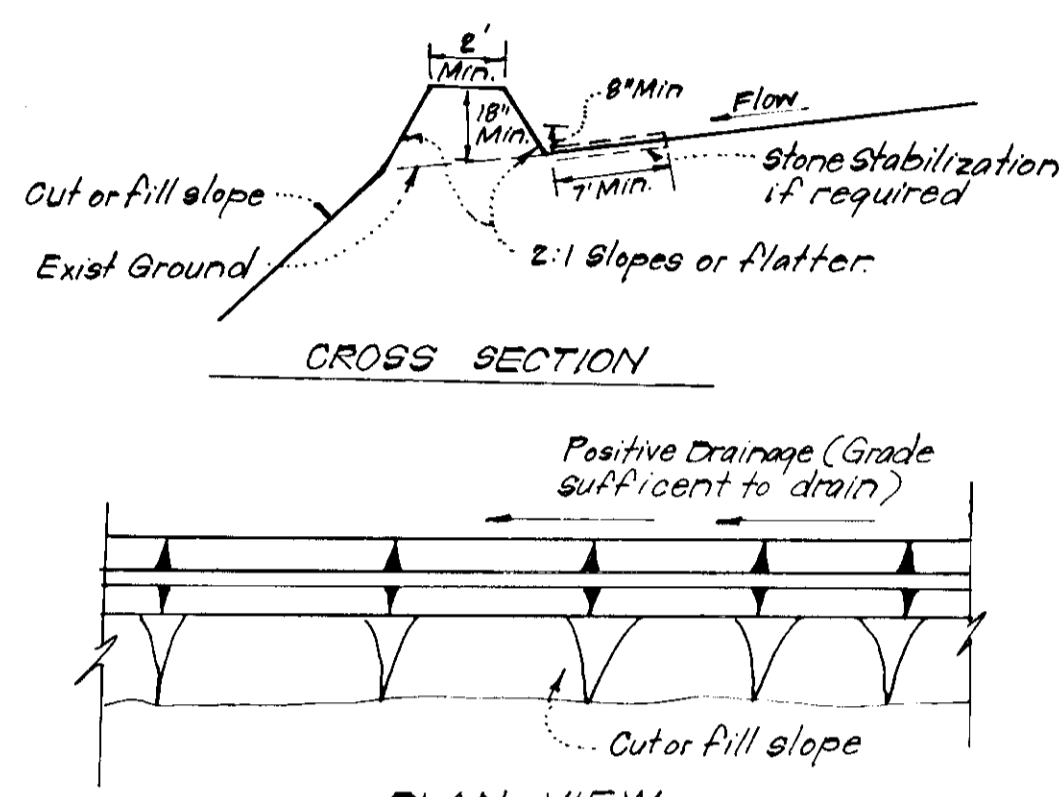
A. Total Area:	0.988	Acres
B. Area to be Roofed:	0.117	Acres
C. Area to be Paved:	0.007	Acres
D. Area to be Seeded:	0.774	Acres
E. Area Undisturbed:	0	Acres
- CONSTRUCTION SEQUENCE:
 - Install Sediment & Erosion Control Devices and Stabilize Diversion Dikes.
 - Excavate for Foundations and Rough Grade.
 - Erect Structures, Driveways and Sidewalks.
 - Final Grade and Stabilize in accordance with note #6.
- Approval of this plan is conditional upon the approval of Sediment Control Plan for the opposite Waste or borrow area prior to the import of any borrow or export of waste to or from this site.



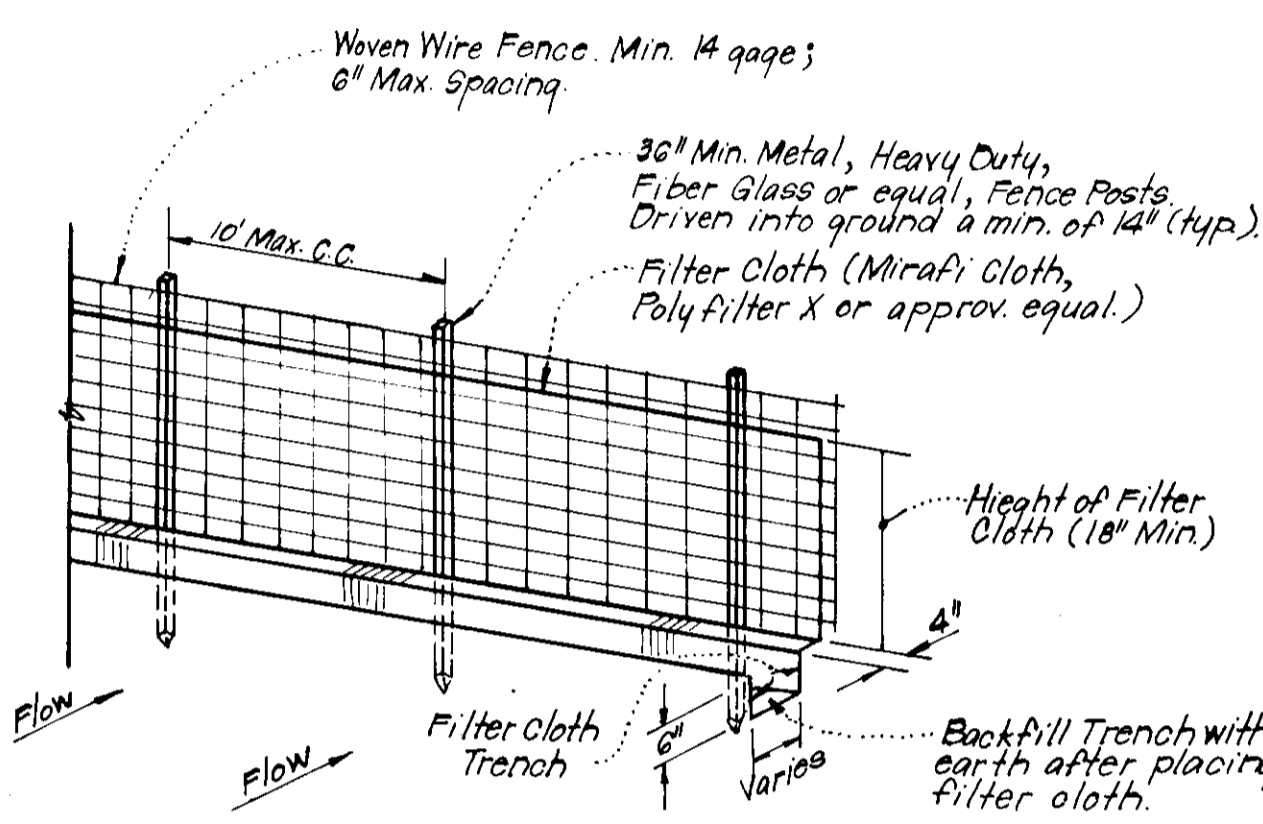
TYPICAL STRAW BALE DIKE DETAIL (S.B.D.)
No Scale



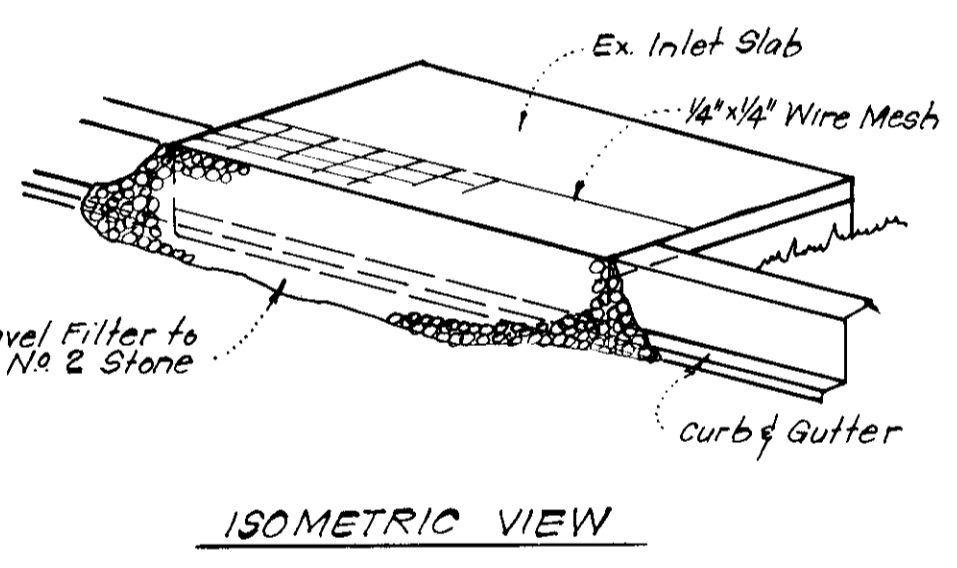
TYPICAL PERIMETER DIKE DETAIL (P.D.)
No Scale



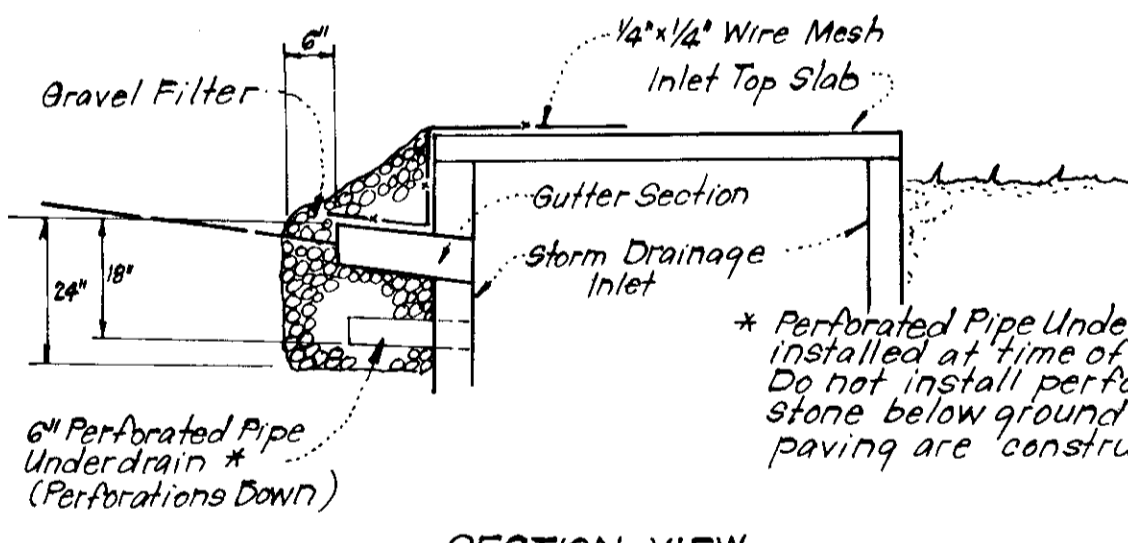
TYPICAL DIVERSION DIKE DETAIL (D.D.)
No Scale



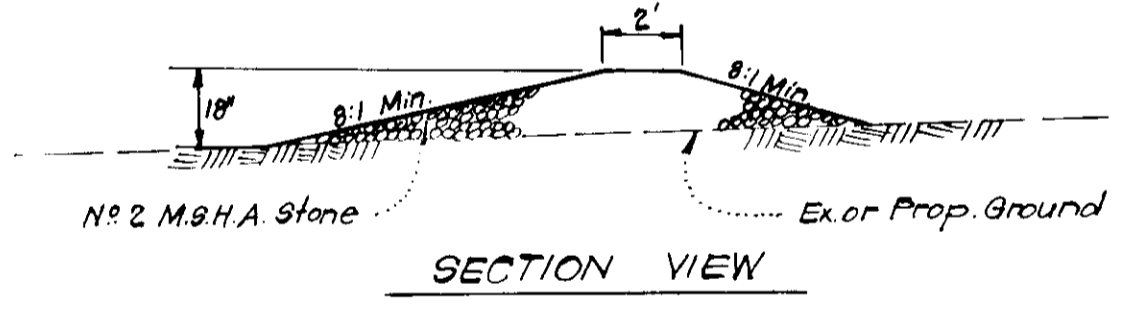
TYPICAL SILT FENCE DETAIL (S.F.)
No Scale



STONE CONSTRUCTION ENTRANCE DETAIL (S.C.E.)
No Scale



STONE FILTER INLET PROTECTION (S.F.I.P.)
No Scale



APPROVED FOR PUBLIC WATER AND PUBLIC SEWERAGE SYSTEMS, HOWARD COUNTY HEALTH DEPARTMENT
 4-24-79
 APPROVED: HOWARD COUNTY OFFICE OF PLANNING & ZONING
 PLANNING DIRECTOR DATE
 CHIEF DIVISION OF LAND DEVELOPMENT DATE
 APPROVED FOR PUBLIC WATER AND PUBLIC SEWERAGE, STORM DRAINAGE SYSTEMS AND PUBLIC ROADS, HOWARD COUNTY DEPARTMENT OF PUBLIC WORKS
 4-23-79
 DIRECTOR DATE
 CHIEF BUREAU OF ENGINEERING DATE

Reviewed for: Howard S.C.D.
 and meets Technical Requirements
 Signature: Wayne Ray 4/11/79
 U.S. Soil Conservation Service

THIS DEVELOPMENT PLAN IS APPROVED FOR SOIL EROSION AND SEDIMENT CONTROL BY THE HOWARD SOIL CONSERVATION DISTRICT.

Robert W. Ziehm 4-11-79
 Approved Date

DEVELOPER'S CERTIFICATE

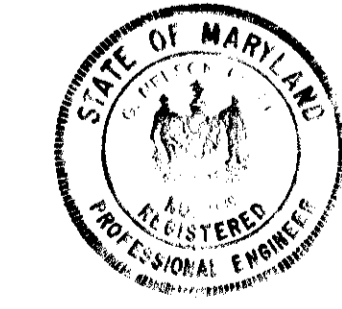
I certify that all development and/or construction will be done according to this plan of development and plan for Erosion and Sediment Control, and I also authorize periodic on-site inspection by the Howard Soil Conservation District or their authorized agents as are deemed necessary. Deviation from this plan will not be made unless authorized by the Howard Soil Conservation District.

J.B. Sargent 2-29-79
 Signature Date
 Lowrie B. Sargent

ENGINEER'S CERTIFICATE

I hereby certify that this plan for Erosion and Sediment Control represents a practical and workable plan based on my personal knowledge of the site conditions and that it was prepared in accordance with the requirements of the Howard Soil Conservation District.

G. Nelson Clark 2-28-79
 Signature Date



APPROVED
 DIVISION OF LAND DEVELOPMENT
 HOWARD COUNTY, MARYLAND
 DATE 4-10-79

CLARK • FINEFROCK & SACKETT ENGINEERS • PLANNERS • SURVEYORS 11315 LOCKWOOD DRIVE SILVER SPRING, MARYLAND 20904 (301) 593-3400	
DESIGNED	JLS
DRAWN	JLS
CHECKED	K.L.W.
DATE	Feb, 1979
SCALE	As Shown
DRAWING	3 of 3
JOB NO.	
FILE NO.	78-11775E

SEDIMENT & EROSION CONTROL PLAN
 LOTS A-12 THRU A-19
COLUMBIA
 VILLAGE OF OWEN BROWN
 SECTION 2 AREA 1
 3rd ELECTION DISTRICT
 HOWARD COUNTY, MARYLAND
 FOR: THE RYLAND GROUP, INC.
 Suite 200 W.M. Office Bldg.
 Columbia, Maryland 21043
 SDF-79-110c