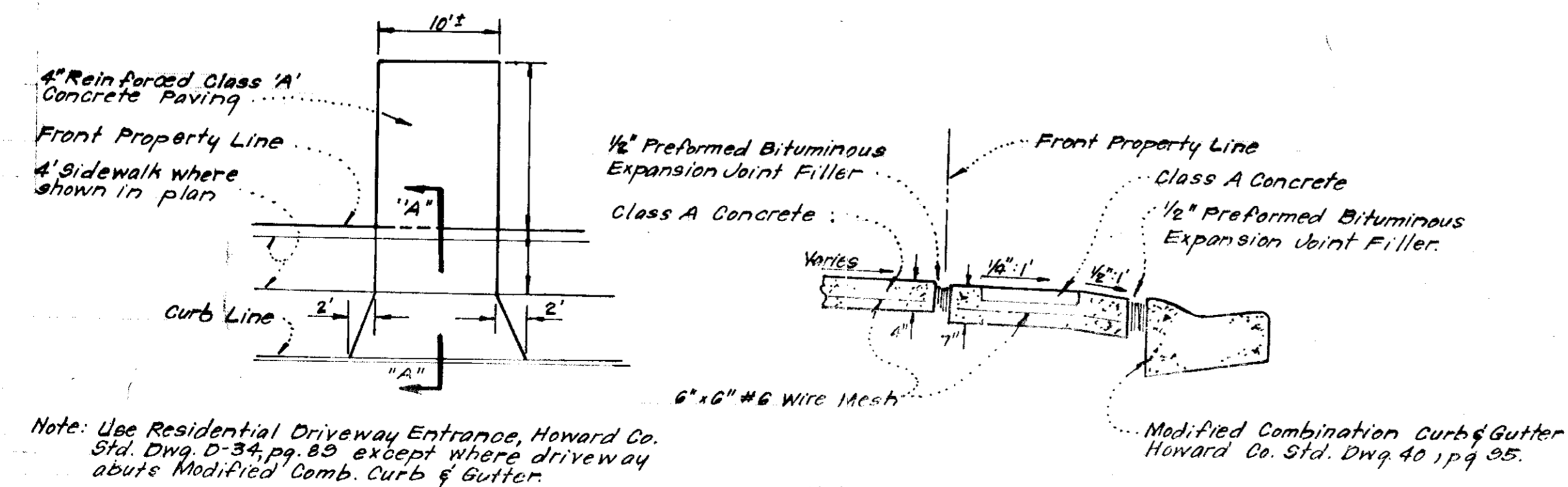
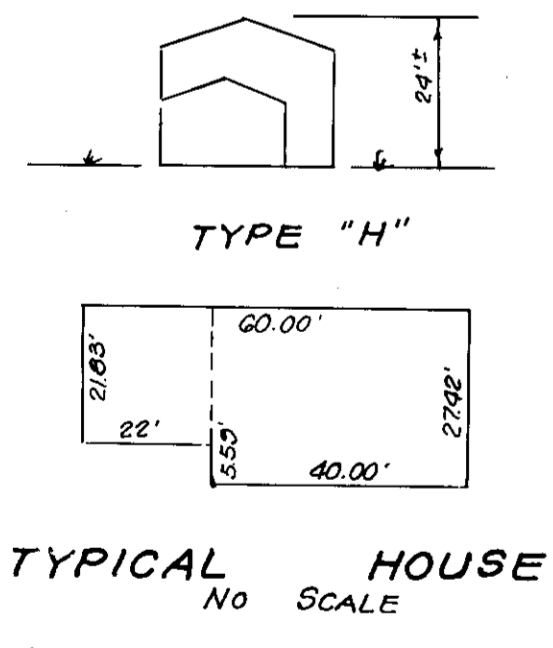


- GENERAL NOTES**
1. The Land in this plan is zoned: R-12
 2. All coordinates are based on Maryland State Grid System. Elevations are based on U.S. Coast & Geodetic System Mean Sea Level Datum of 1929.
 3. Total area included in this plan is 0.551 Acres.
 4. The Area covered in this submission is located on Tax Map No. 30.
 5. All Roadways are public & existing.
 6. Any damage to county owned rights of way or paving shall be corrected at the developers expense.



SURVEYOR'S CERTIFICATE

I hereby certify that the information contained herein is the same as shown on previously approved SDP 79-02, with the following exceptions:

1. House Type and Grading has been revised on Lots 74 and 76 Block G.

I further certify that the Sediment & Erosion control measures, as previously approved, will not be affected, the grading is substantially the same as originally approved, the building setbacks comply with Howard County Zoning and Subdivision Regulations, and the lot has the same geometric configuration as shown on the respective recorded subdivision Plat.

2-6-78
Date

Donald B. Sackett
DONALD B. SACKETT
Registered Land Surveyor
Md. No. 6052

Note: For Bearings and Distances of Individual Lot Lines See record plat recorded as plat 3072

APPROVED FOR PUBLIC WATER AND PUBLIC SEWERAGE SYSTEMS,
HOWARD COUNTY HEALTH DEPARTMENT
3-28-79
DATE

APPROVED FOR PLANNING AND ZONING
HOWARD COUNTY DEPARTMENT OF PLANNING & ZONING
3-28-79
DATE

APPROVED FOR PUBLIC WATER AND PUBLIC SEWERAGE,
STORM DRAINAGE SYSTEMS AND PUBLIC ROADS
HOWARD COUNTY DEPARTMENT OF PUBLIC WORKS
3-28-79
DATE

CLARK • FINEFROCK & SACKETT ENGINEERS • PLANNERS • SURVEYORS 11315 LUCKWOLD DRIVE SILVER SPRING, MARYLAND 20904 (301) 588-8800		
DESIGNER J.M.E. DRAWN K.I.W. CHECKED D.B.S. DATE Feb., 1979	REVISED SITE DEVELOPMENT PLAN LOTS 74 AND 76, BLOCK G GLENMONT SECTION 1 AREA 2 6TH PLAT LOTS 10, DISTRICT HOWARD COUNTY, MARYLAND FOR: JACOB DEVELOPMENT GROUP, INC. 18900 Clarksville Pike Clarksville, Maryland 21030 SDP-79-96	SCALE 1/8" = 1'-0" DRAWING 1 of 1 JOB NO. FILE NO. 1321 X Price per. 100' x 100' = \$10.00