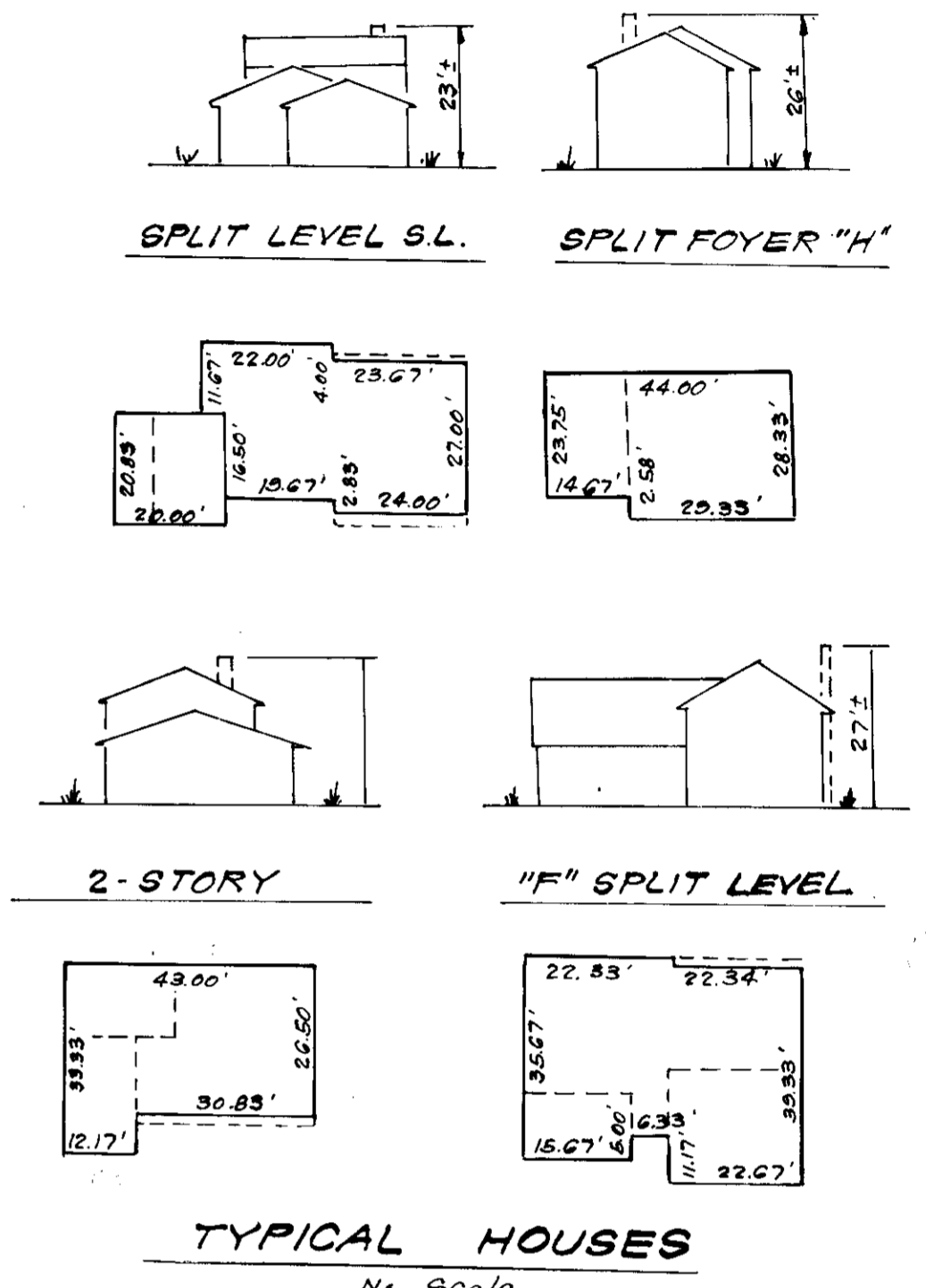
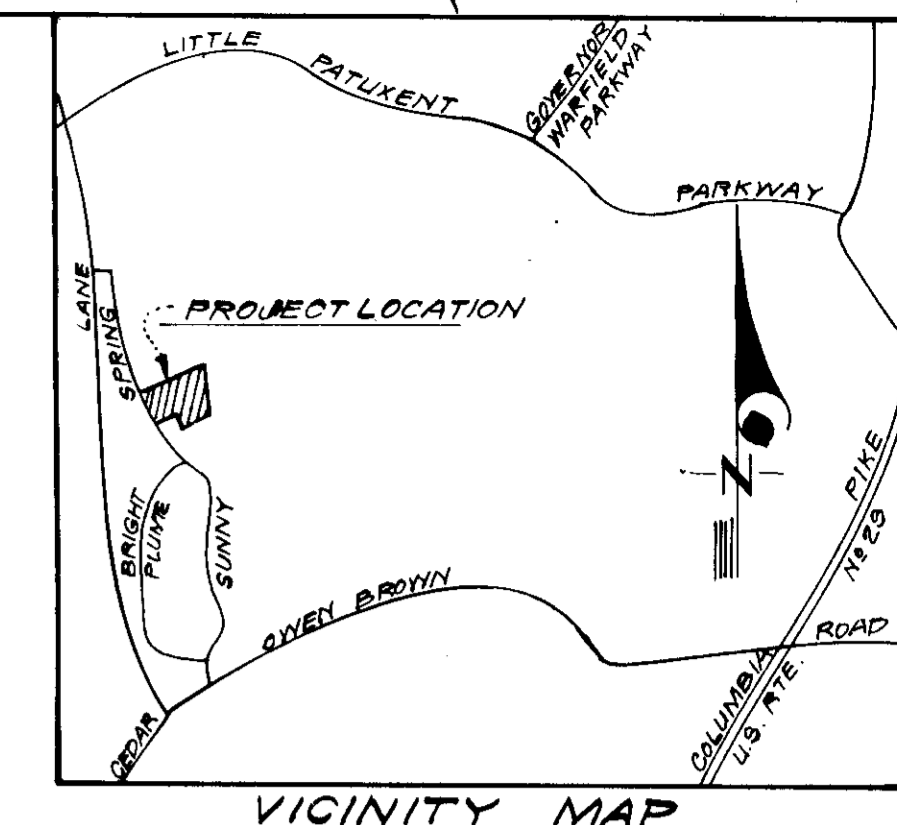


MATCH SHEET 2 of 2

LEGEND

- 1. Contour Interval 2 FT.
- 2. Existing Contour (---)
- 3. Proposed Contour (---)
- 4. Spot Elevation (+30.0)
- 5. Direction of Drainage (---)
- 6. Retaining Wall (---)
- 7. Existing Trees to be Retained (○)



GENERAL NOTES

1. The Land Included in this plan is zoned New Town (S.F.M.D.)
2. The Lots shown on this plan are covered by Final Development Plan Phase 106 recorded in P.B.3054, Folio's A39, A34 & A35.
3. All Coordinates are based on Maryland State Grid System. Elevations are based on U.S. Coast & Geodetic Survey Mean Sea Level datum of 1929.
4. The Area covered in this subdivision is located on Tax Map #35.
5. The Total Area included in this plan is 1.706 Acres.
6. All Road ways are public existing.
7. Any damage to county owned right of ways or paving shall be corrected at the developer's expense.

SURVEYOR'S CERTIFICATION

I hereby certify that the information contained hereon is the same as shown on previously approved SDP 78-91-C with the following exceptions:

1. House Types and grading has been revised on Lots 8, 15, 16, 21, 24 & 41
2. The total area included in this plan is 1.706 Acres

I further certify that the Sediment & Erosion control measures, as previously approved, will not be affected, the grading is substantially the same as originally approved, the building setbacks comply with F.O.P. Phase 39-A recorded in Plat 3954, and the lots have the same geometric configuration as shown on the respective recorded subdivision plat.

10/3/78 DATE

*Donald B. Sackett*  
 DONALD B. SACKETT  
 Registered Land Surveyor  
 Md. No. 6050

Note: For Bearings and Distances of Individual Lot Lines, see Record Plat recorded as Plat 3954.

**CLARK • FINEFROCK & SACKETT**  
 ENGINEERS • PLANNERS • SURVEYORS  
 11315 LOCKWOOD DRIVE SILVER SPRING, MARYLAND 20904 (301) 593-3400

DESIGNED: DBS  
 DRAWN: K.I.W.  
 CHECKED: D.B.S.  
 DATE: Oct, 1978

REVISOR'S SITE DEVELOPMENT PLAN  
 LOTS 8, 15, 16, 21, 24 & 41

**COLUMBIA**  
 VILLAGE OF HICKORY RIDGE  
 SECTION 1 AREA 5  
 5TH ELECTION DISTRICT  
 HOWARD COUNTY, MARYLAND

FOR: Columbia Builders Inc.  
 606 American City Bldg.  
 Columbia, Maryland 21044  
 SDP-79-66c

SCALE: 1"=30'  
 DRAWING: 1042  
 JOB NO.:  
 FILE NO.: 1327-X

(30 Lots) See Also: 1630-5E

APPROVED  
 DIVISION OF LAND DEVELOPMENT  
 HOWARD COUNTY, MARYLAND  
 DATE: 11-27-78  
*Jawa*

NOTE: An approved copy of SDP 78-91-C, showing approved Sediment & Erosion Control will be kept on-site during construction.

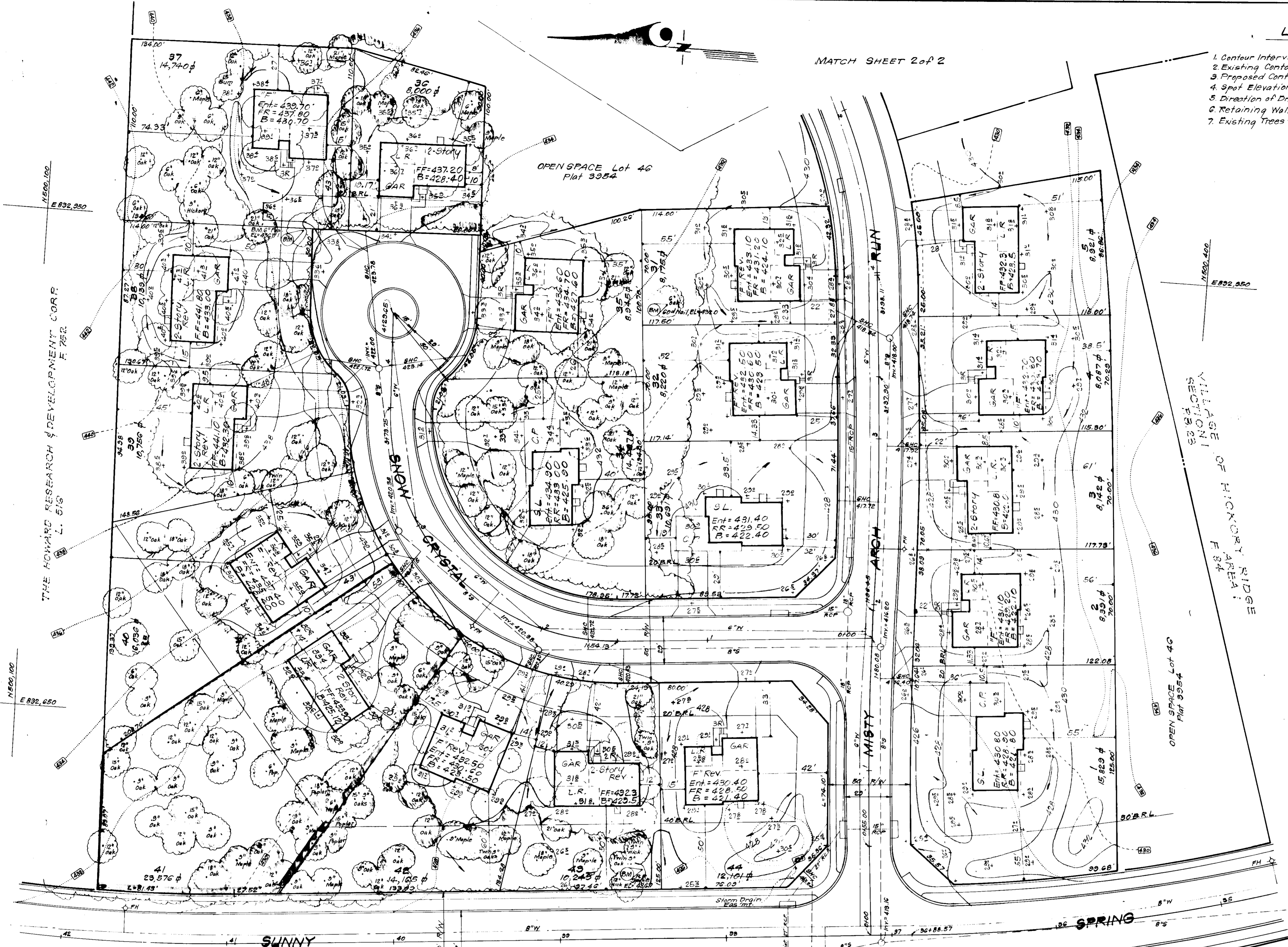
APPROVED FOR PUBLIC WATER AND PUBLIC SEWERAGE SYSTEMS, HOWARD COUNTY HEALTH DEPARTMENT  
*John G. ...* 12-14-78  
 HEALTH OFFICER DATE

APPROVED FOR HOWARD COUNTY OFFICE OF PLANNING & ZONING  
*James D. ...* 12-18-78  
 PLANNING DIRECTOR DATE

APPROVED FOR PUBLIC WATER AND PUBLIC SEWERAGE, STORM DRAINAGE SYSTEMS AND PUBLIC ROADS, HOWARD COUNTY DEPARTMENT OF PUBLIC WORKS  
*Richard E. ...* 12/11/78  
 DIRECTOR DATE

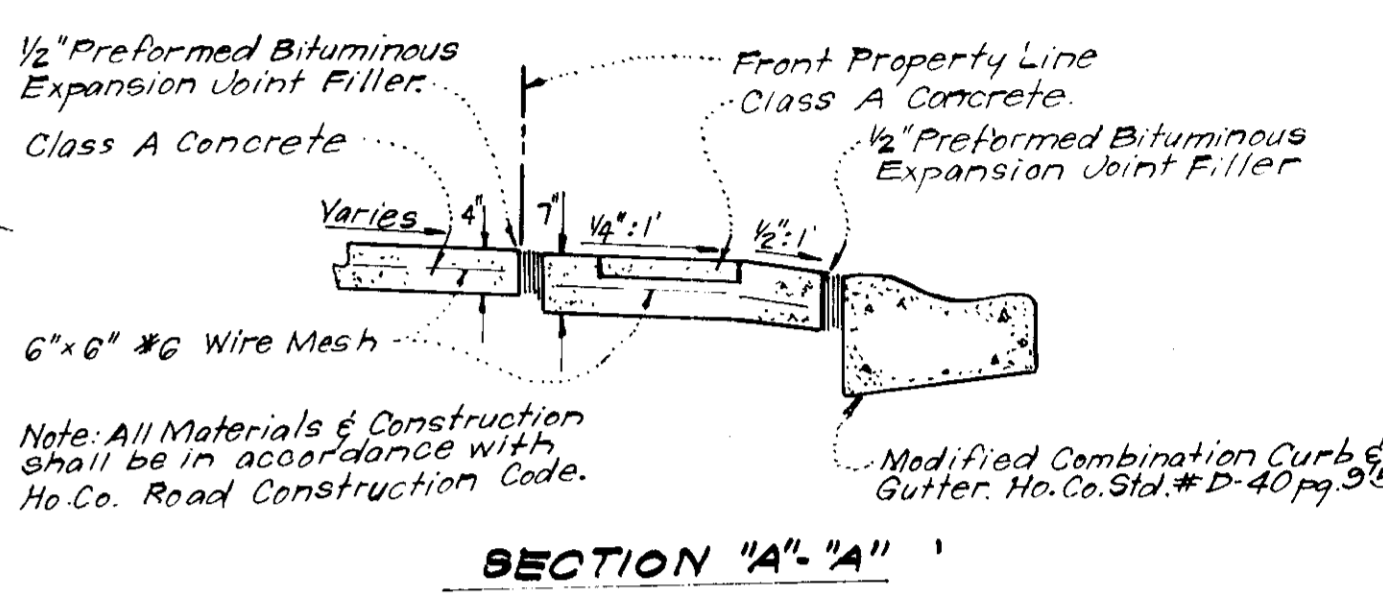
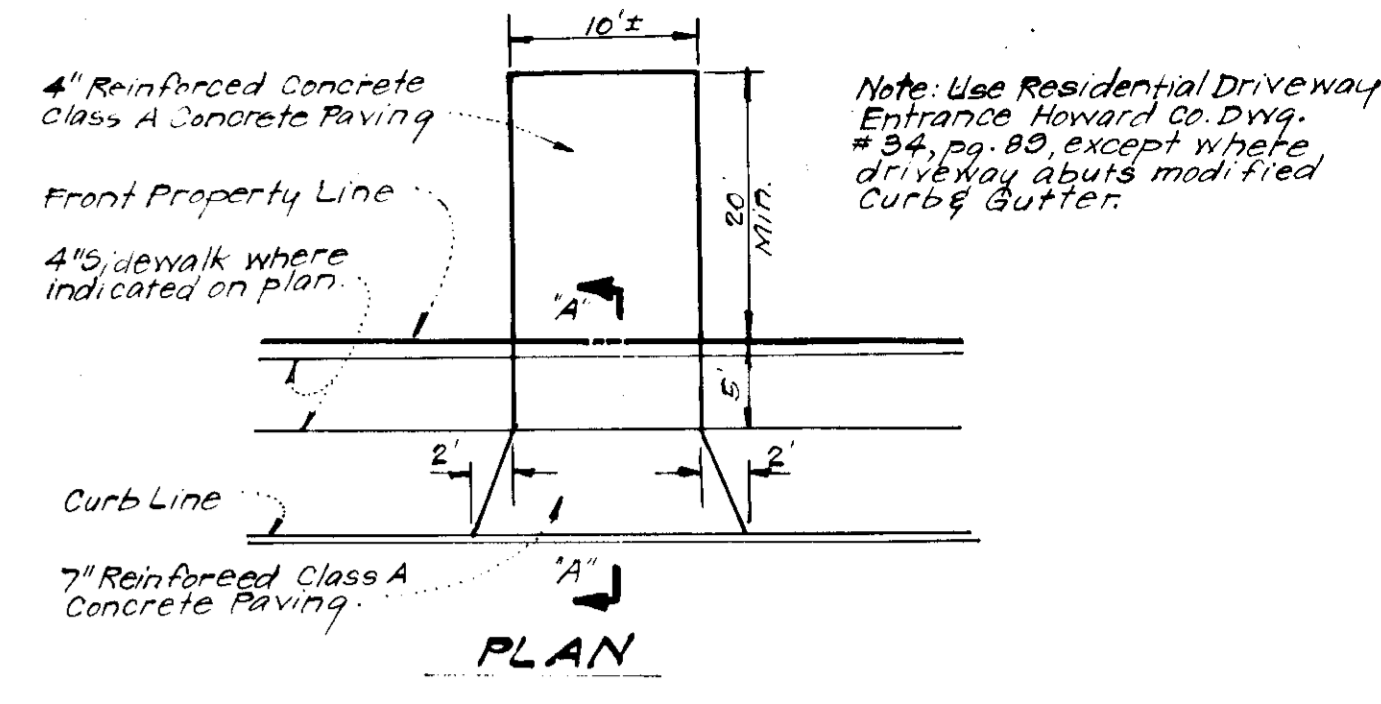
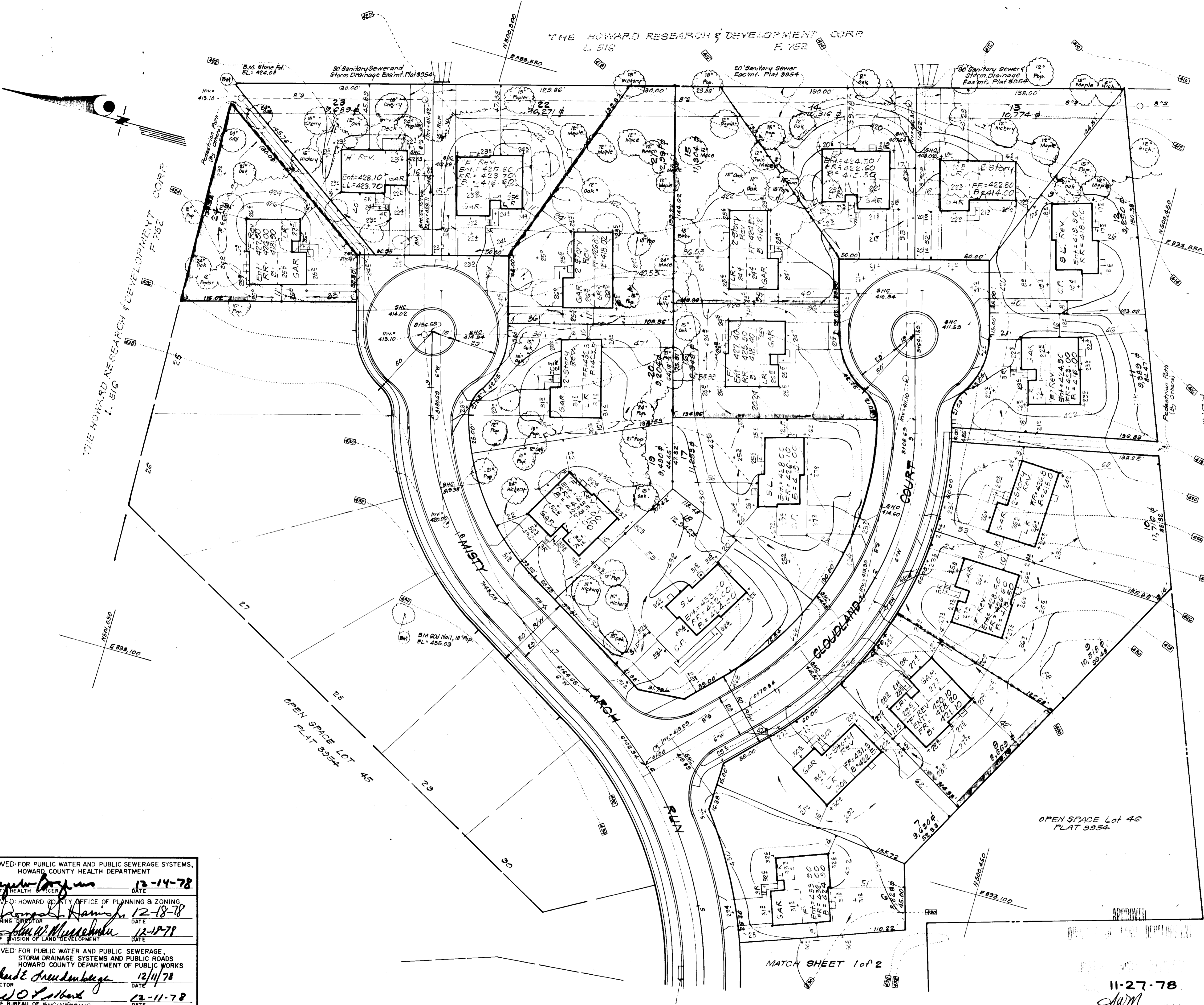
APPROVED FOR PUBLIC WATER AND PUBLIC SEWERAGE, STORM DRAINAGE SYSTEMS AND PUBLIC ROADS, HOWARD COUNTY DEPARTMENT OF PUBLIC WORKS  
*W. O. ...* 12-11-78  
 CHIEF BUREAU OF ENGINEERING DATE

No.	REVISION	Date
1	Changed House Type & Grading on Lot 40	5-2-78
2	House Types & Grading on Lots 8, 15, 16, 21, 24 & 41 Revised	10-30-78





THE HOWARD RESEARCH & DEVELOPMENT CORP.  
L. 516 F. 752

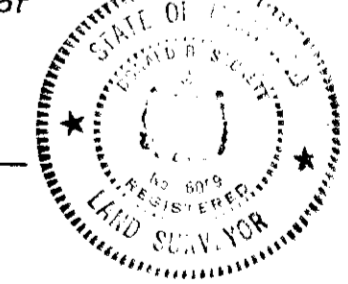


**DRIVEWAY ABUTTING MODIFIED CURB & GUTTER**  
No Scale

**SURVEYOR'S CERTIFICATION**

I hereby certify that the information contained herein is the same as shown on previously approved SDP 78-91-C with the following exceptions:  
 1. House Types and grading has been revised on Lots 8, 15, 16, 21, 24 & 41  
 2. The total area included in this plan is 1.706 Acres.  
 I further certify that the Sediment & Erosion control measures, as previously approved, will not be affected; the grading is substantially the same as originally approved, the building setbacks comply with F.D.P. Phase 85-A recorded in Plat 3954 and the lots have the same geometric configuration as shown on the respective recorded subdivision plat

10/13/78  
DATE



*Donald B. Sackett*  
DONALD B. SACKETT  
Registered Land Surveyor  
Md. No. G059

NOTE  
An approved copy of SDP 78-91-C, showing Sediment & Erosion Control will be kept on-site during construction

APPROVED FOR PUBLIC WATER AND PUBLIC SEWERAGE SYSTEMS,  
HOWARD COUNTY HEALTH DEPARTMENT  
*James P. Ryan* 12-14-78  
HEALTH OFFICER DATE  
APPROVED HOWARD COUNTY OFFICE OF PLANNING & ZONING  
*James H. Hambley* 12-18-78  
PLANNING DIRECTOR DATE  
*John W. Muschinski* 12-18-78  
CHIEF DIVISION OF LAND DEVELOPMENT DATE  
APPROVED FOR PUBLIC WATER AND PUBLIC SEWERAGE,  
STORM DRAINAGE SYSTEMS AND PUBLIC ROADS  
HOWARD COUNTY DEPARTMENT OF PUBLIC WORKS  
*Richard E. Freudenberger* 12/11/78  
DIRECTOR DATE  
*W. O. Stibard* 12-11-78  
CHIEF BUREAU OF ENGINEERING DATE

<b>CLARK • FINEFROCK &amp; SACKETT</b> ENGINEERS • PLANNERS • SURVEYORS 11315 LOCKWOOD DRIVE SILVER SPRING, MARYLAND 20904 (301) 593-3400		
DESIGNED	REVISED SITE DEVELOPMENT PLAN	SCALE
D.B.S.	LOTS 8, 15, 16, 21, 24 & 41	1"=30'
DRAWN	<b>COLUMBIA</b>	DRAWING
K.I.W.	VILLAGE OF HICKORY RIDGE	2 of 2
CHECKED	SECTION 1 AREA 5	JOB NO.
D.B.S.	5TH ELECTION DISTRICT	
DATE	HOWARD COUNTY, MARYLAND	FILE NO.
Oct, 1978	FOR: COLUMBIA BUILDERS INC.	1327-X
	606 American City Building	
	Columbia Md. 21044	
	SDP-79-66	See Also: 1290-3E

11-27-78  
*AWM*

MATCH SHEET 1 of 2