

SEE SHEET 1A

- SITE ANALYSIS**
- Zoning: New Town (Apartments)
 - Area: 14,648 Acres (637,980±)
 - No. of Units Permitted: 219
 - No. of Units Shown: 150
 - No. of Parking Spaces Required: 225
 - No. of Parking Spaces Provided: 300
 - Maximum Building Coverage Permitted (30%) = 191,324±
 - Building Coverage Shown (13%) = 121,500±
 - Green Area Provided (53%) = 378,500±
 - Topography and Boundary Compiled From Actual Field Survey.
 - Parcel "E-1" Recorded in Plat Book 27, Folio 46.
 - Parcel "E-1" is Located on Tax Maps 36 and 42, Parcel 383.
 - Public Water and Sewer to Be Utilized.
 - All Building Setback Restrictions To Be Complied With Those Setforth in Final Development Plan Phase 127A-1 Recorded in Plat Book 28, Folios 113 Thru 120.
 - Density: 10.2 Units Per Acre.
 - All Roadways And Parking Areas To Be Privately Owned And Maintained.
 - Installation of All Traffic Control Devices Shall Be In Accordance With The 1971 Edition of The Manual of Uniform Traffic Control Devices.

See Match Line "A" - "A" Sheets 2 And 3 of

- LEGEND**
- Contour Interval: 2 Ft.
 - Existing Contours: [Symbol]
 - Proposed Contours: [Symbol]
 - Spot Elevations: +20±
 - Direction of Drainage: [Symbol]
 - Existing Trees to Be Retained: [Symbol]
 - Proposed Storm Drain Pipe: [Symbol]
 - 100 Year Flood Elevation: [Symbol]
 - Existing Storm Drainage: [Symbol]
 - Retaining Wall: [Symbol]
 - Area Drain: [Symbol]
 - All Fillet Radii are 5 Ft.

Note: Trees shown to be preserved are to be inspected and evaluated in field. Deviations are at the direction of field superintendent.



- GENERAL NOTES**
- Any damage to county owned rights of way or paving shall be corrected at the developer's expense.
 - All materials and construction shall be in accordance with the Howard County Road Construction Code and Specifications.
 - Retaining Walls over 3 Ft. in height shall have guardrails.
 - Water and Sewer house connections shall be installed in accordance with Contract #2811-745 as approved by the How. Co. Bureau of Engineering.
 - All Buildings are to contain Single Family Units consisting of 3 levels.

- SHEET INDEX**
- SITE DEVELOPMENT PLAN
 - SITE DEVELOPMENT PLAN ENHANCEMENT & DETAILS
 - SITE DEVELOPMENT PLAN
 - SITE DEVELOPMENT PLAN
 - SITE DEVELOPMENT PLAN, SEDIMENT & EROSION CONTROL PLAN, & DRAINAGE AREA MAP
 - SITE DEVELOPMENT PLAN, SEDIMENT & EROSION CONTROL PLAN, & DRAINAGE AREA MAP
 - SITE DEVELOPMENT PLAN, SEDIMENT & EROSION CONTROL PLAN, & DRAINAGE AREA MAP
 - SITE DEVELOPMENT PLAN, SEDIMENT & EROSION CONTROL PLAN, & DRAINAGE AREA MAP
 - LANDSCAPE PLANTING PLAN
 - LANDSCAPE PLANTING PLAN
 - LANDSCAPE PLANTING PLAN
 - LANDSCAPE PLANTING PLAN

DATE	REVISIONS	BY
10/11/78	ADD WALKWAY & WALL AT BLDG 1	SM2
	ADD SHEETS 1A & 10A	

APPROVED
PLANNING BOARD
OF HOWARD COUNTY
DATE: 8-30-78
AWM

APPROVED FOR PUBLIC WATER AND PUBLIC SEWERAGE SYSTEMS,
HOWARD COUNTY HEALTH DEPARTMENT
10-31-78

APPROVED FOR HOWARD COUNTY OFFICE OF PLANNING & ZONING
11-1-78

APPROVED FOR PUBLIC WATER AND PUBLIC SEWERAGE,
STORM DRAINAGE SYSTEMS AND PUBLIC ROADS
HOWARD COUNTY DEPARTMENT OF PUBLIC WORKS
10/26/78

10-26-78

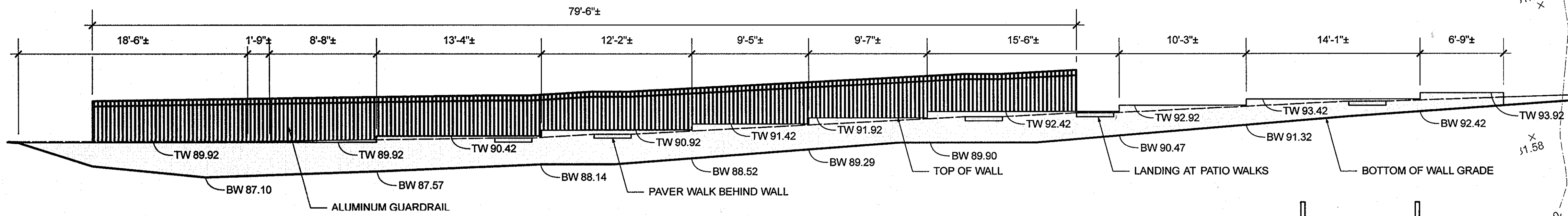
CLARK • FINEFROCK & SACKETT
ENGINEERS • PLANNERS • SURVEYORS
11315 LOCKWOOD DRIVE SILVER SPRING, MARYLAND 20904 (301) 593-3400

SITE DEVELOPMENT PLAN
PARCEL E-1
COLUMBIA
VILLAGE OF OWEN BROWN
SECTION 1 - AREA 2
6TH ELECTION DISTRICT
HOWARD COUNTY, MARYLAND
FOR: M.P. of Md., INC.
P.O. Box 201
Columbia, Md 21045

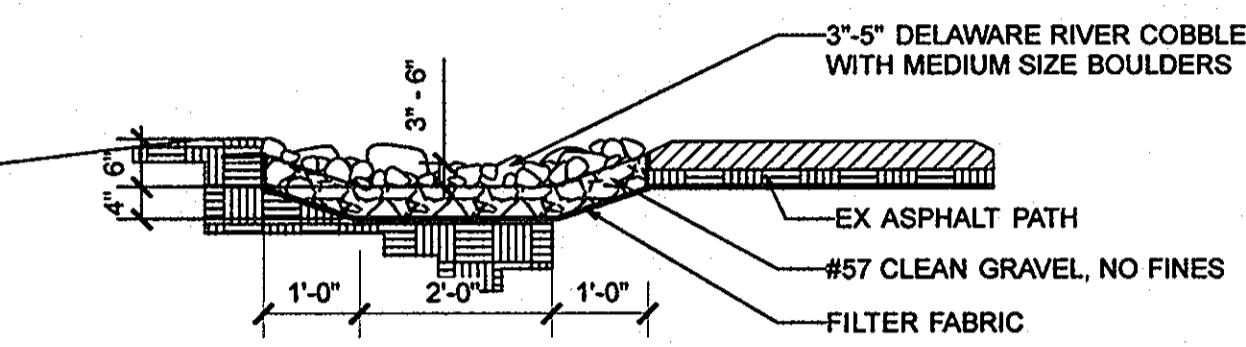
DESIGNED: D.A.B. W.R.M.E.
DRAWN: K.I.V.V.
CHECKED: D.A.B. W.R.M.E.
DATE: July, 1978

SCALE: 1"=30'
DRAWING: 10111
JOB NO.:
FILE NO.: 1356-X

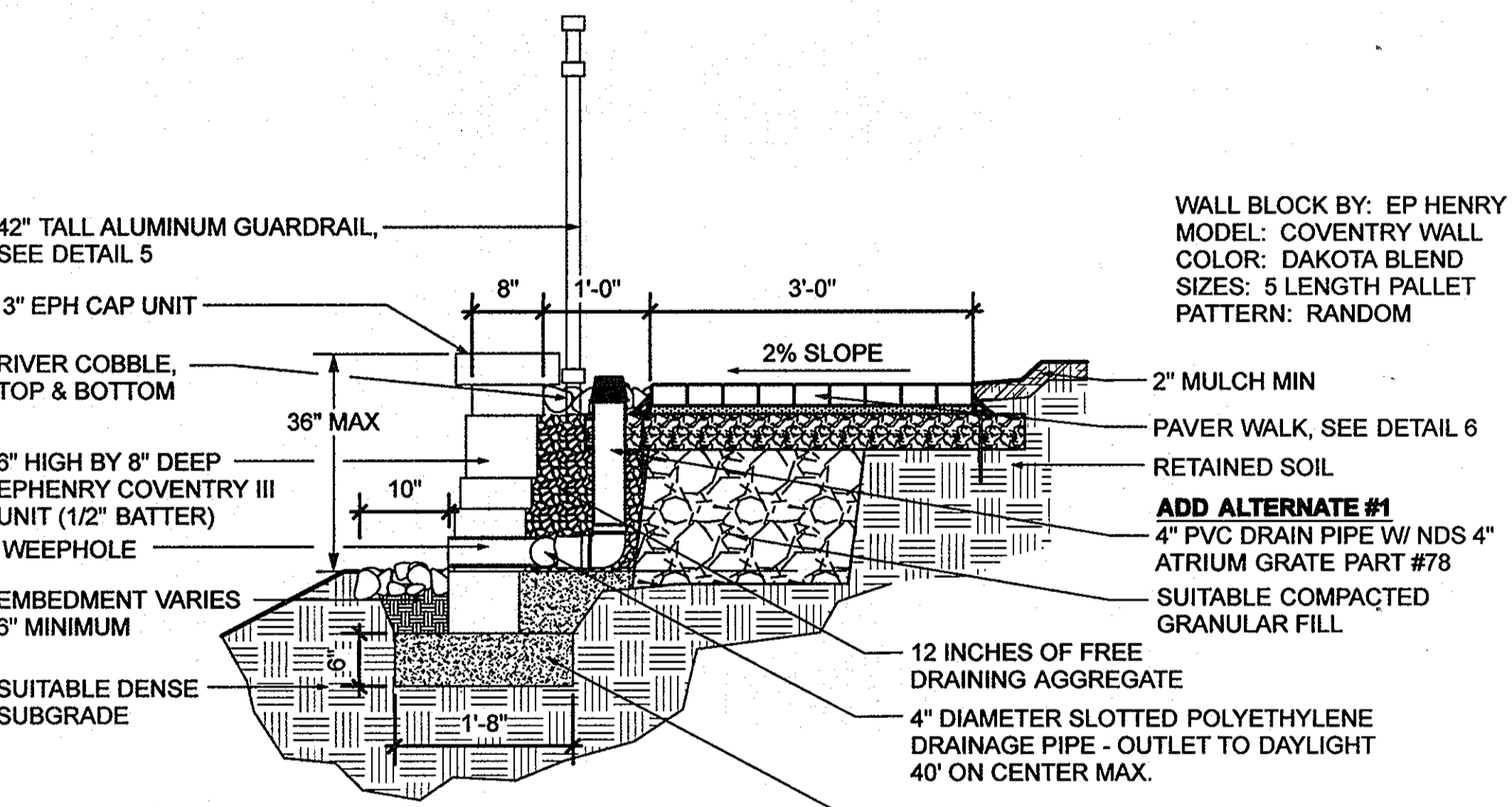
SDP-79-08c



1 Wall Elevation
Scale: 3/16" = 1'-0"

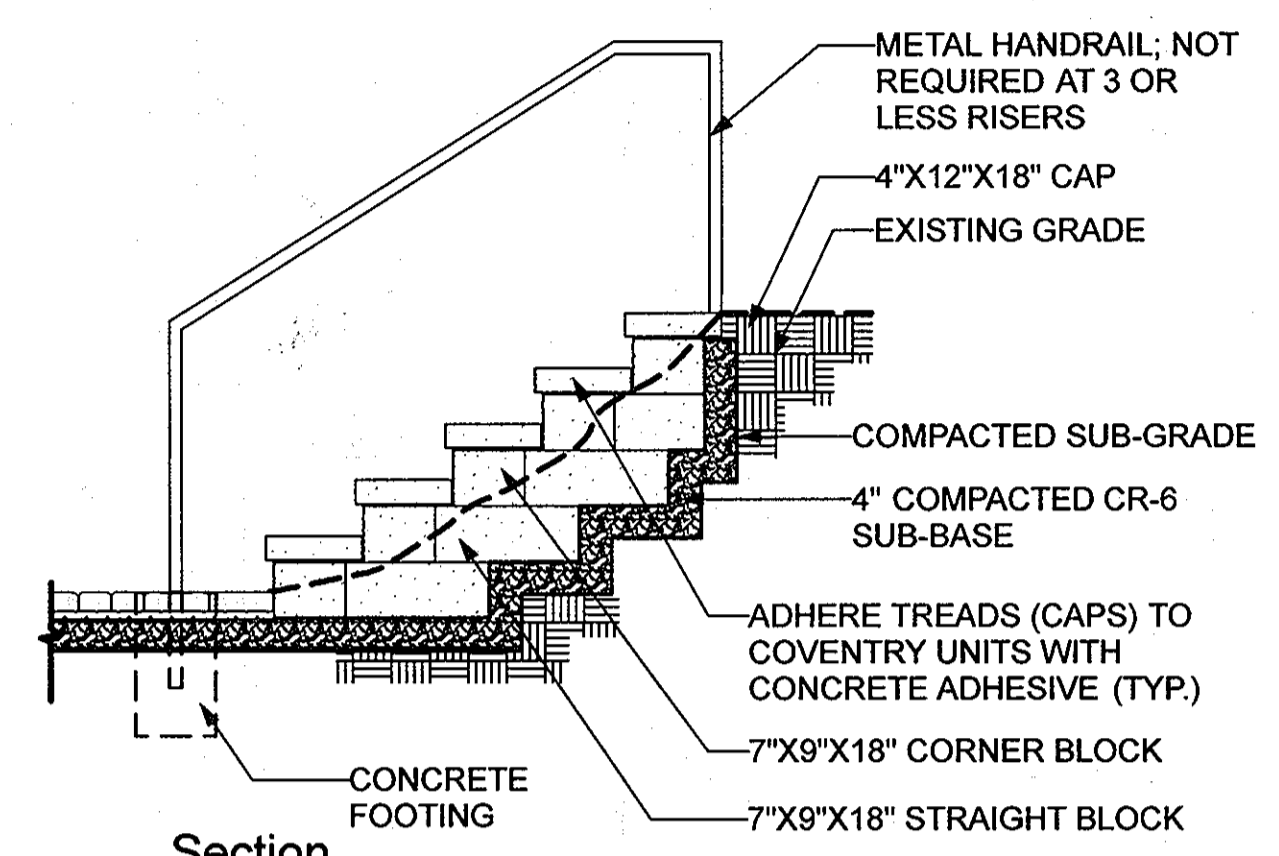


2 Cobble Swale
Scale: 1/2" = 1'-0"



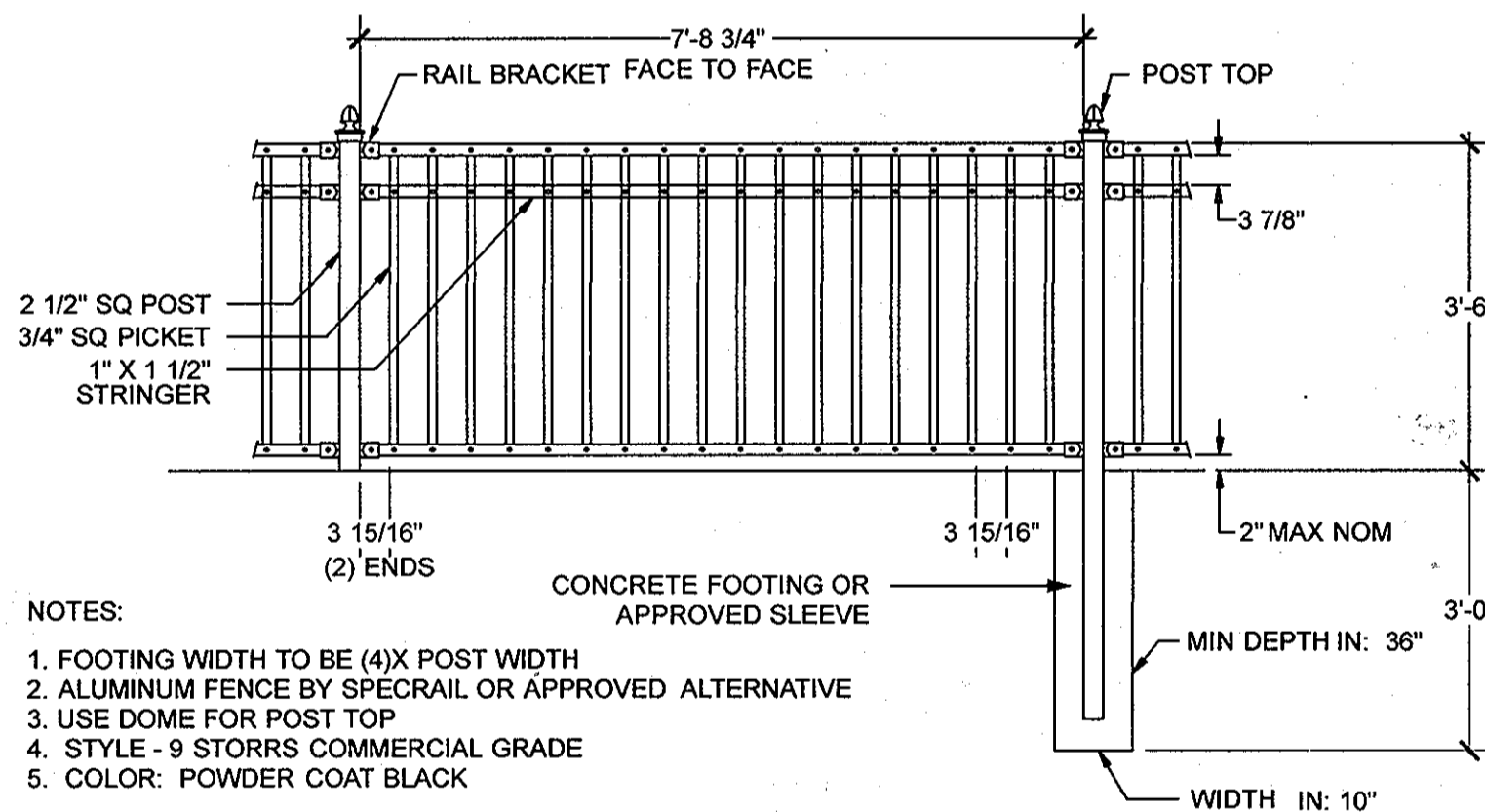
EP Henry Coventry Wall III
Typical Cross Section
Color: Dakota Blend

4 Retaining Wall
Scale: 3/4" = 1'-0"

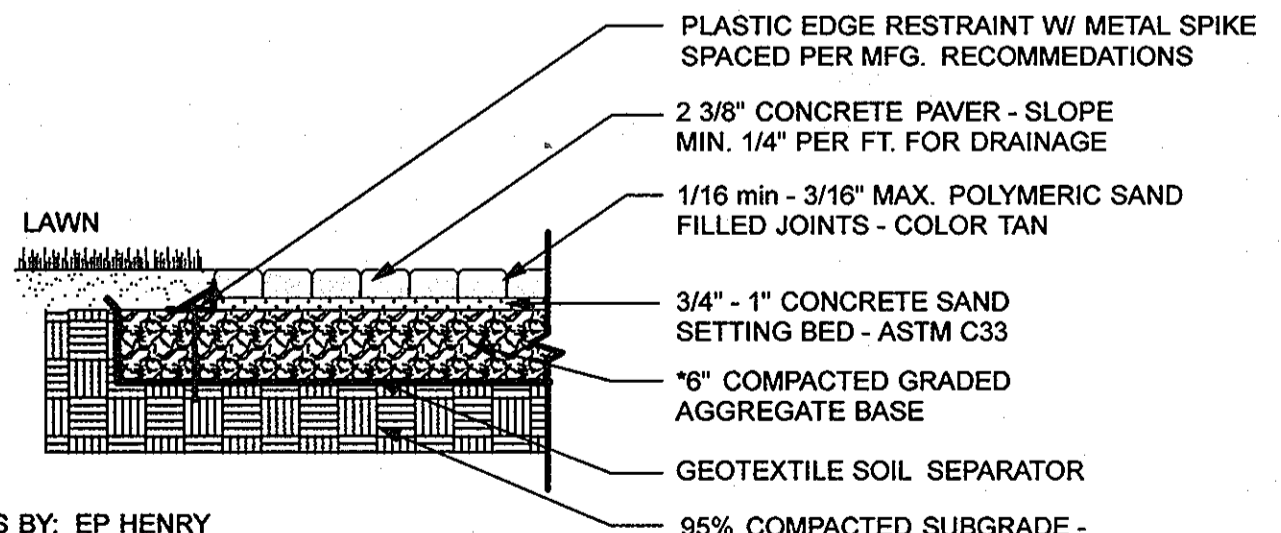


EP Henry Coventry Plus
7" Tall Riser, 3" Thick Tread

3 Steps
Scale: 1/2" = 1'-0"



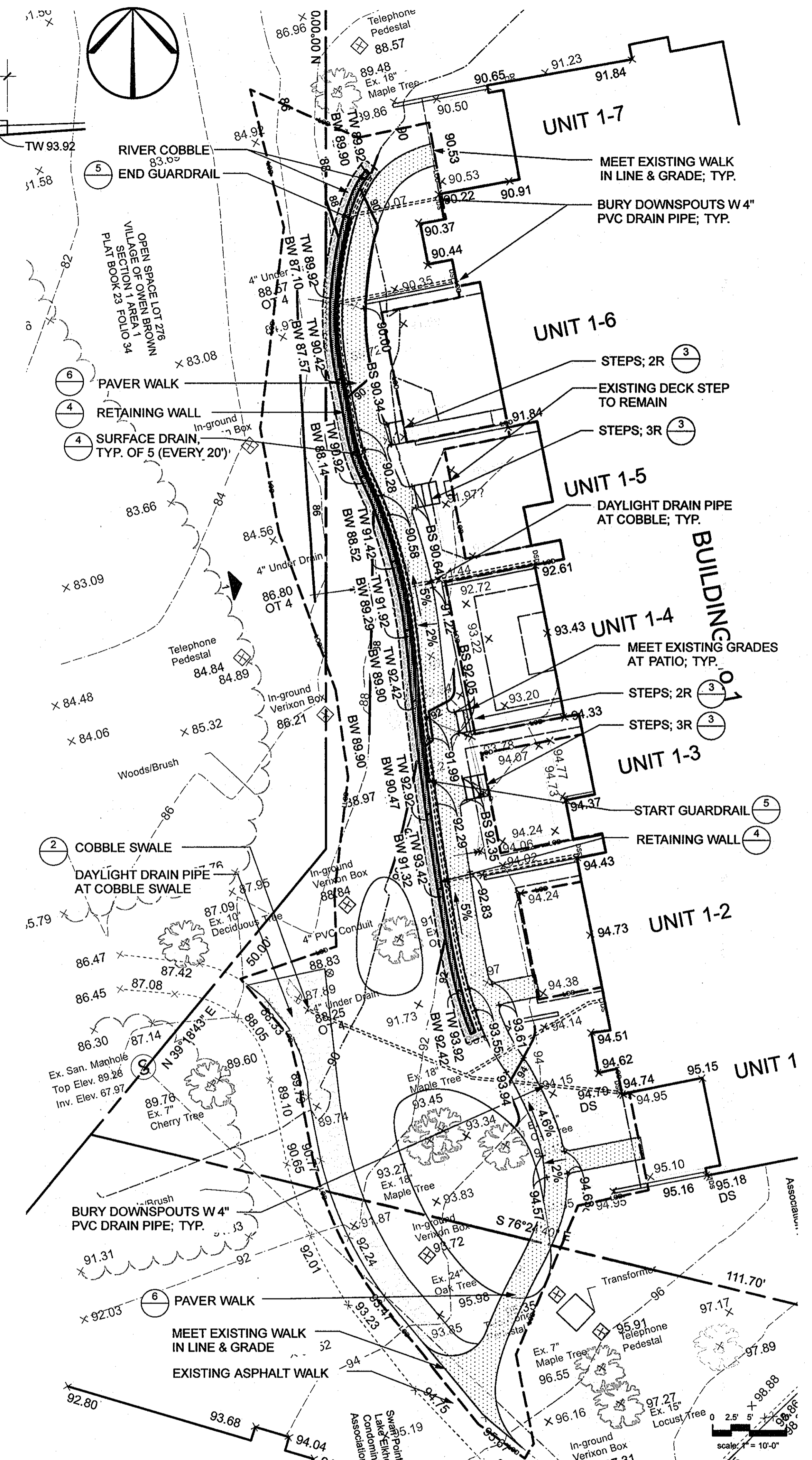
5 Guardrail
Scale: 1/2" = 1'-0"



6 Concrete Paver Walk
Scale: 3/4" = 1'-0"

NOTES:
1. FOOTING WIDTH TO BE (4)X POST WIDTH
2. ALUMINUM FENCE BY SPEC RAIL OR APPROVED ALTERNATIVE
3. USE DOME FOR POST TOP
4. STYLE - 9 STORRS COMMERCIAL GRADE
5. COLOR: POWDER COAT BLACK

NOTE: LENGTH OF GUARDRAIL MAY VARY DEPENDING ON FINAL GRADES AND ASBUILT WALL HEIGHTS. GUARDRAIL SHALL BE PROVIDED AT ANY LOCATION WHERE THE WALK IS MORE THAN 30" MEASURED VERTICALLY TO THE GRADE BELOW AT ANY POINT WITHIN 36" HORIZONTALLY TO THE OF THE OPEN SIDE.



7 Grading Plan
Scale: 1" = 10 ft

APPROVED: HOWARD COUNTY DEPARTMENT OF PLANNING & ZONING
 Director: *Mark D. Uyle* Date: 1/16/12
 Chief, Division of Land Development: *John S. ...* Date: 1/15/12
 Chief, Development Engineering Division: *...* Date: 1/16/12

CALL "MISS UTILITY" AT
1-800-257-7777
48 Hours Before Start Of Construction

SLATER ASSOCIATES, INC.
5560 Sterrett Pl. Suite 302
Columbia, MD 21044
410.992.0212 - fax
410.992.0001 - phone
www.slatersassociates.com
Landscape Architecture • Site Planning • Garden Design

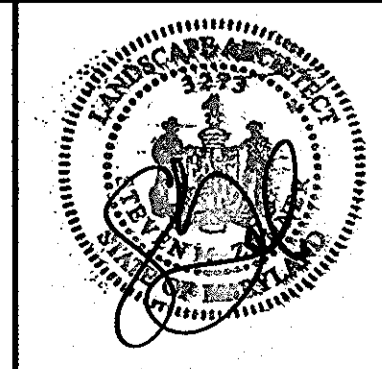
Rev.	Date	Description	By
1	10/1/12	ADD WALKWAY & WALL BEHIND BLDG. 1 SMZ	SMZ

Prepared For: Swan Point at Lake Elkhorn Condominium Association, Inc. 7365 Swan Point Way Columbia, MD 21046 Attn: Kathy Bestany Phone: (410) 381-8988
 Parcel Owner: Swan Point at Lake Elkhorn Condominium Association, Inc. Swan Point Way Columbia, MD 21045

Project Name: REVISED SITE DEVELOPMENT PLAN
 PARCEL E-1
COLUMBIA
 VILLAGE OF OWEN BROWN
 ELECTION DISTRICT NO. 6 SECTION-1 AREA-2
 HOWARD COUNTY, MARYLAND

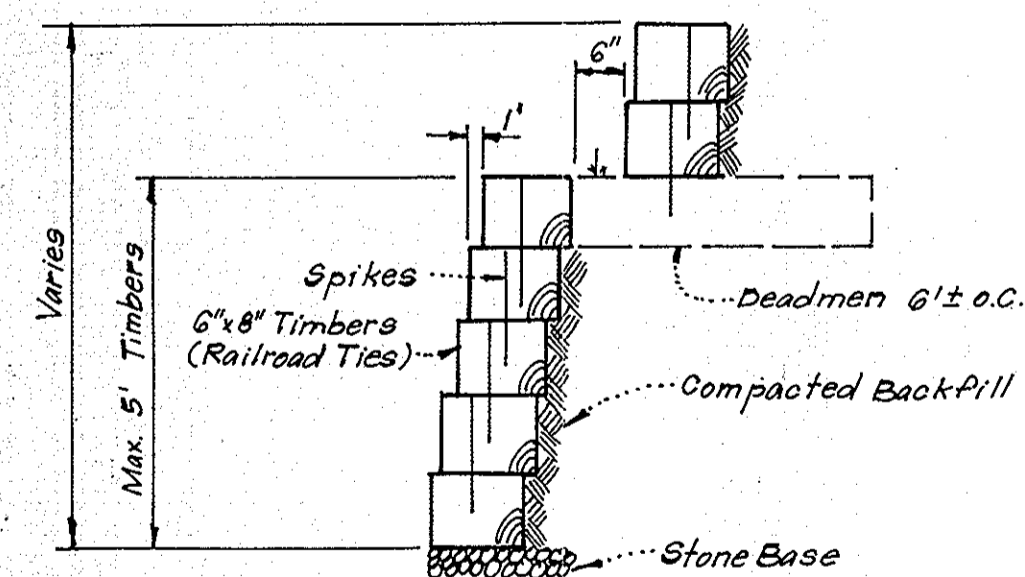
Date: 10/1/12
 Drawn By: SZ
 Approved By: JS
 Scale: AS NOTED
 Designed By: SZ
 Project No:
 Tax Map-Grid: 36-15
 Zoning: NT

Sheet Title: Site Development Plan, Enlargement & Details



Sheet Number: SHEET 1 OF 11
 1A

OPEN SPACE LOT 276
VILLAGE OF OWEN BROWN
SECTION 1 AREA 1
PLAT BOOK 23 FOLIOS 34, 35 & 36



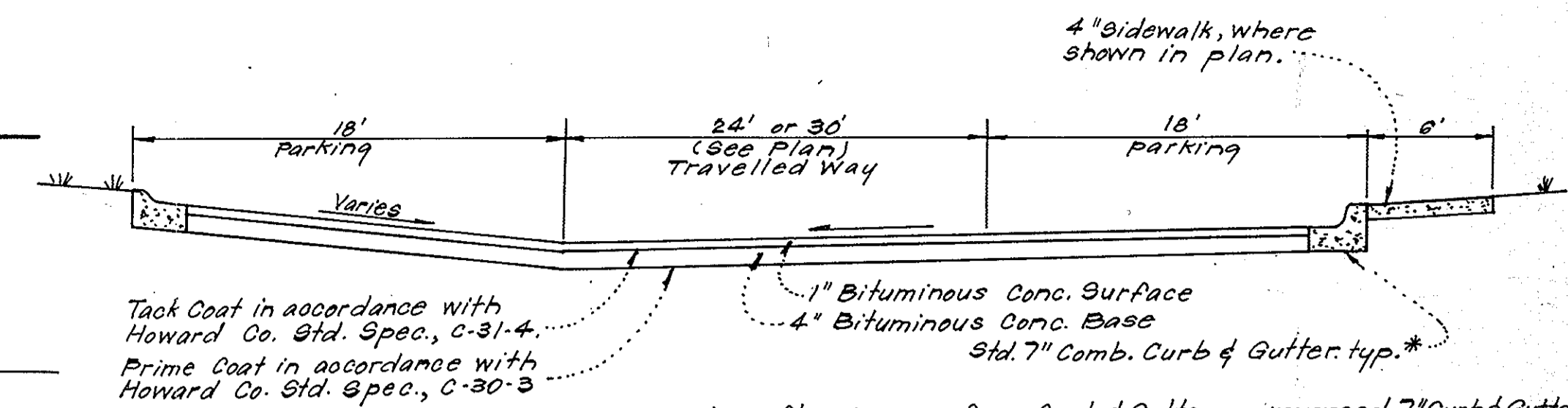
TIMBER RETAINING WALL
No Scale

APPROVED FOR PUBLIC WATER AND PUBLIC SEWERAGE SYSTEMS,
HOWARD COUNTY HEALTH DEPARTMENT
Jayman Burgess 10-21-78
COUNTY HEALTH OFFICER DATE

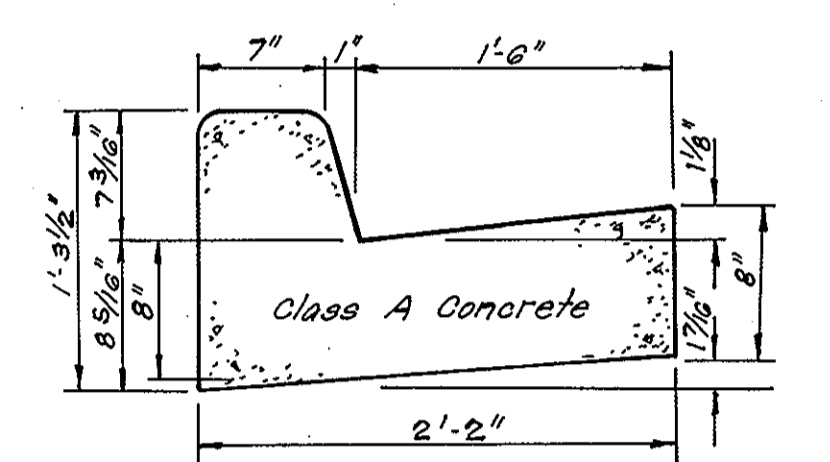
APPROVED HOWARD COUNTY OFFICE OF PLANNING & ZONING
Richard E. Freudenberger 11-1-78
PLANNING DIRECTOR DATE

APPROVED FOR PUBLIC WATER AND PUBLIC SEWERAGE,
STORM DRAINAGE SYSTEMS AND PUBLIC ROADS
HOWARD COUNTY DEPARTMENT OF PUBLIC WORKS
Richard E. Freudenberger 10/26/78
DIRECTOR DATE

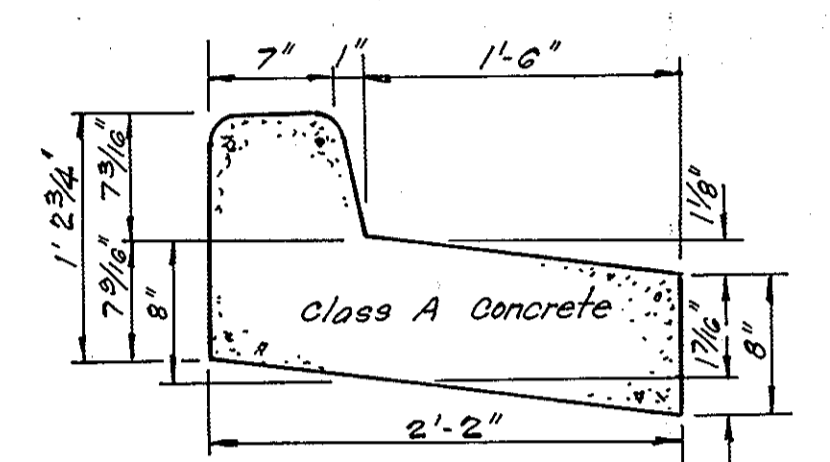
Richard E. Freudenberger 10-24-78
CHIEF BUREAU OF ENGINEERING DATE



TYPICAL PAVING SECTION - PRIVATE DRIVE AND PRIVATE PARKING
No Scale



STANDARD 7" COMBINATION CURB & GUTTER
No Scale



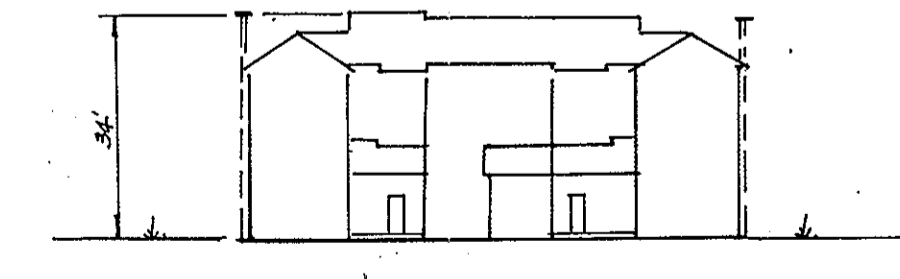
REVERSE 7" COMBINATION CURB & GUTTER
No Scale

Bituminous Concrete Surface	1/2"	Band C-3	Final Phase
Bituminous Concrete Base (Placed in One Course)	5"	Band C-2 or C-3	First Phase

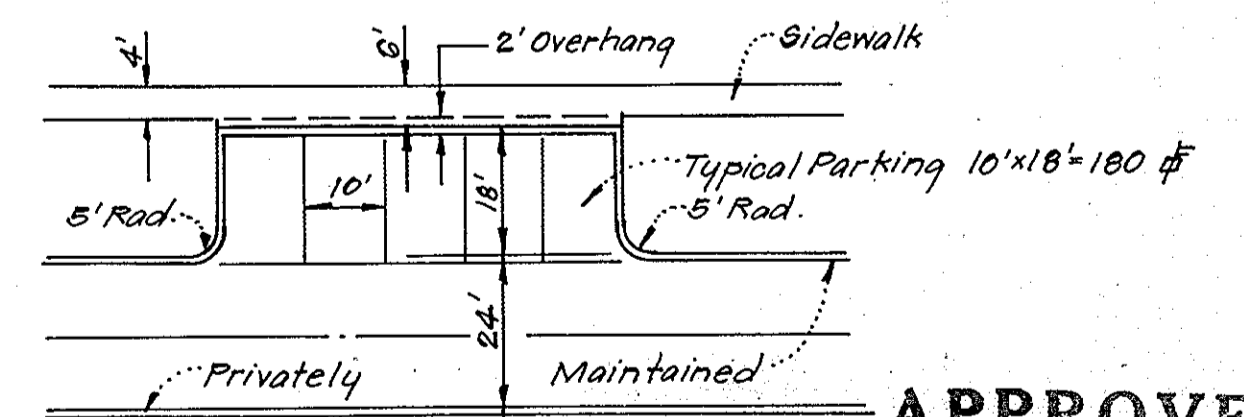
Clearing and Grading
Subgrade
Base Course
Surface Course

Article C-1
Article C-2
Article C-31 or C-33
Article C-31

PAVING SECTION FOR PUBLIC ROADS AND ENTRANCES TO PUBLIC ROADS
No Scale



TYPICAL BUILDING ELEVATION
No Scale

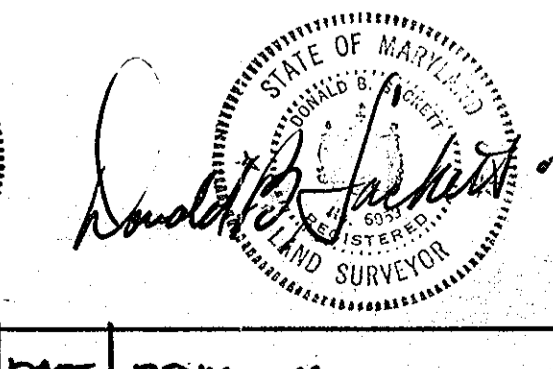
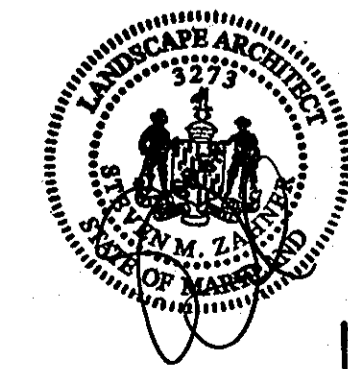


TYPICAL PARKING
No Scale

APPROVED
PLANNING BOARD
OF HOWARD COUNTY
DATE 8-30-78

Existing Lake
Water Level = 204.6

OPEN SPACE LOT 276
VILLAGE OF OWEN BROWN
SECTION 1 AREA 1
PLAT BOOK 23 FOLIOS 34, 35 & 36



CLARK • FINEFROCK & SACKETT
ENGINEERS • PLANNERS • SURVEYORS

11315 LOCKWOOD DRIVE SILVER SPRING, MARYLAND 20904 (301) 593-3400

DESIGNED: D.A.B. W.R.M.E. SCALE: 1"=30'

DRAWN: K.I.W. DRAWING: 2 of 11

CHECKED: D.A.B. W.R.M.E. JOB NO.

DATE: 10/12/78 BY: S.M.T. DATE: July 1978

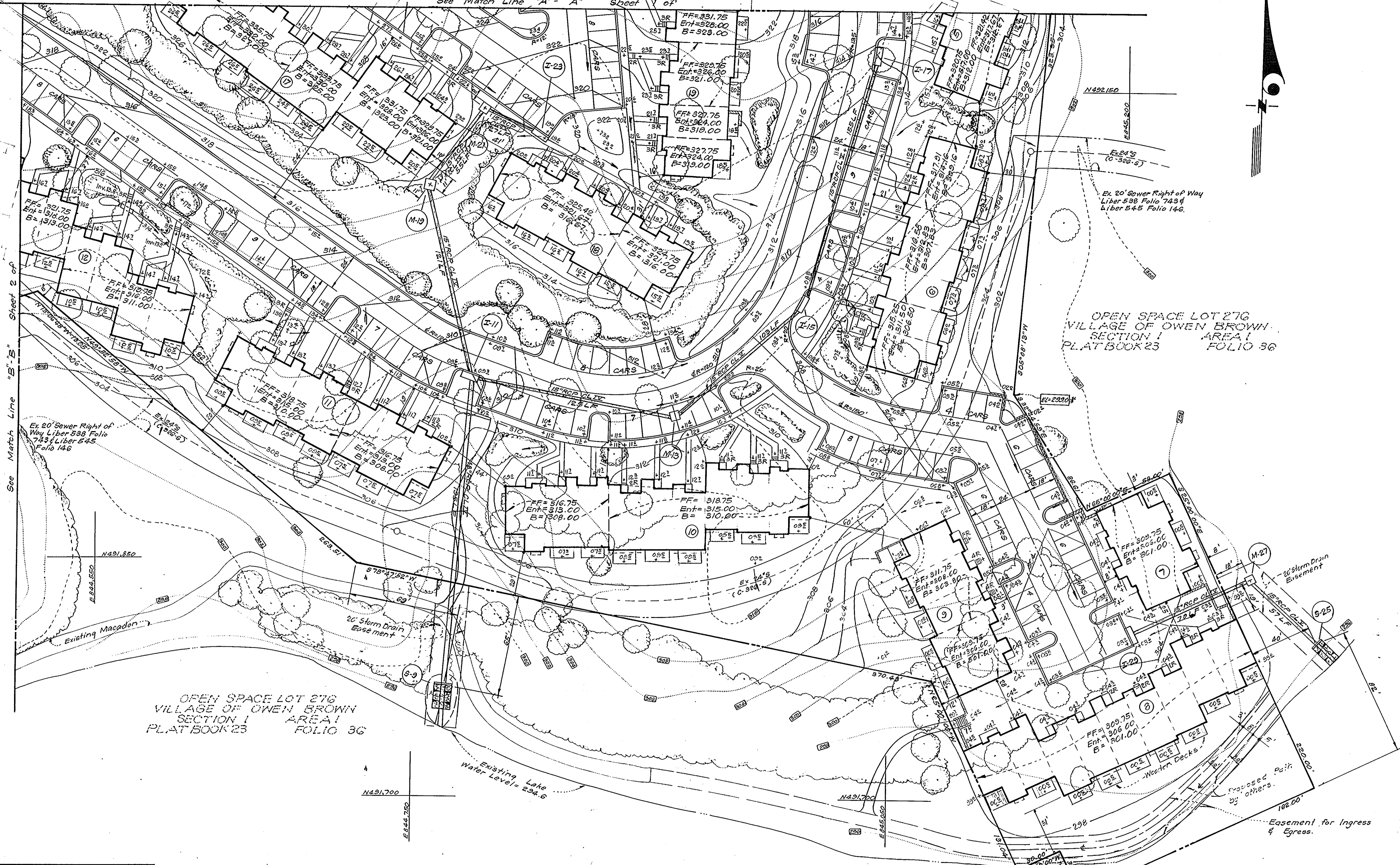
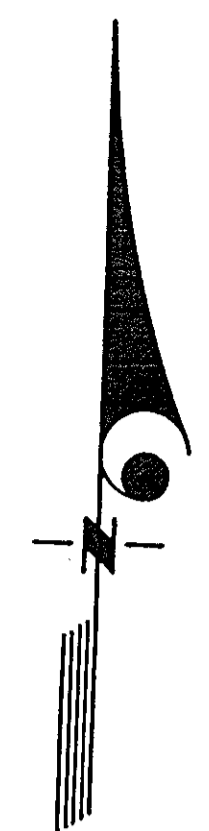
SITE DEVELOPMENT PLAN
PARCEL 5-1
COLUMBIA
VILLAGE OF OWEN BROWN
SECTION 1 AREA 2
6th ELECTION DISTRICT
HOWARD COUNTY, MARYLAND

FOR: M.P. of Md. INC.
P.O. Box 231
Columbia, Md 21045

FILE NO. 1356-X

SDP-79-08-

See Match Line "A" - "A" Sheet 1 of 1



OPEN SPACE LOT 276
VILLAGE OF OWEN BROWN
SECTION 1 AREA 1
PLAT BOOK 23 FOLIO 36

OPEN SPACE LOT 276
VILLAGE OF OWEN BROWN
SECTION 1 AREA 1
PLAT BOOK 23 FOLIO 36

APPROVED FOR PUBLIC WATER AND PUBLIC SEWERAGE SYSTEMS, HOWARD COUNTY HEALTH DEPARTMENT
APPROVED FOR PLANNING & ZONING
APPROVED FOR PUBLIC WATER AND PUBLIC SEWERAGE, STORM DRAINAGE SYSTEMS AND PUBLIC ROADS, HOWARD COUNTY DEPARTMENT OF PUBLIC WORKS

APPROVED
PLANNING BOARD
OF HOWARD COUNTY
DATE 8-30-78

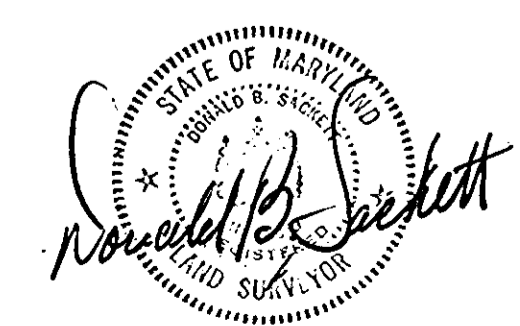
JMM

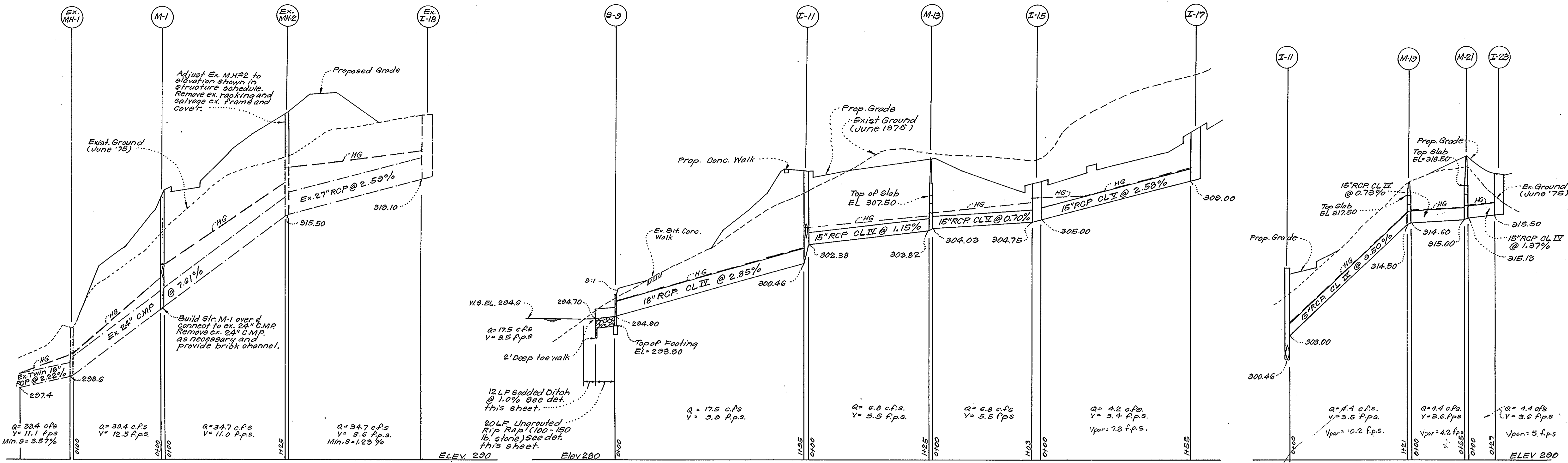
APPROVED FOR PUBLIC WATER AND PUBLIC SEWERAGE SYSTEMS, HOWARD COUNTY HEALTH DEPARTMENT
Joseph Bondhus 10-31-78
COUNTY HEALTH OFFICER DATE

APPROVED FOR PLANNING & ZONING
William Musselman 11-1-78
PLANNING DIRECTOR DATE
CHIEF DIVISION OF LAND DEVELOPMENT

APPROVED FOR PUBLIC WATER AND PUBLIC SEWERAGE, STORM DRAINAGE SYSTEMS AND PUBLIC ROADS, HOWARD COUNTY DEPARTMENT OF PUBLIC WORKS
Richard E. Brendenbarger 10/26/78
DIRECTOR DATE
W.C. Smith 10/26/78
CHIEF BUREAU OF ENGINEERING DATE

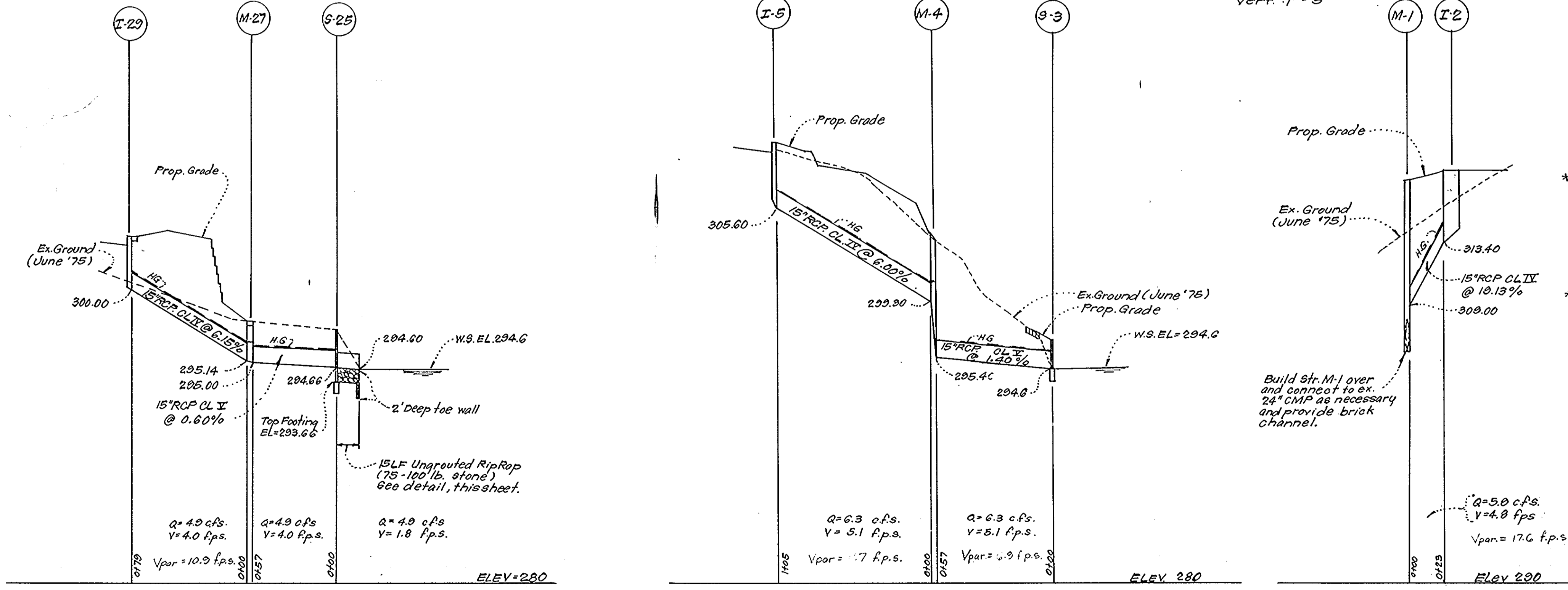
		CLARK • FINEROCK & SACKETT ENGINEERS • PLANNERS • SURVEYORS	
11315 LOCKWOOD DRIVE		SILVER SPRING, MARYLAND 20904 (301) 593 3400	
DESIGNED D.A.B. W.R.M.	SITE DEVELOPMENT PLAN PARCEL E-1 COLUMBIA		SCALE 1"=30'
DRAWN K.I.W.	VILLAGE OF OWEN BROWN SECTION 1 AREA 2		DRAWING 3 of 11
CHECKED D.A.B. W.R.M.	4th ELECTION DISTRICT HOWARD COUNTY, MARYLAND		JOB NO.
DATE July, 1978	FOR: M.P. of Md., INC. P.O. Box 291 Columbia, Md 21045		FILE NO. 1356-X





STORM DRAINAGE PROFILES

SCALE: Horiz. 1"=50'
Vert. 1"=5'

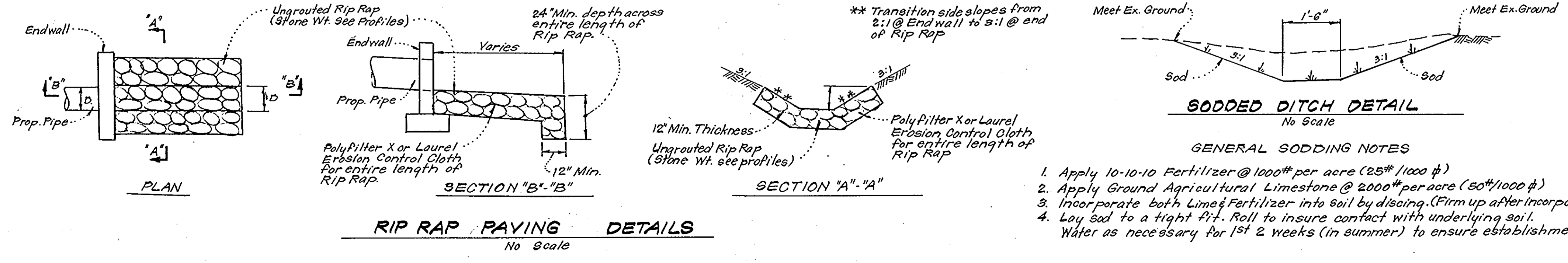


STRUCTURE SCHEDULE*						
NO	TYPE	ELEVATION		REMARKS	INVERT	
		UPPER	LOWER		IN	OUT
M-1	A-1 Manhole	317.50	317.93	How. Co. Std. Fig. 3.01	48"Ø	300.00
I-2	A-10 Inlet	318.00	317.93	How. Co. Std. Fig. 4.02	W=2'6"	313.40
M-2	A-1 Manhole	Meet Ex. Ground	—	Adjust Ex. Manhole to How. Co. Std. Fig. 3.01	—	—
S-3	C-End wall	—	—	How. Co. Std. Fig. 5.21-1	15"Ø	294.60
M-4	B-Manhole	309.90	309.14	How. Co. Std. Fig. 3.03	48"Ø	295.40
I-5	A-10 Inlet	310.00	310.00	How. Co. Std. Fig. 4.02	W=2'6"	305.60
S-9	C-End wall	—	—	How. Co. Std. Fig. 5.21-1	18"Ø	294.90
I-11	A-10 Inlet	310.10	309.80	How. Co. Std. Fig. 4.02	W=3'0"	300.40
M-13	B-Manhole	311.23	309.14	How. Co. Std. Fig. 3.03	48"Ø	304.03
I-15	A-10 Inlet	309.33	309.14	How. Co. Std. Fig. 4.02	W=2'6"	305.00
I-17	A-10 Inlet	314.54	313.86	How. Co. Std. Fig. 4.02	W=2'6"	309.00
M-19	B-Manhole	318.90	318.90	How. Co. Std. Fig. 3.03	48"Ø	314.60
M-21	B-Manhole	321.40	319.02	How. Co. Std. Fig. 3.03	48"Ø	315.13
I-23	A-10 Inlet	320.00	319.60	How. Co. Std. Fig. 4.02	W=2'6"	315.50
S-25	C-End wall	—	—	How. Co. Std. Fig. 5.21-1	15"Ø	294.66
M-27	B-Manhole	297.90	297.90	How. Co. Std. Fig. 3.03	48"Ø	295.14
I-29	A-10 Inlet	309.70	303.60	How. Co. Std. Fig. 4.02	W=2'6"	300.00

PIPE SCHEDULE		
SIZE	TYPE	LENGTH
15"	RCP Class IV	372 LF
18"	RCP Class IV	595 LF
18"	RCP Class IV	195 LF

Reviewed by: *[Signature]*
and meets Technical Requirements
[Signature]
U.S. Soil Conservation Service
THIS DEVELOPMENT PLAN IS APPROVED FOR SOIL EROSION AND SEDIMENT CONTROL BY THE HOWARD COUNTY CONSERVATION DISTRICT.
Approved: *[Signature]*
Howard S. C. Jr.

APPROVED FOR PUBLIC WATER AND PUBLIC SEWERAGE SYSTEMS, HOWARD COUNTY HEALTH DEPARTMENT
 COUNTY HEALTH OFFICER: *[Signature]* DATE: 10-31-78
 APPROVED: HOWARD COUNTY OFFICE OF PLANNING & ZONING
 PLANNING DIRECTOR: *[Signature]* DATE: 11-1-78
 CHIEF DIVISION OF LAND DEVELOPMENT
 APPROVED FOR PUBLIC WATER AND PUBLIC SEWERAGE, STORM DRAINAGE SYSTEMS AND PUBLIC ROADS HOWARD COUNTY DEPARTMENT OF PUBLIC WORKS
 DIRECTOR: *[Signature]* DATE: 10-26-78
 CHIEF BUREAU OF ENGINEERING



APPROVED
PLANNING BOARD
OF HOWARD COUNTY
DATE: 8-30-78
[Signature]



CLARK • FINEFROCK & SACKETT
ENGINEERS • PLANNERS • SURVEYORS
11315 LOCKWOOD DRIVE SILVER SPRING, MARYLAND 20904 (301) 593-3400

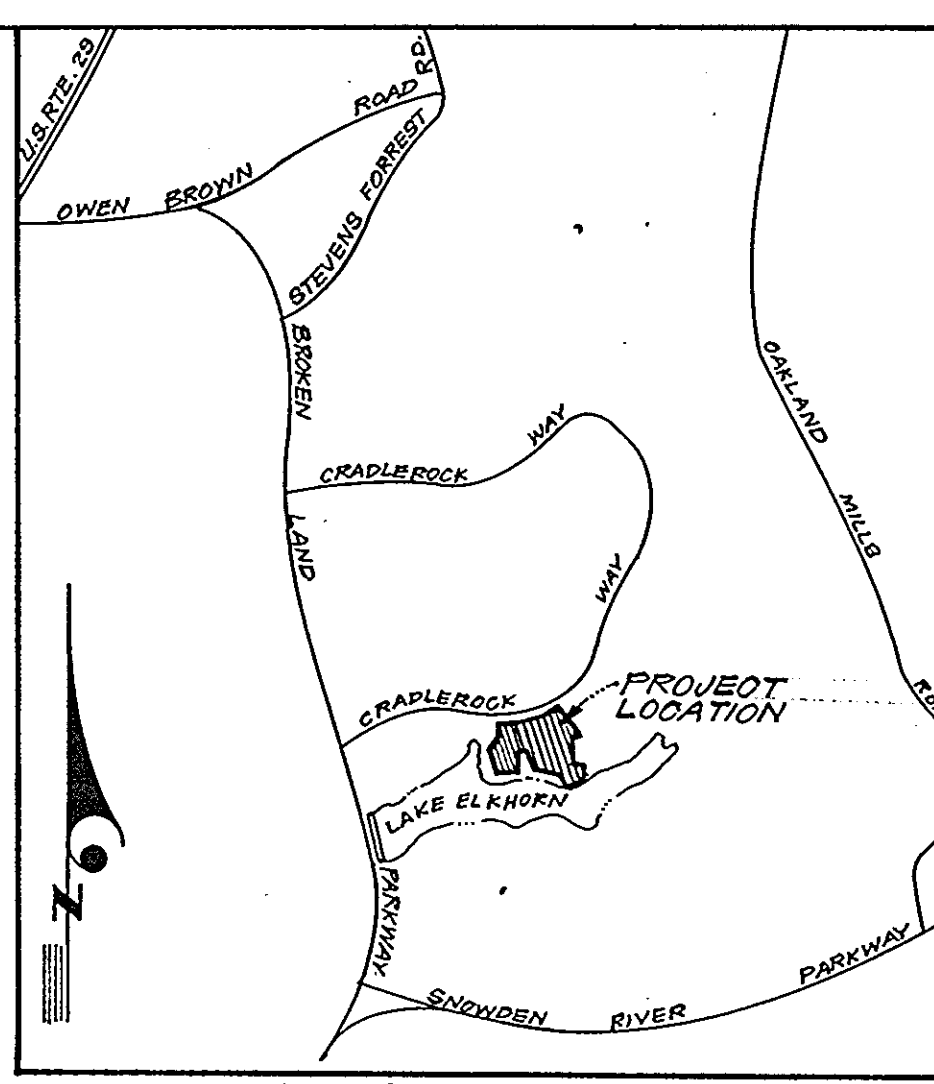
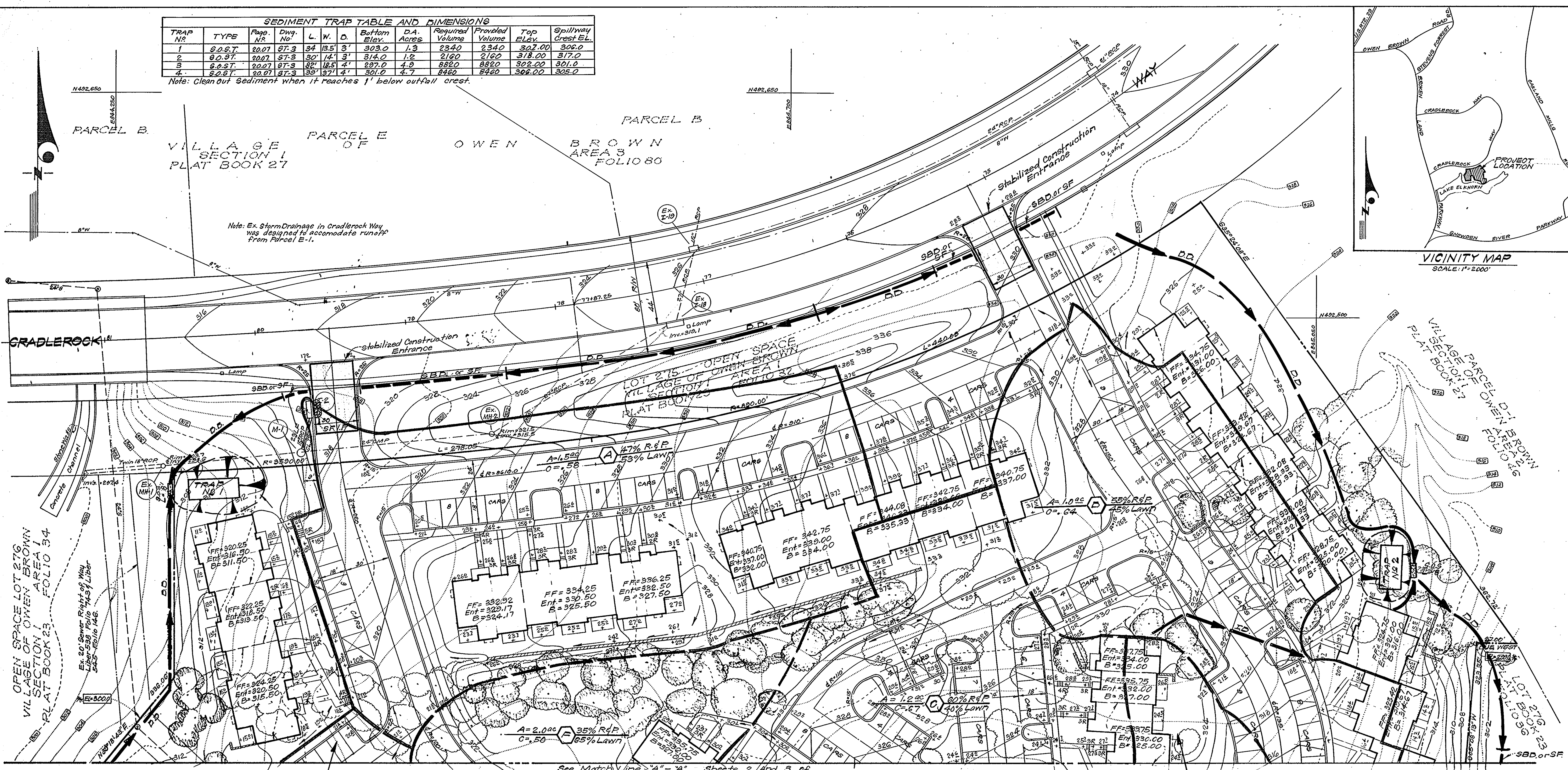
DESIGNED: D.A.B. SCALE: As Shown
 DRAWN: K.I.W. DRAWING: 4 of 11
 CHECKED: D.A.B. JOB NO.:
 DATE: July, 1978 FOR: M.P. of Md., Inc. P.O. Box 291 Columbia, Maryland 21045 FILE NO.: 1356-X

COLUMBIA
VILLAGE OF OWEN BROWN SECTION - 1 AREA - 2 6th ELECTION DISTRICT HOWARD COUNTY, MARYLAND

SDP-79-08

SEDIMENT TRAP TABLE AND DIMENSIONS												
TRAP No.	TYPE	Page No.	Dwg. No.	L.	W.	D.	Bottom Elev.	D.A. Acres	Required Volume	Provided Volume	Top Elev.	Spillway Crest EL.
1	S.O.S.T.	20.07	ST-3	34	13.5	3'	303.0	1.3	2340	2340	302.00	300.0
2	S.O.S.T.	20.07	ST-3	30	14	3'	314.0	1.2	2160	2160	318.00	317.0
3	S.O.S.T.	20.07	ST-3	32	18.5	4'	297.0	4.9	8820	8820	302.00	301.0
4	S.O.S.T.	20.07	ST-3	33	37	4'	301.0	4.7	8460	8460	306.00	305.0

Note: Clean Out Sediment when it reaches 1' below outfall crest.



VICINITY MAP
SCALE: 1"=2000'

See Match Line "A"- "A" Sheets 2 And 3 of
 A=1.300 B 70% R&P 30% Lawn
 C=0.74

- LEGEND**
- Contour Interval 2 FT
 - Existing Contours
 - Proposed Contours
 - Spot Elevations +20'
 - Direction of Drainage
 - Existing Trees To Be Retained
 - Proposed Storm Drain Pipe
 - 100 Year Flood Elevation
 - Existing Storm Drainage
 - Retaining Wall
 - Area Drain
 - All Fillet Radii are 5 Ft.
 - Diversion Dike
 - Straw Bale Dike or Silt Fence SBD or SF
 - Stone Filter Inlet Protection
 - Stabilized Construction Entrance
 - Sediment Trap
 - Interceptor Dike I.D.

A=0.800 B 40% R&P 60% Lawn
 C=0.55

APPROVED FOR PUBLIC WATER AND PUBLIC SEWERAGE SYSTEMS,
 HOWARD COUNTY HEALTH DEPARTMENT
 COUNTY HEALTH OFFICER: *James H. Brown* 10-31-78
 APPROVED HOWARD COUNTY OFFICE OF PLANNING & ZONING
 PLANNING DIRECTOR: *John W. Murrellman* 11-1-78
 CHIEF DIVISION OF LAND DEVELOPMENT
 APPROVED FOR PUBLIC WATER AND PUBLIC SEWERAGE,
 STORM DRAINAGE SYSTEMS AND PUBLIC ROADS
 HOWARD COUNTY DEPARTMENT OF PUBLIC WORKS
 DIRECTOR: *Richard E. Freudenberger* 10/26/78
 CHIEF BUREAU OF ENGINEERING: *W.D. Albert* 10-26-78

Reviewed for *Howard* S.C.D.
 Name
 and meets Technical Requirements
 Signature: *C. Wayne Ray* 10-20-78
 Date
 U.S. Soil Conservation Service

DEVELOPER'S CERTIFICATE
 I certify that all development and/or construction will be done according to this plan of development and plan for Erosion and Sediment Control, and I also authorize periodic on-site inspection by the Howard Soil Conservation District or their authorized agents as are deemed necessary. Deviation from this plan will not be made unless authorized by the Howard Soil Conservation District.

Approved: *Robert W. Fulk* 10/24/78
 Signature: *Philip H. Stevens*
 Date: 7-13-78
 Signature: *Philip H. Stevens*
 Date: 7-13-78

ENGINEER'S CERTIFICATE
 I hereby certify that this plan for Erosion and Sediment Control represents a practical and workable plan based on my personal knowledge of the site conditions and that it was prepared in accordance with the requirements of the Howard Soil Conservation District.
 Signature: *G. Nelson Clark* 7-12-78
 Date



APPROVED
 Date: 8-30-78
 Signature: *fwm*

CLARK • FINEROCK & SACKETT
 ENGINEERS • PLANNERS • SURVEYORS
 11315 LOCKWOOD DRIVE SILVER SPRING, MARYLAND 20904 (301) 593-3400

DESIGNED: D.A.B. W.R.M.
 DRAWN: K.I.W.
 CHECKED: D.A.B. W.R.M.
 DATE: July, 1978

**SITE DEVELOPMENT PLAN
 SEDIMENT & EROSION CONTROL PLAN #
 DRAINAGE AREA MAP
 PARCEL E-1
 COLUMBIA**
 VILLAGE OF OWEN BROWN
 SECTION 1
 STATION COLLECTION DISTRICT 2
 HOWARD COUNTY, MARYLAND
 FOR: M.P. & P. Md., INC.
 P.O. Box 281
 Columbia, Md 21045

SCALE: 1"=30'
 DRAWING: 50P/11
 JOB NO.:
 FILE NO.: 1386-X

OPEN SPACE LOT 276
VILLAGE OF OWEN BROWN
SECTION I AREA 1
PLAT BOOK 23 FOLIOS 34, 35 & 36



Reviewed for Howard S.C.D. Name
and meets Technical Requirements
C. Williams 10-20-78 Date
Signature
U.S. Soil Conservation Service
THIS DEVELOPMENT PLAN IS APPROVED
FOR SOIL EROSION AND SEDIMENT
CONTROL BY THE HOWARD SOIL
CONSERVATION DISTRICT.

Robert W. Friedman 10/24/78
Approved Date

DEVELOPER'S CERTIFICATE

I certify that all development and/or construction will be done according to this plan of development and plan for Erosion and Sediment Control, and I do authorize periodic on-site inspection by the Howard Soil Conservation District or their authorized agents as are deemed necessary. Deviation from this plan will not be made unless authorized by the Howard Soil Conservation District.

Philip H. Stevens 7-13-78
Signature Date
Philip H. Stevens

ENGINEER'S CERTIFICATE

I hereby certify that this plan for Erosion and Sediment Control represents a practical and workable plan based on my personal knowledge of the site conditions and that it was prepared in accordance with the requirements of the Howard Soil Conservation District.

G. Nelson Clark 7-12-78
Signature Date
G. Nelson Clark

APPROVED
PLANNING BOARD
OF HOWARD COUNTY
DATE 8-30-78
LHM



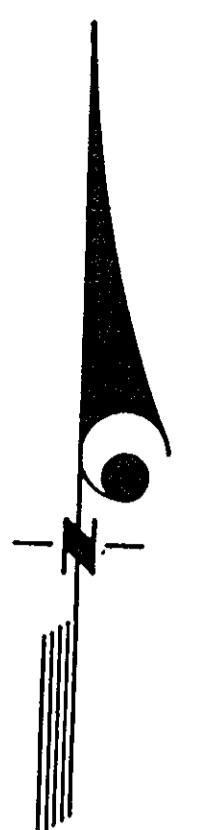
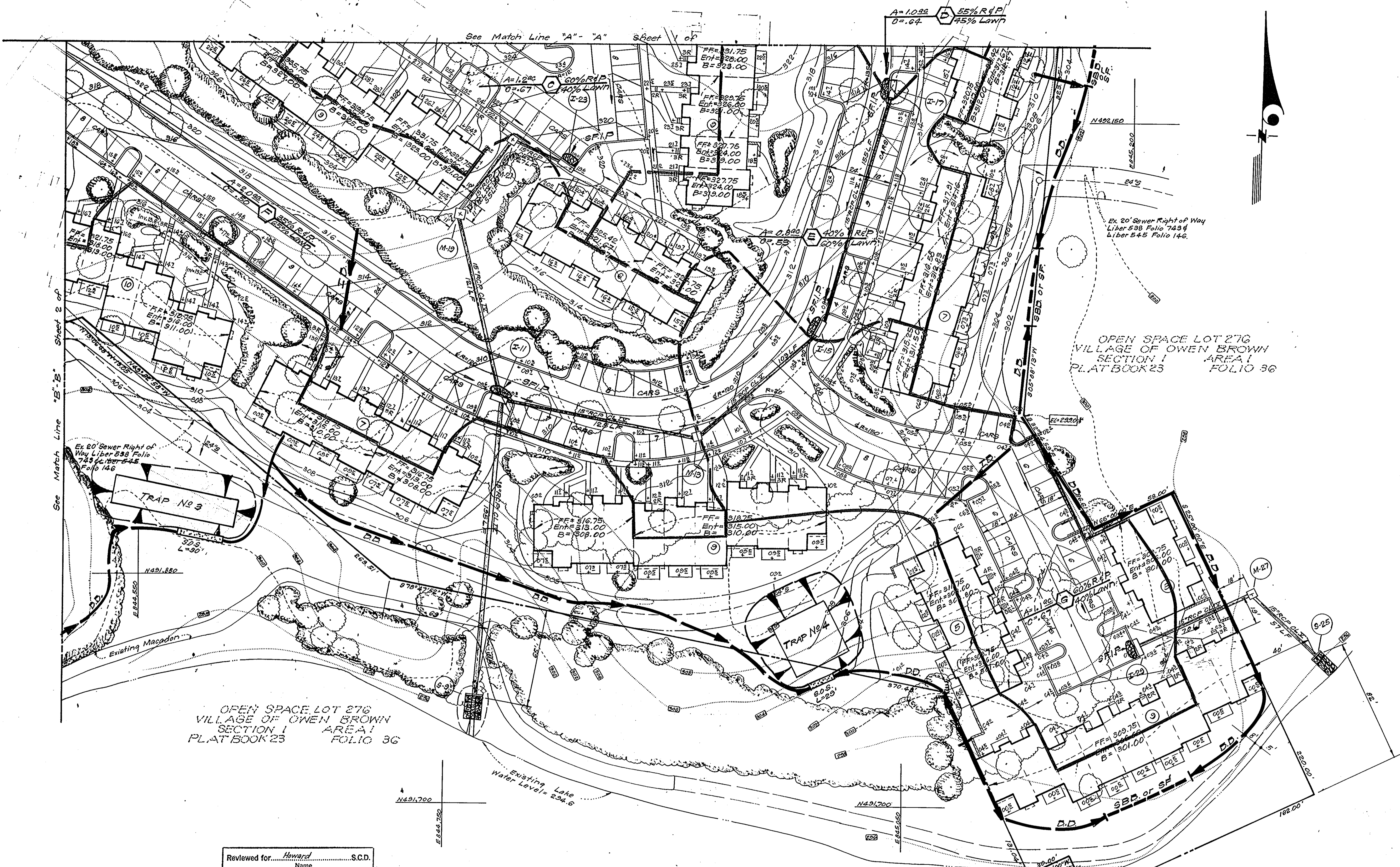
APPROVED FOR PUBLIC WATER AND PUBLIC SEWERAGE SYSTEMS,
HOWARD COUNTY HEALTH DEPARTMENT
Joseph Borjas 10-31-78
COUNTY HEALTH OFFICER DATE

APPROVED: HOWARD COUNTY OFFICE OF PLANNING & ZONING
John W. Musselman 11-1-78
PLANNING DIRECTOR DATE
CHIEF DIVISION OF LAND DEVELOPMENT

APPROVED FOR PUBLIC WATER AND PUBLIC SEWERAGE,
STORM DRAINAGE SYSTEMS AND PUBLIC ROADS
HOWARD COUNTY DEPARTMENT OF PUBLIC WORKS
Richard E. Freudenberger 10/26/78
DIRECTOR DATE
W. J. [Signature] 10-26-78
CHIEF BUREAU OF ENGINEERING DATE

Existing Lake
Water Level = 294.6
OPEN SPACE LOT 276
VILLAGE OF OWEN BROWN
SECTION I AREA 1
PLAT BOOK 23 FOLIOS 34, 35 & 36.

CLARK • FINEFROCK & SACKETT ENGINEERS • PLANNERS • SURVEYORS 11315 LOCKWOOD DRIVE SILVER SPRING, MARYLAND 20904 (301) 593-3400		
DESIGNED D.A.B. W.R.M.E.	SITE DEVELOPMENT PLAN SEDIMENT & EROSION CONTROL PLAN & DRAINAGE AREA MAP PARCEL E-1 COLUMBIA VILLAGE OF OWEN BROWN SECTION I AREA 2 6TH ELECTION DISTRICT HOWARD COUNTY, MARYLAND	SCALE 1" = 30'
DRAWN K.I.W.		DRAWING G of 11
CHECKED D.A.B. W.R.M.E.		JOB NO.
DATE July 1978	FOR: M.P. of Md., Inc. P.O. Box 201 Columbia, Md 21045	FILE NO. 1356-X



APPROVED FOR PUBLIC WATER AND PUBLIC SEWERAGE SYSTEMS,
HOWARD COUNTY HEALTH DEPARTMENT
James B. Jones 10-31-78
COUNTY HEALTH OFFICER DATE

APPROVED: HOWARD COUNTY OFFICE OF PLANNING & ZONING
Arthur W. Mueselmann 11-1-78
PLANNING DIRECTOR DATE
CHIEF DIVISION OF LAND DEVELOPMENT

APPROVED: FOR PUBLIC WATER AND PUBLIC SEWERAGE,
STORM DRAINAGE SYSTEMS AND PUBLIC ROADS
HOWARD COUNTY DEPARTMENT OF PUBLIC WORKS
Richard E. Freudenberger 10/26/78
DIRECTOR DATE
CHIEF BUREAU OF ENGINEERING

Reviewed for... *Howard* S.C.D.
Name
and meets Technical Requirements
R. W. ... 12-29-78
Signature Date
U.S. Soil Conservation Service

THIS DEVELOPMENT PLAN IS APPROVED
FOR SOIL EROSION AND SEDIMENT
CONTROL BY THE HOWARD SOIL
CONSERVATION DISTRICT.

DEVELOPER'S CERTIFICATE
I certify that all development and/or construction
will be done according to this plan of development
and plan for Erosion and Sediment Control, and I also
authorize periodic on-site inspection by the Howard
Soil Conservation District or their authorized agents
as are deemed necessary. Deviation from this plan
will not be made unless authorized by the Howard
Soil Conservation District.

ENGINEER'S CERTIFICATE
I hereby certify that this plan for Erosion and
Sediment Control represents a practical and workable
plan based on my personal knowledge of the site
conditions and that it was prepared in accordance
with the requirements of the Howard Soil Conserva-
tion District.

Robert V. Zulmay 12/29/78
Approved Date

Philip H. Stevens 7-13-78
Signature Date
Philip H. Stevens

G. Nelson Clark 7-12-78
Signature Date
G. Nelson Clark



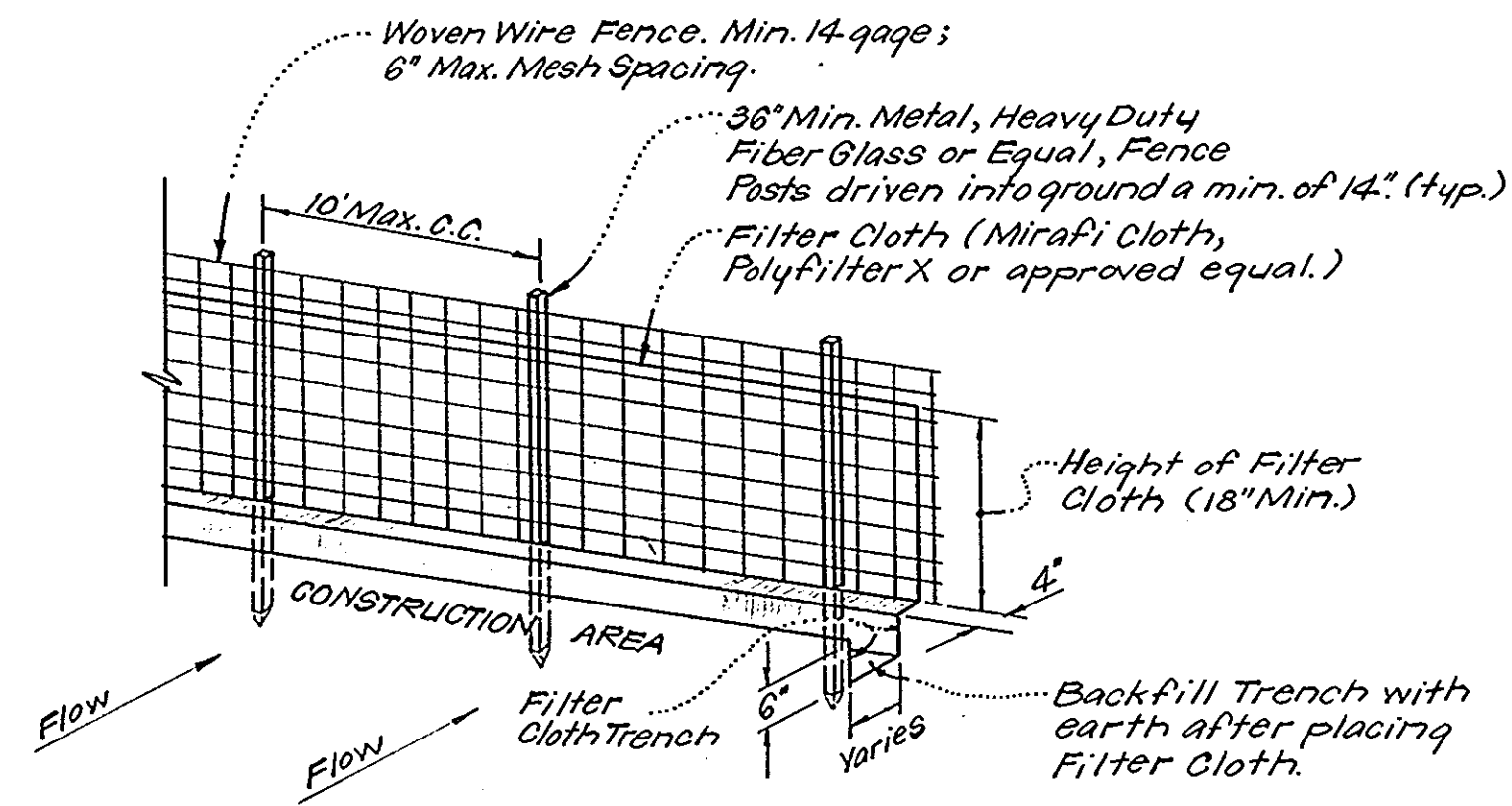
G. Nelson Clark
7-12-78

APPROVED
PLANNING BOARD
OF HOWARD COUNTY
DATE 8-30-78
JAM

CLARK • FINEPROCK & SACKETT ENGINEERS • PLANNERS • SURVEYORS 11315 LOCKWOOD DRIVE SILVER SPRING, MARYLAND 20904 (301) 593-3400		SCALE 1"=30' DRAWING 7 of 11 JOB NO.
DESIGNED D.A.B. W.R.M.G. DRAWN K.I.W. CHECKED D.A.B. W.R.M.G. DATE July, 1978	SITE DEVELOPMENT PLAN SEDIMENT & EROSION CONTROL PLAN DRAINAGE AREA MAP PARCEL E-1 COLUMBIA VILLAGE OF OWEN BROWN SECTION 1 AREA 2 8TH ELECTION DISTRICT HOWARD COUNTY, MARYLAND FOR: M.F. of Md., INC. P.O. Box 291 Columbia, Md. 21045	FILE NO. 1356-X

GENERAL NOTES

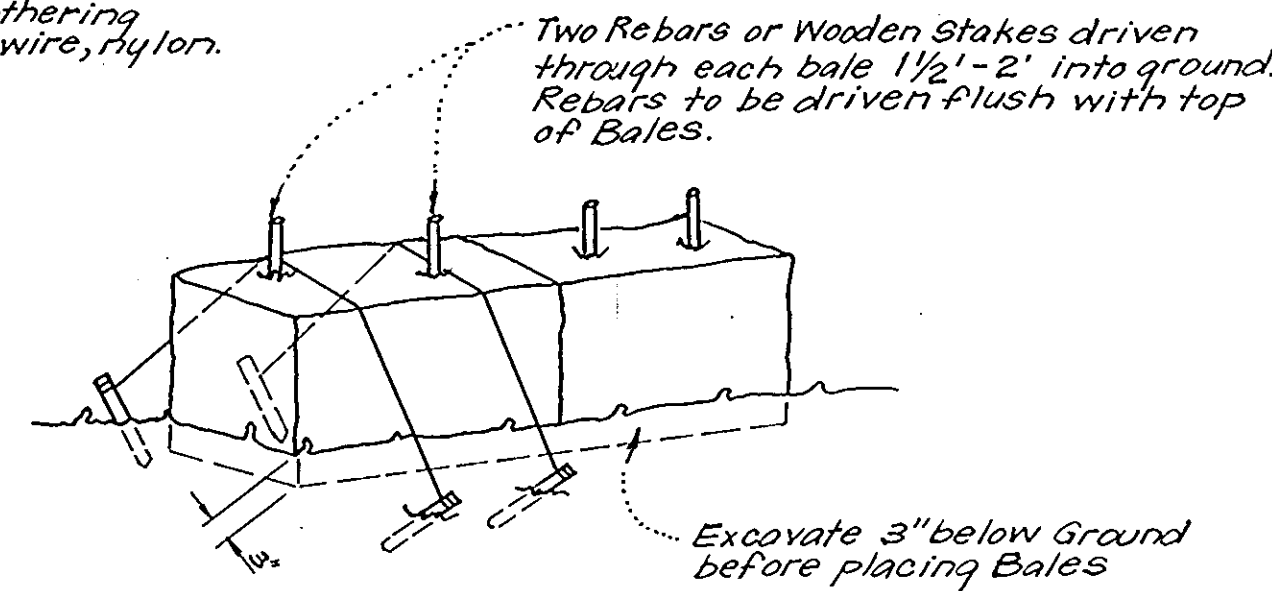
- All Sediment and Erosion Control Measures will be installed and stabilized according to this plan prior to any other grading, clearing or disturbance of the existing surface of the site. See Note #5 for stabilization except that the seed mixture will be annual rye applied at a rate of 1.4 lbs/1000 sq. ft.
- Notify the Bureau of Inspections and Permits at least 24 hours before starting any work.
- All Sediment Control Practices to conform to the "Standards and Specifications for Soil Erosion and Sediment Control in Developing Areas" and shall be adjusted to meet actual field conditions.
- Stabilization of Disturbed Ground to be done as soon after construction as possible.
- All Grading shall be treated in accordance with the following Specifications:
 - Seed - certified 85% germination applied at the rate of 3 lbs/1000 sq. ft. mixture - 40% Kentucky Blue, 20% Chewy Fescue, 20% Kentucky 31, and 20% annual rye.
 - Fertilizer - 10-10-10 applied at the rate of 23 lbs/1000 sq. ft. Ground Agricultural Lime or Dolomitic Lime applied at the rate of 46 lbs/1000 sq. ft.
 - Mulch - Weed free grain straw applied at the rate of 70 lbs/1000 sq. ft. Mulch shall be secured to the ground by any approved method i.e. asphalt tacks, chemical binder, wood chips, etc.
- All Structural Sediment Control Measures are to remain in place until permission for their removal has been obtained from the Bureau of Inspections and Permits.
- On Site Inspection and Maintenance of all Sediment Control Measures including clean out of sediment traps and dikes, and proper establishment of all planned vegetative measures will be the responsibility of the Developer or his representative on the site, on a continuing day to day basis.
- Protection of stabilized area from sediment runoff shall be provided by the use of an approved Sediment Control Device, i.e. straw bale, diversion dike, etc.
- The Contractor shall keep all public roads free of sediment deposits left from traffic leaving construction site.
- Stabilized Construction Entrances shall be placed at all construction entrances.
- SITE ANALYSIS:**
 - Total Area = 14.646 Acres
 - Area to be Roofed = 2.951 Acres
 - Area to be Paved = 4.368 Acres
 - Area to be Seeded = 5.724 Acres
 - Area Undisturbed = 1.603 Acres
- CONSTRUCTION SEQUENCE:**
 - Install Sediment & Erosion Control Devices and stabilize Diversion Dikes.
 - Excavate for Foundations and Rough Grade.
 - Erect Structures, Drive ways and Side walks.
 - Final Grade and stabilize in accordance with Note #5.
- It will be the developers responsibility to provide additional sediment & erosion control devices to protect stabilized areas during construction.



- NOTES:**
- Woven Wire Fence to be fastened securely to fence posts by use of wire ties.
 - Filter Cloth to be fastened securely to woven wire fence by use of wire ties spaced every 24" x 24".

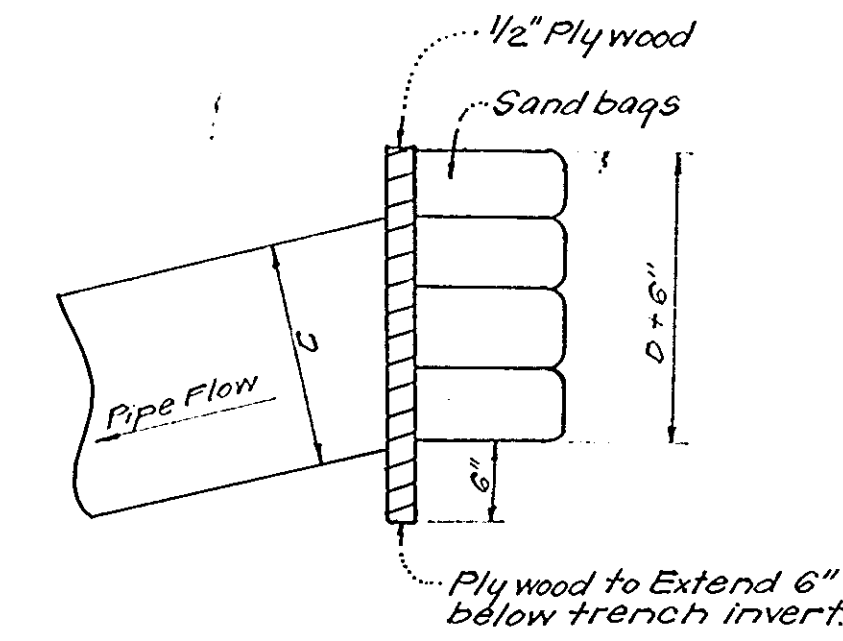
SILT FENCE DETAIL (S.F.)
No Scale

All Bales shall be tied with non-weathering materials, i.e. wire, nylon.

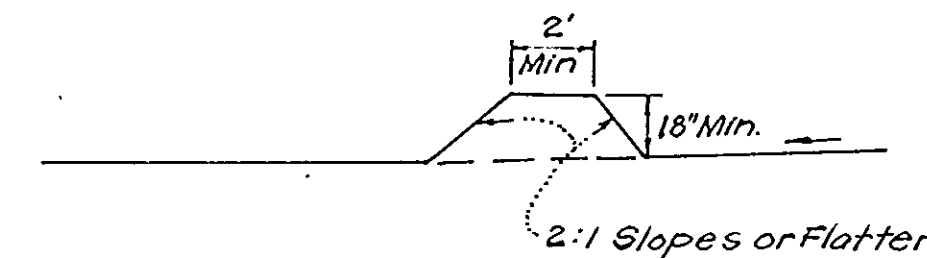


- NOTE:**
- In lieu of the use of rebars each Straw Bale may be fastened to ground with pegs (4 per bale and wire or nylon as shown above).

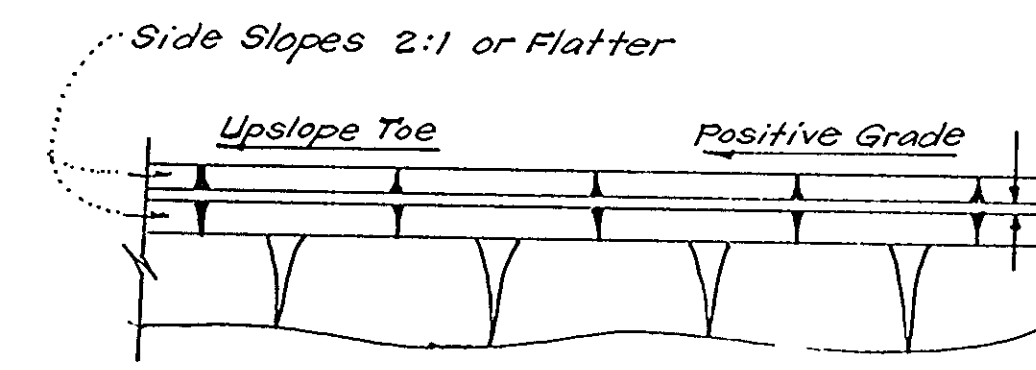
TYPICAL STRAW BALE DETAIL (S.B.D.)
No Scale



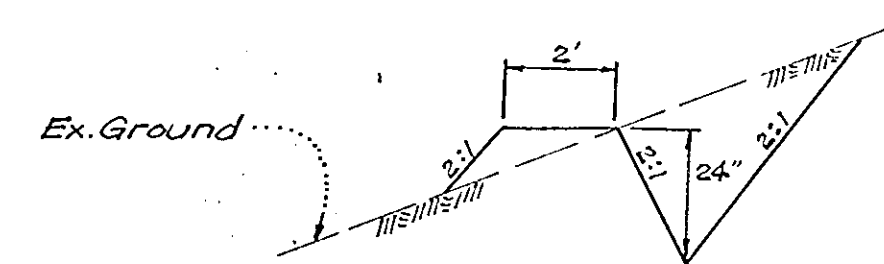
PIPE BLOCKING DETAIL
No Scale



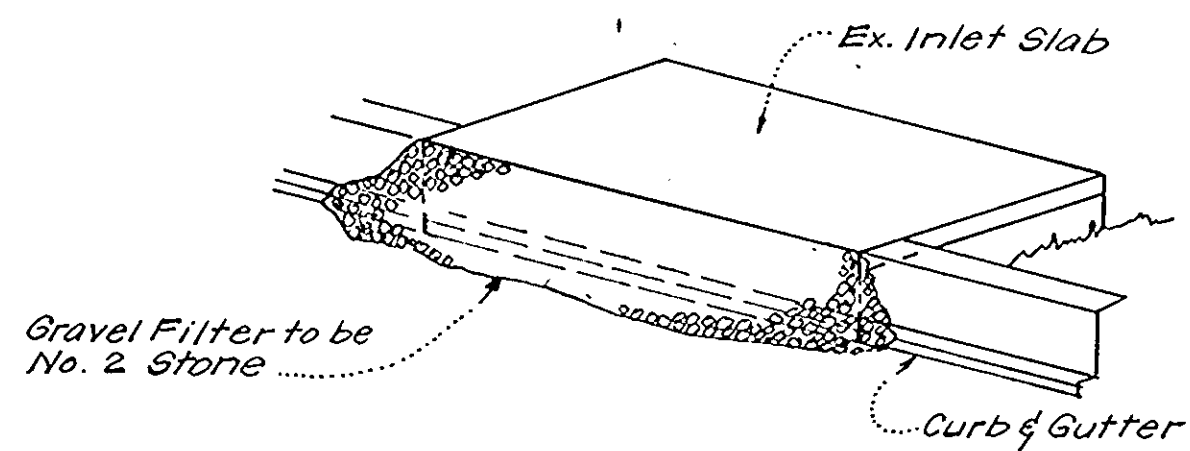
CROSS SECTION



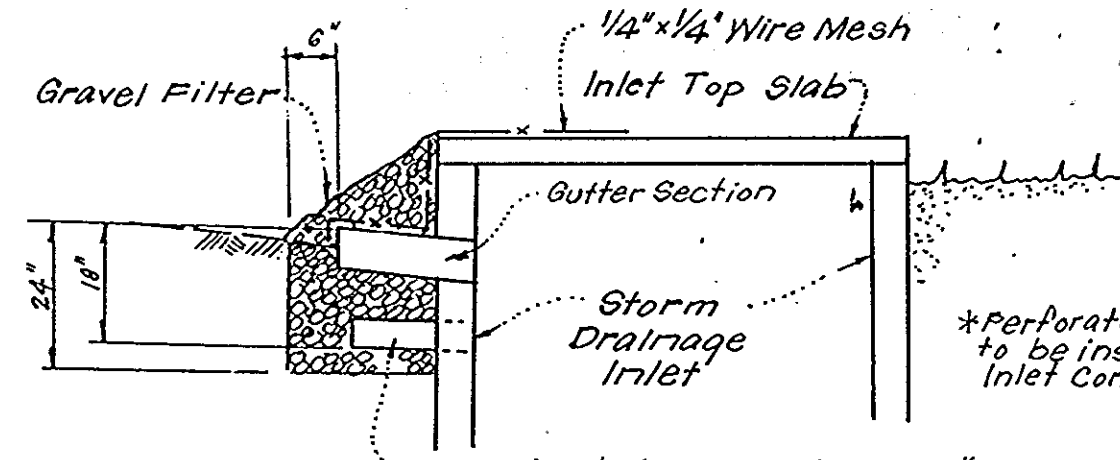
PLAN VIEW
DIVERSION DIKE (D.D.)
No Scale



CUT DIVERSION DIKE
No Scale

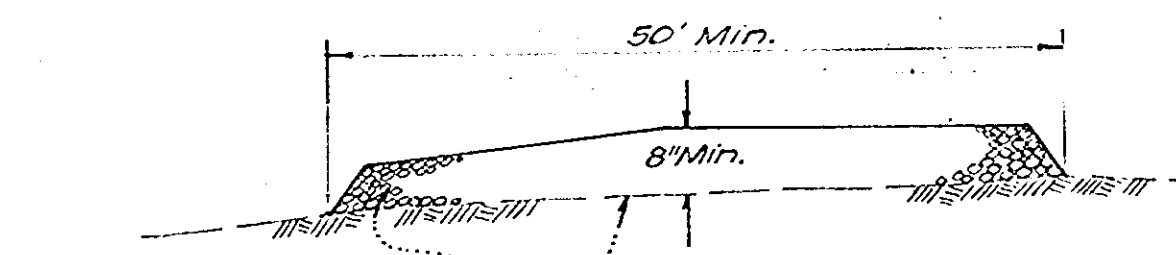


ISOMETRIC VIEW



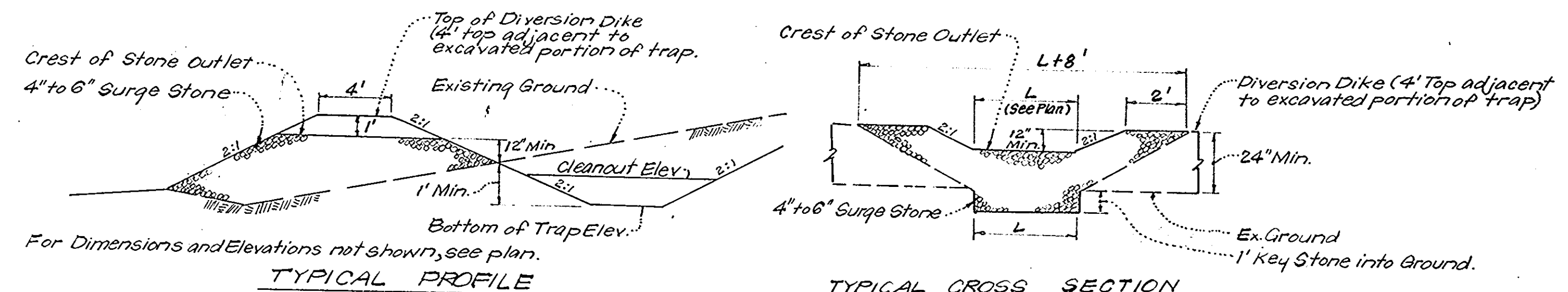
SECTION VIEW

STONE FILTER INLET PROTECTION DETAIL (S.F.I.P.)
No Scale



- M.S.H.A. No. 2 Stone
Ex. or Proposed Ground
NOTE: See Plan View for Limits

SECTION VIEW
STABILIZED CONSTRUCTION ENTRANCE
No Scale



TYPICAL PROFILE
TYPICAL CROSS SECTION
DETAILS OF STONE FILTER OUTLET (FOR STONE OUTLET SEDIMENT TRAP)
No Scale

STONE FILTER OUTLET NOTES:

- Sediment Trap to be cleaned out when sediment reaches a level of 1 ft. below the crest of Stone Outlet.
- Bottom of Sediment Trap to be level and constructed to the dimensions shown on plan.
- Stone Outlet to be constructed through diversion dike adjacent to excavated portion of Sediment Trap.

APPROVED
PLANNING BOARD
OF HOWARD COUNTY
DATE: **6-30-78**

APPROVED FOR PUBLIC WATER AND PUBLIC SEWERAGE SYSTEMS,
HOWARD COUNTY HEALTH DEPARTMENT
James W. Brygman 10-31-78
COUNTY HEALTH OFFICER DATE

APPROVED HOWARD COUNTY OFFICE OF PLANNING & ZONING
John W. Chapman 11-1-78
PLANNING DIRECTOR DATE
CHIEF DIVISION OF LAND DEVELOPMENT

APPROVED FOR PUBLIC WATER AND PUBLIC SEWERAGE,
STORM DRAINAGE SYSTEMS AND PUBLIC ROADS
HOWARD COUNTY DEPARTMENT OF PUBLIC WORKS
Richard E. Freudenberger 10/26/78
DIRECTOR DATE
CHIEF BUREAU OF ENGINEERING

Reviewed for... *Howard* S.C.D. Name
and meets Technical Requirements
C. Wayne Remy 10-20-78 Date
U.S. Soil Conservation Service

THIS DEVELOPMENT PLAN IS APPROVED
FOR SOIL EROSION AND SEDIMENT
CONTROL BY THE HOWARD SOIL
CONSERVATION DISTRICT.

Robert W. Furlong Approved Date *10/26/78*

DEVELOPER'S CERTIFICATE

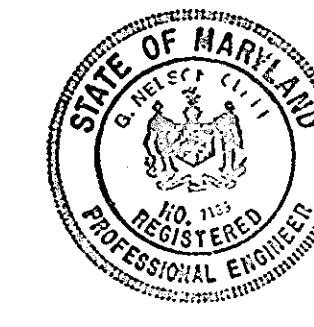
I certify that all development and/or construction will be done according to this plan of development and plan for Erosion and Sediment Control, and I authorize periodic on-site inspection by the Howard Soil Conservation District or their authorized agents as are deemed necessary. Deviation from this plan will not be made unless authorized by the Howard Soil Conservation District.

Philip H. Stevens Signature Date *7-13-78*

ENGINEER'S CERTIFICATE

I hereby certify that this plan for Erosion and Sediment Control represents a practical and workable plan based on my personal knowledge of the site conditions and that it was prepared in accordance with the requirements of the Howard Soil Conservation District.

G. Nelson Clark Signature Date *7-12-78*



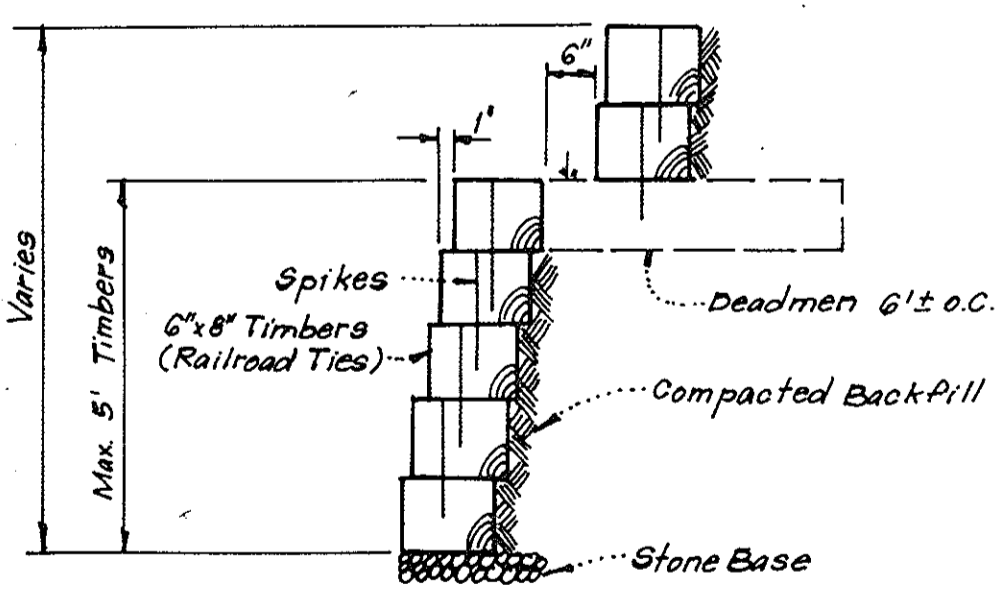
CLARK • FINEFROCK & SACKETT
ENGINEERS • PLANNERS • SURVEYORS
11315 LOCKWOOD DRIVE SILVER SPRING, MARYLAND 20904 (301) 593-3400

DESIGNED: *J.L.S.* SCALE: As Shown
DRAWN: *K.I.W.* DRAWING: 8 of 11
CHECKED: *D.A.B.* JOB NO.:
DATE: July, 1978 FILE NO.: 1356-X

SITE DEVELOPMENT PLAN
SEDIMENT & EROSION CONTROL DETAILS
PARCEL E-1
COLUMBIA
VILLAGE OF OWEN BROWN
SECTION 1 AREA 2
8th ELECTION DISTRICT
HOWARD COUNTY, MARYLAND
FOR: M.P. of Md., Inc.
P.O. Box 29
Columbia, Maryland



OPEN SPACE LOT 276
VILLAGE OF OWEN BROWN
SECTION 1 AREA 1
PLAT BOOK 23 FOLIOS 34,35,36



TIMBER RETAINING WALL
No Scale

APPROVED FOR PUBLIC WATER AND PUBLIC SEWERAGE SYSTEMS,
HOWARD COUNTY HEALTH DEPARTMENT
Joseph P. ... 10-31-78
COUNTY HEALTH OFFICER DATE

APPROVED: HOWARD COUNTY OFFICE OF PLANNING & ZONING
Thomas K. ... 11-1-78
PLANNING DIRECTOR DATE

APPROVED FOR PUBLIC WATER AND PUBLIC SEWERAGE,
STORM DRAINAGE SYSTEMS AND PUBLIC ROADS
HOWARD COUNTY DEPARTMENT OF PUBLIC WORKS
Richard E. ... 10/26/78
DIRECTOR DATE

... 10-26-78
CHIEF BUREAU OF ENGINEERING DATE



Existing Lake
Water Level = 224.6

OPEN SPACE LOT 276
VILLAGE OF OWEN BROWN
SECTION 1 AREA 1
PLAT BOOK 23 FOLIOS 34,35,36



London B. Sackett
Landscape Architect

DATE	REVISIONS	BY
10/1/78	ADD WALKWAY & WALL AT Bldg 1	SMB

PLANT SCHEDULE

KEY	PLANT NAME	SIZE	QUANT	REMARKS
⊕	ACER RUBRUM 'OCTOBER GLORY' OCTOBER GLORY MAPLE #2116	2 1/2"-3" CAL. 12-14' HT.	68	B&B #2116 HEAVY HEAD
⊖	QUERCUS RUBRA RED OAK	2 1/2"-3" CAL. 12-14' HT.	34	B&B HEAVY HEAD
⊖	QUERCUS PALMSTRIS PIN OAK	2 1/2"-3" CAL. 12-14' HT.	52	" " "
⊗	LIQUIDAMBAR STYRACIFLUA SWEETGUM	2 1/2"-3" CAL. 12-14' HT.	11	" " "
⊕	NYSSA SYLVATICA BLACK GUM	2 1/2"-3" CAL. 12-14' HT.	19	" " "
⊕	PIRUS CALLERIANA 'BRADFORD' BRADFORD PEAR	2-2 1/2" CAL. 8-10' HT.	14	" " "
⊖	CORNUS FLORIDA WHITE FLOWERING DOGWOOD	2-2 1/2" CAL. 8-10' HT.	25	" " "
⊖	AMELANCHIER CANADENSIS SHAD BLOW CLUMP	2-2 1/2" CAL. 8-10' HT.	21	" " "
⊗	PRUNUS CERACIFOLIA THUNDERCLOUD PURPLE LEAF PLUM	2-2 1/2" CAL. 8-10' HT.	4	" " "
⊕	MALUS PINK PERFECTION PINK PERFECTION CRABAPPLE	2-2 1/2" CAL. 8-10' HT.	30	" " "
⊕	MALUS DOLGO DOLGO CRABAPPLE	2-2 1/2" CAL. 8-10' HT.	10	" " "
⊙	PINUS STROBUS EASTERN WHITE PINE	6-8' HT.	50	" " "
⊙	PINUS STROBUS EASTERN WHITE PINE	8-10' HT.	53	" " "
A	VIBURNUM PENTADUM ARROWWOOD VIBURNUM	3-4' HT.	12	B&B HEAVY
B	EUDONYMUS ALATUS COMPACTUS COMPACT WINGED EUDONYMUS	2-2 1/2' HT.	16	" " "
C	COTONEASTER SALICIFOLIA WILLOWLEAF COTONEASTER	2-3' HT.	34	" " "
D	PYRACANTHA LOYBOY LOYBOY PYRACANTHA	18-24' SP.	85	" " "
E	MISCANTHUS SINENSIS GRACILLIMUS POTTED CLUMPS	POTTED CLUMPS	49	CANS HEAVY
F	VIBURNUM RHYTIDOPHYLLUM LEATHER LEAF VIBURNUM	3-4' HT.	71	B&B HEAVY

APPROVED
PLANNING BOARD
OF HOWARD COUNTY
DATE 8-30-78
...

NOTE: ALL PLANT MATERIAL AND PLANTING PROCEDURES SHALL BE IN COMPLIANCE WITH THE STANDARD HRD COLUMBIA PLANTING SPECIFICATIONS.
CONTRACTOR SHALL VERIFY LOCATION OF UNDERGROUND UTILITIES.
SUBSTITUTIONS MUST BE APPROVED BY THE LANDSCAPE ARCHITECT

CLARK • FINEFROCK & SACKETT
ENGINEERS • PLANNERS • SURVEYORS
11315 LOCKWOOD DRIVE SILVER SPRING, MARYLAND 20904 (301) 593-3400

LANDSCAPE PLANTING PLAN

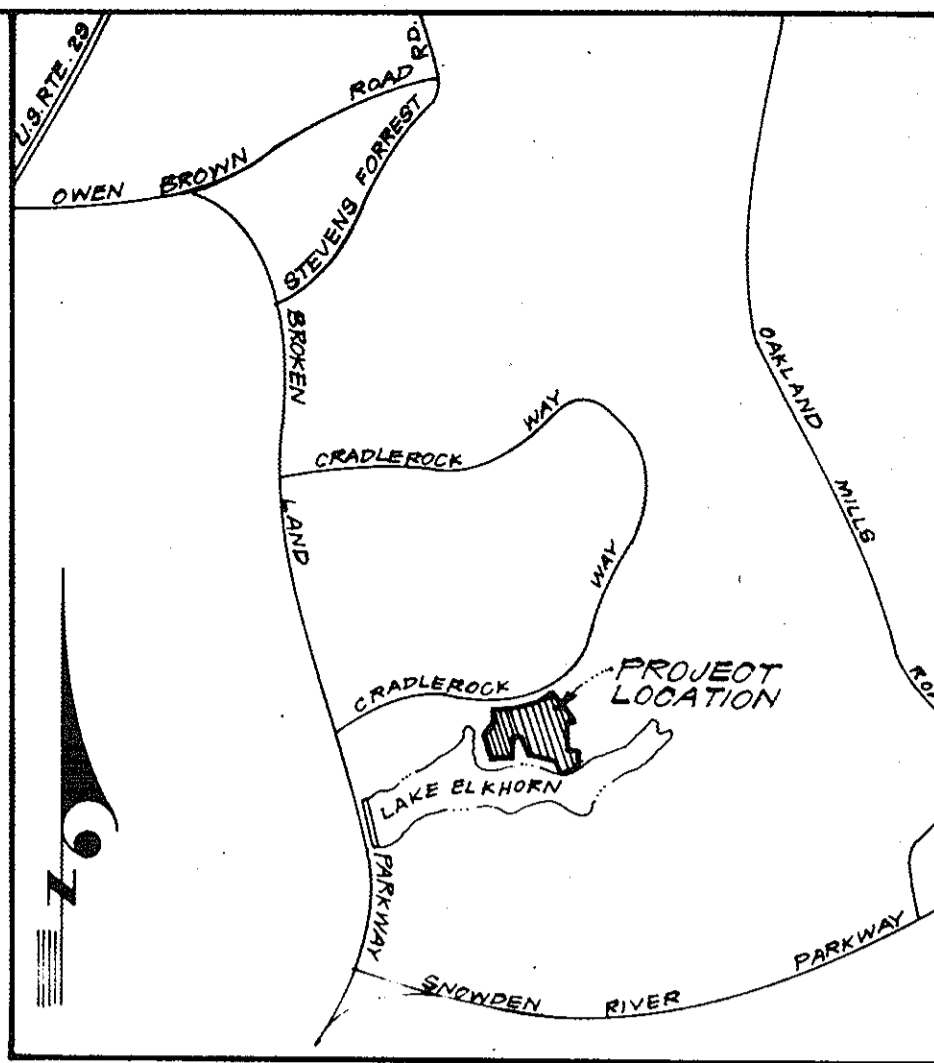
DESIGNED: WHT
DRAWN: WHT
CHECKED: WHT.

SCALE: 1"=30'
DRAWING: 90211
JOB NO.:
FILE NO.: 1356-X

PARCEL E-1
COLUMBIA
VILLAGE OF OWEN BROWN
SECTION 1 AREA-2
6TH ELECTION DISTRICT
HOWARD COUNTY, MARYLAND

FOR: M.P. OF MD. INC.
P.O. BOX 291
COLUMBIA, MD 21045

DATE: OCT. 1978



VICINITY MAP
SCALE: 1"=2000

GENERAL NOTES

10 of 10

APPROVED
PLANNING BOARD
OF HOWARD COUNTY
DATE 8-30-78
[Signature]

APPROVED FOR PUBLIC WATER AND PUBLIC SEWERAGE SYSTEMS,
HOWARD COUNTY HEALTH DEPARTMENT
[Signature] 10-31-78
COUNTY HEALTH OFFICER DATE

APPROVED: HOWARD COUNTY OFFICE OF PLANNING & ZONING
[Signature] 10-1-78
PLANNING DIRECTOR DATE
CHIEF DIVISION OF LAND DEVELOPMENT

APPROVED FOR PUBLIC WATER AND PUBLIC SEWERAGE,
STORM DRAINAGE SYSTEMS AND PUBLIC ROADS
HOWARD COUNTY DEPARTMENT OF PUBLIC WORKS
[Signature] 10/26/78
DIRECTOR DATE
CHIEF BUREAU OF ENGINEERING 10-26-78 DATE

[Signature]
DONALD P. SACKETT

CLARK • FINEFROCK & SACKETT
ENGINEERS • PLANNERS • SURVEYORS
11315 LOCKWOOD DRIVE SILVER SPRING, MARYLAND 20904 (301) 593-3400

DESIGNED WHT. LANDSCAPE PLANTING PLAN PARCEL E-1 SCALE 1"=30'

DRAWN WHT. **COLUMBIA** DRAWING 100f11

CHECKED WHT. VILLAGE OF OWEN BROWN AREA 2 JOB NO.

DATE 10/12/78 REVISIONS BY DATE

10/12/78 ADD WALKWAY & WALL AT ROAD 1 SMTZ

DATE 10/12/78 FOR: M. P. O'P. MD., INC. FILE NO. 1356-X
P.O. Box 28) Columbia, Md 21045

PLANTING GENERAL NOTES

1. ALL PLANT MATERIALS AND PLANTING PROCEDURES, EXCEPT AS OTHERWISE NOTED, SHALL CONFORM TO THE LATEST EDITION OF "LANDSCAPE SPECIFICATION GUIDELINES FOR THE BALTIMORE-WASHINGTON METROPOLITAN AREA" BY LCA-MD'DC'VA FOR ANYTHING THAT IS NOT COVERED BY SPECIFICATIONS FOR THIS PROJECT.
2. USING THE SERVICES OF MISS UTILITY AND A PRIVATE UTILITY LOCATING COMPANY, LOCATE AND MARK ALL UNDERGROUND UTILITIES BEFORE DIGGING. THE CALL TO MISS UTILITY (1-800-257-7777) SHALL BE MADE AT LEAST 48 HOURS BEFORE DIGGING. ALL UNDERGROUND UTILITIES NOT MARKED BY MISS UTILITY SHALL BE MARKED BY THE PRIVATE UTILITY LOCATING COMPANY BEFORE DIGGING.
3. ALL PLANTING BEDS AND PLANT LOCATIONS SHALL BE STAKED OUT BY CONTRACTOR AND APPROVED BY LANDSCAPE ARCHITECT BEFORE DIGGING. IT IS THE CONTRACTOR'S RESPONSIBILITY TO LOCATE AND COORDINATE PLANTINGS WITH ALL EXISTING UTILITIES. IF DISCREPANCIES OCCUR BECAUSE OF UTILITY LOCATIONS OR OTHER EXISTING CONDITIONS, THE CONTRACTOR SHALL NOTIFY THE LANDSCAPE ARCHITECT IMMEDIATELY TO COORDINATE ANY NECESSARY ADJUSTMENTS. THE OWNER RESERVES THE RIGHT TO RELOCATE STAKEOUT LOCATIONS.
4. ALL PLANT MATERIAL SHALL BE LABELED BY THE NURSERY AND DELIVERED WITH LABELS IN PLACE FOR INSPECTION. SUBSTITUTIONS IN PLANT SPECIES OR SIZE SHALL NOT BE PERMITTED EXCEPT WITH THE APPROVAL OF THE LANDSCAPE ARCHITECT. DO NOT PRUNE PLANT MATERIAL EXCEPT DEAD BRANCHES, UNLESS OTHERWISE DIRECTED BY THE OWNER.
5. IN CASE OF DISCREPANCIES BETWEEN QUANTITIES ON THE PLANT LIST AND ON THE PLAN, THE PLAN SHALL GOVERN.
6. ALL PLANTING BEDS SHALL HAVE AT LEAST 12" DEPTH OF PLANTING SOIL MIX. ALL OTHER NON-PAVED AREAS SHALL HAVE AT LEAST 2" OF TOPSOIL AND SHALL BE SODDED.
7. IT IS OF UTMOST IMPORTANCE THAT ALL PLANT MATERIAL BE SET AT OR SLIGHTLY HIGHER IN RELATION TO GRADE THAN IT WAS GROWN IN THE NURSERY AND WITH GOOD EARTH TO ROOT CONTACT. ANY MATERIALS OR WORK MAY BE REJECTED BY THE LANDSCAPE ARCHITECT IF IT DOES NOT MEET THIS OR ANY OTHER REQUIREMENT OF THE SPECIFICATIONS, AND REJECTED MATERIALS SHALL BE REMOVED FROM THE SITE BY THE CONTRACTOR' EXPENSE.
8. ALL SHRUB, GROUND COVER AND PERENNIAL AREAS SHALL BE PLANTED IN CONTINUOUS PREPARED BEDS, MULCHED WITH COMPOSTED HARDWOOD MULCH AS DETAILED AND SPECIFIED. PLANTING BEDS SHALL BE 6" HIGHER THAN ADJACENT LAWN OR PAVEMENT ELEVATION, UNLESS OTHERWISE NOTED OR DOING SO WOULD PREVENT DRAINAGE. PLANTING BEDS SHALL SLOPE @ 2% MINIMUM, AWAY FROM ANY ADJACENT BUILDINGS.
9. THIS PLAN IS FOR LANDSCAPE PURPOSES ONLY. ANY OTHER INFORMATION SHOWN IS FOR REFERENCE ONLY. SEE OTHER DRAWINGS FOR INFORMATION ABOUT ALL LAYOUT, GRADING, DRAINAGE, PAVING, WALLS AND OTHER SITE IMPROVEMENTS.

Qty	Symbol	Botanical Name	Common Name	Scheduled Size
Trees				
2	QR	Quercus rubra	Red Oak	B&B, 2 1/2-3" cal., 12-14' hgt
Shrubs				
27	ITV	Itea virginica 'Little Henry'	Little Henry Virginia Sweetspire	#3, 24-30"
Perennials				
163	CP	Ceratostigma plumbaginoides	Leadwort	1 Qt. Cont.
39	HSE	Hosta sieboldiana 'Elegans'	Elegans Hosta	#1 Cont.
212	HYP	Hypericum calycinum	Aaronsbeard St. Johnswort	#1
185	LIR	Liriope muscari 'Big Blue'	Big Blue Lily Turf	SP2

APPROVED: HOWARD COUNTY DEPARTMENT OF PLANNING & ZONING

Frank D. Gayle Director Date: 10/16/12

V. P. ... Chief, Division of Land Development Date: 10/15/12

... Chief, Development Engineering Division Date: 10/16/12

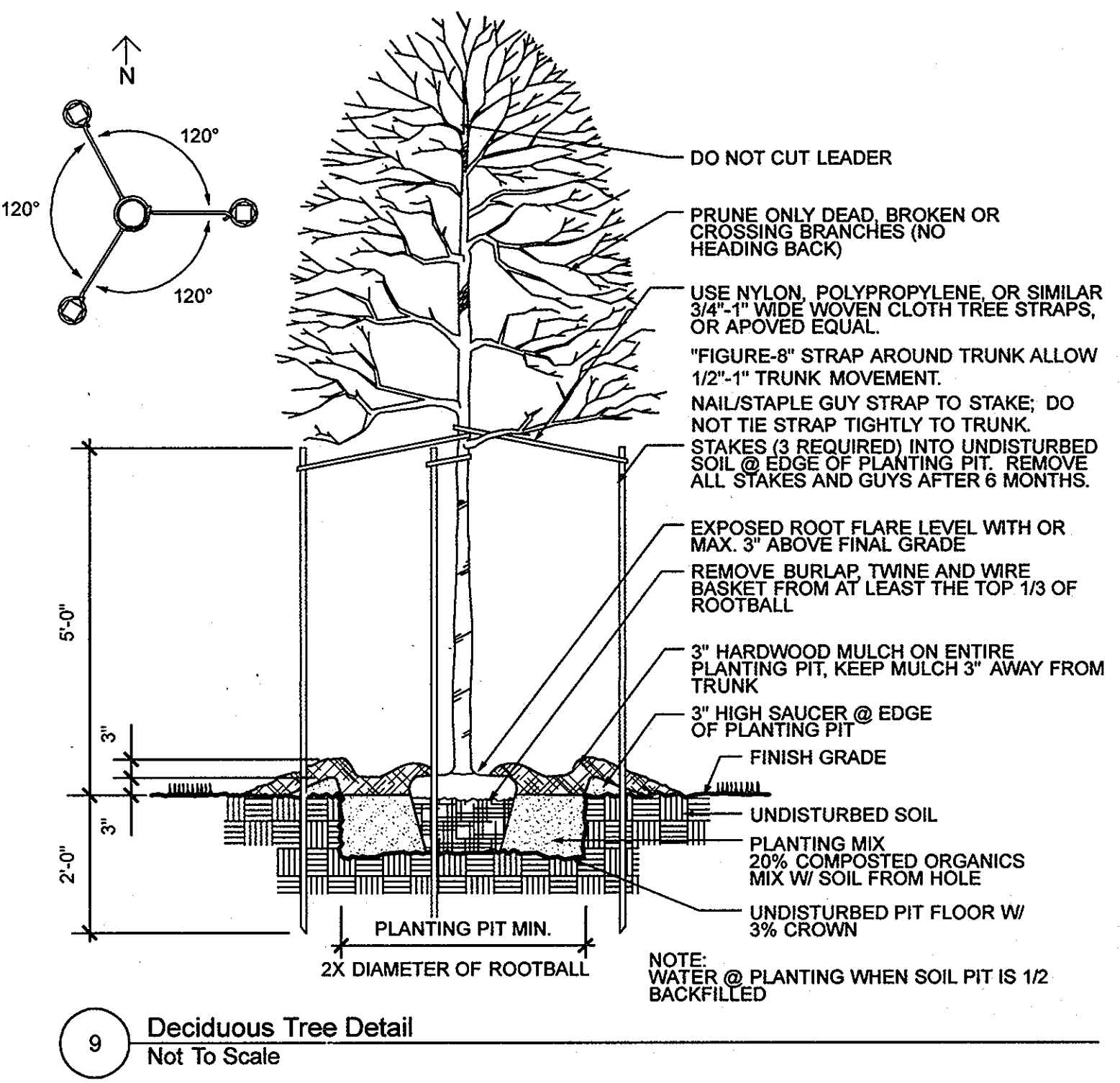
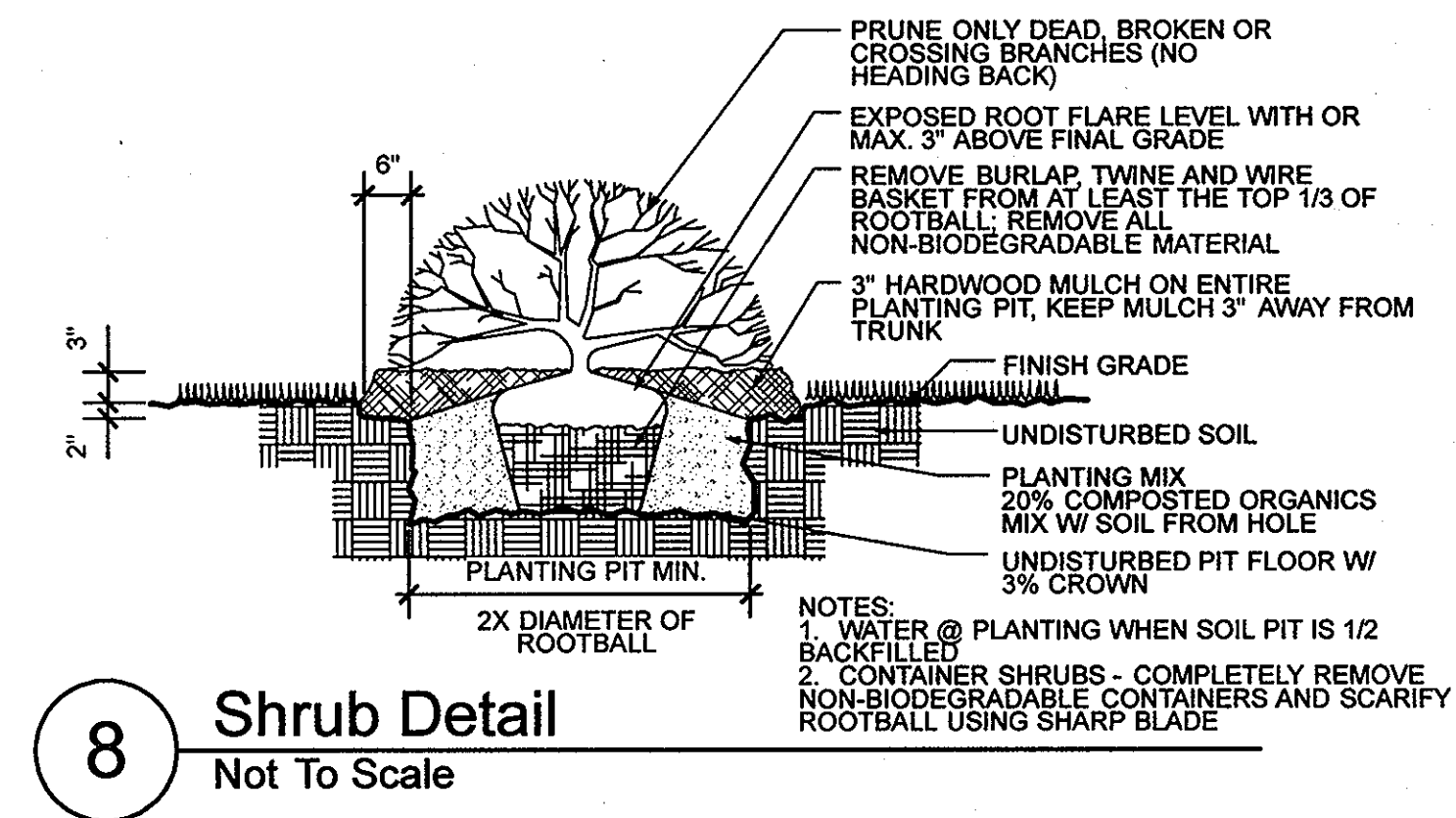
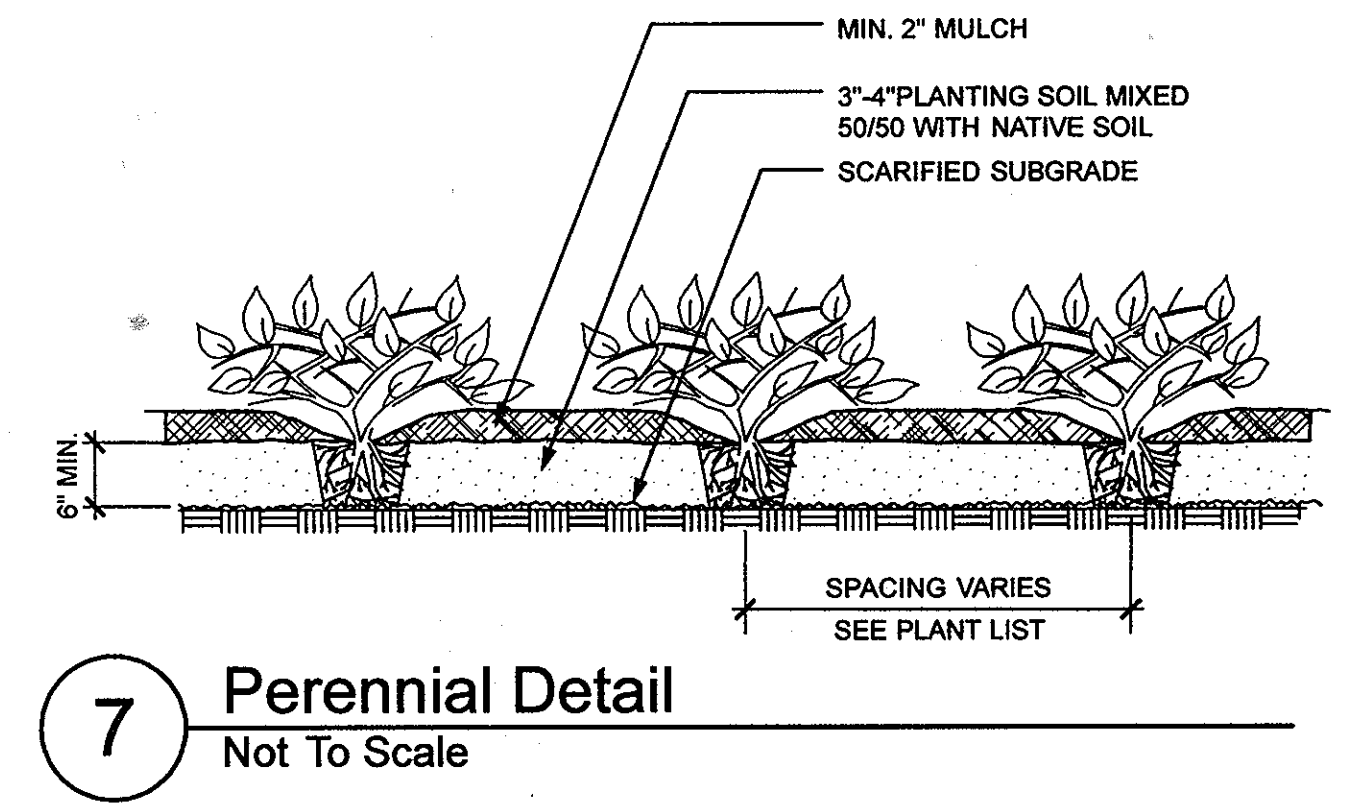
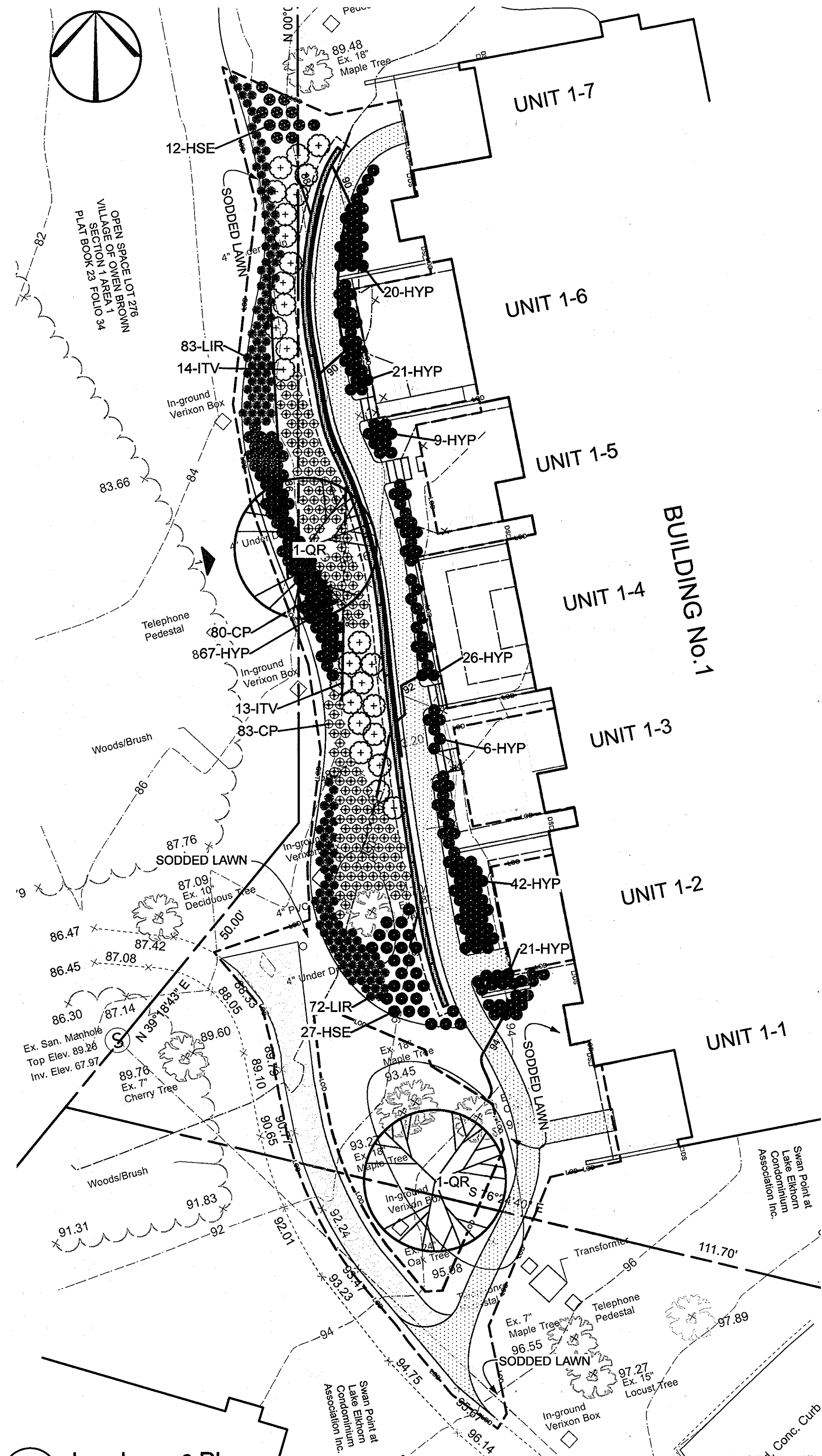
SLATER ASSOCIATES, INC.
 5560 Sterrett Pl. Suite 302
 Columbia, MD 21044
 410.992.0212 - fax
 410.992.0001 - phone
 www.slaterassociates.com
 Landscape Architecture • Site Planning • Garden Design

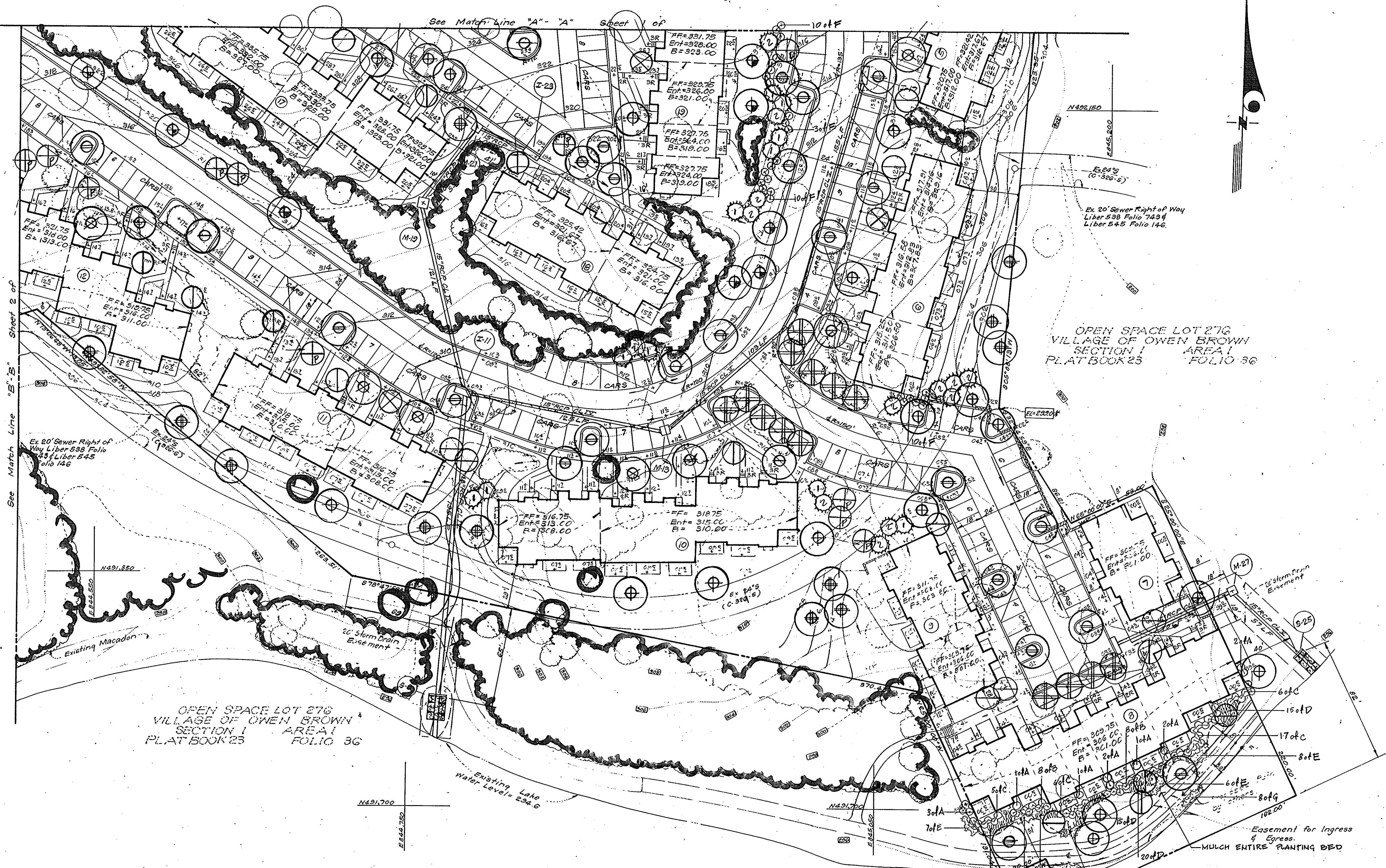
Rev. Date:	Description:	By:	Prepared For:
10/1/12	ADD WALKWAY & WALL BEHIND BLDG. 1 SMZ		Swan Point at Lake Elkhorn Condominium Association, Inc. 7355 Swan Point Way Columbia, MD 21045 Attn: Kathy Bestany Phone: (410) 381-8988
			Parcel Owner: Swan Point at Lake Elkhorn Condominium Association, Inc. Swan Point Way Columbia, MD 21045

Project Name: REVISED SITE DEVELOPMENT PLAN
 PARCEL E-1
COLUMBIA
 VILLAGE OF OWEN BROWN
 ELECTION DISTRICT NO. 6 SECTION-1 AREA-2
 HOWARD COUNTY, MARYLAND

Date: 10/1/12
 Drawn By: SZ
 Approved By: JS
 Scale: AS NOTED
 Designed By: SZ
 Project No:
 Tax Map-Grid: 36-15
 Zoning: NT

Sheet Title: Landscape Plan
 Sheet Number: SHEET 10 OF 11
10A
 SDP-79-08c





OPEN SPACE LOT 276
VILLAGE OF OWEN BROWN
SECTION 1 AREA 1
PLAT BOOK 23 FOLIO 36

OPEN SPACE LOT 276
VILLAGE OF OWEN BROWN
SECTION 1 AREA 1
PLAT BOOK 23 FOLIO 36

APPROVED
PLANNING BOARD
OF HOWARD COUNTY
DATE 8-30-78

CLARK • FINEFROCK & SACKETT ENGINEERS • PLANNERS • SURVEYORS 11315 LOCKWOOD DRIVE SILVER SPRING MARYLAND 20904 (301) 593 3400		
DESIGNED WHT	LANDSCAPE PLANTING PLAN PARCEL E-1 COLUMBIA VILLAGE OF OWEN BROWN SECTION 1 AREA 2 GHD ELECTION DISTRICT HOWARD COUNTY, MARYLAND FOR: M.P. of Md, INC. P.O. Box 291 Columbia, Md 21045	SCALE 1"=30'
DRAWN WHT		DRAWING 11 of 11
CHECKED WHT		JOB NO.
DATE Oct. 1978		FILE NO. 1356-X

Donald P. Sackett
 STATE OF MARYLAND
 PROFESSIONAL SURVEYOR
 No. 12345

APPROVED FOR PUBLIC WATER AND PUBLIC SEWERAGE SYSTEMS, HOWARD COUNTY HEALTH DEPARTMENT <i>Joseph Bonfigli</i> CHIEF HEALTH OFFICER 10-31-78	
APPROVED HOWARD COUNTY OFFICE OF PLANNING & ZONING <i>Joseph W. Marshall</i> PLANNING DIRECTOR 11-1-78	
APPROVED FOR PUBLIC WATER AND PUBLIC SEWERAGE, STORM DRAINAGE SYSTEMS AND PUBLIC ROADS HOWARD COUNTY DEPARTMENT OF PUBLIC WORKS <i>Richard E. Freudenberger</i> DIRECTOR 10/26/78	
<i>W. O. [Signature]</i> CHIEF BUREAU OF ENGINEERING 10/26/78	