

OUTLINED AREA NOT INCLUDED IN THIS SUBMISSION

GENERAL NOTES

- TAX MAP NO. 30
- TOTAL AREA: 1.00 ACRES
- PUBLIC WATER AND SEWER ARE UTILIZED.
- ALL COORDINATES ARE BASED ON MARYLAND STATE GRID SYSTEM. ELEVATIONS ARE BASED ON THE U.S. COAST AND GEODETIC SURVEY MEAN SEA LEVEL DATUM 1929.
- ALL DRIVEWAYS TO BE BUILT AS PER HOWARD CO. ROAD CONSTRUCTION CODE DRAWING D-34 PAGE 99.
- FOR BEARINGS AND DISTANCES OF INDIVIDUAL LOT LINES SEE RECORD PLAT RECORDED AS PLAT #3573.
- DECLARATION OF EASEMENT FOR LOT 33 AND 34 RECORDED ON SEPTEMBER 29, 1977, CMP #47, PAGE 390.

SITE ANALYSIS

- ZONING - R-17
- NUMBER OF LOTS SHOWN: 3
- AREA INCLUDED IN THIS SUBMISSION: 1.00 ACRES

Reviewed for Howard County S.C.S. and meets Technical Requirements.
C. Wayne Gray Date: 6-5-78
 U.S. Soil Conservation Service

This Development Plan is Approved for Soil Erosion and Sediment Control By The Howard County Soil Conservation Dist.

Approved: *Les Epp* Date: 6-5-78
 Howard County S.C.D.

APPROVED: For Public Water & Public Sewerage Systems, Howard County Health Department.

Joytha Boyden 6-13-78
 County Health Officer Date

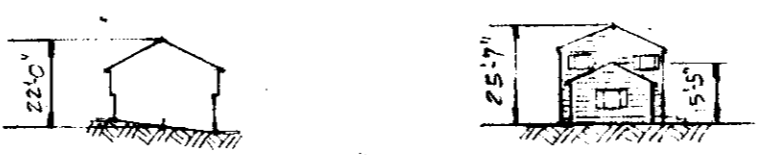
APPROVED: Howard County Officer of Planning & Zoning
Donald L. Hamigh 6-13-78
 Planning Director Date

Paul W. ... 6-13-78
 Chief, Division of Land Development Date

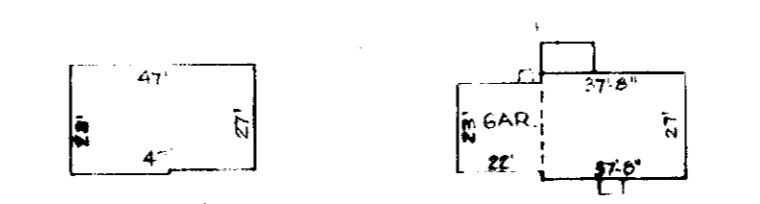
APPROVED: For Public Water, Public Sewerage & Storm Drainage System & Roads
 Howard County Department of Public Works

Richard E. Breidenberg 6/7/78
 Director Date

W.O. ... 6-7-78
 Chief, Bureau of Highways Date

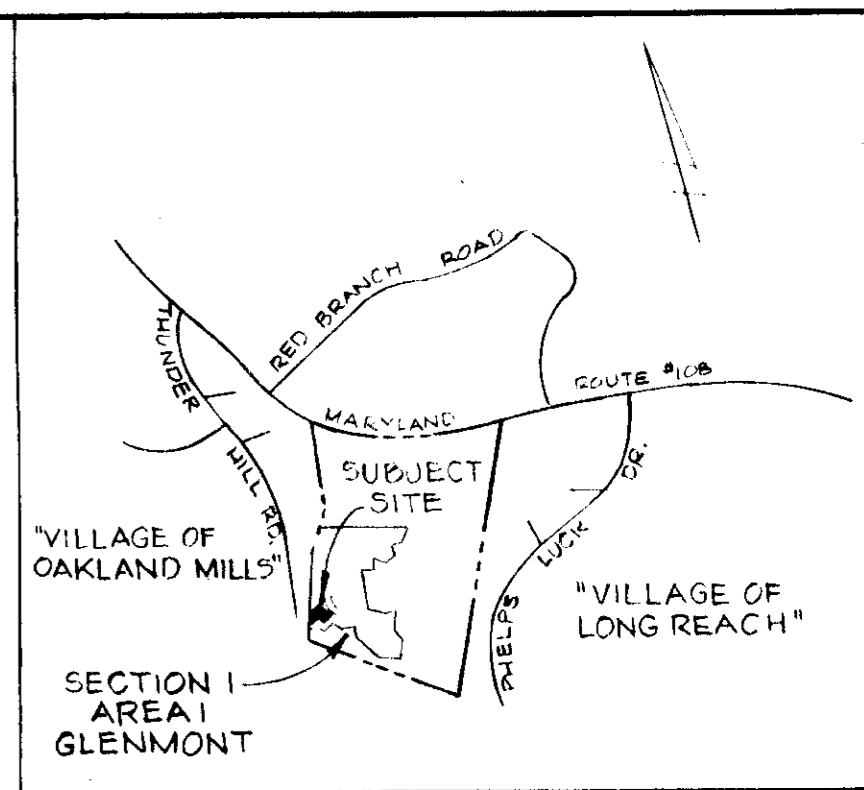
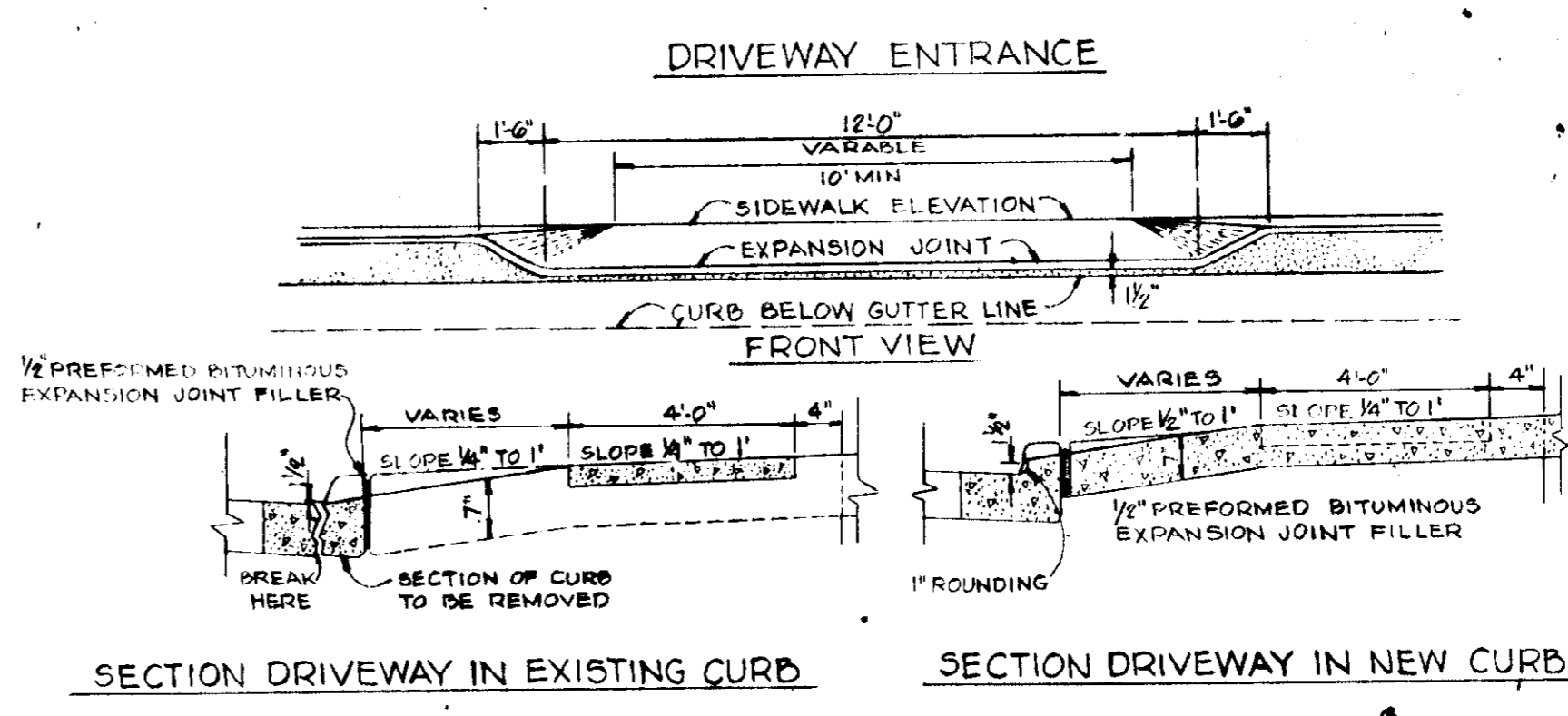


PROFILES



FLOOR PLANS

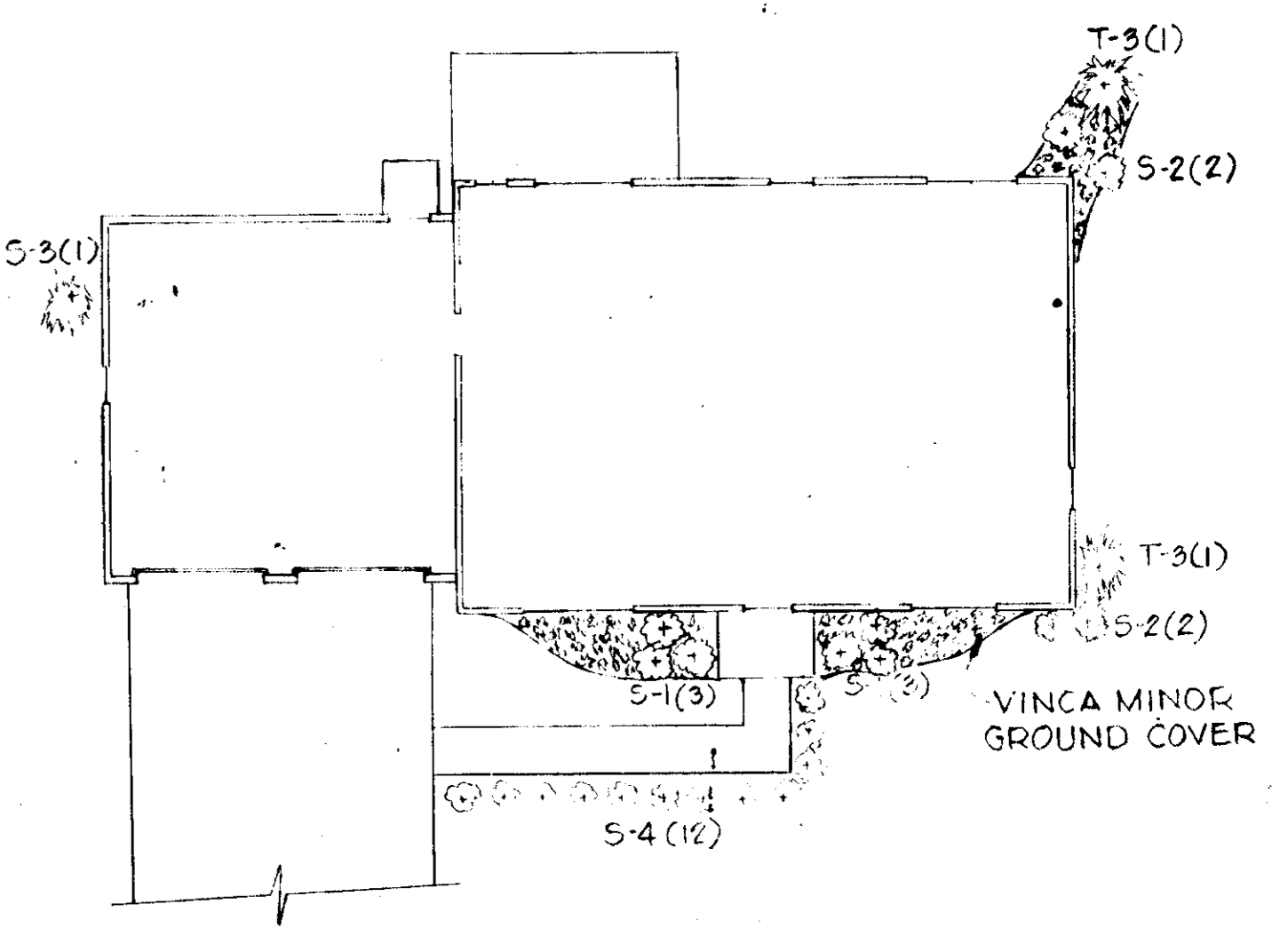
TYPICAL HOUSES
NO SCALE



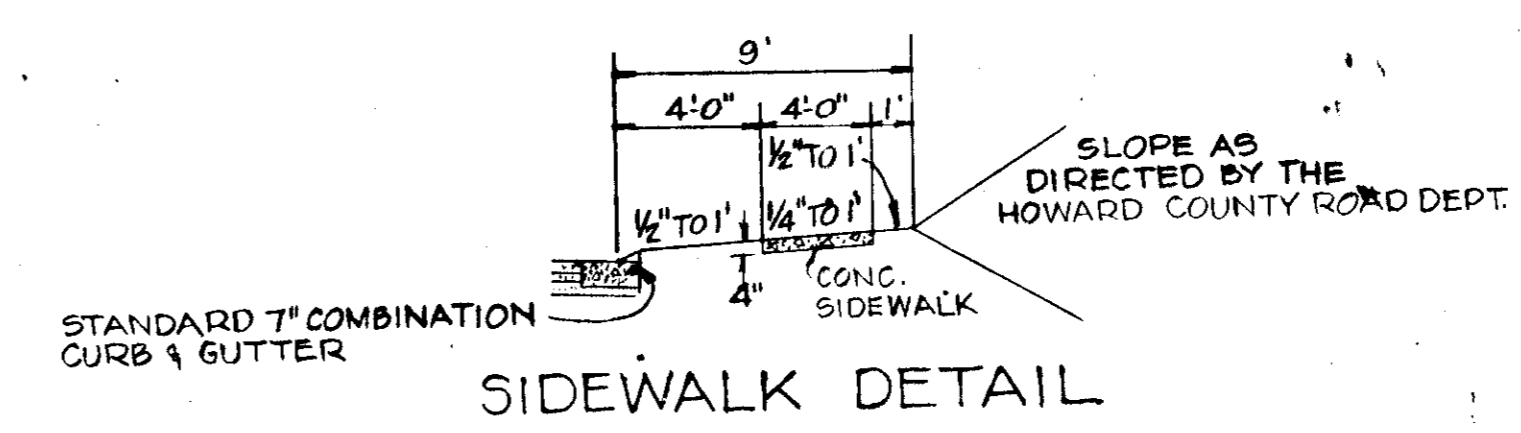
VICINITY MAP
SCALE: 1"=2000'

PLANT SCHEDULE

| | | | |
|-----|--|---------|--------|
| S-1 | ILEX "NELLIE R. STEVENS" | 3' | 0 |
| S-2 | TAXUS DACCATA REPANDENS ENGLISH YEW | 18"-24" | 4 |
| S-3 | PYRACANTHA COCCINEA MONROVIA FIRETHORN | 3'-4' | 1 |
| S-4 | TAXUS CUSPIDATA NANA DWARF JAPANESE YEW | 15"-18" | 12-26% |
| T-3 | PINUS THUNBERGERI | 4'-5' | 2 |



TYPICAL PLANTING PLAN



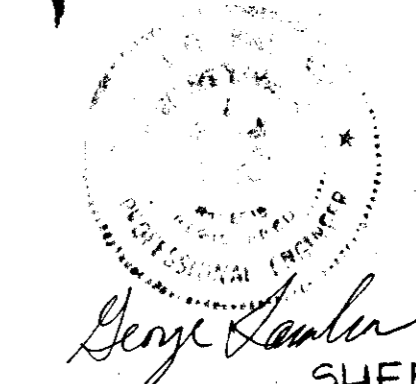
SIDEWALK DETAIL

REVISED
SITE DEVELOPMENT PLAN
 (REVISION TO SDP 78-20)
GLENMONT
 SECTION 1 AREA 1
 LOTS 32, 33, 35 BLOCK "A"

ELECTION DISTRICT GUILFORD NO. 6 HOWARD COUNTY, MD.
 SCALE: 1"=50'
 Apr 27, 1977
 RECORDED AS PLAT #3573 ON DECEMBER 1, 1976
 AMONG THE LAND RECORDS OF HOWARD COUNTY, MD.
 4-21-78 LOT 33A - MODEL CHANGED TO 2 STORY W/GARAGE
 Site plan previously approved as SDP 78-20
 5-26-78 ADDED SIDEWALK ON SITE PLAN, SIDEWALK
 DETAIL AND SIGNATURE BLOCK FOR SOIL
 CONSERVATION SERVICE.

Note: 1. Sediment control measures approved along with SDP 78-20
 2. Revisions to Lot 33 does not reflect any change to previously approved Sediment Control Plan

APPROVED
 DIVISION OF LAND DEVELOPMENT
 HOWARD COUNTY, MARYLAND
 DATE 5-22-78
Paul



OWNERS
 VICENDESE BUILDERS, INC.
 12190 ETCHEISON ROAD
 ELLICOTT CITY, MARYLAND 21043

KIDDE
 KIDDE CONSULTANTS, INC.
 1020 CROMWELL BRIDGE ROAD
 BALTIMORE, MARYLAND 21204

SHEET 1 OF 1
 SDP-78-104

RE. SDP 78-104
 I.O. 1-76052-C 18031-C