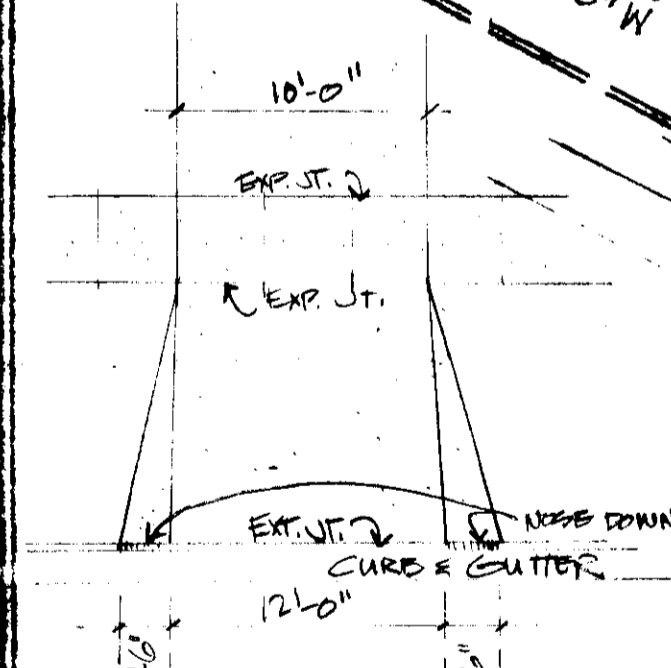


VICINITY MAP 1"=200' 0"

VILLAGE OF OAKLAND MILLS SEC. 1 AREA 4 PART 'A' FB 10 F.I.L.A. OPEN SPACE

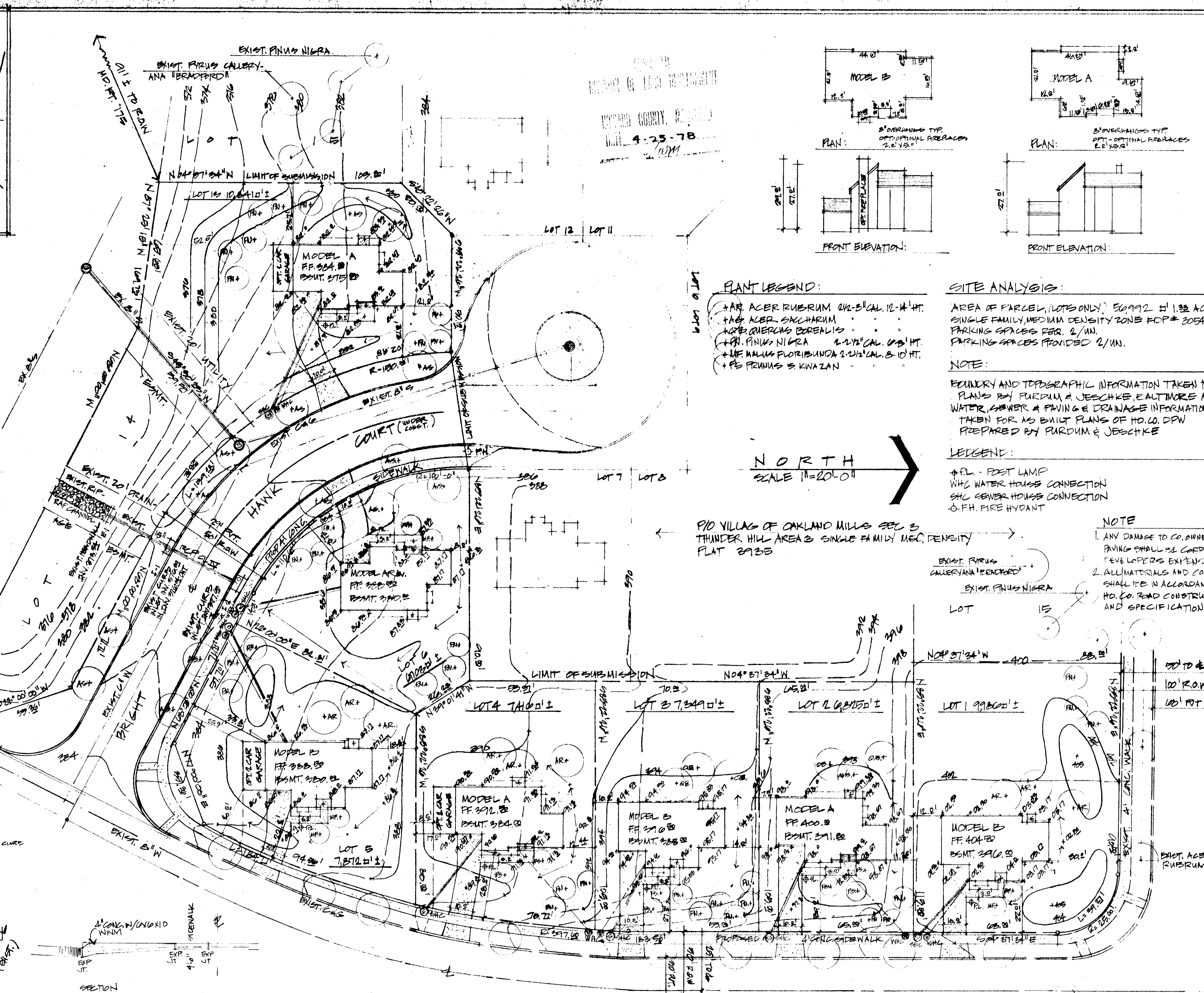


PLAN: TYPICAL DRIVEWAY HO. CO. ROAD CODE FB 10 D 34

STREETING FOR LANE (EXIST)

SECTION

Water Park 4/20/1978



- PLANT LEGEND:**
- +AR ACER RUBRUM 2 1/2" CAL. 12'-14' HT.
 - +AS ACER SACCHARUM 2 1/2" CAL. 12'-14' HT.
 - +OR QUERCUS COREALIS 2 1/2" CAL. 12'-14' HT.
 - +PN PINUS NIGRA 2 1/2" CAL. 12'-14' HT.
 - +LF MALUS FLORIBUNDA 2 1/2" CAL. 8' 10" HT.
 - +PB PRUNUS S. KNAZAN 2 1/2" CAL. 8' 10" HT.

SITE ANALYSIS:

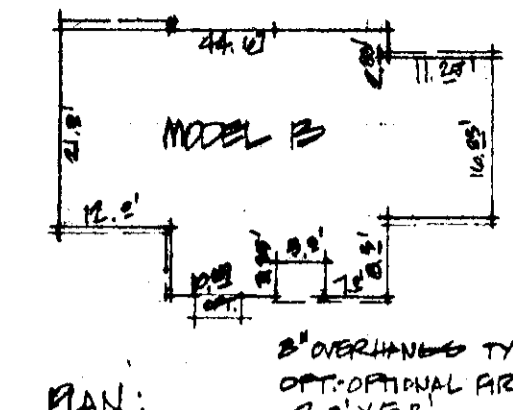
AREA OF PARCEL (LOTS ONLY) 50,992 S.F. 1.16 ACRES
 SINGLE FAMILY, MEDIUM DENSITY ZONE FCP # 3054 ASD-32
 PARKING SPACES PER 2/UN.
 PARKING SPACES PROVIDED 2/UN.

NOTE:

BOUNDARY AND TOPOGRAPHIC INFORMATION TAKEN FROM PLANS BY PURDUM & JESCHKE, BALTIMORE MD. WATER, SEWER & PAVING & DRAINAGE INFORMATION TAKEN FOR AS BUILT PLANS OF HO. CO. DPW PREPARED BY PURDUM & JESCHKE

- LEGEND:**
- +PL - POST LAMP
 - W/C WATER HOUSE CONNECTION
 - S/C SEWER HOUSE CONNECTION
 - o-FH FIRE HYDRANT

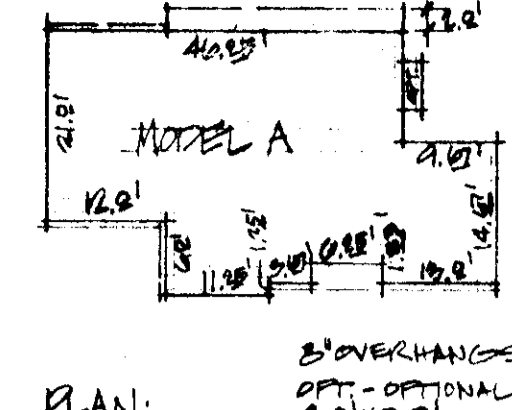
- NOTE:**
- ANY DAMAGE TO CO. OWNED R.O.W. OR PAVING SHALL BE CORRECTED AT THE DEVELOPER'S EXTENSE.
 - ALL MATERIALS AND CONSTRUCTION SHALL BE IN ACCORDANCE WITH THE HO. CO. ROAD CONSTRUCTION CODE AND SPECIFICATIONS



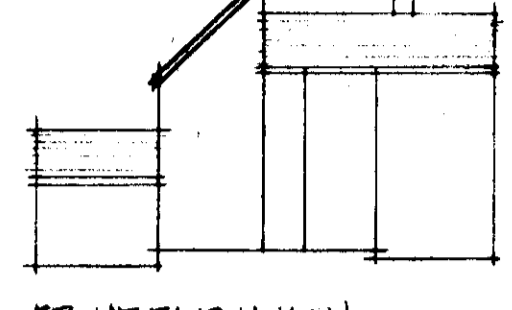
PLAN: MODEL B



FRONT ELEVATION: MODEL B



PLAN: MODEL A



FRONT ELEVATION: MODEL A

SHEET 1 OF 2

AREA: GUY CHAFFIN & ASSOC., INC.
 1000 CENTURY PLAZA SUITE 129
 COLUMBIA, MD 21044
 381-1515

COLUMBIA

VILLAGE OF OAKLAND MILLS SEC. 1 THUNDER HILL AREA 3
 FB 10 F.I.L.A. OPEN SPACE
 BLOCK 21, LOTS 1-15
 C/FB BLOCK 21, LOTS 1-15
 SINGLE FAMILY MEDIUM DENSITY
 SCALE: AS SHOWN V.A.R. 1/2" = 1' 0"

APPROVED: HOWARD COUNTY OFFICE OF PLANNING & ZONING
 PLANNING DIRECTOR
 DATE: 7/25/78

APPROVED: HOWARD COUNTY OFFICE OF PLANNING & ZONING
 PLANNING DIRECTOR
 DATE: 7/25/78

APPROVED: PUBLIC WATER AND PUBLIC SEWER SYSTEM
 HOWARD COUNTY HEALTH DEPARTMENT
 DATE: 7-25-78

APPROVED: FOR PUBLIC WATER, PUBLIC SEWER AND STORM DRAINAGE SYSTEMS AND ROADS
 Robert E. Spindler
 DIRECTOR
 DATE: 7/27/78

SDP-78-90c

