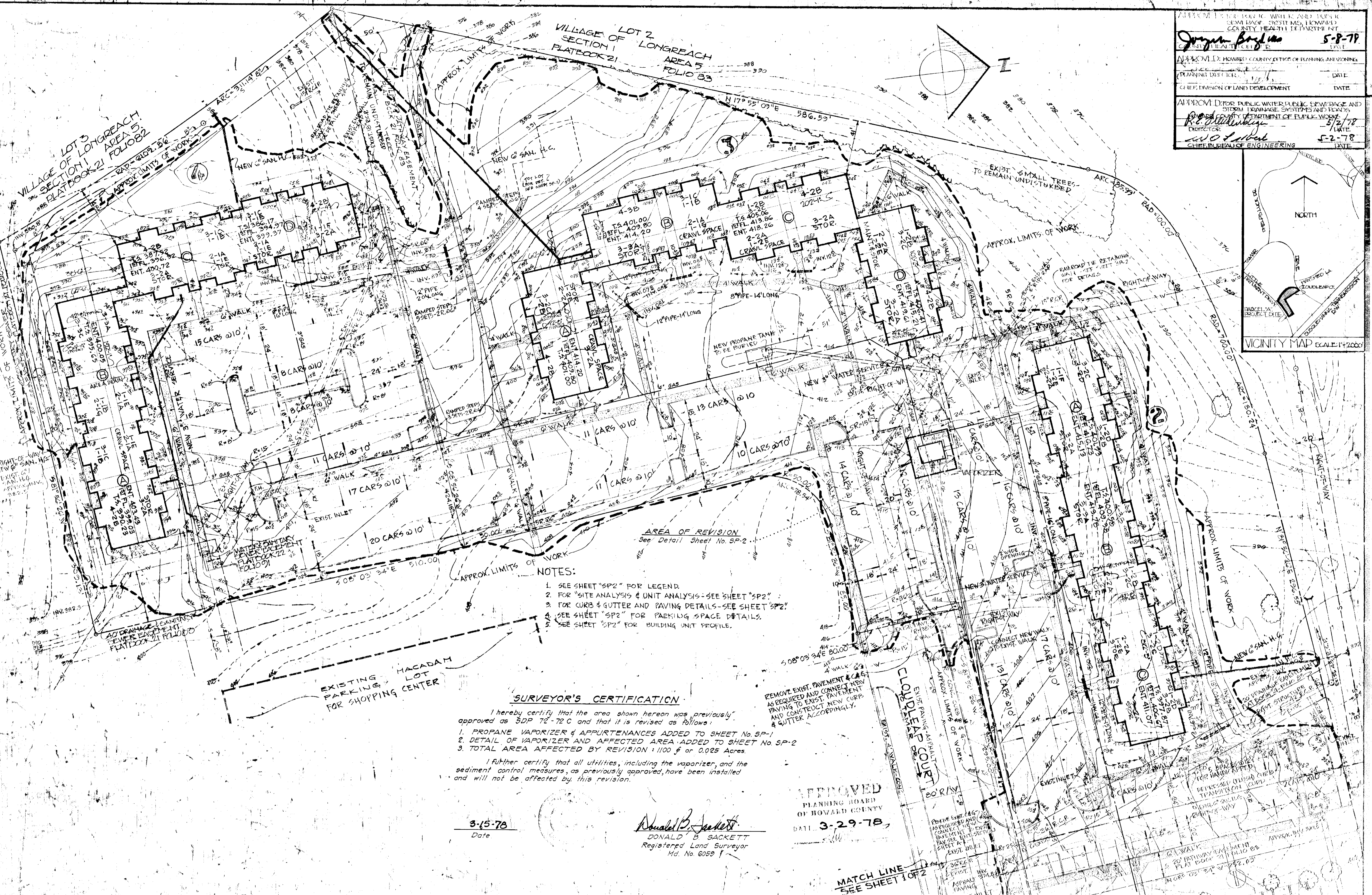
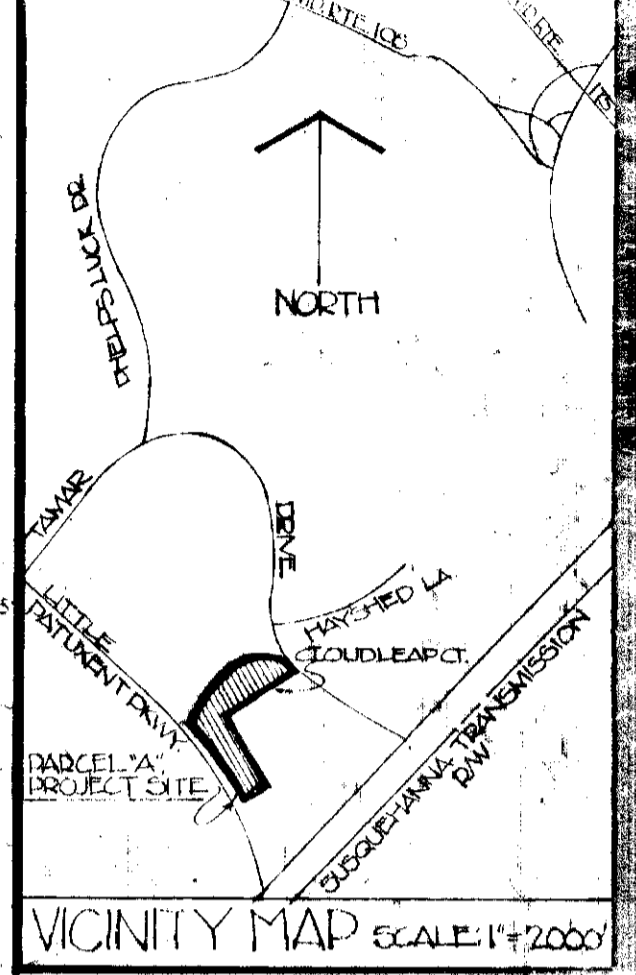
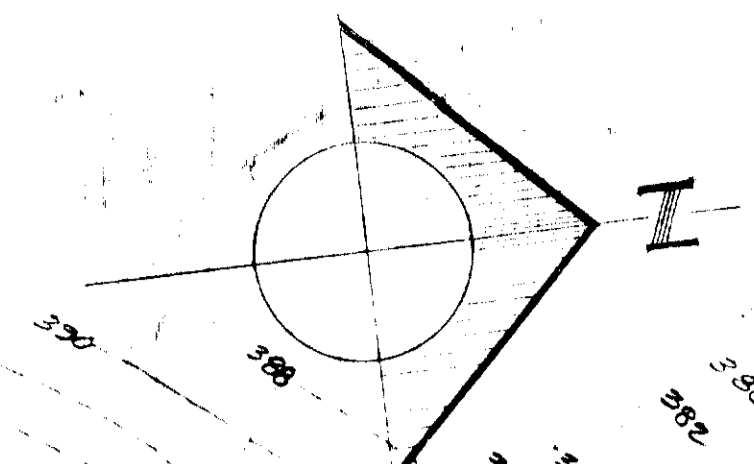


APPROVED FOR PUBLIC WATER, PUBLIC SEWERAGE AND STORM DRAINAGE SYSTEMS AND DETAILS
 APPROVED FOR PUBLIC WATER, PUBLIC SEWERAGE AND STORM DRAINAGE SYSTEMS AND DETAILS

James Boykin 5-8-79
 CHIEF OF ENGINEERING DATE

APPROVED FOR PLANNING AND ZONING
 PLANNING OFFICER DATE
 CHIEF DIVISION OF LAND DEVELOPMENT DATE

APPROVED FOR PUBLIC WATER, PUBLIC SEWERAGE AND STORM DRAINAGE SYSTEMS AND DETAILS
R.C. Atkinson 5/2/78
 DIRECTOR DATE
W.O. Gilbert 5-2-78
 CHIEF BUREAU OF ENGINEERING DATE



NOTES:
 1. SEE SHEET "SP2" FOR LEGEND.
 2. FOR "SITE ANALYSIS & UNIT ANALYSIS" - SEE SHEET "SP2".
 3. FOR CURB & GUTTER AND PAVING DETAILS - SEE SHEET "SP2".
 4. SEE SHEET "SP2" FOR PARKING SPACE DETAILS.
 5. SEE SHEET "SP2" FOR BUILDING UNIT PROFILE.

SURVEYOR'S CERTIFICATION
 I hereby certify that the area shown hereon was previously approved as SDP 78-72 C and that it is revised as follows:
 1. PROPANE VAPORIZER & APPURTENANCES ADDED TO SHEET No. SP-1
 2. DETAIL OF VAPORIZER AND AFFECTED AREA ADDED TO SHEET SP-2
 3. TOTAL AREA AFFECTED BY REVISION: 1100 sq. or 0.025 Acres.

I further certify that all utilities, including the vaporizer, and the sediment control measures, as previously approved, have been installed and will not be affected by this revision.

Donald B. Sackett
 DONALD B. SACKETT
 Registered Land Surveyor
 Md. No. 60529

3-15-78
 Date

APPROVED
 PLANNING BOARD
 OF HOWARD COUNTY
 DATE 3-29-78

PARCEL "A" SITE AREA 5

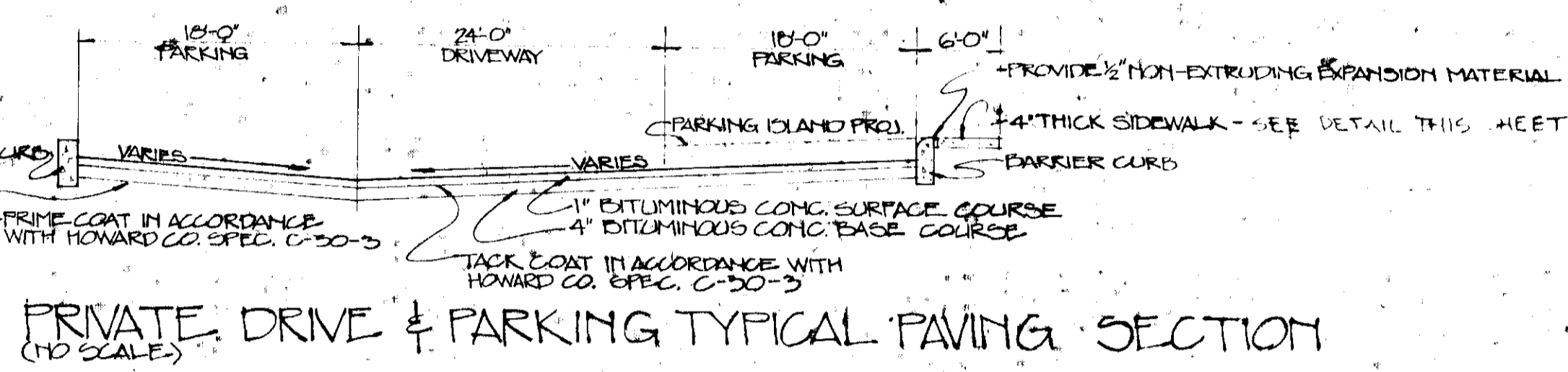
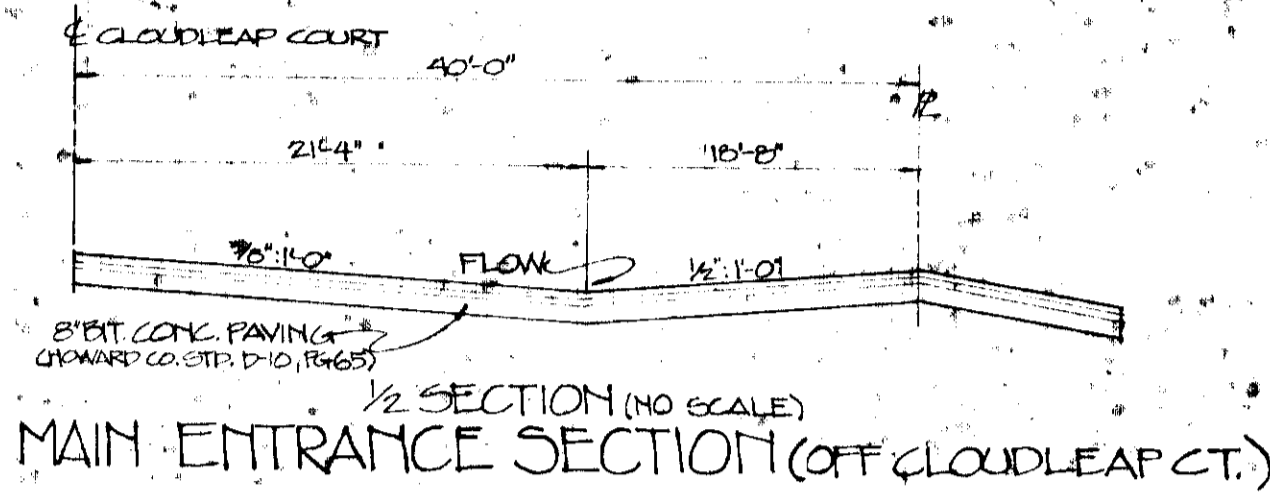
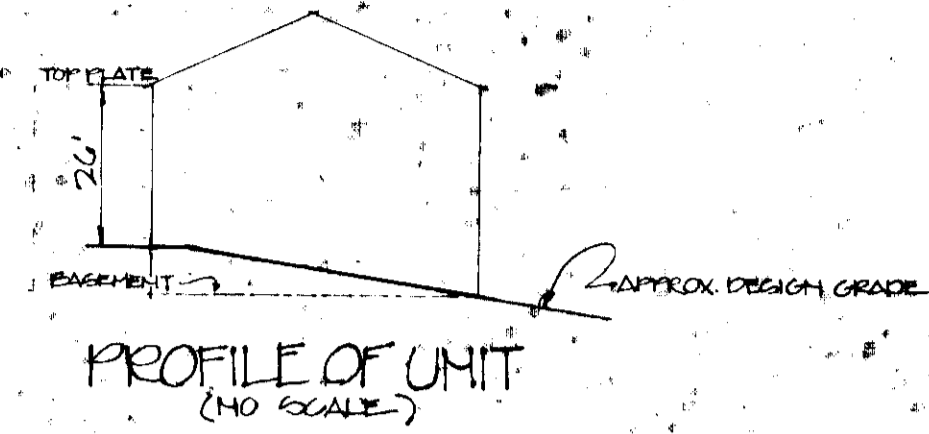
SOIL ANALYSIS

AREA A
 REMAINING COVERAGE ALLOWED @ 27%
 REMAINING COVERAGE PROVIDED
 PARKING AND TRAVEL COVERAGE
 GREEN AREA PROVIDED
 NO OF UNITS ALLOWED
 NO OF UNITS PROVIDED
 PARKING REQUIRED @ 1.5 UNIT (INCLUDES 7 SPACES FOR HANDICAPPED)
 PARKING PROVIDED (INCLUDES 7 SPACES FOR HANDICAPPED) 267 SPACES
 267 SPACES

9537A, 145432#
 143401#
 60411#
 91512#
 263522#
 178
 178
 267 SPACES
 267 SPACES

UNIT ANALYSIS

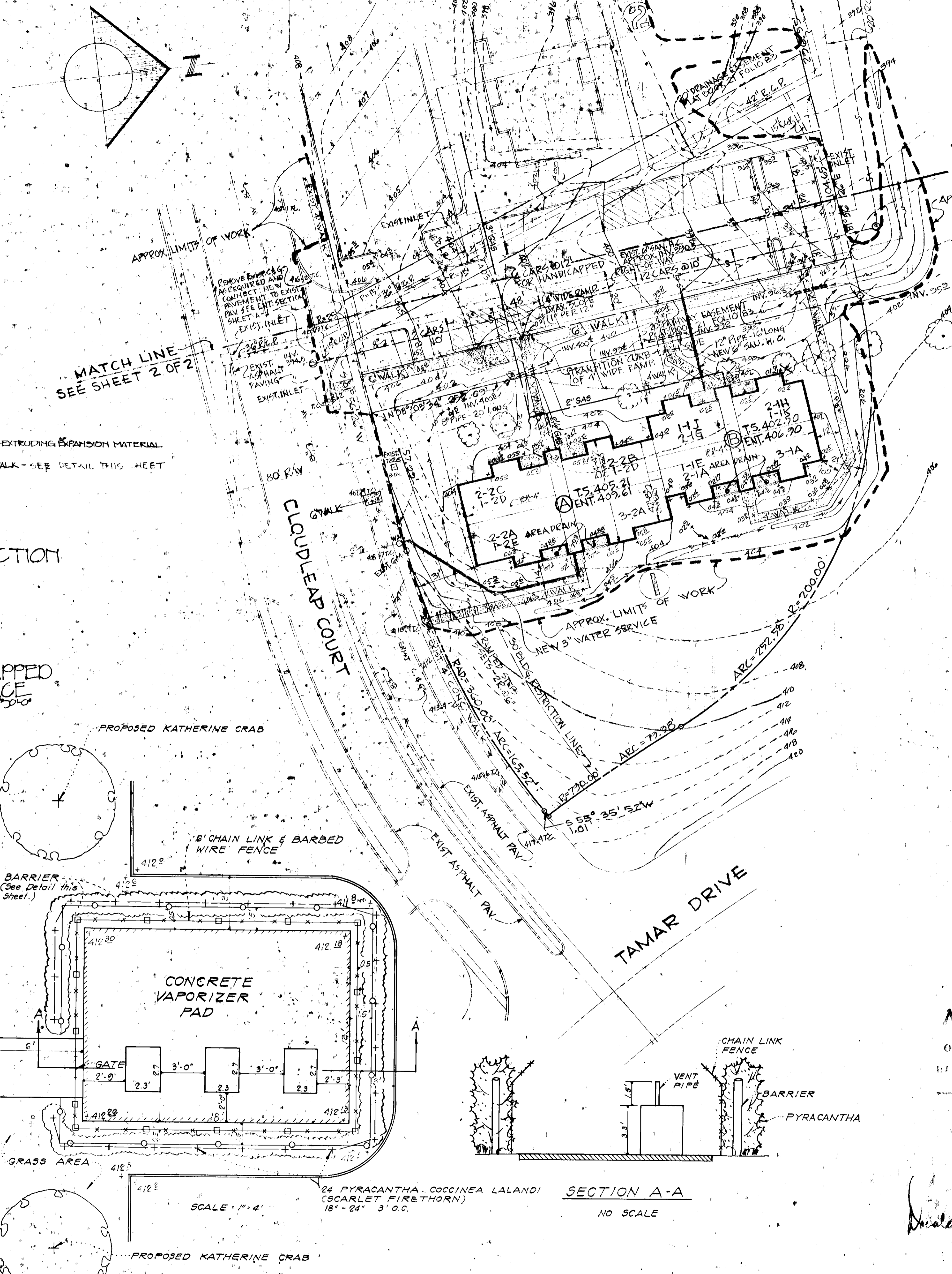
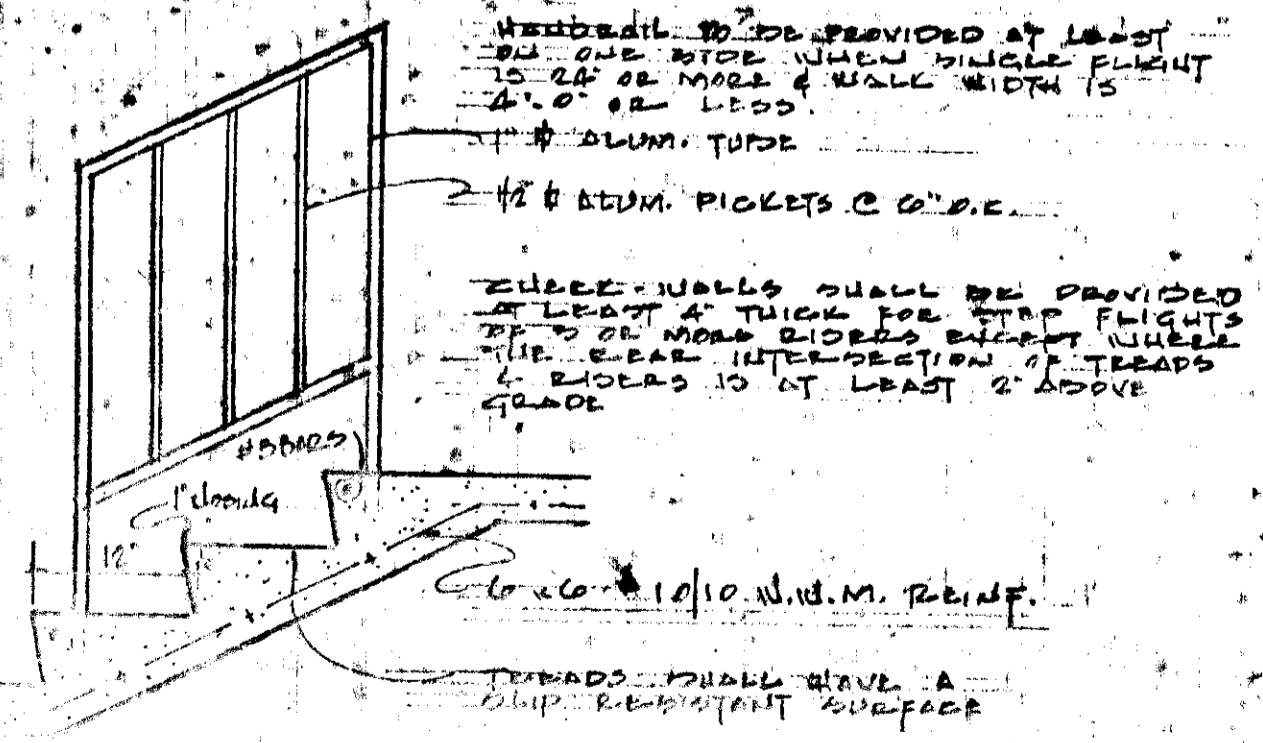
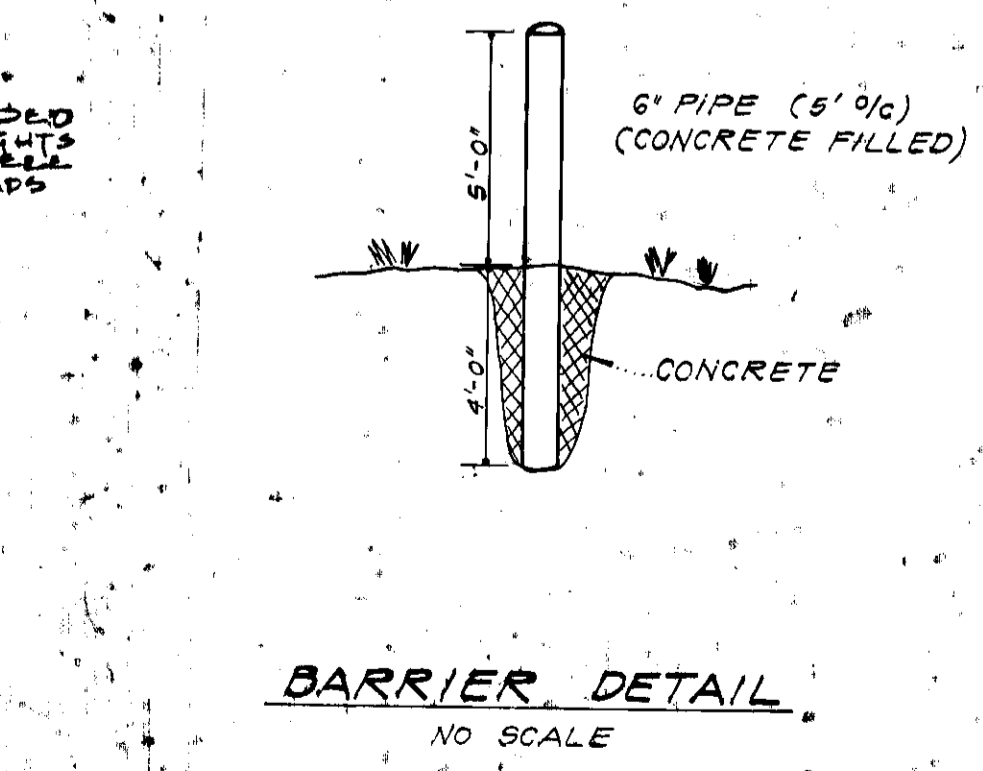
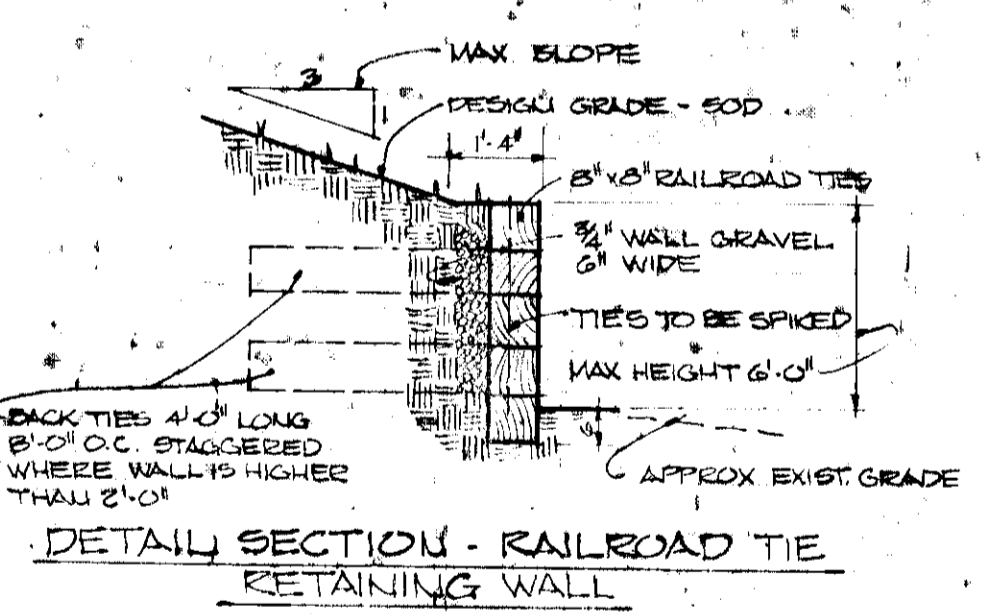
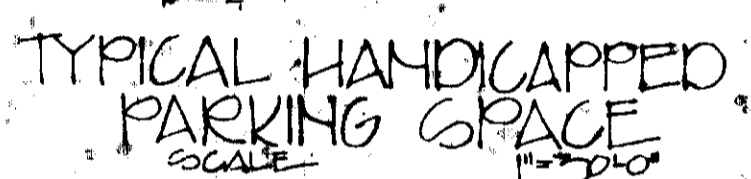
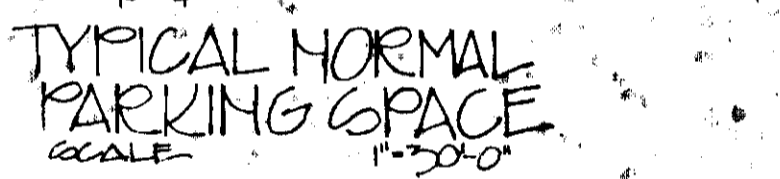
BUILDING NO.	1	2	3	4	TOTALS
1 BEDROOM	5	2	2	2	11
2 BR	1	1	1	1	4
3 BR	1	1	1	1	4
TOTAL	7	4	4	4	19
%S	27.07	61.87	11.27		



LEGEND

- EXISTING:**
- 100' CONTOUR - 1' INTERVAL
 - 400' CONTOUR - 2' INTERVAL
 - 90.5' SPOT GRADE
 - ASPHALT PAVING
 - TREE OR WOODED AREA
 - STORM DRAIN SIZE & STRUCTURE
 - SANITARY SEWER SIZE & MH
 - WATERLINE & SIZE
 - WATER METER
 - FIRE HYDRANT

- PROPOSED DESIGN:**
- CONTOUR - 2' INTERVAL
 - CONTOUR - 1' INTERVAL
 - SPOT ELEVATION
 - BUILDING
 - CONCRETE PAVING
 - CONCRETE CURB
 - DRIVES & PARKING FENCE
 - RETAINING WALL
 - WOODS TO BE LEFT UNDISTURBED
 - LIMITS OF WORK
 - DRAIN PIPE



APPROVED FOR PUBLIC WATER, PUBLIC SEWERAGE AND STORM DRAINAGE SYSTEMS AND ROADS
 HOWARD COUNTY DEPARTMENT OF PUBLIC WORKS
 R.E. [Signature] 5/2/78
 DIRECTOR DATE

APPROVED FOR PLANNING AND ZONING
 HOWARD COUNTY OFFICE OF PLANNING AND ZONING
 J. [Signature] 5-8-78
 PLANNING DIRECTOR DATE

APPROVED FOR SOIL EROSION AND SEDIMENT CONTROL BY THE HOWARD SOIL CONSERVATION DISTRICT.
 [Signature] Date 4-17-78
 HOWARD S.C.D.

Reviewed for HOWARD S.C.D.
 Name
 and meets Technical Requirements
 [Signature] Date 4-17-78
 Signature
 U.S. Soil Conservation Service

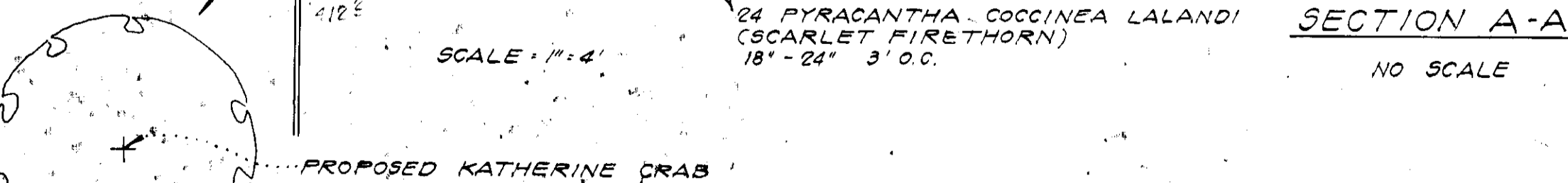
THIS DEVELOPMENT PLAN IS APPROVED FOR SOIL EROSION AND SEDIMENT CONTROL BY THE HOWARD SOIL CONSERVATION DISTRICT.
 Approved [Signature] Date 4-17-78
 HOWARD S.C.D.

APPROVED
 PLANNING BOARD
 OF HOWARD COUNTY
 MARCH 3-29-78

[Signature]

TYPICAL EXTERIOR STEPS

BARRIER DETAIL



121GA-76
 VILLAGE OF LONGLEACH COLUMBIA, MARYLAND
 ARCHITECT ORGANIZATION INC.
 DEVELOPMENT PLAN
 SCALE 1\"/>