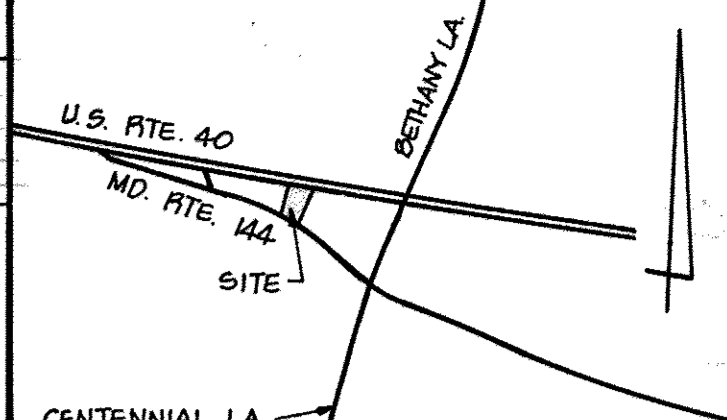
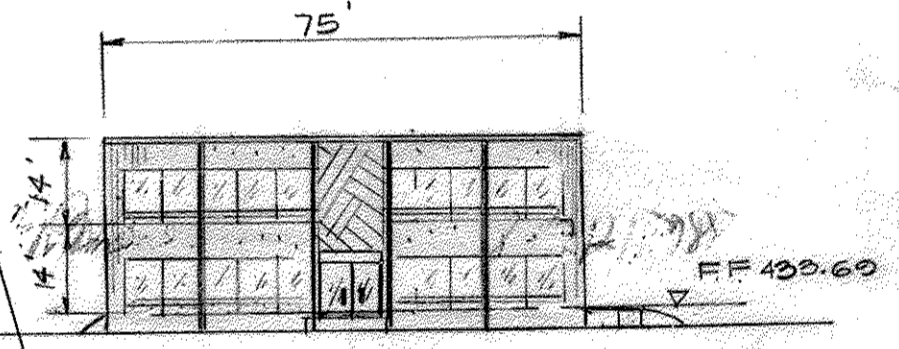


REVISION No.	DATE	COMMENTS
1	11/7/78	SHOW AS BUILT CONDITIONS UPDATE LANDSCAPING, PARKING CHANGE BUILDING USE TO AMBULATORY HEALTH CARE FACILITY



VICINITY MAP
SCALE: 1" = 1200'

- GENERAL NOTES**
- TAX MAP 24 PARCEL 806
 - EXISTING ZONING: B-2
 - DEED REFERENCE: 350/52
 - PROPOSED SITE USE: OFFICES AMBULATORY HEALTH CARE FACILITY
 - HORIZONTAL AND VERTICAL CONTROL ON MARYLAND STATE DATUM.
 - AREA OF SITE: 0.50 AC ±
 - PARKING REQUIREMENTS: 5 PARKING SPACES PER 1,000 SQ FT
PARKING SPACES PER EMPLOYEE: 0.7
NUMBER OF EMPLOYEES: 69
PARKING SPACES REQUIRED: 48-16
PARKING SPACES PROVIDED: 22, INCLUDING 2 HANDICAPPED SPACES
 - EXTERIOR LIGHTING SHALL BE DIRECTED AWAY FROM PUBLIC FLOW AND RESIDENTIAL DISTRICTS.
 - BUILDING DOWNSPOUTS TO DISCHARGE DIRECTLY INTO THE STORM WATER MANAGEMENT POND.
 - TOTAL BUILDING COVERAGE OF PARCEL: 10.3%
 - TOTAL OPEN SPACE PROVIDED: 400% (INCLUDING LANDSCAPING)
 - LANDSCAPED ISLANDS IN PARKING: 10%
 - TOTAL AREA OF RETAIL SALES SPACE: NONE
 - RTE. 40 AND FREDERICK ROAD ARE EXISTING AND PUBLIC.



BUILDING SCHEMATIC PROFILE
SCALE: 1" = 30'

APPROVED: FOR PUBLIC WATER AND PUBLIC SEWERAGE SYSTEMS.
HOWARD COUNTY HEALTH DEPARTMENT.

Robert E. Wynn 8-21-78
COUNTY HEALTH OFFICER DATE

APPROVED: HOWARD COUNTY OFFICE OF PLANNING AND ZONING.

Thomas H. James, Jr. 8-22-78
PLANNING DIRECTOR DATE

John W. Murchison 8/22/78
CHIEF, DIVISION OF LAND DEVELOPMENT DATE

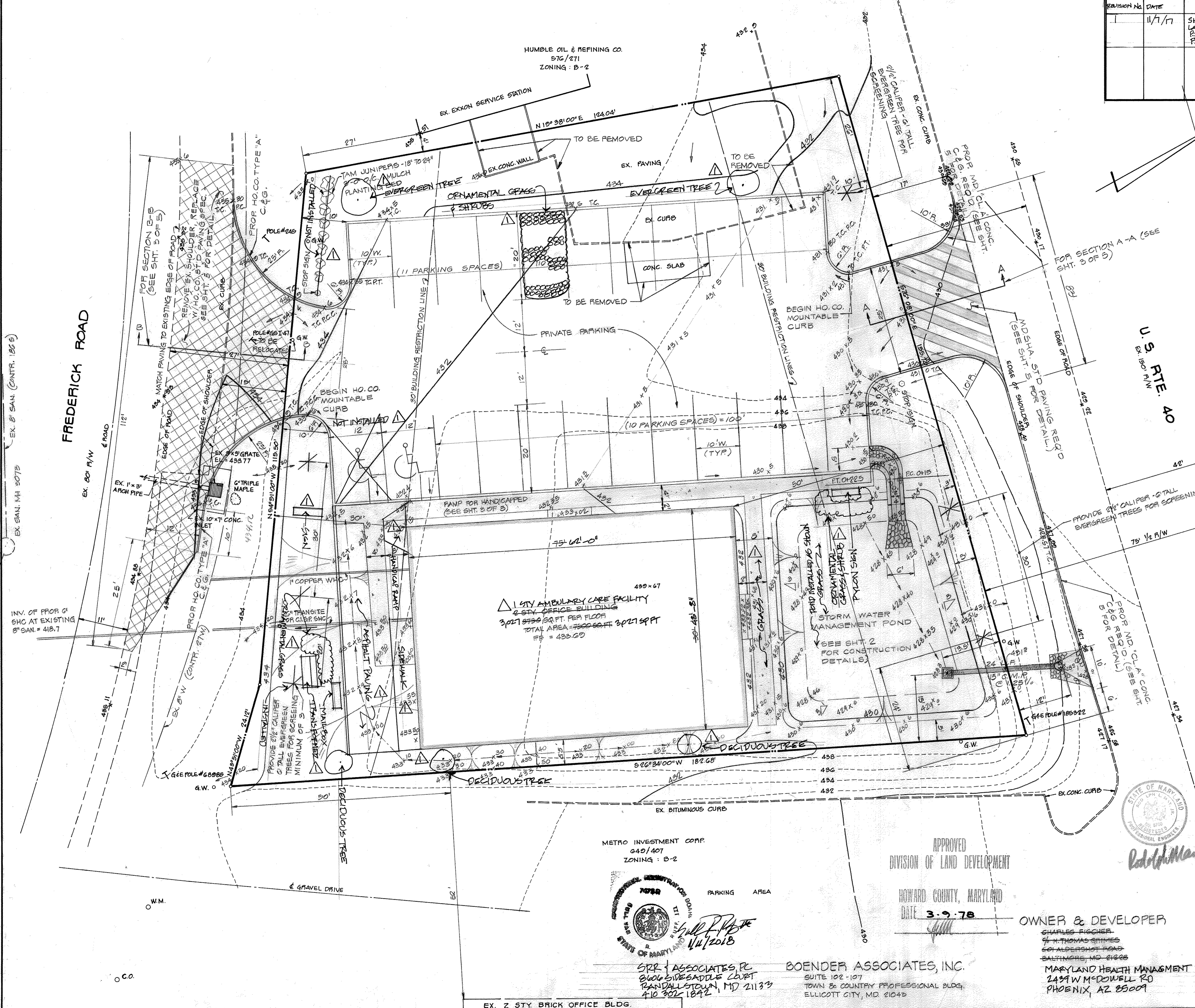
APPROVED: FOR PUBLIC WATER, PUBLIC SEWERAGE AND STORM DRAINAGE SYSTEMS AND PUBLIC ROADS.

Richard E. Freudenberger 6/29/78
DIRECTOR DATE

W. O. Filbert 6-29-78
CHIEF, BUREAU OF ENGINEERING DATE

NOTE: BOUNDARY BASED ON SURVEY MADE BY CLAUDE M. SKINNER, REG. SURVEYOR

TITLE				
SITE DEVELOPMENT PLAN				
PROJECT				
GRIMES OFFICE BUILDING				
LOCATION		HOWARD CO., MD.		
2ND ELECTION DISTRICT				
DATE:	DESIGN BY:	DRAWN BY:	CHECKED BY:	
NOV, 1977	W.H.N.	J.B.	R.L.M.	
SCALE:	JOB NO.:	DRAWING NO.:	S.D.P. - 78-67	
1" = 10'	77184	1 OF 5		
boender associates engineers/surveyors/planners				



METRO INVESTMENT CORP.
640/407
ZONING: B-2

APPROVED
DIVISION OF LAND DEVELOPMENT

HOWARD COUNTY, MARYLAND
DATE 3-9-78

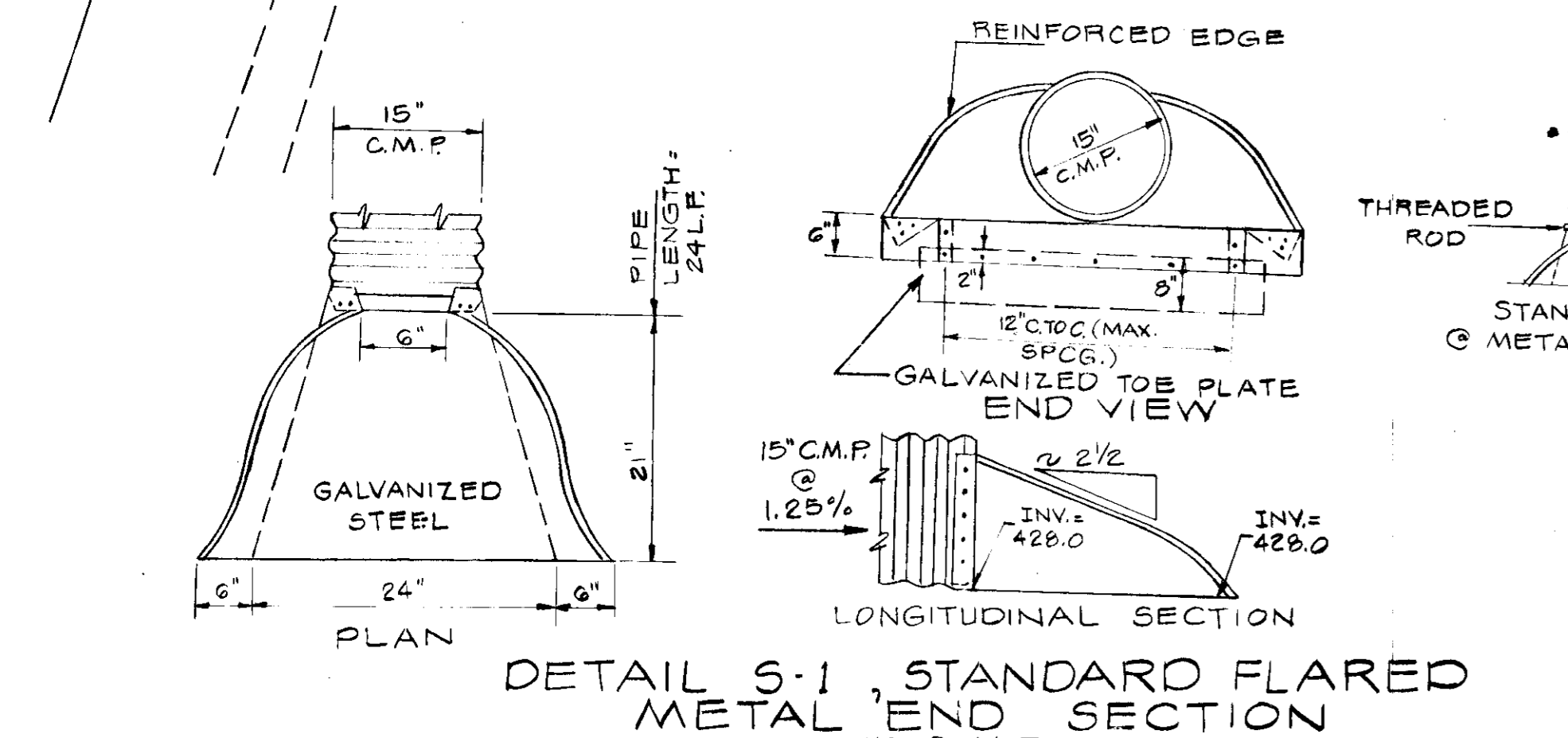
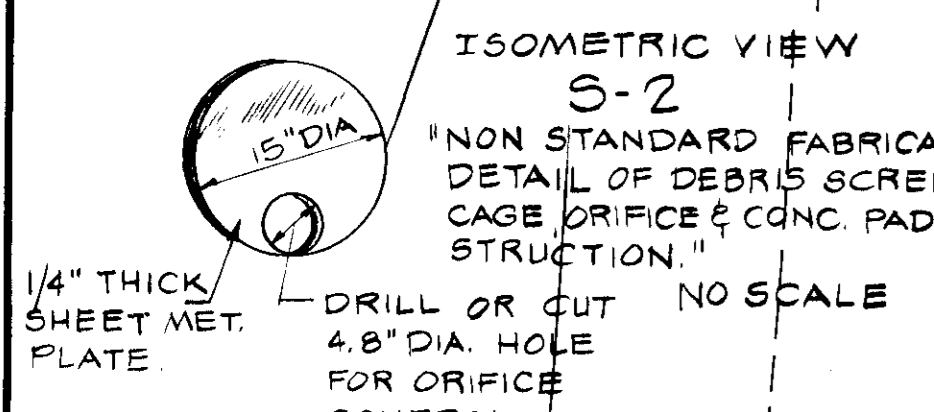
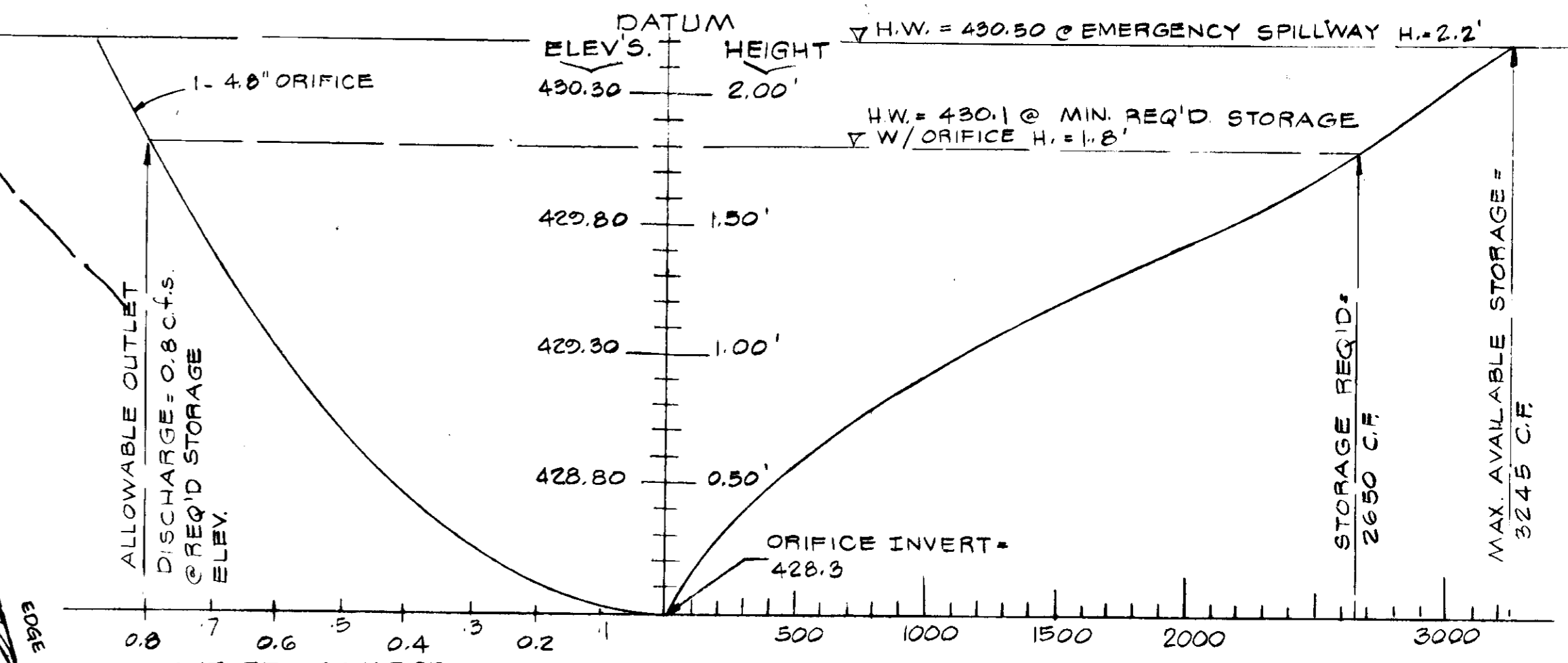
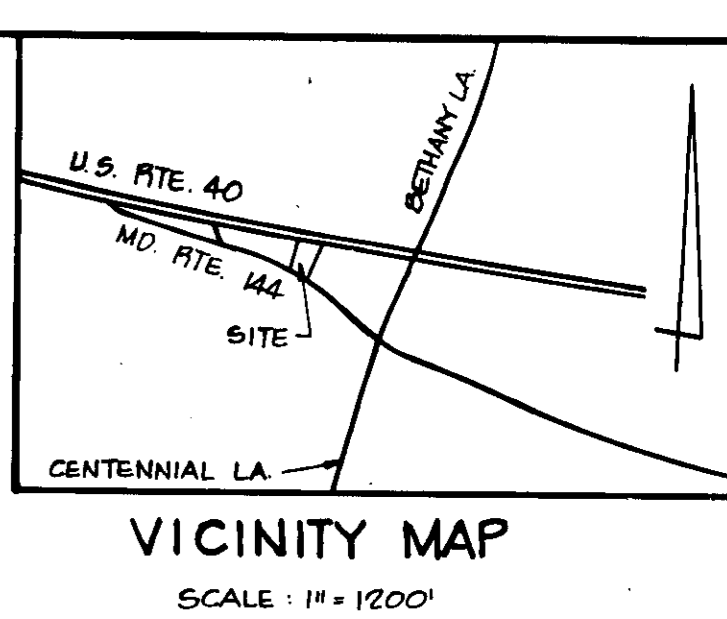
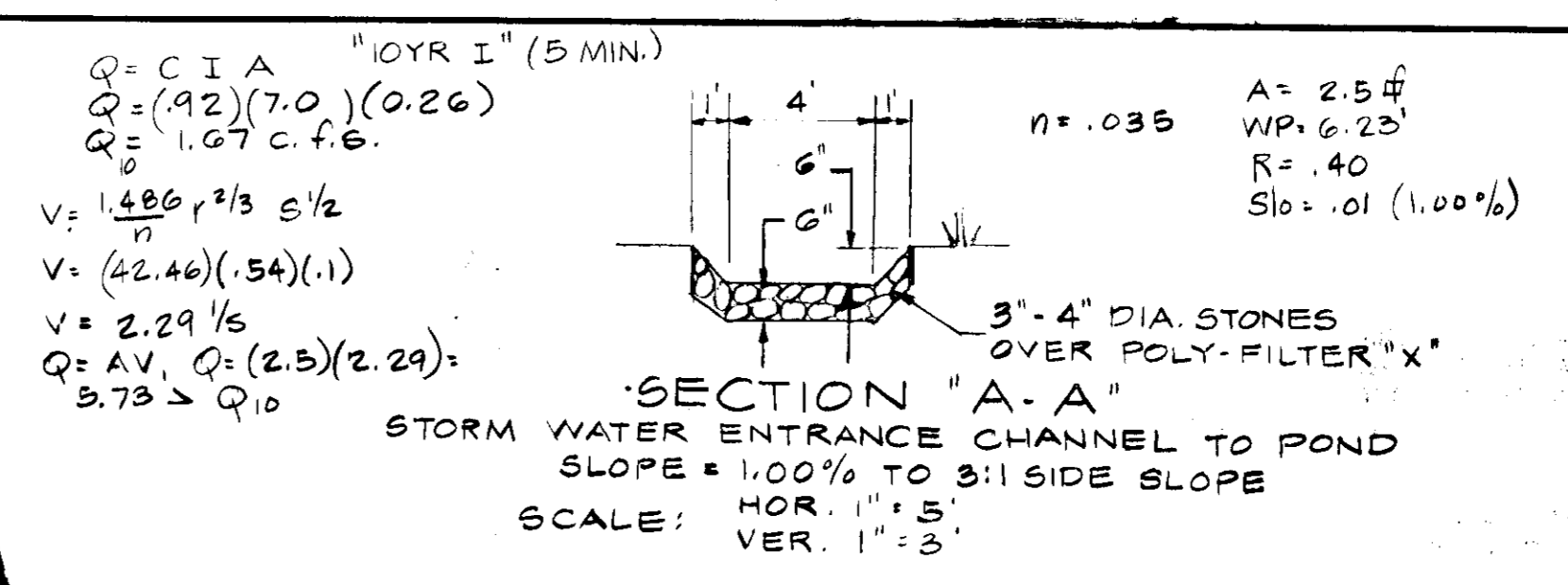
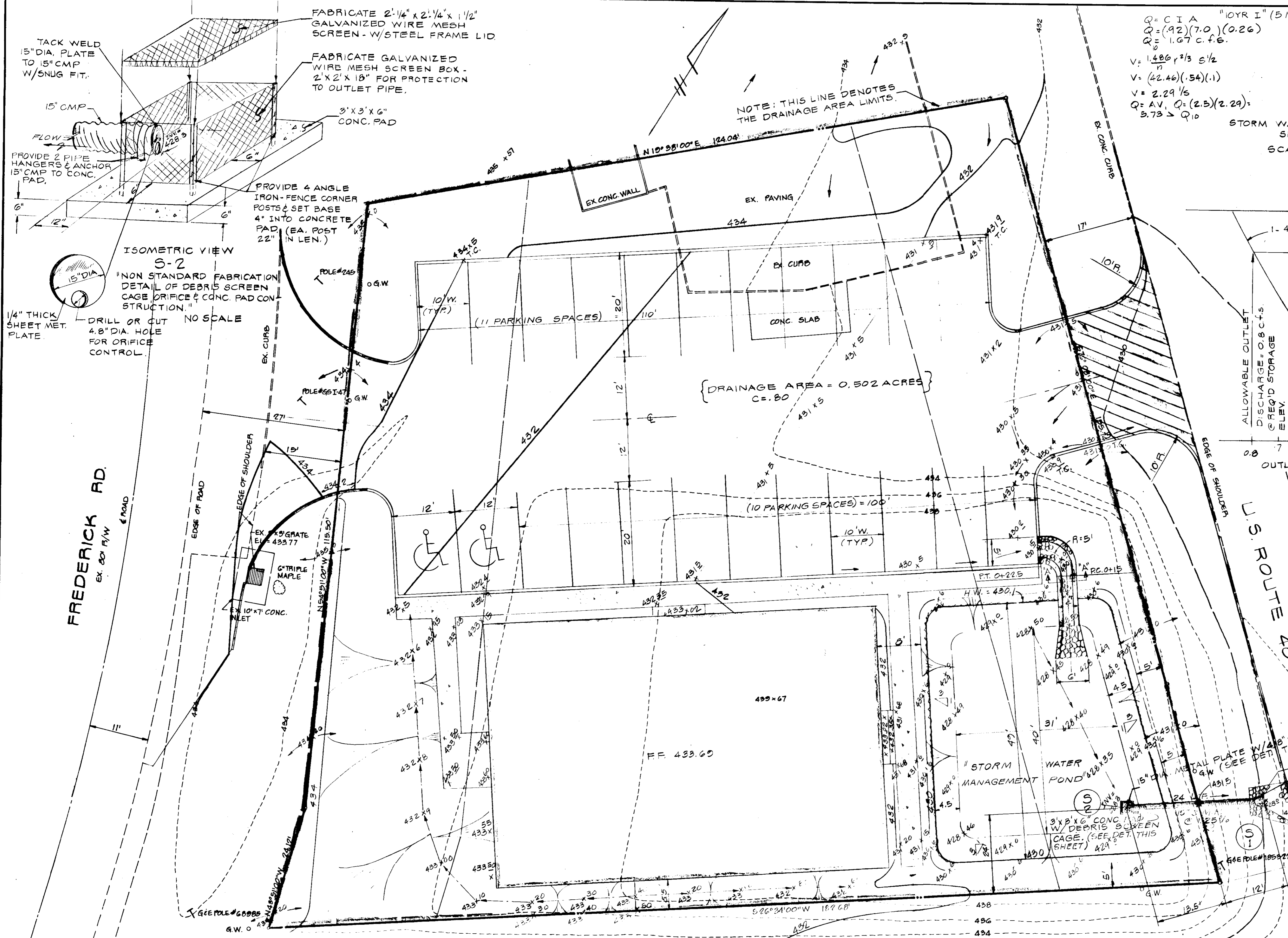
OWNER & DEVELOPER
CHARLES FIGGIER
61 H. THOMAS GRIMES
661 ALDERSHOT ROAD
BALTIMORE, MD 21228
MARYLAND HEALTH MANAGEMENT
2439 W. McDOWELL RD
PHOENIX, AZ 85009



SRR & ASSOCIATES, P.C.
8106 SWEDESBOROUGH COURT
RANDALLSTOWN, MD 21133
410 302 1842

BOENDER ASSOCIATES, INC.
SUITE 102-107
TOWN & COUNTRY PROFESSIONAL BLDG.
ELLCOTT CITY, MD 21045

EX. 2 STY. BRICK OFFICE BLDG.



BOENDER ASSOCIATES, INC.
SUITE 102 - 107
TOWN & COUNTRY PROFESSIONAL BLDG.
ELLCOTT CITY, MD 21043

APPROVED FOR PUBLIC WATER AND PUBLIC SEWERAGE SYSTEMS, HOWARD COUNTY HEALTH DEPARTMENT.
Robert F. Wine 8-21-78
COUNTY HEALTH OFFICER DATE

APPROVED: HOWARD COUNTY OFFICE OF PLANNING AND ZONING
Thomas J. ... 8-22-78
PLANNING DIRECTOR DATE

Robert W. Mischelman / P.D. 8-22-78
CHIEF, DIVISION OF LAND DEVELOPMENT DATE

APPROVED FOR PUBLIC WATER, PUBLIC SEWERAGE AND STORM DRAINAGE SYSTEMS AND ROADS, HOWARD COUNTY DEPARTMENT OF PUBLIC WORKS.
Richard E. ... 6/29/78
DIRECTOR DATE

... 6-2-78
CHIEF BUREAU OF ENGINEERING DATE

OWNER & DEVELOPER
CHARLES FISCHER
c/o H. THOMAS GRIMES
601 ALDERSHOT ROAD
BALTIMORE, MARYLAND 21220

DRAINAGE AREA MAP
COMPS, PLAN, PROFILE & DETAILS

PROJECT: STORM WATER MANAGEMENT			
SUBJECT: GRIMES OFFICE BUILDING			
LOCATION: 2ND ELECTION DISTRICT	HOWARD CO., MD		
DATE: DEC, 1977	DESIGN BY: W.H.N.	DRAWN BY: W.H.N.	CHECKED BY: R.L.M.
SCALE: 1" = 10'	JOB NO.: 77184	DRAWING NO.: 2 OF 5	SDP-78-67

boender associates engineers/surveyors/planners

3-9-78

SCALE: HOR. 1" = 10'
VER. 1" = 5'

DEVELOPER'S CERTIFICATE

I CERTIFY THAT ALL DEVELOPMENT AND/OR CONSTRUCTION WILL BE ACCORDING TO THIS PLAN OF DEVELOPMENT AND PLAN FOR EROSION AND SEDIMENT CONTROL AND I ALSO AUTHORIZE PERIODIC ON-SITE INSPECTIONS

BY THE HOWARD SOIL CONSERVATION DISTRICT OR THEIR AUTHORIZED AGENTS AS ARE DEEMED NECESSARY. DEVIATION WILL NOT BE MADE UNLESS AUTHORIZED BY THE HOWARD SOIL CONSERVATION DISTRICT.

12/20/77 DATE

DEVELOPER

ENGINEER'S CERTIFICATE

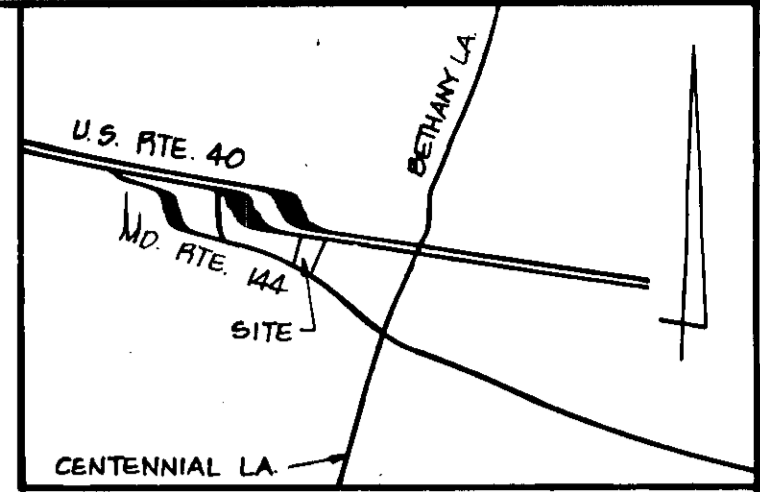
I CERTIFY THAT THIS PLAN FOR EROSION AND SEDIMENT CONTROL REPRESENTS A PRACTICAL AND WORKABLE PLAN BASED ON MY PERSONAL KNOWLEDGE OF THE SITE CONDITIONS AND THAT IT WAS PREPARED IN ACCORDANCE WITH THE REQUIREMENTS BY THE HOWARD SOIL CONSERVATION DISTRICT.

ENGINEER

12-20-77 DATE



THIS DEVELOPMENT PLAN IS APPROVED FOR SOIL EROSION AND SEDIMENT CONTROL BY THE HOWARD SOIL CONSERVATION DISTRICT. Approved by [Signature] Date 6-14-78 Howard S.C.D.



VICINITY MAP SCALE: 1" = 1200'

GENERAL NOTES

- 1. TAX MAP 24 PARCEL 806
2. EXISTING ZONING: B2
3. DEED REFERENCE: 350/52
4. PROPOSED SITE USE: OFFICES
5. HORIZONTAL AND VERTICAL CONTROL ON MARYLAND STATE DATUM.
6. AREA OF SITE: 0.50 AC
7. PARKING REQUIREMENTS: PARKING SPACES PER EMPLOYEE: 0.7 NUMBER OF EMPLOYEES: 25 PARKING SPACES REQUIRED: 18 PARKING SPACES PROVIDED: 23, INCLUDING 2 HANDICAPPED SPACES
8. EXTERIOR LIGHTING SHALL BE DIRECTED AWAY FROM PUBLIC R.O.W. AND RESIDENTIAL DISTRICTS.

SITE ANALYSIS

AREA: 0.50 AC.
DISTURBED AREA: 0.45 AC.
PAVED AREA: 0.17 AC.
REVEGETATED AREA: 0.23 AC

CONSTRUCTION SEQUENCE

- 1. OBTAIN GRADING PERMIT
2. NOTIFY HOWARD COUNTY BUREAU LICENSE INSPECTION AND PERMITS 24 HRS. PRIOR TO GRADING OPERATION.
3. INSTALL TEMPORARY EROSION CONTROL MEASURES.
4. INSTALL 15" DRAIN
5. ROUGH GRADE SITE. EARTH MUST BE STOCKPILED OR PLACED IN APPROVED LOCATION WITH SEDIMENT CONTROL MEASURES IN PLACE.
6. FINE GRADE PAVEMENT AREAS. STABILIZE W/BASE MATERIAL.
7. CONSTRUCT BUILDING.
8. APPLY TEMPORARY AND PERMANENT SEEDING AS REQUIRED.
9. REMOVE TEMPORARY SEDIMENT CONTROL MEASURES ONLY WITH APPROVAL OF HOWARD COUNTY BUREAU OF INSPECTIONS.
10. INSTALL SPECIAL PLATE AND DEBRIS SCREEN AT S-2.

Reviewed for [Signature] Name and meets Technical Requirements Date 6-14-78 U.S. Soil Conservation Service

APPROVED FOR PUBLIC WATER AND PUBLIC SEWERAGE SYSTEMS HOWARD COUNTY HEALTH DEPARTMENT. Robert E. Wines 8-21-78
APPROVED: HOWARD COUNTY OFFICE OF PLANNING AND ZONING. Planning Director John W. Marshallman 9-22-78
APPROVED FOR PUBLIC WATER, PUBLIC SEWERAGE AND STORM DRAINAGE SYSTEMS AND PUBLIC ROADS. Richard E. Freudenberger 6-29-78

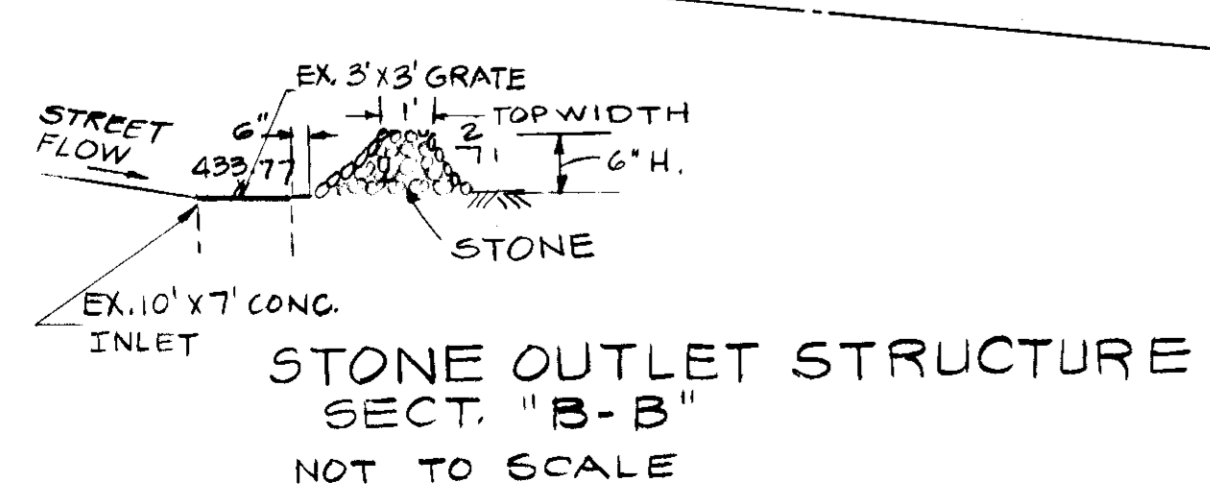
NOTE: BOUNDARY BASED ON SURVEY MADE BY CLAUDE M. SKINNER, REG. SURVEYOR

TRAP SCHEDULE table with columns: NO, VOLUME REQ'D, VOLUME PROVIDED, AREA, FILTER CREST, C.O. ELEV.

BOENDER ASSOCIATES, INC. SUITE 102-107 TOWN & COUNTRY PROFESSIONAL BLDG. ELLICOTT CITY, MD. 21043

OWNER & DEVELOPER CHARLES FISCHER 96 H. THOMAS GRIMES 601 ALDERSHOT ROAD BALTIMORE, MD 21228

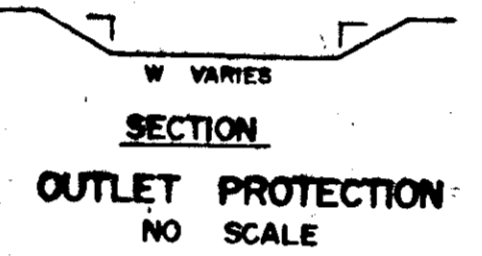
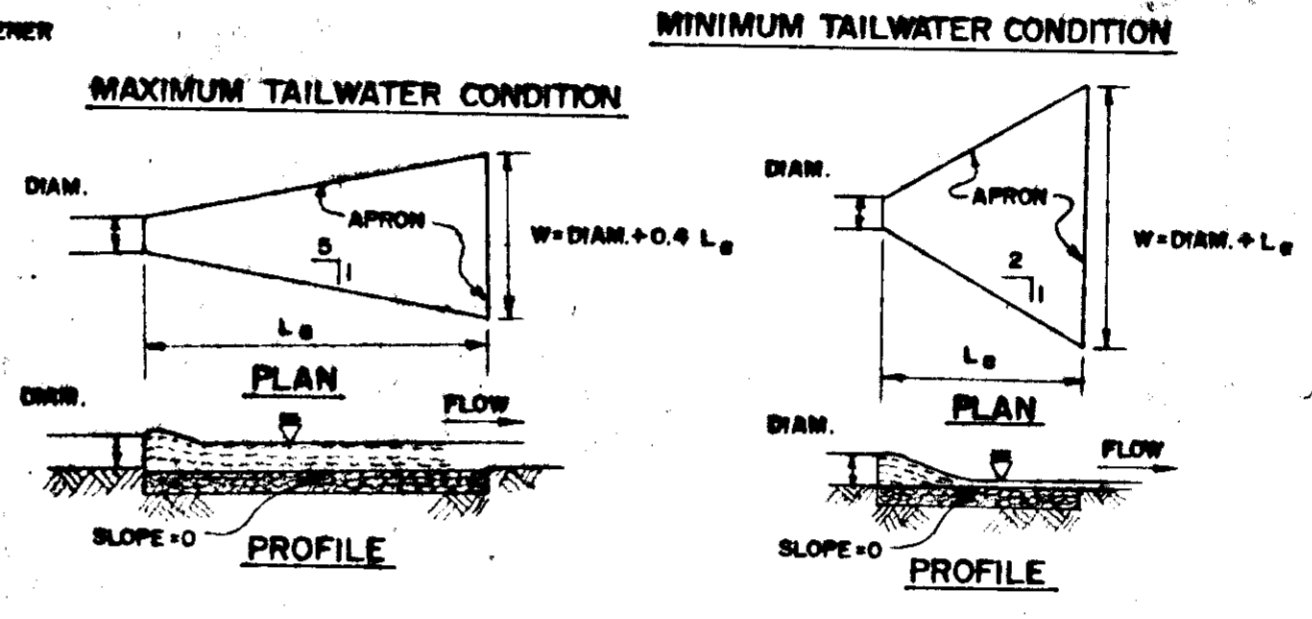
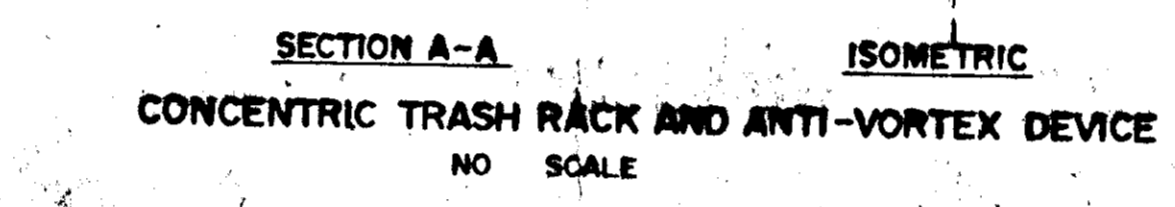
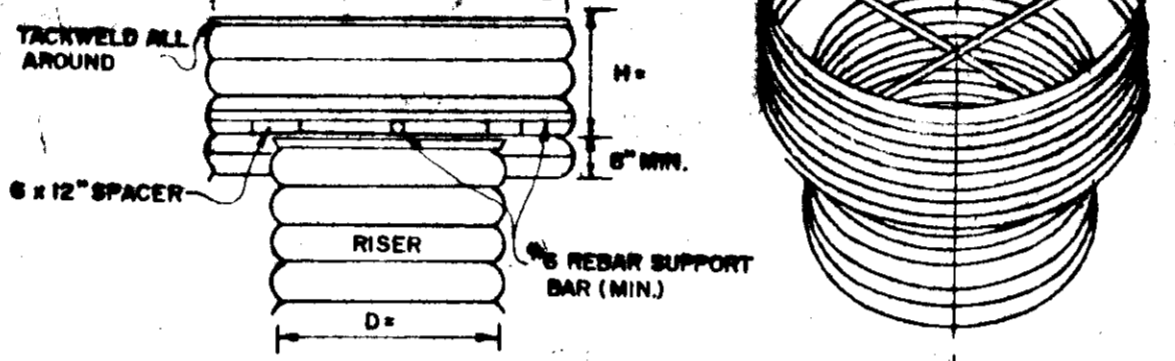
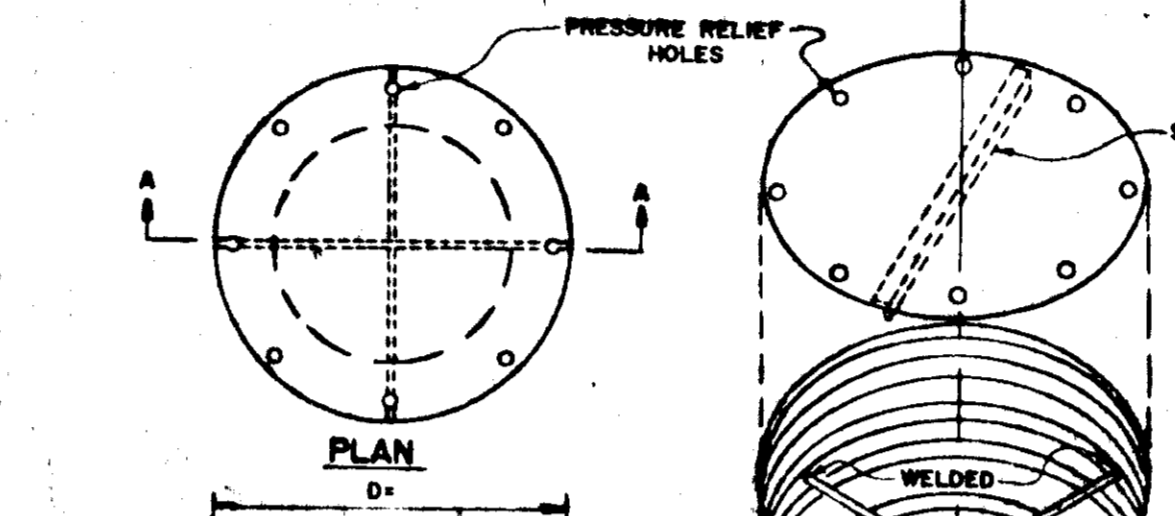
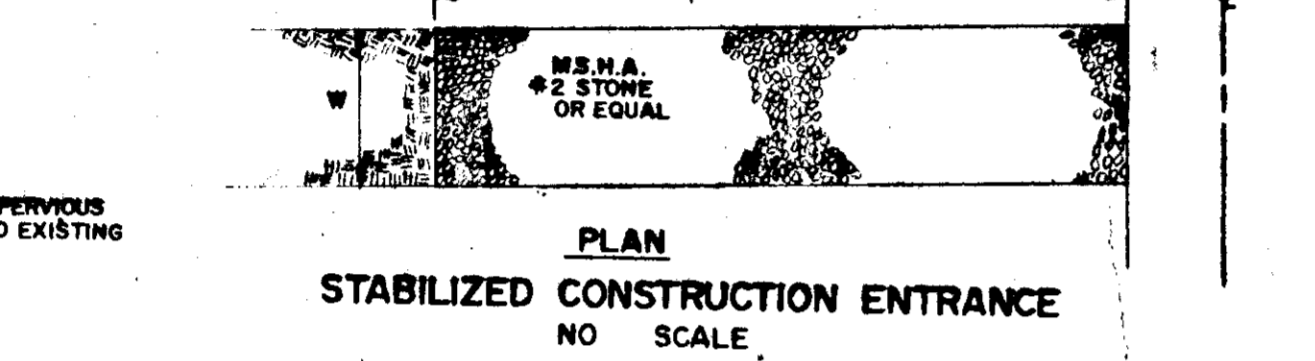
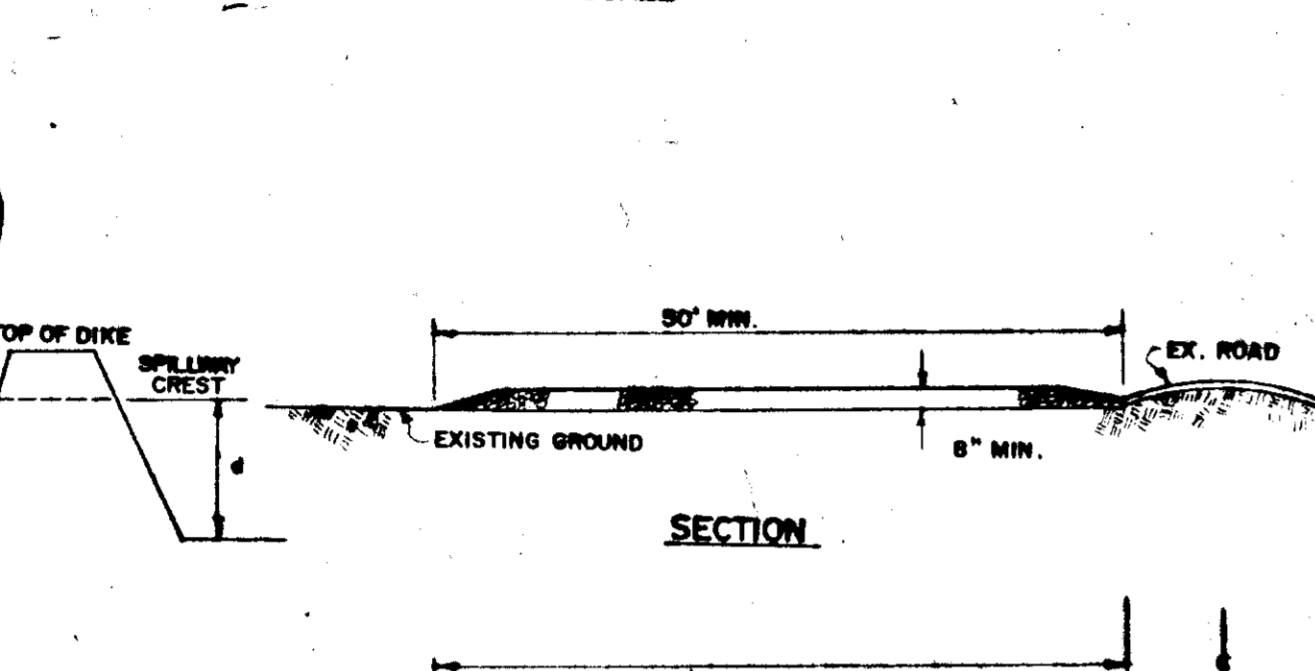
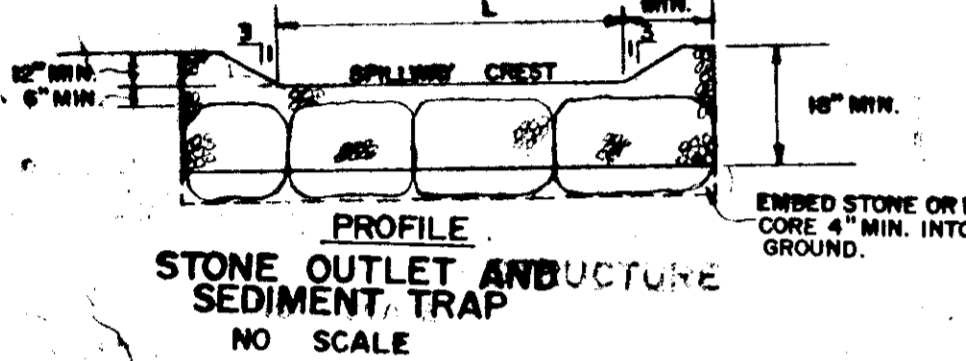
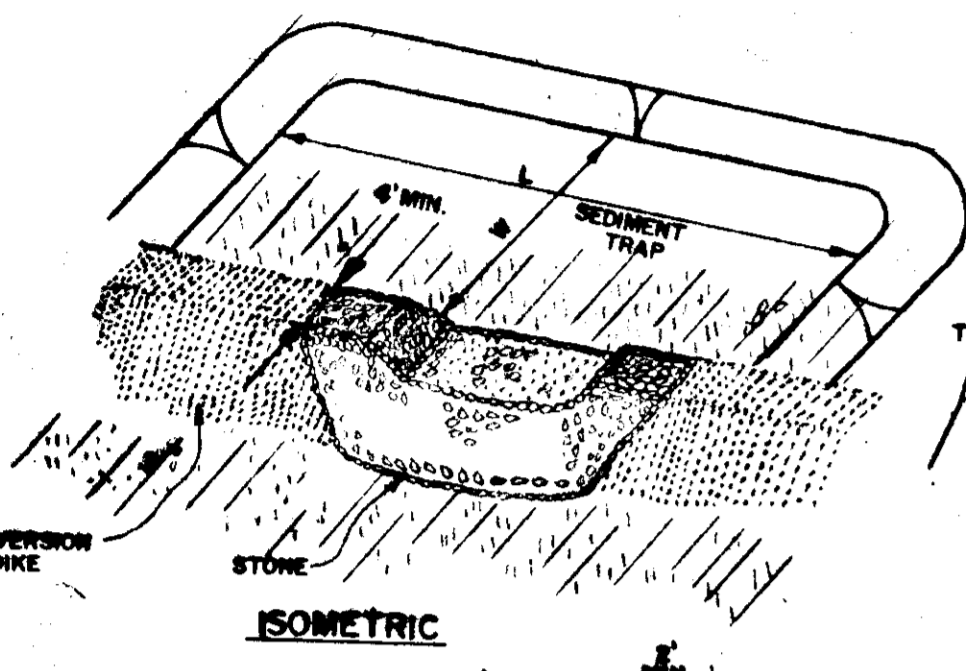
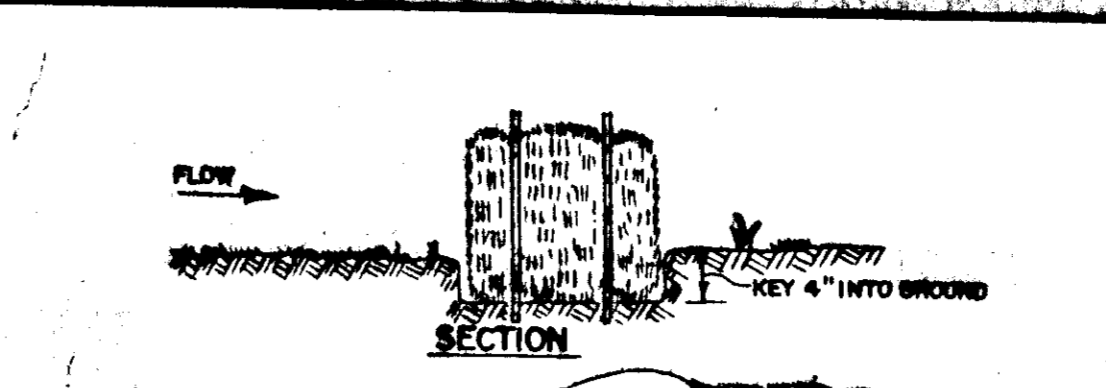
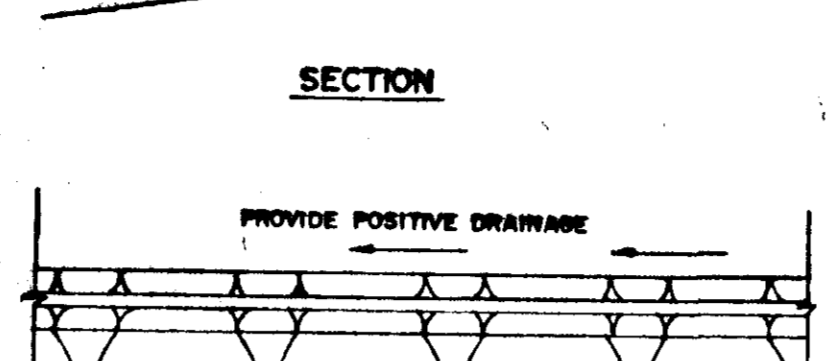
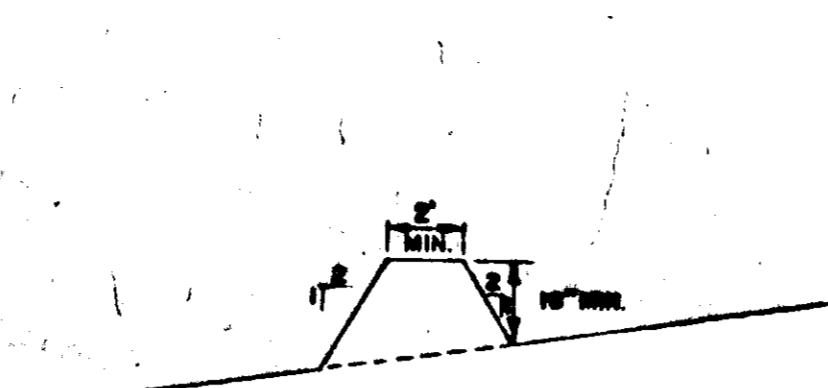
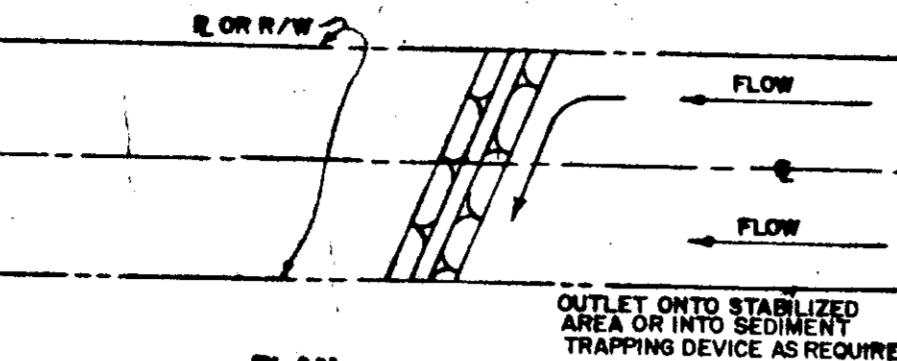
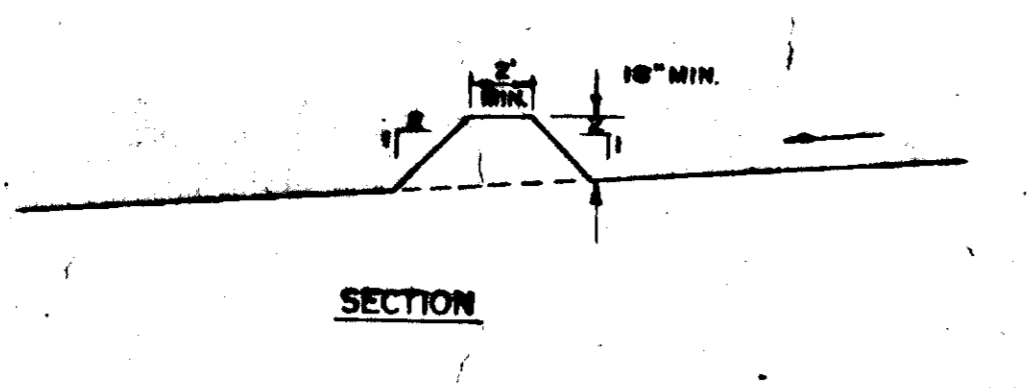
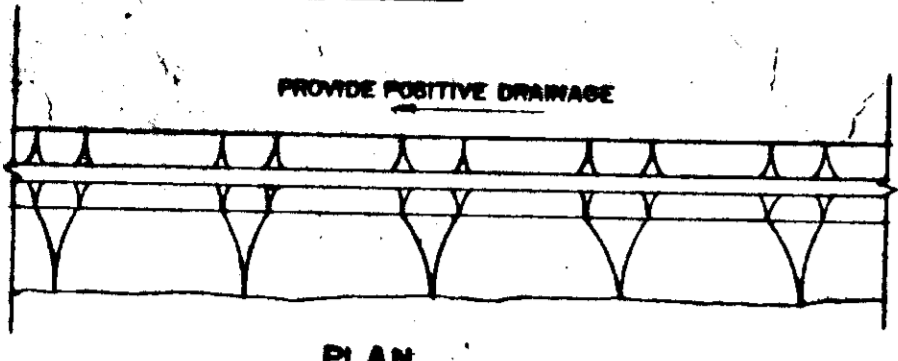
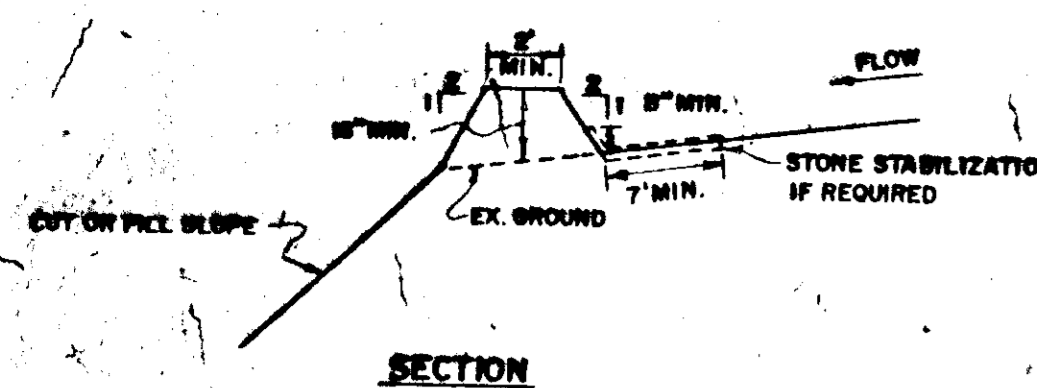
SEDIMENT CONTROL PLAN GRIMES OFFICE BUILDING. PROJECT, LOCATION, DATE, SCALE, DRAWING NO., etc.



EX. 2 STY. BRICK OFFICE BLDG.



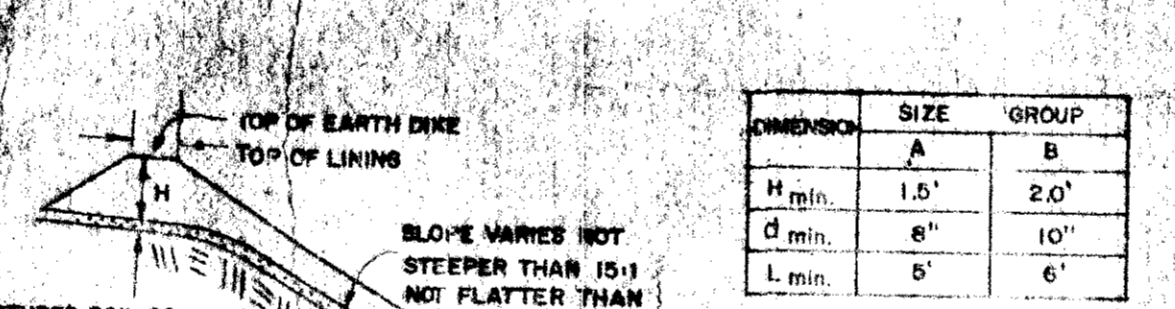
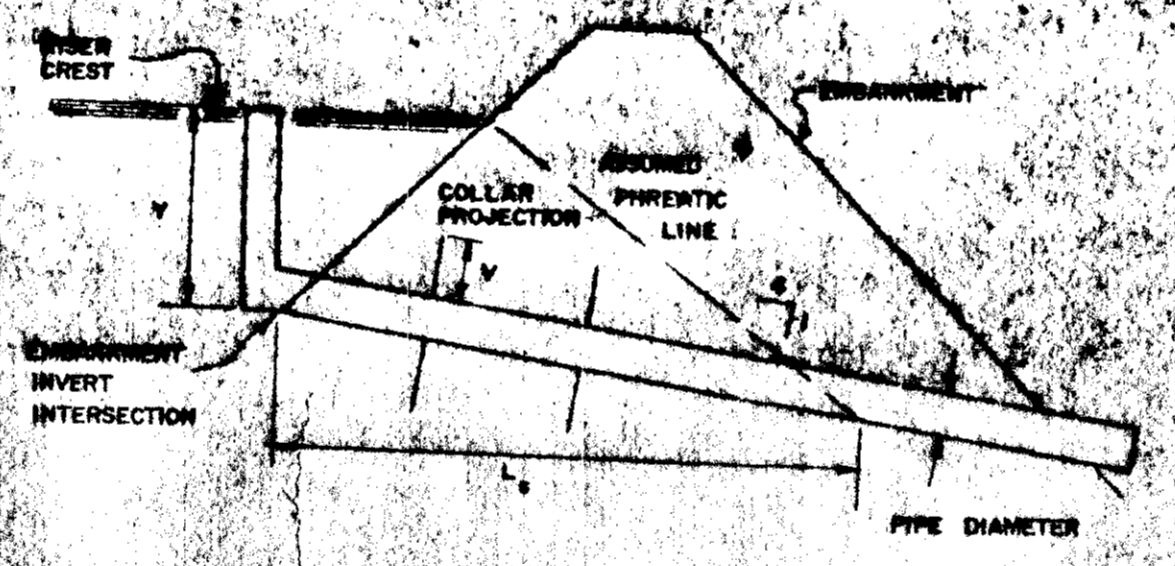
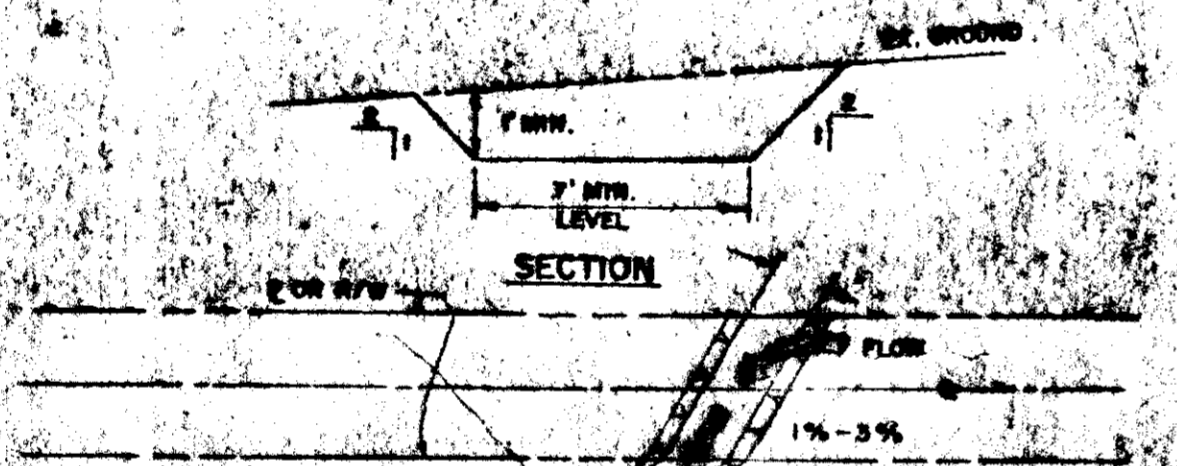
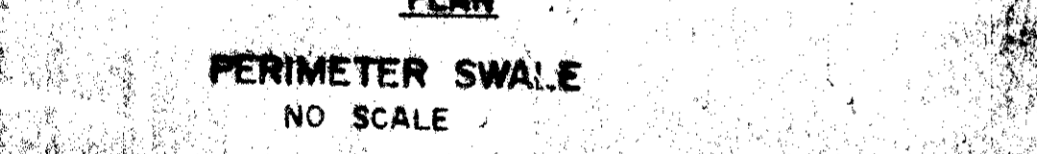
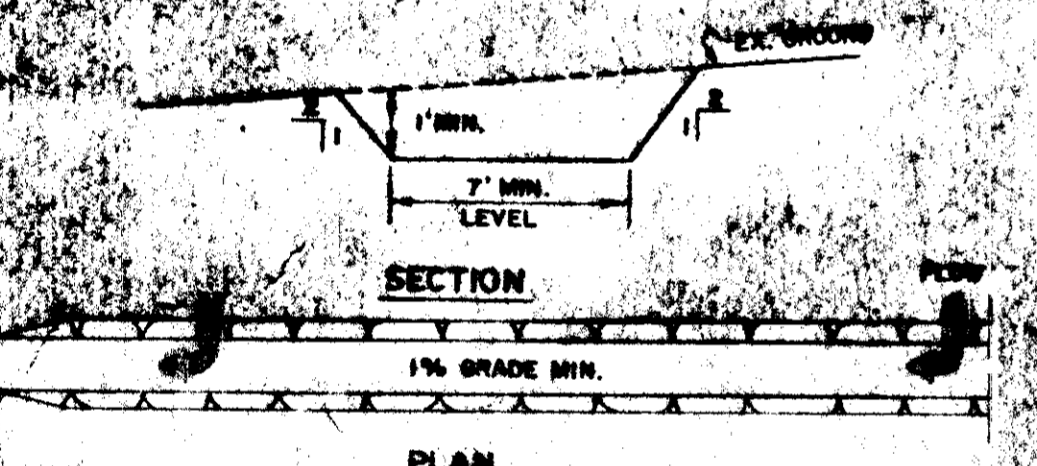
APPROVED DIVISION OF LAND DEVELOPMENT HOWARD COUNTY, MARYLAND DATE 3-9-78



APPROVED FOR PUBLIC WATER AND PUBLIC SEWERAGE SYSTEMS.
 HOWARD COUNTY HEALTH DEPARTMENT.
 COUNTY HEALTH OFFICER
 APPROVED: HOWARD COUNTY OFFICE OF PLANNING AND ZONING.
 PLANNING DIRECTOR
 APPROVED: FOR PUBLIC WATER, PUBLIC SEWERAGE AND STORM DRAINAGE SYSTEMS AND PUBLIC ROADS.
 DIRECTOR
 CHIEF BUREAU OF ENGINEERING

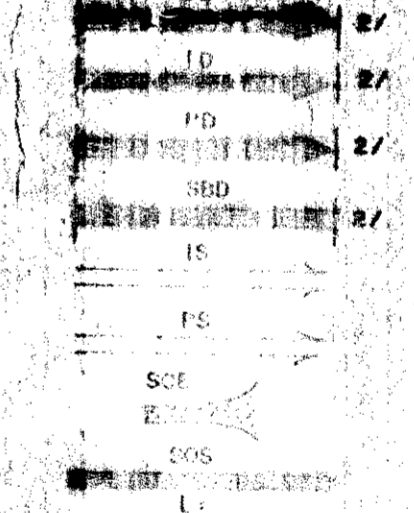
8-21-78
 8-22-78
 8-23-78
 6/24/78
 6-29-78

APPROVED
 DIVISION OF LAND DEVELOPMENT
 HOWARD COUNTY, MARYLAND
 DATE 3-9-78



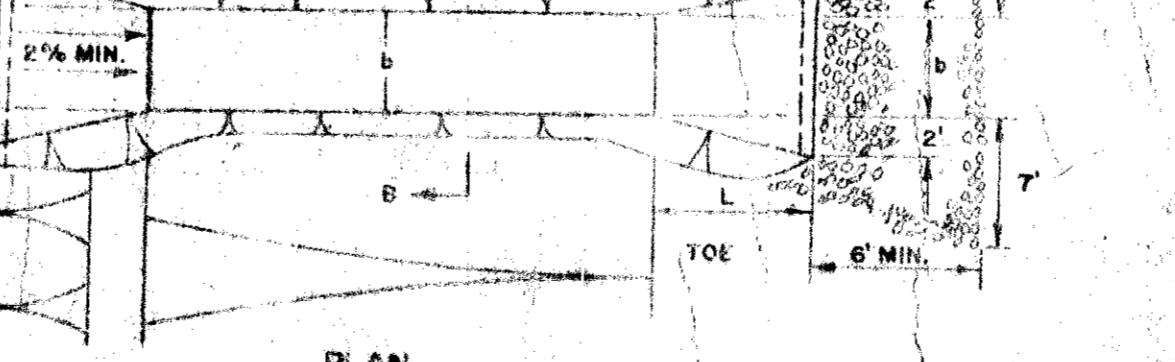
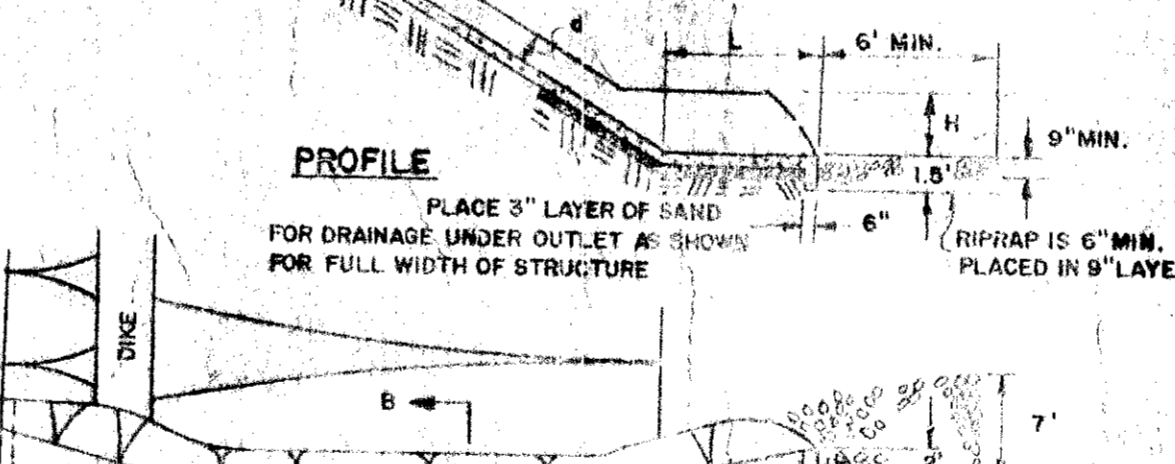
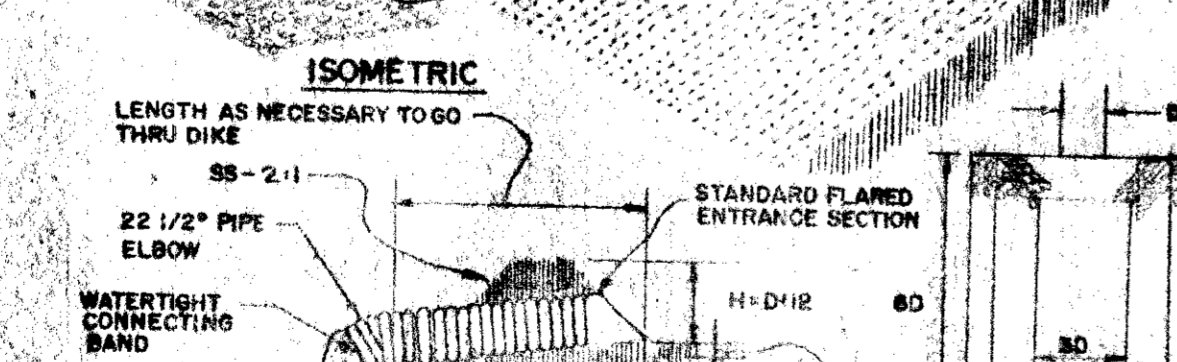
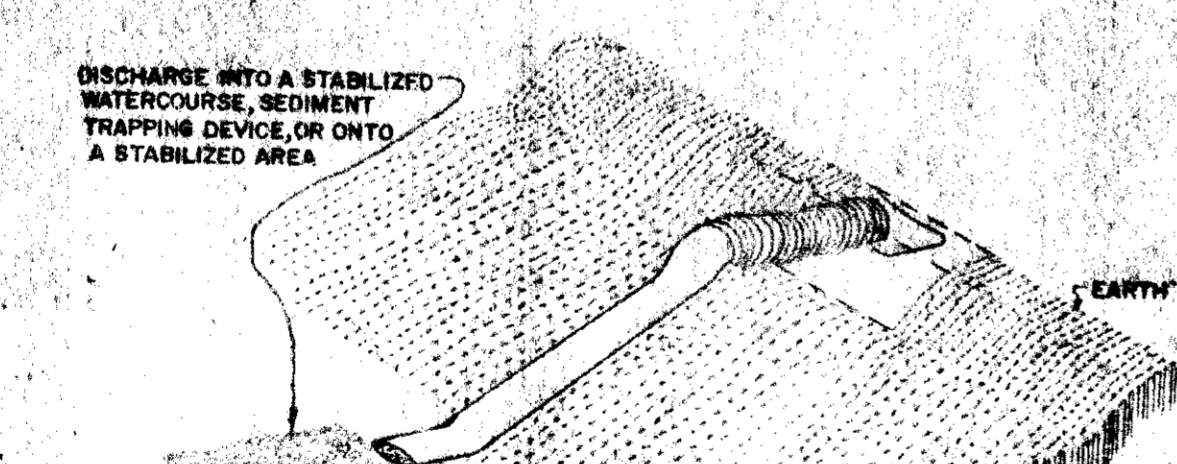
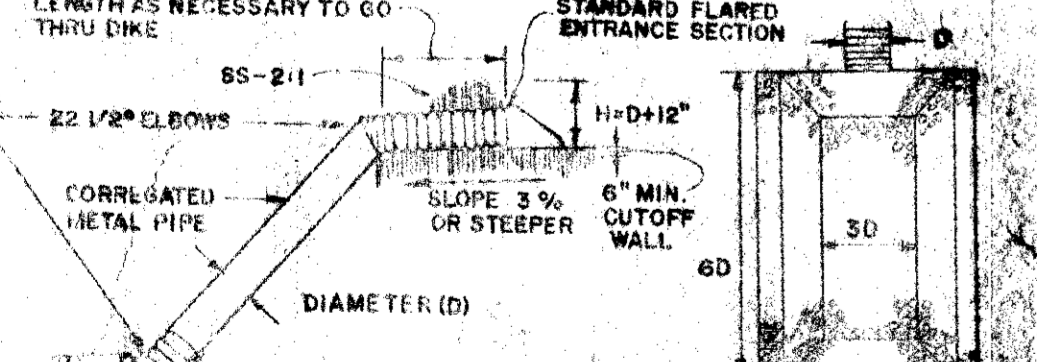
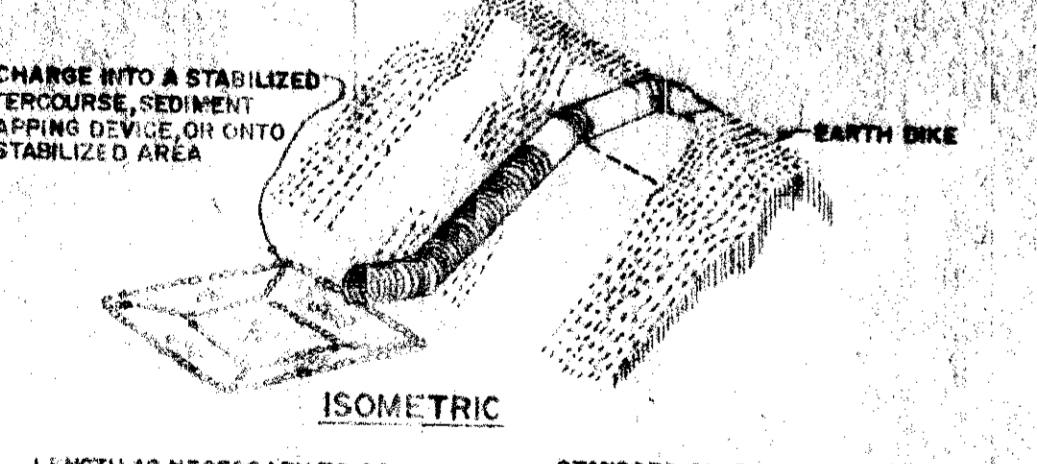
STANDARD SYMBOLS

- DIVERSION DIKE
- INTERCEPTOR DIKE
- PERIMETER DIKE
- STRAW BALE DIKE
- INTERCEPTOR SWALE
- PERIMETER SWALE
- STABILIZED CONSTRUCTION ENTRANCE
- STONE OUTLET STRUCTURE
- GRADE STABILIZATION STRUCTURE
- CHUTE OR FLUME
- RIGID PIPE SLOPE DRAIN
- FLEXIBLE PIPE SLOPE DRAIN
- DIVERSION
- GRASSED WATERWAY
- LEVEL SPREADER
- SUBSURFACE DRAIN



REVIEWED FOR HOWARD S.C.D. AND MEETS TECHNICAL REQUIREMENTS.
 U.S. SOIL CONSERVATION SERVICE
 DATE 6-14-78

THIS DEVELOPMENT IS APPROVED SOIL EROSION AND SEDIMENT CONTROL BY THE HOWARD SOIL CONSERVATION DISTRICT.
 HOWARD SOIL CONSERVATION DISTRICT
 DATE 6-14-78



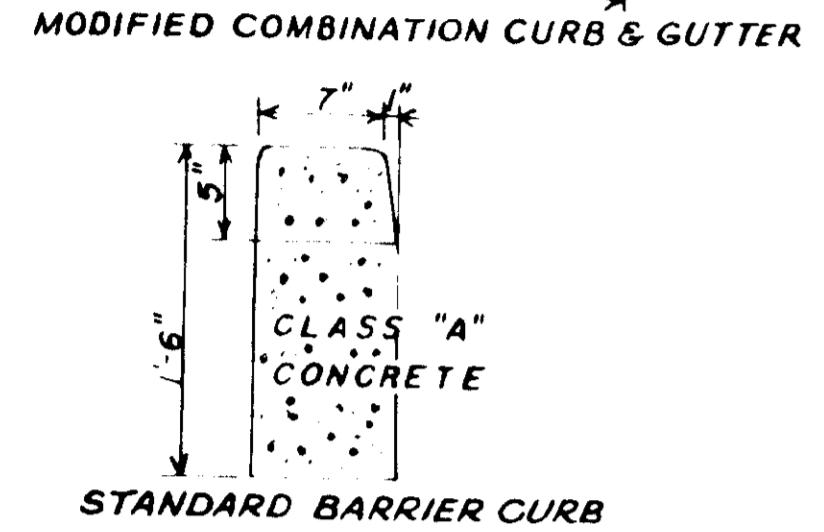
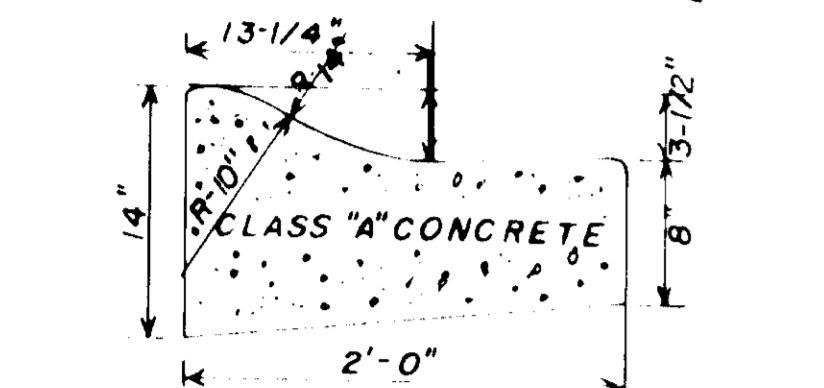
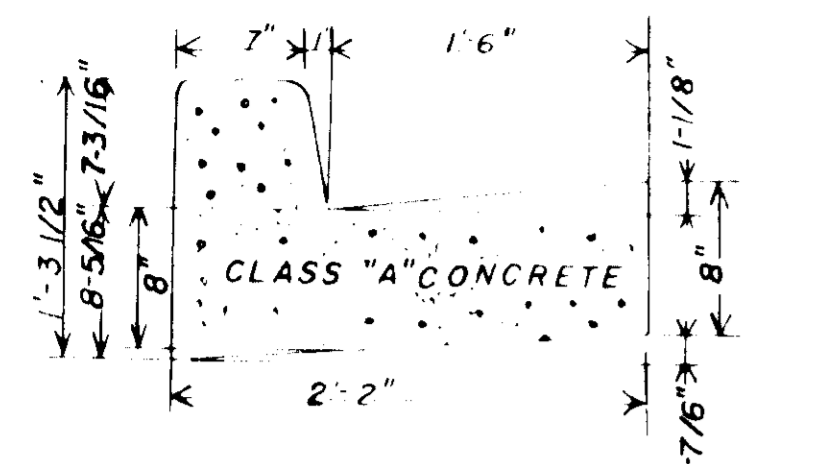
OWNER & DEVELOPER
 CHARLES FISCHER
 26 H. THOMAS GRIMES
 601 ALDERSHOT ROAD
 BALTIMORE, MD. 21228

BOENDER ASSOCIATES, INC.
 SUITE 102-107
 TOWN & COUNTRY PROFESSIONAL BLDG.
 ELLICOTT CITY, MD. 21042

SEDIMENT CONTROL DETAILS			
PROJECT	GRIMES OFFICE BUILDING		
LOCATION	7ND ELECTION DISTRICT HOWARD CO., MD.		
DATE	DEC. 1977	DES. BY	A.M.
SCALE	AS SHOWN	DRW. NO.	77-10-1
		DRW. TIT.	4 OF 13

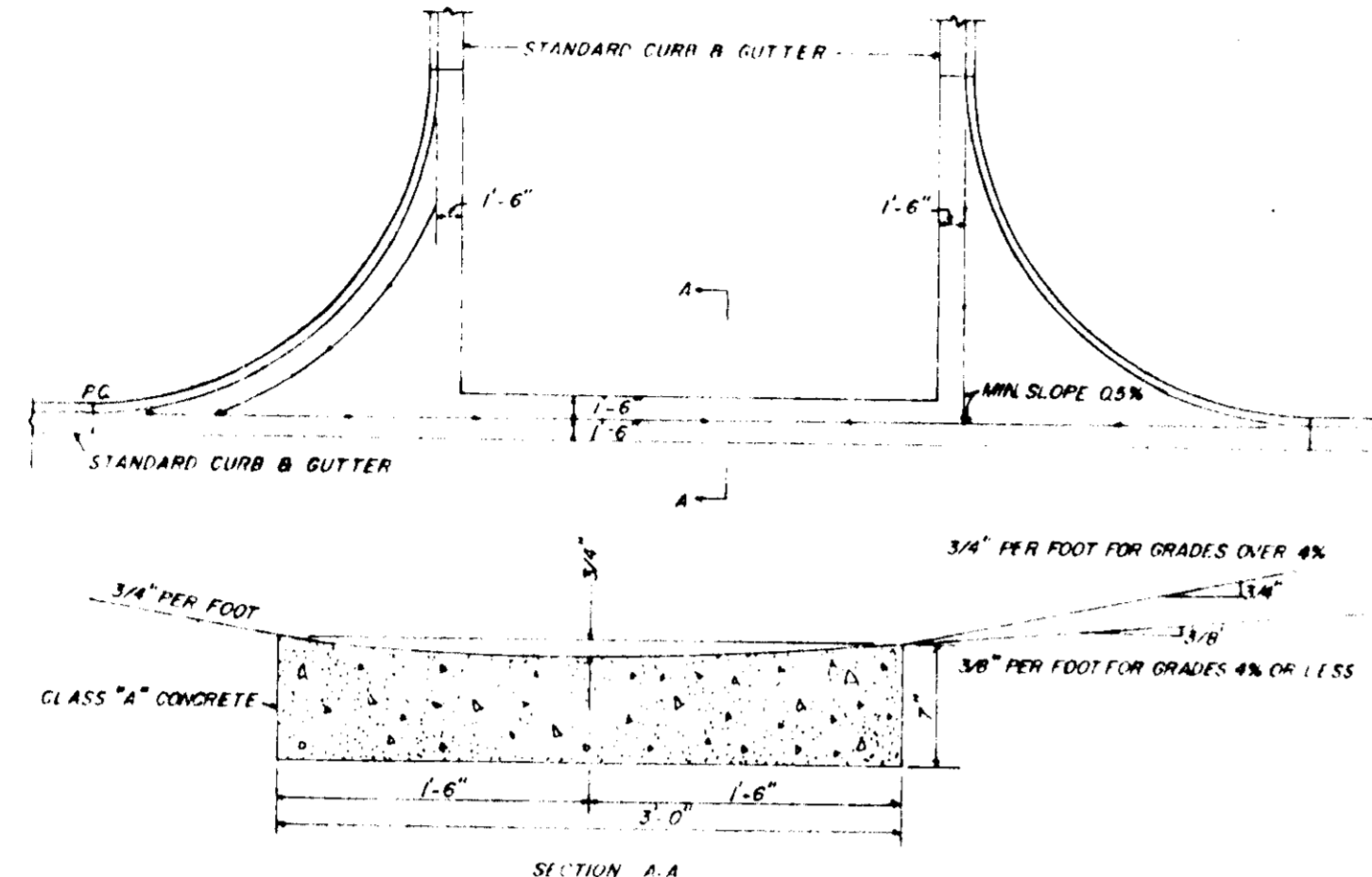
ENGINEERING
 PLANNING
 SURVEYING
 BY
BOENDER ASSOCIATES INC.
 BALTIMORE, MD. 410-7777
 BALDWIN, MD. 410-7726
 WESTMINSTER, MD. 410-5656

STANDARD 7" COMBINATION CURB & GUTTER



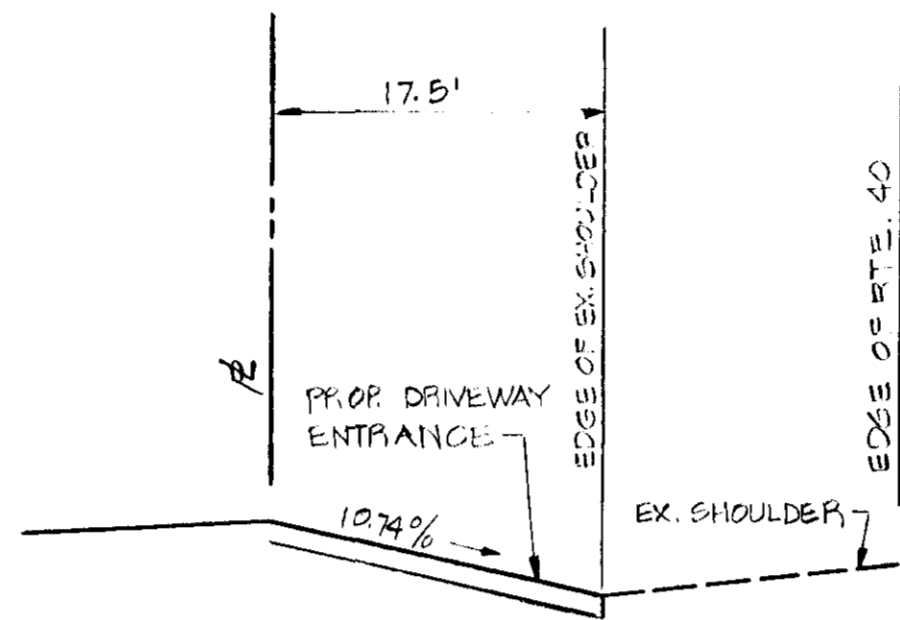
Howard County Concrete Curbs
DRAWING D-40 MAY 1968 Page 95*

DRAWING D-15 Page 70



Valley Gutter for 90° Intersection
DRAWING D-41 Page 96

DRAWING D-16 MAY 1968 Page 71



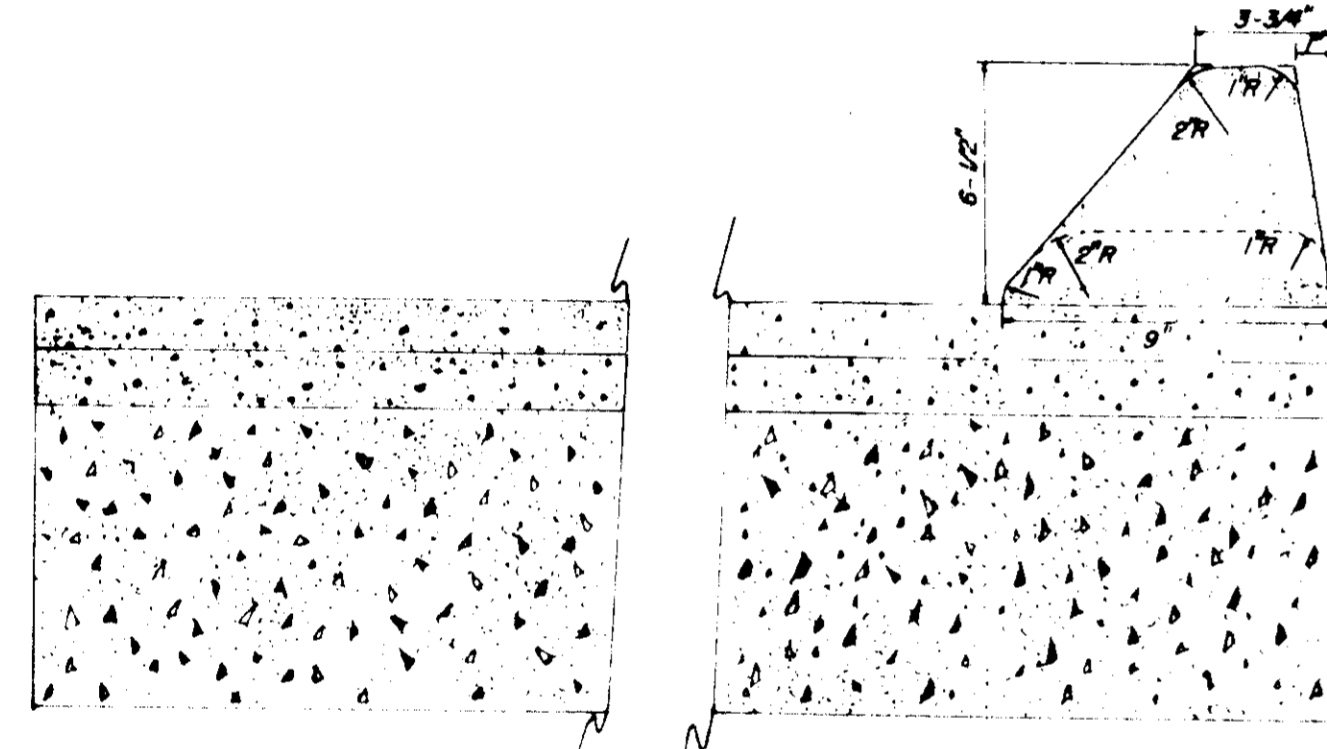
SECTION A-A
DRIVEWAY ENTRANCE TO U.S. RTE. 40
NOT TO SCALE

BITUMINOUS CONCRETE SURFACE	1"	BAND C-3
BITUMINOUS CONCRETE BINDER	2 1/2"	BAND C-2
CRUSHER RUN BASE	7"	

PRIVATE
PARKING & DRIVEWAYS PAVING
SECTION
CLEARING AND GRADING ARTICLE C-1
SUBGRADE ARTICLE C-2
BASE COURSE ARTICLE C-31 OR C-33
BINDER COURSE ARTICLE C-31 OR C-33
SURFACE COURSE ARTICLE C-31
HO. CO. DRWG. D-17, PG. 165 C

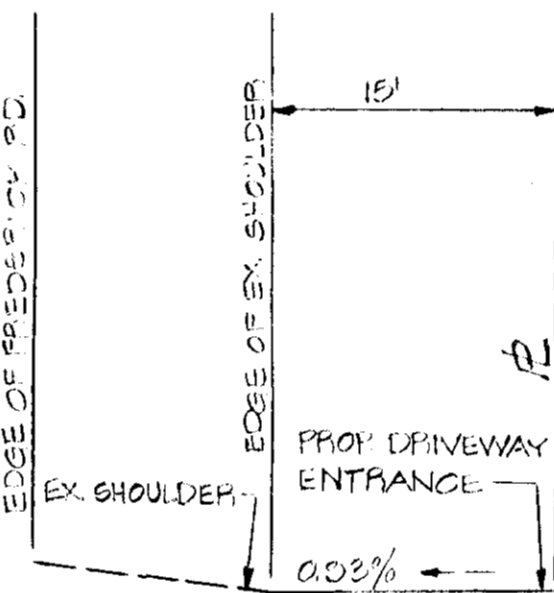
BITUMINOUS CONCRETE SURFACE	1 1/2"	BAND C-3
BITUMINOUS CONCRETE BINDER	2 1/2"	BAND C-2
CRUSHER RUN BASE	7"	

CLEARING AND GRADING ARTICLE C-1
SUBGRADE ARTICLE C-2
BASE COURSE ARTICLE C-31 OR C-33
BINDER COURSE ARTICLE C-31 OR C-33
SURFACE COURSE ARTICLE C-31
TO BE CONSTRUCTED IN ACCORDANCE WITH THE HOWARD COUNTY ROAD CONSTRUCTION CODE AND SPECIFICATIONS
DRAWING D-14 MAY 1968 Page 59



TEE TURN AROUND

DRAWING D-13 Page 57



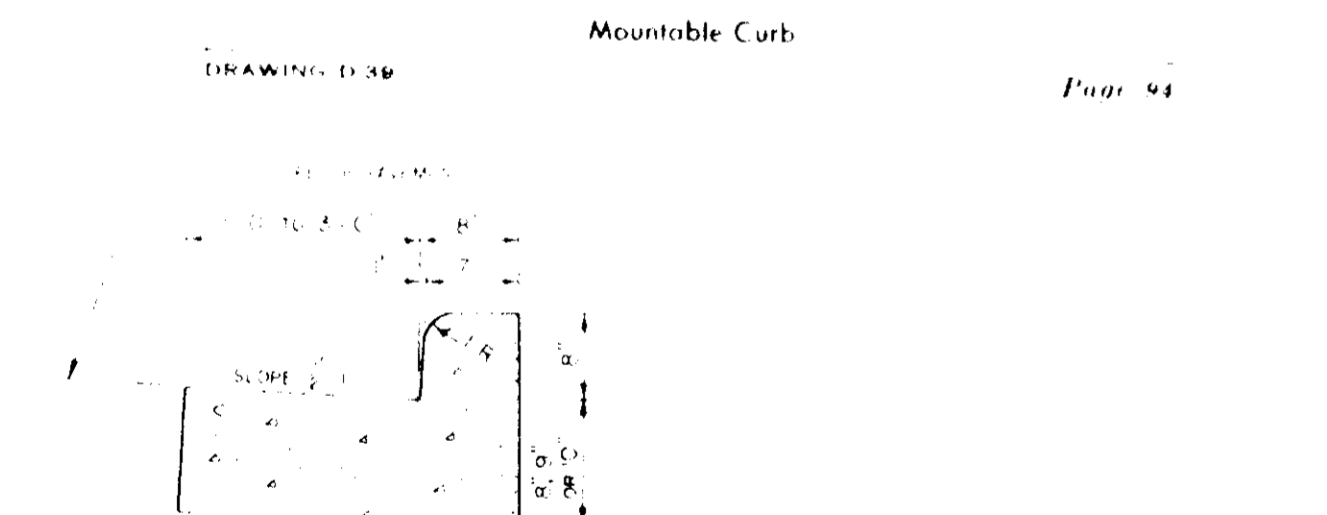
SECTION B-B
DRIVEWAY ENTRANCE TO FREDERICK RD.
NOT TO SCALE

BITUMINOUS CONCRETE SURFACE	1"	BAND C-3
BITUMINOUS CONCRETE BINDER	2 1/2"	BAND C-2
CRUSHER RUN BASE	7"	

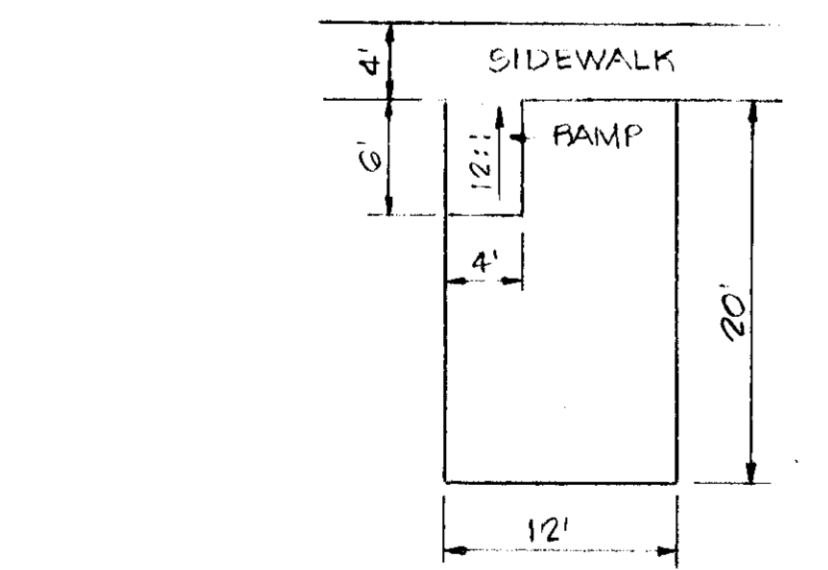
CLEARING AND GRADING ARTICLE C-1
SUBGRADE ARTICLE C-2
BASE COURSE ARTICLE C-31 OR C-33
BINDER COURSE ARTICLE C-31 OR C-33
SURFACE COURSE ARTICLE C-31
TO BE CONSTRUCTED IN ACCORDANCE WITH THE HOWARD COUNTY ROAD CONSTRUCTION CODE AND SPECIFICATIONS
DRAWING D-15 MAY 1968 Page 60

BITUMINOUS CONCRETE SURFACE	1"	BAND C-3
BITUMINOUS CONCRETE BINDER	2 1/2"	BAND C-2
CRUSHER RUN BASE	7"	

CLEARING AND GRADING ARTICLE C-1
SUBGRADE ARTICLE C-2
BASE COURSE ARTICLE C-31 OR C-33
BINDER COURSE ARTICLE C-31 OR C-33
SURFACE COURSE ARTICLE C-31
TO BE CONSTRUCTED IN ACCORDANCE WITH THE HOWARD COUNTY ROAD CONSTRUCTION CODE AND SPECIFICATIONS
DRAWING D-15 MAY 1968 Page 61



Mountable Curb
DRAWING D-18 Page 94



RAMP FOR HANDICAPPED
TO B. FROM PARKING SPACE
NOT TO SCALE

STATE OF MARYLAND
DEPARTMENT OF TRANSPORTATION
STATE HIGHWAY ADMINISTRATION
STANDARD TYPES OF CONCRETE CURB
COMBINATION CONCRETE CURB & GUTTER
STANDARD NO. MD-620-02

APPROVED FOR PUBLIC WATER AND PUBLIC SEWERAGE SYSTEMS,
HOWARD COUNTY HEALTH DEPARTMENT
Robert F. Wain 8-21-78
COUNTY HEALTH OFFICER DATE
APPROVED HOWARD COUNTY OFFICE OF PLANNING AND ZONING
John W. Musselman 8-22-78
PLANNING DIRECTOR DATE
APPROVED FOR PUBLIC WATER, PUBLIC SEWERAGE AND STORM
DRAINAGE SYSTEMS AND PUBLIC ROADS
Richard E. Sreudenberg 6/29/78
DATE
CHIEF, BUREAU OF ENGINEERING

BOENDER ASSOCIATES, INC.
SUITE 102-107
TOWN & COUNTRY PROFESSIONAL BLDG.
ELLICOTT CITY, MD 21042



Rodolph M. ...

OWNER & DEVELOPER
CHARLES FISCHER
% H. THOMAS GRIMES
601 ALDERSHOT ROAD
BALTIMORE, MARYLAND 21228

ROAD CONSTRUCTION DETAILS			
GRIMES OFFICE BUILDING			
DATE	DESIGN BY	DRAWN BY	CHECKED BY
DEC, 1977	W.H.N.	W.H.N.	R.L.A.
SCALE	JOB NO.	DRAWING NO.	SUB-NO.
NONE	77184	5 OF 5	SUB-78-07
boender associates		engineers	
8720 TOWN & COUNTRY BLVD.		surveyors	
ELLICOTT CITY, MD 21042		planner	
BALTIMORE 301 463-7177		Baltimore 301 449-1206	