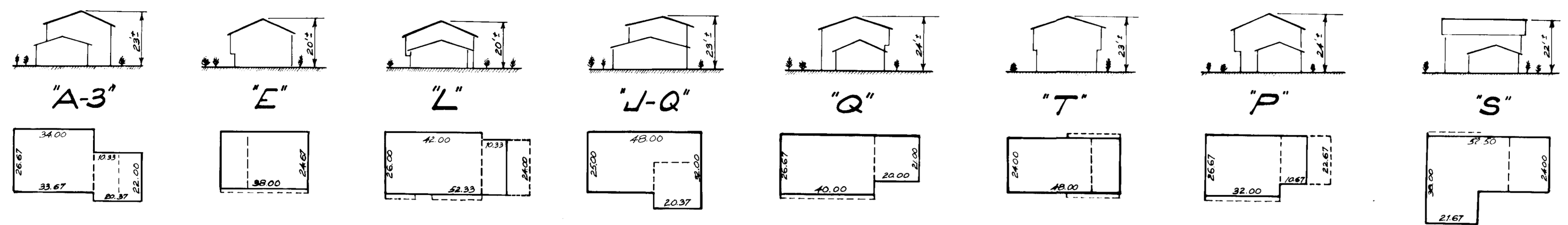


**TYPICAL HOUSES**  
No Scale



**GENERAL NOTES**

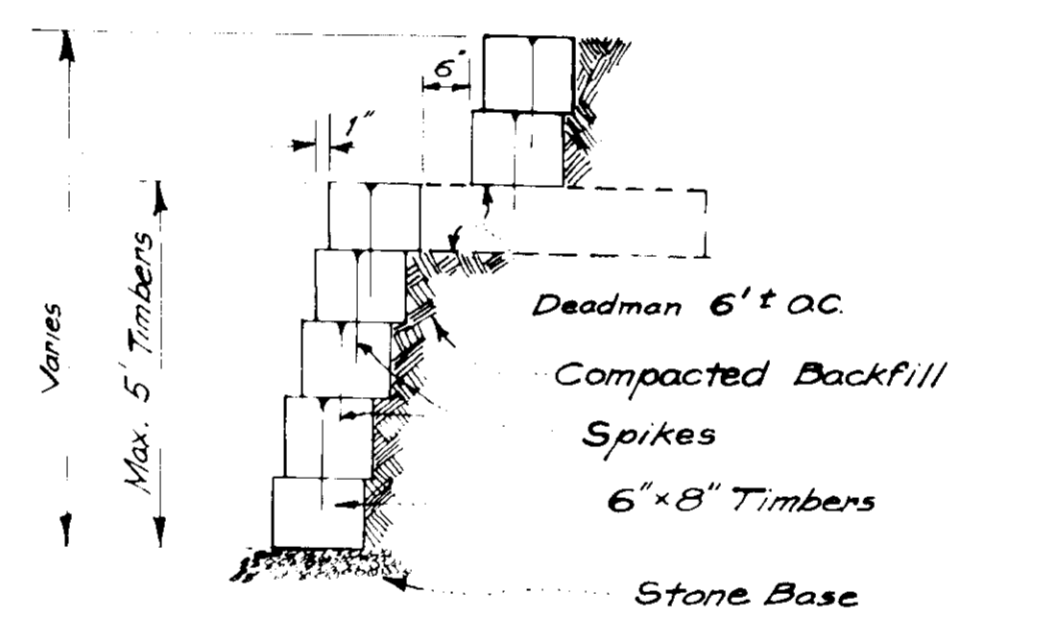
1. The Land Included in this Plan is zoned New Town (S.F.M.D.).
2. The Lots shown on this Plan are covered by Final Development Plan Phase 14B, recorded in Plat Book 2B, Folios 70 to 79.
3. All Coordinates are based on Maryland State Grid System. Elevations are based on U.S. Coast & Geodetic Survey Mean Sea Level Datum of 1929.
4. The Area covered in this submission is located on Tax Map No. 42.
5. The total Area included in this Plan is 1.630 Acres.
6. Cape Ann Drive is Public and Existing.
7. Any Damage to County-Owned Rights-of-Way or Paving shall be corrected at the developer's expense.
8. Cotton Mill Road & Cambric Court are Public & Existing

**SURVEYOR'S CERTIFICATION**

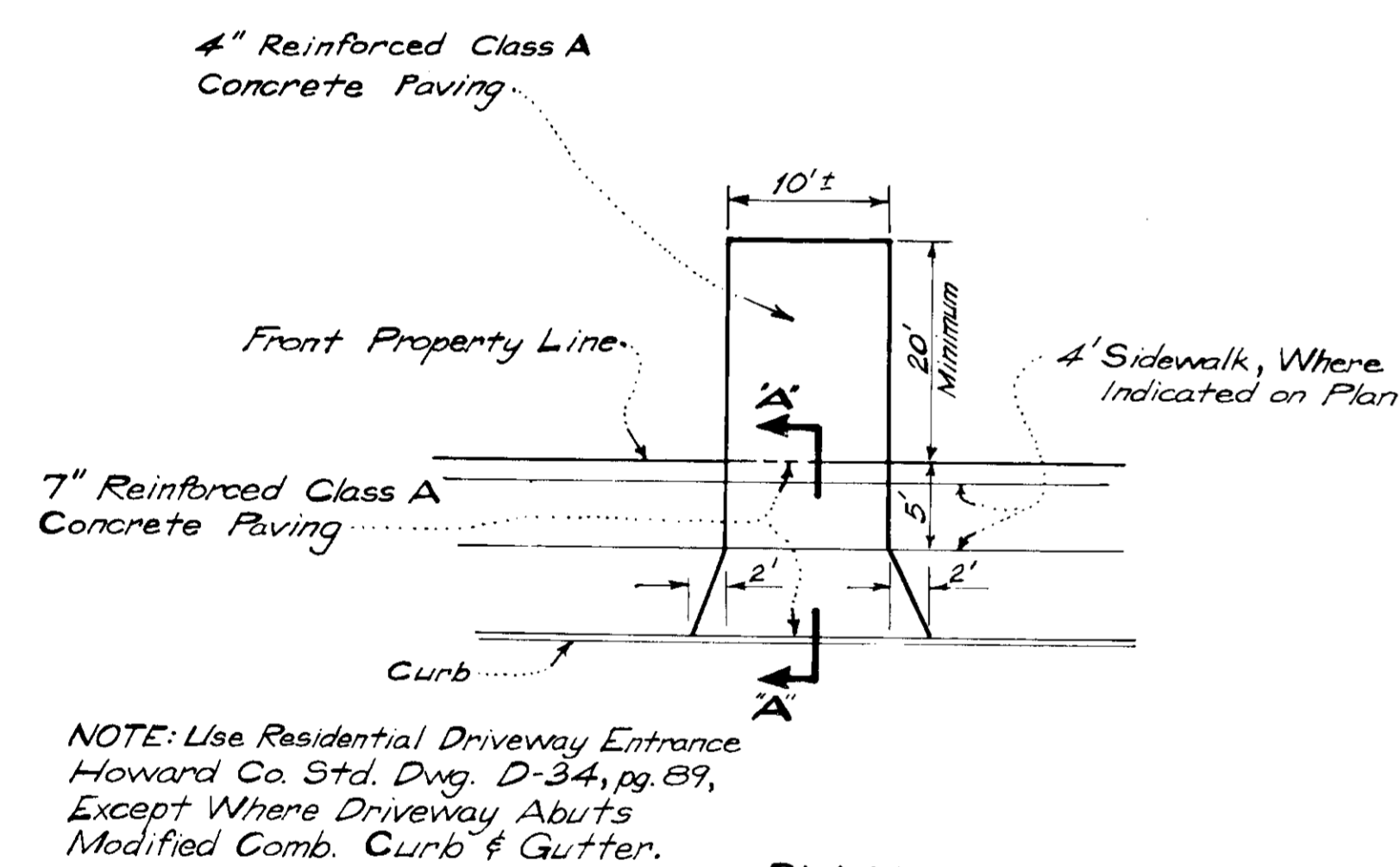
I hereby certify that the information contained hereon is the same as shown on previously approved SDP 78-16C, with the following exceptions:

1. House types & grading have been revised on Lots 107, 110, 111, 112, 113, 119 and 131.

I further certify that the Sediment & Erosion Control measures as previously approved will not be affected, the grading is substantially the same as originally approved, the building setbacks comply with FDP Phase 14B, and the lots have the same geometric configuration as shown on the respective recorded subdivision plat.

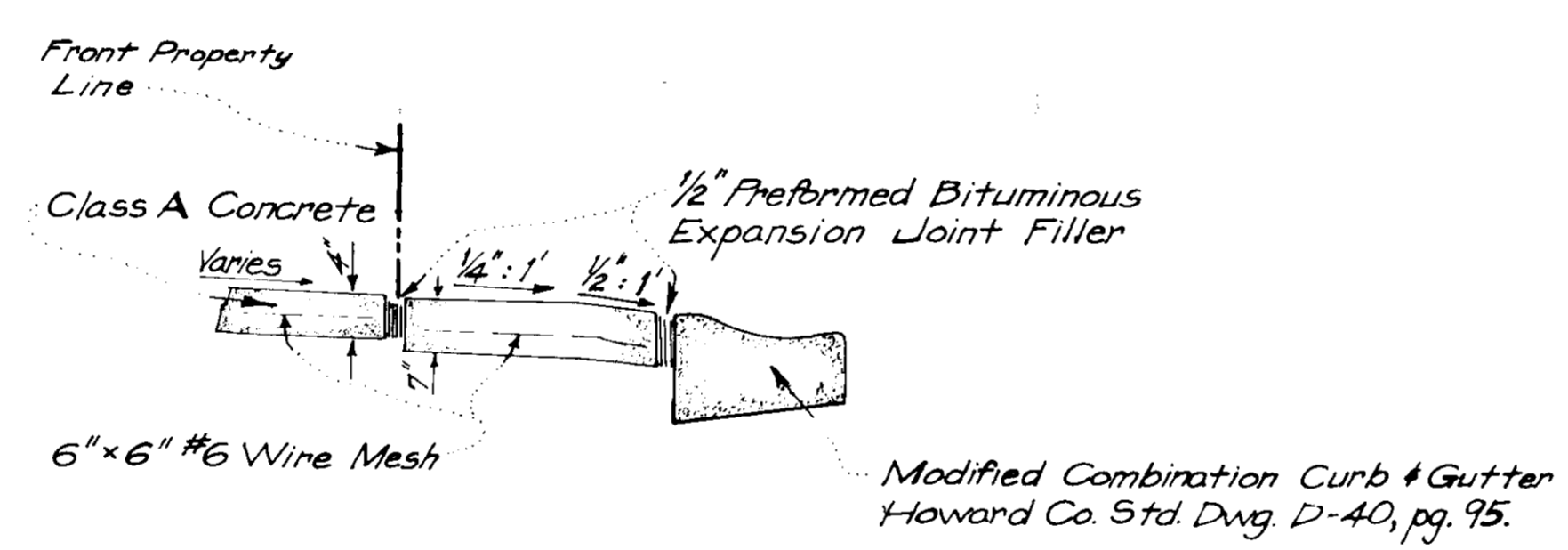


**TIMBER RETAINING WALL**  
No Scale



NOTE: Use Residential Driveway Entrance Howard Co. Std. Dwg. D-34, pg. 89, Except Where Driveway Abuts Modified Comb. Curb & Gutter.

**PLAN**



NOTE: All Materials and Construction Shall Be in Accordance with Howard Co. Road Construction Code.

**SECTION "A-A"**

**DRIVEWAY ABUTTING MODIFIED COMB. CURB & GUTTER**  
No Scale

APPROVED FOR PUBLIC WATER AND PUBLIC SEWERAGE SYSTEMS, HOWARD COUNTY HEALTH DEPARTMENT  
*Joseph Bondens*  
 COUNTY HEALTH OFFICER  
 DATE: 5-11-78

APPROVED HOWARD COUNTY OFFICE OF PLANNING & ZONING  
 PLANNING DIRECTOR  
 DATE: 5-11-78

CHIEF DIVISION OF LAND DEVELOPMENT  
 DATE: 5-11-78

APPROVED FOR PUBLIC WATER AND PUBLIC SEWERAGE, STORM DRAINAGE SYSTEMS AND PUBLIC ROADS, HOWARD COUNTY DEPARTMENT OF PUBLIC WORKS  
*R.E. Mendenhall*  
 DIRECTOR  
 DATE: 5-9-78

CHIEF BUREAU OF ENGINEERING  
 DATE: 5-11-78

APPROVED  
 DIVISION OF LAND DEVELOPMENT  
 HOWARD COUNTY, MARYLAND  
 DATE: 1-4-78

12-2-77  
 Date  
*Donald B. Sackett*  
 Donald B. Sackett  
 Registered Land Surveyor  
 Md. No. 6059

NOTE: For Bearings & Distances of Individual Lots See Record Plat Recorded as Plat 3579.

CLARK • FINEROCK & SACKETT  
 ENGINEERS • PLANNERS • SURVEYORS  
 11700 WOOD DRIVE SILVER SPRING, MARYLAND 20904 (301) 593-3400

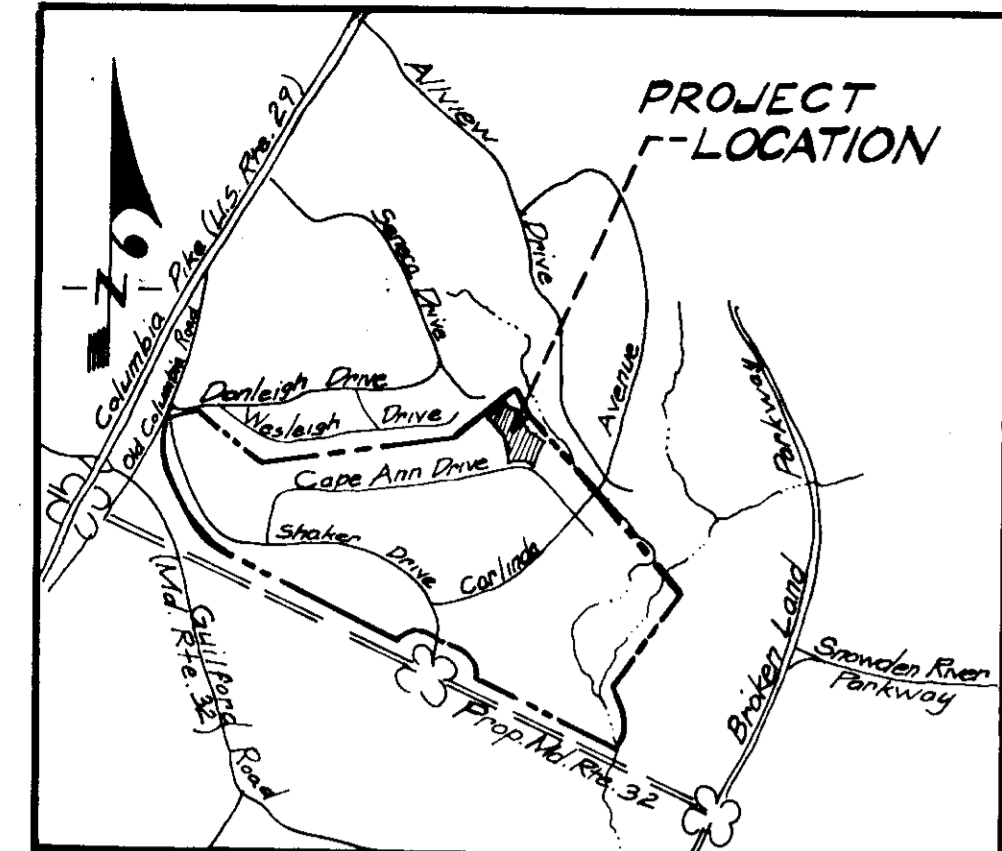
DESIGNED: D.R.H. REVISED SITE DEVELOPMENT PLAN LOTS 107, 110 thru 113, 119 and 131 SCALE: 1"=30'

DRAWN: D.R.H. COLUMBIA DRAWING: 1 of 2

CHECKED: D.B.S. VILLAGE OF KINGS CONTRIVANCE SECTION 1 AREA 1 JOB NO.

DATE: Nov., 1977 FOR: WASHINGTON HOMES, INC. 6th ELECTION DISTRICT HOWARD COUNTY, MARYLAND FILE NO. 1234-XA

(7 Lots) Longreach Village Center, 8775 Cloudeap Ct. Columbia, Maryland 21045



VICINITY MAP  
Scale: 1"=2000'

**LEGEND**

- 1. Contour Interval 2 Feet
- 2. Existing Contour
- 3. Proposed Contour
- 4. Spot Elevation +89±
- 5. Direction of Drainage
- 6. Existing Trees to be Retained
- 7. Yard Requirements:  
Front: 20 Ft. on 50 Ft. wide street  
30 Ft. on 60 Ft. wide street  
Side: 7.5 Ft. (Min.)
- 8. Timber Retaining Wall
- 9. Walk-Out Basement
- 10. 100-Year Flood Plain Elevation \* 286.3



**GENERAL NOTES**

- 1. Land in this plan is zoned New Town (S.F.M.D.). Lots covered by Final Development Plan Phase 1A, recorded in Plat Book 2B, Folios 70 to 79.
- 2. Total Area in this plan is 1.630 acres.
- 3. Total number of lots: 7.

APPROVED FOR PUBLIC WATER AND PUBLIC SEWERAGE SYSTEMS, HOWARD COUNTY HEALTH DEPARTMENT  
*J. M. ...* 5-11-78  
 COUNTY HEALTH OFFICER DATE

APPROVED FOR PUBLIC WATER AND PUBLIC SEWERAGE SYSTEMS, HOWARD COUNTY DEPARTMENT OF PUBLIC WORKS  
*R. L. ...* 5-9-78  
 DIRECTOR DATE

APPROVED FOR PUBLIC WATER AND PUBLIC SEWERAGE SYSTEMS, HOWARD COUNTY DEPARTMENT OF PUBLIC WORKS  
*...* 5-9-78  
 CHIEF BUREAU OF ENGINEERING DATE

PLANNING DIRECTOR DATE

CHIEF DIVISION OF LAND DEVELOPMENT DATE

APPROVED  
 DIVISION OF LAND DEVELOPMENT  
 HOWARD COUNTY, MARYLAND  
 DATE 1-4-78

**CLARK • FINEFROCK & SACKETT**  
 ENGINEERS • PLANNERS • SURVEYORS  
 1111 LOCKWOOD DRIVE SILVER SPRING, MARYLAND 20904 (301) 593-3400

DESIGNED BY D.R.H. REVISED SITE DEVELOPMENT PLAN LOTS 107, 110 THRU 113, 119 # 131  
 DRAWN BY D.R.H. COLUMBIA VILLAGE OF KINGS CONTRIVANCE SECTION 1 AREA 1  
 CHECKED BY C.B.S. 6TH ELECTION DISTRICT HOWARD COUNTY, MARYLAND  
 DATE FOR: WASHINGTON HOMES, INC. Longreach, Village Center, 8775 Cloud Leap Ct. Columbia, Maryland 21045 (7 Lots) Nov, 1977

SCALE 1"=30'  
 DRAWING 2 of 2  
 JOB NO.  
 FILE NO. 1284-X