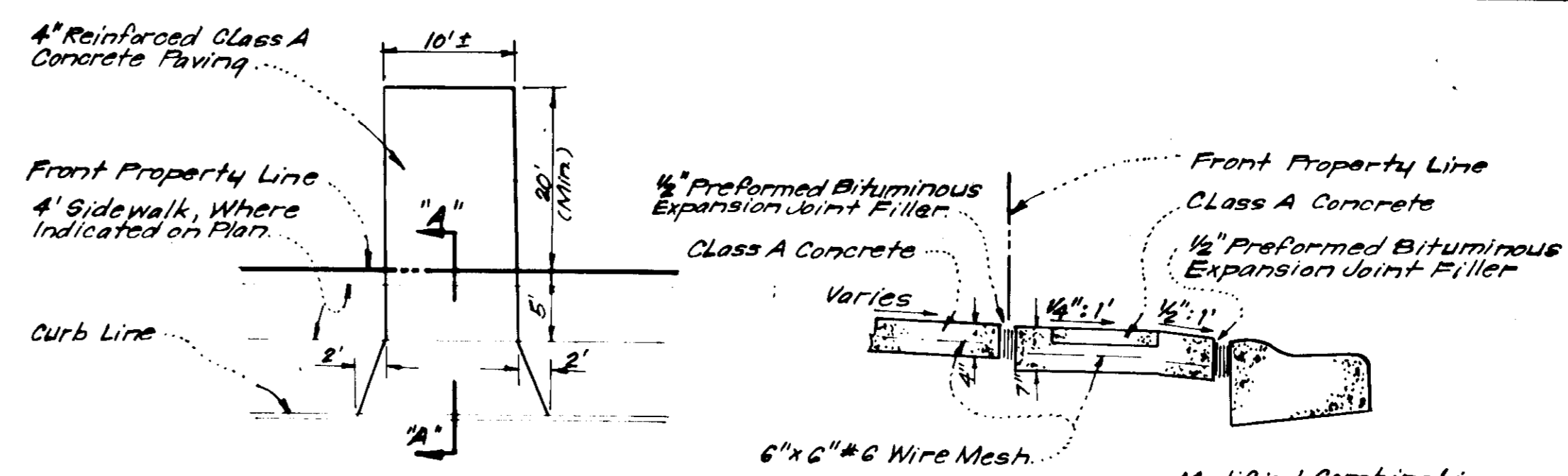


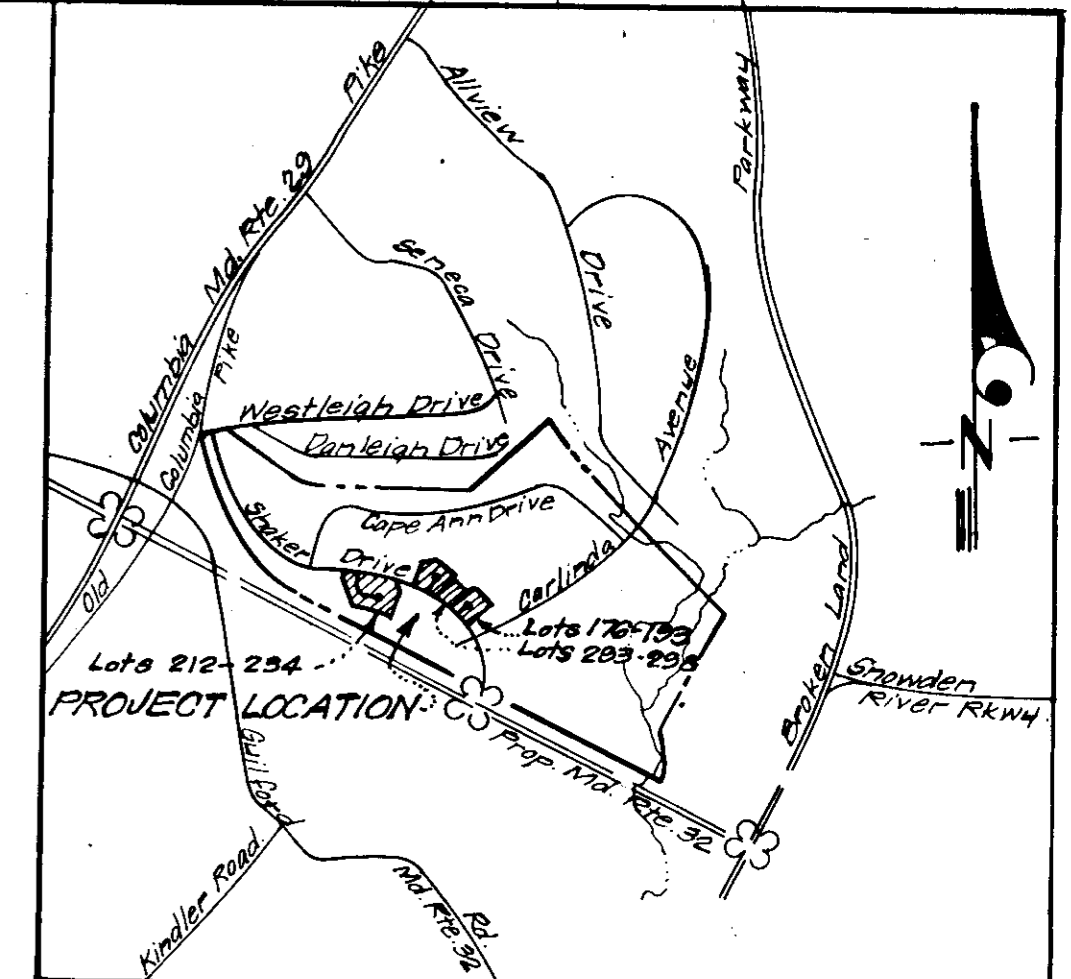
TYPICAL HOUSES
No Scale



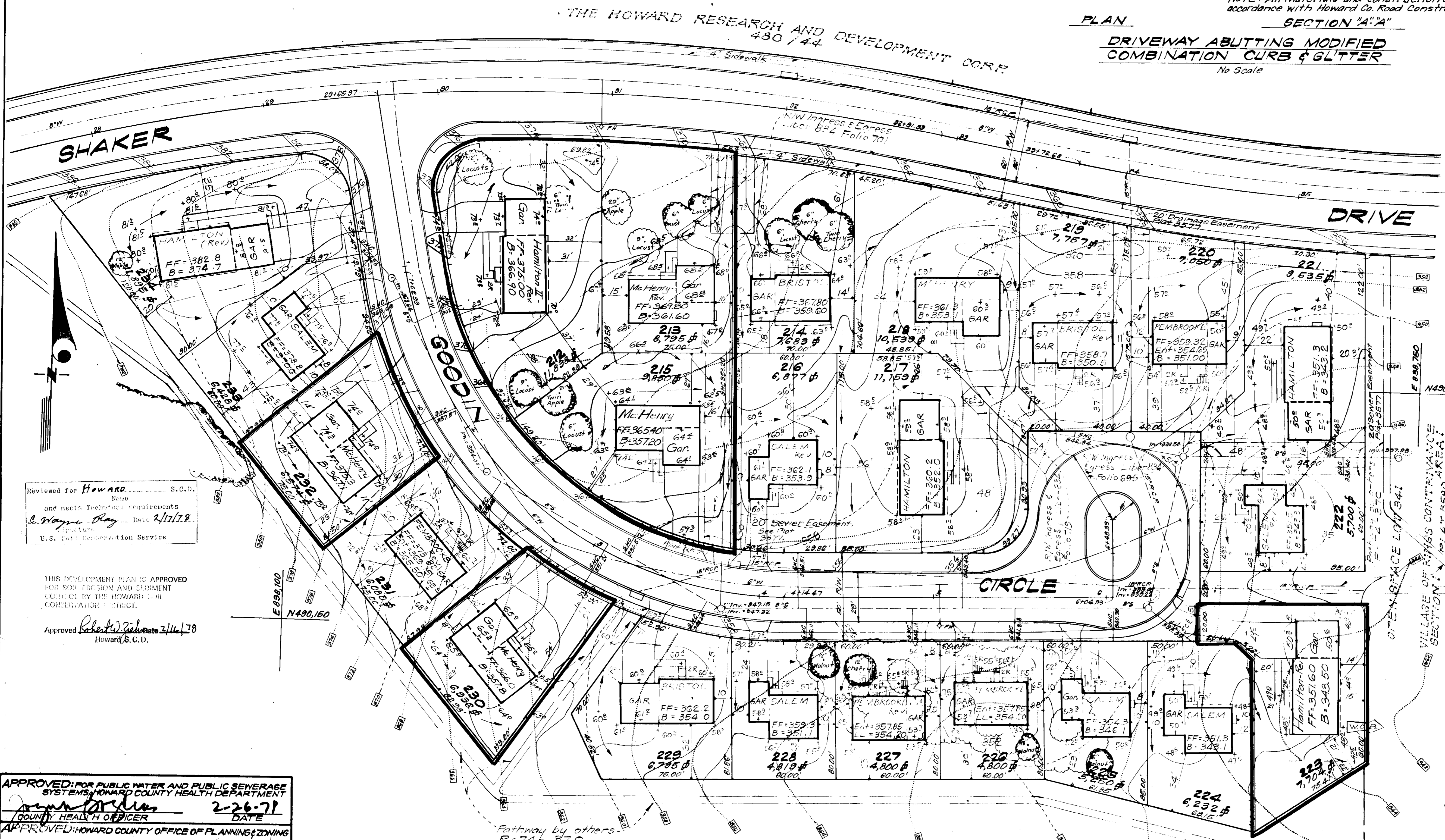
NOTE: Use Residential Driveway Entrance Howard Co. Std Dwg. D-34, pg. 83, except where driveway abuts Modified Comb. curb & gutter.

NOTE: All Materials and Construction shall be in accordance with Howard Co. Road Construction Code.

PLAN
SECTION "A-A"
DRIVEWAY ABUTTING MODIFIED COMBINATION CURB & GUTTER
No Scale



VICINITY MAP
Scale: 1"=2000'



LEGEND

1. Contour Interval 2 Ft.
2. Existing Contour
3. Proposed Contour
4. Spot Elevation +50.5
5. Direction of Drainage
6. Existing Trees to be Retained
7. Yard Requirements: Front: 20' on 50' Wide Street
50' on 60' Wide Street
side: 7.5' (Min.)
8. Timber Retaining Wall
9. Walk Out Basement

GENERAL NOTES

1. The Land Included in this Plan is zoned New Town (S.F.M.D.)
2. The Lots shown on this Plan are covered by Final Development Plan Phase 148 recorded in Plat Book 28, Folios 70 to 79
3. All Coordinates are based on Maryland State Grid System. Elevations are based on U.S. Coast and Geodetic Survey Mean Sea Level of 1929
4. The Area covered in this submission is located on Tax Map 42.
5. The total Area included in this Plan is 1379 Acres.
6. All Roadways are Public and Existing.
7. Any damage to county owned Right of Ways or Paving shall be corrected at the developer's expense.

SURVEYOR'S CERTIFICATION

I hereby certify that the information contained herein is the same as shown on the previously approved SDP-77-100-C, with the following exceptions:

1. House types & grading have been revised on Lots 212, 215, 223, 230 & 232.

I further certify that the Sediment & Erosion Control measures as previously approved, will not be affected, the grading is substantially the same as originally approved, the building setbacks comply with 201 Phase 74c, and the lots have the same geometric configuration on the respective recorded subdivision plat.

12/1/77
DATE

Donald B. Sackett
DONALD B. SACKETT
Registered Land Surveyor
Md. No. 6059

NOTE: For Bearings and distances of individual lot lines See Record Plat recorded as Plat 3577, 3578 & 3579

Reviewed for HOWARD COUNTY S.C.D. Name and needs Technical Requirements by *C. Wayne Ray* Date 2/11/78 U.S. Fish Conservation Service

THIS DEVELOPMENT PLAN IS APPROVED FOR SET DESIGN AND EASEMENT LOC. BY THE HOWARD COUNTY CONSERVATION DISTRICT.
Approved *Robert J. Roberts* 2/11/78 Howard Co. D.

APPROVED FOR PUBLIC WATER AND PUBLIC SEWERAGE SYSTEMS, HOWARD COUNTY HEALTH DEPARTMENT
John J. ... 2-26-78
COUNTY HEALTH OFFICER DATE

APPROVED: HOWARD COUNTY OFFICE OF PLANNING & ZONING
PLANNING DIRECTOR DATE
CHIEF DIVISION OF LAND DEVELOPMENT DATE

APPROVED FOR PUBLIC WATER AND PUBLIC SEWERAGE, STORM DRAINAGE SYSTEMS AND PUBLIC ROADS HOWARD COUNTY DEPARTMENT OF PUBLIC WORKS
W. ... 2-23-78
DIRECTOR DATE
CHIEF BUREAU OF ENGINEERING DATE

VILLAGE OF KINGS CONTRIVANCE AREA
SECTION 1
PLAT 3577
OPEN SPACE LOT 341

1-3-78

(7/10)

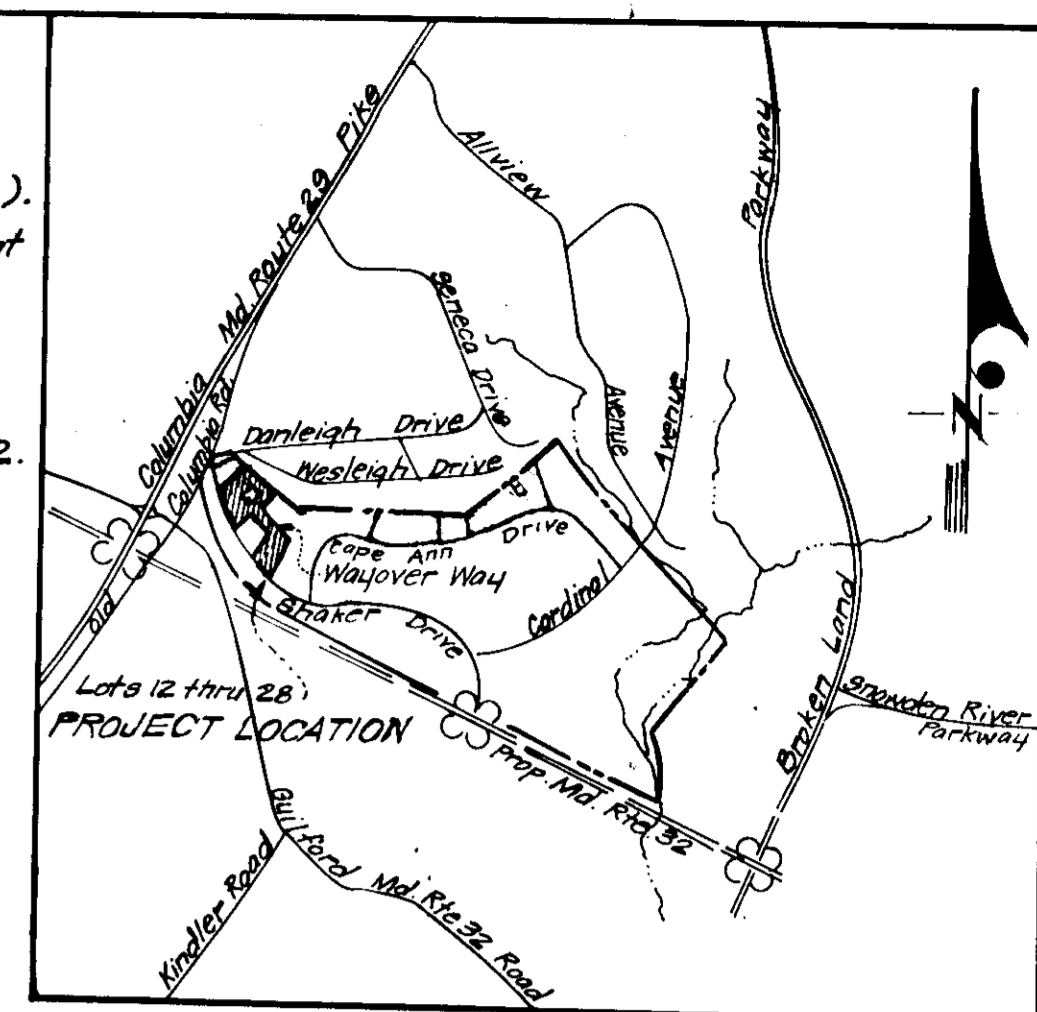
SDP-78-58c See Also: HO-908

LEGEND

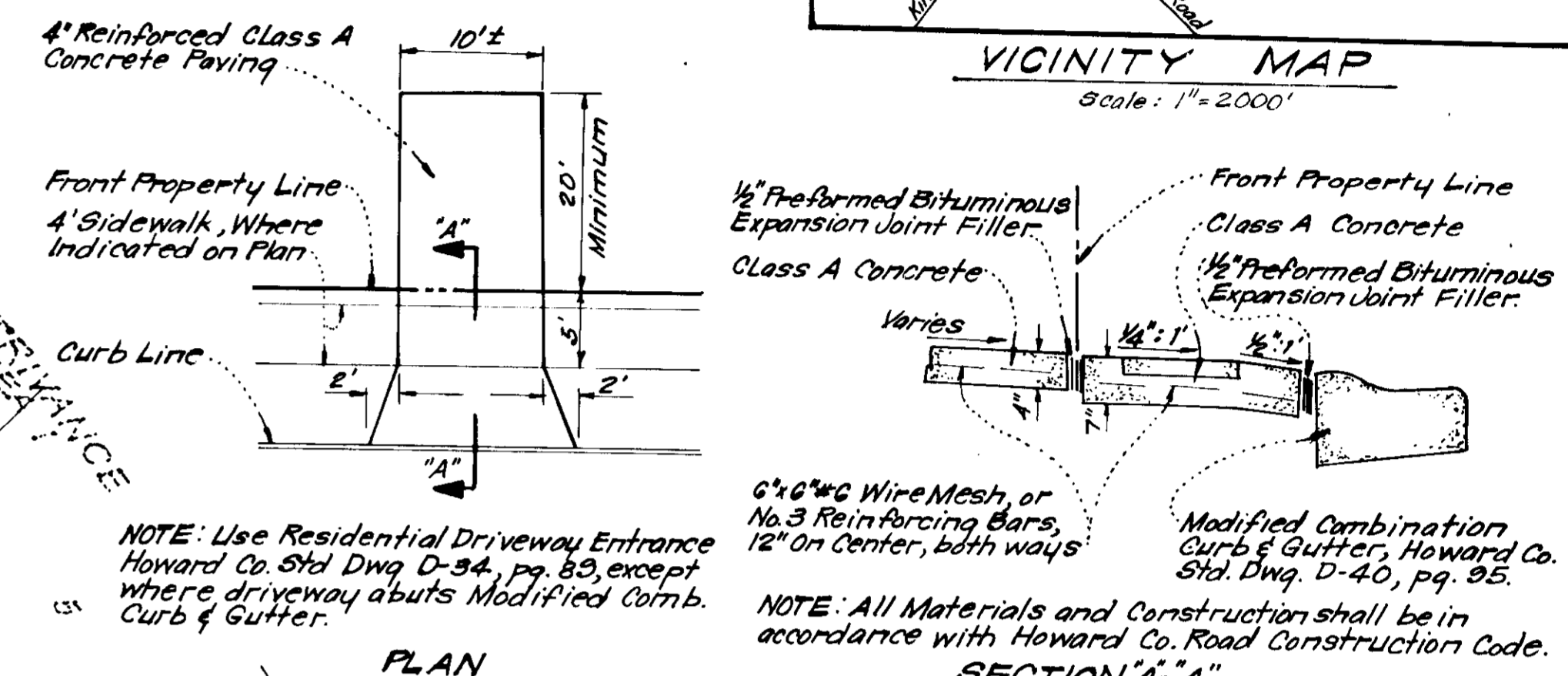
- 1 Contour Interval 2 FT.
- 2 Existing Contour -----
- 3 Proposed Contour - - - - -
- 4 Spot Elevation + 52E
- 5 Direction of Drainage →
- 6 Yard Requirements: Front: 20' on 50' Wide Street
Side: 30' on 60' Wide Street
Side: 7.5' (Min.)
- 7 Existing Trees to be Retained (Tree Symbol)
- 8 Walk-Out Basement W.O.B.

GENERAL NOTES

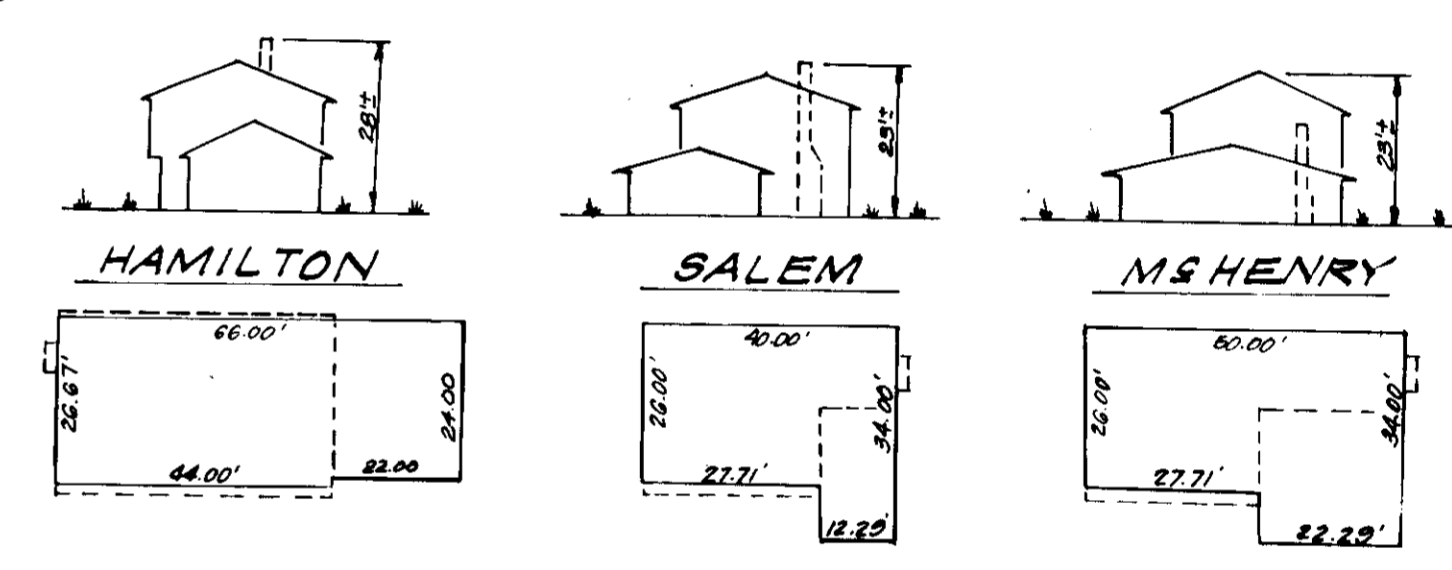
- 1. The Land Included in this Plan is zoned NewTown (S.F.M.D.).
- 2. The Lots shown on this Plan are covered by Final Development Plan Phase 148 recorded in Plat Book 28, Folio's 72 to 79.
- 3. All Coordinates are based on Maryland State Grid System. Elevations are based on U.S. Coast and Geodetic Survey Mean Sea Level Datum of 1929.
- 4. The Area covered in this submission is located on Tax Map No. 42.
- 5. The total Area Included in this plan is 1.379 Acres.
- 6. All Roadways are Public and Existing.
- 7. Any damage to County Owned Right of Ways or Paving shall be corrected at the developer's expense.



VICINITY MAP
Scale: 1"=2000'



PLAN
DRIVEWAY ABUTTING MODIFIED COMBINATION CURB & GUTTER
No Scale



SURVEYOR'S CERTIFICATION

I hereby certify that the information contained herein is the same as shown on previously approved SDP-77-93C, with the following exceptions:
1. House type & grading has been revised on Lot 26.
I further certify that the Sediment & Erosion Control measures as previously approved will not be affected, the grading setbacks comply with RPD Phase 148, and the lot has the same geometric configuration as shown on the respective recorded subdivision plat.

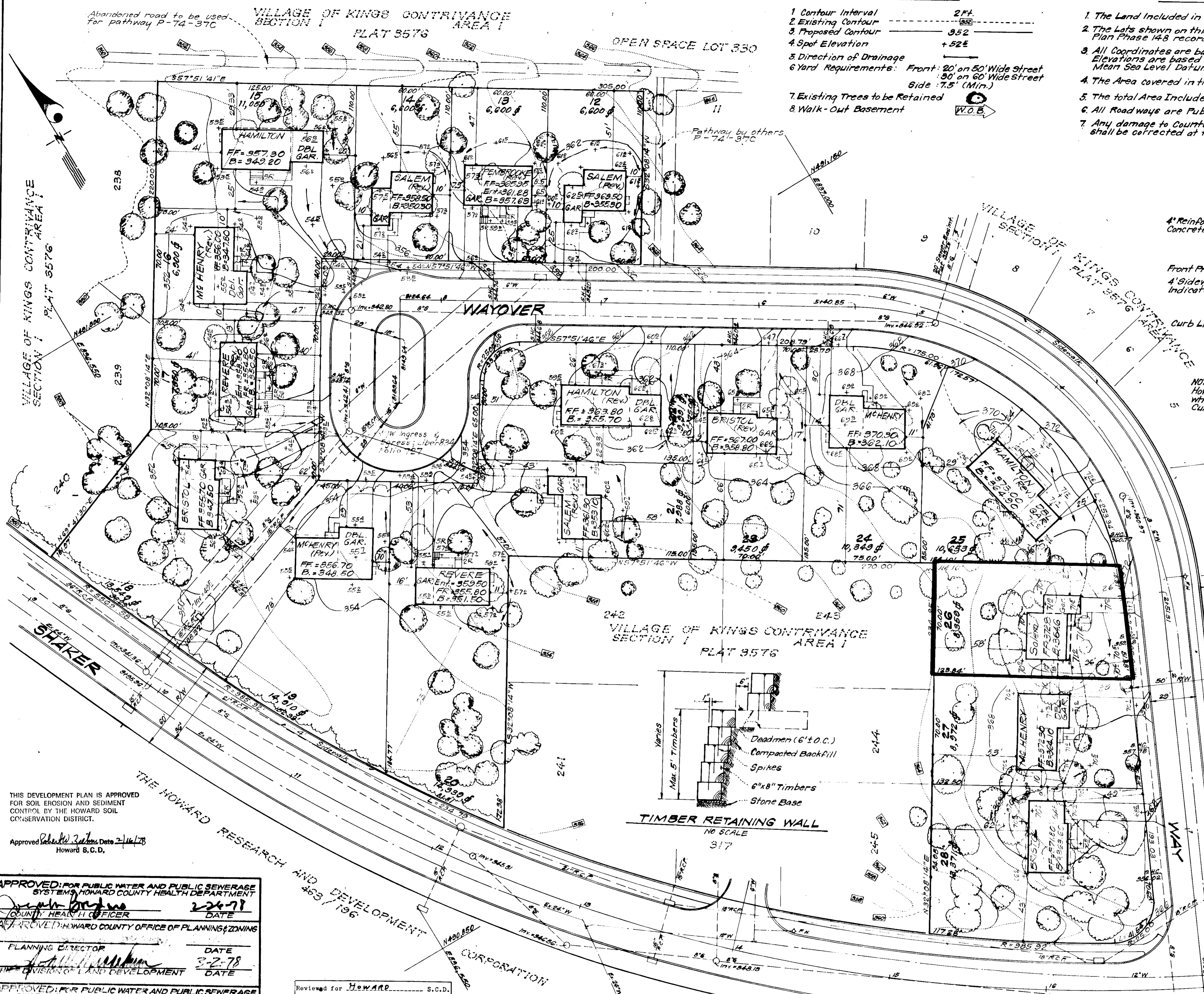
APPROVED
DIVISION OF LAND DEVELOPMENT
HOWARD COUNTY, MARYLAND
DATE 1-3-78

12-1-77 DATE
Donald B. Sackett
DONALD B. SACKETT
Registered Land Surveyor
Md. No. 6059

NOTE: For Bearings and Distances of individual lot lines See Record Plat recorded as Plat 9576.

CLARK • FINEFROCK & SACKETT ENGINEERS • PLANNERS • SURVEYORS 11315 LUCKWOOD DRIVE SILVER SPRING, MARYLAND 20904 (301) 593 3400	
DESIGNED D.B.S.	REVISOR REVISED SITE DEVELOPMENT PLAN LOTS 212, 213, 215, 223, 230, 232 & 26
DRAWN K.I.W.	COLUMBIA
CHECKED D.B.S.	VILLAGE OF KINGS CONTRIVANCE SECTION 1 AREA 1 6TH ELECTION DISTRICT HOWARD COUNTY, MARYLAND
DATE Nov 1977	FOR: The Ryland Group Inc., Col. Division Suite 200 V.O.M. Office Bldg. Columbia, Maryland 21045
SCALE 1"=30'	DRAWING 2 of 2
JOB NO.	FILE NO. 1241-XA

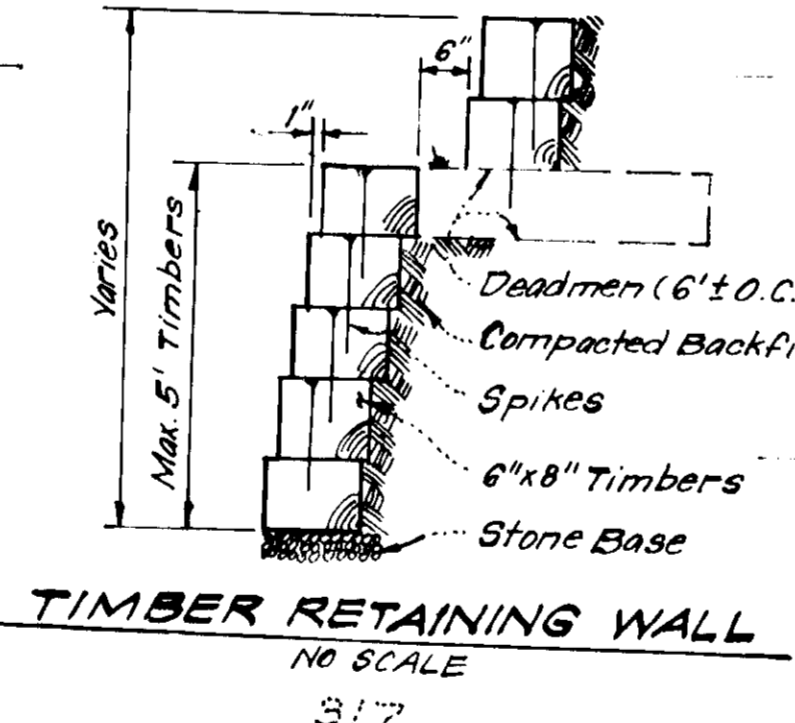
SDP-78-58



THIS DEVELOPMENT PLAN IS APPROVED FOR SOIL EROSION AND SEDIMENT CONTROL BY THE HOWARD SOIL CONSERVATION DISTRICT.
Approved *Robert J. Ziemke* Date 2-16-78
Howard S.C.D.

APPROVED FOR PUBLIC WATER AND PUBLIC SEWERAGE SYSTEMS HOWARD COUNTY HEALTH DEPARTMENT
Clayton H. Jones 2-2-78 DATE
COUNTY HEALTH OFFICER
APPROVED HOWARD COUNTY OFFICE OF PLANNING & ZONING
PLANNING DIRECTOR DATE
William J. Williams 3-2-78 DATE
DIVISION OF LAND DEVELOPMENT
APPROVED FOR PUBLIC WATER AND PUBLIC SEWERAGE, STORM DRAINAGE SYSTEMS AND PUBLIC ROADS
HOWARD COUNTY DEPARTMENT OF PUBLIC WORKS
W. J. Sackett 2-23-78 DATE
DIRECTOR
CHIEF BUREAU OF ENGINEERING DATE
2-23-78

Reviewed for HOWARD S.C.D. and meets Technical Requirements
R. Wayne Day Date 2/11/78
Signature
U.S. Soil Conservation Service



See Also 110-200