

IRVIN DASHER
EXCEPTION IV. 388-408
452-501

LEGEND

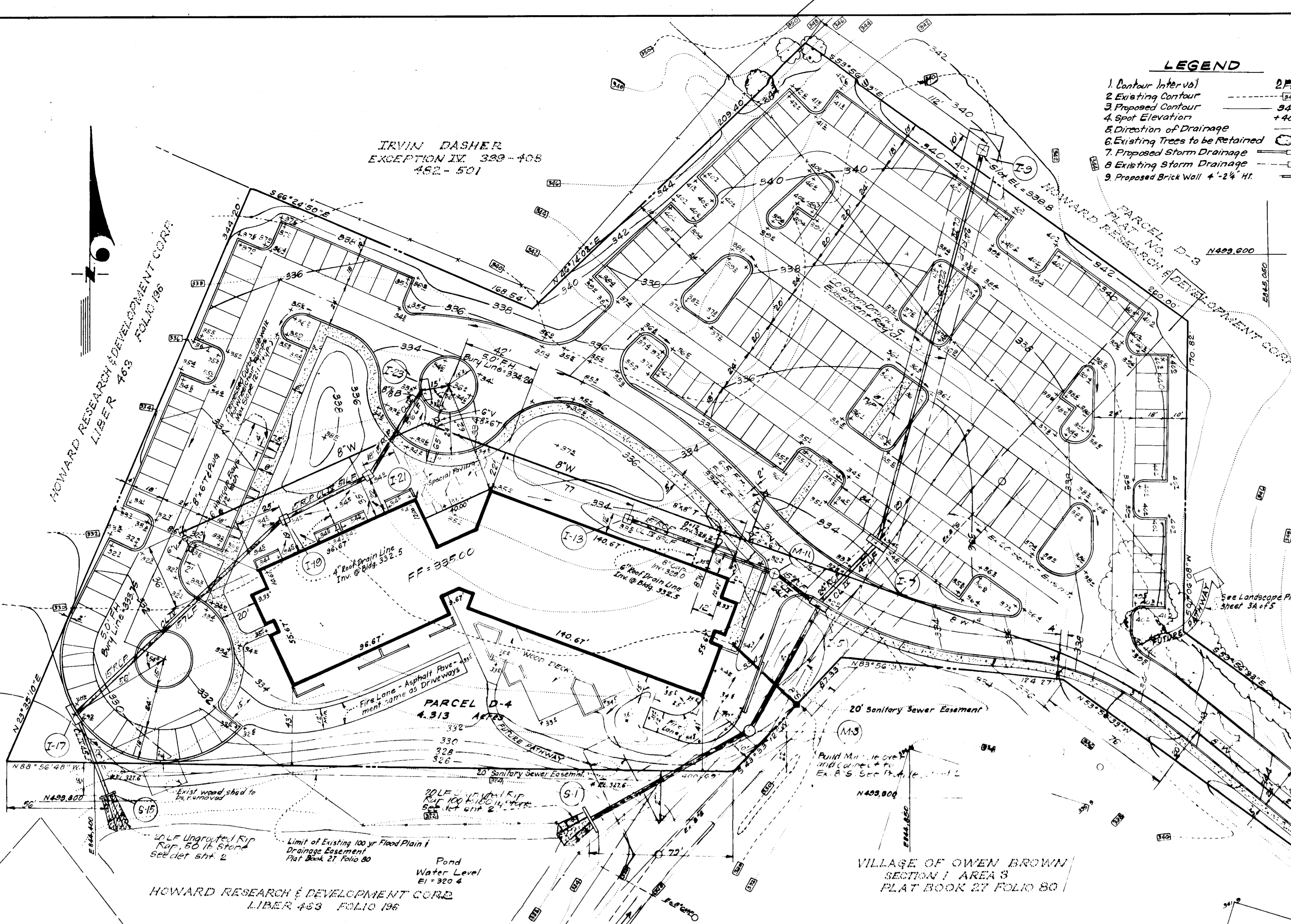
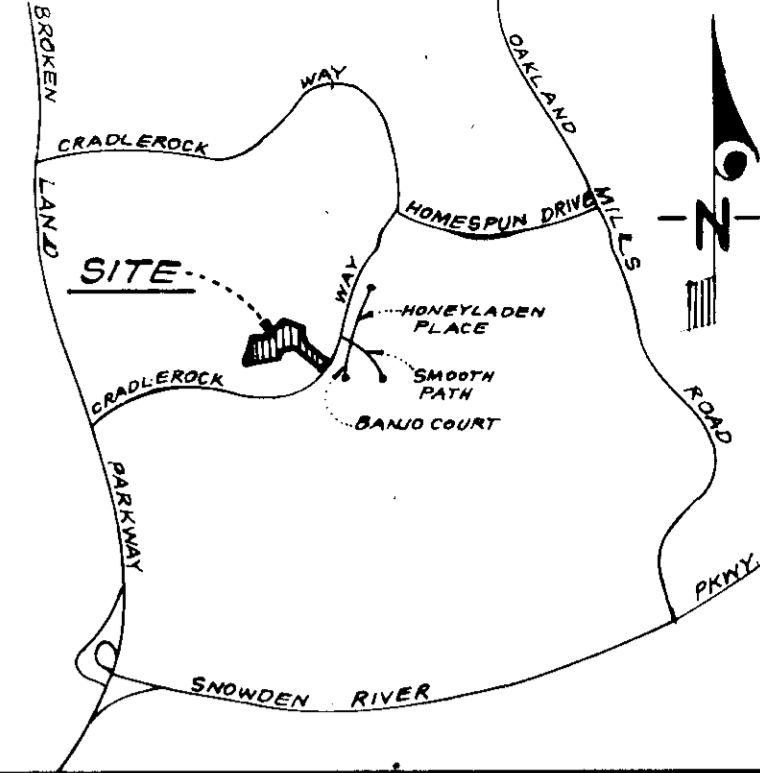
- 1. Contour Interval 2' P.I.
- 2. Existing Contour 540
- 3. Proposed Contour 540
- 4. Spot Elevation +40±
- 5. Direction of Drainage
- 6. Existing Trees to be Retained
- 7. Proposed Storm Drainage
- 8. Existing Storm Drainage
- 9. Proposed Brick Wall 4'-2 1/2" Ht.

SITE ANALYSIS

- 1. Zoning: New Town - Mid Rise Apartment
- 2. Area: 4.313 Acres
- 3. Maximum No. of Units Permitted: 188*
*Based on 50% Elderly, 50% Family Patio.
- 4. Number of Units Proposed: 188
- 5. Parking Analysis:
94 Family Units @ 1.5 = 141 Parking Spaces
94 Elderly Units @ 0.4 = 38 Parking Spaces
Total Parking Required = 179 Parking Spaces
Total Parking Shown = 179 Parking Spaces
- 6. Building Coverage: 8.8%

GENERAL NOTES

- 1. The Lot shown on this plan is covered by amended Final Development Plan Phase 13-A-12, recorded as Plat.
- 2. Recording Reference: Recorded as Plat No.
- 3. The Area covered in this submission is located on Tax Map No. 30.
- 4. All Coordinates are based on Maryland State Grid System. Elevations are based on U.S. Coast and Geodetic Survey Mean Sea Level Datum of 1929.
- 5. All Driveways & Parking Areas are Privately Owned & Maintained.
- 6. Installation of all traffic control devices, markings and signing shall be in accordance with the latest Edition of the Manual of Uniform Traffic Control Devices.
- 7. Construction will be in accordance with the Howard County Road Construction Code and Standard Specifications and "Maryland State Roads Commission Specifications for Materials, Highway Bridges and Incidental Structures" dated March 1968, and revisions thereof or additions thereto.
- 8. Call "Miss Utility" 24 hrs in advance of construction (Phone 553-0100)
- 9. Roof Storm Water carried in downspouts will be handled by one of the following methods:
a. Downspout to splash block and discharged to ground having good permeation
b. Downspouts piped to curb
c. Downspouts connected to Storm Drains.
- 10. The Developer agrees to work with the Dept. of Licenses & Inspections to resolve any problems caused by Roof Water Discharge.
- 11. All Water Mains to be C.I.P., D.I.P. or A.C.P.
- 12. Top of all Water Mains to have a minimum of 3.5' Cover.
- 13. All Sewer Mains shall be C.S.P.X., V.C.P.X. or A.C.P. Class 2400.
- 14. All materials used for W&S shall be in accordance with Howard Co standards.

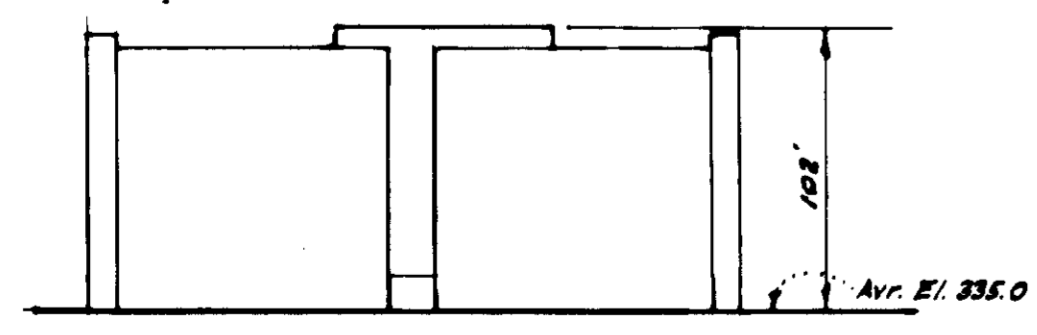


VILLAGE OF OWEN BROWN
SECTION 1 AREA 3
PLAT BOOK 27 FOLIO 80

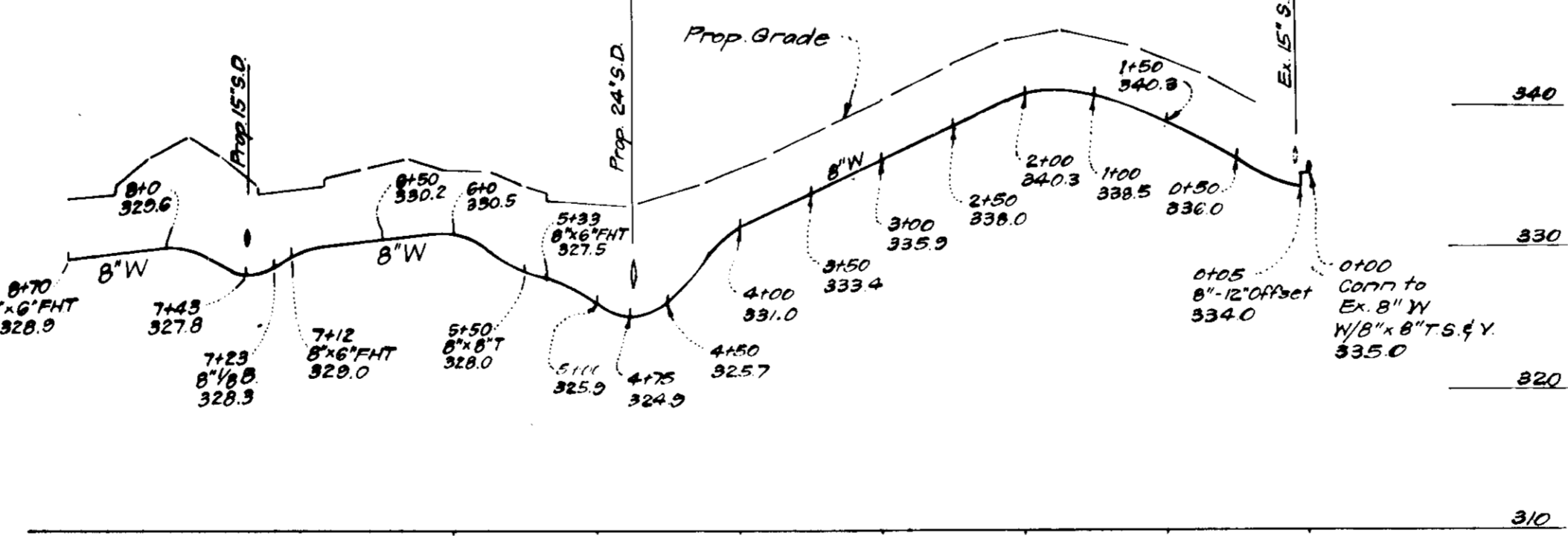
HOWARD RESEARCH & DEVELOPMENT CORP.
LIBER 453 FOLIO 196

Note:
For Future Pathway Connection
see Landscape Plan, 3A of 3

APPROVED FOR PUBLIC WATER AND PUBLIC SEWERAGE SYSTEMS HOWARD COUNTY HEALTH DEPARTMENT
DATE 12-4-77
PLANNING DIRECTOR
DATE 11-11-77
DATE 11-19-77



BUILDING ELEVATION
No Scale



PROFILE FOR 8" WATER
SCALE: HORIZ. 1"=100' VERT. 1"=10'



J. H. Cook
11-8-77

OWNER:
HOWARD RESEARCH & DEVELOPMENT
The Rouse Company Building
Columbia, Maryland, 21024

CLARK • FINEROCK & SACKETT
ENGINEERS • PLANNERS • SURVEYORS
1115 LOCKWOOD DRIVE SILVER SPRING, MARYLAND 20904 (301) 593-3400

DESIGNED: W.H.T. SCALE: 1"=30'
DRAWN: K.I.W. DRAWING: 10F5
CHECKED: G.N.C. JOB NO.:
DATE: June, 1977 FILE NO.: 1273-X

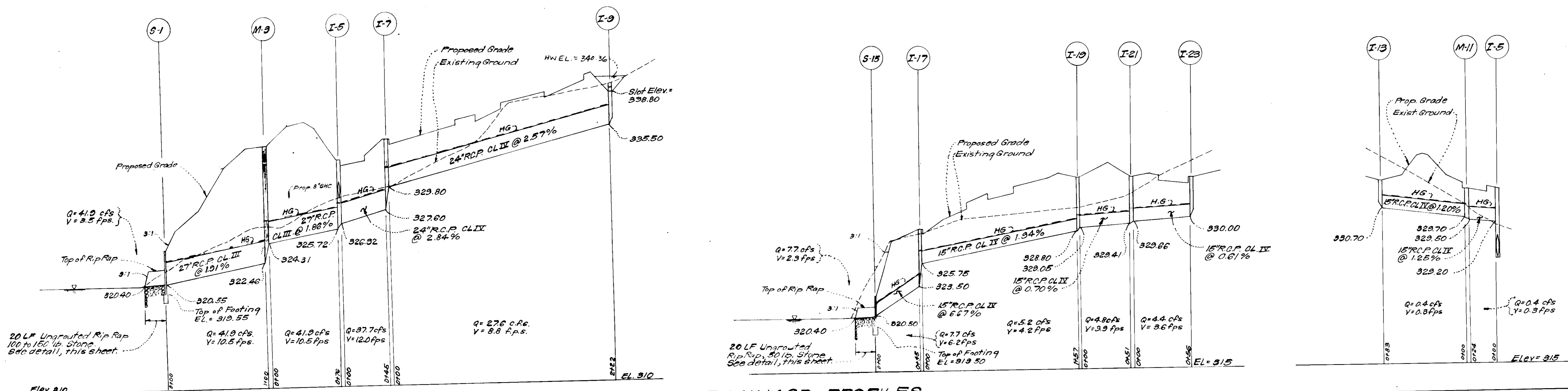
SITE DEVELOPMENT PLAN
PARCEL D-4
COLUMBIA
VILLAGE OF OWEN BROWN
SECTION 1 AREA 1
6TH ELECTION DISTRICT
HOWARD COUNTY, MARYLAND

FOR: WINSOR/FARLEY ARCHITECTS
Skyway Bldg. Arcade, Northwestern Nat. Bank
St. Paul, Minnesota 55191

APPROVED
PLANNING BOARD
OF HOWARD COUNTY
DATE 10-26-77

CRADLEROCK WAY

Connect to Ex. 8" W
(Cont. 4860 W&S)
With 5' x 8" T.S. 5' W.



STORM DRAINAGE PROFILES

SCALE: Horiz. 1"=50'
Vert. 1"=5'

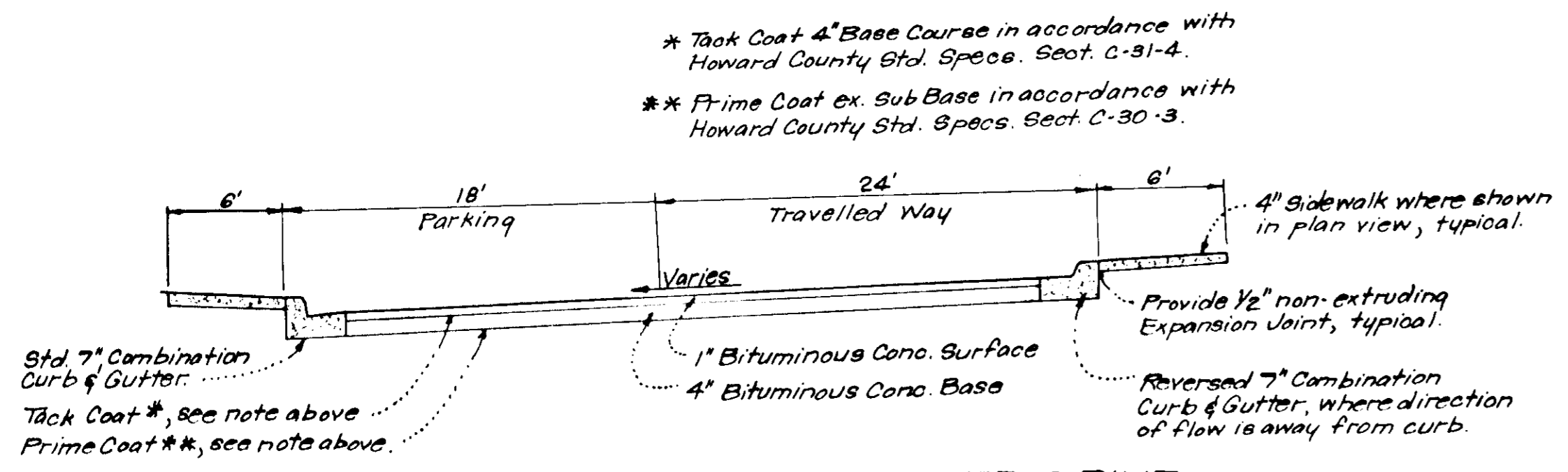
STRUCTURE SCHEDULE

No	TYPE	INV. IN	INV. OUT	TOP ELEVATION UPPER LOWER	REMARKS	LOCATION
S-1	"C" End wall *	320.65	320.65	320.65	Howard Co. Std. D-52 Pg. 107 Dia=27"	See Plan
M-3	"A" Manhole	324.31	322.46	334.20	Howard Co. Std. D-103, Pg. 158 Dia=48"	See Plan
I-5	A-10 Inlet	326.32	325.72	332.60 332.60	Howard Co. Std. D-64A, Pg. 113A W=24"	See Plan
I-7	A-10 Inlet	329.80	327.60	334.60 334.60	Howard Co. Std. D-64A, Pg. 113A W=24"	See Plan
I-9	"C" Inlet +	335.50	335.50	333.63	Howard Co. Std. S.D. C/19 48" Dia	See Plan
M-11	"B" Manhole	329.70	329.50	332.55	Howard Co. Std. S.D. D/43 48" Dia	See Plan
I-19	"S" Inlet	330.70	330.70	333.50	Howard Co. Std. S.D. D/43	See Plan
S-15	"C" End wall *	320.50	320.50	320.50	Howard Co. Std. D-52 Pg. 107 Dia=27"	See Plan
I-17	A-10 Inlet	325.75	323.50	329.20 329.20	Howard Co. Std. D-64A, Pg. 113A W=24"	See Plan
I-19	"S" Inlet	329.05	328.80	334.20	Howard Co. Std. S.D. D/43	See Plan
I-21	"S" Inlet	329.66	329.41	334.00	Howard Co. Std. S.D. D/43	See Plan
I-23	A-10 Inlet	330.00	330.00	333.00 333.00	Howard Co. Std. D-64A, Pg. 113A W=24"	See Plan

* Increase H dimension by 12" to allow for Rip Rap.
† Provide Slots on all sides.

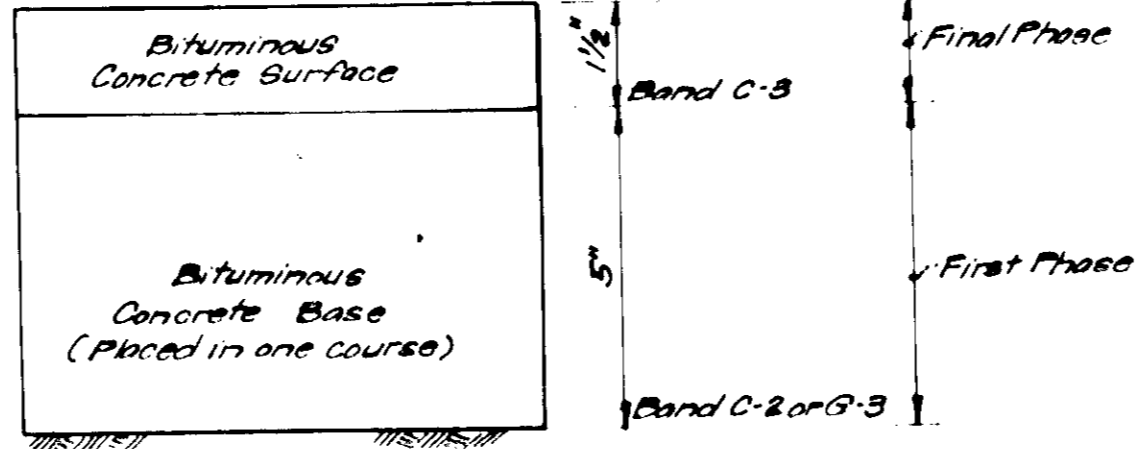
PIPE SCHEDULE

SIZE	TYPE	LENGTH
15"	R.C.P. CLIX	416 L.F.
24"	R.C.P. CLIX	207 L.F.
27"	R.C.P. CLIX	176 L.F.



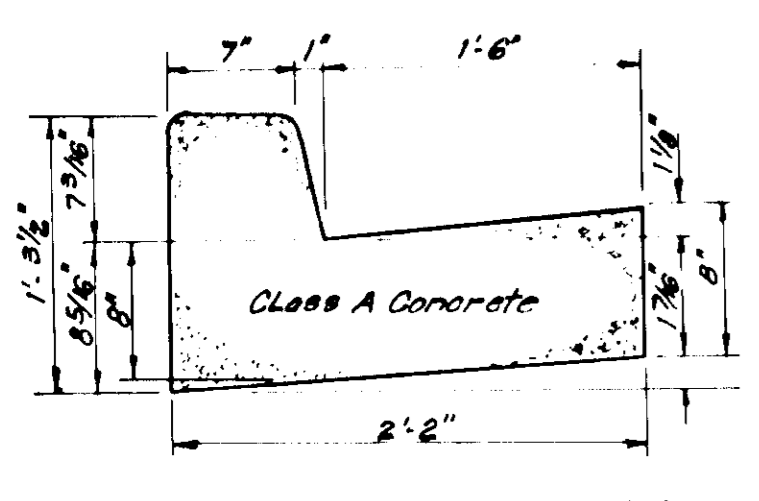
TYPICAL PAVING SECTION PRIVATE DRIVE AND PARKING

No Scale



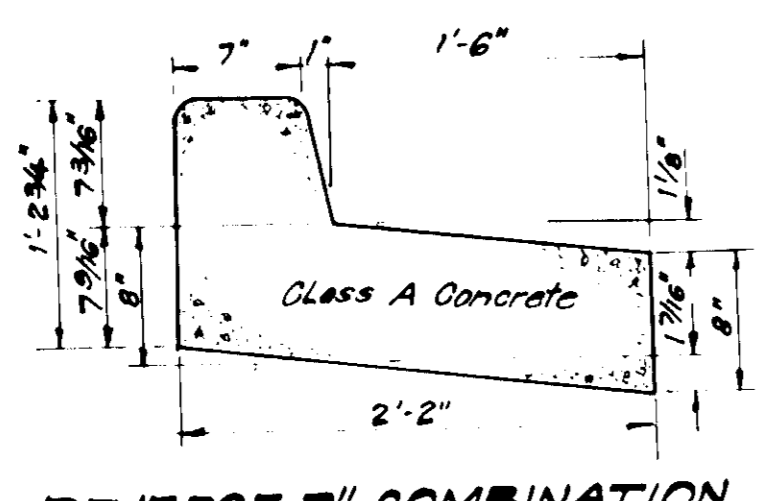
PAVEMENT REPLACEMENT FOR ENTRANCES INTO PUBLIC ROADS

To be constructed in accordance with the Howard County Road Construction Code and Specifications.



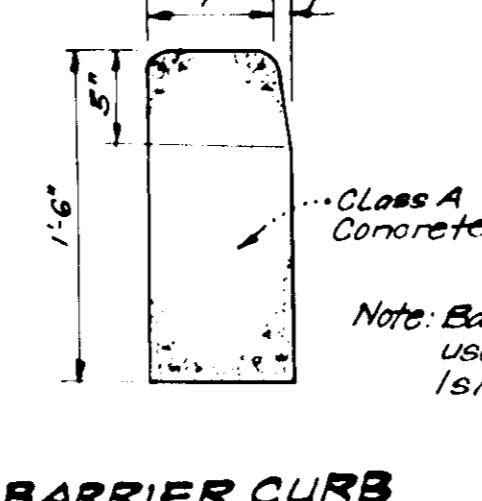
STANDARD 7" COMBINATION CURB & GUTTER

No Scale



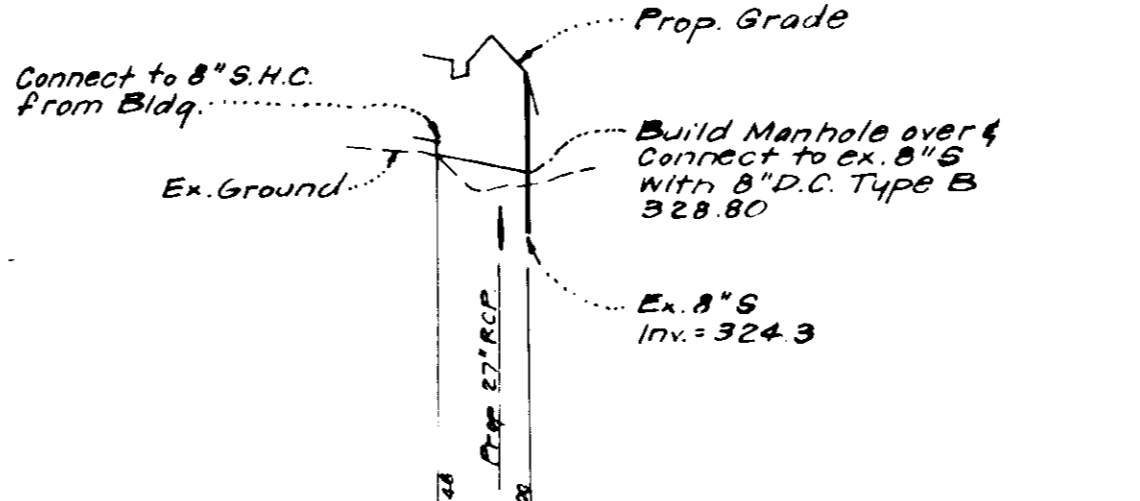
REVERSE 7" COMBINATION CURB & GUTTER

No Scale



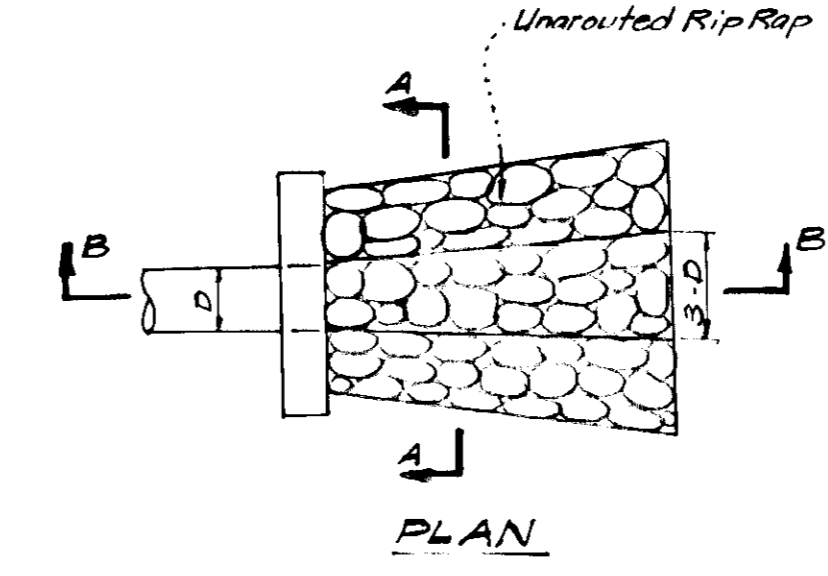
Barrier Curb

No Scale



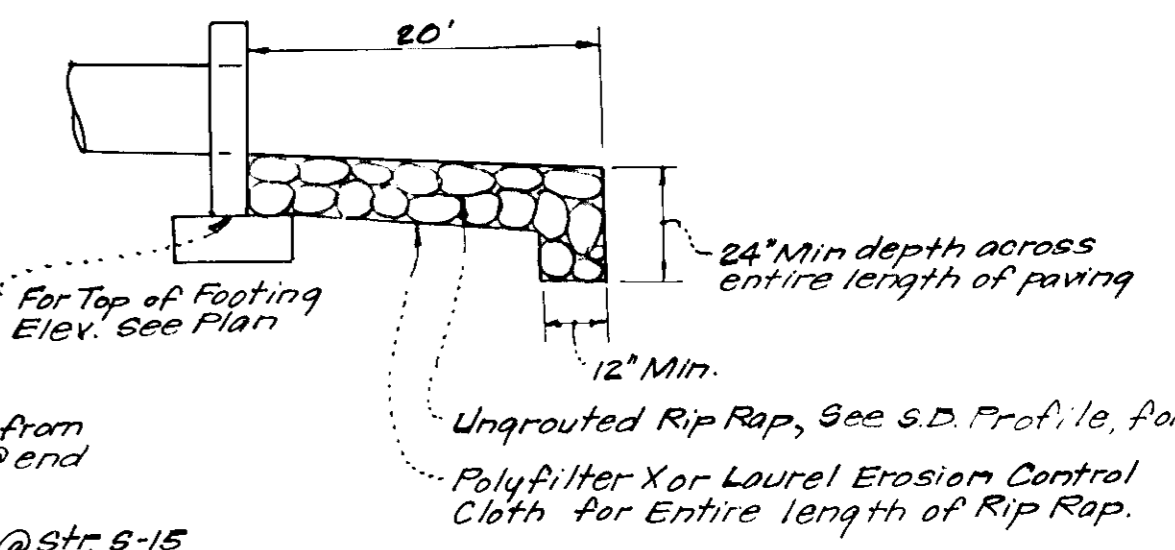
PROFILE FOR 8" SEWER HOUSE CONNECTION

SCALE: Horiz. 1"=100'
Vert. 1"=10'



PLAN

** Transition Side Slopes from 2:1 @ End wall to 3:1 @ end of Rip Rap.



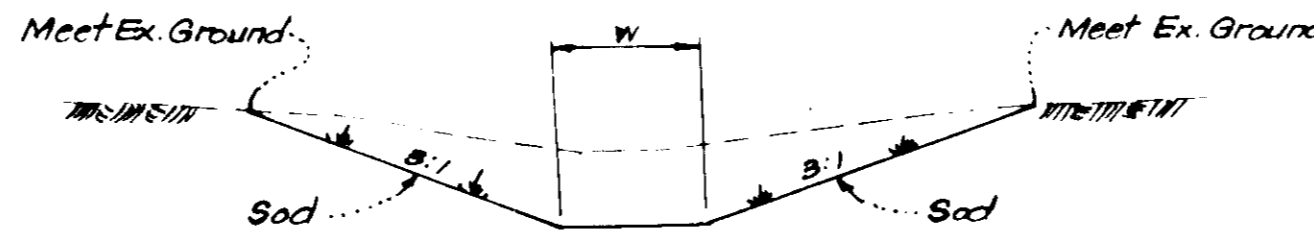
SECTION B-B



SECTION A-A

RIP RAP PAVING DETAILS

No Scale



SODDED DITCH DETAIL

GENERAL SODDING NOTES

1. Apply 10-10-10 Fertilizer @ 1000#/acre (25#/1000#).
2. Apply Ground Agricultural Limestone @ 2000#/acre (50#/1000#).
3. Incorporate both Lime & Fertilizer into soil by discing, Firm up after incorporation.
4. Lay Sod to a tight fit. Roll to insure contact with underlying soil. Water as necessary for 1st two weeks (in summer) to insure establishment.

APPROVED FOR PUBLIC WATER AND PUBLIC SEWERAGE SYSTEMS HOWARD COUNTY HEALTH DEPARTMENT

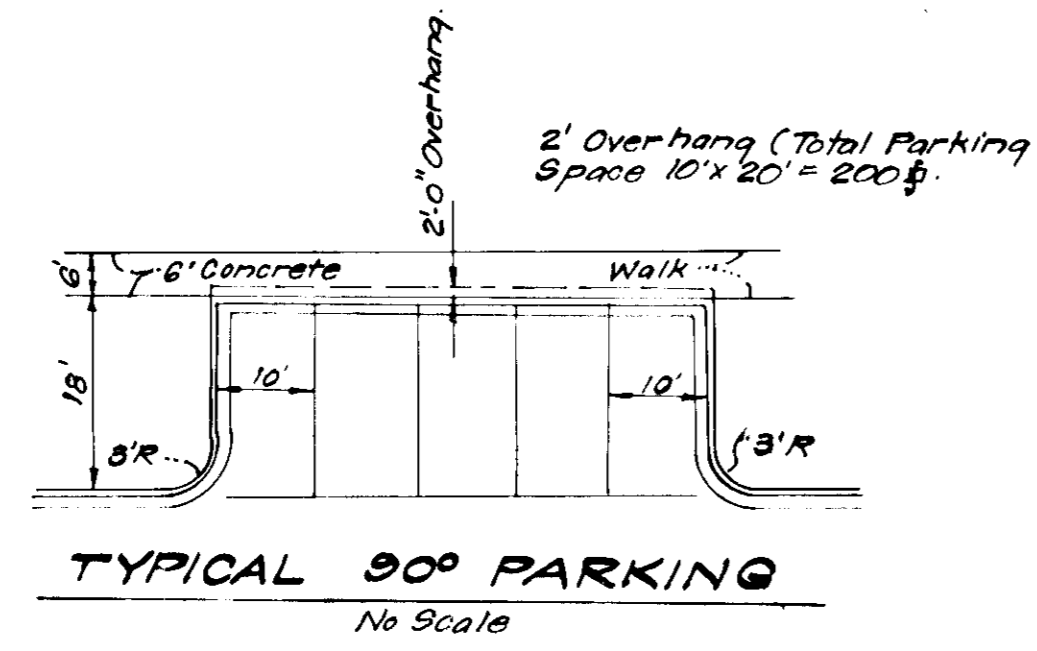
Joseph A. ... 12-4-77

HOWARD COUNTY OFFICE OF PLANNING & ZONING

DATE: _____

DATE: _____

DATE: _____



TYPICAL 90° PARKING

No Scale



11-8-77

OWNER: HOWARD RESEARCH & DEVELOPMENT CORP.
The Rouse Company Building
Columbia, Maryland 21044.

CLARK • FINEFROCK & SACKETT
ENGINEERS • PLANNERS • SURVEYORS

1101 L. WOOD DRIVE SILVER SPRING, MARYLAND 20904 (301) 593-4500

DESIGNED: R.U.S. SITE DEVELOPMENT PLAN PROFILES AND DETAILS PARCEL "D-4" COLUMBIA VILLAGE OF OWEN BROWN SECTION 1 AREA 1 6TH ELECTION DISTRICT HOWARD COUNTY, MARYLAND

DRAWN: K.I.W. DRAWING: 2 of 5

CHECKED: D.A.B. JOB NO.:

DATE: July, 1977 FILE NO. 1273-X

FOR WINBOR/JARIC ARCHITECTS
Skyway Bldg. Area 6, Northwestem Nat. Park
St. Paul, Minnesota 55119

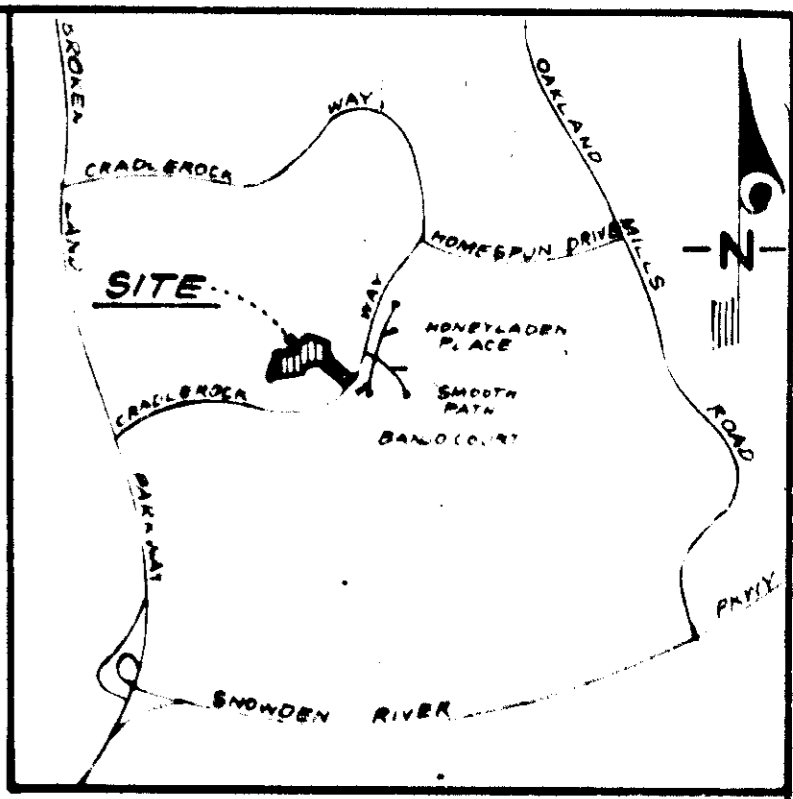
SDP-78-09c

APPROVED
PLANNING BOARD
OF HOWARD COUNTY
DATE: 10-26-77

LIGHTING SCHEDULE

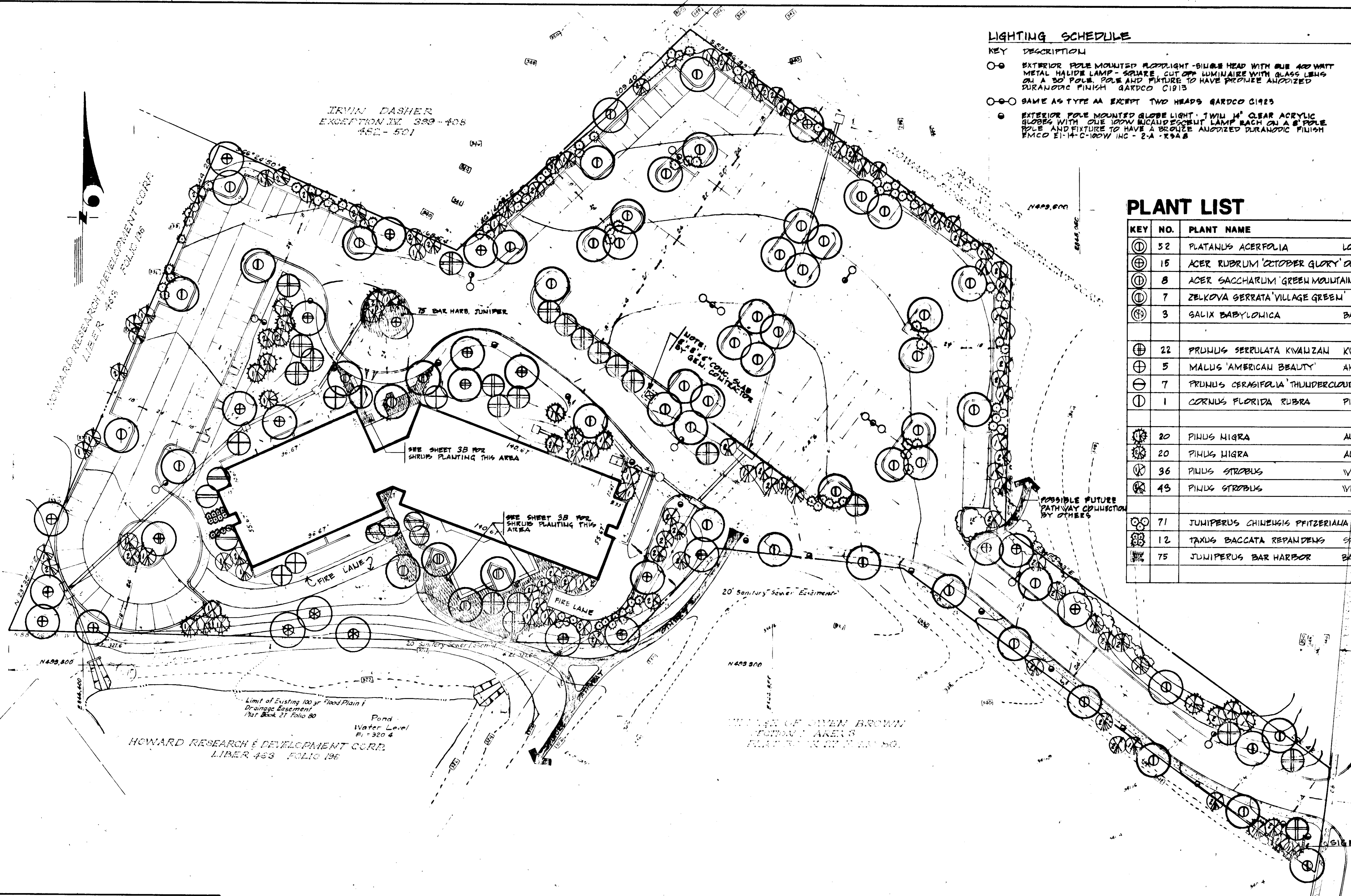
KEY DESCRIPTION

- ⊙ ⊙ EXTERIOR POLE MOUNTED FLOODLIGHT - BILBOE HEAD WITH BLUE 400 WATT METAL HALIDE LAMP - SQUARE CUT OFF LUMINAIRE WITH GLASS LENS ON 1" 80' POLE. POLE AND FIXTURE TO HAVE BRONZE ANODIZED DURANODIC FINISH GARDCO C1913
- ⊙ ⊙ ⊙ SAME AS TYPE AA EXCEPT TWO HEADS GARDCO C1923
- ⊙ EXTERIOR POLE MOUNTED GLOBE LIGHT - TWO 1/2" CLEAR ACRYLIC GLOBES WITH ONE 100W INCANDESCENT LAMP EACH ON A 6' POLE. POLE AND FIXTURE TO HAVE A BRONZE ANODIZED DURANODIC FINISH EMCO E1-14-C-100W-1HC - 2-A-R3A-B



PLANT LIST

KEY	NO.	PLANT NAME	SIZE	REMARKS
⊕	52	PLATANUS ACERIFOLIA LONDON PLANETREE	5-5 1/2" CAL 14-16' HT.	BIB HEAVY
⊕	15	ACER RUBRUM 'OCTOBER GLORY' OCTOBER GLORY MAPLE	5-5 1/2" CAL 14-16' HT.	BIB HEAVY
⊕	8	ACER SACCHARUM 'GREEN MOUNTAIN' GREEN MOUNT. S. MAP	5-5 1/2" CAL 14-16' HT.	BIB HEAVY
⊕	7	ZELKOVA GERRATA 'VILLAGE GREEN' VIL. GR. ZELKOVA	4-4 1/2" CAL 16-18' HT.	BIB HEAVY
⊕	3	SALIX BABYLONICA BABYLON WEeping WILLOW	5-5 1/2" CAL 14-16' HT.	BIB HEAVY
⊕	22	PRUNUS SERRULATA KWANZAN KWANZAN FLOW'G CHERRY	2 1/2-3" CAL 8-10' HT.	BIB HEAVY
⊕	5	MALUS 'AMERICAN BEAUTY' AMER. BEAT. CRAB APPLE	2 1/2-3" CAL 8-10' HT.	" " " "
⊕	7	PRUNUS CERASIFOLIA 'THUNDERCLOUD' PURPLE LEAF PLUM	2 1/2-3" CAL 8-10' HT.	" " " "
⊕	1	CORNUS FLORIDA RUBRA PINK FLOW'G DOGWOOD	2 1/2-3" CAL 8-10' HT.	" " " "
⊕	20	PINUS NIGRA AUSTRIAN PINE	5-6' HT.	BIB HEAVY
⊕	20	PINUS NIGRA AUSTRIAN PINE	7-8' HT.	" " " "
⊕	36	PINUS STROBUS WHITE PINE	6-8' HT.	" " " "
⊕	43	PINUS STROBUS WHITE PINE	8-10' HT.	" " " "
⊕	71	JUNIPERUS CHINEENSIS PFITZERIANA PFITZER JUNIPER	2 1/2-5' HT.	BIB HEAVY
⊕	12	TAXUS BACCATA REPANDENS SPREAD EHQ. YEW	15-24' SP.	" " " "
⊕	75	JUNIPERUS BAR HARBOR BAR HARBOR JUNIPER	15-18' SP.	PLANTED



APPROVED FOR PUBLIC WATER AND PUBLIC SEWERAGE SYSTEMS, HOWARD COUNTY HEALTH DEPARTMENT
 COUNTY HEALTH OFFICER *[Signature]* 12-4-77
 APPROVED HOWARD COUNTY OFFICE OF PLANNING & ZONING
 PLANNING DIRECTOR *[Signature]* 11-20-77
 CHIEF DIVISION OF LAND DEVELOPMENT
 APPROVED FOR PUBLIC WATER AND PUBLIC SEWERAGE, STORM DRAINAGE SYSTEMS AND PUBLIC ROADS, HOWARD COUNTY DEPARTMENT OF PUBLIC WORKS
 DIRECTOR *[Signature]* 11-29-77
 CHIEF BUREAU OF HIGHWAYS *[Signature]* _____



[Signature]
 4-8-77

CLARK • FINEFROCK & SACKETT
 ENGINEERS • PLANNERS • SURVEYORS

LANDSCAPE PLANTING PLAN
 PARCEL D-4 LIGHTING PLAN
COLUMBIA
 VILLAGE OF OWEN BROWN
 SECTION 1 AREA 1
 6TH ELECTION DISTRICT
 HOWARD COUNTY, MARYLAND

SCALE: 1" = 30'
 DRAWING: 3A of 5
 JOB NO.: _____
 FILE NO.: LS-111

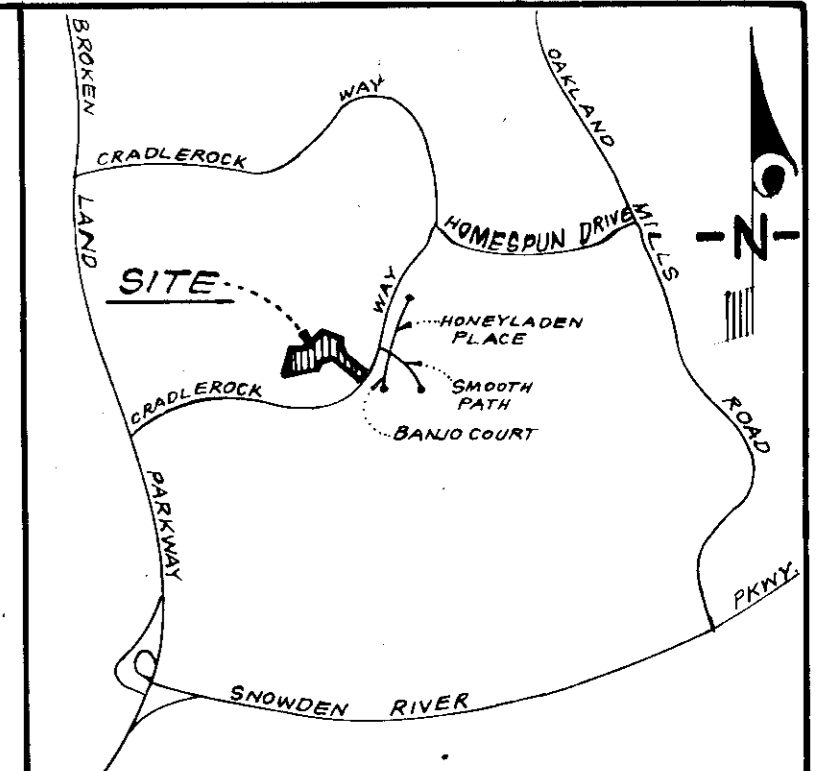
DATE: 10/26/77
 FOR: WINSOR/FARICY ARCHITECTS
 Skyway Bldg. Arcade, Northwestern Nat. Bank
 St. Paul, Minnesota 55101

APPROVED
 PLANNING BOARD
 OF HOWARD COUNTY
 DATE 10-26-77

CRADLEROCK

SEDIMENT & EROSION CONTROL LEGEND

1. Diversion Dike ———→ D.D. ———→
 2. Straw Bale Dike or Silt Fence ———→ S.B.D. or S.F. ———→
 3. Silt Fence ———→ S.F. ———→
 4. Stabilized Construction Entrance ———→ [Symbol]



ST-4 @ Str # I-23
 Drainage Area = 1.4 Acres
 Disturbed Area = 0.4 Acres
 Required Storage = 1800 V.O.A. = 720 cf
 Storage Available = 720 cf
 Slot Crest Elev = 333.40
 Bottom Elev = 330.40

ST-9
 Drainage Area = 4.5 Acres
 Disturbed Area = 3.9 Acres
 Required Storage = 1800 V.O.A. = 8,100 cf
 Storage Available = 8,100 cf
 Top Stone Crest = 324.50
 Bottom of Trap = 320.00

ST-4 @ Str # I-17
 Drainage Area = 0.6 Acres
 Disturbed Area = 0.6 Acres
 Required Storage = 1800 V.O.A. = 1080 cf
 Storage Available = 1080 cf
 Slot Crest Elev = 328.70
 Bottom Elev = 326.35

Stabilize Area Around Str. I-9 immediately after installation. Storm Drainage shall function to carry runoff.

Block Shut Inlet with Plywood Sand Bags or Brak Shut

Reviewed for...
 and meets Technical Requirements
 U.S. Soil Conservation Service

THIS DEVELOPMENT PLAN IS APPROVED FOR SOIL EROSION AND SEDIMENT CONTROL BY THE HOWARD COUNTY CONSERVATION DISTRICT.

John D. Nelson 7-7-77
 DEVELOPER'S CERTIFICATE

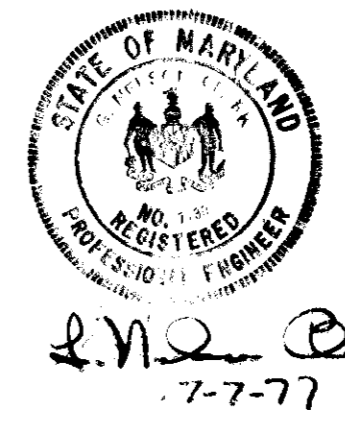
I certify that all development and/or construction will be done according to the plan of development...

6. Nelson Clark 7-7-77
 ENGINEER'S CERTIFICATE

I hereby certify that this plan for location and construction of a practical and workable plan for a... Knowledge of the site conditions and that it was prepared in accordance with the requirements of the Howard County Conservation District.

APPROVED FOR PUBLIC WATER AND PUBLIC SEWERAGE SYSTEMS, HOWARD COUNTY HEALTH DEPARTMENT
 12-4-77
 PLANNING DIRECTOR DATE

APPROVED FOR PUBLIC WATER AND PUBLIC SEWERAGE SYSTEMS AND PUBLIC ROADS, HOWARD COUNTY DEPARTMENT OF PUBLIC WORKS
 7-7-77
 DIRECTOR DATE



OWNER:
 HOWARD RESEARCH & DEVELOPMENT CORP.
 The Ruben Co. Bldg.
 Columbia, Md. 21044

CLARK • FINEFROCK & SACKETT
 ENGINEERS • PLANNERS • SURVEYORS
 1111 WOOD DRIVE SILVER SPRING, MARYLAND 20904 (301) 583-3400

DESIGNED D.A.B.
 DRAWN K.I.W.
 CHECKED G.N.C.
 DATE July, 1977

SITE DEVELOPMENT PLAN
 SEDIMENT & EROSION CONTROL PLAN
 & DRAINAGE AREA MAP
 PARCEL D-4
COLUMBIA
 VILLAGE OF OWEN BROWN
 SECTION I
 C&H ELECTION DISTRICT
 HOWARD COUNTY, MARYLAND
 FOR: WINSOR, FAIRY ARCHITECTS
 Skynny Bldg. Arcade, Northwestern Nat. Bank
 St. Paul, Minnesota 55101

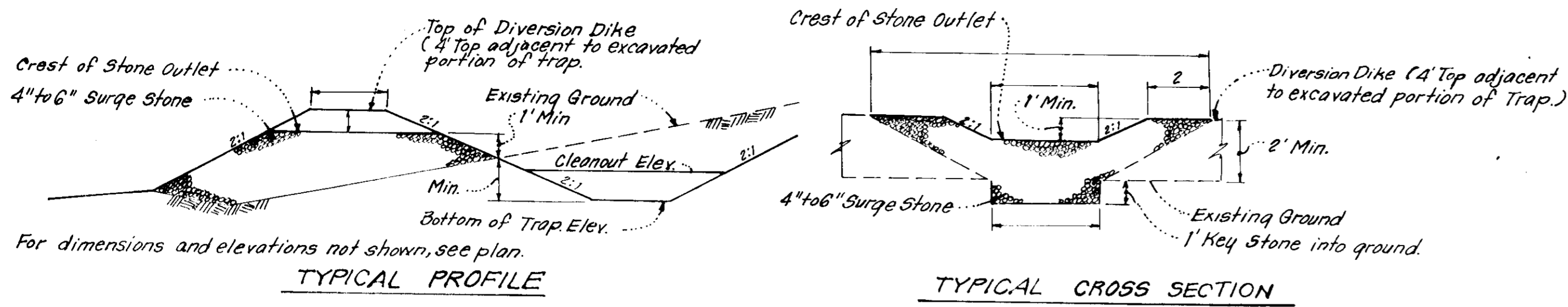
SCALE As Shown
 DRAWING 4 OF 5
 JOB NO.
 FILE NO. 1253-SE

SDP-78-09c 110-298 1273-X

GENERAL NOTES

- All Sediment and Erosion Control Measures will be installed and stabilized according to this plan prior to any other grading, clearing, or disturbance of the existing surface of the site. See Note #5 for stabilization except that the seed mixture will be annual rye applied at the rate of 1.4 lbs/1000 sq.ft.
- Notify the Bureau of Inspections and Permits at least 24 hrs before starting any work.
- All Sediment Control Practices to conform to the Standards and Specifications for Soil Erosion and Sediment Control in Developing Areas and shall be adjusted to meet actual field conditions.
- Stabilization of disturbed ground to be done as soon after construction as possible.
- All grading shall be treated in accordance with the following Specifications:
 - Seed - certified 85% germination applied at the rate of 3lbs/1000 sq.ft. mixture - 40% Kentucky Blue, 20% Chewinq Fescue, 20% Kentucky 31, and 20% Annual Rye.
 - Fertilizer - 10-10-10 applied at the rate of 23 lbs/1000 sq.ft. Ground agricultural lime or dolomitic lime applied at the rate of 46 lbs/1000 sq.ft.
 - Mulch - Wood chipp grain straw applied at the rate of 70 lbs/1000 sq.ft. Mulch shall be secured to the ground by any approved method, i.e. asphalt tacks, chemical binder, wood chips, etc.
- All Structural Sediment Control Measures are to remain in place until permission for their removal has been obtained from the Bureau of Inspections and Permits.
- On site inspection and maintenance of all sediment control measures including cleanout of sediment traps and dikes, and proper establishment of all planned vegetative measures will be the responsibility of the Developer or his representative on the site, on a continuing day to day basis.
- Protection of stabilized area from sediment runoff shall be provided by the use of an approved sediment control device, i.e. straw bales, diversion dikes, etc.
- Site Analysis:

Total Area:	4.91 Acres
Area to be Roofed:	0.98 Acres
Area to be Paved:	2.52 Acres
Area to be Seeded:	1.41 Acres
Area Undisturbed:	0 Acres
- The Contractor shall keep all public roads free of sediment deposits left from traffic leaving construction site.
- Construction Sequence:
 - Install Stone Construction Entrance.
 - Construct Storm Drainage from S-1 to M-3.
 - Install Perimeter Dike and Sediment Trap S.T-9
 - Complete Storm Drainage Construction M-3 to I-9 and install Silt Fence around I-9 and stabilize area.
 - Construct Storm Drainage S-15 to I-23.
 - Install Sediment Traps S.T-4 at S.H.S. I-17 & I-23.
 - Install Silt Fence at Structures I-19 & I-21.
 - Excavate for Foundations and Rough Grade.
 - Erect structure, Construct Curb & Gutter, paving and Sidewalks.
 - At start of base paving remove S.T-4 at structures I-17 & I-23 and install Stone Filter Inlet Protection after base paving is completed.
 - Final Grade and Stabilize in accordance with General Note #5.

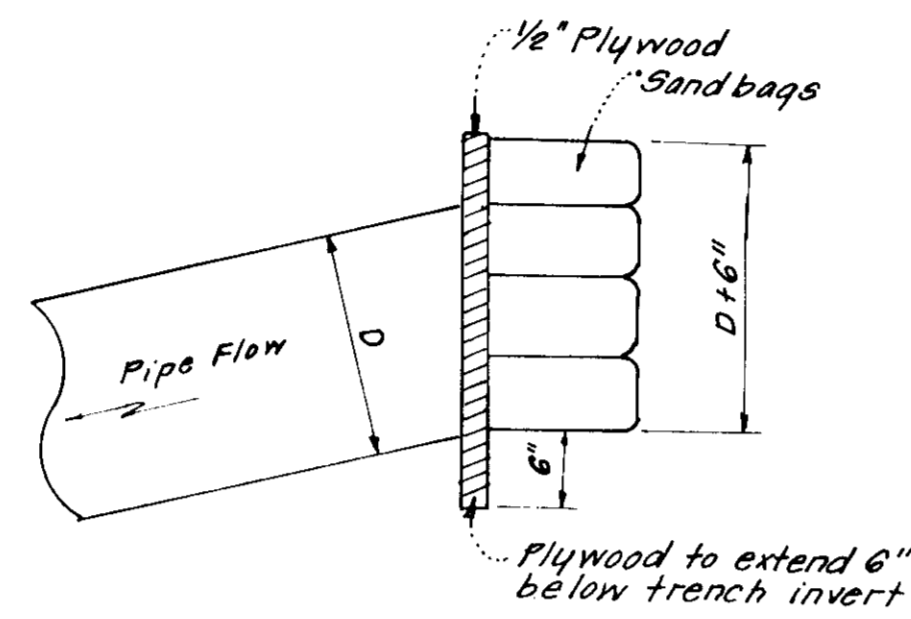


TYPICAL PROFILE

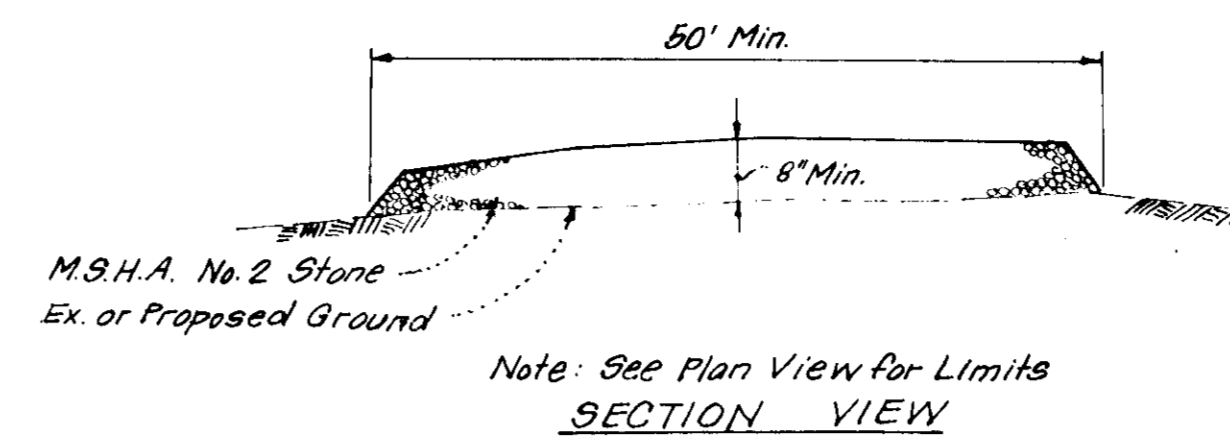
TYPICAL CROSS SECTION

- STONE FILTER OUTLET NOTES**
- Sediment Trap to be cleaned out when sediment reaches a level 4" below the Crest of Stone Outlet.
 - Bottom of Sediment Trap to be level and constructed to the dimensions shown on plan.
 - Stone Outlet to be constructed through diversion dike adjacent to excavated portion of Sediment Trap.

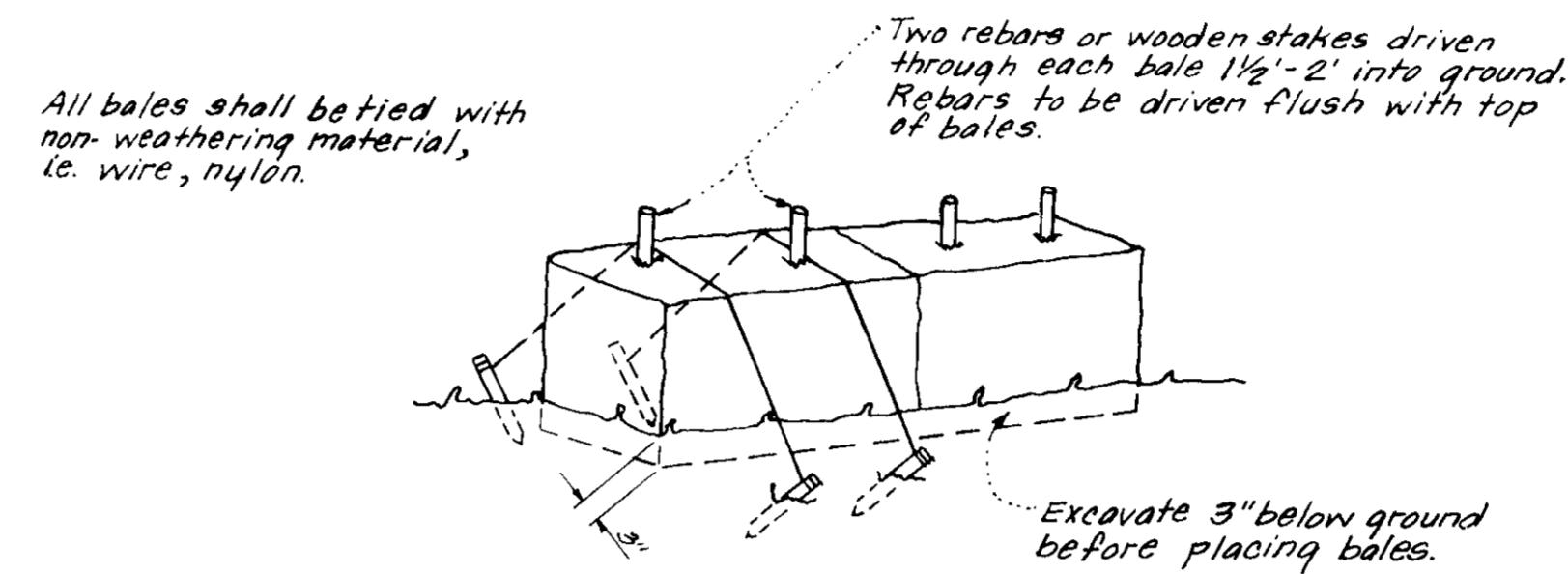
DETAILS OF STONE FILTER OUTLET (FOR STONE OUTLET SEDIMENT TRAP)
NO SCALE



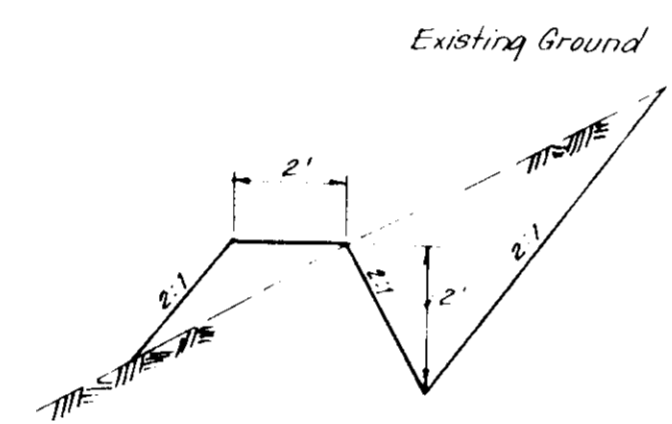
PIPE BLOCKING DETAIL
No Scale



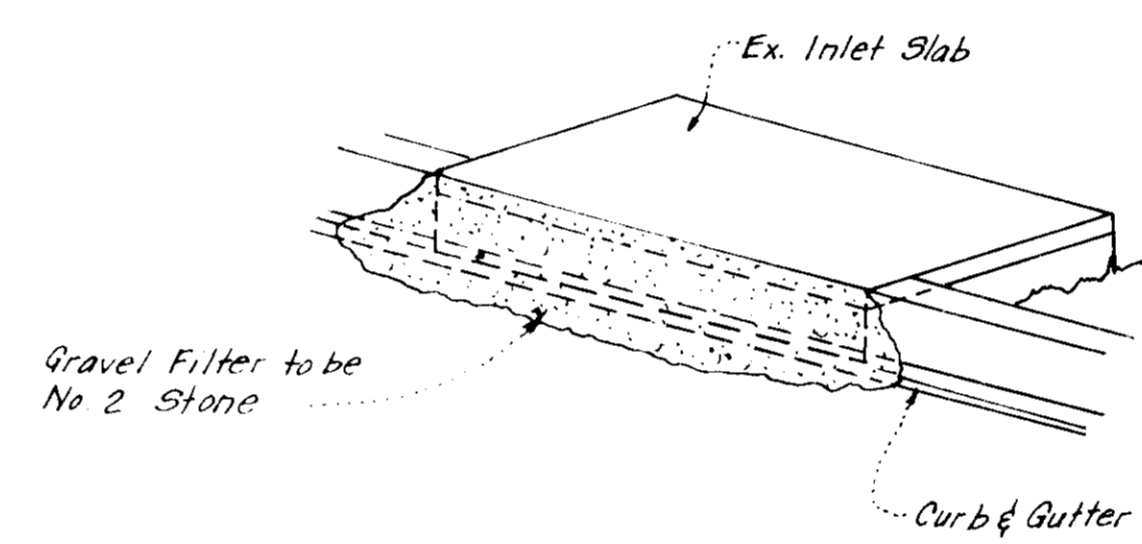
STABILIZED CONSTRUCTION ENTRANCE DETAIL
No Scale



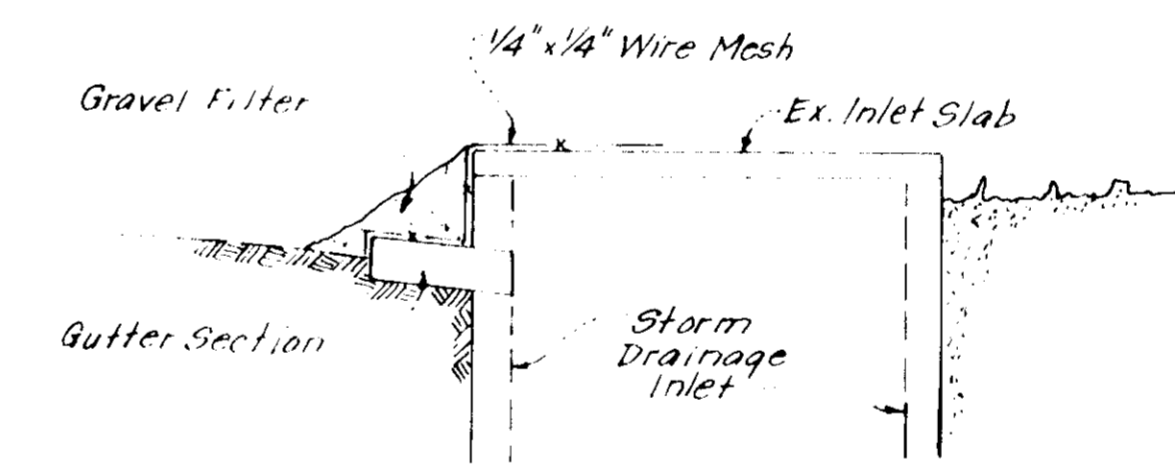
TYPICAL STRAW BALE DETAIL (S.B.D.)
No Scale



CUT DIVERSION DIKE
No Scale

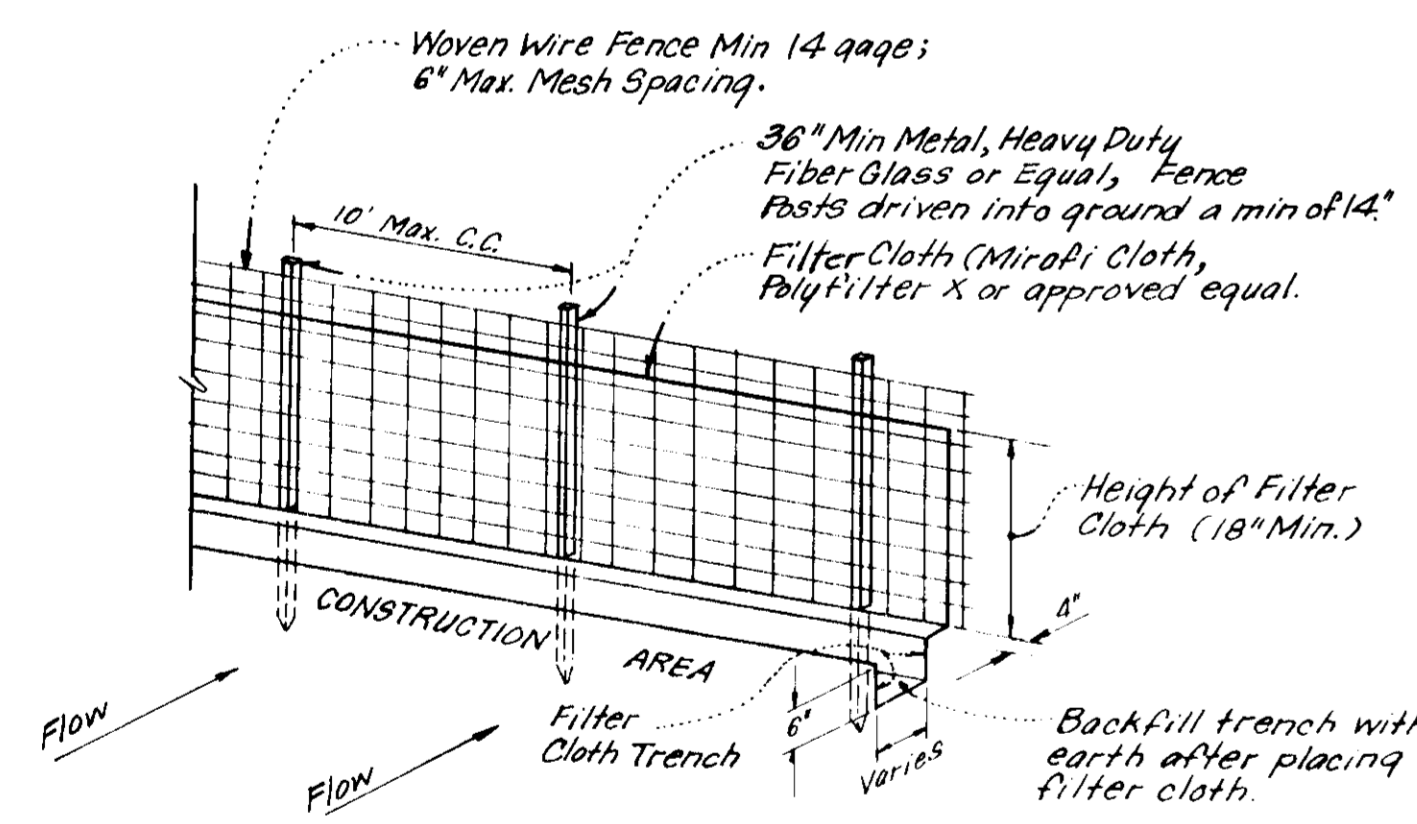


ISOMETRIC VIEW



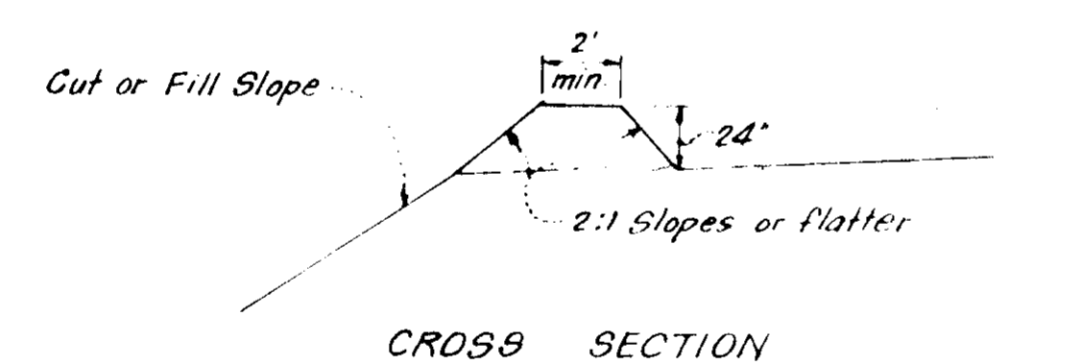
SECTION VIEW

STONE FILTER INLET PROTECTION DETAIL (S.F.I.P.)
No Scale

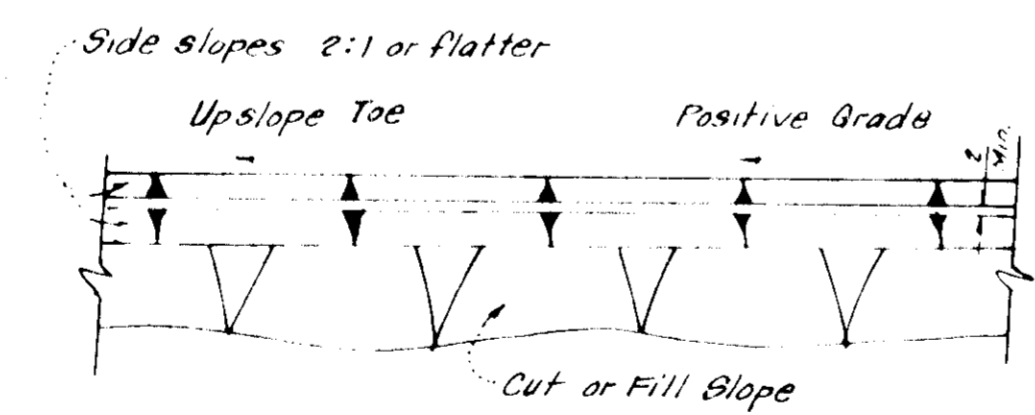


- NOTES:**
- Woven Wire Fence to be fastened securely to fence posts by use of wire ties.
 - Filter Cloth to be fastened securely to woven wire fence by use of wire ties spaced every 24" x 24".

SILT FENCE DETAIL (S.F.)
NO SCALE



CROSS SECTION



PLAN VIEW
DIVERSION DIKE (DD)
No Scale

APPROVED: FOR PUBLIC WATER AND PUBLIC SEWERAGE SYSTEMS, HOWARD COUNTY HEALTH DEPARTMENT
 HEALTH OFFICER
 APPROVED: HOWARD COUNTY OFFICE OF PLANNING & ZONING
 PLANNING DIRECTOR
 CHIEF, DIVISION OF LAND DEVELOPMENT
 APPROVED: FOR PUBLIC WATER AND PUBLIC SEWERAGE STORM DRAINAGE SYSTEMS & PUBLIC ROADS
 HOWARD COUNTY DEPARTMENT OF PUBLIC WORKS
 DIRECTOR
 CHIEF, BUREAU OF HIGHWAYS

Reviewed for W.D.S. S.C.D.
 Name
 and meets Technical Requirements
 Signature W.D.S. Date 11-16-77
 U.S. Soil Conservation Service
 THIS DEVELOPMENT PLAN IS APPROVED FOR SOIL EROSION AND SEDIMENT CONTROL BY THE HOWARD SOIL CONSERVATION DISTRICT.
 John D. Wilson Approved Date 11-16-77

ENGINEER'S CERTIFICATE
 I hereby certify that this plan for Erosion and Sediment Control represents a professional and workable plan based on my personal knowledge of the site conditions and that it was prepared in accordance with and subject to the provisions of the Howard County Conservation Code.
 Mark Joseph, Va. Pa. Conservation Council 7-7-77 Date
 Engineer's Certificate
 I hereby certify that this plan for Erosion and Sediment Control represents a professional and workable plan based on my personal knowledge of the site conditions and that it was prepared in accordance with and subject to the provisions of the Howard County Conservation Code.
 G. Nelson Clark 7-7-77 Date

STATE OF MARYLAND
 PROFESSIONAL ENGINEER
 CLARK • FINEFROCK & SACKETT
 ENGINEERS • PLANNERS • SURVEYORS
 11215 LOCKWOOD DRIVE SILVER SPRING, MARYLAND 20904 (301) 993-3400
 OWNER: HOWARD RESEARCH & DEVELOPMENT CORP.
 The Rouse Co. Bldg.
 Columbia, Md 21044
 DATE: July, 1977

DESIGNED D.A.B.	SITE DEVELOPMENT PLAN SEDIMENT & EROSION CONTROL PLAN PARCEL D-4 COLUMBIA VILLAGE OF OWEN BROWN SECTION 1 AREA 1 6TH ELECTION DISTRICT HOWARD COUNTY, MARYLAND	SCALE As Shown
DRAWN K.I.W.		5 of 5
CHECKED G.N.C.		JOB NO.
DATE July, 1977		FILE NO. 1253-SE
		SDP-78-09c HC-293,1273-X

APPROVED
 PLANNING BOARD
 OF HOWARD COUNTY
 DATE: 10-26-77