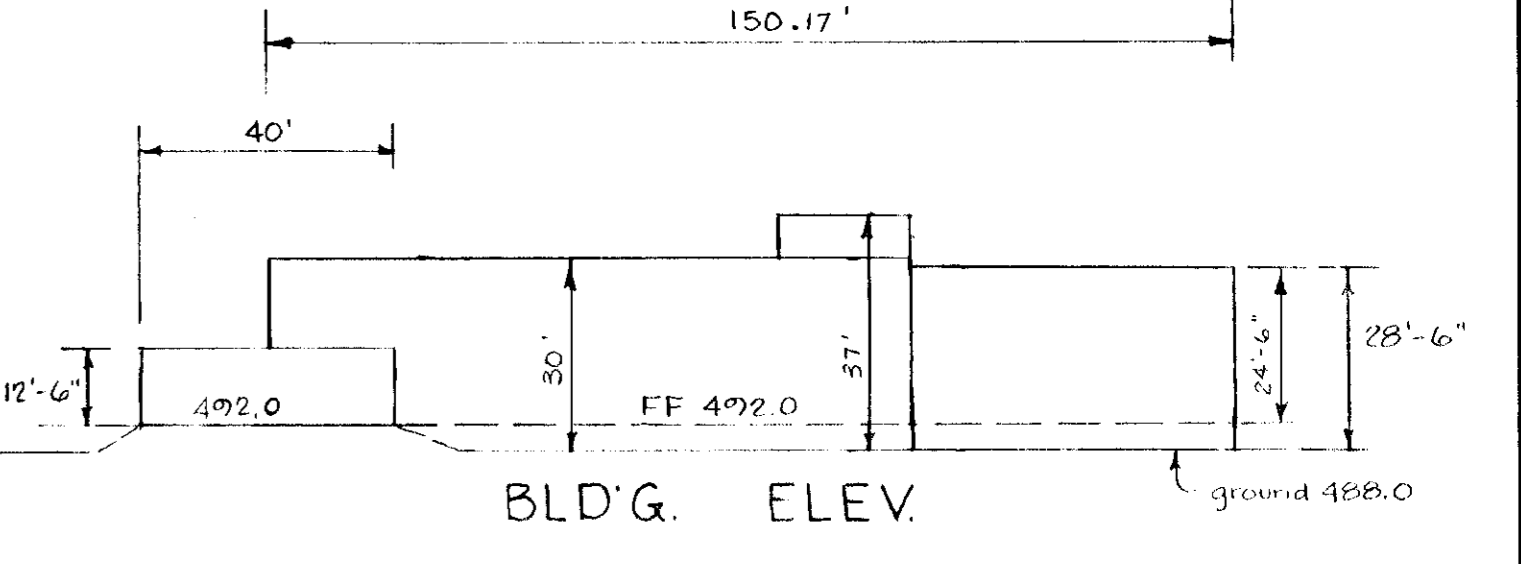


- LEGEND**
- W — PROPOSED 8" WATER MAIN
 - 12" — PROPOSED INLET & 12" RCCP
 - 3" — FIRE HYDRANT (EXISTING OR PROPOSED)
 - 12" — WATER VALVE
 - 8" — 8" & 7" E
 - - - 488 - - - EXIST. CONTOUR
 - [---] PROPOSED CONTOUR



- NOTE**
- Construction proposed within 8 feet inches laterally from the center line of the railroad track meets the requirements of the Maryland State Public Service Commission order No 50158.
 - Design requirements for handicapped access conform to Requirements of State of Md. "Design of Barrier Free Facilities" (1976)

SITE ANALYSIS

AREA - 3.819 Ac.
 BUILDING - 0.32 Ac.
 ROADS & DRIVES - 1.10 Ac.
 % OPEN SPACE - 62.8 %

NUMBER OF EMPLOYEES - 24, including 2 Office Emp.
 RETAIL SPACE - 0
 PARKING SPACES REQUIRED - 28 (including 2 Handicapped Spaces)
 PARKING SPACES AVAILABLE - 28 (including 2 Handicapped Spaces)
 ZONING - M2
 INTENDED USE OF BLDG. - PACKAGING PLANT
 RETAIL SALES AREA - NONE

Owner:
 Estate of Mervin G. Ellingsworth
 % Mercantile Safe Deposit and Trust Co.
 2 Hopkins Plaza
 Baltimore, Maryland 21203

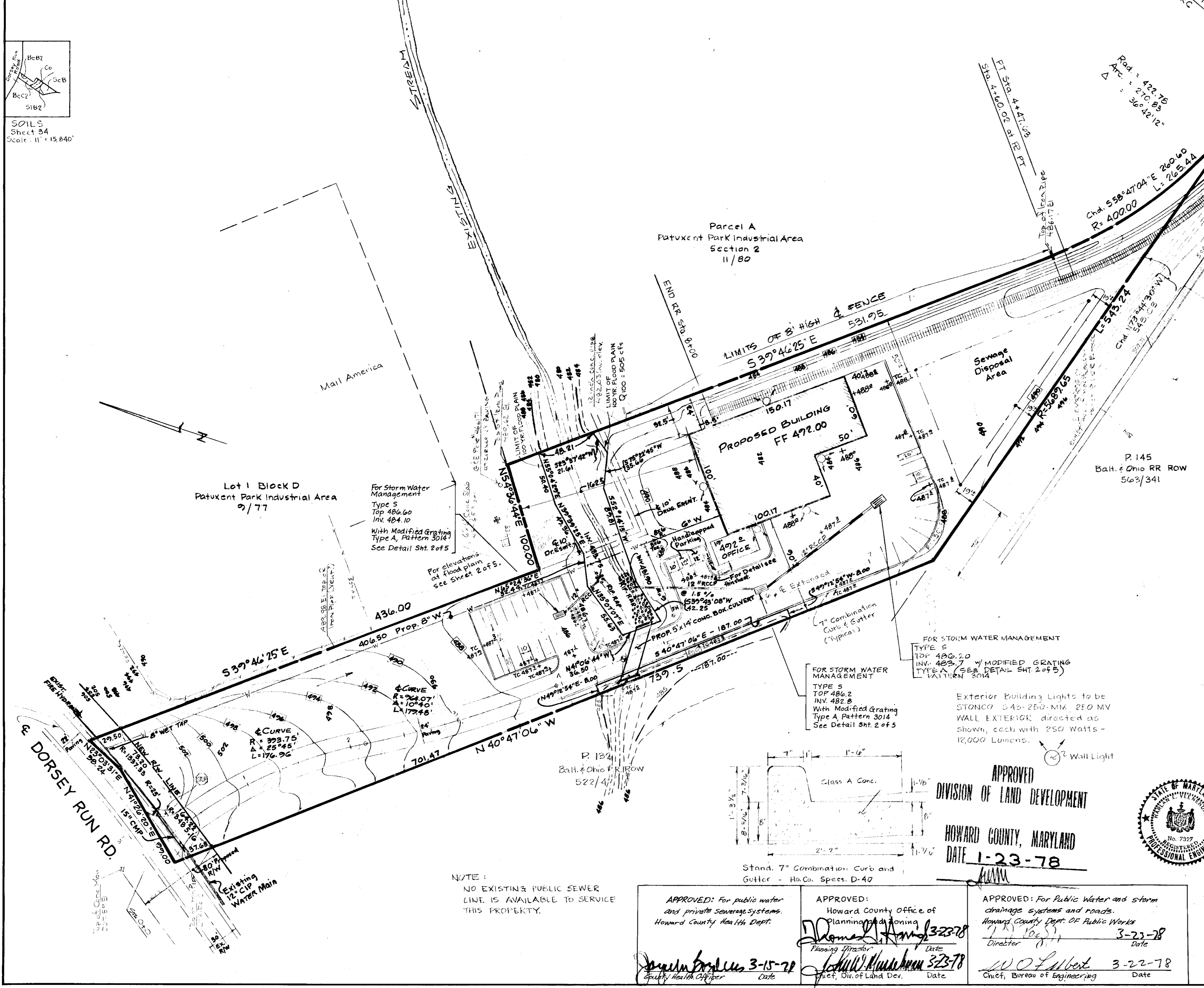
12-15-77	4	Ho. Co. Comments dated 11-29-77
11-18-77	5	REP. RAP - 2" BOX CULVERT
11-2-77	4	General Revisions
10-20-77	3	General Revisions

Rev Date	Rev No.	Revision Description
9-29-77	2	GENERAL REVISIONS
6-1-77	1	Revised for Submittal

RICHARD P. BROWNE ASSOCIATES
 ENGINEERS SURVEYORS PLANNERS ARCHITECTS
 COLUMBIA, MD. WAYNE, N. J.

SITE AND UTILITY PLAN
 PARCEL E PATUXENT INDUSTRIAL PARK
 SECTION 1
 Tax Map 48 Parcel No. 109
 1st Election District

Des. By WC	Scale 1" = 50'	Dwg. No. 1 of 5
Drn. By M.S. and M.K.	Date 5-20-76	Proj. No. 4110
Chk. By E.A.C.	Approved	



APPROVED
 DIVISION OF LAND DEVELOPMENT
 HOWARD COUNTY, MARYLAND
 DATE 1-23-78

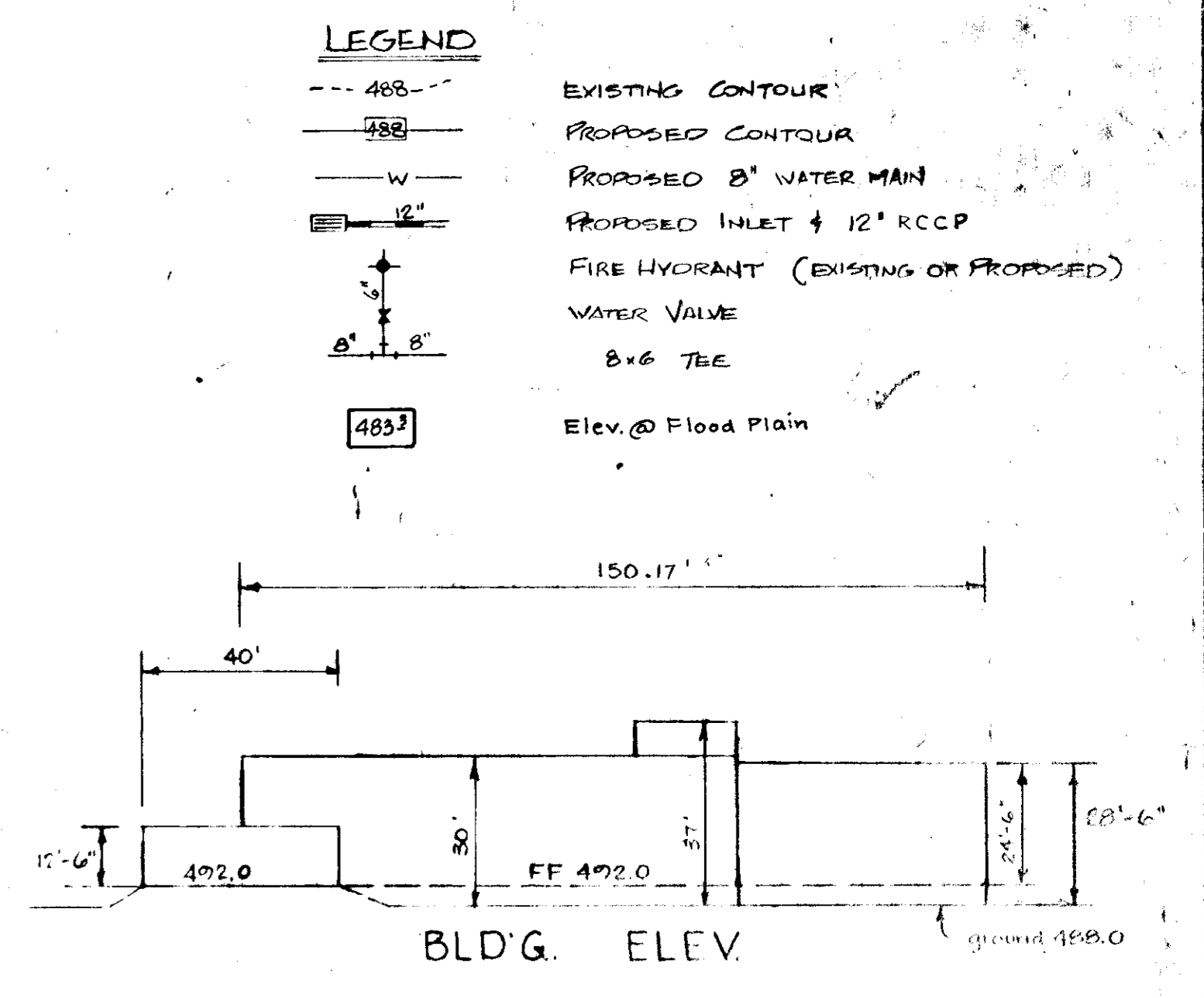
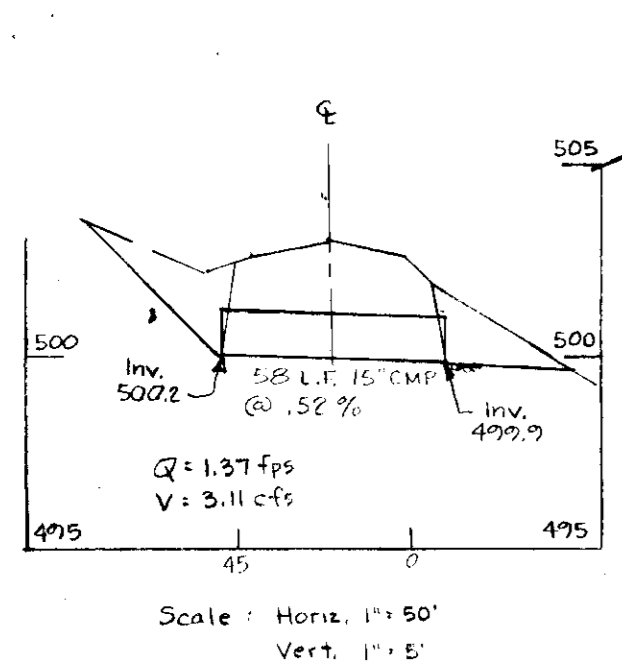
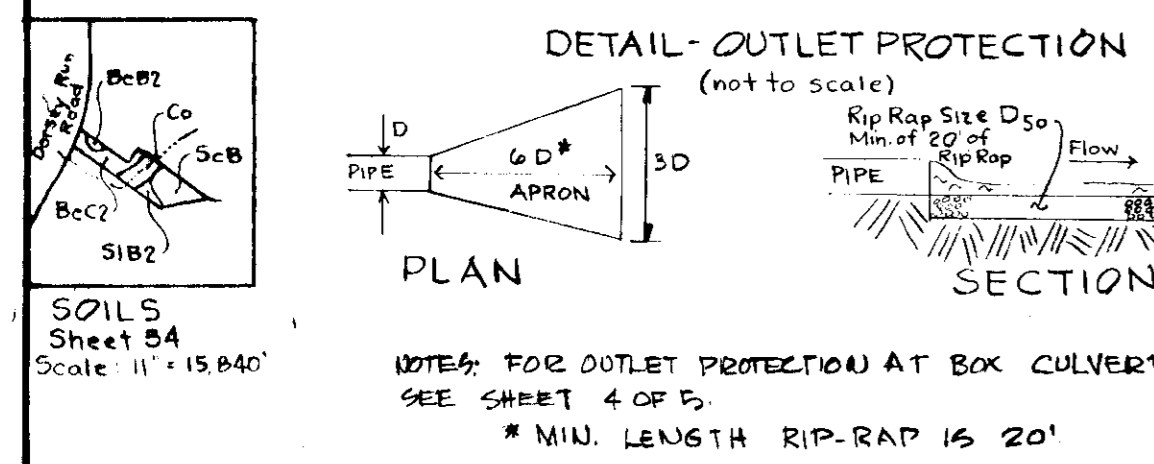
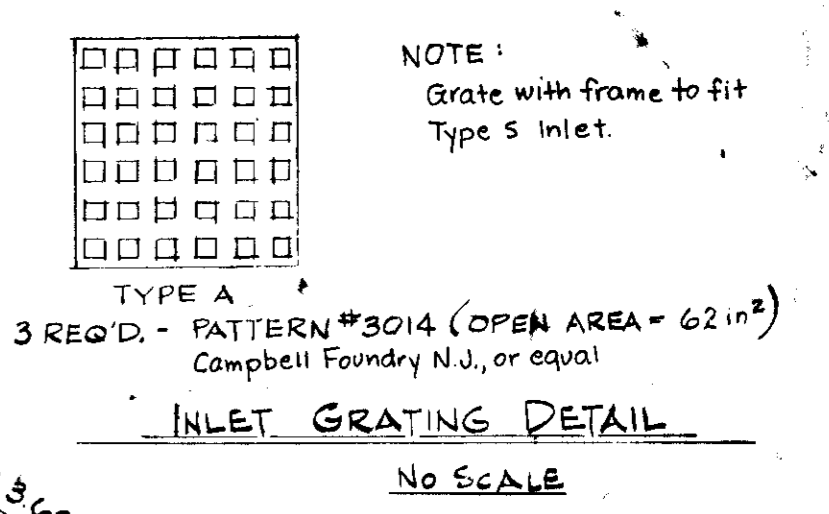
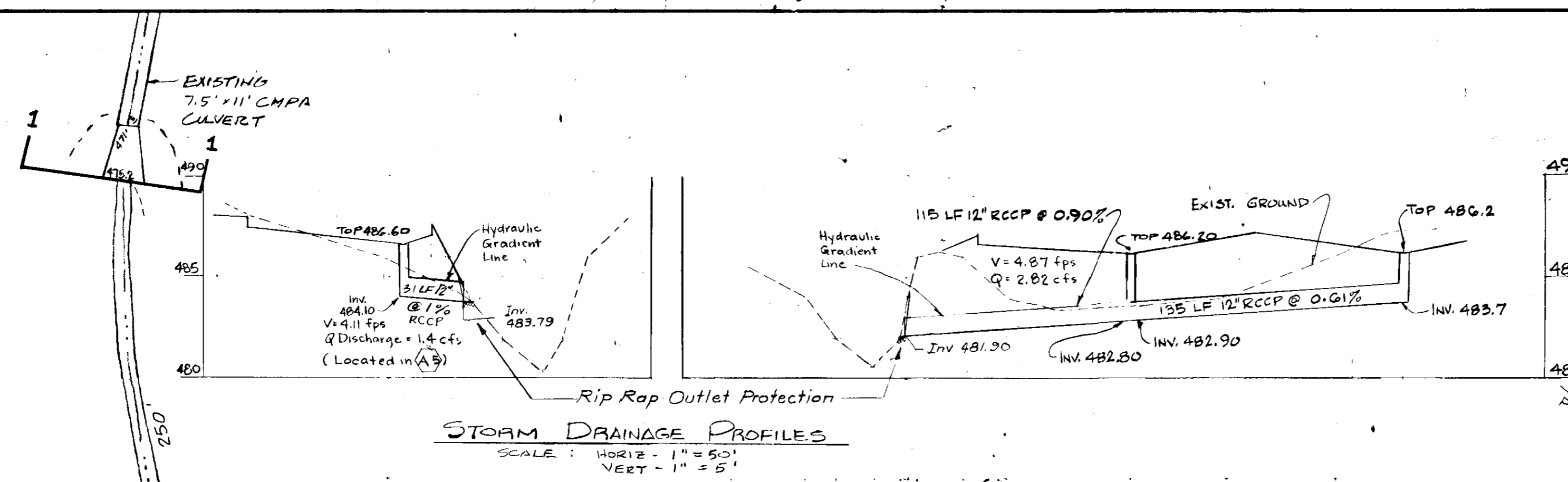
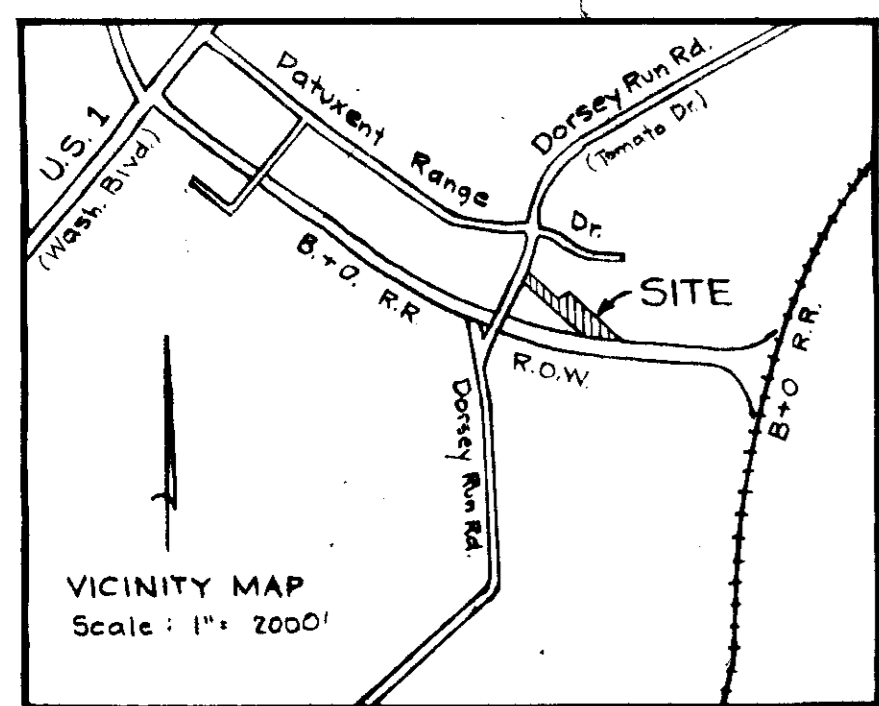


APPROVED: For public water and private sewerage systems. Howard County Health Dept. *Richard P. Browne* 3-15-78

APPROVED: Howard County Office of Planning and Zoning. *John W. Munchman* 3-23-78

APPROVED: For Public Water and storm drainage systems and roads. Howard County Dept. of Public Works. *W. O. Lambert* 3-22-78

RICHARD P. BROWNE ASSOC.
 10227 Wincopin Circle
 American City Bldg. Suite 212
 Columbia, Md. 21044



APPROVED

DEPARTMENT OF PLANNING & DEVELOPMENT

HOWARD COUNTY, MARYLAND

DATE 1-23-78

CHINA

SITE ANALYSIS

AREA - 3.81² Ac.

BUILDING - .32 Ac.

ROADS & DRIVES - 1.1 Ac.

% OPEN SPACE = 62.8%

NUMBER OF EMPLOYEES - 24, including 2 office Emp.

RETAIL SPACE - 0

PARKING SPACES REQUIRED - 28

PARKING SPACES AVAILABLE - 28

ZONING - M2

INTENDED USE OF BLDG. - PACKAGING PLANT

RETAIL SALES AREA - NONE

Owner:

Estate of Mervin G. Ellingsworth

% Mercantile Safe Deposit and Trust Co.

2 Hopkins Plaza

Baltimore, Maryland 21203

12-15-77	5	Ho. Co. Comments dated 11-29-77
11-2-77	4	Gen. Rev.
10-20-77	3	GENERAL REVISION
9-29-77	2	GENERAL REVISION
6-1-77	1	Revised for Submission
Rev Date	Rev No.	Revision Description

RICHARD P. BROWNE ASSOCIATES

ENGINEERS SURVEYORS PLANNERS ARCHITECTS

COLUMBIA, MD. WAYNE, N.J.

Record Plat No. 228 # 3955

DRAINAGE PLAN

PARCEL E PATUXENT INDUSTRIAL PARK

SECTION 1

Tax Map 48 District 6, G.G. 543 Parcel No. 109

1st Election District VP-77-43 Howard County, Md.

Des. By W.C. Scale 1" = 50' Dwg. No. 2-01-1

Dir. By M.S. and M.X. Date 5-20-78 Proj. No.

Chk. By E.A.C. Approved 4110

APPROVED: For Public Water and Private Sewerage Systems Howard County Health Dept.

APPROVED: Howard County Office of Planning and Zoning

APPROVED: For Public Water and storm drainage systems and roads. Howard County Dept. of Public Works

3-15-78 Date

3-23-78 Date

3-27-78 Date

3-27-78 Date

3-27-78 Date

NOTE: NO EXISTING PUBLIC SEWER LINE IS AVAILABLE TO SERVICE THIS PROPERTY.

APPROVED: This Development Plan is Approved For Soil Erosion and Sediment Control By The Howard Soil Conservation District

WES EAGER 3-6-78
Ho. S.C.D. Date

Reviewed for HOWARD SCD and meets technical requirements.

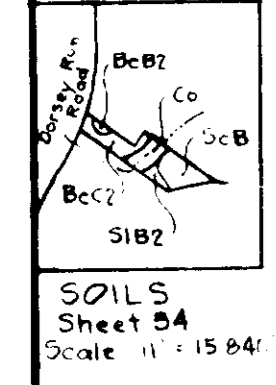
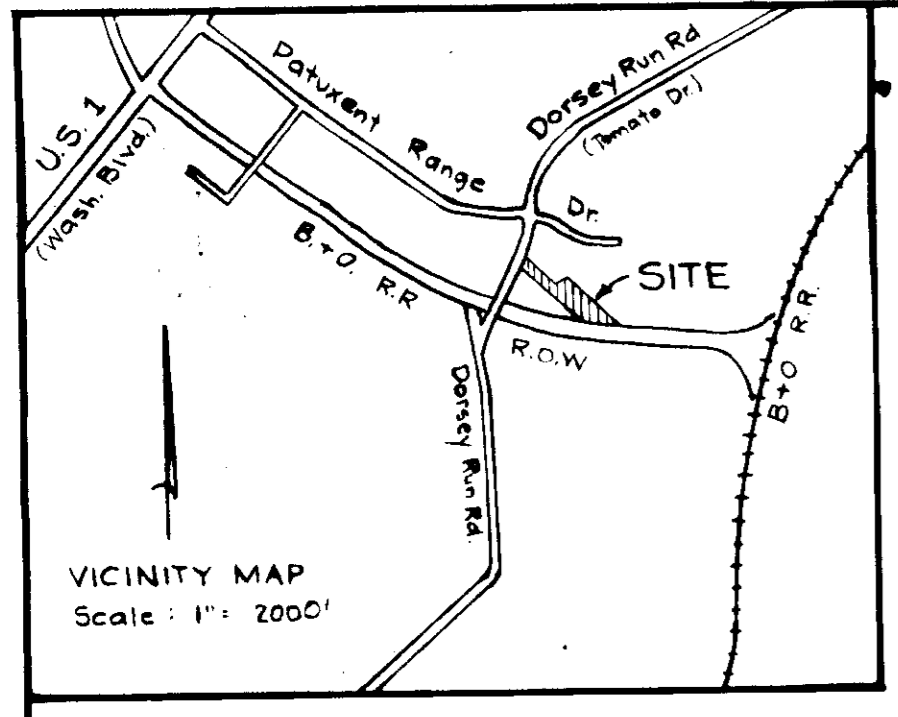
C. Wayne Ray 3/6/78
U.S. Soil Conservation Service Date

BY THE DEVELOPER:
"I certify that all development and/or construction will be done according to this plan of Development and for Erosion and Sediment Control, and also authorize periodic on-site inspection by the Ho. Co. S.C.D. or other authorized agents as are deemed necessary. Deviation from this plan will not be made unless authorized by Ho. Co. S.C.D."

R. F. Fahren 10-13-77
Signature Date

BY THE ENGINEER:
"I certify that this plan of Erosion and Sediment Control represents a practical and workable plan based on my personal knowledge of the site conditions and that it was prepared in accordance with the requirements of the Ho. Co. S.C.D."

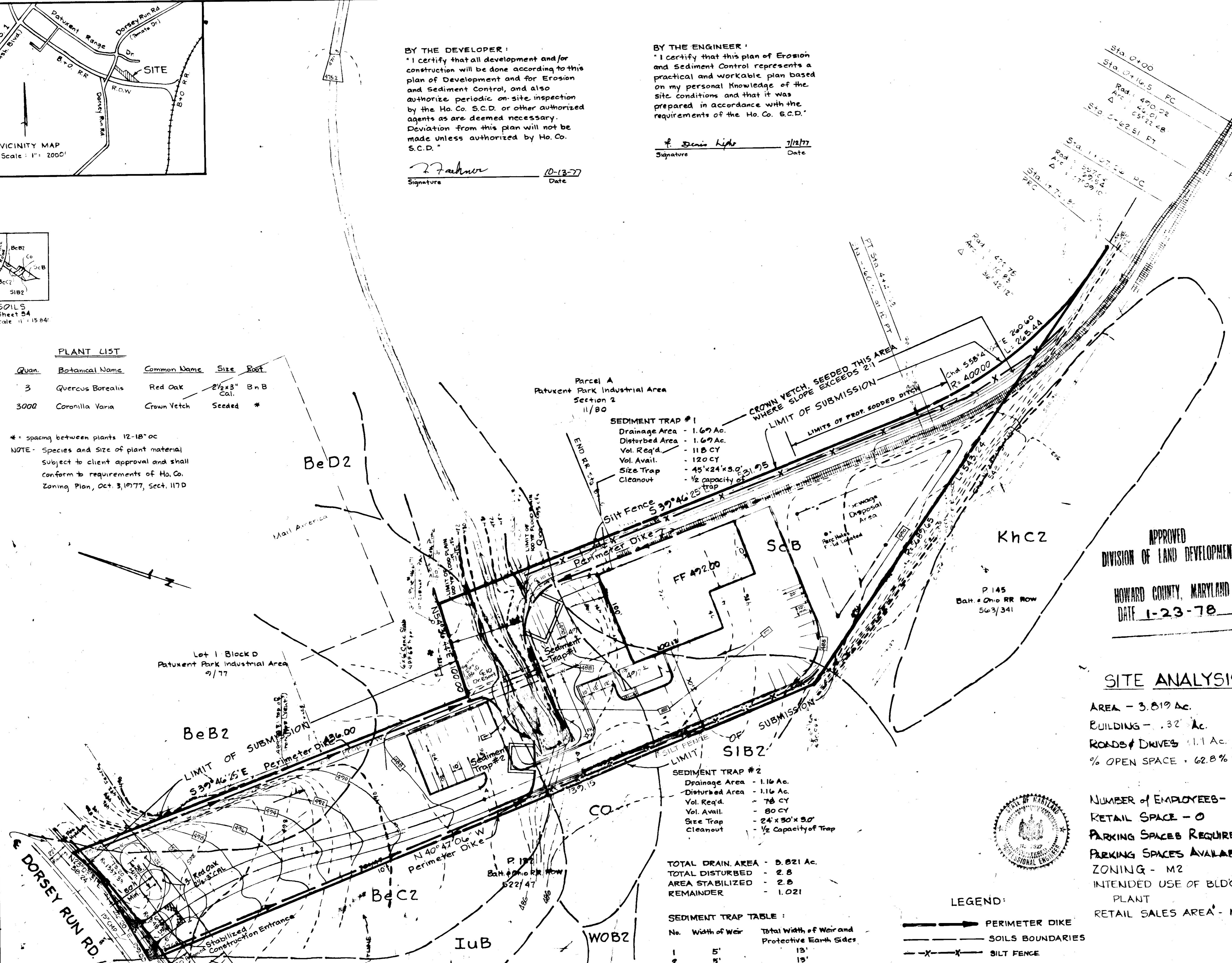
J. Dennis Lips 3/1/77
Signature Date



PLANT LIST

Quan.	Botanical Name	Common Name	Size	Root
3	Quercus Borealis	Red Oak	2 1/2 x 3"	B n B Cal.
3000	Coronilla Varia	Crown Yetch	Seeded	*

* spacing between plants 12-18" oc
NOTE- Species and Size of plant material Subject to client approval and shall conform to requirements of Ho. Co. Zoning Plan, Oct. 3, 1977, Sect. 117D



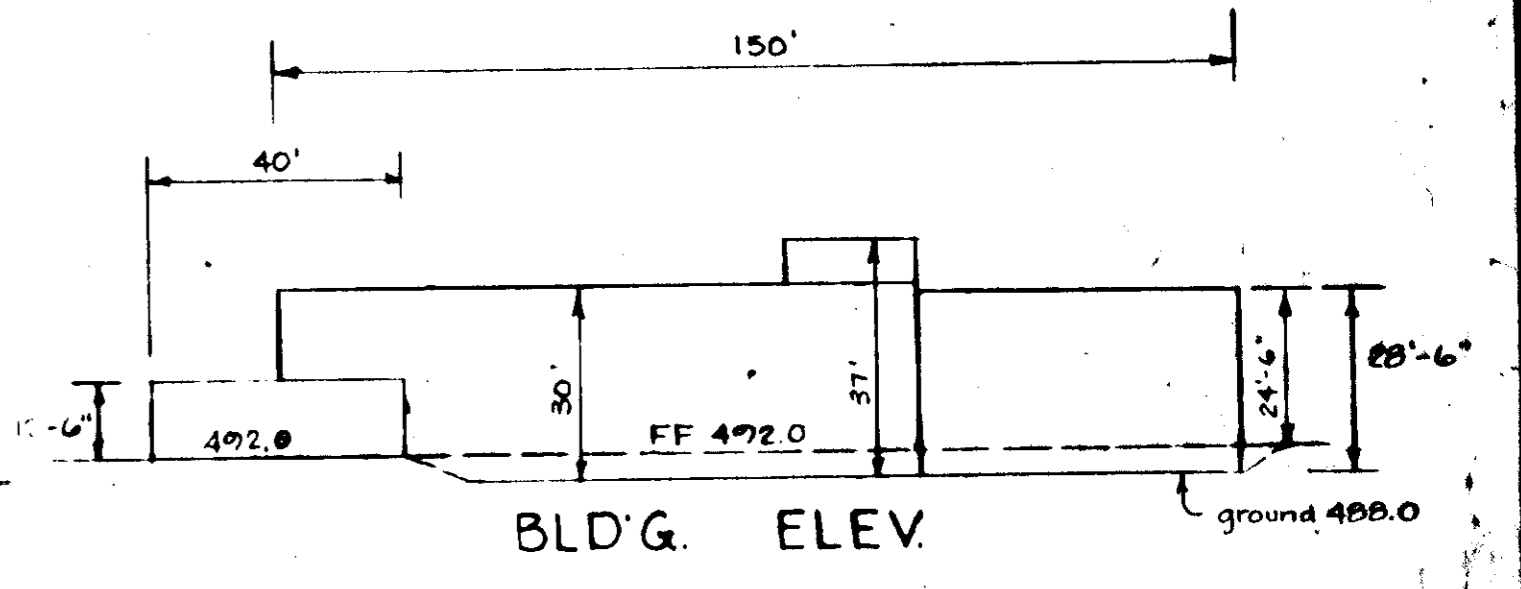
NOTE:
SEE SHEET 5 OF 5 FOR SCS DETAILS. THE FOLLOWING DETAILS AND NOTES APPLY:

NOTES # 1. General Notes
2. Sediment and Soil Erosion Control Notes
3. Temporary Seeding Specifications
4. Permanent Seeding Specifications
5. Mulching

DETAILS
A. Stone Outlet Sediment Trap
D. Perimeter Dike
H. Stabilized Construction Entrance

CONSTRUCTION SEQUENCE:

1. Construct Perimeter Dikes, Swales and Sediment Traps.
2. Grade and construct Parking Lots, Driveway & Building.
3. Stabilized Non-Paved and Built-On areas.
4. Remove Dikes, Fill Swales and Sediment Traps.
5. Stabilize areas formerly used for above.



SITE ANALYSIS

AREA - 3.819 Ac.
BUILDINGS - .32 Ac.
ROADS & DRIVES - 1.1 Ac.
% OPEN SPACE - 62.8%

Owner:
Estate of Mervin G. Ellingsworth
% Mercantile - Safe Deposit and Trust Co.
2 Hopkins Plaza
Baltimore, Maryland 21208

NUMBER OF EMPLOYEES - 24, including 2 Office Emp.
RETAIL SPACE - 0
PARKING SPACES REQUIRED - 28
PARKING SPACES AVAILABLE - 28
ZONING - M2
INTENDED USE OF BLDG. - PACKAGING PLANT
RETAIL SALES AREA - NONE

Rev. Date	Rev. No.	Revision Description
12-15-77	0	Ho. Co. Comments dated 11-29-77
11-2-77	1	Gen. Rev.
10-20-77	6	FLOOD PLAIN EASEMENT
9-29-77	5	SILT FENCE
8-29-77	4	new road alignment
7-12-77	3	Revise Detail A
6-17-77	2	Revised as per comments
6-1-77	1	Revised for Submittal

RICHARD P. BROWNE ASSOCIATES
COLUMBIA, MD.

ENGINEERS SURVEYORS PLANNERS ARCHITECTS
WAYNE, N. J.

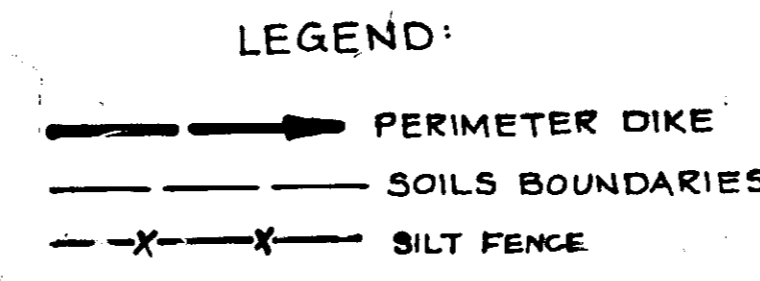
SEDIMENT TRAP #1
Drainage Area - 1.69 Ac.
Disturbed Area - 1.69 Ac.
Vol. Req'd. - 118 CY
Vol. Avail. - 120 CY
Size Trap - 45' x 24' x 3.0' @ 25'
Cleanout - 1/2 capacity of Trap

SEDIMENT TRAP #2
Drainage Area - 1.16 Ac.
Disturbed Area - 1.16 Ac.
Vol. Req'd. - 78 CY
Vol. Avail. - 80 CY
Size Trap - 24' x 30' x 3.0'
Cleanout - 1/2 capacity of Trap

TOTAL DRAIN AREA - 5.821 Ac.
TOTAL DISTURBED - 2.8
AREA STABILIZED - 2.8
REMAINDER - 1.021

SEDIMENT TRAP TABLE:

No.	Width of Weir	Total Width of Weir and Protective Earth Sides
1	5'	13'
2	5'	13'



NOTE:
NO EXISTING PUBLIC SEWER LINE IS AVAILABLE TO SERVICE THIS PROPERTY.

APPROVED: For Public Water and Private Sewerage Systems.
Howard County Health Dept.

J. J. [Signature] 3-15-78
County Health Officer Date

APPROVED: Howard County Office of Planning and Zoning.
Howard County Dept. of Public Works

[Signature] 3-23-78
Planning Director Date

APPROVED: For Public Water and Storm Drainage Systems and Roads.
Howard County Dept. of Public Works

[Signature] 3-23-78
Director Date

RICHARD P. BROWNE ASSOC.
10227 Wincopin Circle
American City Bldg. Suite 212
Columbia, Md. 21044

[Signature] 3-22-78
Richard P. Browne Assoc. #7327

SEDIMENT CONTROL

SECTION 2
PARCEL E PATUXENT INDUSTRIAL PARK
Tax Map 48 Deed Ref. 666/548 Parcel No. 109
Election District 10-11-93 Howard County, Md.

Des. By WC Scale 1" = 50' Dwg. No. 3 of 5
Dwn. By M.S. and M.K. Date 5-20-76 Proj. No.
Chk. By E.A.C. Approved 4110

SDP-77-103

APPROVED: For Public Water and Private Sewerage Systems
Howard County Health Dept.
[Signature] 3-23-78
Date

APPROVED: Howard County Office of Planning and Zoning
[Signature] 3-23-78
Date

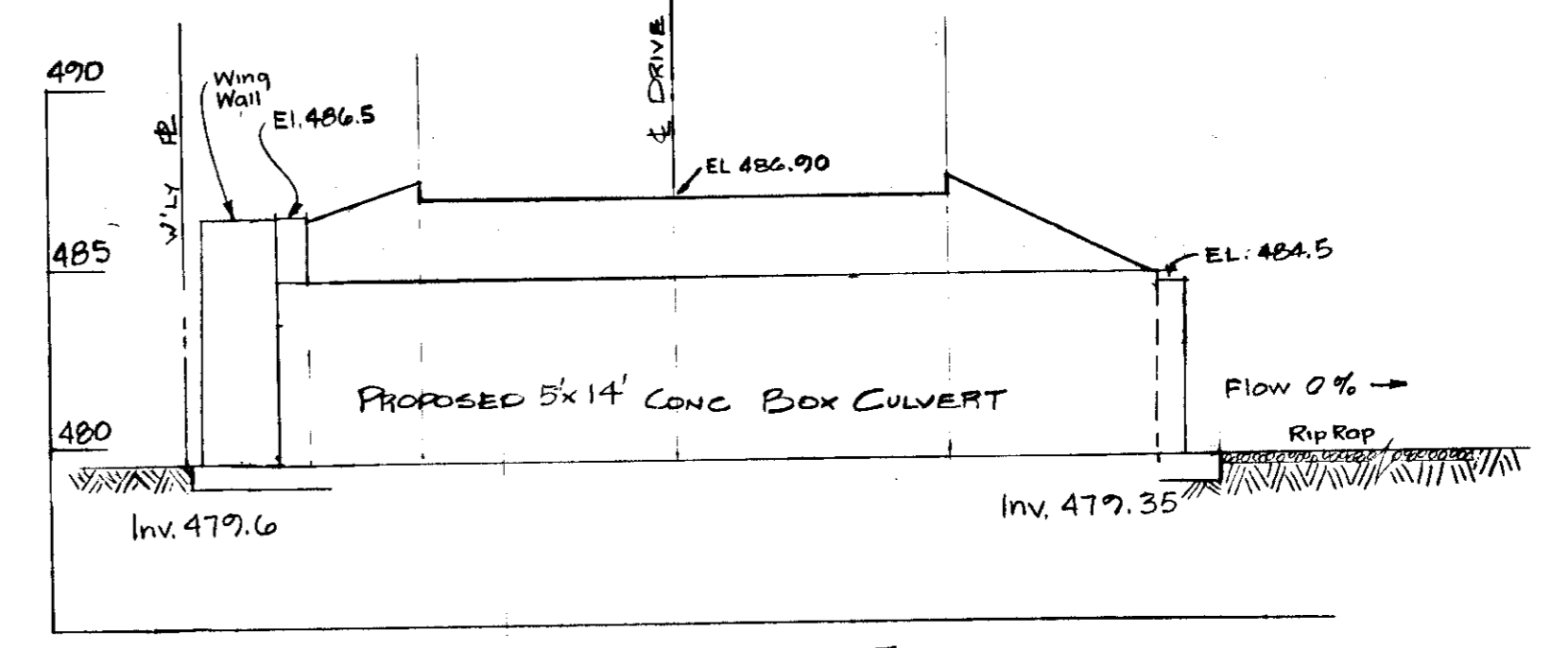
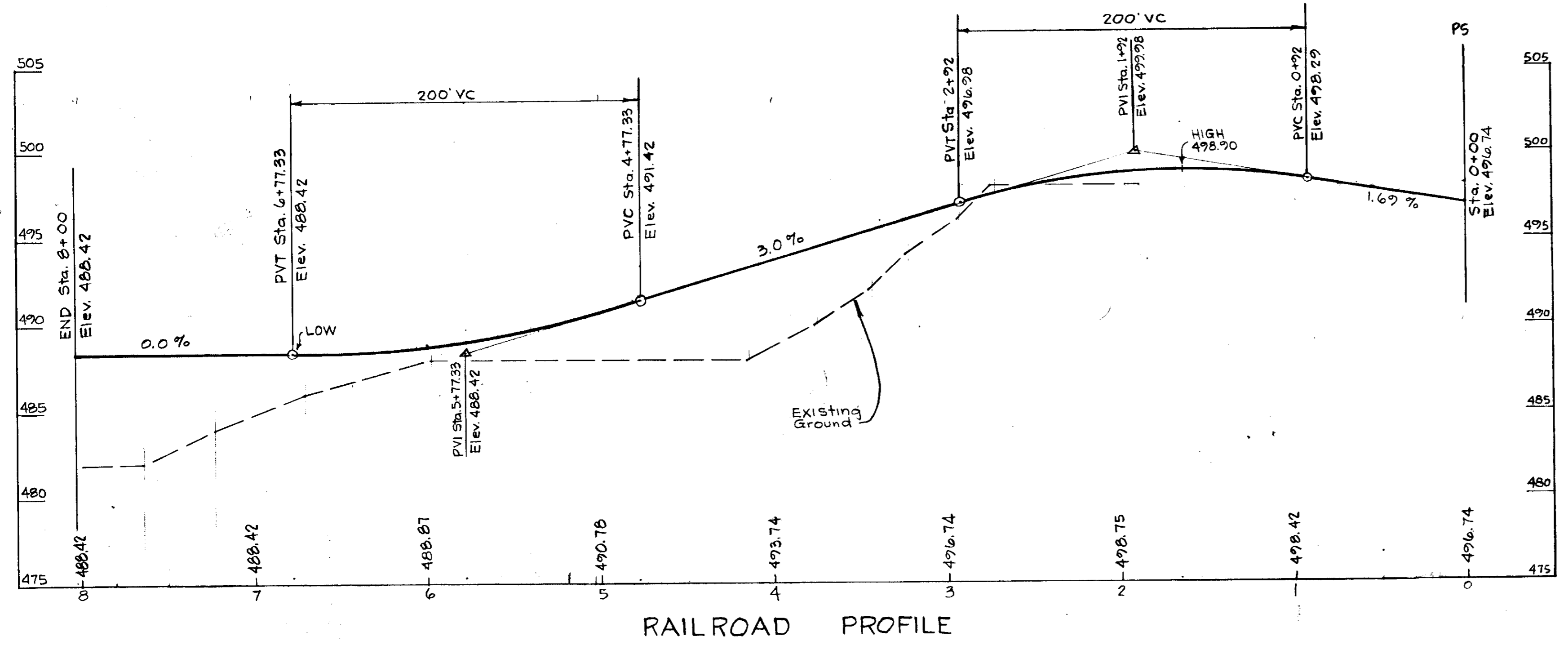
APPROVED: For Public Water and Storm Drainage Systems and Roads
Howard County Dept. of Public Works
[Signature] 3-23-78
Date

[Signature] 3-22-78
Date

THIS DEVELOPMENT PLAN IS APPROVED FOR SOIL EROSION AND SEDIMENT CONTROL BY THE HOWARD SOIL CONSERVATION DISTRICT.

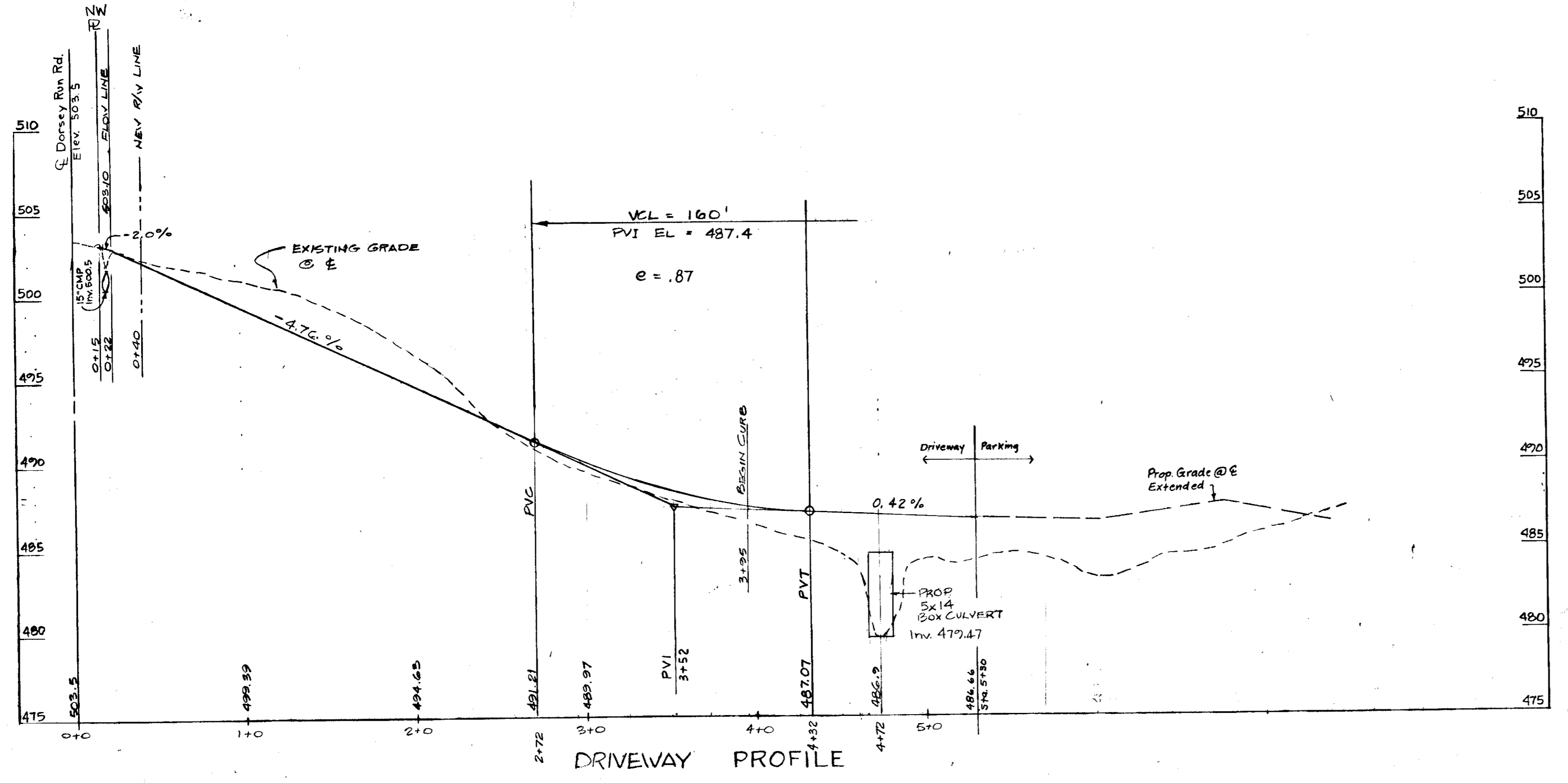
Approved *[Signature]* Date 3-6-78
Howard S.C.D.

Reviewed for *[Signature]* S.C.D. Name
and meets Technical Requirements
[Signature] Date 3/6/78
Signature
U.S. Soil Conservation Service



NOTE:
5" MAX. DIA. RIP-RAP ABOVE
14" WIDE x 50' LONG ON
PLASTIC WOVEN EROSION CONTROL
CLOTH

CULVERT PROFILE
Scale: Horiz. 1" = 10'
Vert. 1" = 5'



PAVEMENT DETAIL Dwg. D-B

- NOTES:
- Base will be primed in accordance with Sect. C-30-3 as provided in the Ho. Co. Rd. Construction Code and Standard Specifications.
 - Tack Coat is req'd. in accordance with Sect. C-31-4 of the Ho. Co. Rd. Construction Code and Stand. Specs.
 - All material and construction methods shall be in accordance with Ho. Co. Rd. Construction Code.
 - Paving Section for private parking areas and private access drive.

BITUMINOUS CONC. SURFACE	1 1/2"
BITUMINOUS CONC. BINDER	5" (Gravel Mix)
CRUSHER RUN BASE	6"

APPROVED
DIVISION OF LAND DEVELOPMENT

HOWARD COUNTY, MARYLAND
DATE 1-23-78
[Signature]



RICHARD P. BROWNE ASSOC.
10227 Winecup Circle
American City Bldg. Suite 212
Columbia, Md. 21044

[Signature]
Harlan E. Yencendaal #7327

OWNER:
Estate of Mervin & Ellingsworth
5% Mercantile Safe Deposit and
Trust Co.
2 Hopkins Plaza
Baltimore, Md. 21203

12-15-77	5	Ho. Co. Comments dated 11-29-77
11/16/77	4	RIP RAP @ BOX CULVERT
11-2-77	3	Gen. Revisions

9-29-77	2	DAVEWAY & CULVERT PROFILE
6-1-77	1	Revised for submittal

RICHARD P. BROWNE ASSOCIATES
COLUMBIA, MD.

WAYNE, N. J.
ENGINEERS SURVEYORS PLANNERS ARCHITECTS

PROFILE SHEET		Parcel No. 107	
PARCEL E PATUXENT INDUSTRIAL PARK SECTION 2		Howard County, Md.	
Tax Map 48	VP-77-43	Parcel No. 107	
1st Election District		Howard County, Md.	
Des. By WC	Scale Horiz. 1" = 50' Vert. 1" = 5'	Dwg. No. 4 of 5	
Drn. By MK	Date 5-20-76	Proj. No. 4-110	
Chk. By EAC	Approved		

SDP-77-103

