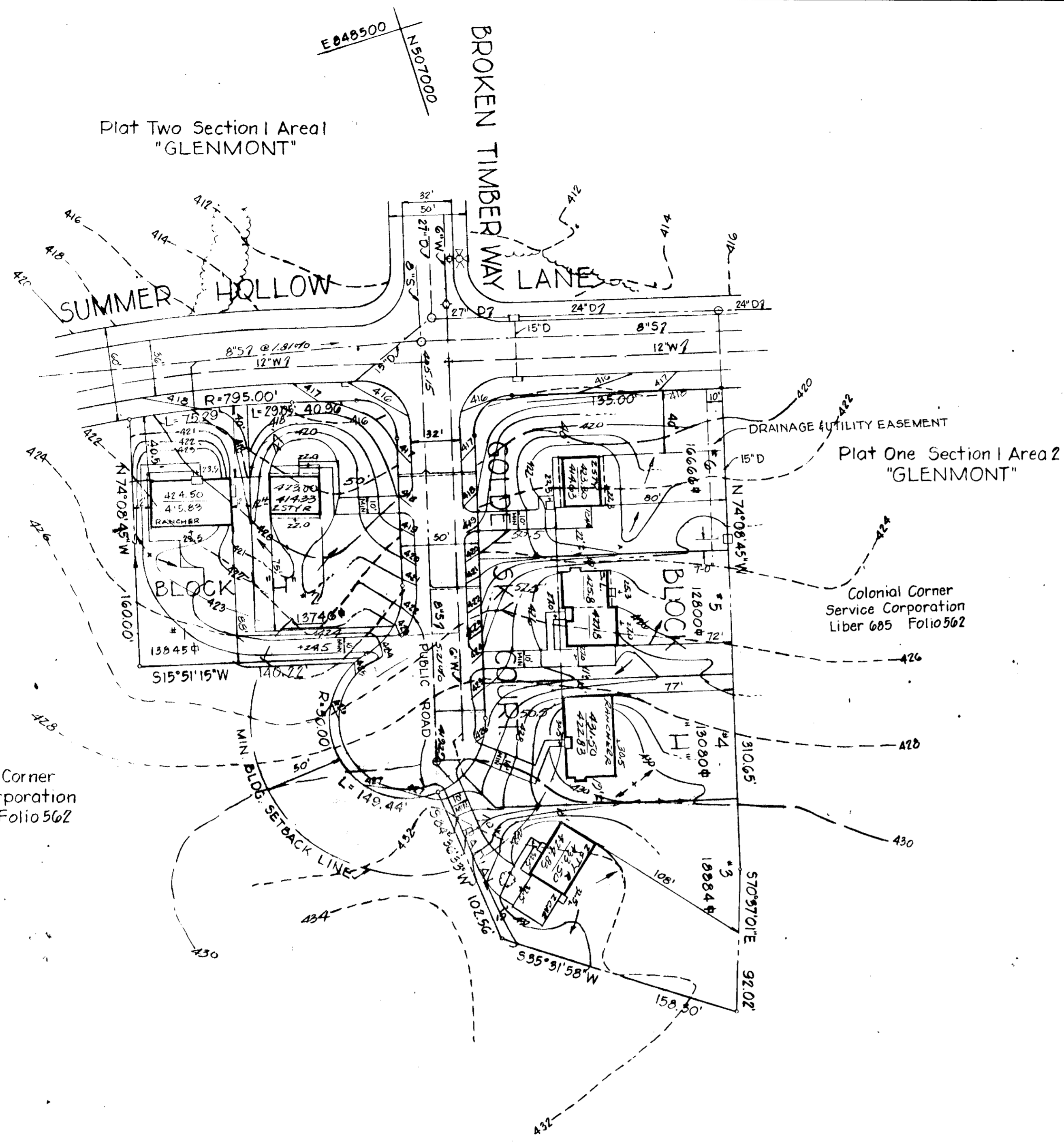


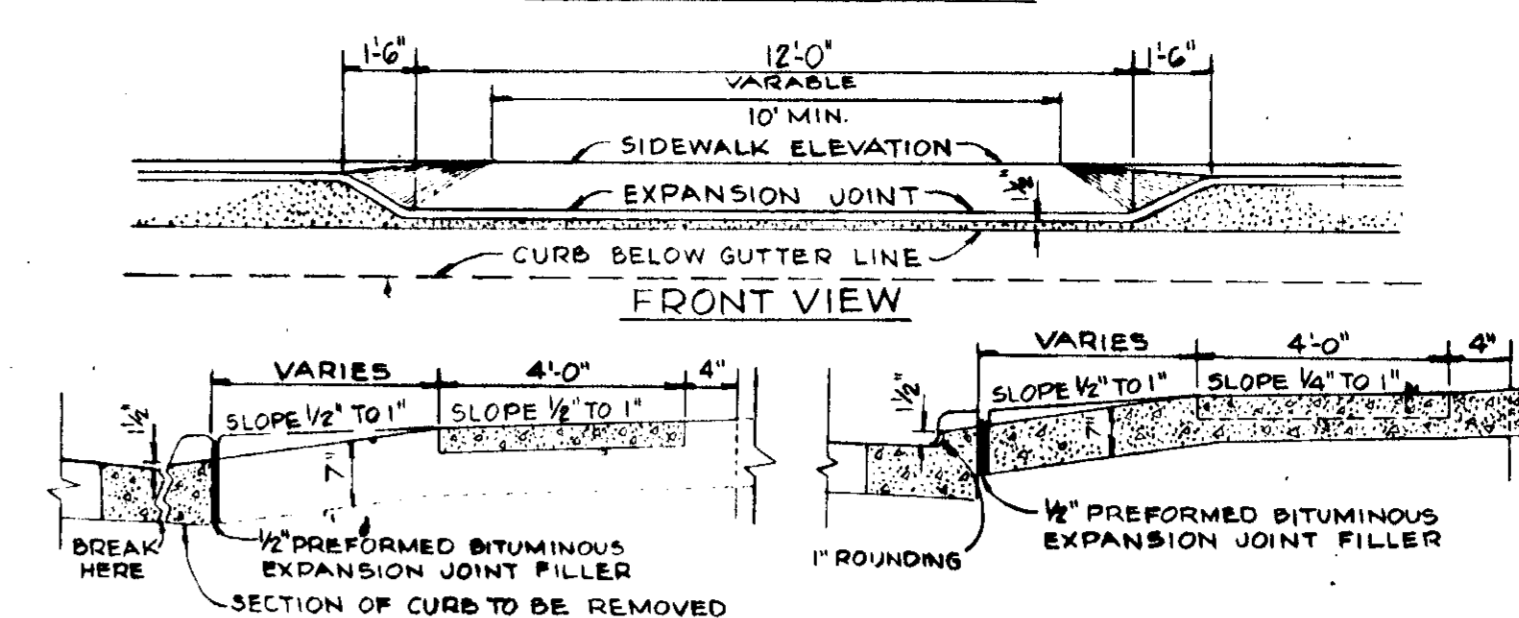
Plat Two Section I Area 1
"GLENMONT"



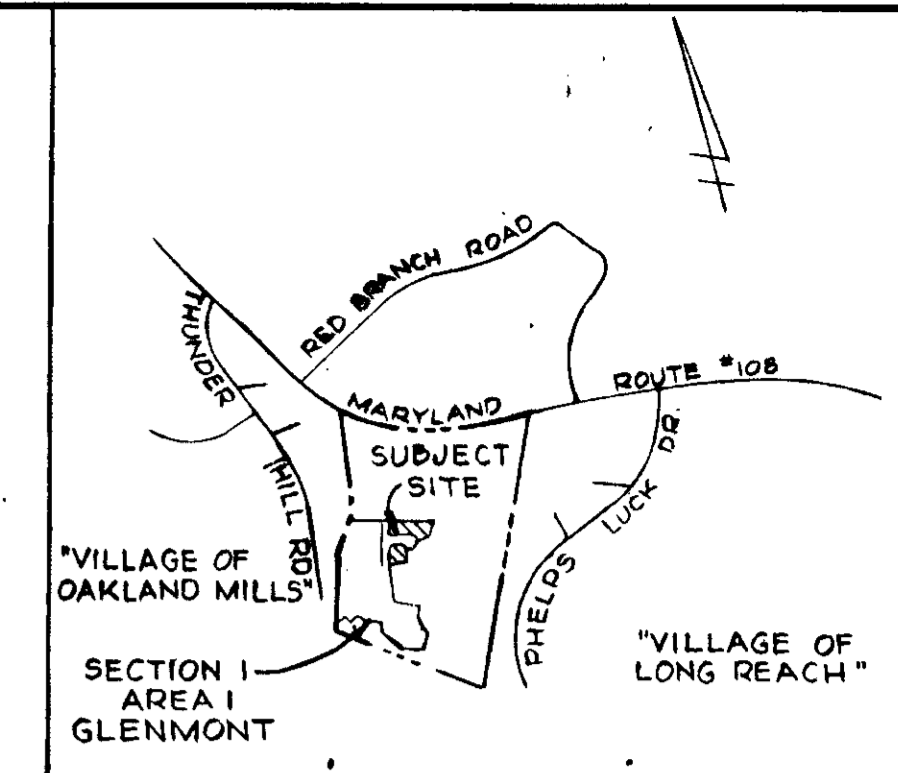
Colonial Corner
Service Corporation
Liber 685 Folio 562

F 849000
N 5066500

DRIVEWAY ENTRANCE



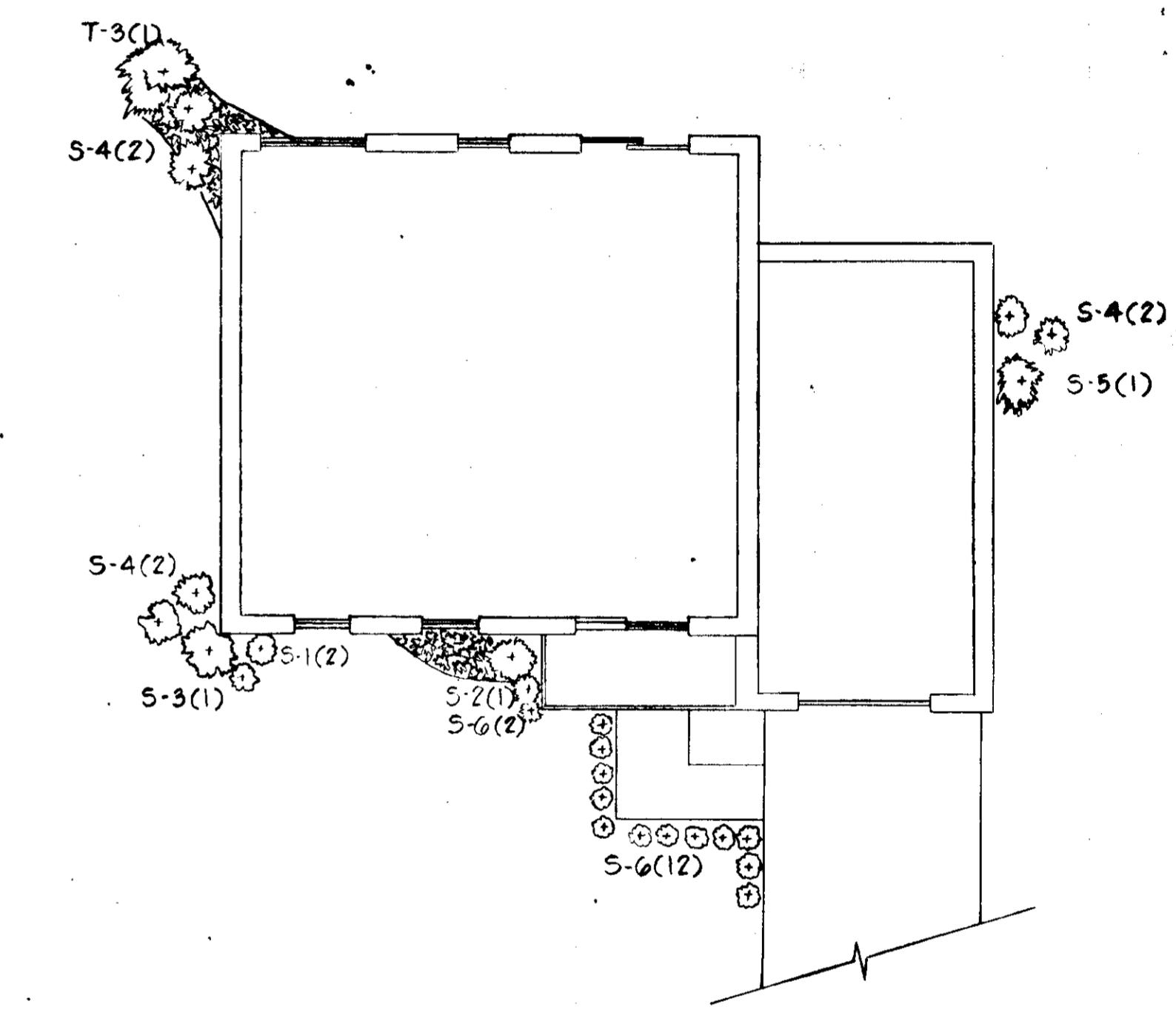
SECTION DRIVEWAY IN EXISTING CURB SECTION DRIVEWAY IN NEW CURB



VICINITY MAP
SCALE: 1"=2000'

PLANT SCHEDULE

S-1 ILEX CORNUTA BURFORDI NANA DWARF BULFORD HOLLY	15'-18"	2
S-2 ILEX "NELLIE R STEVENS"	3"	1
S-3 THUJA OCCIDENTALIS PYRAMIDALIS PYRAMICAL ARBOR VITAE	4'-5'	1
S-4 TAXUS BACCATA REPANDENS ENGLISH YEW	18'-24"	6
S-5 PYRACANTHA COCCINEA MONROVIA FIRETHORN	3'-4'	1
S-6 TAXUS CUSPIDATA NANA DWARF JAPANESE YEW	15'-18"	14-2' 1/2
T-3 PINUS THUNBERGEI	4'-5'	1

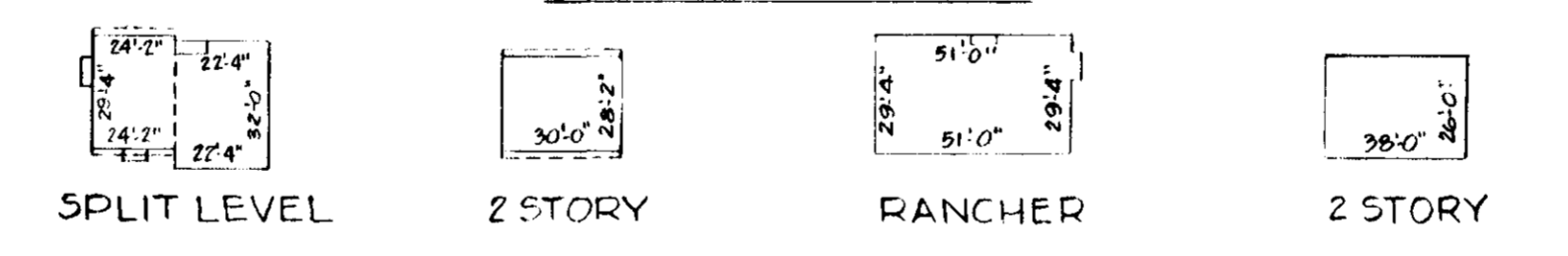


TYPICAL PLANTING PLAN

PROFILES



FLOOR PLANS



TYPICAL HOUSES

NO SCALE

GENERAL NOTES

- TAX MAP NO. 30
- TOTAL AREA 2.04 ACRES
- PUBLIC WATER AND SEWER TO BE UTILIZED.
- ALL COORDINATES ARE BASED ON MARYLAND STATE GRID SYSTEM. ELEVATIONS ARE BASED ON THE U.S. COAST AND GEODETIC SURVEY MEAN SEA LEVEL DATUM 1929.
- ALL DRIVEWAYS TO BE BUILT AS PER HOWARD CO. ROAD CONSTRUCTION CODE DRAWING D-34 PAGE 89.

SITE ANALYSIS

- ZONING R-12
- NUMBER OF LOTS SHOWN 10
- AREA INCLUDED IN THIS SUBMISSION 2.04 ACRES

APPROVED: For Public Water & Public Sewerage Systems, Howard County Health Department
James E. Baker 7-27-77
 County Health Officer Date

APPROVED: Howard County Office of Planning & Zoning
Thomas J. Hamill 7-28-77
 Planning Director Date

APPROVED: For Public Water, Public Sewerage & Storm Drainage System & Roads
 Howard County Department of Public Works
William H. ... 7-27-77
 Chief Division of Land Development Date

APPROVED: For Public Water, Public Sewerage & Storm Drainage System & Roads
 Howard County Department of Public Works
Granville M. McElwain 7/27/77
 Chief, Bureau of Highways Date

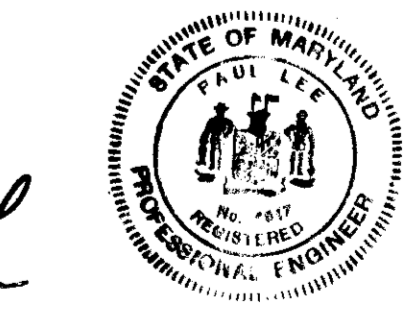
SITE DEVELOPMENT PLAN
GLENMONT

SECTION I AREA I
LOTS 1-6 BLOCK "H"

ELECTION DISTRICT GUILFORD NO. 6 HOWARD COUNTY, MD.
 SCALE: 1"=50'
 APRIL 1977
 RECORDED AS PLAT #3573 ON DECEMBER 1, 1976 AMONG THE LAND RECORDS OF HOWARD COUNTY, MARYLAND.

OWNER AND DEVELOPER
 COLONIAL CORNER SERVICE CORPORATION
 FAYETTE & ST. PAUL STREETS
 BALTIMORE, MARYLAND 21202

Paula La



MCA MCA ENGINEERING CORP.
 1030 ORDMAN, PRINCE ROAD
 BALTIMORE, MD. 21204

SHEET 1 OF 2

1-76052A W.O. 17421-C
 SDP-77-101

SEQUENCE OF OPERATION -
 1. HOWARD COUNTY BUREAU OF LICENSES, INSPECTION & PERMITS TO BE NOTIFIED EARLY IN ADVANCE OF ANY CONSTRUCTION START. JUNE 11
 2. CONSTRUCTION & STABILIZATION OF EROSION CONTROL MEASURES JUNE 17
 3. EROSION CONTROL MEASURES JUNE 17
 4. CONSTRUCTION OF HOUSES UTILITIES JULY-DEC 77
 5. FINAL GRADING & STABILIZATION OF DISTURBED AREAS APR 178
 6. MAINTENANCE IMMEDIATELY UPON COMPLETION.
 7. REMOVE TEMP SEDIMENT CONTROL MEASURES AFTER OBTAINING PROPER APPROVAL & STABILIZE THESE DISTURBED AREAS. APR 178

SEDIMENT CONTROL NOTES:
 1. ALL SEDIMENT CONTROL MEASURES TO BE CONSTRUCTED ACCORDING TO THE STANDARDS & SPECIFICATIONS FOR SOIL EROSION & SEDIMENT CONTROL IN DEVELOPING AREAS.
 2. FOLLOW SEQUENCE OF OPERATION ABOVE.
 3. CONTRACTOR TO DIRECT ALL SURFACE RUNOFF TO S.D., S.C.E. & SILT TRAPS & NO SILT TO BE ALLOWED TO ENTER STREET ROW OR LEAVE PROPERTY.
 4. CONTRIBUTING AREA TO EACH S.C.E. IS LESS THAN ONE AC.
 5. CONTRACTOR TO INSPECT ALL SEDIMENT CONTROL MEASURES AT LEAST WEEKLY & AFTER EACH RAIN SHAKE ANY NECESSARY REPAIRS & OR REPLACEMENTS AS REQUIRED.
 6. ALL DISTURBED AREAS TO BE SEED AS FOLLOWS:
 TEMP SEEDING:
 2.5 BU. RYE @ 3 LBS. PER 1000' USE CERTIFIED SEED
 PERM. SEEDING:
 CREEPING BENT GRASS (50%) & CERTIFIED KENTUCKY BLUE GRASS (50%) @ 130 LB./AC.
 MULCH WITH WHEAT STRAW @ 15 TO 20 TONS AC. & WITH 1/2" DIA. TIE-DOWN (R.C. 70, 150 OR 800) APPLIED @ 21 GAL 30 Y.D.
 PREPARE SURFACE:
 GROUND LIMESTONE @ 2 TONS/AC. COMMERCIAL FERTILIZER (10-10-10) @ 75 TONS/AC. SUPERPHOSPHATE @ 600 LBS./AC.
 7. REMOVAL OF ANY SEDIMENT CONTROL MEASURE ONLY WITH APPROVAL FROM HOWARD COUNTY INSPECTOR & ONLY AFTER SITE STABILIZED ACCORDING TO NOTE #6 ABOVE.

SILT TRAP DATA
 BOTH TRAPS:
 DRAINAGE AREA = 1.4 AC² EACH
 STORAGE REQ'D = 54 CY
 STORAGE SHOWN = 102 CY
 CLEAN OUT ELEV. = 415.0
 BOTTOM ELEV. = 414.0

GENERAL NOTES
 1. TAX MAP NO. 30
 2. TOTAL AREA 2.04 ACRES
 3. PUBLIC WATER AND SEWER TO BE UTILIZED.
 4. ALL COORDINATES ARE BASED ON MARYLAND STATE GRID SYSTEM. ELEVATIONS ARE BASED ON THE U.S. COAST AND GEODETIC SURVEY MEAN SEA LEVEL DATUM 1929.
 5. ALL DRIVEWAYS TO BE BUILT AS PER HOWARD CO. ROAD CONSTRUCTION CODE DRAWING D-34 PAGE 89

SITE ANALYSIS
 1. ZONING R-12
 2. NUMBER OF LOTS SHOWN 6
 3. AREA INCLUDED IN THIS SUBMISSION 2.04 ACRES
 4. DISTURBED AREA: 1.8 AC²
 5. IMPERVIOUS AREA: 0.3 AC²
 6. VEGETATIVELY STABILIZED 1.5 AC²

APPROVED: For Public Water & Public Sewerage Systems, Howard County Health Department
 County Health Officer Date 7-27-77
 APPROVED: Howard County Office of Planning & Zoning
 Planning Director Date
 Chief Division of Land Development Date
 APPROVED: For Public Water, Public Sewerage & Storm Drainage System & Roads
 Howard County Department of Public Works
 Director Date
 Chief, Bureau of Highways Date

LEGEND:
 --- 42.0 EXISTING GROUND ELEV.
 --- 430 PROPOSED GRADE
 --- PERIMETER DIKE (P.D.)
 --- STONE OUTLET STRUCTURE (S.O.S.)
 --- STABILIZED CONSTRUCTION ENTRANCE (S.C.E.)

APPROVED FOR HOWARD COUNTY S.C.S. & MEETS TECHNICAL REQUIREMENTS.
 Wm. Bennett DATE: 7-14-77
 U.S. SOIL CONSERVATION SERVICE
 THIS DEVELOPMENT PLAN IS APPROVED FOR SOIL EROSION AND SEDIMENT CONTROL BY THE HOWARD COUNTY SOIL CONSERVATION DISTRICT.
 APPROVED: John D. Moran DATE: 7-14-77
 HOWARD COUNTY S.C.D.

ENGINEER'S CERTIFICATION
 I CERTIFY THAT THIS PLAN FOR EROSION & SEDIMENT CONTROL REPRESENTS A PRACTICAL & WORKABLE PLAN BASED ON MY PERSONAL KNOWLEDGE OF THE SITE CONDITIONS AND THAT IT WAS PREPARED IN ACCORDANCE WITH THE REQUIREMENTS OF THE HOWARD COUNTY SOIL CONSERVATION DISTRICT.
 Paul L. MCA ENGINEERING CORP. DATE: 5-7-77
 10200 MARSHALL BRIDGE RD. TOWSON, MARYLAND.

DEVELOPER'S CERTIFICATION
 I CERTIFY THAT ALL DEVELOPMENT AND/OR CONSTRUCTION WILL BE DONE ACCORDING TO THIS PLAN OF DEVELOPMENT'S PLAN OF EROSION & SEDIMENT CONTROL & I ALSO AUTHORIZE PERIODIC ON SITE INSPECTION BY HOWARD CO. SOIL CONSERVATION DISTRICT OR THEIR AUTHORIZED AGENTS AS ARE DEMAND NECESSARY. DEVIATION FROM THIS PLAN ONLY IF AUTHORIZED BY THE HOWARD COUNTY SOIL CONSERVATION DISTRICT.
 DATE 5-25-77
 COLONIAL CORNER SERVICE CORPORATION BALTIMORE TRADING BLDG. 126 FAYETTE STREET BALTIMORE, MARYLAND 21202

OWNER AND DEVELOPER
 COLONIAL CORNER SERVICE CORPORATION
 FAYETTE & ST. PAUL STREETS
 BALTIMORE, MARYLAND 21202

APPROVED: For Public Water & Public Sewerage Systems, Howard County Health Department
 County Health Officer Date 7-27-77
 APPROVED: Howard County Office of Planning & Zoning
 Planning Director Date
 Chief Division of Land Development Date
 APPROVED: For Public Water, Public Sewerage & Storm Drainage System & Roads
 Howard County Department of Public Works
 Director Date
 Chief, Bureau of Highways Date

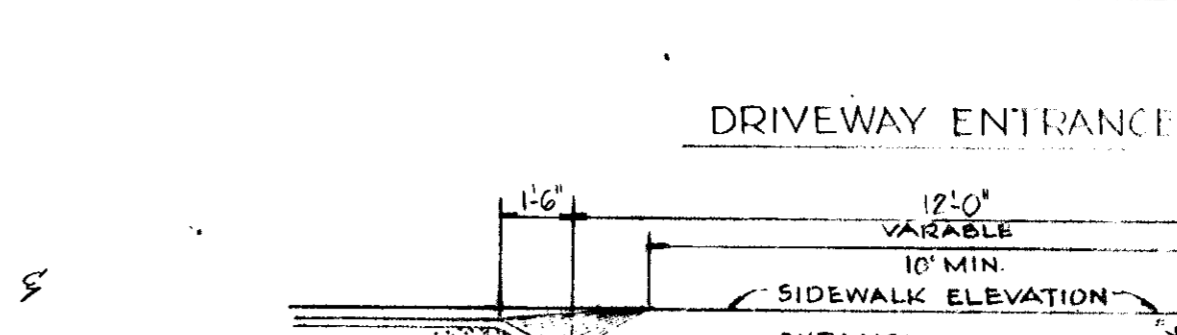
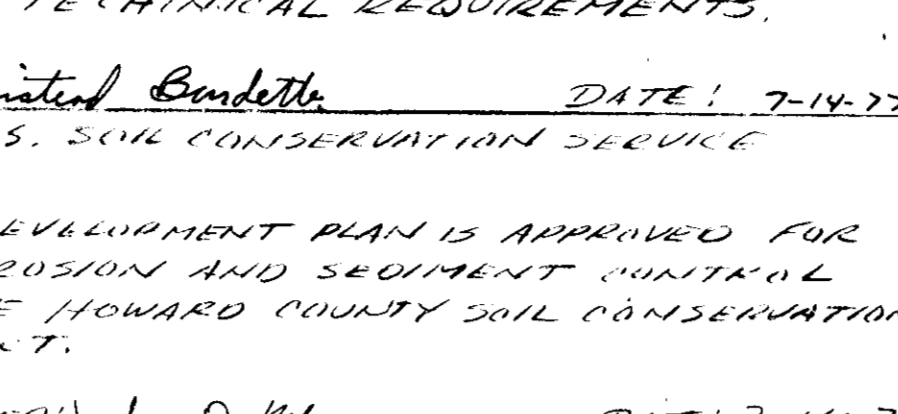
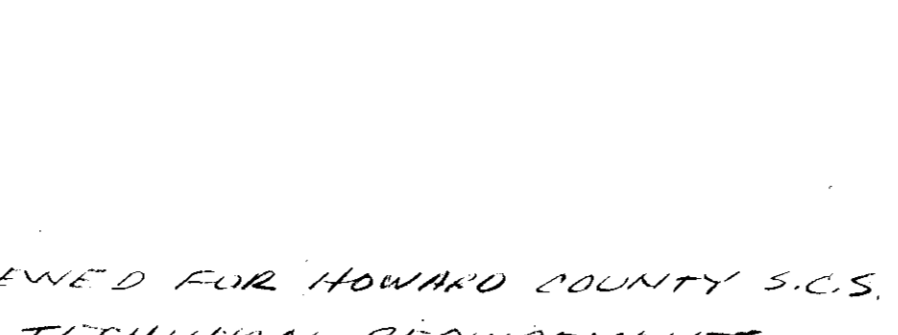
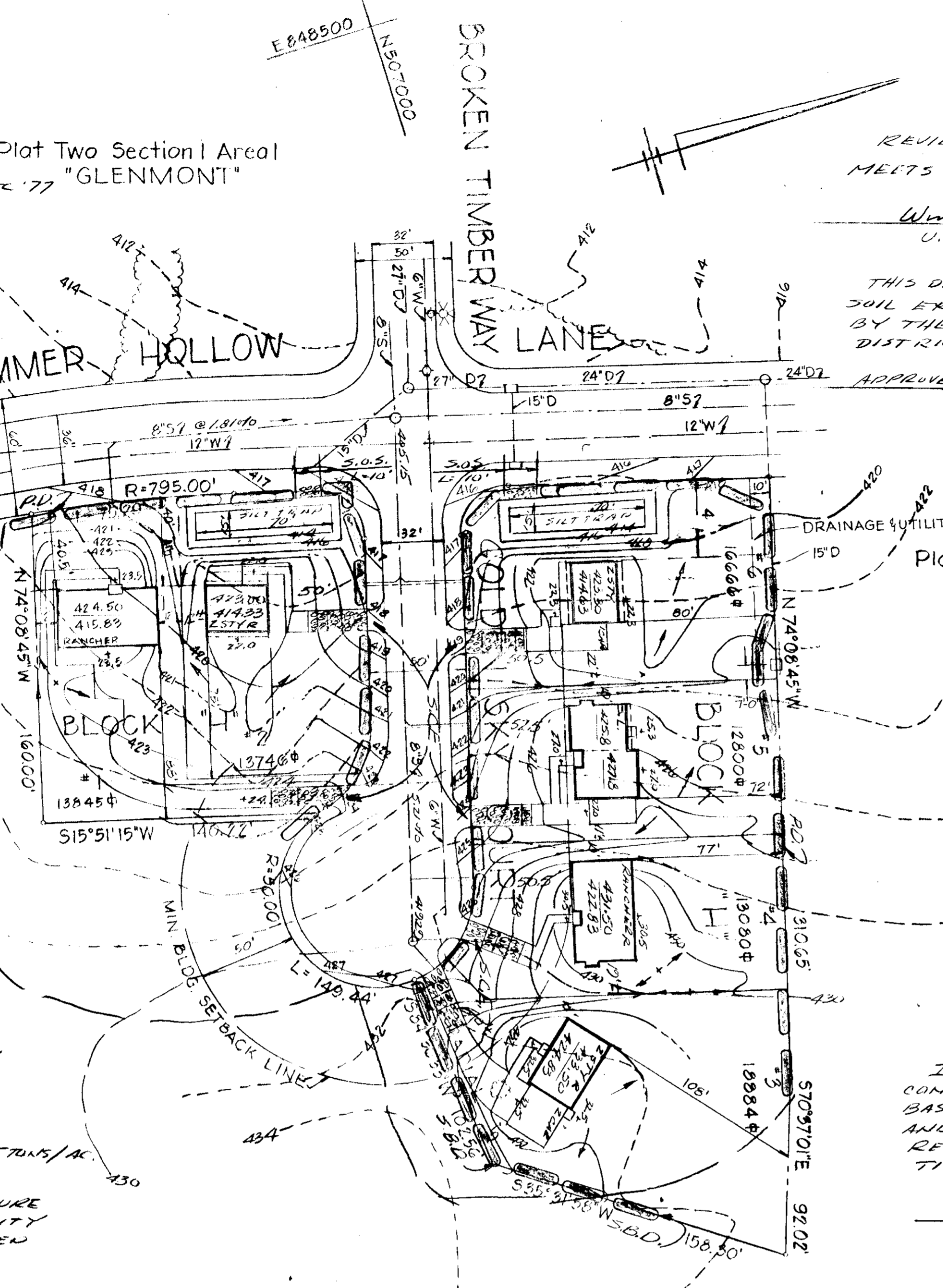
LEGEND:
 --- 42.0 EXISTING GROUND ELEV.
 --- 430 PROPOSED GRADE
 --- PERIMETER DIKE (P.D.)
 --- STONE OUTLET STRUCTURE (S.O.S.)
 --- STABILIZED CONSTRUCTION ENTRANCE (S.C.E.)

APPROVED: For Public Water & Public Sewerage Systems, Howard County Health Department
 County Health Officer Date 7-27-77
 APPROVED: Howard County Office of Planning & Zoning
 Planning Director Date
 Chief Division of Land Development Date
 APPROVED: For Public Water, Public Sewerage & Storm Drainage System & Roads
 Howard County Department of Public Works
 Director Date
 Chief, Bureau of Highways Date

LEGEND:
 --- 42.0 EXISTING GROUND ELEV.
 --- 430 PROPOSED GRADE
 --- PERIMETER DIKE (P.D.)
 --- STONE OUTLET STRUCTURE (S.O.S.)
 --- STABILIZED CONSTRUCTION ENTRANCE (S.C.E.)

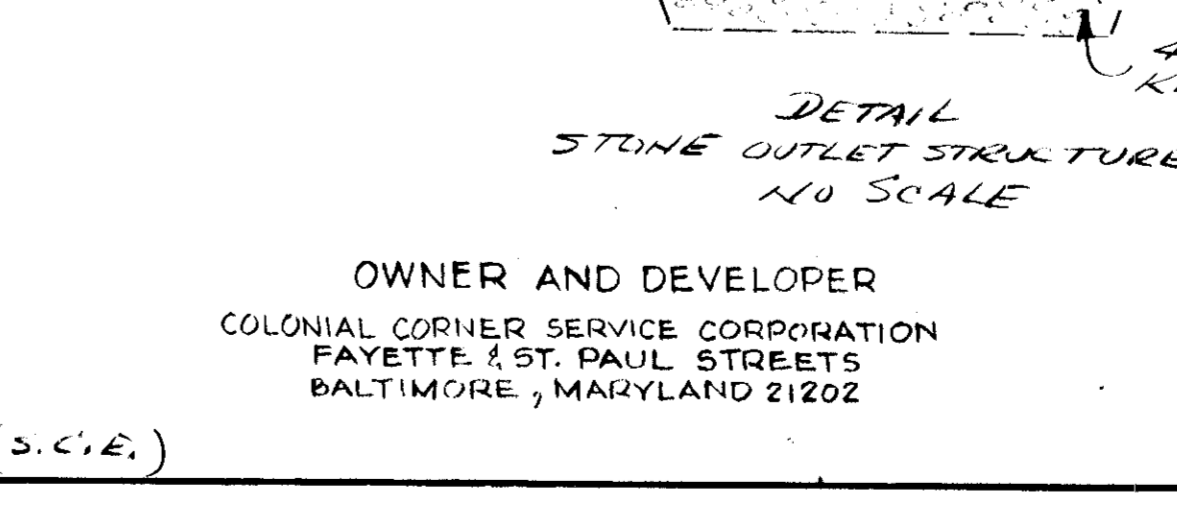
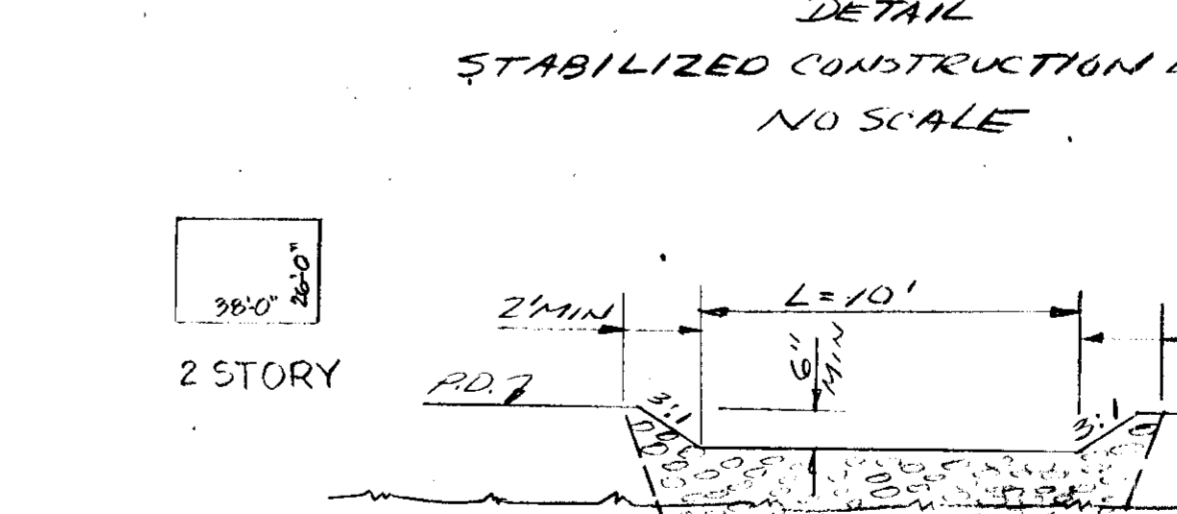
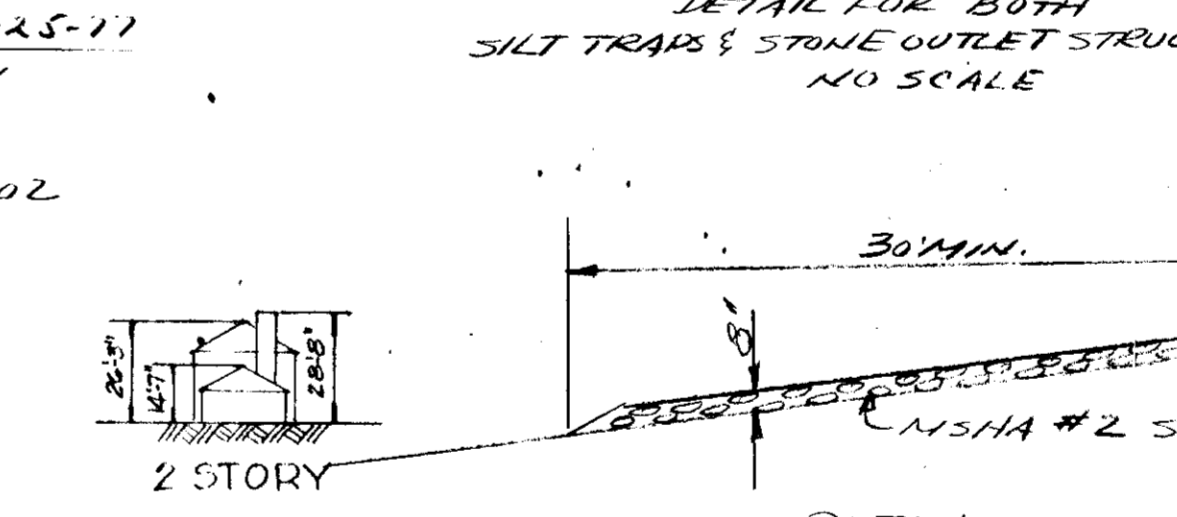
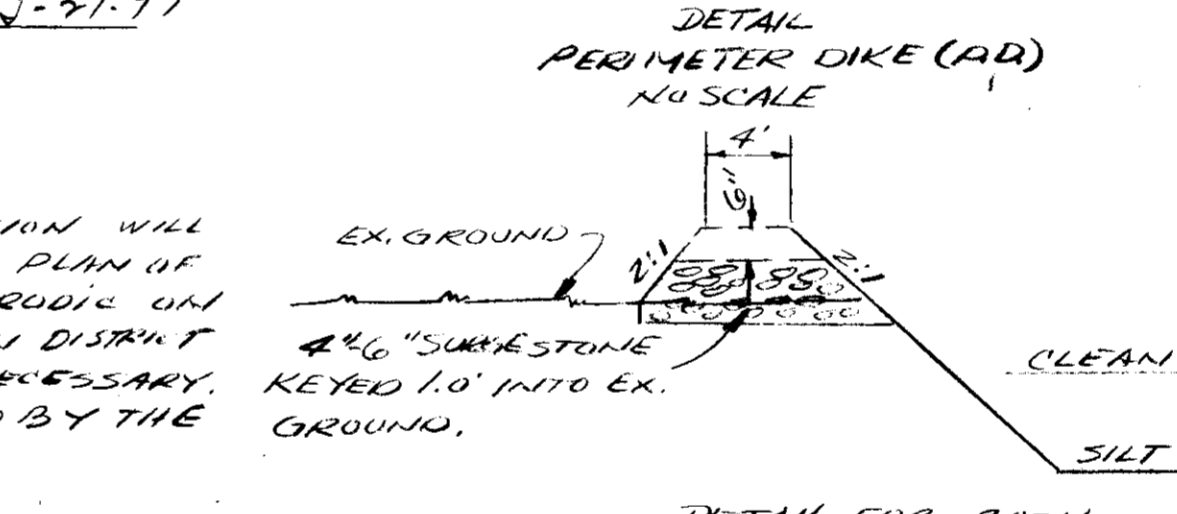
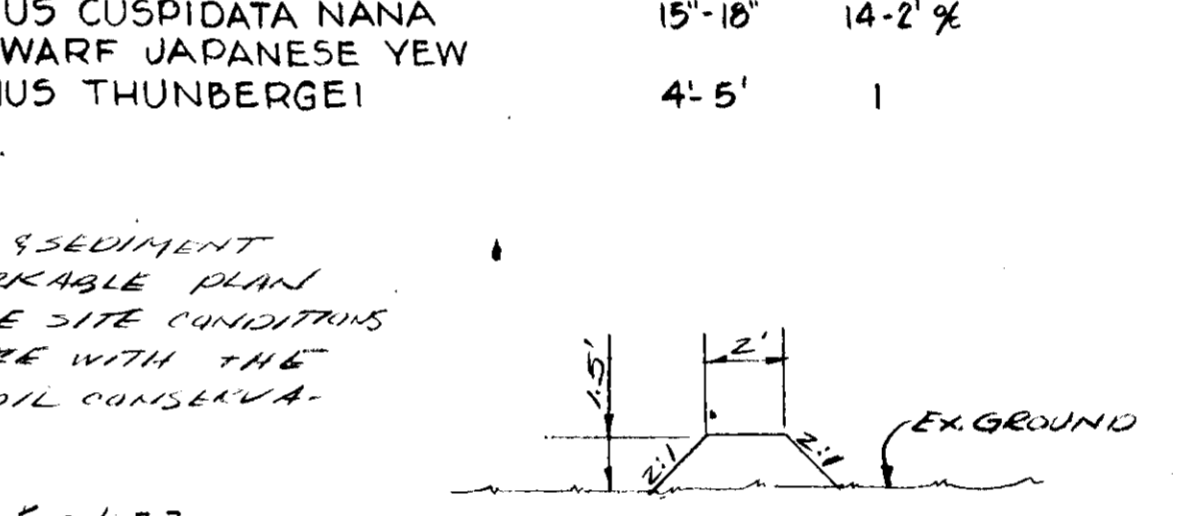
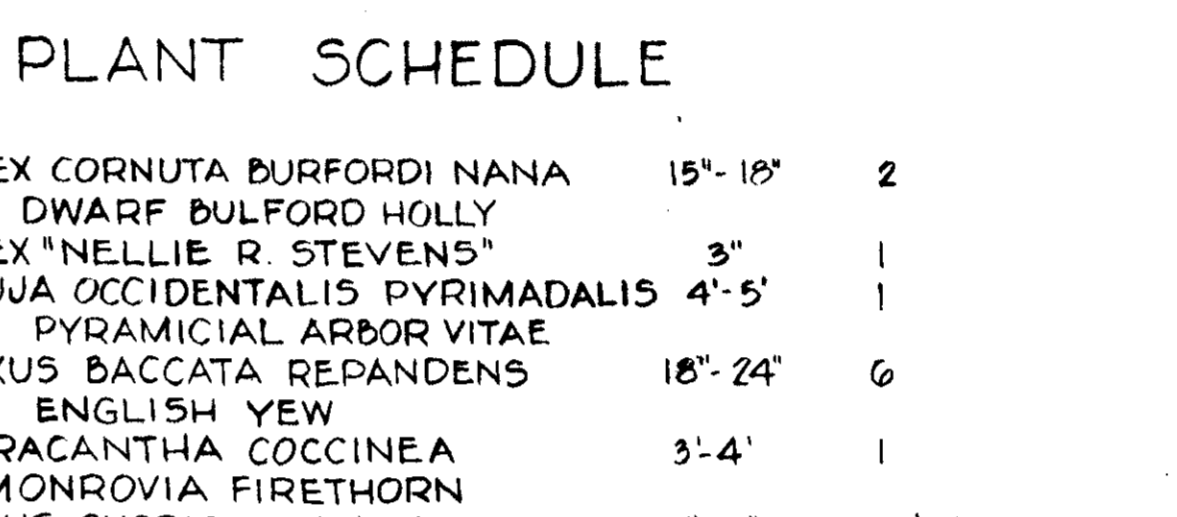
APPROVED: For Public Water & Public Sewerage Systems, Howard County Health Department
 County Health Officer Date 7-27-77
 APPROVED: Howard County Office of Planning & Zoning
 Planning Director Date
 Chief Division of Land Development Date
 APPROVED: For Public Water, Public Sewerage & Storm Drainage System & Roads
 Howard County Department of Public Works
 Director Date
 Chief, Bureau of Highways Date

LEGEND:
 --- 42.0 EXISTING GROUND ELEV.
 --- 430 PROPOSED GRADE
 --- PERIMETER DIKE (P.D.)
 --- STONE OUTLET STRUCTURE (S.O.S.)
 --- STABILIZED CONSTRUCTION ENTRANCE (S.C.E.)



PLANT SCHEDULE

S-1 ILEX CORNUTA BURFORDI NANA DWARF BULFORD HOLLY	15'-18"	2
S-2 ILEX "NELLIE R. STEVENS" PYRAMICAL ARBOR VITAE	3'	1
S-3 THUJA OCCIDENTALIS PYRAMADALIS ENGLISH YEW	4'-5'	1
S-4 TAXUS BACCATA REPANDENS DWARF JAPANESE YEW	18'-24'	6
S-5 PYRACANTHA COCCINEA MONROVIA FIRETHORN	3'-4'	1
S-6 TAXUS CUSPIDATA NANA DWARF JAPANESE YEW	15'-18"	14-2'
T-3 PINUS THUNBERGII	4'-5'	1



OWNER AND DEVELOPER
 COLONIAL CORNER SERVICE CORPORATION
 FAYETTE & ST. PAUL STREETS
 BALTIMORE, MARYLAND 21202

SECTION I AREA I GLENMONT
 VICINITY MAP
 SCALE: 1"=2000'

TYPICAL PLANTING PLAN

7-5-77

DRIVEWAY SEDIMENT CONTROL SITE DEVELOPMENT PLAN
 GLENMONT
 SECTION I AREA I LOTS 1-6 BLOCK "H"

ELECTION DISTRICT GUILFORD NO. 6 HOWARD COUNTY, MD
 SCALE: 1"=50'
 APRIL 1977
 RECORDED AS PLAT 9573 ON DECEMBER 1, 1976 AMONG THE LAND RECORDS OF HOWARD COUNTY, MARYLAND.

MCA ENGINEERING CORP.
 10200 MARSHALL BRIDGE ROAD
 BALTIMORE, MD 21204

SHEET 2 OF 2
 176058A (Ord)
 W.C. 1421
 SDP-77-101