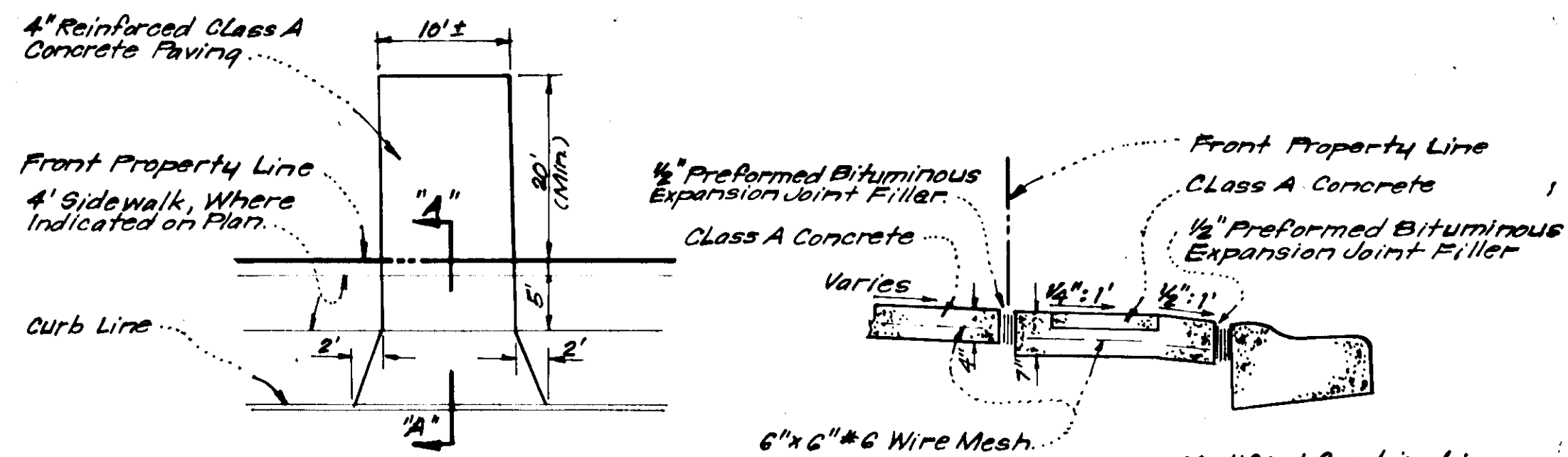


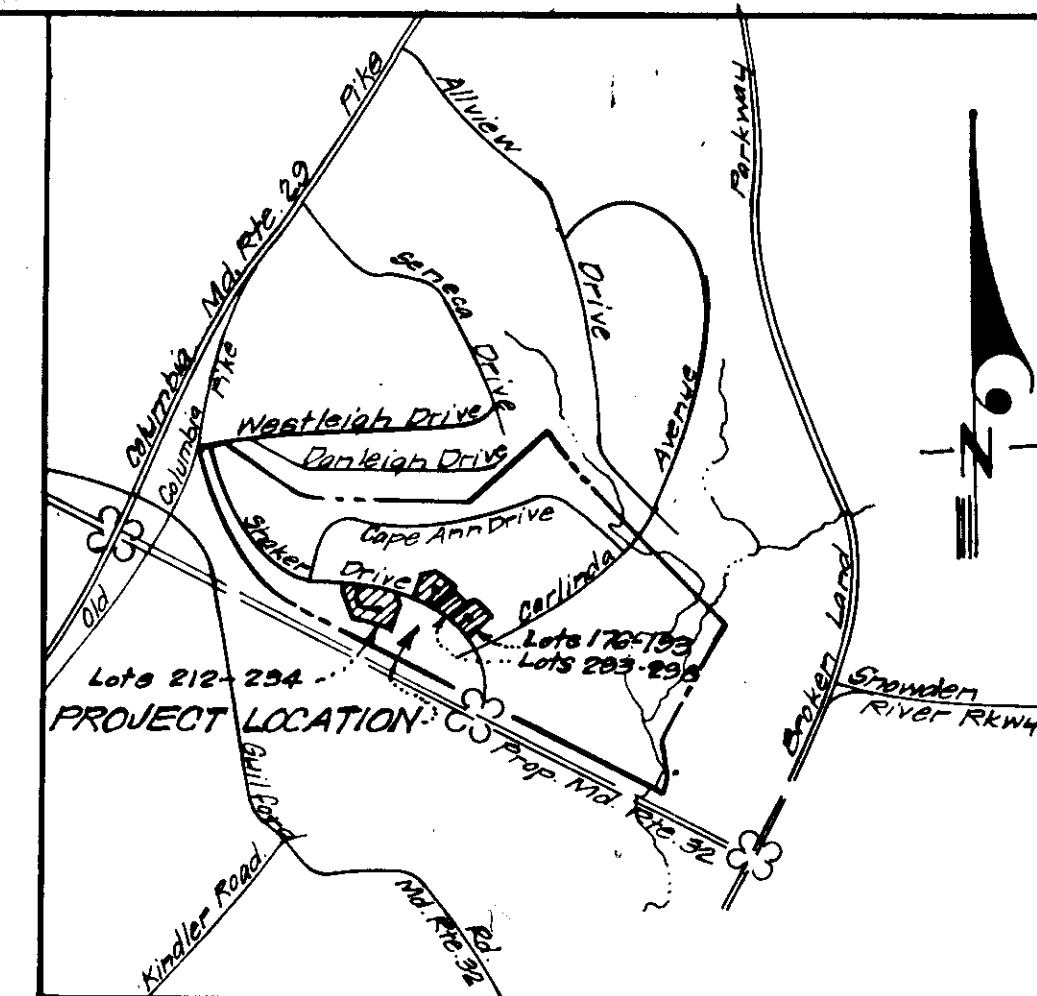
TYPICAL HOUSES
No Scale



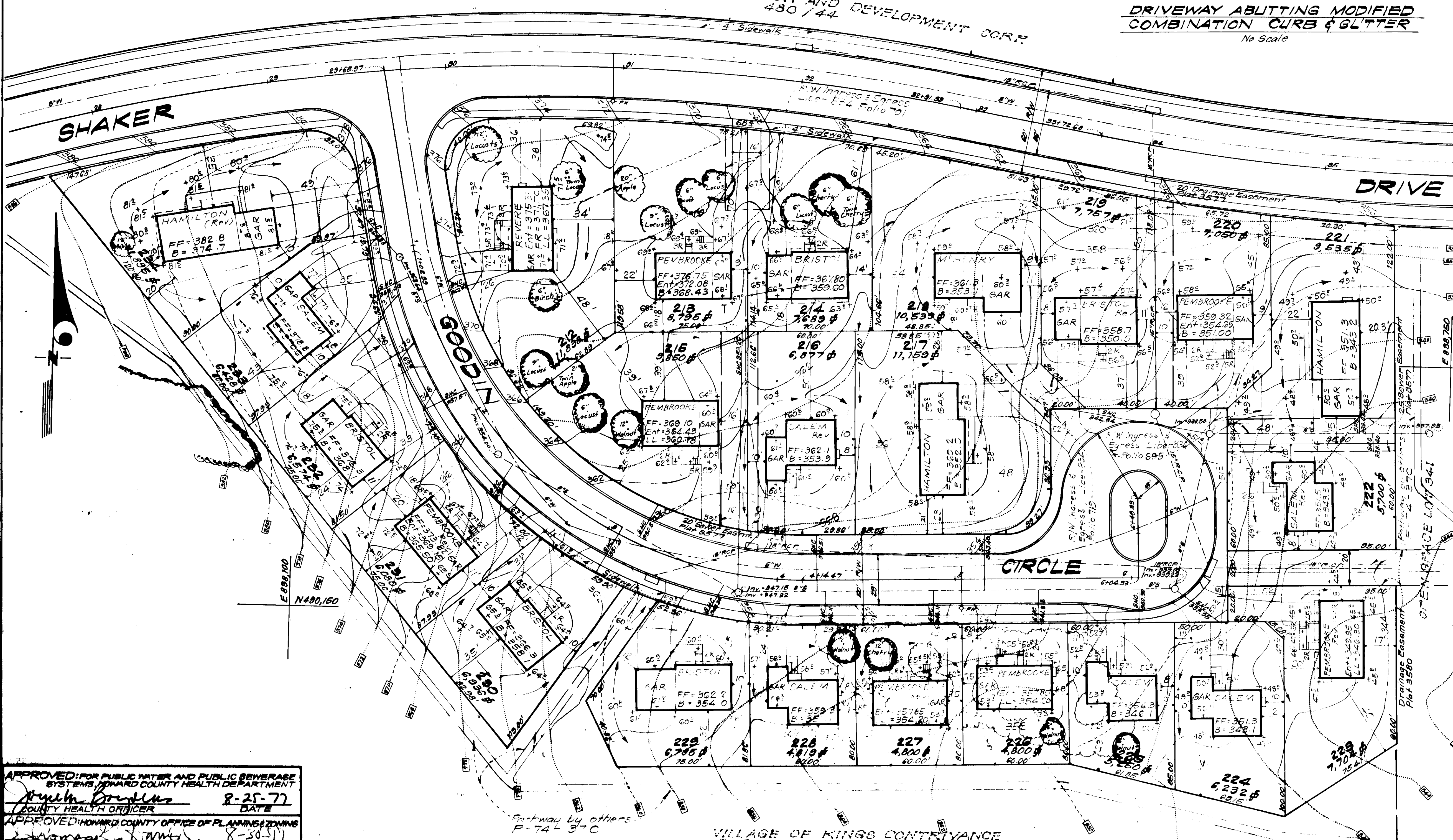
NOTE: Use Residential Driveway Entrance Howard Co. Std. Dwg. D-34, pg. 89, except where driveway abuts Modified Comb. Curb & Gutter.

NOTE: All Materials and Construction shall be in accordance with Howard Co. Road Construction Code.

PLAN
DRIVEWAY ABUTTING MODIFIED COMBINATION CURB & GUTTER
No Scale



VICINITY MAP
Scale: 1"=2000'



- LEGEND**
- 1. Contour Interval 2. Ft.
 - 2. Existing Contour --- 50 ---
 - 3. Proposed Contour --- 350 ---
 - 4. Spot Elevation +50.5
 - 5. Direction of Drainage →
 - 6. Existing Trees to be Retained ○
 - 7. Yard Requirements: Front: 20' on 50' Wide Street
50' on 60' Wide Street
Side: 7.5' (Min.)
 - 8. Timber Retaining Wall [Symbol]
 - 9. Walk Out Basement [Symbol]

- GENERAL NOTES**
1. The Land included in this Plan is zoned NewTown (S.F.M.D.)
 2. The Lots shown on this Plan are covered by Final Development Plan Phase 148 recorded in Plat Book 25, Folios 70 to 79
 3. All Coordinates are based on Maryland State Grid System. Elevations are based on U.S. Coast and Geodetic Survey Mean Sea Level of 1929.
 4. The Area covered in this submission is located on Tax Map 42.
 5. The total Area included in this Plan is 8.182 Acres.
 6. All Roadways are Public and Existing.
 7. Any damage to county owned Right of Ways or Paving shall be corrected at the developer's expense.

APPROVED
PLANNING BOARD
OF HOWARD COUNTY
DATE: 7-6-77

NOTE: For Bearings and distances of individual lot lines See Record Plat recorded as Plat 8577, 3578 & 3580

APPROVED FOR PUBLIC WATER AND PUBLIC SEWERAGE SYSTEMS, HOWARD COUNTY HEALTH DEPARTMENT
 COUNTY HEALTH OFFICER: *[Signature]* 8-25-77
 DATE: 8-25-77

APPROVED HOWARD COUNTY OFFICE OF PLANNING & ZONING
 PLANNING DIRECTOR: *[Signature]* 8-30-77
 DATE: 8-29-77

CHIEF DIVISION OF LAND DEVELOPMENT
 DIRECTOR: *[Signature]* 8-22-77
 DATE: 8-24-77

APPROVED FOR PUBLIC WATER AND PUBLIC SEWERAGE, STORM DRAINAGE SYSTEMS AND PUBLIC ROADS, HOWARD COUNTY DEPARTMENT OF PUBLIC WORKS
 DIRECTOR: *[Signature]* 8-22-77
 DATE: 8-24-77

CHIEF BUREAU OF HIGHWAYS

VILLAGE OF KINGS CONTRIVANCE
SECTION 1
PLAT 8677
OPEN SPACE LOT 341

CLARK • FINEPROCK & SACKETT
ENGINEERS • PLANNERS • SURVEYORS
11115 LOCKWOOD DRIVE SILVER SPRING, MARYLAND 20904 (301) 593 3400

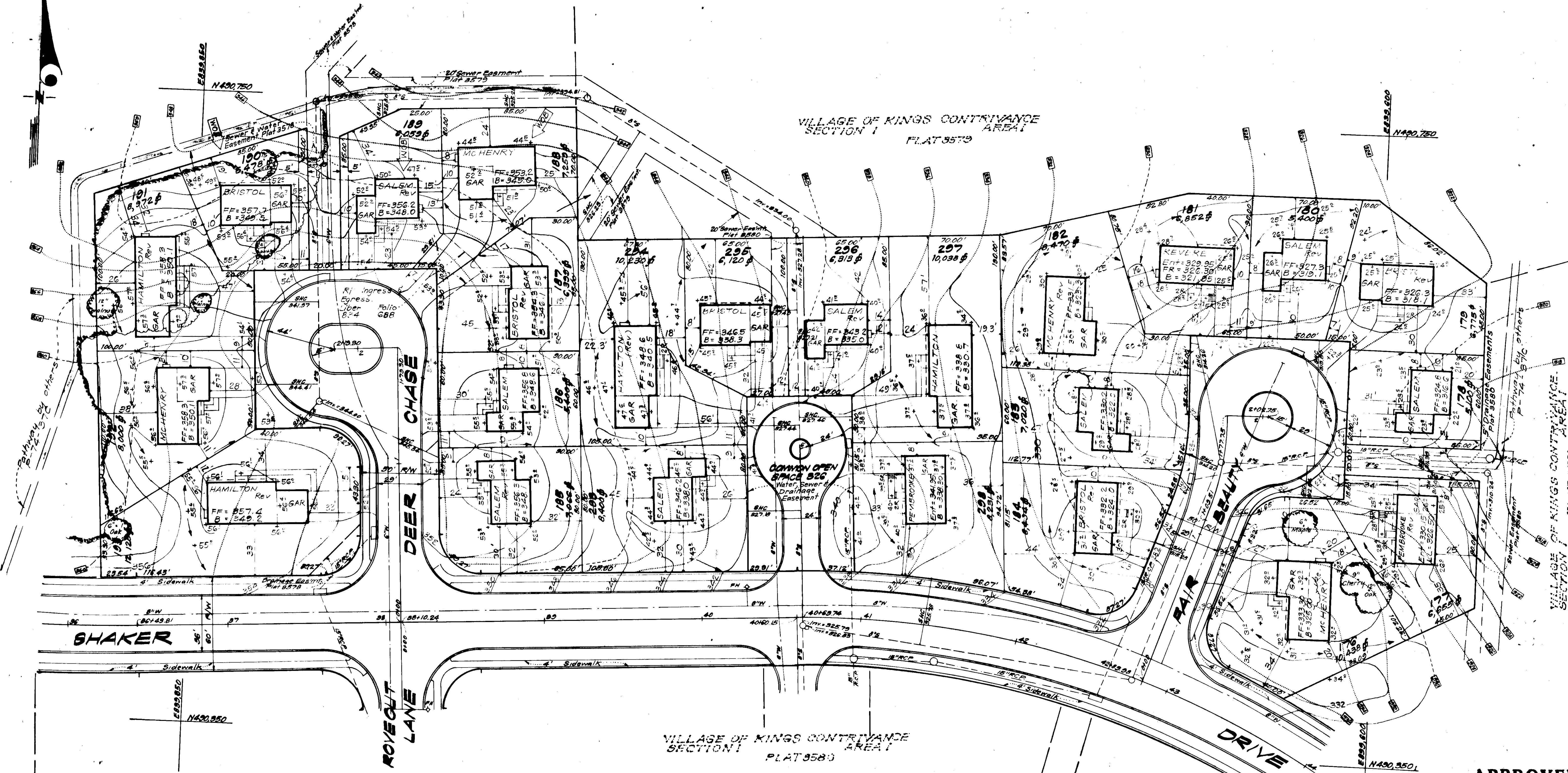
DESIGNED	W.R.M.E.	SITE DEVELOPMENT PLAN LOTS 176 THRU 193 & LOTS 212 THRU 234 LOTS 293 THRU 298	SCALE	1:50'
DRAWN	K.I.W.		DRAWING	1 of 5
CHECKED	D.B.S.	COLUMBIA VILLAGE OF KINGS CONTRIVANCE SECTION 1 6th ELECTION DISTRICT HOWARD COUNTY, MARYLAND FOR: THE RYLAND GROUP (Columbia Dr.) Suite 200 V.O.M. Office Bldg. Columbia, Md 21045	JOB NO.	1242-X
DATE	May, 1977		FILE NO.	1242-X

SDP-77-100C See Also: H.C. 808 1245-SE

VILLAGE OF KINGS CONTRIVANCE
SECTION I PLAT 3578

VILLAGE OF KINGS CONTRIVANCE
SECTION I PLAT 3579

VILLAGE OF KINGS CONTRIVANCE
SECTION I PLAT 3580



APPROVED
PLANNING BOARD
OF HOWARD COUNTY
DATE 7-6-77

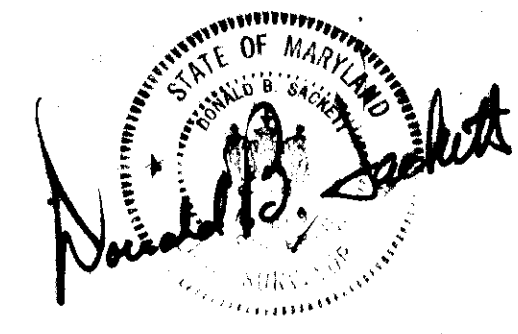
NOTE:
For bearings and distances of individual lot lines, see
record plat recorded:
Lots 185 thru 193 in Plat #3578
Lots 176 thru 184 and 293 thru 298 in Plat #3580.

APPROVED FOR PUBLIC WATER AND PUBLIC SEWERAGE
SYSTEMS HOWARD COUNTY HEALTH DEPARTMENT
James H. ... 8-25-77
COUNTY HEALTH OFFICER DATE

APPROVED HOWARD COUNTY OFFICE OF PLANNING & ZONING
PLANNING DIRECTOR DATE
... 8-24-77
CHIEF DIVISION OF LAND DEVELOPMENT DATE

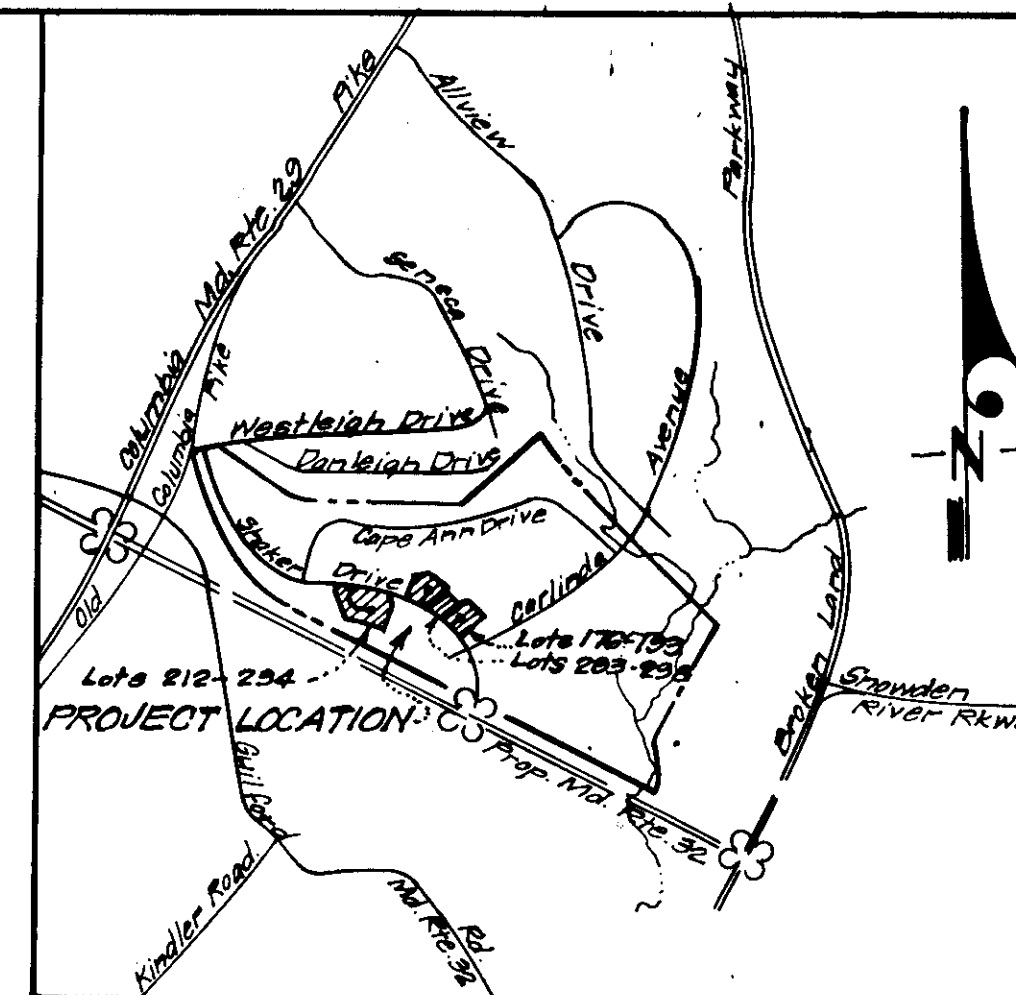
APPROVED FOR PUBLIC WATER AND PUBLIC SEWERAGE,
STORM DRAINAGE SYSTEMS AND PUBLIC ROADS
HOWARD COUNTY DEPARTMENT OF PUBLIC WORKS
... 8-22-77
DATE
... 8/22/77
CHIEF ENGINEER OF HIGHWAYS DATE

CLARK • FINEBROCK & SACKETT ENGINEERS • PLANNERS • SURVEYORS 11315 LOCKWOOD DRIVE SILVER SPRING, MARYLAND 20904 (301) 583-3408		DESIGNED	SITE DEVELOPMENT PLAN	SCALE
		D.B.S.	LOTS 176 THRU 193 & LOTS 212 THRU 234 LOTS 293 THRU 298	1"=30'
		DRAWN	COLUMBIA	DRAWING
		K.I.W.	VILLAGE OF KINGS CONTRIVANCE SECTION I AREA I	24'5
		CHECKED	6th ELECTION DISTRICT HOWARD COUNTY, MARYLAND	JOB NO.
		D.B.S.	FOR: THE RYLAND GROUP (Civil Division) Suite 200 V.O.M. Office Bldg. Columbia, Md. 21045	FILE NO.
		DATE	May 1977	1242-X
			SDP-77-100C	HC-506 SHT. 10 1245-5E





THE HOWARD RESEARCH AND DEVELOPMENT CORP.
480/44



VIOLINITY MAP
Scale: 1"=200'

LEGEND

- 1. Contour Interval 2 Ft.
- 2. Existing Contour
- 3. Proposed Contour
- 4. Spot Elevation +50 ±
- 5. Direction of Drainage
- 6. Existing Trees to be Retained
- 7. Yard Requirements: Front: 20' on 50' Wide Street
90' on 60' Wide Street
Side: 7.5' (Min.)
- 8. Timber Retaining Wall
- 9. Diversion Dike
- 10. Straw Bale Dike or Silt Fence
- 11. Stone Filter Inlet Protection
- 12. Stone Construction Entrance

DEVELOPER'S CERTIFICATE

I certify that all development and/or construction will be done according to this plan of development and plan for Erosion and Sediment Control, and I also authorize periodic on-site inspection by the Howard Soil Conservation District or their authorized agents as are deemed necessary. Deviation from this plan will not be made unless authorized by the Howard Soil Conservation District.

[Signature] 5-25-77
Date

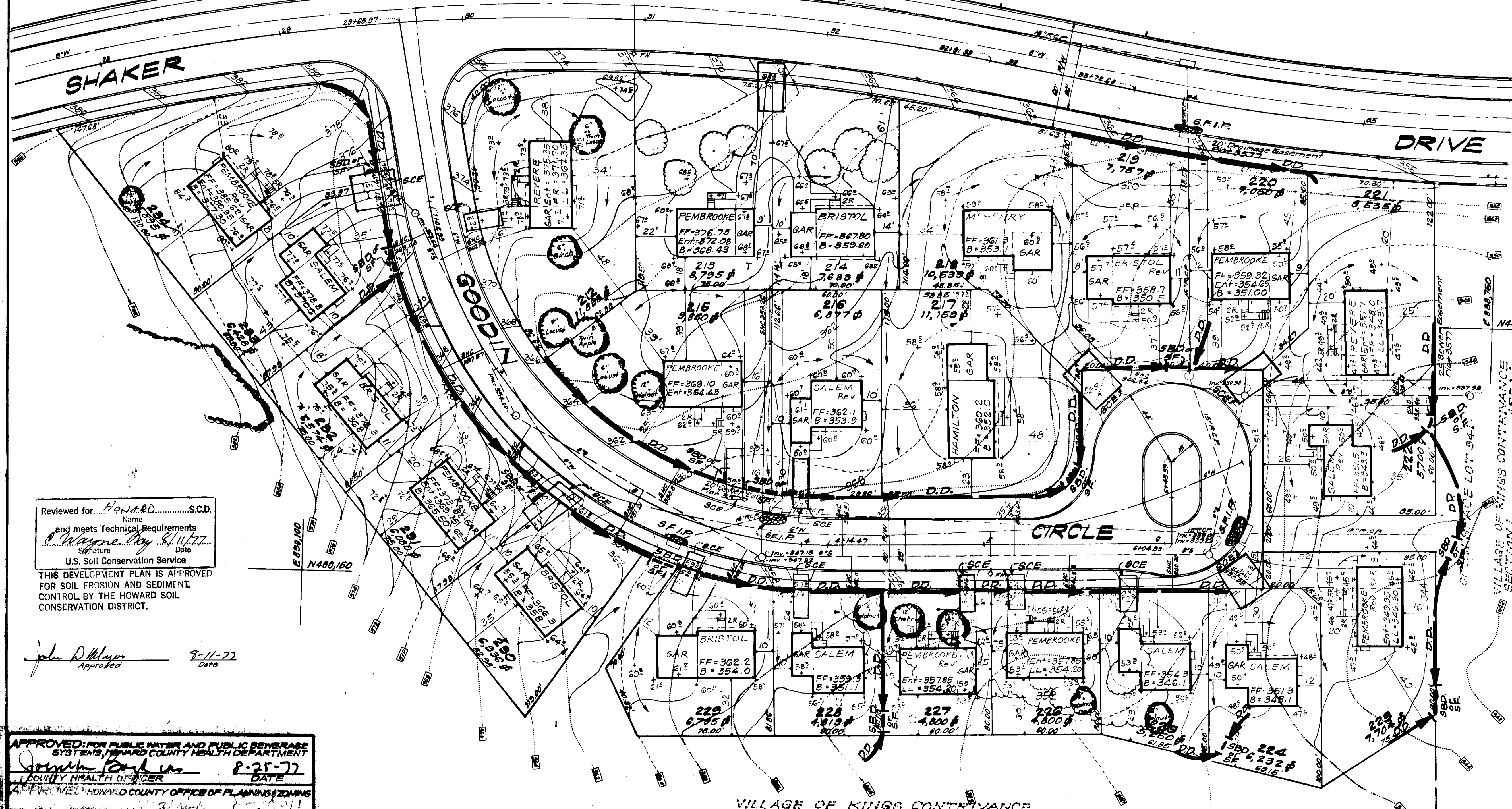
ENGINEER'S CERTIFICATE

I hereby certify that this plan for Erosion and Sediment Control represents a practical and workable plan based on my personal knowledge of the site conditions and that it was prepared in accordance with the requirements of the Howard Soil Conservation District.

[Signature] 5-25-77
G. Nelson Clark Date



NOTE: For Bearings and distances of individual lot lines See Record Plat recorded as Plat 3577 & 3580.



VILLAGE OF KINGS CONTRIVANCE SECTION I
PLAT 3577 AREA 1
OPEN SPACE LOT 341

APPROVED
PLANNING BOARD OF HOWARD COUNTY
DATE 7-6-77

Reviewed for HOWARD S.C.D. Name and meets Technical Requirements
[Signature] Date
U.S. Soil Conservation Service
THIS DEVELOPMENT PLAN IS APPROVED FOR SOIL EROSION AND SEDIMENT CONTROL BY THE HOWARD SOIL CONSERVATION DISTRICT.

[Signature] 8-11-77 Date
Approved

APPROVED FOR PUBLIC WATER AND PUBLIC SEWERAGE SYSTEMS, HOWARD COUNTY HEALTH DEPARTMENT
[Signature] 8-25-77 DATE
COUNTY HEALTH OFFICER

APPROVED HOWARD COUNTY OFFICE OF PLANNING & ZONING
[Signature] DATE
PLANNING DIRECTOR

APPROVED FOR PUBLIC WATER AND PUBLIC SEWERAGE, STORM DRAINAGE SYSTEMS AND PUBLIC ROADS, HOWARD COUNTY DEPARTMENT OF PUBLIC WORKS
[Signature] 8-11-77 DATE
DIRECTOR

APPROVED FOR PUBLIC WATER AND PUBLIC SEWERAGE, STORM DRAINAGE SYSTEMS AND PUBLIC ROADS, HOWARD COUNTY DEPARTMENT OF HIGHWAYS
[Signature] DATE
CHIEF BUREAU OF HIGHWAYS

CLARK • FINEPROCK & SACKETT
ENGINEERS • PLANNERS • SURVEYORS
11315 LOCKWOOD DRIVE SILVER SPRING, MARYLAND 20904 (301) 593 3400

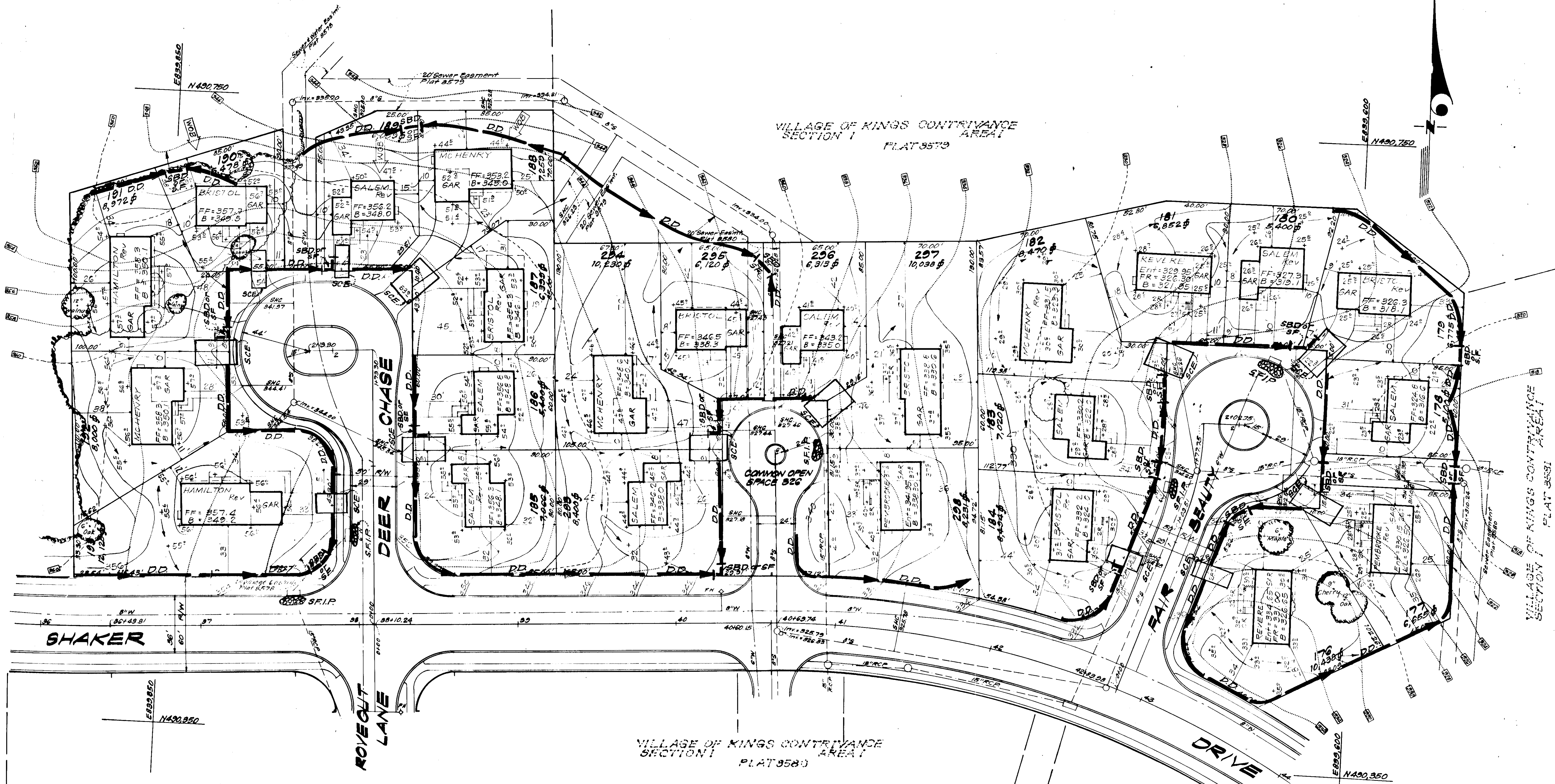
DESIGNED R.J.S.	SITE DEVELOPMENT PLAN SEDIMENT & EROSION CONTROL PLAN LOTS 176 THRU 193 & LOTS 212 THRU 234 LOTS 235 THRU 236	SCALE 1"=90'
DRAWN K.I.W.		DRAWING 3 of 5
CHECKED G.N.C.	COLUMBIA VILLAGE OF KINGS CONTRIVANCE AREA 1 SECTION I 6th ELECTION DISTRICT HOWARD COUNTY, MARYLAND	JOB NO.
DATE May 1977		FILE NO. 1245-SE

FOR: THE RYLAND GROUP (Columbia Div.)
Suite 200 V.O.M. Office Bldg.
Columbia, Md 21045
SDP-TT-100c See Also: HOC 306, 242X

VILLAGE OF KINGS CONTRIVANCE
SECTION 1 PLAT 8578

VILLAGE OF KINGS CONTRIVANCE
SECTION 1 PLAT 8579

VILLAGE OF KINGS CONTRIVANCE
SECTION 1 PLAT 8580



APPROVED FOR PUBLIC WATER AND PUBLIC SEWERAGE SYSTEMS, HOWARD COUNTY HEALTH DEPARTMENT
Joseph Boylston 8-25-77
 COUNTY HEALTH OFFICER
 APPROVED FOR HOWARD COUNTY OFFICE OF PLANNING & ZONING
 PLANNING DIRECTOR
 CHIEF DIVISION OF LAND DEVELOPMENT
 APPROVED FOR PUBLIC WATER AND PUBLIC SEWERAGE, STORM DRAINAGE SYSTEMS AND PUBLIC ROADS, HOWARD COUNTY DEPARTMENT OF PUBLIC WORKS
 DIRECTOR
 COUNTY BUREAU OF HIGHWAYS

Reviewed for Howard S.C.D.
 and meets Technical Requirements
Wayne Ray 8/11/77
 U.S. Soil Conservation Service
 THIS DEVELOPMENT PLAN IS APPROVED FOR SOIL EROSION AND SEDIMENT CONTROL BY THE HOWARD SOIL CONSERVATION DISTRICT.

DEVELOPER'S CERTIFICATE
 I certify that all development and/or construction will be done according to this plan of development and plan for Erosion and Sediment Control, and I also authorize periodic onsite inspection by the Howard Soil Conservation District or their authorized agents as are deemed necessary. Deviation from this plan will not be made unless authorized by the Howard Soil Conservation District.
John D. Meyer 5-11-77
 Signature Date

ENGINEER'S CERTIFICATE
 I hereby certify that this plan for Erosion and Sediment Control represents a practical and workable plan based on my personal knowledge of the site conditions and that it was prepared in accordance with the requirements of the Howard Soil Conservation District.
G. Nelson Clark 5-25-77
 Signature Date



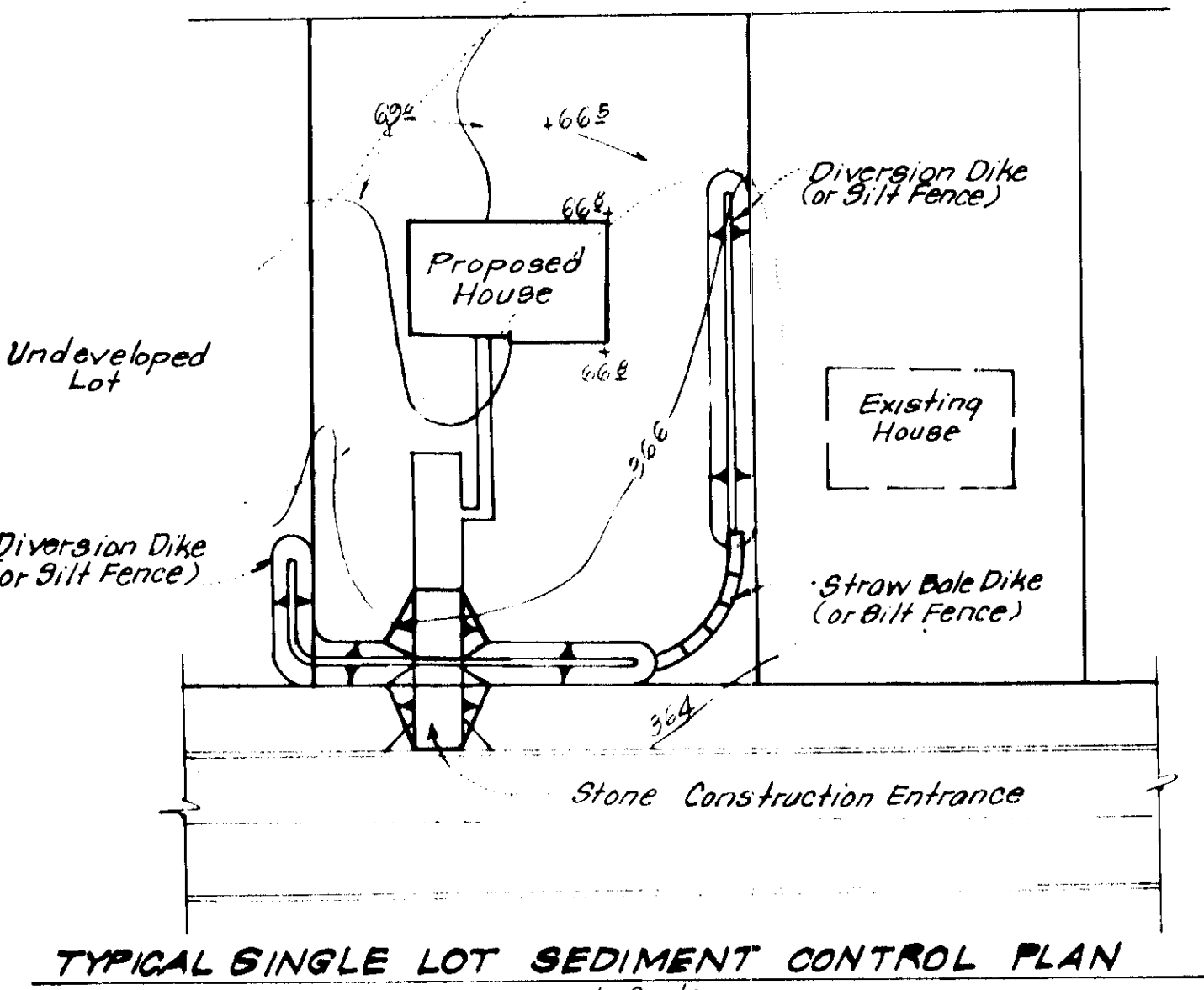
APPROVED
 PLANNING BOARD
 OF HOWARD COUNTY
 DATE 7-6-77

CLARK • FINEFROCK & SACKETT ENGINEERS • PLANNERS • SURVEYORS 11215 LARKWOOD DRIVE SILVER SPRING, MARYLAND 20904 (301) 593-3400		
DESIGNED R.U.S.	SITE DEVELOPMENT PLAN SEDIMENT & EROSION CONTROL PLAN LOTS 176 THRU 193 & LOTS 212 THRU 234 LOTS 293 THRU 298	SCALE 1"=30'
DRAWN K.I.W.	COLUMBIA VILLAGE OF KINGS CONTRIVANCE SECTION 1 6TH ELECTION DISTRICT HOWARD COUNTY, MARYLAND	DRAWING 4 of 5
CHECKED G.N.C.	FOR THE RYLAND GROUP (Col. Division) Suite 200 W.O.M. OFFICE Bldg. Columbia, Md. 21045	JOB NO.
DATE May, 1977	SDP-77-100c	FILE NO. 1245-SE

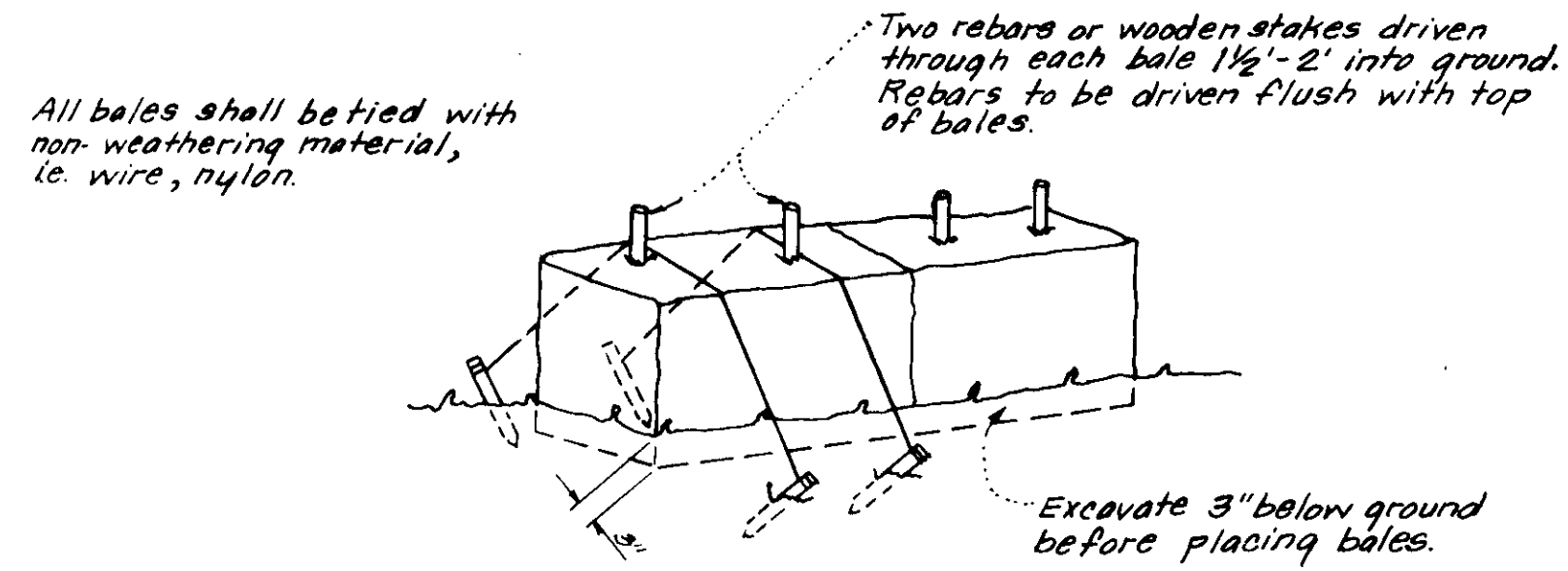
GENERAL NOTES

- All Sediment and Erosion Control Measures will be installed and stabilized according to this plan prior to any other grading, clearing, or disturbance of the existing surface of the site. See Note #5 for stabilization except that the seed mixture will be annual rye applied at the rate of 1.4 lbs/1000 sq.ft.
- Notify the Bureau of Inspections and Permits at least 24 hrs before starting any work.
- All Sediment Control Practices to conform to the Standards and Specifications for Soil Erosion and Sediment Control in Developing Areas and shall be adjusted to meet actual field conditions.
- Stabilization of disturbed ground to be done as soon after construction as possible.
- All grading shall be treated in accordance with the following Specifications:
 - Seed - certified 85% germination applied at the rate of 3lbs/1000 sq.ft. mixture - 40% Kentucky Blue, 20% Chewing Fescue, 20% Kentucky 31, and 20% Annual Rye.
 - Fertilizer - 10-10-10 applied at the rate of 23 lbs/1000 sq.ft. Ground agricultural lime or dolomitic lime applied at the rate of 46 lbs/1000 sq.ft.
 - Mulch - Weed free grain straw applied at the rate of 70 lbs/1000 sq.ft. Mulch shall be secured to the ground by any approved method, i.e. asphalt tacks, chemical binder, wood chips, etc.
- All Structural Sediment Control Measures are to remain in place until permission for their removal has been obtained from the Bureau of Inspections and Permits.
- On site inspection and maintenance of all sediment control measures including cleanup of sediment traps and dikes, and proper establishment of all planned vegetative measures will be the responsibility of the Developer or his representative on the site, on a continuing day to day basis.
- Protection of stabilized area from sediment runoff shall be provided by the use of an approved sediment control device, i.e. straw bales, diversion dikes, etc.
- Site Analysis:

Total Area:	8.182 Acres
Area to be Roofed:	1.214 Acres
Area to be Paved:	0.567 Acres
Area to be Seeded:	6.914 Acres
Area Undisturbed:	0.087 Acres
- The Contractor shall keep all public roads free of sediment deposits left from traffic leaving construction site.
- Stabilized Construction Entrances shall be constructed at all construction entrances.
- CONSTRUCTION SEQUENCE:
 - Install Sediment and Erosion Control Devices and stabilize Diversion Dikes.
 - Excavate for foundations and rough grade.
 - Erect Structures, driveways and sidewalks.
 - Final grade and stabilize in accordance with General Note #5.
- If Houses are to be constructed on an "As-Sold" basis at random, Single Lot Sediment Control, as shown on this sheet shall be implemented.
- It will be the Developer's responsibility, to provide additional Sediment and Erosion Control Devices to protect stabilized areas during construction.
- Total Amount of Straw Bales or Silt Fence = 280 LF.

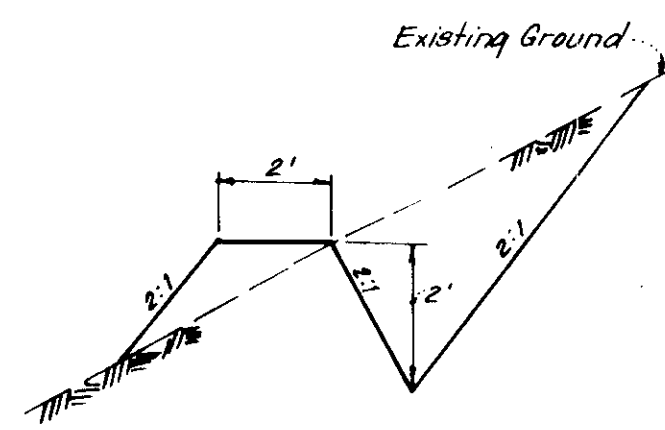


TYPICAL SINGLE LOT SEDIMENT CONTROL PLAN
No Scale

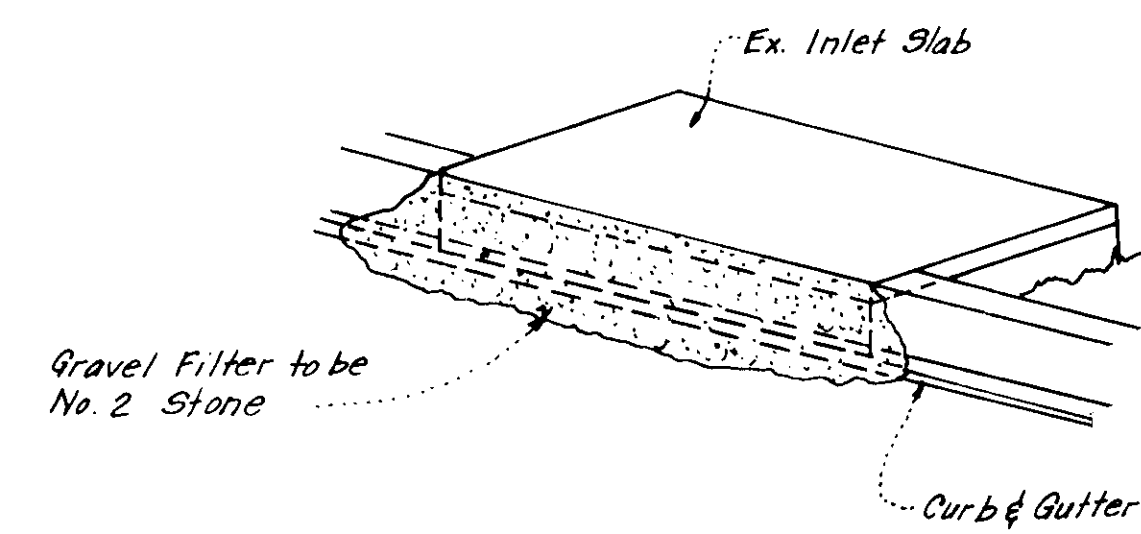


Note: In lieu of the use of rebars each straw bale may be fastened to ground with pegs (4 per bale and wire or nylon as shown above.)

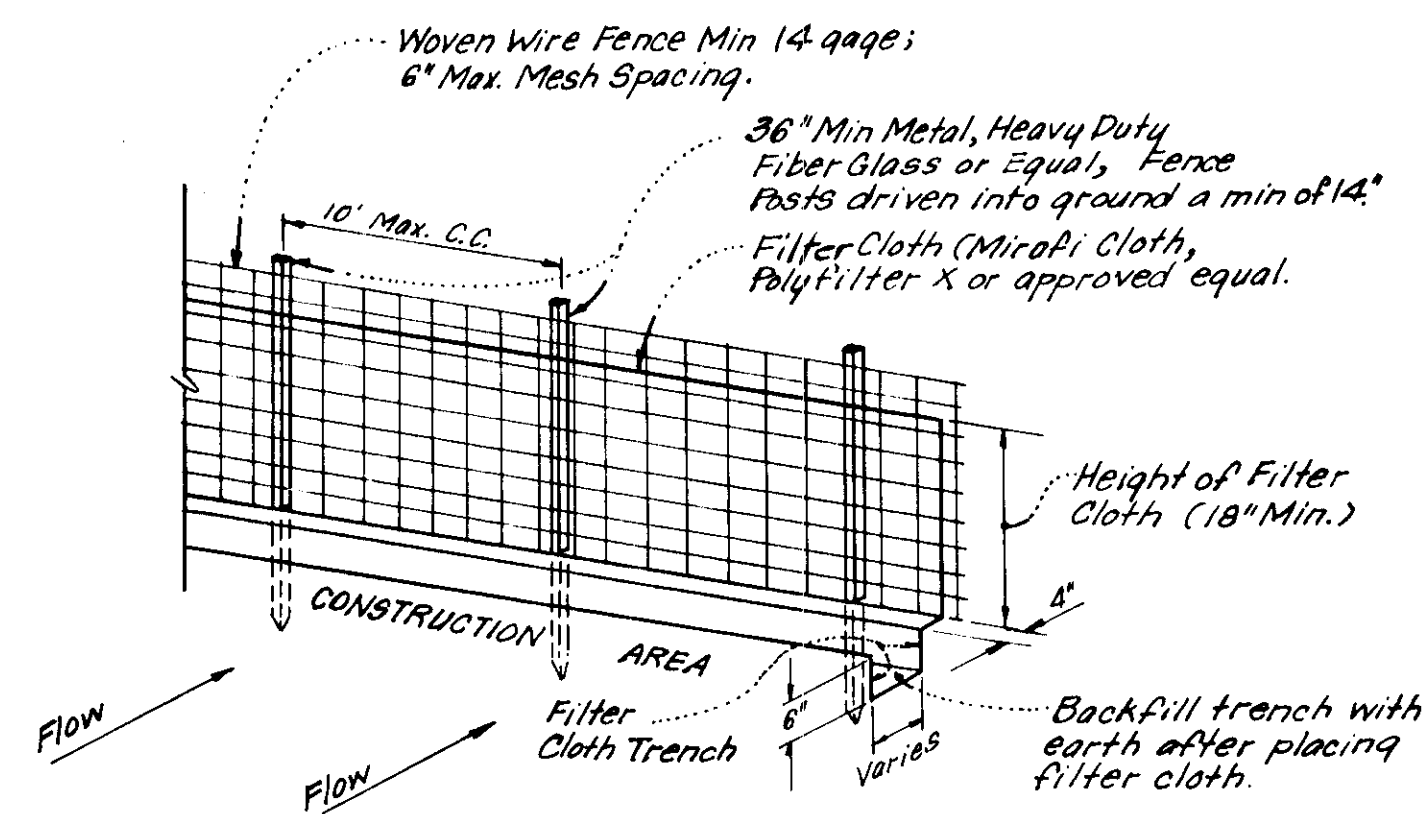
TYPICAL STRAW BALE DETAIL (S.B.D.)
No Scale



CUT DIVERSION DIKE
No Scale

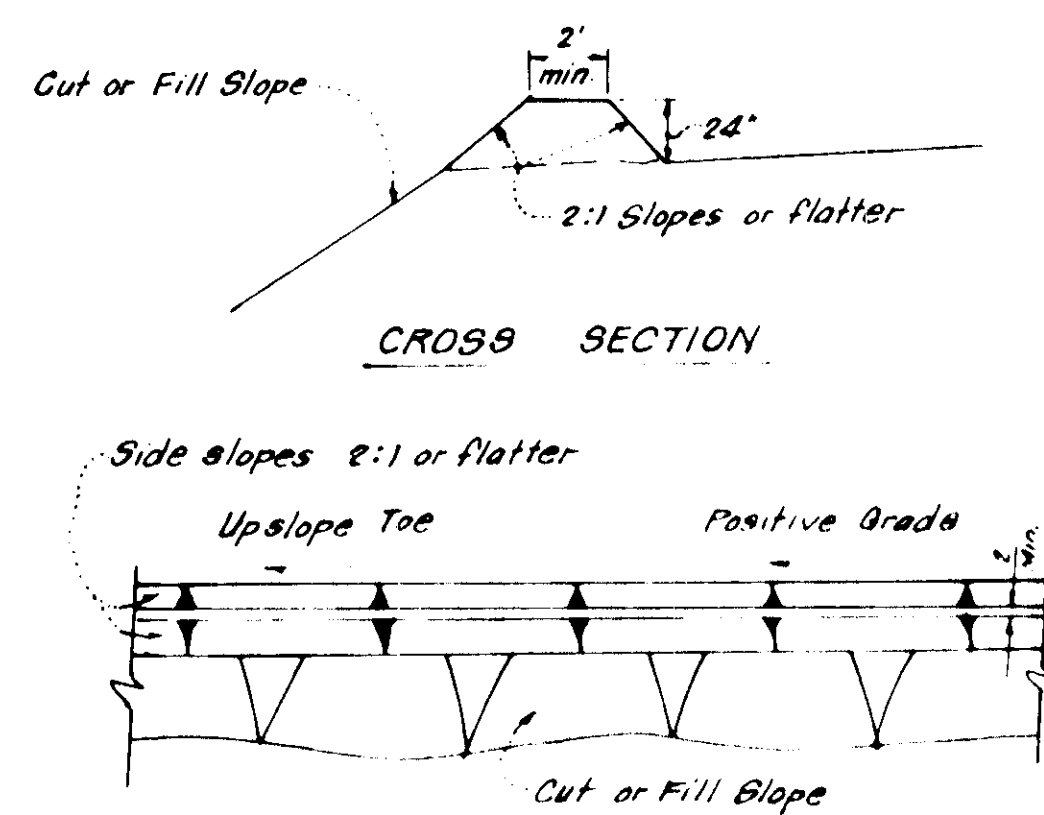


190METRIC VIEW

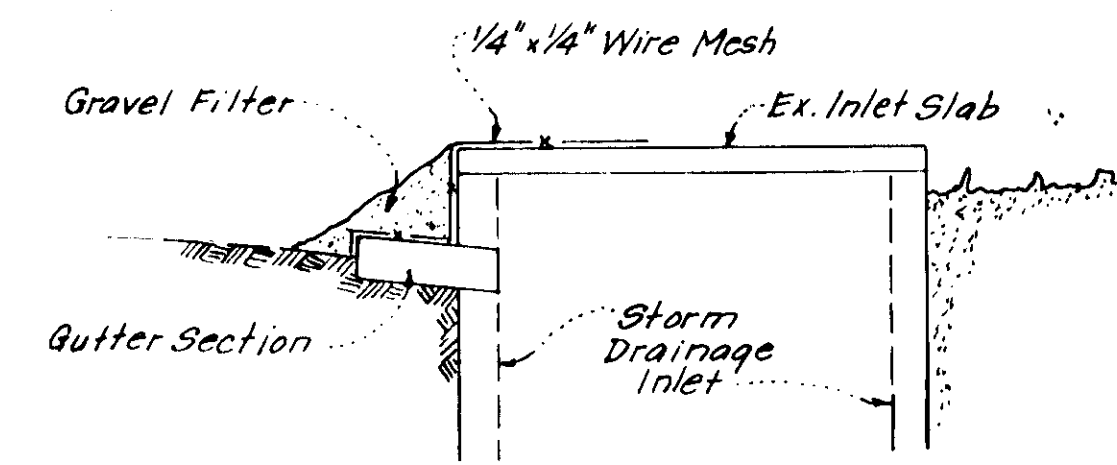


- NOTES:
- Woven Wire Fence to be fastened securely to fence posts by use of wire ties.
 - Filter Cloth to be fastened securely to woven wire fence by use of wire ties spaced every 24" x 24".

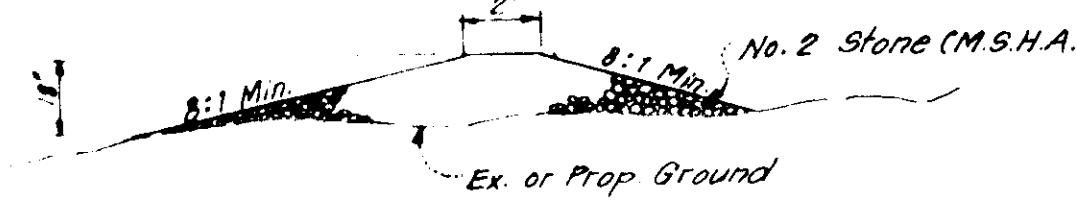
SILT FENCE DETAIL (S.F.)
NO SCALE



PLAN VIEW
DIVERSION DIKE (DD)
No Scale



SECTION VIEW
STONE FILTER INLET PROTECTION DETAIL (S.F.I.P.)
No Scale



SECTION VIEW
STONE CONSTRUCTION ENTRANCE DETAIL (SCE)
NO SCALE

APPROVED: FOR PUBLIC WATER AND PUBLIC SEWERAGE SYSTEMS, HOWARD COUNTY HEALTH DEPARTMENT.
[Signature] 2-21-77
COUNTY HEALTH OFFICER

APPROVED: HOWARD COUNTY OFFICE OF PLANNING & ZONING
PLANNING DIRECTOR *[Signature]* DATE 4-11-77
CHIEF, DIVISION OF LAND DEVELOPMENT

APPROVED: FOR PUBLIC WATER AND PUBLIC SEWERAGE STORM DRAINAGE SYSTEMS & PUBLIC ROADS, HOWARD COUNTY DEPARTMENT OF PUBLIC WORKS
[Signature] DATE 4-11-77
CHIEF, BUREAU OF HIGHWAYS

Reviewed for HOWARD COUNTY S.C.D. Name *[Signature]* and meets Technical Requirements C. Wayne Day 8/11/77 Signature Date
US Soil Conservation Service

THIS DEVELOPMENT PLAN IS APPROVED FOR SOIL EROSION AND SEDIMENT CONTROL BY THE HOWARD SOIL CONSERVATION DISTRICT.

[Signature] Approved Date 4-11-77

DEVELOPER'S CERTIFICATE

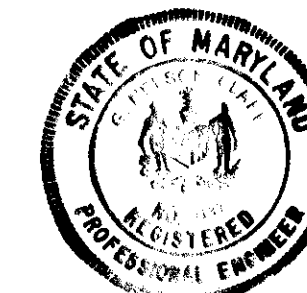
I certify that all development and/or construction will be done according to this plan of development and plan for Erosion and Sediment Control, and I also authorize periodic onsite inspection by the Howard Soil Conservation District or their authorized agents as are deemed necessary. I withdraw from this plan with the exception of the requirements of the Howard Soil Conservation District.

[Signature] 6/16/77
Signature Date

ENGINEER'S CERTIFICATE

I hereby certify that this plan for Erosion and Sediment Control represents a practical and workable plan based on my personal knowledge of the site conditions and that it was prepared in accordance with the requirements of the Howard Soil Conservation District.

[Signature] 6-16-77
G. Nelson Clark Date



APPROVED
PLANNING BOARD
OF HOWARD COUNTY
DATE 7-6-77

CLARK • FINEFROCK & SACKETT ENGINEERS • PLANNERS • SURVEYORS 11315 LOCKWOOD DRIVE • SILVER SPRING, MARYLAND 20904 • (301) 593-3400		
DESIGNED D.B.S.	SITE DEVELOPMENT PLAN SEDIMENT & EROSION CONTROL PLAN LOTS 176 THRU 193 & LOTS 212 THRU 234 LOTS 233 THRU 238 COLUMBIA VILLAGE OF KINGS CONTRIVANCE SECTION 1, AREA 1 6TH ELECTION DISTRICT HOWARD COUNTY, MARYLAND FOR: THE RYLAND GROUP, INC. (Col. Division) Suite 200 V.O.M. OFFICE Bldg. Columbia, Maryland 21045 SDP-77-100c See Also HC 300 1242-X	SCALE As Shown
DRAWN K.I.W.		DRAWING 5 of 5
CHECKED G.N.C.	JOB NO.	
DATE June, 1976	FILE NO. 1245-SE	