

LOCATION PLAN

Reviewed for Howard SCD and meets Technical Requirements

Wanted Details DATE 9-16-77

The development plan is approved for a 100% & 50% development control by the Howard Soil Conservation District.

Approved John D. Myers DATE 9-16-77

CERTIFICATION BY DEVELOPER: I certify that all development and/or construction will be done according to this plan of development and/or construction and that I have provided in accordance with the requirements of the Howard Soil Conservation District...

James T. Ramey DATE 7-2-76

CERTIFICATION BY PROFESSIONAL ENGINEER: I certify that this plan for erosion and sediment control represents a detailed and workable plan based on an on-site inspection of the site conditions and that it has been prepared in accordance with the requirements of the Howard Soil Conservation District.



6-28-77
J. Robert Casell
2027 White Stone Rd
Baltimore, MD 21207

Approved for Public Water and Public Sewerage Systems, Howard County Health Dept.

Approved for Planning & Zoning

Approved for Planning & Zoning

Approved for Public Water, Public Sewerage and Storm Drainage Systems, Howard County Department of Public Works

Approved for Public Works

Approved for Public Works

Approved for Public Works

Approved for Public Works

Approved for Public Works

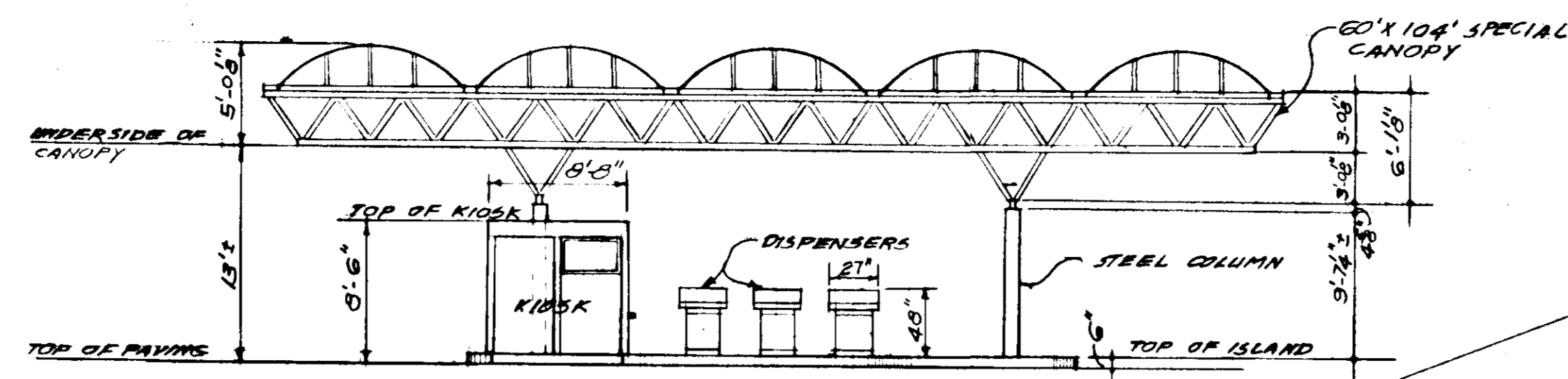
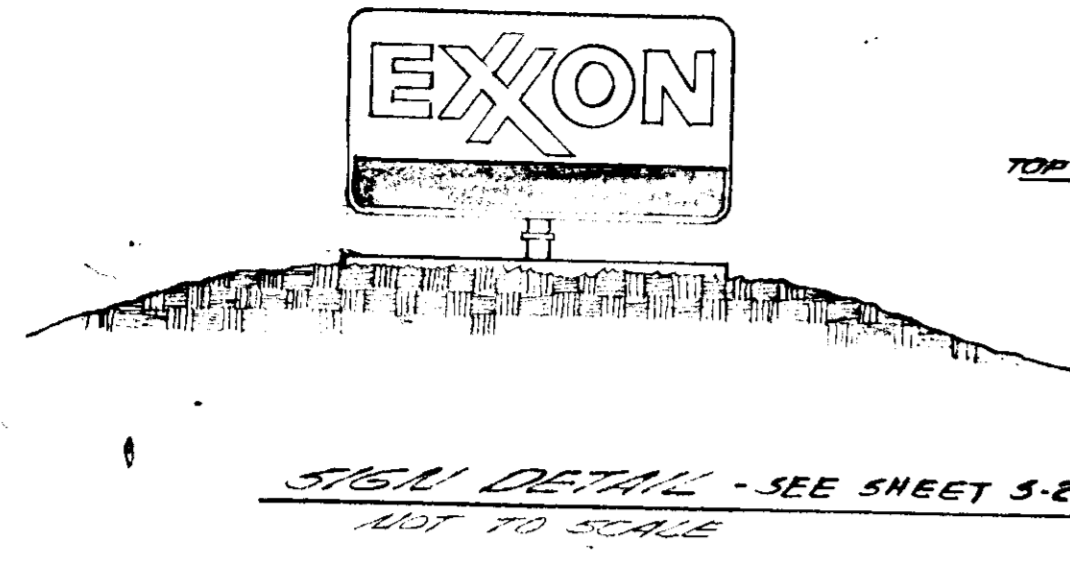
Approved for Public Works

Approved for Public Works

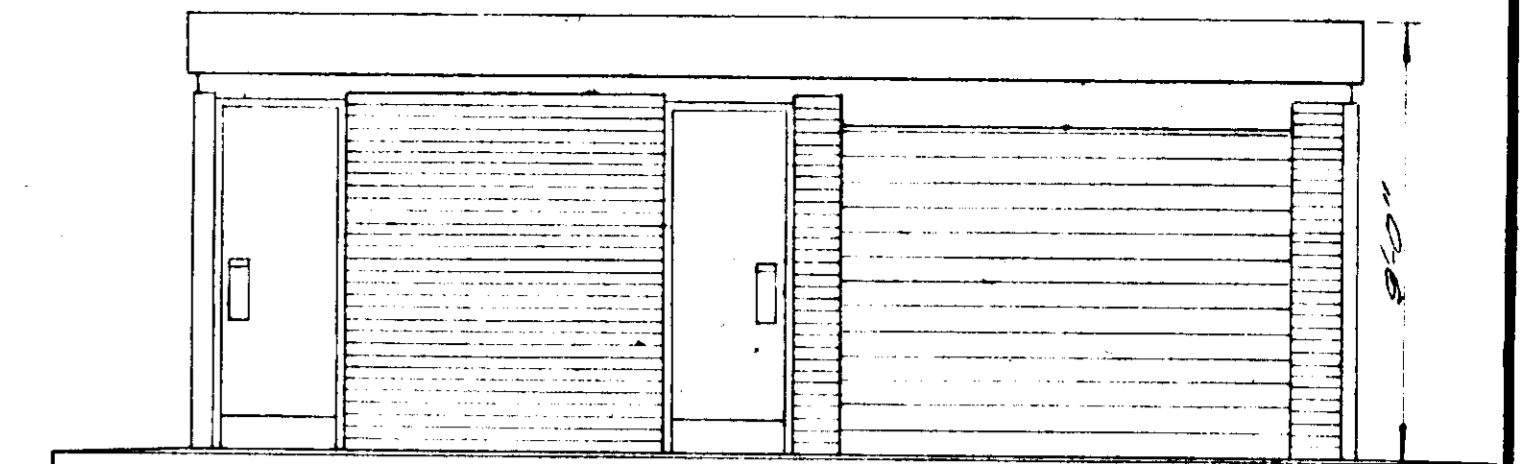
Approved for Public Works

Approved for Public Works

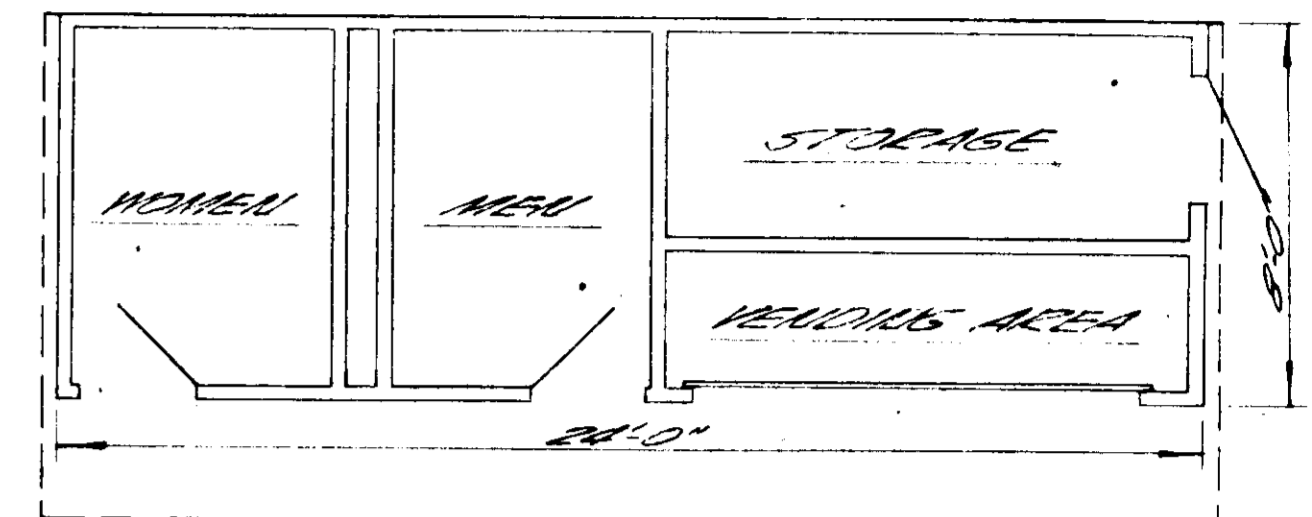
Approved for Public Works



ELEVATION "X-X" SHOWING CANOPY, KIOSK AND DISPENSERS SCALE: 1/8" = 1'-0"

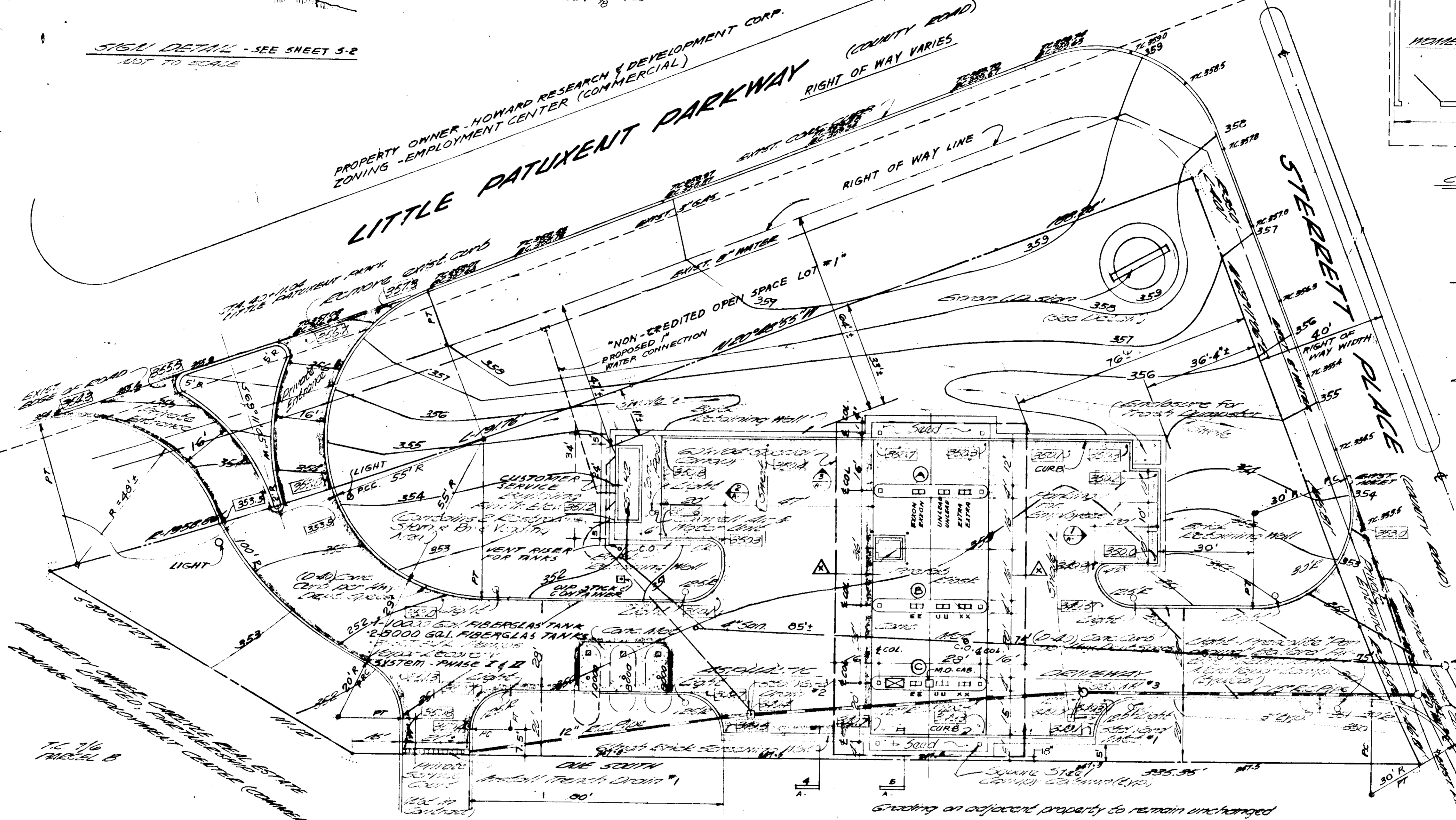


ELEVATION



FLOOR PLAN

CUSTOMER SERVICE ISLAND SCALE: 1/4" = 1'-0"



PROPERTY OWNER: HOWARD RESEARCH & DEVELOPMENT CORP.
ZONING: EMPLOYMENT CENTER (COMMERCIAL)

APPROVED
PLANNING BOARD
OF HOWARD COUNTY
DATE: 8-31-77

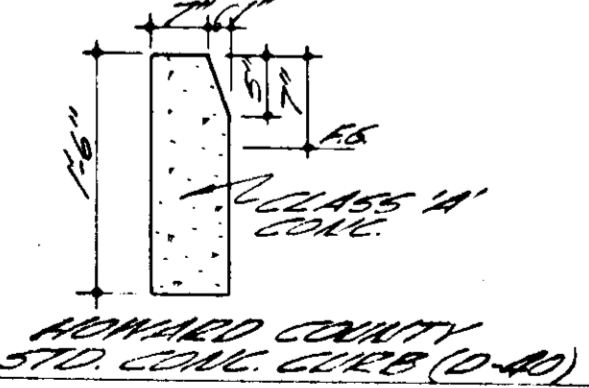
- NOTES:
- 1. ALL CONSTRUCTION SHALL BE IN ACCORDANCE WITH THE LATEST EDITIONS OF THE MARYLAND CONSTRUCTION CODE AND THE MARYLAND EROSION CONTROL AND SEDIMENTATION CONTROL ACT.
 - 2. ALL CONSTRUCTION SHALL BE IN ACCORDANCE WITH THE LATEST EDITIONS OF THE MARYLAND CONSTRUCTION CODE AND THE MARYLAND EROSION CONTROL AND SEDIMENTATION CONTROL ACT.
 - 3. ALL CONSTRUCTION SHALL BE IN ACCORDANCE WITH THE LATEST EDITIONS OF THE MARYLAND CONSTRUCTION CODE AND THE MARYLAND EROSION CONTROL AND SEDIMENTATION CONTROL ACT.
 - 4. ALL CONSTRUCTION SHALL BE IN ACCORDANCE WITH THE LATEST EDITIONS OF THE MARYLAND CONSTRUCTION CODE AND THE MARYLAND EROSION CONTROL AND SEDIMENTATION CONTROL ACT.
 - 5. ALL CONSTRUCTION SHALL BE IN ACCORDANCE WITH THE LATEST EDITIONS OF THE MARYLAND CONSTRUCTION CODE AND THE MARYLAND EROSION CONTROL AND SEDIMENTATION CONTROL ACT.
 - 6. ALL CONSTRUCTION SHALL BE IN ACCORDANCE WITH THE LATEST EDITIONS OF THE MARYLAND CONSTRUCTION CODE AND THE MARYLAND EROSION CONTROL AND SEDIMENTATION CONTROL ACT.
 - 7. ALL CONSTRUCTION SHALL BE IN ACCORDANCE WITH THE LATEST EDITIONS OF THE MARYLAND CONSTRUCTION CODE AND THE MARYLAND EROSION CONTROL AND SEDIMENTATION CONTROL ACT.
 - 8. ALL CONSTRUCTION SHALL BE IN ACCORDANCE WITH THE LATEST EDITIONS OF THE MARYLAND CONSTRUCTION CODE AND THE MARYLAND EROSION CONTROL AND SEDIMENTATION CONTROL ACT.
 - 9. ALL CONSTRUCTION SHALL BE IN ACCORDANCE WITH THE LATEST EDITIONS OF THE MARYLAND CONSTRUCTION CODE AND THE MARYLAND EROSION CONTROL AND SEDIMENTATION CONTROL ACT.
 - 10. ALL CONSTRUCTION SHALL BE IN ACCORDANCE WITH THE LATEST EDITIONS OF THE MARYLAND CONSTRUCTION CODE AND THE MARYLAND EROSION CONTROL AND SEDIMENTATION CONTROL ACT.

PUMP ISLANDS (A) & (B) ARE SELF-SERVE PUMP ISLANDS WITH EACH ISLAND EQUIPPED WITH 3-251-0 SELF-DISPENSERS, OPERATING OFF A TRANSAC 1/2 POSITION CONSOLE IN THE KIOSK.

PUMP ISLAND (C) IS TO BE A FULL-SERVE PUMP ISLAND WITH 3-251-0 CONVENTIONAL DISPENSERS, 1 MOTOR OIL CABINET AND 3 1/2" METAL & GLASS ISLAND SHELTER.

NO. OF EMPLOYEES - 2
PARKING SPACES REQUIRED - 2
PARKING SPACES PROVIDED - 3

REQUIRED SURVEY BY CONAD REALTY
5'00" CORNER, BENCH COURSE (CONAD)
1/4" CORNER, BENCH COURSE (CONAD)
BY: CONAD & TRAC CO. (CONAD, C-30-3 & C-31-4)



HOWARD COUNTY 570 CORN. CURB (0-40)

CANOPY FOOTER NOTE
TOP OF ALL CONCRETE COLUMN FOOTINGS SHALL BE FINISHED AT THE SAME ELEVATION AS THE FINISH GRADE TO WHICH ALL OF THE COLUMN'S SHALL BE SET. THE FINISH GRADE SHALL BE DETERMINED BY THE SURVEYOR'S BUSINESS.

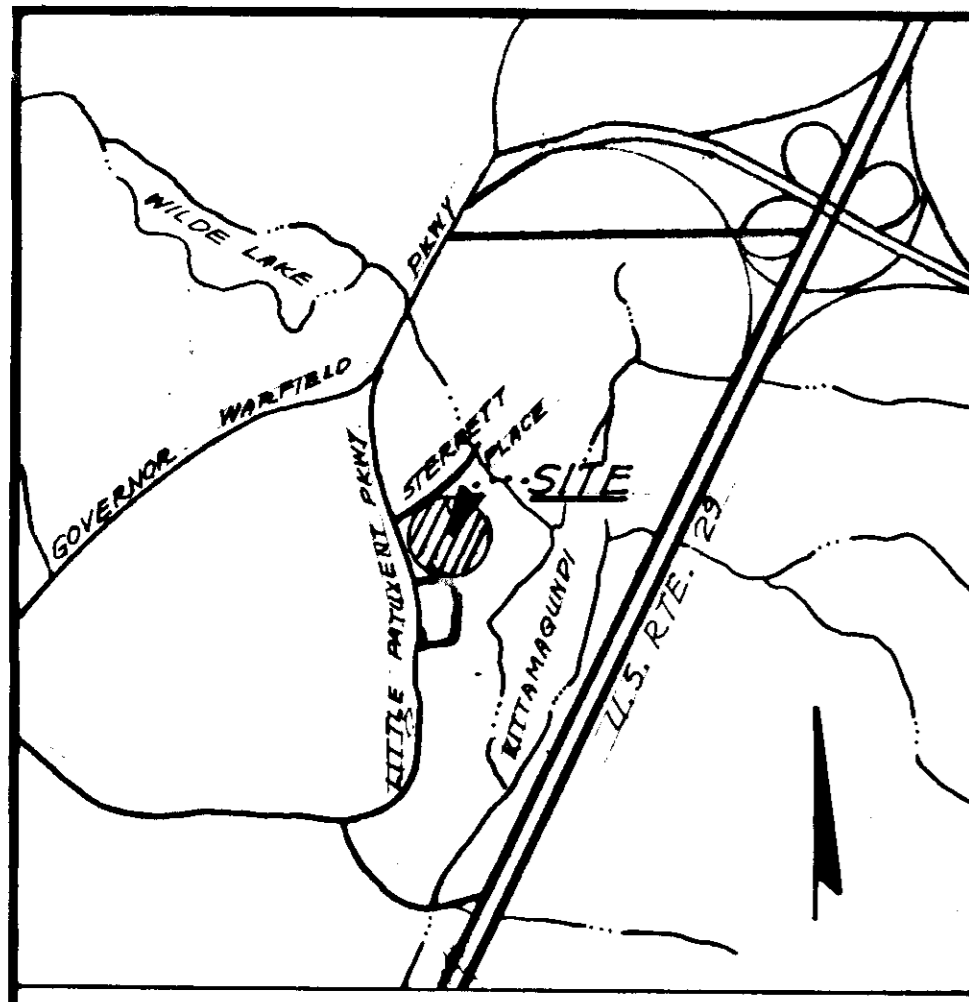
EXXON COMPANY, U.S.A.
(A DIVISION OF EXXON CORPORATION)
POST OFFICE BOX 1288
BALTIMORE, MARYLAND 21203

SITE DEVELOPMENT PLAN
TOWN CENTER, SECTION 7, AREA G
PARCEL "A" SERVICE STATION
HOWARD COUNTY, MARYLAND
ELECTION DISTRICT - FIFTH

DRAWN BY: K. BILZ
CHECKED BY:
APPROVED BY:
SCALE: 1" = 20'

5 E. CORNER
LITTLE PATUXENT PARKWAY
& STEBBETT PLACE
COLUMBIA, MARYLAND

DATE: 8-31-77
FILE NO.: 7709
SHEET: 1 OF 10
DWG. NO.: SP-1



LOCATION PLAN

REVIEWED FOR HOWARD S.C.D. AND MEETS TECHNICAL REQUIREMENTS.

Alma Bunde DATE 9-16-77
SIGNATURE U.S. SOIL CONSERVATION SERVICE

THIS DEVELOPMENT PLAN IS APPROVED FOR SOIL EROSION & SEDIMENT CONTROL BY THE HOWARD SOIL CONSERVATION DISTRICT.

APPROVED *John D. Mason* DATE 9-16-77
(HOWARD S.C.D.)

CERTIFICATION BY DEVELOPER
"I CERTIFY THAT ALL DEVELOPMENT AND/OR CONSTRUCTION WILL BE DONE ACCORDING TO THIS PLAN OF DEVELOPMENT AND PLAN FOR EROSION AND SEDIMENT CONTROL, AND I ALSO AUTHORIZE PERIODIC ON-SITE INSPECTION BY THE HOWARD SOIL CONSERVATION DISTRICT OR THEIR AUTHORIZED AGENTS, AS ARE DEEMED NECESSARY."

James T. Ramsey DATE 6/23/77
SIGNATURE EXXON CO., S.A.

CERTIFICATION BY THE PROFESSIONAL ENGINEER
"I CERTIFY THAT THIS PLAN FOR EROSION AND SEDIMENT CONTROL REPRESENTS A PRACTICAL AND WORKABLE PLAN BASED ON MY PERSONAL KNOWLEDGE OF THE SITE CONDITIONS AND THAT IT WAS PREPARED IN ACCORDANCE WITH THE REQUIREMENTS OF THE HOWARD SOIL CONSERVATION DISTRICT."



DATE 6/24/77
Robert A. Quall
SIGNATURE
6227 Whitestone Rd
Columbia, MD 21207
ADDRESS

APPROVED FOR PUBLIC WATER AND PUBLIC SEWERAGE SYSTEMS. HOWARD COUNTY HEALTH DEPT.

John M. Jordan DATE 10-7-77
COUNTY HEALTH OFFICER

APPROVED: HOWARD COUNTY OFFICE OF PLANNING & ZONING

John C. Clouse DATE 10/2/77
PLANNING DIRECTOR
Richard M. Mearns DATE 10-7-77
CHIEF, DIV. OF LAND DEVELOPMENT

APPROVED FOR PUBLIC WATER, PUBLIC SEWERAGE AND STORM DRAINAGE SYSTEMS, AND ROADS. HOWARD COUNTY DEPARTMENT OF PUBLIC WORKS.

D. J. Rosand DATE 9-20-77
DIRECTOR OF PUBLIC WORKS

W. H. Wood DATE 7/28/77
CHIEF, BUR. OF HIGHWAYS

THIS BLUEPRINT IS LOANED TO YOU AND MUST BE RETURNED WHEN IT HAS SERVED THE PURPOSE FOR WHICH INTENDED

REVISIONS:
5/13/77
6/16/77
6/26/77

REVISIONS:

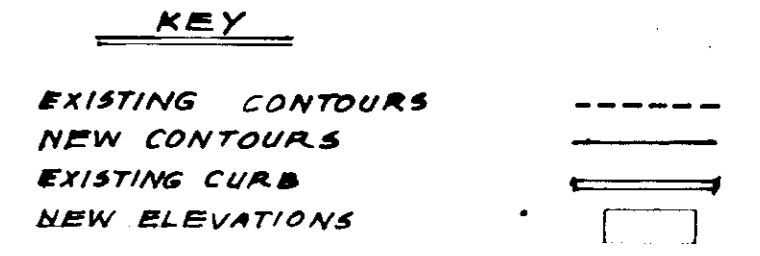
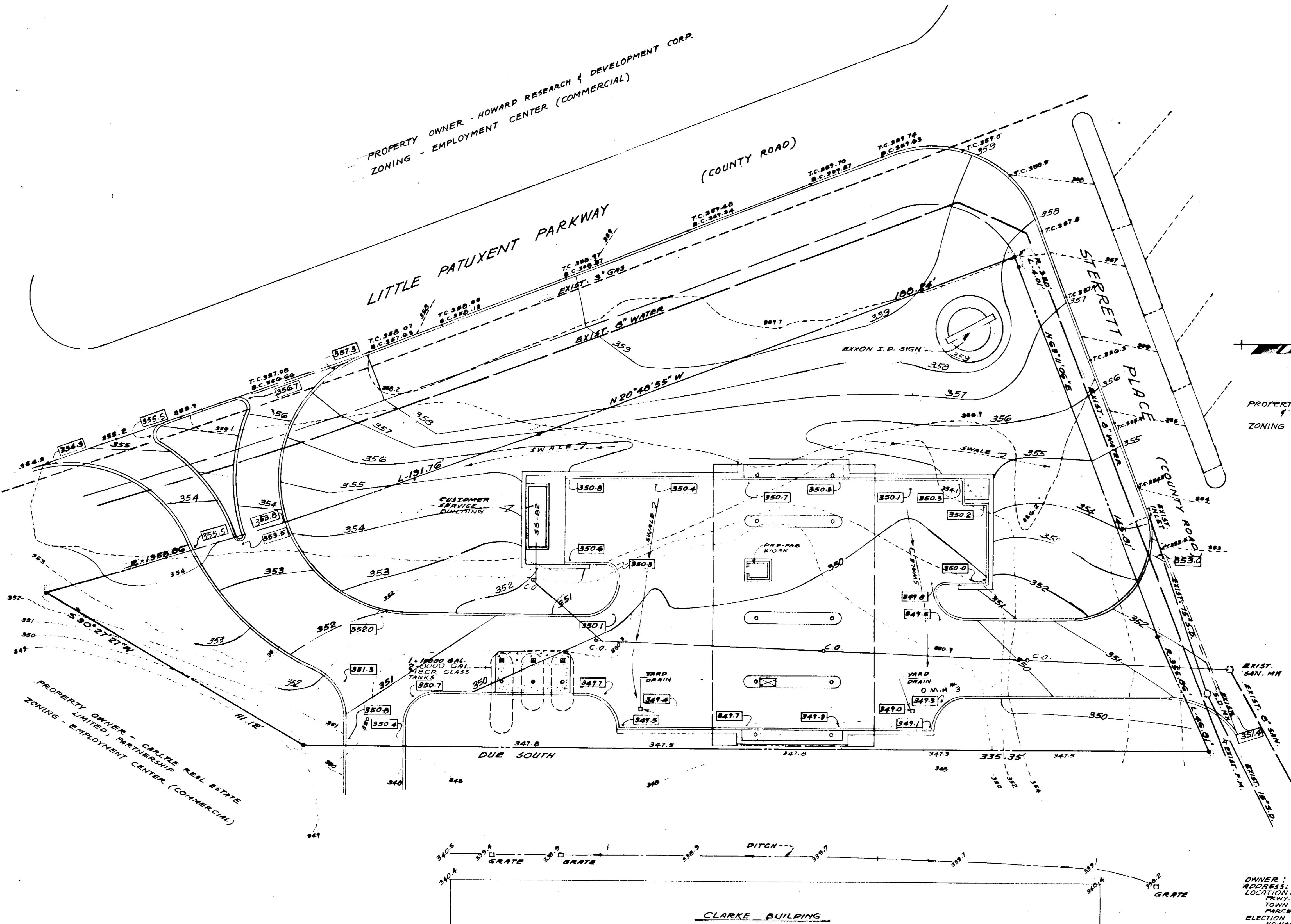
EXXON COMPANY, U.S.A.
(A DIVISION OF EXXON CORPORATION)
POST OFFICE BOX 1288
BALTIMORE, MARYLAND 21203

GRADING PLAN

DRAWN BY: LORI LIM
CHECKED BY:
APPROVED BY:
SCALE: 1" = 20'

S.E. CORNER
LITTLE PATUXENT PKWY.
& STERRETT PLACE
COLUMBIA, MARYLAND

DATE: NOV. 9, 1976
FILE NO.: 7709
SHEET NO.: 2 OF 10
DWG. NO.: SDP-2



PROPERTY OWNER - HOWARD RESEARCH & DEVELOPMENT CORP.
ZONING - EMPLOYMENT CENTER (COMMERCIAL)

APPROVED
PLANNING BOARD
OF HOWARD COUNTY
DATE 8-31-77

OWNER: EXXON CORPORATION
ADDRESS: POST OFFICE BOX 1288, BALTIMORE, MD. 21203
LOCATION: S.E. CORNER OF LITTLE PATUXENT PARKWAY & STERRETT PLACE, COLUMBIA TOWN CENTER, SECTION 7, AREA 6 PARCEL 8, HOWARD COUNTY MAP ELECTION DISTRICT: 5TH ELECT. DISTRICT - HOWARD COUNTY TAX MAP ZONING: COMMERCIAL - EMPLOYMENT CENTER "EDP #1" SEE PLANNING BOARD CASE #709. BOUNDARY AS SHOWN PER RECORD PLAT - "COLUMBIA TOWNCENTER, SECTION 7, AREA 6, RESUBDIVISION OF SECTION 7, AREAS 814 SHEET 1 OF 1, DATED APRIL 2, 1971, RECORDED PLAT BOOK 21, FOLIO 56 TOTAL AREA OF PARCEL: 1.04 AC. ± TOTAL AREA OF SITE: 1.04 AC. ± TAX MAP NO. 30



REVIEWED FOR HOWARD S.C.D. AND MEETS TECHNICAL REQUIREMENTS.

Wendell Bonelli DATE 9-18-77
SIGNATURE U.S. SOIL CONSERVATION SERVICE

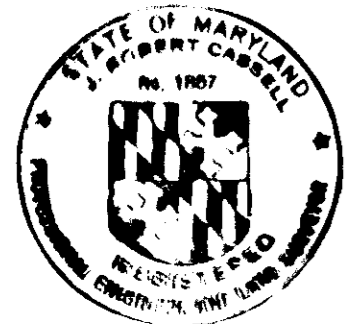
THIS DEVELOPMENT PLAN IS APPROVED FOR SOIL EROSION & SEDIMENT CONTROL BY THE HOWARD SOIL CONSERVATION DISTRICT.

APPROVED *John D. Meyer* DATE 9-16-77
HOWARD S.C.D.

CERTIFICATION BY DEVELOPER
"I CERTIFY THAT ALL DEVELOPMENT AND/OR CONSTRUCTION WILL BE DONE ACCORDING TO THIS PLAN OF DEVELOPMENT AND PLAN FOR EROSION AND SEDIMENT CONTROL, AND I ALSO AUTHORIZE PERIODIC ON-SITE INSPECTION BY THE HOWARD SOIL CONSERVATION DISTRICT OR THEIR AUTHORIZED AGENTS, AS ARE DEEMED NECESSARY."

James T. Lanson 6/23/77
SIGNATURE, EXXON CO. U.S.A. DATE

CERTIFICATION BY THE PROFESSIONAL ENGINEER
"I CERTIFY THAT THIS PLAN FOR EROSION AND SEDIMENT CONTROL REPRESENTS A PRACTICAL AND WORKABLE PLAN BASED ON MY PERSONAL KNOWLEDGE OF THE SITE CONDITIONS AND THAT IT WAS PREPARED IN ACCORDANCE WITH THE REQUIREMENTS OF THE HOWARD SOIL CONSERVATION DISTRICT."



6-24-77
DATE
Robert Beull
SIGNATURE
6707 Whidstone Rd
Baltimore 21207
ADDRESS

APPROVED: FOR PUBLIC WATER AND PUBLIC SEWERAGE SYSTEMS, HOWARD COUNTY HEALTH DEPT.

William Bonham 10-7-77
COUNTY HEALTH OFFICER DATE

APPROVED: HOWARD COUNTY OFFICE OF PLANNING & ZONING

John W. Johnson 10/6/77
PLANNING DIRECTOR DATE
Phillip Musselwhite 10-7-77
CHIEF, DIV. OF LAND DEVELOPMENT DATE

APPROVED: FOR PUBLIC WATER, PUBLIC SEWERAGE AND STORM DRAINAGE SYSTEMS, AND ROADS, HOWARD COUNTY DEPARTMENT OF PUBLIC WORKS.

P. A. Regan 9-28-77
DIRECTOR OF PUBLIC WORKS DATE

W. W. Wells & Co. Inc. 9/28/77
CHIEF, BUR. OF HIGHWAYS DATE

THIS BLUEPRINT IS LOANED TO YOU AND MUST BE RETURNED WHEN IT HAS SERVED THE PURPOSE FOR WHICH INTENDED

REVISIONS:
SELL REV NOTES & DIMENSIONS

5/31/77
6/21/77

REVISIONS:

EXXON COMPANY, U.S.A.
(A DIVISION OF EXXON CORPORATION)
POST OFFICE BOX 1288
BALTIMORE, MARYLAND 21203

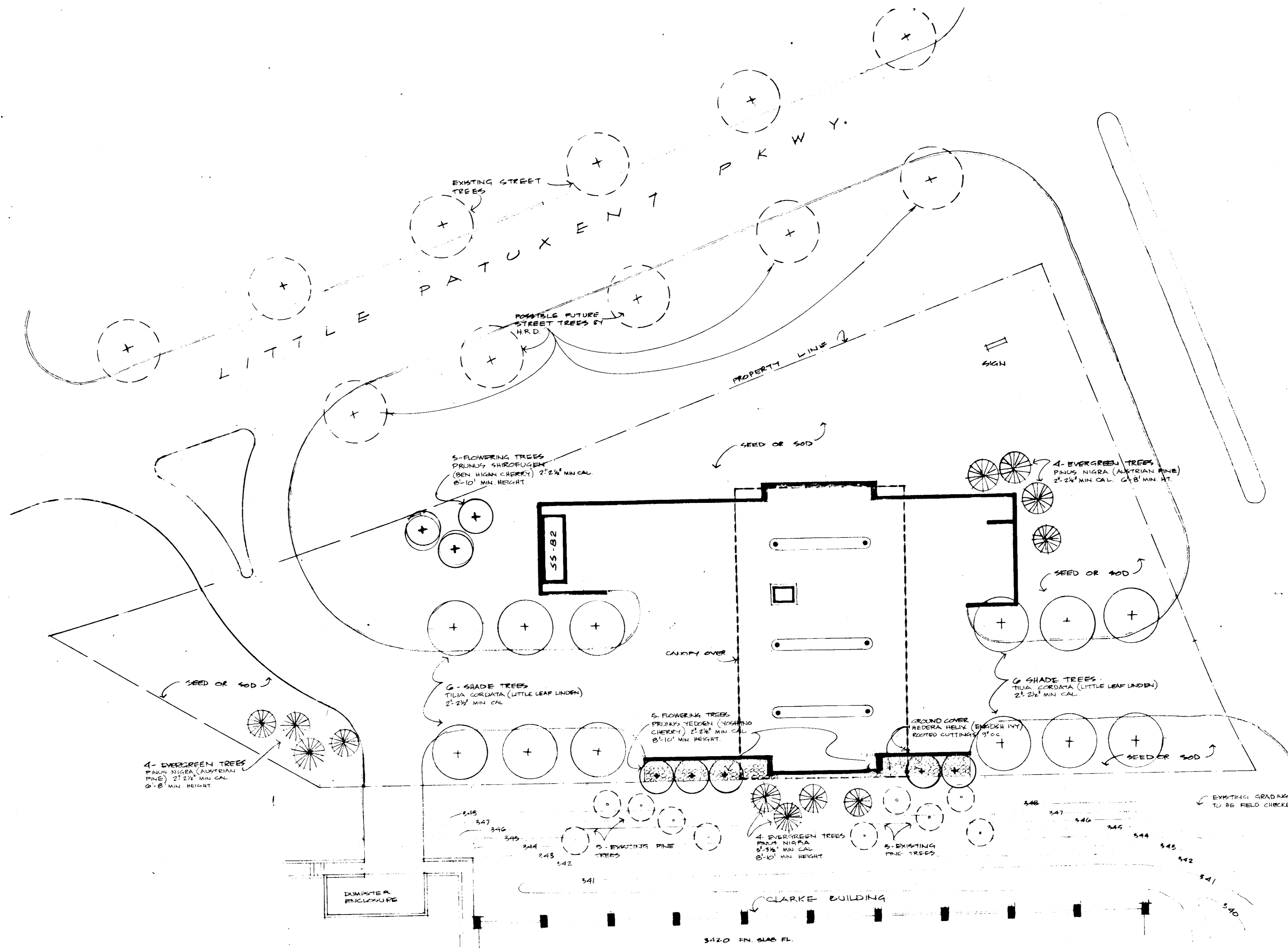
100-116, 100-117
LANDSCAPE PLAN

DRAWN BY: K. BILZ
CHECKED BY:
APPROVED BY:
SCALE: 1"=20'

SE. CORNER
LITTLE PATENTMENT PENY.
& STEWETT PLACE
COLUMBIA, MARYLAND

DATE: 8-31-77
FILE NO.: 7709
SHEET NO.: 3 OF 3
D.W. NO.: SP-3

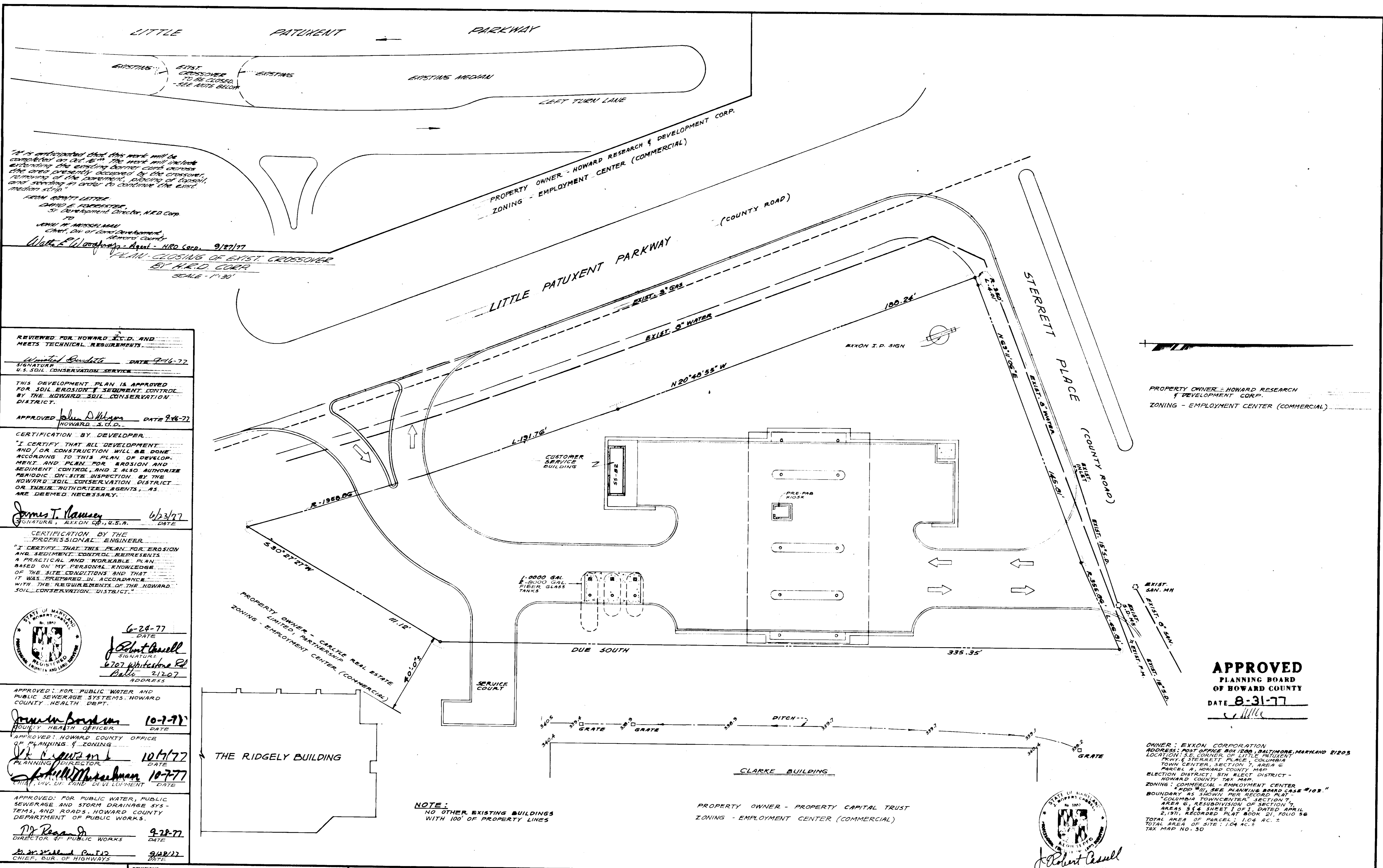
SDP-77-91c



APPROVED
PLANNING BOARD
OF HOWARD COUNTY
DATE 8-31-77



Robert Beull



"It is anticipated that this work will be completed by 10/1/77. The work will include extending the existing concrete curb across the area presently occupied by the crossover, removing of the pavement, placing of base and grading in order to continue the existing street."

FROM COUNTY LETTER
 DAVID E. FREDERICKS
 Sr. Development Director, M.E.D. Corp.
 TO
 JOHN W. BRISCOLMAN
 Chief, Div. of Land Development
 Howard County
 Walter P. Wagoner, Jr. - Agent - M.E.D. Corp. 9/27/77

PLAN: CLOSING OF EXIST. CROSSOVER
 BY M.E.D. CORP.
 SCALE - 1"=30'

REVIEWED FOR HOWARD I.C.D. AND MEETS TECHNICAL REQUIREMENTS

Walter P. Wagoner, Jr. DATE 9-16-77
 SIGNATURE
 U.S. SOIL CONSERVATION SERVICE

THIS DEVELOPMENT PLAN IS APPROVED FOR SOIL EROSION & SEDIMENT CONTROL BY THE HOWARD SOIL CONSERVATION DISTRICT.

APPROVED John D. Morgan DATE 9-16-77
 HOWARD I.C.D.

CERTIFICATION BY DEVELOPER
 "I CERTIFY THAT ALL DEVELOPMENT AND/OR CONSTRUCTION WILL BE DONE ACCORDING TO THIS PLAN OF DEVELOPMENT AND PLAN FOR EROSION AND SEDIMENT CONTROL, AND I ALSO AUTHORIZE PERIODIC ON-SITE INSPECTION BY THE HOWARD SOIL CONSERVATION DISTRICT OR THEIR AUTHORIZED AGENTS, AS ARE DEEMED NECESSARY."

James T. Lanney DATE 6/23/77
 SIGNATURE EXXON CO., U.S.A.

CERTIFICATION BY THE PROFESSIONAL ENGINEER
 "I CERTIFY THAT THIS PLAN FOR EROSION AND SEDIMENT CONTROL REPRESENTS A PRACTICAL AND WORKABLE PLAN, BASED ON MY PERSONAL KNOWLEDGE OF THE SITE CONDITIONS AND THAT IT WAS PREPARED IN ACCORDANCE WITH THE REQUIREMENTS OF THE HOWARD SOIL CONSERVATION DISTRICT."

6-24-77 DATE
Robert Casull SIGNATURE
 6707 Whitestone Rd. Address
 Baltimore 21207

APPROVED FOR PUBLIC WATER AND PUBLIC SEWERAGE SYSTEMS - HOWARD COUNTY HEALTH DEPT.

John M. Boylan DATE 10-7-77
 COUNTY HEALTH OFFICER

APPROVED HOWARD COUNTY OFFICE OF PLANNING & ZONING

John M. Boylan DATE 10/17/77
 PLANNING DIRECTOR

John M. Boylan DATE 10-7-77
 CHIEF, DIV. OF LAND DEVELOPMENT

APPROVED FOR PUBLIC WATER, PUBLIC SEWERAGE AND STORM DRAINAGE SYSTEMS, AND ROADS - HOWARD COUNTY DEPARTMENT OF PUBLIC WORKS.

John M. Boylan DATE 9-22-77
 DIRECTOR OF PUBLIC WORKS

John M. Boylan DATE 9-22-77
 CHIEF, BUR. OF HIGHWAYS

THIS BLUEPRINT IS LOANED TO YOU AND MUST BE RETURNED WHEN IT HAS SERVED THE PURPOSE FOR WHICH INTENDED

REVISIONS:

SELL REV	5/3/77
NOTES & DIMENSIONS	6/21/77
ADDED MEDIAN CROSSOVER CLOSING PLAN	9-1-77

EXXON COMPANY, U.S.A.
 (A DIVISION OF EXXON CORPORATION)
 POST OFFICE BOX 1288
 BALTIMORE, MARYLAND 21203

SUPPLEMENTARY SITE PLAN
 SHOWING DECELERATION LANE & NEARBY BUILDING

DRAWN BY: LORI LIM
 CHECKED BY:
 APPROVED BY:
 SCALE: 1"=20'

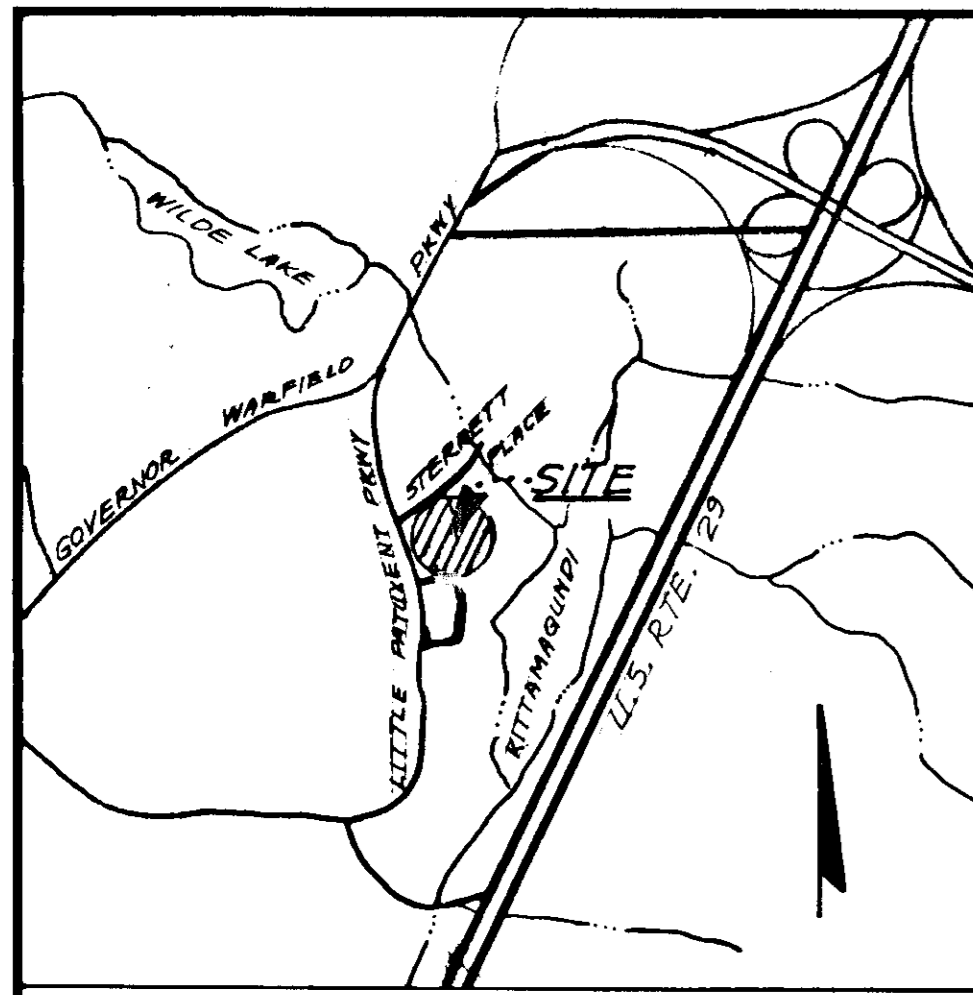
S.E. CORNER
 LITTLE PATUXENT PKWY.
 & STERRETT PLACE
 COLUMBIA, MARYLAND

DATE: NOV. 5, 1976
 FILE NO.: 7709
 SHEET NO.: 4 OF 10
 DWG. NO.: SP-4

APPROVED
 PLANNING BOARD
 OF HOWARD COUNTY
 DATE 8-31-77

OWNER: EXXON CORPORATION
 ADDRESS: POST OFFICE BOX 1288, BALTIMORE, MARYLAND 21203
 LOCATION: S.E. CORNER OF LITTLE PATUXENT PKWY & STERRETT PLACE, COLUMBIA TOWN CENTER, SECTION 7, AREA 6
 PARCEL A, HOWARD COUNTY MAP
 ELECTION DISTRICT: 5TH ELECT DISTRICT - HOWARD COUNTY TAX MAP
 ZONING: COMMERCIAL - EMPLOYMENT CENTER
 BOUNDARY AS SHOWN PER RECORD PLAN "COLUMBIA TOWNCENTER" SECTION 7, AREA 6, RESUBDIVISION OF SECTION 7, AREAS 5 & 6 SHEET 1 OF 1, DATED APRIL 2, 1971, RECORDED PLAT BOOK 21, FOLIO 56
 TOTAL AREA OF PARCEL: 1.04 AC. ±
 TOTAL AREA OF SITE: 1.04 AC. ±
 TAX MAP NO. 30

SDP-77-91c



LOCATION PLAN

DRAINAGE AREA CALCULATION

A = .26 (A) 48% @ .90
C = .59

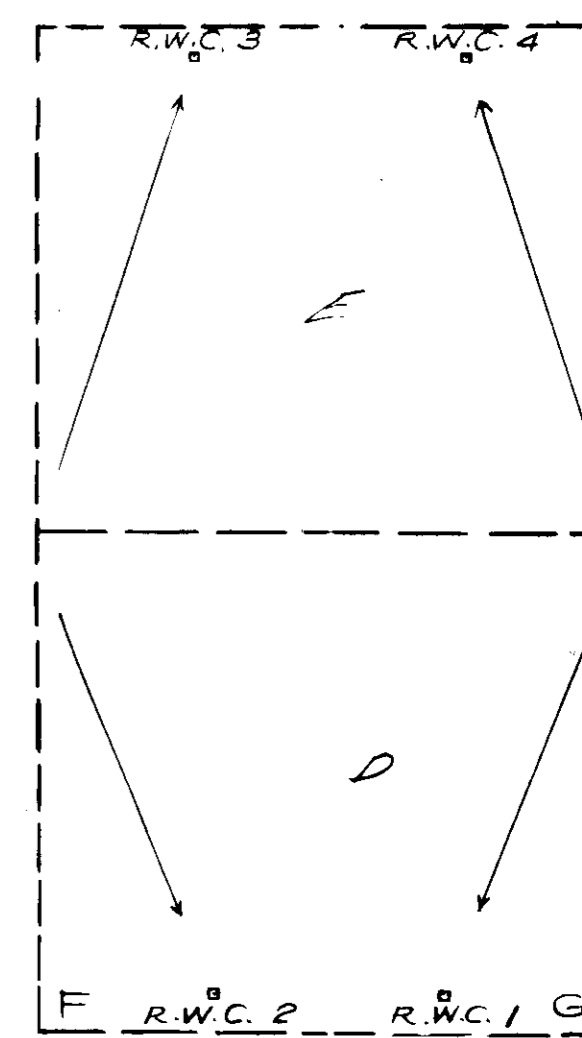
A = .35 (B) 43% @ .9
C = .56

A = .57 (C) 24% @ .9
C = .44

A = .07 (D) 100% @ .95
C = .95

A = .07 (E) 100% @ .95
C = .95

PROPERTY OWNER - HOWARD RESEARCH & DEVELOPMENT CORP.
ZONING - EMPLOYMENT CENTER (COMMERCIAL)



CANOPY DETAIL

REVIEWED FOR HOWARD S.C.D. AND MEETS TECHNICAL REQUIREMENTS.

Signature: *Christina Bendette* DATE 9-16-77
U.S. SOIL CONSERVATION SERVICE

THIS DEVELOPMENT PLAN IS APPROVED FOR SOIL EROSION & SEDIMENT CONTROL BY THE HOWARD SOIL CONSERVATION DISTRICT.

APPROVED: *John D. Moran* DATE 9-16-77
HOWARD S.C.D.

CERTIFICATION BY DEVELOPER

"I CERTIFY THAT ALL DEVELOPMENT AND/OR CONSTRUCTION WILL BE DONE ACCORDING TO THIS PLAN OF DEVELOPMENT AND PLAN FOR EROSION AND SEDIMENT CONTROL, AND I ALSO AUTHORIZE PERIODIC ON-SITE INSPECTION BY THE HOWARD SOIL CONSERVATION DISTRICT OR THEIR AUTHORIZED AGENTS, AS ARE DEEMED NECESSARY."

Signature: *James T. Ramsey* DATE 6-28-77
EXXON CO. U.S.A.

CERTIFICATION BY THE PROFESSIONAL ENGINEER

"I CERTIFY THAT THIS PLAN FOR EROSION AND SEDIMENT CONTROL REPRESENTS A PRACTICAL AND WORKABLE PLAN BASED ON MY PERSONAL KNOWLEDGE OF THE SITE CONDITIONS AND THAT IT WAS PREPARED IN ACCORDANCE WITH THE REQUIREMENTS OF THE HOWARD SOIL CONSERVATION DISTRICT."



Signature: *Robert Bevell* DATE 6-21-77
6707 Whiteside Rd
P.O. Box 71207
ADDRESS

APPROVED: FOR PUBLIC WATER AND PUBLIC SEWERAGE SYSTEMS: HOWARD COUNTY HEALTH DEPT.

Signature: *James M. Sanders* DATE 10-2-77
COUNTY HEALTH OFFICER

APPROVED: HOWARD COUNTY OFFICE OF PLANNING & ZONING

Signature: *John P. Blawie* DATE 10/6/77
PLANNING DIRECTOR
Signature: *William J. Johnson* DATE 10-7-77
CHIEF, DIV. OF LAND DEVELOPMENT

APPROVED: FOR PUBLIC WATER, PUBLIC SEWERAGE AND STORM DRAINAGE SYS-TEMS, AND ROADS: HOWARD COUNTY DEPARTMENT OF PUBLIC WORKS.

Signature: *W. J. Pearson* DATE 9-28-77
DIRECTOR OF PUBLIC WORKS

Signature: *W. J. Pearson* DATE 9-28-77
CHIEF, DIV. OF HIGHWAYS

THIS BLUEPRINT IS LOANED TO YOU AND MUST BE RETURNED WHEN IT HAS SERVED THE PURPOSE FOR WHICH INTENDED

REVISIONS:
SCALE REV. GRADING PLAN NOTES & DIMENSIONS REVISED DRAINAGE

5-3-77
6-1-77
6/21/77
8/18/77

REVISIONS:

EXXON COMPANY, U.S.A.
(A DIVISION OF EXXON CORPORATION)
POST OFFICE BOX 1288
BALTIMORE, MARYLAND 21203

DRAINAGE AREA MAP

DRAWN: LORI LIM
CHECKED BY:
APPROVED BY:
SCALE: 1" = 20'

S.E. CORNER
LITTLE PATUXENT PKWY.
& STERRETT PLACE
COLUMBIA, MARYLAND

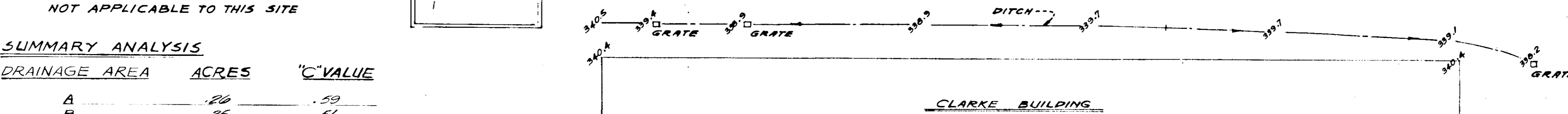
DATE: NOV. 10, 1976
FILE NO.: 1709
SHEET: 5 OF 10
DWG. NO.: SP-5

NOTE:

50 YEAR FLOOD PLAN NOT APPLICABLE TO THIS SITE

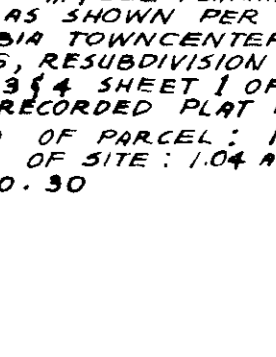
SUMMARY ANALYSIS

DRAINAGE AREA	ACRES	"C" VALUE
A	.26	.59
B	.35	.56
C	.57	.44
D	.07	.95
E	.07	.95

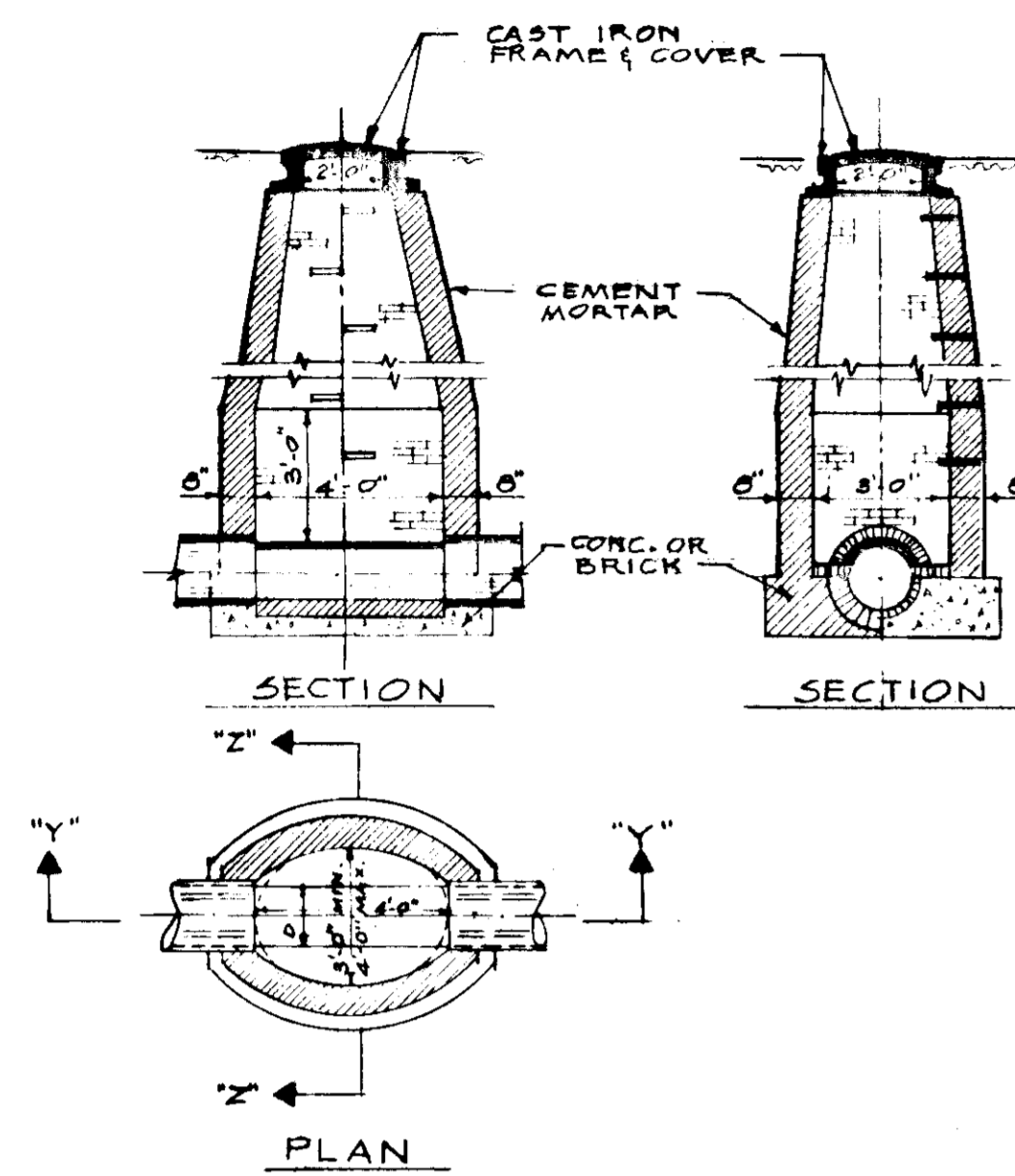


OWNER: EXXON CORPORATION
ADDRESS: POST OFFICE BOX 1288, BALTIMORE, MARYLAND 21203
LOCATION: S.E. CORNER OF LITTLE PATUXENT PKWY. & STERRETT PLACE, COLUMBIA TOWN CENTER, SECTION 7, AREA 6, PARCELS 8, HOWARD COUNTY MAP ELECTION DISTRICT: 5TH ELECT DISTRICT - HOWARD COUNTY TAX MAP ZONING: COMMERCIAL - EMPLOYMENT CENTER "EOP #1" SEE PLANNING BOARD CASE #109 BOUNDARY AS SHOWN PER RECORD PLAN "COLUMBIA TOWNCENTER" SECTION 7, AREA 6, RESUBDIVISION OF SECTION 7, AREAS 3 & 4, SHEET 1 OF 1, DATED APRIL 2, 1971, RECORDED PLAT BOOK 21, FOLIO 56 TOTAL AREA OF PARCEL: 1.04 AC. ± TAX MAP NO. 50

APPROVED
PLANNING BOARD
OF HOWARD COUNTY
DATE 8-31-77



SDP-77-91c

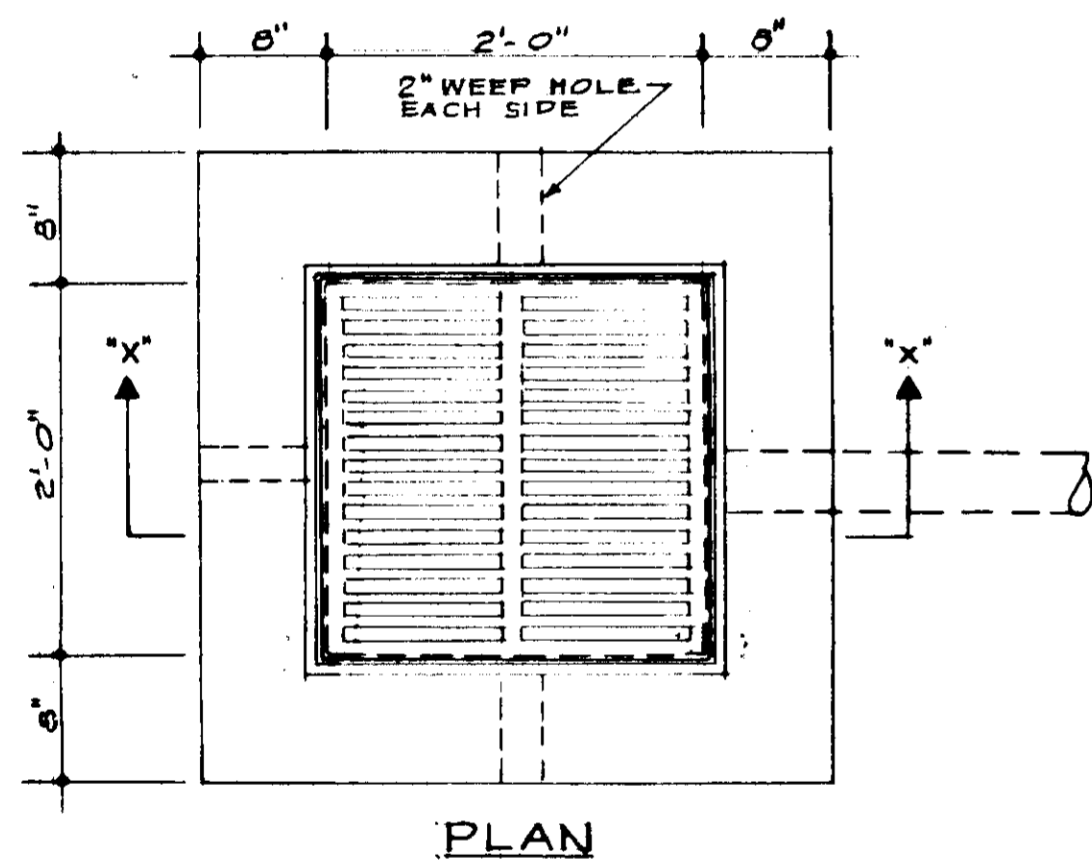


STANDARD MANHOLE

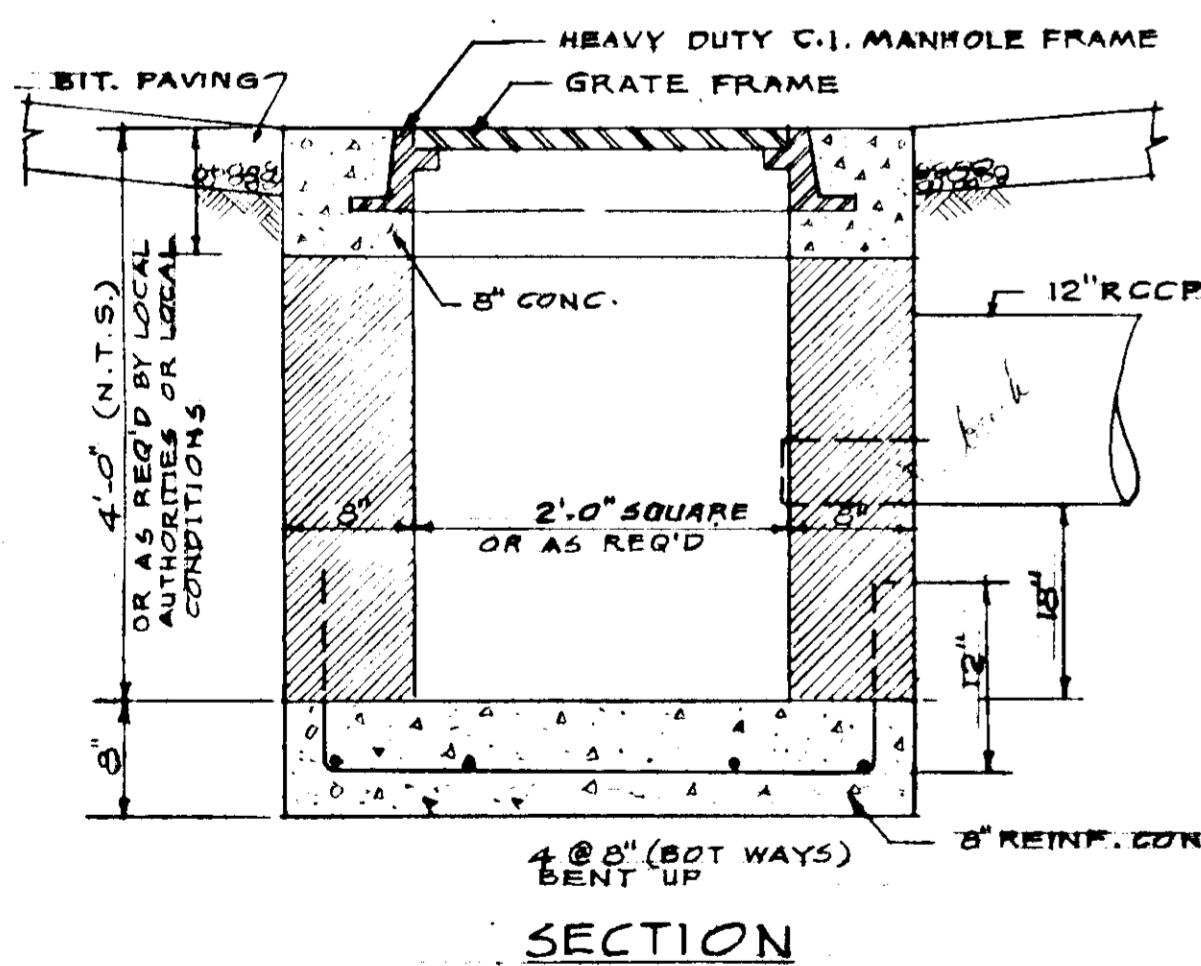
MANHOLE WALL THICKNESS
 8" TO DEPTH OF 12'-0"
 12" BELOW DEPTH OF 12'-0"
 TO 24'-0"

MANHOLE BASE THICKNESS
 8" WALL 12" BASE
 12" WALL 15" BASE

BENCH HEIGHT ABOVE OUTGOING
 PIPE INVERT
 STORM WATER 0.50
 SANITARY 0.30

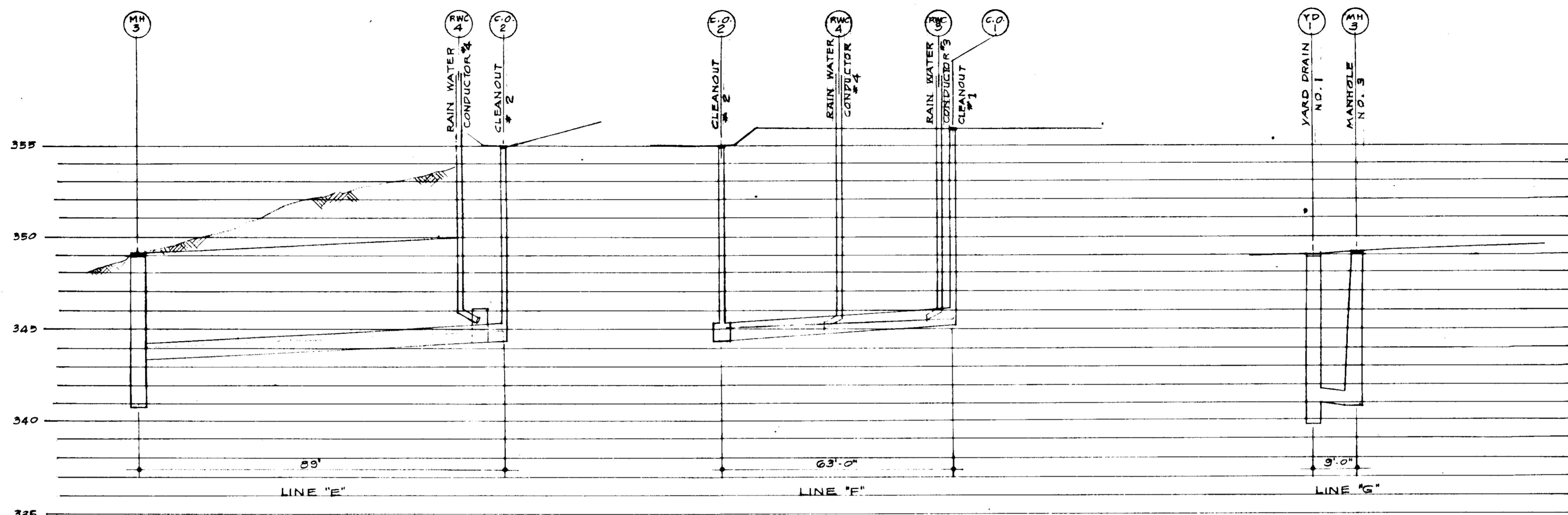


PLAN



SECTION

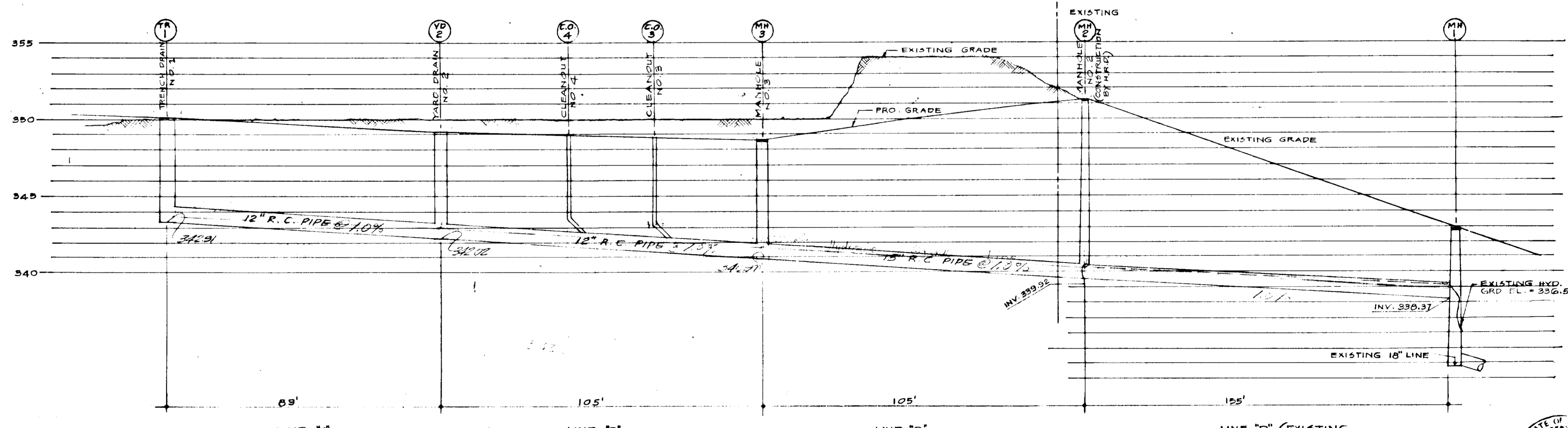
TYPICAL YARD DRAIN
 1" = 1'-0"



MANHOLE WALL THICKNESS
 8" TO DEPTH OF 12'-0"
 12" BELOW DEPTH OF 12'-0"
 TO 24'-0"

MANHOLE BASE THICKNESS
 8" WALL 12" BASE
 12" WALL 15" BASE

BENCH HEIGHT ABOVE OUTGOING
 PIPE INVERT
 STORM WATER 0.50
 SANITARY 0.30



EXTERIOR STORM LINES
 1" = 20'-0"

NOTES:
 1. TRENCH COMPACTION, PIPE BEDDING TO CONFORM TO HOWARD COUNTY ROAD CODE WITHIN R.O.W. OF STERRETT PLACE.
 2. NO DRAINAGE ESTIMENTS EXIST WITHIN PROPERTY LINES.

M.H.-1
 EXISTING M.H. IN TEN MILLS ROAD (STERRETT PLACE)
 INVERT ELEV. 333.75
 HYD GRADE ELEV. 336.50
 TAKEN FROM COLUMBIA PLAN FOR TOWN CENTER SECT. 7 AREA 1 & 4 "PARKING LOT AND COLUMBIA INN"

APPROVED
 PLANNING BOARD
 OF HOWARD COUNTY
 DATE 8-31-77



THIS BLUEPRINT IS LOANED TO YOU AND MUST BE RETURNED WHEN IT HAS SERVED THE PURPOSE FOR WHICH INTENDED

REVISIONS:
 CHANGE 10" R.C. PIPE TO 12" R.C. PIPE 7-11-77

REVISIONS:

EXXON COMPANY, U.S.A.
 (A DIVISION OF EXXON CORPORATION)
 POST OFFICE BOX 1288
 BALTIMORE, MARYLAND 21203

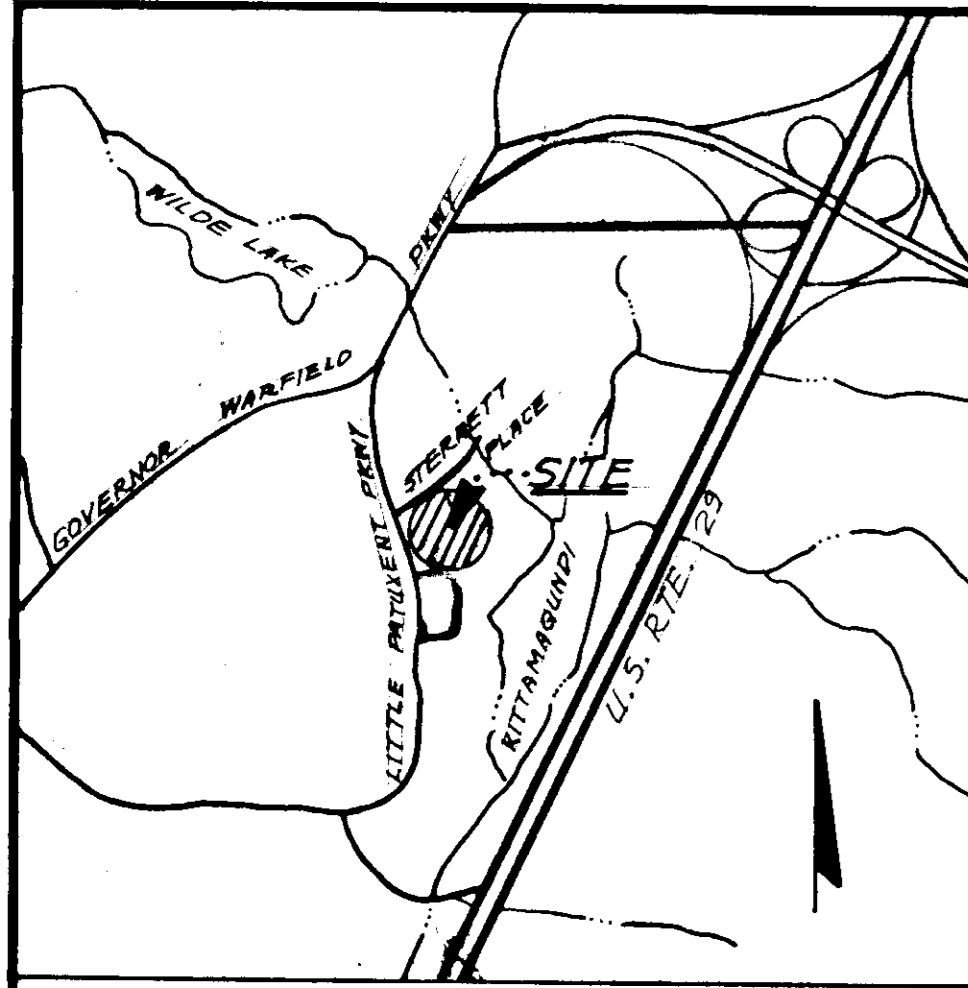
DRAINAGE PROFILES

DRAWN BY: LORI LIM
 CHECKED BY:
 APPROVED BY:
 SCALE: AS NOTED

S.E. CORNER
 LITTLE PATUXENT PKWY.
 & STERRETT PLACE
 COLUMBIA, MARYLAND

DATE: DEC. 9, 1976
 FILE NO.: 7709
 SHEET NO.: 6 OF 10
 DWG. NO.: SP-6

SDP-77-91c



LOCATION PLAN

CALCULATIONS:

SEDIMENT BASIN NO. 1
 REQUIRED STORAGE: $5 \text{ IN } (.71 \text{ A}) / (1/2) = .03 \text{ ACRE-FT.} = 48.4 \text{ C.Y.}$
 STORAGE PROVIDED: 51 C.Y.

SEDIMENT BASIN NO. 2
 REQUIRED STORAGE: $5 \text{ IN } (.72 \text{ A}) / (1/2) = .03 \text{ ACRE-FT.} = 48.4 \text{ C.Y.}$
 STORAGE PROVIDED: 51 C.Y.

GENERAL NOTES:

1. ALL SOIL EROSION AND SEDIMENT CONTROL FACILITIES TO BE CONSTRUCTED IN ACCORDANCE WITH HOWARD SOIL CONSERVATION DISTRICT STANDARDS AND SPECIFICATIONS.

SEDIMENT CONTROL CONSTRUCTION SEQUENCE

1. Install down slope berms and swales.
2. Construct sediment basins, 1st and 2nd.
3. Complete on-site construction.
4. Gravel.
5. Grade entire lot.
6. Install parking areas.
7. Complete all final grading.
8. Call for sediment control inspection 410-5000 X-321.

REVIEWED FOR HOWARD S.C.D. AND MEETS TECHNICAL REQUIREMENTS.

Wm. J. Buehler DATE 7-14-77
 SIGNATURE U.S. SOIL CONSERVATION SERVICE

THIS DEVELOPMENT PLAN IS APPROVED FOR SOIL EROSION & SEDIMENT CONTROL BY THE HOWARD SOIL CONSERVATION DISTRICT.

APPROVED *John D. Mikes* DATE 9-14-77
 HOWARD S.C.D.

CERTIFICATION BY DEVELOPER
 "I CERTIFY THAT ALL DEVELOPMENT AND /OR CONSTRUCTION WILL BE DONE ACCORDING TO THIS PLAN OF DEVELOPMENT AND PLAN FOR EROSION AND SEDIMENT CONTROL, AND I ALSO AUTHORIZE PERIODIC ON-SITE INSPECTION BY THE HOWARD SOIL CONSERVATION DISTRICT OR THEIR AUTHORIZED AGENTS, AS ARE DEEMED NECESSARY."

James T. Lawson 6/23/77
 SIGNATURE, EXXON CO., S.A. DATE

CERTIFICATION BY THE PROFESSIONAL ENGINEER
 "I CERTIFY THAT THIS PLAN FOR EROSION AND SEDIMENT CONTROL PRESENTS A PRACTICAL AND WORKABLE PLAN, BASED ON MY PERSONAL KNOWLEDGE OF THE SITE CONDITIONS AND THAT IT WAS PREPARED IN ACCORDANCE WITH THE REQUIREMENTS OF THE HOWARD SOIL CONSERVATION DISTRICT."

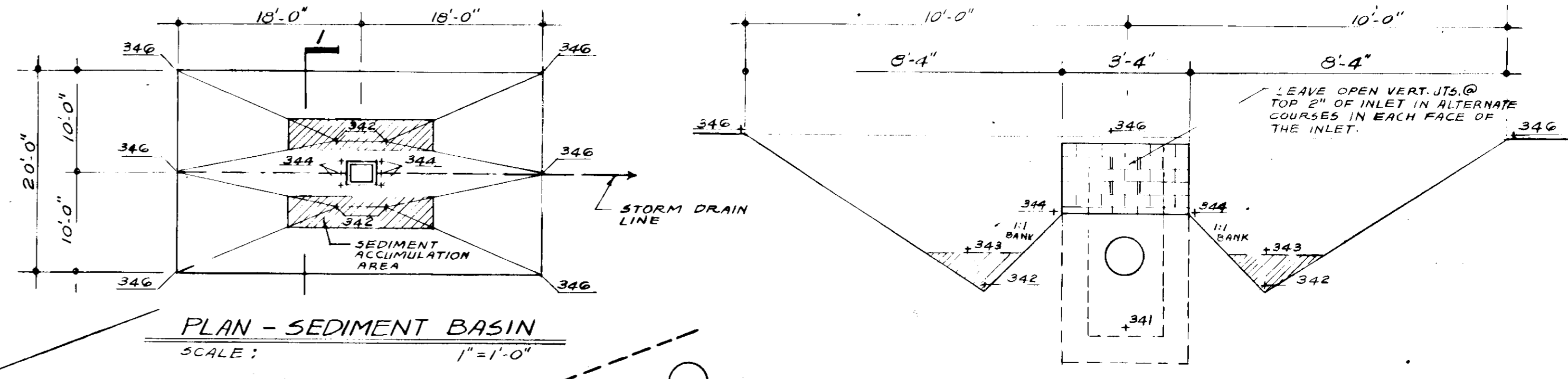
Robert Caswell 6-28-77
 SIGNATURE ADDRESS: 6707 Whitesboro Rd, Baltimore 21207

APPROVED FOR PUBLIC WATER AND PUBLIC SEWERAGE SYSTEMS. HOWARD COUNTY HEALTH DEPT.
James Andrews 10-7-77
 COUNTY HEALTH OFFICER

APPROVED: HOWARD COUNTY OFFICE OF PLANNING & ZONING
John Lawson 10/5/77
 PLANNING DIRECTOR

APPROVED: FOR PUBLIC WATER, PUBLIC SEWERAGE AND STORM DRAINAGE SYSTEMS, AND ROADS. HOWARD COUNTY DEPARTMENT OF PUBLIC WORKS.
PJ Rogers 9-22-77
 DIRECTOR OF PUBLIC WORKS

D.W. Hedland 9/18/77
 CHIEF, BUR. OF HIGHWAYS

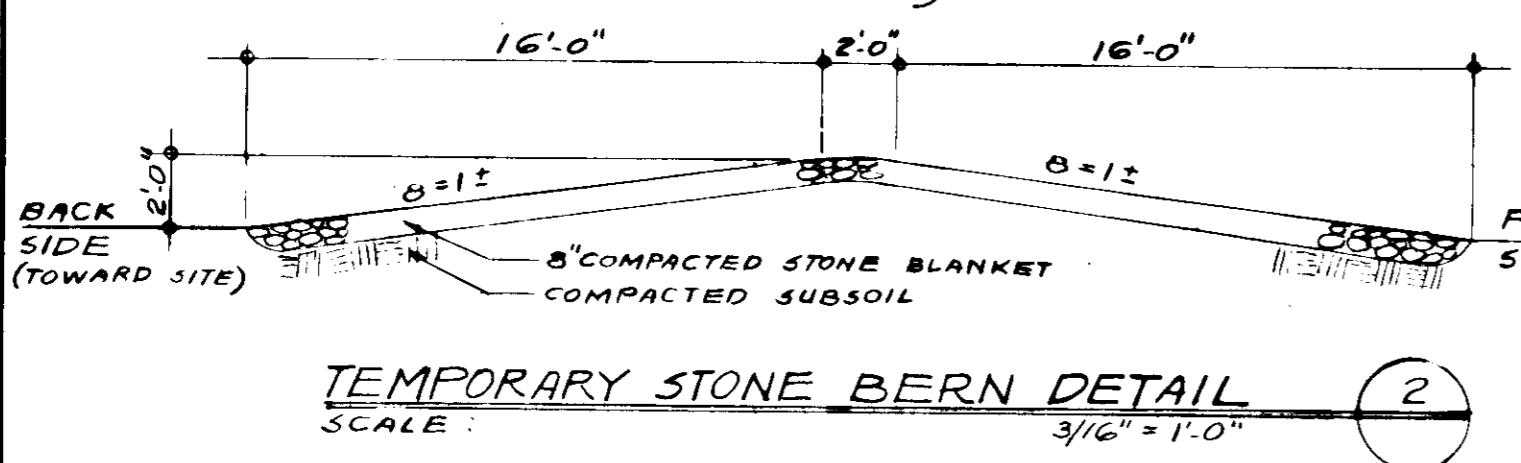
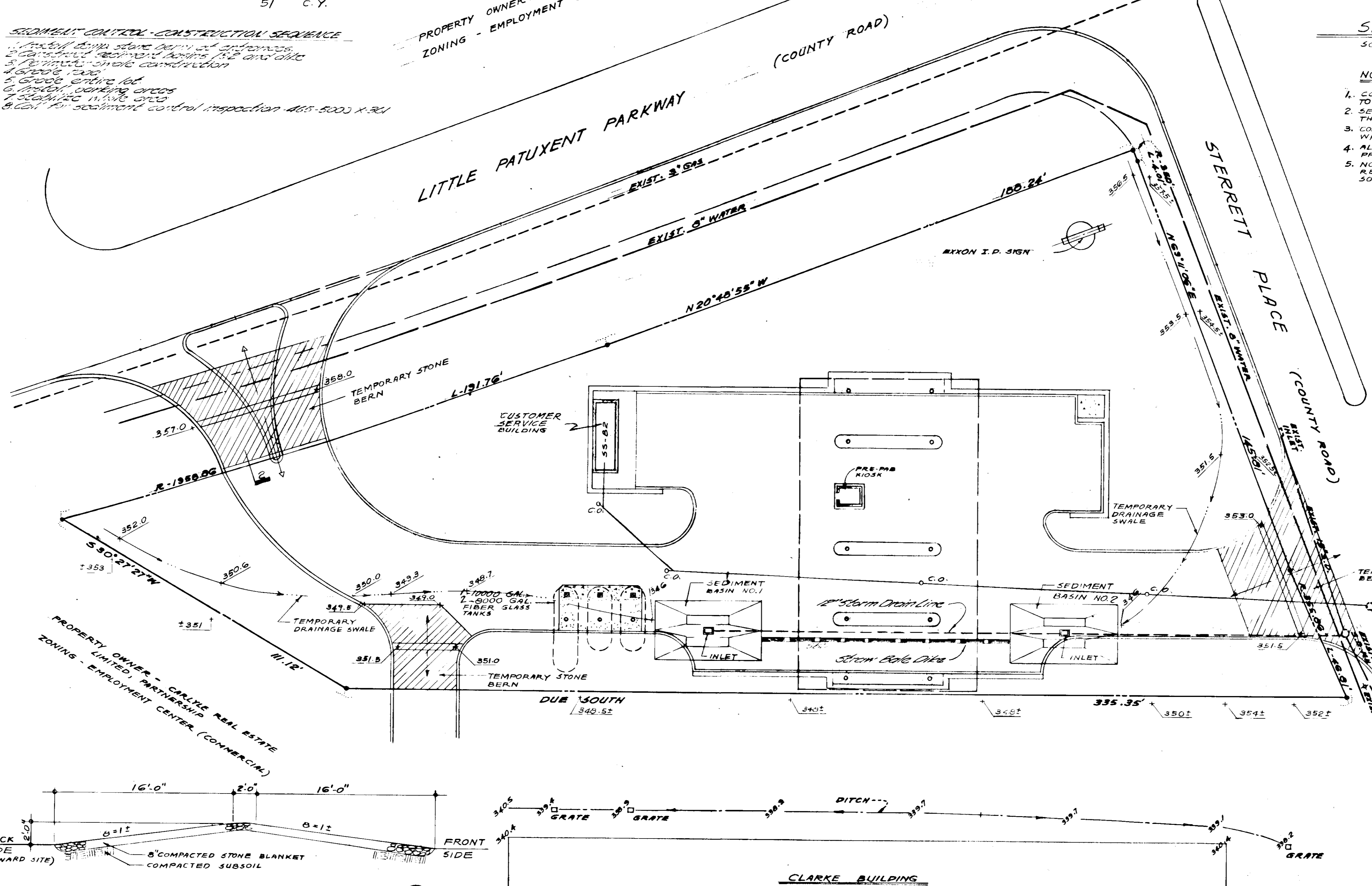


PLAN - SEDIMENT BASIN
 SCALE: 1" = 1'-0"

SEDIMENT BASIN DETAIL
 SCALE: 3/8" = 1'-0"

NOTE:

1. CONTRACTOR SHALL CLEAN OUT SED. BASIN AND RETURN SIDES TO ORIGINAL PROFILES WHENEVER SEDIMENT REACHES EL. 343.
2. SEDIMENT BASIN SHALL BE MAINTAINED TO PROFILES SHOWN THROUGHOUT CONSTRUCTION OPERATIONS.
3. CONTRACTOR SHALL FILL VERT. DRAINAGE SLOTS IN INLET WALLS WITH MORTAR BEFORE FINAL PAVING OPERATIONS.
4. ALL SEDIMENT CONTROLS MUST BE CONSTRUCTED PRIOR TO ANY GRADING.
5. NO TEMPORARY SEDIMENT CONTROL STRUCTURE MAY BE REMOVED OR DESTROYED WITHOUT APPROVAL OF THE HOWARD SOIL CONSERVATION DISTRICT.

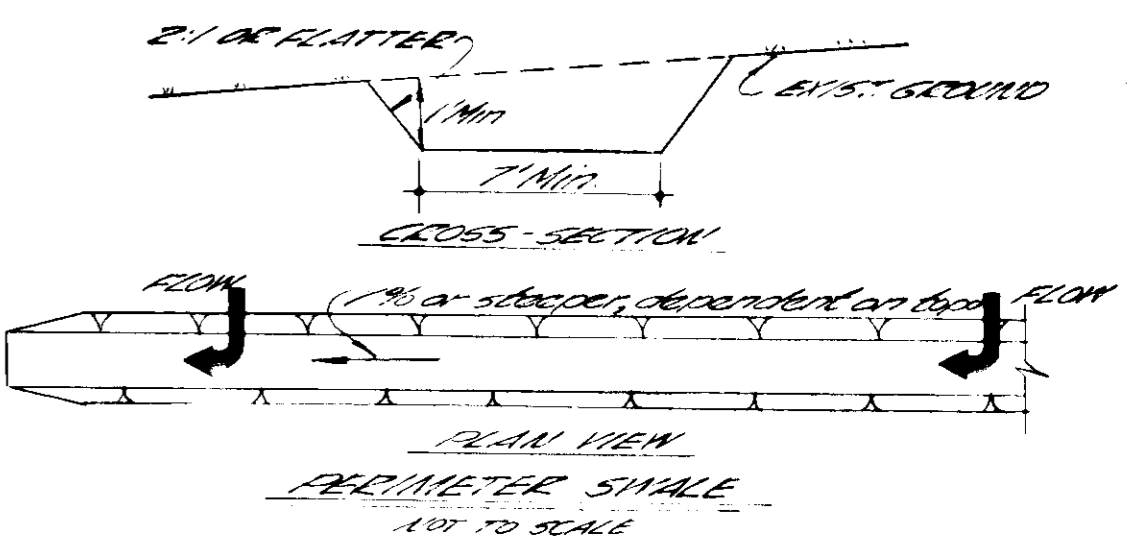


TEMPORARY STONE BERM DETAIL
 SCALE: 3/16" = 1'-0"

NOTE:

1. STONE TO BE TYPE 2 SUBBASE AS SPECIFIED IN THE HOWARD CO. ROAD CONST. MANUAL.
2. STONE BASE SHALL BE REMOVED BY CONTRACTOR BEFORE FINAL PAVING OPERATIONS

PROPERTY OWNER - HOWARD RESEARCH & DEVELOPMENT CORP.
 ZONING - EMPLOYMENT CENTER (COMMERCIAL)

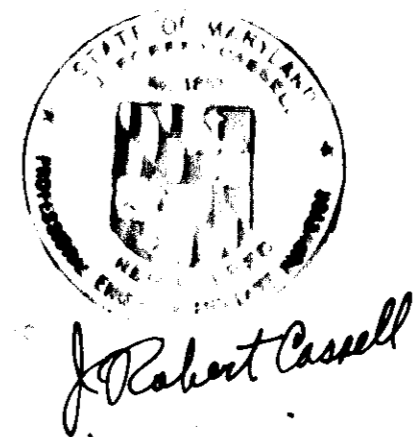


APPROVED PLANNING BOARD OF HOWARD COUNTY
 DATE 8-31-77

NOTE:
 THIS PLAN IS SUPPLEMENTARY TO DWG. SP-1 AND GENERAL ARCHITECTURAL PLANS.

SITE ANALYSIS:
 TOTAL AREA - 1.04 AC.
 DISTURBED AREA - 1.04 AC.
 AREA TO BE PAVED - 0.85 AC.
 AREA TO BE VEGETATED - 0.39 AC.

OWNER: EXXON CORPORATION
 ADDRESS: POST OFFICE BOX 1288, BALTIMORE, MARYLAND 21203
 LOCATION: S.E. CORNER OF LITTLE PATUXENT PKWY. & STERRETT PLACE, COLUMBIA TOWN CENTER, SECTION 7, AREA 6, PARCEL A, HOWARD COUNTY MAP
 ELECTION DISTRICT: 5TH DISTRICT - HOWARD COUNTY TAX MAP
 ZONING: COMMERCIAL - EMPLOYMENT CENTER - F.P.D. #11. SEE PLANNING BOARD CASE #103
 BOUNDARY AS SHOWN PER RECORDED PLAT "COLUMBIA TOWN CENTER SECTION 7, AREA 6, RESUBDIVISION OF SECTION 7, AREA 6, SHEET 1 OF 1, DATED APRIL 2, 1971, RECORDED PLAT BOOK 21, FOLIO 58"
 TOTAL AREA OF PARCEL: 1.04 AC. ±
 TOTAL AREA OF SITE: 1.04 AC. ±
 TAX MAP NO. 30



THIS BLUEPRINT IS LOANED TO YOU AND MUST BE RETURNED WHEN IT HAS SERVED THE PURPOSE FOR WHICH INTENDED

REVISIONS:

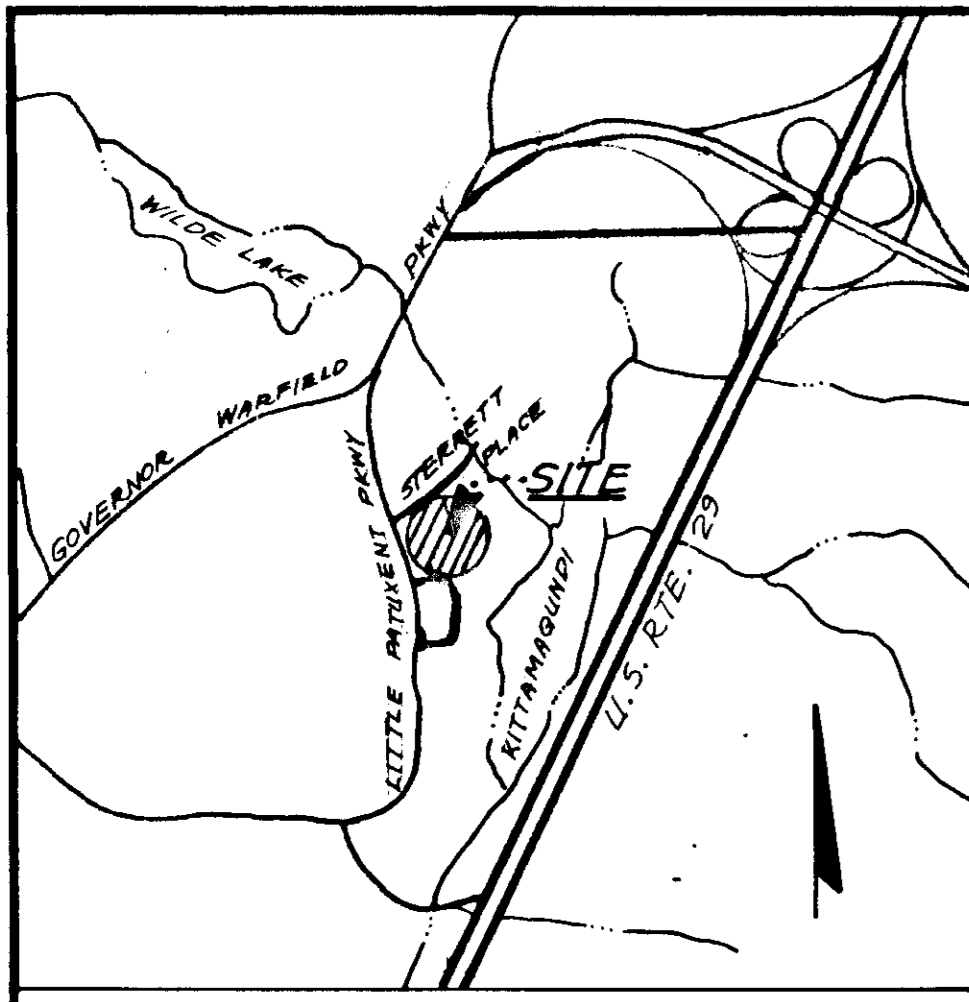
5/3/77	REV
6/21/77	NOTES & DIMENSIONS
9/6/77	REVISED PER

EXXON COMPANY, U.S.A.
 (A DIVISION OF EXXON CORPORATION)
 POST OFFICE BOX 1288
 BALTIMORE, MARYLAND 21203

SEDIMENT CONTROL PLAN

DRAWN BY: LORI LIM
 CHECKED BY:
 APPROVED BY:
 SCALE: 1" = 20'

DATE: NOV. 8, 1976
 FILE NO.: 7709
 SHEET NO.: 7 OF 10
 DWG. NO.: SP 7



LOCATION PLAN

REVIEWED FOR HOWARD S.C.D. AND MEETS TECHNICAL REQUIREMENTS.

Wendell Bunkle DATE 9-14-77
SIGNATURE U.S. SOIL CONSERVATION SERVICE

THIS DEVELOPMENT PLAN IS APPROVED FOR SOIL EROSION & SEDIMENT CONTROL BY THE HOWARD SOIL CONSERVATION DISTRICT.

APPROVED *John D. Myers* DATE 9-16-77
HOWARD S.C.D.

CERTIFICATION BY DEVELOPER
"I CERTIFY THAT ALL DEVELOPMENT AND/OR CONSTRUCTION WILL BE DONE ACCORDING TO THIS PLAN OF DEVELOPMENT AND PLAN FOR EROSION AND SEDIMENT CONTROL, AND I ALSO AUTHORIZE PERIODIC ON-SITE INSPECTION BY THE HOWARD SOIL CONSERVATION DISTRICT OR THEIR AUTHORIZED AGENTS, AS ARE DEEMED NECESSARY."

James T. Ramsey 6/23/77
SIGNATURE, EXXON CO., U.S.A. DATE

CERTIFICATION BY THE PROFESSIONAL ENGINEER
"I CERTIFY THAT THIS PLAN FOR EROSION AND SEDIMENT CONTROL REPRESENTS A PRACTICAL AND WORKABLE PLAN BASED ON MY PERSONAL KNOWLEDGE OF THE SITE CONDITIONS AND THAT IT WAS PREPARED IN ACCORDANCE WITH THE REQUIREMENTS OF THE HOWARD SOIL CONSERVATION DISTRICT."

Robert Casell 6-24-77
SIGNATURE 6707 Whitestone Rd
Beltsville, MD 21207
ADDRESS

APPROVED: FOR PUBLIC WATER AND PUBLIC SEWERAGE SYSTEMS. HOWARD COUNTY HEALTH DEPT.

James Bond 10-7-77
COUNTY HEALTH OFFICER DATE

APPROVED: HOWARD COUNTY OFFICE OF PLANNING & ZONING

William J. Lewis 10/7/77
PLANNING DIRECTOR DATE

APPROVED: FOR PUBLIC WATER, PUBLIC SEWERAGE AND STORM DRAINAGE SYSTEMS, AND ROADS. HOWARD COUNTY DEPARTMENT OF PUBLIC WORKS.

Bill Payne 9-28-77
DIRECTOR OF PUBLIC WORKS DATE

William H. Bell 9/21/77
CHIEF, BUR. OF HIGHWAYS DATE

THIS BLUEPRINT IS LOANED TO YOU AND MUST BE RETURNED WHEN IT HAS SERVED THE PURPOSE FOR WHICH INTENDED

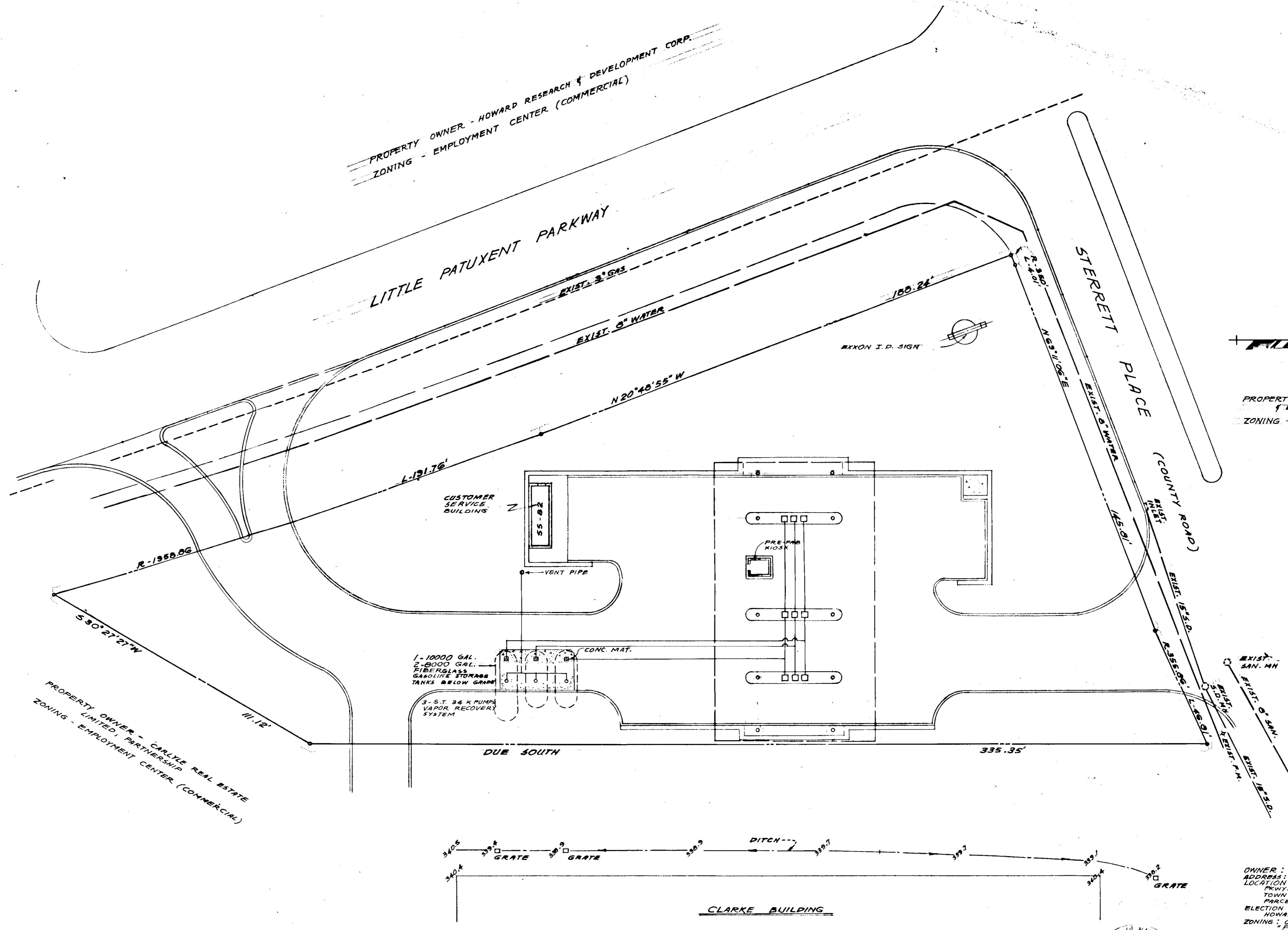
REVISIONS:
6/21/77
5/31/77
NOTES & DIMENSIONS

REVISIONS:

EXXON COMPANY, U.S.A.
(A DIVISION OF EXXON CORPORATION)
POST OFFICE BOX 1288
BALTIMORE, MARYLAND 21203

TANK LAYOUT
SITE PLAN
DRAWN BY: LORI LIM
CHECKED BY:
APPROVED BY:
SCALE: 1" = 20'

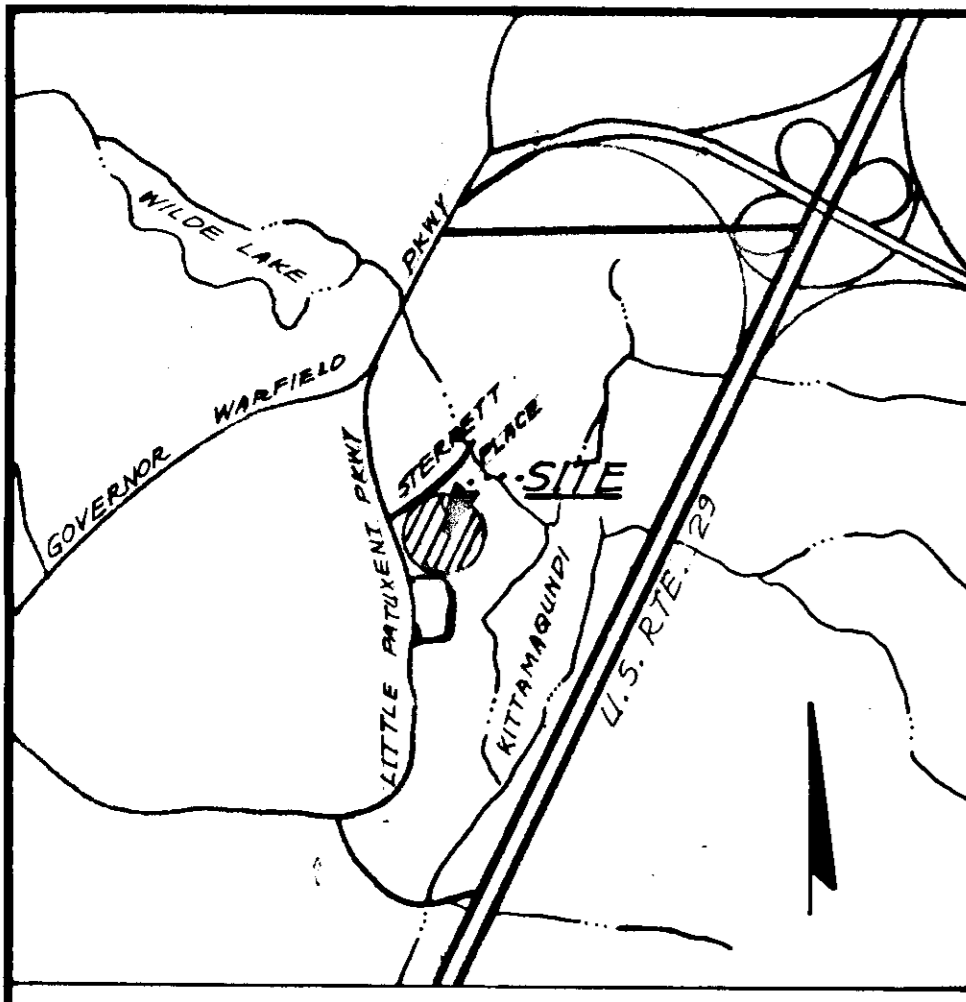
S.E. CORNER
LITTLE PATUXENT PKWY.
& STERRETT PLACE
COLUMBIA, MARYLAND
DATE: NOV. 11, 1976
FILE NO.: 7709
SHEET: 8 OF 11
DWG. NO.: M-1



PROPERTY OWNER - HOWARD RESEARCH & DEVELOPMENT CORP.
ZONING - EMPLOYMENT CENTER (COMMERCIAL)

APPROVED
PLANNING BOARD
OF HOWARD COUNTY
DATE 8-31-77

OWNER: EXXON CORPORATION
ADDRESS: POST OFFICE BOX 1288, BALTIMORE, MARYLAND 21203
LOCATION: S.E. CORNER OF LITTLE PATUXENT PKWY. & STERRETT PLACE, COLUMBIA TOWN CENTER, SECTION 7, AREA 6
PARCEL 9, HOWARD COUNTY MAP
ELECTION DISTRICT: 5TH ELECT DISTRICT - HOWARD COUNTY TAX MAP
ZONING: COMMERCIAL - EMPLOYMENT CENTER
BOUNDARY AS SHOWN PER RECORD PLAT "COLUMBIA TOWNCENTER" SECTION 7, AREA 6, RESUBDIVISION OF SECTION 7, AREA 6, SHEET 1 OF 1, DATED APRIL 2, 1971, RECORDED PLAT BOOK 21, FOLIO 56
TOTAL AREA OF PARCEL: 1.04 AC. ±
TOTAL AREA OF SITE: 1.04 AC. ±
TAX MAP NO. 30



LOCATION PLAN

PROPERTY OWNER - HOWARD RESEARCH & DEVELOPMENT CORP.
 ZONING - EMPLOYMENT CENTER (COMMERCIAL)

REVIEWED FOR HOWARD S.C.D. AND MEETS TECHNICAL REQUIREMENTS.
 Signature: *Christina Bonetta* DATE: 8-16-77
 U.S. SOIL CONSERVATION SERVICE

THIS DEVELOPMENT PLAN IS APPROVED FOR SOIL EROSION & SEDIMENT CONTROL BY THE HOWARD SOIL CONSERVATION DISTRICT.
 APPROVED: *John D. Myers* DATE: 9-16-77
 HOWARD S.C.D.

CERTIFICATION BY DEVELOPER
 "I CERTIFY THAT ALL DEVELOPMENT AND/OR CONSTRUCTION WILL BE DONE ACCORDING TO THIS PLAN OF DEVELOPMENT AND PLAN FOR EROSION AND SEDIMENT CONTROL, AND I ALSO AUTHORIZE PERIODIC ON-SITE INSPECTION BY THE HOWARD SOIL CONSERVATION DISTRICT OR THEIR AUTHORIZED AGENTS, AS ARE DEEMED NECESSARY."
 Signature: *James T. Ramsey* DATE: 6/23/77
 EXXON CO. U.S.A.

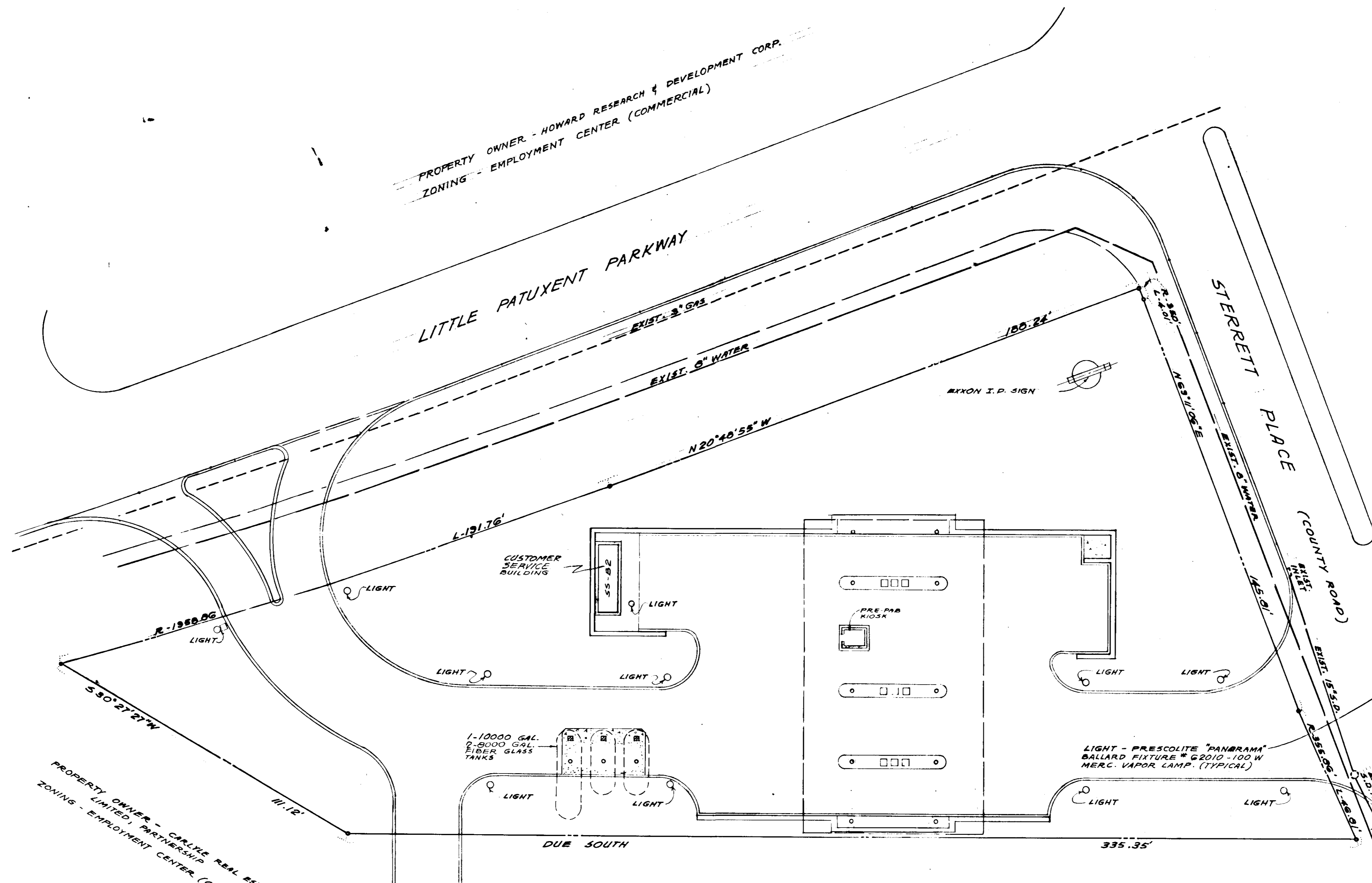
CERTIFICATION BY THE PROFESSIONAL ENGINEER
 "I CERTIFY THAT THIS PLAN FOR EROSION AND SEDIMENT CONTROL REPRESENTS A PRACTICAL AND WORKABLE PLAN BASED ON MY PERSONAL KNOWLEDGE OF THE SITE CONDITIONS AND THAT IT WAS PREPARED IN ACCORDANCE WITH THE REQUIREMENTS OF THE HOWARD SOIL CONSERVATION DISTRICT."
 Signature: *J. Robert Casull* DATE: 6-24-77
 6707 Whitestone Rd
 Baltimore, MD 21207

APPROVED: FOR PUBLIC WATER AND PUBLIC SEWERAGE SYSTEMS. HOWARD COUNTY HEALTH DEPT.
 Signature: *James Bond* DATE: 8-9-77
 COUNTY HEALTH OFFICER

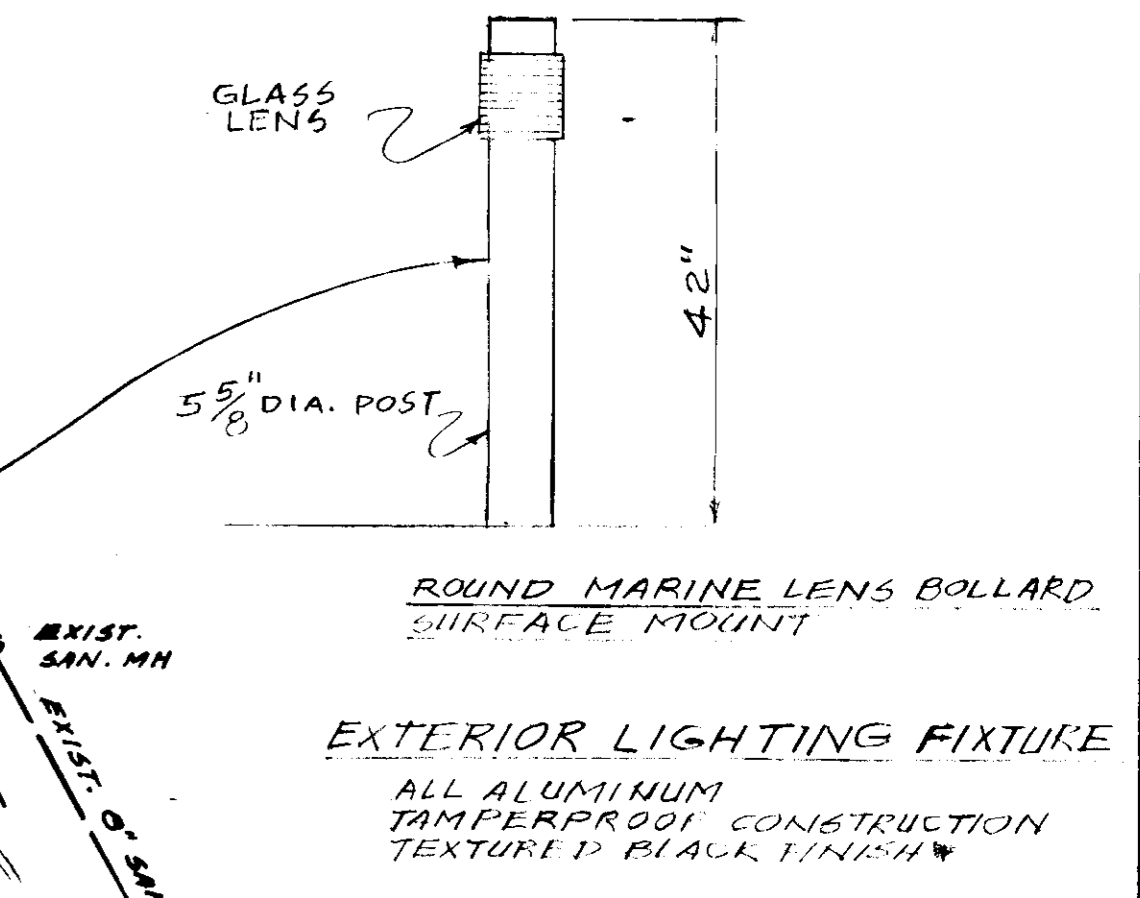
APPROVED: HOWARD COUNTY OFFICE OF PLANNING & ZONING
 Signature: *William L. Brown* DATE: 11-7-77
 PLANNING DIRECTOR

APPROVED: FOR PUBLIC WATER, PUBLIC SEWERAGE AND STORM DRAINAGE SYSTEMS, AND ROADS. HOWARD COUNTY DEPARTMENT OF PUBLIC WORKS.
 Signature: *Dr. [unclear]* DATE: 9-28-77
 DIRECTOR OF PUBLIC WORKS

Signature: *M. W. [unclear]* DATE: 9/28/77
 CHIEF, BUR. OF HIGHWAYS



PROPERTY OWNER - HOWARD RESEARCH & DEVELOPMENT CORP.
 ZONING - EMPLOYMENT CENTER (COMMERCIAL)



APPROVED
 PLANNING BOARD
 OF HOWARD COUNTY
 DATE: 8-31-77

OWNER: EXXON CORPORATION
 ADDRESS: POST OFFICE BOX 1288, BALTIMORE, MARYLAND 21203
 LOCATION: S.E. CORNER OF LITTLE PATUXENT PKWY & STERRETT PLACE, COLUMBIA TOWN CENTER, SECTION 7, AREA 6, PARCEL A, HOWARD COUNTY MAP
 ELECTION DISTRICT: 5TH ELECT. DISTRICT - HOWARD COUNTY TAX MAP
 ZONING: COMMERCIAL - EMPLOYMENT CENTER
 BOUNDARY AS SHOWN PER RECORD PLAT "COLUMBIA TOWNCENTER SECTION 7, AREA 6, RESUBDIVISION OF SECTION 7, AREAS 3 & 4, SHEET 1 OF 2, DATED APRIL 2, 1971, RECORDED PLAT BOOK 21, FOLIO 56"
 TOTAL AREA OF PARCEL: 1.04 AC. ±
 TOTAL AREA OF SITE: 1.04 AC. ±
 TAX MAP NO. 30

THIS BLUEPRINT IS LOANED TO YOU AND MUST BE RETURNED WHEN IT HAS SERVED THE PURPOSE FOR WHICH INTENDED

REVISIONS:
 5/3/77
 6/2/77

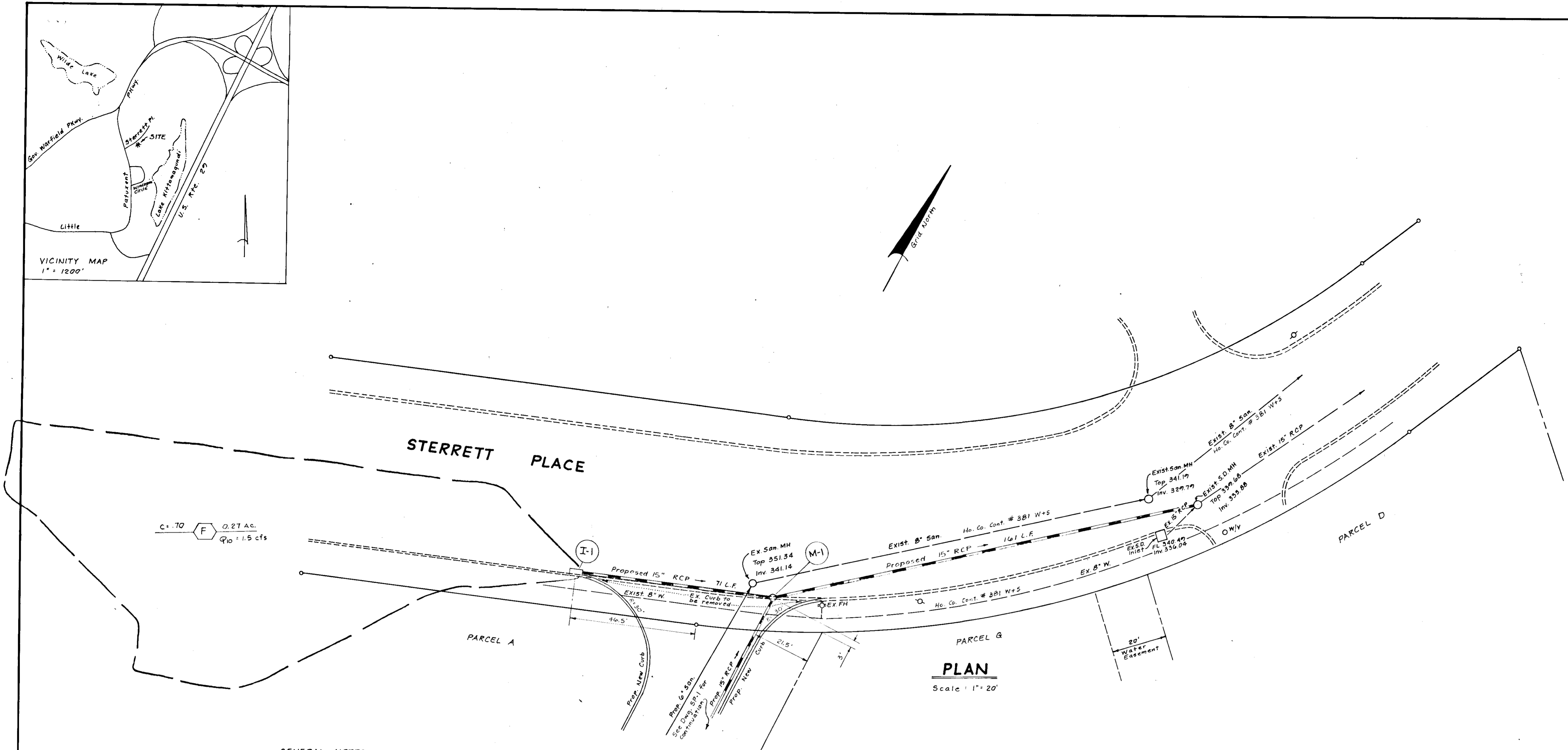
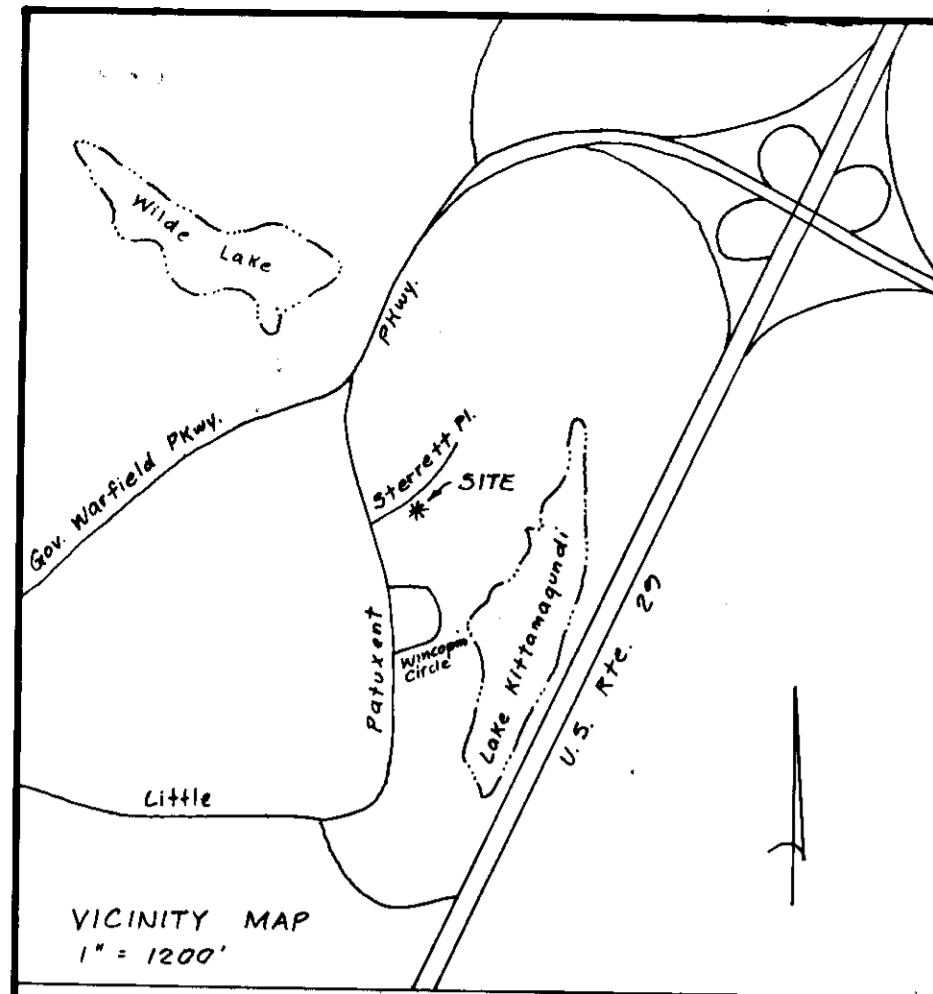
EXXON COMPANY, U.S.A.
 (A DIVISION OF EXXON CORPORATION)
 POST OFFICE BOX 1288
 BALTIMORE, MARYLAND 21203

SITE PLAN - LIGHTING

DRAWN BY: LORI LIM
 CHECKED BY:
 APPROVED BY:
 SCALE: 1" = 20'

S.E. CORNER
 LITTLE PATUXENT PKWY.
 & STERRETT PLACE
 COLUMBIA, MARYLAND

DATE: NOV. 11, 1976
 FILE NO.: 7709
 SHEET NO.: 2 OF 13
 DWG. NO.: E-1

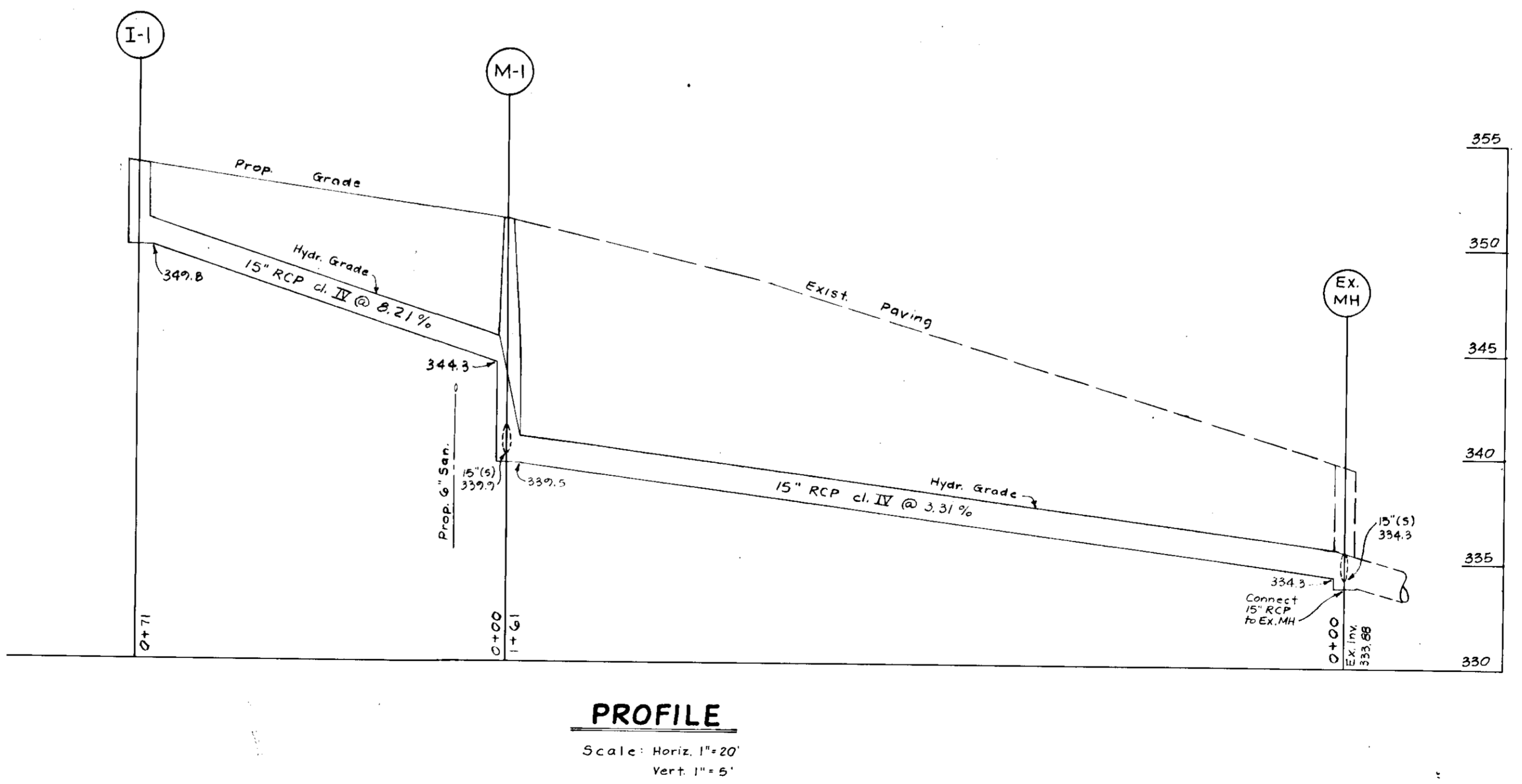


GENERAL NOTES

- Contact "Miss Utility" (550.0100) atleast three (3) working days before beginning work in this area.
- This supplementary plan shows proposed storm drain construction in Sterrett Place shown as existing on previously approved plans. For extension of on-site storm drain system see Sheets Nos. SP-1, SP-5 and SP-6 of drawings approved by Howard County Dept. of Public Works, Aug. 1977.

PREPARED BY:
RBA
Wilds Lake Village Green
Suite 207
Columbia, Md. 21044

Harlan E. Veendam
Harlan E. Veendam



STRUCTURE		SCHEDULE				
No.	Type	Location	Inv. In	Inv. Out	Top Elev.	Remarks
I-1	6" Comb. Man. H. Co.	See plan	-	349.80	Top of grade @ line 353.70	Dwg. # D-08 Pg. 123
M-1	15" Man. H. Co.	See plan	344.30	339.50	351.2	Dwg. # D-103 Pg. 123

APPROVED: Howard County Office of Planning
James M. Smith 2-21-79
 Planning Director
 APPROVED: *John F. Neman* 2/15/79
 Director of Public Works
 APPROVED: *James E. Light* 2-25-79
 Chief, Bureau of Engineering

APPROVED
 DIVISION OF LAND DEVELOPMENT
 HOWARD COUNTY, MARYLAND
 DATE: 1-30-79
AWM

Revisions:

Revisions:

EXXON COMPANY, U.S.A.
 (A DIVISION OF EXXON CORPORATION)
 POST OFFICE BOX 1288
 BALTIMORE, MARYLAND 21203

SUPPLEMENTARY PLAN FOR STORM DRAINAGE

Drawn By: MK
 Checked By: PV
 Approved By:
 Scale: As Shown

S.E. CORNER T.C., 7/6, PARCEL 'A' LITTLE PATUXENT PARKWAY & STERRETT PLACE COLUMBIA, MARYLAND

Ho. Co., Md., S.E.D.

Date: 1-5-79
 File No: 7709
 Sheet No. 10 of 10
 Dwg. No.