

SURVEYOR'S CERTIFICATION
I hereby certify that the information contained hereon is the same as shown on previously approved S.D.P. 76-340, with the following exception:
1. Certain End Units shown thusly: * within Bldgs. No. 4, 5, 10, 11 & 12
2. Tabulation of affected Elements:

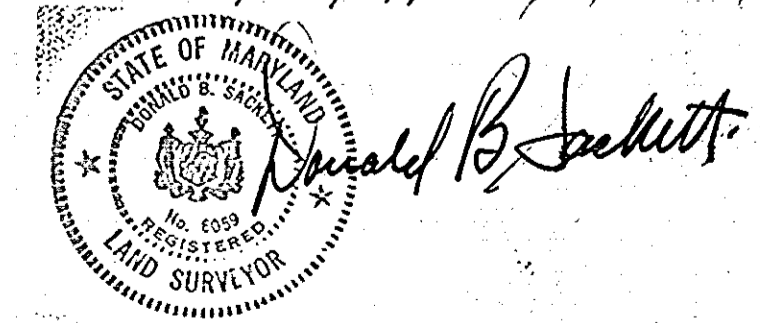
BLDG.	NO. OF UNITS	AREA
4	(2) TWU	1200 P
5	(2) TWU	2100 P
10	(1) ONE	400 P
11	(2) TWU	1200 P
12	(3) TWU	13200 P
TOTAL (9) NINE		4,500 P

SITE ANALYSIS

1. Zone: New Town (Apartment Land Use)
2. Area of Parcels E-1 thru E-5: 520,214 sq ft or 11.9425 Acres
3. Maximum Number of Units Permitted: 153
4. Number of Units shown: 150
5. Number of Parking Spaces Required: 300
6. Number of Parking Spaces shown: 305
7. Density: 12.8 Units/Ac.

I further certify that the Sediment Control Measures, as previously approved, will not be affected, since the grading is substantially the same as originally approved.

6/15/77
DATE



NOTE: Topography shown on this plan was taken from plan prepared by Johnson-McCardle-Thompson dated 6-28-73 File No. 3-057-08-8.

APPROVED
PLANNING BOARD
OF HOWARD COUNTY
DATE 6-8-77

APPROVED FOR PUBLIC WATER AND PUBLIC SEWERAGE SYSTEMS, HOWARD COUNTY HEALTH DEPARTMENT
DATE 7-7-77
COUNTY HEALTH OFFICER
APPROVED HOWARD COUNTY OFFICE OF PLANNING & ZONING
DATE 7/13/77
PLANNING DIRECTOR
APPROVED FOR PUBLIC WATER AND PUBLIC SEWERAGE, DRAINAGE SYSTEMS AND PUBLIC ROADS, HOWARD COUNTY DEPARTMENT OF PUBLIC WORKS
DATE 8-3-77
DATE 6/13/77

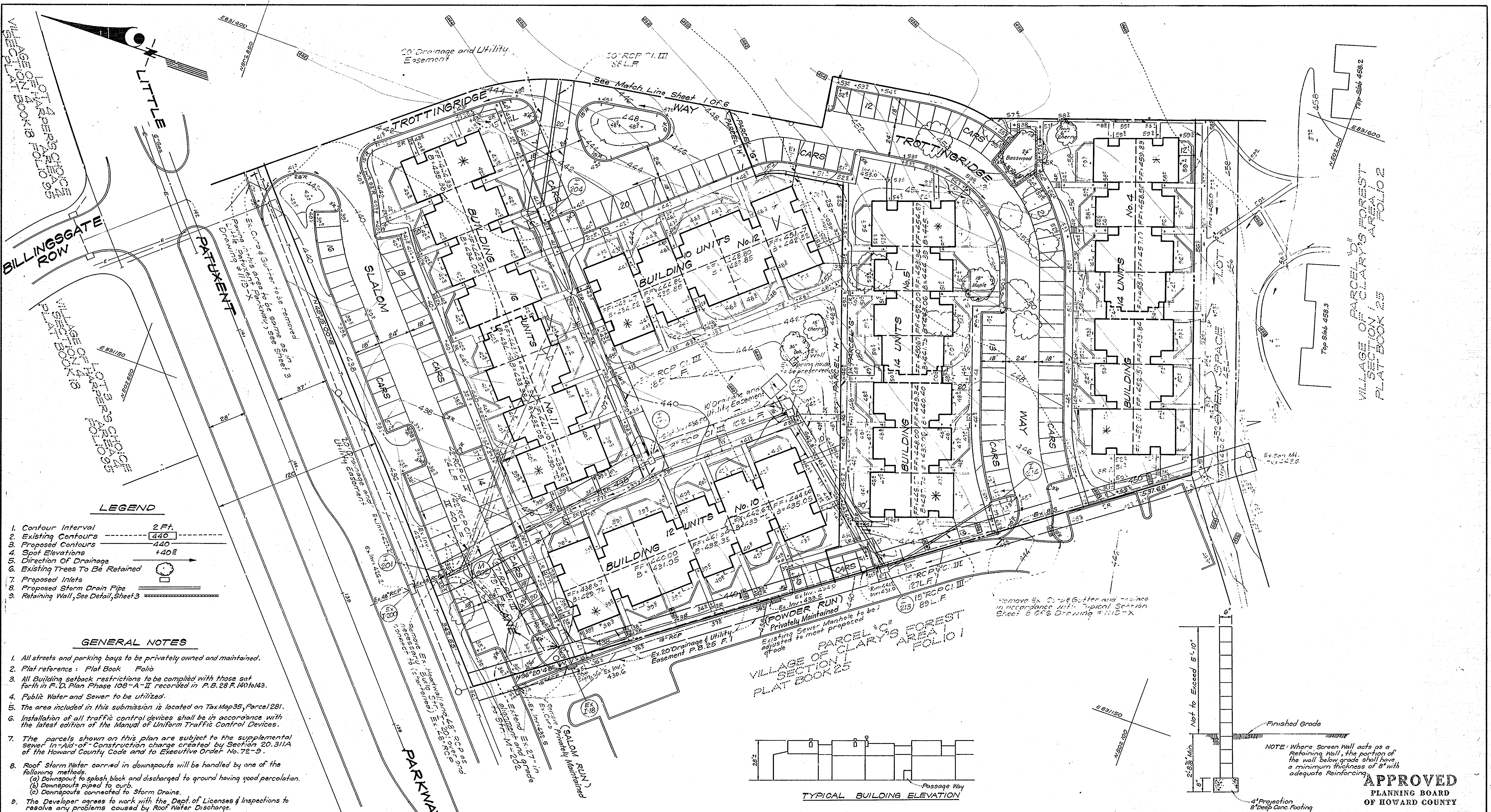
CLARK • FINEPROCK & SACKETT
ENGINEERS • PLANNERS • SURVEYORS
11315 LOCKWOOD DRIVE SILVER SPRING, MARYLAND 20904 (301) 588-3400

SITE DEVELOPMENT PLAN
PARCELS E, F, G, H, I
COLUMBIA
VILLAGE OF CLARY'S FOREST
SECTION 1 AREA 1
5TH ELECTION DISTRICT
HOWARD COUNTY, MARYLAND

FOR: MATHEWS - PHILLIPS, INC.
10750 Columbia Pike, Suite 400
Silver Spring, Md. 20901

DATE Oct., 1975

SCALE 1"=250'
DRAWING 1/2"=22'
JOB NO. 10380
PL. NO. 11187



- LEGEND**
- 1. Contour Interval 2 Ft.
 - 2. Existing Contours - - - - - 440
 - 3. Proposed Contours - - - - - 440
 - 4. Spot Elevations +40±
 - 5. Direction Of Drainage →
 - 6. Existing Trees To Be Retained (Tree symbol)
 - 7. Proposed Inlets (Square symbol)
 - 8. Proposed Storm Drain Pipe (Line with 'S')
 - 9. Retaining Wall, See Detail, Sheet 3 (Wall symbol)

- GENERAL NOTES**
1. All streets and parking bays to be privately owned and maintained.
 2. Plat reference: Plat Book Folio
 3. All Building setback restrictions to be complied with those set forth in F.D. Plan Phase 108-A-II recorded in P.B. 28 F.140 to 143.
 4. Public Water and Sewer to be utilized.
 5. The area included in this submission is located on Tax Map 35, Parcel 281.
 6. Installation of all traffic control devices shall be in accordance with the latest edition of the Manual of Uniform Traffic Control Devices.
 7. The parcels shown on this plan are subject to the supplemental sewer In-Aid-of-Construction charge created by Section 20.311A of the Howard County Code and to Executive Order No. 72-9.
 8. Roof Storm Water carried in downspouts will be handled by one of the following methods:
 - (a) Downspout to splash block and discharged to ground having good percolation.
 - (b) Downspouts piped to curb.
 - (c) Downspouts connected to Storm Drains.
 9. The Developer agrees to work with the Dept. of Licenses & Inspections to resolve any problems caused by Roof Water Discharge.

APPROVED FOR PUBLIC WATER AND PUBLIC SEWERAGE SYSTEMS, HOWARD COUNTY HEALTH DEPARTMENT
 COUNTY HEALTH OFFICER: [Signature] 7-7-77
 DATE: 7-7-77

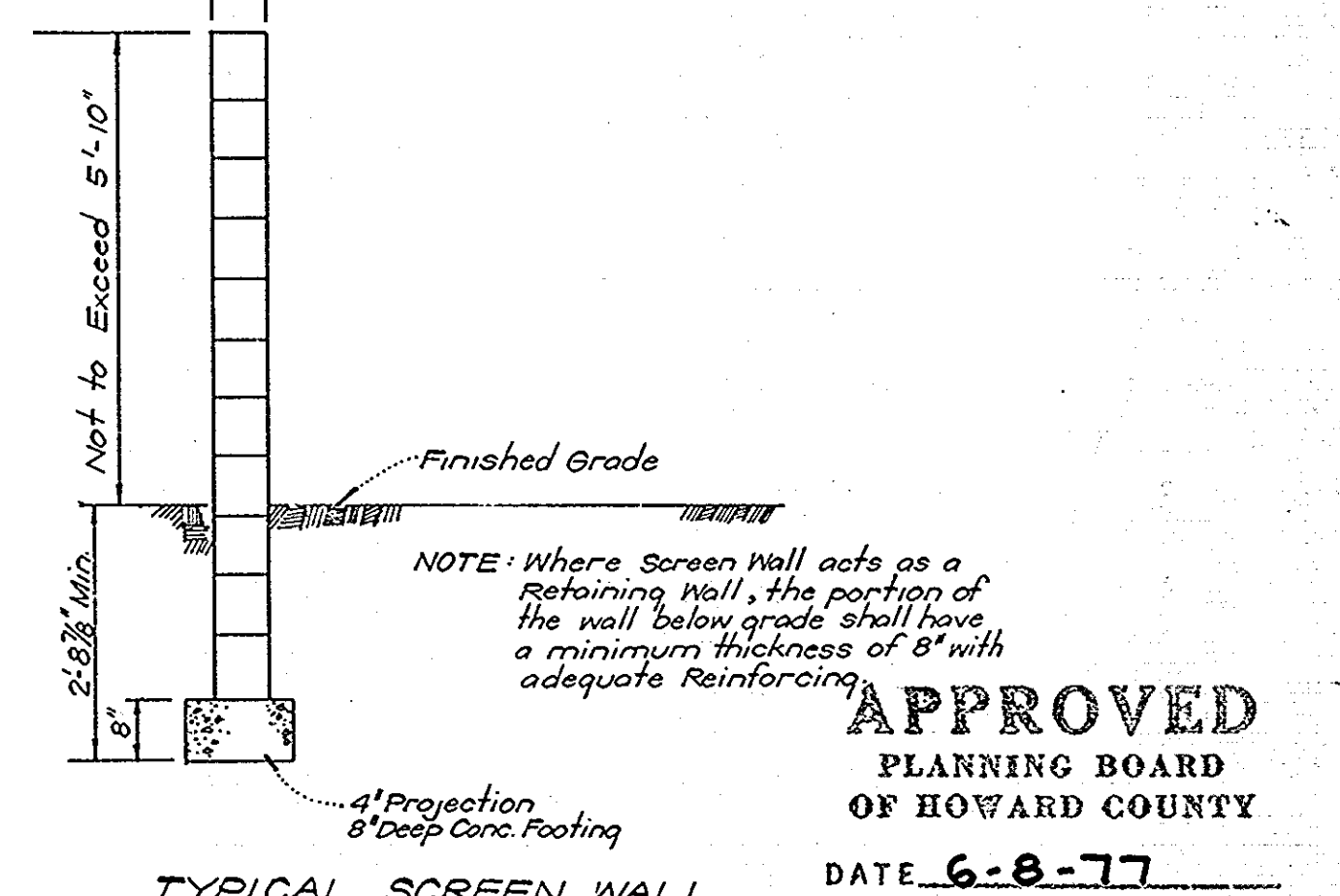
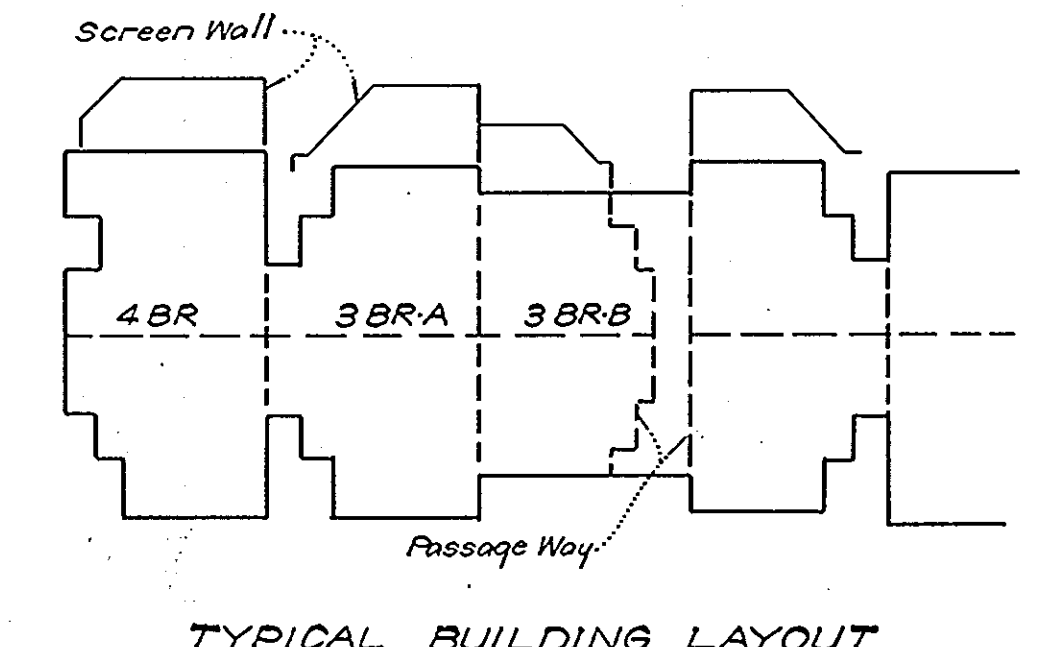
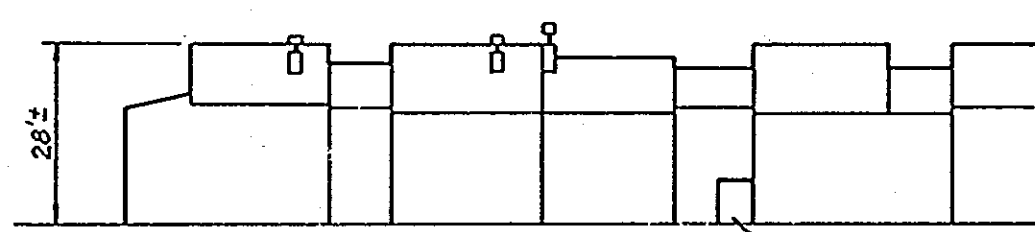
APPROVED HOWARD COUNTY OFFICE OF PLANNING & ZONING
 PLANNING DIRECTOR: [Signature] 7-11-77
 DATE: 7-11-77

APPROVED FOR PUBLIC WATER AND PUBLIC SEWERAGE, STORM DRAINAGE SYSTEMS AND PUBLIC ROADS, HOWARD COUNTY DEPARTMENT OF PUBLIC WORKS
 DIRECTOR: [Signature] 6-29-77
 DATE: 6-29-77

APPROVED FOR PUBLIC WATER AND PUBLIC SEWERAGE, STORM DRAINAGE SYSTEMS AND PUBLIC ROADS, HOWARD COUNTY DEPARTMENT OF PUBLIC WORKS
 CHIEF BUREAU OF HIGHWAYS: [Signature] 6-29-77
 DATE: 6-29-77

PARCEL ANALYSIS

PARCEL	AREA	BLDG. NOS.	NO. OF UNITS	NO. OF PARKING SPACES	BLDG. COVERAGE
	SQ. FT.				SQ. FT. %
"E"	121,152	1,2 & 12	40	81	33,630 27.8
"F"	173,017	8, 9, 10 & 11	44	88	37,373 21.6
"G"	77,402	3 & 4	28	56	23,570 30.5
"H"	128,004	2, 3 & 7	38	80	32,304 25.2
"I"	20,639	0, 4 & 5	—	—	3,950 19.1
TOTAL	520,214	12	150	305	130,827 25.1



APPROVED
 PLANNING BOARD
 OF HOWARD COUNTY
 DATE 6-8-77

CLARK • FINEPROCK & SACKETT
 ENGINEERS • PLANNERS • SURVEYORS
 11315 LOCKWOOD DRIVE SILVER SPRING, MARYLAND 20904 (301) 593-3400

DESIGNED WRM	SITE DEVELOPMENT PLAN PARCELS E, F, G, H & I COLUMBIA VILLAGE OF CLARY'S FOREST SECTION I AREA I 5TH ELECTION DISTRICT HOWARD COUNTY, MARYLAND	SCALE 1"=30'
DRAWN KYC		DRAWING 20F2
CHECKED WRM		JOB NO.
DATE Oct., 1975		FILE NO. 1119-X

FOR: **MATHEWS-PHILLIPS, INC.**
 10750 Columbia Pike, Suite 408
 Silver Spring, Md. 20901

SDP-77-89C