

BLOCK 'A', SECTION TWO
GREATER BALTIMORE
CONSOLIDATE WHOLESALE
FOOD MARKET
PLAT NO 3687

PARCEL 'C-2'

PARCEL 'B'
EX. DISTRIBUTION CENTERS INC
WAREHOUSE

PARCEL 'A'
EX. DISTRIBUTION CENTERS INC
WAREHOUSE

PROP. WAREHOUSE
F.F. ELEV. 240.00

OCEANO AVENUE

ASSATEAGUE DRIVE

APPROVED: FOR PUBLIC WATER AND PUBLIC SEWAGE SYSTEMS;
HOWARD COUNTY HEALTH DEPARTMENT
Joseph B. Brown 8-4-77
DATE

APPROVED: HOWARD COUNTY OFFICE OF PLANNING AND ZONING
John C. Clowry 8/8/77
ACTG. PLANNING DIRECTOR DATE
William W. Walker 7-25-77
CHIEF, OF LAND DEVELOPMENT DATE

APPROVED: FOR PUBLIC WATER, PUBLIC SEWAGE AND STORM
DRAINAGE SYSTEMS AND ROADS; HOWARD COUNTY
DEPARTMENT OF PUBLIC WORKS.
John D. Myers 7-28-77
DATE
A. H. Mehlend 7/28/77
CHIEF, BUREAU OF HIGHWAYS DATE

HOWARD SOIL CONSERVATION DISTRICT
THIS DEVELOPMENT PLAN IS APPROVED FOR SOIL
EROSION & SEDIMENT CONTROL BY THE HOWARD
SOIL CONSERVATION DISTRICT.

APPROVED: *John D. Myers* 2-25-77
HOWARD SOIL CONSERVATION DISTRICT DATE

REVIEWED FOR HOWARD S.C.D. AND MEETS
TECHNICAL REQUIREMENTS.

SIGNATURE: *W. M. Condit* 7-25-77
U.S. SOIL CONSERVATION DISTRICT DATE

SITE DATA

TOTAL AREA OF PARCEL 'C-1'	5.52 AC.±
EXISTING ZONING	M-2
TOTAL FLOOR AREA	113,920 SQ. FT.
TAX MAP NO.	43
AREA OF SUBMITTAL	5.52 AC.±
TOTAL NO OF PARKING SPACES REQUIRED	
4 EMPLOYEES @ 1 SPACE / 2 EMPLOYEES	= (2)
TOTAL NO OF PARKING SPACES PROVIDED EMPLOYEES	= 2
TOTAL NO OF PARKING SPACES PROVIDED VISITORS	= 6
TOTAL NO OF HANDICAPPED SECS PROVIDED	= 1
TOTAL NO SPACES PROVIDED	= 9
BUILDING USE -	DISTRIBUTION WAREHOUSE

LEGEND

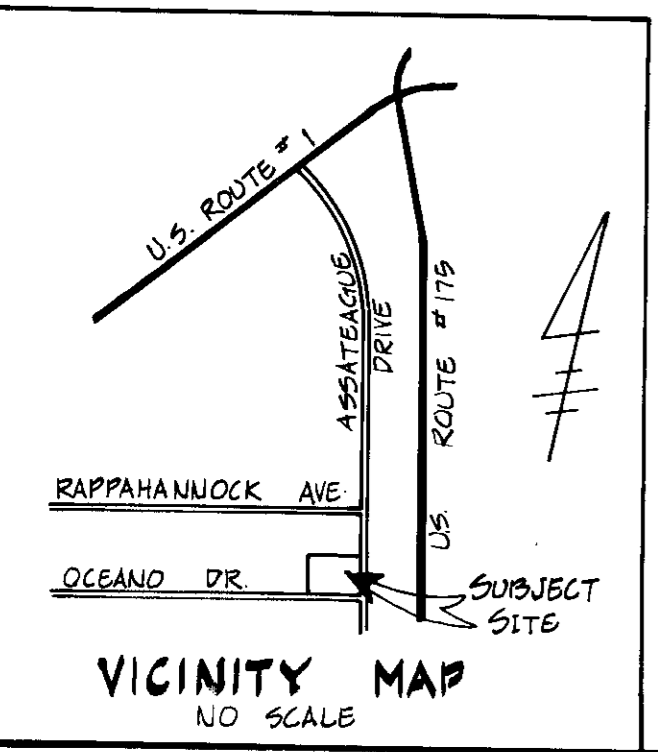
EXISTING CONTOURS	240
PROPOSED CONTOURS	240
	239'

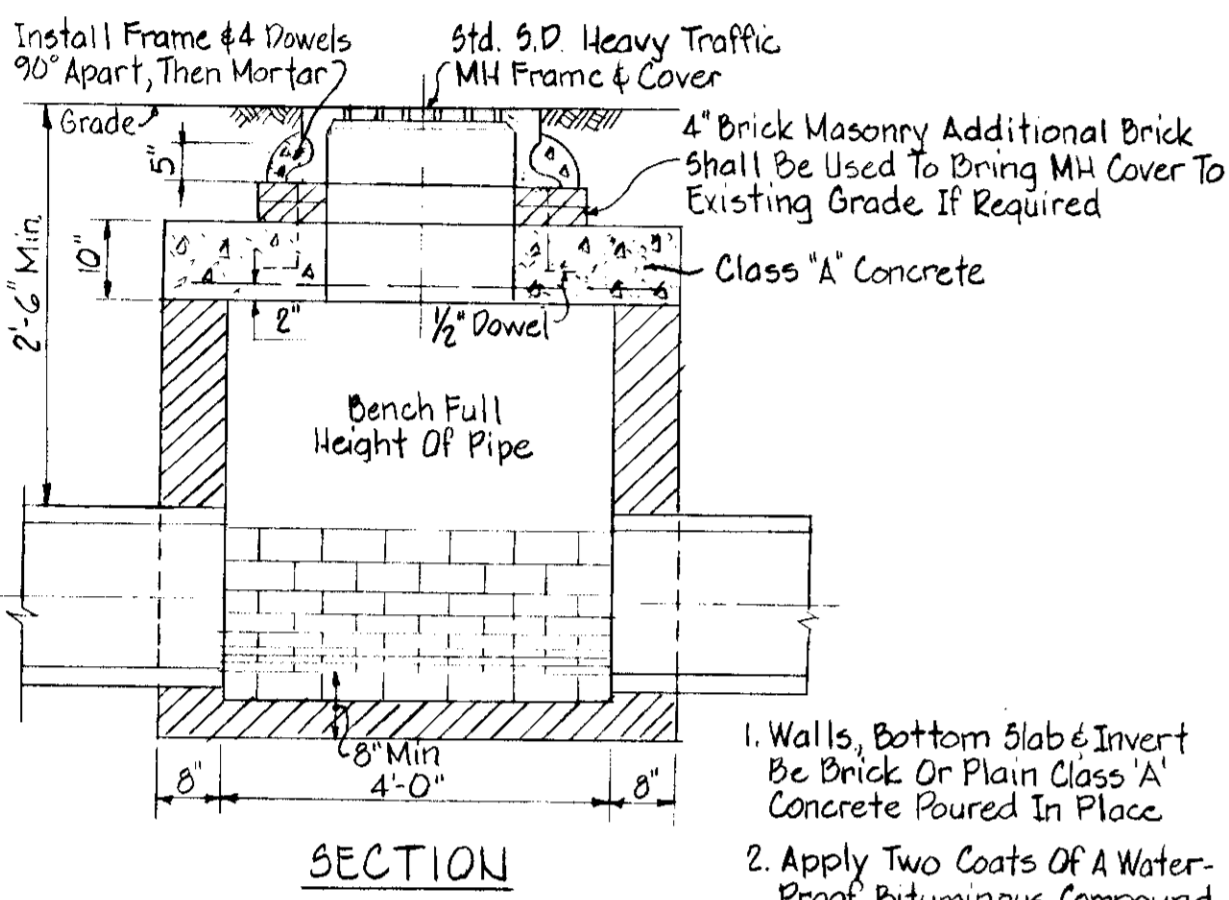
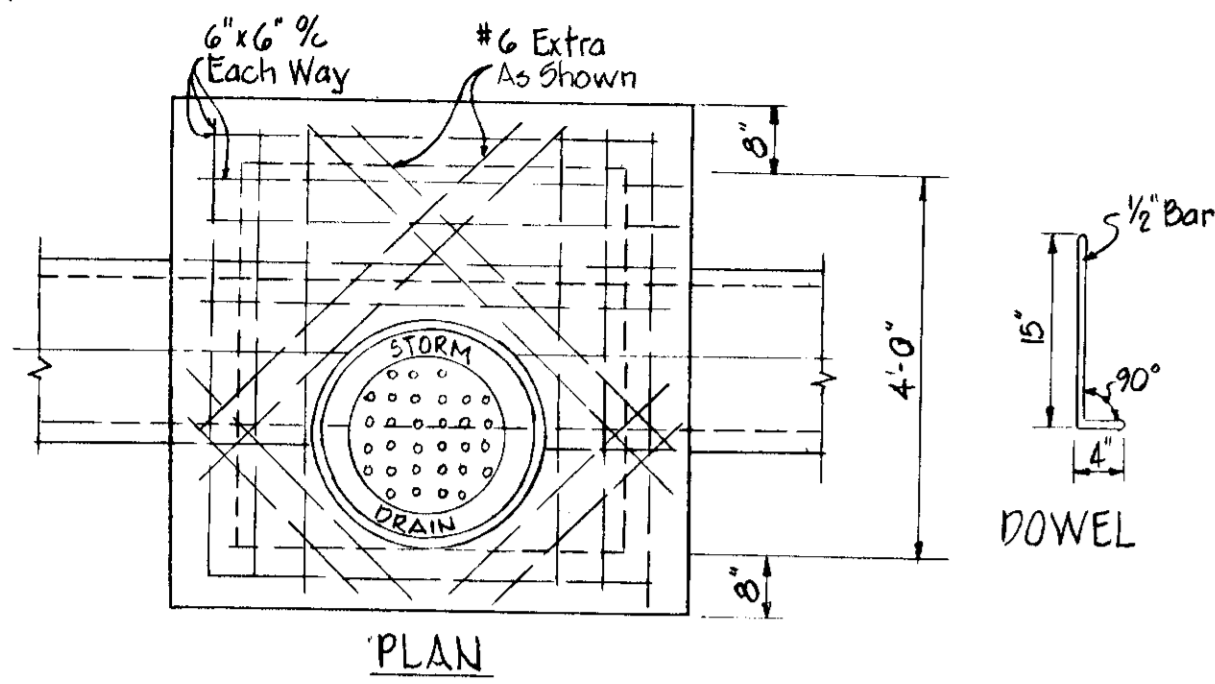
ENGINEER
GEORGE W. STEPHENS, JR.
& ASSOCIATES, INC.
303 ALLEGHENY AVE.
TOWSON, MD. 21204
George W. Stephens, Jr. 8/19/77
REG. NO. 8930

- GENERAL NOTES**
- 1) ALL DISTURBED AREAS SHALL BE STABILIZED WITH PERMANENT SEED & MULCH IN ACCORDANCE WITH THE PLAN APPROVED BY THE HOWARD CO. SOIL CONSERVATION DISTRICT.
 - 2) ALL RAILROAD CONSTRUCTION TO BE DONE IN ACCORDANCE WITH BEO, CAO STANDARDS.
 - 3) MAINTENANCE OF STORM WATER MANAGEMENT FACILITIES SHALL BE THE RESPONSIBILITY OF THE DEVELOPER.
 - 4) FOR ALL DETAILS AND SECTIONS SEE SHEET 2 OF 2.
 - 5) ANY DAMAGE TO COUNTY RIGHT-OF-WAY AND PAVING OF PUBLIC ROADS SHALL BE CORRECTED AT THE DEVELOPER'S EXPENSE.
 - 6) THERE WILL BE NO INSITE RETAIL SALES ALLOWED.
 - 7) FOR DETAILS OF RAMP & SIGN FOR THE HANDICAPPED SEE THE MARYLAND BUILDING CODE FOR THE HANDICAPPED & AGED.

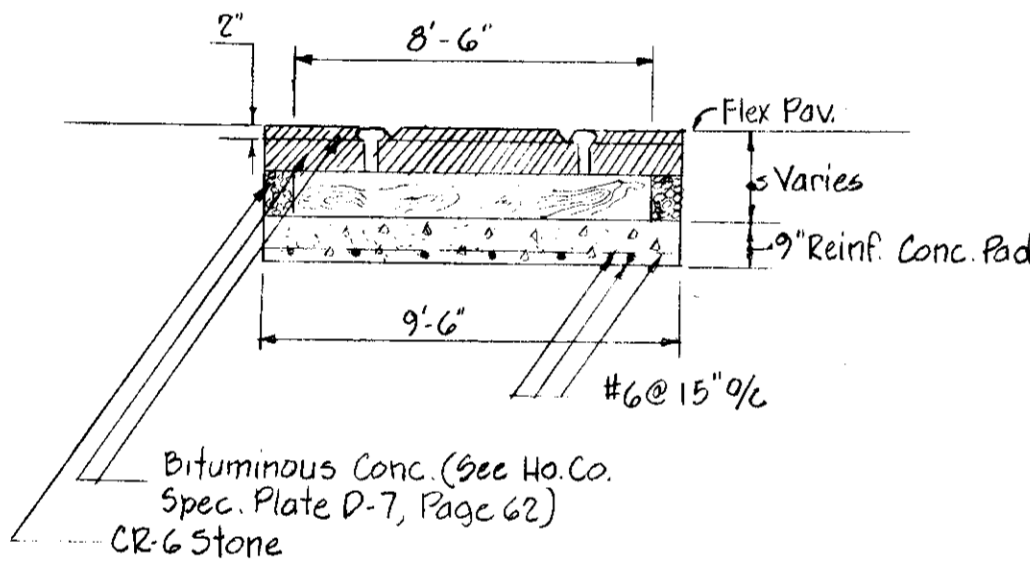
APPROVED
DIVISION OF LAND DEVELOPMENT
HOWARD COUNTY, MARYLAND
DATE 7-13-77
William W. Walker

SITE PLAN
DISTRIBUTION CENTERS INC.
PLAT NO 3687
GREATER BALTIMORE CONSOLIDATED
WHOLESALE FOOD MARKET
BLOCK 'A' SECTION TWO, PARCEL 'C-1'
HOWARD COUNTY, MD. ELECT. DIST. #6
SCALE: 1" = 40'
SHEET 1 OF 3
JUNE 10, 1977
REG. NO. 8930

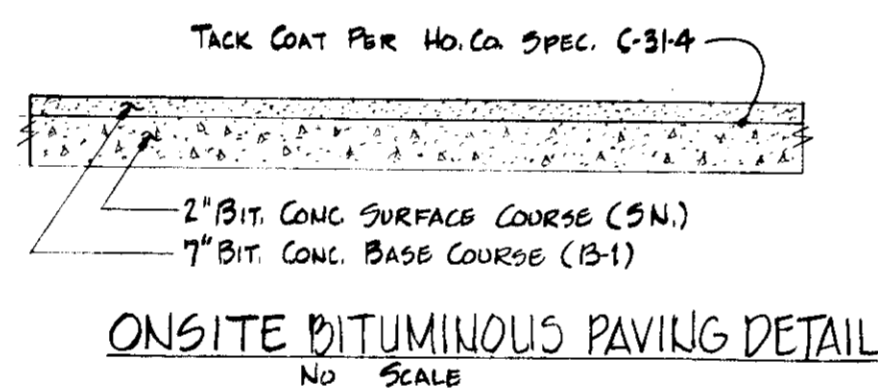




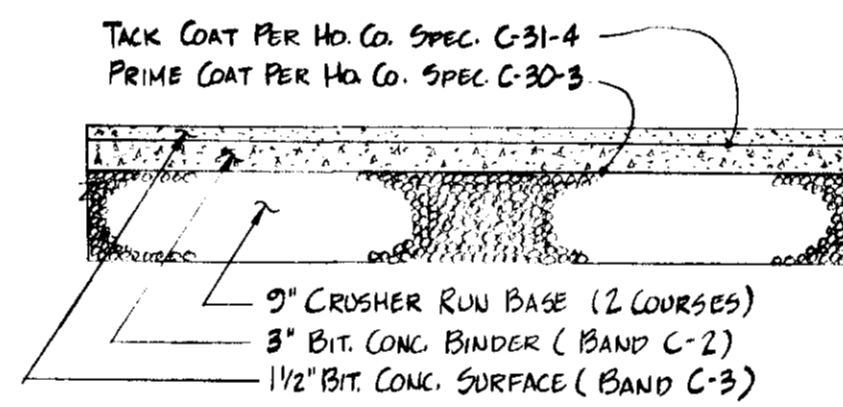
TYPE "B" MANHOLE (SHALLOW)
NO SCALE



TYPICAL R-R GRADE CROSSING
NO SCALE



ONSITE BITUMINOUS PAVING DETAIL
NO SCALE



ENTRANCE PAVING DETAIL
NO SCALE

APPROVED FOR PUBLIC WATER AND PUBLIC SEWAGE SYSTEMS;
HOWARD COUNTY HEALTH DEPARTMENT
John W. Bond 8-4-77
COUNTY HEALTH OFFICER DATE

APPROVED: HOWARD COUNTY OFFICE OF PLANNING AND ZONING
John W. Bond 8/18/77
ACTG. PLANNING DIRECTOR DATE
William Paulman 7-25-77
CHIEF OF LAND DEVELOPMENT DATE

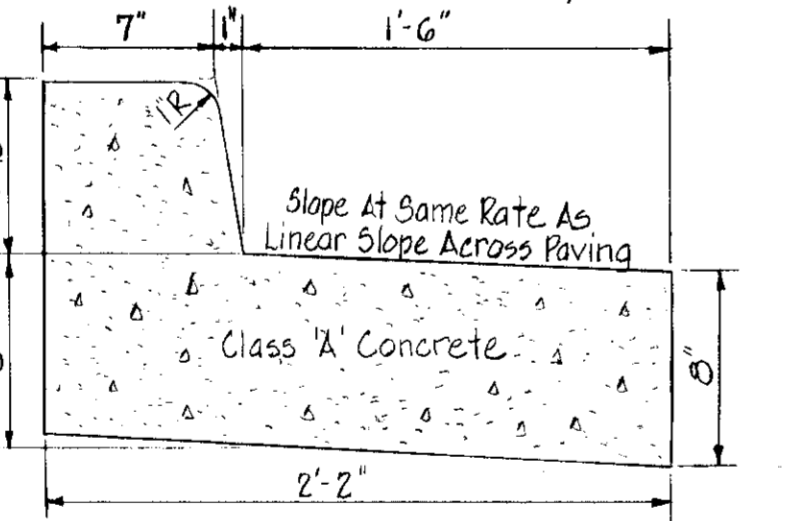
APPROVED: FOR PUBLIC WATER, PUBLIC SEWAGE AND STORM
DRAINAGE SYSTEMS AND ROADS; HOWARD COUNTY
DEPARTMENT OF PUBLIC WORKS.
John W. Bond 7-28-77
DIRECTOR DATE
John W. Bond 7/28/77
CHIEF, BUREAU OF HIGHWAYS DATE

HOWARD SOIL CONSERVATION DISTRICT
THIS DEVELOPMENT PLAN IS APPROVED FOR SOIL
EROSION & SEDIMENT CONTROL BY THE HOWARD
SOIL CONSERVATION DISTRICT.

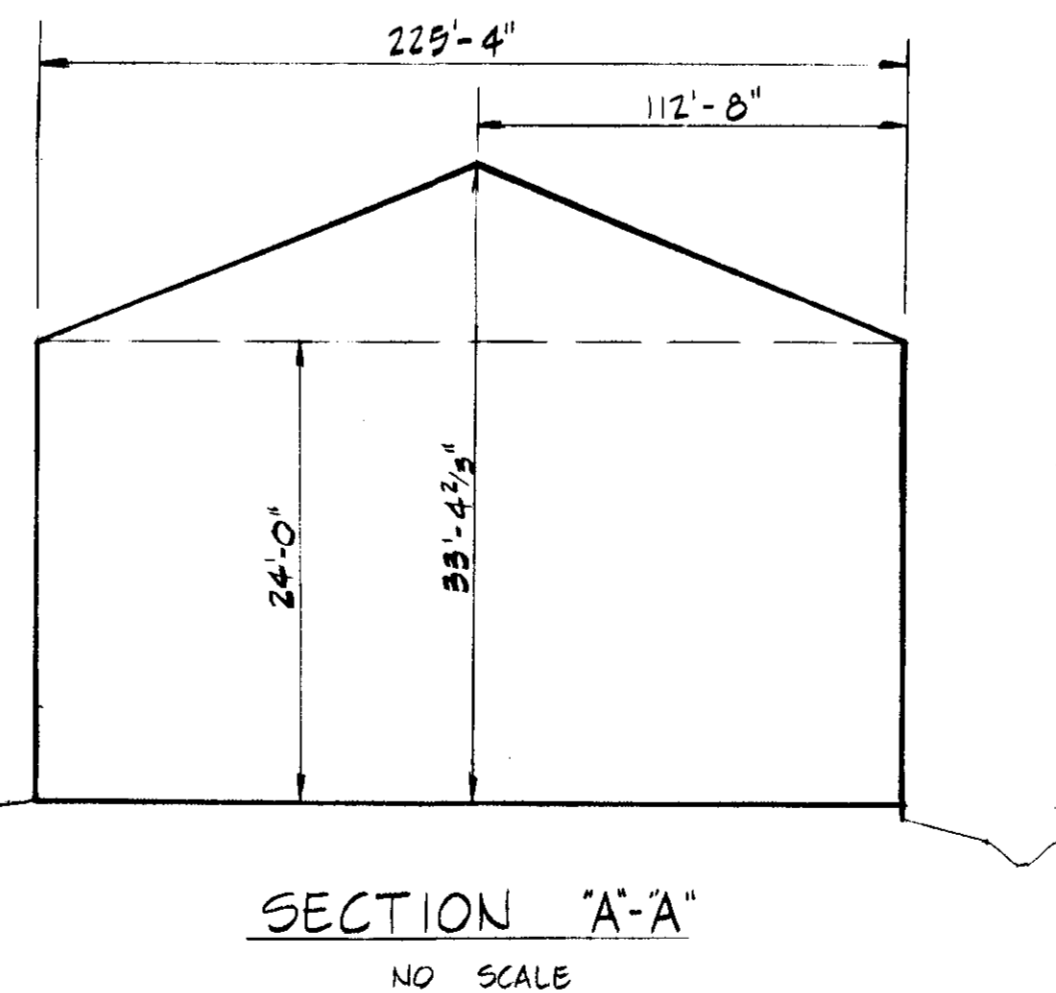
APPROVED: *John D. Wilson* 7-25-77
HOWARD SOIL CONSERVATION DISTRICT DATE

REVIEWED FOR HOWARD S.C.D. AND MEETS
TECHNICAL REQUIREMENTS.
SIGNATURE: *William Paulman* 7-25-77
U.S. SOIL CONSERVATION DISTRICT DATE

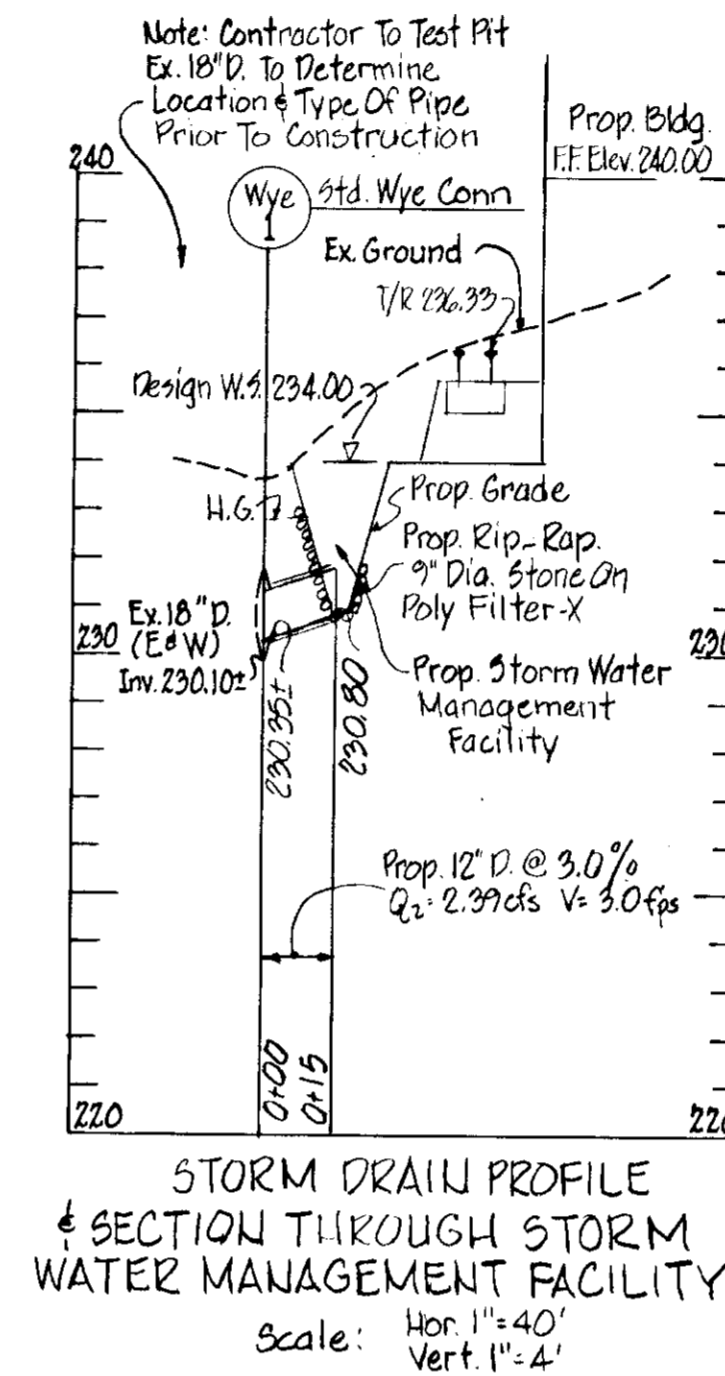
ENGINEER
GEORGE W. STEPHENS, JR.
ASSOCIATES, INC.
303 ALLEGHENY AVE.
TOWSON, MD. 21284



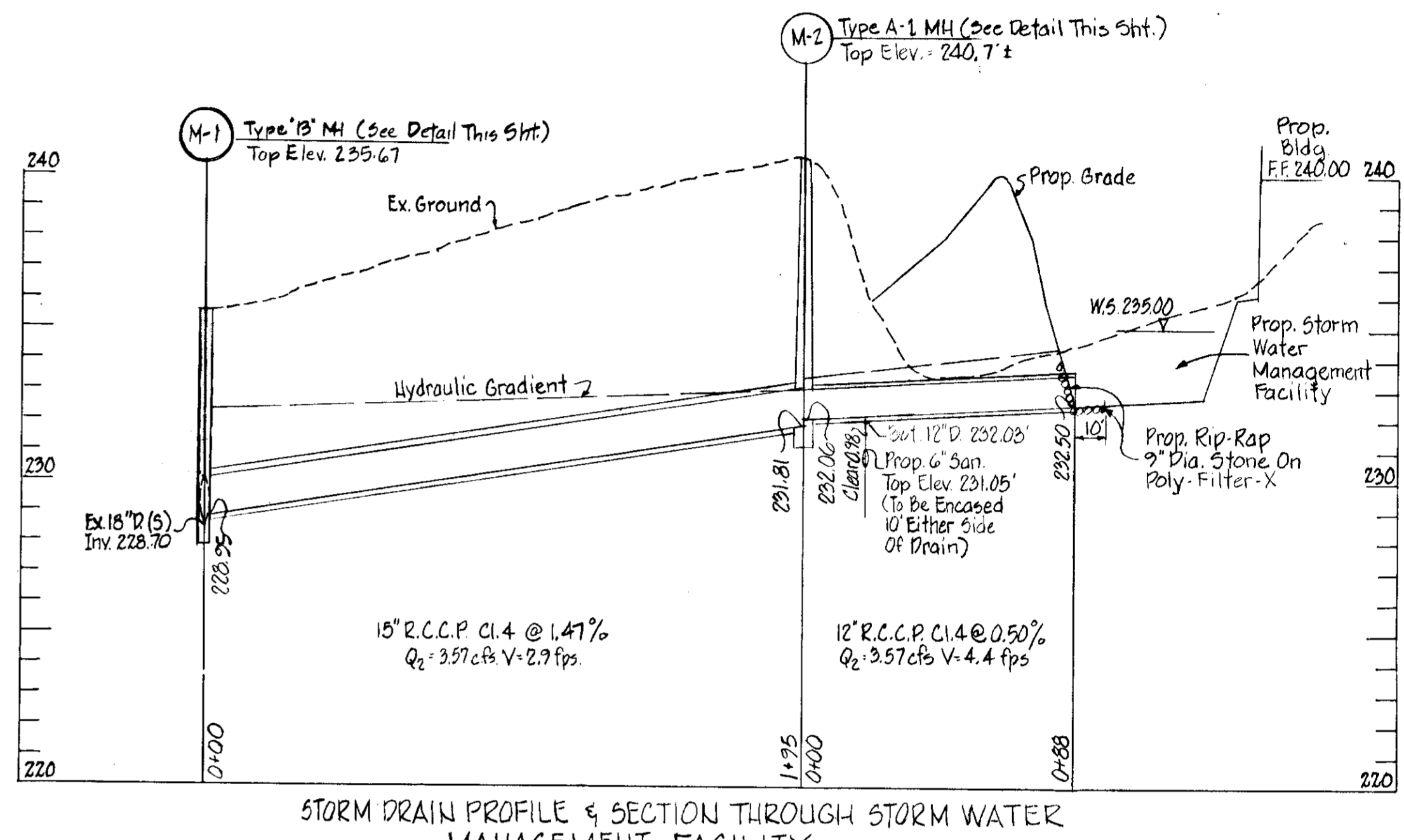
STD. 7" COMBINATION CONCRETE
CURB & GUTTER
NO SCALE



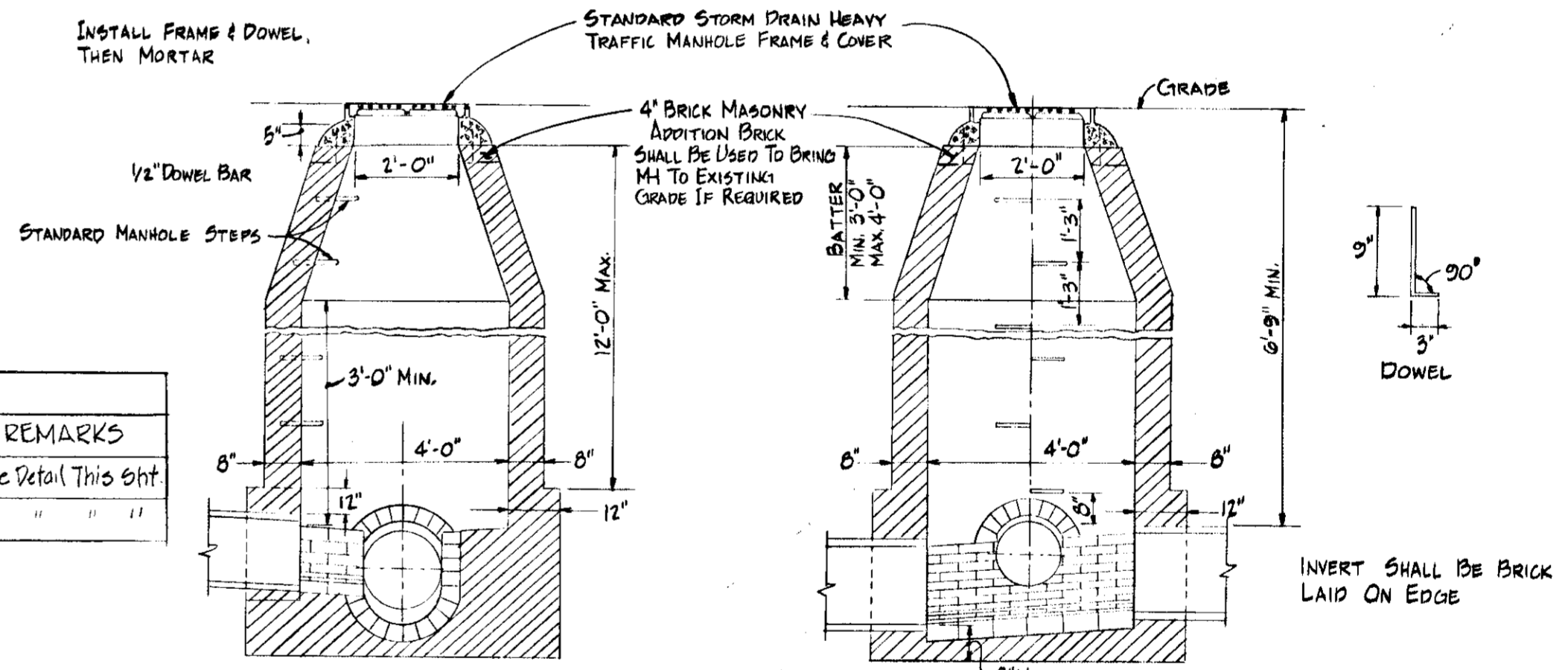
SECTION "A-A"
NO SCALE



STORM DRAIN PROFILE
& SECTION THROUGH STORM
WATER MANAGEMENT FACILITY
Scale: Hor. 1"=40'
Vert. 1"=4'



STORM DRAIN PROFILE & SECTION THROUGH STORM WATER
MANAGEMENT FACILITY
Scale: Hor. 1"=40'
Vert. 1"=4'



STANDARD TYPE A-1 MANHOLE
NO SCALE

- NOTES:
- 1) MANHOLE SHALL BE BRICK OR PLAIN CLASS "A" CONCRETE POURED IN PLACE
 - 2) USE 4-1/2" DOWEL BARS, SPACED 90° APART
 - 3) APPLY TWO COATS OF WATERPROOF BITUMASTIC COMPOUND OVER CEMENT MOTAR.

NO	TYPE	SIZE	INV. OUT	TOP ELEV	REMARKS
M-2	A-1	48"	231.81	240.71	See Detail This Sht
M-1	B	48"	228.70	235.67	" " " "

APPROVED
DIVISION OF LAND DEVELOPMENT
HOWARD COUNTY, MARYLAND
DATE 7-13-77

OWNER & DEVELOPER
DISTRIBUTION CENTERS, INC.
1300 DUBLIN RD
COLUMBUS, OHIO 43215

SITE PLAN
DISTRIBUTION CENTERS INC.
PLAT NO 3687
GREATER BALTIMORE CONSOLIDATED
WHOLESALE FOOD MARKET
BLOCK 'A' SECTION TWO PARCEL 'C1'
HOWARD COUNTY, MD. ELECT. DIST. #6
SCALE AS SHOWN JUNE 10, 1977
SHEET 2 OF 3 REV. DATE 7-9-77

SITE DATE

TOTAL AREA OF TRACT 5.52
EXISTING ZONING M-2
TOTAL FLOOR AREA 115,100 SF
TAX MAP NO. 43

SITE ANALYSIS

TOTAL AREA OF SITE 5.52 AC.
AREA TO BE DISTURBED 5.00 AC.
AREA TO BE PAVED 3.37 AC.
AREA TO BE VEGETATED 1.63 AC.
AREA TO REMAIN UNDISTURBED 0.52 AC.
AREA OF SUBMITTAL 5.52 AC.

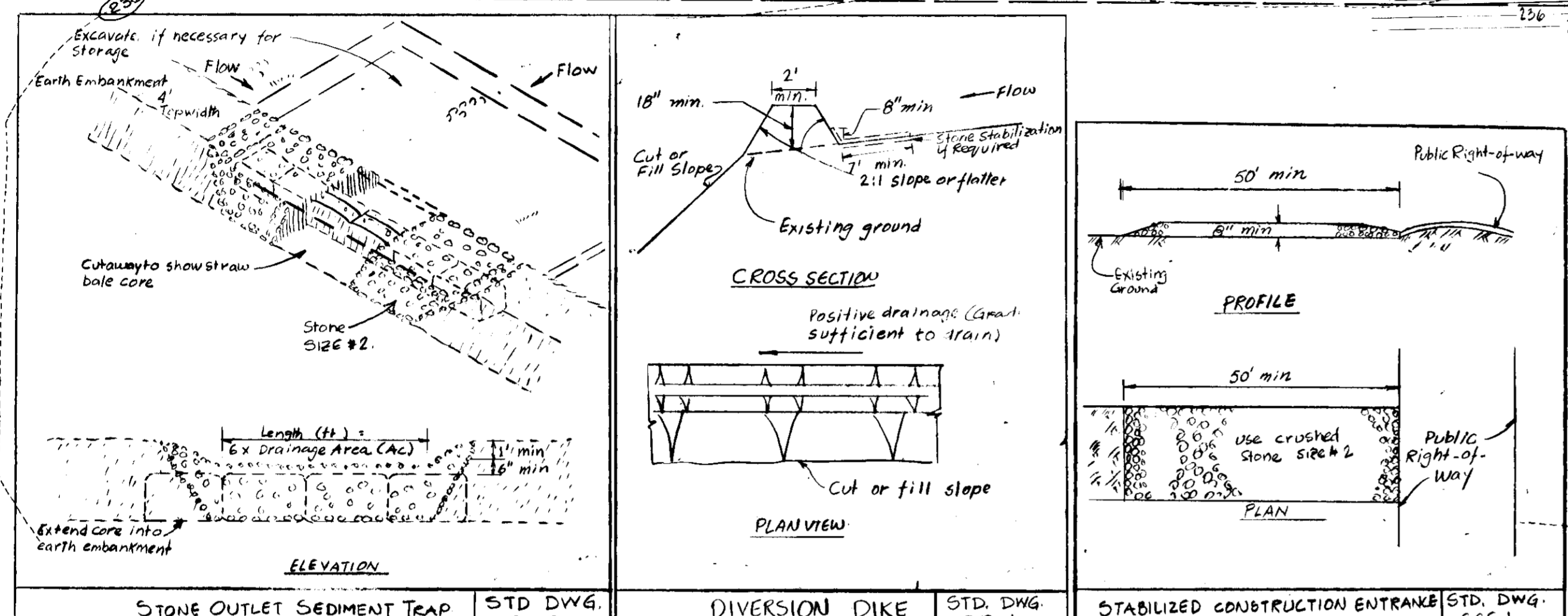
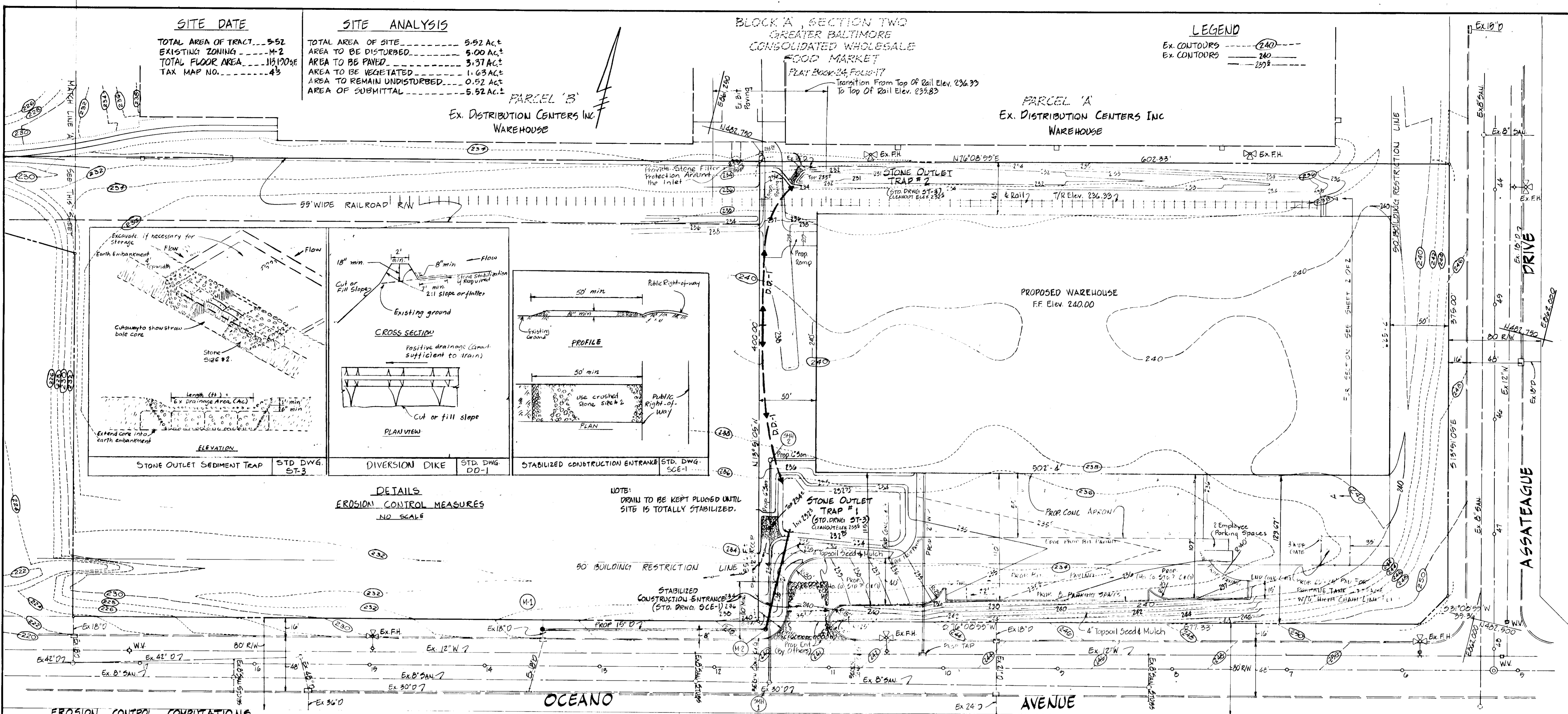
BLOCK 'A', SECTION TWO
GREATER BALTIMORE
CONSOLIDATED WHOLESALE
FOOD MARKET

LEGEND

EX. CONTOURS 240
EX. CONTOURS 240
EX. CONTOURS 230

PARCEL 'B'
EX. DISTRIBUTION CENTERS INC.
WAREHOUSE

PARCEL 'A'
EX. DISTRIBUTION CENTERS INC.
WAREHOUSE



DETAILS
EROSION CONTROL MEASURES
NO SCALE

NOTE:
DRAIN TO BE KEPT PLOUGED UNTIL
SITE IS TOTALLY STABILIZED.

EROSION CONTROL COMPUTATIONS

TRAP #2
D.A. = 2.21 AC.
VOL. REQ'D = 2.21 x 47 x 27 = 3,000 CF
VOL. PROVIDED TO ELEV. (233.0) = 6,000 CF
TOP OF BANK = 234.0
TOP OF STONE OUTLET = 233.0
LENGTH OF STONE OUTLET = 15'

TRAP #1
D.A. = 3.31 AC.
VOL. REQ'D = 3.31 x 47 x 27 = 5,000 CF
VOL. PROVIDED TO ELEV. (234.0) = 6,344
TOP OF BANK = 235.0
TOP OF STONE OUTLET = 234.0
LENGTH OF STONE OUTLET = 20'

EARTHWORK

CUT = 6,000 C.Y.
FILL (w/ 10% SHRINKAGE) = 6,000 C.Y.

EROSION CONTROL NOTES

- 1) CONTRACTOR TO NOTIFY THE HOWARD SOIL CONSERVATION DISTRICT OFFICE (466-3100) 24 HOURS BEFORE STARTING WORK.
- 2) CONTRACTOR TO INSTALL EROSION CONTROL MEASURES AS SHOWN BEFORE STARTING GENERAL GRADING OPERATION.
- 3) ALL PROPOSED PAVED AREAS ARE TO HAVE BASE COURSE MATERIAL INSTALLED AS SOON AS POSSIBLE AFTER GRADING OPERATION.
- 4) CONTRACTOR TO PLACE A CRUSHER-RUN STONE BASE COURSE ON THE PROPOSED DRIVEWAY ACCORDING STD. DWG. SCE-1 IMMEDIATELY AFTER IT HAS BEEN BROUGHT TO SUBGRADE FROM OCEANO AVE. AS SHOWN ON PLAN.
- 5) CONTRACTOR TO SOO OR SEED & MULCH ALL DISTURBED AREAS AS SOON AS THE FINAL GRADING HAS BEEN COMPLETED AND PRIOR TO OCCUPANCY OF THE STRUCTURE.
- 6) ALL REMAINING UNPAVED AREAS ARE TO BE STABILIZED IMMEDIATELY AFTER THE COMPLETION OF GRADING AS FOLLOWS: USE A MIXTURE OF KENTUCKY 31 TALL FESCUE AT THE RATE OF 200#/AC., SURFACE PREPARATION TO INCLUDE GROUND LIMESTONE OVER TOP SOIL AT THE RATE 1 1/4 T./AC., 60#/1,000 SQ.FT., COMMERCIAL FERTILIZER (10-10-10) AT THE RATE OF 3/4 T./AC. (35#/1,000 SQ.FT.) AND SUPER PHOSPHATE AT THE RATE OF 600#/AC. (15#/1,000 SQ.FT.) IMMEDIATELY AFTER SEEDING, UNIFORMLY MULCH AREA WITH UNWEATHERED SMALL GRAIN STRAW (PREFERABLY WHEAT) AT THE RATE OF 1 1/2 T./AC. ANCHOR WITH ASPHALT MULCH TIE DOWN USING LIQUID ASPHALT RAPID CURING (RC-10, RC-250 OR RC-800) AT THE RATE OF 0.1 GAL./SQ.Y.
- 7) PERMITS SLOPE SEEDING AS FOLLOWS: SEED SHALL BE A MIXTURE OF 30% INNOCULATED CROWN VETCH AND 70% KENTUCKY 31 TALL FESCUE APPLIED AT A RATE OF 60#/AC. FERTILIZER OF AN ANALYSIS (5-10-10) SHALL BE USED AND APPLIED AT A RATE OF 50#/1,000 SQ.F. UNIFORMLY MULCH AREA WITH UNWEATHERED SMALL GRAIN STRAW (PREFERABLY WHEAT) AT A RATE OF 1 1/2 T./AC. ANCHOR WITH ASPHALT MULCH TIE DOWN USING LIQUID ASPHALT RAPID CURING (RC-10, RC-250 OR RC-800) AT A RATE OF 0.1 GAL./SQ.Y. ALL SLOPES 3:1 AND GREATER SHALL RECEIVE 4" TOPSOIL.

ENGINEER'S CERTIFICATE

"I CERTIFY THAT THIS PLAN FOR EROSION AND SEDIMENT CONTROL REPRESENTS A PRACTICAL AND WORKABLE PLAN BASED ON MY PERSONAL KNOWLEDGE OF THE SITE CONDITIONS AND THAT IT WAS PREPARED IN ACCORDANCE WITH REQUIREMENTS OF THE HOWARD SOIL CONSERVATION DISTRICT."
ENGINEER'S SIGNATURE: [Signature] DATE: 8/1/77 SEAL

DEVELOPER'S CERTIFICATE

"I CERTIFY THAT ALL DEVELOPMENT AND/OR CONSTRUCTION WILL BE DONE ACCORDING TO THIS PLAN OF DEVELOPMENT AND PLAN FOR EROSION CONTROL AND I ALSO AUTHORIZE PERIODIC ON-SITE INSPECTION BY THE HOWARD SOIL CONSERVATION DISTRICT OR THEIR AUTHORIZED AGENTS AS ARE DEEMED NECESSARY."
SIGNATURE OF DEVELOPER: [Signature] DATE: 8/1/77

APPROVED FOR PUBLIC WATER AND PUBLIC SEWAGE SYSTEMS, HOWARD COUNTY HEALTH DEPARTMENT
Joseph Baynes, 8-1-77, DATE
ACTG. DIRECTOR

APPROVED HOWARD COUNTY OFFICE OF PLANNING AND ZONING
ACTG. DIRECTOR
8/1/77, DATE
CHIEF OF LAND DEVELOPMENT

APPROVED FOR PUBLIC WATER, PUBLIC SEWAGE AND STORM DRAINAGE SYSTEMS AND ROADS, HOWARD COUNTY DEPARTMENT OF PUBLIC WORKS
8/1/77, DATE
CHIEF, BUREAU OF HIGHWAYS

HOWARD SOIL CONSERVATION DISTRICT
THIS DEVELOPMENT PLAN IS APPROVED FOR SOIL EROSION & SEDIMENT CONTROL BY THE HOWARD SOIL CONSERVATION DISTRICT.

APPROVED: [Signature] 2-25-77, DATE
HOWARD SOIL CONSERVATION DISTRICT

REVIEWED FOR HOWARD S.C.D. AND MEETS TECHNICAL REQUIREMENTS.
SIGNATURE: [Signature] 2-25-77, DATE
U.S. SOIL CONSERVATION DISTRICT

ENGINEER
GEORGE W. STEPHENS, JR.
& ASSOCIATES, INC.
305 ALLEGHENY AVE.
TOWSON, MD. 21284

OWNER & DEVELOPER
DISTRIBUTION CENTERS, INC.
1300 DUBLIN RD.
COLUMBUS, OHIO 43219

EROSION CONTROL PLAN
DISTRIBUTION CENTERS INC.
PLAT NO. 3687
GREATER BALTIMORE CONSOLIDATED
WHOLESALE FOOD MARKET
BLOCK 'A', SECTION TWO, PARCEL 'C'
HOWARD COUNTY, MD.
SCALE: 1" = 40'
SHEET 3 OF 3
ELECT. DIST. #6
JUNE 10, 1977
P.N. 5792

7-13-77

SDP-77-82

