

R.J. HUTCHISON, JR.
LIBER 497 FOLIO 577
ZONED M-1

HOWARD COUNTY
COMMISSIONERS
LIBER 306 FOLIO 501
ZONED: M-1

NOTE:
ALL PARKING SPACES ARE 10' WIDE x 20' DEEP
ALL DRIVEWAYS BETWEEN PARKING ROWS 24' WIDE

LAUREL HARNESS RACING ASSOC., INC.
LIBER RHM. 305 FOLIO 172
TAX MAP NO. 47 PARCEL 142
ZONED M-1
AREA: 87.823 ACRES

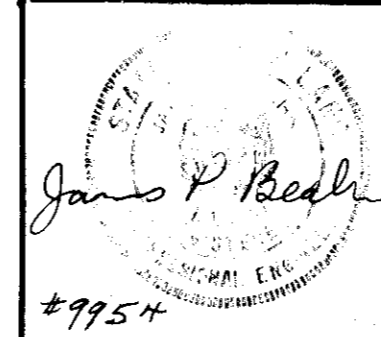
AREA OF SUBMITTAL 0.068 ACRES

TRAVENOR LABORATORIES INC.
LIBER 632 FOLIO 749
LIBER 633 FOLIO 180
ZONED: M-1

PARKING REQUIREMENTS:	
PUBLIC AREAS:	
Existing Grandstand (Capacity 4000)	1000 Spaces.
PROPOSED CLUBHOUSE:	
Stands and Seating (Capacity 3121)	780 Spaces.
Restaurant (8960 sq. ft.)	90 Spaces.
EMPLOYEES:	
Grandstand, Proposed Clubhouse, Administration, Shops, Ticket Booth, Drivers Lounge (400 Employees)	200 Spaces.
STABLE AREAS:	
Drivers, Trainers, Backstretch help 220	110 Spaces.
Total Space Required	2180
Total Parking Spaces Provided.	2234

PARKING FOR HANDICAPPED
TOTAL PATRON CAPACITY 7121
RESERVED PARKING (18' 1000)
(EACH ADD'L 1000)
TOTAL REQUIRED 2180
TOTAL PROVIDED 2234

NOTE:
PROPERTY OUTLINE DATA AND EXISTING TOPO AS SHOWN HEREON OBTAINED FROM PLAT PREPARED BY WILSON T. BALLARD CO. ENTITLED "LAUREL RACEWAY BOUNDARY OUTLINE AND TOPOGRAPHIC SURVEY" DATED JULY, 1971.



PREPARED BY:
EWELL, BOMHARDT & ASSOC.
Consulting Engineers
1800 N. CHARLES STREET
BALTIMORE MARYLAND

C. B. A. JOB NO. 2187-4

APPROVED: FOR PUBLIC WATER AND PUBLIC SEWERAGE SYSTEMS HOWARD COUNTY HEALTH DEPARTMENT.
W. M. Goodwin
6-15-77
DATE

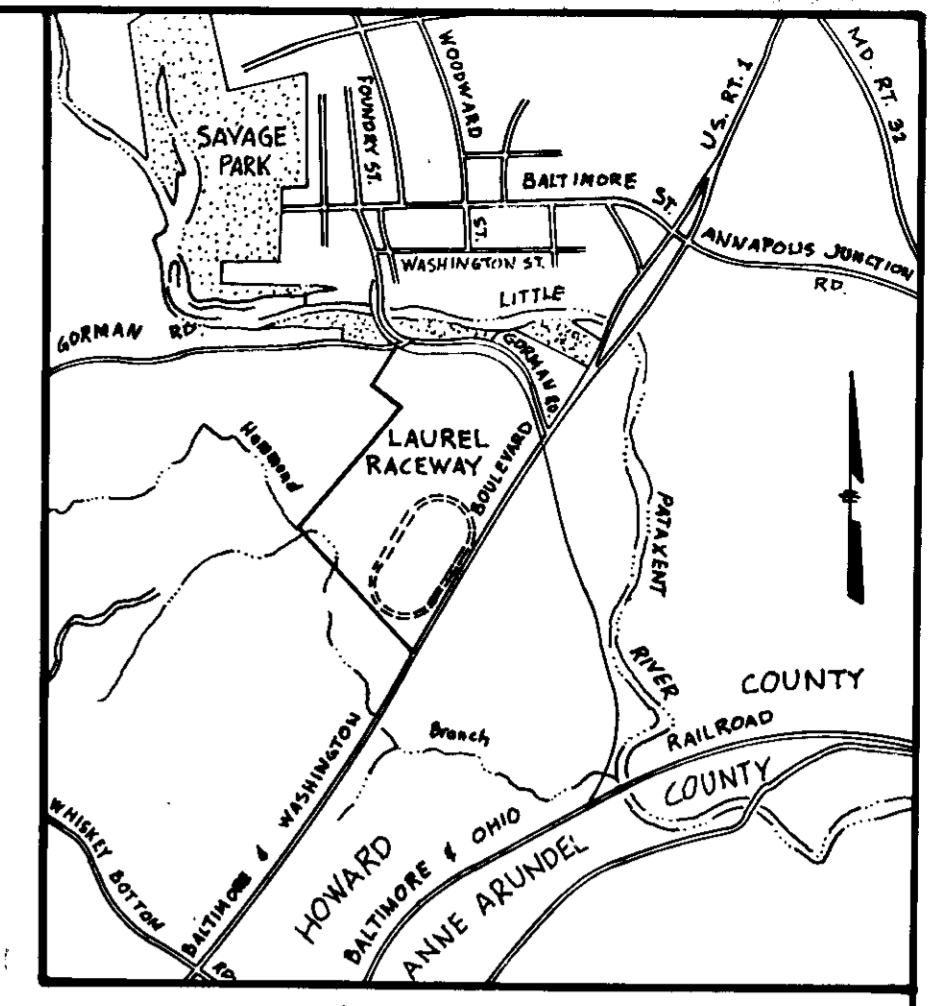
APPROVED: HOWARD COUNTY OFFICE OF PLANNING AND ZONING.
W. M. Goodwin
6-15-77
DATE

APPROVED: FOR PUBLIC WATER, PUBLIC SEWERAGE AND STORM DRAINAGE SYSTEMS AND ROADS.
HOWARD COUNTY DEPT. OF PUBLIC WORKS.

APPROVED: FOR PUBLIC WATER AND PUBLIC SEWERAGE SYSTEMS HOWARD COUNTY HEALTH DEPARTMENT.
W. M. Goodwin
6-15-77
DATE

SDP-77-80

JOB NO.	SCALE	DRAWN BY	CHECKED BY	DATE
	1" = 60'			APRIL 15, 1977
SITE DEVELOPMENT PLAN				
PROPOSED STORAGE BUILDING AND TV TOWERS				
ADDITION TO APPROVED SDP#78				
LAUREL RACEWAY				
TAX MAP #47 BLOCK #14 ELECTION DISTRICT G				
HOWARD COUNTY, MARYLAND				
OWNER				
LAUREL HARNESS RACING ASSOCIATION, INC.				
2220 WASHINGTON BOULEVARD				
LAUREL MARYLAND				

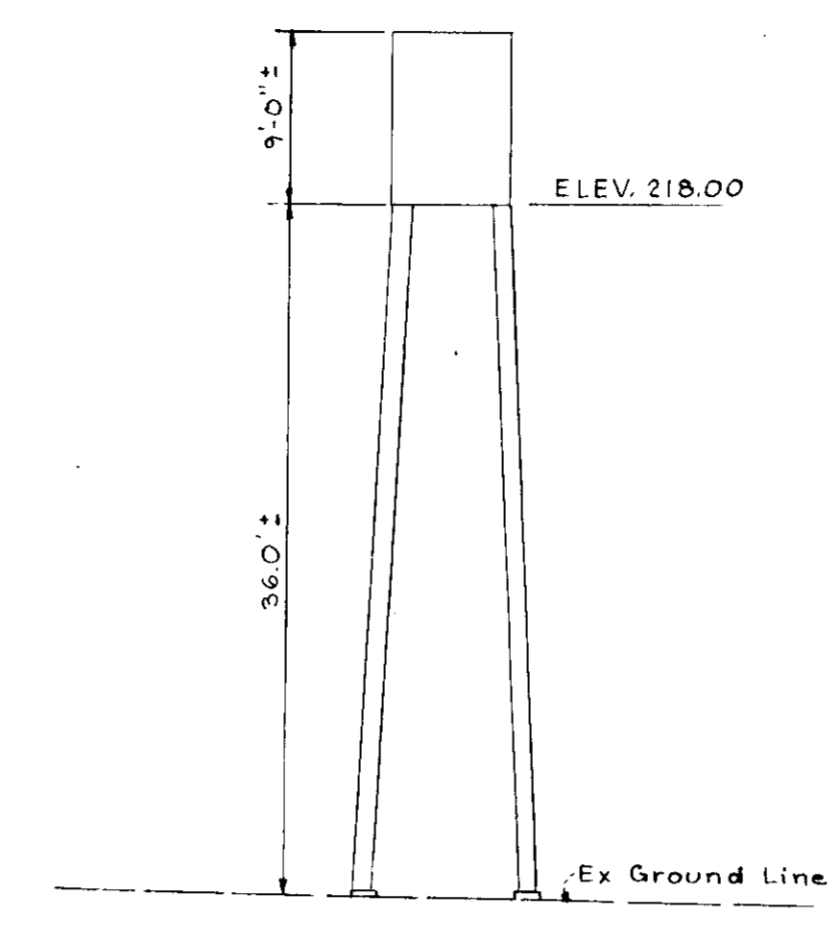


VICINITY MAP
SCALE: 1"=2000'

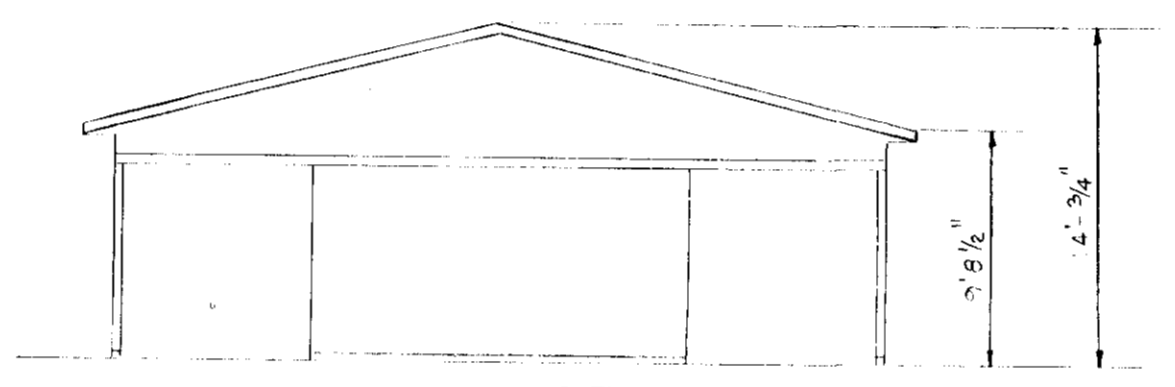
GENERAL NOTES

- Existing Topography Shown Here On Has Been Obtained From Field Survey And From Information Obtained From A Plat Entitled "LAUREL RACEWAY", Boundary Outline And Topographic Survey Prepared By Wilson T. Ballard Co Dated July 1971.
- The Accuracy Of Existing Underground Utilities Is Not Guaranteed The Contractor Must Verify All Utility Locations To His Own Satisfaction.
- Upon Completion Of Grading All Disturbed Areas Shall Be Stabilized By Seeding And Mulching On 4" Topsoil.
- Sediment Control Measures To Be Installed And Stabilized Prior To Any Grading, Clearing Or Disturbance Of The Existing Surface Of The Site.
- All Sediment Control Measures Are To Remain In Place Until Permission For Their Removal Has Been Obtained From The Department Of Inspections And Permits, Phone 465-3180 Or 465-3000 X-305.
- Notify The Department Of Inspections And Permits At Least 24 Hours Before Starting Any Work.
- Clubhouse Addition Approved As/SDP-77-18

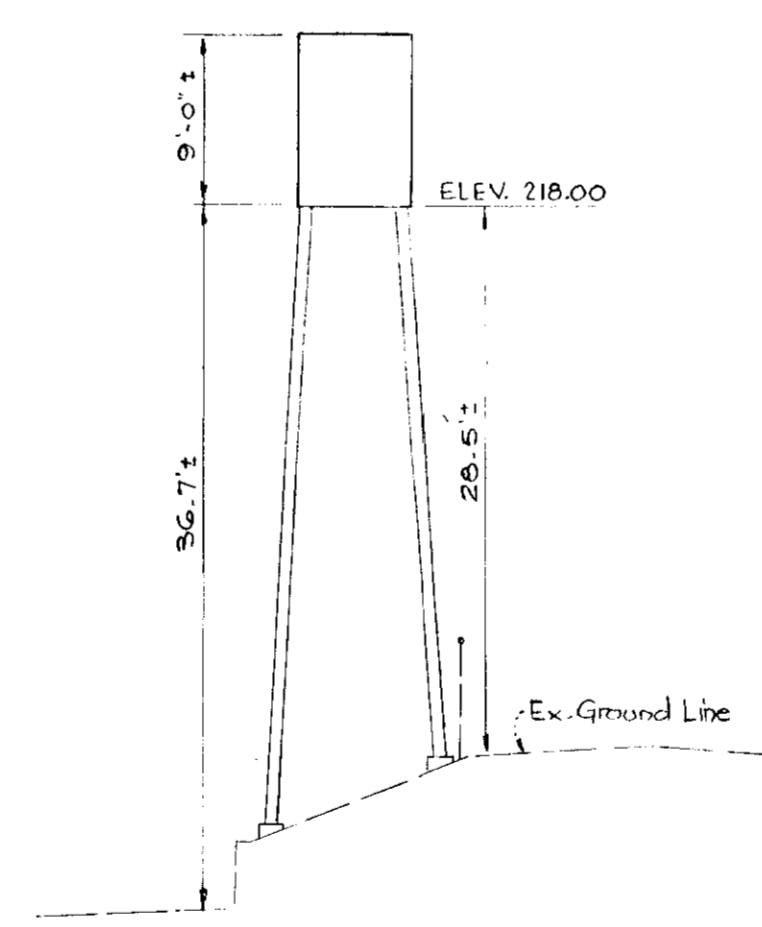
PROFILE
NORTH END TOWER



PROFILE
PROPOSED STORAGE BUILDING



PROFILE
SOUTH END TOWER



SEQUENCE OF CONSTRUCTION (STORAGE BLDG)

- INSTALL TEMPORARY STRAW BALE DIKE.
- CLEARING AND GRUB SITE.
- SITE GRADING AND BUILDING CONSTRUCTION.
- SEEDING AND MULCHING OF ALL DISTURBED AREA NOT OTHERWISE TREATED.
- REMOVE TEMPORARY SEDIMENT CONTROL DEVICES.

SITE ANALYSIS

TOTAL AREA OF SITE (AREA OF SUBMITTAL)	.0068 ACRES
TOTAL AREA DISTURBED	.0068 ACRES
TOTAL AREA OF ROOFS AND PAVEMENT	.0018 ACRES
TOTAL AREA OF VEGETATION	.0050 ACRES

FLOOR AREA - PROPOSED STORAGE BUILDING = 1024 SQ. FT.

LEGEND

- 164- EXISTING CONTOURS
- 162- PROPOSED SPOT ELEVATION
- - - EDGE OF EXISTING PAVING
- x-x- EXISTING CHAIN LINK FENCE
- - - DRAINAGE FLOW ARROWS

APPROVED
DIVISION OF LAND DEVELOPMENT

HOWARD COUNTY, MARYLAND
DATE 5-10-77



REVIEWED FOR HOWARD SOIL CONSERVATION DISTRICT AND MEETS TECHNICAL REQUIREMENTS
C. Wayne Hays
U.S. SOIL CONSERVATION SERVICE DATE 6/6/77

THIS DEVELOPMENT PLAN IS APPROVED FOR SOIL EROSION AND SEDIMENT CONTROL BY THE HOWARD SOIL CONSERVATION DISTRICT
John D. Mayo
HOWARD SOIL CONSERVATION DISTRICT DATE 6-6-77

DEVELOPER CERTIFICATION: I CERTIFY THAT ALL DEVELOPMENT AND/OR CONSTRUCTION WILL BE DONE ACCORDING TO THIS PLAN OF DEVELOPMENT AND PLAN FOR EROSION AND SEDIMENT CONTROL, AND I ALSO AUTHORIZE PERIODIC ON-SITE INSPECTION BY THE HOWARD SOIL CONSERVATION DISTRICT OR THEIR AUTHORIZED AGENTS, AS ARE DEEMED NECESSARY DEVIATION FROM THIS PLAN WILL NOT BE MADE UNLESS AUTHORIZED BY THE HOWARD SOIL CONSERVATION DISTRICT.
David M. Abernethy
DATE 4/15/77

ENGINEERS CERTIFICATION: I CERTIFY THAT THIS PLAN FOR EROSION AND SEDIMENT CONTROL REPRESENTS A PRACTICAL AND WORKABLE PLAN BASED ON MY PERSONAL KNOWLEDGE OF THE SITE CONDITIONS AND THAT IT WAS PREPARED IN ACCORDANCE WITH THE REQUIREMENTS OF HOWARD SOIL CONSERVATION DISTRICT.
David M. Abernethy
DATE 4/15/77

APPROVED: FOR PUBLIC WATER AND PUBLIC SEWERAGE SYSTEMS HOWARD COUNTY HEALTH DEPARTMENT
John G. Gules
COUNTY HEALTH OFFICER DATE 6-5-77

APPROVED: HOWARD COUNTY OFFICE OF PLANNING AND ZONING
William J. Harris
PLANNING DIRECTOR DATE 6-8-77
David M. Abernethy
CHIEF, DIVISION OF LAND DEVELOPMENT DATE 6-8-77

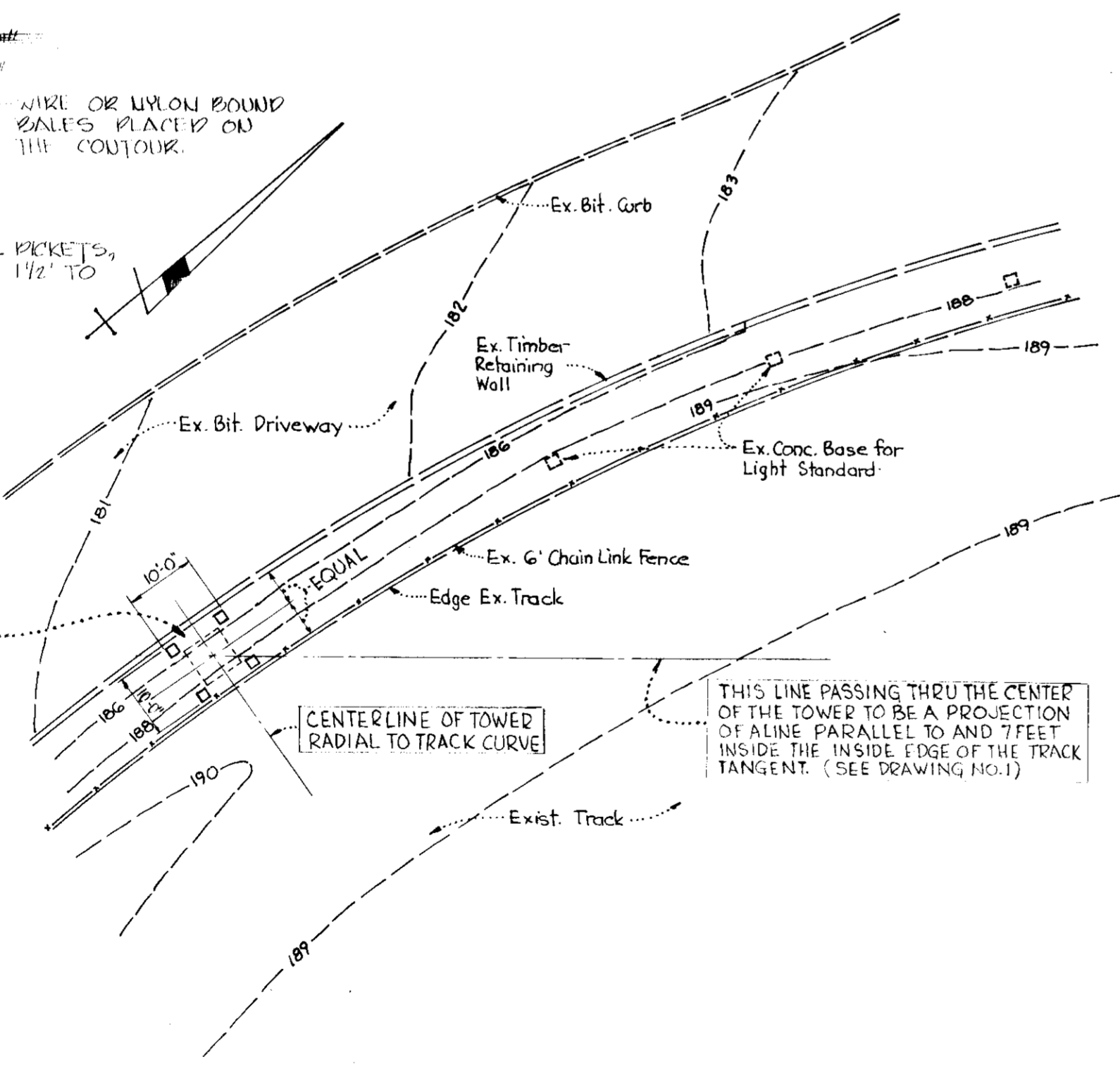
APPROVED: FOR PUBLIC WATER, PUBLIC SEWERAGE AND STORM DRAINAGE SYSTEMS AND ROADS.
HOWARD COUNTY DEPT. OF PUBLIC WORKS

David M. Abernethy
DIRECTOR DATE 6-13-77
William H. McLeod
CHIEF BUREAU OF HIGHWAYS DATE 6/13/77

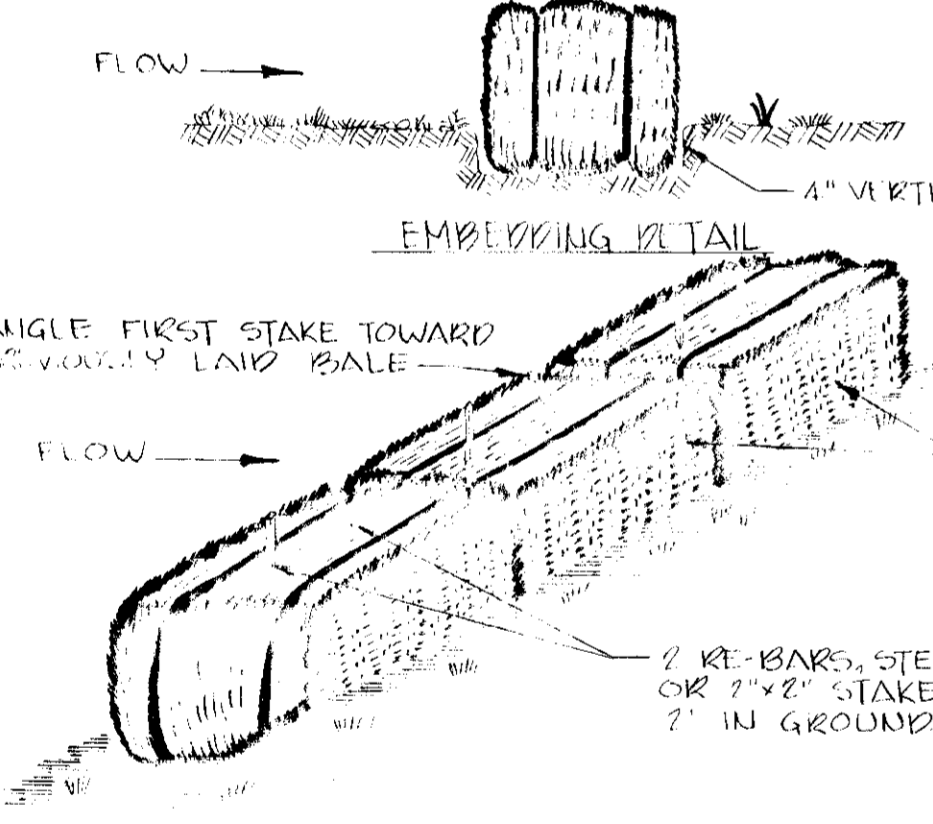
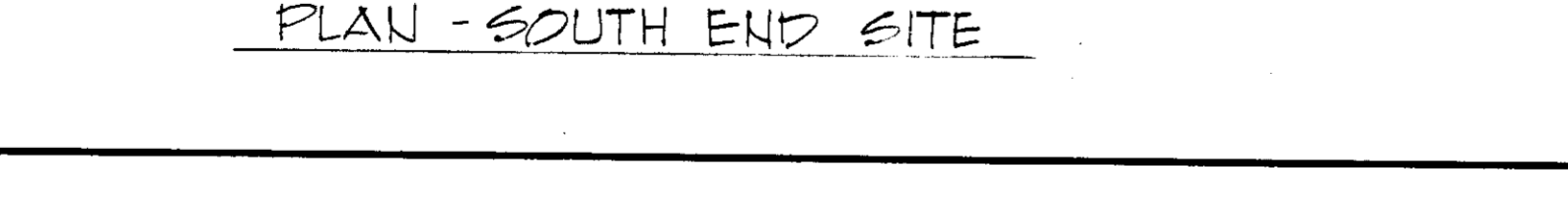
PREPARED BY EWELL, BOMHARDT & ASSOC.
Consulting Engineers
1800 N. CHARLES STREET
BALTIMORE MARYLAND
E.B.A. JOB NO. 2187-H

Temporary Straw Bale Dike Shall Conform To Specification And Detail Shown On Drawing No. SBD-1 Page 18.03 Of The Manual Entitled "STANDARDS AND SPECIFICATION FOR SOIL EROSION AND SEDIMENT CONTROL IN DEVELOPING AREAS" Prepared By The SOIL CONSERVATION DISTRICT DATED JULY, 1975.

PLAN - NORTH END SITE



PLAN - SOUTH END SITE



JOB NO.	2187-H
SCALE	1"=20'
DRAWN BY	W.J.M.
CHECKED BY	G.R.P.
DATE	APRIL 15, 1977
2 OF 2	

SITE DEVELOPMENT PLAN
PROPOSED STORAGE BUILDING AND TV TOWERS
ADDITION TO PLAT NO. SDP-77-18
TAX MAP #47 BLOCK #17 ELECTION DISTRICT G
HOWARD COUNTY, MARYLAND
OWNER
LAUREL HARNES RACING ASSOCIATION INC.
20810
9242 WASHINGTON BOULEVARD MARYLAND