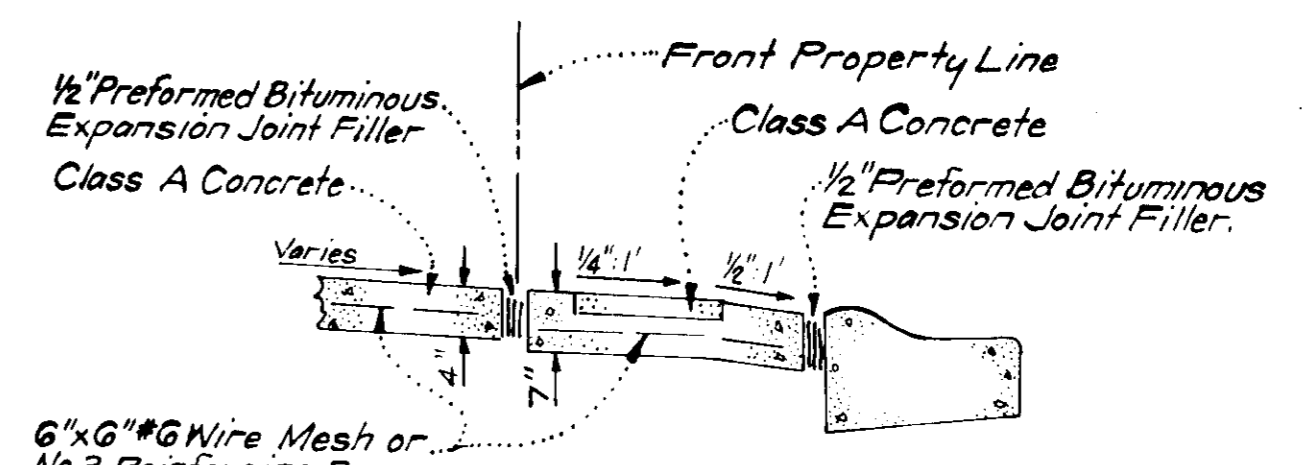
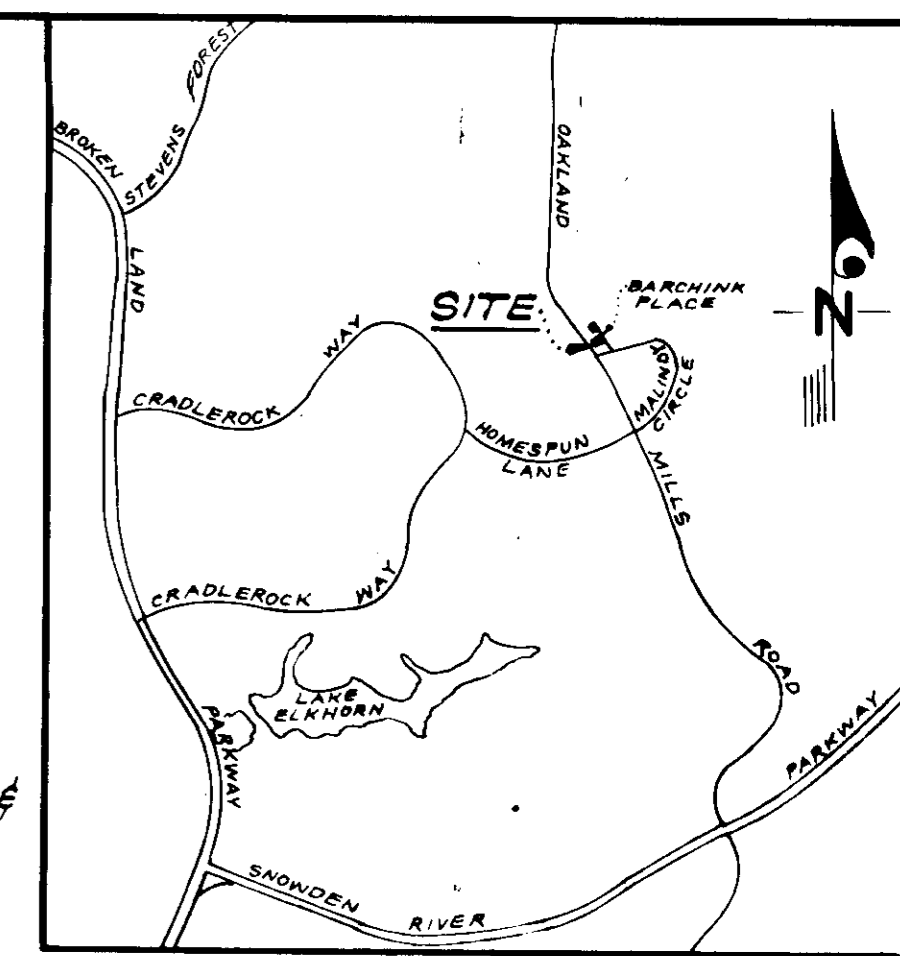


NOTE: Use Residential Driveway Entrance Howard Co. Std. Dwg. No. D-34, pg. 89, Except where driveway abuts Modified Comb. Curb & Gutter.

PLAN
SECTION "A" - "A"
DRIVEWAY ABUTTING MODIFIED COMB. CURB & GUTTER
NO SCALE



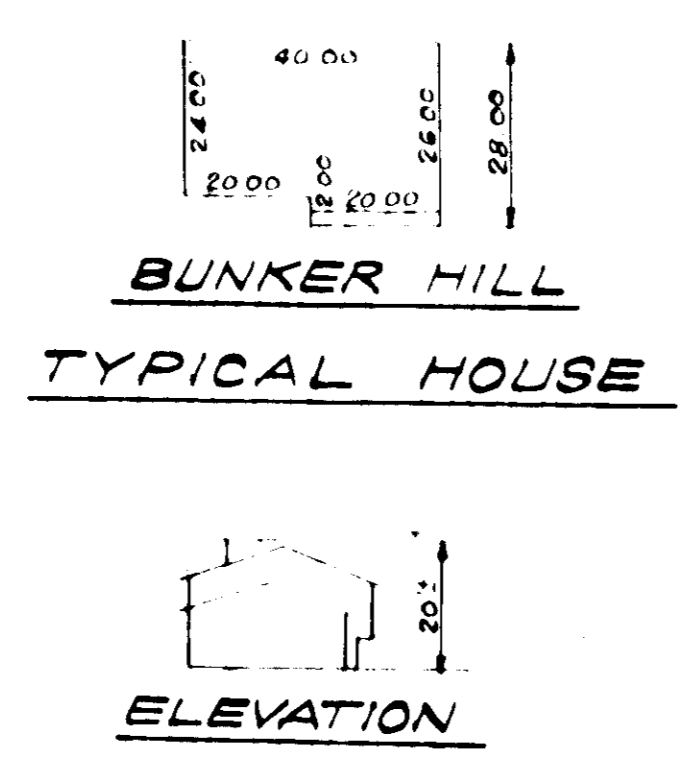
NOTE: All Materials and Construction shall be in accordance with Howard Co. Road Construction Code



- LEGEND**
- 1. Contour Interval 2 Ft.
 - 2. Existing Contours 370
 - 3. Proposed Contours 370
 - 4. Spot Elevations +70±
 - 5. Direction of Drainage →

GENERAL NOTES

1. The land included in this Plan is zoned New Town (S.F.M.D.).
2. The Lot shown on this plan is covered by Final Development Plan Phase 146 recorded in Plat Book 28 Folios 42 to 56.
3. All coordinates are based on Maryland State Grid System. Elevations are based on the U.S. Coast and Geodetic Survey Mean Sea Level Datum 1929.
4. The Area covered in this submission is located on Tax Map No. 36.
5. The total area included in this plan is 0.212 Acre.
6. All roadways shown are public and are existing.
7. Any damage to County Owned, Rights-of-Way or Paving shall be corrected at the Developer's expense.
8. Lot 400 was recorded in Plat Book 27 Folio 77.
9. Lot 400 is part of a previously approved Sediment and Erosion Control Plan G.P. #77-06.
10. All structures shown including those on the adjoining lots are existing.



APPROVED FOR PUBLIC WATER AND PUBLIC SEWERAGE SYSTEMS, HOWARD COUNTY HEALTH DEPARTMENT

Joyce M. Grew 6-3-77
HEALTH OFFICER DATE

APPROVED FOR PLANNING AND ZONING

[Signature] 6-6-77
PLANNING DIRECTOR DATE

APPROVED FOR LAND DEVELOPMENT

[Signature] 6-8-77
CHIEF DIVISION OF LAND DEVELOPMENT DATE

APPROVED FOR PUBLIC WATER AND PUBLIC SEWERAGE, STORM DRAINAGE SYSTEMS AND PUBLIC ROADS, HOWARD COUNTY DEPARTMENT OF PUBLIC WORKS

[Signature] 6-11-77
DIRECTOR DATE

[Signature] 6-11-77
CHIEF BUREAU OF HIGHWAYS DATE

APPROVED
PLANNING BOARD
OF HOWARD COUNTY
DATE 4-27-77



CLARK • FINEROCK & SACKETT ENGINEERS • PLANNERS • SURVEYORS 11315 LOCKWOOD DRIVE • SILVER SPRING, MARYLAND 20904 • (301) 593-3400		
DESIGNED DBS	SITE DEVELOPMENT PLAN LOT 400 COLUMBIA VILLAGE OF OWEN BROWN SECTION 2 AREA 1 6TH ELECTION DISTRICT HOWARD COUNTY, MARYLAND	SCALE 1" = 30'
DRAWN KWC		10F1
CHECKED DBS		JOB NO.
DATE Mar., 1977		FOR: RYLAND GROUP, INC. COL. DIVISION Suite 200 V.G.M. Office Building Columbia, Maryland 21045