

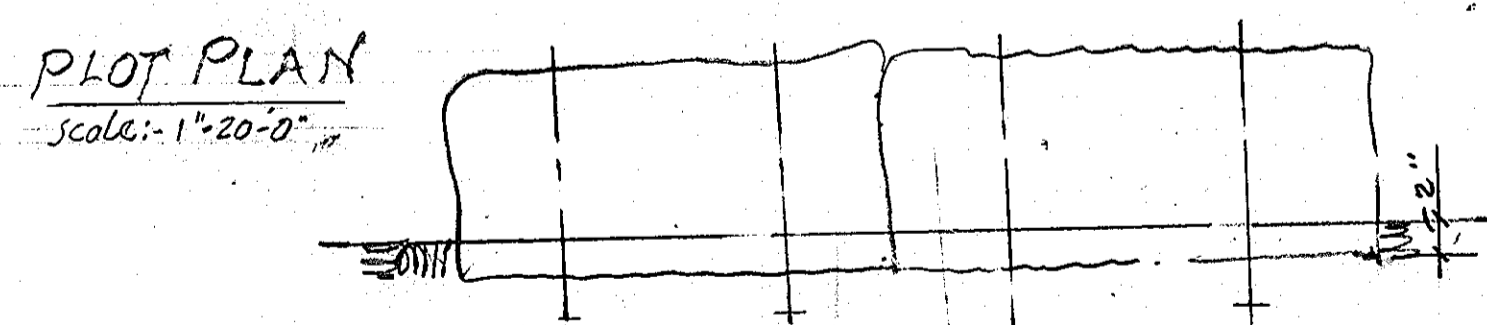
ZONED GE-CL1

HOWARD F. RINK
GENEVIÈVE A. RINK
R.H.N. 315-262
IMPROVED

GENERAL NOTES

- All construction shown herein shall be in accordance with the HOWARD COUNTY ROAD CONSTRUCTION CODE and standard specifications dated November 27, 1962 and revised August 1968, and the Zoning Regulations of Howard County.
- SITE ANALYSIS:
 - Gross Area: 36,242 sq. ft. ±
 - Present Zoning: GE-CL1
 - Proposed Use: WAREHOUSE/OFFICE & Distribution
- PROTECTION OF EROSION AREAS:
 - All unpaved areas disturbed by construction shall be graded to 3" below the finished grade as shown. The contractor shall then place 3" topsoil to finished grade.
 - LIME FERTILIZER:
 - Pulverized dolomite limestone shall be spread on graded areas at the rate of 2000 lbs per acre.
 - Fertilizer: 600 lbs. of 10-10-10 per acre worked into soil immediately following spreading operations for a depth of 3 inches.
 - The following mix shall be used for all seeded areas which shall be sown at a rate of not less than 4 lbs per 2900 sq. ft.:
 - 50% Kentucky Blue Grass
 - 40% Creeping Red Fescue
 - 10% Chewings fescue
 - MULCHING: Mulch uniformly all seeded areas immediately after seeding with a weathered small grain straw or hay at the rate of 1.5 tons per acre and spray with an emulsified asphalt (P.S. 1 or 2) at 0.24 gal per sq. yd.
- Public water and sanitary facilities are adequate and available.
- BENCH MARK: Elevation 181.40
- TAX MAP NO. 38 BLOCK 13 PARCEL 00209
- Locations of utilities shown hereon is approximate only and is obtained from the best information available. Contractor shall locate existing utilities to his own satisfaction before any connections are made.
- Contractor shall notify the following utilities prior to starting work shown hereon:
 - A. VERIZON: 888-481-0387
 - B. BALTIMORE GAS & ELEC. CO. 410-685-0123
- CONTOURS:
 - A. Existing 1-foot intervals
- FENCES: as shown
- PARKING DATA:
 - A. No. of Employees: 6
 - B. No. of spaces required Per the parking needs study dated June 30, 2013, a total of 10 parking spaces are required
 - C. No. of spaces provided: 10 (1 handicapped space)
- LIGHTING: ☉ Denotes Directional flood lights shielded to prevent glare

- SEQUENCE OF WORK:
- PROVIDE STRAW BALE DIKE
 - PERFORM EXCAVATION & SUBFLOOR GRADING
 - GRADE AND BACK-FILL EXCAVATION AND SEED DISTURBED AREA IN FIRST GROWING SEASON AFTER PLACEMENT.



"I CERTIFY THAT ALL DEVELOPMENT AND/OR CONSTRUCTION WILL BE DONE ACCORDING TO THIS PLAN OF DEVELOPMENT AND PLAN FOR EROSION AND SEDIMENT CONTROL, AND I ALSO AUTHORIZE PEOPLE ON-SITE INSPECTION BY THE HOWARD SOIL CONSERVATION DISTRICT OR THEIR AUTHORIZED AGENTS, AS ARE DEEMED NECESSARY."

Robert A. Cathey PSC Manager 4-19-77 DATE
DEVELOPER

Reviewed for HOWARD S.C.D. (Manager) and meets Technical Requirements
C. Wayne Ray Date 4/27/77
Signature
U.S. Soil Conservation Service

THIS DEVELOPMENT PLAN IS APPROVED FOR SOIL EROSION AND SEDIMENT CONTROL BY THE HOWARD SOIL CONSERVATION DISTRICT

Approved John D. Myers date 4-27-77
HOWARD S.C.D.

"I CERTIFY THAT THIS PLAN FOR EROSION AND SEDIMENT CONTROL REPRESENTS A PRACTICAL AND WORKABLE PLAN BASED ON MY PERSONAL KNOWLEDGE OF THE SITE CONDITIONS AND THAT IT WAS PREPARED IN ACCORDANCE WITH THE REQUIREMENTS OF THE HOWARD SOIL CONSERVATION DISTRICT."

Henry C. Schlessner 4-19-77 DATE
ENGINEER

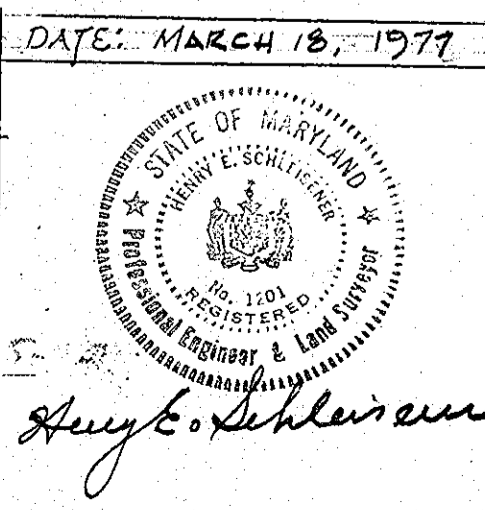
APPROVED FOR PUBLIC WATER AND PUBLIC SEWERAGE SYSTEMS
HOWARD COUNTY HEALTH DEPARTMENT
HOWARD COUNTY HEALTH OFFICER
James M. Boyer 5/6/77 DATE

APPROVED: HOWARD COUNTY OFFICE OF PLANNING & ZONING
PLANNING DIRECTOR
Thomas J. Davis 5-9-77 DATE
John W. Muehlman 5-2-77 DATE
CHIEF, DIVISION OF LAND DEVELOPMENT

APPROVED FOR PUBLIC WATER, PUBLIC SEWERAGE AND STORM DRAINAGE SYSTEMS AND ROADS
HOWARD COUNTY DEPARTMENT OF PUBLIC WORKS
DIRECTOR
Raymond 5-3-77 DATE
Dorville W. Wehlend 5/3/77 DATE
CHIEF, BUREAU OF HIGHWAYS

OWNER
CANTON STABLES-LLC
6335 HOWARD LANE
ELKBRIDGE, MD. 21075

ENGINEER
HENRY C. SCHLESSNER
ENGINEER, LAND SURVEYOR, L.I.A.
4157 THE ALAMEDA BALTO. MD 21218



STORAGE BUILDING ADDITION
SITE PLAN, DETAILS & ETC

DATESVILLE CASKET
SALES COMPANY INC.
ELKBRIDGE INDUSTRIAL PARK
LOT G, SECTION 1, 1ST ELEC. DIST.
HOWARD COUNTY MARYLAND

OR BY approved
H.C.S.

REVISIONS	DRAWING NO.
	SP
	J.C.1

APPROVED
DIVISION OF LAND DEVELOPMENT
HOWARD COUNTY, MARYLAND
DATE 4-20-77
JMM