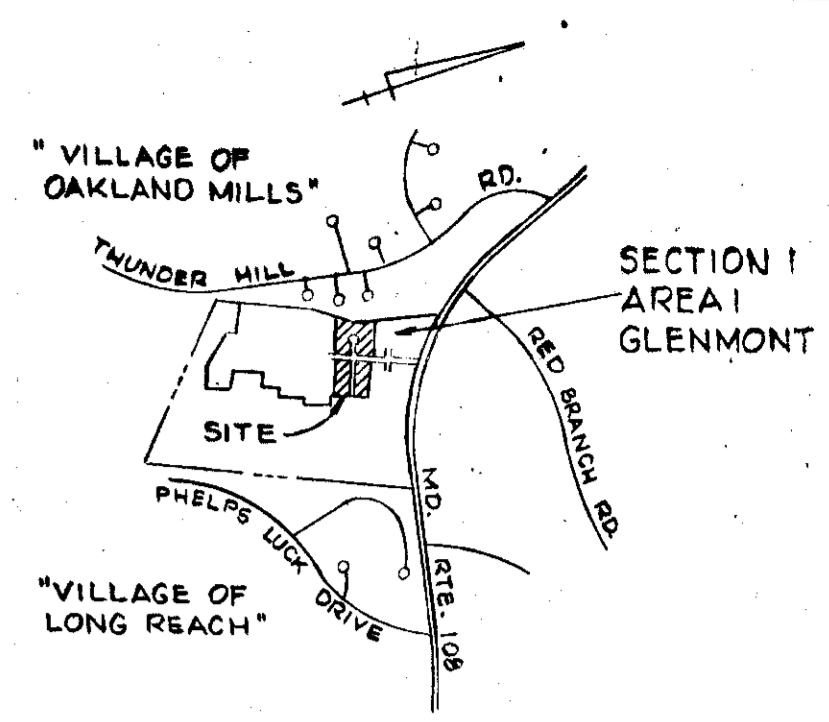
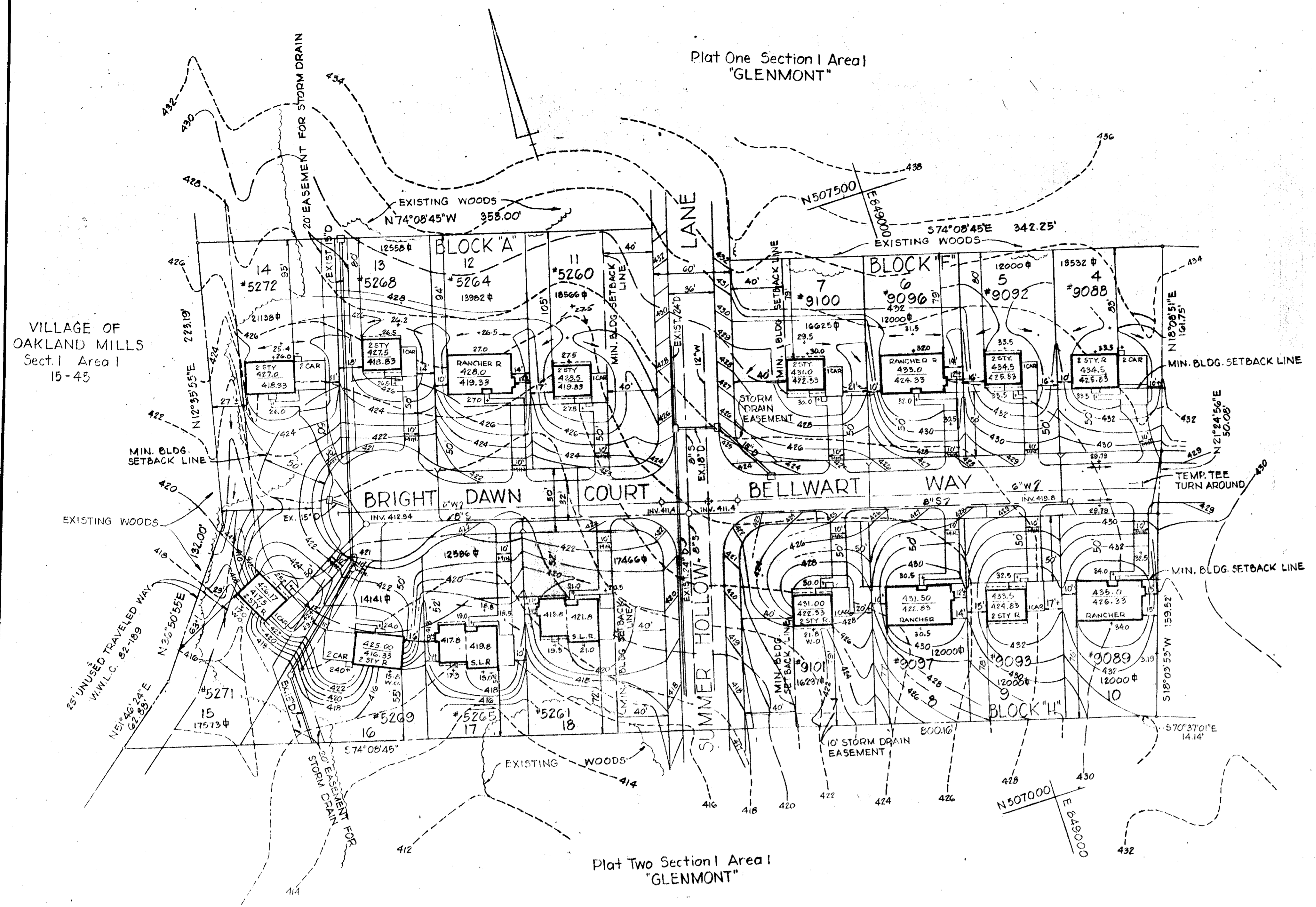


PLANT SCHEDULE

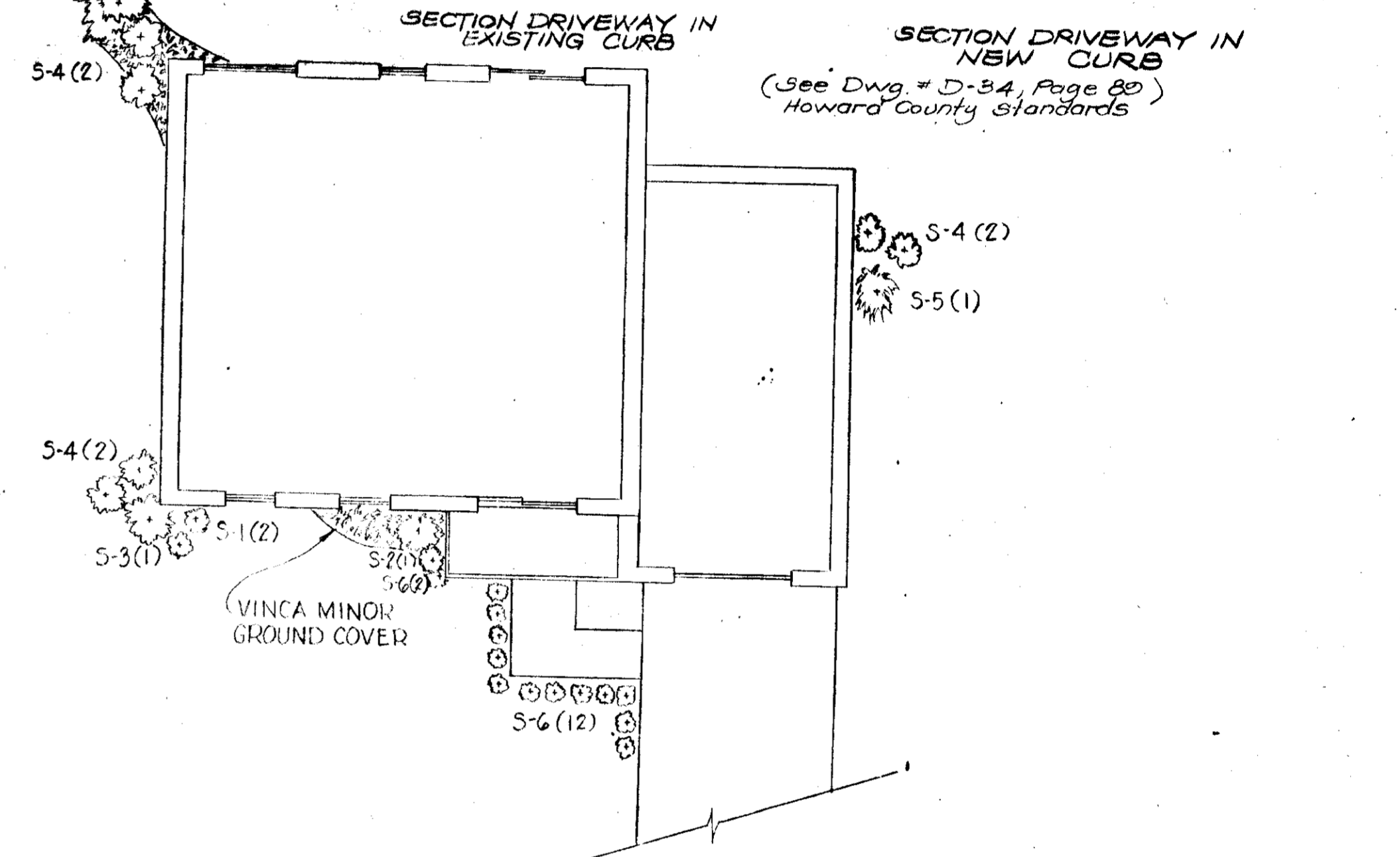
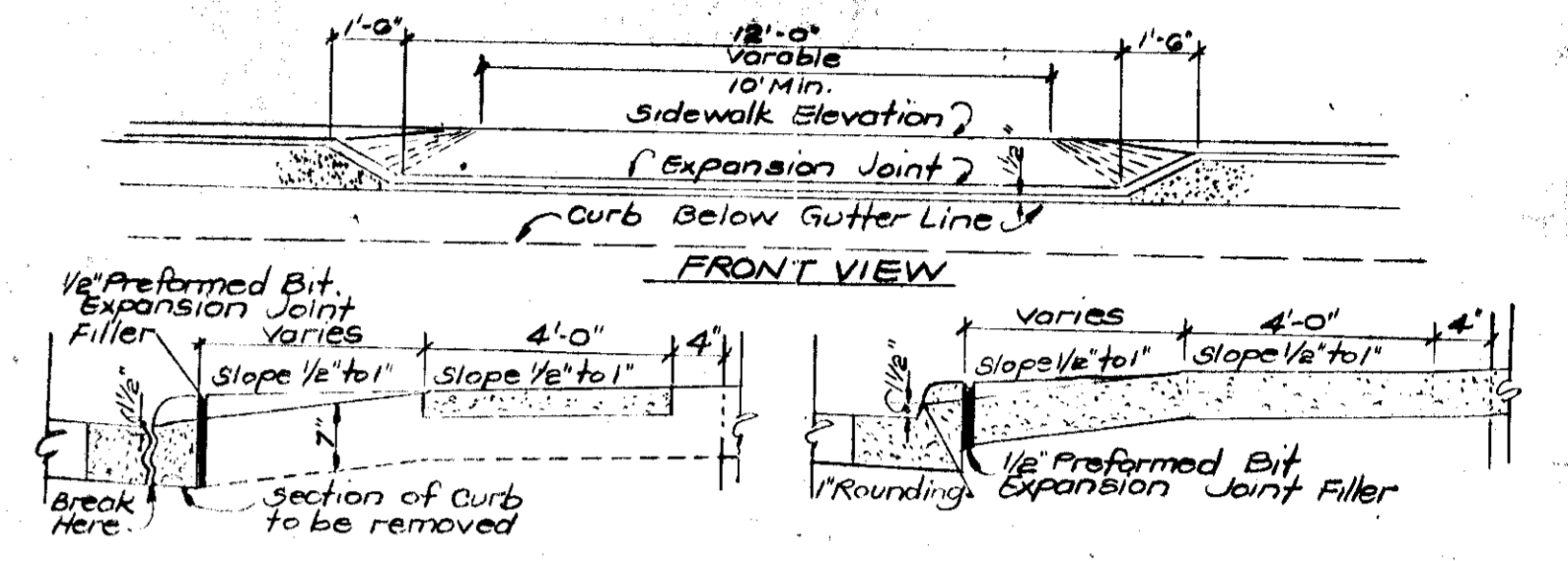
S-1	ILEX CORNUTA BURFORDI NANA DWARF BULFORD HOLLY	15"-18"	2
S-2	ILEX "NELLIE R. STEVENS"	5'	1
S-3	THUJA OCCIDENTALIS PYRAMIDALIS PYRAMICAL ARBOR VITAE	4'-5'	1
S-4	TAXUS BACCATA REPENDENS ENGLISH YEW	18"-24"	6
S-5	PYRACANTHA COCCINEA MONROVIA FIRETHORN	5'-4"	1
S-6	TAXUS CUSPIDATA NANA DWARF JAPANESE YEW	15"-18"	14-2%
T-3	PINUS THUNBERGERI	4'-5'	1



VICINITY MAP
SCALE: 1" = 2000'



Plat One Section I Area 2
"GLENMONT"



TYPICAL PLANTING PLAN

GENERAL NOTES

- TAX MAP NO. 30
- TOTAL AREA 6.45 ACRES
- PUBLIC WATER AND SEWER TO BE UTILIZED
- ALL COORDINATES ARE BASED ON MARYLAND STATE GRID SYSTEM
- ELEVATIONS ARE BASED ON THE US COAST AND GEODETIC SURVEY MEAN SEA LEVEL DATUM 1929
- ALL DRIVEWAYS TO BE BUILT AS PER HOWARD CO. ROAD CONSTRUCTION CODE DRAWING D-34 PAGE 89

SITE ANALYSIS

- ZONING - R-12
- NUMBER OF LOTS SHOWN - 16
- AREA INCLUDED IN THIS PERMISSION - 6.45 ACRES

APPROVED: For Public Water & Public Sewerage Systems, Howard County Health Department
James H. Brooks 4-28-77
 County Health Officer Date

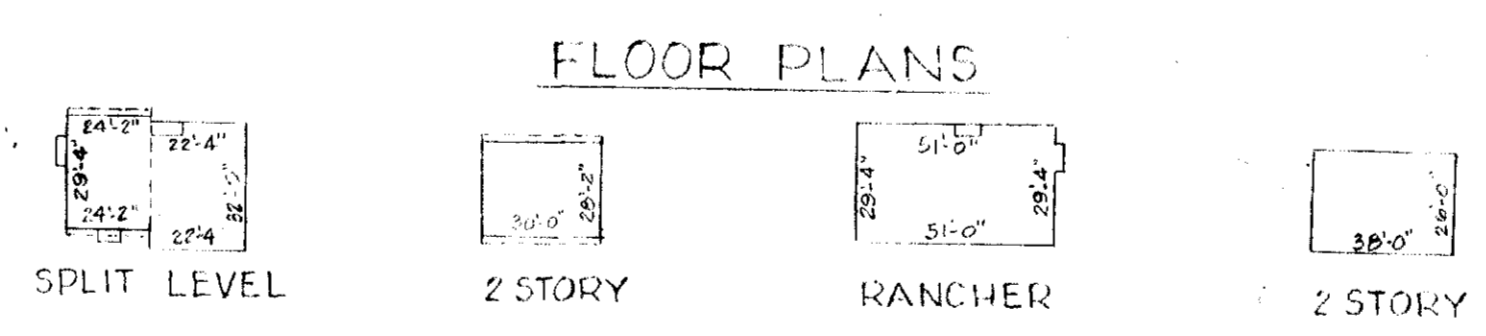
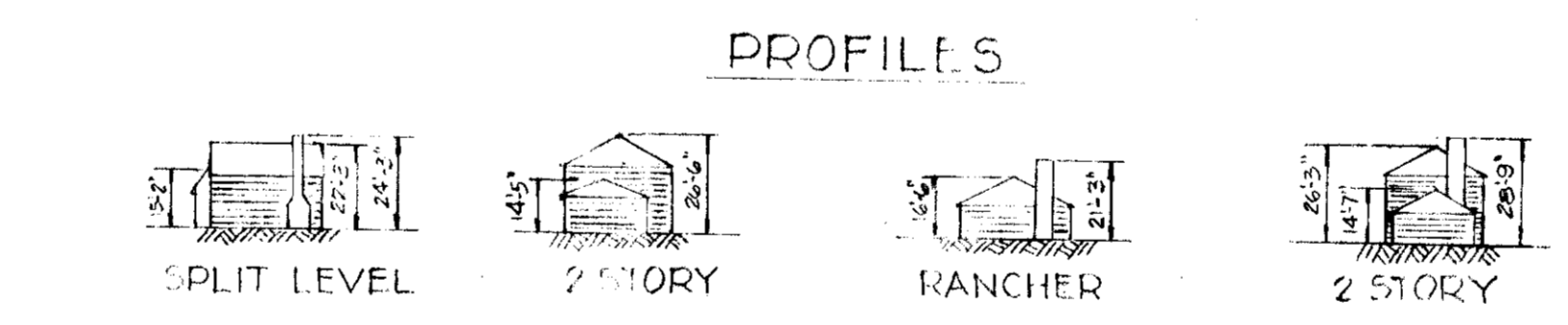
APPROVED: Howard County Office of Planning & Zoning
Thomas L. Hampe 5-3-77
 Planning Director Date

Arthur W. Muench 4-29-77
 Chief, Division of Land Development Date

APPROVED: For Public Water, Public Sewerage & Storm Drainage Systems & Roads
 Howard County Department of Public Works

T. J. Pagan 4-26-77
 Director Date

Franklin W. McLeod 4/26/77
 Chief, Bureau of Highways Date



TYPICAL HOUSES
NO SCALE

OWNER AND DEVELOPER
 COLONIAL CORNER SERVICE CORPORATION
 FAYETTE & ST. PAUL STREETS
 BALTIMORE, MARYLAND 21202

SITE DEVELOPMENT PLAN

GLENMONT

SECTION I AREA I
 LOTS 11-18 BLOCK "A"
 LOTS 4-7 BLOCK "F"
 LOTS 7-10 BLOCK "H"

ELECTION DISTRICT GUILFORD NO. 6 HOWARD COUNTY, MD.
 SCALE: 1" = 50' FEBRUARY 2, 1977

RECORDED AS PLAT # 3572 ON DECEMBER 1, 1976 AMONG THE LAND RECORDS OF HOWARD COUNTY, MARYLAND

APPROVED
 DIVISION OF LAND DEVELOPMENT

HOWARD COUNTY, MARYLAND
 DATE 4-5-77



MCA EOD
 MCA ENGINEERING CORP.
 1040 CROMWELL SQUARE PLAZA
 BALTIMORE, MD. 21202

REVIEWED FOR HOWARD COUNTY S.C.E. & MEETS TECHNICAL REQUIREMENTS.

Eric V. Hoffman 4-19-77 DATE:
U.S. SOIL CONSERVATION SERVICE

THIS DEVELOPMENT PLAN IS APPROVED FOR SOIL EROSION AND SEDIMENT CONTROL BY THE HOWARD COUNTY SOIL CONSERVATION DISTRICT.

APPROVED: *Richard W. Ziehm* DATE: 4-19-77
HOWARD COUNTY P.E.C.D.

ENGINEER'S CERTIFICATION

I CERTIFY THAT THIS PLAN FOR EROSION & SEDIMENT CONTROL REPRESENTS A PRACTICAL & WORKABLE PLAN BASED ON MY PERSONAL KNOWLEDGE OF THE SITE CONDITIONS AND THAT IT WAS PREPARED IN ACCORDANCE WITH THE REQUIREMENTS OF THE HOWARD COUNTY SOIL CONSERVATION DISTRICT.



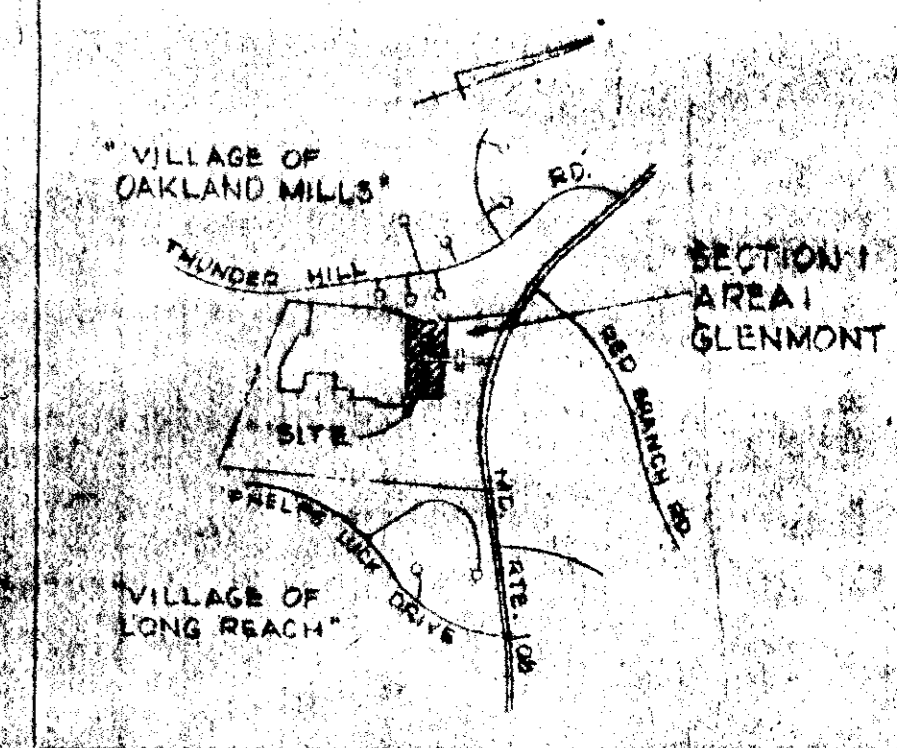
Eric V. Hoffman DATE: 2-3-77
M.C.A. ENGINEERING CORP.
1020 CROMWELL BRIDGE RD.
TOWSON, MD.

DEVELOPER'S CERTIFICATION

I CERTIFY THAT ALL DEVELOPMENT AND/OR CONSTRUCTION WILL BE DONE ACCORDING TO THIS PLAN OF DEVELOPMENT & PLAN OF EROSION & SEDIMENT CONTROL & I ALSO AUTHORIZE PERIODIC ON SITE INSPECTION BY HOWARD CO. SOIL CONSERVATION DISTRICT OR THEIR AUTHORIZED AGENTS AS ARE DEEMED NECESSARY. DEVIATION FROM THIS PLAN ONLY IF AUTHORIZED BY THE HOWARD COUNTY SOIL CONSERVATION DISTRICT.

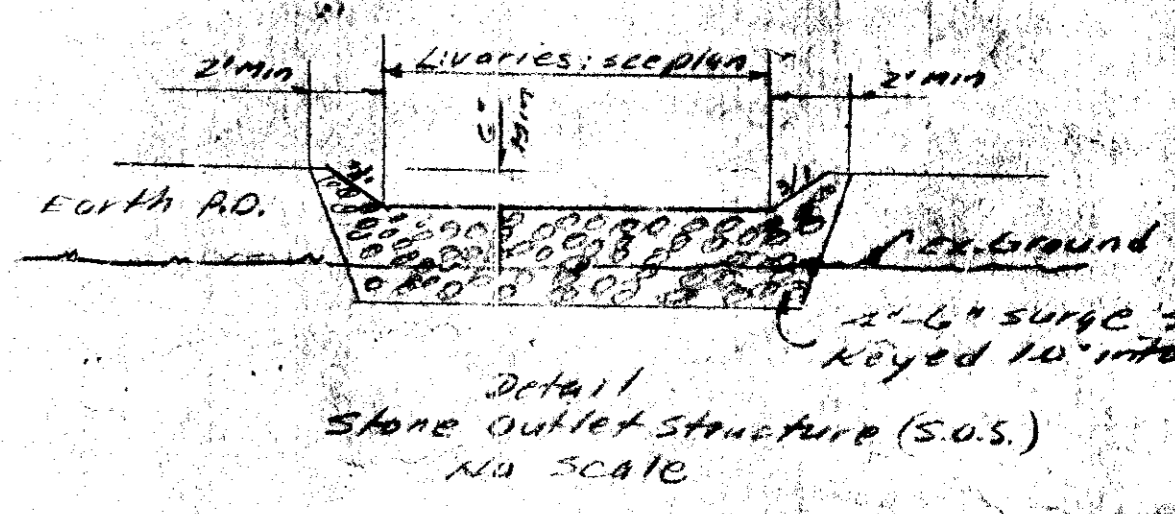
Richard W. Ziehm DATE: 2-5-77

COLONIAL CARRIER SERVICE CORPORATION
BALTIMORE FEDERAL BLDG.
10 E. FAYETTE STREET
BALTIMORE, MD 21202.

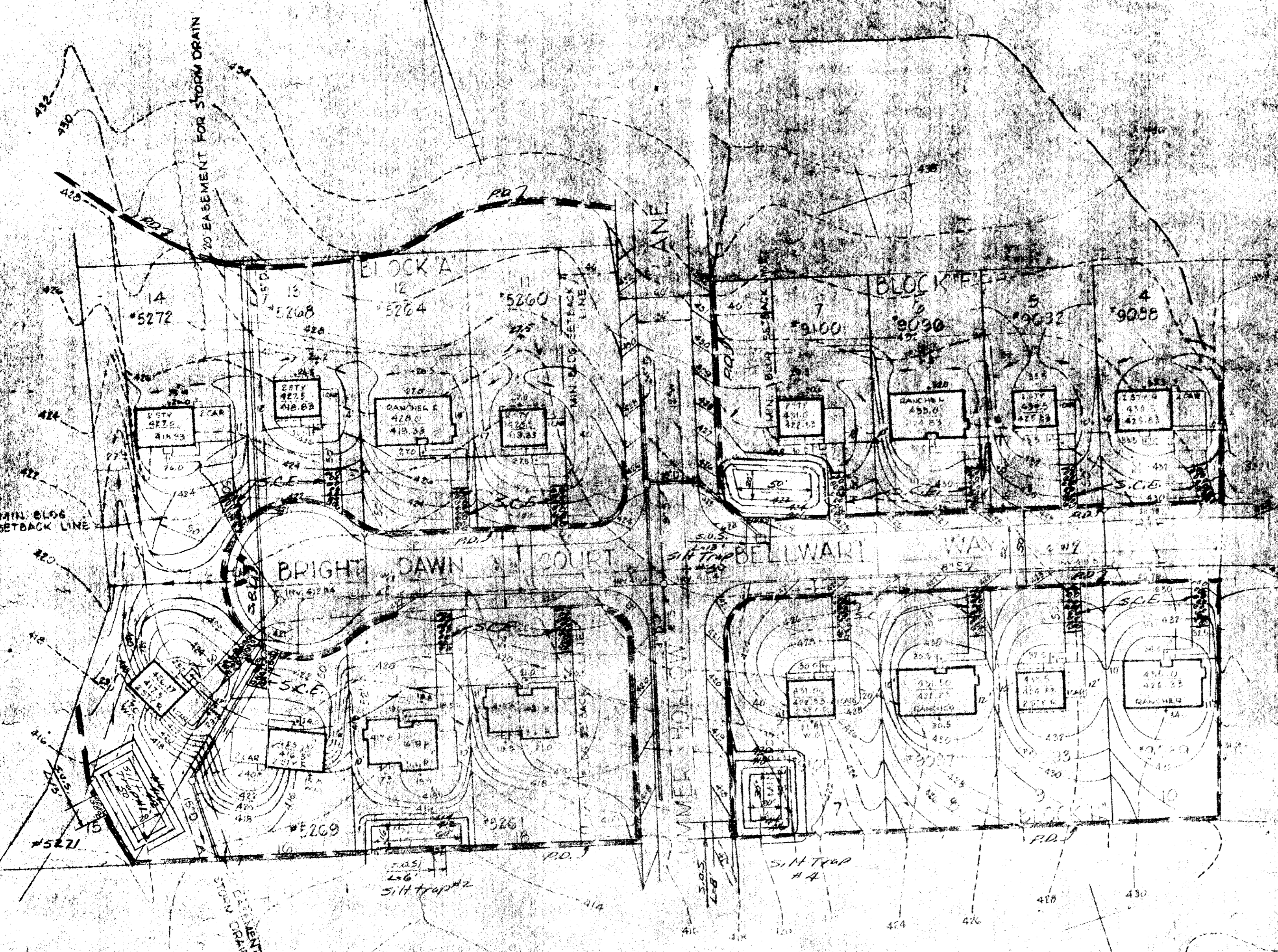


VICINITY MAP
SCALE: 1" = 2000'

- LEGEND:
- 412- EXISTING GROUND ELEV.
 - 410- PROPOSED GRADE
 - RD. PERIMETER DIKE (RD.)
 - STONE OUTLET STRUCTURE (S.O.S.)
 - STABILIZED CONSTRUCTION ENTRANCE (S.C.E.)



Detail Stone Outlet Structure (S.O.S.)
NO SCALE



SILT TRAP DESIGN DATA.

SILT TRAP NO.	DRAINAGE AREA	STORAGE DEPTH	STORAGE VOLUME	CATCHER SIZE	CLEANOUT SIZE
#1	2.1 AC	14" x 4"	148 cu ft	412.0	414.0
#2	1.4 AC	6" x 4"	70 cu ft	412.0	413.0
#3	2.1 AC	14" x 4"	148 cu ft	412.0	414.0
#4	1.2 AC	6" x 4"	63 cu ft	414.0	416.0

SEQUENCE OF OPERATION

1. HOWARD COUNTY BUREAU OF LICENSES, INSPECTIONS & PERMITS TO BE NOTIFIED 24 HRS IN ADVANCE OF ANY CONSTRUCTION START. MAR '77
2. CONSTRUCT & STABILIZE ALL SEDIMENT CONTROL MEASURES. MAR '77
3. CLEARING & EOUGH GRADE SITE. APR '77
4. CONSTRUCTION OF HOUSES & UTILITIES. APR-SEPT '77
5. FINAL GRADING & STABILIZATION OF DISTURBED AREAS. SEPT '77
6. MAINTENANCE IMMEDIATELY UPON COMPLETION.
7. REMOVE TEMP SEDIMENT CONTROL MEASURES AFTER OBTAINING PERMITS APPROVAL & STABILIZE THESE DISTURBED AREAS. OCT '77

SEDIMENT CONTROL NOTES

1. ALL SEDIMENT CONTROL MEASURES TO BE CONSTRUCTED ACCORDING TO THE STANDARDS & SPECIFICATIONS FOR SOIL EROSION & SEDIMENT CONTROL IN DEVELOPING AREAS.
2. FOLLOW SEQUENCE OF OPERATION ABOVE
3. CONTRACTOR TO DIRECT ALL SURFACE RUNOFF TO RD., S.C.E. & SILT TRAPS & NO SILT TO BE ALLOWED TO ENTER STREET R/W OR LEAVE PROPERTY.
4. CONTRIBUTING AREA TO EACH S.C.E. IS LESS THAN 0.6 AC.
5. CONTRACTOR TO INSPECT ALL SEDIMENT CONTROL MEASURES AT LEAST WEEKLY & AFTER EACH RAIN STAKE ANY NECESSARY REPAIRS & OR REPLACE MENTS AS REQUIRED.
6. ALL DISTURBED AREAS TO BE SEED AS FOLLOWING:
PERM. SEED.
CLEANING RED FESCUE (SDM) & CERTIFIED KENTUCKY BLUE GRASS (SDM) @ 120#/AC. MIXED W/ WHEAT STRAW & ASPHALT TO DOWN PREPARE SURFACE.
GROUND LIMESTONE @ 2 TONS/AC
COMMERCIAL FERTILIZER (10-10-10) @ 34 TONS/AC.
SUPERPHOSPHATE @ 600#/AC.
MIXED WITH SMALL GRAIN STRAW @ 10 TONS/AC W/ WHEAT STRAW
7. REMOVAL OF ANY SEDIMENT CONTROL MEASURE ONLY WITH APPROVAL FROM HOWARD COUNTY INSPECTOR & ONLY AFTER SITE STABILIZED ACCORDING TO NOTE #6 ABOVE.

- SITE DATA:
1. TAX MAP 30 PARCEL 75.
 2. EXISTING ZONING - R-12
 3. TOTAL SITE AREA - 6.45 AC. STREETS INCLUDED
 4. DISTURBED AREA - 5.4 ACS.
 5. IMPERVIOUS AREA - 2.0 AC ±
 6. VEGETATIVELY STABILIZED - 4.45 AC ±

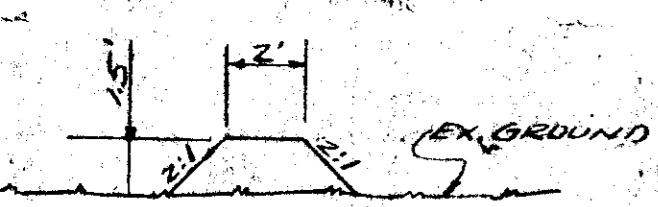
APPROVED: For Public Water & Public Sewerage Systems, Howard County Health Department
Joseph M. Boyle 4-21-77
County Health Officer Date

APPROVED: Howard County Office of Planning & Zoning
Thomas L. Harris 5-3-77
Planning Director Date

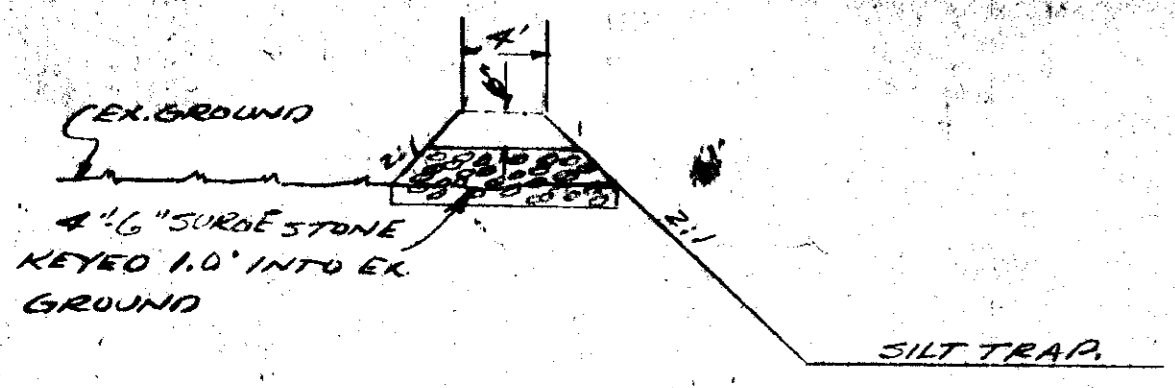
John W. Muesel 4-29-77
Chief, Division of Land Development Date

APPROVED: For Public Water, Public Sewerage & Storm Drainage System & Roads
Howard County Department of Public Works
P.J. Reagan 4-26-77
Director Date

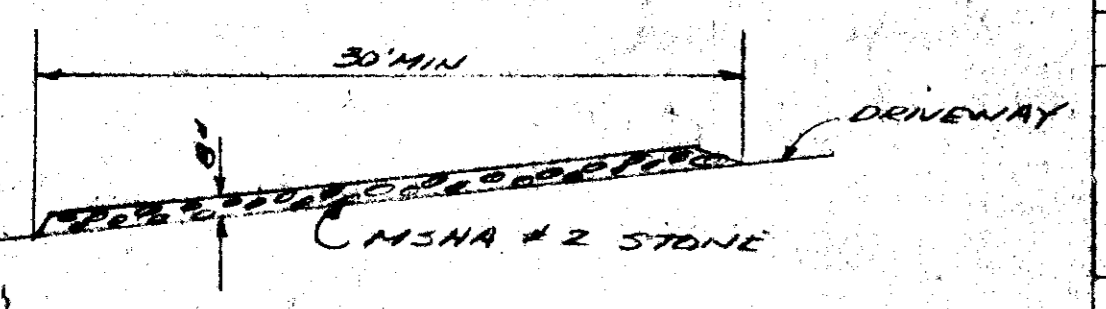
Granville M. Heiland 4-26-77
Chief, Bureau of Highways Date



DETAIL PERIMETER DIKE (RD)
NO SCALE



DETAIL TYPICAL SILT TRAP & STONE OUTLET STRUCTURE (S.O.S.)
NO SCALE



DETAIL STABILIZED CONSTRUCTION ENTRANCE (S.C.E.)
NO SCALE

SEDIMENT CONTROL & SITE DEVELOPMENT PLAN

GLENNMONT

SECTION I AREA I
LOTS 118, 119, 120 BLOCK 'A'
LOTS 121, 122, 123 BLOCK 'F'
LOTS 124, 125, 126 BLOCK 'H'

ELECTION DISTRICT GULFORD NO. 6 HOWARD COUNTY, MD.
SCALE: 1" = 50' FEBRUARY 2, 1977

8. TEMP. SEEDING:
2 1/2 BU. RYE @ 32 LBS PER 1000'
USE CERTIFIED SEED.

4-5-77
[Signature]

MCA ENGINEERING CORP.
1020 CROMWELL BRIDGE RD.
TOWSON, MD 21286