

SEDIMENT CONTROL NOTES

1. THE N.E.C.D. AND BUREAU OF LICENSE, INSPECTION & PERMITS WILL BE GIVEN 24 HRS. PRIOR TO ANY GRADING.
2. ALL SEDIMENT CONTROL STRUCTURES SHOWN ON THIS PLAN, UNLESS OTHERWISE SPECIFIED, WILL BE INSTALLED AND STABILIZED IN ACCORDANCE WITH NOTE #8 PRIOR TO ANY OTHER GRADING OR EARTH DISTURBANCE ON THIS SITE.
3. AS SOON AS EARTH GRADING IS COMPLETED, AREA TO BE STABILIZED WITH BASE MATERIAL, AND WILL BE SEEDED.
4. ALL CUT & FILL SLOPES WILL BE A MAXIMUM OF 2:1.
5. FOLLOWING THE STABILIZATION OF ALL AREAS, UPGRADE THE AREA OF THE SEDIMENT CONTROL MEASURES MAY BE REMOVED AND GRADED TO THE FINAL GRADES PLANNED & STABILIZED IMMEDIATELY.
6. ALL EXCESS CUT WILL BE TRUCKED TO APPROVED DISPOSAL SITE.
7. SEDIMENT CONTROL MEASURES WILL NOT BE REMOVED UNTIL APPROVAL IS OBTAINED FROM THE N.E.C.D.
8. **TEMPORARY STABILIZATION**
APPLY: 2000 LBS./ACRE OR 46 LBS./50 FT. OF PULVERIZED DOLOMITIC LIMESTONE.
300 LBS./ACRE OR 125 LBS./1000 FT² OF 10-10-10 FERTILIZER PLANT TO KENTUCKY BLUEGRASS (340 LBS./ACRE FERTILIZE WITH 10-10-10 & MULCH WITH STRAW @ 1/2 TONS/ACRE).
9. **PERMANENT STABILIZATION**
APPLY: 2000 LBS./ACRE OF PULVERIZED DOLOMITIC LIMESTONE.
700 LBS./ACRE OF 0-200 SUPER PHOSPHATE.
1000 LBS./ACRE OF 10-10-10 FERTILIZER.
SEED: 85 LBS./ACRE OF KENTUCKY 31 TALL FESCUE.
40 LBS./ACRE OF KENTUCKY BLUEGRASS.
25 LBS./ACRE OF ANNUAL BLUEGRASS.
NOTE: SEEDING MAY BE DONE BETWEEN MARCH-1, MAY 1, OR AUGUST 1 - OCTOBER 1 ONLY.
MULCH: 2 TONS/ACRE OF UNWEATHERED WHEATSTRAW, TIE MULCH DOWN WITH 480 GAL/ACRE OF LIQUID ASPHALT.

REVIEWED FOR HOWARD SOIL CONSERVATION DISTRICT AND MEETS TECHNICAL REQUIREMENTS.

Walter S. Smith 2-24-77
U.S. SOIL CONSERVATION SERVICE DATE

THIS DEVELOPMENT PLAN IS APPROVED FOR SOIL EROSION AND SEDIMENT CONTROL BY THE HOWARD SOIL CONSERVATION DISTRICT

APPROVED: Robert J. Zelman 2-24-77
HOWARD SOIL CONSERVATION DIST. DATE

BY THE DEVELOPER:
I CERTIFY THAT ALL DEVELOPMENT AND/OR CONSTRUCTION WILL BE ACCORDING TO THIS PLAN OF DEVELOPMENT AND PLAN FOR EROSION AND SEDIMENT CONTROL, AND I ALSO AUTHORIZE PERIODIC ON-SITE INSPECTION BY THE HOWARD SOIL CONSERVATION DIST. OR THEIR AUTHORIZED AGENTS, AS ARE DEEMED NECESSARY. DEVIATION FROM THIS PLAN WILL NOT BE MADE UNLESS AUTHORIZED BY THE HOWARD SOIL CONSERVATION DISTRICT.

WEST FRIENDSHIP VOL. FIRE DEPT. INC. 12/23/77
DATE

BY THE ENGINEER:
I CERTIFY THAT THIS PLAN FOR EROSION AND SEDIMENT CONTROL REPRESENTS A PRACTICAL AND WORKABLE PLAN BASED ON MY PERSONAL KNOWLEDGE OF THE SITE CONDITIONS AND THAT IT WAS PREPARED IN ACCORDANCE WITH THE REQUIREMENTS OF THE SOIL CONSERVATION DISTRICT.

John L. Schneider 3/18/77
ENGINEER DATE



CONSTRUCTION SEQUENCE

1. CONSTRUCT ALL TEMPORARY SEDIMENT CONTROL DEVICES (TRM STONE, CONSTRUCTION ENTRANCE, STRAW BALE BARRIERS, ETC.)
2. EXCAVATE FOR NEW CONSTRUCTION.
3. PLACE TEMPORARY STABILIZATION IF REQUIRED IN DISTURBED AREAS.
4. CONSTRUCT NEW PORTION OF FIRE HOUSE.
5. COMPLETE FINAL GRADING AND PAVE TO FIN. GRADE, WHERE REQ'D.
6. REMOVE TEMP. SED. CONTROL DEVICES & STABILIZE AREA IF DISTURBED.
7. FILL SEEPAGE WITH GRANULAR MATERIAL.

APPROVED: FOR PRIVATE WATER AND PRIVATE SEWAGE SYSTEMS
HOWARD COUNTY HEALTH DEPARTMENT

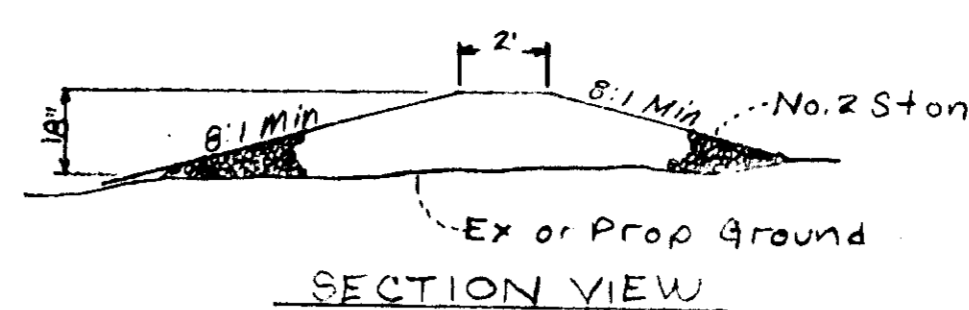
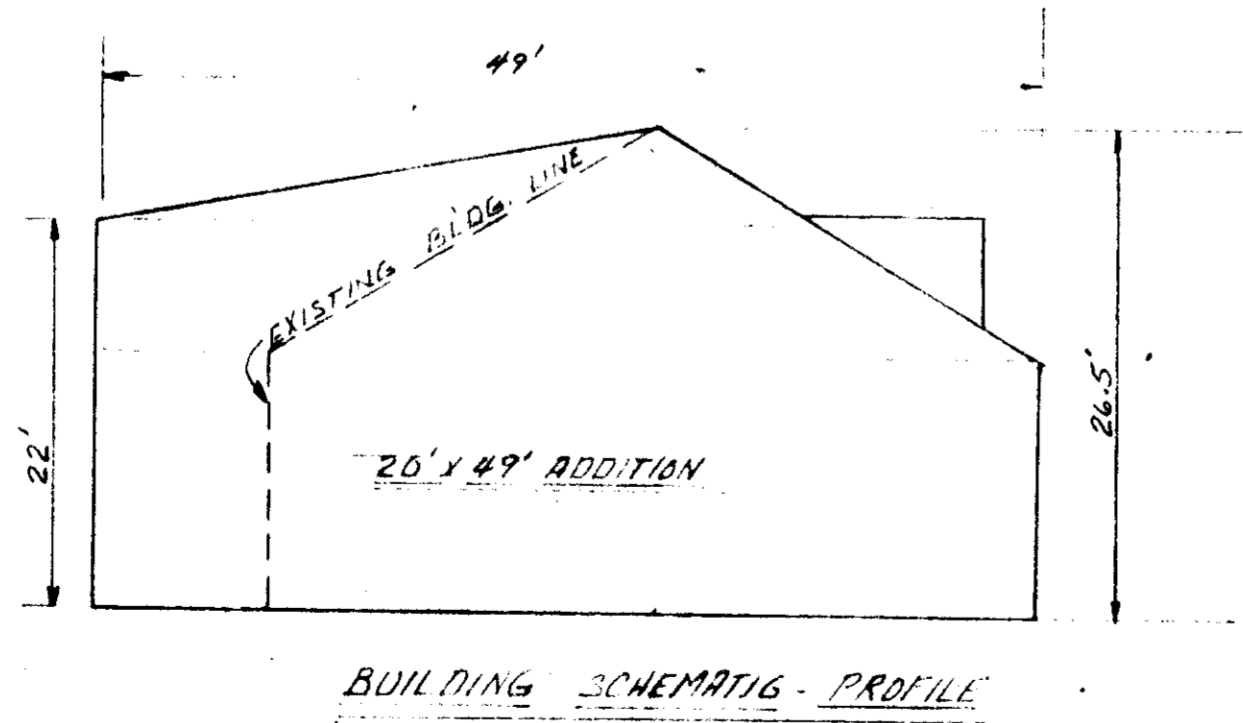
Joyce M. Boyd 3-18-77
JOYCE HEALTY OFFICER DATE

APPROVED: HOWARD COUNTY OFFICE OF PLANNING AND ZONING
Thomas J. Harris 3-22-77
PLANNING DIRECTOR DATE

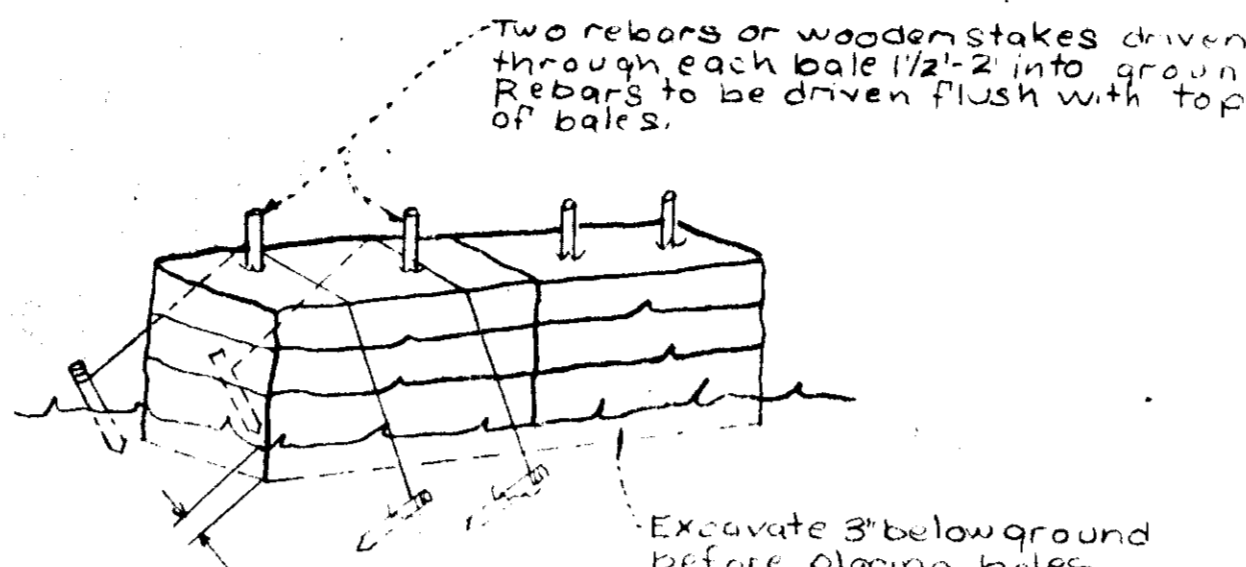
Bill Massey 3-18-77
CHIEF, DIV. OF LAND DEVELOPMENT DATE

APPROVED: FOR STORM DRAINAGE SYSTEMS AND ROADS
P. J. Regan 3-21-77
DIRECTOR OF PUBLIC WORKS DATE

Donna M. Weiland 3/21/77
SHEET, BUREAU OF HIGHWAYS DATE



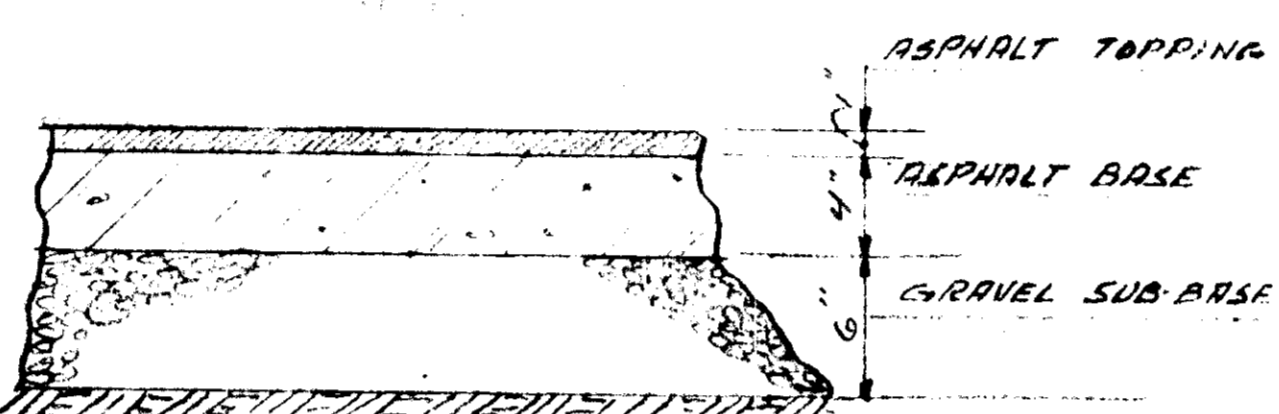
STONE CONSTRUCTION ENTRANCE DETAIL
No Scale



All bales shall be tied with non-weathering material, i.e. wire, nylon.

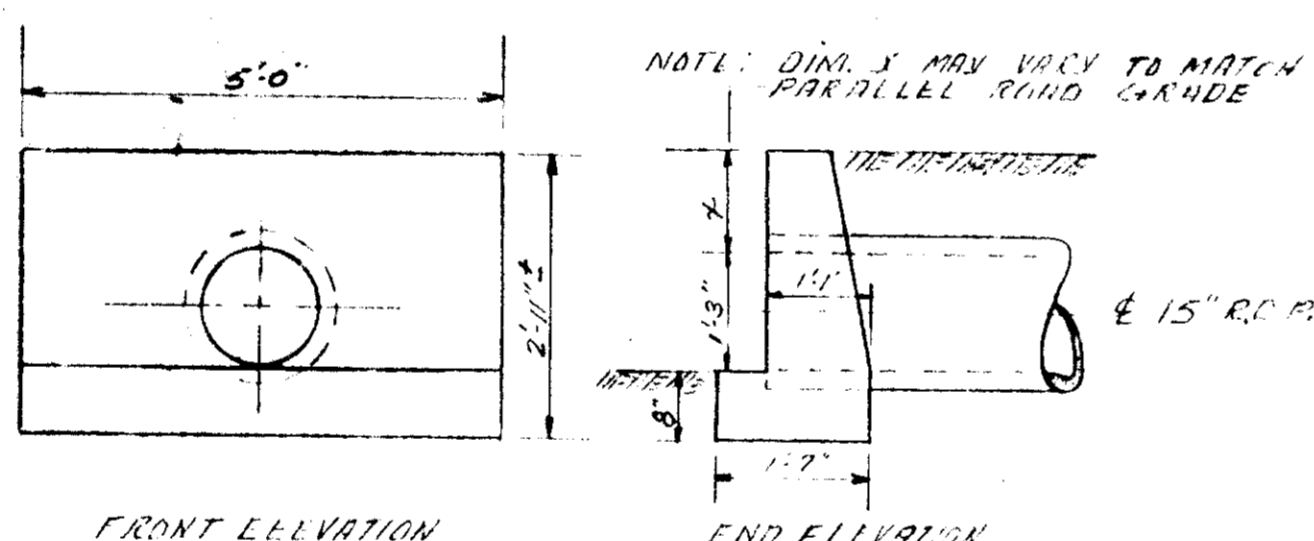
NOTE: In lieu of the use of rebar, each straw bale may be fastened to ground with pegs (4 per bale and wire or nylon as shown above)

TYPICAL STRAW BALE DETAIL
No Scale



TYPICAL PAVING SECTION
SCALE: 1/4" = 1'-0"

Howard County Road Code & Standard Specifications

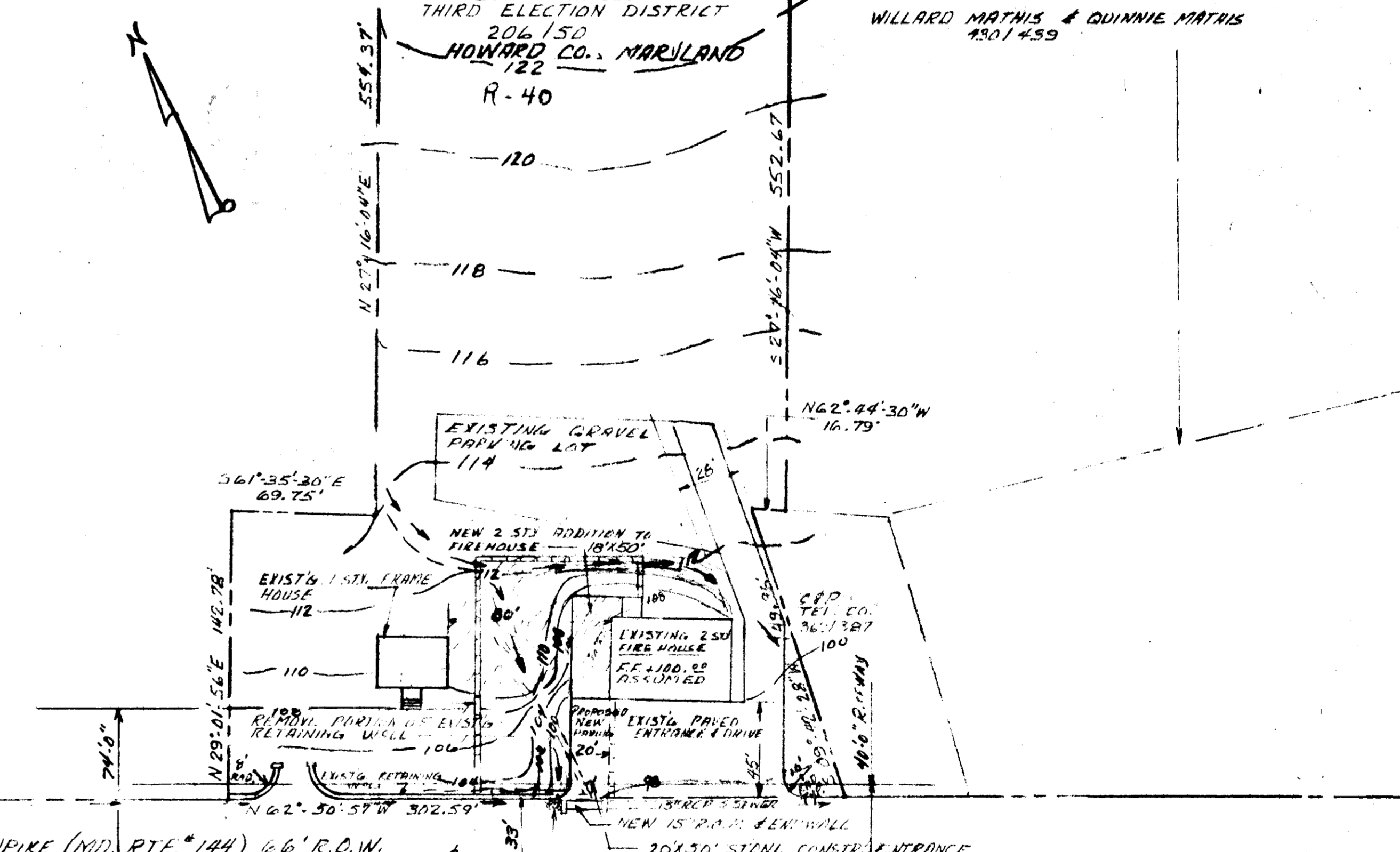


END WALL DETAIL
SCALE: 1/4" = 1'-0"

HOWARD COUNTY BOARD OF EDUCATION
17.8528 ACRES

WEST FRIENDSHIP VOLUNTEER FIREMEN'S ASSOC. INC.
3.4474 ACRES
THIRD ELECTION DISTRICT
206150
HOWARD CO., MARYLAND
122
R-40

WILLARD MATHEIS & QUINNIE MATHEIS
#301459

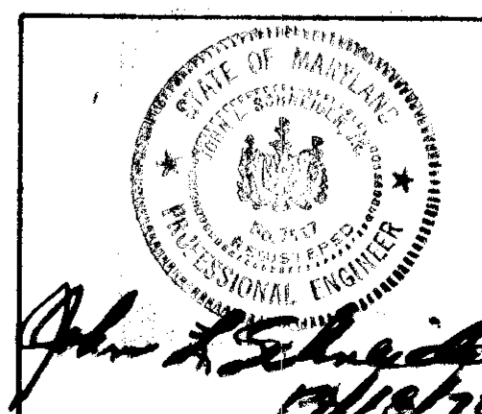


BALTIMORE-FREDERICK TURNPIKE (MD. RTE. #144) 66' R.O.W.

SITE ANALYSIS:

TOTAL ACRES: 3.4474 Ac
TOTAL DISTURBED: 2,800 Sq. FT.
AREA UNDISTURBED: 2,623 Ac.

APPROVED
DIVISION OF LAND DEVELOPMENT
HOWARD COUNTY, MARYLAND
DATE: 3-1-77



ROYCE C. FITZGERALD
ENGINEERING TECH. SERVICES

TAX MAP # 15 ELECTRIC DIST. 3
SITE PLAN BLDG ADDITION
WEST FRIENDSHIP VOL. FIRE DEPT.
12460 FREDERICK RD. WEST FRIENDSHIP, MD.
DRAWN: R.C.F. SCALE: 1" = 50'
DATE: OCT. 20, 1976 SH.# 1001