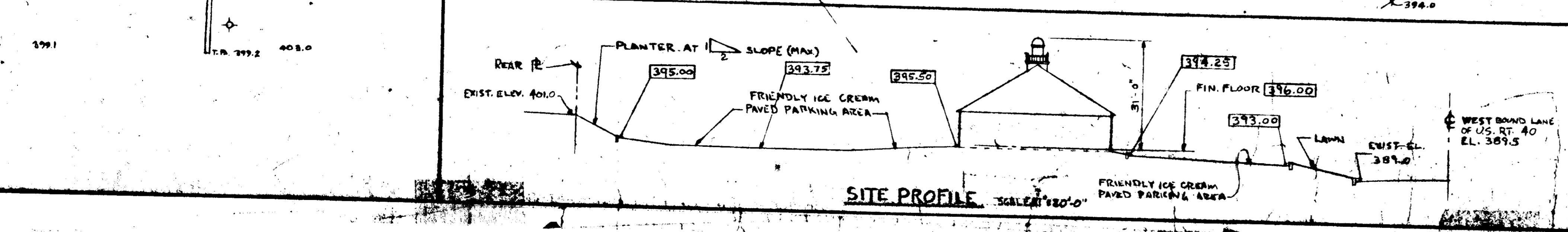
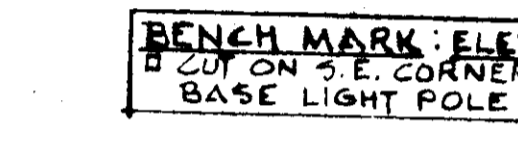
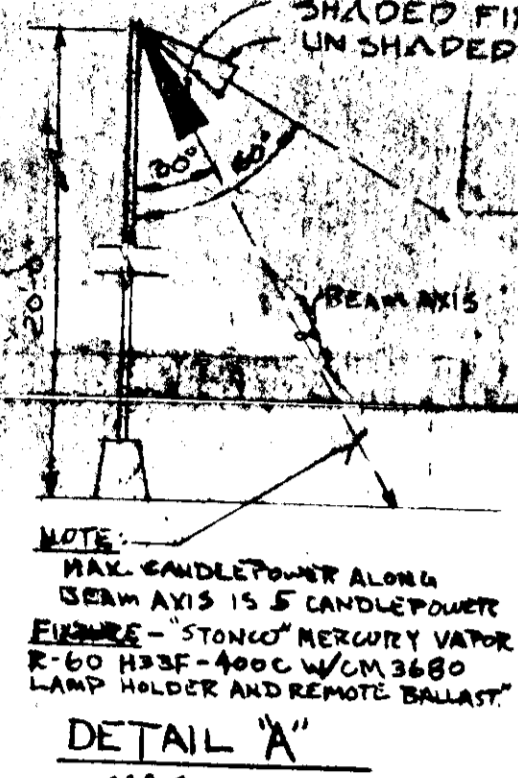
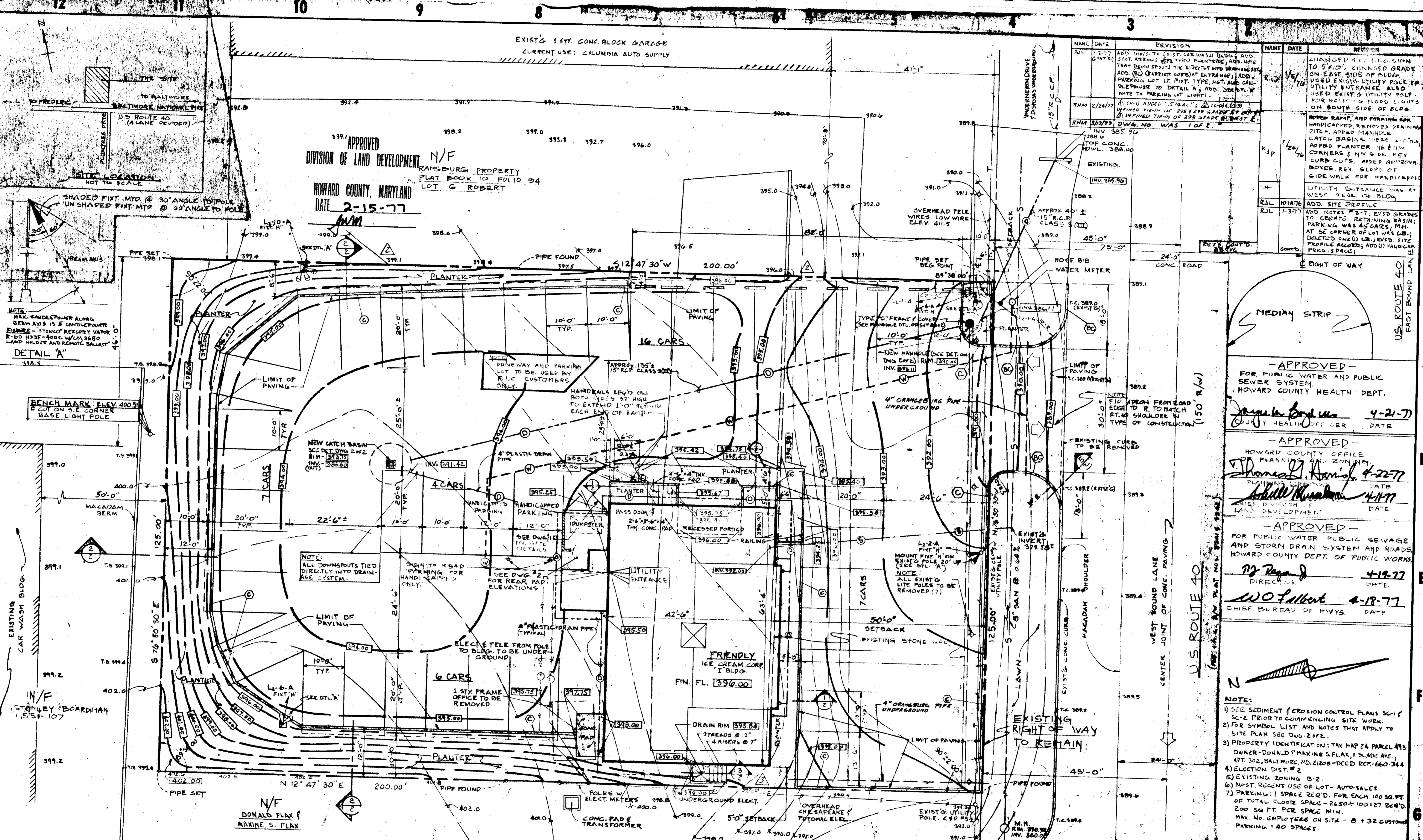


APPROVED
DIVISION OF LAND DEVELOPMENT N/F
HOWARD COUNTY, MARYLAND
DATE 2-15-77

RANSBURG PROPERTY
PLAT BOOK 10 FOLIO 94
LOT 6 ROBERT

EXIST'G 1 STY CONC. BLOCK GARAGE
CURRENT USE: COLUMBIA AUTO SUPPLY

NAME	DATE	REVISION	NAME	DATE	REVISION
RJM	1-17-77	ADD. DIMS. TO EXIST. CAR WASH BLDG. ADD. SECT. ARROWS TO THRU PLANTERS, ADD. NOTE THAT DOWN SPOUTS TO BE DIRECTLY INTO DRAINAGE.	RJM	1-17-77	CHANGED ALL F.I.C. SIGN ON EAST SIDE OF BLDG. USED EXIST. UTILITY POLE TO UTILITY ENTRANCE. ALSO USED EXIST. UTILITY POLE FOR NORTH SIDE FLOOD LIGHTS ON SOUTH SIDE OF BLDG.
RJM	2/24/77	(M) ADDED "STGA." (C) CHANGED DEFINED TIE-IN OF 395.139 GADBY AT DRIVE. (D) DEFINED TIE-IN OF 395 GRADE @ WEST E.	RJM	3/17/77	DWG. NO. WAS 10 F.F.
RJM	3/17/77	INVT. 385.96	RJM	4/24/76	ADDED RAMP, AND PARKING FOR HANDICAPPED. REMOVED DRAINAGE TIE-IN. ADDED MANHOLE CATCH BASINS. SEE F.I.C. PLAN. ADDED PLANTER. HEAVY CURB CUTS. ADDED APPROVAL BOXES REV. SLOPE OF SIDE WALK FOR HANDICAPPED. UTILITY ENTRANCE WAS AT WEST SEAL OF BLDG.
RJM	10/14/76	ADD. SITE PROFILE	RJM	1-31-77	ADD. NOTES #3-7, EVID GRADINGS TO CREATE RETAINING BASIN. PARKING WAS 45 CARS, MIN. AT SE CORNER OF LOT WAS 60; SITE PROFILE ALSO ADDED HANDICAP PARKING SPACES.



APPROVED FOR PUBLIC WATER AND PUBLIC SEWER SYSTEM. HOWARD COUNTY HEALTH DEPT.
J. J. Bond 4-21-77
COUNTY HEALTH OFFICER DATE

APPROVED HOWARD COUNTY OFFICE PLANNING AND ZONING
Thomas J. Davis 4-22-77
William Thurman 4-11-77
PLANNING DIRECTOR DATE
CHIEF DIVISION OF LAND DEVELOPMENT DATE

APPROVED FOR PUBLIC WATER, PUBLIC SEWAGE AND STORM DRAIN SYSTEM AND ROADS. HOWARD COUNTY DEPT. OF PUBLIC WORKS
W. J. Regan 4-19-77
W. O. Lambert 4-18-77
DIRECTOR DATE
CHIEF, BUREAU OF H.V.V.S. DATE

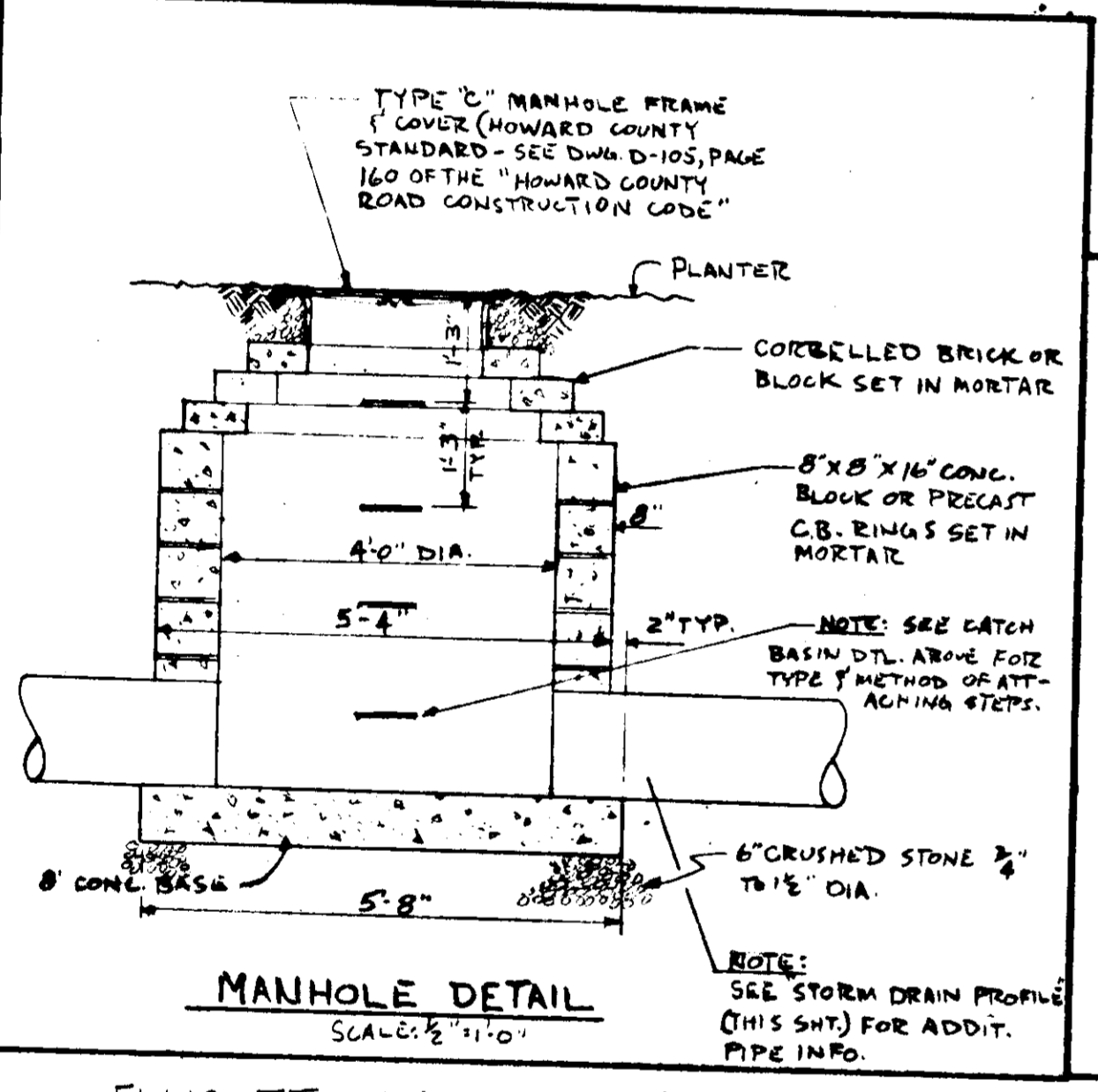
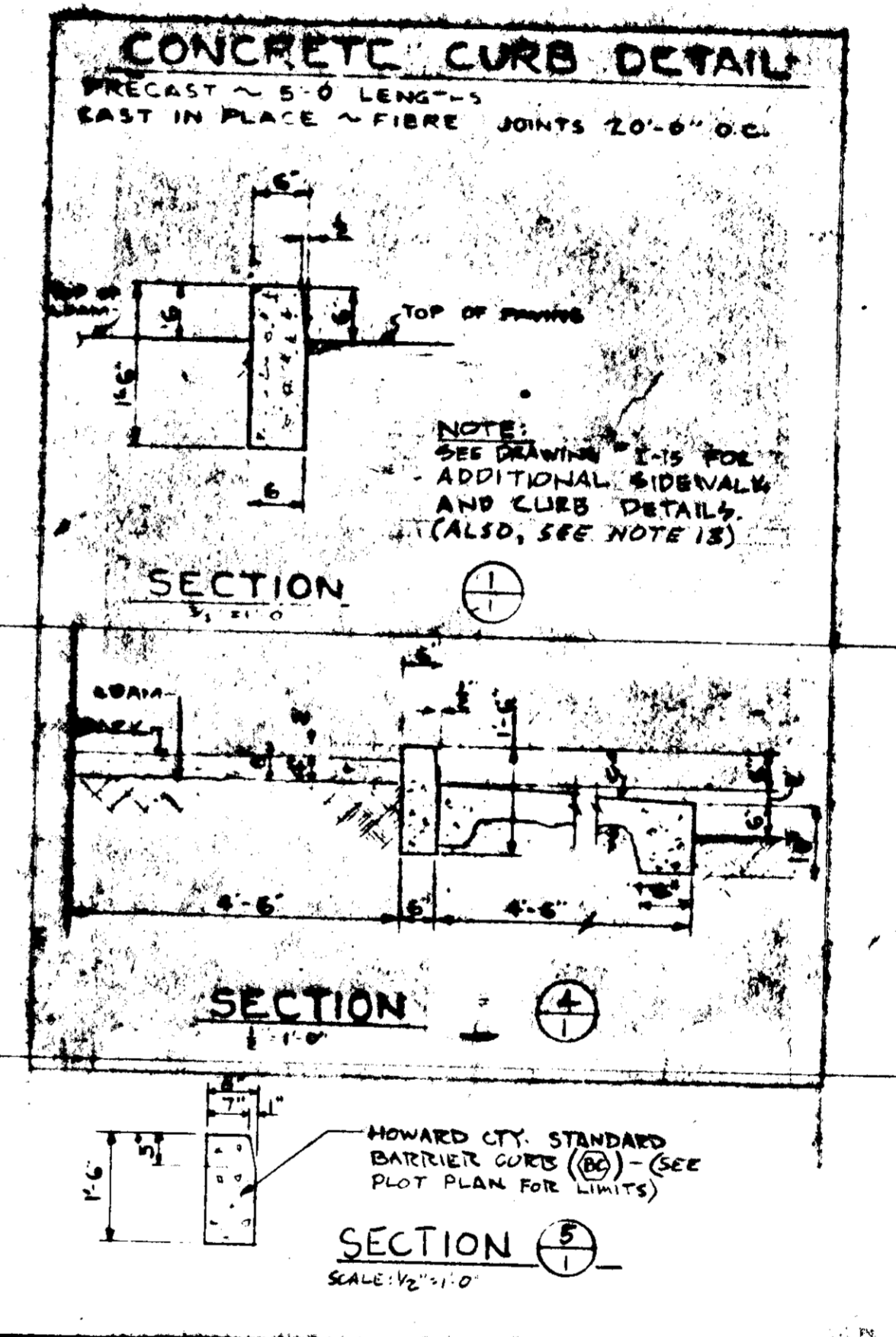
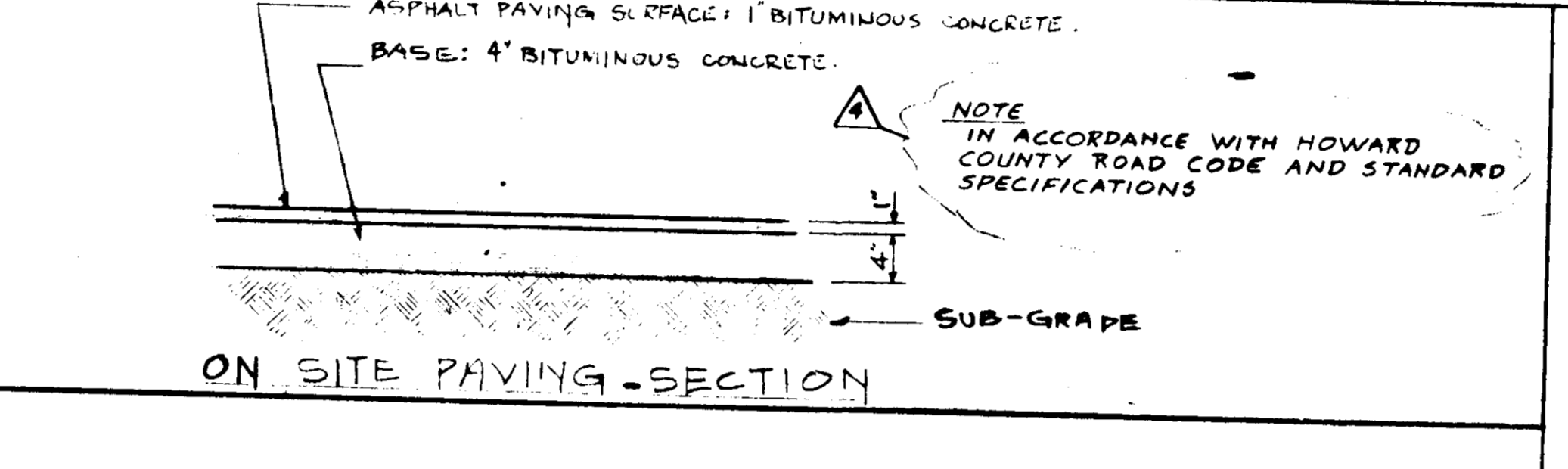
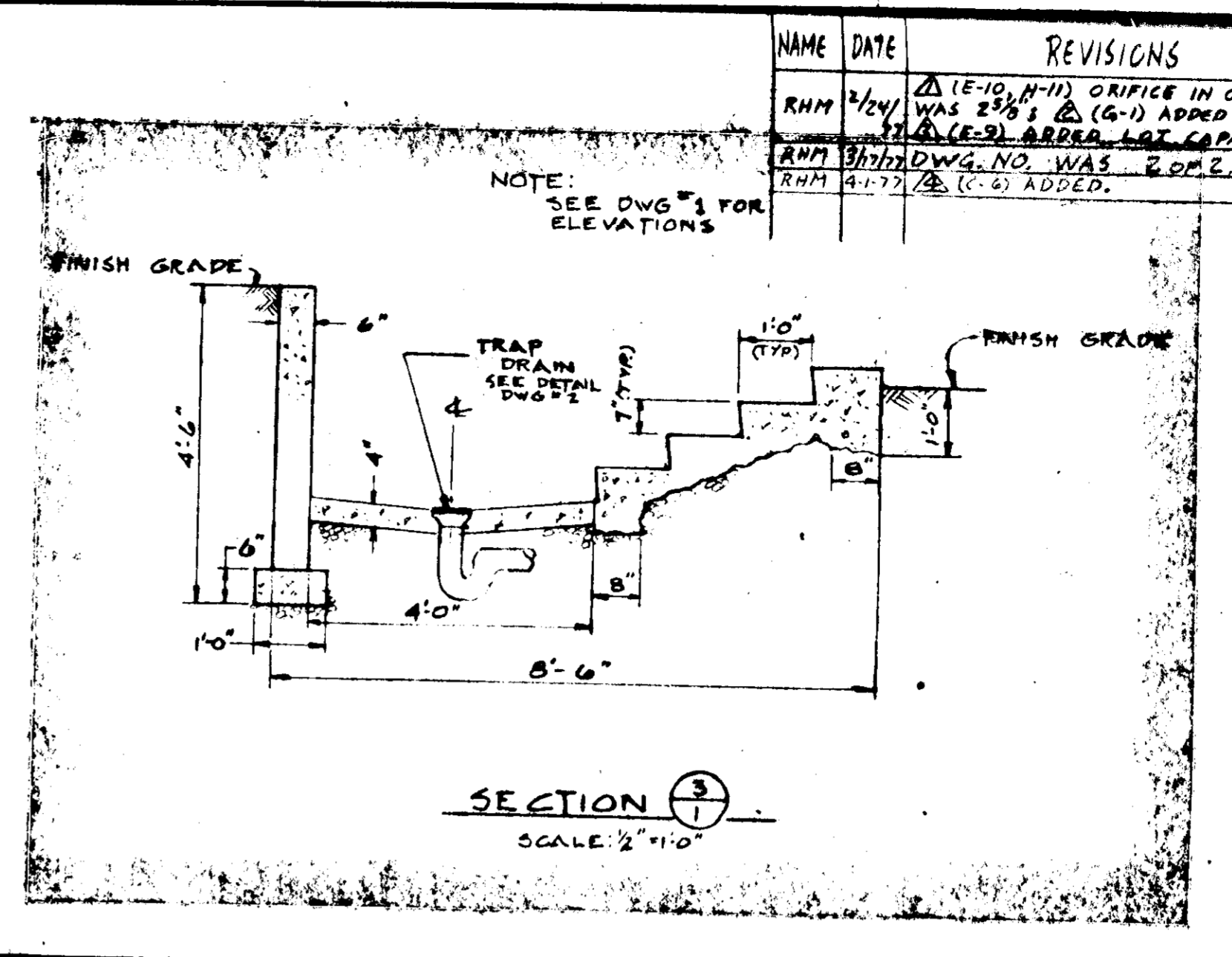
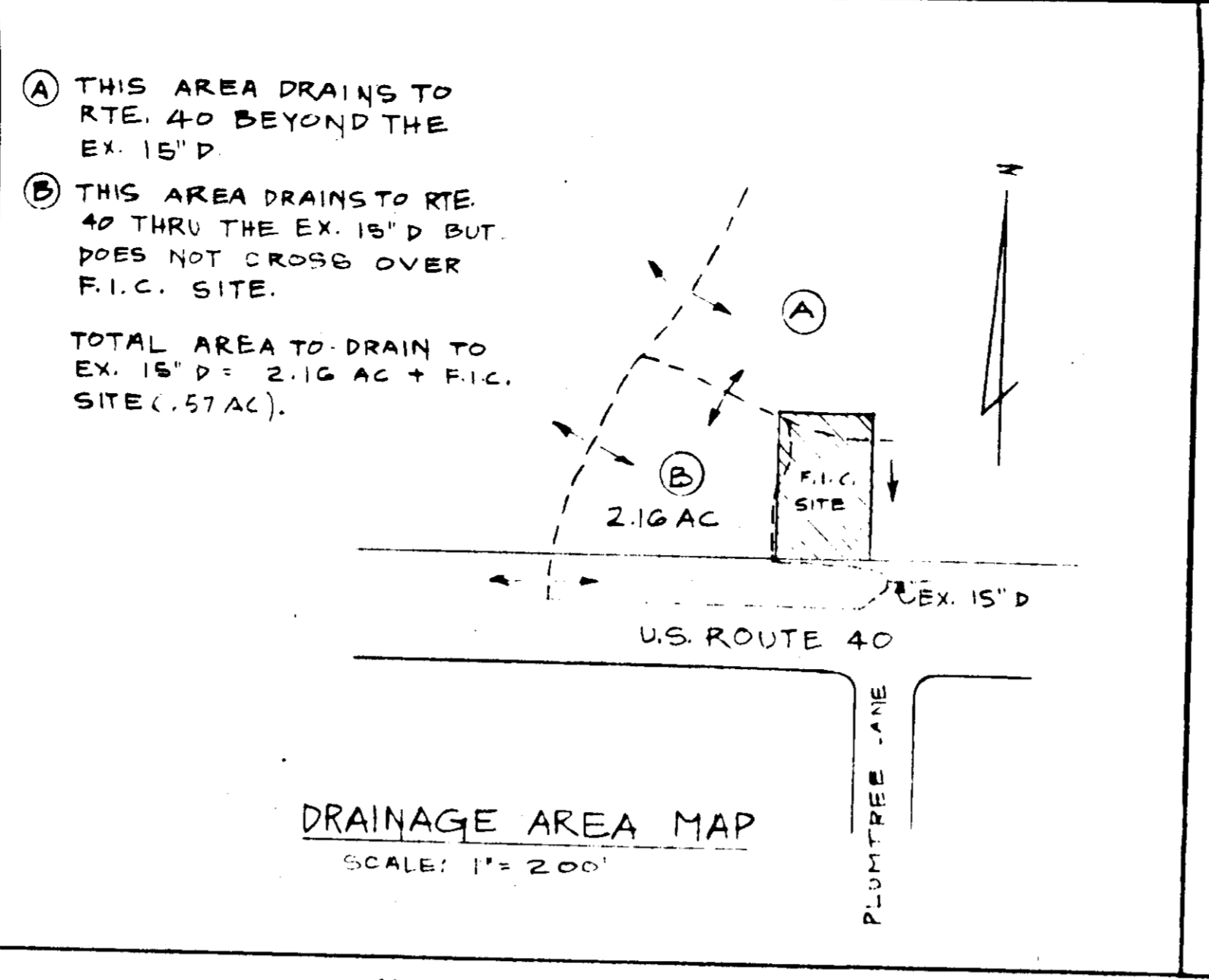
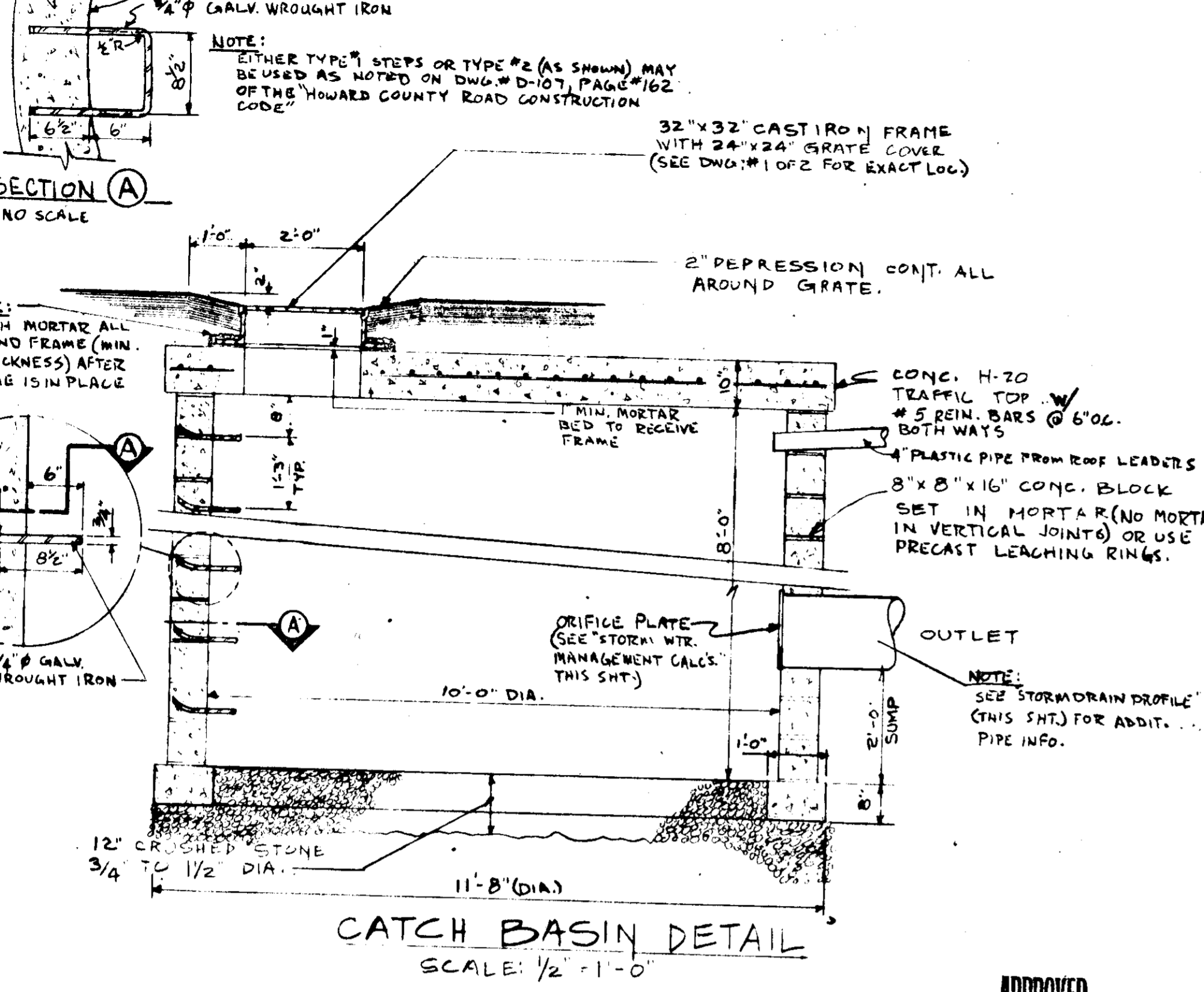
NOTE:
1) SEE SEDIMENT EROSION CONTROL PLANS SCH. 1 SC-2 PRIOR TO COMMENCING SITE WORK.
2) FOR SYMBOL LIST AND NOTES THAT APPLY TO SITE PLAN SEE DWG. 2 OF 2.
3) PROPERTY IDENTIFICATION: TAX MAP 24 PARCEL 493 OWNER-DONALD F. MAXINE S. FLAX, 1 SLADE AVE., APT. 302, BALTIMORE, MD. 21208-DEED REF. 660-344
4) ELECTION DIST. # 2
5) EXISTING ZONING: B-2
6) MOST RECENT USE OF LOT: AUTO SALES
7) PARKING: 1 SPACE REQ'D. FOR EACH 100 SQ. FT. OF TOTAL FLOOR SPACE - 2650 ± 100 ± 27 REAR 200 SQ. FT. PER SPACE MIN. MAX. NO. EMPLOYEES ON SITE - 8 + 32 CUSTOMER PARKING - 40 SPACES.

YARD REQUIREMENTS		TOTAL AREA
FRONT	50'	BUILDING 2,650 FT ²
SIDE	0	PLOT 25,003 FT ² (574 AL)
REAR	0	TOTAL PARKING 40 CARS

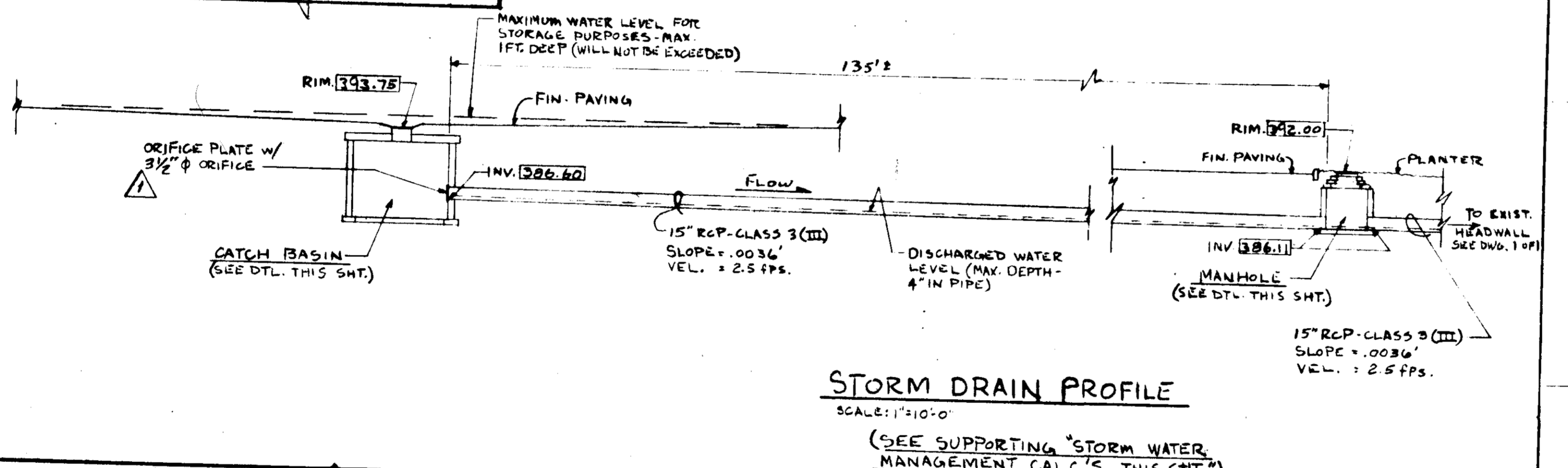
Friendly ICE CREAM CORPORATION
WILBRAHAM, MASSACHUSETTS 01095
INCORPORATED BY CHARTER
TEL. 418-834-8400

9398 U.S. ROUTE 40
ELLCOTT CITY, MD.
PLOT PLAN

STATE OF MARYLAND
PROFESSIONAL ENGINEER
Byrd A. Howard
4/77



APPROVED
DIVISION OF LAND DEVELOPMENT
HOWARD COUNTY, MARYLAND
DATE: 2-15-77
ANM



ELLCOTT CITY, MD. - STORMWATER MANAGEMENT (TOTAL LOT STORAGE CAPACITY = 3,390 ft³)

VOLUME OF WATER TO BE RELEASED AFTER DEVELOPMENT (BASED ON 10 YR. 30 MIN. STORM) = 3000 ft³

RELEASE RATE EQUAL TO 2 YR. STORM ON UNDEVELOPED PROPERTY 5 MIN. TIME OF CONCENTRATION.

VOLUME OF WATER IN 30 MIN. = 3000 ft³

VOLUME OF WATER RELEASED IN 30 MIN. = 1548 ft³

NET STORAGE REQ'D = 1452 ft³

USE 10'-0" DIA. C.B. WITH 2'-0" DEEP DRYWELL SUMP. (SEE "CATCH BASIN DETAIL" / STORM DRAIN PROFILE" THIS SHT. FOR ADDIT. INFO.)

VOLUME OF STORM WATER STORED IN C.B. = 392.25 - EL. AT UNDERSIDE OF CONC. TOP = 384.60 - EL. AT BOT. OF SUMP = 7.65'

VOLUME = 78.54 ft³/FT. OF HGT. X 7.65' = 600.8 ft³

NET STORAGE ABOVE GRATE (ON PARKING LOT SURFACE) = 1452.0 - 600.8 = 851.2 ft³

DUE TO GRADING OF LOT 851.2 ft³ STORAGE ON PARKING LOT SURFACE WILL NOT BE DEEPER THAN 1 FT. THEREFORE MAXIMUM HEAD OVER OUTLET PIPE WILL BE 394.75 - 386.60 (LEAVING INV.) = 8.15'

COMPUTE ORIFICE PLATE WHICH WILL RESTRICT OUTLET AT MAXIMUM HEAD TO 2 YR. STORM OUTFLOW RATE

Q = 86 CFS (2 YR. STORM 5 MIN. T.L. UNDEVELOPED)

Q = CAYST (DISCHARGE THRU ORIFICE)

WHERE C = ORIFICE COEFF. = .98

Q = 32.2 ft³/SEC

Q = 8.15' MAX HEAD

86 = (98)(A)√(2.2)(8.15)

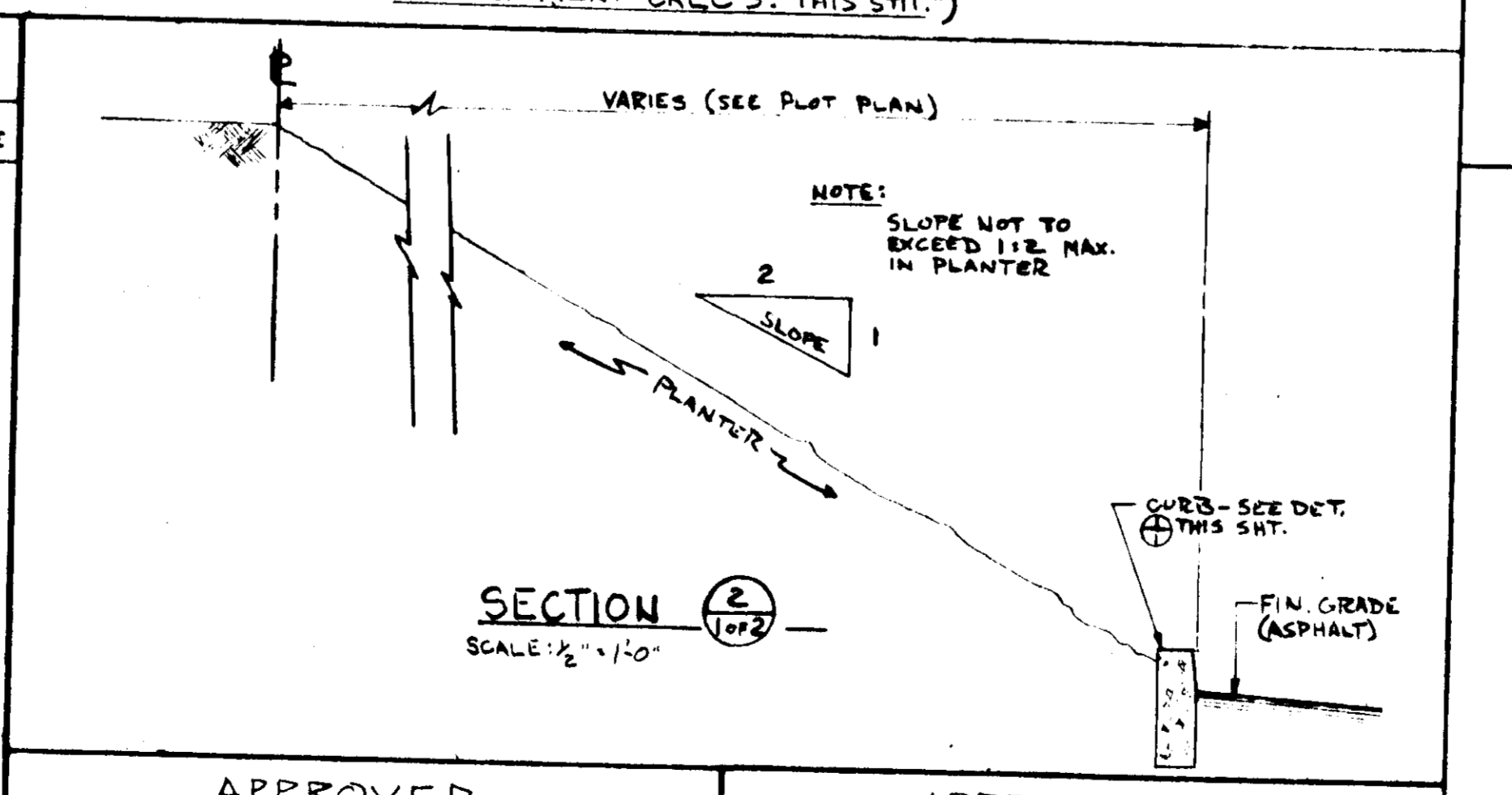
A = (.98)(A)√(22.91)

A = .0383 ft² = 5.512 sq. in.

D = 5.512

D = 2.65 IN. USE 3/2" Ø ORIFICE (PER DIV. OF LAND DEVELOPMENT LETTER OF LIGHT)

Q ₁₀	ΣQ ₁₀	Q ₂	ΣQ ₂	NET STORAGE
100	51.6	51.6	48.4	48.4
200	103.2	96.8	96.8	96.8
300	154.8	148.2	148.2	148.2
400	206.4	193.6	193.6	193.6
500	258.0	242.0	242.0	242.0
600	309.6	290.4	290.4	290.4
700	361.2	338.8	338.8	338.8
800	412.8	387.2	387.2	387.2
900	464.4	435.6	435.6	435.6
1000	516.0	484.0	484.0	484.0
1100	567.6	532.0	532.0	532.0
1200	619.2	580.8	580.8	580.8
1300	670.8	629.2	629.2	629.2
1400	722.4	677.6	677.6	677.6
1500	774.0	726.0	726.0	726.0
1600	825.6	774.4	774.4	774.4
1700	877.2	822.8	822.8	822.8
1800	928.8	871.2	871.2	871.2
1900	980.4	919.6	919.6	919.6
2000	1032.0	968.0	968.0	968.0
2100	1083.6	1016.4	1016.4	1016.4
2200	1135.2	1064.8	1064.8	1064.8
2300	1186.8	1113.2	1113.2	1113.2
2400	1238.4	1161.6	1161.6	1161.6
2500	1290.0	1210.0	1210.0	1210.0
2600	1341.6	1258.4	1258.4	1258.4
2700	1393.2	1306.8	1306.8	1306.8
2800	1444.8	1355.2	1355.2	1355.2
2900	1496.4	1403.6	1403.6	1403.6
3000	1548.0	1452.0	1452.0	1452.0



APPROVED
HOWARD COUNTY OFFICE
PLANNING AND ZONING
DATE: 4-22-77
DATE: 4-11-77

APPROVED
FOR PUBLIC WATER, PUBLIC SEWAGE AND STORM DRAIN SYSTEM AND ROADS.
HOWARD CTY. DEPT. OF PUBLIC WORKS.
DATE: 4-19-77
DATE: 4-18-77

APPROVED
FOR PUBLIC WATER & PUBLIC SEWER SYSTEM.
HOWARD COUNTY HEALTH DEPT.
DATE: 4-14-77

NAME	DATE	REVISION
K.J.P.	2-24-77	RE-DRAWN LAST REV. 11/17/76
K.J.P.	2-24-77	RE-DRAWN TO SCALE ON ELEVATIONS
K.J.P.	1-13-77	ADD. SECT. 3, 7, 8, 9, 10, 11, 12, 13, 14, 15, 16, 17, 18, 19, 20, 21, 22, 23, 24, 25, 26, 27, 28, 29, 30, 31, 32, 33, 34, 35, 36, 37, 38, 39, 40, 41, 42, 43, 44, 45, 46, 47, 48, 49, 50, 51, 52, 53, 54, 55, 56, 57, 58, 59, 60, 61, 62, 63, 64, 65, 66, 67, 68, 69, 70, 71, 72, 73, 74, 75, 76, 77, 78, 79, 80, 81, 82, 83, 84, 85, 86, 87, 88, 89, 90, 91, 92, 93, 94, 95, 96, 97, 98, 99, 100

REVISIONS CONTINUED ABOVE LEFT

SYMBOLS

1" T.C. PEDESTAL SIGN (SEE DETAIL DWG. #15)

FLOOD LIGHTS ON POLE (SEE DETAIL DWG. #15) (SEE DETAIL DWG. #15) (SEE DETAIL DWG. #15)

6" X 6" X 6" HIGH CONC. CURB (SEE DETAIL DWG. #15) (SEE DETAIL DWG. #15) (SEE DETAIL DWG. #15)

8" X 8" X 16" HIGH CONC. BUMPER (SEE DETAIL DWG. #15)

HOWARD CTY. STANDARD BARRIER CURB (SEE DET. THIS SHT.)

LEGEND

990.0 - EXIST'G GRADES

150.00 - NEW GRADES

5 - EXIST'G SEWER LINE

6 - NEW SEWER LINE

7 - EXIST'G WATER LINE

8 - NEW WATER LINE

9 - EXIST'G DRAIN LINE

10 - NEW DRAIN LINE

11 - EXIST'G TELE. LINE

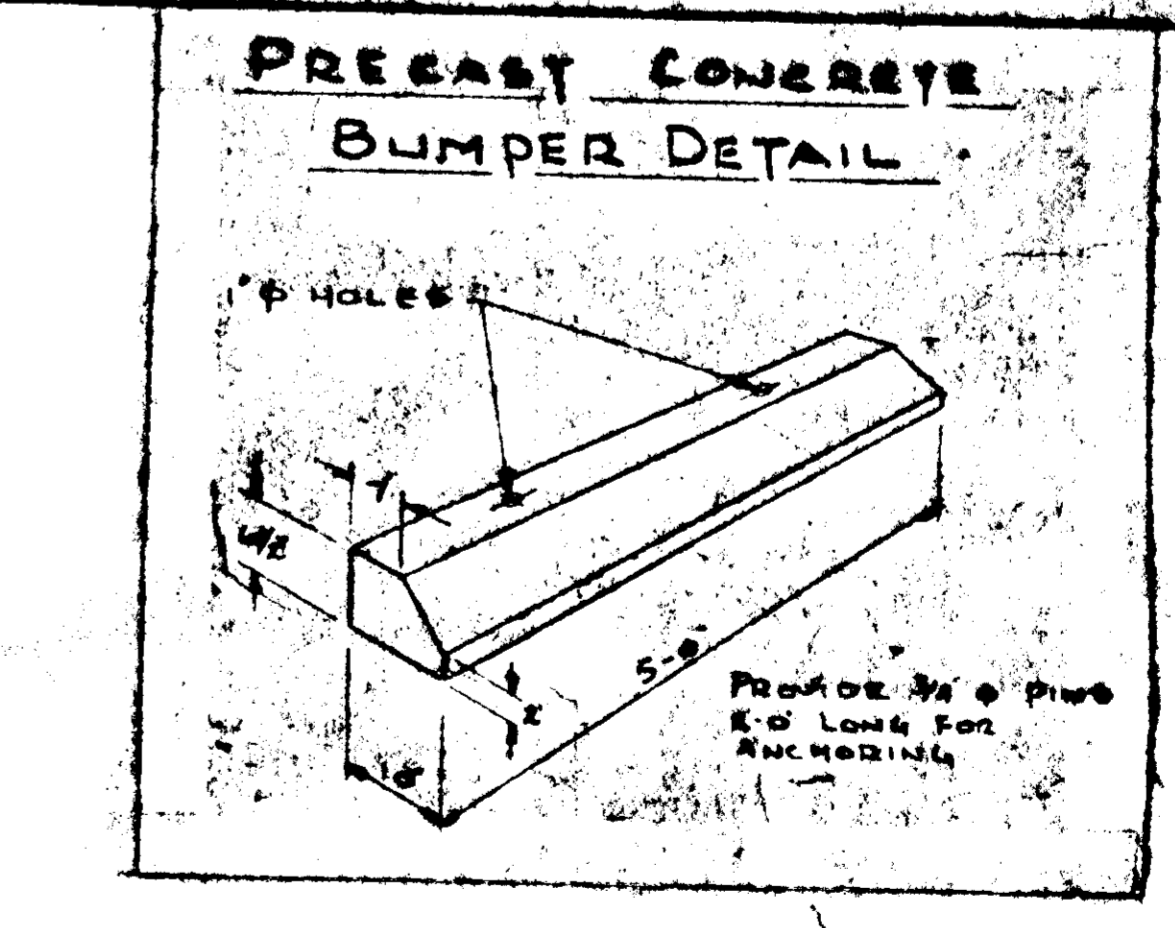
12 - NEW TELE. LINE

13 - EXIST'G ELEC. LINE

14 - NEW ELEC. LINE

NOTES:

- ALL EXISTING PAVING, DRIVES, SHRUBS, FENCES, BUILDINGS, DEBRIS, ETC. TO BE REMOVED UNLESS OTHERWISE NOTED.
- SEE DWG. E-1 FOR PLANTER LIGHT LAY-OUT & INSTALLATION DETAILS.
- SEE SPEC'S FOR LIGHT FIXTURE SCHEDULE & DWG. E-3 FOR CIRCUIT NO'S.
- ELECTRIC & TELEPHONE SERVICE TO BE UNDERGROUND FROM POLE TO B.D.
- PARKING LOT LIGHTING TO BE SHIELDED & DIRECTIONAL.
- SIGN RESTRICTIONS:
A) TOTAL SIGN AREA ALLOWED = 2 Φ FOR EACH LINEAL FOOT OF BUILDING FRONTAGE. 2 X 63.33 = 126.6 Φ.
B) FREE STAMPING SIGNS - MAX. AREA ALLOWED = 2 Φ FOR EACH FOOT OF BUILDING SETBACK. 2 X 50 = 100 Φ MAX. HEIGHT = 26' X TOP OF SIGN.
C) USE: 5' X 10' F 1/4 PEDESTAL SIGN.
- SURVEY DATA FROM SURVEY PERFORMED BY: HUDKINS ASSOCIATES, INC. 101 SHELL BUILDING 200 E. JOPPA ROAD TOWNSHIP, MARYLAND 21204 301-828-9060 DATED: 11-12-75 MALCOLM HUDKINS P.L.S. No. 5095
- PROPERTY IDENTIFICATION:
TAX MAP 24 PARCEL 493
OWNER - DONALD & MARINE S. FLAX 1 SLADE AVE, APT. 202, BALTIMORE, MD. 21208 DEED REF. - 060-344
- ELECTION DISTRICT 2
- EXISTING ZONING B-2
- MOST RECENT USE OF LOT - AUTO - SALES
- PARKING: 1 SPACE REQ'D FOR EACH 100 SQ. FT. OF TOTAL FLOOR SPACE. 2650 ÷ 100 = 27 SPACES REQ'D.
- 200 SQ. FT. PER SPACE MINIMUM.
- MAX. 8 EMPLOYEE PARKING SPACES + 32 CUSTOMER PARKING = 40 SPACES.
- CURBING TO BE CLASS "A" CONCRETE.



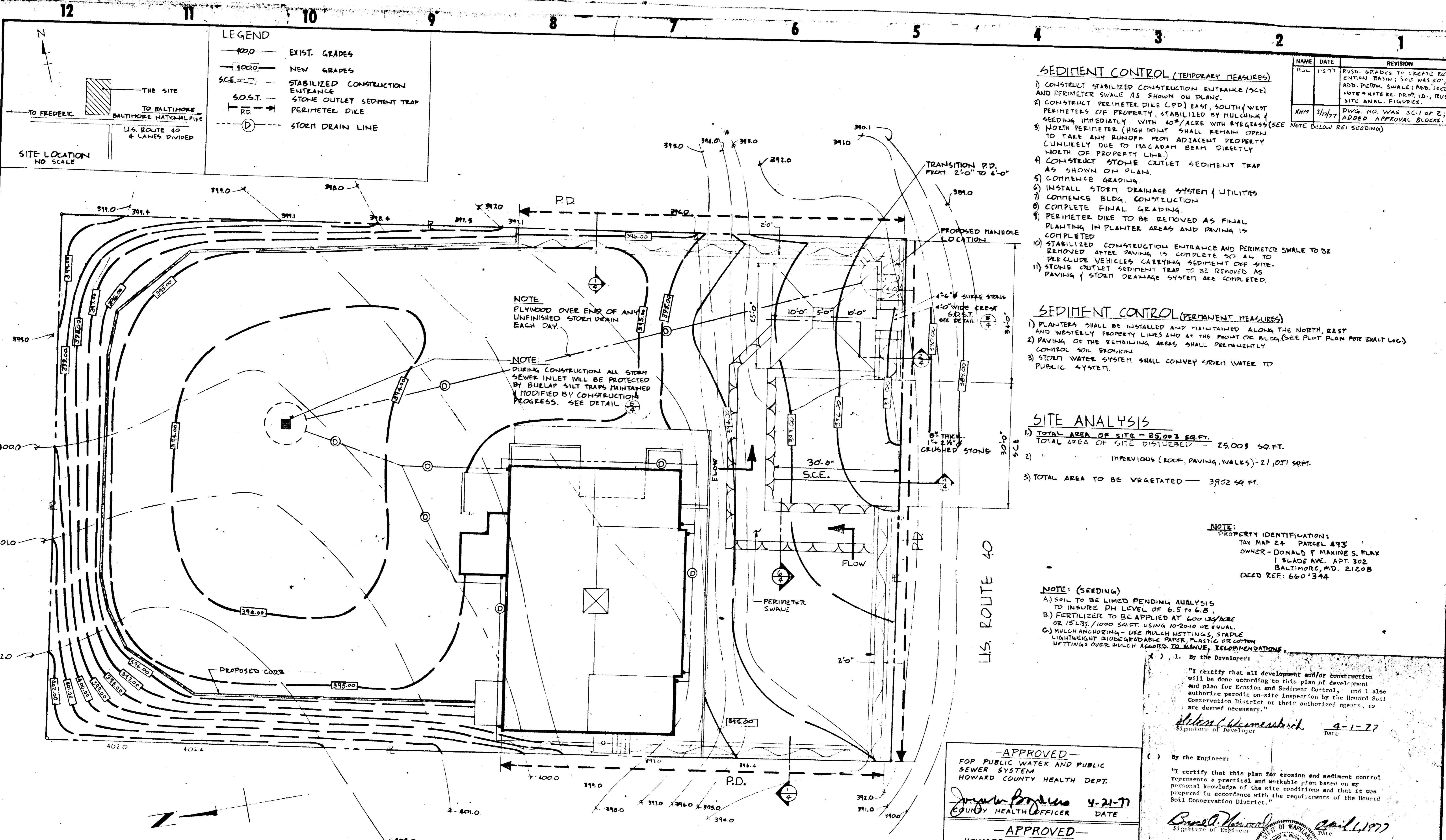
APPROVED
FOR PUBLIC WATER & PUBLIC SEWER SYSTEM.
HOWARD COUNTY HEALTH DEPT.
DATE: 4-14-77

Friendly ICE CREAM CORPORATION
WILMINGTON, MASSACHUSETTS 01895
INVEST 20 BANK OF AMERICA
TEL. (413) 343-2400

9398 U.S. ROUTE 40
ELLCOTT CITY, MD.
PLOT PLAN

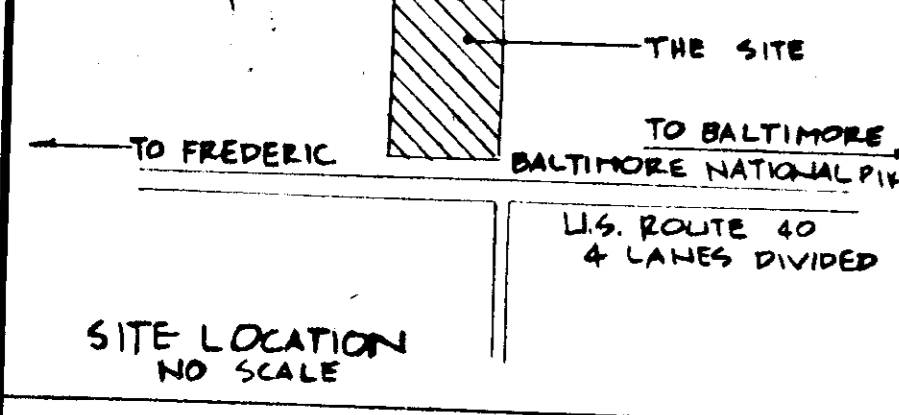
DR. BY: K.J.P. SCALE AS NOTED
CK. BY: DATE: 12-22-77

JOB NO. 110
DWN. NO. 2 OF 4
SDP-77-36



LEGEND

400.0	EXIST. GRADES
4020.0	NEW GRADES
S.C.E.	STABILIZED CONSTRUCTION ENTRANCE
S.O.S.T.	STONE OUTLET SEDIMENT TRAP
P.D.	PERIMETER DILE
(D)	STORM DRAIN LINE



SEDIMENT CONTROL (TEMPORARY MEASURES)

- 1) CONSTRUCT STABILIZED CONSTRUCTION ENTRANCE (SCE) AND PERIMETER SWALE AS SHOWN ON PLANS.
- 2) CONSTRUCT PERIMETER DILE (PD) EAST, SOUTH, WEST PERIMETERS OF PROPERTY, STABILIZED BY MULCHING & SEEDING IMMEDIATELY WITH 40#/ACRE WITH RYEGRASS (SEE NOTE BELOW RE: SEEDING)
- 3) NORTH PERIMETER (HIGH POINT) SHALL REMAIN OPEN TO TAKE ANY RUNOFF FROM ADJACENT PROPERTY (UNLIKELY DUE TO MACADAM BEING DIRECTLY NORTH OF PROPERTY LINE.)
- 4) CONSTRUCT STONE OUTLET SEDIMENT TRAP AS SHOWN ON PLAN.
- 5) COMMENCE GRADING.
- 6) INSTALL STORM DRAINAGE SYSTEM & UTILITIES.
- 7) COMMENCE BLDG. CONSTRUCTION.
- 8) COMPLETE FINAL GRADING.
- 9) PERIMETER DILE TO BE REMOVED AS FINAL PLANTING IN PLANTER AREAS AND PAVING IS COMPLETED.
- 10) STABILIZED CONSTRUCTION ENTRANCE AND PERIMETER SWALE TO BE REMOVED AFTER PAVING IS COMPLETE & TO PRECLUDE VEHICLES CARRYING SEDIMENT OFF SITE.
- 11) STONE OUTLET SEDIMENT TRAP TO BE REMOVED AS PAVING & STORM DRAINAGE SYSTEM ARE COMPLETED.

SEDIMENT CONTROL (PERMANENT MEASURES)

- 1) PLANTERS SHALL BE INSTALLED AND MAINTAINED ALONG THE NORTH, EAST AND WESTERN PROPERTY LINES AND AT THE FRONT OF BLDG. (SEE PLOT PLAN FOR EXACT LOC.)
- 2) PAVING OF THE REMAINING AREAS SHALL PERMANENTLY CONTROL SOIL EROSION.
- 3) STORM WATER SYSTEM SHALL CONVEY STORM WATER TO PUBLIC SYSTEM.

SITE ANALYSIS

- 1) TOTAL AREA OF SITE - 25,003 SQ. FT.
TOTAL AREA OF SITE DISTURBED - 25,003 SQ. FT.
- 2) IMPREVIOUS (ROOF, PAVING, WALKS) - 21,031 SQ. FT.
- 3) TOTAL AREA TO BE VEGETATED - 3952 SQ. FT.

NOTE:
PROPERTY IDENTIFICATION:
TAX MAP 24 PARCEL 493
OWNER - DONALD F. MAKINE S. FLAX
1 SLADE AVE. APT. 302
BALTIMORE, MD. 21208
DEED REF: 660-344

NOTE: (SEEDING)

- A) SOIL TO BE LIMED PENDING ANALYSIS TO INSURE PH LEVEL OF 6.5 TO 6.8.
- B) FERTILIZER TO BE APPLIED AT 600 LBS/ACRE OR 15 LBS/1000 SQ. FT. USING 10-20-10 OR EQUAL.
- C) MULCH ANCHORING - USE MULCH NETTINGS, STAPLE LIGHTWEIGHT BIODEGRADABLE PAPER, PLASTIC OR COTTON NETTINGS OVER MULCH ACCORD TO MANUFACTURER'S RECOMMENDATIONS.

APPROVED
FOR PUBLIC WATER AND PUBLIC SEWER SYSTEM
HOWARD COUNTY HEALTH DEPT.
Joseph P. Rogers 4-21-77
COUNTY HEALTH OFFICER DATE

APPROVED
HOWARD COUNTY OFFICE OF PLANNING AND ZONING
Thomas J. Jamel 4-22-77
PLANNING DIRECTOR DATE
Phillip M. ... 4-11-77
CHIEF, DIVISION OF LAND DEVELOPMENT DATE

APPROVED
FOR PUBLIC WATER, PUBLIC SEWAGE AND STORM DRAIN SYSTEMS, AND ROADS.
HOWARD COUNTY DEPT. OF PUBLIC WORKS.
P. J. ... 4-19-77
DIRECTOR DATE
W. O. ... 4-18-77
CHIEF, BUREAU OF HWYS. DATE

APPROVED
DIVISION OF LAND DEVELOPMENT
HOWARD COUNTY, MARYLAND
DATE 2-15-77
...

By the Developer:
Stewart C. ... 4-1-77
Signature of Developer Date

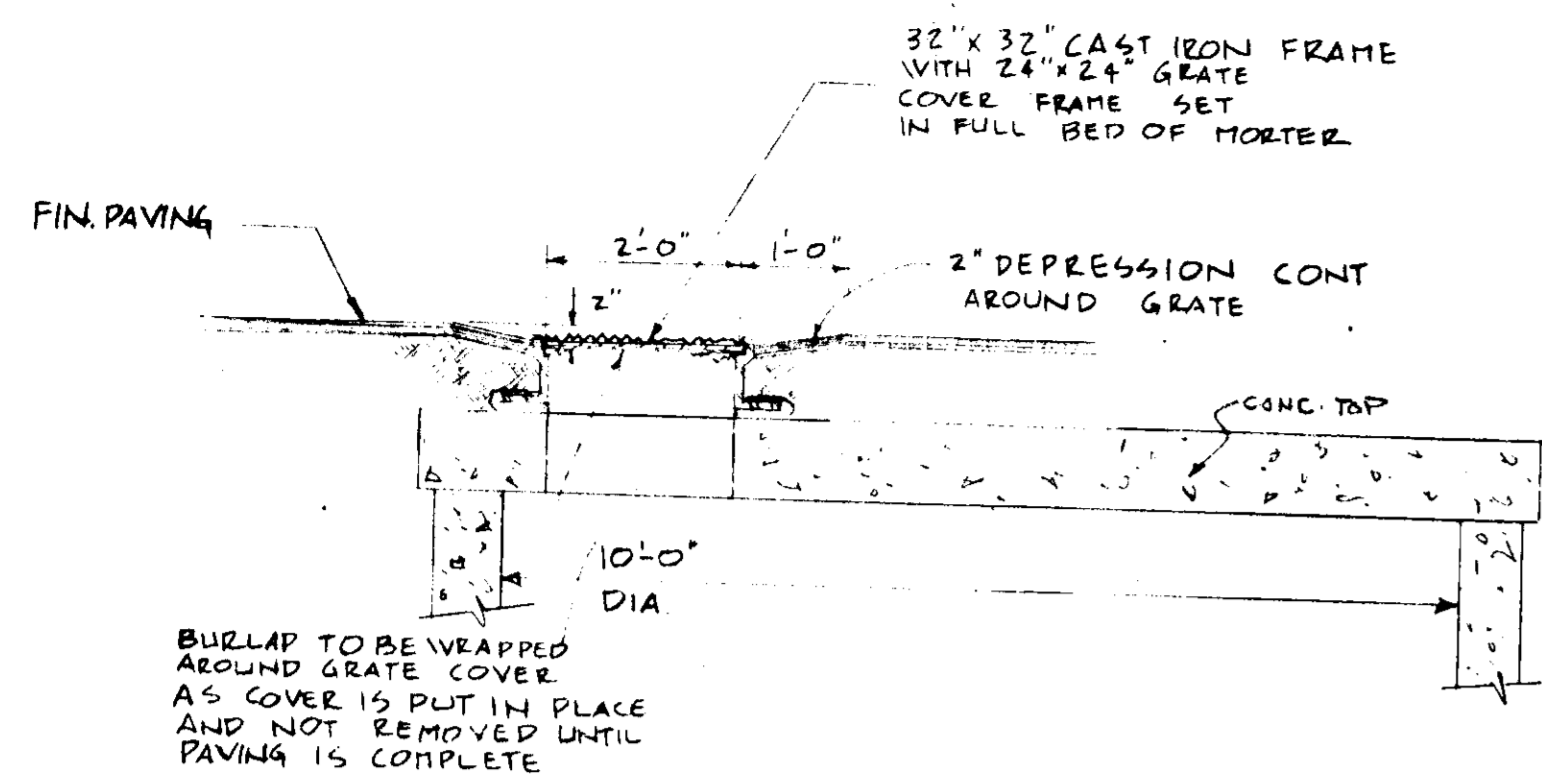
By the Engineer:
... 4-11-77
Signature of Engineer Date

Reviewed for HOWARD COUNTY S.C.D. and meets Technical Requirements
... Date 4-7-77
U. S. Soil Conservation Service

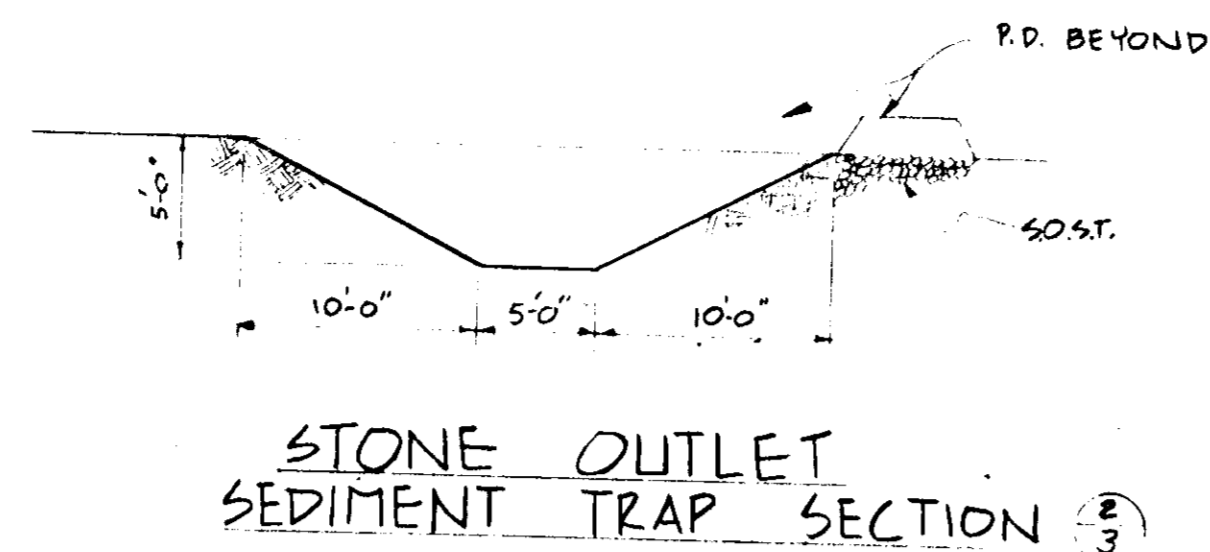
THIS DEVELOPMENT PLAN IS APPROVED FOR SOIL EROSION AND SEDIMENT CONTROL BY THE HOWARD COUNTY CONSERVATION DISTRICT.
Approved *John Myers* Date 4-7-77

Friendly ICE CREAM CORPORATION
WILBRHAM MASSACHUSETTS 01095
9298 U.S. ROUTE 40
ELLCOTT, CITY MD
SEDIMENT EROSION CONTROL PLAN
DR. BY: PEP SCALE: 1" = 10'-0"
CK. BY: DATE: 8-24-76

DRAWING 40-107 22902-1



CATCH BASIN DETAIL (3)
SCALE: 1/2" = 1'-0"



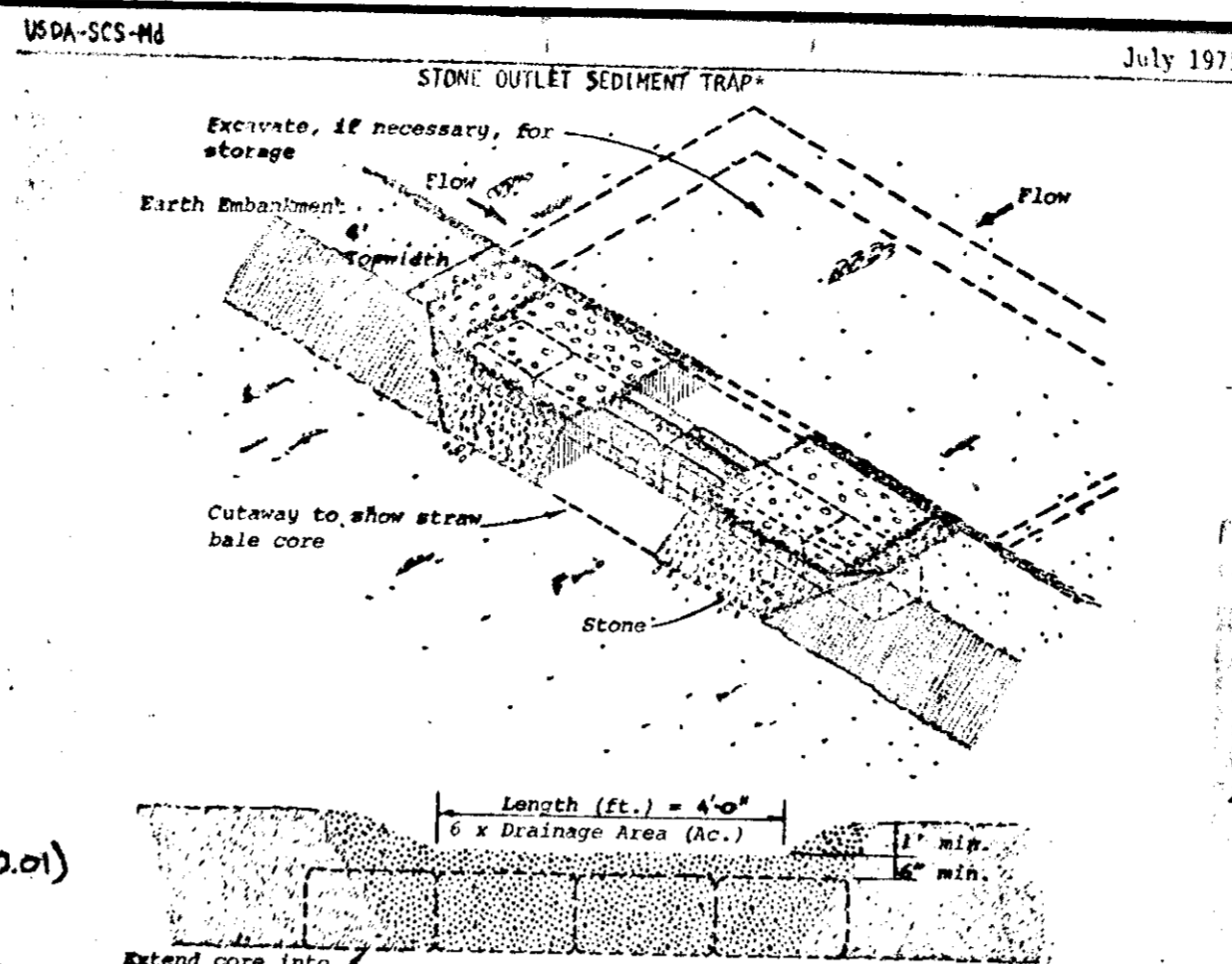
STONE OUTLET SEDIMENT TRAP SECTION (3)

STONE OUTLET SEDIMENT TRAP ANALYSIS

VOLUME OF TRAP REQ'D. = 1800 FT³/ACRE (USDA-SCS-MD HANDBOOK Pg. 20.01)
 VOLUME REQ'D. FOR FIC SITE = 1800 FT³ X .6 AC = 1080 FT³ REQ'D.
 TRAP SUPPLIED IS 25' X 25' X 5' DEEP DESIGN WITH SIDE SLOPES OF 2:1 (SEE PLAN SC-1 OF 2)
 VOLUME OF TRAP SUPPLIED = $V = \frac{1}{2} h (b_1 + b_2 + \sqrt{b_1 b_2}) L$
 $= \frac{1}{2} (5) (25 + 25 + \sqrt{25 \times 25}) (25)$
 $= \frac{1}{2} (5) (62.5 + 25 + \sqrt{625}) (25)$
 $= \frac{1}{2} (5) (77.5) (25)$
 $= 1241.6 \text{ FT}^3 \text{ SUPPLIED} > 1080 \text{ FT}^3 \text{ REQ'D}$

TRAP CLEANOUT

SEDIMENT SHALL BE REMOVED AND THE TRAP RESTORED TO ITS ORIGINAL DIMENSIONS WHEN THE SEDIMENT HAS ACCUMULATED TO 1/2 THE DESIGN DEPTH (2.5') OF THE TRAP. SEDIMENT REMOVED FROM TRAP SHALL BE DEPOSITED IN SUITABLE AREA AND IN SUCH A MANNER THAT IT WILL NOT ERODE.



- NOTE: Drawings show straw bales used for core. Bales are anchored as per Standard and Specifications for Straw Bale Dike. Other materials (e.g., timber or concrete block) may also be used for core. Firmly anchor all core material to ground.
- Construction Specifications
- Area under embankment shall be cleared, grubbed and stripped of any vegetation and root mat. The pool area shall be cleared.
 - The fill material for the embankment shall be free of roots or other woody vegetation as well as over sized stones, rocks, organic material or other objectionable material. The embankment shall be compacted by traversing with equipment while it is being constructed.
 - Sediment shall be removed and trap restored to its original dimensions when the sediment has accumulated to 1/2 the design depth of the trap. Removed sediment shall be deposited in a suitable area and in such a manner that it will not erode.
 - The structure shall be inspected after each rain and repairs made as needed.
 - Construction operations shall be carried out in such a manner that erosion and water pollution is minimized.
 - The structure shall be removed and the area stabilized when the drainage area has been properly stabilized.
 - All cut and fill slopes shall be 2:1 or flatter.
 - The crushed stone used in the outlet shall meet AASHTO designation M43, Size No. 2 or 24 or its equivalent such as MSHA No. 2. Gravel, meeting the above gradation, may be used if crushed stone is not available. Cluster run is not acceptable.

U. S. DEPARTMENT OF AGRICULTURE
 SOIL CONSERVATION SERVICE
 College Park, Md.

DETAIL (3)

() 1. By the Developer:

"I certify that all development and/or construction will be done according to this plan of development and plan for Erosion and Sediment Control, and I also authorize periodic on-site inspection by the Howard Soil Conservation District or their authorized agents, as are deemed necessary."

Signature of Developer: *William C. Williams* Date: 3/21/77

() By the Engineer:

"I certify that this plan for erosion and sediment control represents a practical and workable plan based on my personal knowledge of the site conditions and that it is prepared in accordance with the requirements of the Howard Soil Conservation District."

Signature of Engineer: *Ernie H. Hanna* Date: 3/21/77



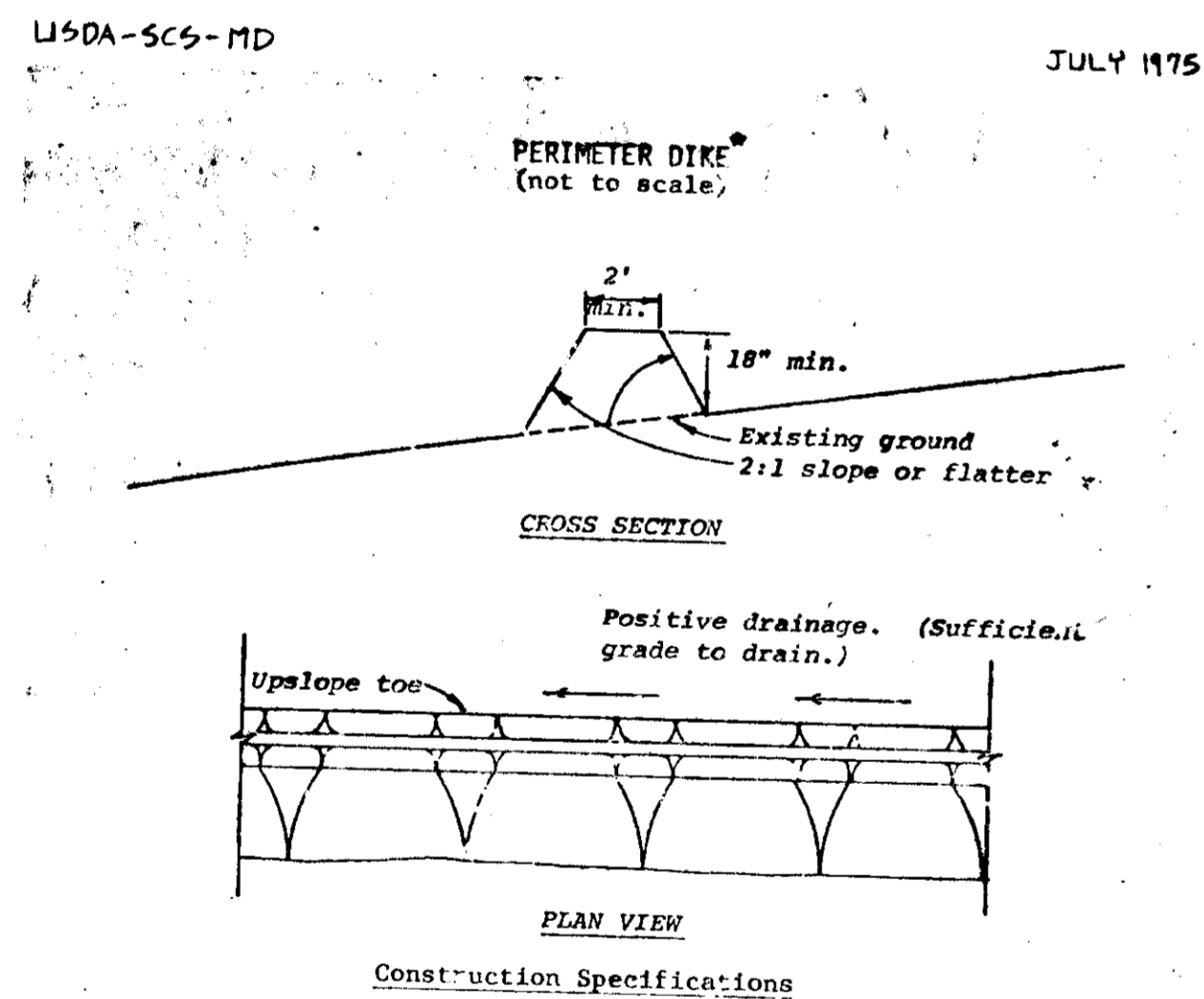
Reviewed for HOWARD S.C.D. Name

and meets Technical Requirements

Signature: *Ernie H. Hanna* Date: 3/23/77
 U. S. Soil Conservation Service

THIS DEVELOPMENT PLAN IS APPROVED FOR SOIL EROSION AND SEDIMENT CONTROL BY THE HOWARD SOIL CONSERVATION DISTRICT.

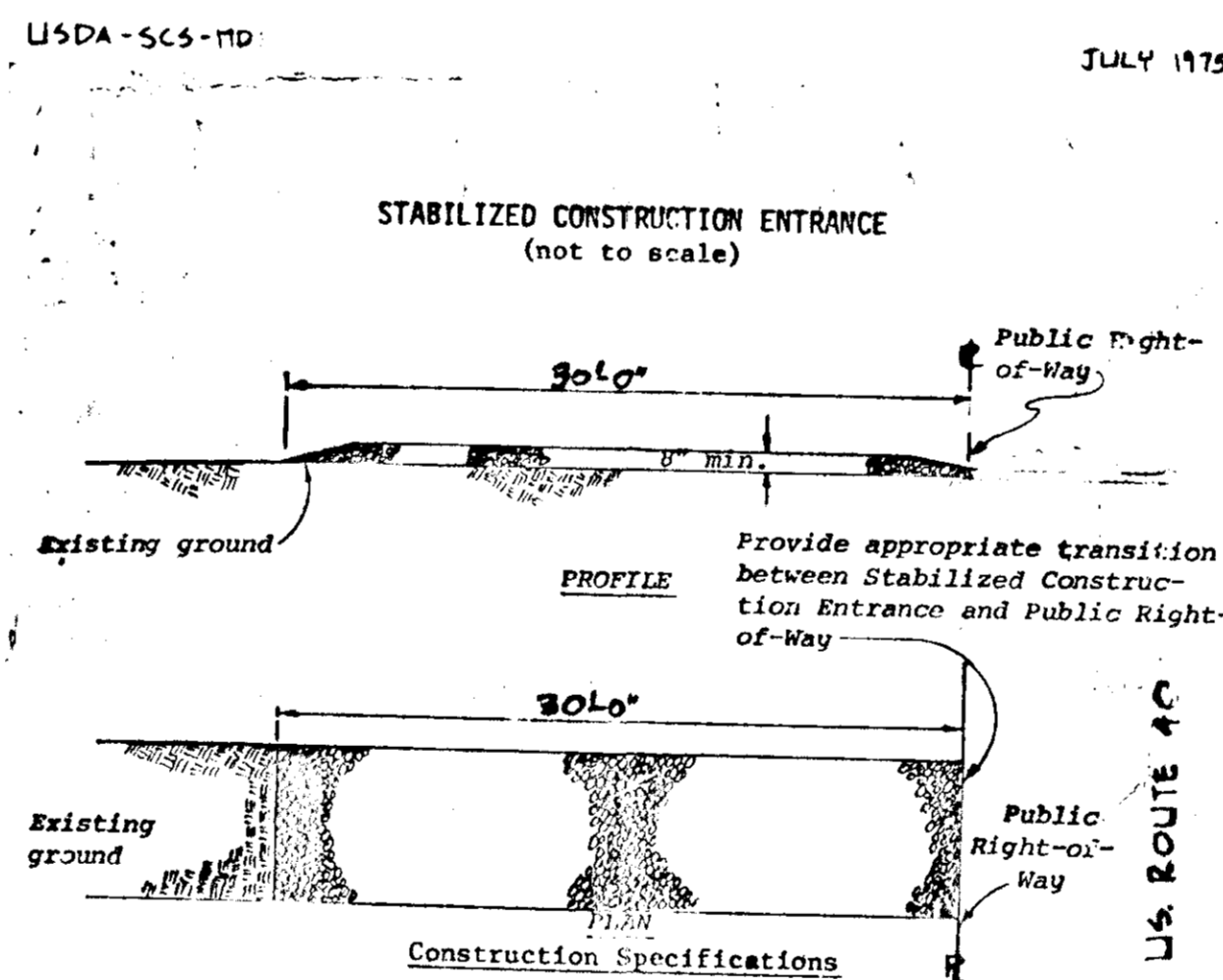
Approved: *Robert J. ...* Date: 3/23/77
 Howard S.C.D.



- Construction Specifications
- All dikes shall be machine compacted.
 - All perimeter dikes shall have positive drainage to an outlet.
 - A. Diverted runoff from a protected or stabilized upland area shall outlet directly onto an undisturbed stabilized area or into a level spreader or grade stabilization structure.
 - B. Diverted runoff from a disturbed or exposed upland area shall be conveyed to a sediment trapping device such as sediment trap or a sediment basin or to an area protected by any of these practices.
 - Stabilization, when required, shall be done in accordance with Standard and Specifications for Grassed Waterway. The minimum area to be stabilized shall be the channel flow area.
 - Periodic inspection and required maintenance shall be provided.

U. S. DEPARTMENT OF AGRICULTURE
 SOIL CONSERVATION SERVICE
 College Park, Md.

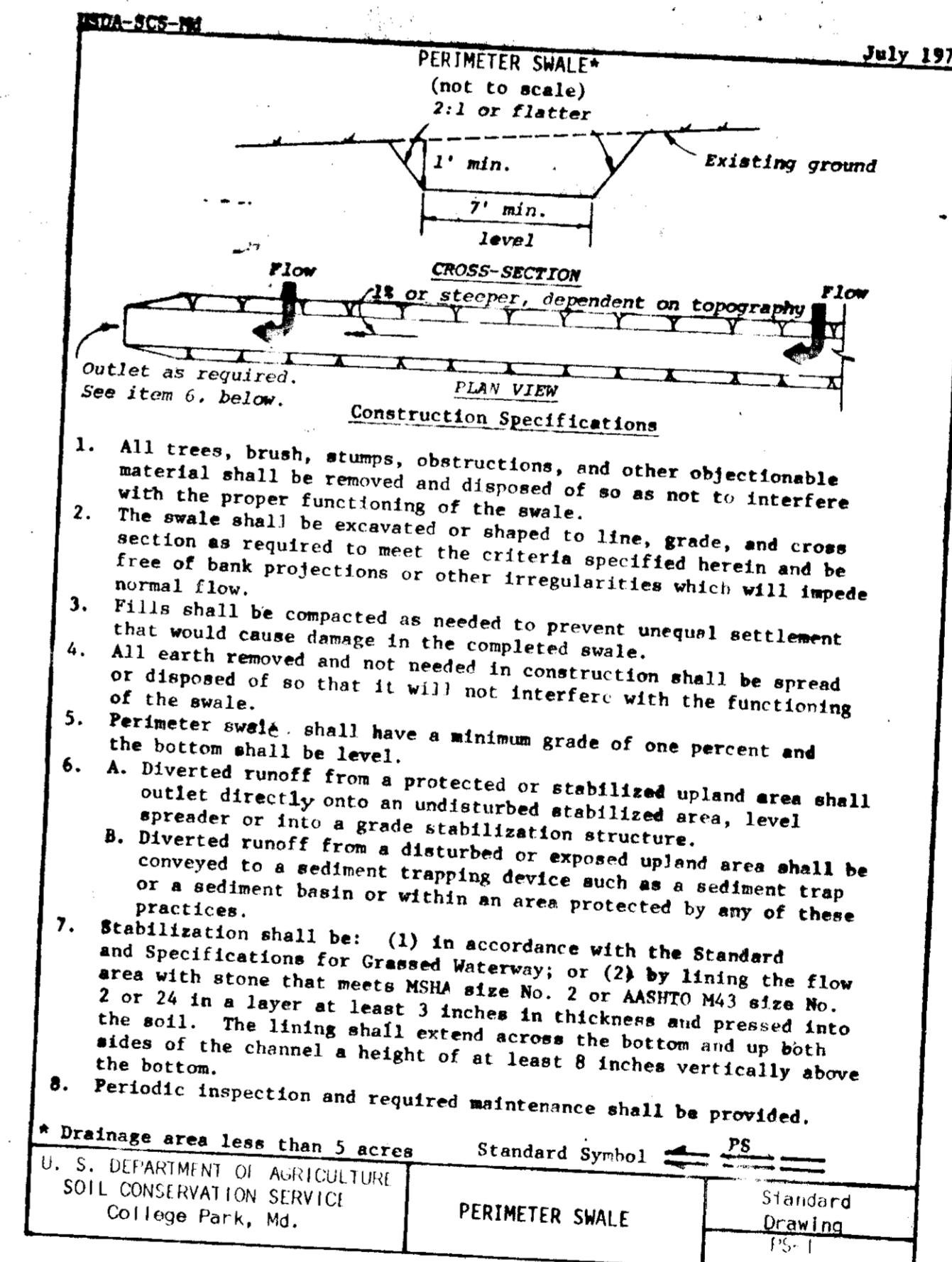
SECTION (3)



- Construction Specifications
- Stone size - Use MSHA size No. 2 (2-1/2" to 1") or AASHTO designation M43, size No. 2 (2-1/2" to 1-1/2"). Use crushed stone.
 - Length - As effective, but not less than 30 feet.
 - Thickness - Not less than eight (8) inches.
 - Width - Not less than full width of all points of ingress or egress.
 - Washing - When necessary, wheels shall be cleaned to remove sediment prior to entrance onto public right-of-way. When washing is required, it shall be done on an area stabilized with crushed stone which drains into an approved sediment trap or sediment basin. All sediment shall be prevented from entering any storm drain, ditch, or watercourse through use of sand bags, gravel, boards or other approved methods.
 - Maintenance - The entrance shall be maintained in a condition which will prevent tracking or flowing of sediment onto public right-of-way. This may require periodic top dressing with additional stone as conditions demand and repair and/or cleanout of any measures used to trap sediment. All sediment spilled, dropped, washed or tracked onto public rights-of-way must be removed immediately.

U. S. DEPARTMENT OF AGRICULTURE
 SOIL CONSERVATION SERVICE
 College Park, Md.

SECTION (3)



- Construction Specifications
- All trees, brush, stumps, obstructions, and other objectionable material shall be removed and disposed of so as not to interfere with the proper functioning of the swale.
 - The swale shall be excavated or shaped to line, grade, and cross section as required to meet the criteria specified herein and be free of bank projections or other irregularities which will impede normal flow.
 - Fills shall be compacted as needed to prevent unequal settlement that would cause damage in the completed swale.
 - All earth removed and not needed in construction shall be spread or disposed of so that it will not interfere with the functioning of the swale.
 - Perimeter swale shall have a minimum grade of one percent and the bottom shall be level.
 - A. Diverted runoff from a protected or stabilized upland area shall outlet directly onto an undisturbed stabilized area, level spreader or into a grade stabilization structure.
 - B. Diverted runoff from a disturbed or exposed upland area shall be conveyed to a sediment trapping device such as a sediment trap or a sediment basin or within an area protected by any of these practices.
 - Stabilization shall be: (1) in accordance with the Standard and Specifications for Grassed Waterway; or (2) by lining the flow area with stone that meets MSHA size No. 2 or AASHTO M43 size No. 2 or 24 in a layer at least 3 inches in thickness and pressed into the soil. The lining shall extend across the bottom and up both sides of the channel a height of at least 6 inches vertically above the bottom.
 - Periodic inspection and required maintenance shall be provided.

U. S. DEPARTMENT OF AGRICULTURE
 SOIL CONSERVATION SERVICE
 College Park, Md.

SECTION (3)

APPROVED
 DIVISION OF LAND DEVELOPMENT

HOWARD COUNTY, MARYLAND
 DATE: 2-15-77

NAME	DATE	REVISION
RJL	12-16-76	ADD. SECT. 6-S&T. ANALYSIS AND TRAP CLEANOUT.
RJL	1-3-77	SCALE DIM. WAS 30'0" ADD. PROP. ID.
		ADD. PERIMETER SWALE (S&T); ADD. PROP. ID. NOTE. SEE WAS 50'; ADD. STONE OUTLET SEDIMENT TRAP ANAL. + TRAP CLEANOUT NOTE.
RHM	3/17/77	DWG. NO. WAS S.C.E. OF 2; ADDED APPROVAL BLOCKS.

NOTE:
 PROPERTY IDENTIFICATION:
 TAX MAP 24 PARCEL 493
 OWNER - DONALD MAXINE S. PLAX
 ISLAND AVE. APT. 302
 BALTIMORE, MD. 21208
 DEDD REF: 660-344

APPROVED
 FOR PUBLIC WATER AND PUBLIC SEWER SYSTEM
 HOWARD COUNTY HEALTH DEPT.
Joseph Rogers 4-24-77
 HEALTH OFFICER DATE

APPROVED
 HOWARD COUNTY OFFICE OF PLANNING & ZONING
Thomas J. Harris 4-22-77
 PLANNING OFFICER DATE
Robert J. ... 4-11-77
 CHIEF, DIVISION OF LAND DEVELOPMENT DATE

APPROVED
 FOR PUBLIC WATER, PUBLIC SEWAGE AND STORM DRAIN SYSTEM, AND ROADS
 HOWARD COUNTY DEPT. OF PUBLIC WORKS.
By Regis 4-29-77
 DIRECTOR DATE
Francis M. ... 3/23/77
 CHIEF, BUREAU OF HWYS DATE

Friendly ICE CREAM CORPORATION
 9398 US ROUTE 40
 ELLICOTT CITY MD.
 SEDIMENT EROSION CONTROL PLAN
 HO. CO. EB. 2
 Draw No. 4 OF 4