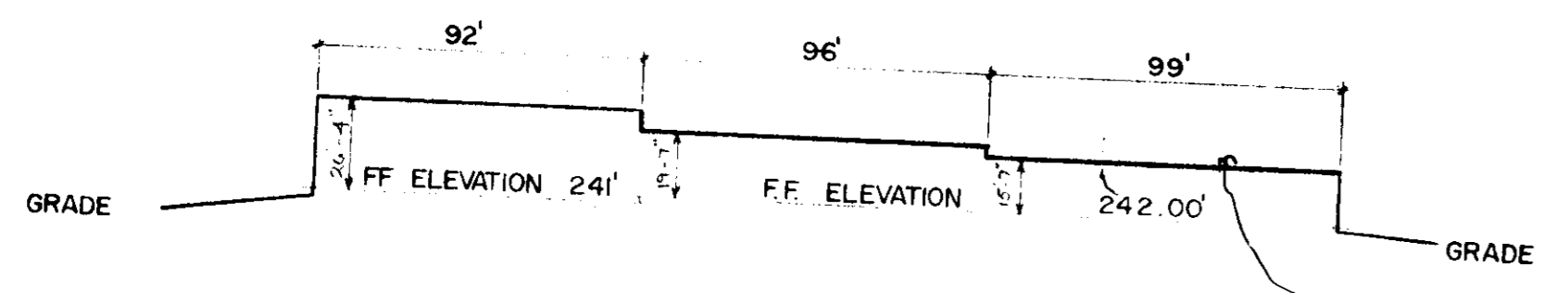
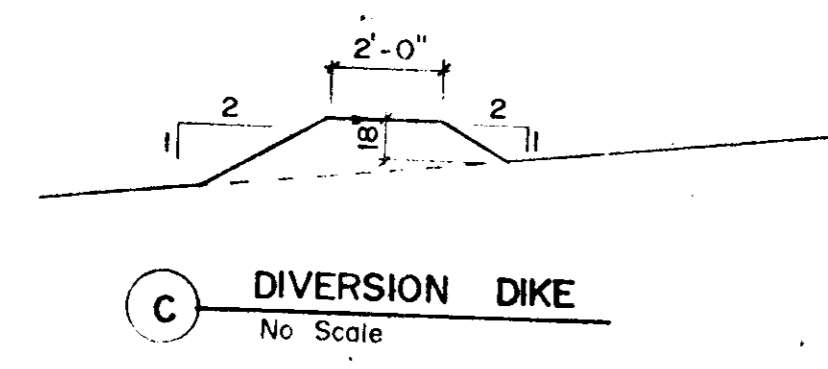
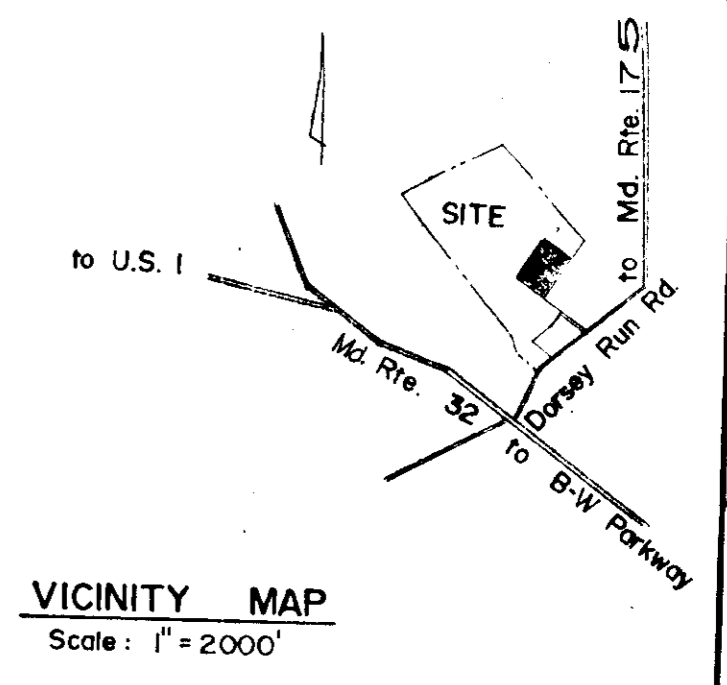
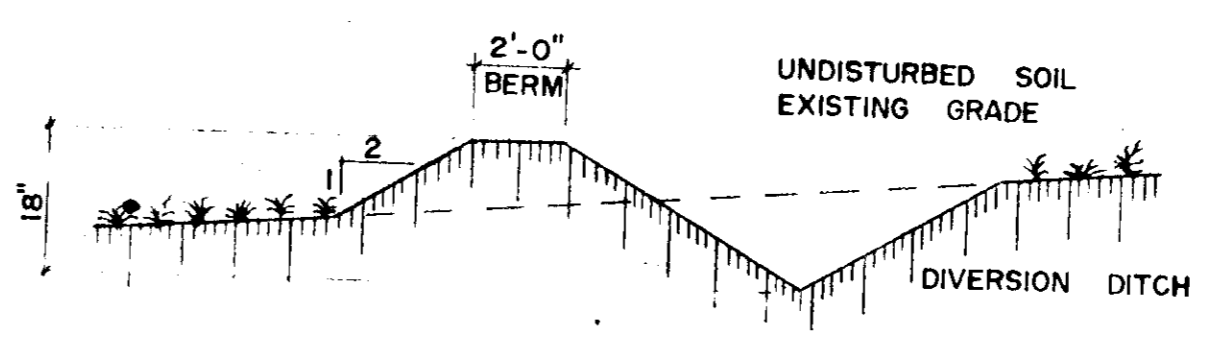
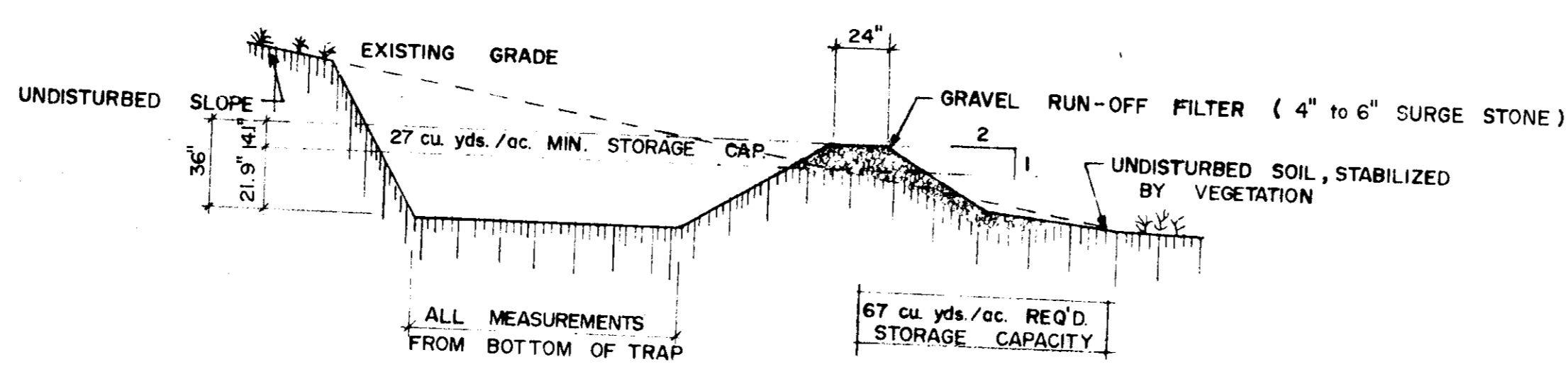


SEDIMENT TRAP CALCULATIONS	
AREA DRAINED	Ad = 1.6 Acres
REQ'D. SEDIMENT STORAGE	1.6 x 67 = 107.2 cu. yds.
SEDIMENT STORAGE PROVIDED	11 x 10 x 1 = 110 cu. yds.
REQ'D. CLEAN-OUT STORAGE	1.6 x 27 = 43.2 cu. yds.
CLEAN-OUT LEVEL	43.2 ÷ 110 = 39.2%
	39.2% x 36" = 14.1"
	14.1" - FROM TOP
	21.9" - FROM BOTTOM



SCHMATIC PROFILE OF BUILDING
Scale: 1" = 50'

B SEDIMENT TRAP
No Scale

A DIVERSION DITCH & BERM
No Scale

ELEVATION OF SECTION B
No Scale

NOTES

- All sediment control measures to be adjusted to meet field conditions at the time of construction and be constructed prior to any grading or disturbance of existing surface material.
- All sediment control measures shall be undertaken in strict accordance with approved plans and the criteria and specification approved by Howard County Soil Conservation District.
- Periodic inspection and maintenance of all sediment control structures must be provided to insure intended purpose is accomplished.
- At the completion of each days work during grading operation, fill slopes will be protected at top of fill or install a berm to direct surface run-off and potential sediment to the planned sediment control device.
- All sediment control devices shall follow the standards and specifications for soil erosion as distributed by Howard Co. Soil Conservation District.

SEQUENCE OF EVENTS:

- Clear site in areas required and install temporary sediment control devices, construct berms.
- Strip top soil and use top soil in the construction of diversion dike.
- Rough grade and begin construction, remove temporary sedimentary controls when site is stabilized.
- Stabilize all areas outside construction area as specified below.
- Complete construction and paving.
- Seed bed preparation:
On respread regrade topsoil add,
2200⁰/Ac. pulverized dolomitic limestone
500⁰/Ac. 0-20-0 superphosphate
1000⁰/Ac. 10-10-10 fertilizer or equal.
All harrowed to 3" depth
- TEMPORARY AND PERMANENT STABILIZING:**
Stabilize all lawn areas of 3:1 (max.) slope or less w/ 6⁰/1000 sq. ft. Kentucky 31 Tall Fescue and 1⁰/1000 sq. ft. Sericea Lespedeza, (inoculated)
- Mulch all seeded areas w/ straw or equal, 2 tons/ac. Anchor w/ liquid asphalt.
- Remove temporary stabilizing-sedimentary measures.

PARKING:

- Number of spaces required - 23
- Number of spaces provided - 53
- Parking space are 9' x 22' in size

PROJECT SITE ANALYSIS:

- Total area - 46.031 Ac.
- Area of parcel - 3.5 Ac.
- Present zoning - M-2
- Total number of employees - 46
- Total floor space - 23808 sq. ft.

NOTE: No additional employees needed with expansion, storage only.

PAVING SPECIFICATION:

- 1 1/2" Bituminous concrete surface
- 5" Bituminous concrete binder
- 6" Crusher run base

To be constructed in accordance with the Howard County Road Construction Code and Specifications.

PAVING NOTES:

- Base is to be primed 5/10 gals. of MC-1 asphalt or 5/10 gals. RT-2 tar applied under pressure.
- Tack coat will be required and the placing of the tack coat will be done in accordance to Section C-31-4 of Howard County Road Construction Code and Specification.

Reviewed for Howard Soil Conservation District and meets Technical Requirements.

U.S. SOIL CONSERVATION SERVICE DATE

This development plan is approved for Soil Erosion and Sediment Control by the Howard Soil Conservation District.

APPROVED *Richard J. Zickman* DATE 11/1/76

DEVELOPER'S CERTIFICATE

"I certify that all development and/or construction will be done according to this plan of development and plan for Erosion and Sediment Control, and I also authorize periodic or site inspection by the Howard Soil Conservation District or their authorized agents, as are deemed necessary. Revision from this plan will not be made unless authorized by the Howard Soil Conservation District."

APPROVED: *James P. Felt* DATE 11-9-76

APPROVED: STORM DRAINAGE SYSTEMS AND ROADS HOWARD COUNTY DEPARTMENT OF PUBLIC WORKS

APPROVED: *Francisco P. McCreland* DATE 11/8/76

ARCHITECT CERTIFICATION:

"I certify that this plan for Erosion and Sediment Control represents a practical and workable plan based on my personal knowledge of the site conditions and that it was prepared in accordance with the requirements of the Howard Soil Conservation District."

APPROVED: *James P. Felt* DATE 11-9-76

"I certify that this plan for Erosion and Sediment Control represents a practical and workable plan based on my personal knowledge of the site conditions and that it was prepared in accordance with the requirements of the Howard Soil Conservation District."

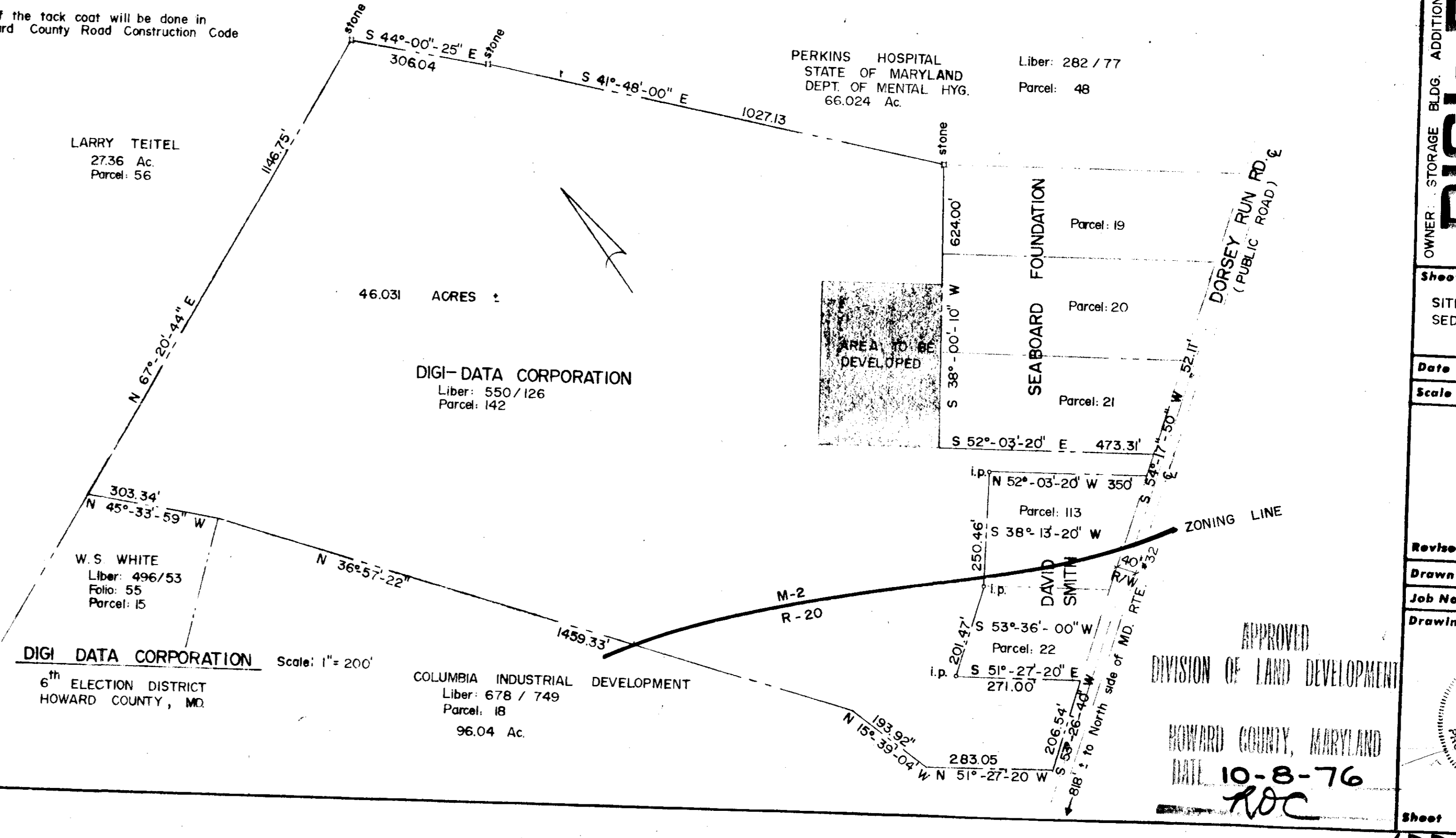
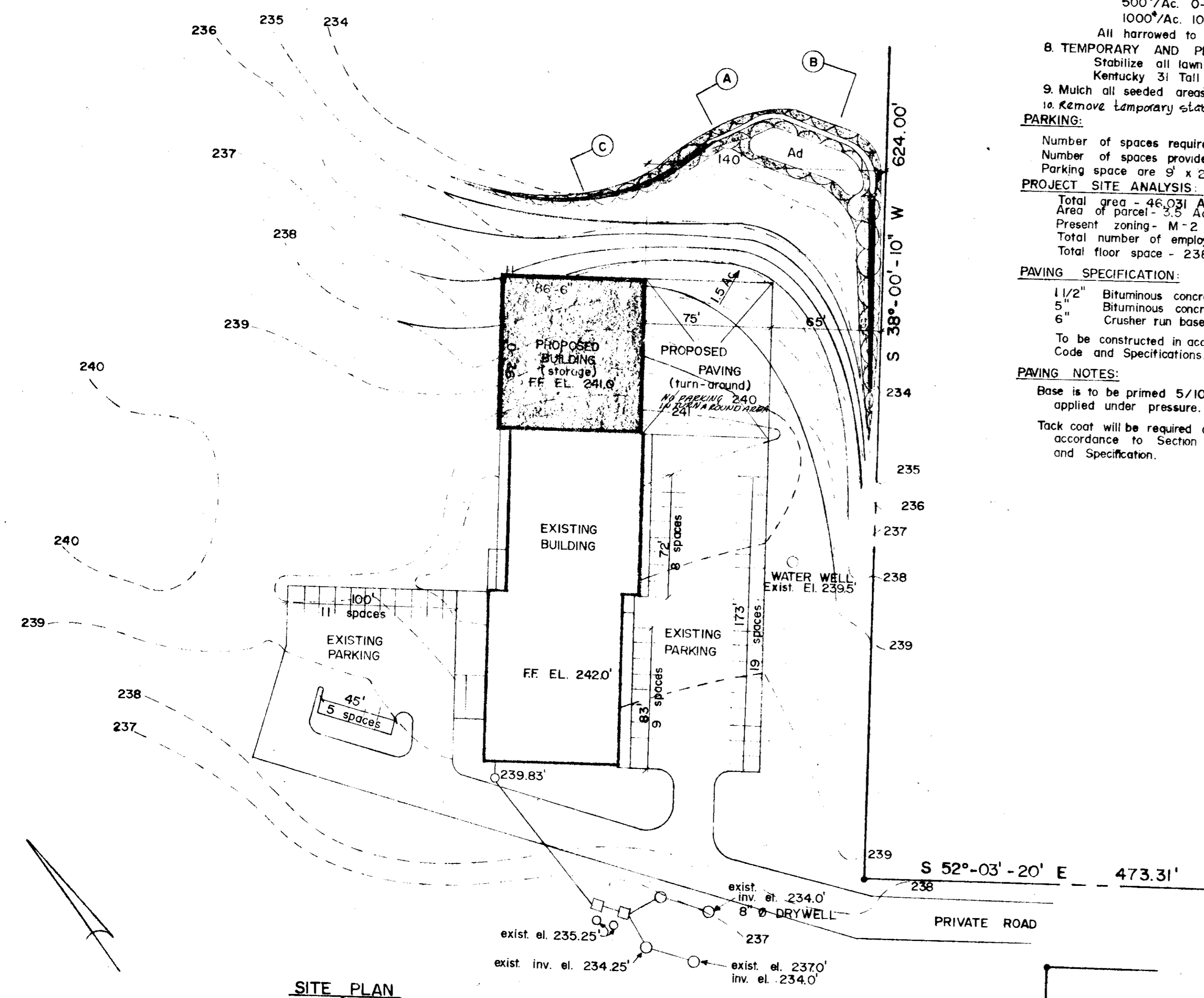
APPROVED: FOR PRIVATE WATER AND PRIVATE SEWERAGE SYSTEMS, HOWARD COUNTY HEALTH DEPARTMENT

APPROVED: *Joseph M. Boyle* DATE 11-9-76

APPROVED: HOWARD COUNTY OFFICE OF PLANNING AND ZONING

APPROVED: *Thomas J. Harney* DATE 11-12-76

APPROVED: *James P. Felt* DATE 11-9-76



DIGI-DATA CORPORATION Scale: 1" = 200'

APPROVED
DIVISION OF LAND DEVELOPMENT
HOWARD COUNTY, MARYLAND
DATE 10-8-76
ROC

SEAL: [Professional Engineer Seal]

ENGINEER and ARCHITECT: **CDI / TADJER-COHEN**
1109 Spring Street
Silver Spring, Md. 20910
585-4985

DEVELOPER and BUILDER: **PORTER BROS., INC.**
CONTRACTORS & DEVELOPERS
140 BACK RIVER NECK RD. 686-5440
BALTIMORE, MARYLAND 21287

DIGI-DATA CORP.
OWNER: STORAGE BLDG. ADDITION TO APPROVED SDP-77-14
6 B ELECTION DISTRICT
JESSUP, MD. 20794
Phone: 498-0200

Sheet Title: **SITE PLAN SEDIMENT CONTROL PLAN**

Date: 7/26/76
Scale: NOTED

Revised: 9-1-76
8-2-76
Drawn: JLC
Job No.:
Drawing:

Sheet 1 of 1
SDP-77-14