

ENGINEER'S CERTIFICATION:

I hereby certify that the information contained hereon is the same as that shown on previously approved S.D.P. 74-29, with the following exceptions:
 1. Buildings have been revised to reflect the addition of more 3 bedroom units.
 2. Unit tabulation now includes the 3 bedroom units added.
 3. I further certify that the sediment & erosion control measures & drainage areas as previously approved remain the same; Road layouts, grades, storm drains, water & sewer & building locations remain substantially the same as originally planned, the building setbacks comply with section 7A-A-1 Districts of the Howard County Zoning Code.

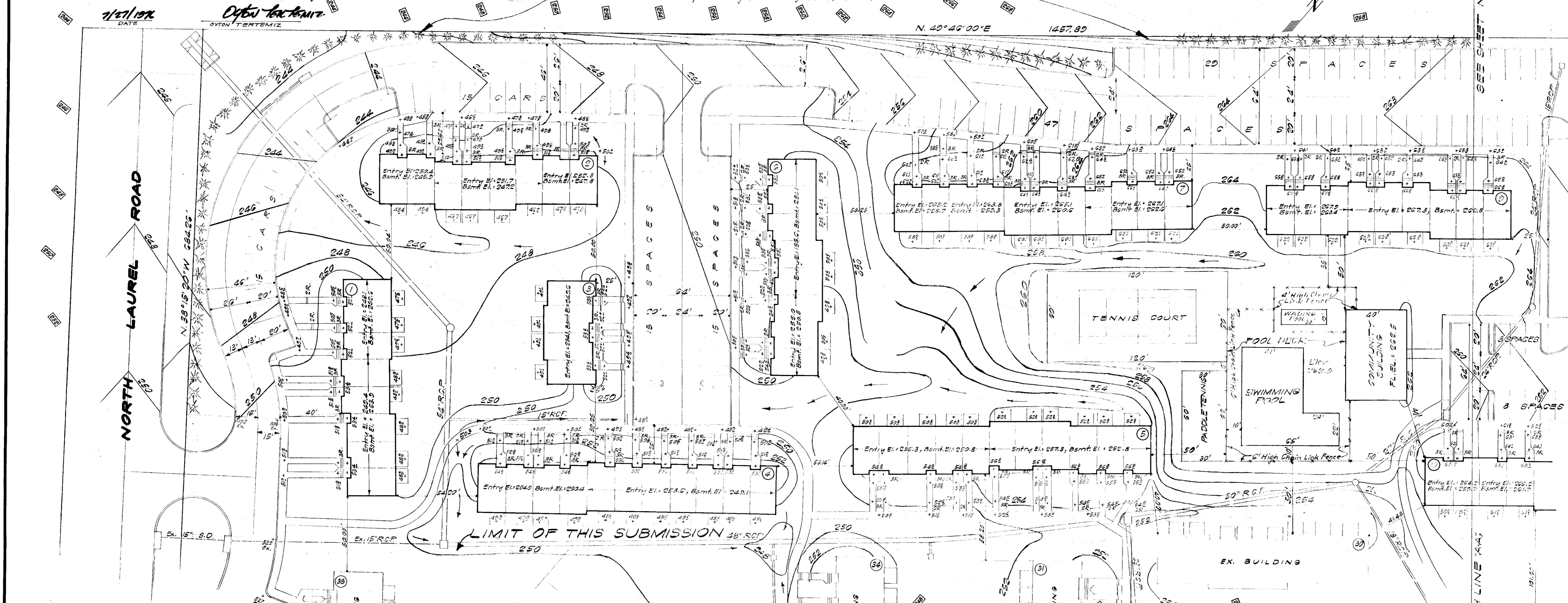


PROPERTY OF GEORGE REVITZ ET AL

W.H.H. 438/300 - W.H.H. 460/666

Provide screen planting (8' evergreens) 10' a.c.

N. 40° 46' 00" E 1457.89



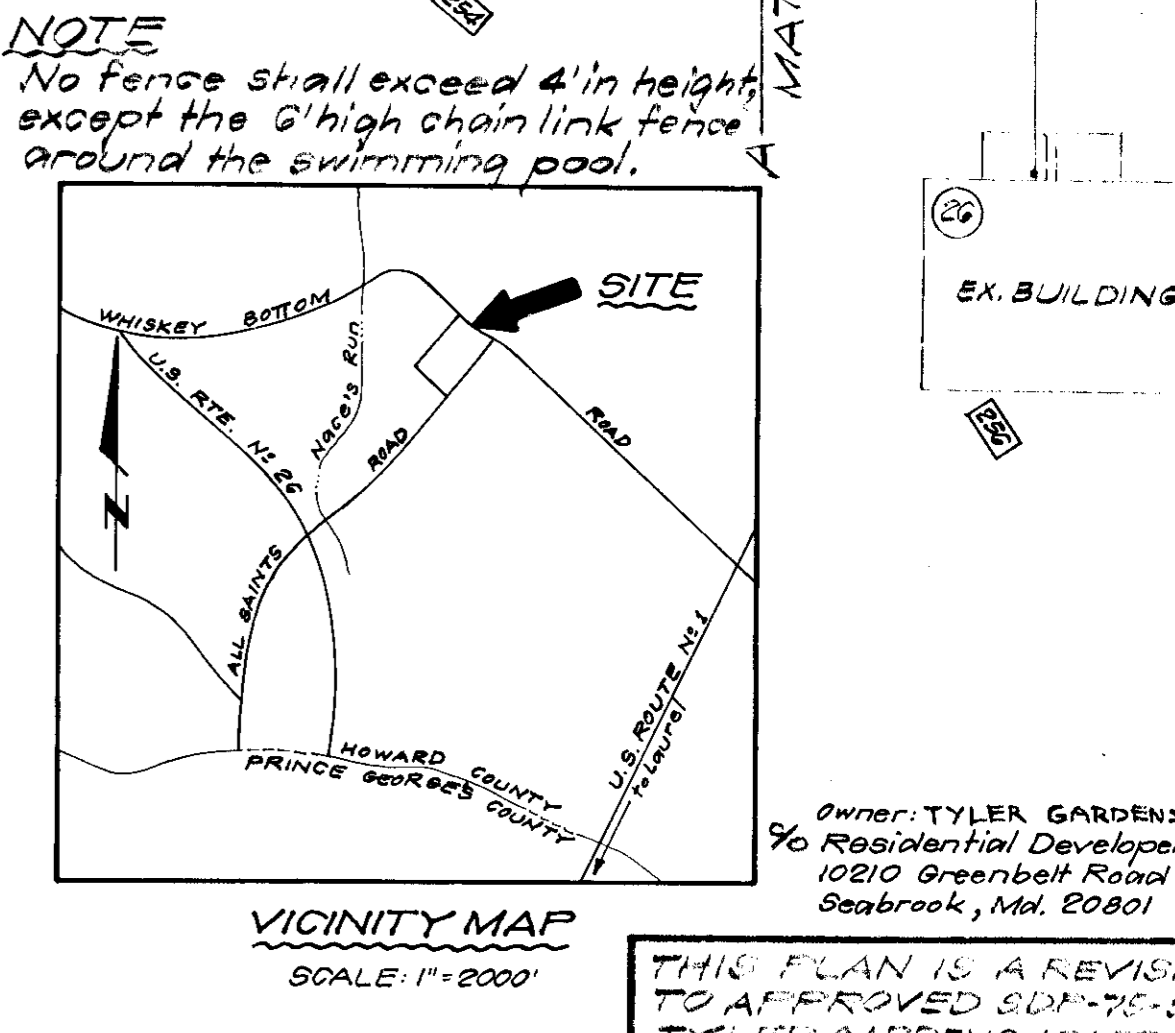
FILE NUMBER PLAN IDENTIFICATION	
DEVELOPER: RESIDENTIAL DEVELOPERS, INC. P.O. BOX 700 SEABROOK, MD, 20801	
PROGRESS DATA CHART DATE OF ORIGINAL SUBMISSION	DATE INITIALS
RETURNS	
REVISIONS DEC'D BY H. C. F. C.	
APPROVAL OF SITE PLAN	
BUILDING PERMIT APPLICATION REC'D	
BUILDING PERMIT APPLICATION RELY'D	
USE & OCCUPANCY APPLICATION REC'D	
USE & OCCUPANCY FIELD INSPECTION	
USE & OCCUPANCY PERMIT RELY'D	
APPROVED FOR PUBLIC WATER & PUBLIC SEWERAGE SYSTEMS HOWARD COUNTY HEALTH DEPARTMENT	
<i>[Signature]</i>	10/20/76
APPROVED FOR PUBLIC WATER, PUBLIC SEWERAGE AND STORM DRAINAGE SYSTEMS AND ROADS HOWARD COUNTY DEPARTMENT OF PUBLIC WORKS	
<i>[Signature]</i>	10/21/76
APPROVED FOR PUBLIC WATER, PUBLIC SEWERAGE AND STORM DRAINAGE SYSTEMS AND ROADS HOWARD COUNTY DEPARTMENT OF PUBLIC WORKS	
<i>[Signature]</i>	10/11/76

REVIEWED BY HOWARD	S.C.B. AND MENT'S	SITE ANALYSIS - L.O.S.
TECHNICAL REQUIREMENTS		TOTAL AREA 27.1 AC.
<i>[Signature]</i>	DATE: 10/1/76	AREA OF THIS SUBMISSION 13.6 AC.
U.S. SOIL CONSERVATION SERVICE		UNIT COUNTY - L.O.S.
		ALLOWABLE PROVIDED 205
		140
		COVERAGE - L.O.S.
		ALLOWABLE (20% PROVIDED) 237,140 #
		112,146 #
		PARKING - L.O.S.
		REQUIRED (1/12 RATIO) 224
		PROVIDED 497
		ZONING RA-1 (RES. APT'S)

LEGEND:
 Original Contours
 Finished Contours
 Entry Floor @ Front - Entry El. +252.8
 Basement Floor @ Rear - Bsm. El. +257.5
 Spot Elevation (Proposed) - 252
 Step Riser
 Concrete Walk
 Direction of Drainage
 Limit of this Submission

APPROVED
 PLANNING BOARD
 OF HOWARD COUNTY
 DATE 9-15-76

BDRM./BATHS	UNIT TABULATION			NO. OF UNITS	GROSS AREA (SQ. FT.)
	1 BDR.	2 BDR.	3 BDR.		
1	0	0	1	3	12,304
2	0	0	1	3	12,304
3	0	0	1	3	12,304
4	0	0	1	3	12,304
5	0	0	1	3	12,304
6	0	0	1	3	12,304
7	0	0	1	3	12,304
8	0	0	1	3	12,304
9	0	0	1	3	12,304
10	0	0	1	3	12,304
11	0	0	1	3	12,304
12	0	0	1	3	12,304
13	0	0	1	3	12,304
14	0	0	1	3	12,304
15	0	0	1	3	12,304
16	0	0	1	3	12,304
17	0	0	1	3	12,304
18	0	0	1	3	12,304
19	0	0	1	3	12,304
20	0	0	1	3	12,304
21	0	0	1	3	12,304
22	0	0	1	3	12,304
23	0	0	1	3	12,304
24	0	0	1	3	12,304
25	0	0	1	3	12,304
26	0	0	1	3	12,304
27	0	0	1	3	12,304
28	0	0	1	3	12,304
29	0	0	1	3	12,304
30	0	0	1	3	12,304
31	0	0	1	3	12,304
32	0	0	1	3	12,304
33	0	0	1	3	12,304
34	0	0	1	3	12,304
35	0	0	1	3	12,304
36	0	0	1	3	12,304
37	0	0	1	3	12,304
38	0	0	1	3	12,304
39	0	0	1	3	12,304
40	0	0	1	3	12,304
41	0	0	1	3	12,304
42	0	0	1	3	12,304
43	0	0	1	3	12,304
44	0	0	1	3	12,304
45	0	0	1	3	12,304
46	0	0	1	3	12,304
47	0	0	1	3	12,304
48	0	0	1	3	12,304
49	0	0	1	3	12,304
50	0	0	1	3	12,304
51	0	0	1	3	12,304
52	0	0	1	3	12,304
53	0	0	1	3	12,304
54	0	0	1	3	12,304
55	0	0	1	3	12,304
56	0	0	1	3	12,304
57	0	0	1	3	12,304
58	0	0	1	3	12,304
59	0	0	1	3	12,304
60	0	0	1	3	12,304
61	0	0	1	3	12,304
62	0	0	1	3	12,304
63	0	0	1	3	12,304
64	0	0	1	3	12,304
65	0	0	1	3	12,304
66	0	0	1	3	12,304
67	0	0	1	3	12,304
68	0	0	1	3	12,304
69	0	0	1	3	12,304
70	0	0	1	3	12,304
71	0	0	1	3	12,304
72	0	0	1	3	12,304
73	0	0	1	3	12,304
74	0	0	1	3	12,304
75	0	0	1	3	12,304
76	0	0	1	3	12,304
77	0	0	1	3	12,304
78	0	0	1	3	12,304
79	0	0	1	3	12,304
80	0	0	1	3	12,304
81	0	0	1	3	12,304
82	0	0	1	3	12,304
83	0	0	1	3	12,304
84	0	0	1	3	12,304
85	0	0	1	3	12,304
86	0	0	1	3	12,304
87	0	0	1	3	12,304
88	0	0	1	3	12,304
89	0	0	1	3	12,304
90	0	0	1	3	12,304
91	0	0	1	3	12,304
92	0	0	1	3	12,304
93	0	0	1	3	12,304
94	0	0	1	3	12,304
95	0	0	1	3	12,304
96	0	0	1	3	12,304
97	0	0	1	3	12,304
98	0	0	1	3	12,304
99	0	0	1	3	12,304
100	0	0	1	3	12,304
TOTALS	46	107	25	288	420,160

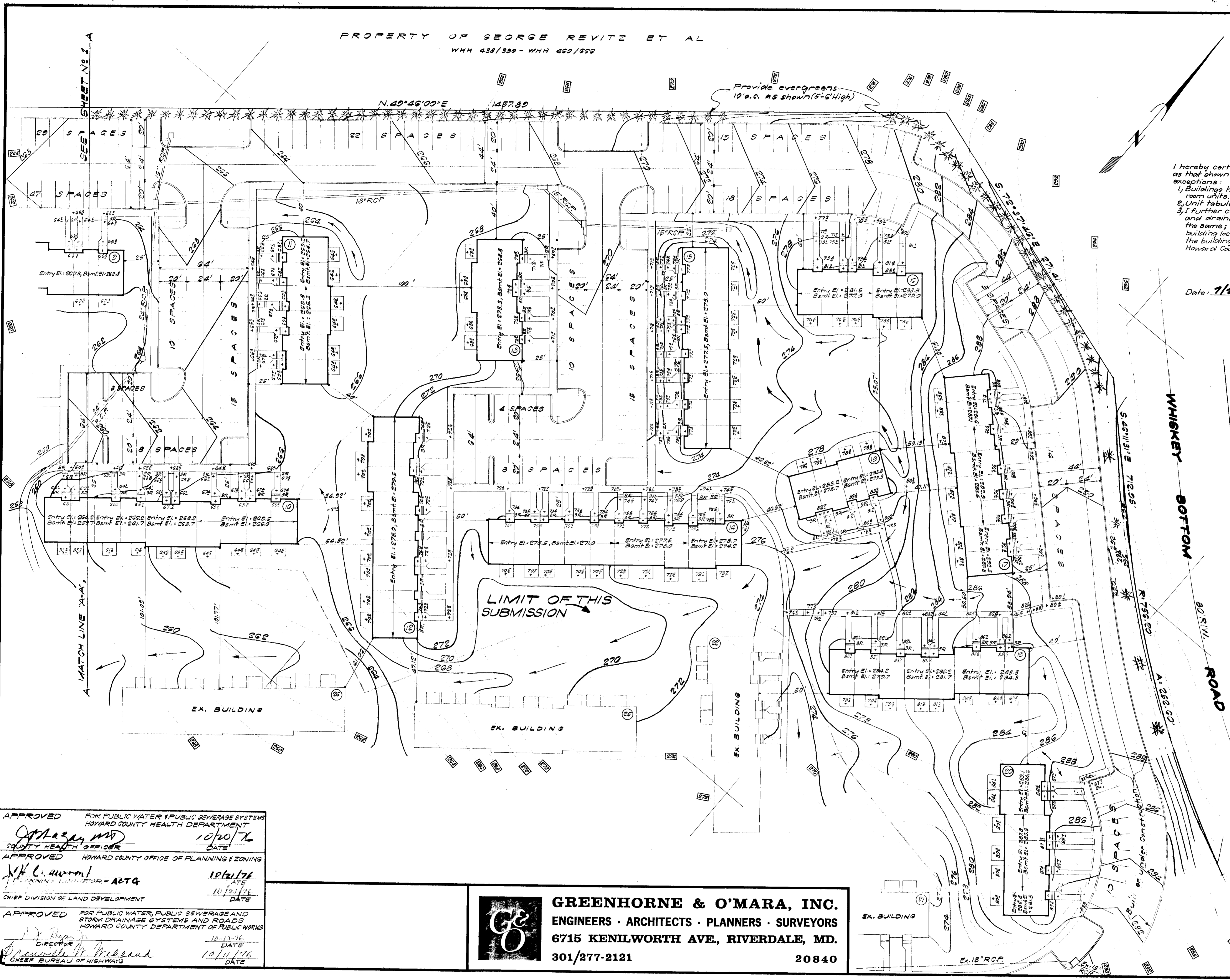


GREENHORNE & O'MARA, INC.
 ENGINEERS · ARCHITECTS · PLANNERS · SURVEYORS
 6715 KENILWORTH AVE., RIVERDALE, MD.
 301/277-2121 20840

NOTE: This plan is a revision of a previously approved site plan, done by: Walton-Madden-Cooper, Inc. Riverdale, Md. Revision due to substitution of two bedroom units with three bedroom units. All building elevations and utilities will not be effected by this revision. *[Signature]* are also not effected by this revision.

SITE DEVELOPMENT PLAN		DESIGN	Z.H.
TYLER GARDENS APARTMENTS		DRAWN	SCALE 1" = 30'
SECTION ONE, PARCEL "A"		CHECKED	SHEET No. 1 OF 2
6TH ELECTION DISTRICT		DATE	JULY 1976
HOWARD COUNTY, MARYLAND		JOB No.	172204
TAX MAP #47, PARCEL 166, P.B. 29, Folio 58		FILE No.	5034-X

PROPERTY OF GEORGE REVITZ ET AL
WHH 438/390 - WHH 420/620



ENGINEER'S CERTIFICATION

I hereby certify that the information contained herein is the same as that shown on previously approved S.D.P. 74-29, with the following exceptions:
 1. Buildings have been revised to reflect the addition of more 3 bedroom units.
 2. Unit tabulation now includes the 3 bedroom units added.
 3. I further certify that the sediment and erosion control measures and drainage areas as previously approved remain substantially the same; Road layouts & grades, storm drains, water and sewer building locations remain substantially the same as originally planned, the building setbacks comply with section 7-R-A-1 Districts of the Howard County Zoning Code.

Date: 7/21/76



Byron Tertzema
BYRON TERTZEMA

APPROVED
PLANNING BOARD
OF HOWARD COUNTY
DATE: 9-15-76

THIS PLAN IS A REVISION
TO APPROVED SDP-75-55,
TYLER GARDEN APARTMENTS

Owner: TYLER GARDENS, INC.
c/o Residential Developers, Inc.
10210 Greenbelt Road
Beebrook, Md. 20801.

SITE DEVELOPMENT PLAN
TYLER GARDENS APARTMENTS
SECTION ONE, PARCEL "A"
6TH ELECTION DISTRICT
HOWARD COUNTY, MARYLAND

APPROVED FOR PUBLIC WATER & PUBLIC SEWERAGE SYSTEMS
HOWARD COUNTY HEALTH DEPARTMENT
[Signature] 10/20/76
COUNTY HEALTH OFFICER DATE

APPROVED HOWARD COUNTY OFFICE OF PLANNING & ZONING
[Signature] 10/21/76
PLANNING COMMISSIONER - ACTG DATE

CHIEF DIVISION OF LAND DEVELOPMENT
[Signature] 10/14/76
DIRECTOR DATE

APPROVED FOR PUBLIC WATER, PUBLIC SEWERAGE AND
STORM DRAINAGE SYSTEMS AND ROADS
HOWARD COUNTY DEPARTMENT OF PUBLIC WORKS
[Signature] 10/14/76
DIRECTOR DATE

[Signature] 10/14/76
CHIEF BUREAU OF HIGHWAYS DATE



GREENHORNE & O'MARA, INC.
ENGINEERS · ARCHITECTS · PLANNERS · SURVEYORS
6715 KENILWORTH AVE., RIVERDALE, MD.
301/277-2121 20840

DESIGN	TAX MAP #47, PARCEL 166 P.B. 29, FOLIO 5B
Z.H. DRAWN	SCALE 1"=30'
J.W.W. CHECKED	SHEET No. 2 OF 2
July, 1976 DATE	172204 JOB No. 5634-X. FILE No.

SDP-77-08