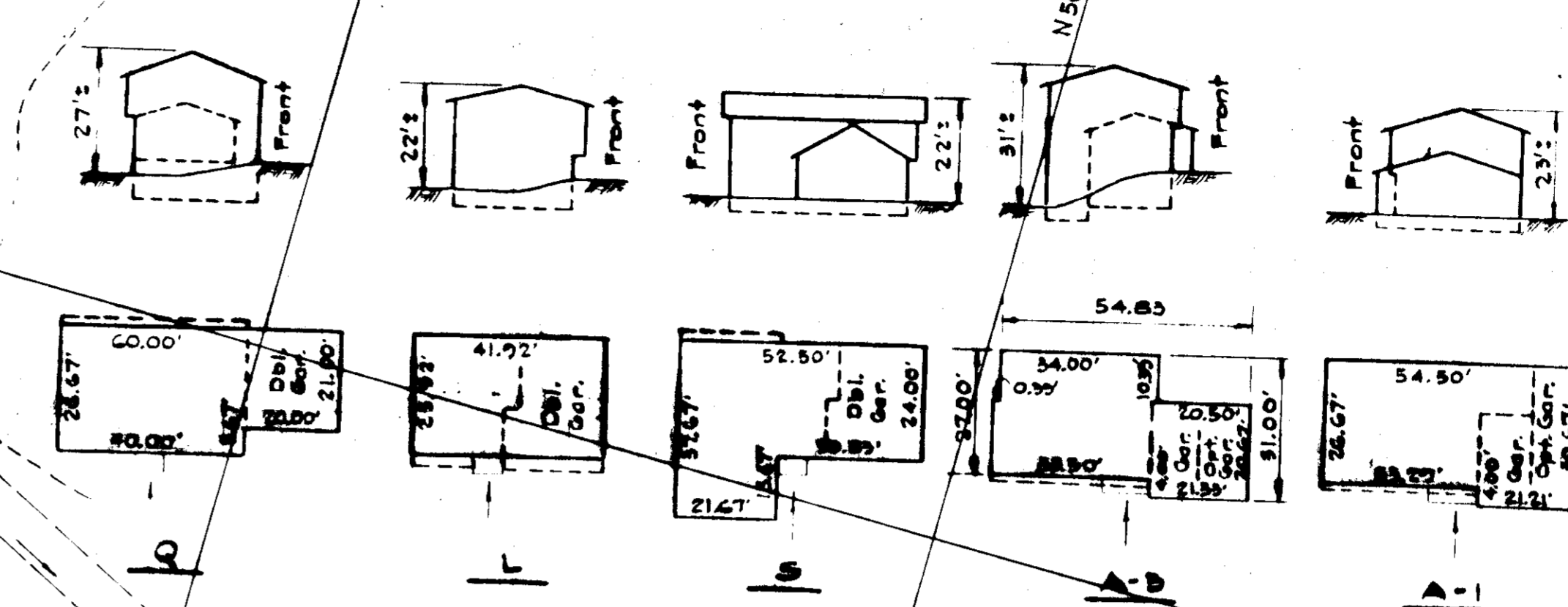
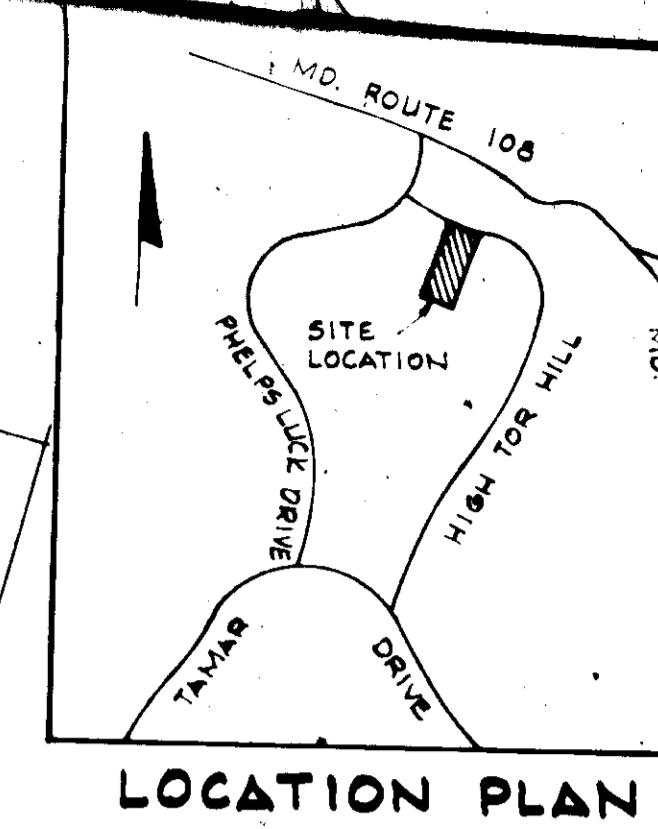


**GENERAL NOTES**

- All coordinates are based on Maryland State Grid System. Elevations are based on the U.S. Coast and Geodetic Survey Mean Sea Level Datum of 1929.
- The lots shown on this plan are covered by Final Development Plan Phase 77A recorded in Plat Book 20 Folios 95 to 117.
- The area covered in this submission is located on Tax Map No. 50.
- The total area included in this plan is 0.600 Acres.
- The land included in this plan is zoned New Town (S.F.M.D.).
- Building coverage varies from 10% to 24%.
- For bearings and distances of individual lot lines, see record plat recorded in Plat Book 18 Folio 51.
- All roadways shown are public and existing.
- Any damage to public right-of-way or paving must be corrected at Developers expense. All materials and construction shall be in accordance with the Howard County Road Construction Code and Standard Specifications.

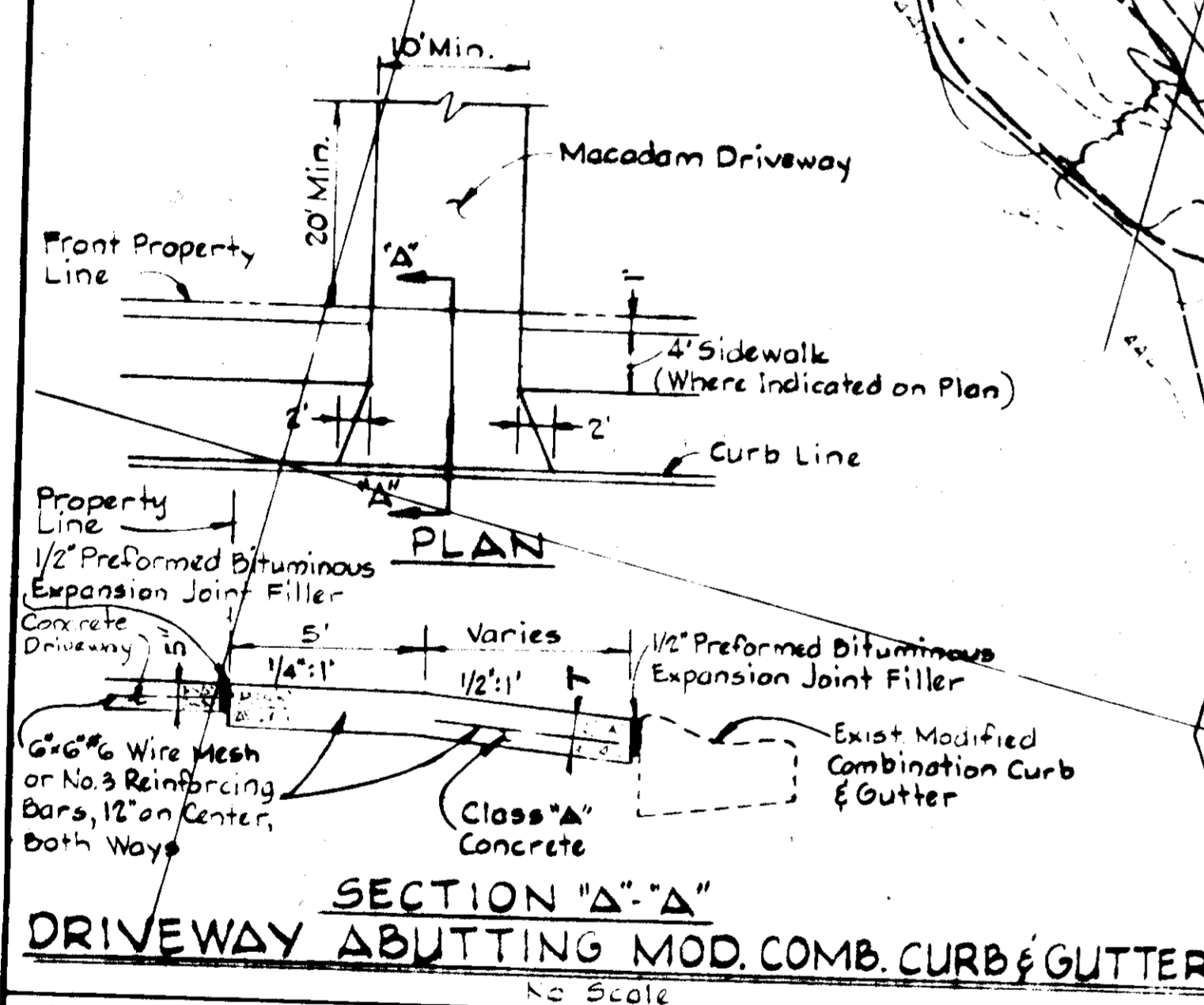
**LEGEND**

- Contour Interval 2 Ft.
- Existing Contours - - - - - 450
- Proposed Contours - - - - - 450
- Spot Elevations 50.5
- Direction of Drainage
- Yard Requirements:  
Front - 30' on 60' Wide Streets  
20' on 50' Wide Streets  
Side - 7.5' (Min.)
- 50 Year Flood Plain Elev. 450.0



NOTE: The Sediment Control Plan for this site is the same as that for the Village of Longreach, Section I, Area I, Lots 290 thru 338 (SDP-76-32C) and shall be adhered to as approved.

APPROVED  
DIVISION OF LAND DEVELOPMENT  
AND TRANSPORTATION PLANNING  
HOWARD COUNTY, MARYLAND  
DATE 5-12-76



APPROVED FOR PUBLIC WATER AND PUBLIC SEWERAGE SYSTEMS, HOWARD COUNTY HEALTH DEPARTMENT  
COUNTY HEALTH OFFICER DATE 6/8/76

APPROVED: HOWARD COUNTY OFFICE OF PLANNING AND ZONING  
PLANNING DIRECTOR DATE 6/21/76

APPROVED: FOR PUBLIC WATER, PUBLIC SEWER AND STORM DRAINAGE SYSTEMS AND ROADS, HOWARD COUNTY DEPARTMENT OF PUBLIC WORKS  
DIRECTOR DATE 6/17/76

**ROUSE INVESTING COMPANY**  
OWNER  
10275 LITTLE PATUXENT PARKWAY  
COLUMBIA, MARYLAND 21043

**WHITMAN, REQUARDT & ASSOCIATES**  
ENGINEERS  
1504 ST. PAUL STREET  
BALTIMORE MARYLAND 21202

**WASHINGTON HOMES, INC.**  
BUILDER  
6192 OXON HILL ROAD  
SUITE 400  
OXON HILL, MARYLAND 20022

No.	DATE	DESCRIPTION OF REVISIONS
<p><b>COLUMBIA</b> <b>SITE PLAN</b> FOR <b>VILLAGE OF LONGREACH</b> SECTION I AREA I REVISION TO APPROVED SDP-76-32C LOTS 329, 331 &amp; 332</p> <p>SHEET 1 OF 1</p> <p>ELECTION DISTRICT NO. 6, HOWARD COUNTY, MARYLAND DATE: February 2, 1976</p> <p>SCALE: 1" = 50'</p> <p>SDP-76-81c</p>		

