

NOTE: TOTAL DRAINAGE AREA TO 15" CMP = 3.9 ACRES
 $Q_{10} = 5.8 \text{ cfs}$
 $V_{out} = 4.7 \text{ fps}$

LOT 1
 PART OF THE ESTATE OF
 AUGUSTUS RIGGS, II
 RB. 90 FOLIO 19
 738/580
 (SDP-75-14 APPROVED 4-18-75)

PART OF THE ESTATE OF
 AUGUSTUS RIGGS, II
 180/343

MILLERS COUNTY OWNED & MAINTAINED ROAD
 (EXISTING INTERSECTION OF BUSBY PARK RD.)
 EX 30' ROW OWNED AND MAINTAINED BY HOWARD COUNTY

GENERAL NOTES

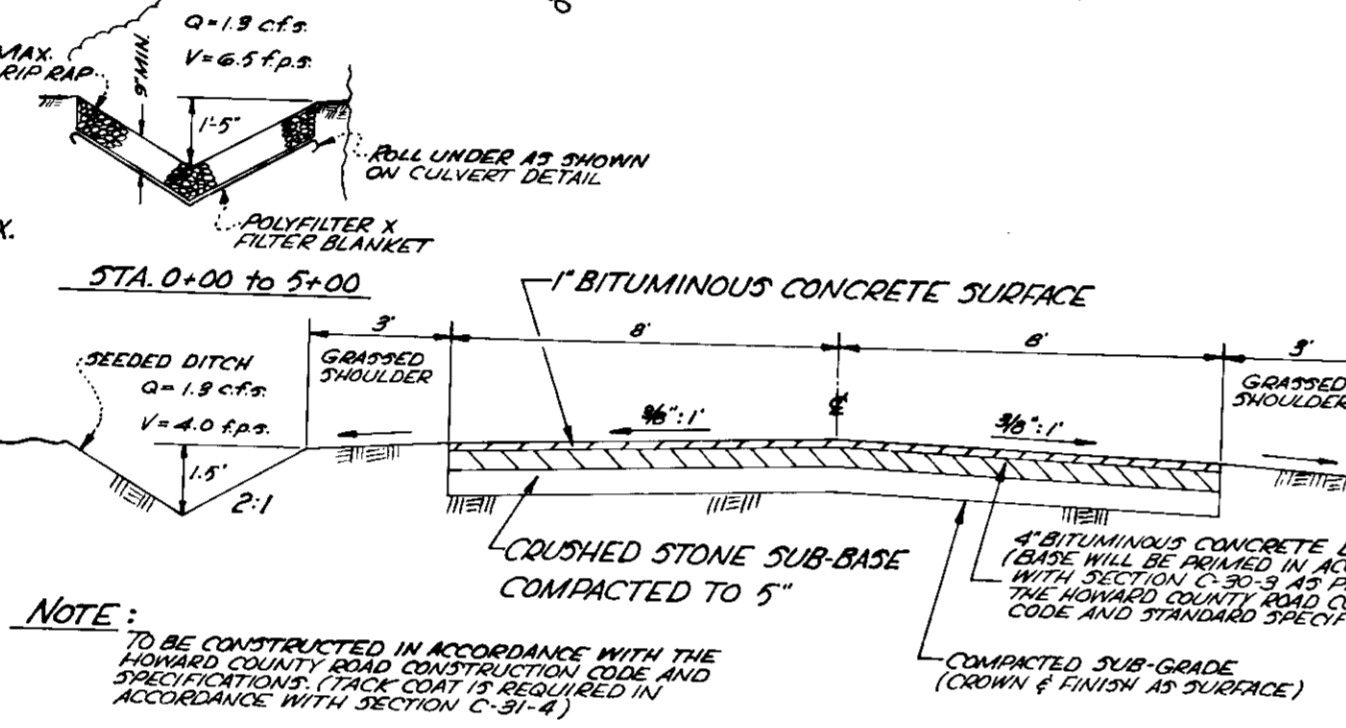
1. PLANNED CONSTRUCTION: AN UNMANNED MICROWAVE TOWER SITE TO INCLUDE A 200', 3 LEG, SELF-SUPPORTING STEEL TOWER AND AN 8'x12' PREFABRICATED FRAME EQUIPMENT BUILDING. ACCESS ROAD SHOWN IS A SERVICE TYPE TO BE USED APPROX. ONE DAY PER MONTH FOR ROUTINE MAINTENANCE CHECKS.
2. PARKING AREA PROVIDED FOR MAINTENANCE VEHICLE.
3. NO PRIVATE WATER AND NO PRIVATE SEWER WILL BE UTILIZED ON THIS PROPERTY.
4. AREA OF PARCEL: 1.76677 ACRES
5. PRESENT ZONING: R-40
6. FLOOR SPACE OF EQUIPMENT BLDG.: 96 SQ. FT.
7. PLAT REFERENCE: RB CMP 3403 & LOT 2, PART OF THE ESTATE OF AUGUSTUS RIGGS, II.
8. ALL CONSTRUCTION MATERIALS AND DETAILS SHALL BE IN ACCORDANCE WITH THE LATEST REVISIONS OF THE HOWARD COUNTY ROAD CONSTRUCTION CODE AND STANDARD SPECIFICATIONS.
9. PROPOSED GRADE CONTOURS REPRESENT FINISHED GRADES.
10. CONTRACTOR SHALL MAKE ALLOWANCES TO SUBGRADE FOR TOPSOIL, PAVING AND OTHER SURFACE FINISHES AS REQUIRED.
11. TOWER BASE DIMENSIONS SHOWN ARE APPROX.
12. A SPECIAL PERMIT TO ERRECT AND OPERATE A 250' RADIO (MICROWAVE) TOWER IN A R-40 DISTRICT WAS GRANTED BY BOARD OF APPEALS OF HOWARD COUNTY - BA CASE NO. 859-C.

SEDIMENT CONTROL NOTES

1. THE DEVELOPER SHALL NOTIFY THE HOWARD SOIL CONSERVATION DISTRICT AT LEAST 24 HOURS PRIOR TO BEGINNING ANY CONSTRUCTION SHOWN HEREON.
2. SEED ALL DISTURBED AREAS ACCORDING TO THE FOLLOWING:
 - A. HARROW OR DISK AREAS TO BE SEEDED TO DEPTH OF 3" INCORPORATING THE FOLLOWING IN THE PROCESS:
 - a. GROUND AGRICULTURAL LIMESTONE @ 50#/1000 SQ. FT.
 - b. 10-10-10 FERTILIZER @ 25#/1000 SQ. FT.
3. SEED THE FOLLOWING MIXTURE BY CYCLONE SEEDER OR OTHER SUITABLE MEANS
 - a. 1 1/2" KENTUCKY 31 TALL FESCUE PER 1000 SQ. FT.
 - b. 7 1/2" KOREAN LESPEDEZA PER 1000 SQ. FT.
4. RAKE SEED VERY LIGHTLY TO ACHIEVE SOME SOIL COVER.
5. MULCH WITH WEED FREE, SMALL GRAIN STRAW AT 75 # PER 1000 SQ. FT.
6. ALL DITCHES AND SWALES (AFTER SEEDING AND MULCHING) ARE TO BE COVERED WITH "CONWED" EROSION CONTROL NETTING (1/2" x 1/2" SQ. OPENING) AND TIED DOWN WITH STAPLES.

LEGEND

- DIVERSION DIKE (D.D.)
- STRAW BALE DIKE (S.B.D.)
- GRAVEL INTERCEPTOR DIKE (G.I.D.)
- INTERCEPTOR DIKE (I.D.)



TYPICAL ACCESS ROAD SECTION
 SCALE: 1"=4'

SEQUENCE OF OPERATIONS

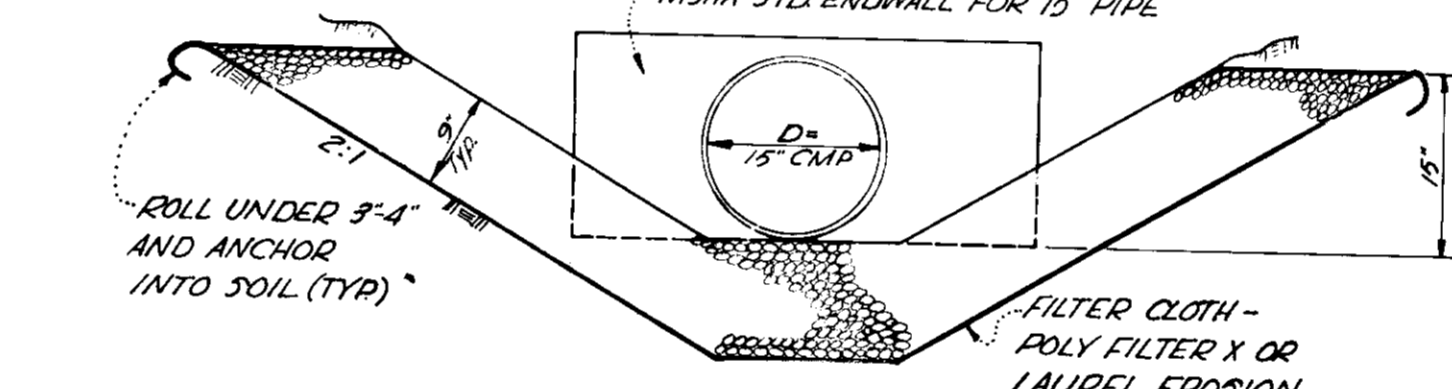
1. INSTALL 15" CMP AND DIVERT FLOW THROUGH PIPE CONCURRENT WITH BACKFILLING OPERATION FOLLOWING STRAW BALE DIKE INSTALLATION BELOW OUTFALL.
2. INSTALL ALL SEDIMENT CONTROL MEASURES PRIOR TO INITIAL GRADING OF SITE.
3. PROCEED WITH GRADING AND CONSTRUCTION AS SHOWN ON THIS PLAN.
4. STABILIZE ALL UNPAVED AREAS IN ACCORDANCE WITH SEDIMENT CONTROL NOTES.
5. ALL SEDIMENT CONTROL MEASURES CAN BE REMOVED WHEN CONTRIBUTING AREAS ARE STABILIZED.

AREA TABULATION

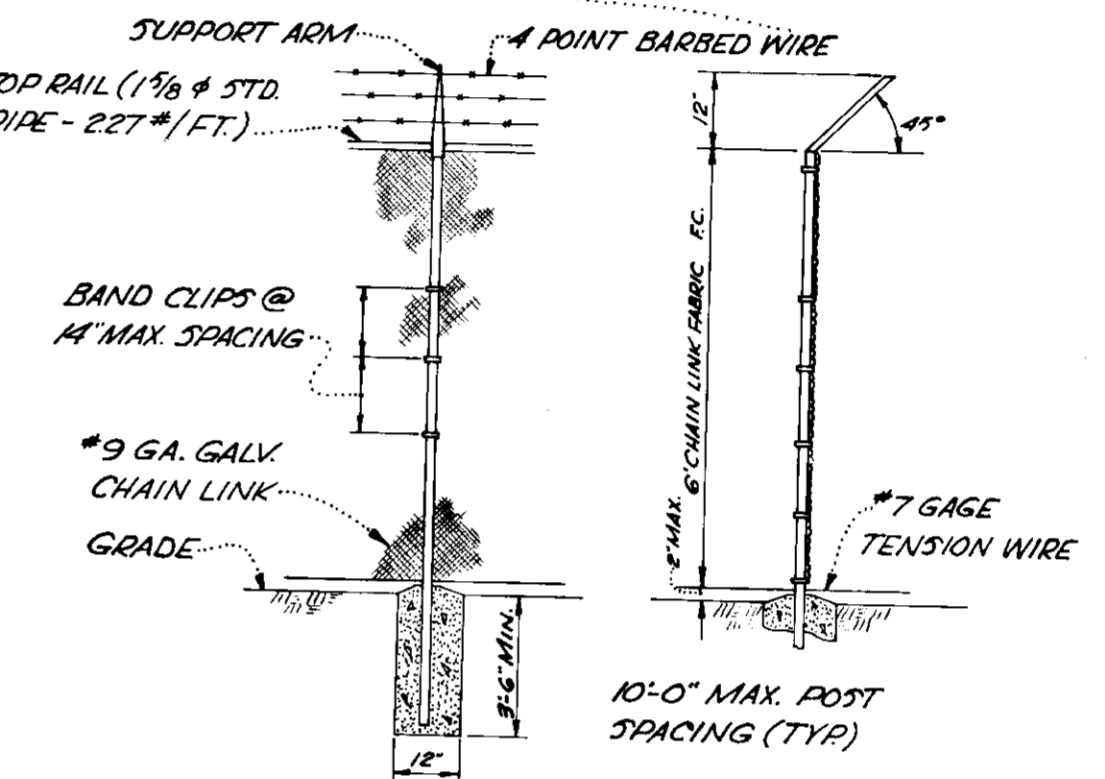
PAVING	- 13,815 SF
VEGETATED	- 24,651 SF
TOTAL DISTURBED	- 38,466 SF
UNDISTURBED	- 38,494 SF
TOTAL SITE	- 76,960 SF

PLAN SCALE: 1"=80'
 CONTOUR INTERVAL: 2'

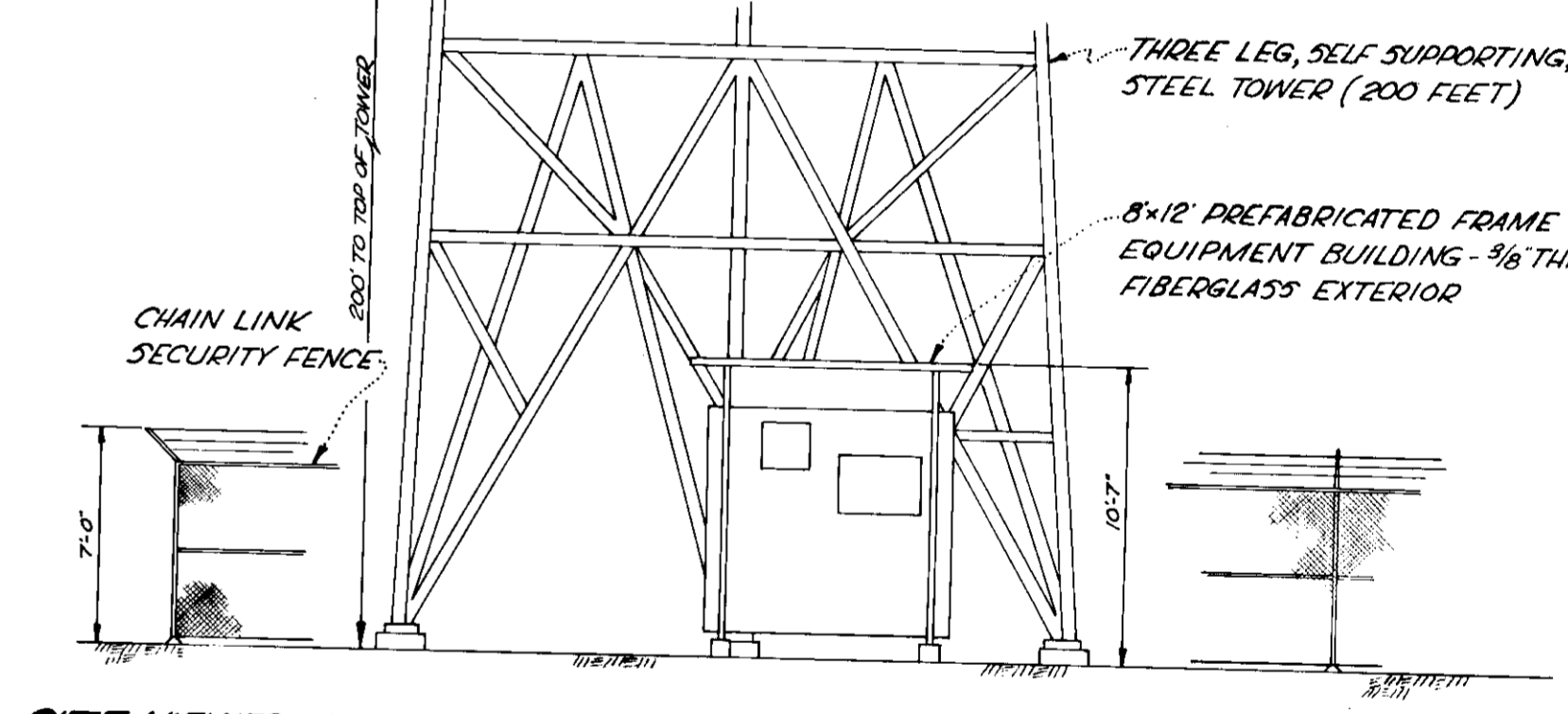
NOTE: TO BE CONSTRUCTED IN ACCORDANCE WITH THE HOWARD COUNTY ROAD CONSTRUCTION CODE AND STANDARD SPECIFICATIONS. A SPECIAL PERMIT TO ERRECT AND OPERATE A 250' RADIO (MICROWAVE) TOWER IN A R-40 DISTRICT WAS GRANTED BY BOARD OF APPEALS OF HOWARD COUNTY - BA CASE NO. 859-C.



RIP-RAP DETAIL
 NO SCALE



TYPICAL LINE POST FOR SECURITY FENCE
 NO SCALE



SITE VIEWED FROM SOUTH OF CONSTRUCTION AREA LOOKING NORTH
 NO SCALE

APPROVED
 DIVISION OF LAND DEVELOPMENT
 AND TRANSPORTATION PLANNING
 HOWARD COUNTY, MARYLAND
 DATE: 5-12-76
 JUNE

OWNER-DEVELOPER
 BALTIMORE & OHIO RAILROAD COMPANY
 2 NORTH CHARLES STREET
 BALTIMORE, MARYLAND 21201
 (301) 237-3971

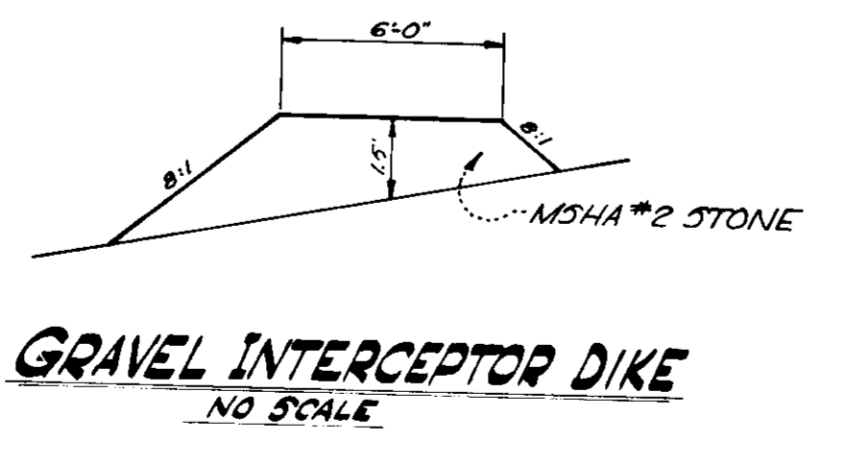
ATTORNEY
 ROBERT E. WIEDER
 3691 SARAH'S LANE
 ELLICOTT CITY, MARYLAND 21043
 (301) 465-4321

DEVELOPER'S CERTIFICATE
 WE CERTIFY THAT ALL DEVELOPMENT AND/OR CONSTRUCTION WILL BE DONE ACCORDING TO THIS PLAN OF DEVELOPMENT AND PLAN FOR EROSION AND SEDIMENT CONTROL, AND WE ALSO AUTHORIZE PERIODIC ON-SITE INSPECTION BY THE HOWARD SOIL CONSERVATION DISTRICT OR THEIR AUTHORIZED AGENTS, AS ARE DEEMED NECESSARY. DEVIATION FROM THIS PLAN WILL NOT BE MADE UNLESS AUTHORIZED BY THE HOWARD SOIL CONSERVATION DISTRICT.

R. S. Henry - Planning Eng. 4/14/76
 BALTIMORE & OHIO RAILROAD COMPANY DATE

ENGINEER'S CERTIFICATE
 I CERTIFY THAT THIS PLAN FOR EROSION AND SEDIMENT CONTROL REPRESENTS A PRACTICAL AND WORKABLE PLAN BASED ON MY PERSONAL KNOWLEDGE OF THE SITE CONDITIONS AND THAT IT WAS PREPARED IN ACCORDANCE WITH THE REQUIREMENTS OF THE HOWARD SOIL CONSERVATION DISTRICT.

Thomas H. Wilby 4/13/76
 SIGNATURE DATE



GRAVEL INTERCEPTOR DIKE
 NO SCALE

DEWBERRY, NEALON & DAVIS
 ENGINEERS, ARCHITECTS,
 PLANNERS & SURVEYORS
 1901 MONTGOMERY VILLAGE AVE.
 GAITHERSBURG, MARYLAND
 TEL. (301) 948-4120

THIS DEVELOPMENT PLAN IS APPROVED FOR SOIL EROSION AND SEDIMENT CONTROL BY THE HOWARD SOIL CONSERVATION DISTRICT.

Roland Zichow 5/27/76
 HOWARD SOIL CONSERVATION DISTRICT DATE

REVIEWED FOR HOWARD SOIL CONSERVATION DISTRICT AND MEETS TECHNICAL REQUIREMENTS.

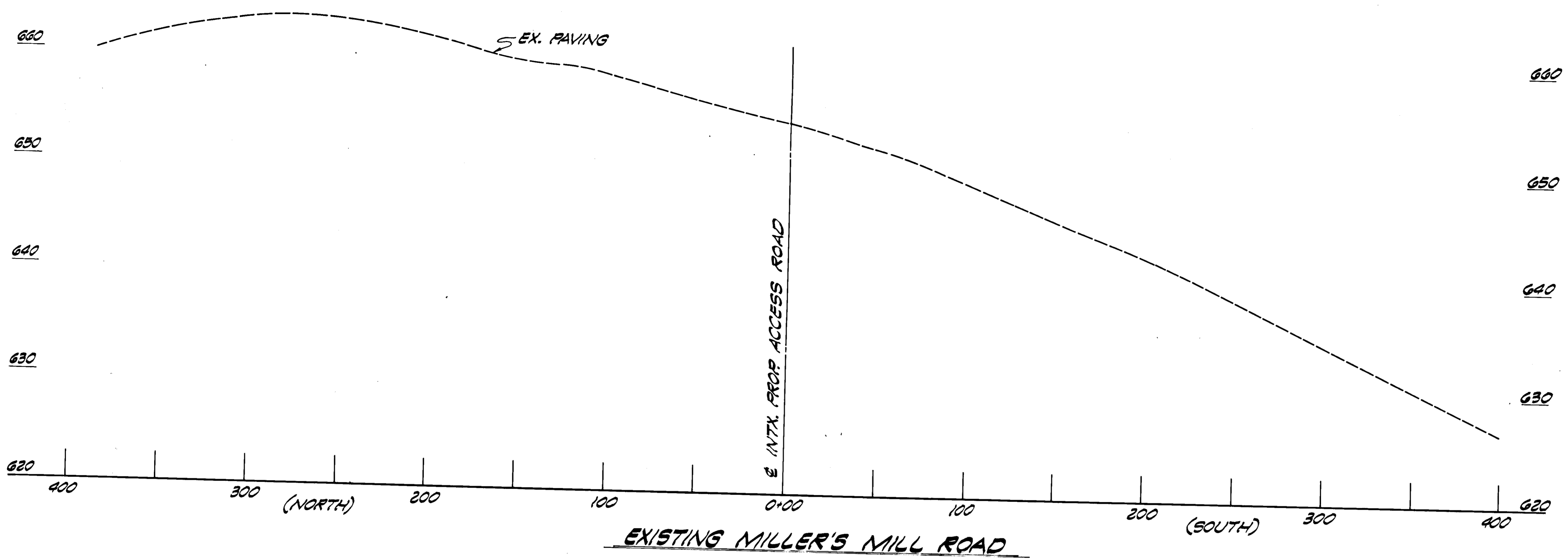
Eric Herman 5/27/76
 U.S. SOIL CONSERVATION SERVICE DATE

APPROVED:
 HOWARD COUNTY OFFICE OF PLANNING AND ZONING
 PLANNING DIRECTOR
 CHIEF, DIV. OF LAND DEVELOPMENT AND TRANSPORTATION PLANNING
 DATE: 4/21/76

APPROVED:
 HOWARD COUNTY DEPT. OF PUBLIC WORKS
 DIRECTOR
 CHIEF, BUREAU OF HIGHWAYS
 DATE: 5/4/76

APPROVED FOR NO WATER OR SEWER
 HOWARD COUNTY HEALTH DEPARTMENT
 (SEE GENERAL NOTE #3)
 COUNTY HEALTH OFFICER
 DATE: 6/1/76

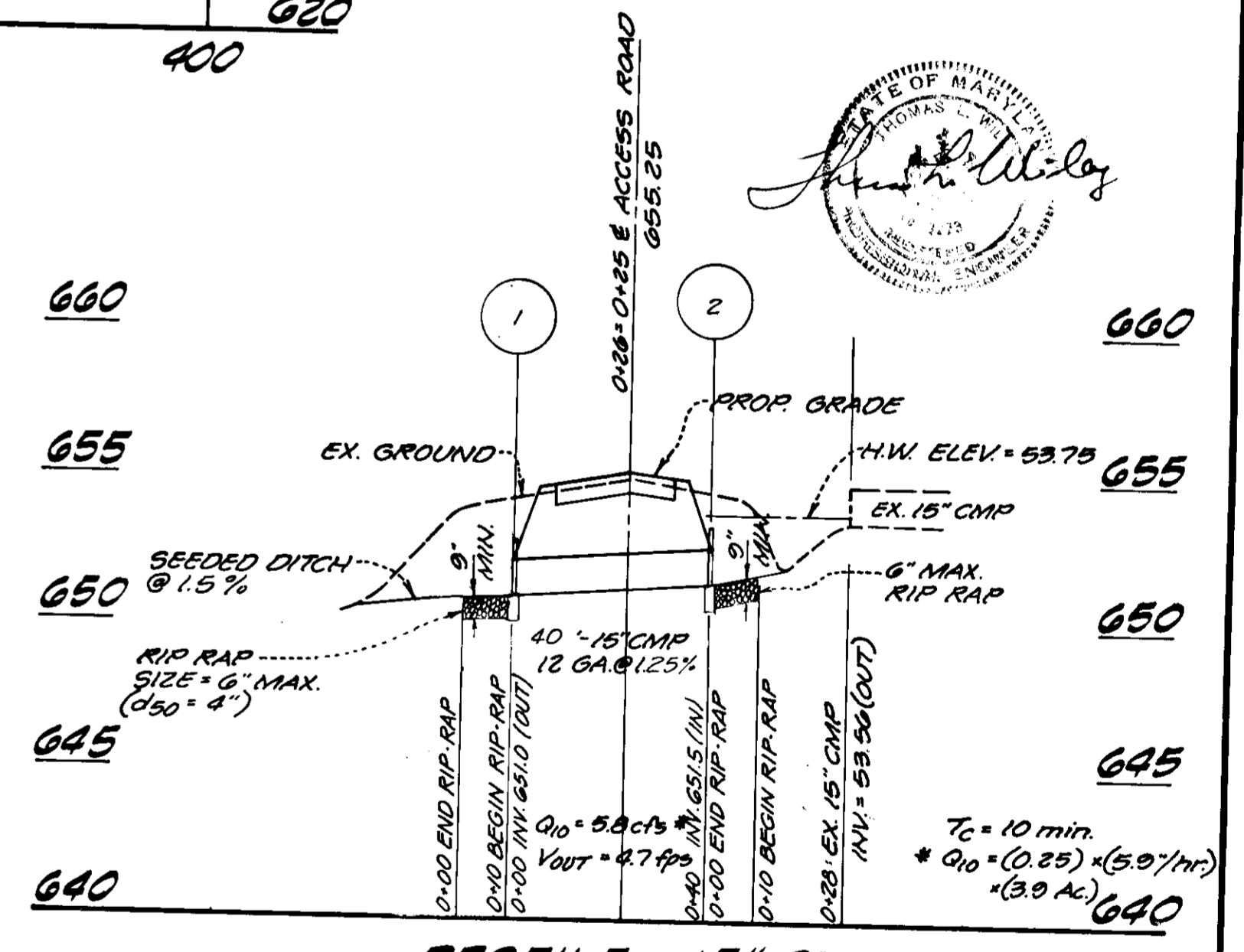
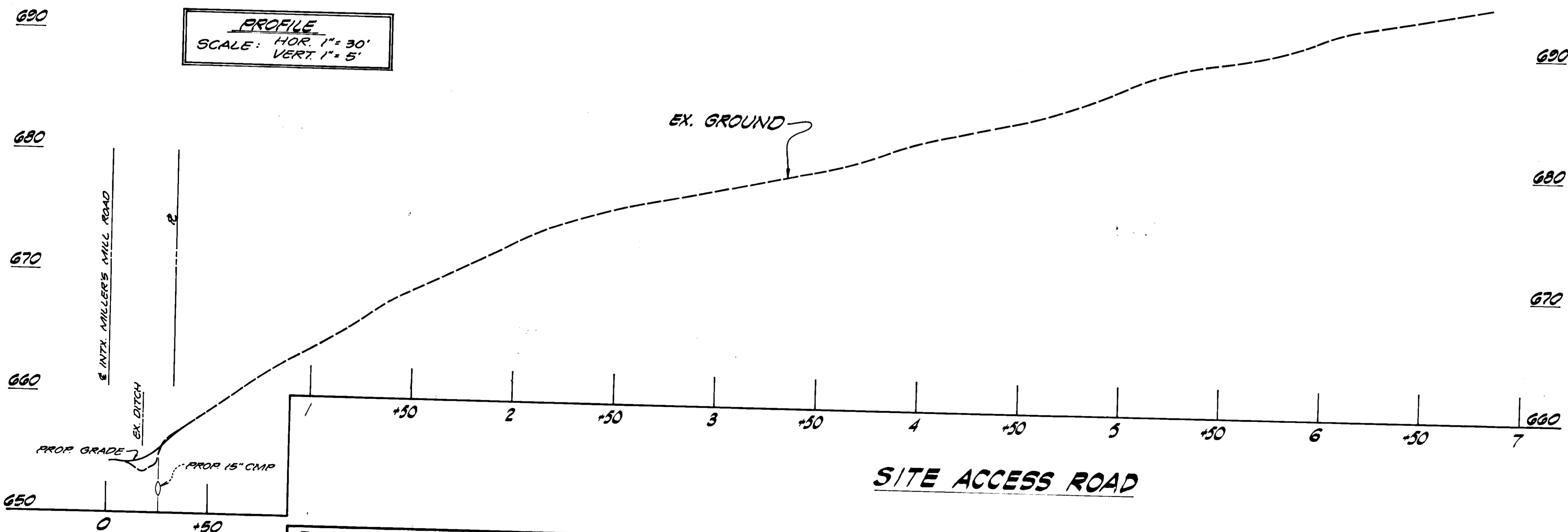
No.	DESCRIPTION	DATE	BY
	DEPT. OF PLANNING & ZONING SITE PLAN		
	FOR BALTIMORE & OHIO RAILROAD COMPANY MICROWAVE SITE (COOKSVILLE)		
	PARCEL LOCATED ON TAX ASSESSMENT MAP #8 AS PART OF PARCEL 96		
	4TH ELECTION DISTRICT HOWARD COUNTY, MARYLAND		
	SCALE: AS SHOWN		
	APRIL 1, 1976		



APPROVED
 DIVISION OF LAND DEVELOPMENT
 AND TRANSPORTATION PLANNING
 HOWARD COUNTY, MARYLAND
 DATE 5-12-76
J. Kelly

STRUCTURE SCHEDULE		
NO.	TYPE	REMARKS
1	12" ENDWALL	MSHA STD FOR 15" PIPE
2		

PROFILE
 SCALE: HOR. 1" = 30'
 VERT. 1" = 5'



PROFILE - 15" CMP
 SCALE: HOR. 1" = 30'
 VERT. 1" = 5'

NOTE: RUNOFF DATA FORMULATED TO BE COMPATIBLE WITH SOP 75-13 APRVD 4-18-75.

THIS DEVELOPMENT PLAN IS APPROVED FOR SOIL EROSION AND SEDIMENT CONTROL BY THE HOWARD SOIL CONSERVATION DISTRICT.
Robert Zahn
 HOWARD SOIL CONSERVATION DISTRICT 5/27/76 DATE

REVIEWED FOR HOWARD SOIL CONSERVATION DISTRICT AND MEETS TECHNICAL REQUIREMENTS.
Eric Herman
 U.S. SOIL CONSERVATION SERVICE 5/27/76 DATE

APPROVED:
 HOWARD COUNTY OFFICE OF PLANNING AND ZONING
 PLANNING DIRECTOR *W. J. ...* DATE 5/13/76
 CHIEF, DIV. OF LAND DEVELOPMENT AND TRANSPORTATION PLANNING

APPROVED:
 HOWARD COUNTY DEPT. OF PUBLIC WORKS
 DIRECTOR *...* DATE 5-1-76
 CHIEF, BUREAU OF HIGHWAYS

APPROVED FOR NO WATER OR SEWER
 HOWARD COUNTY HEALTH DEPARTMENT
 (SEE GENERAL NOTE #3)
 COUNTY HEALTH OFFICER DATE

NO.	DESCRIPTION	DATE	BY
REVISIONS			
DEPT. OF PLANNING & ZONING SITE PLAN			
FOR			
BALTIMORE & OHIO RAILROAD COMPANY			
MICROWAVE SITE (COOKSVILLE)			
PARCEL LOCATED ON TAX ASSESSMENT MAP 78 AS PART OF PARCEL 96			
4TH ELECTION DISTRICT HOWARD COUNTY, MARYLAND			
SCALE: AS SHOWN APRIL 1, 1976			