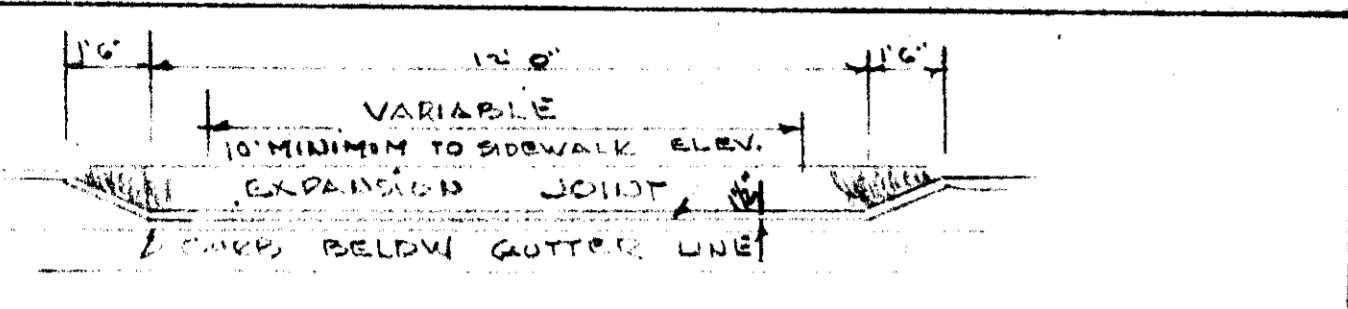
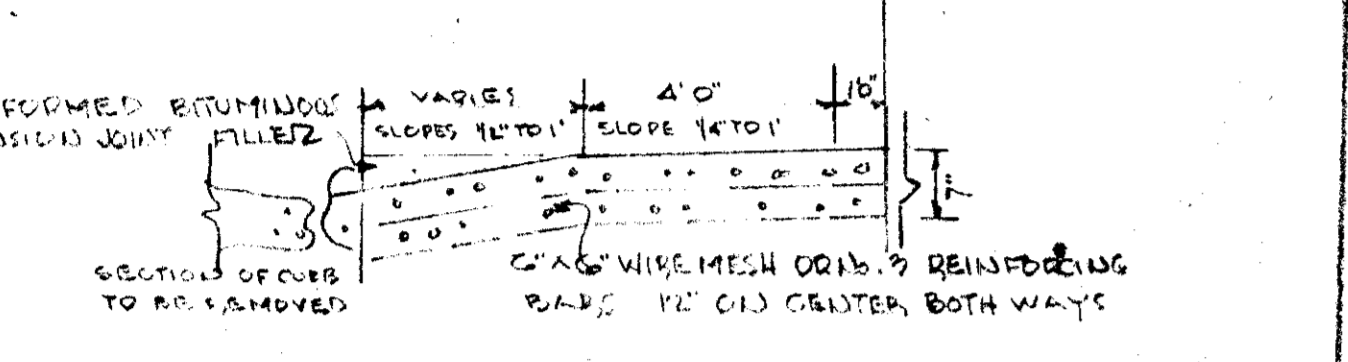


VICINITY MAP 1"=2000'



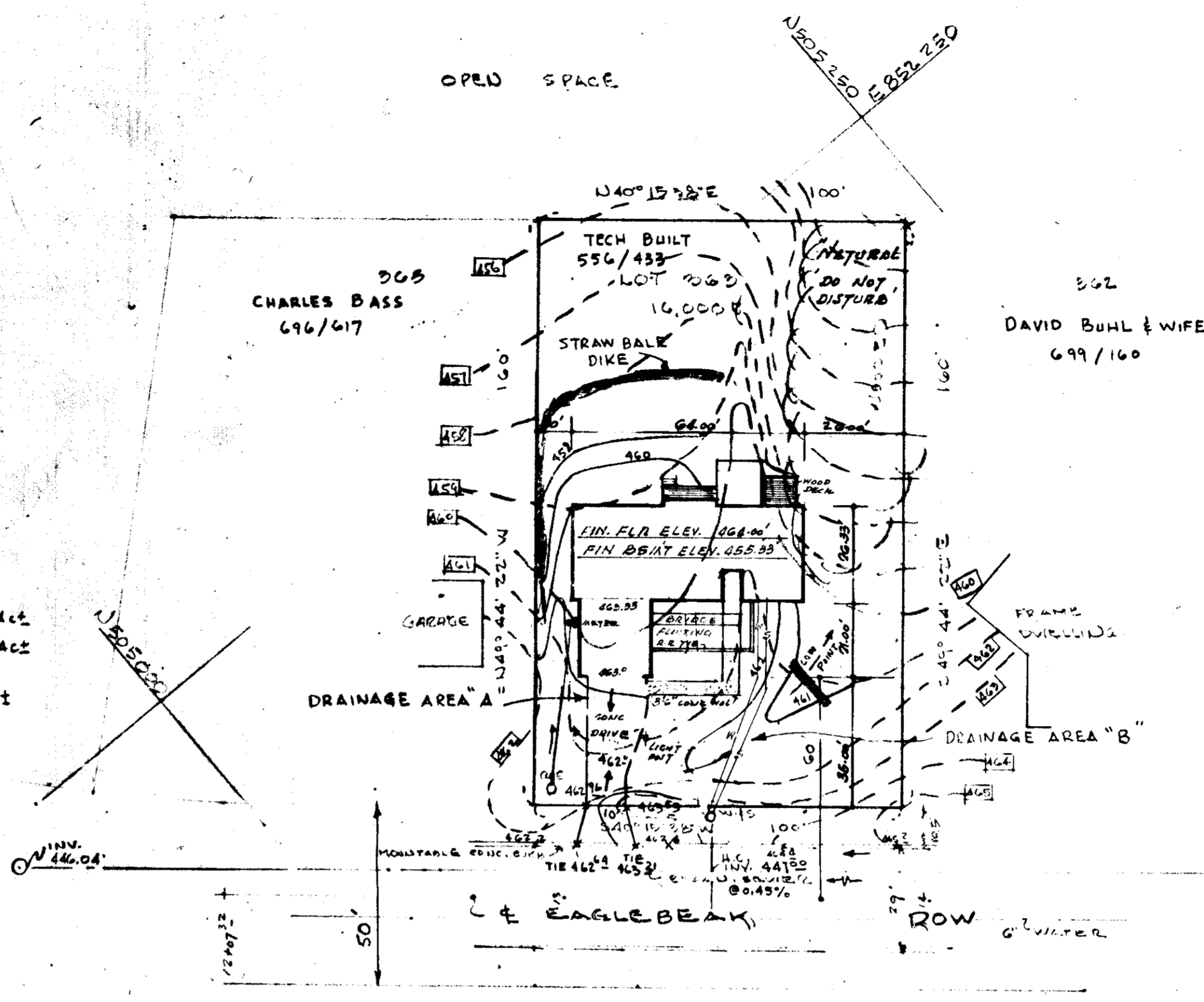
TYPICAL SECTION - CONCRETE PAVING



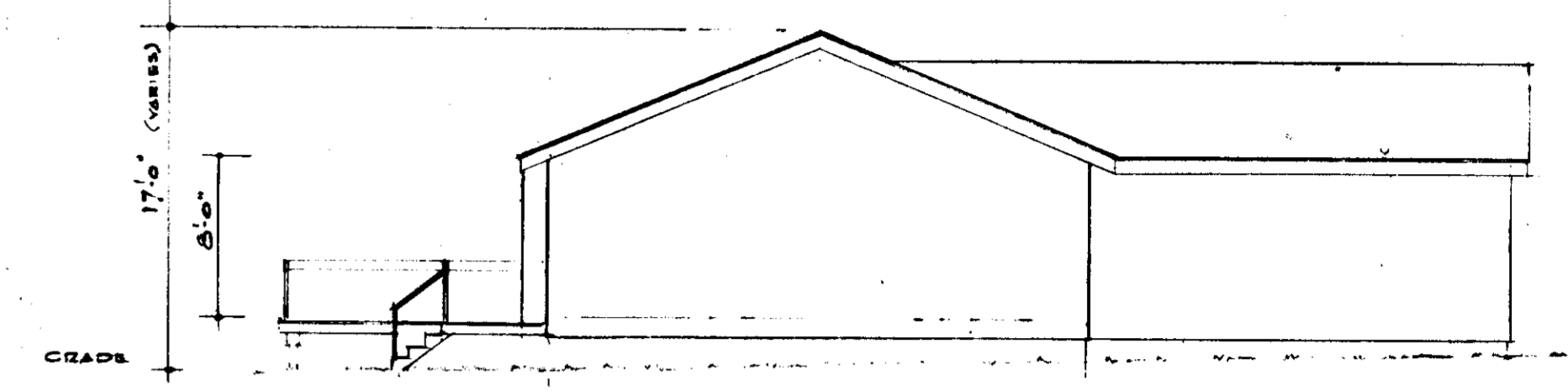
TYPICAL SECTION - DRIVEWAY PAVING

SITE ANALYSIS

- TOTAL AREA OF SITE = 0.37A c.t.
- TOTAL AREA TO BE GRADED A = 0.08A c.t.
B = 0.08A c.t.
C = 0.16A c.t.
- TOTAL AREA TO BE PAVED & ROOFED A = 0.04A c.t.
B = 0.04A c.t.
- TOTAL AREA UNDISTURBED = 0.21A c.t.



SITE PLAN SCALE 1/8"=1'-0"



PROFILE SCALE 1/4"=1'-0"

LEGEND
EXISTING CONTOURS SHOWN THUS 454' (1' INTERVALS)
PROPOSED CONTOURS SHOWN THUS 454' (1' INTERVALS)

VEGETATIVE COVER OPTIONS	SOODING NOTES
February 1 to May 1 1. Sod 2. Seed and mulch	1. APPLY 1000 LBS FERTILIZER @ 10000/SACRE C25#/10000
May 1 to August 1 1. Sod 2. Mulch, anchor, tool-then seed during next seed period.	2. APPLY GROUND AGRICULTURE LIMESTONE @ 4000#/ACRE (C20#/10000)
August 15 to November 1 1. Sod 2. Seed and mulch	3. INCORPORATE BOTH LIME AND FERTILIZER 11350 GAL. BY DISCING, FIRM UP AFTER WORKING.
November 1 to February 1 1. Sod-delay until next period if ground is frozen. 2. Mulch, anchor, tool-then seed during next seed period.	4. LAY SOIL TO A TIGHT FIT. ROLL TO ENSURE CONTACT WITH UNDERLYING SOIL WATER AS NECESSARY FOR 1ST TWO WHEELS (ASSUMED) TO ENSURE ESTABLISHMENT.

SEDIMENT CONTROL NOTES

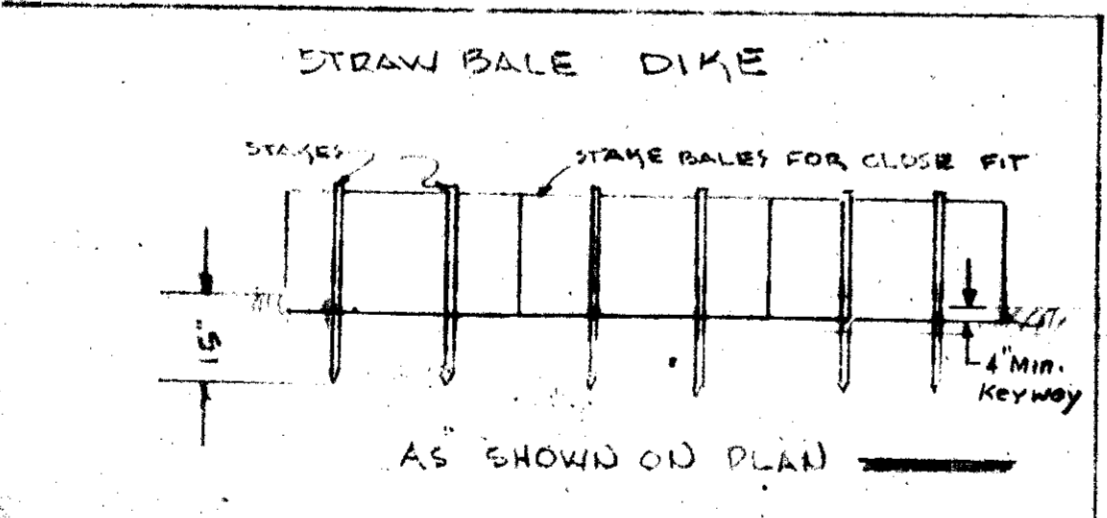
- Notify the Howard County Soil Conservation District at least 24 hours before starting any work. Phone 465-5000 Ext. 328-465-3180.
- All sediment control devices are to remain in place until permission for removal has been obtained from the Howard Soil Conservation District.
- Sediment control measures will be installed according to the plan prior to any other grading, clearing or disturbance of the existing surface of the site.
- Upon site inspection and maintenance of all sediment control measures and proper establishment of all planned vegetative measures will be the responsibility of the developer or his representative on the site on a continuing day to day basis.

PROCEDURE - PERMANENT SEEDING

Apply 50 lbs/1000 square foot of limestone.
Apply fertilizer (rate 25 lbs of 16X10X0 per 1000 square foot depending on the soil test.)
Scarify or disc fertilizer and limestone into soil depth of 3 inches.
Seed with 1/2 3/4 ball fescue at rate of 50 lbs/acre or other S.C.S. approved seeding plan.
Mulch with small grain straw 1.5 to 2 tons per acre (75 square feet-90/1000).
Anchor mulch with sprayed asphalt at 0.1 gal/square yard.

SEQUENCE OF CONSTRUCTION

- Install sediment control devices.
- Rough grade.
- Start construction.
- Final grade.
- Stabilize all areas.
- Finish construction.
- Remove all sediment control devices.



DENSITY CALCULATIONS
TOTAL NO OF RESIDENTIAL LOTS - 1
TOTAL ACREAGE OF LOT = 0.37A c.t.
TOTAL ACREAGE OF SUBMISSION = 0.37A c.t.

APPROVED
DIVISION OF LAND DEVELOPMENT
AND TRANSPORTATION PLANNING
HOWARD COUNTY, MARYLAND
DATE 3-15-76
J. N. Bowers, Inc.

Escoe residence Lot 303 Eaglebeak row date 3/7/76

john n. bowers, inc.
builders designers
Columbia, Maryland 21044

draw-no. SDR 76-68C
revisions

MCKINNS ASSOCIATES
INCORPORATED
231 N. W. 34th St.
OAKLAND, MARYLAND 21045
720-0060

ENGINEER

"I certify that this plan for erosion and sediment control represents a practical and workable plan based on my personal knowledge of the site conditions and that it was prepared in accordance with the requirements of the Howard Soil Conservation District."

John N. Bowers, Inc.
Signature of Engineer
3/1/76
Date

DEVELOPER

"I certify that all development and/or construction will be done according to this plan of development and plan for erosion and sediment control and I also authorize periodic on-site inspection by the Howard Soil Conservation District or their authorized agents, as are deemed necessary. Deviation from this plan will not be made unless authorized by the Howard Soil Conservation District."

John N. Bowers, Inc.
Signature of Developer
3/1/76
Date

APPLIED FOR HOWARD S.C.D. AND MEETS TECHNICAL REQUIREMENTS.

Eric V. Herman
Signature
4/2/76
Date

U.S. SOIL CONSERVATION SERVICE

THIS DEVELOPMENT PLAN IS APPROVED FOR SOIL EROSION AND SEDIMENT CONTROL BY THE HOWARD SOIL CONSERVATION DISTRICT.

Robert Zehm
Signature
4/2/76
Date

APPROVED: HOWARD SOIL CONSERVATION DISTRICT

APPROVED: For public water and public sewage systems, HOWARD COUNTY HEALTH DEPARTMENT

John N. Bowers, Inc.
Signature
4/19/76
Date

U.S. DEPARTMENT OF AGRICULTURE
OFFICE OF PLANNING AND CONTROL
NATIONAL EROSION CONTROL SERVICE
WASHINGTON, D.C. 20250

APPROVED: For public water, public sewerage and storm drainage systems and roads, HOWARD COUNTY DEPARTMENT OF PUBLIC WORKS

John N. Bowers, Inc.
Signature
4-8-76
Date

NOT TO SCALE

100' 300' 600' 900' 1200'

1/4" = 10'

1/4" = 1'