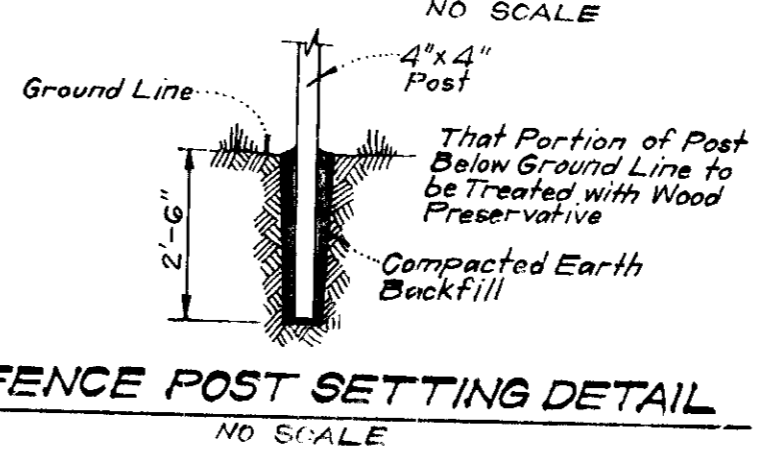
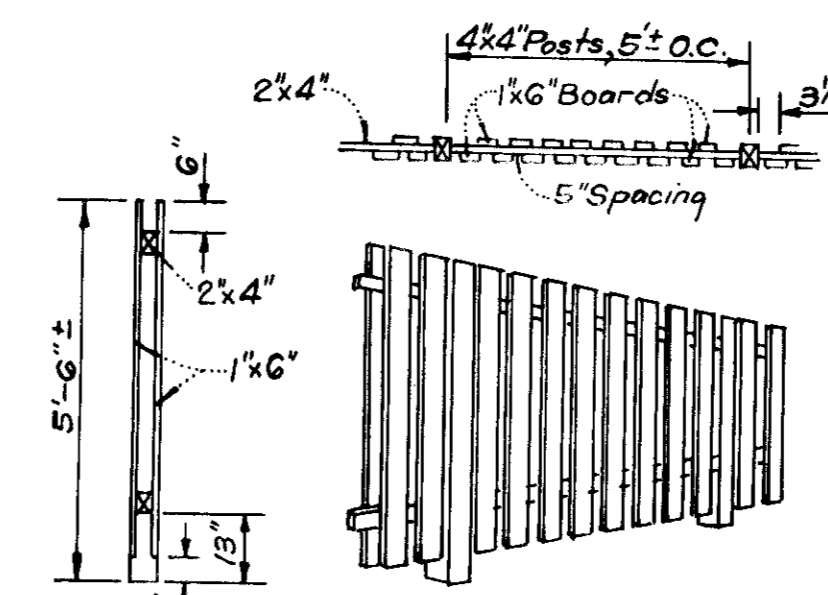
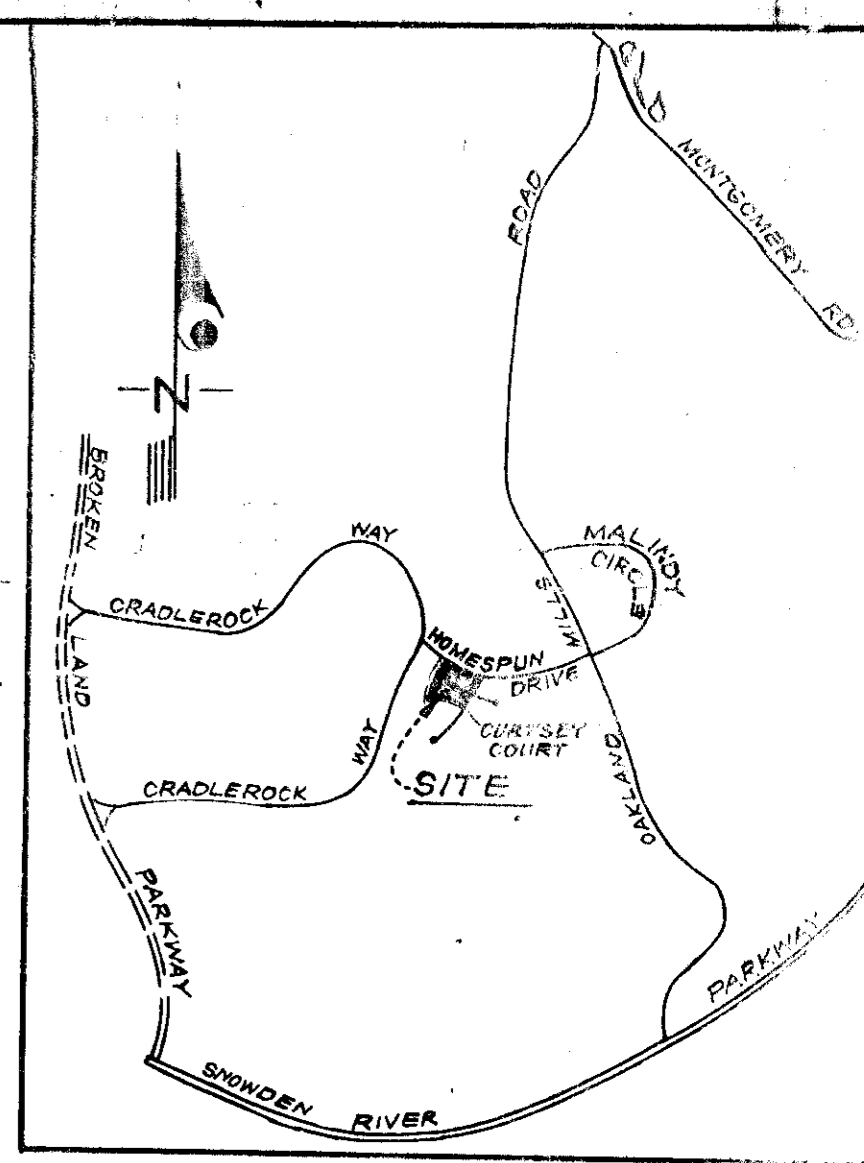


NOTE: Use Residential Driveway Entrance, Howard Co. Drawing #D-34 Pg. 89, Except Where Driveway Abuts Modified Combination Curb & Gutter.

NOTE: All materials and construction shall be in accordance with Howard County Road Construction Code.



- LEGEND**
- 1. Contour Interval 2 Ft.
 - 2. Existing Contours 340
 - 3. Proposed Contours 340
 - 4. Spot Elevations +40E
 - 5. Direction Of Drainage
 - 6. Yard Requirements: 30' on 65' Wide Street
Front - 20' on 50' Wide Streets
Side 75' (Min.)
 - 7. Existing Trees to be Retained
 - 8. Privacy Screen Fence

- GENERAL NOTES**
1. All coordinates are based on Maryland State Grid System. Elevations are based on the U.S. Coast and Geodetic Survey Mean Sea Level Datum of 1929.
 2. The Lots shown on this plan are covered by Final Development Plan Phase 14G recorded in Plat Book 28 Folios 42 to 56.
 3. The Area covered in this subdivision is located on Tax Map No. 3G.
 4. The total area included in this plan is 0.347 Acre.
 5. The land included in this plan is zoned New Town (S.F.M.D.).
 6. Building coverage is 12%.
 7. All roadways shown are public and are existing.
 8. Any damage to County owned rights-of-way or paving shall be corrected at the Developer's expense.

SURVEYOR'S CERTIFICATION

I hereby certify that the information contained hereon is the same as that shown on previously approved S.D.P. #76-57C, with the following exception:

1. House Type and grading has been revised on Lot 124.

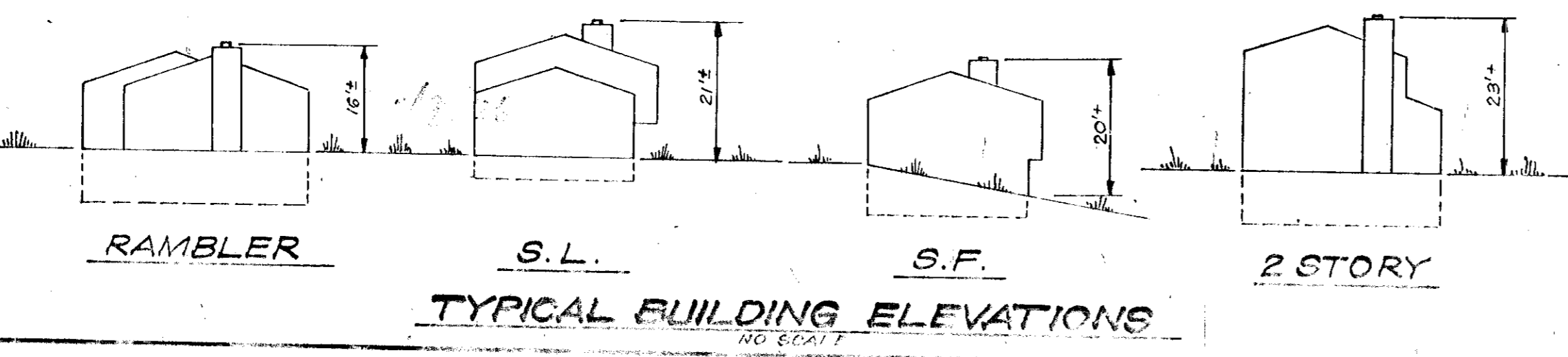
I further certify that the Sediment and Erosion Control measures, as previously approved, will not be effected, the grading remains substantially the same as originally planned, the building setbacks comply with those established in F.D.P. Phase 14G and the Lot configuration is geometrically the same as shown on the respective recorded subdivision plat.

12-5-75
DATE

Donald B. Sackett
DONALD B. SACKETT
Registered Land Surveyor
No. N-6053

APPROVED BY PUBLIC WATER AND PUBLIC SEWERAGE COMMISSION
APPROVED BY CLARK COUNTY HEALTH DEPARTMENT
APPROVED BY CLARK COUNTY PLANNING COMMISSION
APPROVED BY CLARK COUNTY BOARD OF ZONING

1-9-76
1/9/76
1-7-76
1/6/76



APPROVED
DIVISION OF LAND DEVELOPMENT
AND TRANSPORTATION PLANNING
HOWARD COUNTY, MARYLAND
DATE 12-24-75

CLARK • FINEROCK & SACKETT
ENGINEERS • PLANNERS • SURVEYORS

REVISOR: L.F.S.
DRAWN: M.V.C.
CHECKED: P.B.B.
DATE: 1975

REVISED SITE DEVELOPMENT PLAN
LOT 124
COLUMBIA
VILLAGE OF OWEN BROWN
SECTION 4 AREA 1
GENTLE WAY DISTRICT
HOWARD COUNTY, MARYLAND

10/1