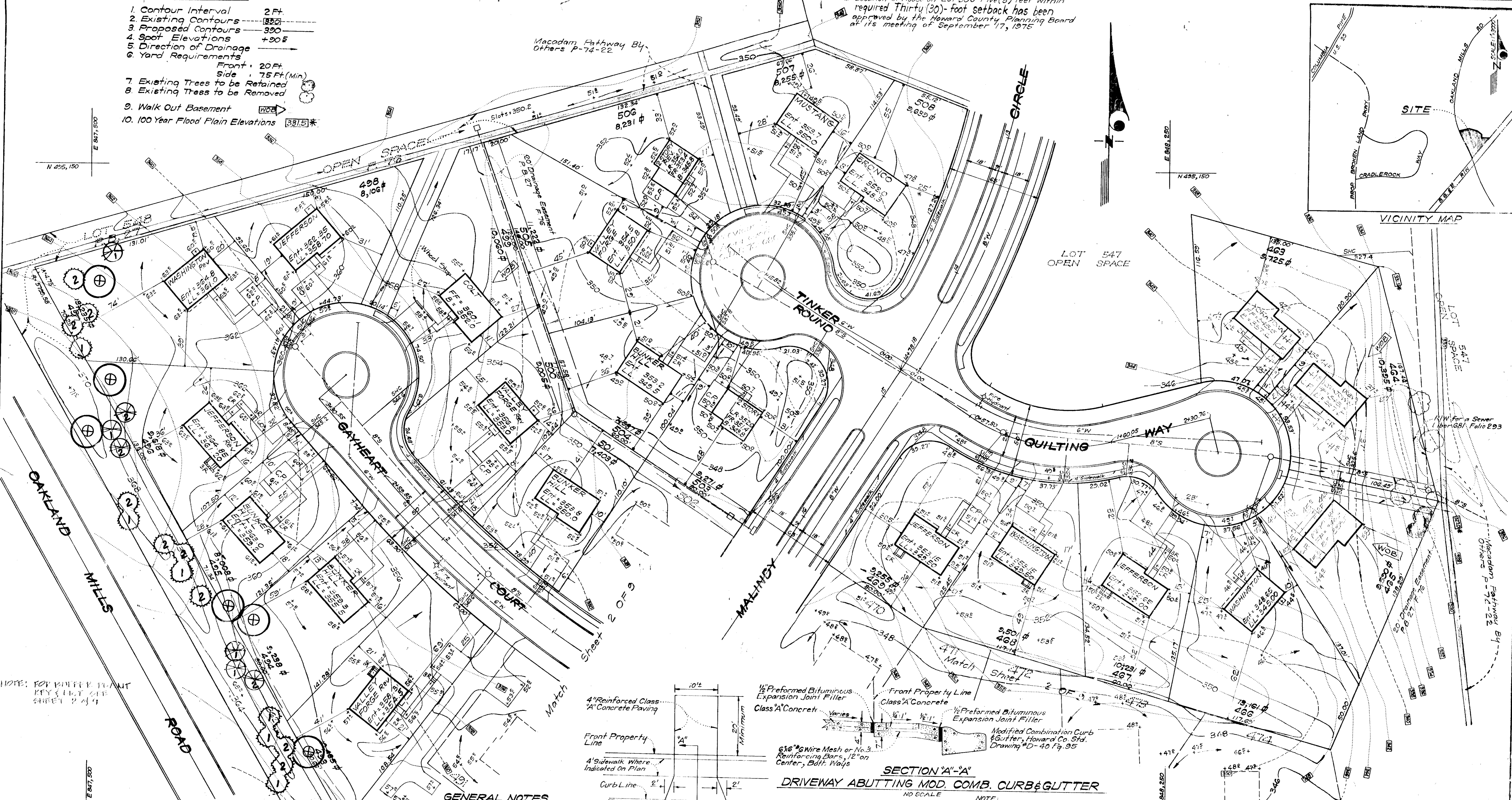
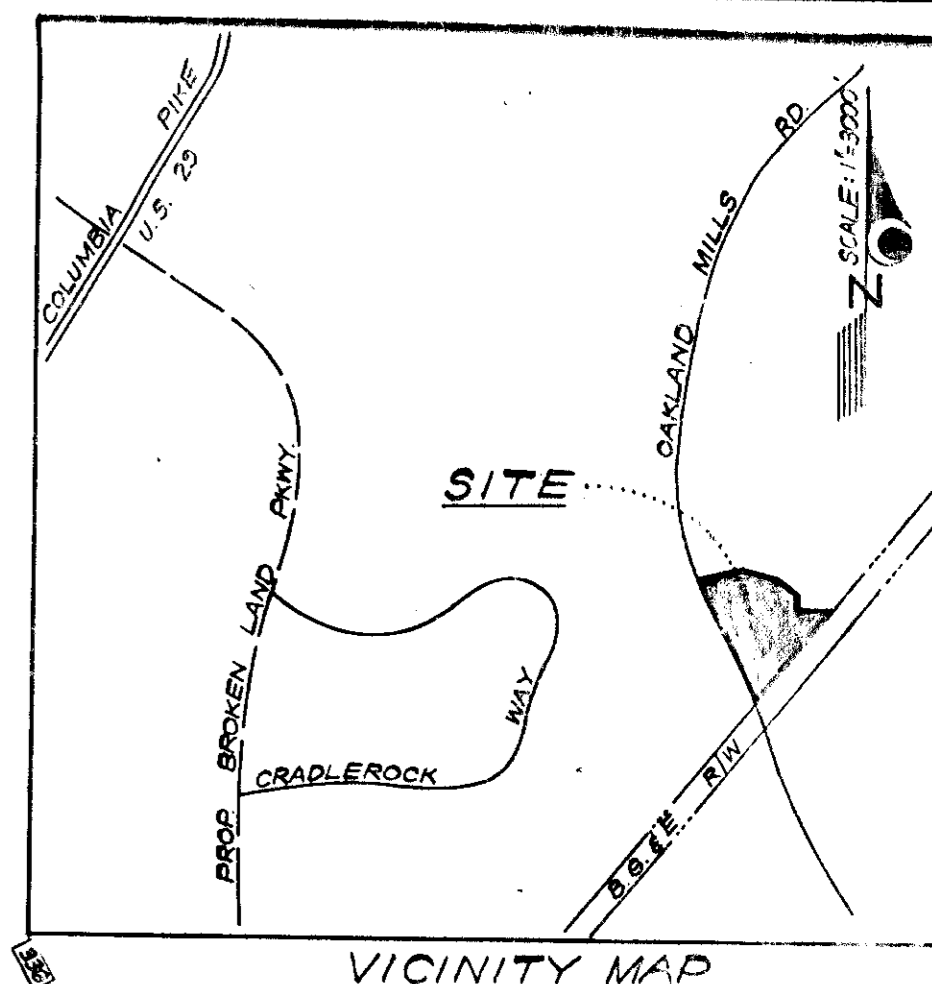


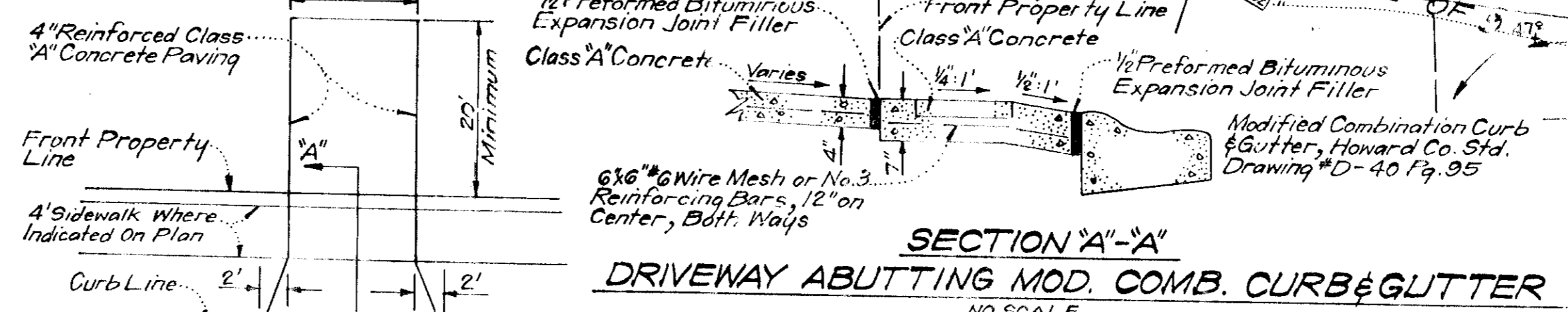
LEGEND

1. Contour Interval 2 Ft.
2. Existing Contours 390
3. Proposed Contours 390
4. Spot Elevations +90.5
5. Direction of Drainage
6. Yard Requirements
Front 20 Ft.
Side 75 Ft. (Min.)
7. Existing Trees to be Retained
8. Existing Trees to be Removed
9. Walk Out Basement
10. 100 Year Flood Plain Elevations 391.5

* Location of House on Lot 508 Five (5) feet within required Thirty (30)-foot setback has been approved by the Howard County Planning Board at its meeting of September 17, 1975



NOTE: FOR PUBLIC PLANT KEY & L.L. SEE SHEET 2 OF 9



GENERAL NOTES

1. The land included in this plan is zoned New Town (S.F.M.D.)
2. The Lots shown on this plan are covered by Final Development Plan Phase 146 recorded in Plat Book 28 Folios 42 to 56.
3. All coordinates are based on Maryland State Grid System. Elevations are based on the U.S. Coast and Geodetic Survey Mean Sea Level Datum of 1929.
4. The Area covered in this submission is located on Tax Map No. 36.
5. The total area included in this plan is 14.923 Acres.
6. All roadways shown are public and are existing.
7. Any damage to right of way or paving shall be corrected at Developer's expense.
8. Lots 503 thru 508 were previously submitted and approved under S.D.P. 76-08C.
9. For typical houses and house elevations, see sheet 3 OF 9.

PLAN
NO SCALE

NOTE: Use Residential Driveway Entrance, Howard Co. Drawing 10-34 Pg. 89, Except Where Driveway Abuts Modified Combination Curb & Gutter.

NOTE: All materials and construction shall be in accordance with Howard County Road Construction Code.

NOTE: For bearings and distances of individual lot lines, see record plat recorded in Plat Book 27 Folio 76.

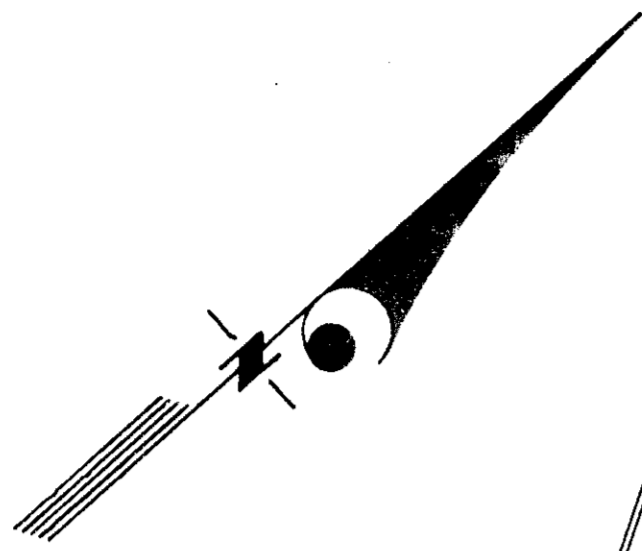
APPROVED FOR PUBLIC WATER AND PUBLIC SEWERAGE SYSTEMS, HOWARD COUNTY HEALTH DEPARTMENT
 COUNTY HEALTH OFFICER: [Signature] DATE: 3/11/76
 APPROVED BY HOWARD COUNTY OFFICE OF PLANNING & ZONING
 PLANNING DIRECTOR: [Signature] DATE: 3/12/76
 DIVISION OF LAND DEVELOPMENT & TRANSPORTATION PLANNING
 APPROVED FOR PUBLIC WATER AND PUBLIC SEWERAGE, STORM DRAINAGE SYSTEMS AND PUBLIC ROADS, HOWARD COUNTY DEPARTMENT OF PUBLIC WORKS
 DIRECTOR: [Signature] DATE: 3/11/76
 CHIEF BUREAU OF HIGHWAYS: [Signature] DATE: 3/12/76

APPROVED
 PLANNING BOARD OF HOWARD COUNTY
 DATE: 1-7-76
 [Signature]

CLARK • FINEFROCK & SACKETT
 ENGINEERS • PLANNERS • SURVEYORS
 11315 LOCKWOOD DRIVE SILVER SPRING, MARYLAND 20904 (301) 593-3410
 DESIGNED BY DBS
 DRAWN BY CCM
 CHECKED BY DBS
 DATE: Nov., 1975
SITE DEVELOPMENT PLAN
 LOTS 435-443, 446-502, 509-511, 556 & 557
COLUMBIA
 VILLAGE OF OWEN BROWN
 SECTION 4 AREA 1
 6TH ELECTION DISTRICT
 HOWARD COUNTY, MARYLAND
 FOR: RYLAND HOMES COLUMBIA DIVISION
 Suite 200 V.O.M. Bldg. Columbia, Maryland 21048
 SCALE: 1" = 30'
 DRAWINGS: 1 OF 3
 JOB NO.: 1176
 FILE NO.: 1176

LEGEND

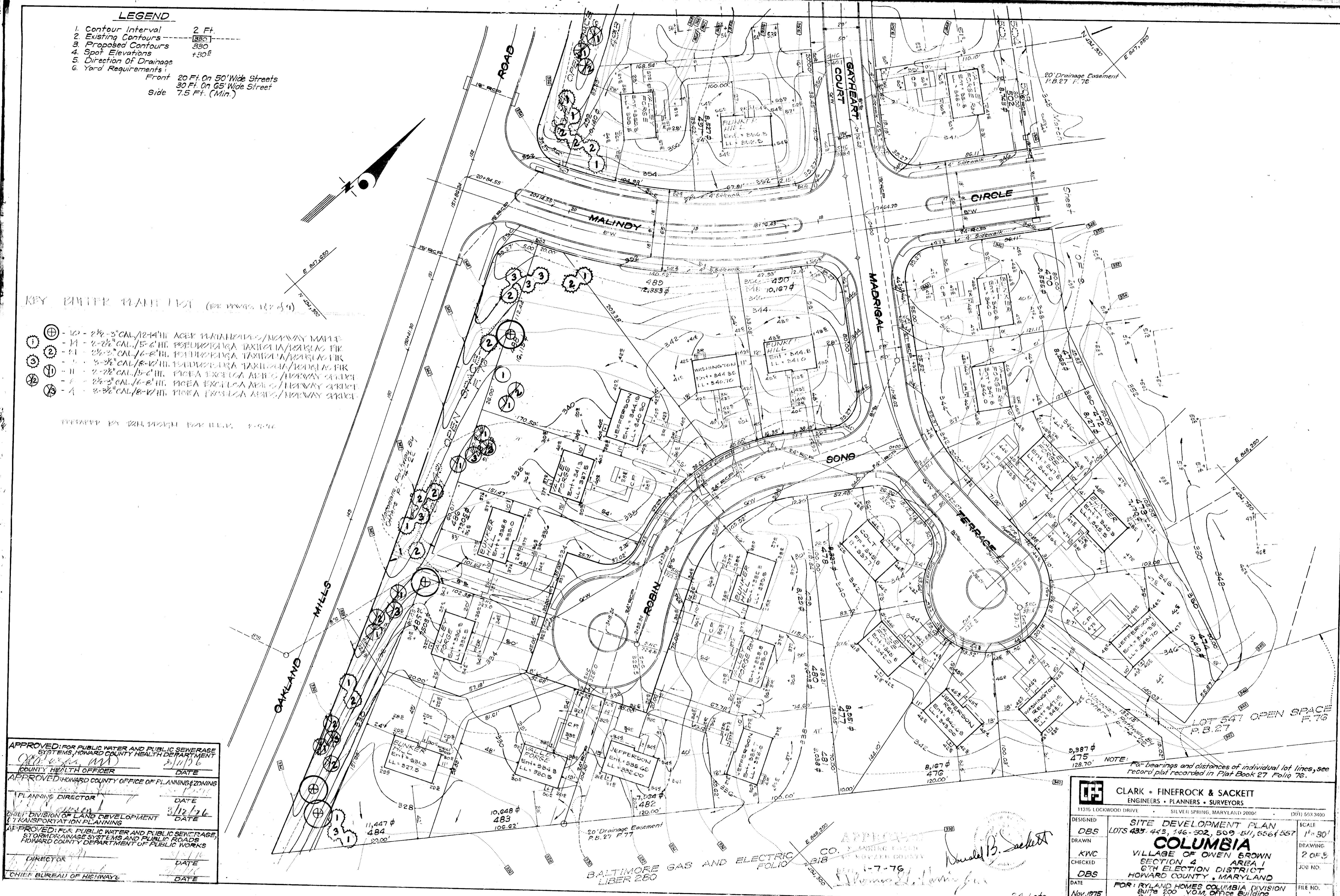
- 1. Contour Interval 2 Ft.
- 2. Existing Contours $\text{---}\text{---}\text{---}$
- 3. Proposed Contours $\text{---}\text{---}\text{---}$
- 4. Spot Elevations $\pm 30'$
- 5. Direction Of Drainage $\text{---}\text{---}\text{---}$
- 6. Yard Requirements:
 Front 20 Ft. On 50' Wide Streets
 Side 30 Ft. On 65' Wide Street
 Side 7.5 Ft. (Min.)



KEY (SEE PLAT BOOK 27, P. 76)

- ⊕ - 10' - 2 1/2" CAL./12-14" H. ASCE MANHOLE/STORMWAY MANHOLE
- ① - 2' - 2 1/2" CAL./15' H. POT-HOLE/UNDERPASS TAXICAB/STREET LIGHT
- ② - 2' - 2 1/2" CAL./16' H. POT-HOLE/UNDERPASS TAXICAB/STREET LIGHT
- ③ - 3' - 2 1/2" CAL./18' H. POT-HOLE/UNDERPASS TAXICAB/STREET LIGHT
- ④ - 2' - 2 1/2" CAL./15' H. POT-HOLE/UNDERPASS TAXICAB/STREET LIGHT
- ⑤ - 2' - 2 1/2" CAL./16' H. POT-HOLE/UNDERPASS TAXICAB/STREET LIGHT
- ⑥ - 2' - 2 1/2" CAL./18' H. POT-HOLE/UNDERPASS TAXICAB/STREET LIGHT

PREPARED BY ENGINEERING FOR ILLINOIS, INC.



APPROVED FOR PUBLIC WATER AND PUBLIC SEWERAGE SYSTEMS, HOWARD COUNTY HEALTH DEPARTMENT
 COUNTY HEALTH OFFICER DATE 3/11/76
 APPROVED FOR PLANNING AND ZONING, HOWARD COUNTY OFFICE OF PLANNING AND ZONING
 PLANNING DIRECTOR DATE 3/12/76
 DIVISION OF LAND DEVELOPMENT AND TRANSPORTATION PLANNING
 APPROVED FOR PUBLIC WATER AND PUBLIC SEWERAGE, STORM DRAINAGE SYSTEMS AND PUBLIC ROADS, HOWARD COUNTY DEPARTMENT OF PUBLIC WORKS
 DIRECTOR DATE
 CHIEF BUREAU OF HIGHWAYS DATE

CLARK • FINEPROCK & SACKETT
 ENGINEERS • PLANNERS • SURVEYORS
 11315 LOCKWOOD DRIVE SILVER SPRING, MARYLAND 20904 (301) 583-3400

DESIGNED DBS
 DRAWN DBS
 CHECKED KWC
 DATE Nov, 1975

SITE DEVELOPMENT PLAN
 LOTS 433, 443, 446-502, 509-511, 556 & 557
COLUMBIA
 VILLAGE OF OWEN BROWN
 SECTION 4 AREA 1
 6TH ELECTION DISTRICT
 HOWARD COUNTY, MARYLAND
 FOR: RYLAND HOMES COLUMBIA DIVISION
 SUITE 200 V.O.M. Office Building
 Columbia, Maryland 21045

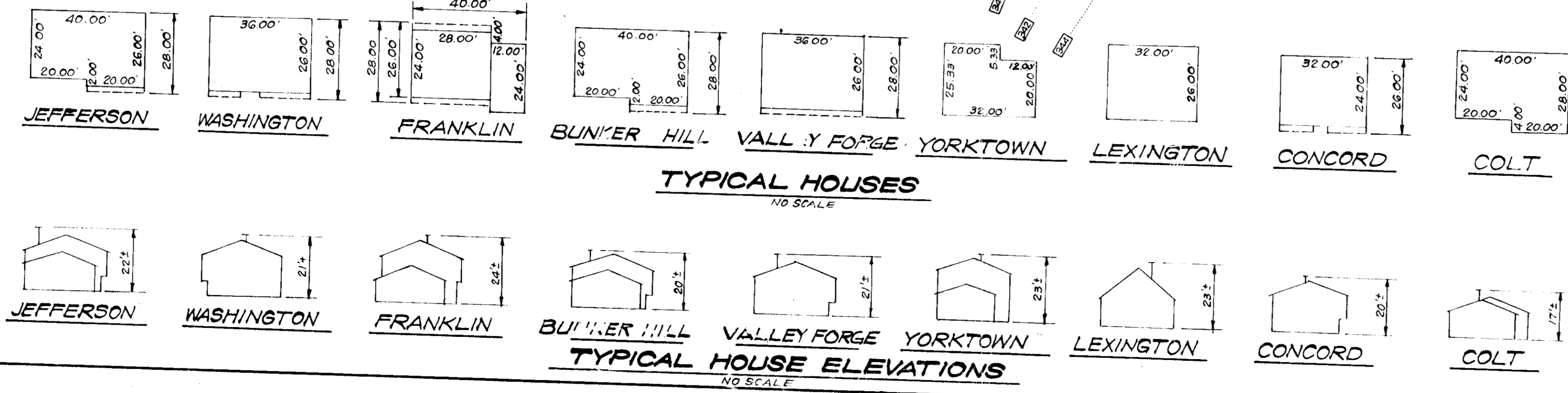
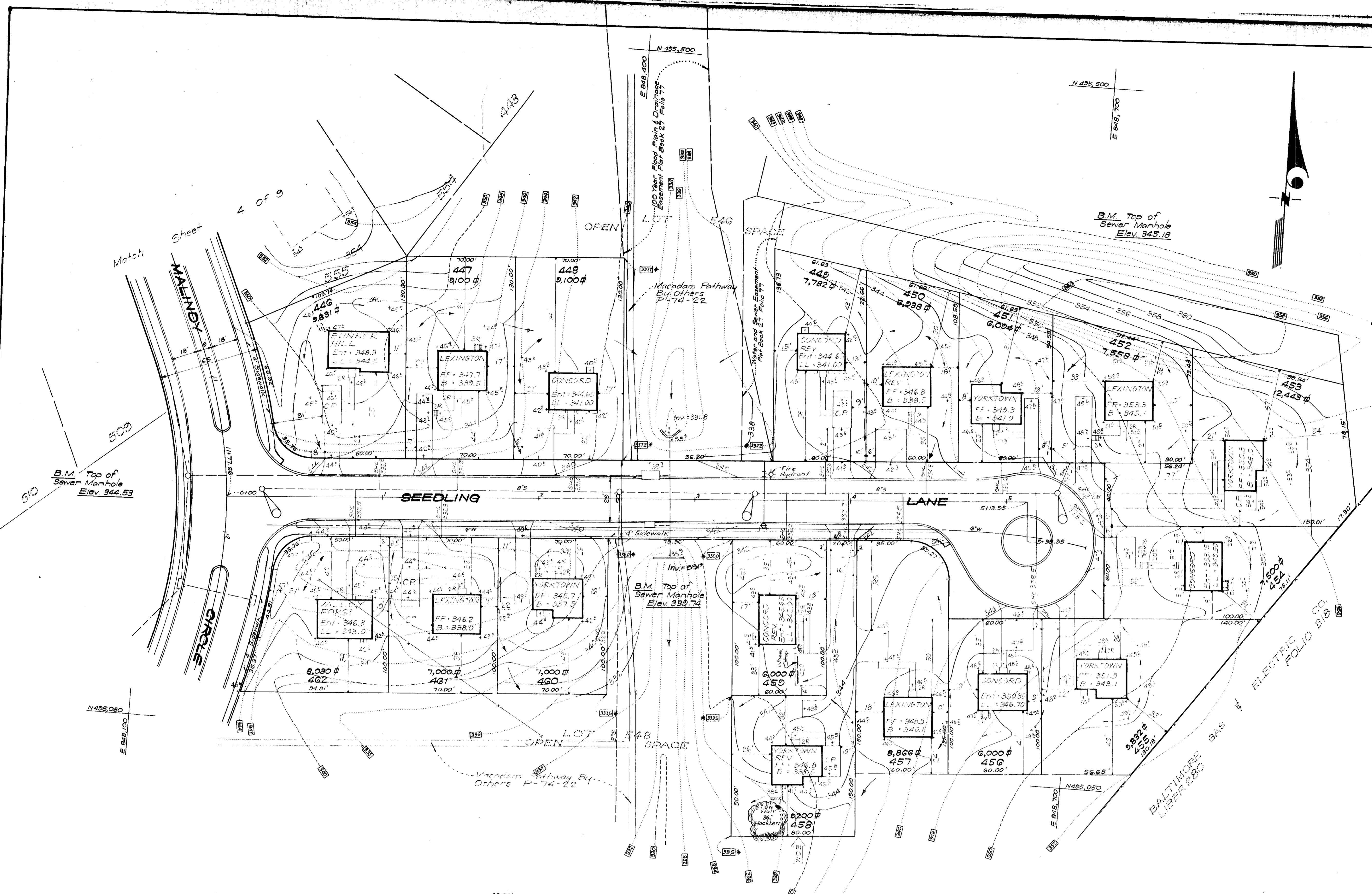
SCALE 1" = 30'
 DRAWING 2 OF 5
 JOB NO.
 FILE NO. 1776-X

NOTE: For bearings and distances of individual lot lines, see record plat recorded in Plat Book 27, Folio 76.

APPROVED: *Donald B. Sackett*
 1-7-76
 4 Lots

LEGEND

1. Contour Interval 2 Ft.
2. Existing Contours
3. Proposed Contours
4. Spot Elevations +30'
5. Direction Of Drainage
6. Yard Requirements:
Front: 20 Ft. On 50' Wide Street
30 Ft. On 60' Wide Street
Side: 7.5 Ft. (Min.)
7. Existing Trees to be Retained
8. Retaining Wall
9. Walk Out Basement
10. 100 Year Flood Plain Elevations



APPROVED FOR PUBLIC WATER AND PUBLIC SEWERAGE SYSTEMS, HOWARD COUNTY HEALTH DEPARTMENT
 COUNTY HEALTH OFFICER
 DATE 3/17/76
 APPROVED HOWARD COUNTY OFFICE OF PLANNING & ZONING
 PLANNING DIRECTOR
 DATE 3/17/76
 CHIEF DIVISION OF LAND DEVELOPMENT & TRANSPORTATION PLANNING
 APPROVED FOR PUBLIC WATER AND PUBLIC SEWERAGE, STORM DRAINAGE SYSTEMS AND PUBLIC ROADS, HOWARD COUNTY DEPARTMENT OF PUBLIC WORKS
 DIRECTOR
 DATE 3/17/76
 CHIEF BUREAU OF HIGHWAYS
 DATE

APPROVED
 PLANNING BOARD
 OF HOWARD COUNTY
 DATE 1-7-76

NOTE: For bearings and distances of individual lot lines, see record plat recorded in Plat Book 27 Folio 77.

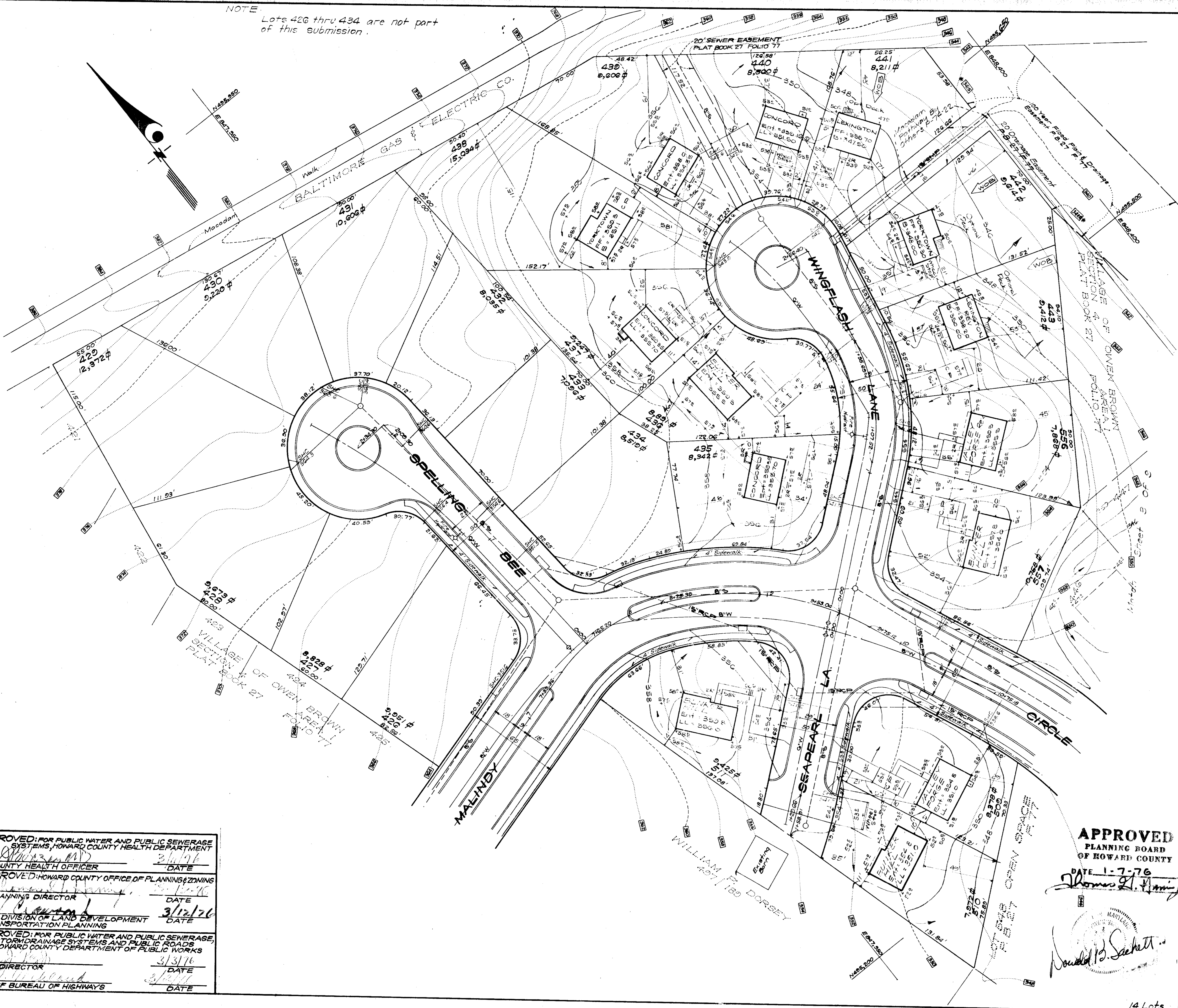
CLARK • FINEPROCK & SACKETT
 ENGINEERS • PLANNERS • SURVEYORS
 11315 LOCKWOOD DRIVE SILVER SPRING, MARYLAND 20904 (301) 593-3400

DESIGNED DBS	SITE DEVELOPMENT PLAN LOTS 435-443, 446-502, 509-511, 555, 557 COLUMBIA VILLAGE OF OWEN BROWN SECTION 4 AREA 1 6TH ELECTION DISTRICT HOWARD COUNTY, MARYLAND	SCALE 1"=30'
DRAWN KWC		DRAWING 30F9
CHECKED DBS		JOB NO.
DATE Nov, 1975		FILE NO. 1176-X
FOR: THE RYLAND GROUP, INC. (Columbia Div.) Suite 200 V.O.M. Office Building Columbia, Maryland 21043		

NOTE
Lots 426 thru 434 are not part
of this submission.

LEGEND

- 1. Contour Interval 2 Ft.
- 2. Existing Contours 300
- 3. Proposed Contours 300
- 4. Spot Elevations +00E
- 5. Direction Of Drainage
- 6. Retaining Wall
- 7. Yard Requirements:
Front - 20' On 50' Wide Streets
30' On 60' Wide Streets
Side - 75' (Min.)
- 8. Walk Out Basement
- 9. 100 Year Flood Plain Elevations



APPROVED FOR PUBLIC WATER AND PUBLIC SEWERAGE SYSTEMS, HOWARD COUNTY HEALTH DEPARTMENT
 COUNTY HEALTH OFFICER *[Signature]* DATE 3/12/76
 APPROVED HOWARD COUNTY OFFICE OF PLANNING & ZONING
 PLANNING DIRECTOR *[Signature]* DATE 3/12/76
 CHIEF DIVISION OF LAND DEVELOPMENT & TRANSPORTATION PLANNING
 APPROVED FOR PUBLIC WATER AND PUBLIC SEWERAGE, STORM DRAINAGE SYSTEMS AND PUBLIC ROADS, HOWARD COUNTY DEPARTMENT OF PUBLIC WORKS
 DIRECTOR *[Signature]* DATE 3/13/76
 CHIEF BUREAU OF HIGHWAYS *[Signature]* DATE 3/13/76

APPROVED
PLANNING BOARD
OF HOWARD COUNTY
DATE 1-7-76
[Signature]

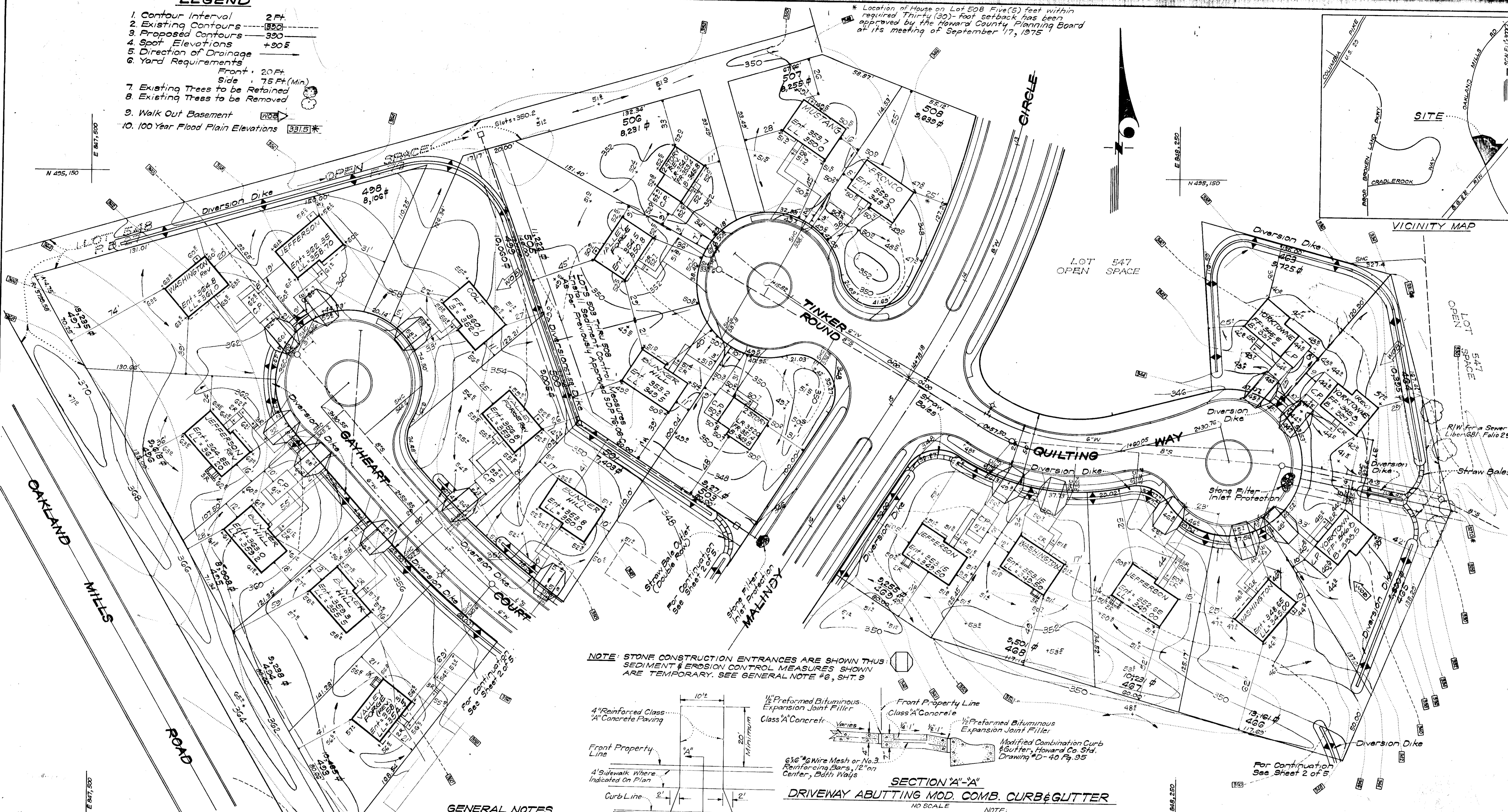
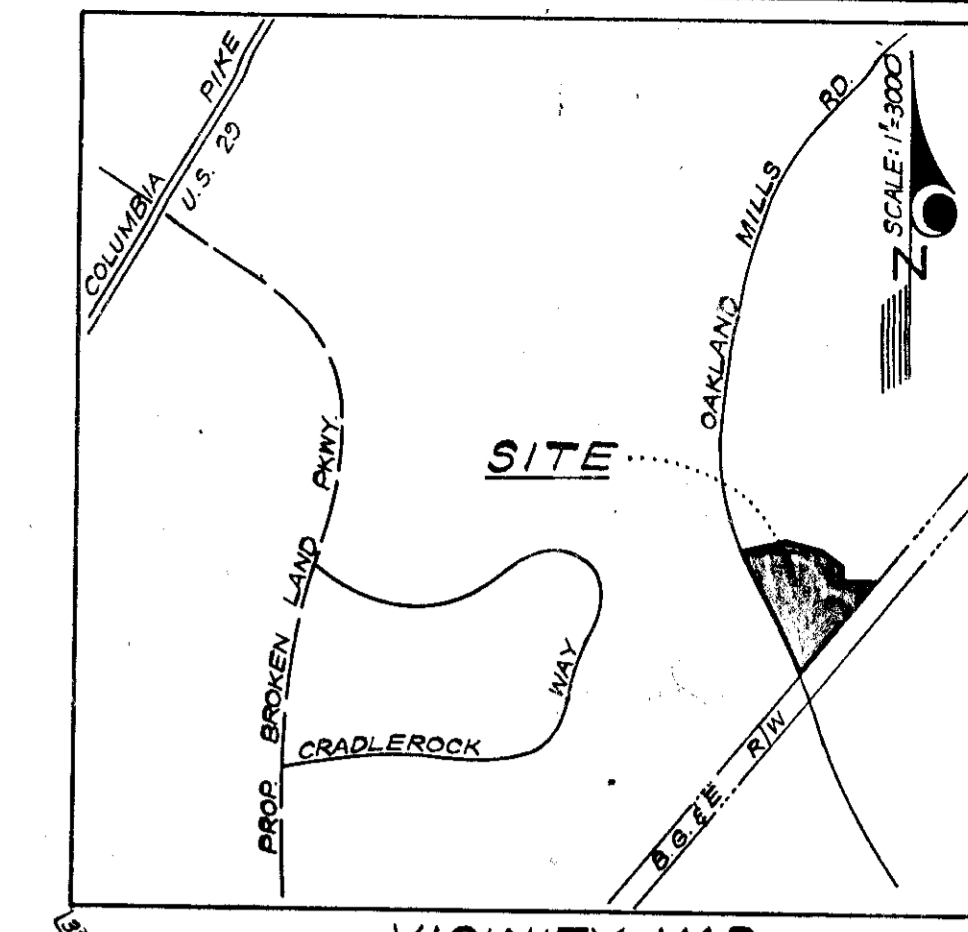
NOTE:
For bearings and distances of individual lot lines for Lots 435 thru 443 and 509 thru 511, see record plat recorded in Plat Book 27 Folio 77; For Lots 554 and 555, see Plat Book Folio

CLARK • FINROCK & SACKETT ENGINEERS • PLANNERS • SURVEYORS 11315 LOCKWOOD DRIVE SILVER SPRING, MARYLAND 20904 (301) 593-3400		
DESIGNED DBS	SITE DEVELOPMENT PLAN LOTS 435-443; 446-502; 509-511; 554 & 557	SCALE 1" = 30'
DRAWN KWC	COLUMBIA VILLAGE OF OWEN BROWN SECTION 4 6TH ELECTION DISTRICT HOWARD COUNTY, MARYLAND	DRAWING 4 OF 9
CHECKED DBS		JOB NO.
DATE Nov. 1975	FOR: THE RYLAND GROUP, INC. (Columbia Div.) Suite 200 V.O.M. Office Building Columbia, Maryland 21043	FILE NO. 1176-X

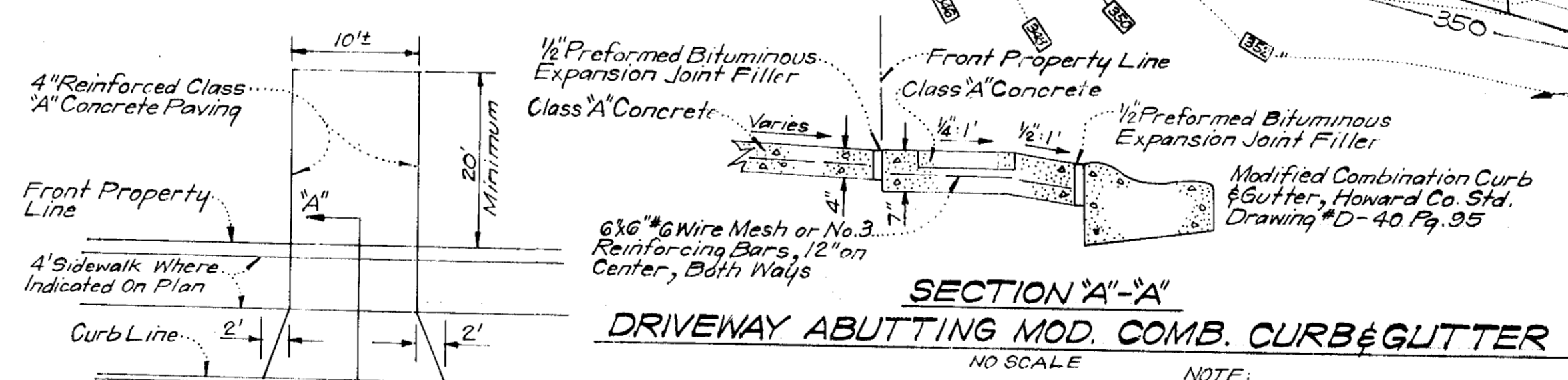
LEGEND

1. Contour Interval 2 Ft.
2. Existing Contours 350
3. Proposed Contours 350
4. Spot Elevations +30.5
5. Direction of Drainage
6. Yard Requirements
Front: 20 Ft.
Side: 7.5 Ft. (Min.)
7. Existing Trees to be Retained
8. Existing Trees to be Removed
9. Walk Out Basement
10. 100 Year Flood Plain Elevations 331.5

* Location of House on Lot 508 Five (5) feet within required Thirty (30)-foot setback has been approved by the Howard County Planning Board at its meeting of September 17, 1975



NOTE: STONE CONSTRUCTION ENTRANCES ARE SHOWN THUS: SEDIMENT & EROSION CONTROL MEASURES SHOWN ARE TEMPORARY. SEE GENERAL NOTE #6, SHT. 9



GENERAL NOTES

1. The land included in this plan is zoned New Town (S.F.M.D.)
2. The Lots shown on this plan are covered by Final Development Plan Phase 146 recorded in Plat Book 28 Folios 42 to 56.
3. All coordinates are based on Maryland State Grid System. Elevations are based on the U.S. Coast and Geodetic Survey Mean Sea Level Datum of 1929.
4. The Area covered in this submission is located on Tax Map No. 36
5. The total area included in this plan is 14,929 sq.
6. All roadways shown are public and are existing.
7. Any damage to right of way or paving shall be corrected at Developer's expense.
8. Lots 503 thru 508 were previously submitted and approved under S.D.P. 76-08C.

PLAN
NO SCALE

NOTE: Use Residential Driveway Entrance, Howard Co. Drawing #D-34 Pg. 83, Except Where Driveway Abuts Modified Combination Curb & Gutter.

NOTE: All materials and construction shall be in accordance with Howard County Road Construction Code.

APPROVED FOR PUBLIC WATER AND PUBLIC SEWERAGE SYSTEMS, HOWARD COUNTY HEALTH DEPARTMENT
 COUNTY HEALTH OFFICER: *[Signature]* DATE: 3/11/76
 PLANNING & ZONING: *[Signature]* DATE: 5-12-76
 DIRECTOR: *[Signature]* DATE: 3/12/76
 CHIEF BUREAU OF HIGHWAYS: *[Signature]* DATE: 3/17/76

HOWARD
 Eric V. Herman 2/26/76

Robert W. Spitzer 2/26/76
 APPROVED DATE

1/12/75 Jeffrey W. Carpenter
 DATE SIGNATURE

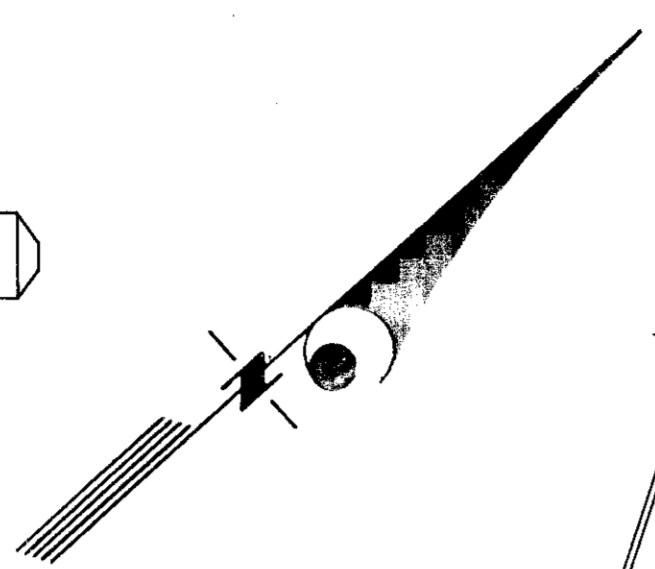
APPROVED
 PLANNING BOARD
 OF HOWARD COUNTY
 DATE: 1-7-76
[Signature]

CLARK • FINEFROCK & SACKETT
 ENGINEERS • PLANNERS • SURVEYORS
 11315 LOC KWOOD DRIVE SILVER SPRING, MARYLAND 20904 (301) 583-2424
 DESIGNED: CCM
 DRAWN: CCM
 CHECKED: DBS
 DATE: June, 1975
 SEDIMENT & EROSION CONTROL PLAN
 SCALE: 1" = 30'
 DRAWING: COLUMBIA
 VILLAGE OF OWEN BROWN
 SECTION 4 AREA 1
 6TH ELECTION DISTRICT
 HOWARD COUNTY, MARYLAND
 FOR: RYLAND HOMES COLUMBIA DIVISION
 Suite 200 V.O.M. Office Building
 Columbia, Maryland 21043
 FILE NO.: 1166 SE
 SDP-76-46C

LEGEND

1. Contour Interval 2 Ft.
2. Existing Contours 330
3. Proposed Contours 330
4. Spot Elevations 1.30±
5. Direction Of Drainage
6. Yard Requirements:
 Front 20 Ft. On 50' Wide Streets
 30 Ft. On 65' Wide Street
 Side 7.5 Ft. (Min.)

NOTE: STONE CONSTRUCTION ENTRANCES ARE SHOWN THUS: SEDIMENT & EROSION CONTROL MEASURES SHOWN ARE TEMPORARY. SEE GENERAL NOTE #6, SHT. 9



HOWARD

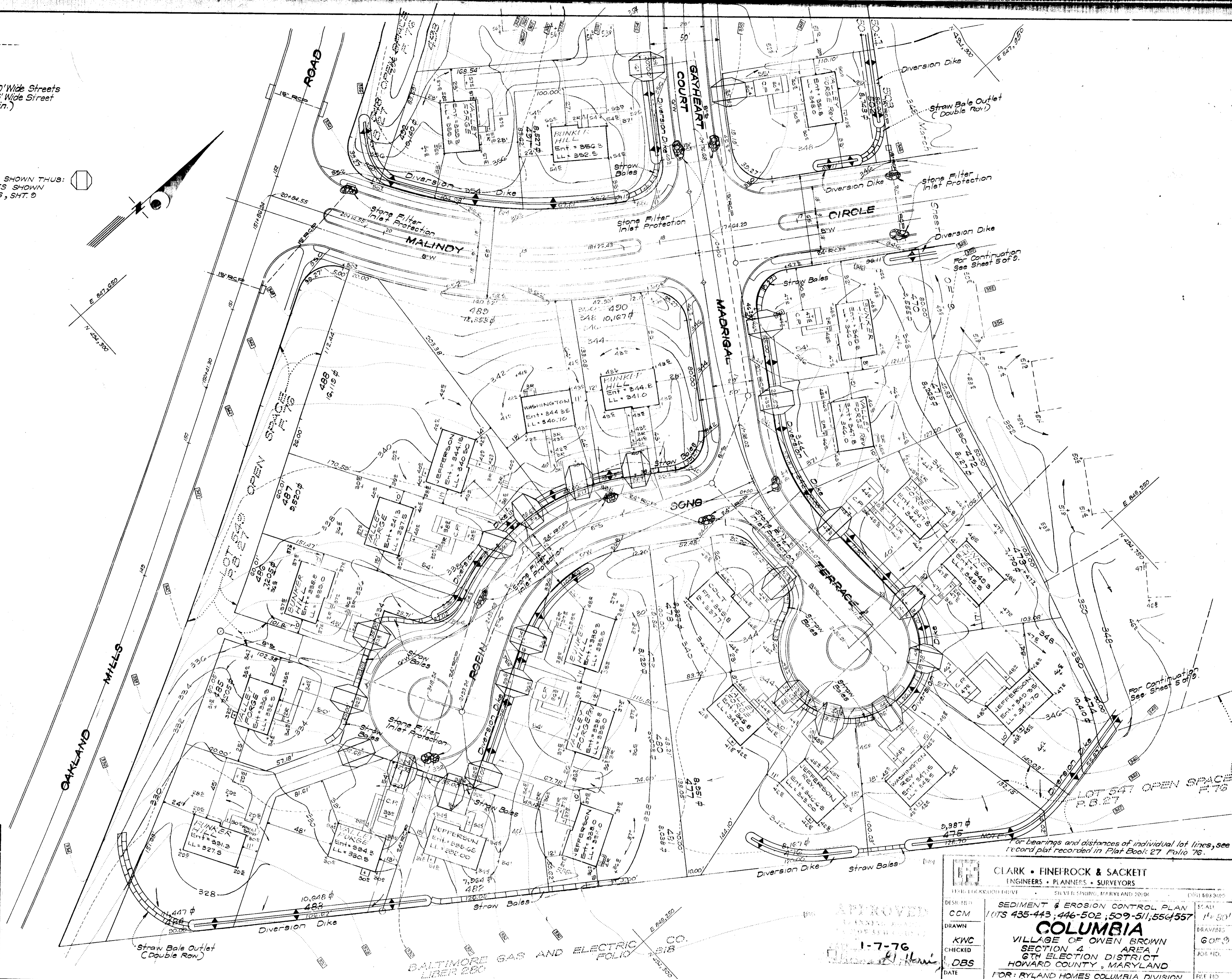
Eric V. Herman 2/26/76

Robert J. Zichner 2/26/76
 APPROVED DATE

11/21/75 Jeffrey D. Carpenter
 DATE SIGNATURE

11-21-75 G. Nelson Clark
 DATE SIGNATURE

APPROVED FOR PUBLIC WATER AND PUBLIC SEWERAGE SYSTEMS, HOWARD COUNTY HEALTH DEPARTMENT
 COUNTY HEALTH OFFICER
 APPROVED FOR HOWARD COUNTY OFFICE OF PLANNING & ZONING
 PLANNING DIRECTOR
 OFFICE OF LAND DEVELOPMENT
 PLANNING
 APPROVED FOR PUBLIC WATER AND PUBLIC SEWERAGE SYSTEMS, HOWARD COUNTY OFFICE OF PUBLIC WORKS
 CHIEF ENGINEER OF HIGHWAY

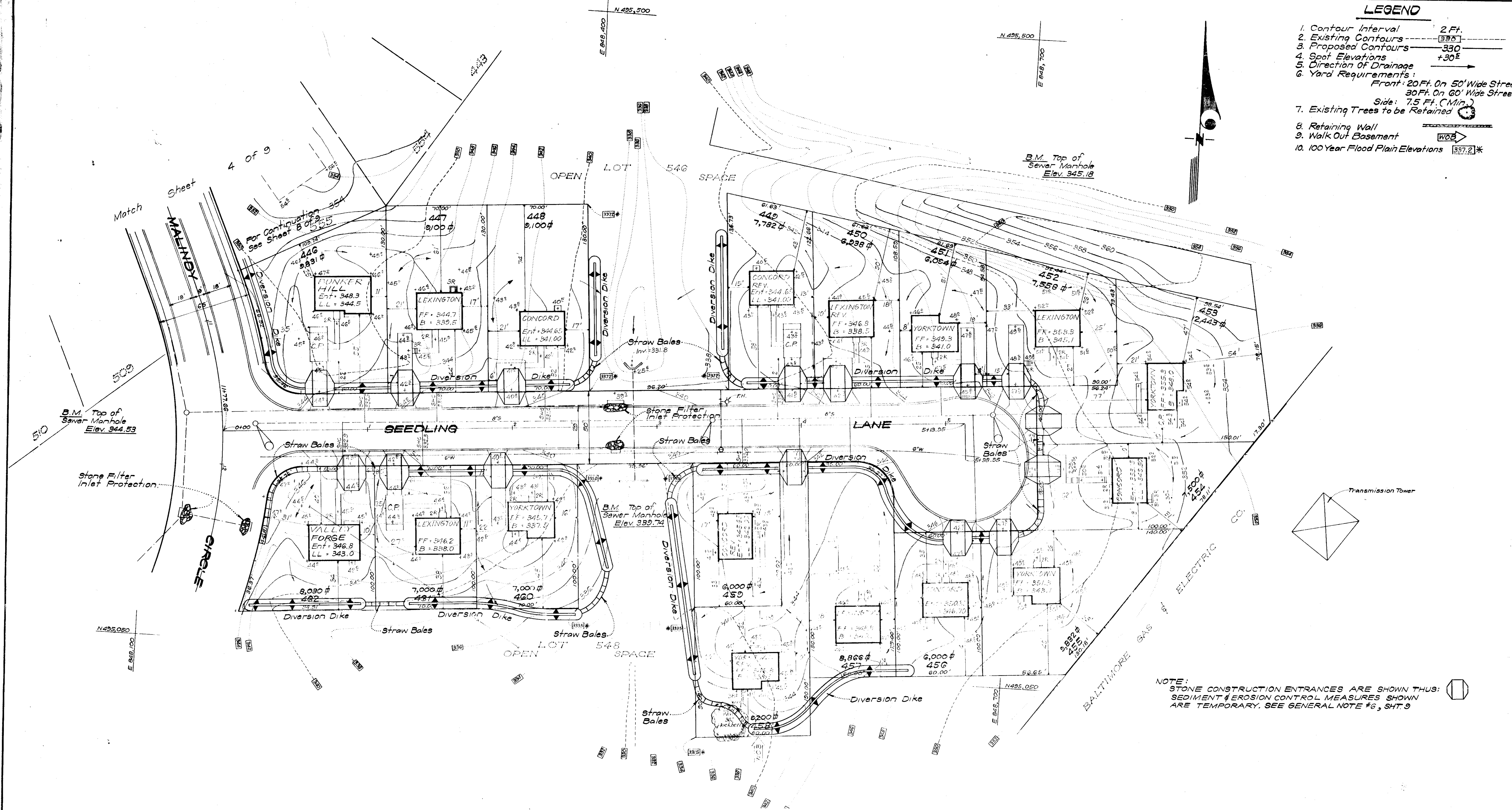


For bearings and distances of individual lot lines, see record plat recorded in Plat Book 27, Folio 76.

CLARK • FINEROCK & SACKETT ENGINEERS • PLANNERS • SURVEYORS 13411 LICKWOOD DRIVE SILVER SPRING, MARYLAND 20904 (301) 888-3400	
DESIGNED BY CCM	SEDIMENT & EROSION CONTROL PLAN LOTS 435-443, 446-502, 509-511, 554-557 SCALE: 1" = 30' DRAWN BY KWC CHECKED BY OBS DATE Nov, 1975
COLUMBIA VILLAGE OF OWEN BROWN SECTION 4 AREA 1 6TH ELECTION DISTRICT HOWARD COUNTY, MARYLAND FOR: RYLAND HOMES COLUMBIA DIVISION Suite 200 V.O.M. Office Building Columbia, Maryland 21043 FILE NO. 1166 SE	

LEGEND

1. Contour Interval 2 Ft.
2. Existing Contours 330
3. Proposed Contours 330
4. Spot Elevations +30'
5. Direction Of Drainage
6. Yard Requirements:
Front: 20 Ft. On 50' Wide Street
30 Ft. On 60' Wide Street
Side: 7.5 Ft. (Min.)
7. Existing Trees to be Retained
8. Retaining Wall
9. Walk Out Basement
10. 100 Year Flood Plain Elevations 337.2'



NOTE: STONE CONSTRUCTION ENTRANCES ARE SHOWN THUS:
 SEDIMENT & EROSION CONTROL MEASURES SHOWN ARE TEMPORARY. SEE GENERAL NOTE #6, SHT. 9

NOTE: For bearings and distances of individual lot lines, see record plat recorded in Plat Book 27 Folio 77.

APPROVED FOR PUBLIC WATER AND PUBLIC SEWERAGE SYSTEMS, HOWARD COUNTY HEALTH DEPARTMENT
 COUNTY HEALTH OFFICER: *[Signature]* 8/11/76
 APPROVED HOWARD COUNTY OFFICE OF PLANNING AND ZONING
 PLANNING DIRECTOR: *[Signature]* 3/12/76
 APPROVED FOR DEVELOPMENT AND ZONING
 DEVELOPMENT DIRECTOR: *[Signature]* 3/13/76
 CHIEF BUREAU OF HIGHWAYS: *[Signature]* 3/14/76

HOWARD
 Eric V. Herman 2/26/76
 APPROVED
[Signature] 2/26/76

11/21/75 Jeffrey L. Carpenter
 DATE SIGNATURE

11-21-75 G. Nelson Clark
 DATE SIGNATURE

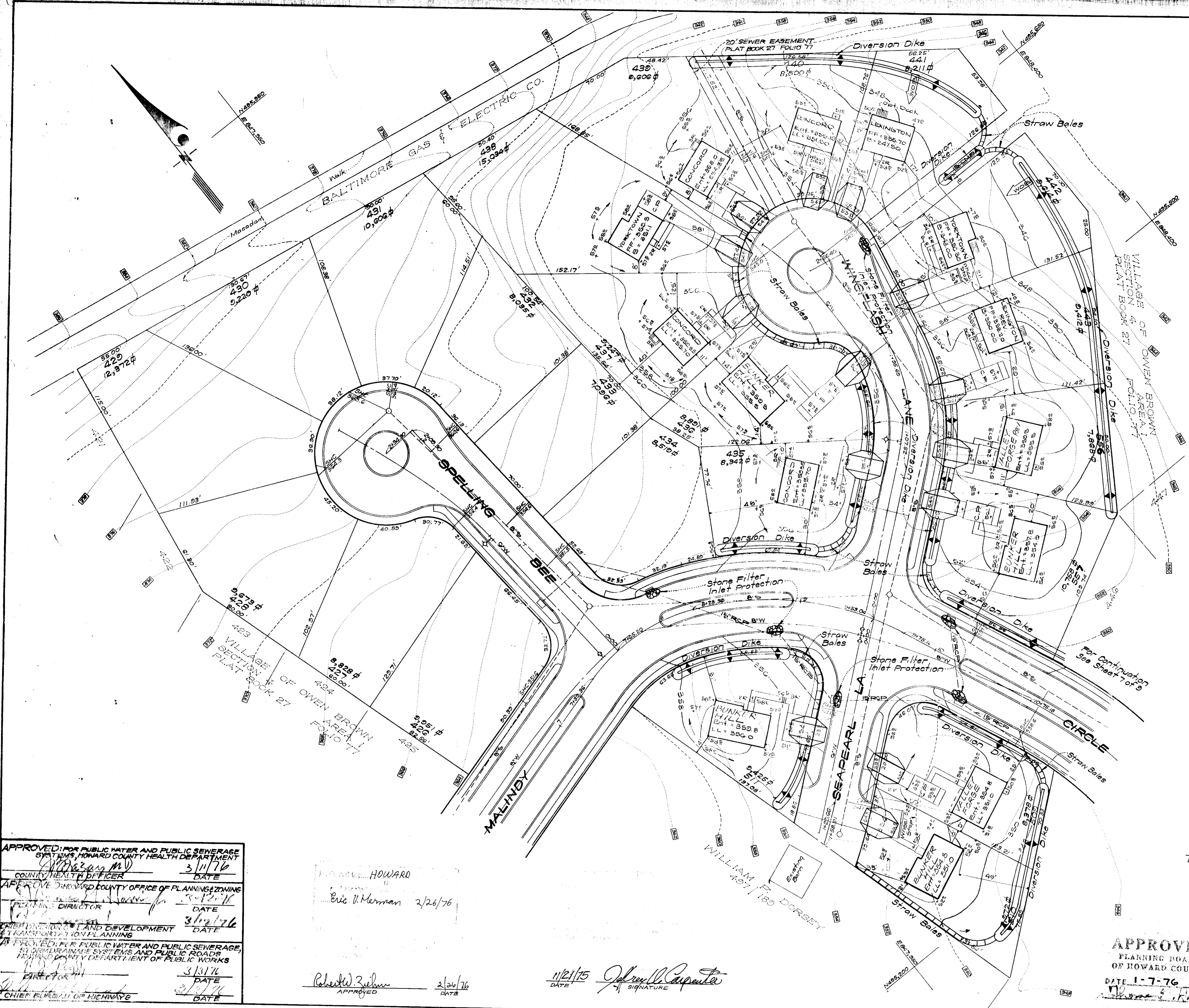
APPROVED
 PLANNING BOARD
 OF HOWARD COUNTY
 DATE 1-7-76

CLARK • FINEROCK & SACKETT ENGINEERS • PLANNERS • SURVEYORS 113 B. LOCKWOOD DRIVE SILVER SPRING, MARYLAND 20904 (301) 593-3401		
DESIGNED	CCM	SCALE
DRAWN	KWC	1" = 30'
CHECKED	DBS	7 OF 9
DATE	Nov, 1975	JOB NO.
SEDIMENT & EROSION CONTROL PLAN LOTS 443-443, 446-502; 509-511; 556 & 557 COLUMBIA VILLAGE OF OWEN BROWN SECTION 4 AREA 1 6TH ELECTION DISTRICT HOWARD COUNTY, MARYLAND		FILE NO.
FOR: THE RYLAND GROUP, INC. (Columbia Div.) Suite 200 V.O.M. Office Building Columbia, Maryland 21043		1166 SE

LEGEND

- 1. Contour Interval 2 Ft.
- 2. Existing Contours 2.00
- 3. Proposed Contours 2.00
- 4. Spot Elevations +00.0
- 5. Direction of Drainage
- 6. Retaining Wall
- 7. Yard Requirements:
Front - 20' On 50' Wide Streets
Side - 7.5' (Min.)
- 8. Walk Out Basement

NOTE:
STONE CONSTRUCTION ENTRANCES ARE SHOWN THUS:
SEDIMENT & EROSION CONTROL MEASURES SHOWN ARE TEMPORARY. SEE GENERAL NOTE #6, SHT. 9



APPROVED FOR PUBLIC WATER AND PUBLIC SEWERAGE SYSTEMS, HOWARD COUNTY HEALTH DEPARTMENT
 COUNTY HEALTH OFFICER: Eric U. Merman DATE: 3/11/76
APPROVED HOWARD COUNTY OFFICE OF PLANNING & ZONING
 PLANNING DIRECTOR: Eric U. Merman DATE: 3/18/76
APPROVED FOR LAND DEVELOPMENT & TRANSPORTATION PLANNING
 PLANNING DIRECTOR: Eric U. Merman DATE: 3/18/76
APPROVED FOR PUBLIC WATER AND PUBLIC SEWERAGE, STORM DRAINAGE SYSTEMS AND PUBLIC ROADS, HOWARD COUNTY DEPARTMENT OF PUBLIC WORKS
 DIRECTOR: Eric U. Merman DATE: 3/17/76
 CHIEF ENGINEER OF HIGHWAYS: Eric U. Merman DATE: 3/17/76

HOWARD
 Eric U. Merman 2/26/76

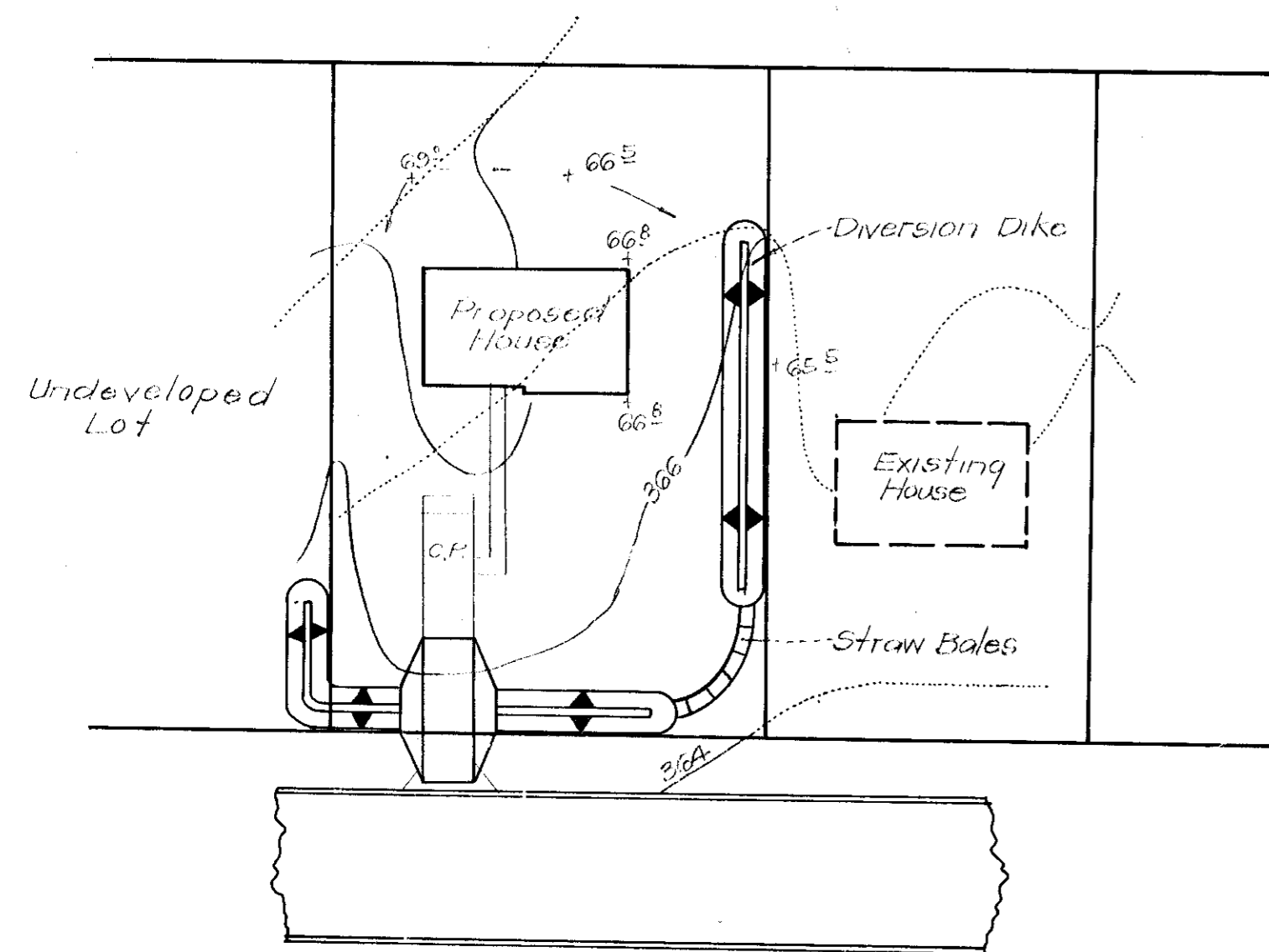
Robert W. Zuhm 2/26/76
 APPROVED DATE

1/21/75 Jeffrey V. Carpenter
 DATE SIGNATURE

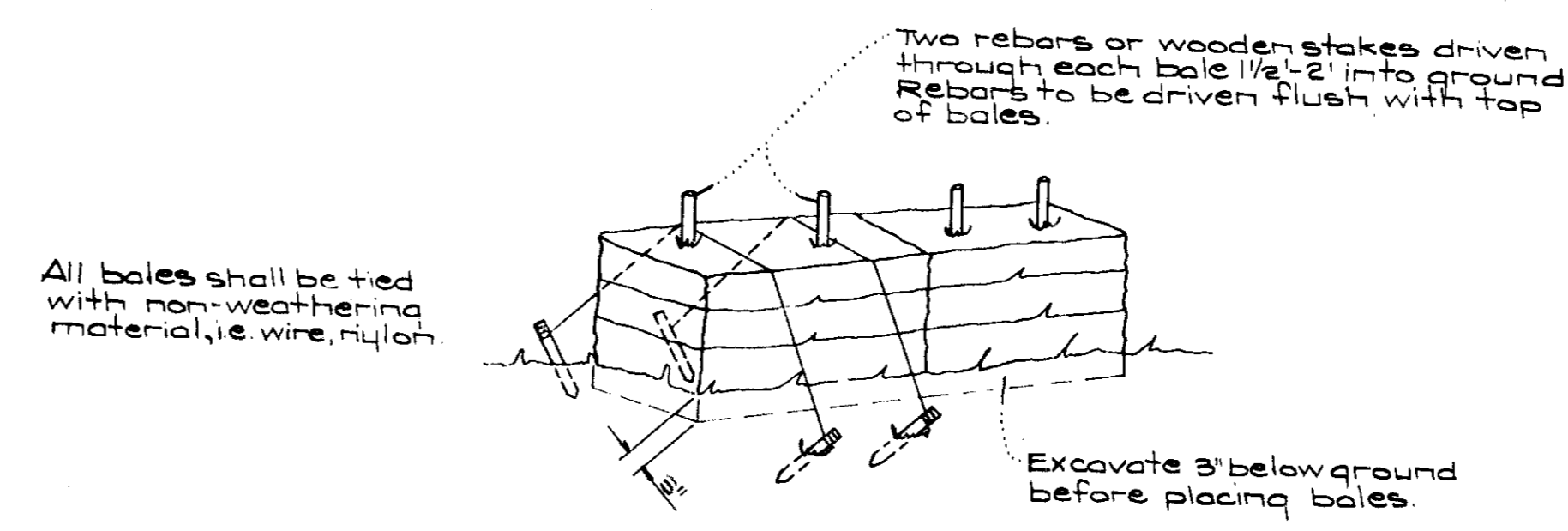
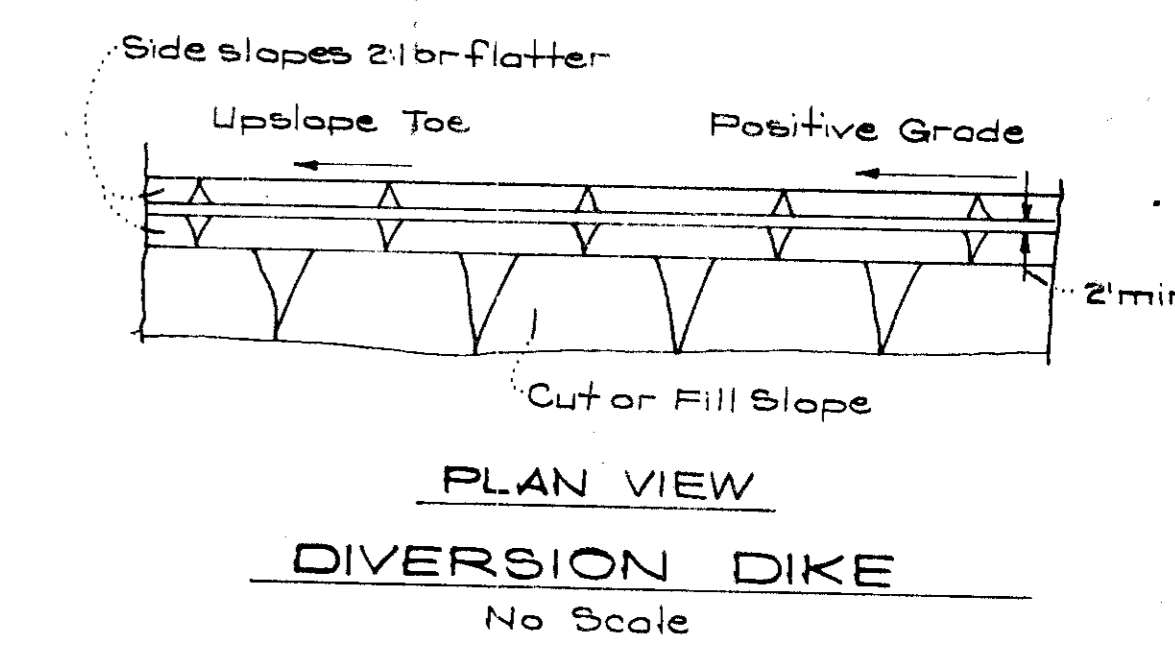
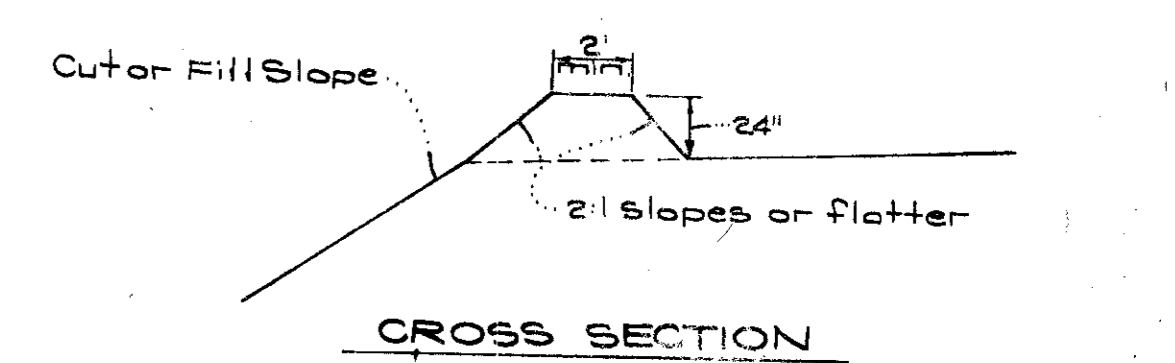
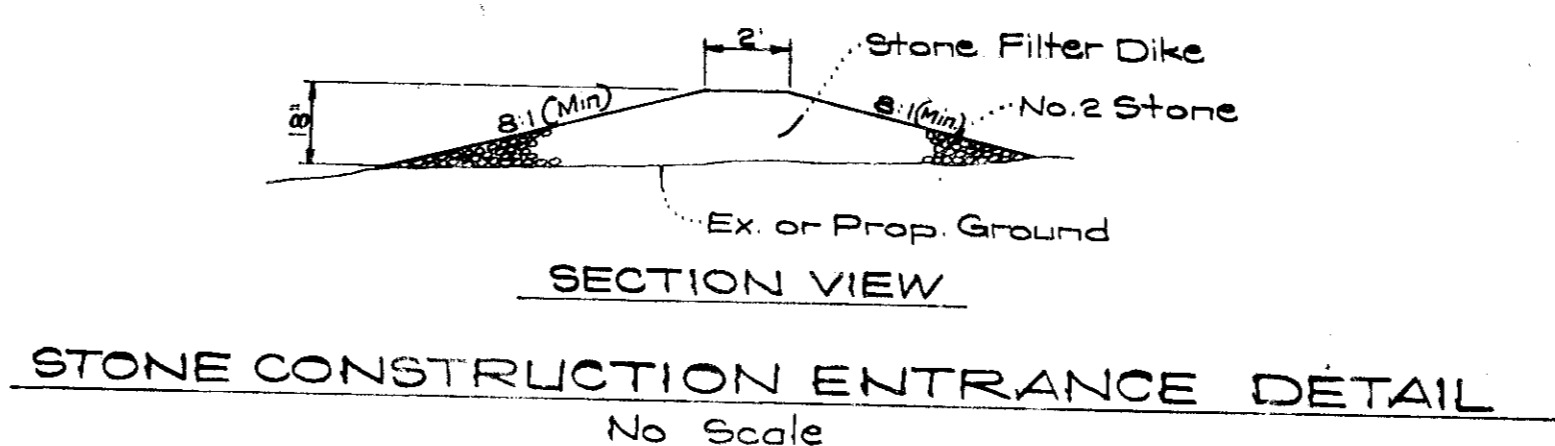
1/21/75 G. Nelson Clark
 DATE SIGNATURE

CLARK • FINEROCK & SACKETT ENGINEERS • PLANNERS • SURVEYORS		13011 503 3400
DESIGNED	SEDIMENT & EROSION CONTROL PLAN	SCALE 1" = 30'
CHECKED	LOTS 435-443, 446-502, 509-511, 556/557	DRAWING 8 of 9
DRAWN	COLUMBIA	JOB NO.
CHECKED	VILLAGE OF OWEN BROWN	FILE NO.
SNC	SECTION 4 AREA 1	1166 SE
DATE	6TH ELECTION DISTRICT	
Nov. 1975	HOWARD COUNTY, MARYLAND	
	FOR: THE RYLAND GROUP, INC. (Columbia Div.)	
	Suite 200 V.O.M. Office Building	
	Columbia, Maryland 21043	

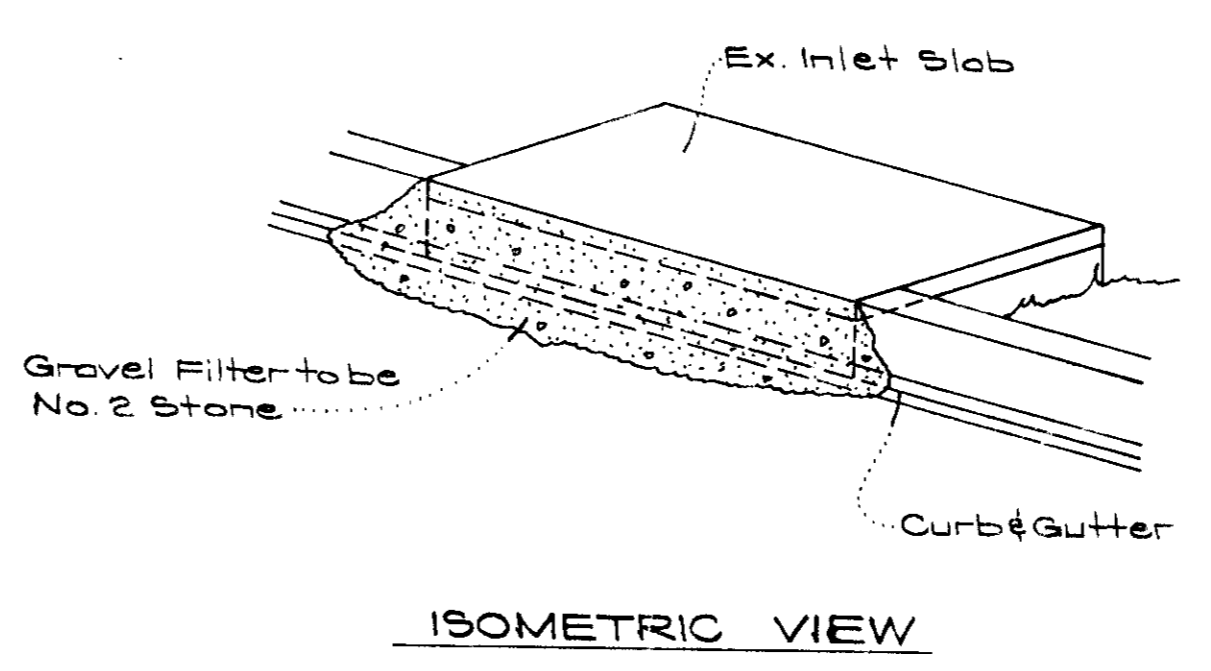
APPROVED
 PLANNING BOARD
 OF HOWARD COUNTY
 DATE: 1-7-76



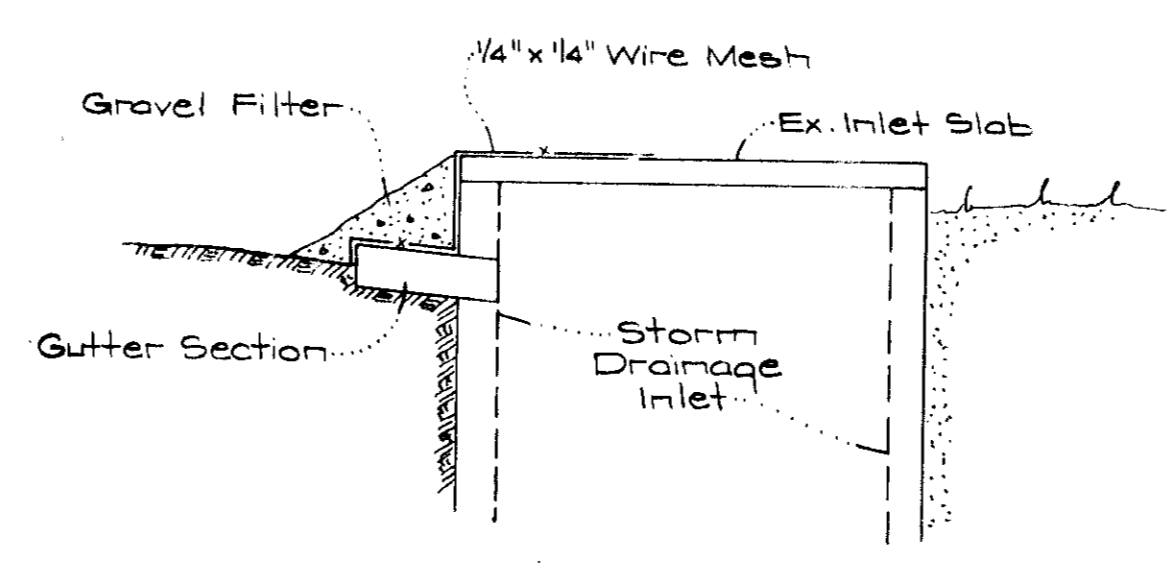
TYPICAL SINGLE LOT SEDIMENT CONTROL PLAN



TYPICAL STRAW BALE DETAIL
No Scale



ISOMETRIC VIEW



SECTION VIEW
STONE FILTER INLET PROTECTION DETAIL
No Scale

GENERAL NOTES

- All Sediment and Erosion Control Measures will be installed and stabilized according to this plan prior to any other grading, clearing, or disturbance of the existing surface of the site. See Note #5 for stabilization except that the seed mixture will be Kentucky 31 applied at the rate of 14 lbs/1000 ft.
- Notify the Howard Soil Conservation District and the Bureau of Inspections and Permits at least 24 hours before starting any work.
- All sediment control practices to conform to the standards and Specifications For Soil Erosion and Sediment Control in Urbanizing Areas and shall be adjusted to meet actual field conditions.
- Stabilization of disturbed ground to be done as soon after construction as possible.
- All graded areas shall be treated in accordance with the following specifications:
 - Seed certified 85% germination applied at the rate of 2 lbs/1000 ft mixture - 40% Kentucky Blue, 20% Chewink Fescue, 20% Kentucky 31, and 20% Annual Ryegrass.
 - Fertilizer - 5-10-10 applied at the rate of 23 lbs/1000 ft. Ground agricultural lime or dolomitic lime applied at the rate of 40 lbs/1000 ft.
 - Mulch - Weed free grain straw applied at the rate of 70 lbs/1000 ft. Mulch shall be secured to the ground by any approved method i.e. asphalt tacks, chemical binder, wood chips, etc.
- All structural sediment control measures are to remain in place until permission for their removal has been obtained from the Howard Soil Conservation District, phone 465-3180 or 465-5000, ext. 528.
- On site inspection and maintenance of all sediment control measures including clearing of sediment traps and dikes, and proper establishment of all planned vegetative measures will be the responsibility of the Developer or his representative on the site, on a continuing day to day basis.
- Protection of stabilized area from sediment runoff shall be provided by the use of an approved sediment control device, i.e. straw bales, diversion dikes.
- Site Analysis:

Total Area:	14.9 Ac.
Area To Be Roofed:	1.7 Ac.
Area To Be Paved:	.8 Ac.
Area To Be Seeded:	11.5 Ac.
Area Undisturbed:	.9 Ac.
- The Contractor shall keep all public roads free of sediment deposits, left from heavy truck traffic leaving construction site.
- Stone filter dikes shall be constructed at all construction entrances.

CONSTRUCTION SEQUENCE

- Lots are to be constructed on an "As Sold" basis.
 - Utilizing single lot sediment control plan as shown on this sheet.
 - On a "Bulk Parcel" basis as shown on sheets 5, 6, 7, 8.
- It will be the Developer's responsibility to provide additional Sediment & Erosion Control Devices to protect previously constructed lots while proceeding with new construction for either (1) or (2) above.
- Install Sediment & Erosion Control measures as shown on sheets 5, 6, 7, 8 or 9 of 9.
 - Excavate for building footings and rough grade.
 - Construct buildings, carports, driveways and sidewalks.
 - Final grade and stabilize in accordance with General Note #5.

NOTE: Total Amount of Straw Bales shown = 1450 Ft.

APPROVED: FOR PUBLIC WATER AND PUBLIC SEWERAGE SYSTEMS, HOWARD COUNTY HEALTH DEPARTMENT
 COUNTY HEALTH OFFICER: *[Signature]* DATE: 3/11/76

APPROVED: HOWARD COUNTY OFFICE OF PLANNING & ZONING
 PLANNING DIRECTOR: *[Signature]* DATE: 3-12-76

CHIEF DIVISION OF LAND DEVELOPMENT & TRANSPORTATION PLANNING
 DATE: 3/12/76

APPROVED: FOR PUBLIC WATER AND PUBLIC SEWERAGE, STORM DRAINAGE SYSTEMS, AND PUBLIC ROADS
 HOWARD COUNTY DEPARTMENT OF PUBLIC WORKS
 DIRECTOR: *[Signature]* DATE: 3/13/76

CHIEF, BUREAU OF HIGHWAYS
 DATE: 3/21/76

Reviewed for HOWARD Name: S.C.D.
 and meets Technical Requirements
 Eric W. Harman Signature Date: 2/26/76
 U.S. Soil Conservation Service

THIS DEVELOPMENT PLAN IS APPROVED FOR SOIL EROSION AND SEDIMENT CONTROL BY THE HOWARD SOIL CONSERVATION DISTRICT.

APPROVED: *[Signature]* DATE: 2/26/76

11/21/75 *[Signature]*
 Date Signature

11-25-75 *[Signature]*
 Date G. Nelson Clark

APPROVED
 PLANNING BOARD
 OF HOWARD COUNTY
 DATE: 1-7-76
[Signature]

CLARK • FINEFROCK & SACKETT ENGINEERS • PLANNERS • SURVEYORS		11315 LOCKWOOD DRIVE SILVER SPRING, MARYLAND 20904 (301) 593-3400
DESIGN D	SEDIMENT & EROSION CONTROL PLAN LOTS 435-443, 446-502, 509-511, 556 & 657	SCALE: As Shown
DRAWN	COLUMBIA VILLAGE OF OWEN BROWN SECTION 4 AREA 1 6TH ELECTION DISTRICT HOWARD COUNTY, MARYLAND	DRAWING: 9 of 9
CHECKED	G.N.C.	JOB NO.
DATE	FOR: RYLAND HOMES COLUMBIA DIVISION SUITE 200 V.O.M. OFFICE BUILDING Columbia, Maryland 21043	FILE NO. 1166 SE