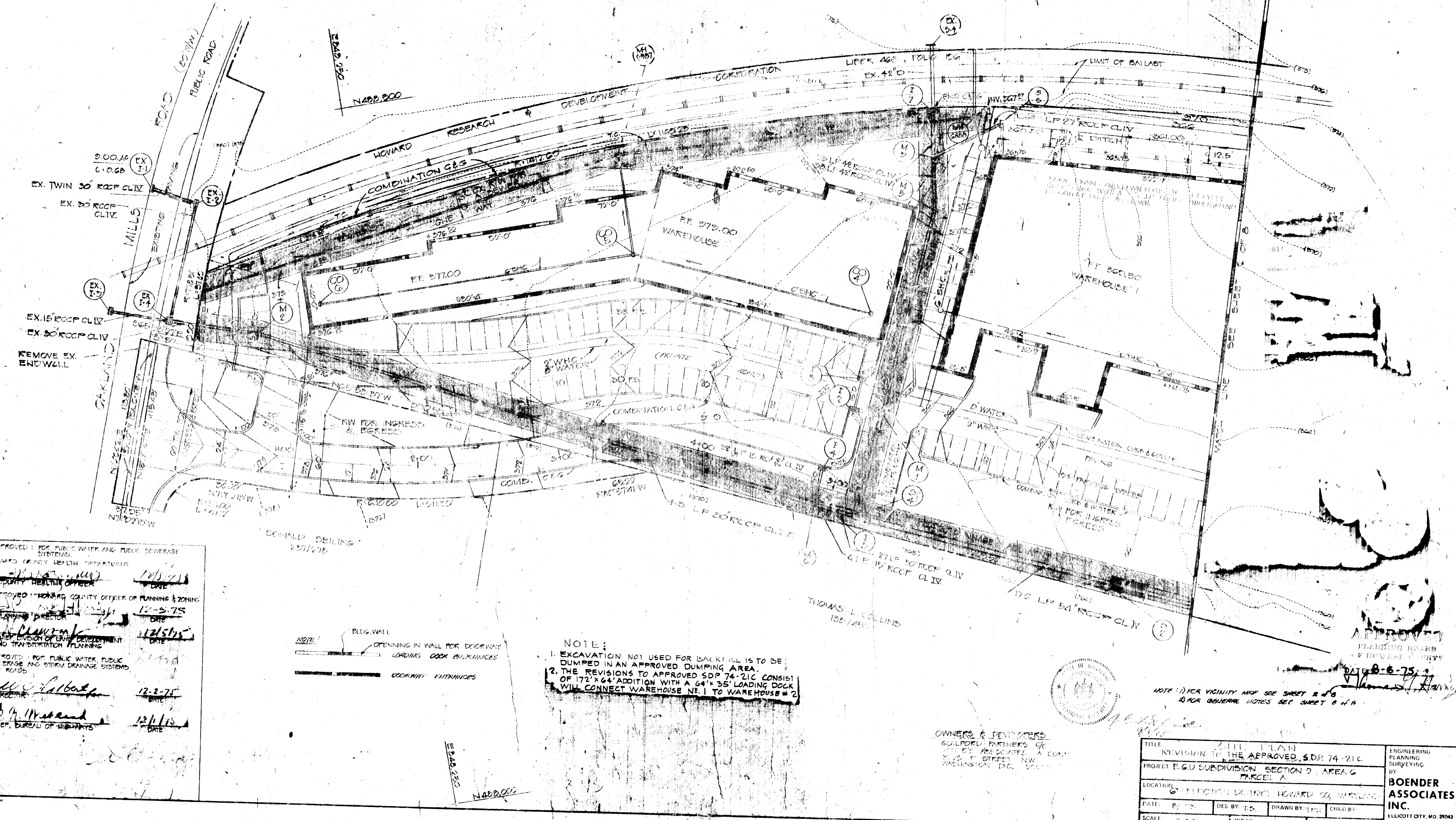


SHEET NO.	DESCRIPTION
1	SITE DEVELOPMENT PLAN
2	SITE DEVELOPMENT PLAN
3	DRAINAGE MAP
4	STORM DRAINAGE PROFILES
5	SEWAGE CONTROL PLAN
6	SEWAGE CONTROL PLAN
7	RAILROAD PROFILE
8	STANDARD DETAILS

SITE ANALYSIS

1. AREA OF PARCEL: 10,381 AC.
2. LIMIT OF SUBMISSION: 0.843 AC.
3. TAX MAP 42 PARCEL A
4. SUBDIVISION PLAT REFERENCE: EGU SUBDIVISION SEC 2 AREA 2 P.B. 25, F. 38
5. FINAL DEVELOPMENT PLAN, PHASE 142 P.B. 20, FOLIOS 257-261
6. PARKING TABULATION FOR ENTIRE SITE
PARKING REQUIRED: 68 SPACES
PARKING PROVIDED: 197 SPACES

E.G.U.
SECTION 2, AREA B
P.B. 25, F. 15



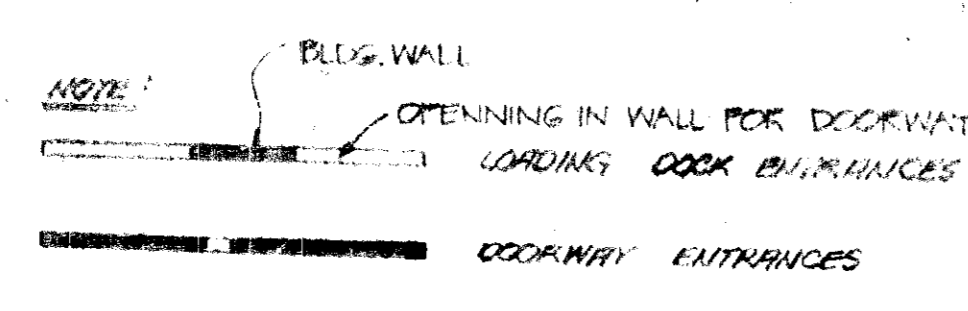
APPROVED FOR PUBLIC WATER AND PUBLIC SEWERAGE SYSTEMS
 HOWARD COUNTY HEALTH DEPARTMENT
 COUNTY HEALTH OFFICER
 DATE 12/5/75

APPROVED HOWARD COUNTY OFFICE OF PLANNING & ZONING
 PLANNING DIRECTOR
 DATE 12/5/75

APPROVED DIVISION OF LAND DEVELOPMENT AND TRANSPORTATION PLANNING
 DATE 12/5/75

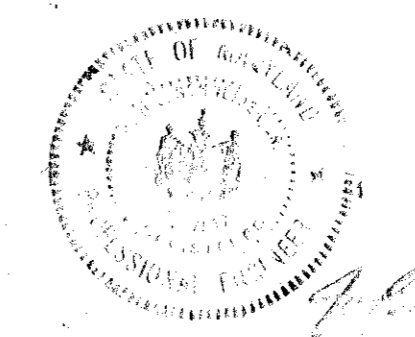
APPROVED FOR PUBLIC WATER, PUBLIC SEWERAGE AND STORM DRAINAGE SYSTEMS AND ROADS
 DIRECTOR
 DATE 12-2-75

CHIEF, BUREAU OF HIGHWAYS
 DATE 12/1/75



NOTE:
 1. EXCAVATION NOT USED FOR BACKFILL IS TO BE DUMPED IN AN APPROVED DUMPING AREA.
 2. THE REVISIONS TO APPROVED SDP 74-21C CONSIST OF 172' X 64' ADDITION WITH A 64' X 35' LOADING DOCK WILL CONNECT WAREHOUSE NO. 1 TO WAREHOUSE #2

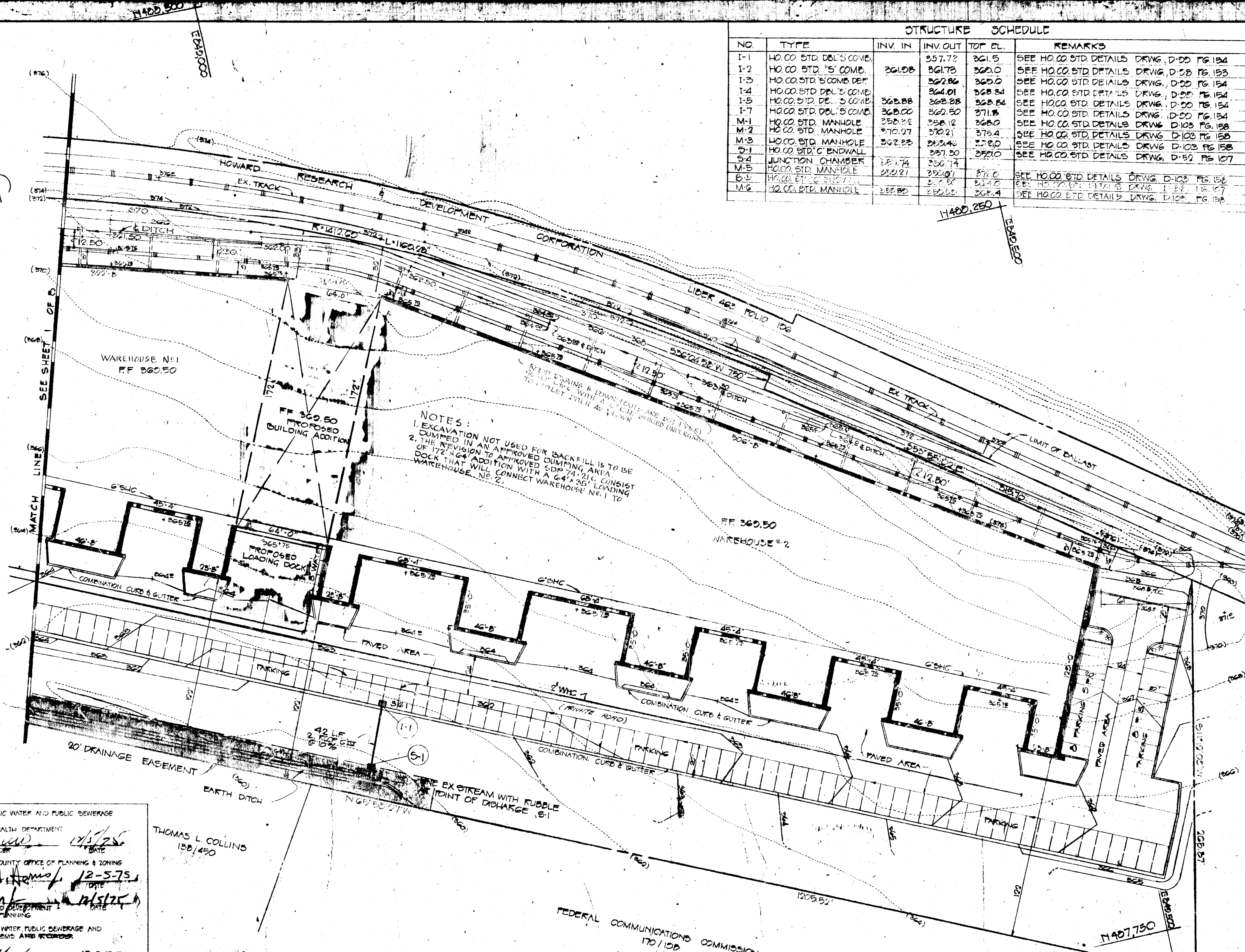
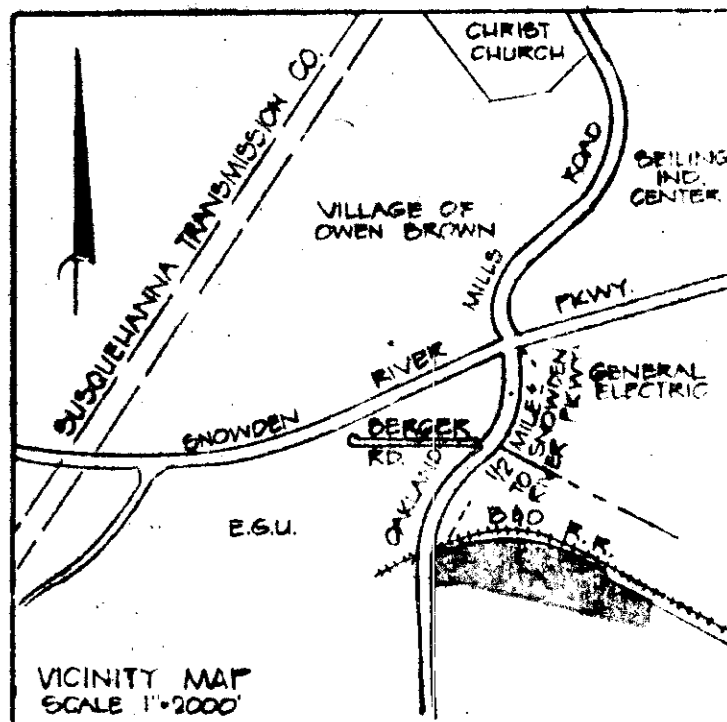
OWNERS & DEVELOPERS
 GUILFORD PARTNERS OF
 WASHINGTON, D.C.



NOTE: 1) FOR VICINITY MAP SEE SHEET 2 OF 8
 2) FOR GENERAL NOTES SEE SHEET 6 OF 8

TITLE REVISION TO THE APPROVED SDP 74-21C		ENGINEERING PLANNING SURVEYING BY BOENDER ASSOCIATES INC.	
PROJECT E.G.U. SUBDIVISION SECTION 2, AREA G PARCEL A		LOCATION SECTION 2, DISTRICT HOWARD CO, MARYLAND	
DATE: 8/75	DES. BY: T.S.	DRAWN BY: J.L.C.	CHECKED BY:
SCALE: 1"=20'	JOB NO.: 75-110	DRWG. NO.: 1 of 3	ELLICOTT CITY, MD. 21034 SALISBURY, MD. 21081 301-466-7777

STRUCTURE SCHEDULE						
NO.	TYPE	INV. IN	INV. OUT	TOP EL.	REMARKS	
I-1	HQ. CO. STD. DBL'S COMB.		357.72	361.5	SEE HQ. CO. STD. DETAILS DRWG. D-30 PG. 134	
I-2	HQ. CO. STD. 'S' COMB.	361.08	361.78	360.0	SEE HQ. CO. STD. DETAILS DRWG. D-30 PG. 133	
I-3	HQ. CO. STD. 'S' COMB. DEF.		362.86	365.0	SEE HQ. CO. STD. DETAILS DRWG. D-30 PG. 134	
I-4	HQ. CO. STD. DBL'S COMB.		364.01	368.84	SEE HQ. CO. STD. DETAILS DRWG. D-30 PG. 134	
I-5	HQ. CO. STD. DBL'S COMB.	368.88	368.88	368.84	SEE HQ. CO. STD. DETAILS DRWG. D-30 PG. 134	
I-7	HQ. CO. STD. DBL'S COMB.	368.00	368.50	371.8	SEE HQ. CO. STD. DETAILS DRWG. D-30 PG. 134	
M-1	HQ. CO. STD. MANHOLE	358.98	358.12	368.0	SEE HQ. CO. STD. DETAILS DRWG. D-103 PG. 158	
M-2	HQ. CO. STD. MANHOLE	370.97	370.21	378.4	SEE HQ. CO. STD. DETAILS DRWG. D-103 PG. 158	
M-3	HQ. CO. STD. MANHOLE	368.88	368.48	378.0	SEE HQ. CO. STD. DETAILS DRWG. D-103 PG. 158	
S-1	JUNCTION CHAMBER	358.74	358.74	358.0	SEE HQ. CO. STD. DETAILS DRWG. D-103 PG. 158	
M-5	HQ. CO. STD. MANHOLE	358.21	358.01	370.0	SEE HQ. CO. STD. DETAILS DRWG. D-103 PG. 158	
S-2	HQ. CO. STD. ENDWALL	358.21	358.01	370.0	SEE HQ. CO. STD. DETAILS DRWG. D-103 PG. 158	
M-6	HQ. CO. STD. MANHOLE	358.80	358.80	368.4	SEE HQ. CO. STD. DETAILS DRWG. D-103 PG. 158	



APPROVED FOR PUBLIC WATER AND PUBLIC SEWERAGE SYSTEMS
 HOWARD COUNTY HEALTH DEPARTMENT
 COUNTY HEALTH OFFICER
 THOMAS L. COLLINS
 130/490
 DATE 12/5/75

APPROVED - HOWARD COUNTY OFFICE OF PLANNING & ZONING
 PLANNING DIRECTOR
 DATE 12-5-75

APPROVED FOR PUBLIC WATER, PUBLIC SEWERAGE AND STORM DRAINAGE SYSTEMS AND FLOODS
 DIRECTOR
 DATE 12-2-75

CHIEF, BUREAU OF HIGHWAYS
 DATE 12/1/75

COLUMBIA INDUSTRIAL DEVELOPMENT CORP.
 515/06

APPROVED
 PLANNING BOARD
 OF HOWARD COUNTY
 DATE 8-6-75
 THOMAS L. COLLINS

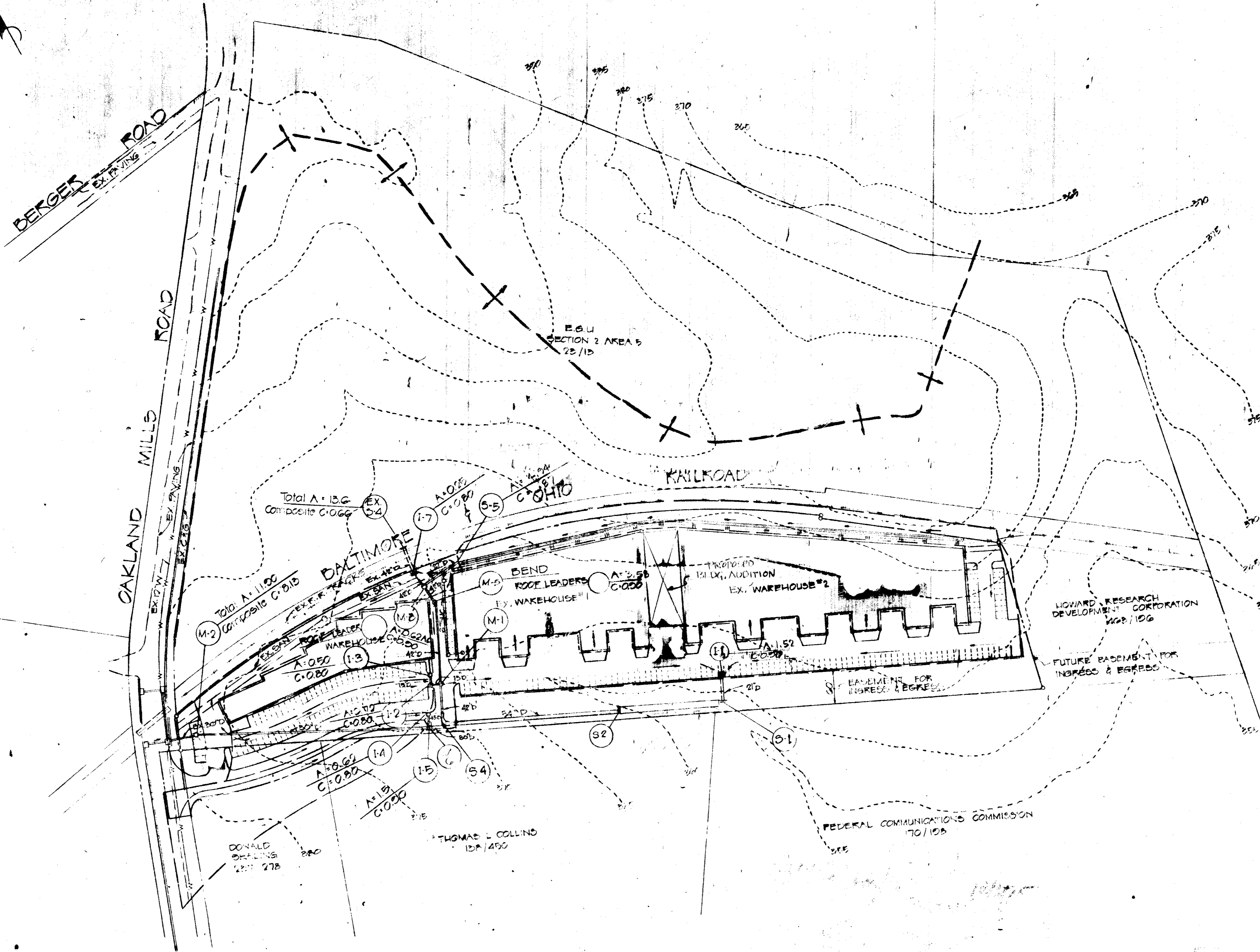
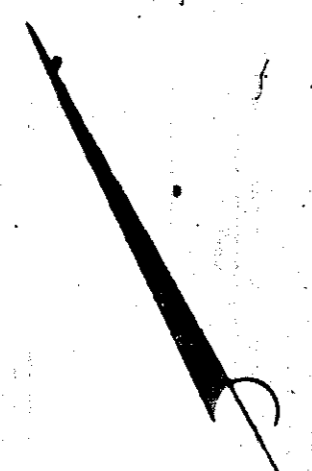
OWNERS & DEVELOPERS
 GULFORD PARTNERS %
 VAN E'S ASSOCIATES, A CORP.
 5225 P STREET, N.W.
 WASHINGTON, D.C. 20007

TITLE: SITE PLAN
 REVISION TO THE APPROVED S.D.P. 74-21C
 PROJECT: E.G.U. SUBDIVISION, SECTION 2, AREA G
 PARCEL A
 LOCATION: 6TH ELECTION DISTRICT, HOWARD CO., MARYLAND
 DATE: 8/1/75 DES. BY: TS DRAWN BY: TFD CHKD BY:
 SCALE: 1"=20' JOB NO.: 7570 DRWG. NO.: 248

ENGINEERING
 PLANNING
 SURVEYING
 BY
BOENDER ASSOCIATES INC.
 ELLICOTT CITY, MD. 21043
 SALISBURY, MD. 21601
 301-466-7177



SDP-75-110c



APPROVED: FOR PUBLIC WATER AND PUBLIC SEWERAGE SYSTEMS, HOWARD COUNTY HEALTH DEPARTMENT.
[Signature] 11/5/75
 COUNTY HEALTH OFFICER DATE

APPROVED: HOWARD COUNTY OFFICE OF PLANNING AND ZONING.
[Signature] 12-5-75
 PLANNING DIRECTOR DATE

APPROVED: DIVISION OF LAND DEVELOPMENT AND TRANSPORTATION PLANNING.
[Signature] 12/5/75
 DATE

APPROVED: FOR PUBLIC WATER, PUBLIC SEWERAGE AND STORM DRAINAGE SYSTEMS AND ROADS.
[Signature] 12-2-75
 DIRECTOR DATE

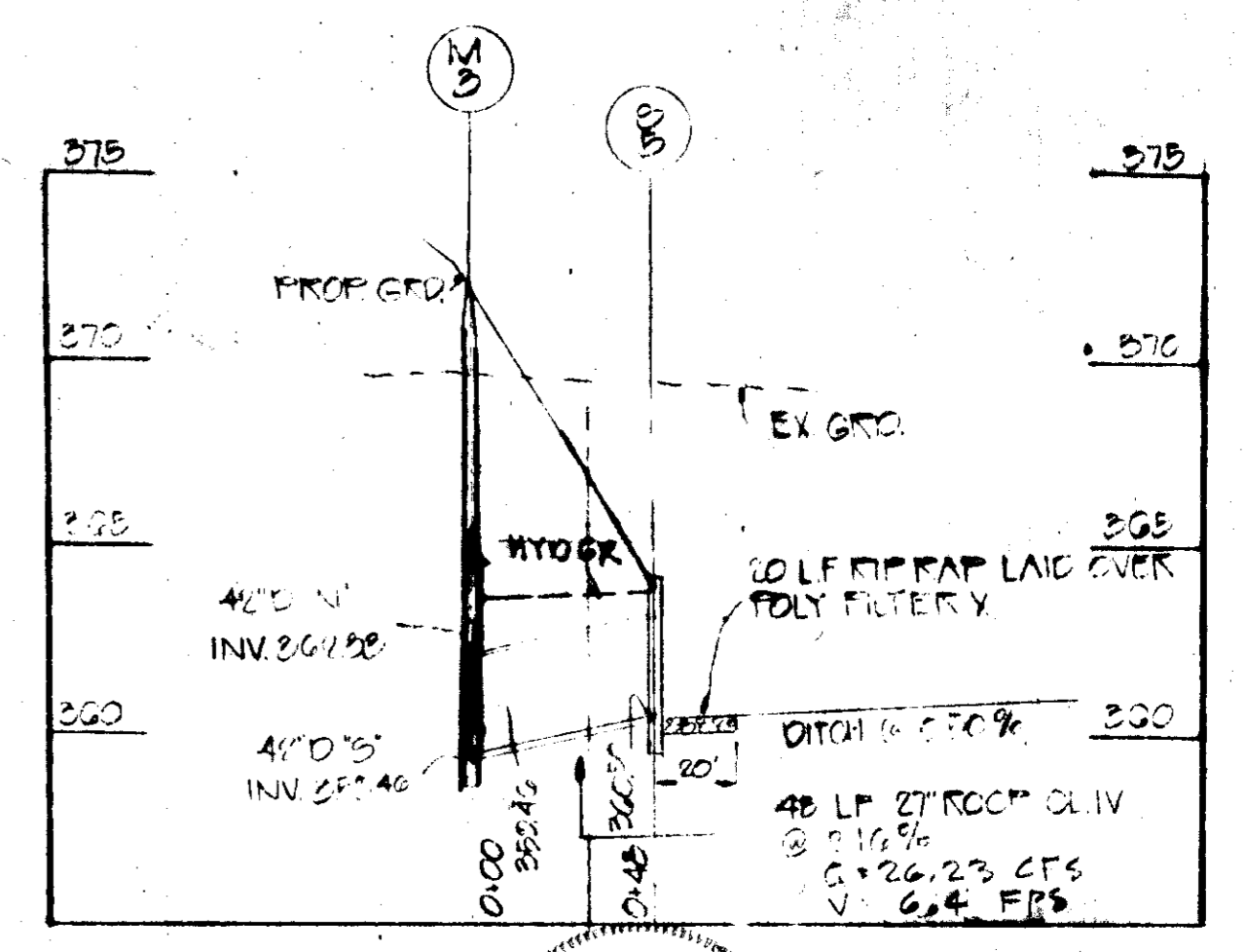
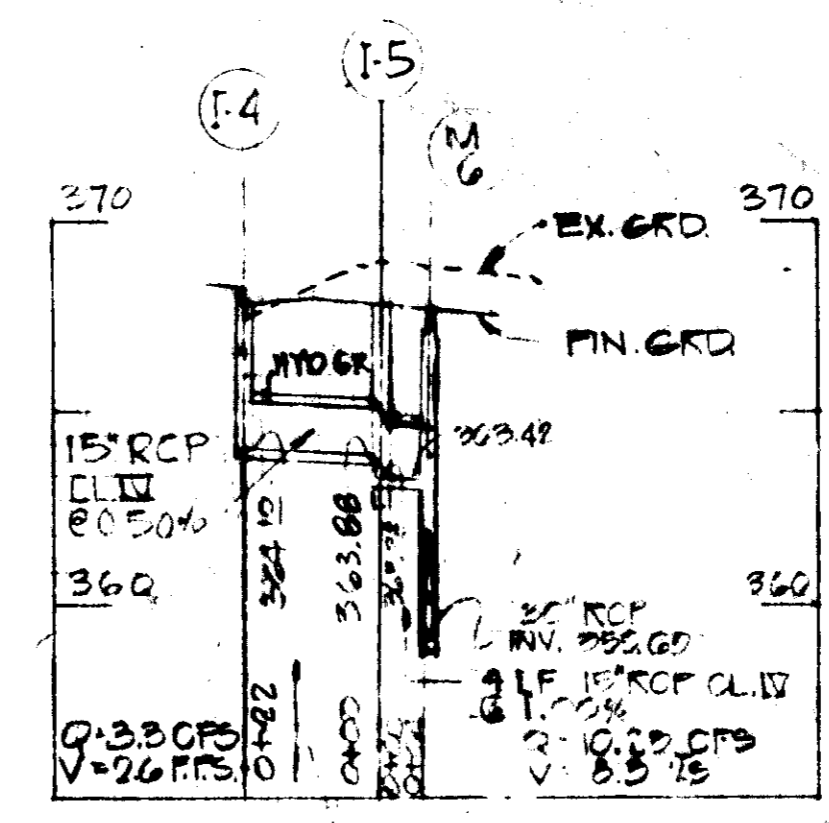
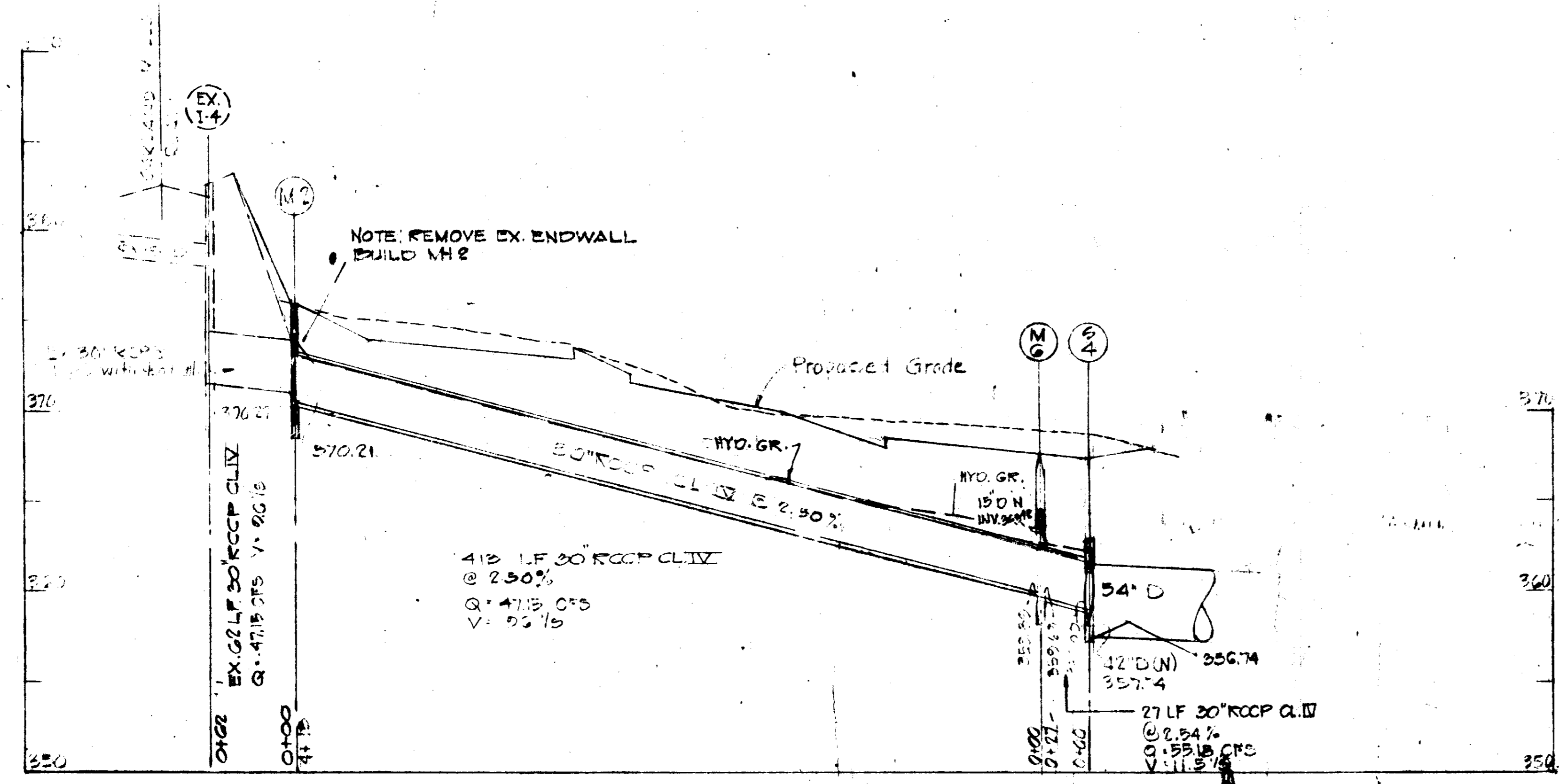
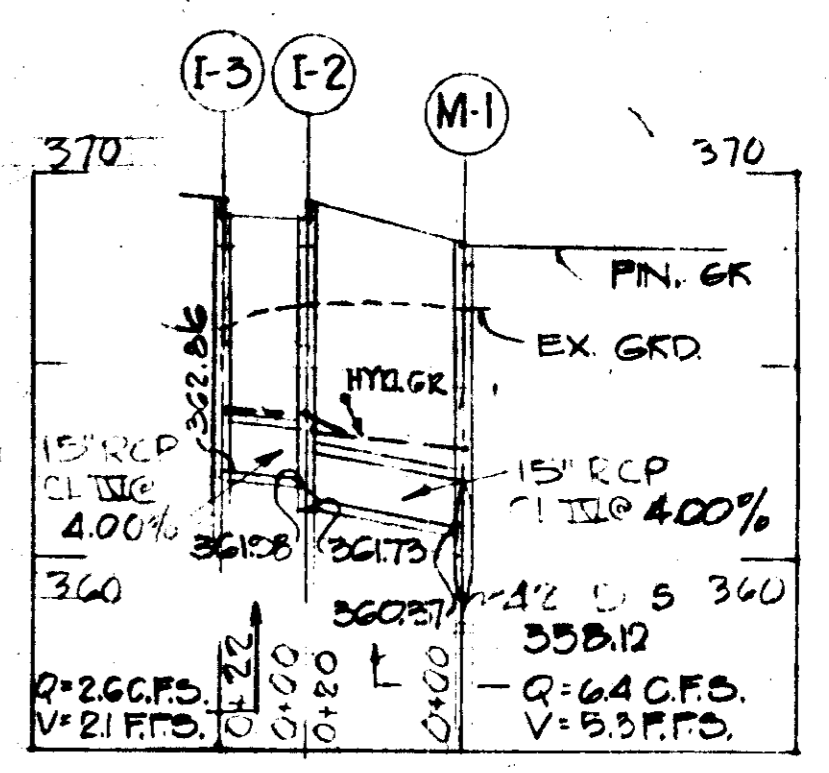
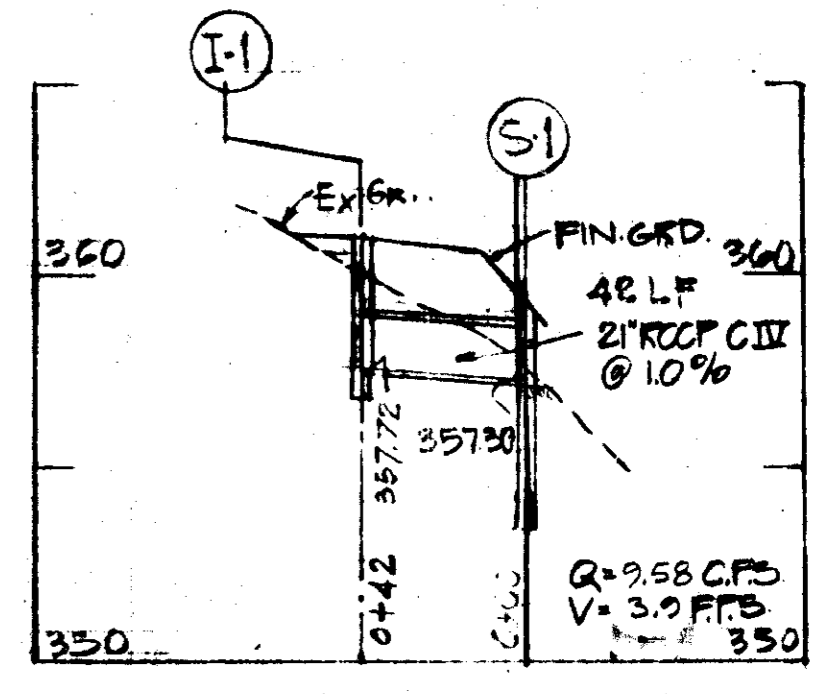
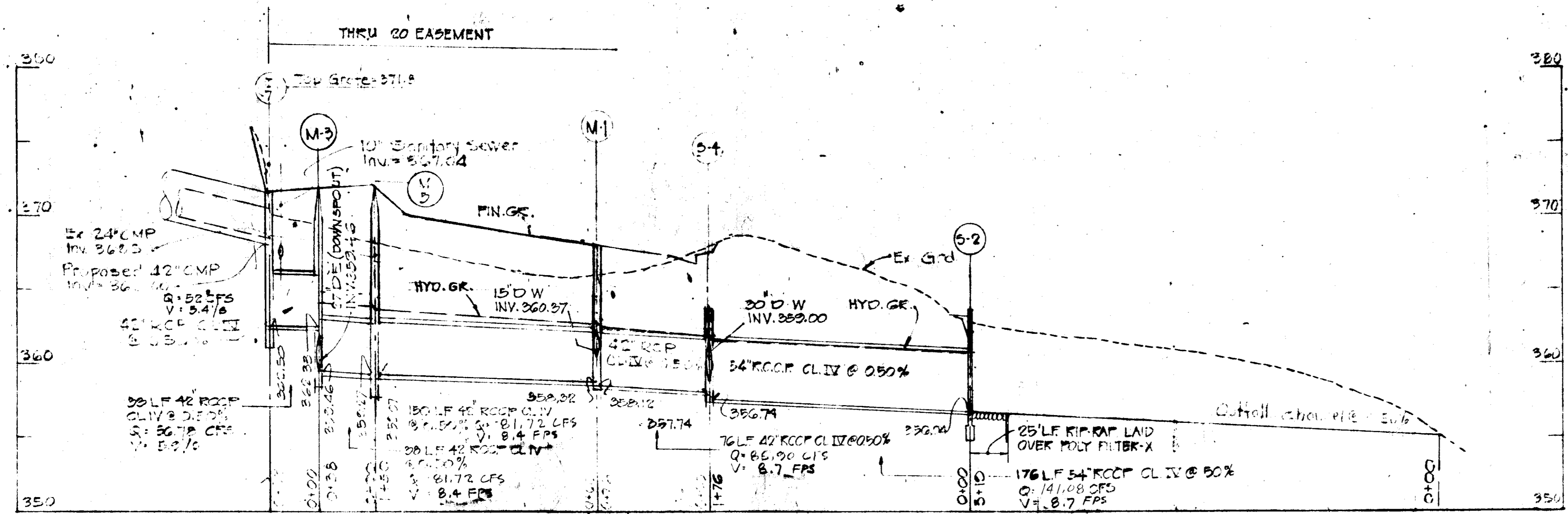
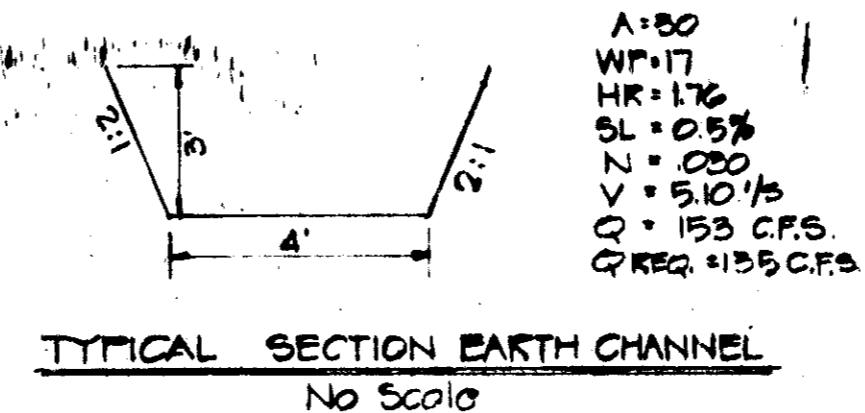
[Signature] 12/1/75
 CHIEF, BUREAU OF HIGHWAYS DATE



APPROVED
 PLANNING BOARD
 OF HOWARD COUNTY
 DATE 8-6-75
[Signature]

TITLE		DRAINAGE AREA MAP		ENGINEERING
REVISION TO APPROVED: S.D.P. 74-21-C				PLANNING
PROJECT E.G.U. SUBDIVISION, SECTION 2, AREA G				SURVEYING
PARCEL A				BY
LOCATION		4TH ELECTION DISTRICT, HOWARD CO., MARYLAND		BOENDER ASSOCIATES INC.
DATE: JULY 31, 1975	DES. BY: T.D.	DRAWN BY: T.D.	CHKD BY:	ELLCOTT CITY, MD. 21043
SCALE: 1" = 100'	JOB NO.: 7200	DRWG. NO.: 5075		SALISBURY, MD. 21801
				301-465-7777

SDP-75-110c



APPROVED FOR PUBLIC WATER AND PUBLIC SEWER SYSTEMS,
HOWARD COUNTY HEALTH DEPARTMENT

COUNTY HEALTH OFFICER _____ DATE _____

APPROVED: HOWARD COUNTY OFFICER OF PLANNING & ZONING
Thomas L. Hamby 12-5-75

PLANNING DIRECTOR _____ DATE _____

CITY DIVISION OF LAND DEVELOPMENT, DATE _____
AND TRANSPORTATION/PLANNING.

APPROVED FOR PUBLIC WATER, PUBLIC SEWERAGE AND STORM DRAINAGE SYSTEMS AND ROADS

W. L. Roberts 12-2-75
DIRECTOR DATE

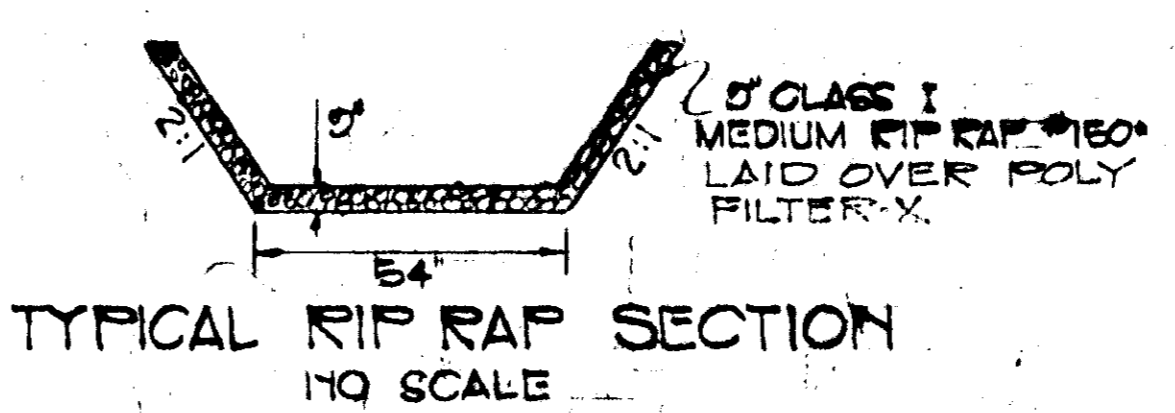
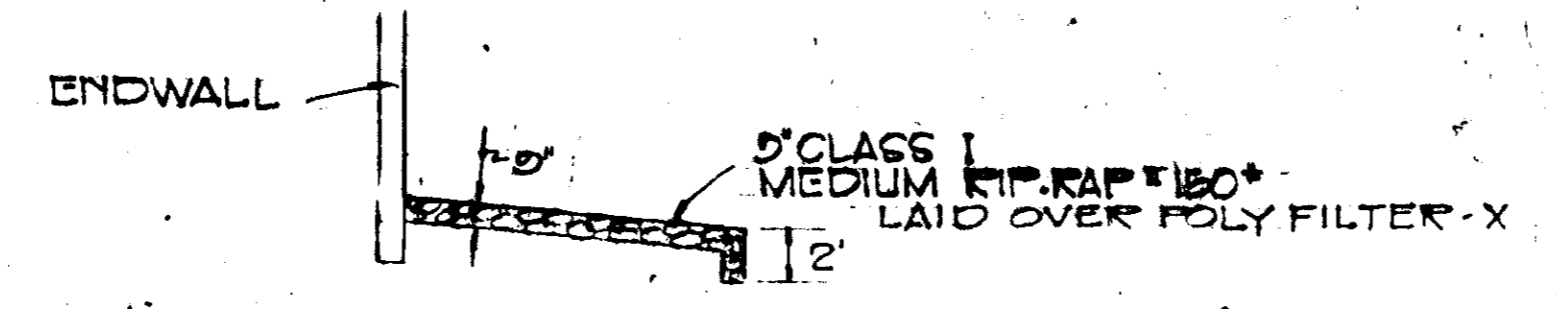
J. H. Haldane 12/1/75
CHIEF BUREAU OF HIGHWAYS DATE

APPROVED
PLANNING BOARD
OF HOWARD COUNTY

DATE 8-6-75

John A. Schuch 7/2/75
Thomas L. Hamby

PROFILE
HOR: 1"=50'
VERT: 1"=5'

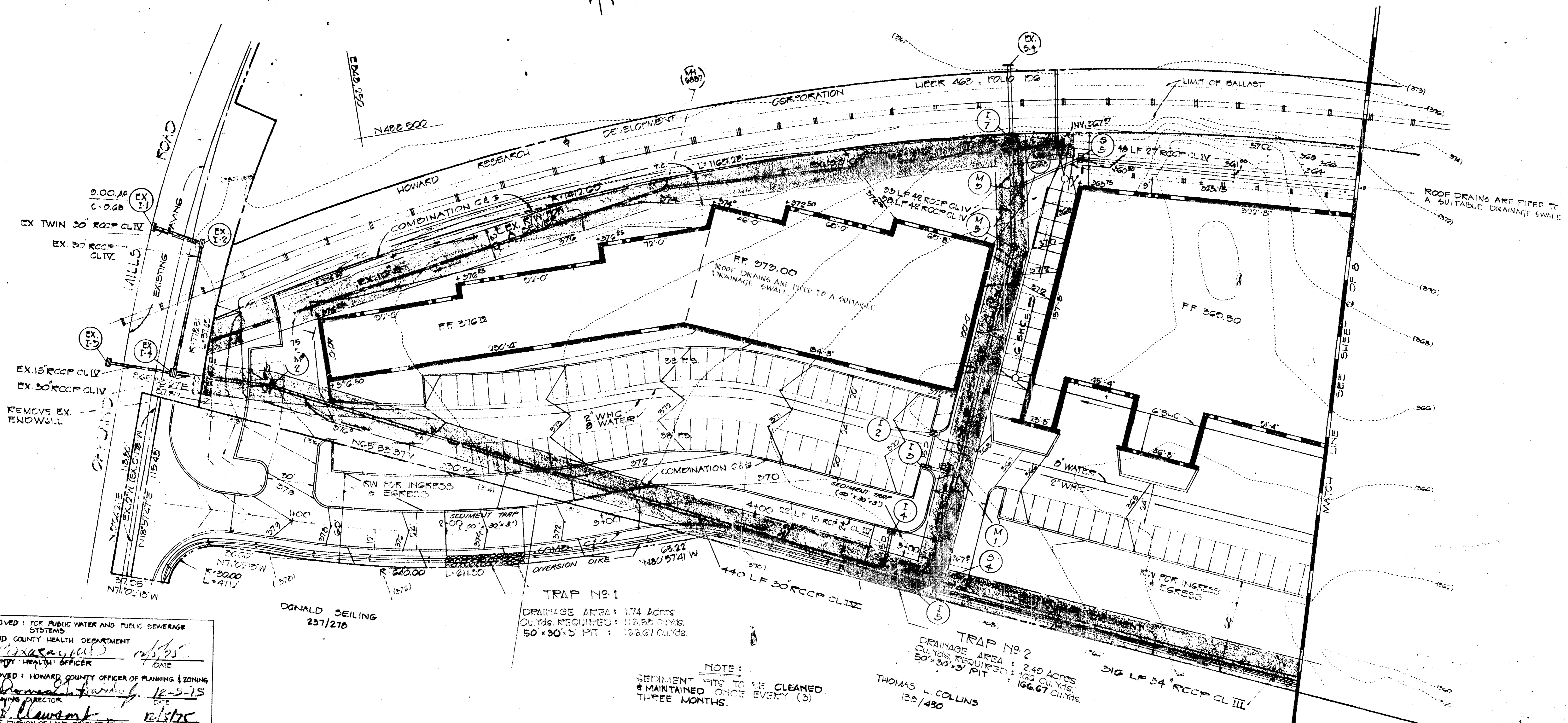


TITLE		STORM DRAINAGE PLAN		ENGINEERING	
REVISION TO APPROVED S.D.P. 74-216				PLANNING	
PROJECT		E.G.U. SUBDIVISION, SECTION 2, AREA G		SURVEYING	
LOCATION		6TH ELECTION DISTRICT, HOWARD COUNTY, MD		BY	
DATE		7-31-73		BOENDER ASSOCIATES INC.	
DES. BY		TS		DRAWN BY	
DRAWN BY		JAS		CHKD BY:	
SCALE		AS SHOWN		JOB NO. 7579	
JOB NO.		7579		DRWG. NO. 4 OF 8	

SDP-75-110c

REVIEWED FOR Howard S.C.D.
 AND MEETS TECHNICAL REQUIREMENTS.
 Eric V. Harmer
 U.S. SOIL CONSERVATION SERVICE DATE 11/20/75
 THIS DEVELOPMENT PLAN IS APPROVED
 FOR SOIL EROSION AND SEDIMENT CONTROL
 BY THE HOWARD SOIL CONSERVATION DISTRICT
 APPROVED Robert S. Selman DATE 11/20/75
 HOWARD SOIL CONSERVATION DISTRICT

E.G.U.
 SECTION 2, AREA 6
 T.D. 43, P. 15



APPROVED FOR PUBLIC WATER AND PUBLIC SEWERAGE SYSTEMS
 HOWARD COUNTY HEALTH DEPARTMENT
 COUNTY HEALTH OFFICER [Signature] DATE 11/25/75
 APPROVED FOR HOWARD COUNTY OFFICE OF PLANNING & ZONING
 PLANNING DIRECTOR [Signature] DATE 12-5-75
 CHIEF DIVISION OF LAND DEVELOPMENT AND TRANSPORTATION PLANNING
 APPROVED FOR PUBLIC WATER, PUBLIC SEWERAGE AND STORM DRAINAGE SYSTEMS AND ROADS
 DIRECTOR [Signature] DATE 12-2-75
 CHIEF, BUREAU OF HIGHWAYS [Signature] DATE 12/1/75

TRAP NO. 1
 DRAINAGE AREA: 1.74 ACRES
 CU. YDS. REQUIRED: 112.50 CU. YDS.
 50' x 30' x 3' PIT: 120.67 CU. YDS.

TRAP NO. 2
 DRAINAGE AREA: 2.40 ACRES
 CU. YDS. REQUIRED: 166 CU. YDS.
 50' x 30' x 3' PIT: 166.67 CU. YDS.

NOTE:
 SEDIMENT PITS TO BE CLEANED & MAINTAINED ONCE EVERY (3) THREE MONTHS.

OWNERS & DEVELOPER
 GUILFORD PARTNERS C/O
 VAN E'S ASSOCIATES A CORP
 3229 P STREET N.W.
 WASHINGTON D.C. 20007

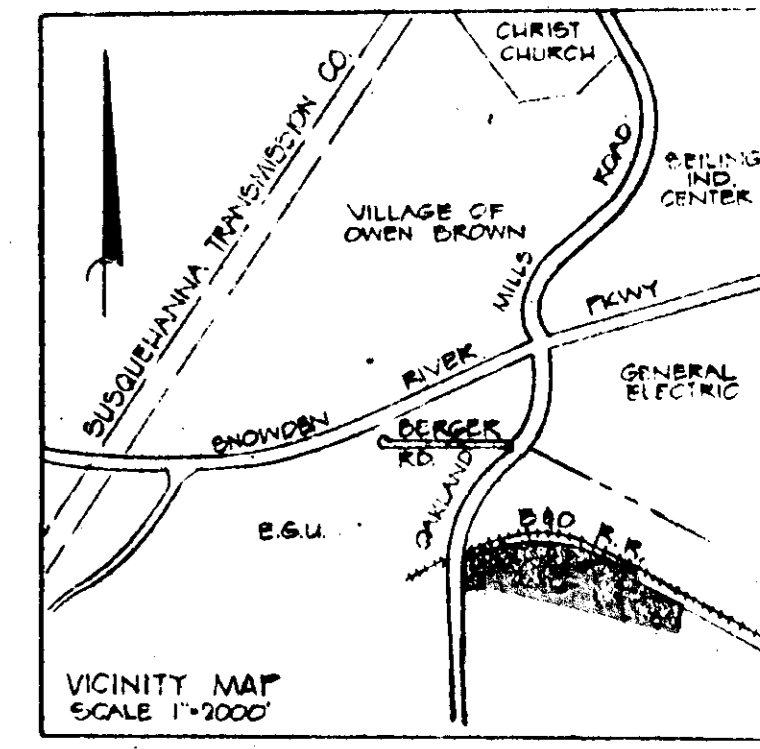


APPROVED
 PLANNING BOARD
 OF HOWARD COUNTY
 DATE 8-6-75
[Signature]

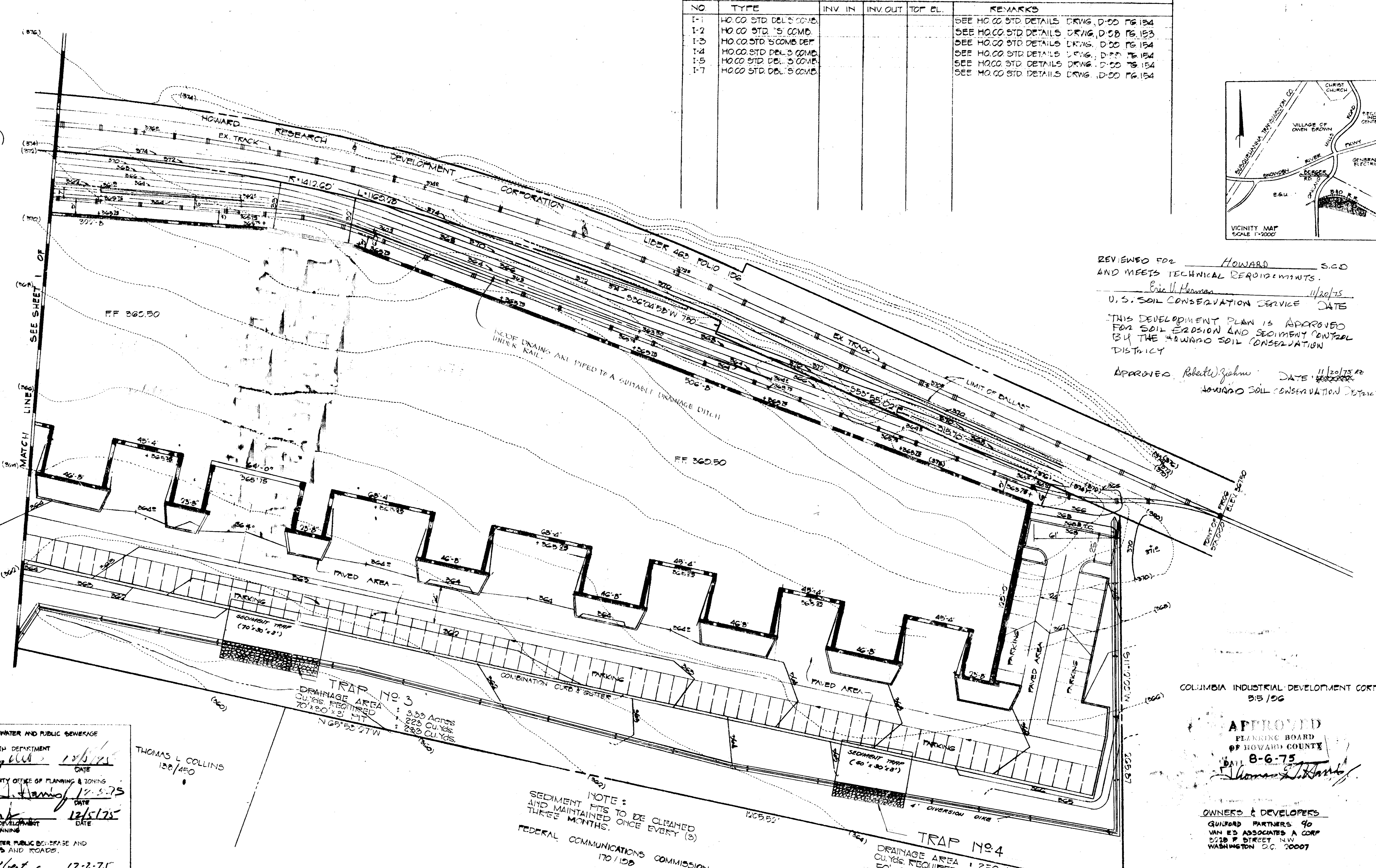
TITLE		SEDIMENT CONTROL PLAN		ENGINEERING PLANNING SURVEYING BY	
PROJECT		E.G.U. SUBDIVISION SECTION 2, AREA 6		BOENDER ASSOCIATES INC.	
LOCATION		6TH ELECTION DISTRICT HOWARD CO. MARYLAND		SALISBURY, MD. 21801	
DATE	DES BY	DRAWN BY	CHKD BY	JOB NO.	
8/1/75	TS	TPD	JLS	7575	
SCALE	JOB NO.		DRAWG NO.		50FB
1"=50'	7575		50FB		

SDP-75-110c

NO	TYPE	INV. IN	INV. OUT	TOP EL.	REMARKS
I-1	HO. CO. STD. DET. S. COMB.				SEE HO. CO. STD. DETAILS DRWG. D-00 PG. 154
I-2	HO. CO. STD. 'S. COMB.				SEE HO. CO. STD. DETAILS DRWG. D-00 PG. 154
I-3	HO. CO. STD. 'S. COMB. DET.				SEE HO. CO. STD. DETAILS DRWG. D-00 PG. 154
I-4	HO. CO. STD. DET. S. COMB.				SEE HO. CO. STD. DETAILS DRWG. D-00 PG. 154
I-5	HO. CO. STD. DET. S. COMB.				SEE HO. CO. STD. DETAILS DRWG. D-00 PG. 154
I-7	HO. CO. STD. DET. S. COMB.				SEE HO. CO. STD. DETAILS DRWG. D-00 PG. 154



REVIEWED FOR HOWARD S.C.D. AND MEETS TECHNICAL REQUIREMENTS.
 Eric V. Heaman 11/20/75
 U.S. SOIL CONSERVATION SERVICE DATE
 THIS DEVELOPMENT PLAN IS APPROVED FOR SOIL EROSION AND SEDIMENT CONTROL BY THE HOWARD SOIL CONSERVATION DISTRICT
 APPROVED Robert W. Zahm DATE 11/20/75
 HOWARD SOIL CONSERVATION DISTRICT



APPROVED FOR PUBLIC WATER AND PUBLIC SEWERAGE SYSTEMS
 HOWARD COUNTY HEALTH DEPARTMENT
 COUNTY HEALTH OFFICER
 DATE 12/1/75
 THOMAS L. COLLINS 138/450

APPROVED HOWARD COUNTY OFFICE OF PLANNING & ZONING
 PLANNING DIRECTOR
 DATE 12/5/75
 CHIEF, DIVISION OF LAND DEVELOPMENT AND TRANSPORTATION PLANNING

APPROVED FOR PUBLIC WATER PUBLIC SEWERAGE AND STORM DRAINAGE SYSTEMS AND ROADS.
 DIRECTOR
 DATE 12-2-75
 CHIEF, BUREAU OF HIGHWAYS

DATE 12/1/75

NOTE:
 SEDIMENT PITS TO BE CLEANED AND MAINTAINED ONCE EVERY (3) THREE MONTHS.
 FEDERAL COMMUNICATIONS COMMISSION 170/108

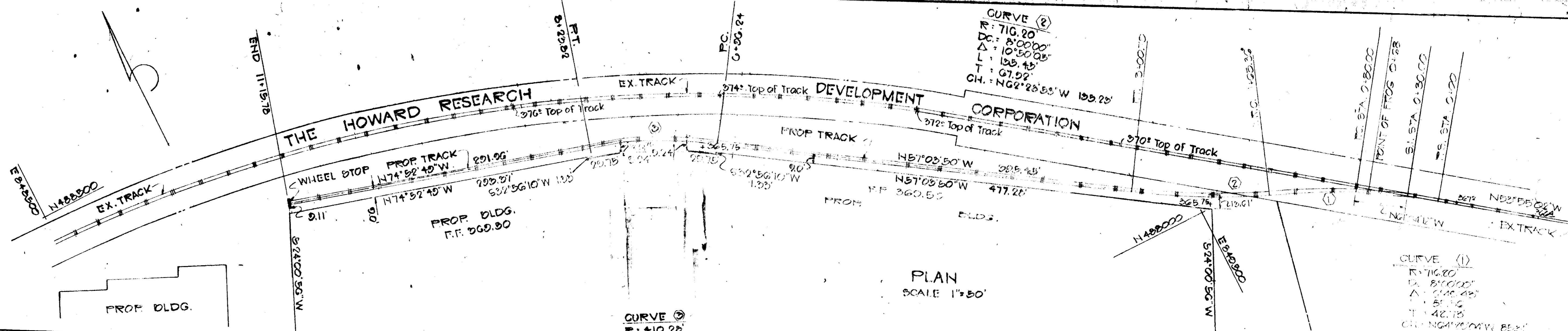
COLUMBIA INDUSTRIAL DEVELOPMENT CORP.
 515/96

APPROVED
 PLANNING BOARD
 OF HOWARD COUNTY
 DATE 8-6-75
 OWNERS & DEVELOPERS
 GUNROB PARTNERS 90
 VAN ED ASSOCIATES A CORP
 2028 P STREET N.W.
 WASHINGTON D.C. 20007

TITLE	SEDIMENT CONTROL PLAN REVISION TO APPROVED S.D.P. 74-21-C		
PROJECT	E.G.U. SUBDIVISION SECTION 2, AREA 6 PARCEL A		
LOCATION	6TH ELECTION DISTRICT HOWARD CO MARYLAND		
DATE	DES BY	DRAWN BY	CHKD BY
8/1/75	T.S.	TRD	JLS
SCALE	JOB NO.	DRWG. NO.	
1"=30'	7575	6 of 6	



SDP-75-110c



APPROVED FOR PUBLIC WATER AND PUBLIC SEWERAGE SYSTEMS, HOWARD COUNTY HEALTH DEPARTMENT.

APPROVED FOR PUBLIC WATER, PUBLIC SEWERAGE AND STORM DRAINAGE SYSTEMS AND ROADS.

COUNTY HEALTH OFFICER: *[Signature]* DATE: 12-5-75

APPROVED: OFFICE OF PLANNING AND ZONING: *[Signature]* DATE: 12/5/75

PLANNING DIRECTOR: *[Signature]* DATE: 12/5/75

CHIEF, DIVISION OF LAND DEVELOPMENT AND TRANSPORTATION PLANNING: *[Signature]* DATE: 12/5/75

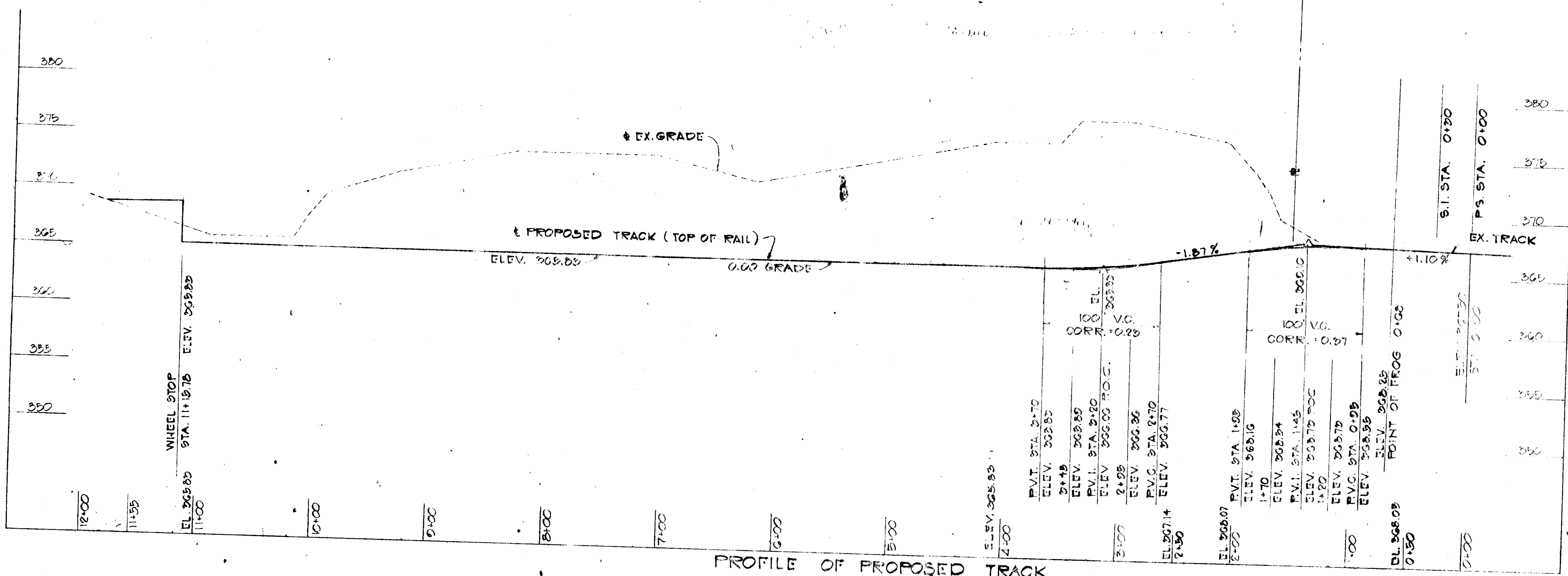
DIRECTOR: *[Signature]* DATE: 12-2-75

CHIEF, BUREAU OF HIGHWAYS: *[Signature]* DATE: 12/1/75

CURVE 3
 R: 410.25'
 DC: 1257.84'
 Δ: 174°50'
 L: 127.50'
 T: 64.51'
 CH: N65°58'15" W 127.07'

PLAN
 SCALE 1"=50'

CURVE 1
 R: 116.00'
 DC: 810.00'
 Δ: 134°25'
 L: 51.16'
 T: 42.13'
 CH: N64°10'00" W 122.13'



PROFILE OF PROPOSED TRACK
 SCALE: HOR. 1"=50'
 VERT. 1"=5'



APPROVED
 BOARD OF ENGINEERS
 OF HOWARD COUNTY
 8-6-75
[Signature]

TITLE: RAILROAD DETAILS			
REVISION 10 APPROVED SDP 74-71-C			
PROJECT E.G.U. SUBDIVISION, SECTION 9, AREA 2			
PARCEL A			
LOCATION 67 ELECTION DRIVE, HOWARD COUNTY, MARYLAND			
DATE: JULY 31, 1975	DES. BY: T.E.	DRAWN BY: T.E.	CHECKED BY:
SCALE: AS SHOWN	JOB NO.: 7210-01	DRWG. NO.: 7 OF 8	
ENGINEERING PLANNING SURVEYING BY: BOENDER ASSOCIATES INC. ELLICOTT CITY, MD. 21043 SALISBURY, MD. 21801 301-465-7777			

SDP-75-110C

SEDIMENT CONTROL NOTES

- 1) THE H. S. C. D. AND BUREAU OF LICENSE, INSPECTION, AND PERMITS WILL BE GIVEN 24 HOURS NOTICE PRIOR TO ANY GRADING.
- 2) ALL SEDIMENT CONTROL STRUCTURES SHOWN ON THIS PLAN, UNLESS OTHERWISE SPECIFIED, WILL BE INSTALLED AND STABILIZED IN ACCORDANCE WITH NOTE #9 PRIOR TO ANY OTHER GRADING OR EARTH DISTURBANCE ON THIS SITE.
- 3) AS SOON AS ROUGH GRADING IS COMPLETED, AREA TO BE PAVED WILL BE STABILIZED WITH BASE MATERIAL.
- 4) ALL CUT AND FILL SLOPES WILL BE A MAXIMUM OF 3:1.
- 5) FOLLOWING THE STABILIZATION OF ALL AREAS, UPGRADE THE AREA OF THE SEDIMENT CONTROL. MEASURES MAY BE REMOVED AND GRADED TO THE FINAL GRADES PLANNED AND STABILIZED IMMEDIATELY.
- 6) ELEVATIONS MARKED WITH (X) ARE FINISHED GRADES.
- 7) IN THE EVENT OF EXCESS OF MATERIAL, THE WASTE WILL BE STOCKPILED WITH A MAXIMUM 2:1 SLOPE ON AN AREA WHICH HAS BEEN CLEARED ON THE SITE. STOCKPILED MATERIAL WILL BE STABILIZED IN ACCORDANCE WITH NOTE #9.
- 8) SEDIMENT CONTROL MEASURES WILL NOT BE REMOVED UNTIL APPROVAL IS OBTAINED FROM THE H. S. C. D..
- 9) TEMPORARY STABILIZATION:
 APPLY: 2000 LBS. / ACRE OR 46 LBS. / SQ. FT. OF PULVERIZED DOLOMITIC LIMESTONE.
 500 LBS. / ACRE OR 11.5 LBS. / 1000 SQ. FT. OF 5-5-5 FERTILIZER. PLANT TO RYEGRASS @ 40 LBS. / ACRE.
 FERTILIZE WITH 5-10-10, AND MULCH WITH STRAW @ 1 1/2 TONS / ACRE.
- 0) PERMANENT STABILIZATION:
 APPLY: 2000 LBS. / ACRE OF PULVERIZED DOLOMITIC LIMESTONE.
 700 LBS. / ACRE OF 0-20-0 SUPER PHOSPHATE.
 1000 LBS. / ACRE OF 5-10-10 FERTILIZER.
 SEED: 85 LBS. / ACRE OF KENTUCKY 31 TALL FESCUE.
 40 LBS. / ACRE OF KENTUCKY BLUE GRASS.
 25 LBS. / ACRE OF ANNUAL RYE GRASS.
 NOTE: SEEDING MAY BE DONE BETWEEN MARCH 1 - MAY 1, OR AUGUST 1 - OCTOBER 1 ONLY.
 MULCH: 2 TONS / ACRE OF UNWEATHERED WHEATSTRAW, TIE MULCH DOWN WITH 400 GAL. / ACRE OF LIQUID ASPHALT.

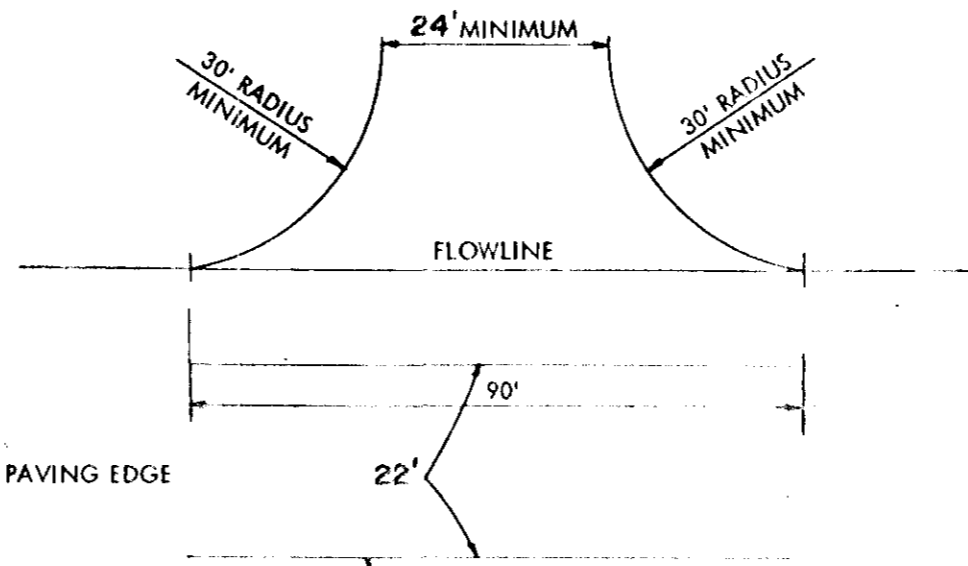
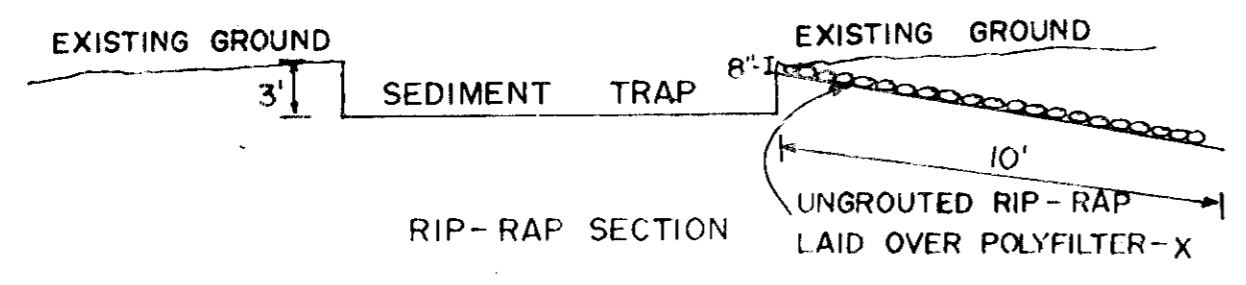
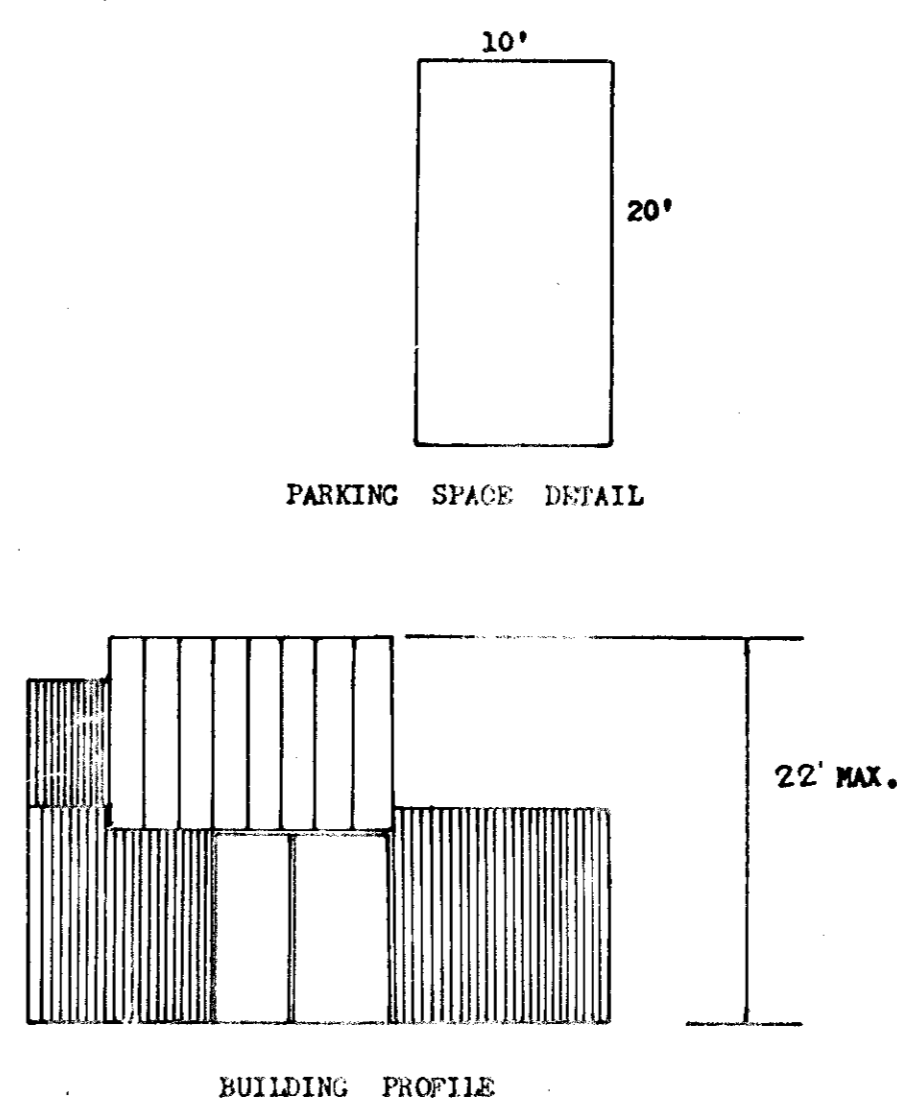
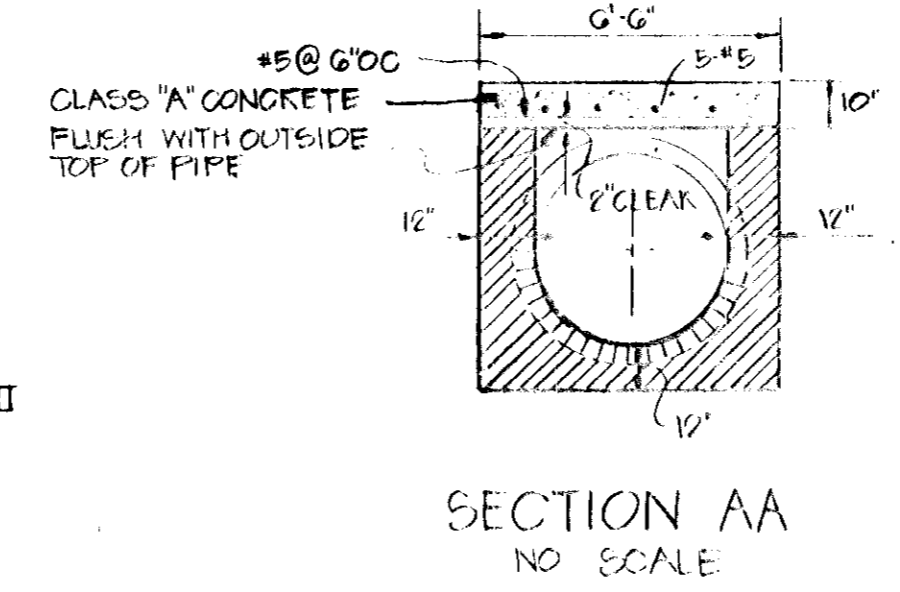
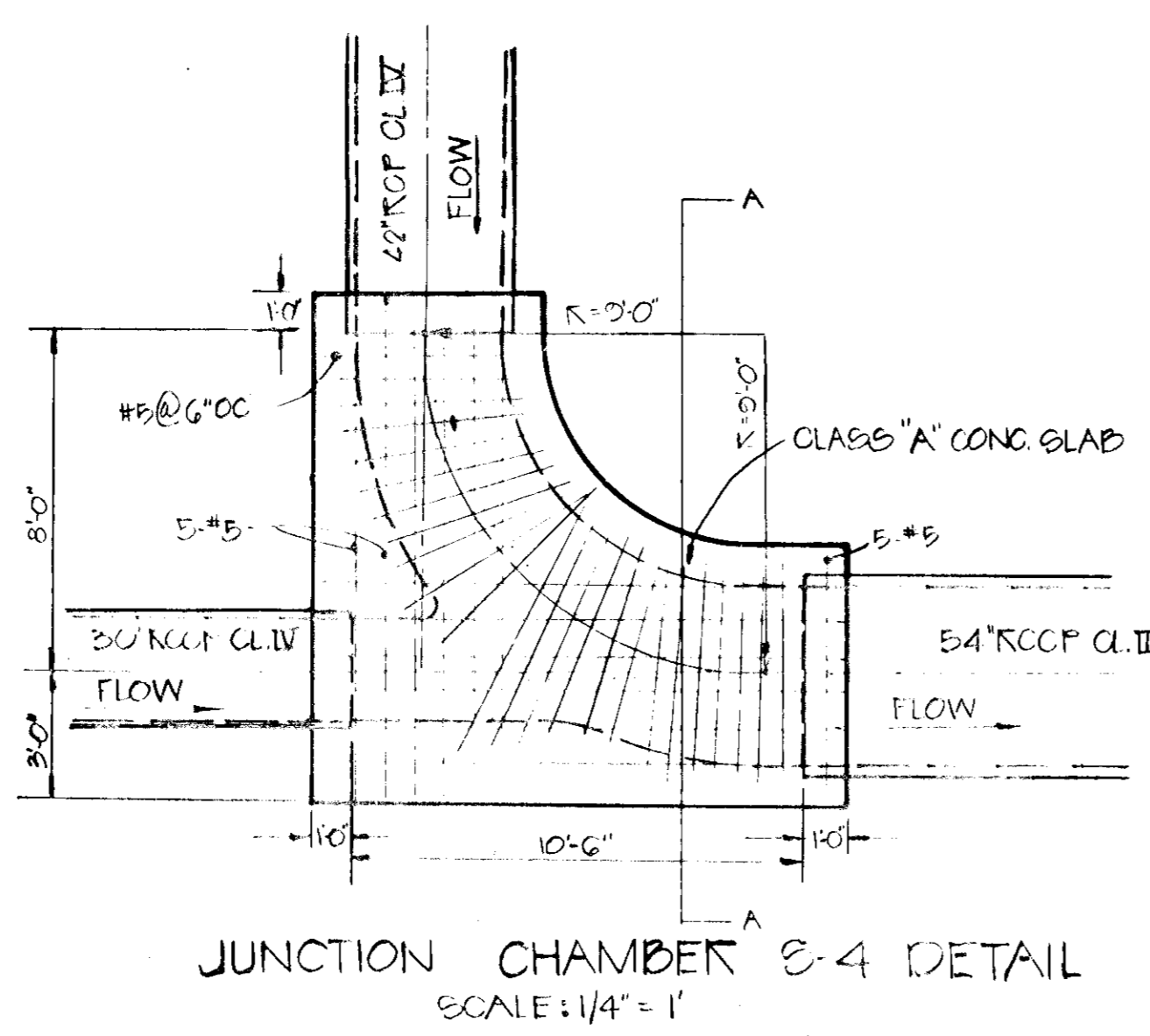
REVIEWED FOR Howard S. C. D. AND
 NEEDS TECHNICAL REQUIREMENTS.
Eric V. Hagan 11/20/75
 U. S. SOIL CONSERVATION SERVICE DATE

THIS DEVELOPMENT PLAN IS APPROVED FOR SOIL EROSION AND
 SEDIMENT CONTROL BY THE HOWARD SOIL CONSERVATION DISTRICT
 APPROVED: Robert Zielony 11/20/75
 HOWARD SOIL CONSERVATION DIST. DATE

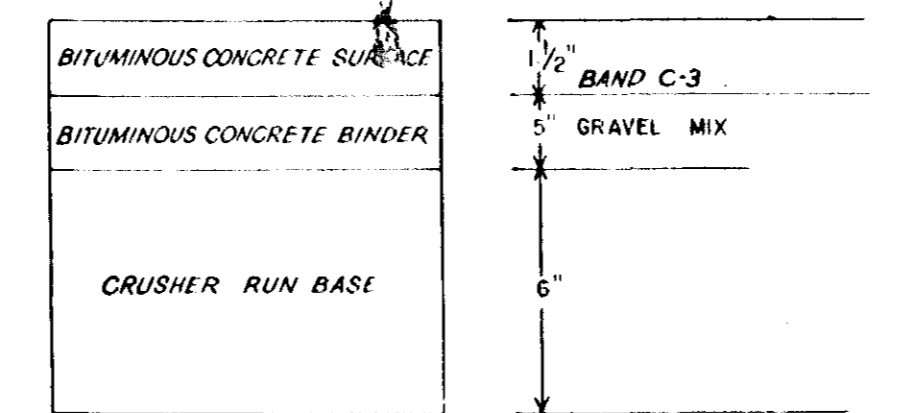
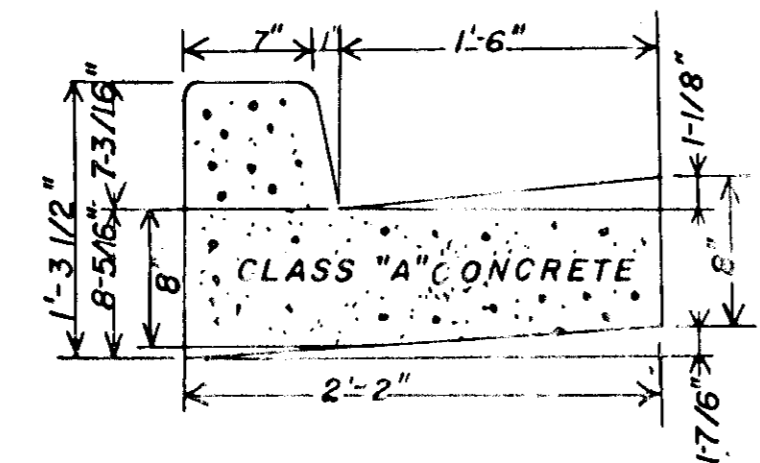
I CERTIFY THAT THIS PLAN FOR EROSION AND SEDIMENT
 CONTROL REPRESENTS A PRACTICAL AND WORKABLE PLAN BASED
 ON MY PERSONAL KNOWLEDGE OF THE SITE CONDITIONS AND
 THAT IT WAS PREPARED IN ACCORDANCE WITH THE REQUIREMENTS
 OF THE HOWARD SOIL CONSERVATION DISTRICT.
Arthur C. Moaday 9/8/75
 PROFESSIONAL ENGINEER DATE



I CERTIFY THAT ALL THE DEVELOPMENT AND / OR CONSTRUCTION WILL
 BE DONE ACCORDING TO THIS PLAN OF DEVELOPMENT AND PLAN FOR EROSION
 AND SEDIMENT CONTROL, AND I ALSO AUTHORIZE PERIODIC ON - SITE
 INSPECTION BY THE HOWARD SOIL CONSERVATION DISTRICT OR THEIR
 AUTHORIZED AGENTS, AS ARE DEEMED NECESSARY. DEVIATION FROM THIS
 PLAN WILL NOT BE MADE UNLESS AUTHORIZED BY THE HOWARD SOIL
 CONSERVATION DISTRICT.
Arthur C. Moaday 9/8/75
 DATE



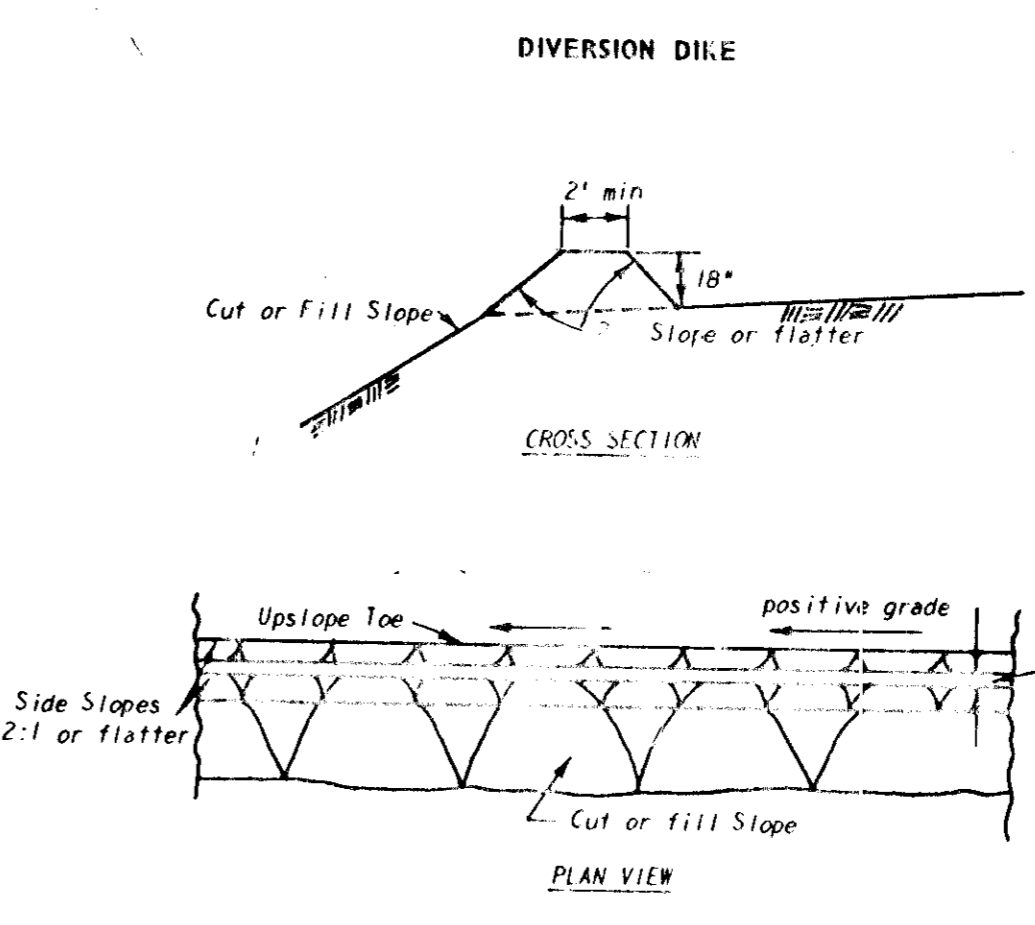
ENTRANCE DETAIL



CLEARING and GRADING: ARTICLE C-1
 SUBGRADE: ARTICLE C-2
 BASE COURSE: ARTICLE C-25
 BINDER COURSE: ARTICLE C-31 or C-33
 SURFACE COURSE: ARTICLE C-31
 TO BE CONSTRUCTED IN ACCORDANCE WITH THE HOWARD
 COUNTY ROAD CONSTRUCTION CODE AND SPECIFICATIONS.

TRUCK AREA PAVING
 DETAIL
 NO SCALE

- PAVING SPECIFICATION
- 1) BASE WILL BE PRIMED IN ACCORDANCE WITH SECTION C-31-3 AS PROVIDED IN THE HOWARD COUNTY ROAD CONSTRUCTION CODE AND STANDARD SPECIFICATIONS.
 - 2) TACK COAT IS REQUIRED IN ACCORDANCE WITH SECTION C-31-4 OF THE HOWARD COUNTY ROAD CONSTRUCTION CODE AND STANDARD SPECIFICATIONS.



APPROVED: FOR PUBLIC WATER AND PUBLIC SEWERAGE SYSTEMS.
 HOWARD COUNTY HEALTH DEPARTMENT
John A. ... 12/5/75
 COUNTY HEALTH OFFICER DATE
 APPROVED: HOWARD COUNTY OFFICE OF PLANNING & ZONING.
John A. ... 12/5/75
 PLANNING DIRECTOR DATE
 CHIEF DIVISION OF LAND DEVELOPMENT & TRANSPORTATION PLANNING
John A. ... 12/5/75
 DIRECTOR DATE
 APPROVED: FOR PUBLIC WATER AND PUBLIC SEWERAGE AND STORM DRAINAGE SYSTEMS AND ROADS.
John A. ... 12/5/75
 CHIEF, BUREAU OF HIGHWAYS DATE

- SITE ANALYSIS:
- 1) TAX MAP NUMBER - 42
 - 2) PARCEL NUMBER - PARCEL A
 - 3) TOTAL AREA OF SITE - 10.381 AC.
 - 4) PRESENT ZONING - RT (INDUSTRIAL)
 - 5) TOTAL NUMBER OF EMPLOYEES - 137
 - 6) TOTAL FLOOR SPACE - 153,000 SQ. FT.
 - 7) SUBDIVISION PLAT REFERENCE - E.G.U. SUBDIVISION SEC. 2, AREA 6 (25/38)
 - 8) PARKING REQUIRED - 66 PROVIDED - 229
 - 9) FINAL DEVELOPMENT PLAN PHASE 142, PLAT BOOK 20 FOLIOS 259 to 261

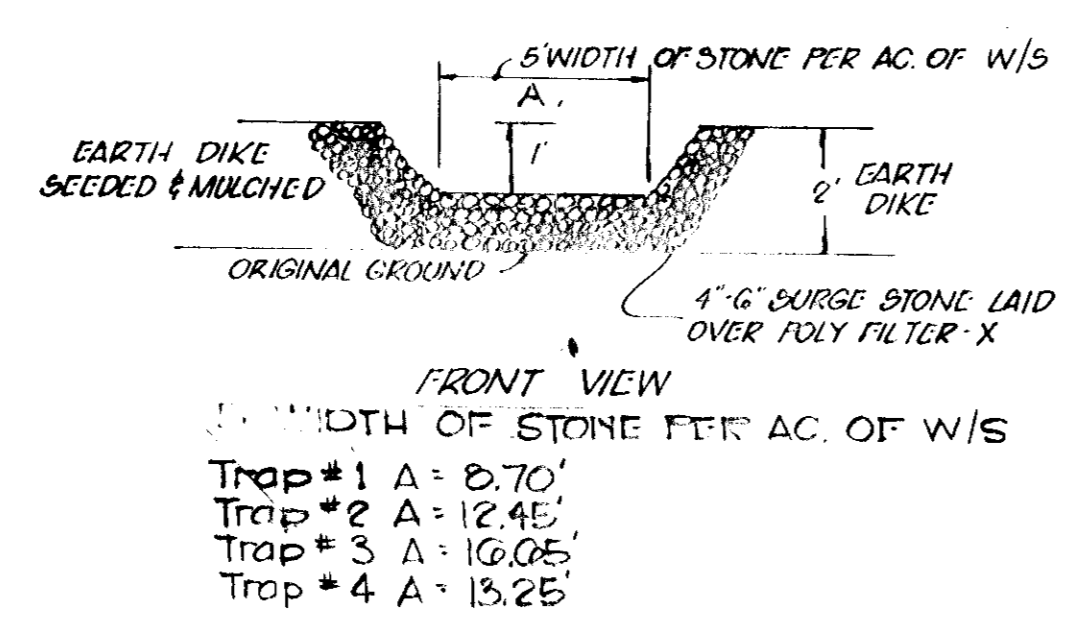
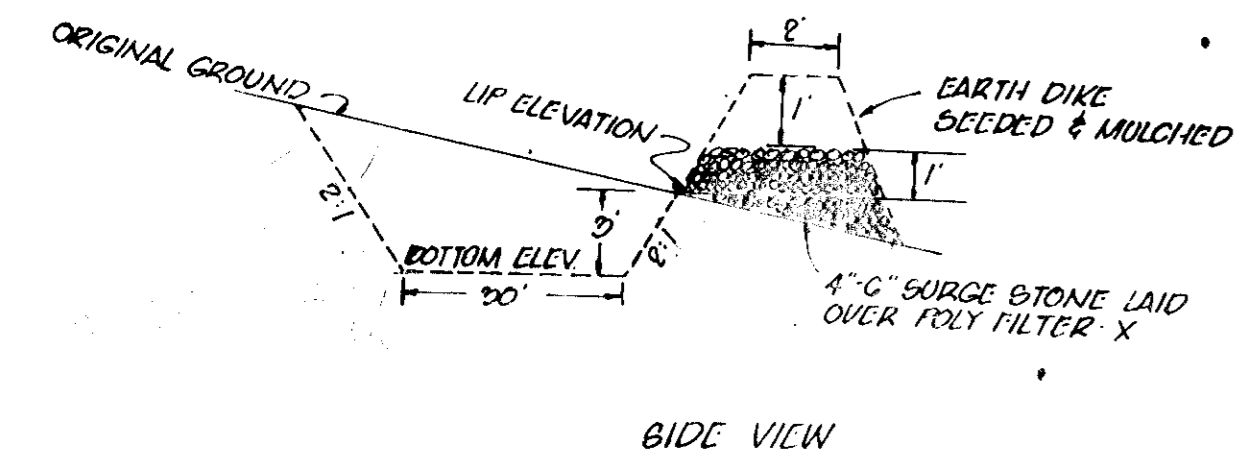
BITUMINOUS CONCRETE SURFACE	BAND C-3	1"
BITUMINOUS CONCRETE BASE	BAND C-2 OR C-3	4"

CLEARING & GRADING SUBGRADE BASE COURSE SURFACE
 ARTICLE C-1
 ARTICLE C-2
 ARTICLE C-31 OR C-33
 ARTICLE C-31

TO BE CONSTRUCTED IN ACCORDANCE WITH THE HOWARD COUNTY ROAD CONSTRUCTION CODE AND SPECIFICATIONS.
 DRWG. D-117, PG 165g

PARKING LOT DETAIL
 NO SCALE

- General Notes:
1. All drawings Not to Scale.
 2. All dikes must be machine compacted.
 3. All diversion dikes must have positive grade draining to a stabilized outlet.
 4. Diverted runoff will outlet onto a stabilized undisturbed area, a prepared level spreader, or into a grade stabilization structure.
 5. Periodic inspection and required maintenance must be provided.



- WIDTH OF STONE PER AC. OF W/S
- Trap # 1 A = 2.70'
 - Trap # 2 A = 12.45'
 - Trap # 3 A = 16.05'
 - Trap # 4 A = 13.25'

TITLE	DETAIL SHEET	REVISIONS	APPROVED 5/11/78 JIC	ENGINEERING PLANNING SURVEYING BY
PROJECT	E.G.U. SUBDIVISION - SECTION 2, AREA 6 - PARCEL A	BY		BOENDER ASSOCIATES INC.
LOCATION	6TH ELECTION DISTRICT - HOWARD COUNTY, MARYLAND	DATE	JULY 1973	ELLIOTT CITY, MD. 21043
SCALE	AS SHOWN	DES. BY		SALISBURY, MD. 21801
		DRAWN BY	DR	301-465-7777
		CHKD BY		
		JOB NO.	7379	
		DRWG. NO.	8 OF 8	