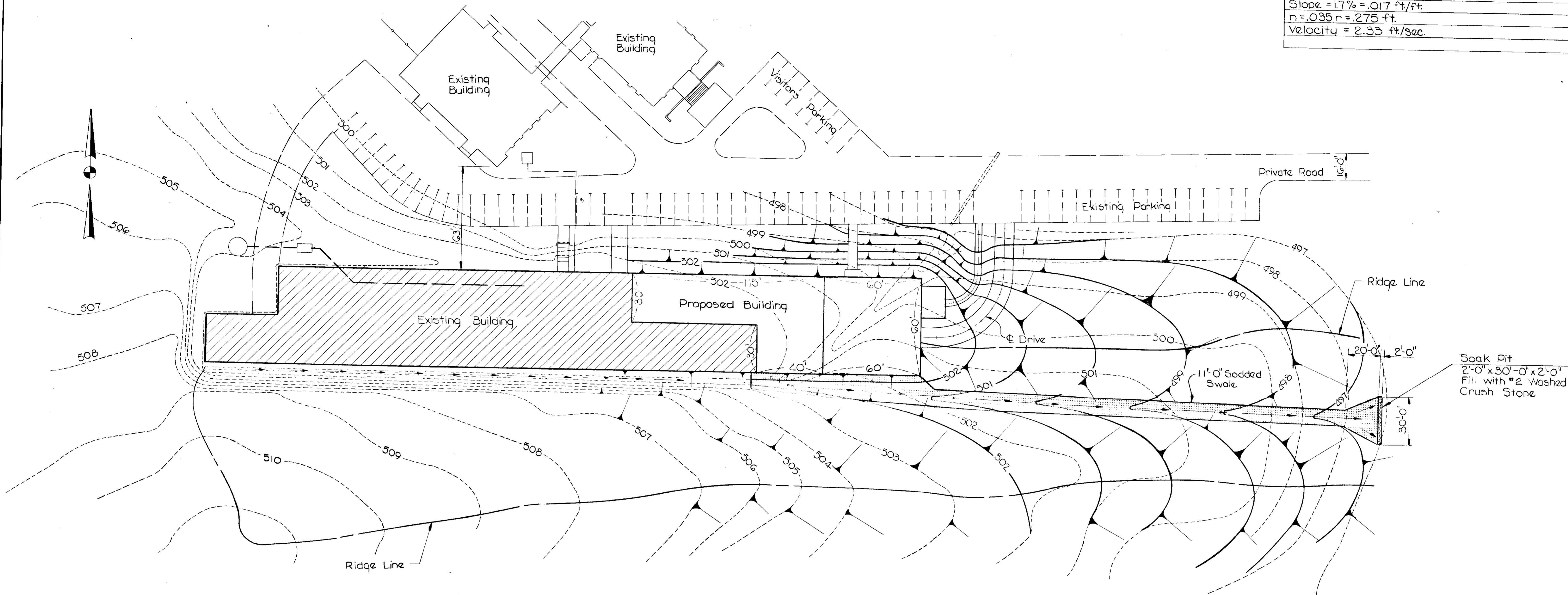


DRAINAGE DATA

Contributing Roof Area = 24960 SF	C = 1.0
Contributing Lawn Area = 61740 SF	C = .40
Gross Contributing Area = 86700 S.F. = 1.99 Acres	C = .57
10 Year Design Storm	
Time of Concentration = 5 min.	
Intensity = 7 7/8 in.	
Q = 704 C.F.S.	
Slope = 1.7% = .017 ft/ft.	
n = .035 r = 2.75 ft.	
Velocity = 2.33 ft/Sec	



DRAINAGE PLAN
Scale 1" = 30'-0"

Note:
Sodded Swale Section
See Sheet S-1

APPROVED FOR PRIVATE WATER AND PRIVATE SEWERAGE SYSTEMS, HOWARD COUNTY HEALTH DEPARTMENT
 COUNTY HEALTH OFFICER *[Signature]* DATE 7/23/75

APPROVED HOWARD COUNTY OFFICE OF PLANNING AND ZONING
 PLANNING DIRECTOR *[Signature]* DATE 8/7/75
 CHIEF, DIVISION OF LAND DEVELOPMENT AND TRANSPORTATION PLANNING *[Signature]* DATE 8/1/75

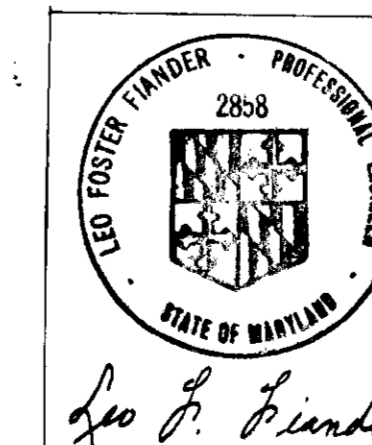
APPROVED FOR STORM DRAINAGE SYSTEMS AND ROADS
 HOWARD COUNTY DEPARTMENT OF PUBLIC WORKS
 DIRECTOR *[Signature]* DATE 8-6-75
 CHIEF, BUREAU OF HIGHWAYS *[Signature]* DATE 8-6-75

Reviewed for HOWARD S.C.D. (Name)
 and meets Technical Requirements
 Signature *[Signature]* Date 7/23/75
 U.S. Soil Conservation Service

THIS DEVELOPMENT PLAN IS APPROVED FOR SOIL EROSION AND SEDIMENT CONTROL BY THE HOWARD SOIL CONSERVATION DISTRICT

Approved *[Signature]* Date 7-23-75
 Howard S.C.D.

APPROVED
 DIVISION OF LAND DEVELOPMENT AND TRANSPORTATION
 DATE 7/15/75
[Signature]



KNOERLE, BENDER, STONE AND ASSOCIATES INC.
 CONSULTING ENGINEERS
 BALTIMORE, MARYLAND

TOWING TANK BUILDING ADDITION
 HYDRONAUTICS, INC.
 7210 PINDELL SCHOOL RD.
 HOWARD COUNTY, MARYLAND

DRAWING NO.
 S-2
 Sheet 2 of 2
 DATE June 18, 1975
 DESIGN
 DRAWN BY SLA