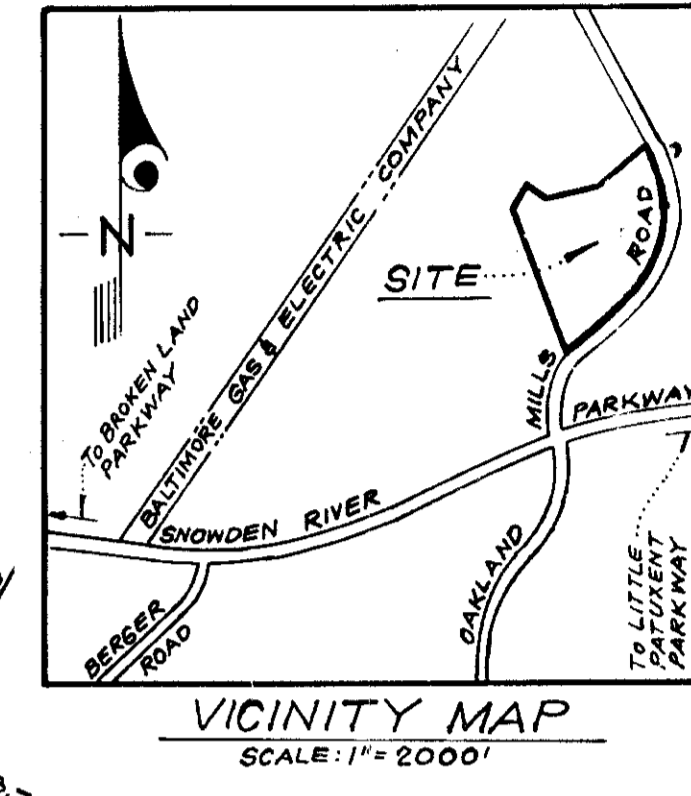
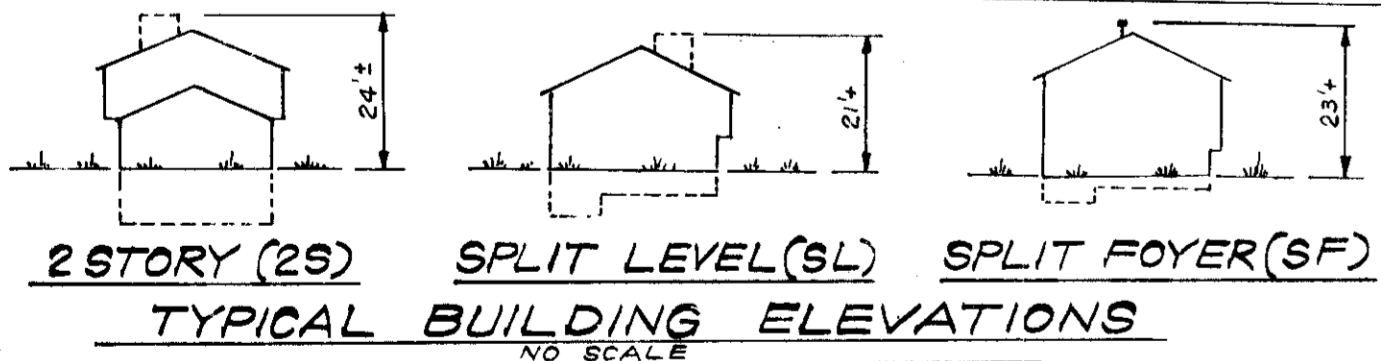
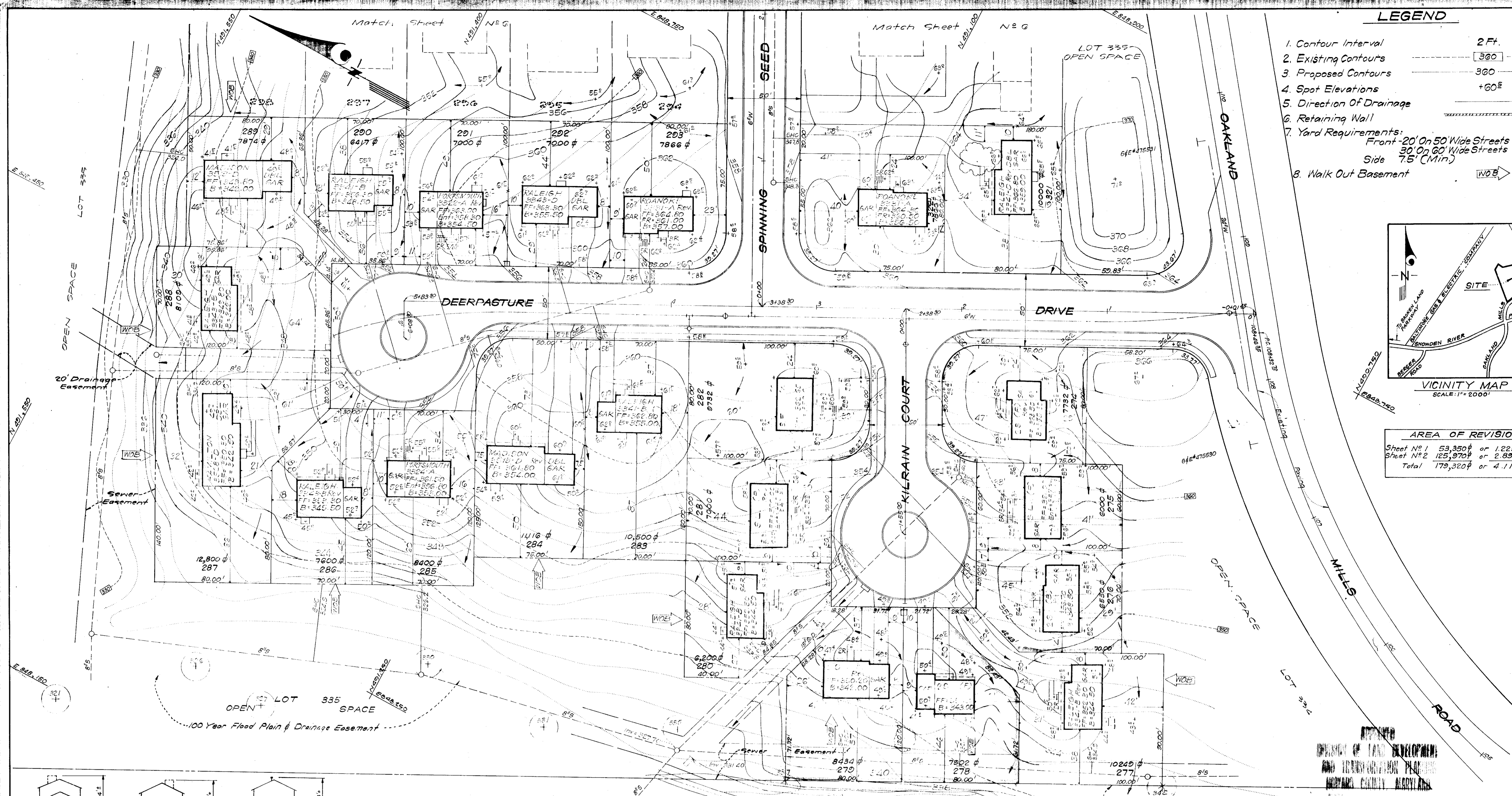


LEGEND

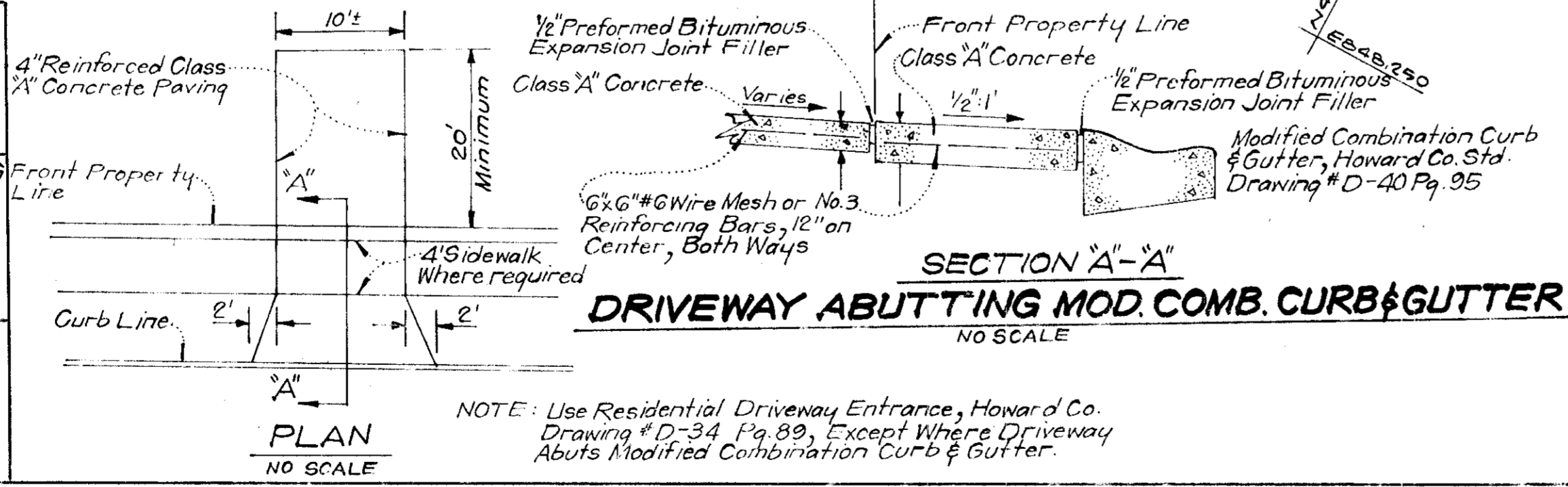
1. Contour Interval 2 Ft.
2. Existing Contours 360
3. Proposed Contours 360
4. Spot Elevations +60'
5. Direction Of Drainage
6. Retaining Wall
7. Yard Requirements:
 - Front - 20' On 50' Wide Streets
 - 30' On 60' Wide Streets
 - Side 7.5' (Min)
8. Walk Out Basement



AREA OF REVISIONS
 Sheet No. 1 53,350# or 1.225 Ac.
 Sheet No. 2 125,970# or 2.892 Ac.
 Total 179,320# or 4.117 Ac.



APPROVED: FOR PUBLIC WATER AND PUBLIC SEWERAGE SYSTEMS, HOWARD COUNTY HEALTH DEPARTMENT
 COUNTY HEALTH OFFICER _____ DATE _____
 APPROVED: HOWARD COUNTY OFFICE OF PLANNING & ZONING & TRANSPORTATION PLANNING
 PLANNING DIRECTOR _____ DATE _____
 CHIEF DIVISION OF LAND DEVELOPMENT & TRANSPORTATION PLANNING
 APPROVED: FOR PUBLIC WATER AND PUBLIC SEWERAGE, STORM DRAINAGE SYSTEMS AND PUBLIC ROADS, HOWARD COUNTY DEPARTMENT OF PUBLIC WORKS
 DIRECTOR _____ DATE _____
 CHIEF BUREAU OF HIGHWAYS



SURVEYOR'S CERTIFICATION
 I hereby certify that the information contained hereon is the same as that shown previously approved S.D.P. # 74-40C, with the following exceptions:

1. House types and grading have been revised on Lots 274-276, 278, 279, 281 and 282.
- I further certify that the Sediment and Erosion Control measures, as previously approved on S.D.P. # 74-40C will not be effected; the grading remains substantially the same as originally planned; the building setbacks comply with those established in F.D.P. Phase 118 Part III; and the Lot configurations are geometrically the same as shown on the respective recorded subdivision plat.

4/18/75
 DATE

 Donald B. Sackett
 Registered Land Surveyor
 Md. No. 6059

- NOTES:
1. For bearings and distances of individual lot lines, see record plat recorded in Plat Book 25, Folio 25
 2. For Houses not effected by these revisions, see S.D.P. # 74-40C, sheet 5 of 6.

CLARK • FINEPROCK & SACKETT
 ENGINEERS • PLANNERS • SURVEYORS
 11315 LICKWOOD DRIVE SILVER SPRING, MARYLAND 20904 (301) 573-3400

DESIGNED: D.B.S. **REVISED SITE DEVELOPMENT PLAN** SCALE: 1" = 30'
 DRAWN: K.W.C. LOTS 274-276, 278, 279, 281, 282, 285-288, 301, 302, 305, 306, 310-312, 315, 316, 318-320 DRAWING: 1 OF 2
 CHECKED: D.B.S. **COLUMBIA** VILLAGE OF OWEN BROWN SECTION 2 AREA 3 JOB NO.:
 6TH ELECTION DISTRICT HOWARD COUNTY, MARYLAND
 DATE: Mar., 1975 OWNER: RYLAND HOMES, COLUMBIA DIVISION FILE NO.: 1133-X
 Suite 200 V.O.M. Office Building Columbia, Maryland 21043

LEGEND

1. Contour Interval 2 Ft.
2. Existing Contours 360
3. Proposed Contours 360
4. Spot Elevations +60±
5. Direction Of Drainage →
6. Retaining Wall [Symbol]
7. Yard Requirements:
Front-20' On 50' Wide Streets
30' On 60' Wide Streets
Side 7.5' (Min.)
8. Walk Out Basement [Symbol]

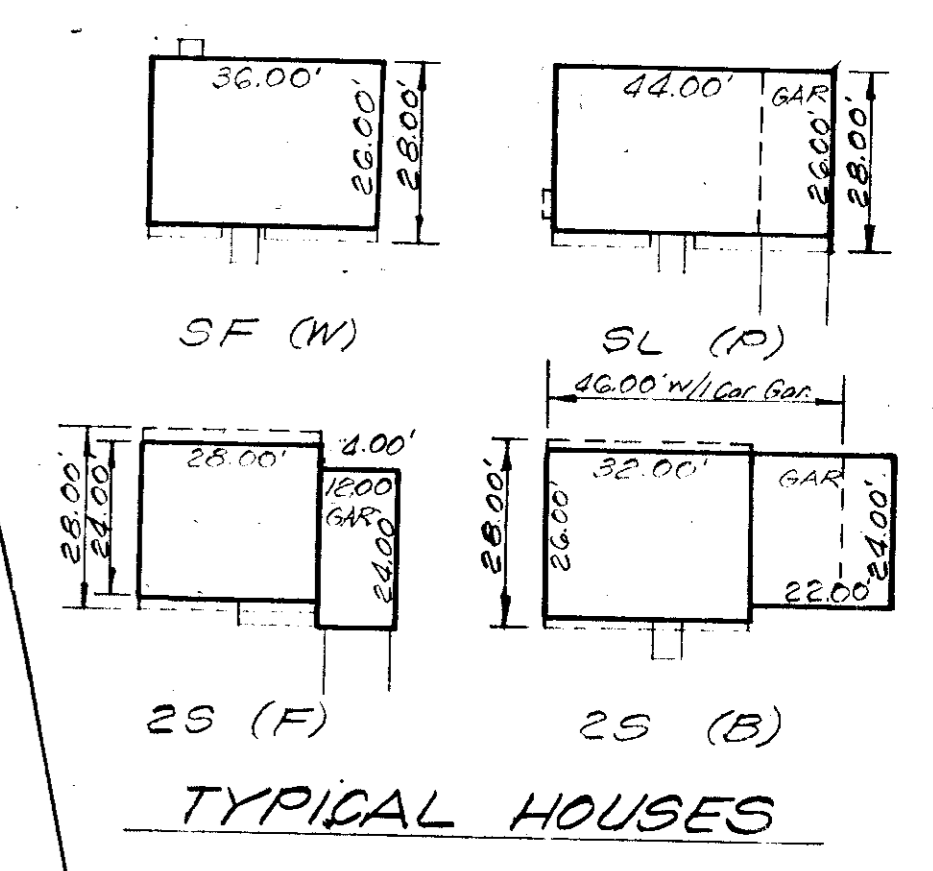
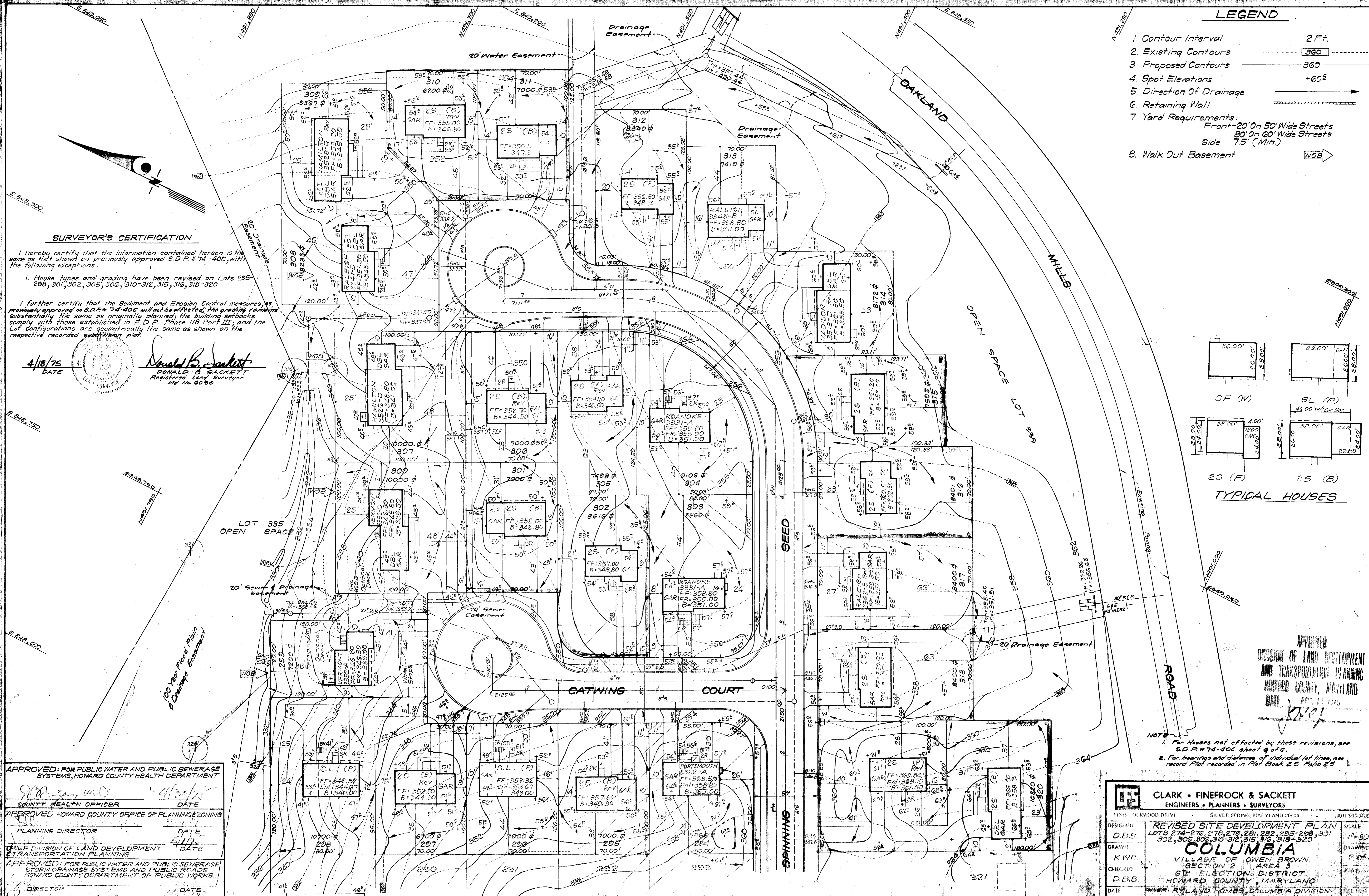
SURVEYOR'S CERTIFICATION

I hereby certify that the information contained hereon is the same as that shown on previously approved S.D.P. #74-40C, with the following exceptions:

1. House types and grading have been revised on Lots 295-298, 301, 302, 305, 306, 310-312, 315, 316, 318-320

I further certify that the Sediment and Erosion Control measures, as previously approved as S.D.P. #74-40C will not be affected; the grading remains substantially the same as originally planned; the building setbacks comply with those established in F.D.P. Phase 118 Part III; and the Lot configurations are geometrically the same as shown on the respective recorded subdivision plot.

4/18/75 DATE
 Donald B. Sackett
 DONALD B. SACKETT
 Registered Land Surveyor
 Md. No. 6059



APPROVED
 DIVISION OF LAND DEVELOPMENT
 AND TRANSPORTATION PLANNING
 HOWARD COUNTY, MARYLAND
 MAR 21 1975
 [Signature]

NOTE:
 1. For Houses not affected by these revisions, see S.D.P. #74-40C sheet 4 of 6.
 2. For bearings and distances of individual lot lines, see record Plat recorded in Plat Book 25 Folio 25

APPROVED: FOR PUBLIC WATER AND PUBLIC SEWERAGE SYSTEMS, HOWARD COUNTY HEALTH DEPARTMENT
 COUNTY HEALTH OFFICER [Signature] DATE 4/18/75
 APPROVED: HOWARD COUNTY OFFICE OF PLANNING & ZONING
 PLANNING DIRECTOR [Signature] DATE 4/18/75
 CHIEF DIVISION OF LAND DEVELOPMENT & TRANSPORTATION PLANNING
 APPROVED: FOR PUBLIC WATER AND PUBLIC SEWERAGE, STORM DRAINAGE SYSTEMS AND PUBLIC ROADS
 HOWARD COUNTY DEPARTMENT OF PUBLIC WORKS
 DIRECTOR [Signature] DATE 4/18/75
 CHIEF BUREAU OF HIGHWAYS [Signature] DATE 4/18/75

CLARK • FINEPROCK & SACKETT
 ENGINEERS • PLANNERS • SURVEYORS
 11315 LOCKWOOD DRIVE SILVER SPRING, MARYLAND 20904 (301) 563-3400

DESIGNED: REVISED SITE DEVELOPMENT PLAN SCALE 1"=30'
 D.B.S. LOTS 274-276, 270, 278, 281, 282, 295-298, 301, 302, 305, 306, 310-312, 315, 316, 318-320 DRAWING 2 of 2

DRAWN: COLUMBIA
 K.W.C. VILLAGE OF OWEN BROWN
 CHECKED: SECTION 2, AREA 3
 D.B.S. 6TH ELECTION DISTRICT
 HOWARD COUNTY, MARYLAND

DATE: MAR 19 1975
 PROJECT: RYLAND HOMES, COLUMBIA DIVISION
 8115 200 V.O.M. OFFICE BUILDING
 Columbia, Maryland 21045

Match Sheet NR 5

27 LOTS