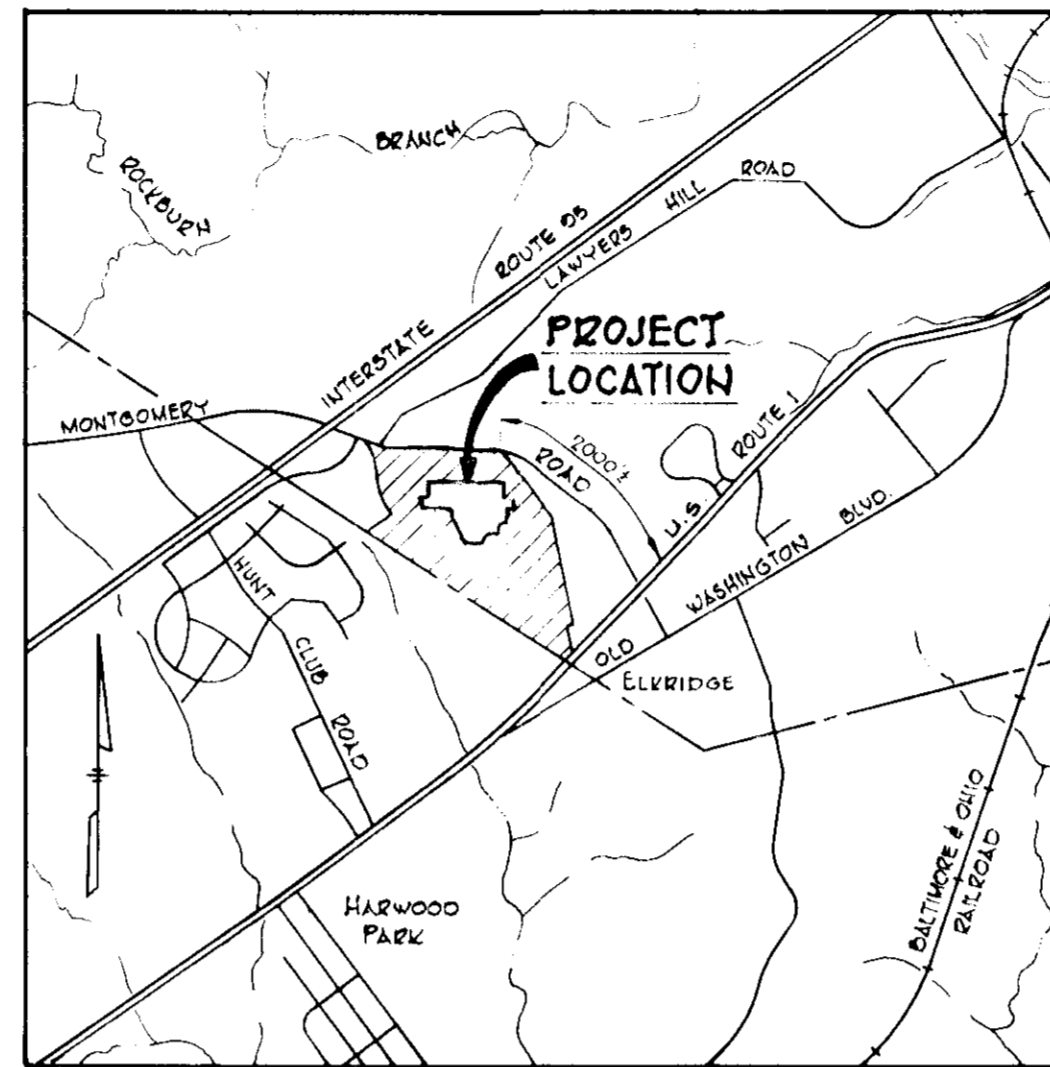


**GENERAL NOTES**

1. Topography obtained from field-run survey performed by DePT, McCune and Walker, Planners and Engineers, Towson, Maryland in 1973.
2. All interior roads and parking lots shall be privately owned.
3. Public water and sewerage systems will be used.
4. All construction materials and details shall be in accordance with the latest revisions of the Howard County Road Construction Code and Standard Specifications.
5. See Architectural drawings for building dimensions.
6. Interior road and parking lot paving shall be Howard County Standard D-13 consisting of 4" Bituminous Concrete Base and 1" Bituminous concrete surface course.
7. All curb or curb and gutter shall be Howard County Standard Detail No D-40.
8. This site plan to be done in accordance with Sections 7.04-7.05-7.06 of the Howard County Zoning Regulations.
9. Minimum building setback restrictions from property lines and the 2/40 Line of any public road or street to be in accordance with Howard County Zoning Regulations.
10. The Contractor shall notify the following utility companies a minimum of 3 days in advance of construction operations.  
Bell Telephone System 393-3649  
Long Distance Cable Division 393-3553  
Baltimore Gas and Electric Co. 330-8000
11. PARCEL RECORDED IN PLAT BOOK # 3407 & 3408

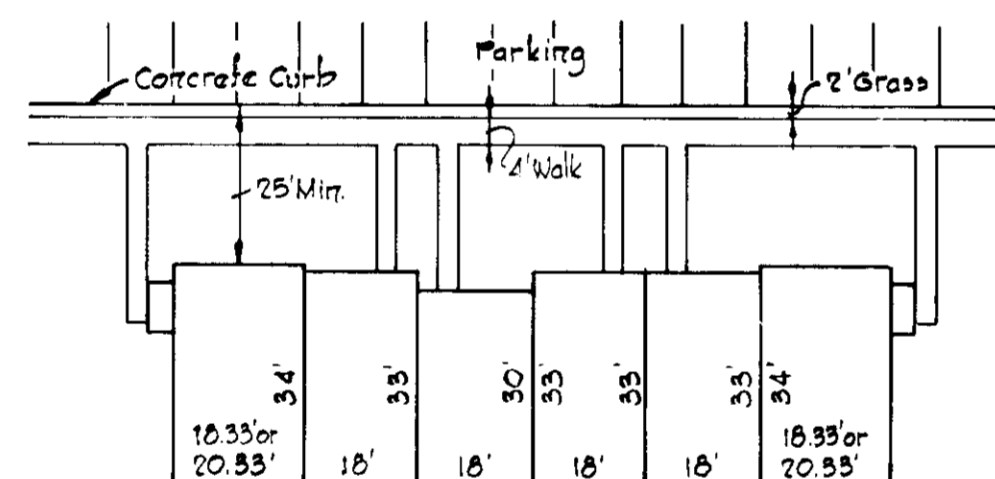


**VICINITY MAP**  
Scale: 1" = 2000'

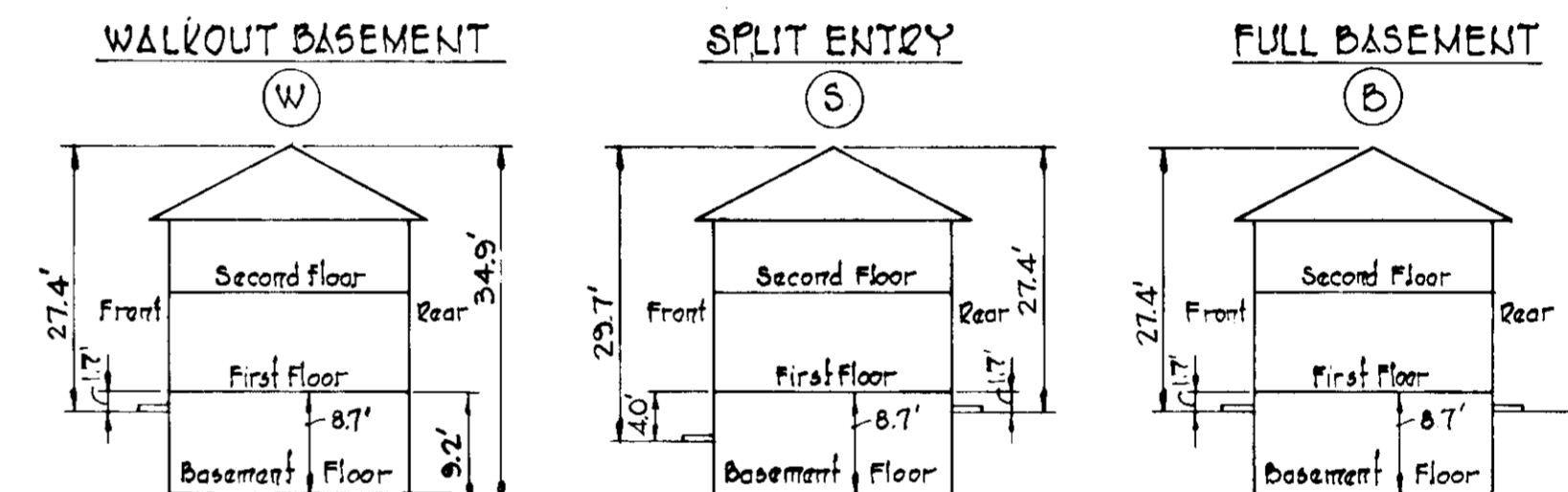
**ZONING DATA**

- |  |             |
|--|-------------|
| 1. Present Zoning - R2-1                 |             |
| 2. a) Total Acreage                      | 8,948 Ac.   |
| b) Area of Road Dedication               | 0 Ac.       |
| c) Net Area                              | 8,948 Ac.   |
| 3. Numbers of units allowed              | 139         |
| Numbers of units proposed                | 82 *        |
| 4. Building coverage allowed             | 20% of Lot  |
| Building coverage proposed               | 13%         |
| 5. Number of parking spaces required     | 123         |
| Number of parking spaces provided        | 158         |
| 6. Parking coverage allowed              | 50% of Yard |
| Parking coverage proposed                | 26%         |
| 7. All parking spaces shall be 10' x 20' |             |
- \* 8 - 2 Bedroom (1620<sup>sq</sup> Minimum)  
14 - 3 Bedroom (1725<sup>sq</sup> Minimum)

SHEET INDEX	
NO.	DESCRIPTION
1.	Title Sheet
2.	Grading Plan
3.	Grading Plan
4.	Road Profiles and Details
5.	Drainage Area Map
6.	Drainage Area Map
7.	Storm Drain Details
8.	Storm Drain Details



**TYPICAL GROUP**  
No Scale



**TYPICAL DWELLING ELEVATIONS**  
No Scale

**SITE PLANS  
MONTGOMERY WOODS  
SECTION ONE  
PARCEL "B"**

APPROVED FOR PUBLIC WATER AND PUBLIC SEWERAGE SYSTEMS, HOWARD COUNTY HEALTH DEPARTMENT  
*Spitznagel* 4/5/76  
COUNTY HEALTH OFFICER DATE

APPROVED HOWARD COUNTY OFFICE OF PLANNING AND ZONING  
*Thomas G. Harris* 4-6-76  
PLANNING DIRECTOR DATE

*William* 4/5/76  
CHIEF DIVISION OF LAND DEVELOPMENT AND TRANSPORTATION PLANNING DATE

APPROVED FOR PUBLIC WATER PUBLIC SEWER AND STORM DRAINAGE SYSTEMS AND ROADS, HOWARD COUNTY DEPARTMENT OF PUBLIC WORKS.  
*P. J. Regan* 3-29-76  
DIRECTOR DATE

*Francis W. Mahland* 3/24/76  
CHIEF BUREAU OF HIGHWAYS DATE

NOTE:  
The Soil Conservation Plan for this site is the same as that for SECTION ONE - PARCEL "A" SDP 75-28 and shall be adhered to as approved.

APPROVED  
PLANNING BOARD  
OF HOWARD COUNTY  
DATE 4-16-75  
*Thomas G. Harris*

KAUFMAN & BROAD HOMES, INC.  
OWNER  
10801 NATIONAL BLVD.  
LOS ANGELES, CALIFORNIA 90064

WHITMAN, REQUARDT & ASSOCIATES  
ENGINEERS  
304 ST PAUL STREET  
BALTIMORE, MARYLAND 21202  
*Francis W. Mahland*  
KENNETH A. McCORD - PE 1074

4	1/29/76	As per Planning Comments
3	2/6/75	As per DPW Comments
2	1/10/75	As per DPW Comments
1	12/1/74	As per Planning & DPW Comments
NO.	DATE	DESCRIPTION OF REVISION

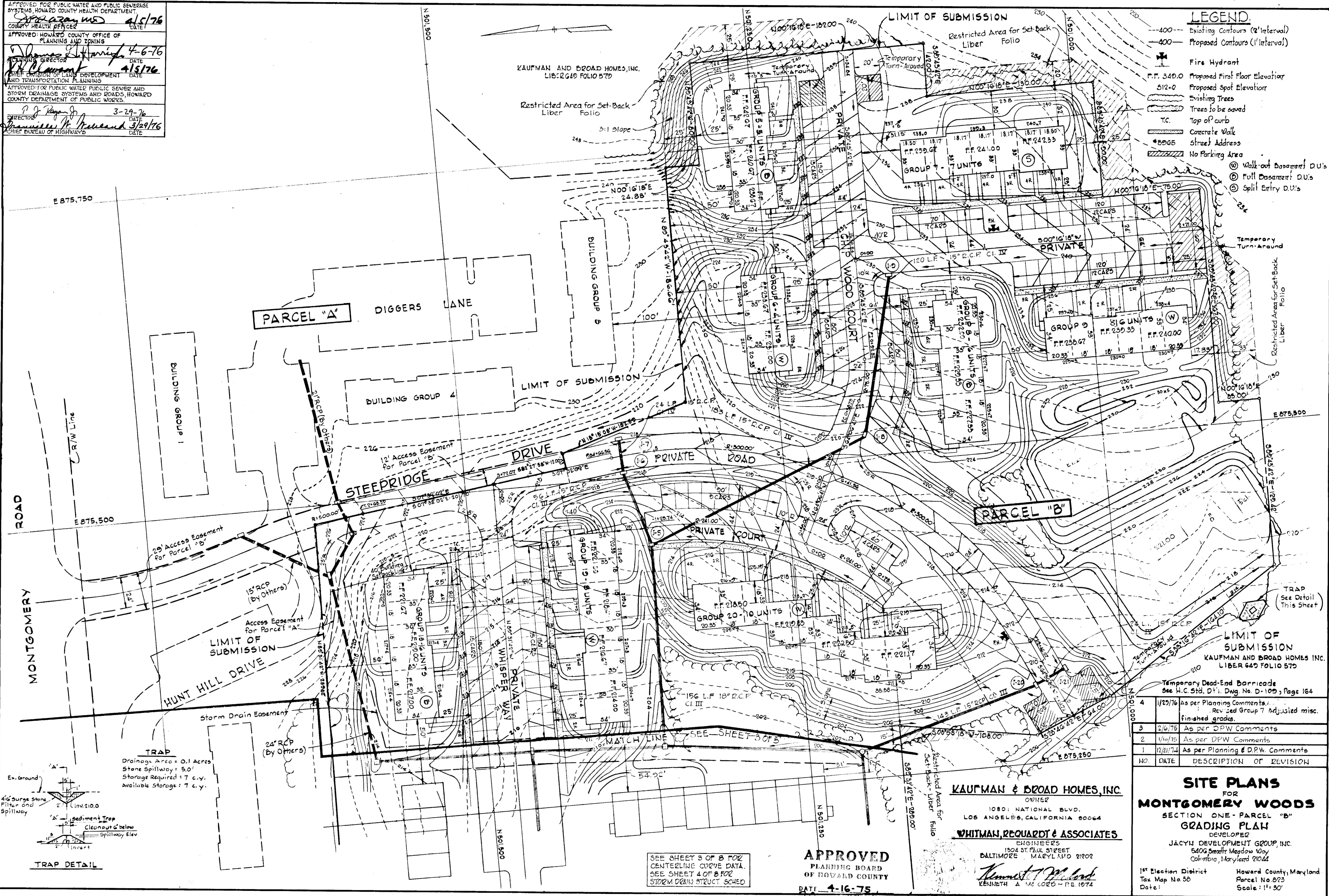
**SITE PLANS  
FOR  
MONTGOMERY WOODS  
SECTION ONE - PARCEL "B"  
TITLE SHEET**

DEVELOPER  
JACYN DEVELOPMENT GROUP, INC.  
5406 Smooth Meadow Way  
Columbia, Maryland 21044

15<sup>th</sup> Election District  
Tax Map No. 38  
Date:  
Howard County, Maryland  
Parcel No. 825  
Scale: As Shown

APPROVED FOR PUBLIC WATER AND PUBLIC SEWERAGE SYSTEMS, HOWARD COUNTY HEALTH DEPARTMENT.  
 APPROVED FOR HOWARD COUNTY OFFICE OF PLANNING AND ZONING.  
 APPROVED FOR PUBLIC WATER, PUBLIC SEWER AND STORM DRAINAGE SYSTEMS AND ROADS, HOWARD COUNTY DEPARTMENT OF PUBLIC WORKS.

- LEGEND**
- - - - - Existing Contours (2' Interval)
  - — — — Proposed Contours (1' Interval)
  - ⊕ Fire Hydrant
  - F.F. 349.0 Proposed First Floor Elevation
  - S12.0 Proposed Spot Elevation
  - Existing Trees
  - Trees to be saved
  - T.C. Top of curb
  - Concrete Walk
  - \*8065 Street Address
  - No Parking Area
  - ⊙ Walk-out Basement D.U.'s
  - ⊙ Full Basement D.U.'s
  - ⊙ Split Entry D.U.'s



NO.	DATE	DESCRIPTION OF REVISION
4	1/29/76	As per Planning Comments. Revised Group 7 Adjusted misc. finished grades.
3	2/6/76	As per DPW Comments
2	1/16/76	As per DPW Comments
1	12/21/74	As per Planning & D.P.W. Comments

**SITE PLANS**  
 FOR  
**MONTGOMERY WOODS**  
 SECTION ONE - PARCEL "B"  
**GRADING PLAN**  
 DEVELOPER  
 JACYN DEVELOPMENT GROUP, INC.  
 5406 Smoother Meadows Way  
 Columbia, Maryland 21044

1st Election District  
 Tax Map No. 58  
 Date: \_\_\_\_\_

Howard County, Maryland  
 Parcel No. 023  
 Scale: 1" = 30'

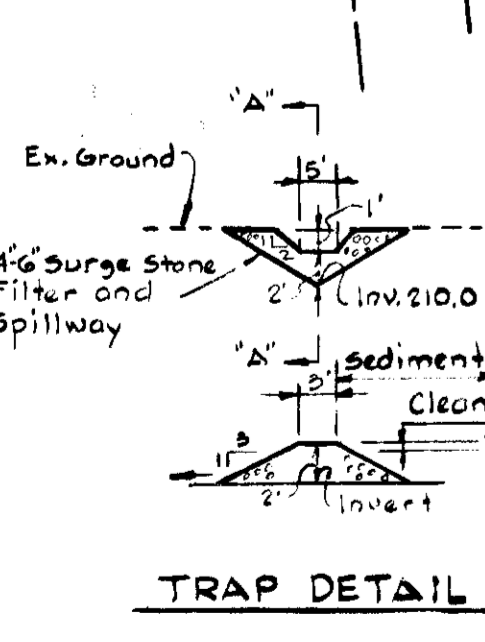
**KAUFMAN & BROAD HOMES, INC.**  
 OWNER  
 10801 NATIONAL BLVD.  
 LOS ANGELES, CALIFORNIA 90064

**WHITMAN, REQUARDT & ASSOCIATES**  
 ENGINEERS  
 1304 ST. PAUL STREET  
 BALTIMORE, MARYLAND 21202

*Kenneth A. McLeod*  
 KENNETH A. MCLEOD - P.E. 1974

**APPROVED**  
 PLANNING BOARD  
 OF HOWARD COUNTY  
 DATE 4-16-75

SEE SHEET 3 OF 8 FOR CENTERLINE CURVE DATA.  
 SEE SHEET 4 OF 8 FOR STORM DRAIN STRUCT. SCHED.



**TRAP**  
 Drainage Area = 0.1 Acres  
 Stone Spillway = 5.0'  
 Storage Required = 7 c.y.  
 Available Storage = 7 c.y.



CURVE DATA							
NO.	RADIUS	Δ	ARC	TAN	CHORD	L.C. @	
STEEPRIDGE DRIVE							
P.C. 0+26.70	P.T. 1+49.56	350.00'	18°28'30"	112.86'	56.92'	112.37'	501°06'27"E
P.C. 1+72.78	P.T. 2+12.75	500.00'	04°48'46"	42.00'	21.01'	41.99'	516°05'15"E
P.T. 2+14.75	P.T. 2+68.39	500.00'	03°05'48"	53.64'	26.85'	53.42'	510°26'30"E
P.C. 4+66.55	P.T. 8+26.32	300.00'	72°28'54"	379.51'	219.90'	352.71'	53°51'23"W

COURT # 4							
P.T. 0+00	-END 0+74.50	241.00'	17°39'52"	74.30'	37.45'	74.01'	542°52'13"W
P.T. 0+00	-END 1+25.74	241.00'	29°53'36"	125.74'	64.34'	124.32'	519°05'23"W

COURT # 5							
P.C. 0+58.79	P.T. 0+72.32	75.00'	25°37'05"	33.53'	17.05'	33.26'	568°46'18"E

- LEGEND**
- 400--- Existing Contours (2' Interval)
  - 400— Proposed Contours (1' Interval)
  - F.F. 840.0 Proposed First Floor Elevation
  - 512.0 Proposed Spot Elevation
  - Existing Trees
  - Trees to be saved
  - T.C. Top of curb
  - Concrete Walk
  - # 8965 Street Address
  - No Parking Area
  - Walk-Out Basement D.U.'s
  - Full Basement D.U.'s
  - Split Entry D.U.'s
  - Railroad Tie Wall
  - Fire Hydrant

APPROVED FOR PUBLIC WATER AND PUBLIC SEWERAGE SYSTEMS, HOWARD COUNTY HEALTH DEPARTMENT  
*Christopher M. S.* 4/5/76  
 COUNTY HEALTH OFFICER DATE

APPROVED, HOWARD COUNTY OFFICE OF PLANNING AND ZONING  
*Thomas A. Hamill* 4-6-76  
 PLANNING DIRECTOR DATE

CHIEF DIVISION OF LAND DEVELOPMENT AND TRANSPORTATION PLANNING  
*John Clumack* 4/5/76  
 DATE

APPROVED FOR PUBLIC WATER PUBLIC SEWER AND STORM DRAINAGE SYSTEMS AND ROADS, HOWARD COUNTY DEPARTMENT OF PUBLIC WORKS.  
*A. J. Ragan Jr.* 3-29-76  
 DIRECTOR DATE

*Drayville M. McLeod* 3/29/76  
 CHIEF BUREAU OF HIGHWAYS DATE

**APPROVED**  
 PLANNING BOARD  
 OF HOWARD COUNTY  
 DATE 4-16-75  
*Thomas A. Hamill*

**KAUFMAN & BROAD HOMES, INC.**  
 OWNER  
 10801 NATIONAL BLVD.  
 LOS ANGELES, CALIFORNIA 90064

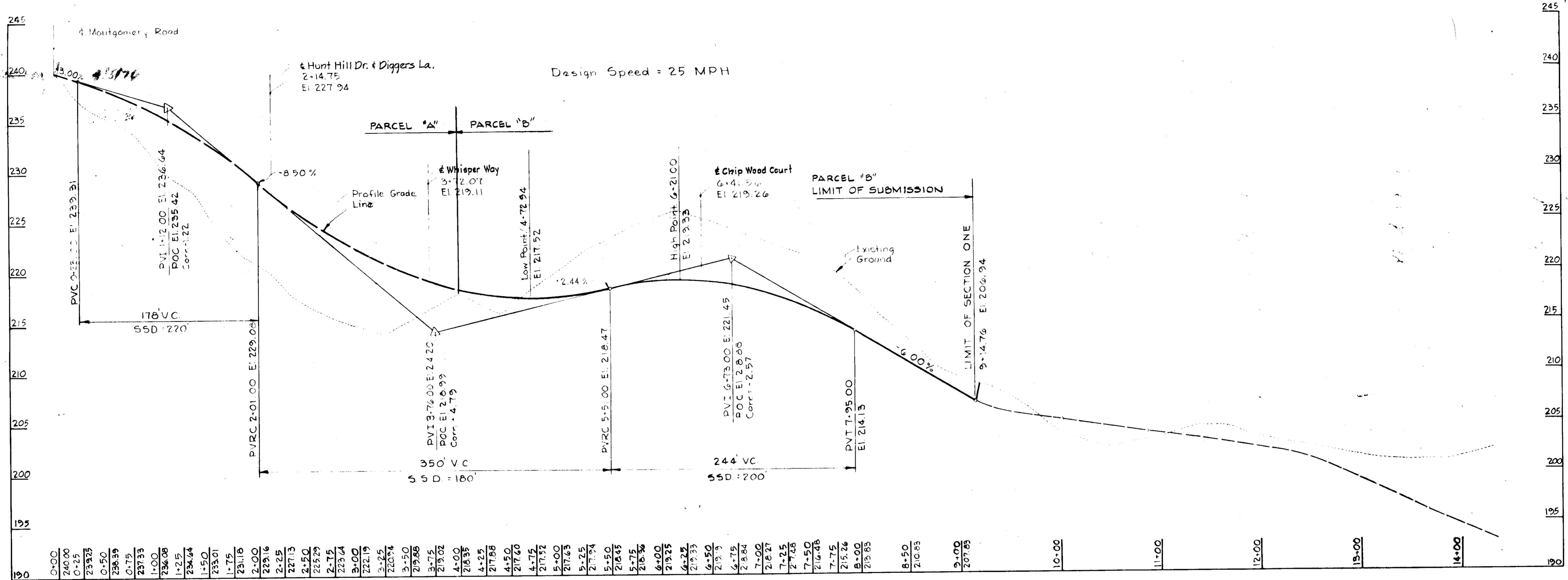
**WHITMAN, REQUAZOT & ASSOCIATES**  
 ENGINEERS  
 1504 ST. PAUL STREET  
 BALTIMORE, MARYLAND 21202  
*Kenneth A. McCord*  
 KENNETH A. MCCORD - PE 1974

4	1/22/76	As per Planning Comments. Adjusted misc. finished Grades.
3	2/6/75	As per DPW Comments
2	1/10/75	As per DPW Comments
1	4/21/74	As per Planning & DPW Comments
NO.	DATE	DESCRIPTION OF REVISION

**SITE PLANS**  
 FOR  
**MONTGOMERY WOODS**  
 SECTION ONE - PARCEL "B"  
**GRADING PLAN**  
 DEVELOPER  
 JACYN DEVELOPMENT GROUP, INC.  
 5406 Smooth Meadows Way  
 Columbia, Maryland 21044

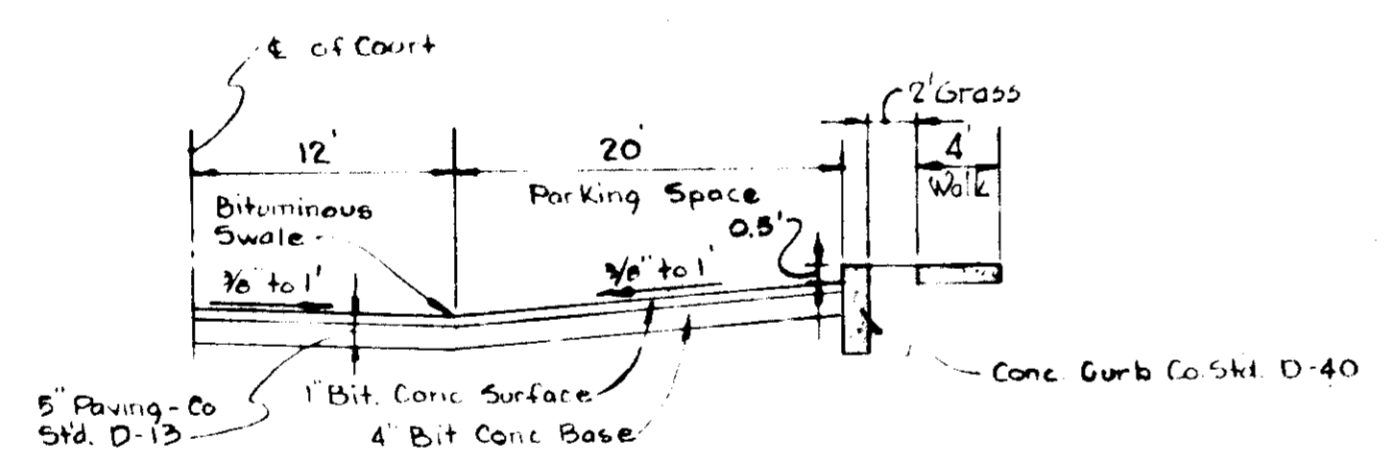
1<sup>st</sup> Election District  
 Tax Map No. 83  
 Date:

Howard County, Maryland  
 Parcel No. 023  
 Scale: 1" = 30'

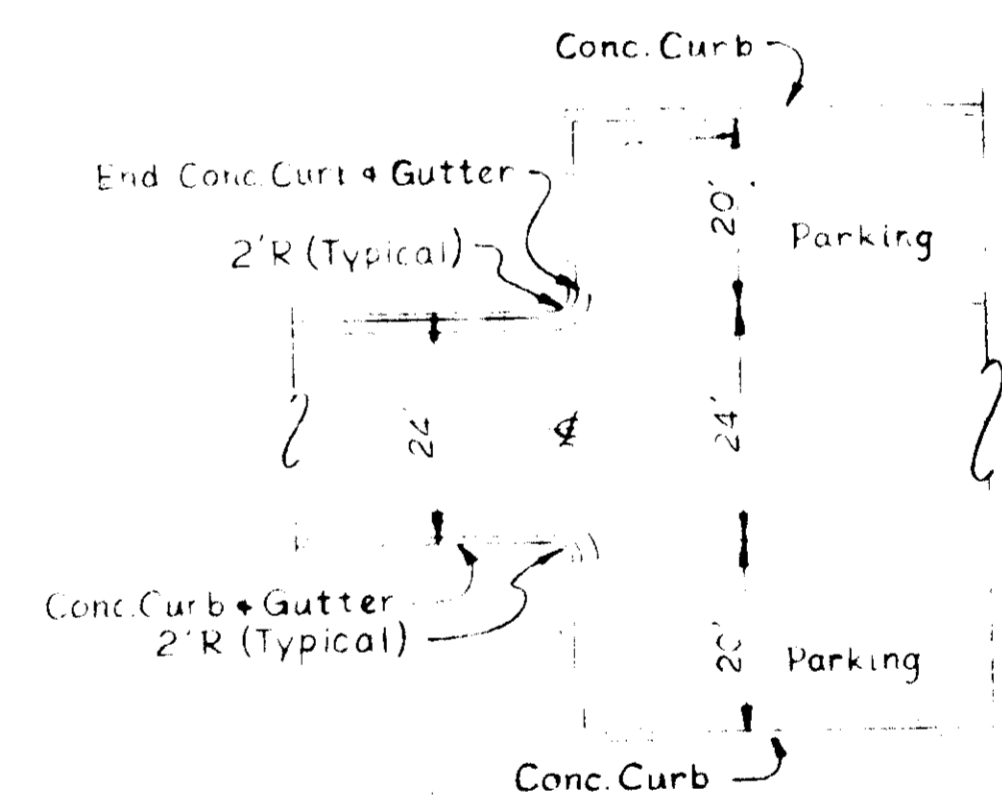


**PROFILE - STEEPRIDGE DRIVE**

Scale: Hor: 1"=50'  
Vert: 1"=5'

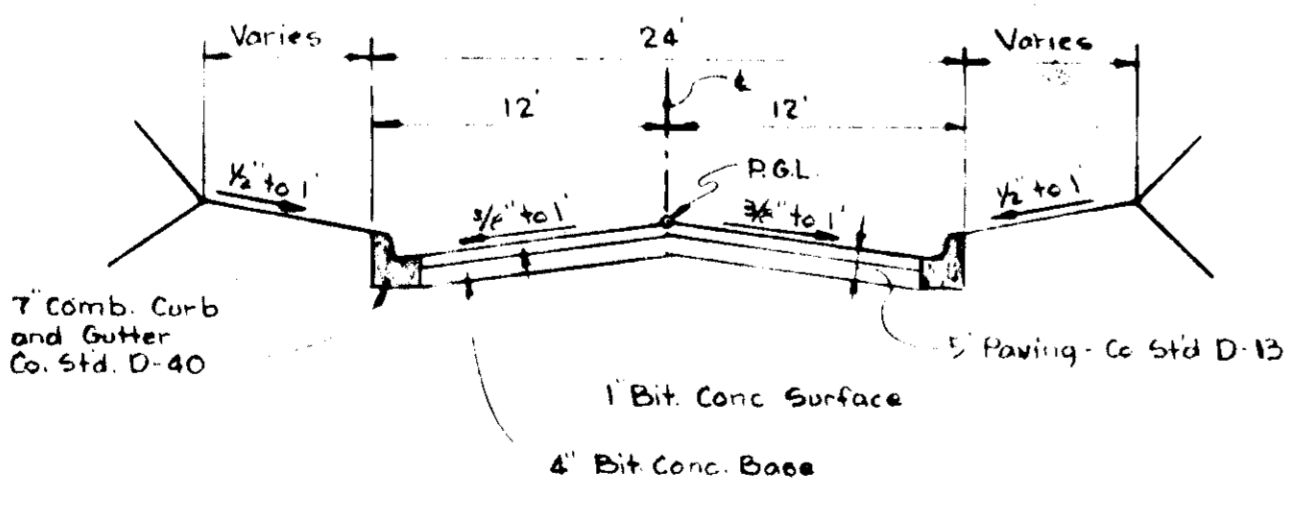


**TYPICAL SECTION - PRIVATE PARKING COURTS**  
No Scale



**PRIVATE ROAD AND PARKING AREA DETAIL**  
NO SCALE

STORM DRAIN STRUCTURE SCHEDULE				
NO.	TYPE	TOP ELEV.	INV. ELEV.	LOCATION
I-1	Spec. Mod. C Inlet	189.5	189.81	See Plan & Profile
I-2	Spec. Mod. C Inlet	192.0	185.62	See Plan & Profile
I-3	A-5 Inlet	198.5	192.95	30.00' Rt. & Sta. 1+23.14
I-4	Modified C Inlet	200.2	194.94	See Plan & Profile
I-5	A-5 Inlet	210.2	200.80	13.25' Lt. & Sta. 1+23.04
I-6	A-5 Inlet	217.6	212.23	13.25' Rt. & Sta. 4+73
I-7	A-5 Inlet	217.2	212.56	13.25' Lt. & Sta. 4+73
I-8	A-10 Inlet	220.7	214.19	13.25' Rt. & Sta. 0+57
I-9	A-5 Inlet	230.2	221.86	13.25' Rt. & Sta. 0+25
I-10	A-10 Inlet	210.0	197.41	13.25' Lt. & Sta. 2+10
I-11	A-5 Inlet	206.5	199.22	13.25' Lt. & Sta. 2+15
I-12	A-10 Inlet	206.0	200.24	13.25' Lt. & Sta. 0+09
I-20	A-5 Inlet	209.3	209.50	13.25' Rt. & Sta. 8+78.56
I-21	A-10 Inlet	209.3	199.89	13.25' Lt. & Sta. 8+78.56
M-1	Std. Manhole	202.0	191.66	See Plan & Profile
S-1	Conc. End Sect.	-	189.43	See Plan & Profile



**TYPICAL SECTION - PRIVATE ROAD**  
STEEPRIDGE DRIVE  
No Scale

APPROVED FOR PUBLIC WORKS AND PUBLIC SEWERAGE SYSTEMS HOWARD COUNTY HEALTH DEPARTMENT  
**Thomas J. Hamrick** 4/5/76  
 COUNTY HEALTH OFFICER DATE  
 APPROVED: HOWARD COUNTY OFFICE OF PLANNING AND ZONING  
**Thomas J. Hamrick** 4-6-76  
 PLANNING DIRECTOR DATE  
**William H. McLeod** 3/24/76  
 CHIEF DIVISION OF LAND DEVELOPMENT AND TRANSPORTATION PLANNING  
 APPROVED FOR PUBLIC WATER, PUBLIC SEWER AND STORM DRAINAGE SYSTEMS AND ROADS, HOWARD COUNTY DEPARTMENT OF PUBLIC WORKS.  
**William H. McLeod** 3-29-76  
 DIRECTOR DATE  
**William H. McLeod** 3/24/76  
 CHIEF, BUREAU OF HIGHWAYS DATE

**APPROVED**  
 PLANNING BOARD OF HOWARD COUNTY  
 DATE: 4-16-75  
**Thomas J. Hamrick**  
 OWNER  
**KAUFMAN & BROAD HOMES, INC.**  
 10801 NATIONAL BLVD.  
 LOS ANGELES, CALIFORNIA 90064  
**WHITMAN, REQUARDT & ASSOCIATES**  
 ENGINEERS  
 1504 ST. PAUL STREET  
 BALTIMORE, MARYLAND 21202  
**William H. McLeod**  
 KENNETH A. McCORD - P.E. 1974

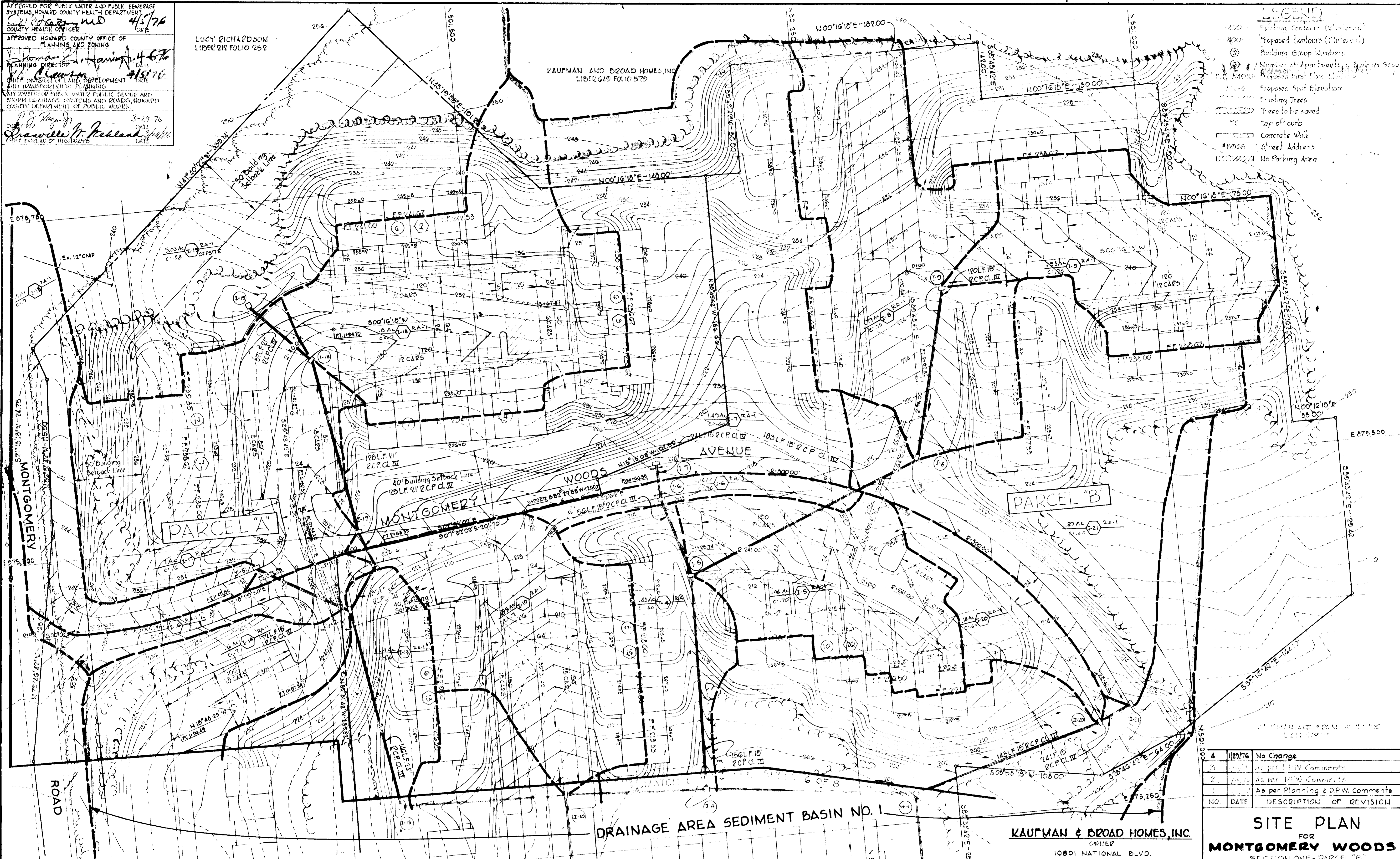
NO.	DATE	DESCRIPTION OF REVISION
4	1/27/76	Adjusted several Top Inlet Elev.
3	2/6/75	As per DPW Comments
2	1/17/75	As per F.I.W. Comments
1	1/21/75	As per Planning & D.P.W. Comments

**SITE PLANS**  
 FOR  
**MONTGOMERY WOODS**  
 SECTION ONE - PARCEL "B"  
**ROAD PROFILE & DETAILS**  
 DEVELOPER  
**JACYN DEVELOPMENT GROUP, INC.**  
 5406 Smokey Meadow Way  
 Columbia, Maryland 21044  
 1st Election District  
 Tax Map No 38  
 Date:  
 Howard County, Maryland  
 Parcel No. 823  
 Scale: As Shown

APPROVED FOR PUBLIC WATER AND PUBLIC SEWERAGE SYSTEMS, HOWARD COUNTY HEALTH DEPARTMENT  
 APPROVED FOR PLANNING AND ZONING OFFICE OF HOWARD COUNTY  
 APPROVED FOR PUBLIC WATER, PUBLIC SEWERAGE AND STORM DRAINAGE SYSTEMS AND ROADS, HOWARD COUNTY DEPARTMENT OF PUBLIC WORKS

LUCY RICHARDSON  
 LIBER 212 FOLIO 252

- LEGEND**
- Existing Contours (2' Interval)
  - - - Proposed Contours (2' Interval)
  - (10) Building Group Numbers
  - (10) Number of Apartments, Equivalents Group
  - Existing Final Floor Elevation
  - Proposed Spot Elevation
  - Existing Trees
  - Trees to be Saved
  - Top of Curb
  - Concrete Walk
  - Street Address
  - No Parking Area



NO.	DATE	DESCRIPTION OF REVISION
4	1/29/76	No Change
3	1/29/76	As per FEW Comments
2	1/29/76	As per P&Z Comments
1	1/29/76	As per Planning & DPW Comments

**SITE PLAN**  
 FOR  
**MONTGOMERY WOODS**  
 SECTION ONE - PARCEL "B"  
**DRAINAGE AREA MAP**  
 DEVELOPED BY  
 JACNY DEVELOPMENT GROUP, INC.  
 5406 Smith Meadow Way  
 Columbia, Maryland 21044

1<sup>st</sup> Election District  
 Tax Map No 38  
 Date: \_\_\_\_\_

Howard County, Maryland  
 Parcel No 822  
 Scale: 1" = 30'

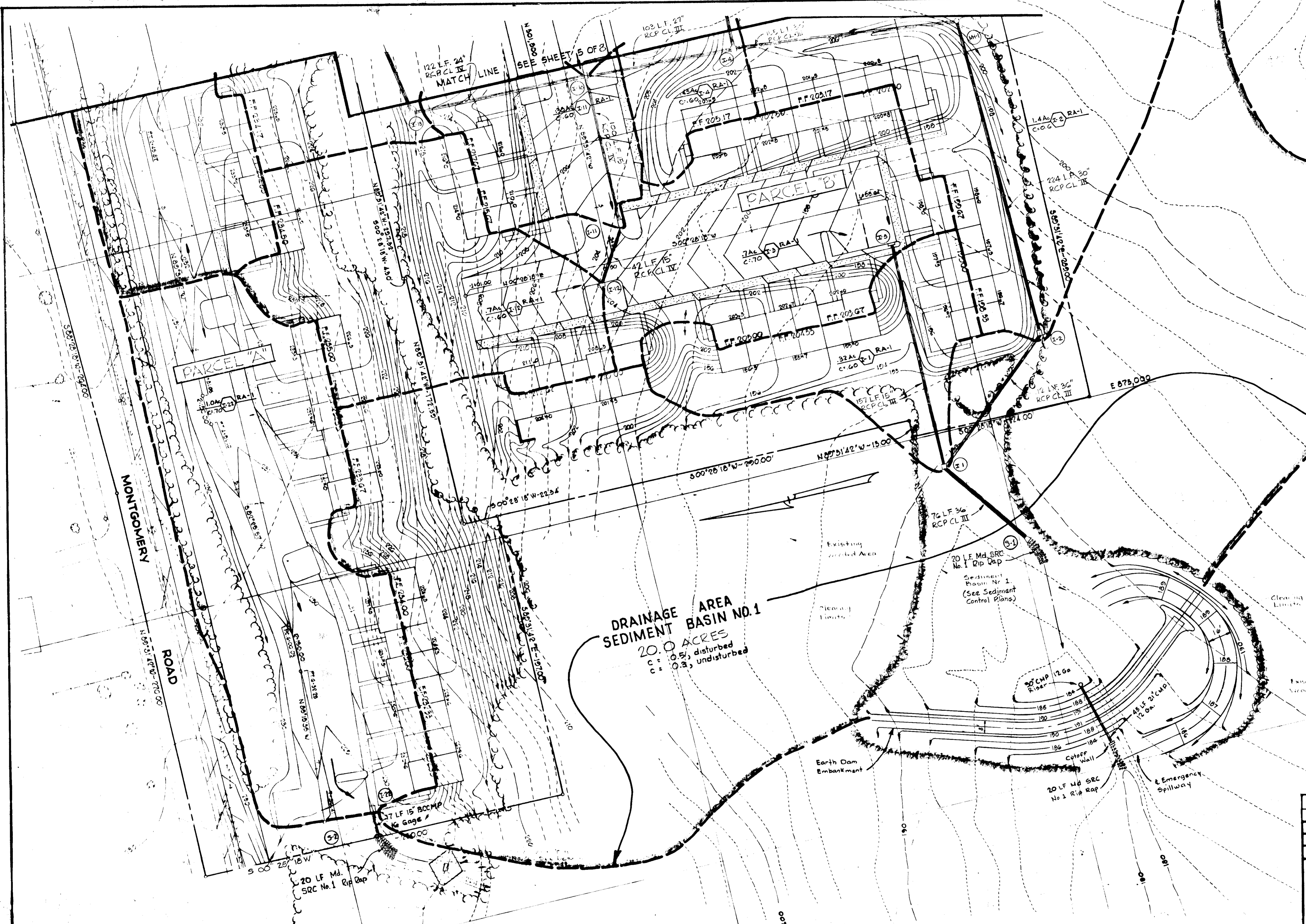
**KAUFMAN & BROAD HOMES, INC.**  
 OWNER  
 10801 NATIONAL BLVD.  
 LOS ANGELES, CALIFORNIA 90064

**WHITMAN, REQUARDT & ASSOCIATES**  
 ENGINEERS  
 1304 ST PAUL STREET  
 BALTIMORE, MARYLAND 21202

**APPROVED**  
 PLANNING BOARD  
 OF HOWARD COUNTY  
 DATE 4-16-75

*Kenneth A. McLeod*  
 KENNETH A. MCLEOD - PE 1974

APPROVED FOR PUBLIC WORKS AND PUBLIC SEWERAGE SYSTEMS, HOWARD COUNTY HEALTH DEPARTMENT.  
 COUNTY HEALTH OFFICER: *[Signature]* DATE: 4/5/76  
 APPROVED: HOWARD COUNTY OFFICE OF PLANNING AND ZONING  
 PLANNING DIRECTOR: *[Signature]* DATE: 4-6-76  
 CHIEF DIVISION OF LAND DEVELOPMENT AND TRANSPORTATION PLANNING  
 APPROVED FOR PUBLIC WATER, PUBLIC SEWER AND STORM DRAINAGE SYSTEMS AND ROADS, HOWARD COUNTY DEPARTMENT OF PUBLIC WORKS.  
 DIRECTOR: *[Signature]* DATE: 3-29-76  
 CHIEF, BUREAU OF HIGHWAYS: *[Signature]* DATE: 3/29/76



**DRAINAGE AREA SEDIMENT BASIN NO. 1**  
 20.0 ACRES  
 C: 0.5, disturbed  
 C: 0.3, undisturbed

**WHITMAN, REQUARDT & ASSOCIATES** ENGINEERS  
 1304 ST. PAUL STREET BALTIMORE, MARYLAND 21202  
*[Signature]*  
 KENNETH A. McCORD - P.E. 1974

**KAUFMAN & BROAD HOMES, INC** OWNER  
 10801 NATIONAL BLVD. LOS ANGELES, CALIFORNIA 90064

**APPROVED**  
 PLANNING BOARD OF HOWARD COUNTY  
 DATE: 4-16-75  
*[Signature]*

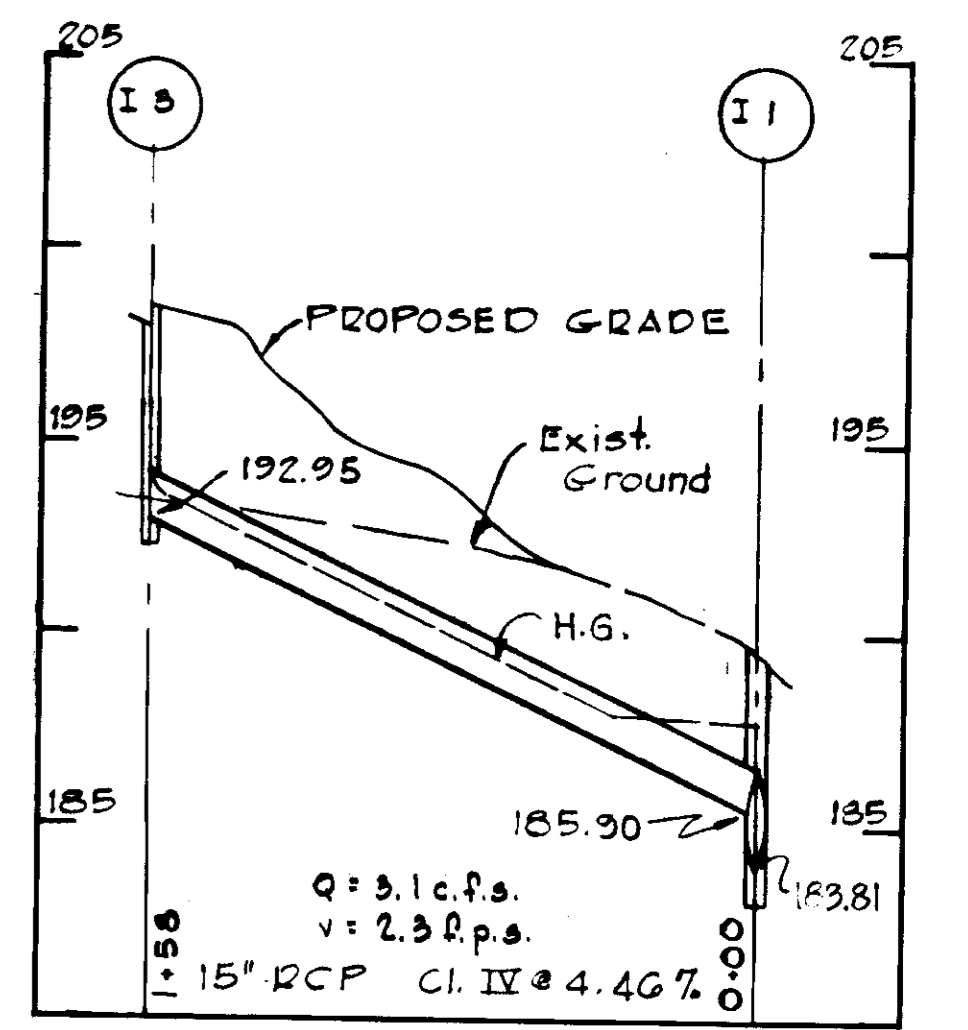
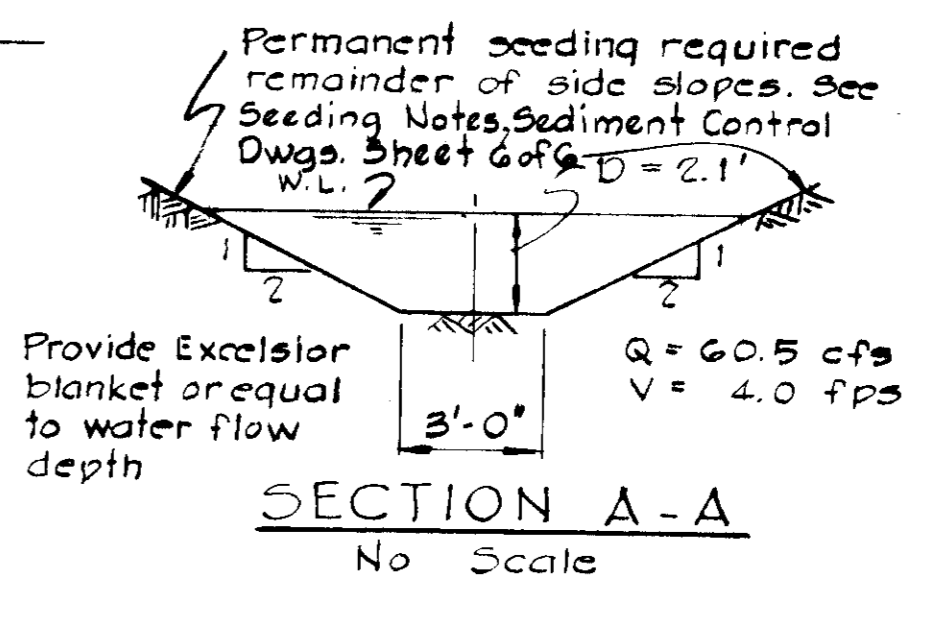
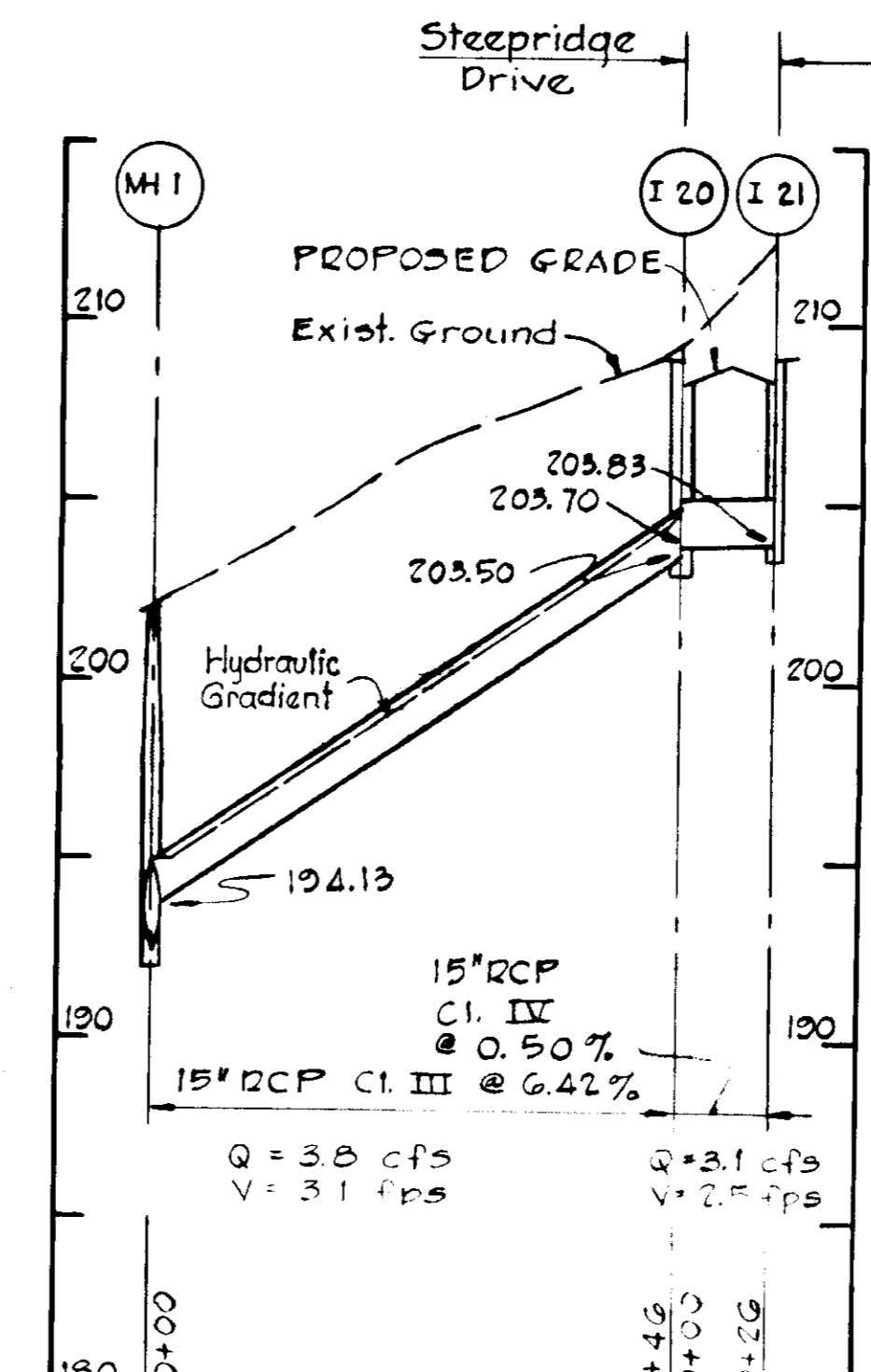
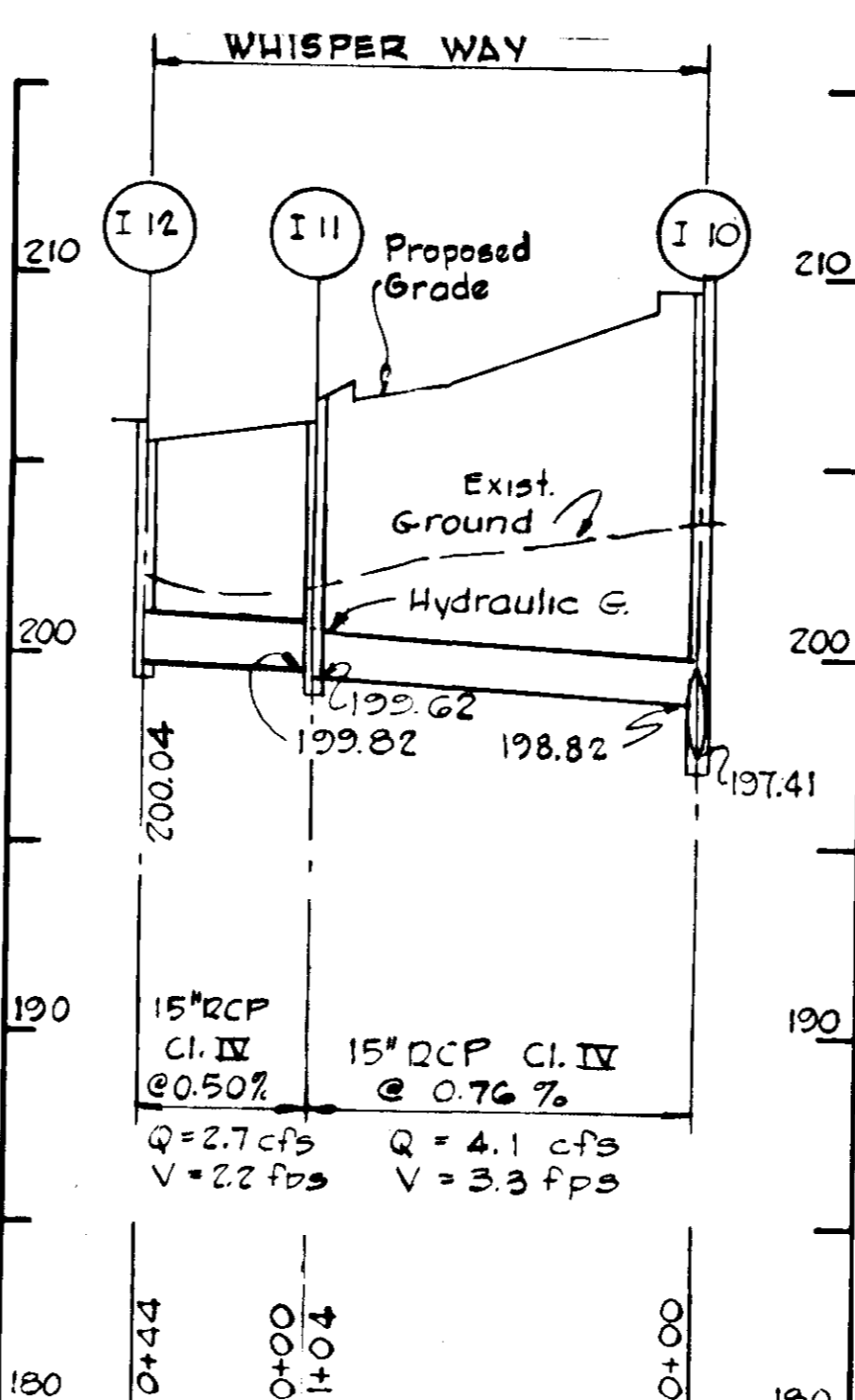
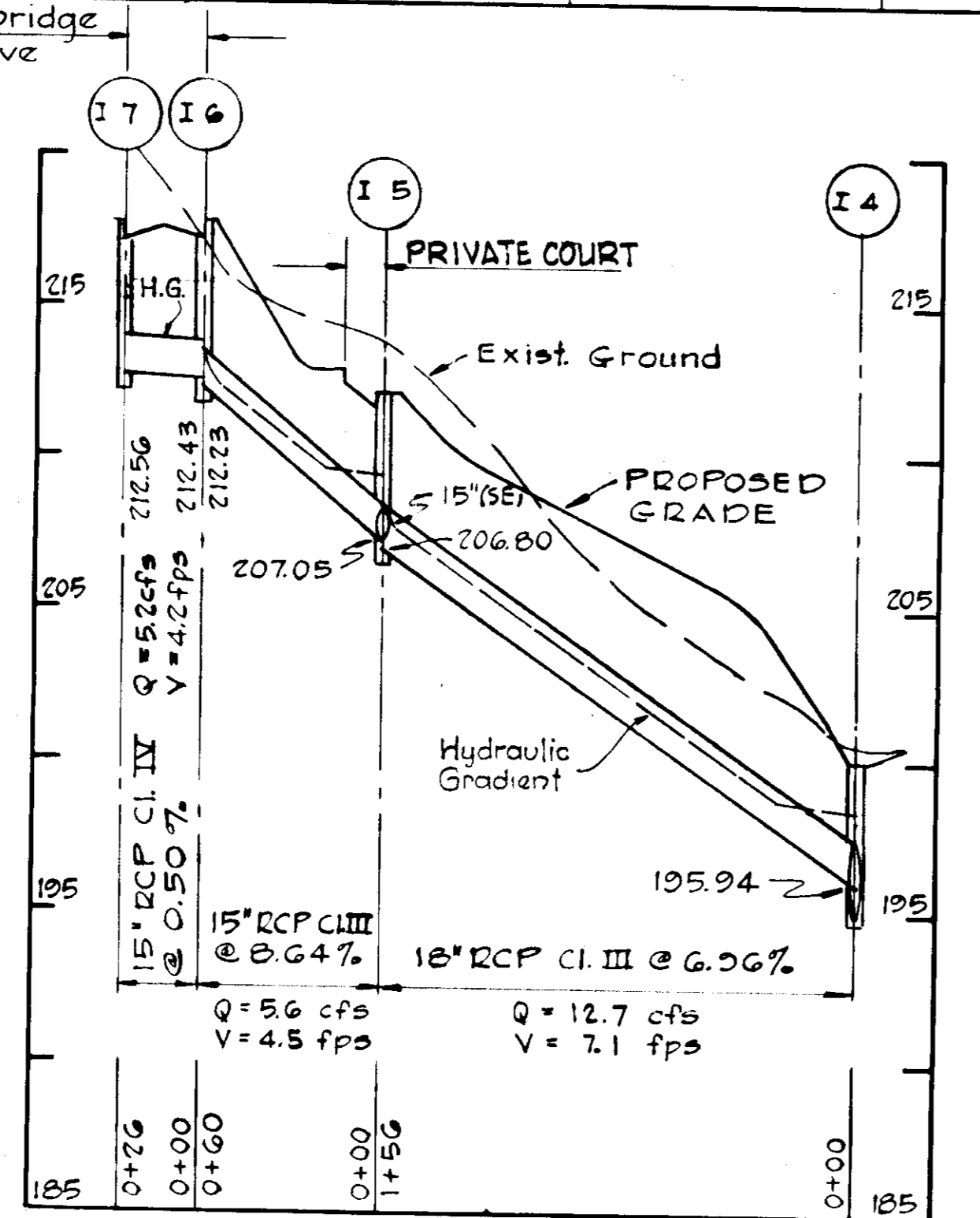
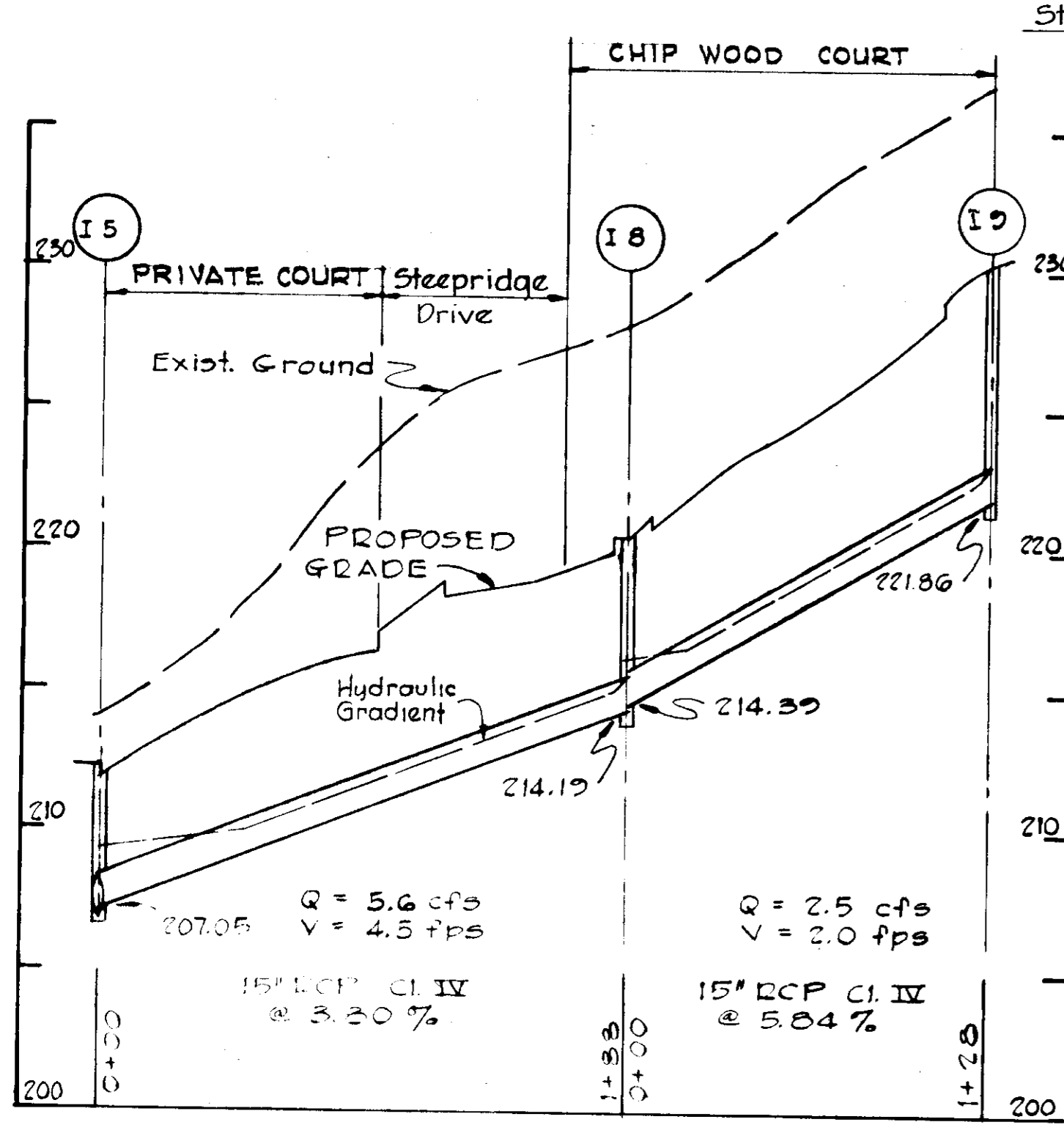
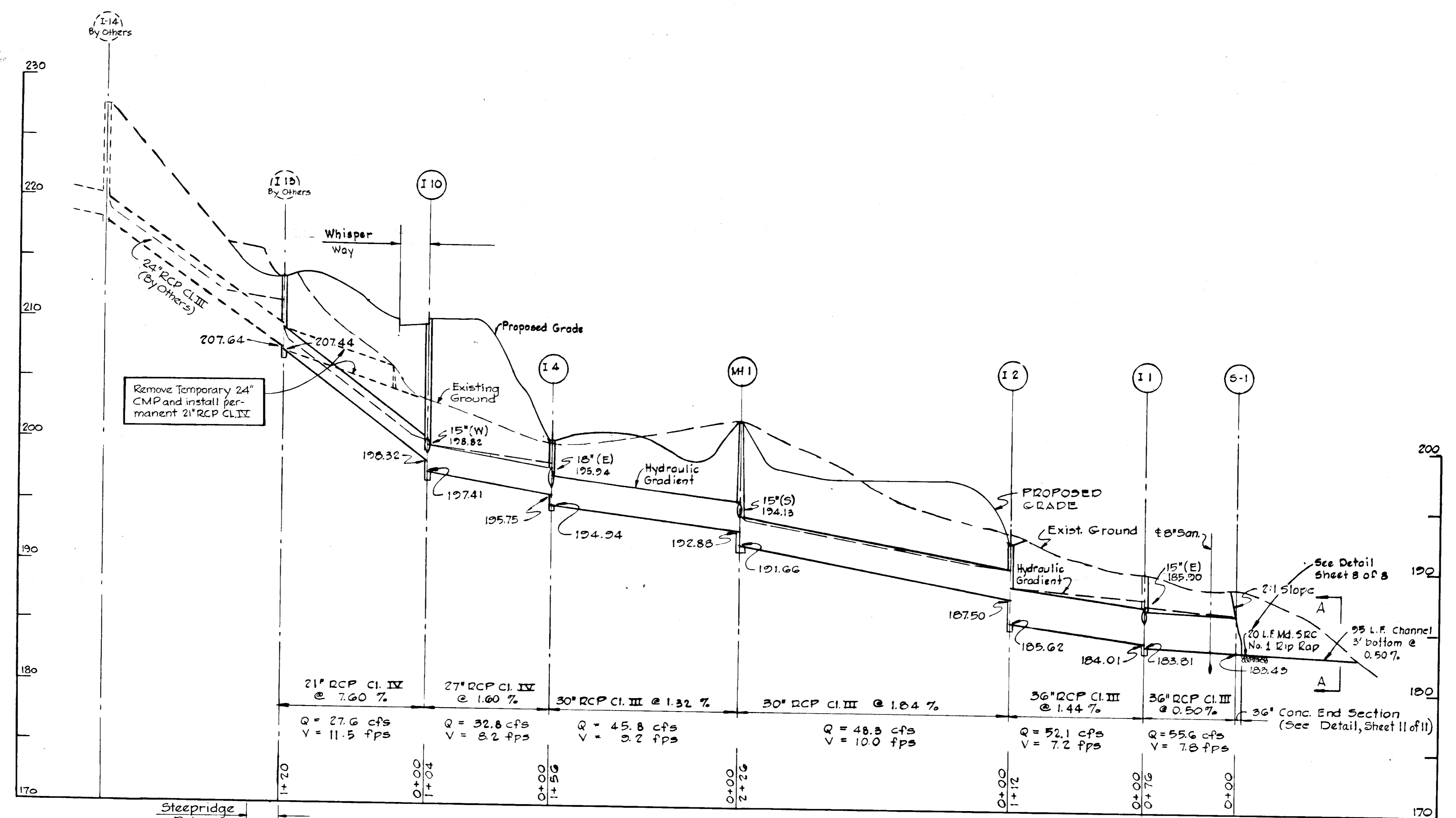
4	1/29/76	No Change
3	4/6/75	As per DPW Comments
2	1/16/75	As per DPW Comments
1	1/15/75	As per Planning & DPW Comments
NO.	DATE	DESCRIPTION OF REVISION

**SITE PLAN FOR MONTGOMERY WOODS SECTION ONE-PARCEL 'B' DRAINAGE AREA MAP**  
 DEVELOPER: JACYN DEVELOPMENT GROUP, INC.  
 5406 South Meadow Way Columbia, Maryland 21044  
 1<sup>st</sup> Election District: Howard County, Maryland  
 Tax Map No. 38: Parcel No. 823  
 Date: Scale: 1" = 30'

APPROVED FOR PUBLIC WATER AND PUBLIC SEWERAGE SYSTEMS, HOWARD COUNTY HEALTH DEPARTMENT.  
*Thomas W. Harris* 4/5/76  
 COUNTY HEALTH OFFICER DATE

APPROVED HOWARD COUNTY OFFICE OF PLANNING AND ZONING  
*Thomas W. Harris* 4-6-76  
 PLANNING DIRECTOR DATE

APPROVED FOR PUBLIC WATER PUBLIC SEWER AND STORM DRAINAGE SYSTEMS AND ROADS, HOWARD COUNTY DEPARTMENT OF PUBLIC WORKS.  
*Franklin A. McLeod* 3/29/76  
 DIRECTOR DATE  
 CHIEF BUREAU OF HIGHWAYS DATE



**APPROVED**  
 PLANNING BOARD  
 OF HOWARD COUNTY  
 DATE 4-16-75  
*Thomas W. Harris*  
 KAUFMAN & BROAD HOMES, INC.  
 OWNER  
 10801 NATIONAL BLVD.  
 LOS ANGELES, CALIFORNIA 90064

**WHITMAN, REQUARDT & ASSOCIATES**  
 ENGINEERS  
 1304 ST. PAUL STREET  
 BALTIMORE, MARYLAND 21202  
*Franklin A. McLeod*  
 KENNETH A. McCORM - PE 1974

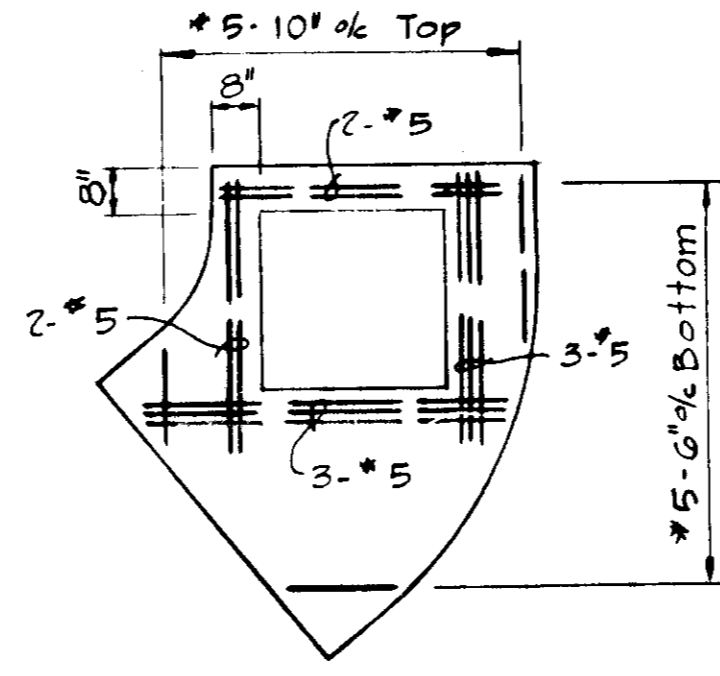
NO.	DATE	DESCRIPTION OF REVISION
4	1/29/76	Changed Several Proposed Grade Lines
3	2/6/75	As per DPW Comments
2	1/10/75	As per DPW Comments
1	10/2/74	As per Planning & D.P.W. Comments

**SITE PLANS**  
 FOR  
**MONTGOMERY WOODS**  
 SECTION ONE - PARCEL "E"  
**STORM DRAIN PROFILES**  
 DEVELOPER  
 JACYN DEVELOPMENT GROUP, INC.  
 8406 Smokey Meadow Way  
 Columbia, Maryland 21044

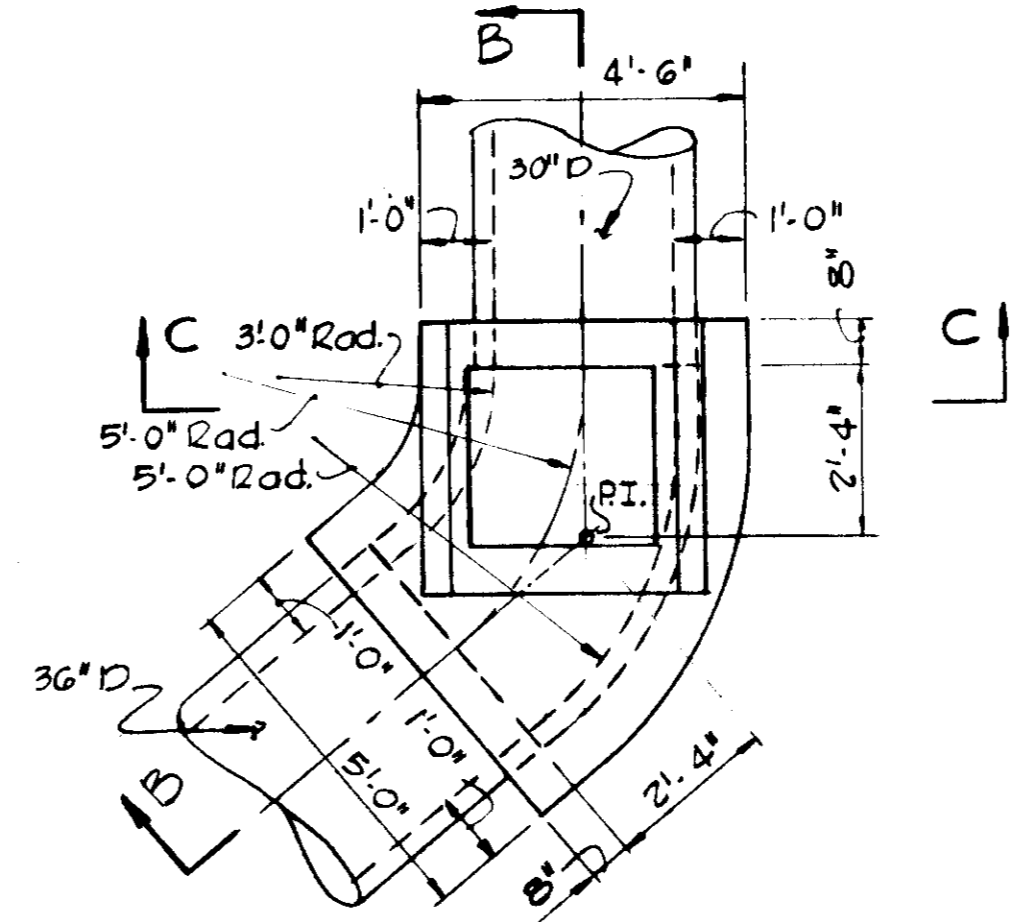
1st Election District  
 Tax Map No. 38  
 Date:

Howard County, Maryland  
 Parcel No. 823  
 Scale: H: 1"=50', V: 1"=5'

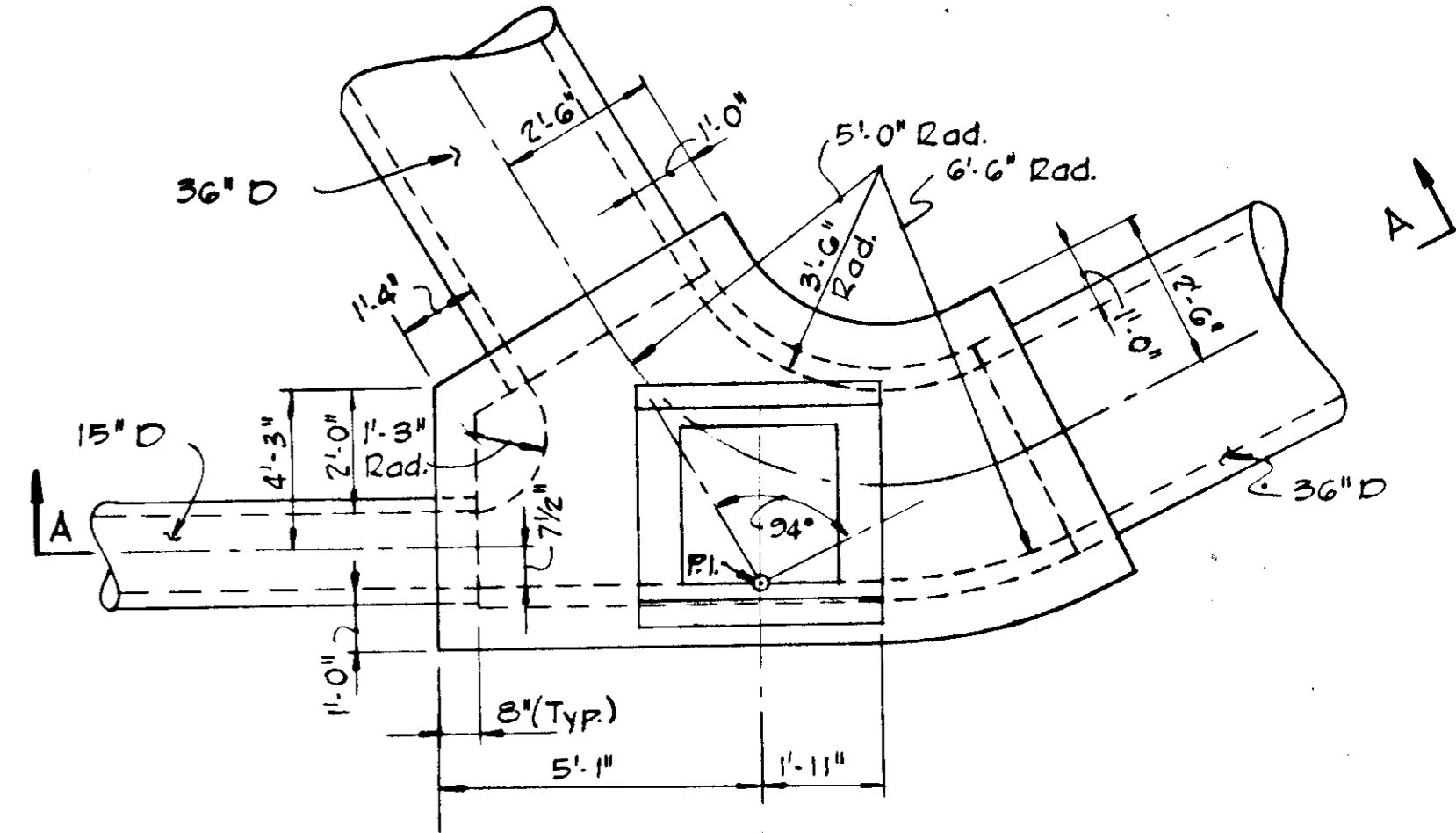
APPROVED FOR PUBLIC WATER AND PUBLIC SEWERAGE SYSTEMS, HOWARD COUNTY HEALTH DEPARTMENT.  
 COUNTY HEALTH OFFICER DATE  
 APPROVED HOWARD COUNTY OFFICE OF PLANNING AND ZONING  
 PLANNING DIRECTOR DATE  
 CHIEF DIVISION OF LAND DEVELOPMENT AND TRANSPORTATION PLANNING DATE  
 APPROVED FOR PUBLIC WATER PUBLIC SEWER AND STORM DRAINAGE SYSTEMS AND ROADS, HOWARD COUNTY DEPARTMENT OF PUBLIC WORKS.  
 DIRECTOR DATE  
 CHIEF BUREAU OF HIGHWAYS DATE



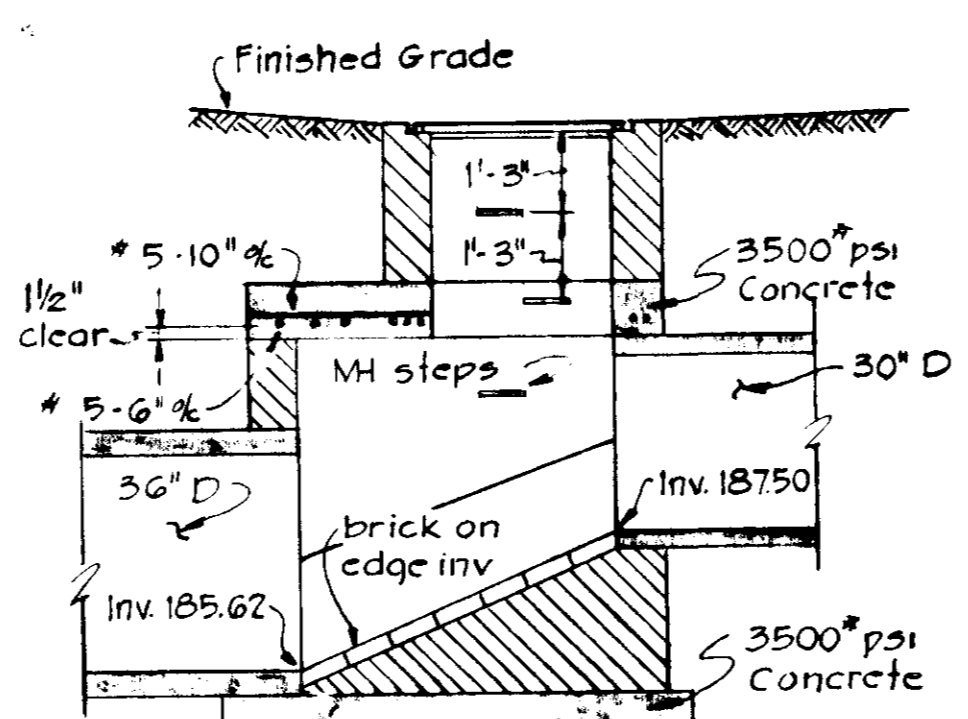
PLAN - SLAB REINFORCING



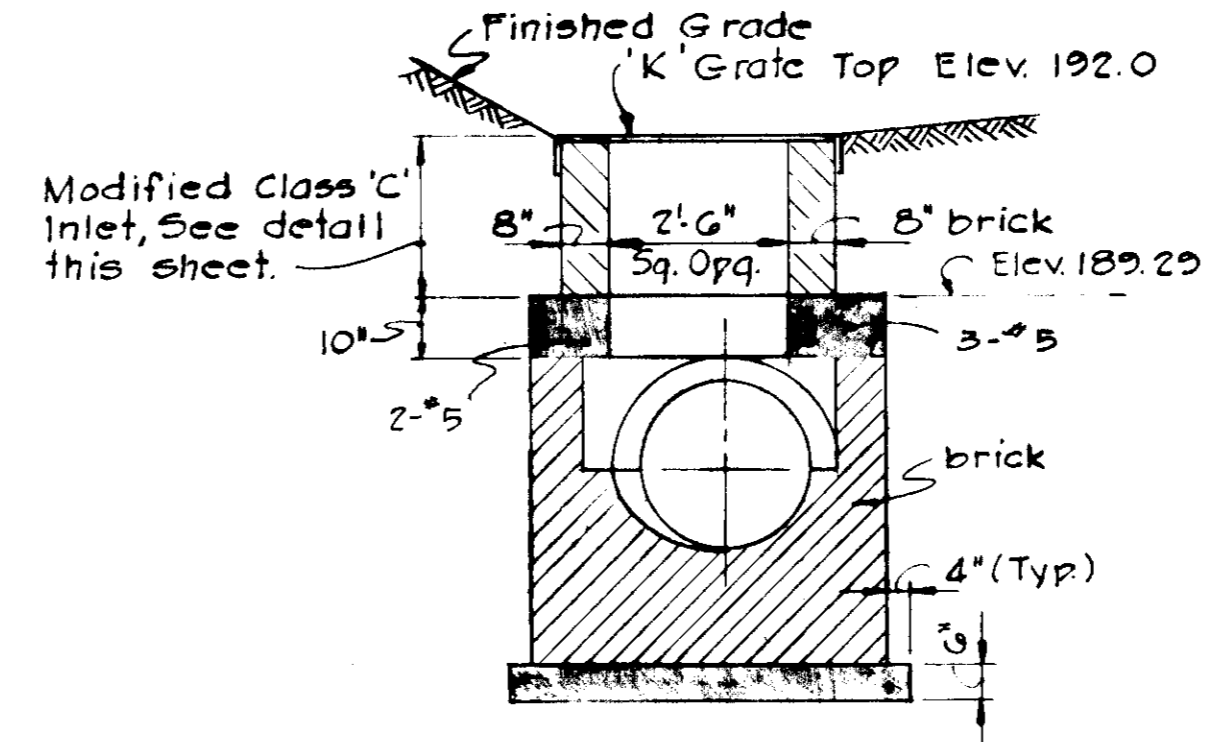
PLAN - INLET GRATE REMOVED



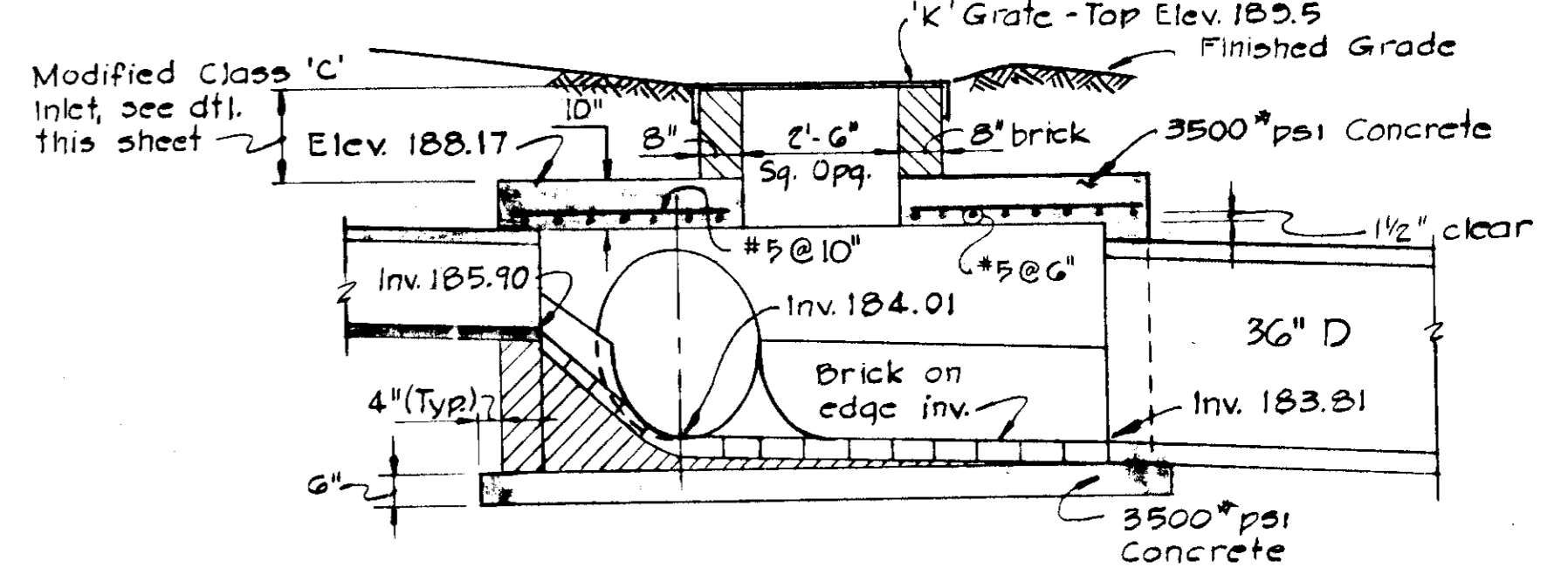
PLAN - INLET GRATE REMOVED



SECTION B-B



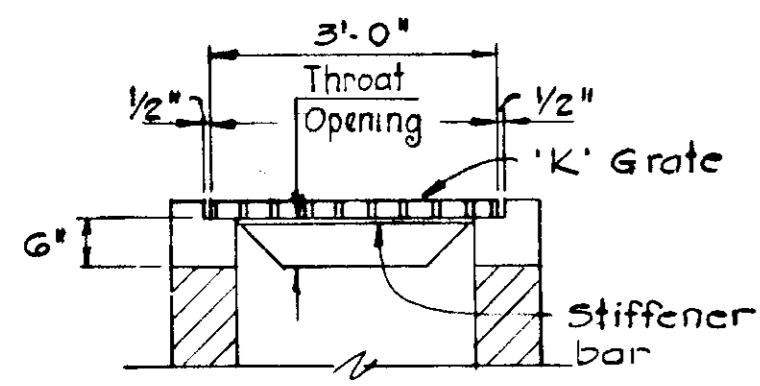
SECTION C-C



SECTION A-A

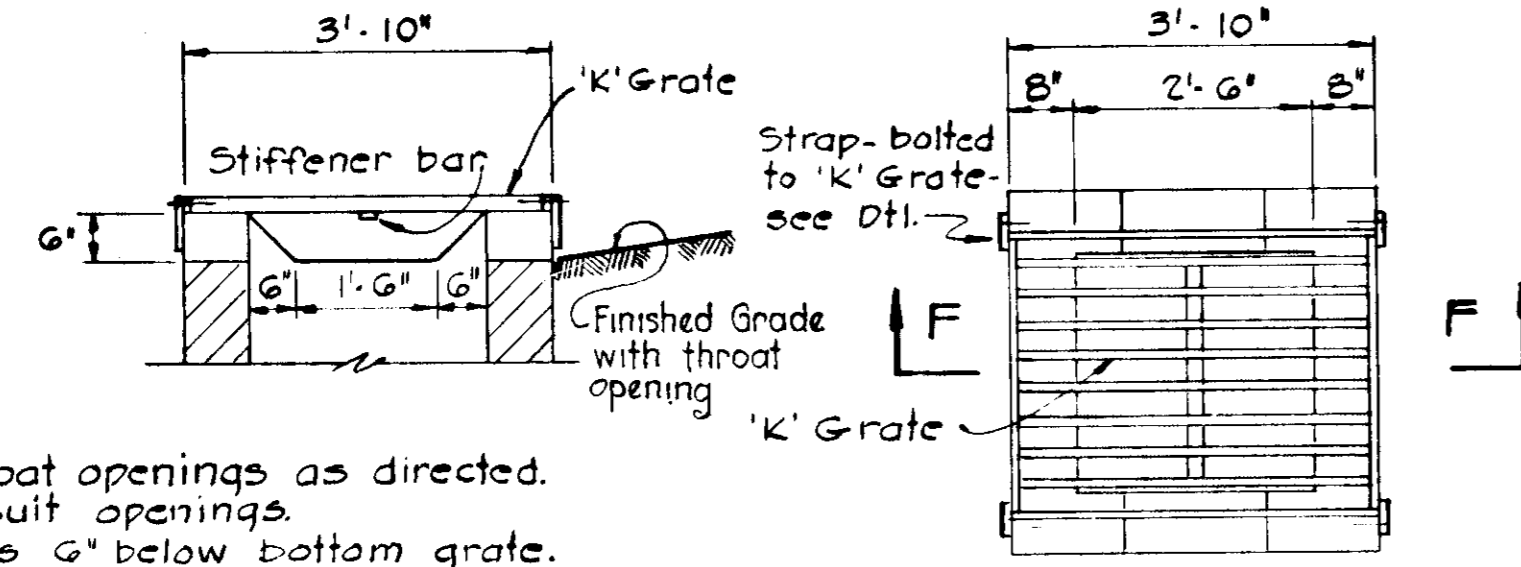
DETAILS - INLET I-2

Scale: 3/8" = 1'-0"



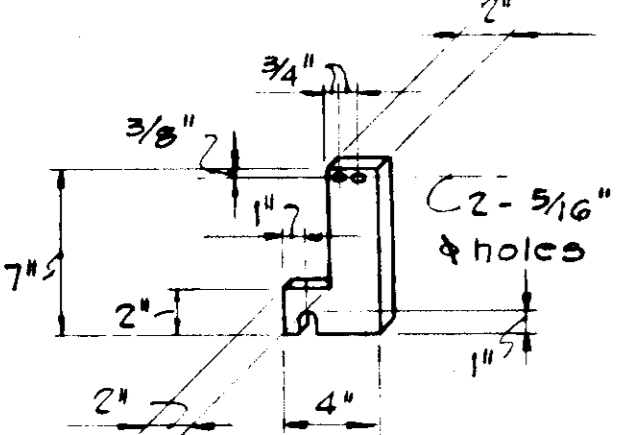
- NOTES:  
 1. Provide throat openings as directed.  
 2. Grade to suit openings.  
 3. Set openings 6" below bottom grate.

K' GRATE DETAILS

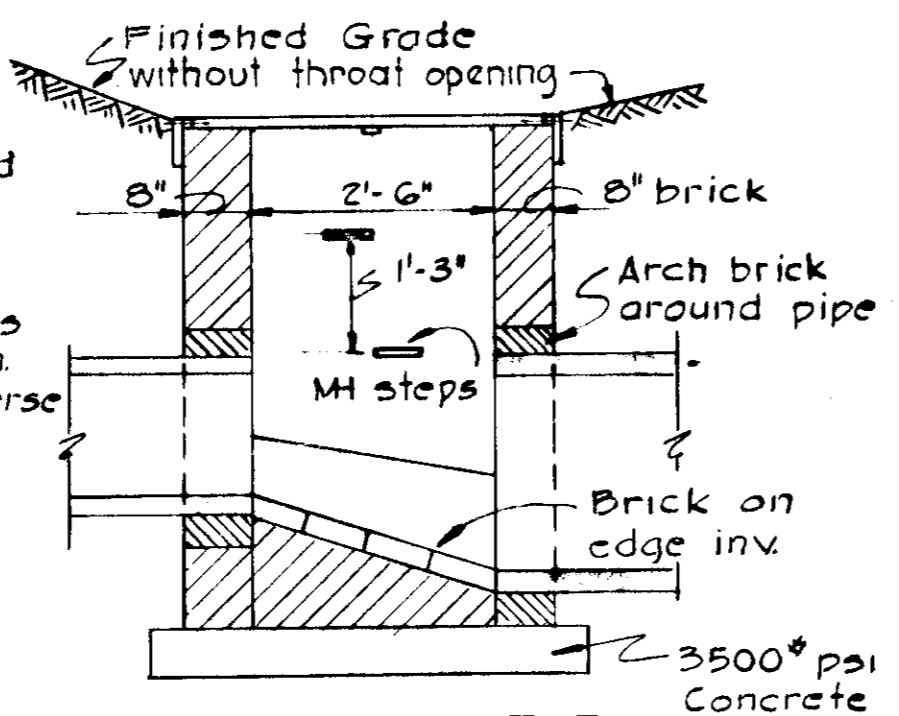


PLAN

- NOTES:  
 1. The grating shown is similar to Md. S.R.C. standard 'K' Grate.  
 2. The inlet shown is similar to Howard County Std. Type D, Class 'C' inlet. See Dwg. G4-C, page 113-C.  
 3. Gratings are subject to approval for each job. Any type of transverse bars may be used which will support a min. uniform load of 150\*psf. The transverse bars shall be held rigid by spacer bars.  
 4. All material to be hot dipped galv.



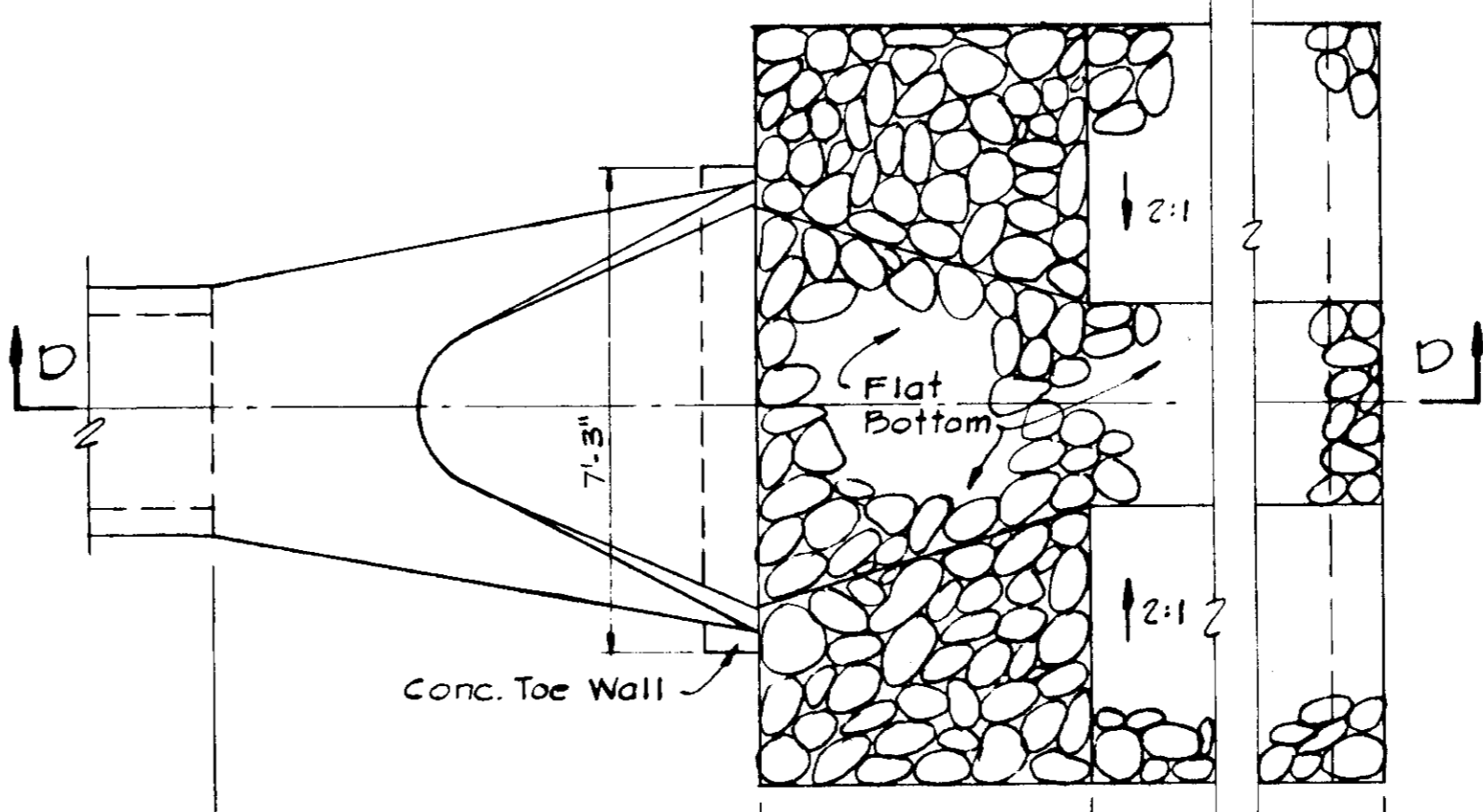
STRAP DETAIL



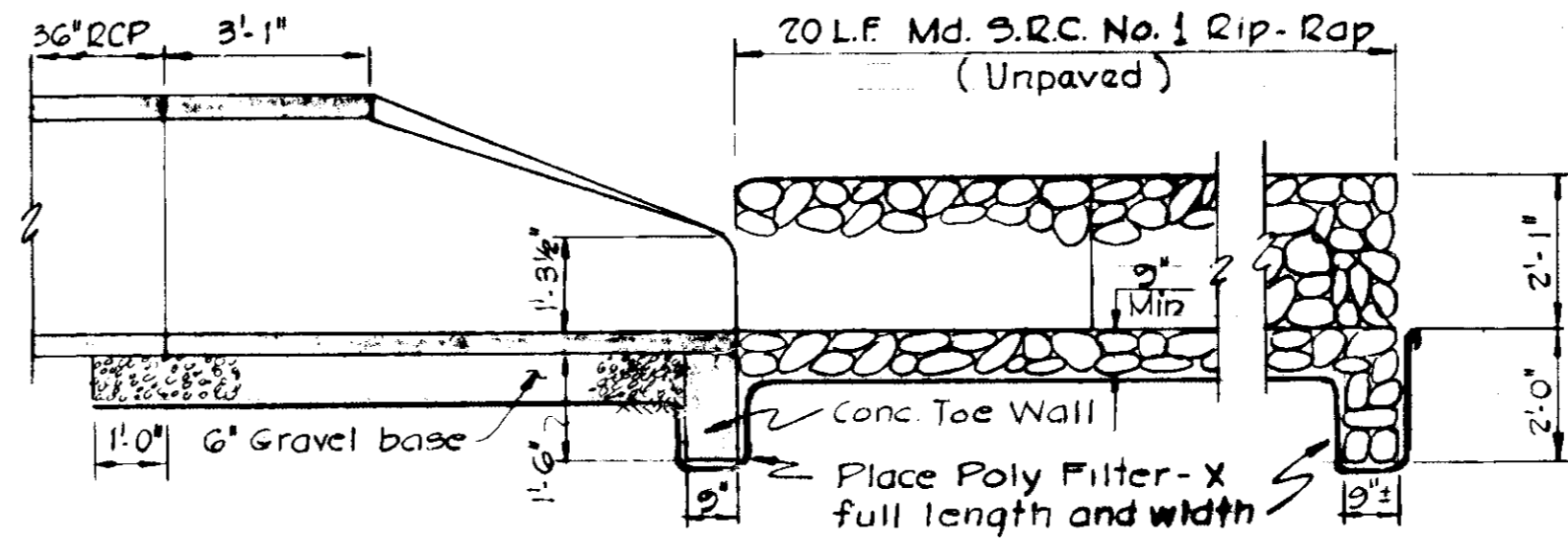
SECTION F-F

DETAILS - MODIFIED CLASS 'C' INLET

Scale: 1/2" = 1'-0"



PLAN



SECTION D-D

DETAILS - CONCRETE END SECTION S-1

Scale: 3/8" = 1'-0"

APPROVED  
 PLANNING BOARD  
 OF HOWARD COUNTY

DATE 4-16-75

KAUFMAN & BROAD HOMES, INC.

10801 NATIONAL BLVD.  
 LOS ANGELES, CALIFORNIA 90064

WHITMAN, REQUARDT & ASSOCIATES  
 ENGINEERS

1824 ST. PAUL STREET  
 BALTIMORE, MARYLAND 21202

APPROVED  
 HOWARD COUNTY HEALTH DEPARTMENT

4	1/29/76	No Change
3	2/6/75	As per DPW Comments
2	1/10/75	As per DPW Comments
1	12/2/74	As per Planning & D.P.W. Comments
NO.	DATE	DESCRIPTION OF REVISION

SITE PLANS  
 FOR  
 MONTGOMERY WOODS  
 SECTION ONE - PARCEL "P"  
 STORM DRAIN DETAILS  
 DEVELOPER  
 JACYN DEVELOPMENT GROUP, INC.  
 5408 Smooth Meadow Way  
 Columbia, Maryland 21044

1st Election District  
 Tax Map No. 36  
 Date:

Howard County, Maryland  
 Parcel No 025  
 Scale: As shown