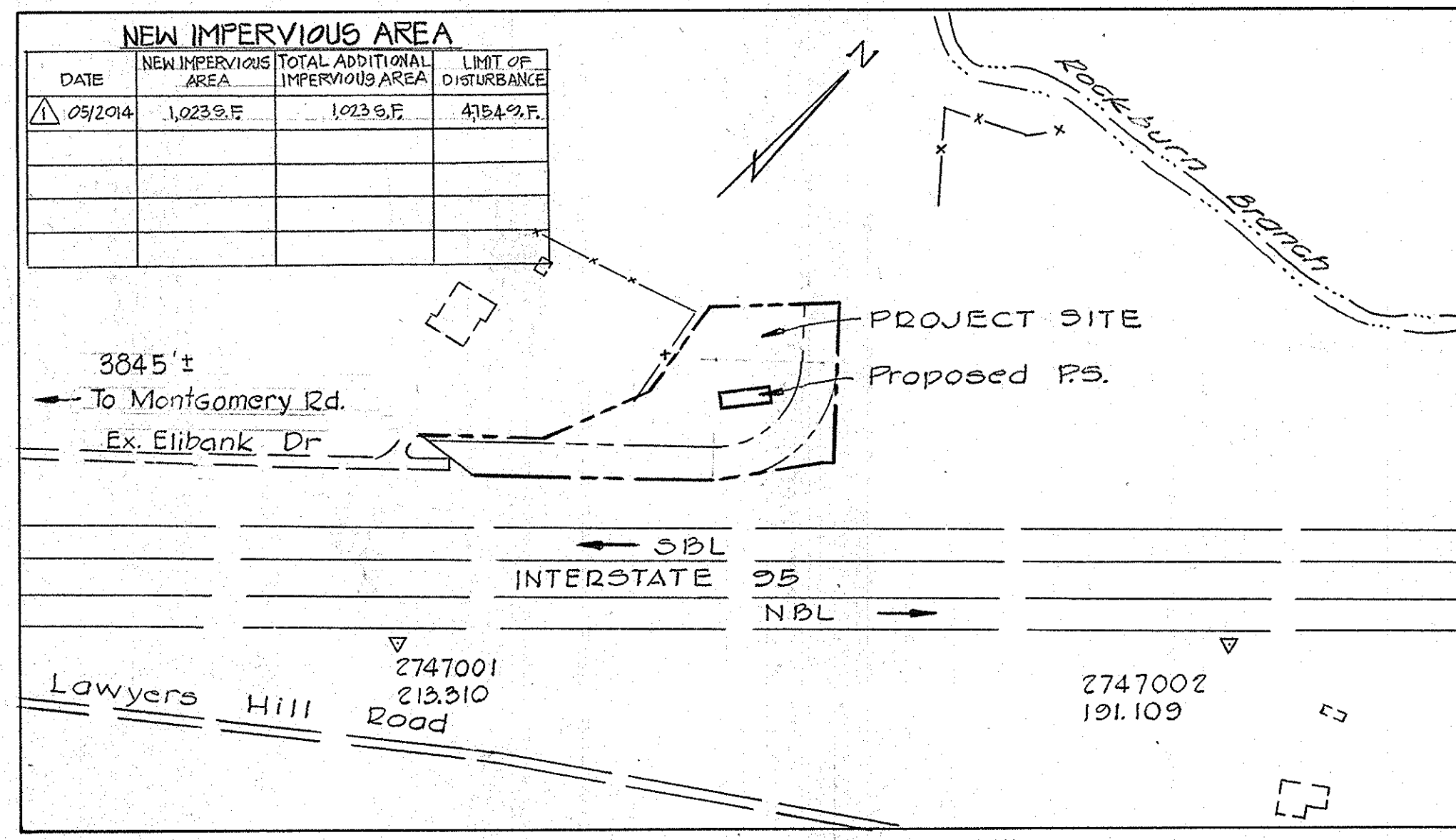
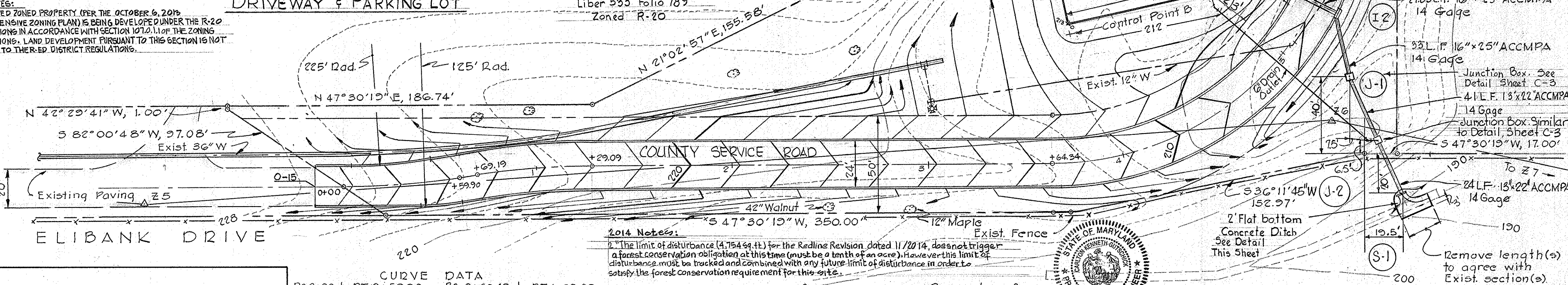
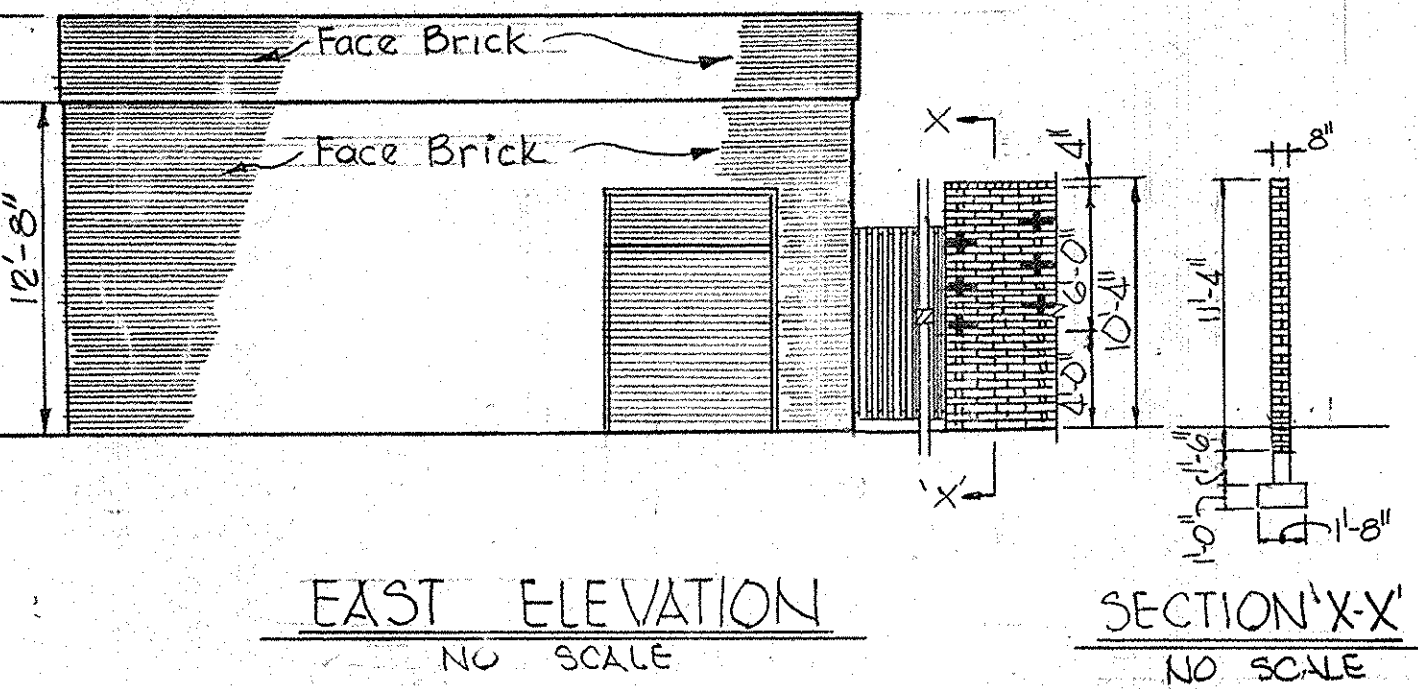
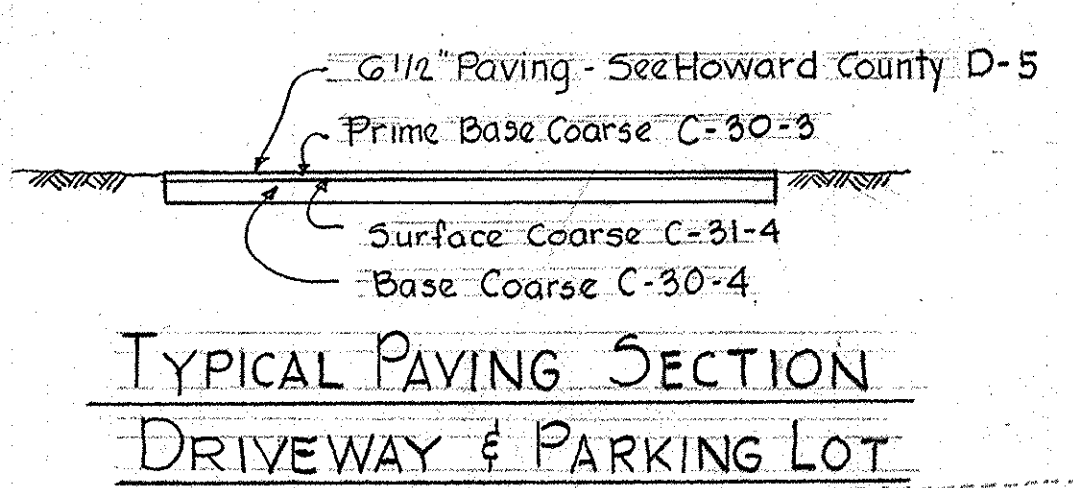


AREA Ac.	NO	TYPE	TOP ELEV.	INV. ELEV.	LOCATION
3.6	I 1	A-10 Inlet Modified	208.15	204.33	13.42' Lt. E Sta 5+30
0.4	I 2	A-5 Inlet	208.15	203.00	13.42' Rt. E Sta. 5+30
	S 1	54x18x22" End Sect.	-	190.00	As Shown
	J 1	Junction Box	204.88	201.80	As Shown
	J 2	Junction Box	197.86	194.78	As Shown



Area of Site	1.87 Acs
No. of Employees	0
Parking Required	0
Parking Provided	2
Area to be graded	1.52 Acs
Area to be roofed	0.06 Acs
Area to be paved	0.43 Acs
Area to be seeded	1.03 Acs
Area to be undisturbed	0.35 Acs
Zoned	R-20
Tax Map No.	32



WHITMAN, REQUARDT AND ASSOCIATES  
ENGINEERS  
1304 ST. PAUL STREET  
BALTIMORE, MARYLAND  
*Kenneth A. McCord*  
Kenneth A. McCord P.E. 1974

HOWARD COUNTY, MARYLAND  
OWNER AND DEVELOPER  
LIBER 669 FOLIO 489  
ZONED R-20

PC 0+00 to PT 0+59.90	RC 0+60.19 to PT 1+29.09
$\Delta = 8^{\circ}17'54''$ T = 30.00'	$\Delta = 8^{\circ}17'54''$ T = 30.00'
R = 413.54' Chd. = 59.84'	R = 413.54' Chd. = 59.84'
Arc = 59.90'	Arc = 59.90'
Chd. Brq. = N 43° 21' 22" E	Chd. Brq. = N 43° 21' 22" E

STATE OF MARYLAND  
PROFESSIONAL CERTIFICATION  
FOR REVISION 11-5-14  
I hereby certify that these documents were prepared or approved by me, and that I am a duly licensed Professional Engineer under the laws of the State of Maryland.  
License No. 12915  
Expiration Date: May 26, 2016

Reviewed for HOWARD S.C.D. Name and meets technical requirements.  
*Robert W. Fisher* 10-14-75  
Signature Date  
U.S. Soil Conservation Service

APPROVED FOR SOIL EROSION AND SEDIMENT CONTROL BY THE HOWARD SOIL CONSERVATION DISTRICT.  
*Robert W. Fisher* 10/14/75  
APPROVED HOWARD S.C.D. DATE

APPROVED FOR STORM DRAINAGE SYSTEMS AND ROADS. HOWARD COUNTY DEPARTMENT OF PUBLIC WORKS  
*W. O. Falbot* 10-22-75  
DIRECTOR DATE

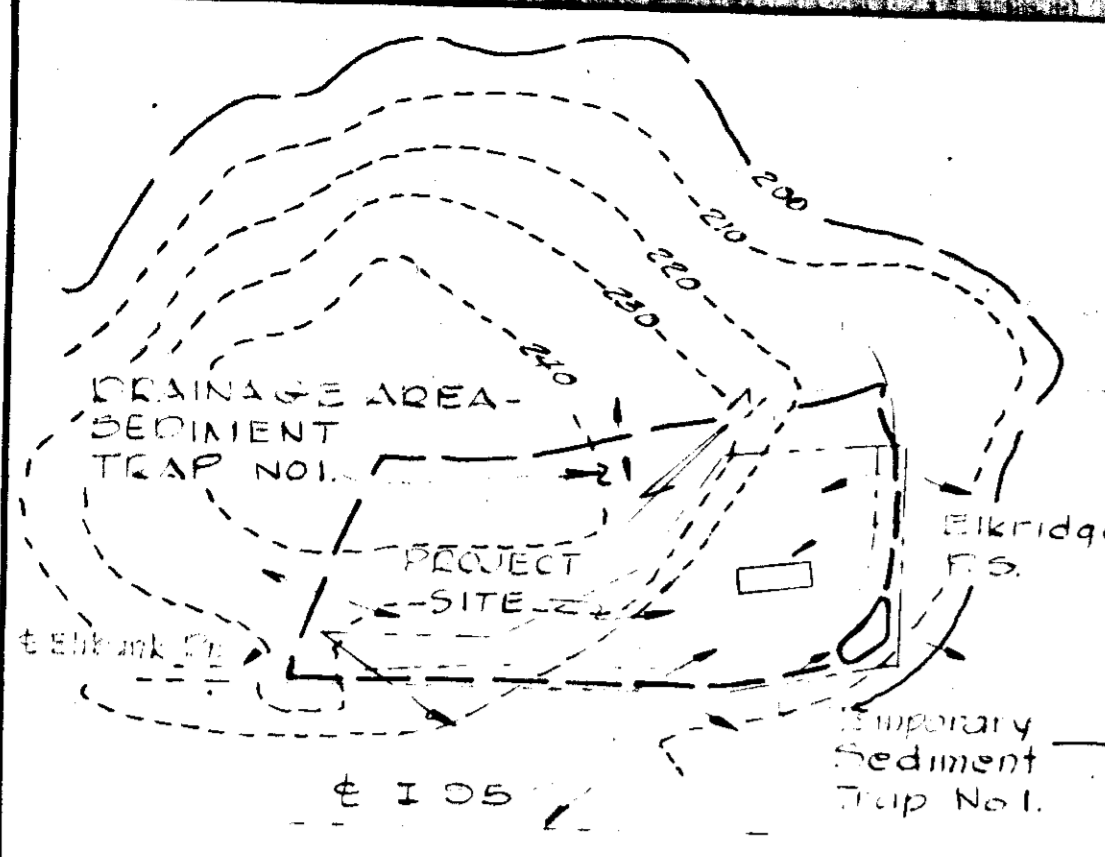
APPROVED: HOWARD COUNTY OFFICE OF PLANNING AND ZONING  
*Thomas L. Harris* 10-23-75  
PLANNING DIRECTOR DATE

CERTIFICATION BY THE ENGINEER  
"I certify that this plan, for Erosion and Sediment control represents a practical and workable plan based on my personal knowledge of the site condition and it was prepared in accordance with the requirements of the Howard Soil Conservation District."  
*Kenneth A. McCord* 2-13-75  
Signature by Engineer Date

CERTIFICATION BY THE DEVELOPER  
"I certify that all development and/or construction will be done according to these Plans of Development and Plans for Erosion and Sediment Control and I also authorize periodic on-site inspection by the Howard Soil Conservation District or their authorized agents as are deemed necessary. Deviation from this plan will not be made unless authorized by the Howard Soil Conservation District."  
*William A. Altman* 2/14/75  
Signature of Developer Date

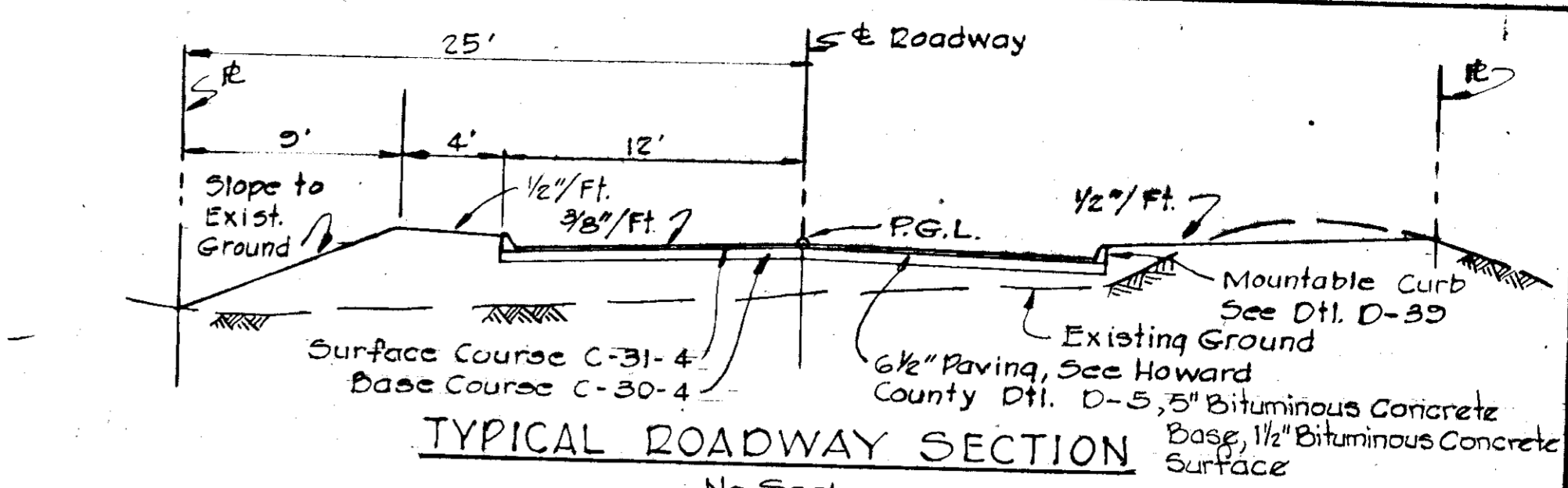
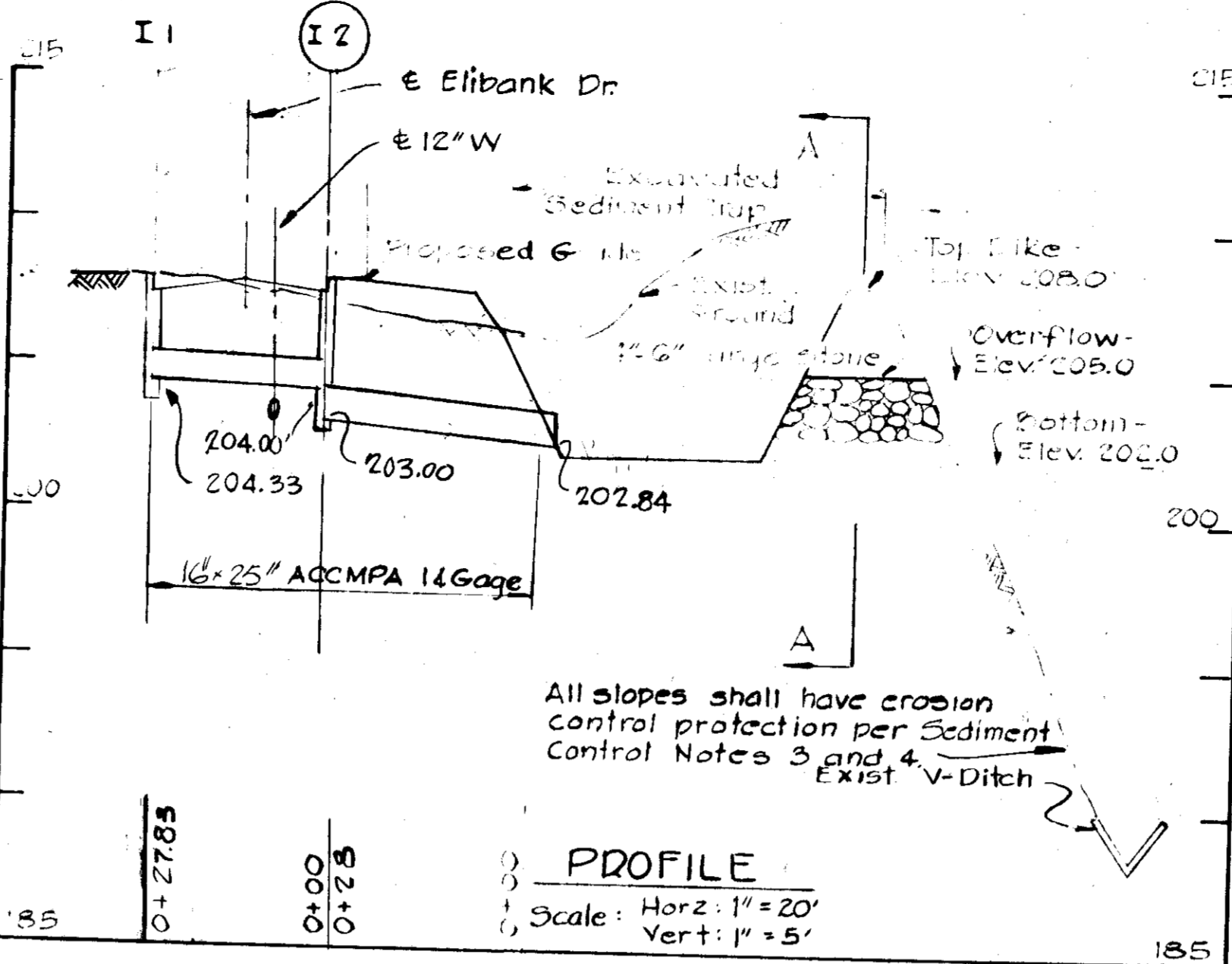
NO.	DATE	DESCRIPTION OF REVISION
1	11/20/14	GENERATOR PAD AND NOTES ADDED

SITE DEVELOPMENT PLAN  
FOR  
ELKRIDGE WATER PUMPING STATION  
PROJECT No. W-4-8035  
CONTRACT No. 399-W  
ELECTION DISTRICT NO. 1  
HOWARD COUNTY, MARYLAND  
DATE: JANUARY 18, 1975 SCALE: AS SHOWN  
OCTOBER 5, 1975

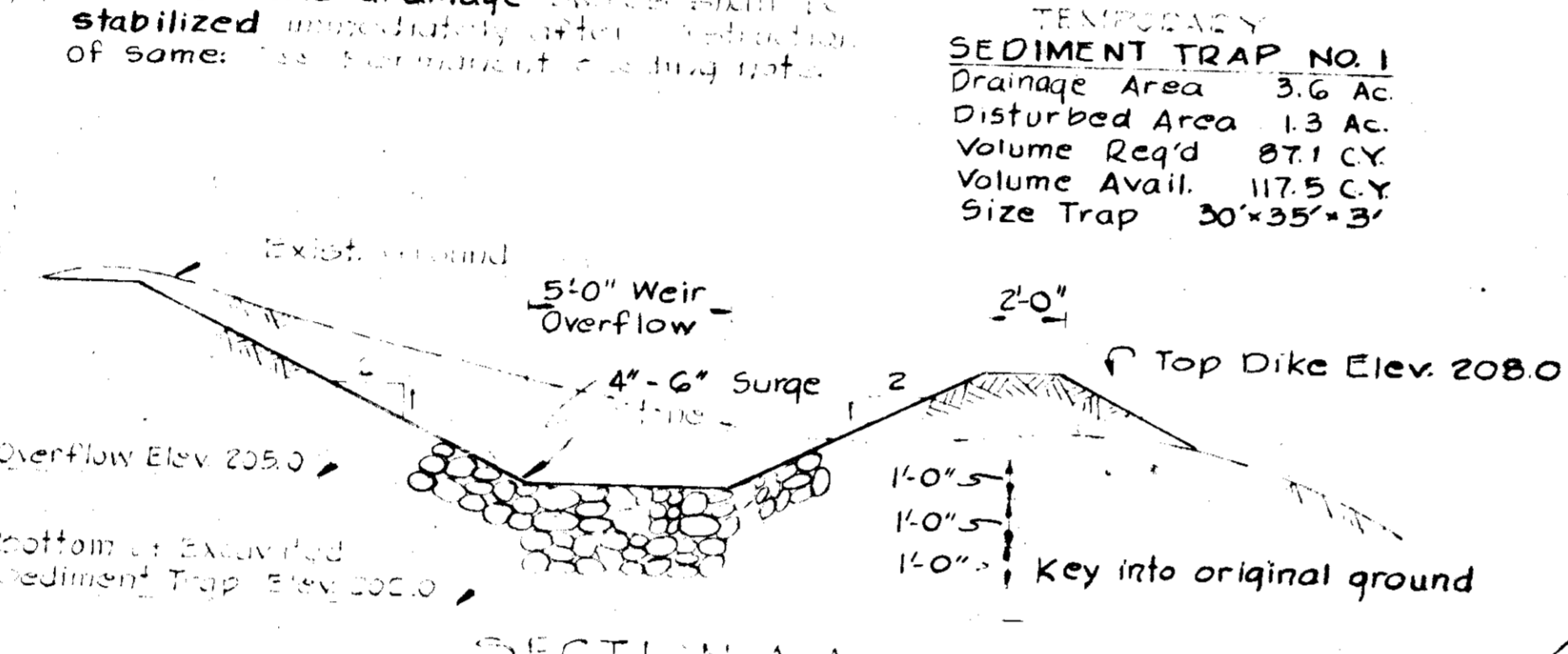
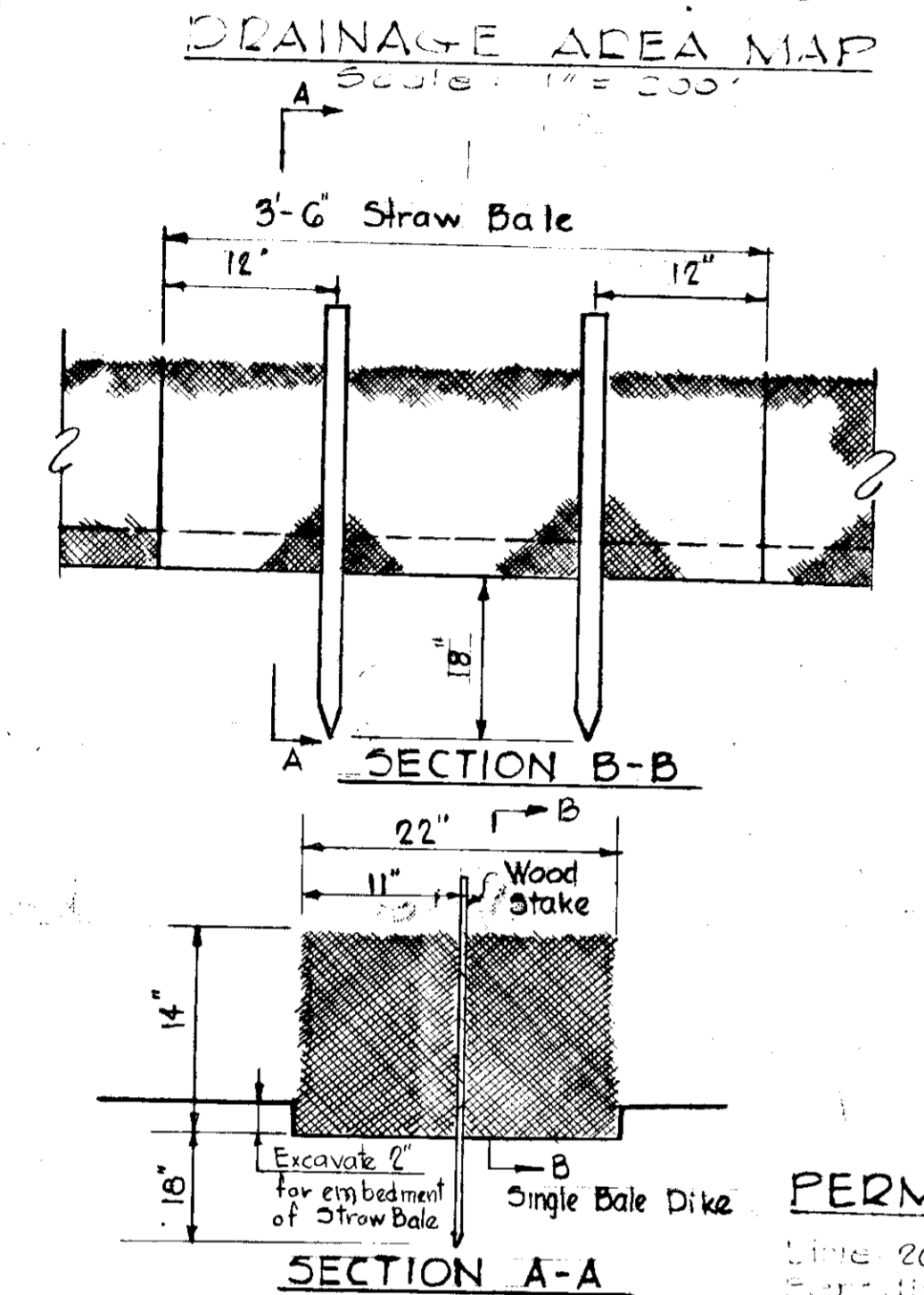


**SEDIMENT CONTROL NOTES**

- All sediment control measures must be constructed and installed prior to any earth cutting.
- No temporary sediment control structures may be removed or destroyed without approval of the Howard County Soil Conservation District.
- All disturbed areas are to be seeded and shall receive the following treatments:
  - Annual Ryegrass (20%) Kentucky Blue Grass (20%) & Kentucky 51" Fescue (60%)
  - Rate shall be 200#/Acre - sown with seed
  - Annual application minimum of two (2) times with York Label Fertilizer and topsoil with conditioner, surface preparation to include ground limestone over topsoil surface area at the rate of 1 1/4" (1000#) Superphosphate at the rate of 300#/Acre (1000#) or 1/2" (500#) Superphosphate at the rate of 300#/Acre (1000#)
  - Mulch areas with straw at rate of 75#/1000# or 1/2" Dura Mulch with deposit at rate of 450#/Acre
- From the start of grading the contractor shall give 24 hour notice to the Howard County Soil Conservation District of the Howard County Forestry Division, Inspection and Control.
- All earthwork shall be stabilized immediately after construction and seeded with annual grass at the rate of 1#/1000#.
- All dikes and drainage systems shall be stabilized immediately after construction of same. See Supplemental Seeding List.



- SEQUENCE OF CONSTRUCTION**
- Clear, grub and strip area required for the construction of Sediment Trap No. 1.
  - Construct Sediment Trap No. 1 at location specified on plan and stabilize immediately after completion.
  - Stock soil from excavation of Sediment trap shall be stockpiled where designated by the Owner. Stabilize block soils immediately after completion.
  - Construct Straw Bale Dikes as shown on plans.
  - Construct Storm Drain System and cap inlet I-2.
  - Remove temporary sediment trap after construction site is complete and ground cover is established in the contributing drainage areas.
  - Upon removal of sediment trap extend storm drain to conform with location of outfall as shown on Site Development Plan.

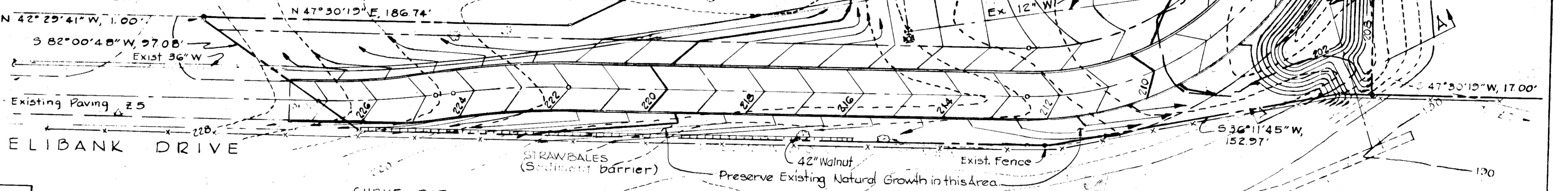


**PERMANENT SEEDING**

- Rate 2000#/Ac agricultural ground limestone
- Fertilizer 1000#/Ac (10-10-10)
- Seeding 100#/Ac (3 1/2" x 1000#)
- 10% Kentucky Blue Grass
- 20% Kentucky 51" Fescue
- 50% Creeping Red Fescue
- 10% Ryegrass

**TEMPORARY SEDIMENT TRAP NO. 1**  
 Drainage Area 3.6 Ac  
 Disturbed Area 1.3 Ac  
 Volume Req'd 87.1 CY  
 Volume Avail. 117.5 CY  
 Size Trap 30'x35'x3'

**CURVE DATA**  
 PT. 5+64.34 to PT. 5+55.56  
 A = 20°00'00" T = 150.00'  
 R = 150.00' Chd = 212.13'  
 Arc = 235.62'  
 Chd. Brq = N 2°35'29" E



**CURVE DATA**  
 PC 0+00 to PT 0+59.90  
 A = 8°17'54" T = 30.00'  
 R = 413.54' Chd = 59.84'  
 Arc = 59.90'  
 Chd Brq = N 43°21'22" E

**CURVE DATA**  
 PC 0+69.19 to PT +29.07  
 A = 8°17'54" T = 30.00'  
 R = 413.54' Chd = 59.84'  
 Arc = 59.90'  
 Chd Brq = N 43°21'22" E

**SITE PLAN**  
 Scale: 1" = 30'

*Hennett & Melrod*  
 APPROVED  
 DIVISION OF LAND DEVELOPMENT  
 AND TRANSPORTATION PLANNING  
 HOWARD COUNTY, MARYLAND  
 DATE 9-24-73

Reviewed for Howard SCD  
 and meets technical requirements.  
*C. Wayne Ray* 12-14-75  
 Signature Date

U.S. Soil Conservation Service

THIS DEVELOPMENT PLAN IS APPROVED FOR SOIL EROSION AND SEDIMENT CONTROL BY THE HOWARD SOIL CONSERVATION DISTRICT.

*Robert W. Johnson* 10/14/75  
 APPROVED HOWARD SCD DATE

APPROVED FOR STORM DRAINAGE SYSTEMS AND ROADS HOWARD COUNTY DEPARTMENT OF PUBLIC WORKS

*W. O. Liberty* 10-22-75  
 DIRECTOR DATE

*J. H. Arden* 10/20/75  
 CHIEF, BUREAU OF HIGHWAYS DATE

APPROVED HOWARD COUNTY OFFICE OF PLANNING AND ZONING

*James L. Harris* 10-23-75  
 PLANNING DIRECTOR DATE

*J. H. Clawson* 10/23/75  
 CHIEF, DIVISION OF LAND DEVELOPMENT AND TRANSPORTATION PLANNING DATE

CERTIFICATION BY THE ENGINEER  
 "I certify that this plan for Erosion and Sediment Control represents a practical and workable plan based on my personal knowledge of the site condition and it was prepared in accordance with the requirements of the Howard Soil Conservation District."

*Hennett & Melrod* 7-13-75  
 Signature by Engineer Date

CERTIFICATION BY THE DEVELOPER  
 "I certify that all development and/or construction will be done according to these Plans of Development and Plans for Erosion and Sediment Control and I also authorize periodic on-site inspection by the Howard Soil Conservation District or their authorized agents as are deemed necessary. Deviation from this plan will not be made unless authorized by the Howard Soil Conservation District."

*William A. Altman* 2/14/75  
 Signature of Developer Date

**SEDIMENT CONTROL PLAN**  
 FOR  
 ELKBRIDGE WATER PUMPING STATION  
 HOWARD COUNTY, MARYLAND  
 OWNER AND DEVELOPER  
 CONTRACT No. 399 W.  
 ELECTION DISTRICT NO. 1  
 HOWARD COUNTY, MARYLAND

DATE: JANUARY 18, 1975  
 OCTOBER 5, 1975  
 SCALE: AS SHOWN

**GENERAL NOTES**

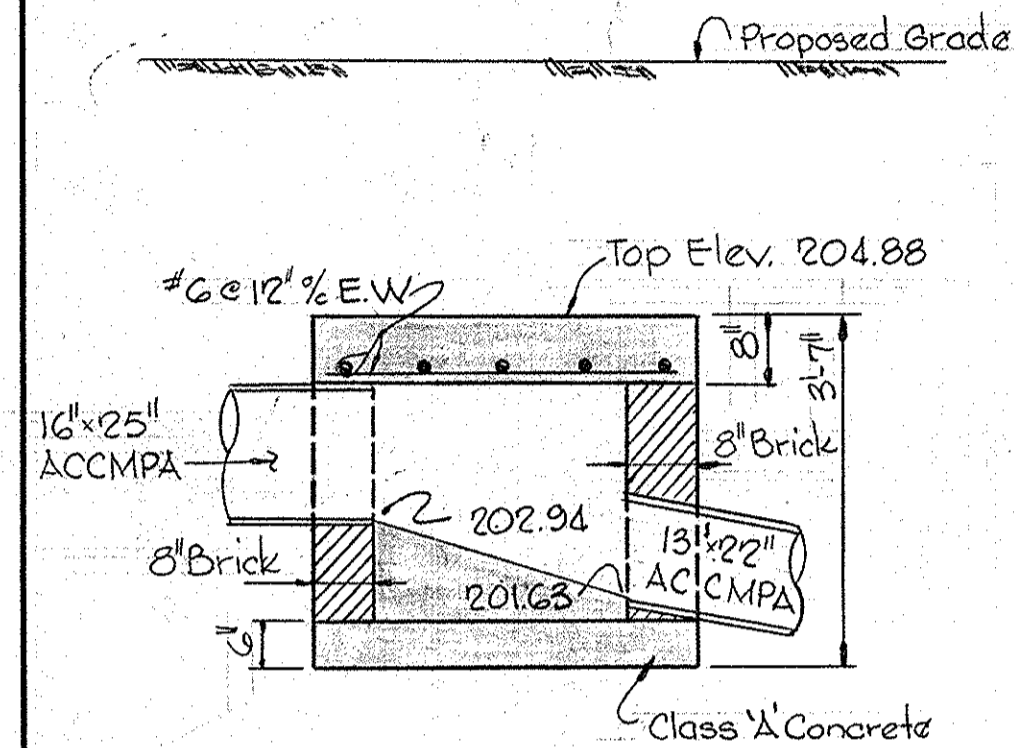
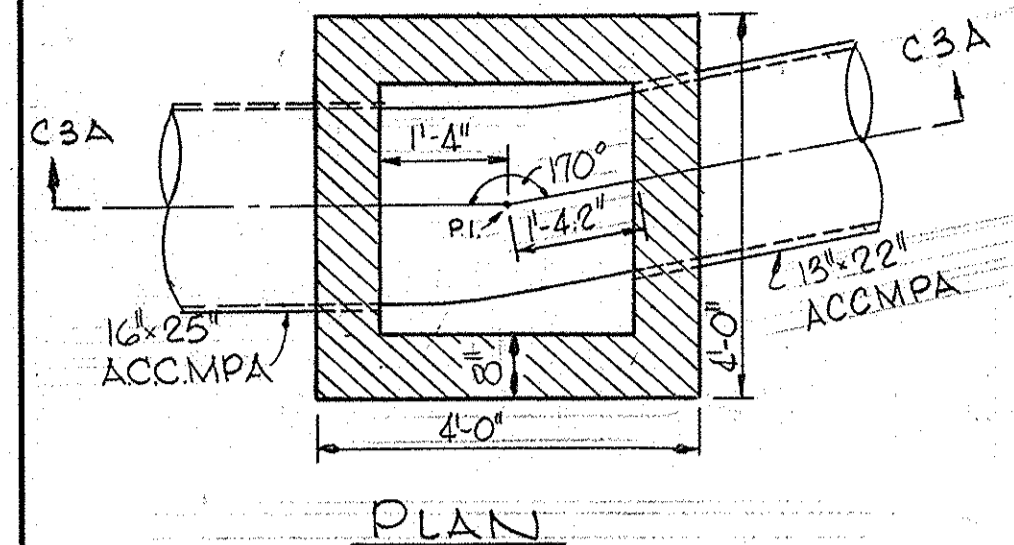
- Approximate location of existing main are shown. The Contractor shall take all necessary precautions to protect existing mains and services and maintain uninterrupted supply. Any damage incurred shall be repaired immediately.
- All pipe elevation shown are invert elevations except as otherwise noted.
- The contractor shall locate existing utilities a minimum of two weeks in advance of construction operations in vicinity of utilities.
- For all standard details see standards bound in Specifications.
- All horizontal and vertical controls are based on Maryland Datum.
- Drawings C-1 and C-2 were prepared as required by Howard County Planning and Zoning, and are a part of this contract. All site development and erosion control work shall be performed in accordance with these drawings.
- Logs of Borings are included in Specifications.

**PLANT LIST**

CODE	NAME	SIZE	QUANTITY
①	CORNUS FLORIDA - WHITE DOGWOOD	5'-6" HT	3
②	QUERCUS PALUSTRIS - PIN OAK	6'-8" HT	6
③	PINUS NIGRA - AUSTRIAN PINE	5'-6" HT	9
④	PINUS STROBUS - WHITE PINE	5'-6" HT	3
⑤	TSUGA CANADENSIS - CANADIAN HEMLOCK	5'-6" HT	8
⑥	MYRICA PENNSYLVANICA - NORTH BAYBERRY	3'-4" HT	10
⑦	PYRACANTHALANDI - ORANGE FIRETHORN	3'-4" HT	5
⑧	VINCA MINOR - PERIWINKLE	**	6500
⑨	VIBURNUM AMERICANUM - CRANBERRY BUSH	3'-4" HT	5

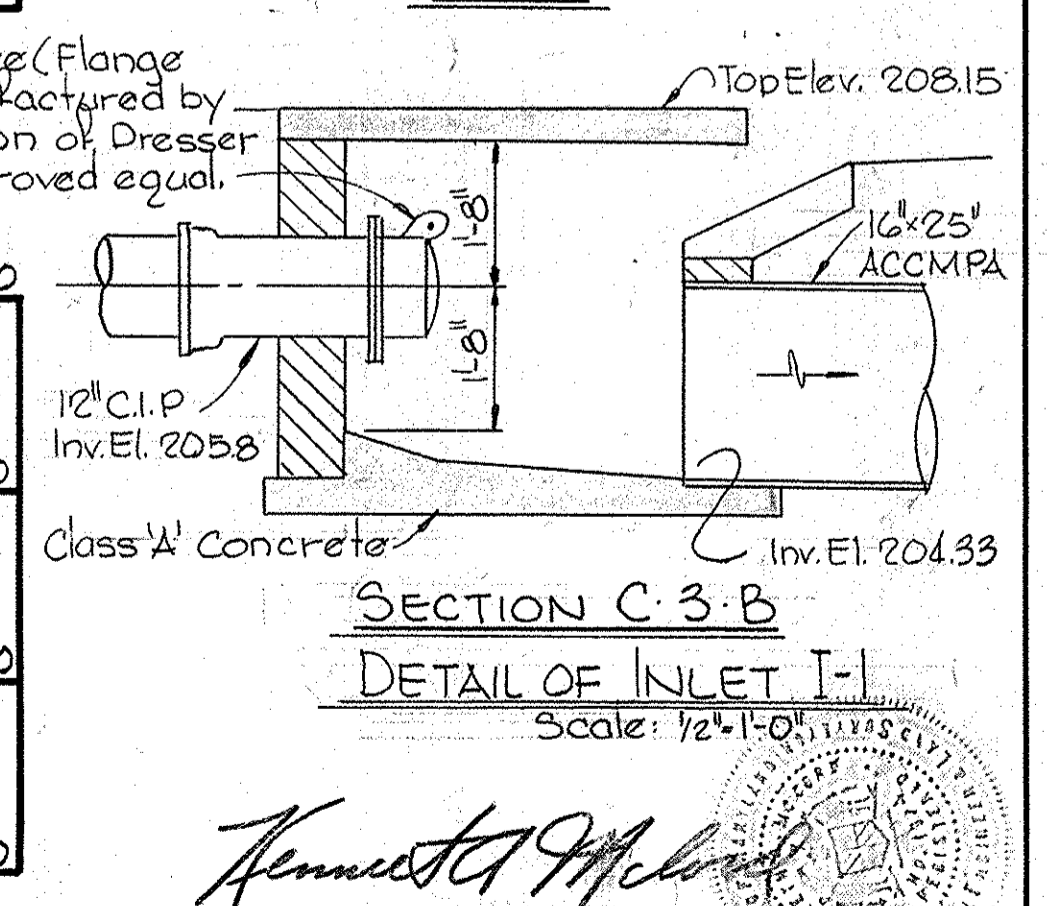
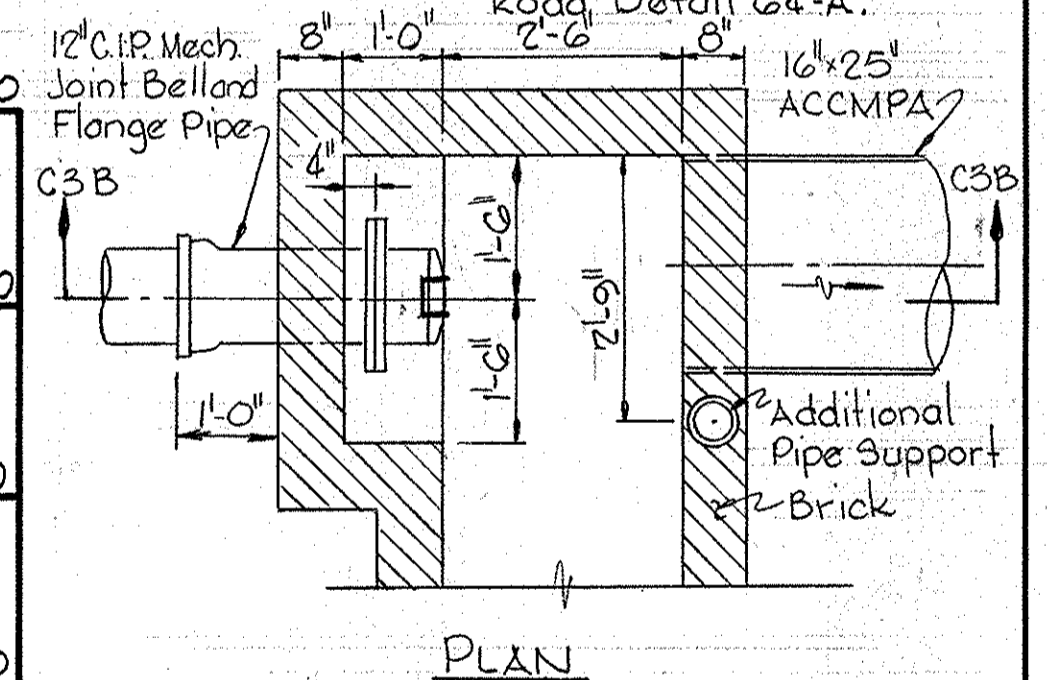
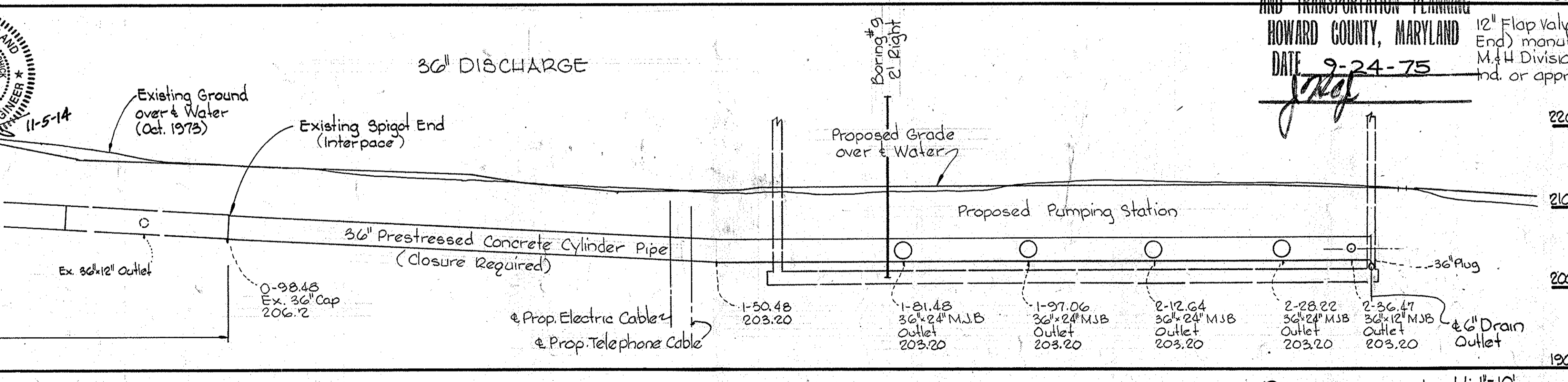
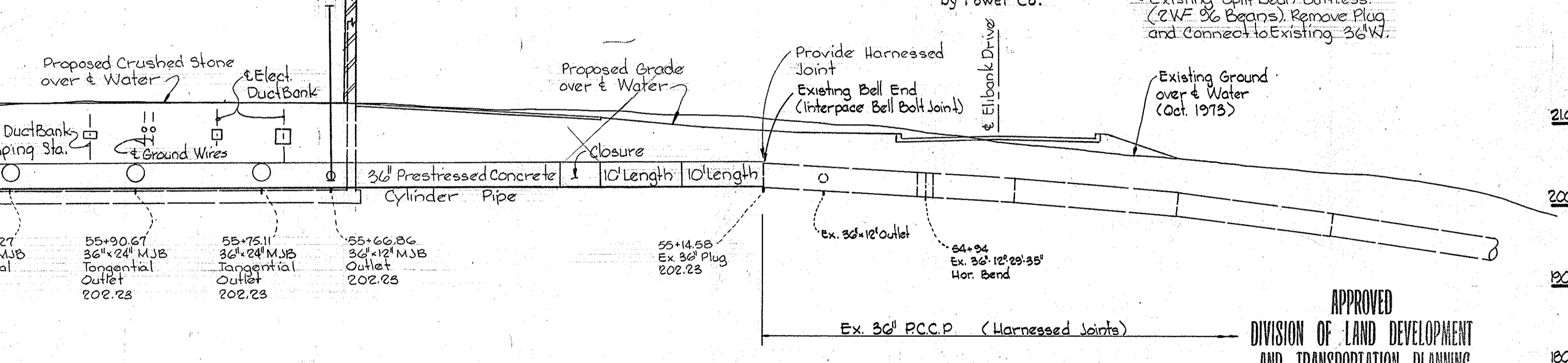
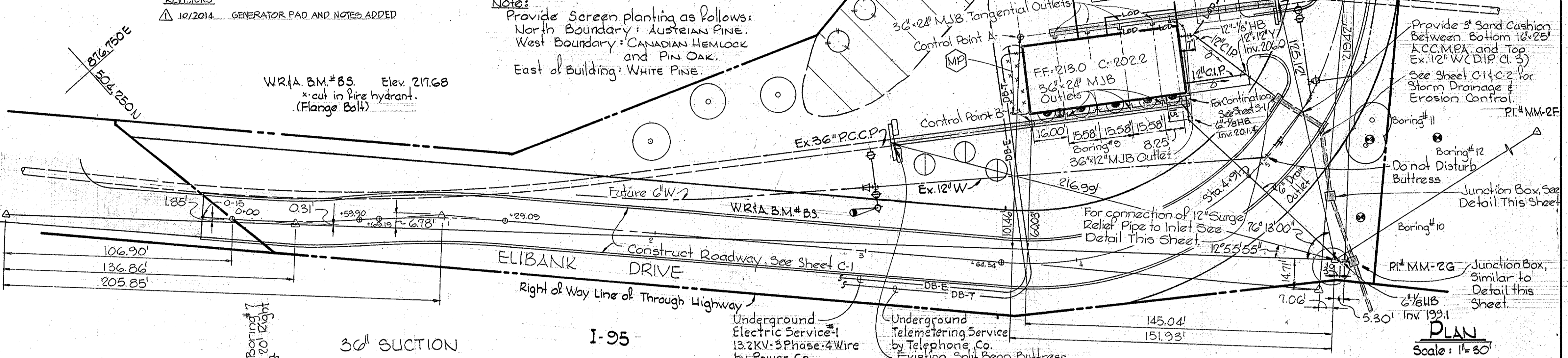
\* Plants are field grown in 1-gallon containers, and staked (single) after planting.  
 \*\* Plants are field grown in 2 1/4" pots/containers with a minimum of 5 runners.

**Note:**  
 Provide Screen planting as follows:  
 North Boundary: AUSTRIAN PINE.  
 West Boundary: CANADIAN HEMLOCK and PIN OAK.  
 East of Building: WHITE PINE.



**DETAIL JUNCTION BOX**  
 Scale: 1/2" = 1'-0"

APPROVED: HOWARD COUNTY OFFICE OF PLANNING AND ZONING  
 Director: *James A. Harmon* 10-23-75  
 Chief, Division of Land Development and Transportation Planning  
 APPROVED: FOR PUBLIC WATER, PUBLIC SEWERAGE AND STORM DRAINAGE SYSTEMS AND ROADS.  
 HOWARD COUNTY DEPARTMENT OF PUBLIC WORKS  
 Director: *W. O. Palbert* 10-22-75  
 Chief, Bureau of Highways



APPROVED  
 DIVISION OF LAND DEVELOPMENT  
 AND TRANSPORTATION PLANNING  
 HOWARD COUNTY, MARYLAND  
 DATE 9-24-75

PROFILES Scale: H: 1" = 10'  
 V: 1" = 10'

WHITMAN, REQUARDT & ASSOCIATES  
 ENGINEERS  
 1304 ST. PAUL ST.  
 BALTIMORE, MARYLAND

DEPARTMENT OF PUBLIC WORKS  
 HOWARD COUNTY, MARYLAND  
 10-22-75  
 W. O. Palbert  
 CHIEF-BUREAU OF ENGINEERING

CONTRACT NO. 399-W

LANDSCAPING PLAN

ELKRIDGE WATER PUMPING STATION

DRAWING NO. OF 3 AS SHOWN  
 SCALE AS SHOWN

OCTOBER 5, 1975 FB# 4312

SHEET 3 OF 3

SDP-75-73