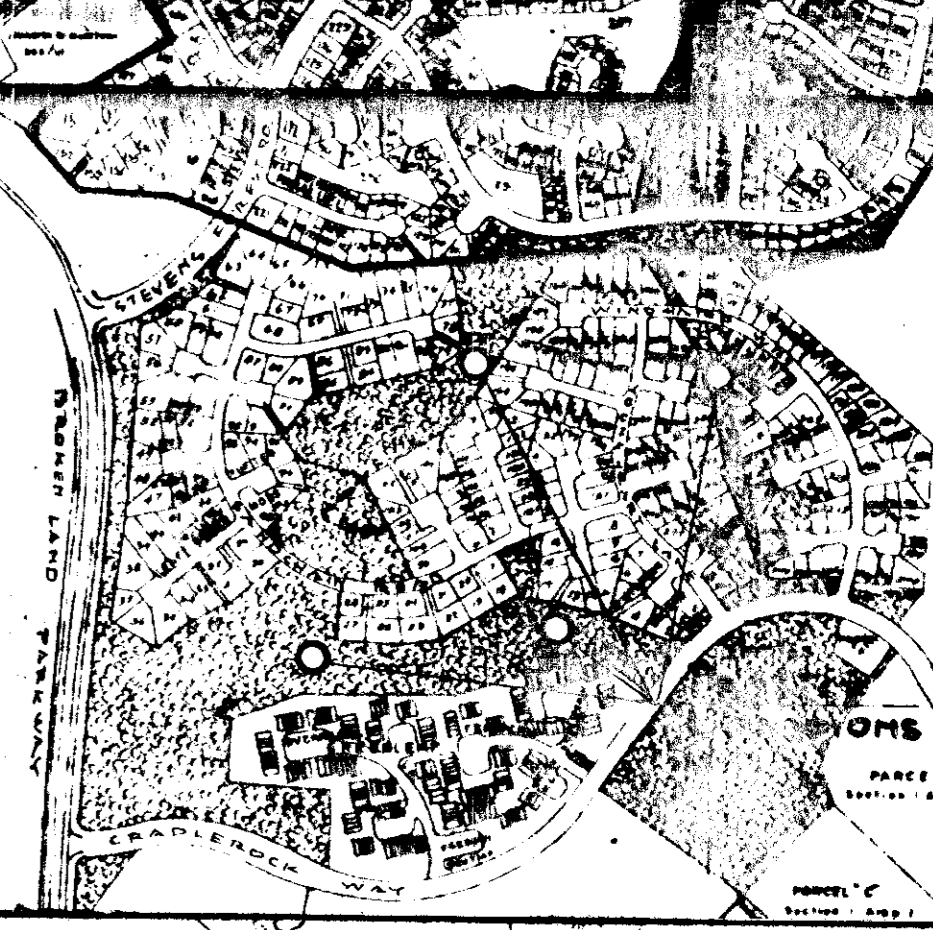


REVISED 1-20-75

B.B. & E. R/W. 100'-0"

BROADWAY PARKWAY LAND



VICINITY MAP SCALE: 1"=500'

NOTE

100 YR FLOOD PLAIN LIMITS TAKEN FROM STUDY PREPARED BY WHITMAN REOUARDT & ASSOCIATES JANUARY 1973 EXHIBIT NO. 2 STREAMS A & B SCALE 1"=100'-0"

PROPOSED TOT LOT LOCATION NO. 1

PROPOSED TOT LOT LOCATION NO. 2

PROPOSED TOT LOT LOCATION NO. 4

PROPOSED TOT LOT LOCATION NO. 3

LOT 270
OPEN SPACE
12.490 AC.
LIBER 23
FOLIO 25

LOT 268
OPEN SPACE
2.870 AC

LOT 267
OPEN SPACE
0.768 AC

LOT 271
OPEN SPACE
31.112 AC

OPEN SPACE
LOT 271
31.112 AC
LIBER 23
FOLIO 28

OPEN SPACE LOTS 270, 268, 271
LOT AREA NOTED

VILLAGE OF OWEN BROWN
SECTION I AREA 1
ELECTION DISTRICT 6A
HOWARD COUNTY MARYLAND
TAX MAP NO. 36
LIBER 23
FOLIO NOTED

PARCEL "A" 22.365 Ac

LOT 5 (2)
OPEN SPACE
2.247 AC

APPROVED: HOWARD COUNTY OFFICE OF PLANNING AND ZONING

PLANNING DIRECTOR: [Signature] DATE: 2/24/75

CHIEF, DIVISION OF LAND DEVELOPMENT AND TRANSPORTATION PLANNING DATE: 2/24/75

APPROVED: STORM DRAINAGE SYSTEMS AND ROADS

HOWARD COUNTY DEPARTMENT OF PUBLIC WORKS

DIRECTOR: [Signature] DATE: 2/24/75

CHIEF, BUREAU OF HIGHWAYS DATE: 2/24/75

REVIEWED FOR HOWARD COUNTY AND MEETS TECHNICAL REQUIREMENTS

STIGATOR: [Signature] DATE: 2/24/75

U.S. SOIL CONSERVATION SERVICE DATE: 2/24/75

THIS DEVELOPMENT PLAN IS APPROVED FOR SOIL EROSION AND SEDIMENT CONTROL BY THE HOWARD COUNTY DISTRICT

APPROVED: [Signature] DATE: 2/24/75

ARCHITECTS STAMP

2857-R

STATE OF MARYLAND

OWNER

COLUMBIA PARK & REC. ASSN.
1000 CENTURY PLAZA
10630 LITTLE PATUXENT PARK
COLUMBIA MD. 21044-1306100

COLUMBIA MARYLAND ASSOCIATION

COLUMBIA ASSOCIATION

PROJECT TITLE: WASHNER GREEN TOT LOTS
VILLAGE OF OWEN BROWN, SECTION I, AREA 1 LOTS 270, 268, & 271

SUBJECT: SITE DEVELOPMENT PLAN

SCALE: 1"=100'

DATE: 9-15-74

DWG. NO. 1 PARCEL "B"

OF 5 10.640 AC

CAENO

S.D.P. 75-48-C

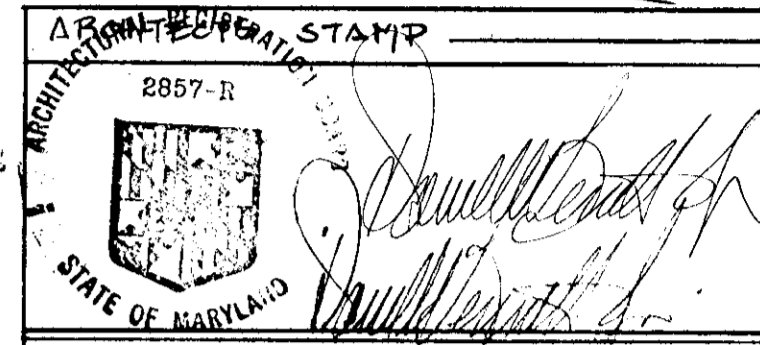
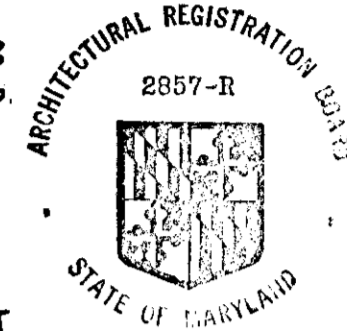
LOT 119

LOT 118

LOT 107

LOT 106

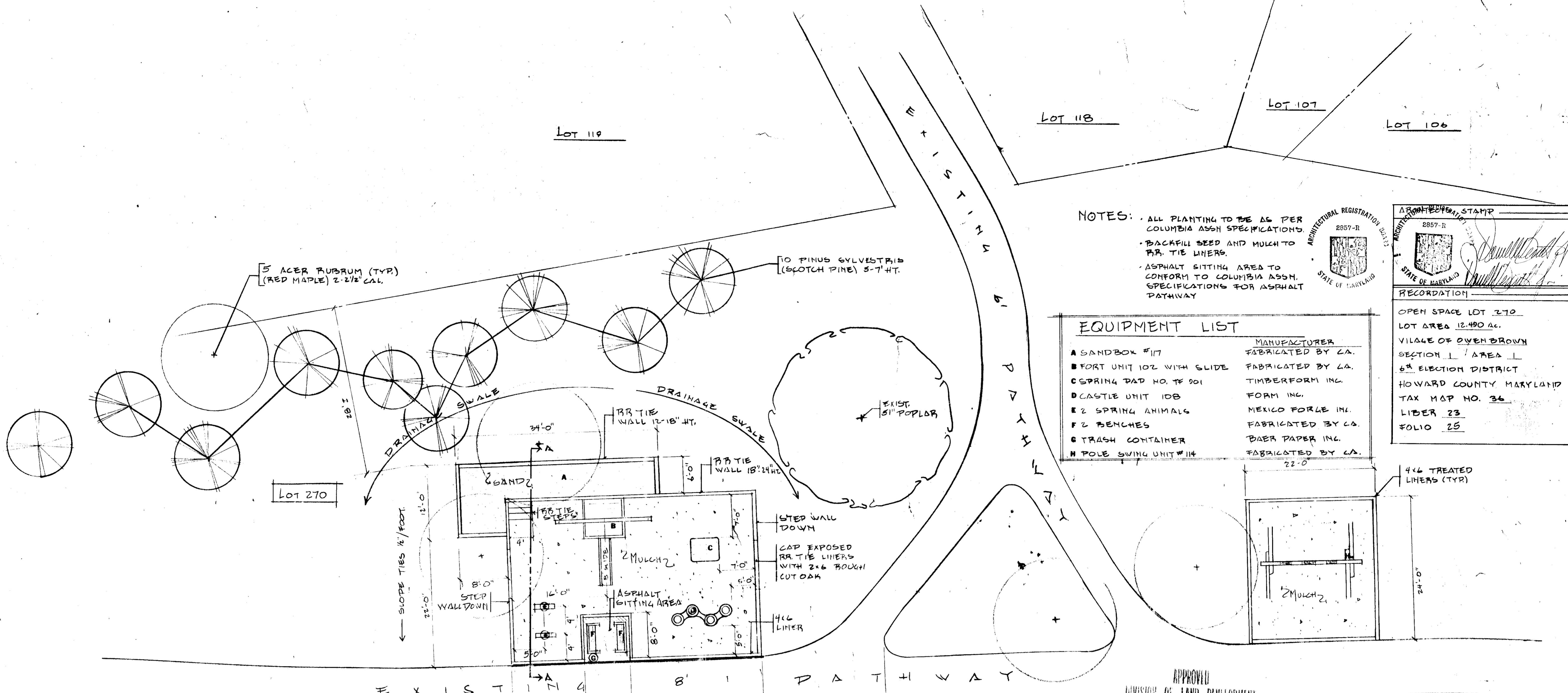
NOTES: ALL PLANTING TO BE AS PER COLUMBIA ASSH SPECIFICATIONS.
 BACKFILL SEED AND MULCH TO RR TIE LINERS.
 ASPHALT SITTING AREA TO CONFORM TO COLUMBIA ASSH SPECIFICATIONS FOR ASPHALT PATHWAY



RECORDATION
 OPEN SPACE LOT 270
 LOT AREA 12.490 AC.
 VILAGE OF OWEN BROWN
 SECTION 1 AREA 1
 6th ELECTION DISTRICT
 HOWARD COUNTY MARYLAND
 TAX MAP NO. 36
 LIBER 23
 FOLIO 25

EQUIPMENT LIST

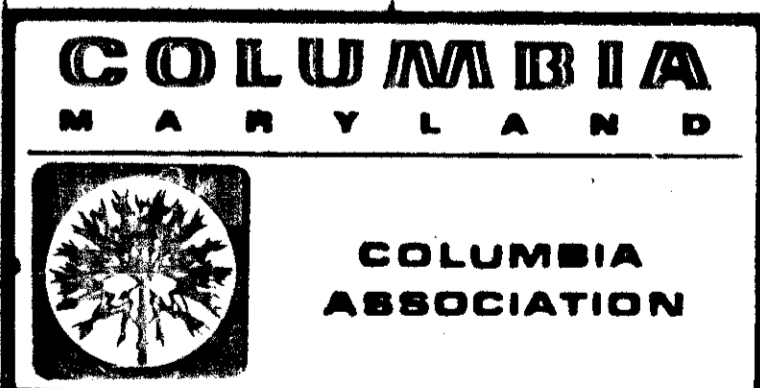
MANUFACTURER	MANUFACTURER
A SANDBOX #17	FABRICATED BY C.A.
B FORT UNIT 102 WITH SLIDE	FABRICATED BY C.A.
C SPRING PAD NO. TF 001	TIMBERFORM INC.
D CASTLE UNIT 10B	FORM INC.
E 2 SPRING ANIMALS	MEXICO FORGE INC.
F 2 BENCHES	FABRICATED BY C.A.
G TRASH CONTAINER	BAER PAPER INC.
H POLE SWING UNIT #114	FABRICATED BY C.A.



APPROVED
 DIVISION OF LAND DEVELOPMENT
 AND TRANSPORTATION PLANNING
 HOWARD COUNTY, MARYLAND
 DATE 12/26/74

NOTE
 THIS TOT LOT IS NOT LOCATED WITHIN THE LIMITS OF THE 100 YR FLOOD PLAIN

OWNER
 COLUMBIA PARK AND REC. ASSH.
 10630 LITTLE PATUKENT PARKWAY
 1000 CENTURY PLAZA
 COLUMBIA MD. 21044 730-6100

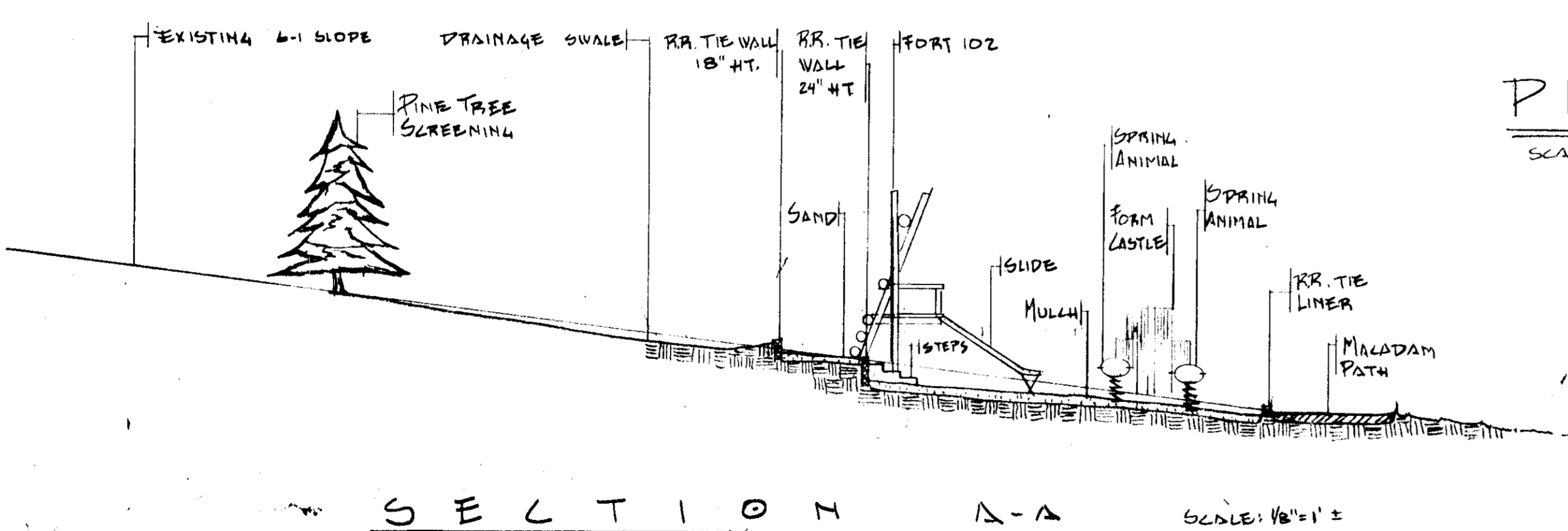


PROJECT TITLE: BARFOOT BOY TOT LOT
 VILAGE OF OWEN BROWN
 SECTION 1 AREA 1 LOT 270
 SUBJECT: PLAN AND DETAILS FOR LOCATION #2

REVIEWED FOR HOWARD S.C.D. AND MEETS TECHNICAL REQUIREMENTS
 DATE 2/19/75
 APPROVED HOWARD COUNTY OFFICE OF PLANNING/ZONING
 DATE 2/21/75
 APPROVED HOWARD COUNTY DEPARTMENT OF PUBLIC WORKS
 DATE 2/27/75
 APPROVED STATE DEPARTMENT OF TRANSPORTATION PLANNING
 DATE 2/28/75

PLAN
 SCALE: 1/8"=1'-0"

SECTION A-A
 SCALE: 1/8"=1'-0"



SCALE	1/8"=1'-0"	DWG. NO.	
DATE	12-30-74		2
DES. BY	D.E.		
DWN. BY	D.E.		
CHK. BY			OF 5
APP. BY			CAF NO.

Lot 237

Lot 236

Lot 230

WOODED 2

EQUIPMENT LIST	
	MANUFACTURER
A SPRING PAD TP 801	TRIMPERFORM INC.
B FORT 102 WITH SLIDE	FABRICATED BY C.A. FORM INC.
C FORM CASTLE UNIT 109	MEXICO FORGE INC.
D 3- SPRING ANIMALS	FABRICATED BY C.A. FORM INC.
E POLE TEE PEE UNIT 105	FABRICATED BY C.A. FORM INC.
F POLE SWING UNIT 114	FABRICATED BY C.A. FORM INC.
G 2 BENCHES	FABRICATED BY C.A. FORM INC.
H TRASH CONTAINER	BAER PAPER INC.
I 2 PICNIC TABLES	FABRICATED BY C.A. FORM INC.

OPEN SPACE
LOT 268

EXISTING 4' 8" PATHWAY

PLANTING MOUND - +2'-6" ELEV.

EXISTING 6" ASPHALT CURB TO HOLD SAND

Lot 241

PLANT LIST			
SYMBOL	NAME	SIZE	QUAN.
+	ACER RUBRUM (RED MAPLE)	3 1/2 - 4" CAL.	1
•	ACER RUBRUM (RED MAPLE)	2 1/2 - 3" CAL.	5
○	ACER GINALE (AMUR MAPLE)	8 - 10' HT.	1
⊗	PINUS SYLVESTRIS (SCOTCH PINE)	4 - 7' HT.	18

Lot 242

NORTH

PLAN

SCALE: 1/8" = 1'-0"

NOTE:
ALL DISTURBED AREAS TO BE SEEDED ACCORDING TO COLUMBIA ASSN. SPECIFICATIONS.
ALL PLANTING TO BE AS PER COLUMBIA ASSN. SPECIFICATIONS.
BACHEL SEED AND MULCH TO 4" LAYERS

NOTE:
THIS TOT LOT IS NOT LOCATED WITHIN THE LIMITS OF THE 100 YR FLOOD PLAIN

ARCHITECTS STAMP
ARCHITECTURAL REGISTRATION DISTRICT
2857-R
STATE OF MARYLAND

RECORDATION
OPEN SPACE LOT 268
LOT AREA 2870 AC.
VILLAGE OF OWEN BROWN
SECTION 1 AREA 1
6th ELECTION DISTRICT
HOWARD CO. MARYLAND
TAX MAP NO. 36
LIBER 23
FOLIO 30

OWNER
COLUMBIA PARK & REC ASSN.
10630 LITTLE PATUENT PARKWAY
COLUMBIA MD. 21044 730-6100

COLUMBIA MARYLAND

COLUMBIA ASSOCIATION

PROJECT TITLE: RISING MOON TOT LOT
VILLAGE OF OWEN BROWN
SECTION 1 AREA 1 LOT 268
SUBJECT: PLAN AND DETAILS
FOR LOCATION NO. 2

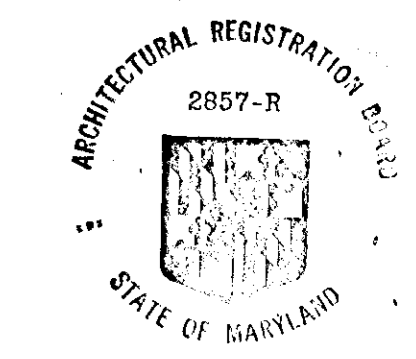
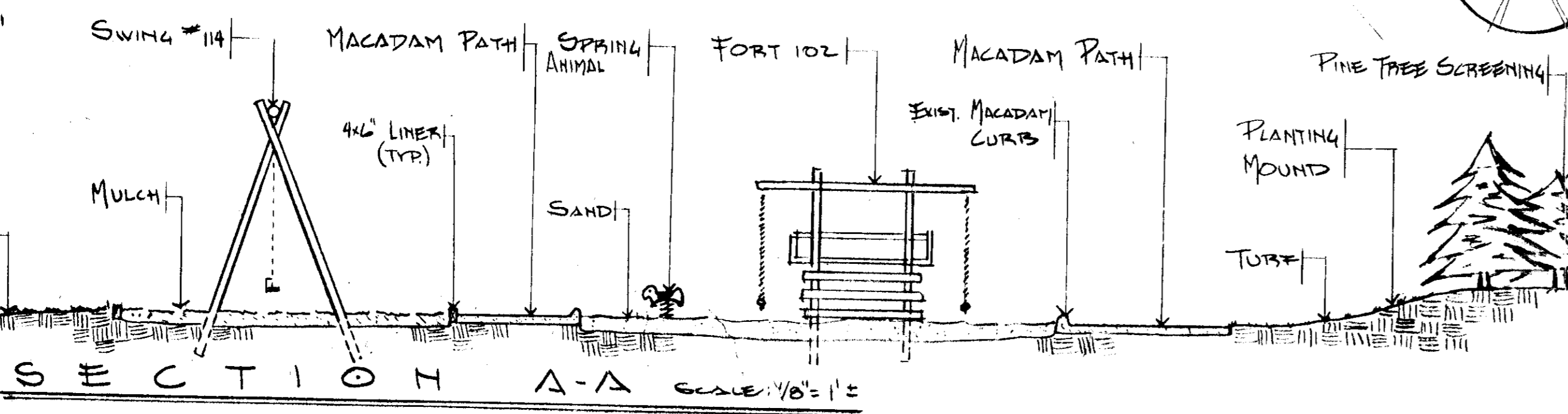
SCALE	1/8" = 1'-0"	DWG. NO.	
DATE	10-27-74		3
DES. BY	DE		
DWN. BY	DE		
CK. BY		OF	5
APP. BY		CAF NO.	

APPROVED: HOWARD COUNTY OFFICE OF PLANNING AND ZONING
PLANNING DIRECTOR: *St. Hanley* DATE: 2-27-75
CHIEF, DIVISION OF LAND DEVELOPMENT AND TRANSPORTATION PLANNING: *Blair* DATE: 2/28/75

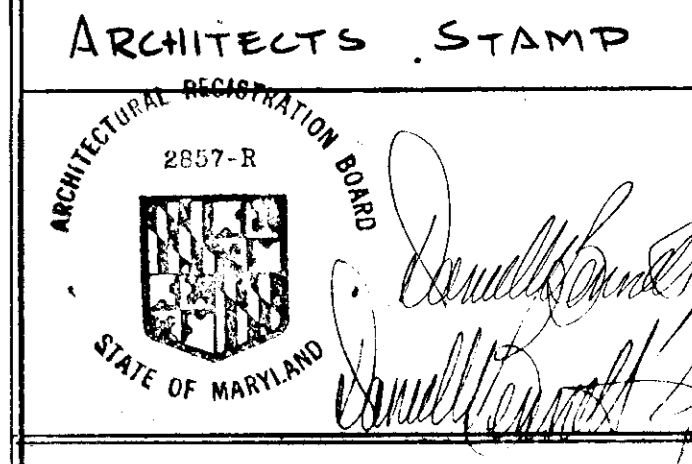
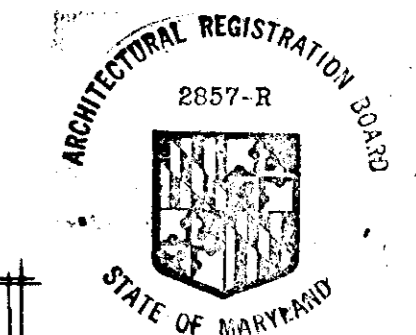
APPROVED: STORM DRAINAGE SYSTEMS AND LOADS
HOWARD COUNTY DEPARTMENT OF PUBLIC WORKS
DIRECTOR: *W. A. Altman* DATE: 2/27/75
CHIEF, BUREAU OF HIGHWAYS: *R. M. McKeel* DATE: 2/24/75

APPROVED FOR HOWARD S.C.D. AND MEETS TECHNICAL REQUIREMENTS
S.C.D. SOIL CONSERVATION SERVICE: *James McKeel* DATE: 2-11-75

THIS DEVELOPMENT PLAN IS APPROVED FOR SOIL EROSION AND SEDIMENT CONTROL BY THE HOWARD SOIL CONSERVATION DISTRICT
APPROVED: *Robert Fisher* DATE: 2-11-75
HOWARD S.C.D.



REVISED: 1-20-75



NOTE
THIS TOT LOT IS NOT LOCATED WITHIN THE LIMIT OF THE 100 YR FLOOD PLAIN AS SHOWN ON THE SITE PLAN, SHEET 1 OF 5.

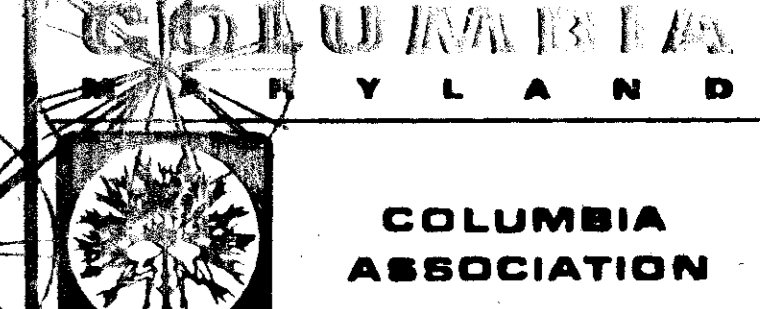
RECORDATION
OPEN SPACE LOT 271
LOT AREA 21,112 AC.
VILLAGE OF OWEN BROWN
SECTION 1
AREA 1
ELECTION DISTRICT 6th
HOWARD COUNTY MD.
TAX MAP NO 36
LIBER 23
FOLIO 27 SHEET 5 OF 14

OWNER
COLUMBIA PARK AND REC ASSN.
1000 CENTURY PLAZA
10630 LITTLE PATUXENT PARKWAY
COLUMBIA MD 21044 739-6100

EQUIPMENT	MANUFACTURER
A POLE SWING #114 (2 V.P. 1 BUCKET SEAT)	FABRICATED BY CA.
B FORT #TF-101 WITH SLIDE	FABRICATED BY CA.
C SPRING PAD #TF 901	TIMBERFORM INC.
D FORM CASTLE #108	FORM INC.
E TIRE TREE #106	FABRICATED BY CA.
F BALANCE LOGS	FABRICATED BY CA.
G TIRE CRAWL #118	FABRICATED BY CA.
H 3 SPRING ANIMALS	MEXICO FORCE INC.
I PICNIC TABLE	FABRICATED BY CA.
J TRASH BASKET	BAER PAPER INC.
K BENCH	FABRICATED BY CA.

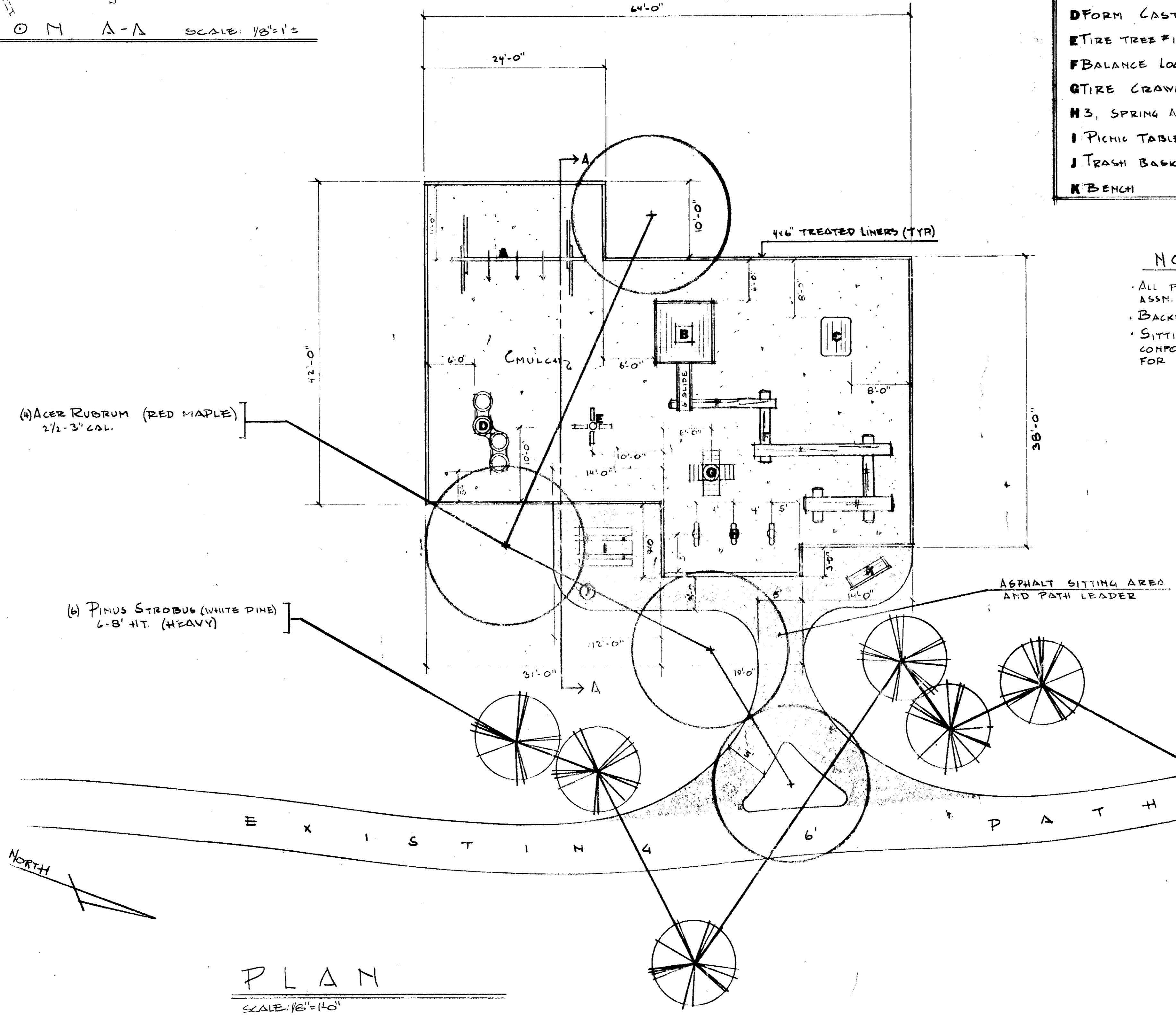
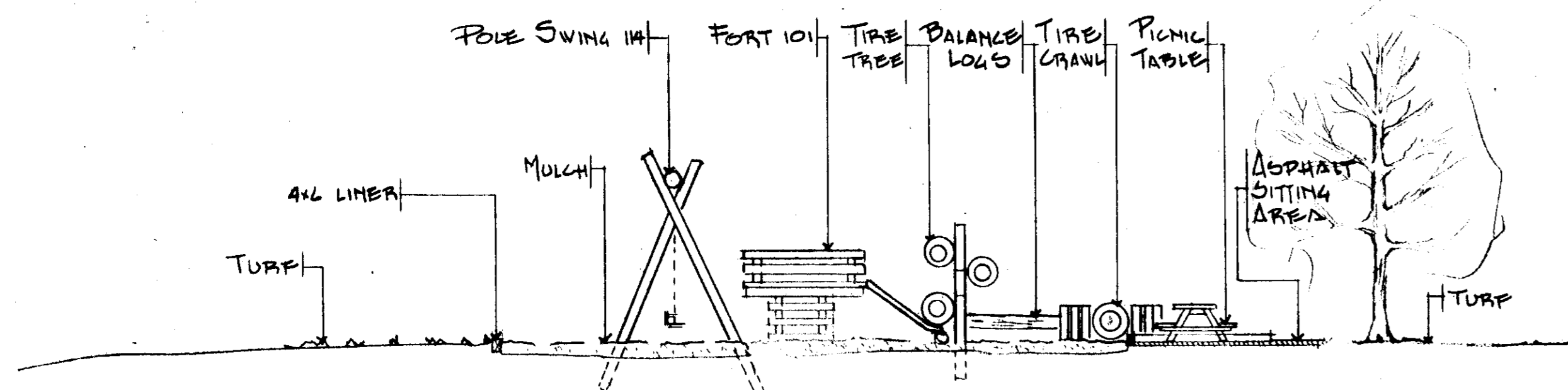
NOTE:
ALL PLANTING TO BE AS PER COLUMBIA ASSN. SPECIFICATIONS
BACKFILL SEED AND MULCH TO ALL LINERS
SITTING AREA AND PATH LEADER TO CONFORM TO COLUMBIA ASSN. SPECS. FOR ASPHALT PATHWAY

APPROVED: HOWARD COUNTY OFFICE OF PLANNING AND ZONING
PLANNING DIRECTOR: *[Signature]* DATE: 12/28/74
CHIEF, DIVISION OF LAND DEVELOPMENT AND TRANSPORTATION PLANNING: *[Signature]* DATE: 1/2/75
APPROVED BY: *[Signature]* DATE: 1/2/75
DIRECTOR: *[Signature]* DATE: 1/2/75
REVIEWED BY: *[Signature]* DATE: 1/2/75
THIS DOCUMENT IS APPROVED FOR SOIL CONSERVATION AND EROSION CONTROL BY THE HOWARD COUNTY CONSERVATION DISTRICT
APPROVED: *[Signature]* DATE: 1/2/75



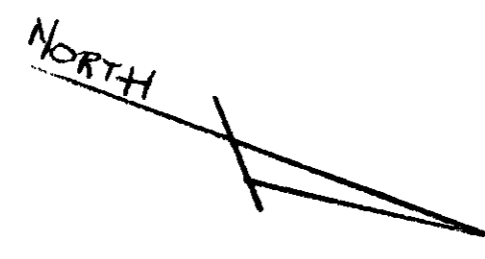
APPROVED
DIVISION OF LAND DEVELOPMENT
AND TRANSPORTATION PLANNING
HOWARD COUNTY, MARYLAND
DATE: 12/26/74

PROJECT TITLE: PLAY MEADOW TOT LOT	SCALE: 1/8" = 1'-0"	DWG. NO.:
VILLAGE OF OWEN BROWN	DATE: 9-15-74	4
SECTION 1 AREA 1 LOT 271	DES. BY: DE.	
SUBJECT: PLAN AND DETAILS FOR	DWN. BY: DE.	
LOCATION # 3	CK. BY: DE.	
	APP. BY:	OF 5
		CAF NO.



(a) ACER RUBRUM (RED MAPLE)
2 1/2 - 3' CAL.

(b) PINUS STROBUS (WHITE PINE)
6-8' HT. (HEAVY)



PLAN
SCALE: 1/8" = 1'-0"

APPROVED: HOWARD COUNTY OFFICE OF PLANNING AND ZONING
 J. Thomas L. Horner, Director
 APPROVED: STORM DRAINAGE SYSTEMS AND SEWERS
 HOWARD COUNTY DEPARTMENT OF PUBLIC WORKS
 DIRECTOR: W. L. Allen
 CHIEF, DEPARTMENT OF HIGHWAYS
 REVIEWED FOR HOWARD S.C.D. AND PEETS TECHNICAL SERVICES
 APPROVED: J. M. McLeod
 U.S. SOIL CONSERVATION SERVICE
 THIS DEVELOPMENT PLAN IS APPROVED FOR SOIL EROSION AND SEDIMENT CONTROL BY THE HOWARD SOIL CONSERVATION SERVICE
 APPROVED: J. M. McLeod
 HOWARD S.C.D.

PLANT MATERIAL

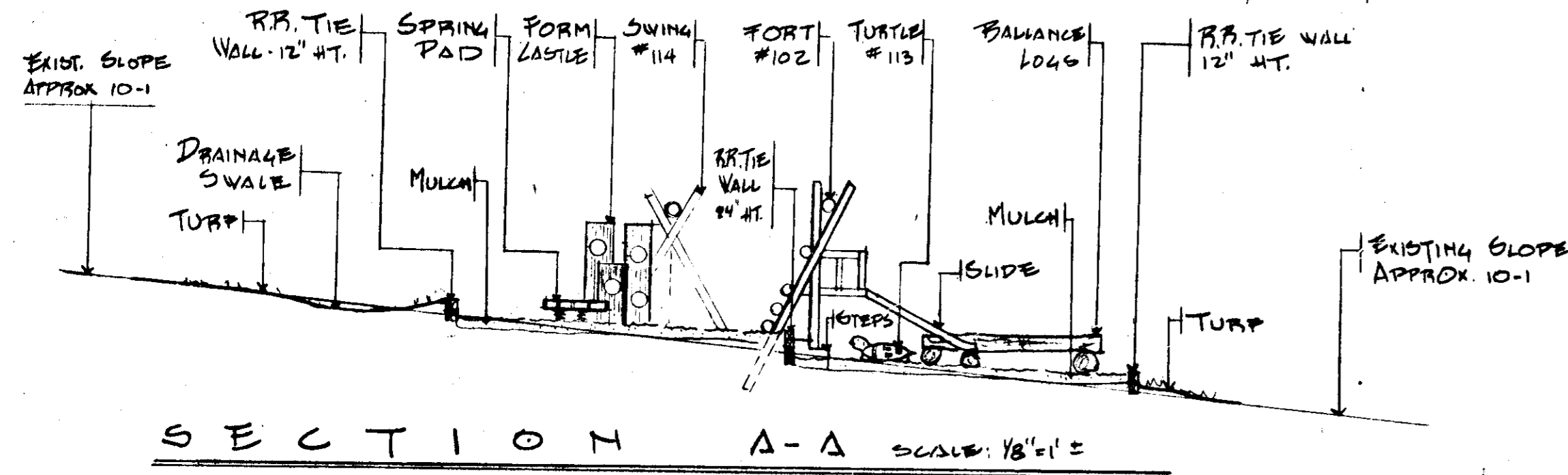
SYMBOL	NO. REQD.	NAME	SIZE
	10	PINUS NIGRA (AUSTRIAN PINE)	6-8' HT.
	3	PLATANUS x ACERFOLIA (LONDON PLANE)	2 1/2 - 3' CAL.

EQUIPMENT LIST:

- A BALANCE LOADS
- B SPRING PAD #TF 900
- C FORM CASTLE #10B
- D FORM TURTLE #113
- E SANDBOX UNIT #17
- F PLAY ROCKS
- G POLE SWING UNIT #14
- H 3 SPRING ANIMALS
- I FORT UNIT #102 WITH SLIDE
- J TRASH BASKET
- K BENCH

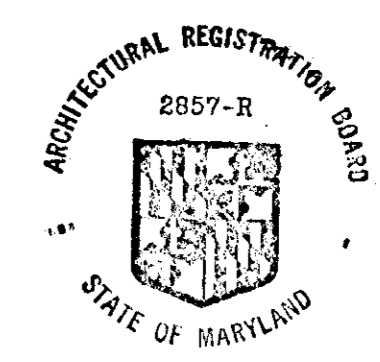
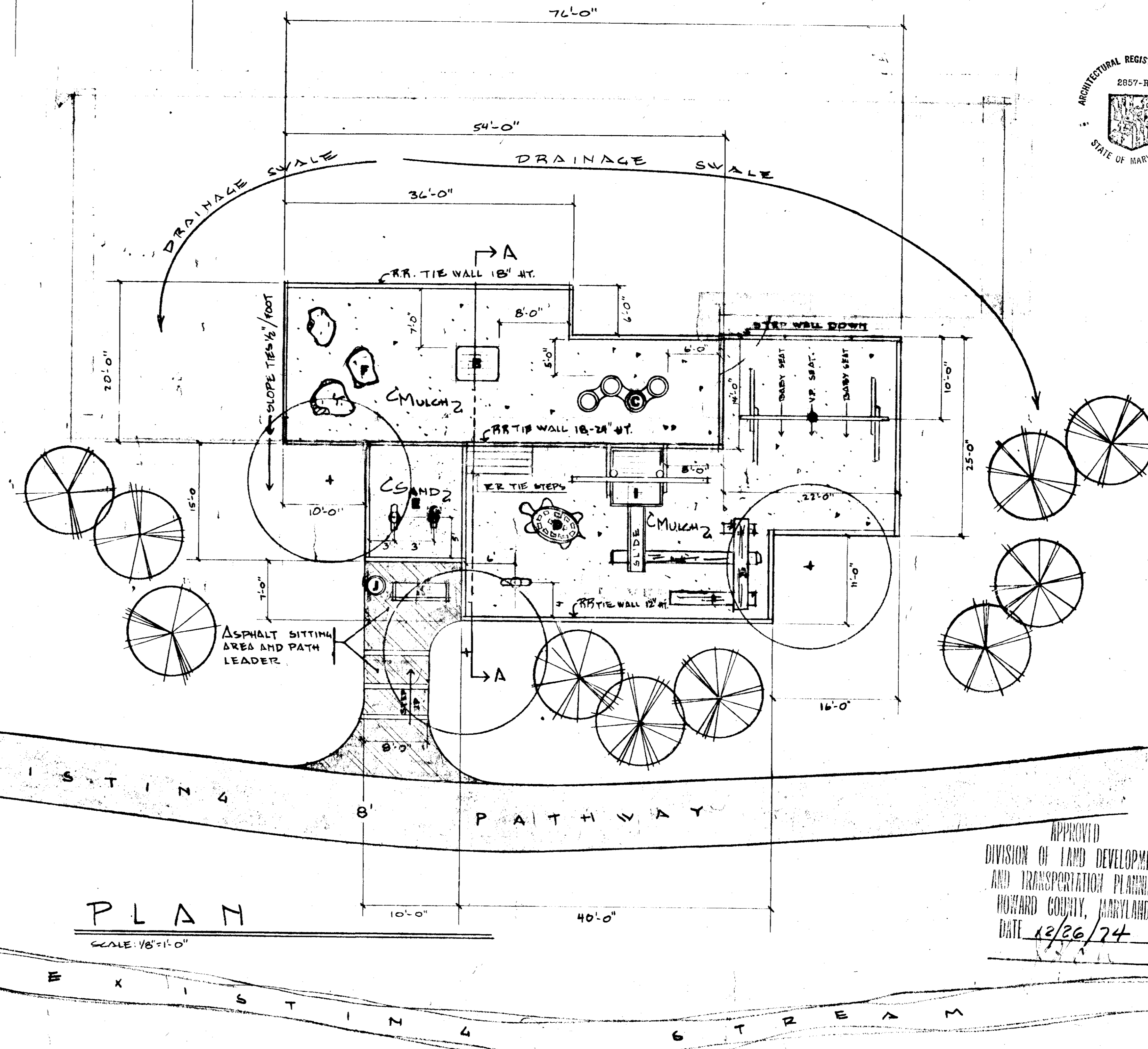
NOTES:

- BACKFILL SEED AND MULCH TO ALL LINERS.
- ALL PLANTING TO BE AS PER COLUMBIA ASSN. SPECIFICATIONS.
- SITTING AREA AND PATHWAY LEADER TO CONFORM TO COLUMBIA ASSN. SPECIFICATIONS FOR ASPHALT PATHWAY.
- LAP EXPOSED RR. TIE LINERS WITH 24" ROUGH CUT GRAV.



EQUIPMENT MANUFACTURER (SEE EQUIPMENT LIST)

EQUIP LETTER	MANUFACTURER
A	FABRICATED BY LA. TIMBERFORM INC.
B	FORM INC.
C	FORM INC.
D	FABRICATED BY LA. TIMBERFORM INC.
E	FABRICATED BY LA. MENICO FORGE.
F	FABRICATED BY LA. BAER PAPER INC.
G	FABRICATED BY LA.



ARCHITECTS STAMP
 ARCHITECTURAL REGISTRATION BOARD STATE OF MARYLAND
 2857-R
 [Signature]

NOTE
 THIS TOT LOT IS NOT LOCATED WITHIN THE LIMIT OF THE 100 YEAR FLOOD PLAIN AS SHOWN ON THE SITE PLAN SHEET 1 OF 5

RECORDATION
 OPEN SPACE LOT # 271
 OPEN SPACE LOT AREA 31122
 VILLAGE OF OWEN BROWN
 SECTION 1
 AREA 1
 2nd ELECTION DISTRICT
 HOWARD COUNTY, MD
 TAX MAP 3A
 LIBER 23 FOLIO 29
 SHEET 7 OF 16

OWNER
 COLUMBIA PARK AND REC. ASSN.
 1000 CENTURY PLAZA
 10630 LITTLE PATUENT PARK
 COLUMBIA MD 21044
 730-6100

COLUMBIA MARYLAND ASSOCIATION

PROJECT TITLE: VISHING BRIDGE TOT LOT VILLAGE OF OWEN BROWN SECTION 1 AREA 1 LOT 271
 SUBJECT: PLAN AND DETAILS FOR LOCATION #2 4

SCALE	1/8" = 1'-0"	DWG. NO.	
DATE	9-13-74		
DES. BY	DE		5
DWN. BY	DE		
CK. BY			OF 5
APP. BY			CAF NO.