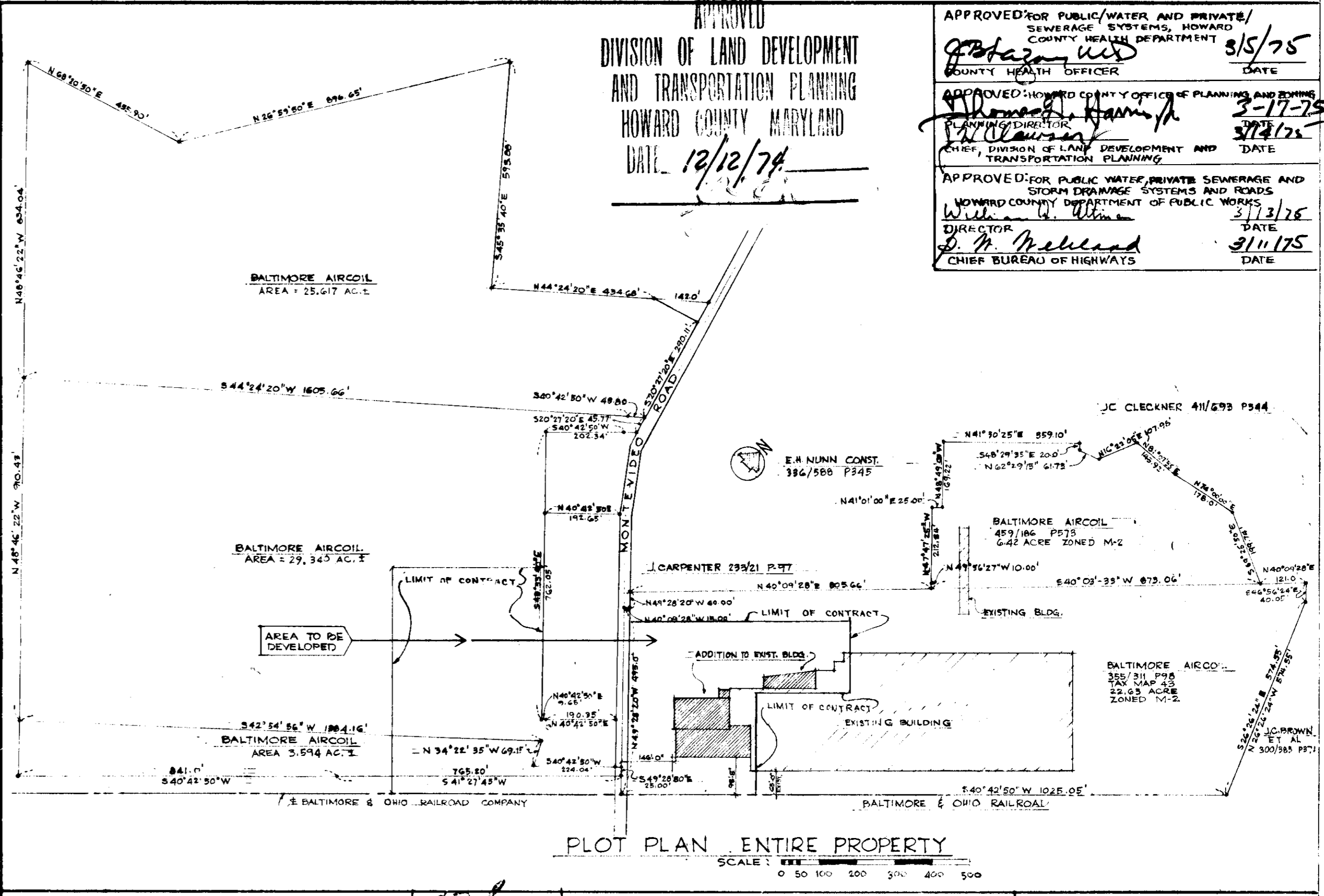


NOTES

PARKING REQUIREMENTS
 SPACES REQUIRED = 1 SPACE PER TWO EMPLOYEES
 EMPLOYEES = 250 PER SHIFT - MANUFACTURING
 OFFICE STAFF
 TOTAL = 500 EMPLOYEES
 PARKING SPACES REQUIRED = 250 = 275
 SPACES AVAILABLE = 2 = 300

AREA OF NEW CONSTRUCTION
 TESTING LAB. 13,542 SQ. FT.
 OFFICE 11,215 PER FLOOR 2 FLOORS TOTAL = 22,430 SQ. FT.
 RECEIVING = 8,538 SQ. FT.

SITE OF BUILDING ZONED M-2
 AREA OF SITE BEING DEVELOPED OR GRADED:
 NORTHEAST SIDE OF MONTEVIDEO ROAD 205,000 SQ. FT. = 4.60 ACRES
 SOUTHWEST SIDE OF MONTEVIDEO ROAD 240,000 SQ. FT. = 5.10 ACRES
 TOTAL NEW DEVELOPED AREA = 9.70 ACRES



APPROVED
 DIVISION OF LAND DEVELOPMENT
 AND TRANSPORTATION PLANNING
 HOWARD COUNTY MARYLAND
 DATE 12/12/74

APPROVED FOR PUBLIC WATER AND PRIVATE/SEWERAGE SYSTEMS, HOWARD COUNTY HEALTH DEPARTMENT
 COUNTY HEALTH OFFICER DATE 5/5/75

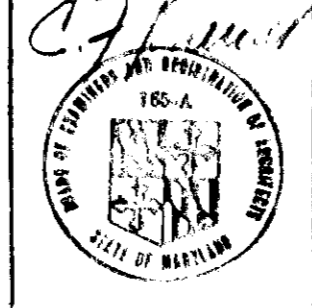
APPROVED FOR COUNTY OFFICE OF PLANNING AND ZONING
 COUNTY PLANNING AND ZONING OFFICER DATE 3-17-75

APPROVED FOR PUBLIC WATER, PRIVATE SEWERAGE AND STORM DRAINAGE SYSTEMS AND ROADS
 HOWARD COUNTY DEPARTMENT OF PUBLIC WORKS
 DIRECTOR DATE 3/13/76

APPROVED FOR PUBLIC WATER AND PRIVATE/SEWERAGE SYSTEMS, HOWARD COUNTY HEALTH DEPARTMENT
 COUNTY HEALTH OFFICER DATE 9/11/75

PLOT PLAN ENTIRE PROPERTY
 SCALE: 1" = 50' 100' 200' 300' 400' 500'

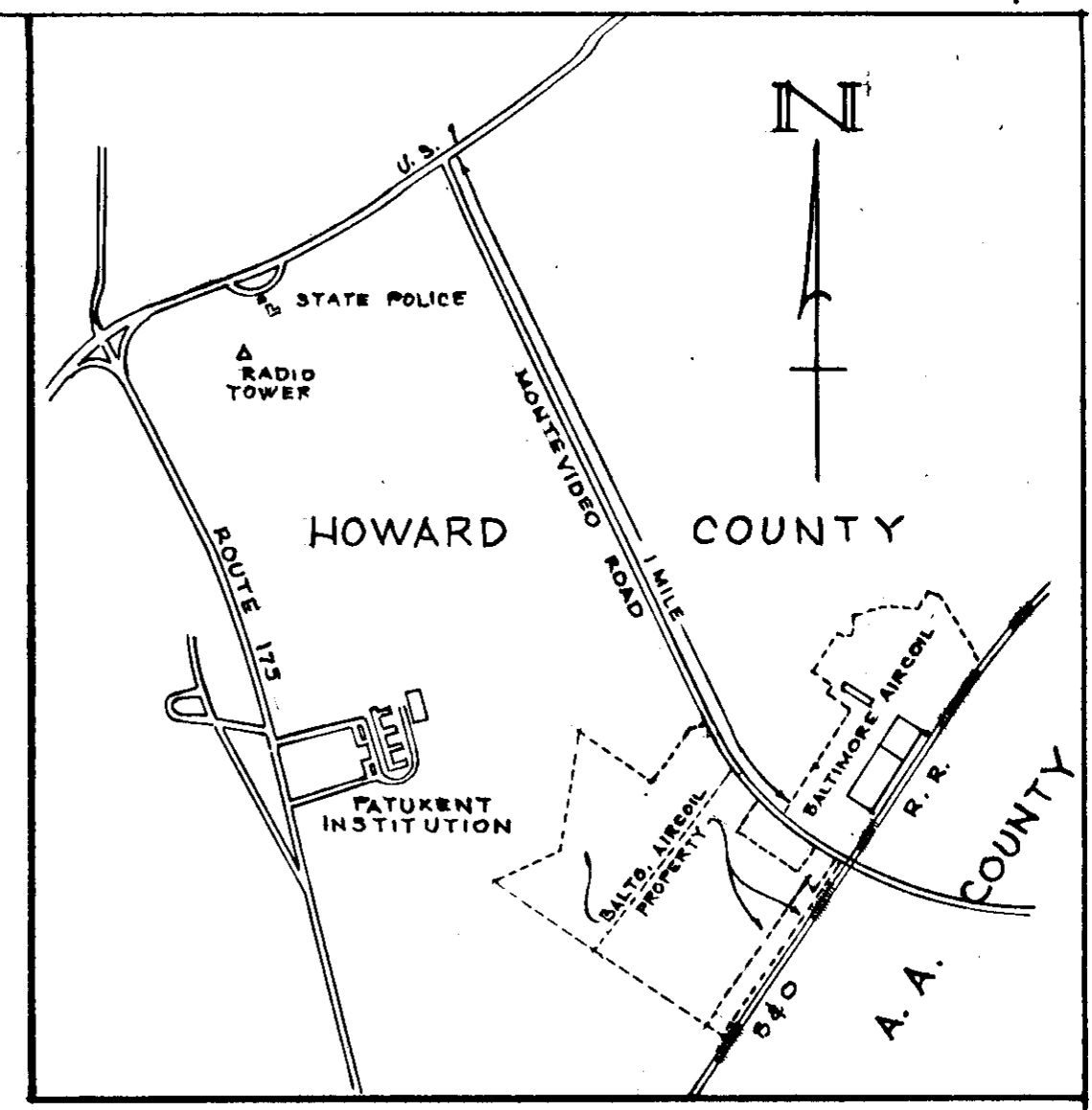
PARTIAL PLOT PLAN
 SCALE: 1" = 100'



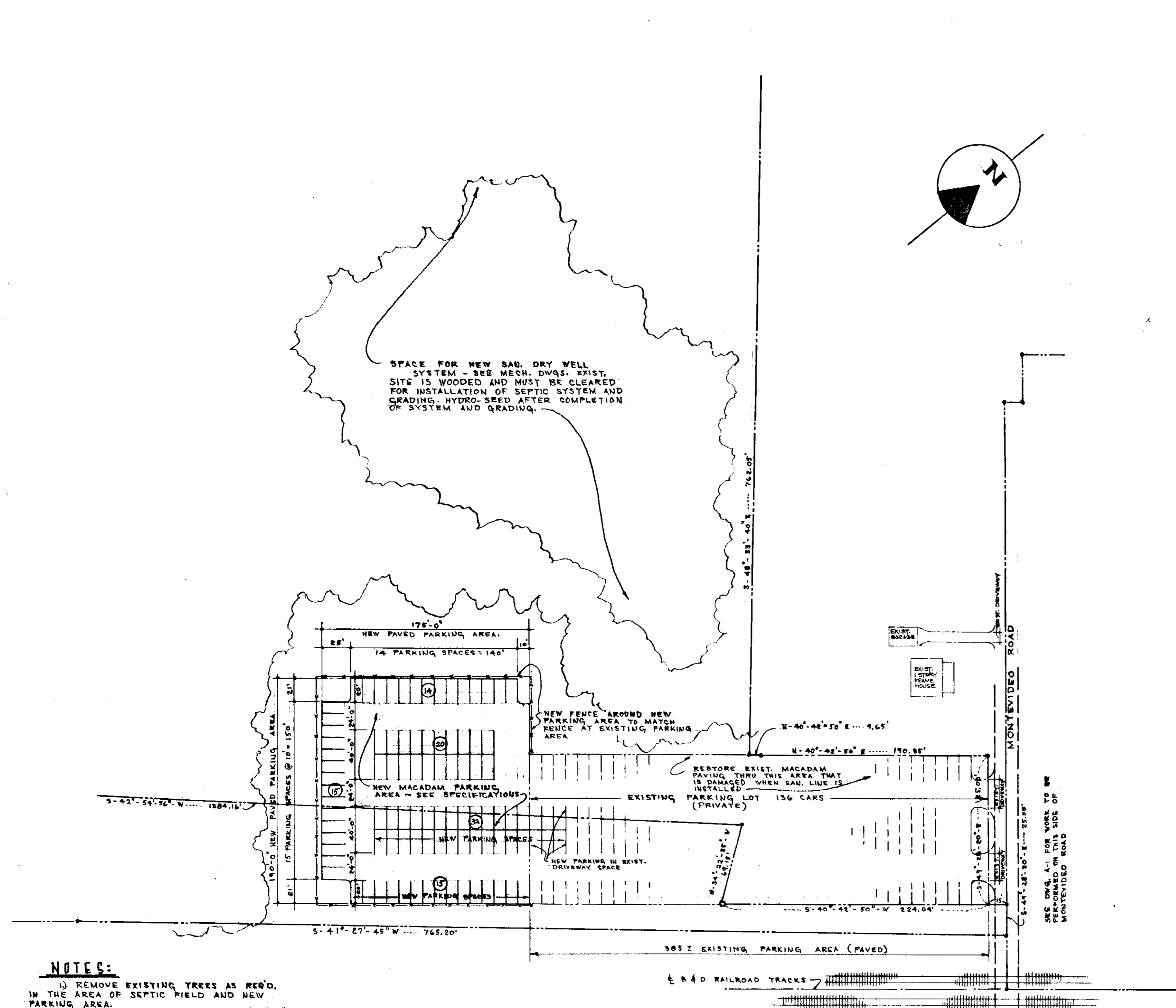
ADDITION TO OFFICE
 AND TESTING FACILITIES
 FOR
 BALTIMORE AIRCOIL CO. INC.
 1ST ELECTION DISTRICT TAX MAP 43
 HOWARD COUNTY MARYLAND
 REVISION OF SDP 74-116

BONNETT and BRANIT
 ARCHITECTS and ENGINEERS
 518 PARK AVENUE
 BALTIMORE MARYLAND
 DATE: JUNE 12, 1974
 REVISIONS: 03-29-74
 SCALE: AS INDICATED
 JOB NO: 682
 SHEET NO: A-1
 OF 4

SDP-1477 75-45

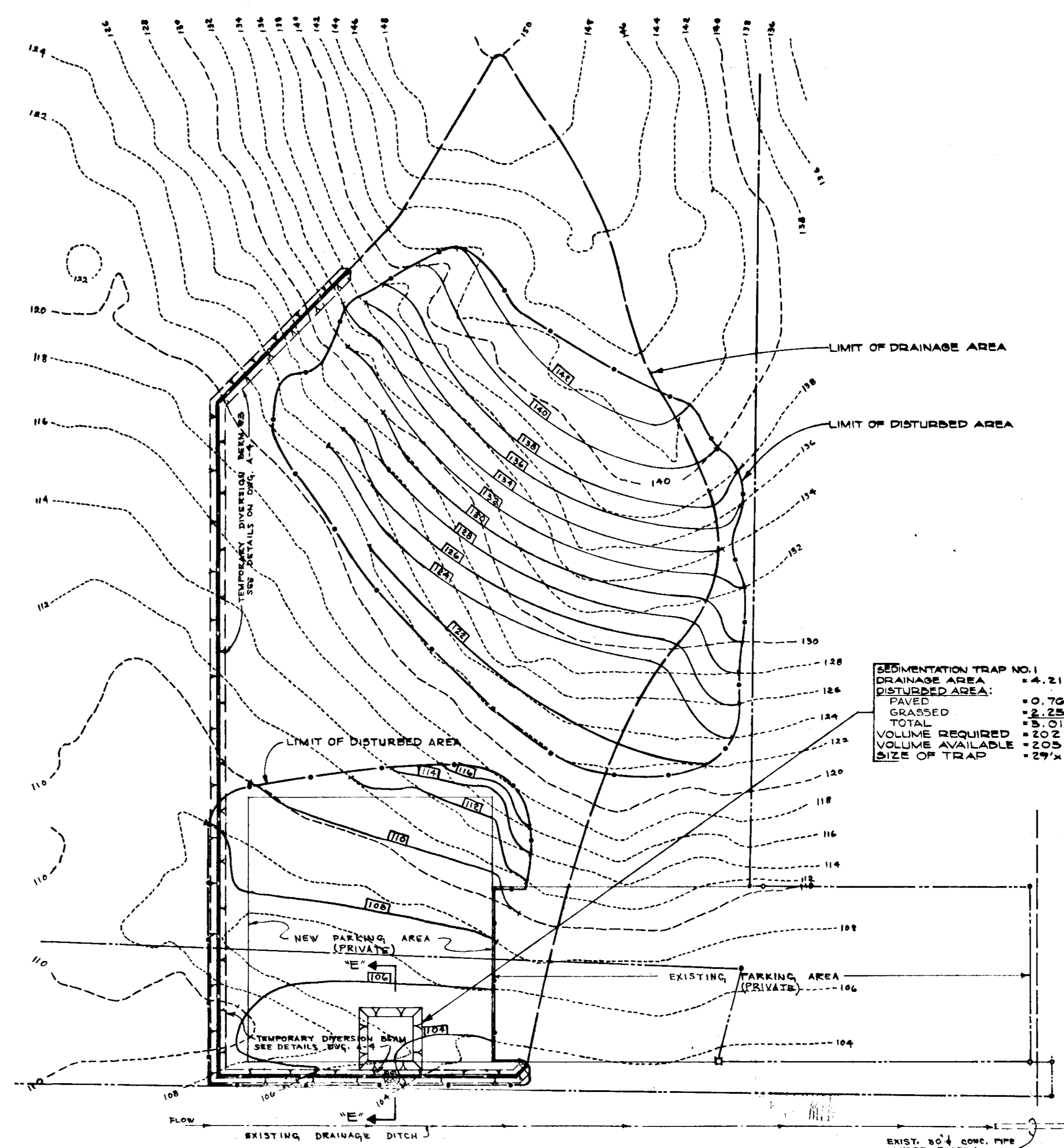


VICINITY MAP
SCALE: 0 500 1000 1500



- NOTES:**
- 1) REMOVE EXISTING TREES AS REQ'D. IN THE AREA OF SEPTIC FIELD AND NEW PARKING AREA.
 - 2) HYDRO-SEED ALL EXPOSED EARTH AREAS WHEN PAVING AND UNDERGROUND UTILITY WORK IS COMPLETE.
 - 3) SEE DWG. A-1 FOR PLAT OF ENTIRE PROPERTY.

ADDITION TO EXISTING PARKING LOT
SOUTHWEST SIDE OF MONTEVIDEO ROAD
SCALE: 0 10 20 40 60 80 100

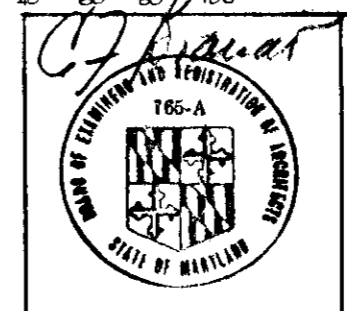


PARTIAL GRADING PLAN
SOUTHWEST SIDE OF MONTEVIDEO ROAD
SCALE: 0 10 20 40 60 80 100

APPROVED
DIVISION OF LAND DEVELOPMENT
AND TRANSPORTATION PLANNING
HOWARD COUNTY, MARYLAND
DATE: 12/12/74

APPROVED FOR PUBLIC WATER AND PRIVATE SEWERAGE SYSTEMS, HOWARD COUNTY HEALTH DEPARTMENT COUNTY HEALTH OFFICER <i>[Signature]</i>	DATE 3/1/75
APPROVED HOWARD COUNTY OFFICE OF PLANNING AND ENGINEERING PLANNING DIRECTOR <i>[Signature]</i>	DATE 3-17-75
APPROVED FOR PUBLIC WATER, PRIVATE SEWERAGE AND STORM DRAINAGE SYSTEMS AND BONDS HOWARD COUNTY DEPARTMENT OF PUBLIC WORKS DEPT. CHIEF <i>[Signature]</i>	DATE 3/18/75
APPROVED FOR PUBLIC WATER, PRIVATE SEWERAGE AND STORM DRAINAGE SYSTEMS AND BONDS CHIEF BUREAU OF HIGHWAYS <i>[Signature]</i>	DATE 3/11/75

NOTE: SEE DWG. NO. A-4 FOR SEDIMENTATION CONTROL DETAILS, NOTES, CONSTRUCTION SEQUENCE ETC.

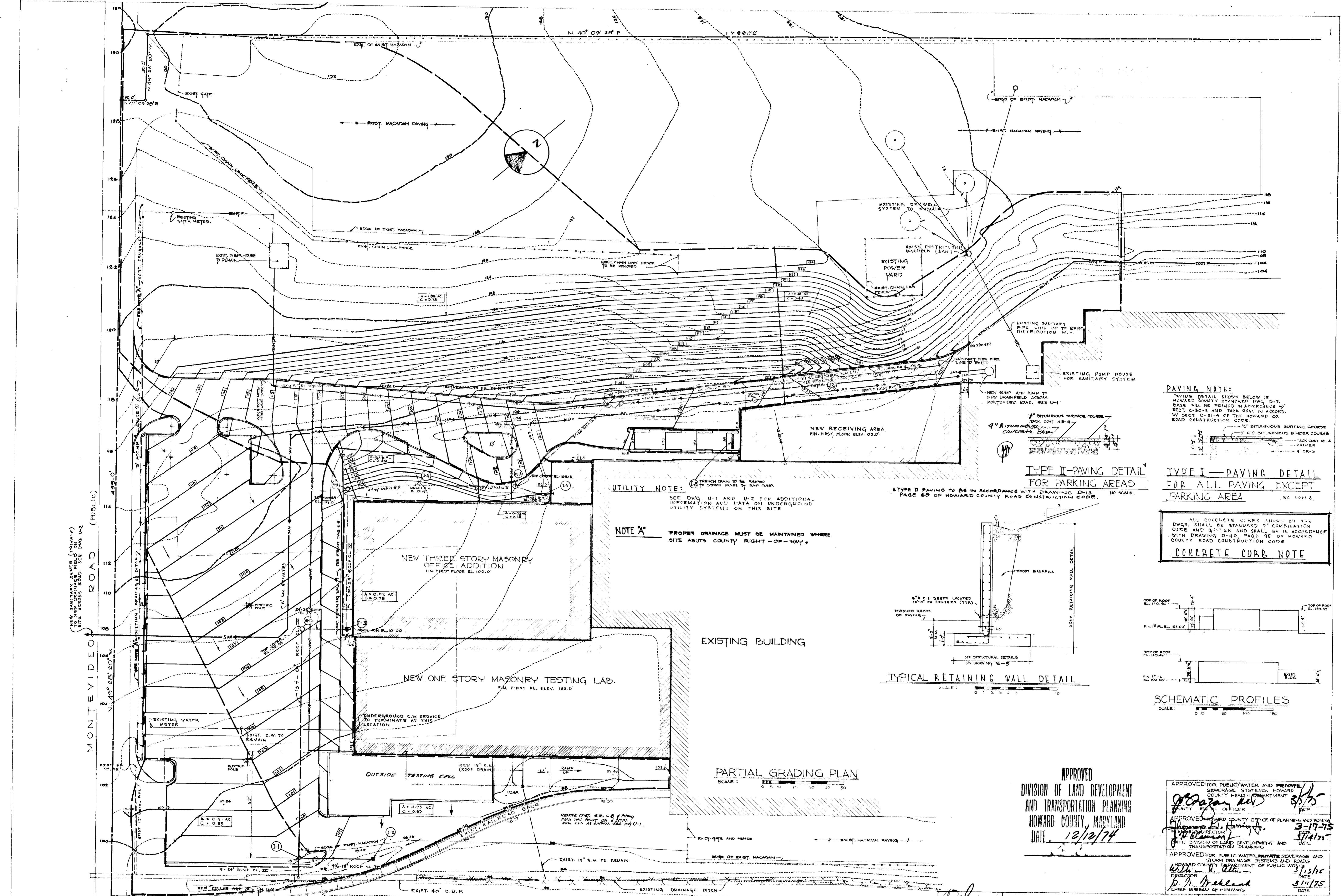


ADDITION TO OFFICE AND TESTING FACILITIES
FOR
BALTIMORE AIRCOIL CO INC.
MONTEVIDEO ROAD
1ST ELECTION DISTRICT TAX MAP 43
HOWARD COUNTY MARYLAND

BONNETT and BRANDT ARCHITECTS and ENGINEERS 515 PARK AVENUE BALTIMORE MARYLAND	
DATE: JUNE 11, 1974	SCALE: AS INDICATED
REVIEWED: JOR RB.	DRAWING NO. A-2
682	OF 4

REVISION OF S.D.P. 74-116

SDP-74-116 75-46



UTILITY NOTE:
SEE DWG. U-1 AND U-2 FOR ADDITIONAL INFORMATION AND DATA ON UNDERGROUND UTILITY SYSTEMS ON THIS SITE.

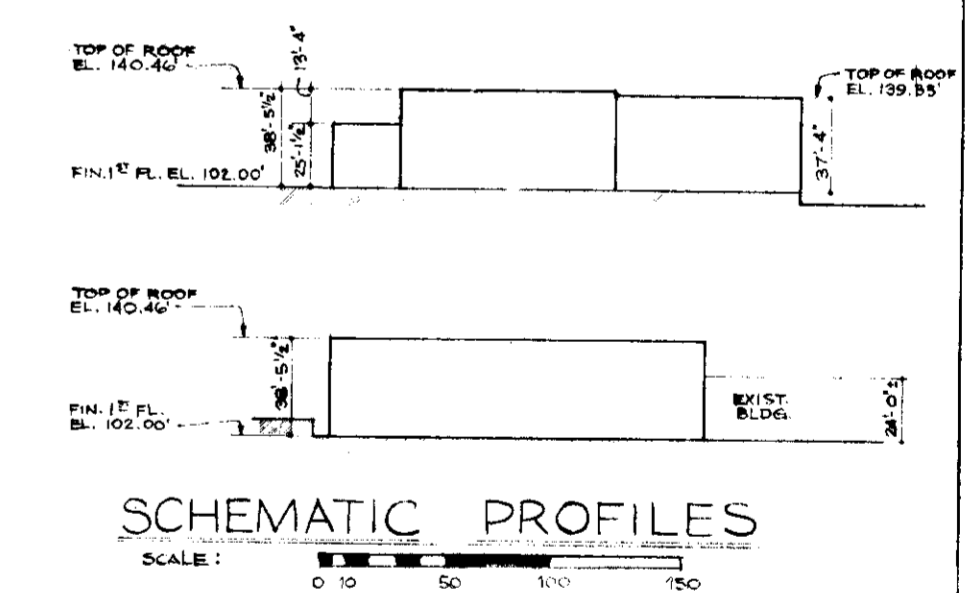
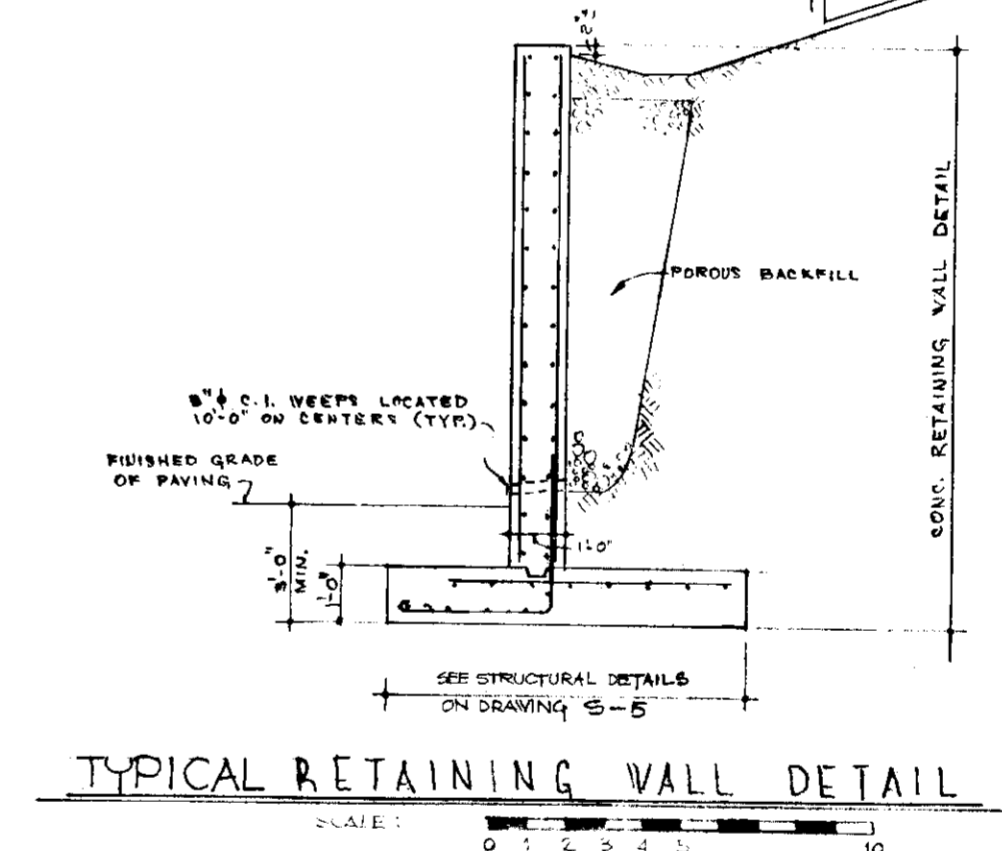
NOTE *A* PROPER DRAINAGE MUST BE MAINTAINED WHERE SITE ADJUTS COUNTY RIGHT-OF-WAY.

TYPE II PAVING DETAIL FOR PARKING AREAS
NO SCALE.
PAGE 6B OF HOWARD COUNTY ROAD CONSTRUCTION CODE.

PAVING NOTE:
PAVING DETAIL SHOWN BELOW IS HOWARD COUNTY STANDARD DWG. D-7. BASE WILL BE FIRMED IN ACCORDANCE WITH SECT. C-30-3 AND TACK COAT IN ACCORD. WITH SECT. C-31-4 OF THE HOWARD CO. ROAD CONSTRUCTION CODE.

TYPE I - PAVING DETAIL FOR ALL PAVING EXCEPT PARKING AREA
NO SCALE.

CONCRETE CURB NOTE
ALL CONCRETE CURBS SHOWN ON THE DWGS. SHALL BE STANDARD 7" COMBINATION CURBS AND GUTTERS AND SHALL BE IN ACCORDANCE WITH DRAWING D-40, PAGE 95 OF HOWARD COUNTY ROAD CONSTRUCTION CODE.



EXISTING BUILDING

NEW THREE STORY MASONRY OFFICE ADDITION
FIN. FIRST FLOOR ELEV. 102.10'

NEW ONE STORY MASONRY TESTING LAB.
FIN. FIRST FL. ELEV. 102.10'

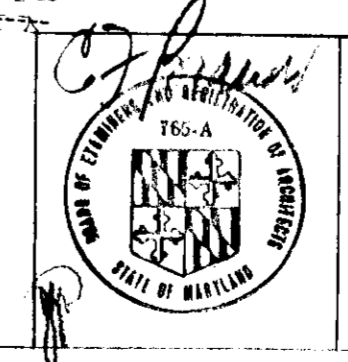
PARTIAL GRADING PLAN
SCALE: 0 5 10 20 30 40 50

APPROVED
DIVISION OF LAND DEVELOPMENT AND TRANSPORTATION PLANNING
HOWARD COUNTY, MARYLAND
DATE: 12/12/74

APPROVED FOR PUBLIC WATER AND PRIVATE SEWERAGE SYSTEMS, HOWARD COUNTY HEALTH DEPARTMENT
DATE: 8/5/75

APPROVED HOWARD COUNTY OFFICE OF PLANNING AND ZONING
DATE: 3-17-75

APPROVED FOR PUBLIC WATER, PRIVATE SEWERAGE AND STORM DRAINAGE SYSTEMS AND ROADS
HOWARD COUNTY DEPARTMENT OF PUBLIC WORKS
DATE: 3/11/75



BONNETT and BRANDT
ARCHITECTS AND ENGINEERS
515 PARK AVENUE
BALTIMORE, MARYLAND

DATE: JUNE 11, 1974
SCALE: AS NOTED
JOB NO.: 682
DRAWING NO.: A-3
OF 4

REVISION OF SD.P. 74-116 SDP-74-116 75-45

APPROVED
 DIVISION OF LAND DEVELOPMENT
 AND TRANSPORTATION PLANNING
 HOWARD COUNTY, MARYLAND
 DATE 12/12/74

SEDIMENTATION TRAP NO. 3
 DRAINAGE AREA = 1.45 AC.
 DISTURBED AREA:
 PAVED = 0.45 AC.
 ROOFED = 0.01 AC.
 GRASSED = 0.42 AC.
 TOTAL = 0.88 AC.
 VOLUME REQUIRED = 59 C.Y.
 VOLUME AVAILABLE = 40 C.Y.
 SIZE OF TRAP = 7' x 11' x 4'

SEDIMENTATION TRAP NO. 4
 DRAINAGE AREA = 0.69 AC.
 DISTURBED AREA:
 PAVED = 0.16 AC.
 ROOFED = 0.03 AC.
 GRASSED = 0.42 AC.
 TOTAL = 0.61 AC.
 VOLUME REQUIRED = 42 C.Y.
 VOLUME AVAILABLE = 45 C.Y.
 SIZE OF TRAP = 4' x 11' x 4'

GENERAL NOTES

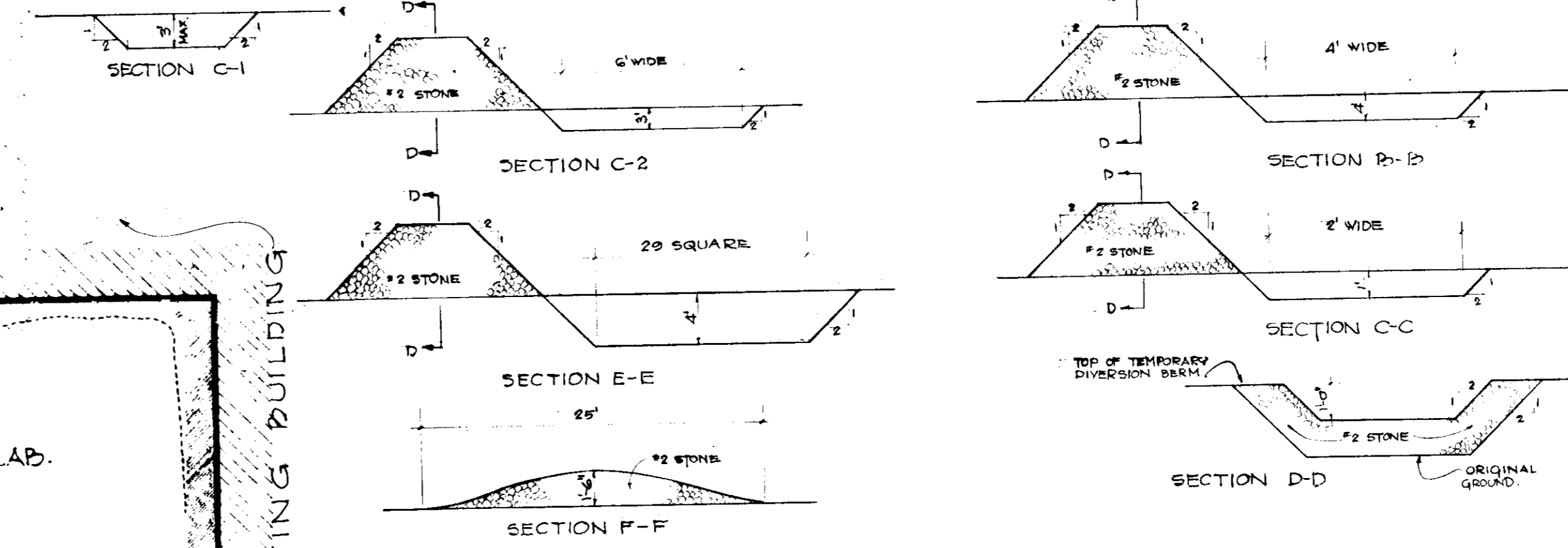
- 1 THE CONTRACTOR SHALL INSTALL THE BLEEDER BERMS AT THE LOCATIONS SHOWN ON THIS PLAN AND SHALL PROVIDE MAINTENANCE OF SAME UNTIL GRADED AREAS HAVE BEEN ESTABLISHED.
- 2 TEMPORARY GRADING SHALL BE PERFORMED AS REQUIRED TO AVOID FLOODING OF WATER.
- 3 TEMPORARY DIVERSION BERMS SHALL BE IN PLACE PRIOR TO THE END OF EACH DAY'S WORK.
- 4 PERMANENT SEDIMENT CONTROL SHALL BE A MIXTURE OF 70% KENTUCKY #1 TALL FESCUE, 20% KENTUCKY BLUEGRASS AND 10% ITALY BRYE GRASS AND SHALL BE APPLIED AT A RATE OF 50 LBS. PER AC. PER YEAR. FIRST YEAR OF AN ANNUAL 100 LBS. SHALL BE APPLIED AT RATE OF 80 LBS. PER 1000 SQ. FT. UNTIL FULLY MULCH AREA WITH UNLIMBED SMALL GRASS SEED (LIMBERLOK MIX) AT A RATE OF 10 LBS. PER AC. PER YEAR. AND WITH LIQUID ASHTAL RAPID CURING (GALSO 20 283 OR 20 300) AT A RATE OF 0.1 GAL. PER LINE AT RATE OF 0.5 LBS. PER 1000 SQ. FT.
- 5 ALL WORK SHALL BE DONE IN ACCORDANCE WITH PLANS AND SPECIFICATIONS APPROVED BY THE HOWARD SOIL CONSERVATION DISTRICT AND THE OFFICE OF PLANNING AND TRANSPORTATION OF HOWARD COUNTY.
- 6 THE DIVISION OF CONSTRUCTION INTO PHASE I AND PHASE II IS TO BE USED TO MAINTAIN CONTINUOUS ACCESS TO THE FACILITY DURING CONSTRUCTION.
- 7 CUT & FILL ARE IN APPROXIMATE BALANCE.
- 8 MATERIAL USE FOR FILL WILL NOT CONTAIN DECOMPOSABLE MATERIAL.
- 9 CAP TEMPORARILY ALL STORM DRAIN INLETS.
- 10 SEDIMENTATION TRAPS WILL BE CLEARED & GRADED TO THEIR ORIGINAL DIMENSIONS WHENEVER THEY ARE FILLED WITH SEDIMENT, OR AS DIRECTED BY THE HOWARD SOIL CONSERVATION DISTRICT.
- 11 THE TOTAL DISTURBED AREA FOR THE SITE IS 6.0 AC.
- 12 ALL STRUCTURAL SEDIMENT CONTROL MEASURES ARE TO REMAIN IN PLACE UNTIL PERMITS FOR THEIR REMOVAL HAVE BEEN OBTAINED FROM THE HOWARD SOIL CONSERVATION DISTRICT AND THE OFFICE OF PLANNING AND TRANSPORTATION OF HOWARD COUNTY.
- 13 NOTIFY THE HOWARD SOIL CONSERVATION DISTRICT AT LEAST 24 HOURS BEFORE STARTING ANY WORK. PHONE 465-8150 OR 261-1000 EXT. 320.

CONSTRUCTION SEQUENCE

- PHASE I
- 1 CONSTRUCT TEMPORARY DIVERSION BERM #1, SEDIMENTATION TRAP NO. 3, 4 AND STONE CONSTRUCTION ENTRANCE #1.
 - 2 STABILIZE BERM IN ACCORDANCE WITH GENERAL NOTE #3.
 - 3 GRADE & STABILIZE (IN ACCORDANCE WITH GENERAL NOTE #2) SLOPE NORTH OF DIVERSION BERM #1.
- PHASE II
- 1 CONSTRUCT TEMPORARY DIVERSION BERM #2, SEDIMENTATION TRAP NO. 2 AND STONE CONSTRUCTION ENTRANCE #2.
 - 2 STABILIZE BERM IN ACCORDANCE WITH GENERAL NOTE #3.
 - 3 CONSTRUCT PROPOSED STORM DRAIN.
 - 4 GRADE SITE.
 - 5 CONSTRUCT BUILDINGS.
 - 6 INSTALL CURB & GUTTER AND PAVING.
 - 7 STABILIZE (IN ACCORDANCE WITH GENERAL NOTE #2) ALL GRADED AREAS NOT DONE IN PHASE I.
 - 8 REMOVE SEDIMENT TRAPS AND BERM OR STABILIZE (IN ACCORDANCE WITH GENERAL NOTE #4) AREAS AS REQUIRED.

UTILITY NOTE:

SEE DWG. U-1 AND U-2 FOR ADDITIONAL INFORMATION AND DATA ON UNDERGROUND UTILITY SYSTEMS ON THIS SITE.



BERM & SEDIMENTATION TRAP DETAILS
 NO SCALE

HOWARD SOIL CONSERVATION DISTRICT
 THIS DEVELOPMENT PLAN IS APPROVED FOR SOIL EROSION AND SEDIMENT CONTROL BY THE HOWARD SOIL CONSERVATION DISTRICT.
 APPROVED: *[Signature]* DATE 2-25-75

"I CERTIFY THAT ALL DEVELOPMENT AND/OR CONSTRUCTION WILL BE DONE ACCORDING TO THIS PLAN OF DEVELOPMENT AND PLAN FOR EROSION AND SEDIMENT CONTROL. I ALSO AUTHORIZE PERIODIC ON-SITE INSPECTION BY THE HOWARD SOIL CONSERVATION DISTRICT OR THEIR AUTHORIZED AGENTS, AS ARE DEEMED NECESSARY. DEVIATION FROM THIS PLAN WILL NOT BE MADE UNLESS AUTHORIZED BY THE HOWARD SOIL CONSERVATION DISTRICT."
 APPROVED: *[Signature]* DATE 2/18/75

"I CERTIFY THAT THIS PLAN FOR EROSION AND SEDIMENT CONTROL REPRESENTS A PRACTICAL AND VOUCHABLE PLAN BASED ON MY PERSONAL KNOWLEDGE OF THE SITE CONDITIONS AND THAT IT WAS PREPARED IN ACCORDANCE WITH THE REQUIREMENTS OF THE HOWARD SOIL CONSERVATION DISTRICT."
 APPROVED: *[Signature]* DATE 7-17-74

REVIEWED FOR: *Howard* E.O.D.
 APPROVED: *[Signature]* DATE 2-25-75

APPROVED FOR PUBLIC WATER AND PRIVATE SEWERAGE SYSTEMS, HOWARD COUNTY HEALTH DEPARTMENT
 APPROVED: *[Signature]* DATE 3/25/75

APPROVED: HOWARD COUNTY OFFICE OF PLANNING AND TRANSPORTATION
 APPROVED: *[Signature]* DATE 3/11/75

APPROVED: DIVISION OF LAND DEVELOPMENT AND TRANSPORTATION PLANNING
 APPROVED: *[Signature]* DATE 3/14/75



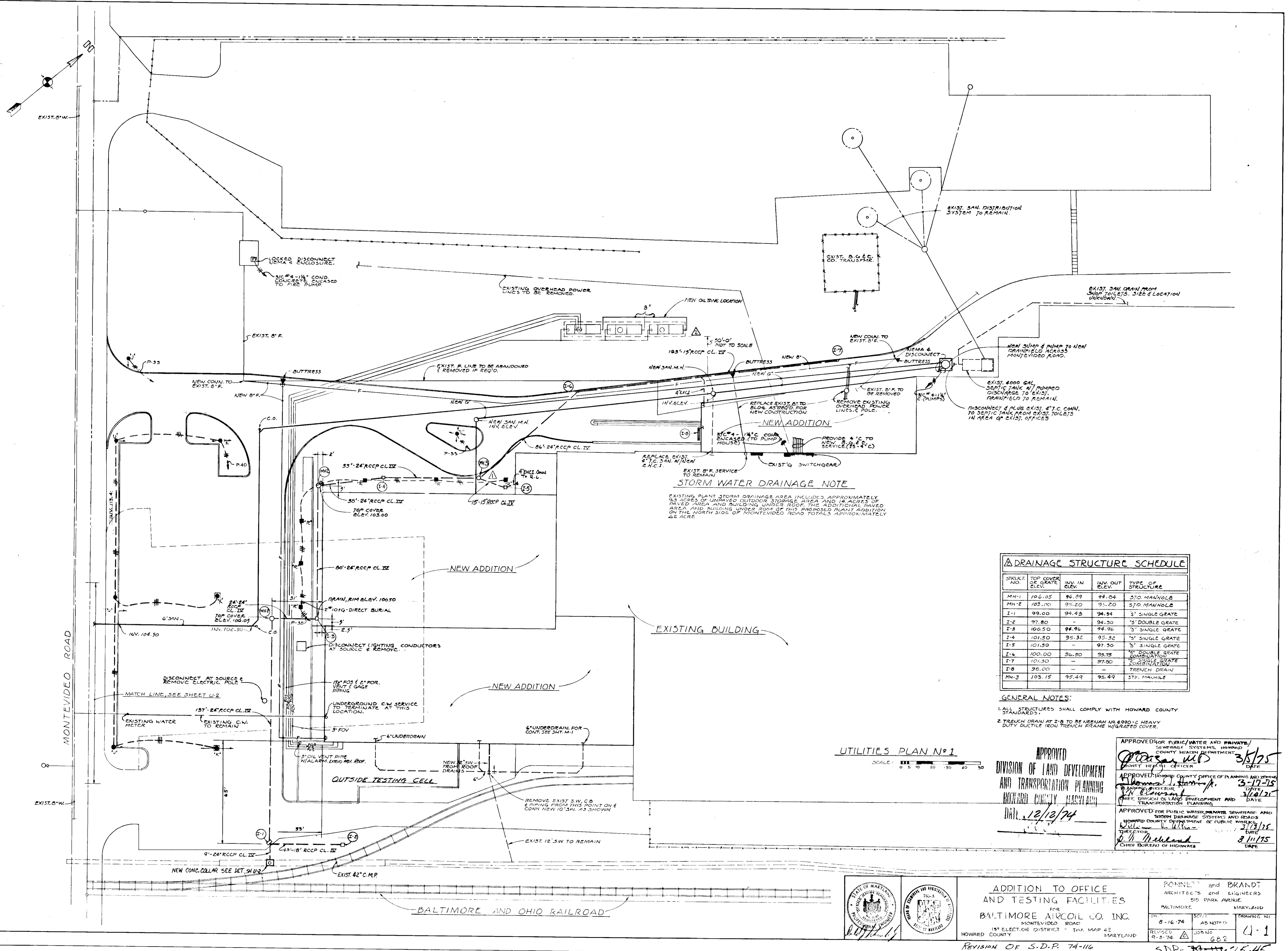
ADDITION TO OFFICE
 AND TESTING FACILITIES
 FOR
 BALTIMORE AIRCOIL CO. INC.
 MONTEVIDEO ROAD
 HOWARD COUNTY, MARYLAND

BOYNETT and BRANDT
 ARCHITECTS AND ENGINEERS
 510 PARK AVENUE
 BALTIMORE, MARYLAND
 DATE: APR 11, 1974
 SCALE: AS NOTED
 SHEET NO. A-4

REVISION OF S.D.P. 74-116

SDP-74-116 75-45

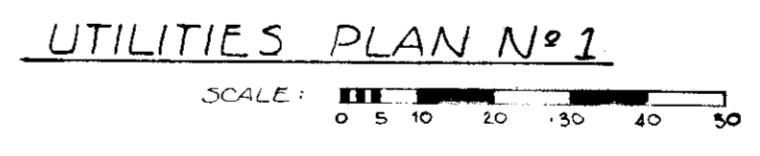
2/8/75 ELIMINATED SEDIMENTATION TRAP NO. 2, ADDED STORM DRAIN, NEW DIVERSION BERM, AND STONE CONSTRUCTION ENTRANCE AND IMPROVED BERM.



STORM WATER DRAINAGE NOTE
 EXISTING PLANT STORM DRAINAGE AREA INCLUDED APPROXIMATELY 4.9 ACRES OF UNPAVED OUTDOOR STORAGE AREA AND 1.4 ACRES OF PAVED AREA AND BUILDING UNDER ROOF. THE ADDITIONAL PAVED AREA AND BUILDING UNDER ROOF OF THIS PROPOSED PLANT ADDITION ON THE NORTH SIDE OF MONTEVIDEO ROAD TOTALS APPROXIMATELY 6.2 ACRES.

DRAINAGE STRUCTURE SCHEDULE					
STRUCT. NO.	TOP COVER OF GRATE ELEV.	INV. IN ELEV.	INV. OUT ELEV.	TYPE OF STRUCTURE	
MH-1	106.05	94.89	94.84	570 MANHOLE	
MH-2	103.00	95.20	95.20	570 MANHOLE	
I-1	99.00	94.45	94.34	3' SINGLE GRATE	
I-2	97.80	-	94.30	5' DOUBLE GRATE	
I-3	100.50	94.96	94.96	5' SINGLE GRATE	
I-4	101.50	95.32	95.32	5' SINGLE GRATE	
I-5	101.50	-	97.30	5' SINGLE GRATE	
I-6	100.00	96.50	95.75	5' DOUBLE GRATE COMBINATION	
I-7	101.30	-	97.80	5' SINGLE GRATE COMBINATION	
I-8	98.00	-	-	TRENCH DRAIN	
MH-3	103.15	95.49	95.49	570 MANHOLE	

GENERAL NOTES:
 1. ALL STRUCTURES SHALL COMPLY WITH HOWARD COUNTY STANDARDS.
 2. TRENCH DRAIN AT I-8 TO BE NEENAH NO. 690-C HEAVY DUTY DUCTILE IRON TRENCH FRAME W/GRATED COVER.



APPROVED
 DIVISION OF LAND DEVELOPMENT AND TRANSPORTATION PLANNING
 BOARD COUNTY, MARYLAND
 DATE: 12/12/74

APPROVED FOR PUBLIC WATER AND PRIVATE SEWERAGE SYSTEMS, HOWARD COUNTY HEALTH DEPARTMENT
 COUNTY HEALTH OFFICER
 DATE: 3/5/75

APPROVED HOWARD COUNTY OFFICE OF PLANNING AND ZONING
 PLANNING DIRECTOR
 DATE: 3/17/75

APPROVED FOR PUBLIC WATER, PRIVATE SEWERAGE AND STORM DRAINAGE SYSTEMS AND GRADES
 HOWARD COUNTY DEPARTMENT OF PUBLIC WORKS
 DATE: 3/13/75

BALTIMORE AND OHIO RAILROAD

ADDITION TO OFFICE AND TESTING FACILITIES
 FOR
BALTIMORE AIRCOIL CO. INC.
 1ST ELECTION DISTRICT - TAX MAP 42
 HOWARD COUNTY, MARYLAND

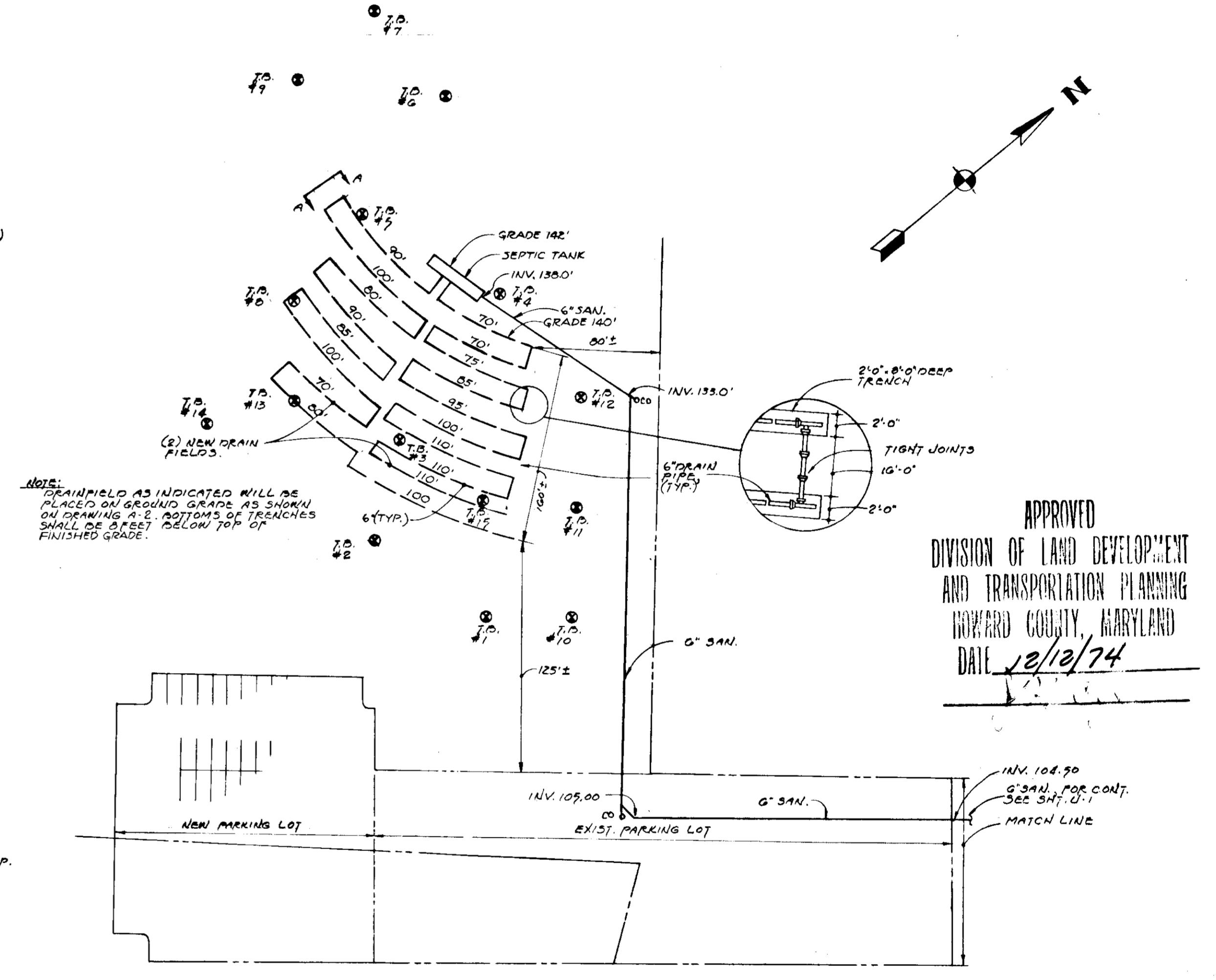
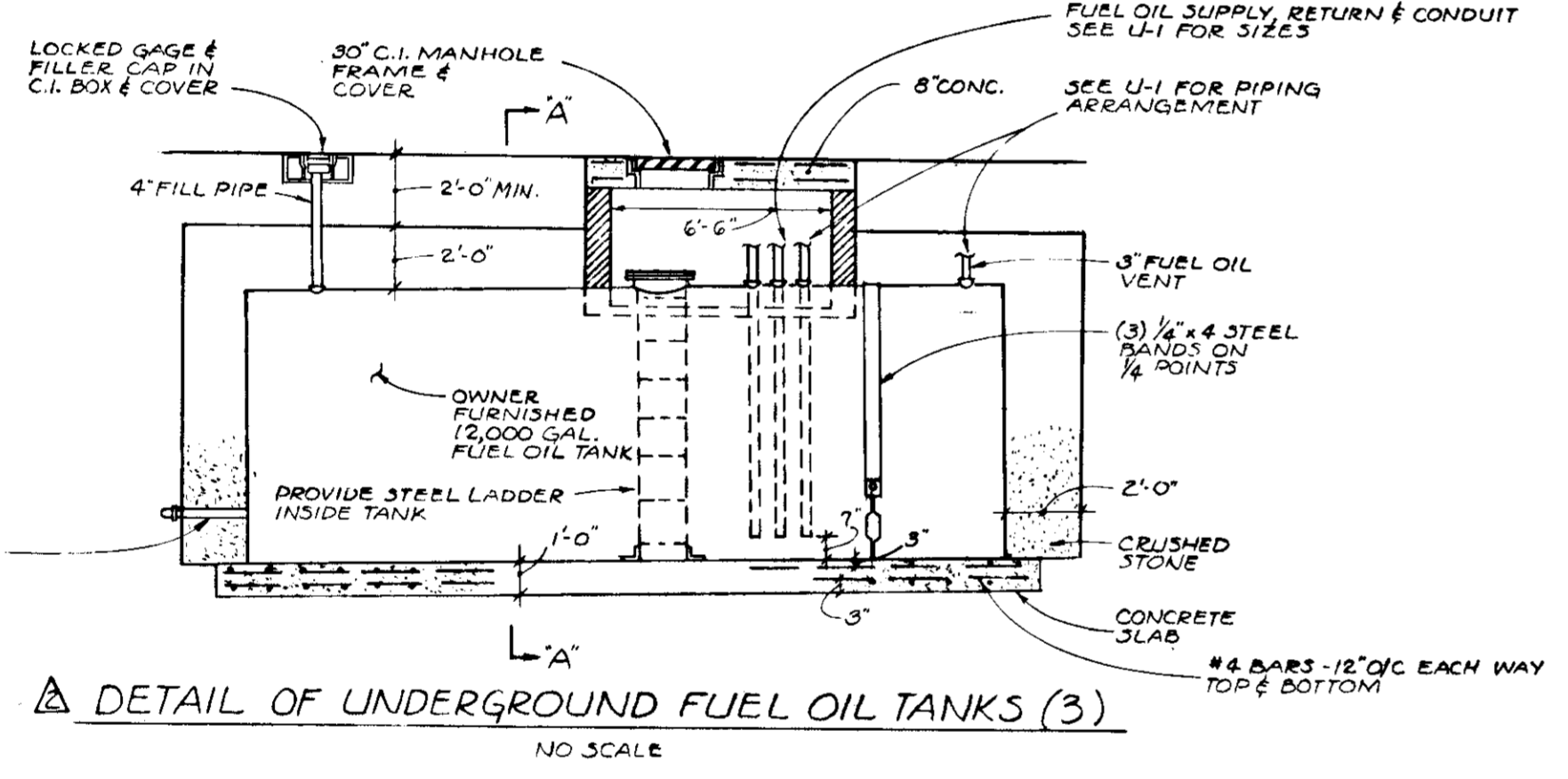
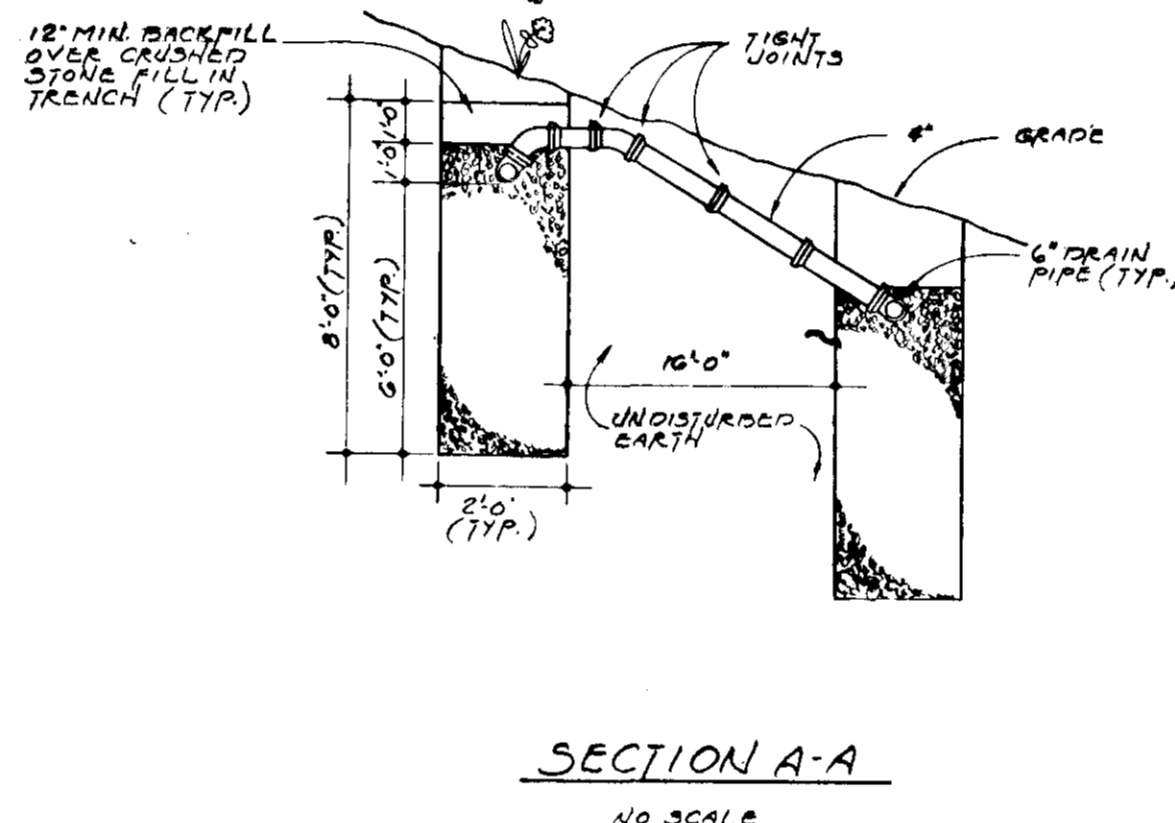
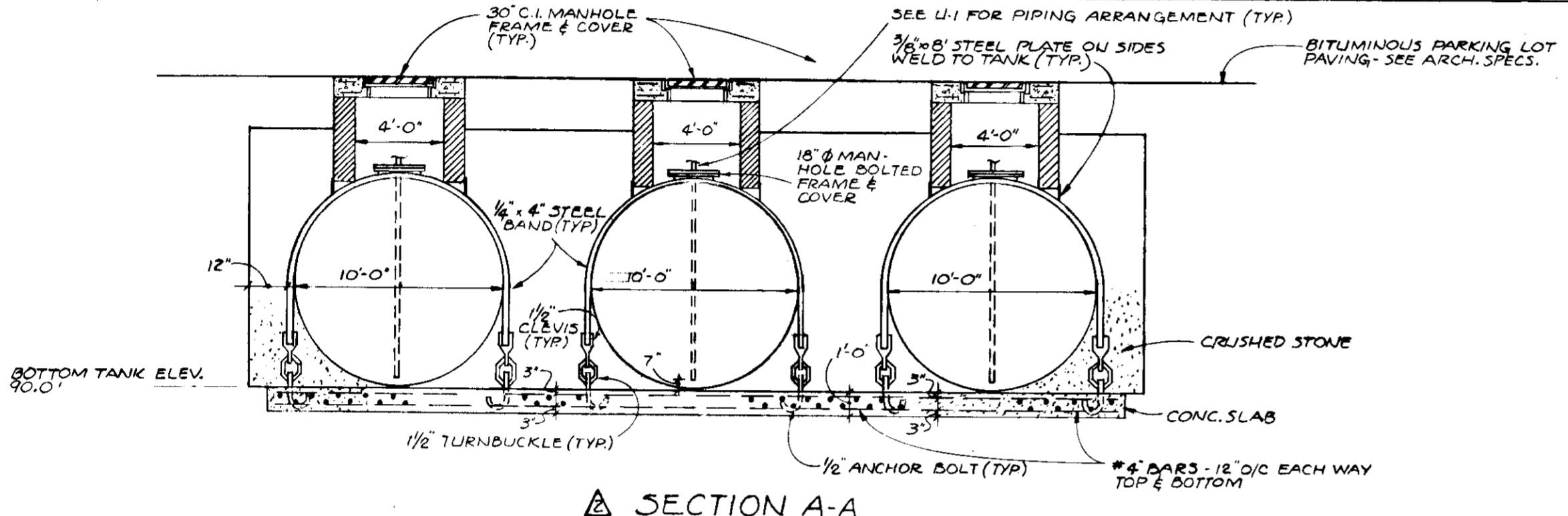
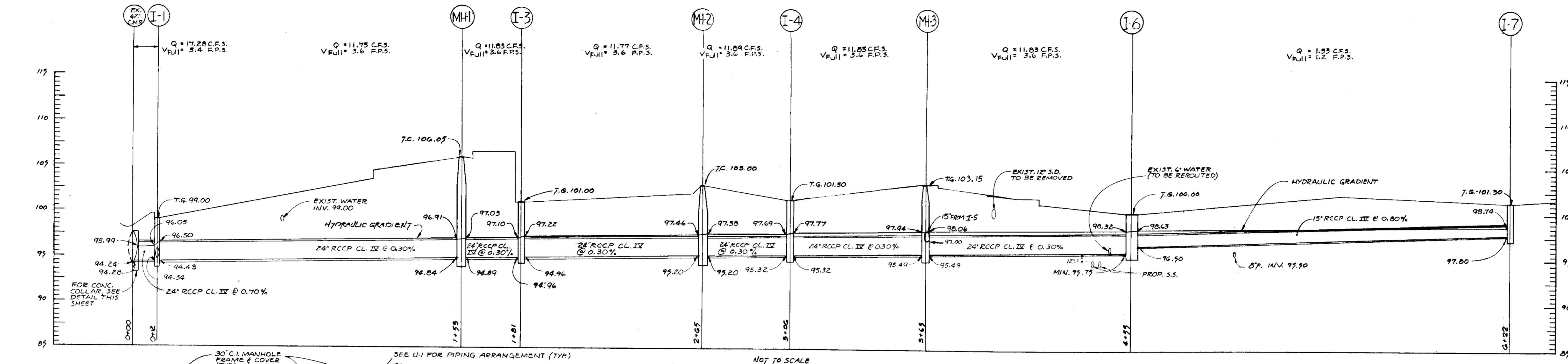
PONNETT and BRANDT
 ARCHITECTS and ENGINEERS
 515 PARK AVENUE
 BALTIMORE, MARYLAND

DATE: 8-16-74
 REVISED: 9-3-74

AS NOTED
 WORKS
 602

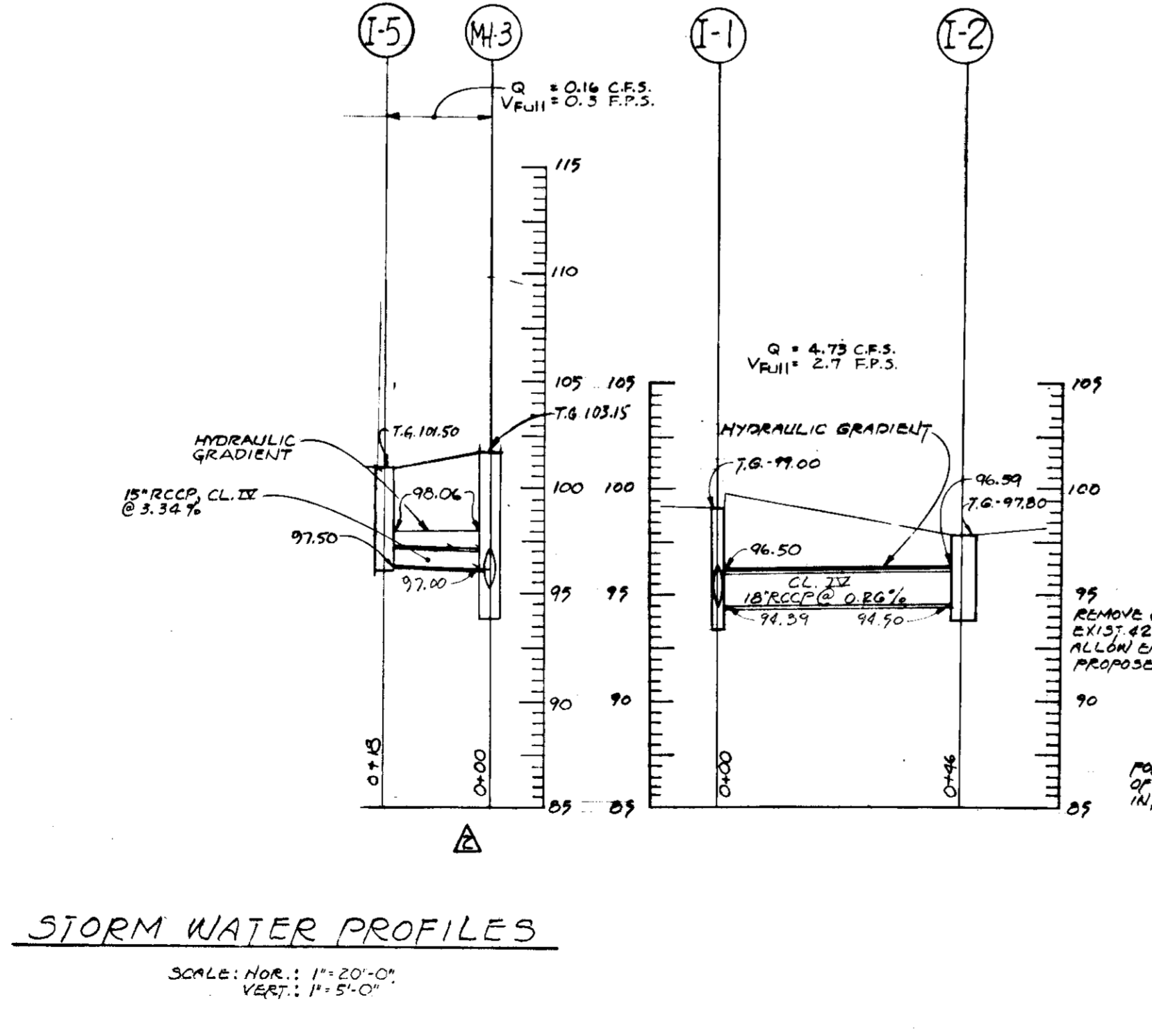
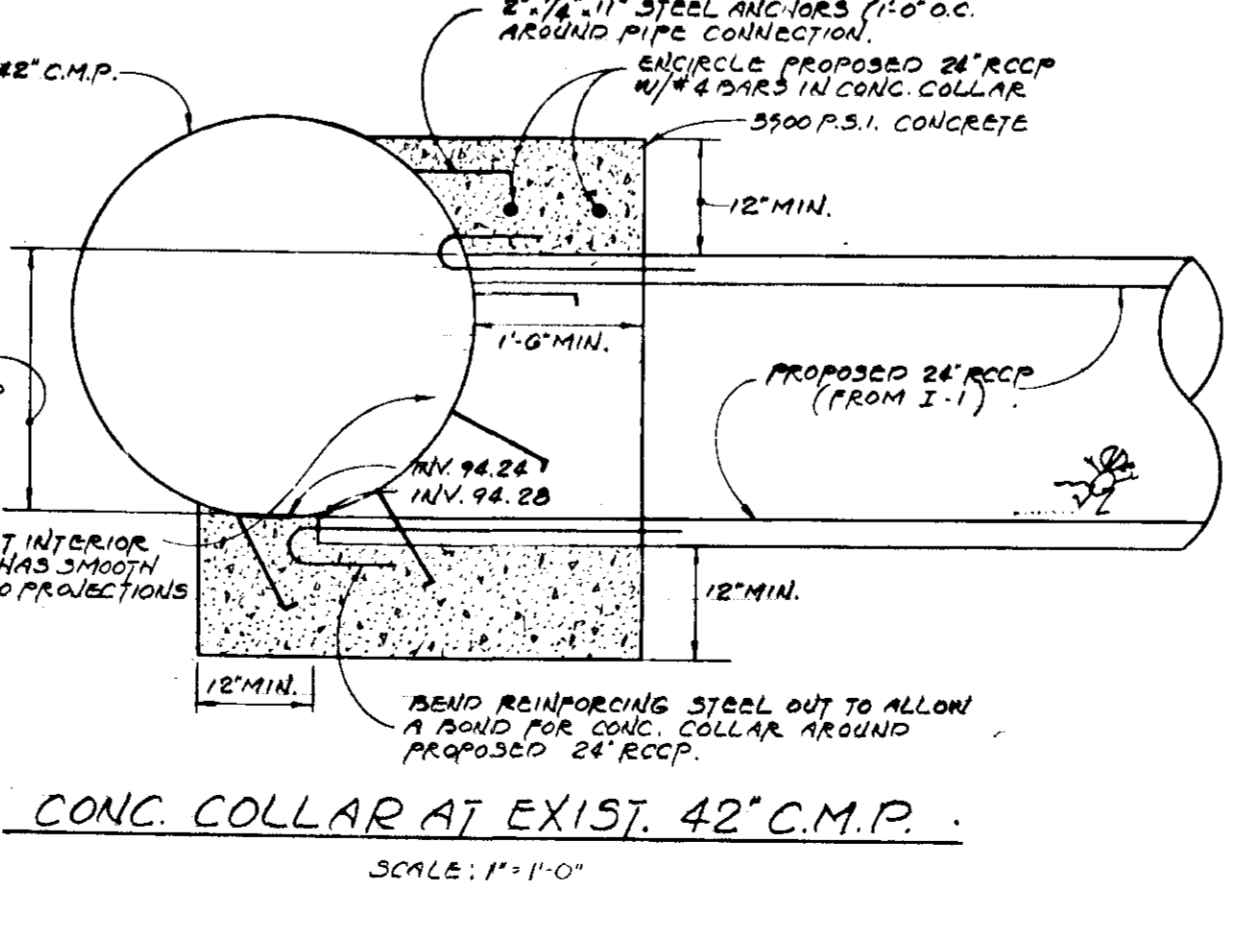
DRAWING NO: 4-1

REVISION OF S.D.P. 74-116
 SDP-74-HW-15.45



APPROVED
DIVISION OF LAND DEVELOPMENT
AND TRANSPORTATION PLANNING
HOWARD COUNTY, MARYLAND
DATE 12/12/74

- NOTES
1. THE SEPTIC TANK, APPROXIMATELY 7000 GALLON CAPACITY, SHALL BE A REINFORCED CONCRETE STRUCTURE APPROXIMATELY 45 FT. LONG BY 8 FT. HIGH. TANK SHALL BE EQUIPPED WITH A DOSING CHAMBER AND 5' ALTERNATING DRAINS EACH DISCHARGING TO ITS INDIVIDUAL DRAIN FIELD. SEE DETAIL SHU-3.
 2. THE TWO (2) DRAIN FIELDS SHALL EACH CONSIST OF APPROXIMATELY 600 SQ. FT. OF TWO (2) DRAINS BY RIGHT AT EACH END. THE TRENCH WILL BE FILLED 6" AT TOP WITH CRUSHED STONE, COVERED WITH SAND, PAPER AND SOIL. THE DISTRIBUTION PIPING WILL BE 4" PVC PLASTIC, REINFORCED.
 3. THE EXISTING PUMPING STATION SHALL REMAIN. PROVIDE A NEW PUMPING STATION CONSISTING OF: A. TWO (2) PACIFIC PUMP CO. SIZE 4 1/2" TYPE NC 1750 RPM SWIRL ELECTORS EACH CAPABLE OF PUMPING 350 GPM AGAINST A TOTAL HEAD OF 104 FT. 50 HP MOTORS B. 3" DIA. DRAINAGE PIPE @ 1/10" AT 1000' AUTOMATIC CONTROL STEEL SUMP. C. DUAL FLOW CONTROLS WITH ALTERNATORS.
 4. PROVIDE CLEAN OUTS EVERY 100 FT. ON ALL SANITARY LINES OUTSIDE THE TANKS.
 5. SANITARY SERVICE PIPES SHALL BE STD. WEIGHT C.I. ON GRAVITY LINES & CLASS 22 C.I. ON FORCE MAIN.



APPROVED FOR PUBLIC WATER AND PRIVATE SEWERAGE SYSTEMS, HOWARD COUNTY HEALTH DEPARTMENT
COUNTY HEALTH DEPARTMENT OFFICER DATE 8/5/75

APPROVED HOWARD COUNTY OFFICE OF PLANNING AND ZONING
PLANNING DIRECTOR DATE 11/17/74

APPROVED DIVISION OF LAND DEVELOPMENT AND TRANSPORTATION PLANNING
DIRECTOR DATE 3/7/75

APPROVED FOR PUBLIC WATER, PRIVATE SEWERAGE AND STORM DRAINAGE SYSTEMS AND ROADS
HOWARD COUNTY DEPARTMENT OF PUBLIC WORKS
DIRECTOR DATE 3/13/75

DIRECTOR DATE 3/11/75
CHIEF BUREAU OF HIGHWAYS DATE

STATE OF MARYLAND
DEPARTMENT OF PUBLIC WORKS
HOWARD COUNTY

ADDITION TO OFFICE AND TESTING FACILITIES
FOR
BALTIMORE AIRCOIL CO. INC.
MONTEVIDEO ROAD
1ST ELECTION DISTRICT - TAX MAP 42
HOWARD COUNTY MARYLAND

BONNETT and BRANDT
ARCHITECTS and ENGINEERS
515 PARK AVENUE
BALTIMORE MARYLAND

DATE 6-16-74 SCALE AS NOTED REVISION NO. 4-2
REVISED 9-2-74 JOB NO. 682

REVISION OF S.D.P. 74-116
SDP: H-116 7.5-45